

# PARKS AND RESORTS



VANCOUVER, B.C.

W 448

A 5.

# VANCOUVER

*British Columbia*

ITS

## PARKS *and* RESORTS



*Board of Park Commissioners  
of the City of Vancouver, B.C.*

COMPILED BY  
W. S. RAWLINGS  
SUPERINTENDENT

Park Board Offices: 601-2-3 Dawson Building, Vancouver, B. C.

LP FC 3847.65 V36

PARKS AND RESORTS, VANCOUVER, B.C.

CONTENTS

	PAGES
Park Commissioners, 1888-1919 .....	3-4
Captain Vancouver's Discovery .....	5
Coming of the C. P. R. ....	5
Development of Vancouver .....	10
Great Fire in Vancouver .....	10
Evolution of Park System .....	10
Park Commissioners, Establishment of .....	10
Park Commissioners, Their General Policy .....	10
Visit of H.R.H. the Prince of Wales .....	15
Hastings Park .....	15
Stanley Park, Acquirement .....	15
Opened by Lord Stanley .....	15
Tabular Summary of Park System .....	20
General Features .....	35-46
English Bay .....	46
Clark Park .....	46
McLean Park .....	46-51
Park Statistics .....	50
Kitsilano Park and Beach .....	51
Projects of the Future—	
Indoor Salt-water Swimming Bath .....	51-68
Civic Golf Links .....	68
Fishing in Beaver Lake .....	68

may 1978

set up

PARKS AND RESORTS, VANCOUVER, B.C.

ILLUSTRATIONS

	PAGE
Board of Park Commissioners .....	2
Park Officials .....	4
Woodland Scene, Stanley Park .....	6
Pavilion, Stanley Park .....	7
Promenade and Alexandra Park, English Bay .....	8
Tatlow Walk, Stanley Park .....	9
Civic Arch and Entrance to Stanley Park .....	11
H.R.H. the Prince of Wales at Stanley Park .....	12
Crowds in Stanley Park at the Prince's Visit .....	13
Capilano Canyon .....	14
Falls of the Spray of Pearls, Indian River Park .....	16
The Falls, Lynn Canyon .....	17
Driveway Through the Giants, Stanley Park .....	18
Woodland Glade, Stanley Park .....	19
Capilano River .....	21
Aerial View of Hastings Park .....	22
Forestry Building, Hastings Park .....	23
Bathing Beach and Pier, English Bay .....	24
Second Beach, Stanley Park .....	25
Clark Park .....	26
Children's Wading Pool, Clark Park .....	27
Swans and Pelicans, Stanley Park .....	28
Scenes on Marine Drive, North Shore .....	29
English Bay Bathing Beach .....	30
Kitsilano Bathing Beach .....	31
Elk Paddock, Stanley Park .....	32
Buffalo, Stanley Park .....	33
The Driveway, Stanley Park .....	34
Forest, Mountain and Stream, Capilano .....	36
Vista from Marine Drive .....	37
Yachting Scene, English Bay .....	38
Shores of Stanley Park .....	39
Greenhouses, Stanley Park .....	40
Giant Cedar, Stanley Park .....	41
Suspension Bridge, Capilano Canyon .....	42
Seymour Canyon .....	43
The Ravine, Stanley Park .....	44
158th Battalion on Parade .....	45
Kitsilano Bathing Beach .....	47-48-49
Steamer and Dugout off Stanley Park .....	52
"Seven Sisters," Stanley Park .....	53
At Vancouver Exhibition, Hastings Park .....	54
The Aquarium, Hastings Park .....	55
McLean Playground .....	56
Bowling Greens, Stanley Park .....	57
Siwash Rock, Stanley Park .....	58
Twin Falls, Stanley Park .....	59
Scene on Marine Drive .....	60
Home of the Swans, Stanley Park .....	61
Typical Walk, Stanley Park .....	62
Sunset Over English Bay .....	63
Picnic Grounds, Stanley Park .....	64
Driveway Scene, Stanley Park .....	65
The Gardens, Stanley Park .....	66
Tatlow Park .....	67

may 1978

set up

# Board of Park Commissioners

Vancouver, B.C.



*A.E. J. Weeks*

1918  
1919



*Geo. Sidor*



*Jonathan Rogers,  
Chairman*



*G.W. Hutchings*



*M. S. Logan*

## Park Commissioners, 1888 to 1919

<b>1888</b>		
A. G. Ferguson R. H. Alexander	R. G. Tatlow H. P. McCraney	S. Brighthouse Chas. A. Coldwell
<b>1889-1890</b>		
S. Brighthouse R. H. Alexander	J. W. Horne R. G. Tatlow	G. S. MacConnell G. G. Mackay
<b>1890-1891</b>		
M. Costello	J. W. Horne	R. G. Tatlow
<b>1892-1893</b>		
G. Fewster	R. G. Tatlow	C. G. Hobson
<b>1894-1895</b>		
A. G. Ferguson	R. G. Tatlow	M. Costello
<b>1896-1897</b>		
R. G. Tatlow	M. Costello	Wm. Garden
<b>1898-1899</b>		
J. M. Browning	M. Costello	R. G. Tatlow
<b>1900-1901</b>		
Geo. Bartley	M. Costello	R. G. Tatlow
<b>1902-1903</b>		
R. G. Tatlow	H. W. Kent	A. E. Lees
<b>1904-1905</b>		
R. G. Tatlow T. Wilson	C. E. Tisdall	A. E. Lees F. T. Underhill
<b>1906-1907</b>		
C. E. Tisdall C. H. Gatewood	A. E. Lees	F. T. Underhill Col. T. H. Tracy
<b>1908-1909</b>		
D. Bell Irving C. E. Tisdall	C. H. Gatewood	A. E. Lees Jonathan Rogers
<b>1910-1911</b>		
A. E. Lees W. R. Owen	G. Eldon	C. Nelson Jonathan Rogers
<b>1912</b>		
Jonathan Rogers A. E. Lees	W. R. Owen	E. S. Knowlton G. Eldon
<b>1913</b>		
W. R. Owen E. S. Knowlton	Jonathan Rogers	A. E. Lees G. M. Endacott
<b>1914</b>		
W. R. Owen G. W. Hutchings	G. M. Endacott	A. E. Lees D. M. Stewart
<b>1915</b>		
W. R. Owen A. E. Lees	Jonathan Rogers	D. M. Stewart G. W. Hutchings

PARKS AND RESORTS, VANCOUVER, B. C.

1916

A. E. Lees  
G. W. Hutchings

W. R. Owen

Jonathan Rogers  
M. S. Logan

1917

A. E. Lees  
M. S. Logan

G. W. Hutchings

Jonathan Rogers  
G. Eldon

1918

G. W. Hutchings  
G. Eldon

M. S. Logan

Jonathan Rogers  
A. C. J. Weeks

COMMISSION, 1919

G. W. HUTCHINGS

JONATHAN ROGERS (Chairman)

M. S. LOGAN

G. ELDON

A. C. J. WEEKS



W. S. Rawlings  
Superintendent

A. S. Woolton, A.M.I.C.E.  
Engineer

# THE PARK SYSTEM

## OF VANCOUVER, B. C.

WHILE emphatically a city of the present and the future, Vancouver, B. C., has interesting connections with the past. It bears the name of the gallant naval commander who discovered its site in 1792. In that year Captain George Vancouver, after adventurous voyages that began in London in 1791, sailed around the well-wooded shores of what is now Stanley Park and into Burrard Inlet. In the light of later events, his two little ships of the British navy—the *Discovery*, 340 tons, and the *Chatham*, 135 tons—may be considered to have thus reached the high-water mark of their history. For it was the discovery of the site of a city which in future days was to be known all over the world. A few Indians, no doubt, regarded these trim sailing vessels with much wonder. But the impenetrable forest that came to the water's edge gave no hint of the busy waterfront of the future; of the massive buildings that were to form its skyline, or of the big ships that were to come here from all quarters of the globe.

But the rich expanses of timber were very tempting, and by-and-by prospectors found them out. Aggressive lumbermen, with their regiments of loggers, appeared on the scene. Captain Vancouver and his sailors faded into the past, but on the shores of the inlet were seen the beginnings of a new settlement. The music of the sawmill pierced the dense avenues of the bush as the gleaming steel circles cut through the fallen arboreal monarchs. But for many years the small settlement at the eastern end of what is now Vancouver was slow and uneventful. The locality was not yet on the world's map. The time came, in 1842, when Victoria was founded, and trading back and forth with Vancouver Island and the new towns of Puget Sound began, though the locality was very little heard of either in Eastern Canada or the United States.

But, if there were long years when the existence of the dwellers and workers on Burrard Inlet seemed to be forgotten, the project of a transcontinental railway that was to link the East to the West was gradually taking shape. Political, financial and physical difficulties were successively overcome, and in 1886 the steel of the Canadian Pacific Railway reached Vancouver





PAGE SIX

*Woodland Scene, Stanley Park*



*The Pavilion, Stanley Park*



*The Promenade and Alexandra Park, English Bay*



*Tatlow Walk, Stanley Park*

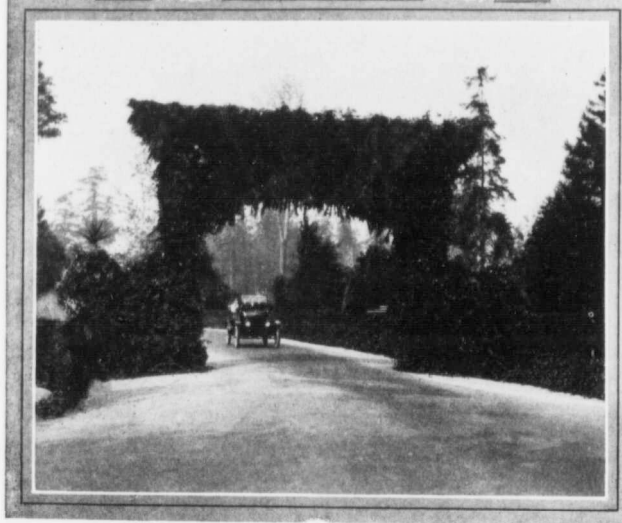
## PARKS AND RESORTS, VANCOUVER, B.C.

and a new era of prosperity began. Great were the hopes of the inhabitants of the settlement originally called Gastown, and then Granville, when railway communication was established. In February of that year it was incorporated as the coming terminal city of the Canadian Pacific Railway, and upon the suggestion of Sir William Van Horne, received its name of Vancouver. Considerable building had been done, and a population of 2,000 had come in, when on June 13th of that eventful year 1886 came a fire which almost swept the infant town out of existence. But this disaster only served to animate the inhabitants with fresh determination, and from that time to the present, despite occasional depression, the progress of Vancouver has been extraordinary.

Side by side with the evolution of the city of Vancouver, the gradual development of its park system has gone steadily on. Beginning with the magnificent area of Stanley Park, a series of breathing places has been established in such a way that no large urban district is without its recreative park privileges. Extension of the park system has been made in four ways: (1) By lease from the Dominion Government; (2) by the gift of a citizen of Vancouver (of which more hereafter); (3) by Provincial Government grant; (4) by purchase.

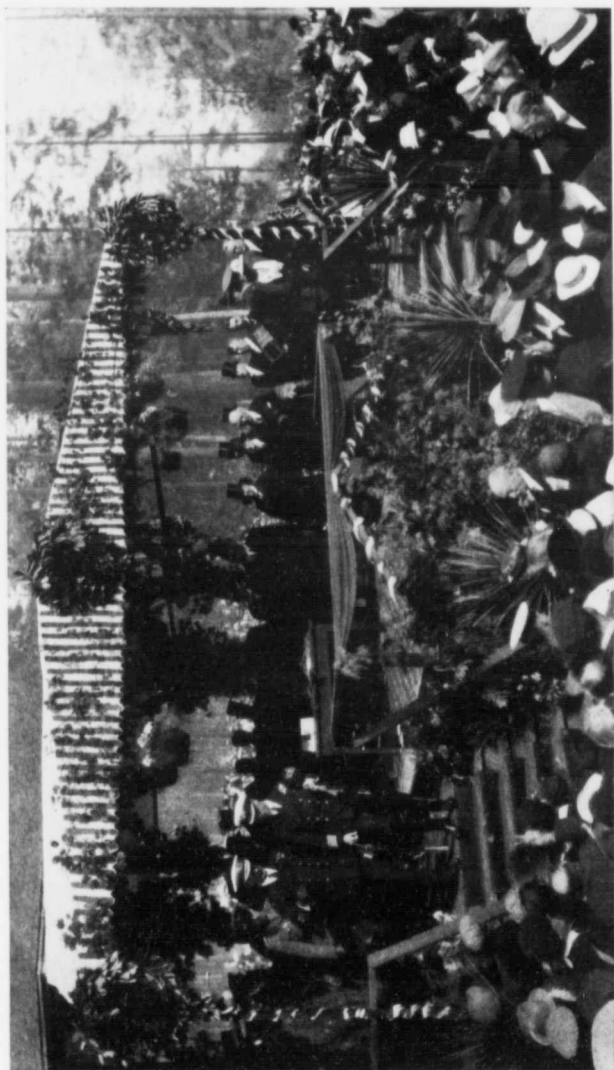
The Board of Park Commissioners was established in 1888. It consists of five members, two of whom retire one year and three the next. Election is by the entire body of citizen voters at the January civic elections. The Park Commissioners receive no remuneration for their services, but the Board has never lacked the candidature of public-spirited citizens who have been willing to devote much time and energy to the administration of this branch of the civic activities. Funds are supplied by annual appropriations by the City Council, and for special purposes by bylaws voted upon by the ratepayers.

The general policy laid down by the Board has been guided by the consciousness that the parks and playgrounds belong to the people. They have therefore sought to secure in this regard the maximum of facilities of a recreational and educational kind. They have sought to preserve as far as possible natural features of beauty. They have endeavored to exercise care in planning any new work so that it should conform to the existing order of things so far as that order was good. At the same time they have always had an eye to future developments, in their desire for gradual improvement.

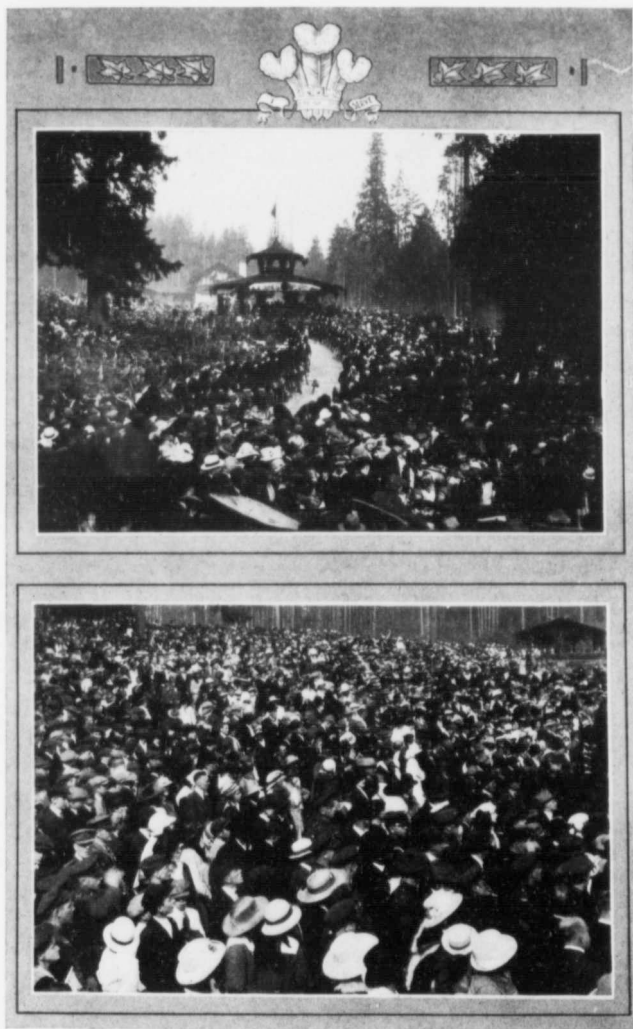


1. Civic Arch Erected in Honor of Visit of H.R.H. the Prince of Wales

2. Entrance to Stanley Park



*H.R.H. the Prince of Wales at Stanley Park, September 22, 1919*



*Crowds at Stanley Park at Visit of H.R.H. the Prince of Wales*





*Capilano Canyon*

## PARKS AND RESORTS, VANCOUVER, B. C.

The recent visit of His Royal Highness the Prince of Wales to Vancouver gives to this publication a unique element of interest. Several illustrations of the event will be found in it, in which the photographer has been particularly fortunate, and which form a pleasant souvenir of the occasion. A few halftones of scenery in the neighborhood of Vancouver have also been introduced.

Next to Stanley Park, the largest and most important area of the system is Hastings Park of 160 acres, which, in many of its features, originally resembled Stanley Park in its primeval character. Eighty acres of this park were allotted to the Exhibition Association when the latter enterprise came into existence. Under their superintendence extensive buildings were erected, and later on very large improvements made under the direction of the Park Board. Approximately seventy acres have been recently transferred to their superintendence, with a view to future extensions of their work. During the late war Hastings Park came into much prominence as a military depot, and large numbers of troops were from time to time quartered there. The progress of the Vancouver Exhibition in spite of many obstacles, and the gradually increasing importance of its annual shows of manufactures and agricultural and horticultural productions, testify to the zeal and discernment of its directors.

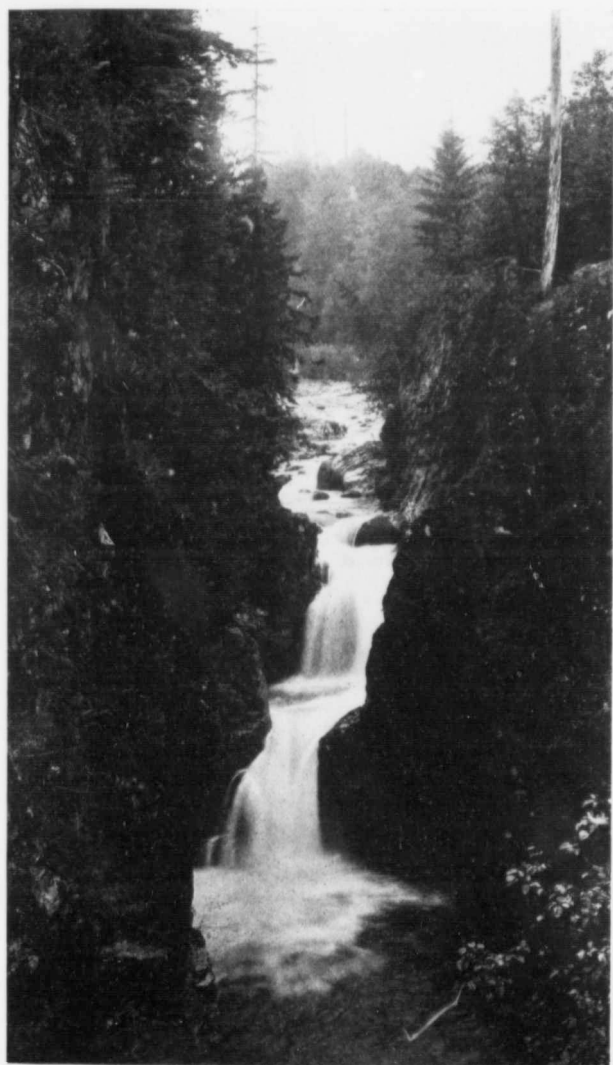
On page 20 will be found a table which gives a comprehensive view of the park system of Vancouver, some of the salient features of which are reviewed in succeeding pages with somewhat more detail, while the story of these breathing spaces is further told in the accompanying illustrations.

### STANLEY PARK

Stanley Park was the first park to be acquired by the City of Vancouver, in 1887. It was originally a Dominion Government military reserve, and after the city was incorporated in the year 1886 a petition was presented to the Governor-General of the Dominion of Canada praying that such military reserve should be handed over to the city and held as a public park, whereupon an order-in-council, dated the 8th day of June, 1887, was passed, vesting the reserve in the city for use as a park. It was opened by Lord Stanley, the then Governor-General, in 1889, and his name was conferred upon it. On November 1, 1908, the Minister of Militia and Defence of the Dominion of Canada leased Stanley Park to the City of Vancouver, B. C., for a period of ninety-nine years, renewable.



*Falls of the Sproy of Pearls, Indian River Park*



*The Falls, Lynn Canyon*



*A Driveway through the Giants in Stanley Park*

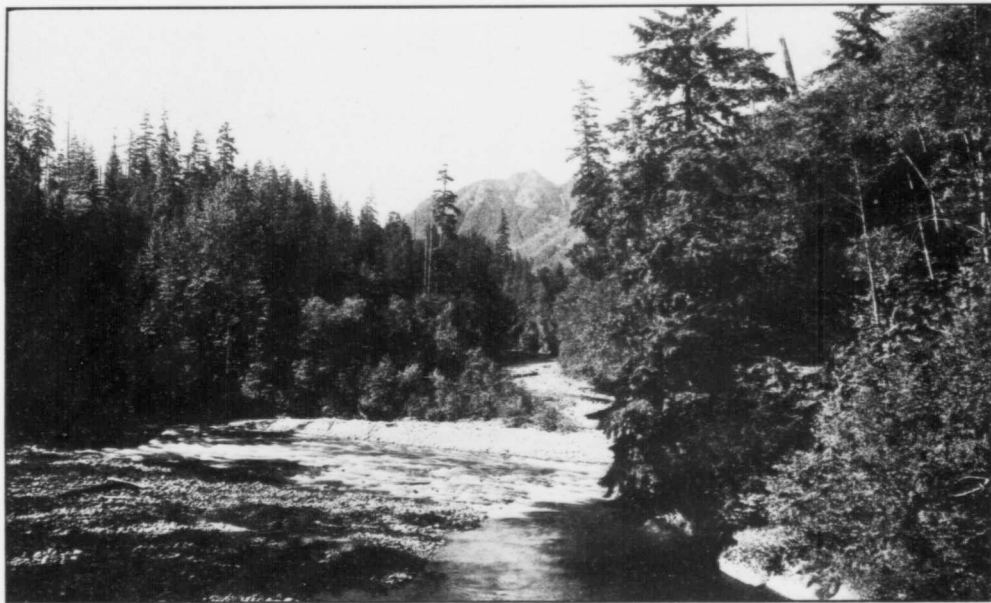


*Woodland Glade, Stanley Park*

## VANCOUVER PARKS, BEACHES AND PLAYGROUNDS, 1919

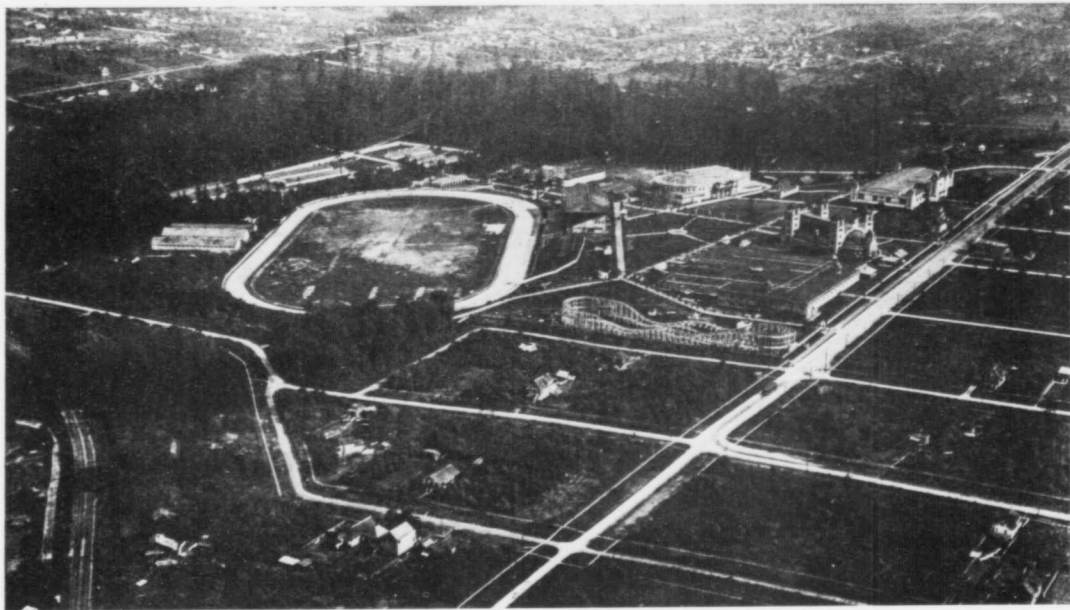
NAME	AREA in acres	LOCATION	FEATURES	CAR LINES
Alexandra Park and English Bay Beach.....	4.3	Beach Ave., Chilco and Bidwell Sts.....	Pier, Bathing Beach, Bath Houses, Bandstand, Floral.....	Davie and Robson All lines
Cambie Park.....	3.0	Cambie, Beatty, Georgia and Dunsmuir	Football, Lacrosse and Baseball Gds.	
Clark Park.....	7.0	Commercial and Woodland Drives, 14th and 15th Aves. East.....	Football and Lacrosse Grounds, Tennis Courts, Wading Pool, Bandstand, Picnic Grounds, Floral.....	Grandview-4th Ave.
Connaught Park.....	14.8	Larch and Vine Sts., 10th and 12th Aves. West.....	Unimproved.....	Broadway West
Douglas Park.....	1.9	Broadway East and 11th Ave., Keith and Clark Drives.....	Unimproved.....	Broadway East
Garden Park.....	2.4	Garden and Templeton Drives, 2nd and 3rd Aves. East.....	Unimproved.....	Grandview-4th Ave.
Hastings Park.....	160.0	Pender St. East, Burrard Inlet, Renfrew and Rupert Sts.....	Exhibition Grounds.....	Kitsilano-Powell St. and Hastings East
Kitsilano Beach and Park.....	17.6	Balsam, Cornwall, Yew, Arbutus and Maple Sts. and English Bay.....	Floral, Tennis Courts, Bathing Beach, Bath House, Bandstand and Picnic Grounds.....	Kitsilano-Powell St.
McBride Park.....	5.5	Collingwood and Blenheim Sts., 4th and 5th Aves. West.....	Football, Lacrosse, Baseball and Cricket Grounds.....	Grandview-4th Ave.
McLean Park.....	2.4	Harris, Union, Dunlevy and Jackson Sts.	Supervised Children's Playground, Bandstand.....	Pender-Harris St.
Oppenheimer Park.....	2.4	Powell, Cordova, Dunlevy and Jackson.....	Football, Lacrosse, Baseball Grounds	Kitsilano-Powell Sts.
Pandora Park.....	3.7	Pandora, Albert and Nanaimo Sts., Templeton Drive.....	Football, Lacrosse and Baseball, Tennis Courts and Floral.....	Hastings East
Robson Park.....	2.7	St. George and Carolina Sts., 13th and 14th Aves. East.....	Football, Lacrosse, Baseball Grounds, Tennis Courts, Bandstand, Floral.....	Kingsway
Stanley Park.....	1,000.0	Near First Narrows between Burrard Inlet and English Bay.....	Recreation Grounds, Children's Playground, Zoo, Bathing Beaches, Picnic Grounds, Bandstand, Pavilion.....	Pender-Harris Sts.
Strathcona Park.....	5.5	Yukon and Cambie Sts., 10th and 12th Aves. West.....	Football, Lacrosse, Baseball and Cricket Grounds, Tennis Courts, Bandstand, Floral.....	Fairview Belt Line Kingsway
Sunnyside Park.....	2.4	Glen Drive, Inverness St., 17th and 15th Aves. East.....	Partially developed, Tennis Courts and Floral.....	Grandview-4th Ave.
Tatlow Park.....	2.7	Poin. Grey Road, 3rd Ave., McDonald and Bayswater Sts.....	Tennis Courts, Picnic Grounds and Floral.....	Grandview-4th Ave.
Templeton Park.....	4.2	Templeton and Garden Drives, Turner and Union Sts.....	In course of development.....	Hastings East
Victoria Park.....	2.4	Victoria and Salisbury Drives, Grant and Kitchener Sts.....	Floral.....	Grandview-4th Ave.
Woodland Park.....	1.8	Woodland and McLean Drives, Keefer and Harris Sts.....	Football, Lacrosse and Baseball.....	Pender-Harris Sts.
Coal Harbour Property (southern foreshore).....	2.2	Barclay and Alberni Sts., Park Road and Coal Harbour.....	Improved.....	Pender-Harris Sts.
Little Mountain.....	100.0	28th and 35th Aves., bounded on East by Ontario St.....	Unimproved: (held under joint option by the City and the Municipalities of Point Grey and South Vancouver)	Davie-25th Ave. Oak St. Main St.
<b>Total Acreage</b> .....	<b>1,308.9</b>			

Little Mountain.....	100.0	28th and 35th Aves., bounded on East by Ontario St.....	Unimproved: (held under joint option by the City and the Municipalities of Point Grey and South Vancouver)	Davie-25th Ave. Oak St. Main St.
<b>Total Acreage.....</b>	<b>1,308.9</b>			



Capilano River





*Aerial View of Exhibition Grounds, Hastings Park—Photograph by Aerial League of Canada*

COPYRIGHT BY  
STUART THOMSON

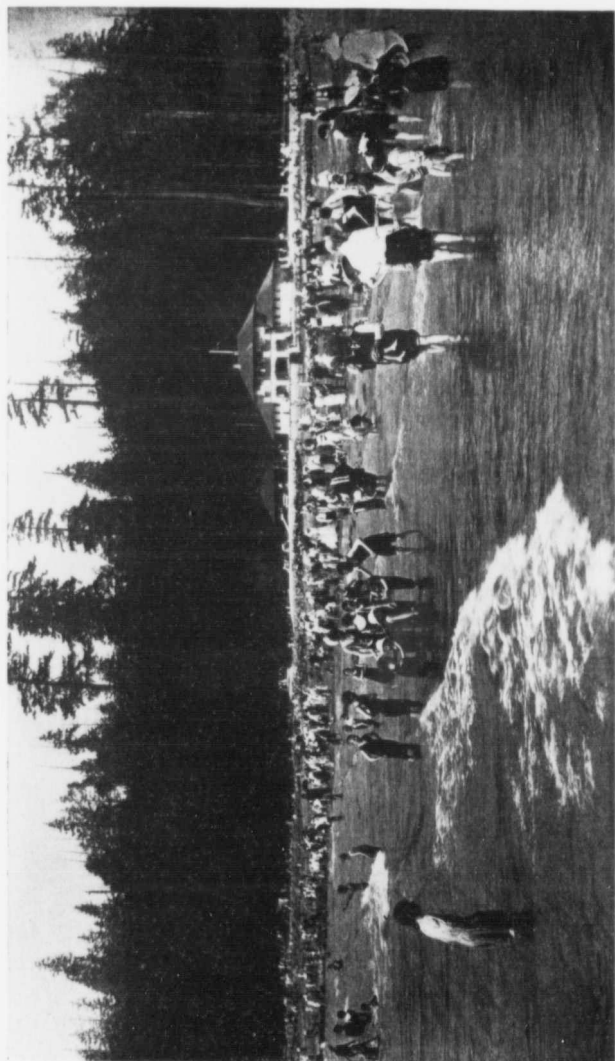


PAGE TWENTY-THREE

*Forestry Building, Hastings Park*



*English Bay Bathing Beach and Pier*



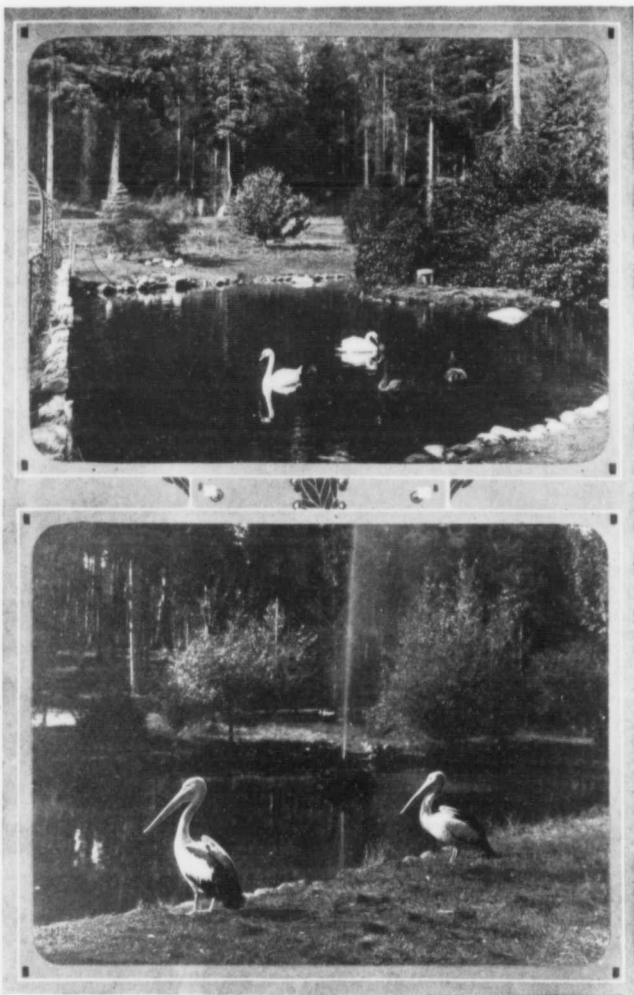
Bathing Beach, Second Beach



*Scene in Clark Park*

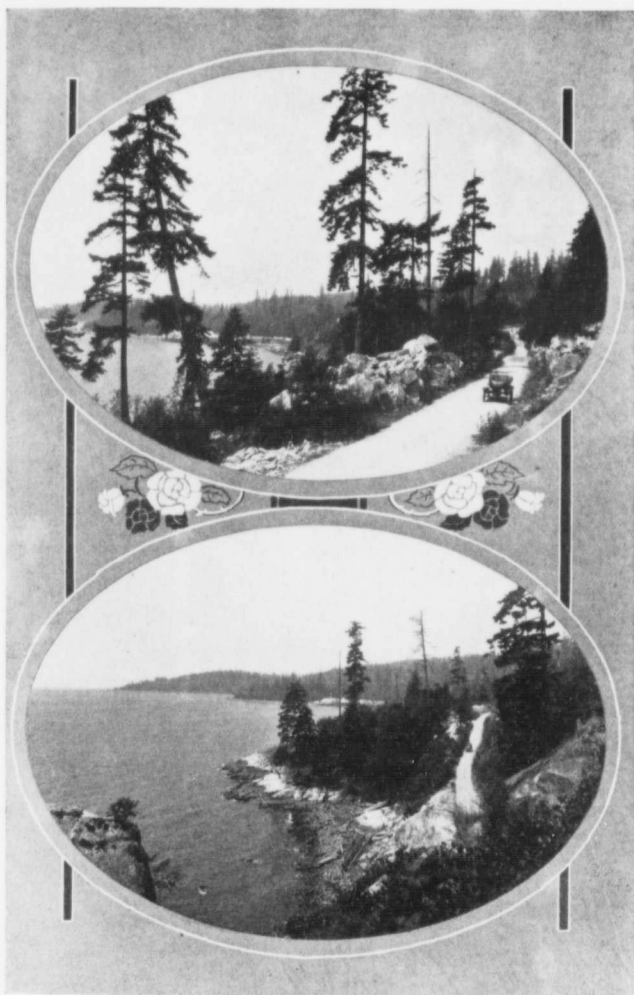


*Children's Wading Pool, Clark Park*



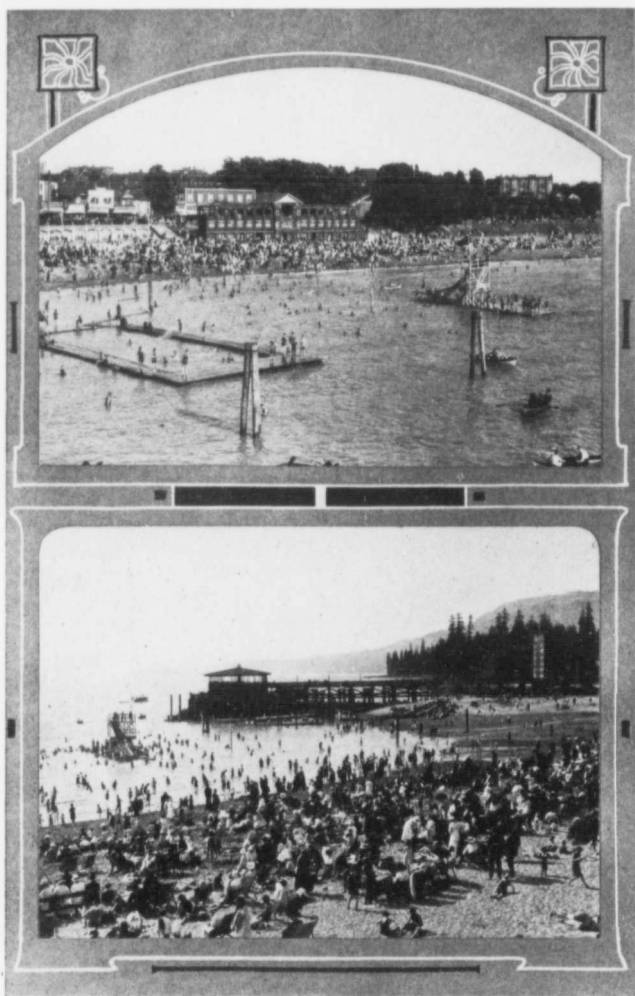
*Scenes in Stanley Park*

1. *The Swans*                      2. *The Pelicans*

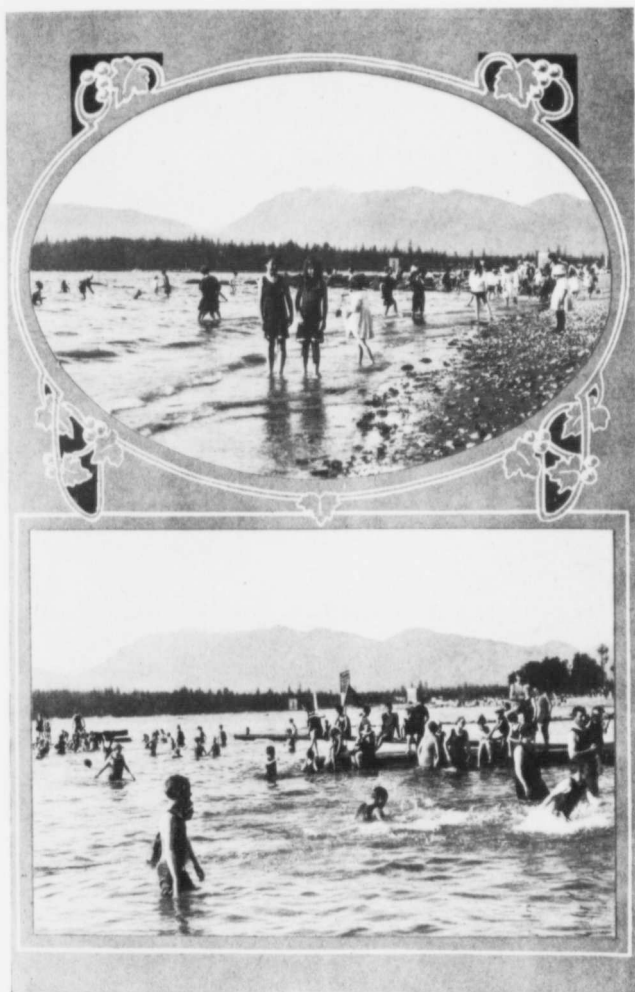


*Scenes on the Marine Drive, North Shore*

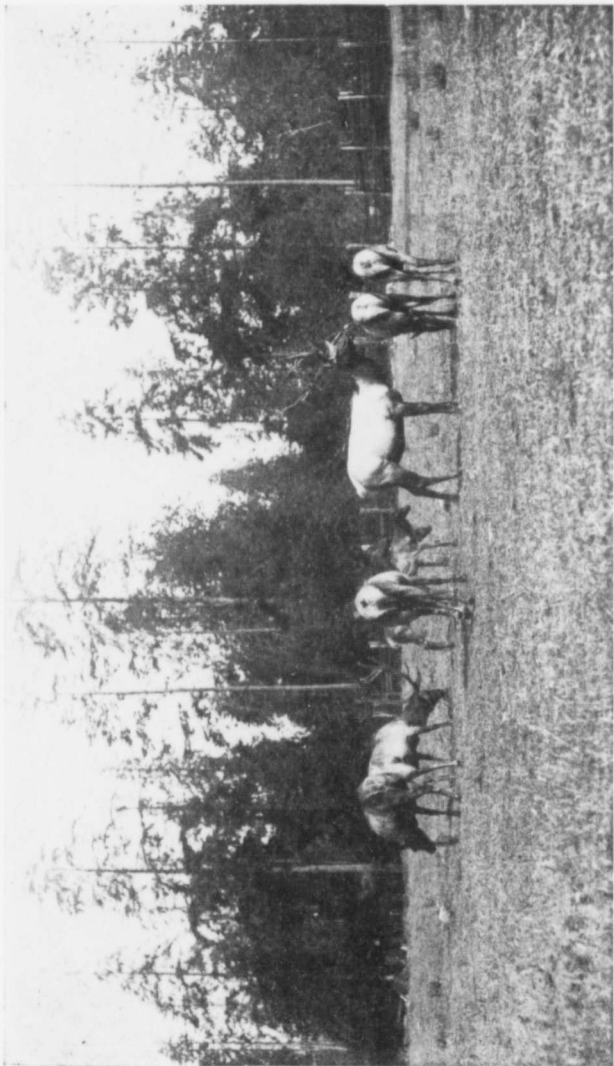




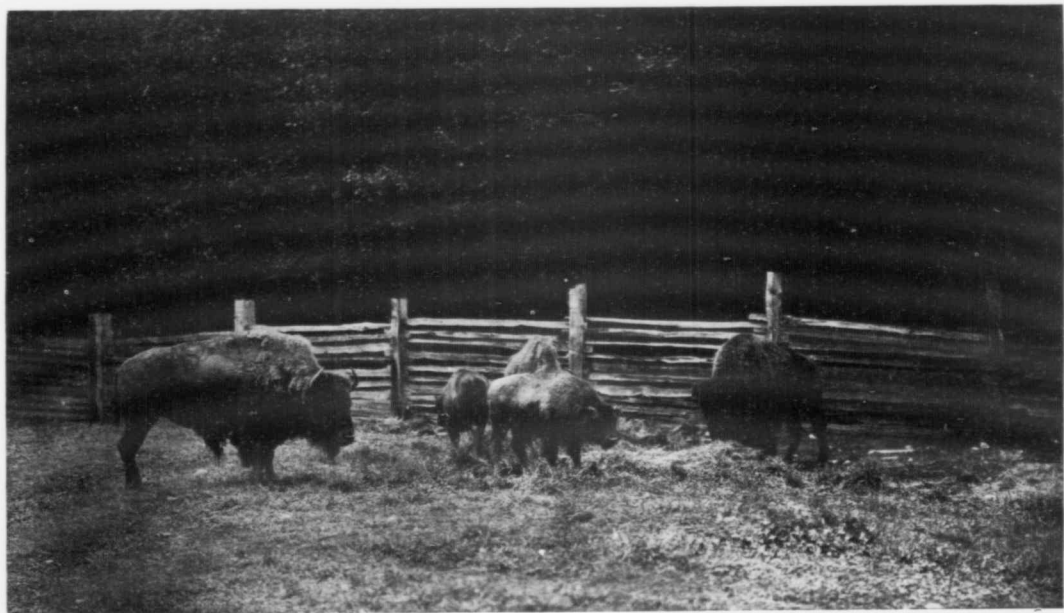
*English Bay Bathing Beach*



*Kitsilano Bathing Beach*



*Elk, Stanley Park*



*Buffalo, Stanley Park*



*The Driveway, Stanley Park*

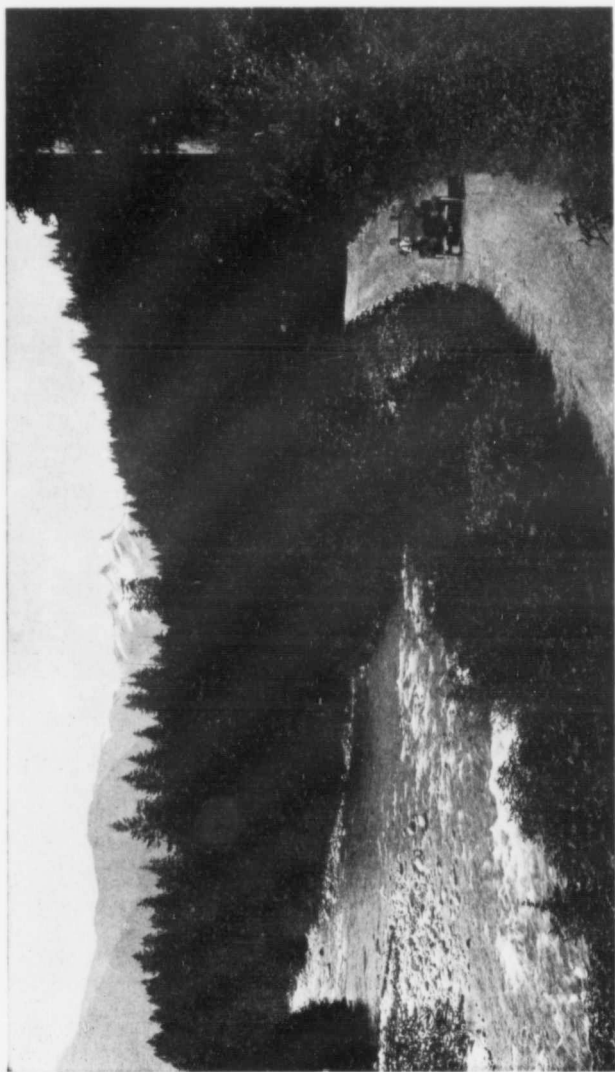
## PARKS AND RESORTS, VANCOUVER, B. C.

From 1887 to 1888 Stanley Park was administered by the City Council. Upon the appointment of the Park Commission in 1888 the government of Stanley Park and the park system in general was placed in the hands of the Board of Park Commissioners.

During recent years many important improvements have been carried out, which have enhanced the natural beauty of this park, which may well be considered one of the finest in the world. Considerations of space forbid the inclusion here of even a tithe of what has been eloquently said and written in praise of this unique area that combines within itself something of the majesty and magic of the primeval forest with modern recreative advantages. Distinguished authors and travellers have included descriptions of it in their books, poets have sung of it, painters have transferred its charms to canvas. There are recesses of its forest where one might expect to meet an aboriginal Indian. There are spaces where the tourist finds himself in the midst of modern crowds. It is favored by lovers; it is beloved by children. Motorists, cyclists and equestrians find equal delight in its many miles of smooth and well-kept roads, while the botanical student is enchanted by the variety of its vegetation, and the nature-loving pedestrian here enjoys a refuge from sublunary cares.

Special features of Stanley Park may be thus summarized:

1. Its splendid area of a thousand acres.
2. Bathing beaches and bath houses of great extent and convenience, which are annually and for months the resort of natatory crowds.
3. Motoring driveways through delightful scenery totalling eight miles.
4. A series of thirty miles of forest trails unequalled in beauty.
5. Gigantic firs and cedars of immense size and antiquity.
6. Beaver lake and streams, where the beaver is actually at work, and which are being stocked with fish from the Dominion Government pisciculture tanks.
7. A zoological collection of 133 animals of over 30 species, and 327 birds of more than 50 varieties.
8. A buffalo park where this interesting relic of the Canadian plains may be seen alive.
9. A deer park containing fine specimens of elk.
10. Viewpoints from which fine prospects over sea and mountains are obtained.



*Forest, Mountain and Stream, Copilano*



*Vista from the Marine Drive*





*Yachting Scene, English Bay, with Stanley Park in Distance*

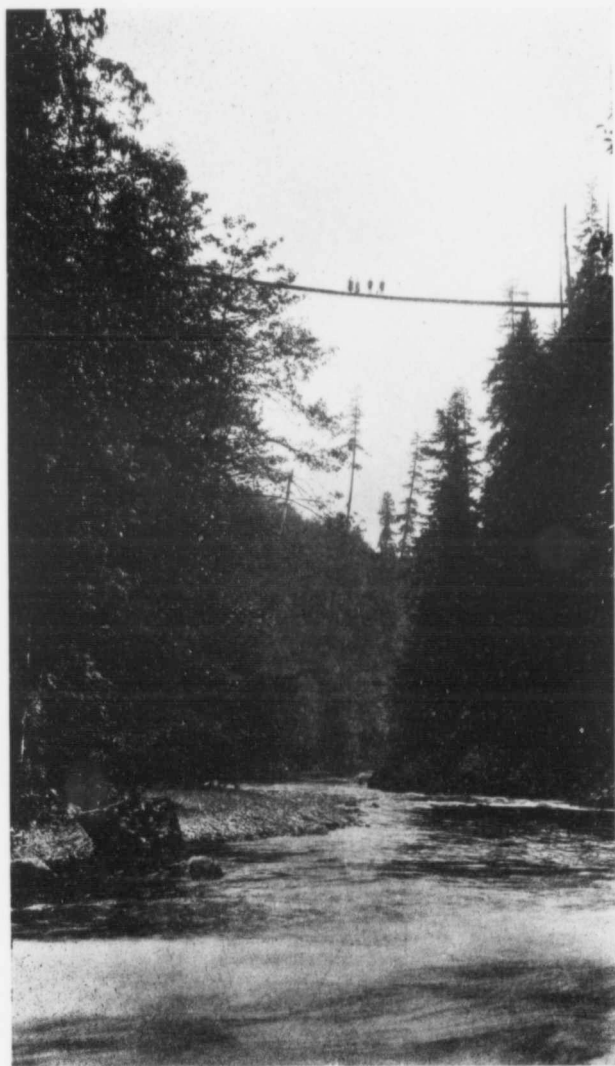


Shores of Stanley Park

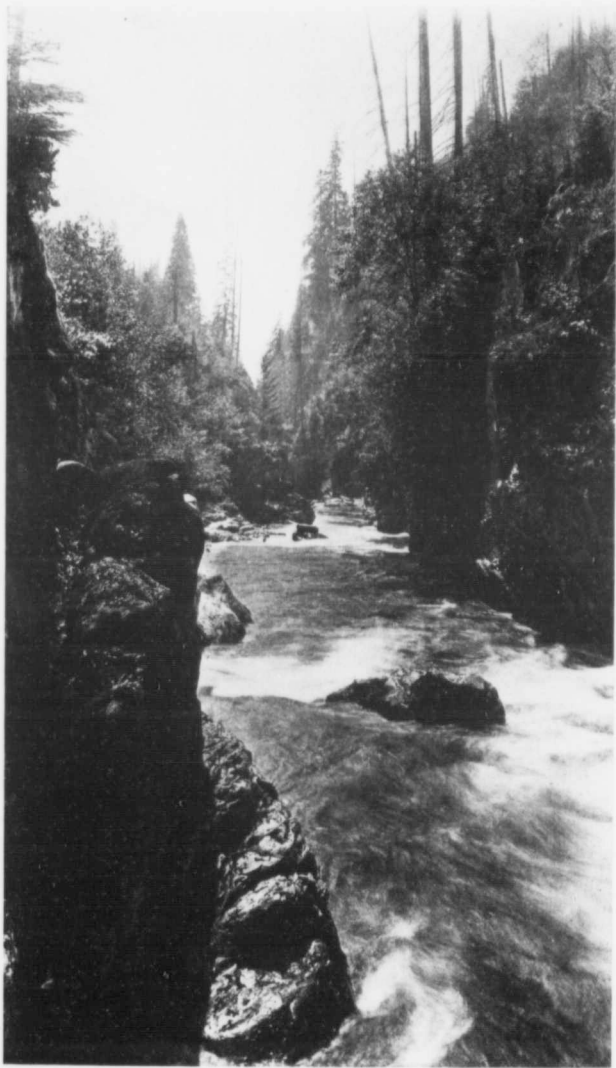




*A Giant Cedar, Stanley Park—Circumference 56 Feet*



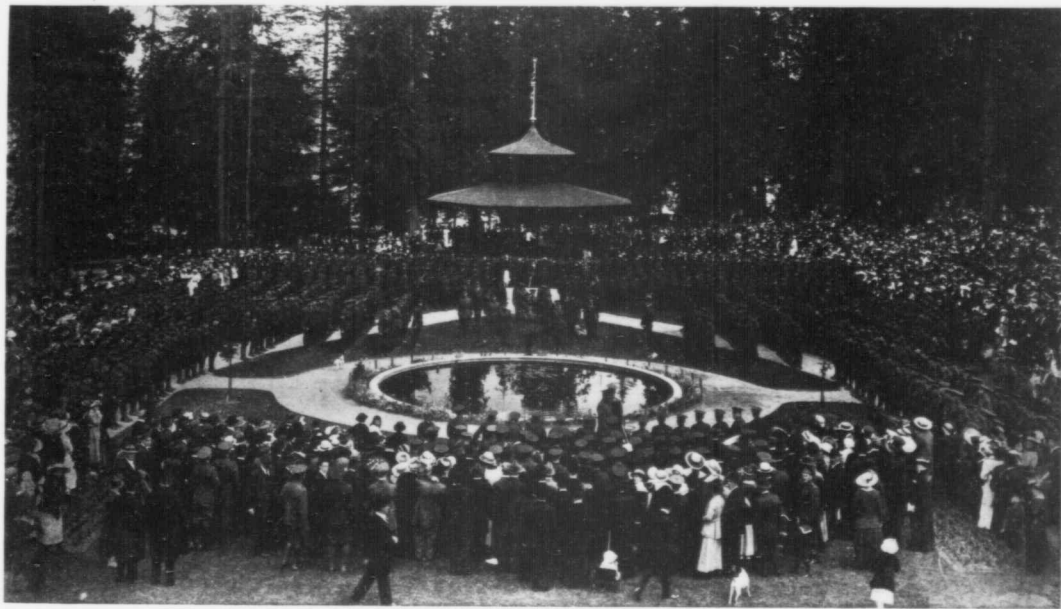
*Suspension Bridge over Capilano Canyon, 225 Feet from Bed of Stream*



*Seymour Canyon*



*The Rotine, Stanley Park*



*158th Battalion on Parade in Stanley Park Before Leaving for the Front*



## PARKS AND RESORTS, VANCOUVER, B. C.

11. Greenhouses and propagating houses, and a nursery of 6½ acres.
12. Extensive ball grounds and cinder and asphalt track at Brockton Point.
13. Refreshment pavilion of commodious size, surrounded by lovely grounds.
14. Bandstands in fine situations, where occasional concerts are attended by thousands.
15. Extensive playgrounds and areas and conveniences for picnics.

### ENGLISH BAY

Our most crowded beach in the tourist season is that at English Bay, where there is a most expansive view of sea and mountains. Lying southeast of Stanley Park and immediately adjacent to it, it is a favorite resort of citizens, and here occasional band concerts are held. The bathing facilities are of the best and are daily appreciated by thousands, while capable attendants are always on hand to give services and advice to visitors.

The Vancouver Swimming and Life-saving Association, with headquarters at English Bay, has done much good work in encouraging the art of life-saving and the teaching of swimming to juveniles, and their work has been greatly facilitated by an enclosed swimming and water polo course, provided by the Park Commissioners. For children all bathing privileges are free, both here and at other beaches under the control of the Board.

### CLARK PARK

This park of seven acres is in a class by itself, from the fact that it was the gift of a public-spirited citizen, Mr. E. J. Clark, who dedicated the area to the city in 1889. It contains a wading pool, which will always be a source of delight to the children, especially as this district is so far removed from the sea. This is undoubtedly one of the finest examples of our city parks, and it contains many elements of beauty. It is a pity that many of our citizens have never visited it.

### McLEAN PARK

In this park we turn from the rural, and the charm of the primeval forest to the heart of the city. Named after a former mayor of Vancouver, this area represents an altruistic and worthy effort in favor of the children in the most crowded

PARK STATISTICS TO DECEMBER 31st, 1918

NAME OF PARK	Year of Purchase or Taking	From Whom Purchased or How Acquired	Cost to Date			Area in Acres	Land Valuation 1918	Remarks
			Land*	Construction	Total			
Alexandra Pk. & Eng. Bay Beach	1902-11	Various	\$143,438.75	\$91,389.38	\$234,828.13	4.3	\$ 500,000.00	Improved
Cambie Park	1902	C. P. R.	25,000.00	825.00	25,825.00	3.0	600,000.00	Improved
Clark Park	1889	Dedicated to City by Mr. E. J. Clark		17,324.03	17,324.03	7.0	75,000.00	Improved
Connaught Park	1912	C. P. R.	145,616.89	175.00	145,791.89	14.8	137,750.00	Unimproved
Douglas Park	1911	Various	38,125.10		38,125.10	1.9	36,000.00	Unimproved
Garden Park	1912	P. W. Charleson	43,505.00	1,245.57	44,295.57	2.4	41,500.00	Unimproved
Hastings Park	1889	Provincial Government Grant.		51,617.26	51,617.26	160.0	Not assessed	Improved
Kitsilano Beach and Park	1909-13	Portion purchased from C. P. R.	63,600.00	12,407.44	76,007.44	4.3	110,000.00	Improved
McBride Park	1911	Portion leased from C. P. R.		23,089.75	23,089.75	13.3	Not assessed	Partially Impd.
McLean Park	1902	Provincial Government grant		6,156.76	6,156.76	5.5	Not assessed	Partially Impd.
Oppenheimer Pk.	1902	Yorkshire Guarantee Assn.	15,900.00	8,772.55	24,672.55	2.4	165,000.00	Improved
Pandora Park	1912	Yorkshire Guarantee Assn.	31,800.00	750.00	32,550.00	2.4	250,000.00	Improved
Robson Park	1909	Various	130,663.82	9,056.29	139,720.11	3.7	126,000.00	Partially Impd.
Stanley Park	1887	Henry James	21,200.00	5,794.72	26,994.72	2.7	45,000.00	Improved
Strathcona Park	1902	Held under lease from Dominion Government		368,878.63	368,878.63	1,000.0	Not assessed	Improved
Sunnyside Park	1912	C. P. R.	5,306.00	8,144.96	13,450.96	5.5	80,000.00	Improved
Tatlow Park	1907	J. Adam	39,880.38	5,110.16	44,990.54	2.4	38,300.00	Partially Impd.
Templeton Park	1912	T. H. Calland	10,600.06	4,825.75	15,425.75	2.7	40,000.00	Improved
Victoria Park	1909	City of Vancouver and F. L. Beecher	(a) 44,600.99	2,064.26	46,665.25	4.2	68,000.00	Partially Impd.
Woodland Park	1912	Mrs. A. M. Seymour	28,100.00	5,196.39	33,296.39	2.4	40,000.00	Improved
Coal Harbour Property (Southern foreshore)	1908	Dominic Burns	77,766.00	2,283.86	80,049.86	1.8	75,000.00	Partially Impd.
Little Mountain	1911	Various	(b) 84,953.36	4,812.27	89,765.63	2.2	157,500.00	Unimproved
Street Ends		Held under joint option from C.P.R. by Pt. Grey, South Vancouver and City of Vancouver				100.0	Not assessed	Unimproved
Str. intersections				500.23	500.23		Not assessed	Improved
Boulevards, etc.		Property formerly under option of purchase, since expired		4,543.58	4,543.58		Not assessed	Improved
			\$949,601.29	634,963.54	1,584,565.13	1,308.9	\$2,585,050.06	

\*Includes loan expenses.

(a) Southerly block only; northerly block transferred by City of Vancouver.

(b) Bridges By-law No. 603.



*Kitsilano Bathing Beach*

o  
t  
o  
t

t  
s  
a  
v  
o  
f  
n  
e  
c  
i  
w  
a  
o  
n  
w  
f  
f

ce

## PARKS AND RESORTS, VANCOUVER, B. C.

district of Vancouver. As a supervised children's playground it is exceedingly popular and useful. Its area is 2.4 acres, it has a permanent structure in the shape of a shelter and dressing room, and its various appliances for athletic exercises are exceedingly popular among the youth of the neighborhood.

### KITSILANO PARK AND BATHING BEACH

Among the salient features of the park system of Vancouver, Kitsilano Beach Park and its bathing beach of eight acres call for mention as being among the most popular of the list. Ten years ago the park was a wilderness of stumps, old logs and underbrush. Now it is a place of lawns, pleasant walks and flowers. The adjacent extensive bathing beach, with its bath house and swimming instructor, is an outstanding attraction to this part of the city.

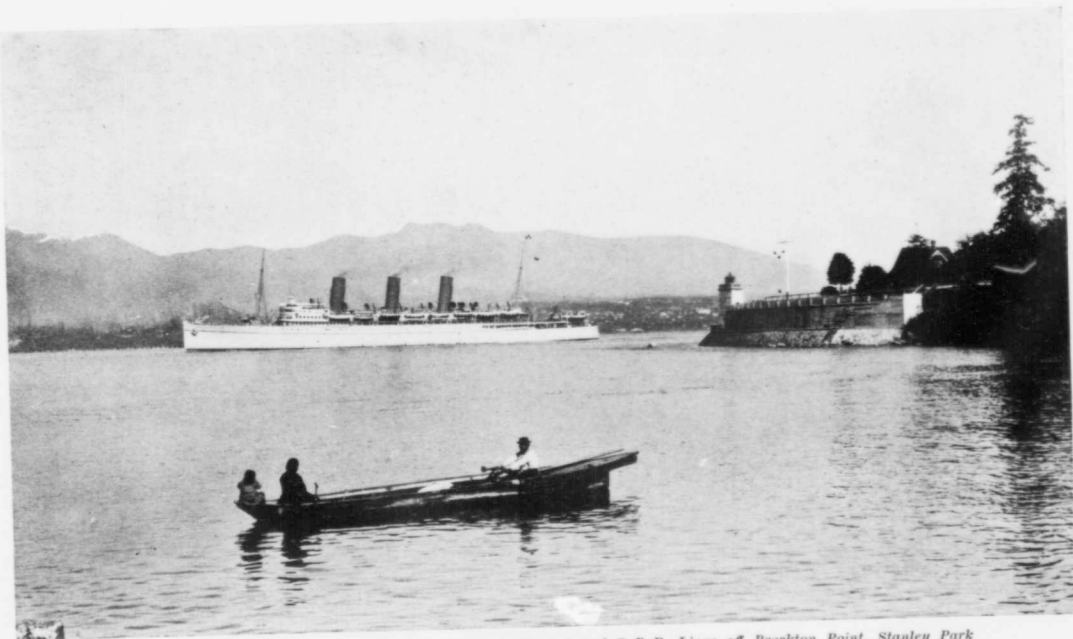
\* \* \*

### PROJECTS OF THE FUTURE

The Board of Park Commissioners in the discharge of their duties have usually kept an eye on future developments whereby the areas under their control may be of use in the city's progress. One of the subjects that has received considerable attention by the Board is the provision of an

#### INDOOR SALT-WATER SWIMMING BATH

Aside from the importance of the city having such an institution from the standpoint of the health of our citizens and stimulating healthy recreation, there is to be considered its value as an attraction from a tourist point of view. The facilities which this city offers for the successful operation of a bath house of this character are unquestioned, and its establishment would fill a want which has long been felt and recognized. There is no reason why bathing should not be possible the year round; even in the summer months there are many people who for various causes are unable to indulge in outdoor bathing, and to these an indoor bath would be a boon. Again, the provision of brine baths, which are proposed in connection with the building—recognized as invaluable for the benefit of those suffering from muscular and other ailments—would be of prime importance, and there can be no doubt that many undergoing treatment for such maladies would be attracted to our city were it known that we had such facilities to offer. The project has received much consideration from the Commissioners, and plans for the proposed bath are in



*Marine Transportation, Primitive and Modern—Indian Dugout and C. P. R. Liner off Brockton Point, Stanley Park*



PAGE FIFTY-THREE

*"The Seven Sisters," Stanley Park—A Group of Douglas Fir Trees, Height 255 Feet*

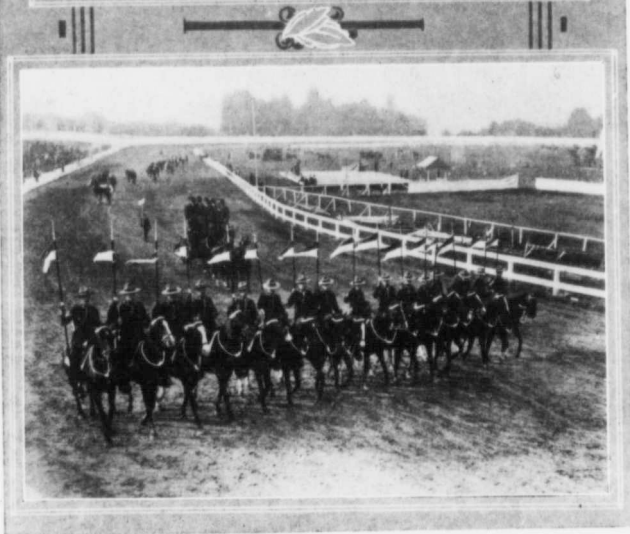
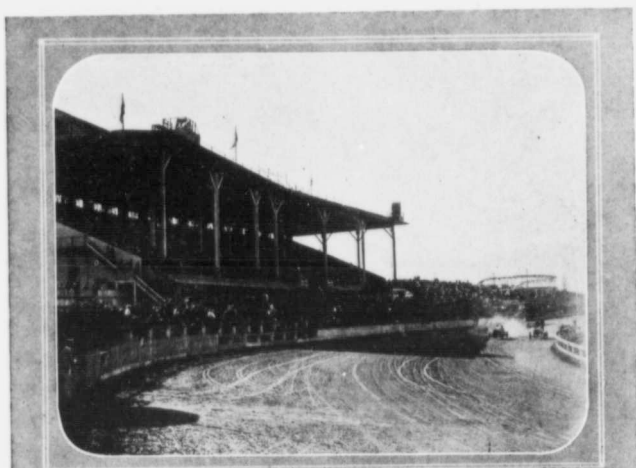
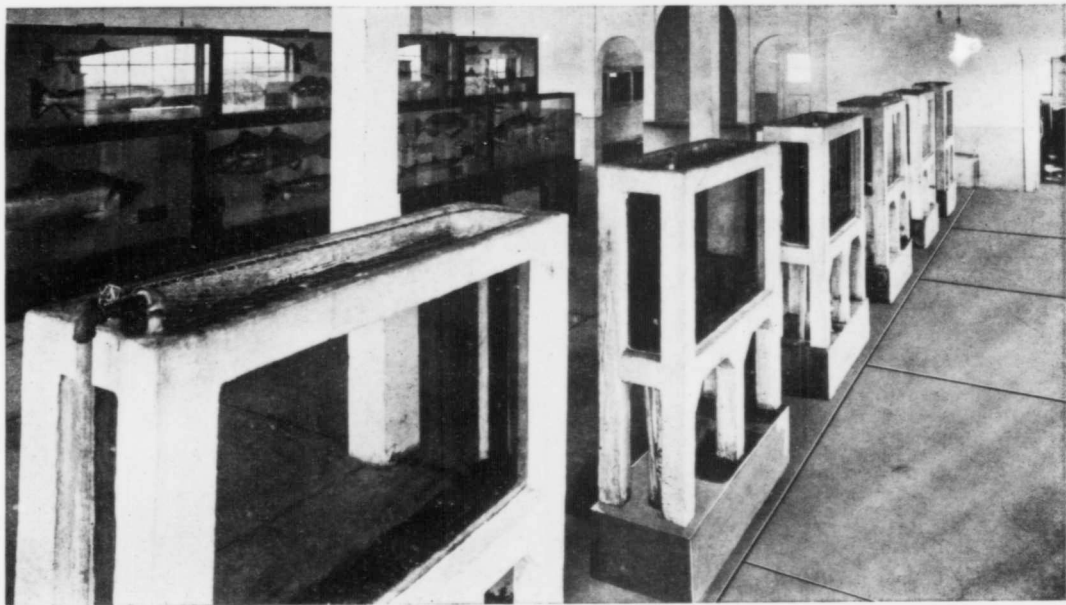


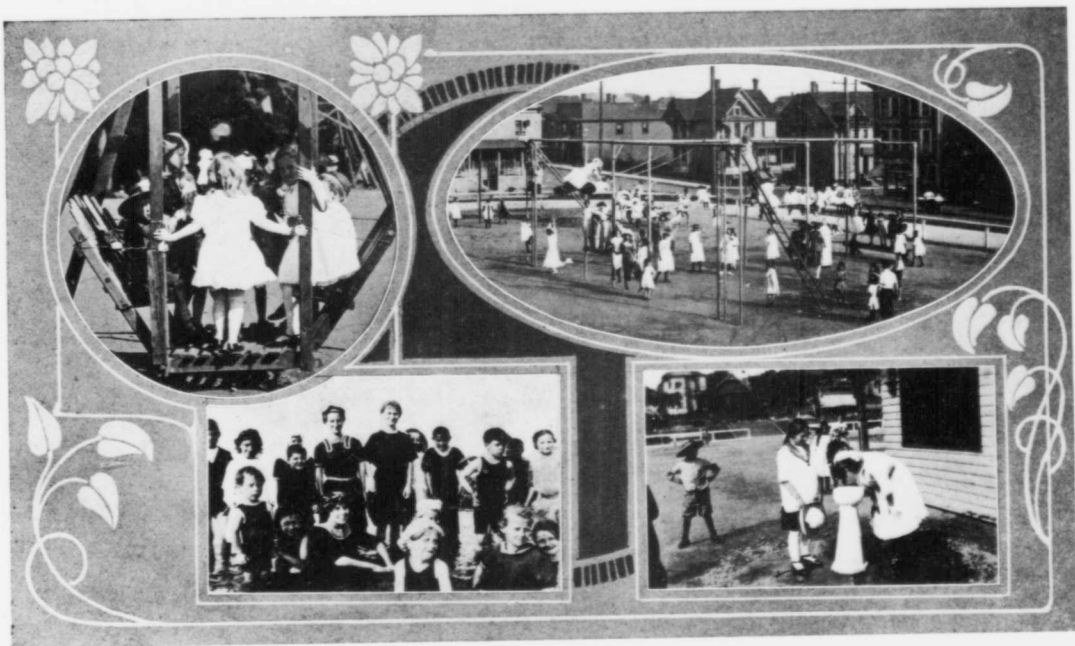
PHOTO BY STUART THOMSON

Scenes at Vancouver Exhibition, Hastings Park  
1. Automobile Races                      2. Parade by R. N. W. M. P.

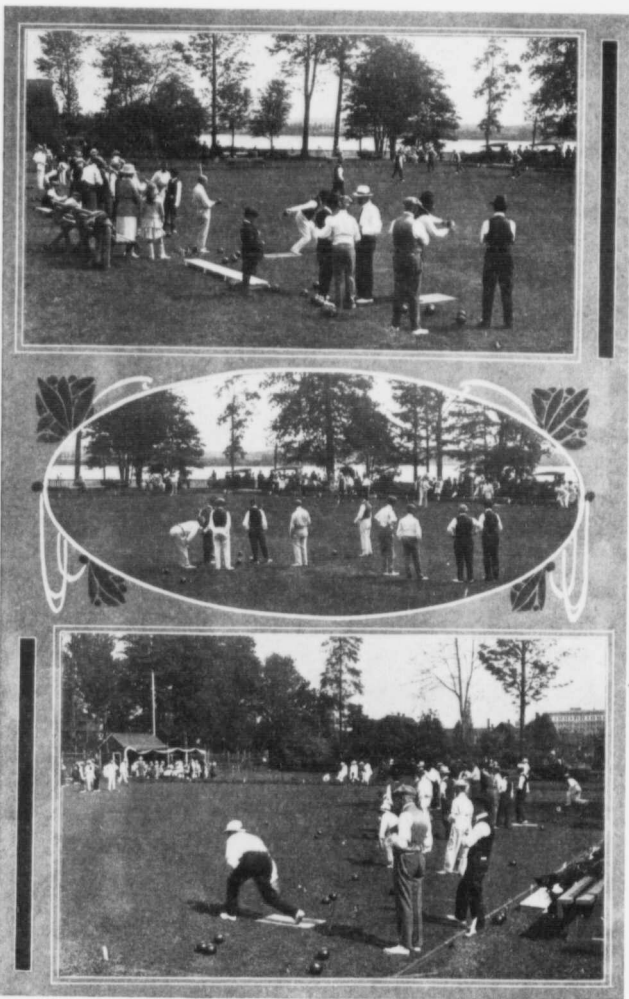




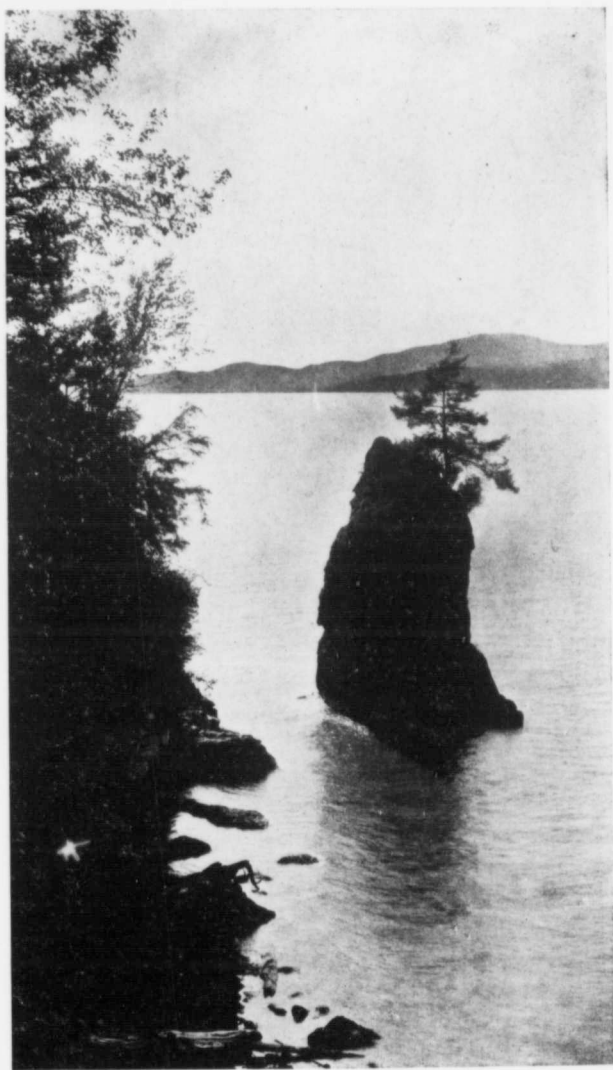
*The Aquarium, Hastings Park*



*McLean Playground—Play Scenes*



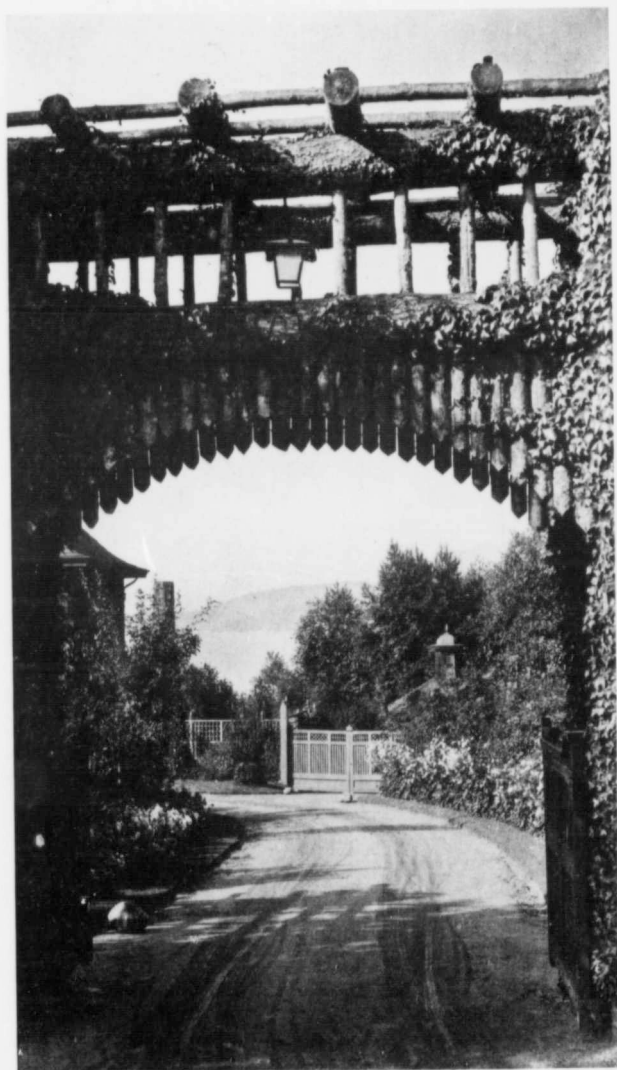
*Bowling Greens, Stanley Park*



*Siwash Rock, Stanley Park*



*The Twin Falls, Stanley Park*



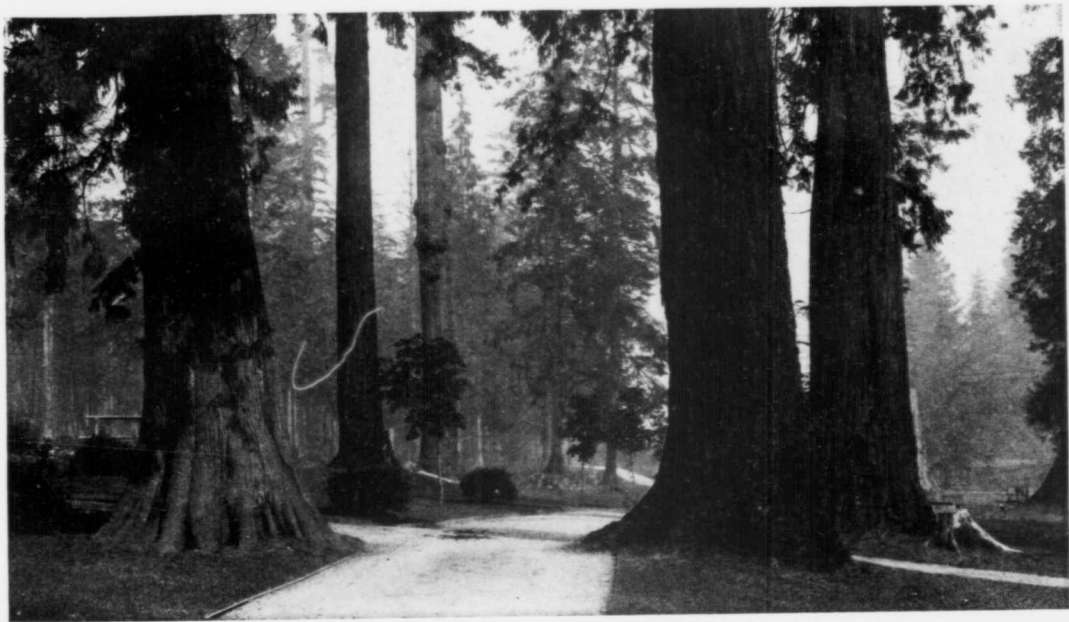
STANLEY PARK



THE HOME OF THE SWANS.

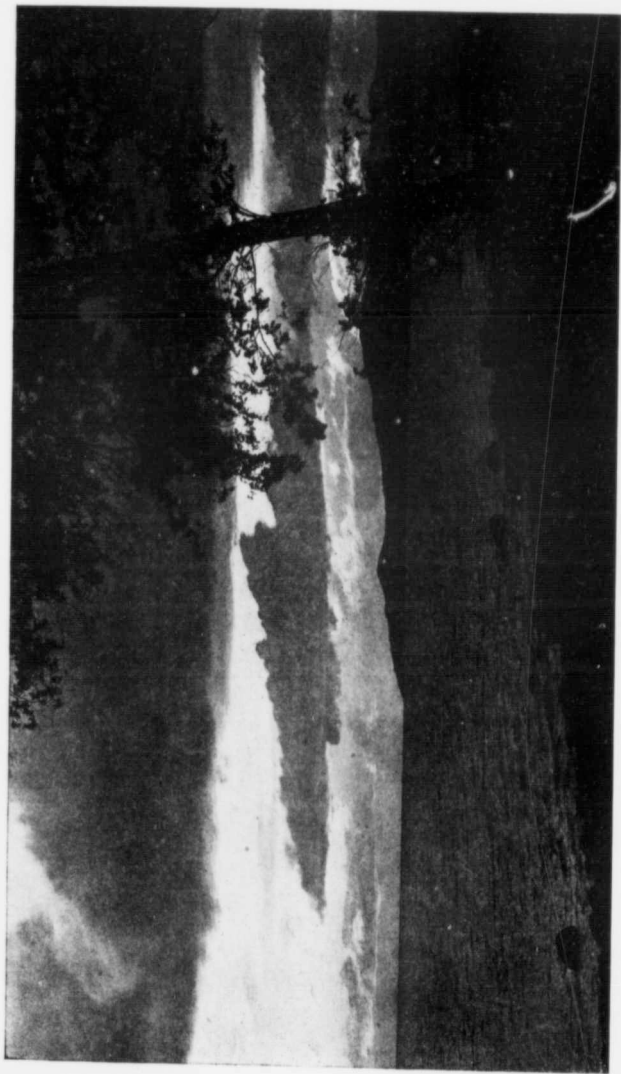


A MOUNTAIN VIEW FROM THE UPPER POND.



*A Typical Walk, Stanley Park*





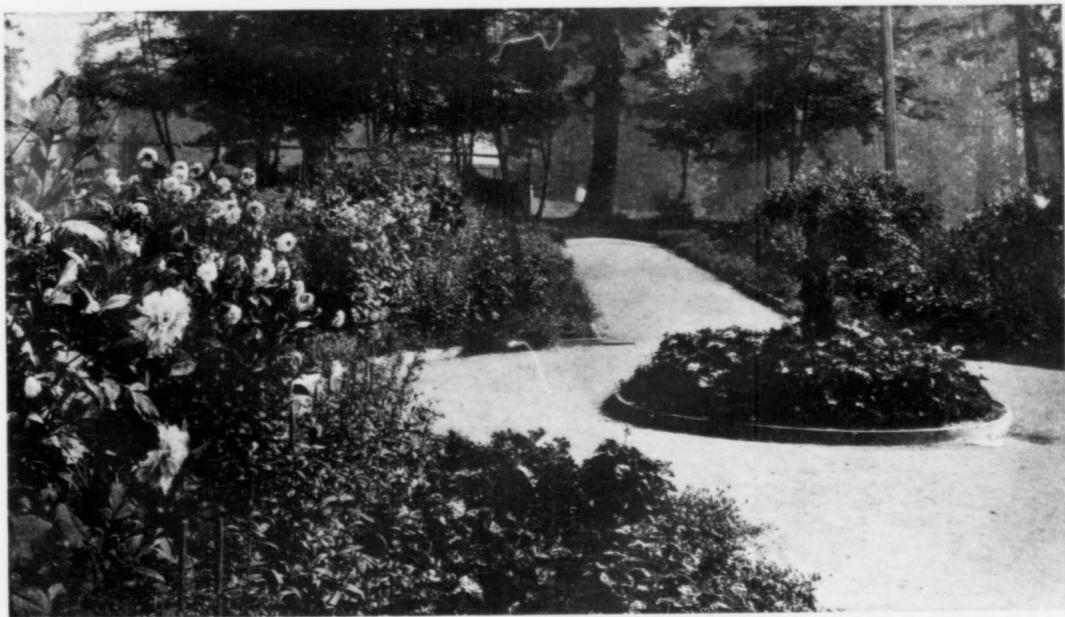
*Sunset Over English Bay*



*The Picnic Grounds at Second Beach, Stanley Park*



*A Driveway Scene—Ferguson's Point, Stanley Park*



*The Gardens, Stanley Park*



PAGE SIXTY-SEVEN

*Scene in Tallow Park*

## PARKS AND RESORTS, VANCOUVER, B. C.

course of preparation by the Board's engineer. It may be hoped that in the near future it may be possible to carry out a proposal which would be a great benefit to the tourist and would prove of invaluable sanitary advantage to thousands.

### CIVIC GOLF LINKS

The popular demand for civic golf links, which is general in many of the larger cities on this continent, and which in numerous cases has been met by their provision, has been greatly in evidence during the past year or two, and the Park Commissioners have devoted some consideration to the topic. Recognizing the need of a public golf course and the advantages that would accrue to the city by the provision of facilities for this popular pursuit, a committee has been appointed to go into the question with a view to arriving at the possibilities of the case.

### FISHING IN BEAVER LAKE

The proximity of Stanley Park to the city has always been a chief recommendation of its various attractions. But the idea that Beaver Lake, within its borders, may be made a very tempting resort for the followers of Izaak Walton makes the nearness of the park additionally attractive. Yet this seems likely to be the case in the near future. Under the advice of experts in pisciculture, thousands of young fish of various kinds and suitable to the locality are being placed in the lake and its adjacent streams and there seems to be every prospect that fishing in these preserves may become a recreation to many tourists and city dwellers.

\* \* \*

In conclusion, it is to be noted that the pictorial has been the medium sought in this publication to tell the story of achievement, rather than that of prosaic statistics. It appeals to the imagination and creates an impression which is more lasting. If as a result it should be the means of stimulating greater interest in the park system on the part of our citizens, the object of the Park Commissioners in presenting this volume will be abundantly justified.

W. S. RAWLINGS,  
Superintendent.



ALL PHOTOGRAPHS IN THIS PUBLICATION,  
UNLESS OTHERWISE SPECIFIED, COPYRIGHT BY  
F. GOWEN, OFFICIAL PARK PHOTOGRAPHER

CUTS BY CLELAND & BELL ENGRAVING CO.

PRINTED BY THE SUN PUBLISHING CO., LTD.  
VANCOUVER, B. C.



