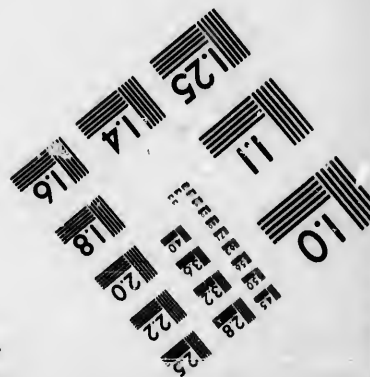
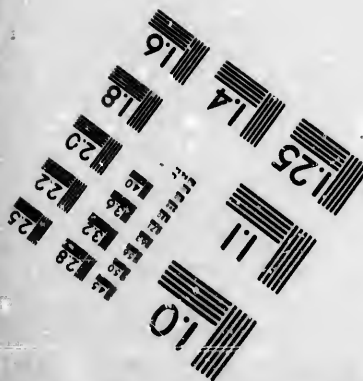
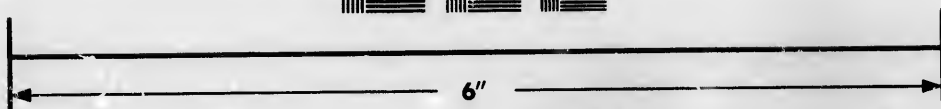
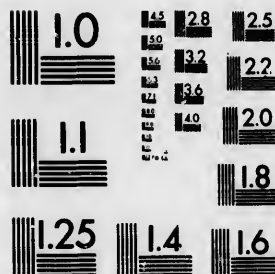


**IMAGE EVALUATION  
TEST TARGET (MT-3)**



**Photographic  
Sciences  
Corporation**

23 WEST MAIN STREET  
WEBSTER, N.Y. 14580  
(716) 872-4503

**CIHM/ICMH  
Microfiche  
Series.**

**CIHM/ICMH  
Collection de  
microfiches.**



Canadian Institute for Historical Microreproductions / Institut canadien de microreproductions historiques

**© 1986**

Technical and Bibliographic Notes/Notes techniques et bibliographiques

The Institute has attempted to obtain the best original copy available for filming. Features of this copy which may be bibliographically unique, which may alter any of the images in the reproduction, or which may significantly change the usual method of filming, are checked below.

L'Institut a microfilmé le meilleur exemplaire qu'il lui a été possible de se procurer. Les détails de cet exemplaire qui sont peut-être uniques du point de vue bibliographique, qui peuvent modifier une image reproduite, ou qui peuvent exiger une modification dans la méthode normale de filmage sont indiqués ci-dessous.

- Coloured covers/  
Couverture de couleur
- Covers damaged/  
Couverture endommagée
- Covers restored and/or laminated/  
Couverture restaurée et/ou pelliculée
- Cover title missing/  
Le titre de couverture manque
- Coloured maps/  
Cartes géographiques en couleur
- Coloured ink (i.e. other than blue or black)/  
Encre de couleur (i.e. autre que bleue ou noire)
- Coloured plates and/or illustrations/  
Planches et/ou illustrations en couleur
- Bound with other material/  
Relié avec d'autres documents
- Tight binding may cause shadows or distortion along interior margin/  
Le reliure serrée peut causer de l'ombre ou de la distorsion le long de la marge intérieure
- Blank leaves added during restoration may appear within the text. Whenever possible, these have been omitted from filming/  
Il se peut que certaines pages blanches ajoutées lors d'une restauration apparaissent dans le texte, mais, lorsque cela était possible, ces pages n'ont pas été filmées.
- Additional comments:  
Commentaires supplémentaires:

- Coloured pages/  
Pages de couleur
- Pages damaged/  
Pages endommagées
- Pages restored and/or laminated/  
Pages restaurées et/ou pelliculées
- Pages discoloured, stained or foxed/  
Pages décolorées, tachetées ou piquées
- Pages detached/  
Pages détachées
- Showthrough/  
Transparence
- Quality of print varies/  
Qualité inégale de l'impression
- Includes supplementary material/  
Comprend du matériel supplémentaire
- Only edition available/  
Seule édition disponible
- Pages wholly or partially obscured by errata slips, tissues, etc., have been refilmed to ensure the best possible image/  
Les pages totalement ou partiellement obscurcies par un feuillet d'errata, une pelure, etc., ont été filmées à nouveau de façon à obtenir la meilleure image possible.

This item is filmed at the reduction ratio checked below/  
Ce document est filmé au taux de réduction indiqué ci-dessous.

10X	14X	18X	22X	26X	30X
<input checked="" type="checkbox"/>	<input type="checkbox"/>	<input type="checkbox"/>	<input type="checkbox"/>	<input type="checkbox"/>	<input type="checkbox"/>
12X	16X	20X	24X	28X	32X

The copy filmed here has been reproduced thanks to the generosity of:

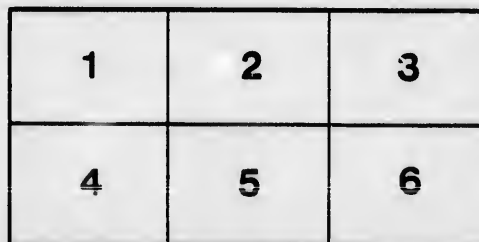
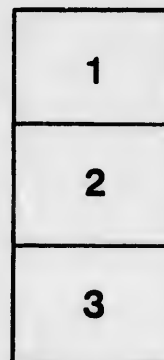
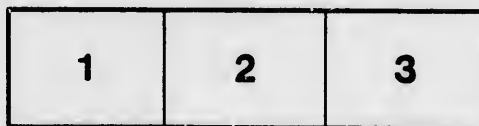
New Brunswick Museum  
Saint John

The images appearing here are the best quality possible considering the condition and legibility of the original copy and in keeping with the filming contract specifications.

Original copies in printed paper covers are filmed beginning with the front cover and ending on the last page with a printed or illustrated impression, or the back cover when appropriate. All other original copies are filmed beginning on the first page with a printed or illustrated impression, and ending on the last page with a printed or illustrated impression.

The last recorded frame on each microfiche shell contain the symbol  $\rightarrow$  (meaning "CONTINUED"), or the symbol  $\nabla$  (meaning "END"), whichever applies.

Maps, plates, charts, etc., may be filmed at different reduction ratios. Those too large to be entirely included in one exposure are filmed beginning in the upper left hand corner, left to right and top to bottom, as many frames as required. The following diagrams illustrate the method:



L'exemplaire filmé fut reproduit grâce à la générosité de:

New Brunswick Museum  
Saint John

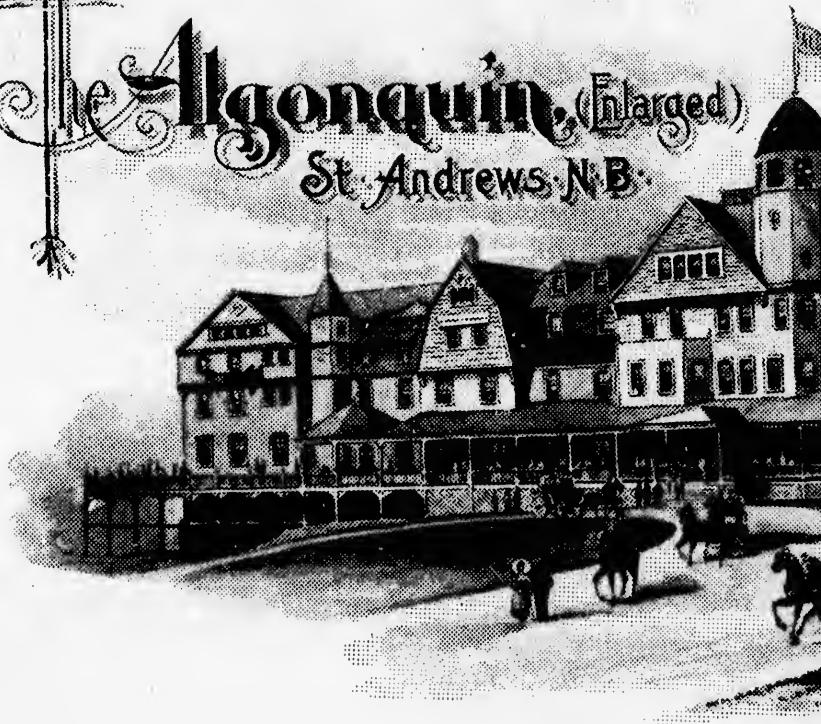
Les images suivantes ont été reproduites avec le plus grand soin, compte tenu de la condition et de la netteté de l'exemplaire filmé, et en conformité avec les conditions du contrat de filmage.

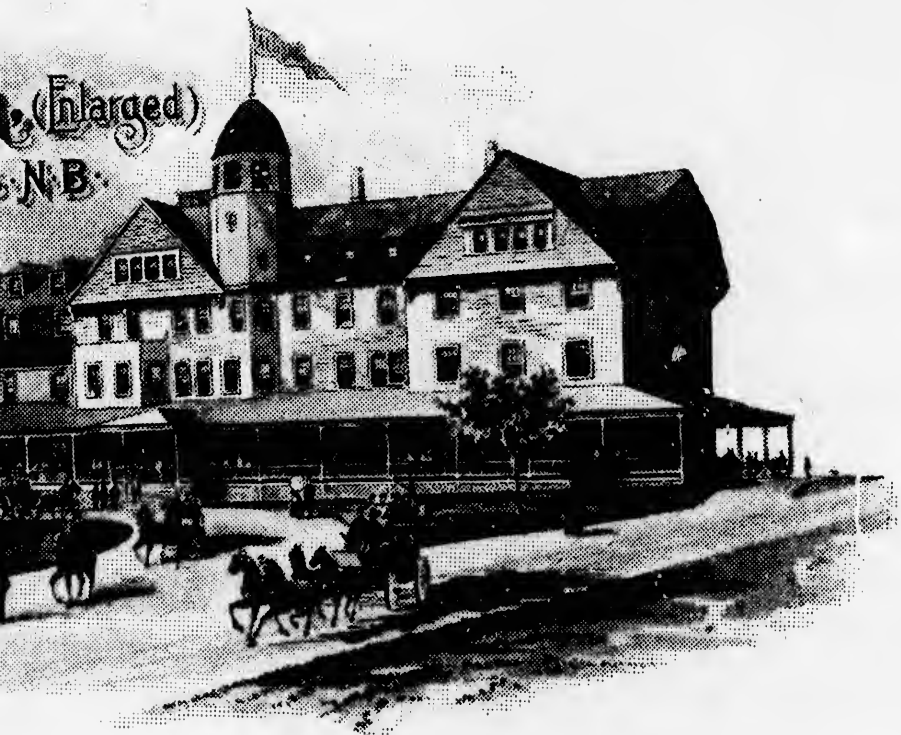
Les exemplaires originaux dont la couverture en papier est imprimée sont filmés en commençant par le premier plat et en terminant soit par la dernière page qui comporte une empreinte d'impression ou d'illustration, soit par le second plat, selon le cas. Tous les autres exemplaires originaux sont filmés en commençant par la première page qui comporte une empreinte d'impression ou d'illustration et en terminant par la dernière page qui comporte une telle empreinte.

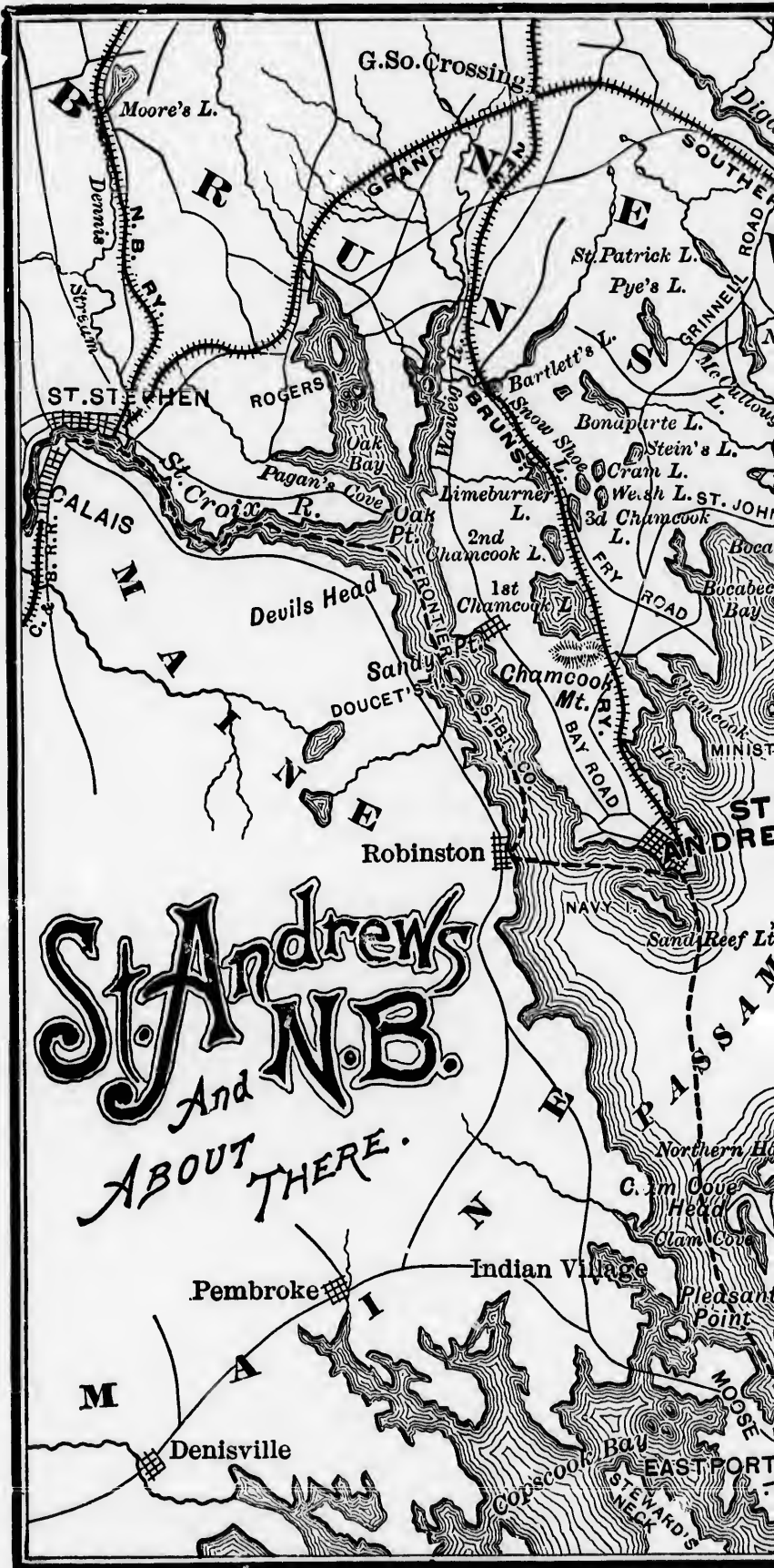
Un des symboles suivants apparaîtra sur la dernière image de chaque microfiche, selon le cas: le symbole  $\rightarrow$  signifie "A SUIVRE", le symbole  $\nabla$  signifie "FIN".

Les cartes, planches, tableaux, etc., peuvent être filmés à des taux de réduction différents. Lorsque le document est trop grand pour être reproduit en un seul cliché, il est filmé à partir de l'angle supérieur gauche, de gauche à droite, et de haut en bas, en prenant le nombre d'images nécessaire. Les diagrammes suivants illustrent la méthode.

The Algonquin (Enlarged)  
St. Andrews N.B.











Rand Avery Supply Co., Engr's, Boston.



# ST. ANDREWS IS REAC

**FROM BOSTON** By Boston & Maine R.  
daily Pullman trains; or by International  
four times per week at 5 P.M., arriving  
St. Andrews, 10 miles, is reached by St

**FROM NEW YORK** By rail and sound

**FROM THE WEST AND SOUTHWEST**

Buffalo or Niagara Falls, thence to Bos

**FROM MONTREAL AND THE NORTH**

direct trains.

**FROM QUEBEC** By Canadian Pacific

Riviere du Loup, thence by Temiscou

Algonquin coaches meet all trains and steamers upon  
is one mile from the station and from the steamboat wharves.  
Private horses and carriages may, *for the season's*  
United States free of duty, through the courtesy of the  
Excellent livery stables furnish every description of

Tilley Papers Box 33, Pkt 1, F3

# IS REACHED

---



Boston & Maine R.R. (Union Station), in 13 hours by double  
or by International Steamship Co. from Commercial Wharf  
at 5 P.M., arriving at Eastport next morning, from whence  
is reached by Steamer Rose Standish in one hour.  
By rail and sound lines to Boston.

**AND SOUTHWEST** By all lines centering at New York,  
falls, thence to Boston or Portland.

**AND THE NORTHWEST** By Canadian Pacific Ry.,

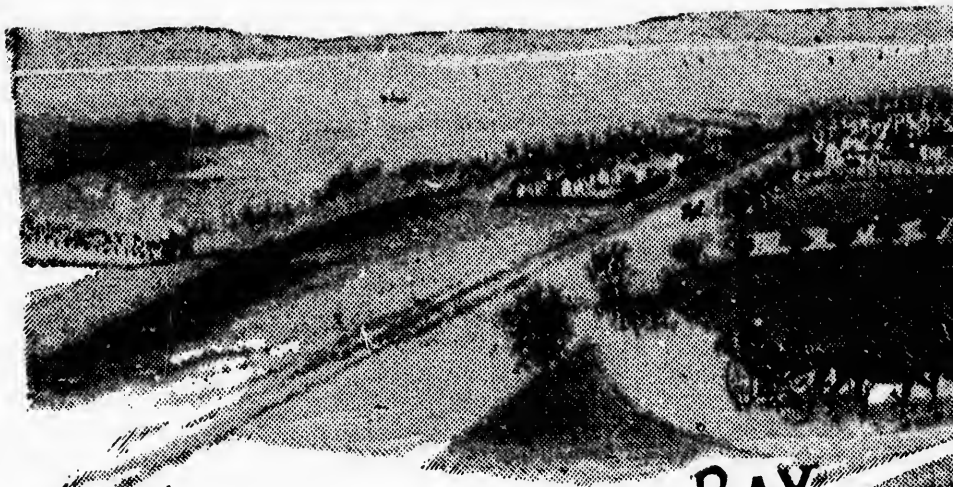
Canadian Pacific Ry. via Montreal; or by rail or steamer to  
ence by Temiscouata R.R. and Canadian Pacific Ry.

---

and steamers upon arrival at St. Andrews. The Algonquin  
the steamboat wharf.

, *for the season's use*, be taken into St. Andrews from the  
ne courtesy of the Canadian Customs.  
very description of driving and riding outfits.

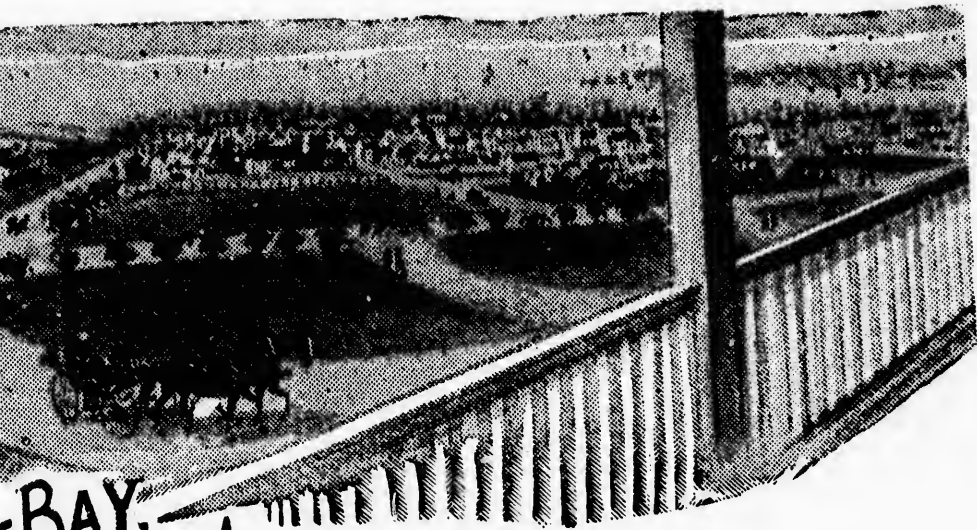
PK 1, F3 - 23



ST. ANDREWS AND THE BAY,  
FROM THE AL

NO HAY FEV

For rates, room plans and further information, ad  
Equitable Building, Boston.

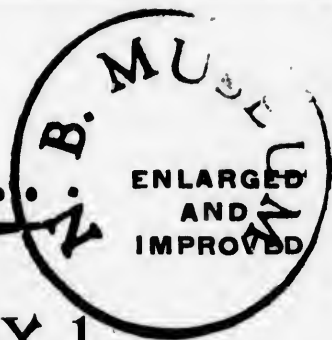


THE BAY,  
FROM THE ALGONQUIN.

NO HAY FEVER HERE.

For information, address THE ALGONQUIN, Room 39 B,

# THE ALGONQUIN . . .



**OPENS JULY 1.**

**135 ROOMS.**

. . . . .

**T**HE patronage of those who in past seasons have been unable to secure rooms is now warranted by the addition of . . .

42 guest rooms, some of which are en suite, with private baths and toilet rooms.

New Dining Room, seating 250 guests.

Amusement room, for entertainments and dancing.

Ladies' writing or sitting room, and

Amateur photographers' dark room.

---

The high reputation THE ALGONQUIN has gained by catering to the best class of people, its regular patrons, together with its elevated situation, the cool, dry climate, perfect drainage and plumbing, and pure "Algonquin Spring" water, which has no superior for kidney and kindred troubles, makes it a most attractive summer home.

---

**ACCESSORIES:** Lady Orchestra, Telegraph, Gas, Electric Bells, Steam Heat, Open Fires, Steam Elevator, Fresh and Salt Water Baths.

To save disappointment applications should be made early to

**THE ALGONQUIN,**

ROOM 39 B, EQUITABLE BLDG., BOSTON.

---

The St. Andrews Golf Club, of 40 members, will have two courses for the game.

