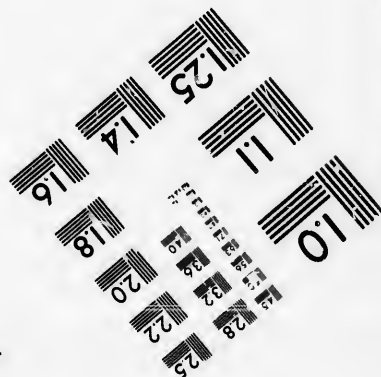
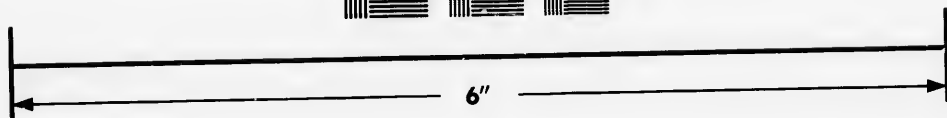
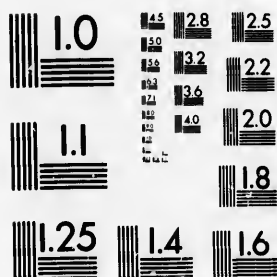


**IMAGE EVALUATION  
TEST TARGET (MT-3)**



**Photographic  
Sciences  
Corporation**

23 WEST MAIN STREET  
WEBSTER, N.Y. 14580  
(716) 872-4503

1.5  
2.0  
2.5  
3.0  
3.6  
4.0  
4.5  
5.0  
5.6  
6.3  
7.0  
8.0  
9.0  
10.0  
11.0  
12.5  
15.0  
18.0  
20.0  
22.0  
25.0  
28.0  
32.0  
36.0  
40.0  
45.0  
50.0  
56.0  
63.0  
70.0  
80.0  
90.0  
100.0

**CIHM/ICMH  
Microfiche  
Series.**

**CIHM/ICMH  
Collection de  
microfiches.**



Canadian Institute for Historical Microreproductions / Institut canadien de microreproductions historiques

1.5  
2.0  
2.5  
3.0  
3.6  
4.0  
4.5  
5.0  
5.6  
6.3  
7.0  
8.0  
9.0  
10.0  
11.0  
12.5  
15.0  
18.0  
20.0  
22.0  
25.0  
28.0  
32.0  
36.0  
40.0  
45.0  
50.0  
56.0  
63.0  
70.0  
80.0  
90.0  
100.0

**© 1985**

Technical and Bibliographic Notes/Notes techniques et bibliographiques

The institute has attempted to obtain the best original copy available for filming. Features of this copy which may be bibliographically unique, which may alter any of the images in the reproduction, or which may significantly change the usual method of filming, are checked below.

L'Institut a microfilmé le meilleur exemplaire qu'il lui a été possible de se procurer. Les détails de cet exemplaire qui sont peut-être uniques du point de vue bibliographique, qui peuvent modifier une image reproduite, ou qui peuvent exiger une modification dans la méthode normale de filmage sont indiqués ci-dessous.

- |  |  |
|--|--|
| <input type="checkbox"/> Coloured covers/<br>Couverture de couleur   | <input checked="" type="checkbox"/> Coloured pages/<br>Pages de couleur  |
| <input type="checkbox"/> Covers damaged/<br>Couverture endommagée  | <input type="checkbox"/> Pages damaged/<br>Pages endommagées   |
| <input type="checkbox"/> Covers restored and/or laminated/<br>Couverture restaurée et/ou peilculée   | <input type="checkbox"/> Pages restored and/or laminated/<br>Pages restaurées et/ou peilculées   |
| <input type="checkbox"/> Cover title missing/<br>Le titre de couverture manque   | <input checked="" type="checkbox"/> Pages discoloured, stained or foxed/<br>Pages décolorées, tachetées ou piquées   |
| <input type="checkbox"/> Coloured maps/<br>Cartes géographiques en couleur   | <input type="checkbox"/> Pages detached/<br>Pages détachées  |
| <input type="checkbox"/> Coloured ink (i.e. other than blue or black)/<br>Encre de couleur (i.e. autre que bleue ou noire)   | <input checked="" type="checkbox"/> Showthrough/<br>Transparence   |
| <input type="checkbox"/> Coloured plates and/or illustrations/<br>Planches et/ou illustrations en couleur  | <input type="checkbox"/> Quality of print varies/<br>Qualité inégale de l'impression   |
| <input type="checkbox"/> Bound with other material/<br>Relié avec d'autres documents   | <input type="checkbox"/> Includes supplementary material/<br>Comprend du matériel supplémentaire   |
| <input type="checkbox"/> Tight binding may cause shadows or distortion<br>along interior margin/<br>La reliure serrée peut causer de l'ombre ou de la<br>distorsion le long de la marge intérieure   | <input type="checkbox"/> Only edition available/<br>Seule édition disponible   |
| <input type="checkbox"/> Blank leaves added during restoration may<br>appear within the text. Whenever possible, these<br>have been omitted from filming/<br>Il se peut que certaines pages blanches ajoutées<br>lors d'une restauration apparaissent dans le texte,<br>mais, lorsque cela était possible, ces pages n'ont<br>pas été filmées. | <input type="checkbox"/> Pages wholly or partially obscured by errata<br>slips, tissues, etc., have been refilmed to<br>ensure the best possible image/<br>Les pages totalement ou partiellement<br>obscurcies par un feuillet d'errata, une pelure,<br>etc., ont été filmées à nouveau de façon à<br>obtenir la meilleure image possible. |
| <input checked="" type="checkbox"/> Additional comments:/<br>Commentaires supplémentaires:   | [Printed ephemera] 1 sheet (verso blank)   |

This item is filmed at the reduction ratio checked below/  
Ce document est filmé au taux de réduction indiqué ci-dessous.

10X	14X	18X	22X	26X	30X
<input type="checkbox"/>	<input type="checkbox"/>	<input type="checkbox"/>	<input type="checkbox"/>	<input checked="" type="checkbox"/>	<input type="checkbox"/>
12X	16X	20X	24X	28X	32X

The copy filmed here has been reproduced thanks to the generosity of:

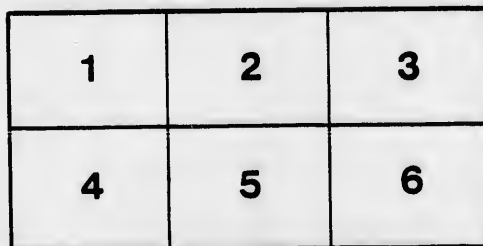
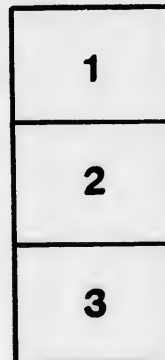
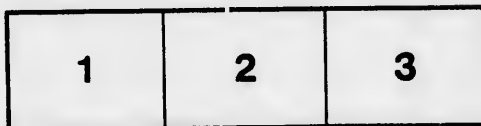
D. B. Weldon Library  
University of Western Ontario  
(Regional History Room)

The images appearing here are the best quality possible considering the condition and legibility of the original copy and in keeping with the filming contract specifications.

Original copies in printed paper covers are filmed beginning with the front cover and ending on the last page with a printed or illustrated impression, or the back cover when appropriate. All other original copies are filmed beginning on the first page with a printed or illustrated impression, and ending on the last page with a printed or illustrated impression.

The last recorded frame on each microfiche shall contain the symbol  $\rightarrow$  (meaning "CONTINUED"), or the symbol  $\nabla$  (meaning "END"), whichever applies.

Maps, plates, charts, etc., may be filmed at different reduction ratios. Those too large to be entirely included in one exposure are filmed beginning in the upper left hand corner, left to right and top to bottom, as many frames as required. The following diagrams illustrate the method:



L'exemplaire filmé fut reproduit grâce à la générosité de:

D. B. Weldon Library  
University of Western Ontario  
(Regional History Room)

Les images suivantes ont été reproduites avec le plus grand soin, compte tenu de la condition et de la netteté de l'exemplaire filmé, et en conformité avec les conditions du contrat de filmage.

Les exemplaires originaux dont la couverture en papier est imprimée sont filmés en commençant par le premier plat et en terminant soit par la dernière page qui comporte une empreinte d'impression ou d'illustration, soit par le second plat, selon le cas. Tous les autres exemplaires originaux sont filmés en commençant par la première page qui comporte une empreinte d'impression ou d'illustration et en terminant par la dernière page qui comporte une telle empreinte.

Un des symboles suivants apparaîtra sur la dernière image de chaque microfiche, selon le cas: le symbole  $\rightarrow$  signifie "A SUIVRE", le symbole  $\nabla$  signifie "FIN".

Les cartes, planches, tableaux, etc., peuvent être filmés à des taux de réduction différents. Lorsque le document est trop grand pour être reproduit en un seul cliché, il est filmé à partir de l'angle supérieur gauche, de gauche à droite, et de haut en bas, en prenant le nombre d'images nécessaire. Les diagrammes suivants illustrent la méthode.

tails  
du  
odifier  
une  
image

errata  
to

pelure,  
on à



32X

(CIRCULAR.)

COUNCIL CHAMBER,

Cobourg, January 7, 1865.

To the *Warden of Elgin County*

SIR,—

The Council of these United Counties, entertaining the opinion that injustice has been done to Upper Canada in the matter of its Municipal Loan Fund indebtedness, have determined (considering the present position of the Province as presenting a favorable opportunity) to bring the matter under the consideration of Government by a deputation appointed for that purpose.

The reasons and object of this conclusion are various, but will be obvious from two considerations: 1st, That the Deputy Auditor General has been investigating the subject, and that the result of his labours will be reported to Parliament during the coming session. 2nd, That the position assumed by Parliament relative to this question is calculated to do further injustice, from the announcement of the Finance Minister, that in the contemplated constitutional changes the Municipal Loan Fund debt is to be made a local debt; while liabilities incurred under the Seigneurial Tenure Act in Lower Canada are to be assumed by the Federal Government,—an expenditure of a purely local character.

Therefore, in accordance with the tenor of the annexed Resolution, I would respectfully request the co-operation of your Municipality, and the appointment of a deputation for the purpose indicated, so that persons so appointed shall proceed to Quebec on or about the 1st day of February ensuing.

It is also desirable that the influence of members representing either branch of the Legislature in your district be secured, and that whatever action you may take in the premises be communicated at an early day.

I have the honor to be, yours, &c., &c.,

(Signed,)

JOHN FISHER,  
Warden, U. C. N. & D.

COPY OF RESOLUTION

Passed by the Council of the U. C. of Northumberland and Durham, January 6th, 1864.

"That it is expedient to appoint a delegation either at this or next session, composed of the most experienced members of the Council to wait on the Government, and that communication be at once had with all Municipalities in Upper Canada indebted to or who may have borrowed from the M. L. F., soliciting their co-operation and the appointment of delegates for a like purpose, all to act in concert, with the view of representing the matter fully to the Ministry and Parliament, in order to the equitable and final settlement of this question."

1865

COLL.

