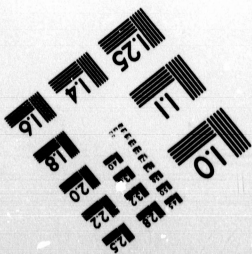
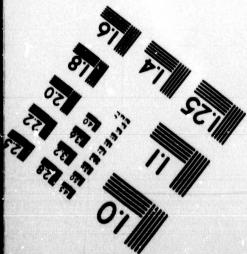
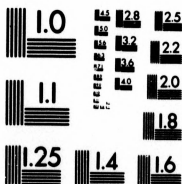


IMAGE EVALUATION
TEST TARGET (MT-3)



14
15
16
17
18
19
20
21
22
23
24
25

**CIHM/ICMH
Microfiche
Series.**

**CIHM/ICMH
Collection de
microfiches.**

10



Canadian Institute for Historical Microreproductions

Institut canadien de microreproductions historiques

1980

Technical Notes / Notes techniques

The Institute has attempted to obtain the best original copy available for filming. Physical features of this copy which may alter any of the images in the reproduction are checked below.

L'Institut a microfilmé le meilleur exemplaire qu'il lui a été possible de se procurer. Certains défauts susceptibles de nuire à la qualité de la reproduction sont notés ci-dessous.

Coloured covers/
Couvertures de couleur

Coloured pages/
Pages de couleur

Coloured maps/
Cartes géographiques en couleur

Coloured plates/
Planches en couleur

Pages discoloured, stained or foxed/
Pages décolorées, tachetées ou piquées

Show through/
Transparence

Tight binding (may cause shadows or distortion along interior margin)/
Reliure serrée (peut causer de l'ombre ou de la distortion le long de la marge intérieure)

Pages damaged/
Pages endommagées

Additional comments/
Commentaires supplémentaires

The printing is in red and blue ink.

Bibliographic Notes / Notes bibliographiques

Only edition available/
Seule édition disponible

Pagination incorrect/
Erreurs de pagination

Bound with other material/
Relié avec d'autres documents

Pages missing/
Des pages manquent

Cover title missing/
Le titre de couverture manque

Maps missing/
Des cartes géographiques manquent

Plates missing/
Des planches manquent

Additional comments/
Commentaires supplémentaires

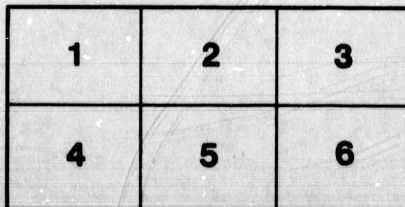
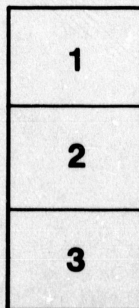
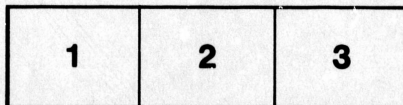
The images appearing here are the best quality possible considering the condition and legibility of the original copy and in keeping with the filming contract specifications.

The last recorded frame on each microfiche shall contain the symbol \rightarrow (meaning "CONTINUED"), or the symbol ∇ (meaning "END"), whichever applies.

The original copy was borrowed from, and filmed with, the kind consent of the following institution:

National Library of Canada

Maps or plates too large to be entirely included in one exposure are filmed beginning in the upper left hand corner, left to right and top to bottom, as many frames as required. The following diagrams illustrate the method:



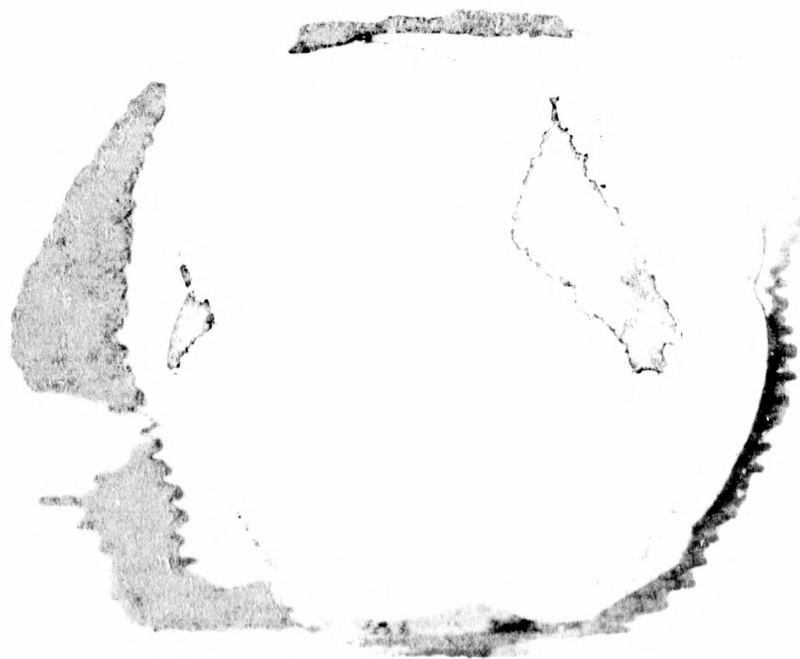
Les images suivantes ont été reproduites avec le plus grand soin, compte tenu de la condition et de la netteté de l'exemplaire filmé, et en conformité avec les conditions du contrat de filmage.

Un des symboles suivants apparaîtra sur la dernière image de chaque microfiche, selon le cas: le symbole \rightarrow signifie "A SUIVRE", le symbole ∇ signifie "FIN".

L'exemplaire filmé fut reproduit grâce à la générosité de l'établissement prêteur suivant :

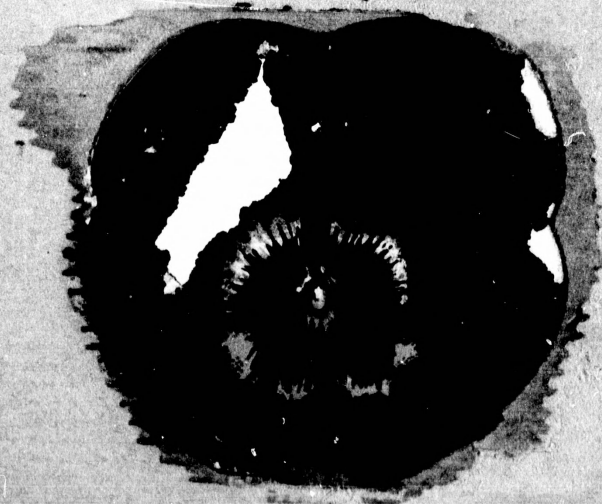
Bibliothèque nationale du Canada

Les cartes ou les planches trop grandes pour être reproduites en un seul cliché sont filmées à partir de l'angle supérieure gauche, de gauche à droite et de haut en bas, en prenant le nombre d'images nécessaire. Le diagramme suivant illustre la méthode :



A Prayer for Guidance

PSALM V., 8



BY

• Miss • Bella • Clarke •



A PRAYER ::
FOR
- GUIDANCE

Entered according to the Act of the Parliament
of Canada, in the year one thousand eight hundred
and eighty-eight, by Archer G. Watson, Manager
Toronto Willard Tract Depository, in the Office of
the Minister of Agriculture at Ottawa.

A PRAYER



-- FOR --





GUIDANCE



By MISS BELLA CLARKE

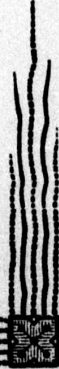



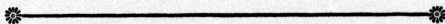
ARCHER G. WATSON, MANAGER
TORONTO WILLARD TRACT DEPOSITORY
COR. YONGE AND TEMPERANCE STREETS, TORONTO



LEAD me, O LORD, in thy
righteousness because
of mine enemies; make thy
way straight before my face.

PSALM V., 8.

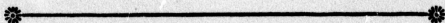




“MAKE Thy way straight before my face” O
Lord,

For I am weak, and apt to go astray ;
And wander in self-chosen dangerous paths ;
And so I ask Thee, lead me day by day.

“ Make Thy way straight before my face ” O Lord,
For I would place my hands in thine to hold ;
And trust Thee ever to mark out the way
That leads me upward to Thine heavenly
fold.

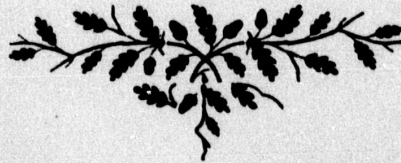


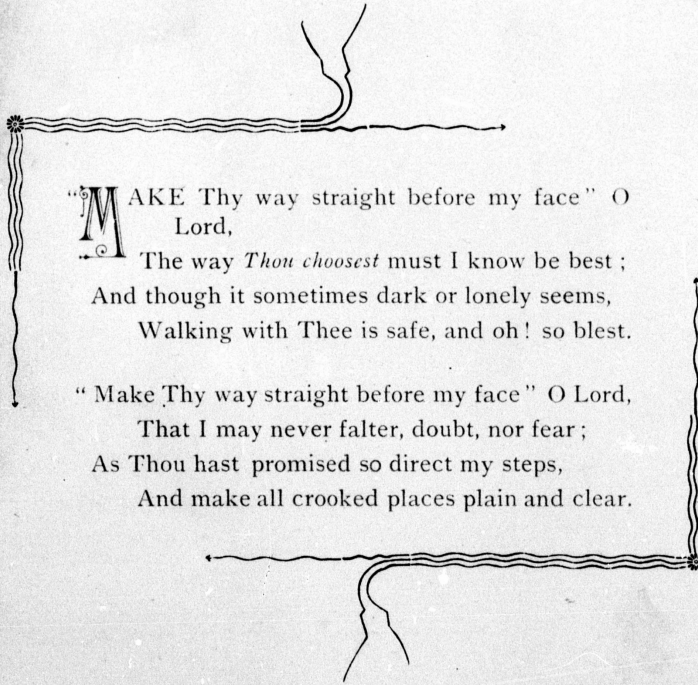


I will go before thee, and make
the crooked places straight; I will
break in pieces the gates of brass,
and cut in sunder the bars of iron;

And I will give thee treasures of
darkness, and hidden riches of secret
places.

ISAIAH XLV., 2-3.

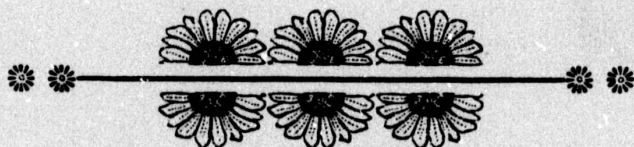




“MAKE Thy way straight before my face” O
Lord,

The way *Thou choolest* must I know be best ;
And though it sometimes dark or lonely seems,
Walking with Thee is safe, and oh! so blest.

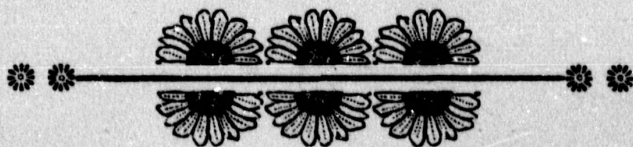
“ Make Thy way straight before my face ” O Lord,
That I may never falter, doubt, nor fear ;
As Thou hast promised so direct my steps,
And make all crooked places plain and clear.



HE made his own people to
go forth like sheep, and
guided them in the wilderness
like a flock.

And he led them on safely,
so that they feared not.

PSALM LXXVIII., 52-53.





“MAKE Thy way straight before my face” O
Lord,
Thy way, not *mine*, oh may I ever tread ;
And like Thy people Israel of old,
All through the wilderness be safely led.

Until at last I reach the “Promised Land,”
The Heavenly Canaan, oh! so bright and
blest ;
There see Thee, Lord and Master as Thou art,
And in Thy presence find eternal rest.

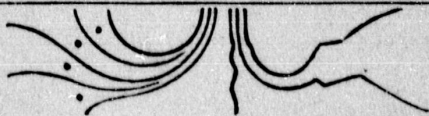
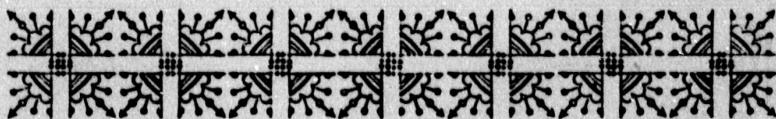


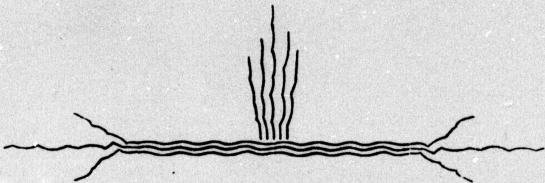


THOU shalt guide me with
thy counsel, and after-
ward receive me to glory.



PSALM LXXIII., 24.

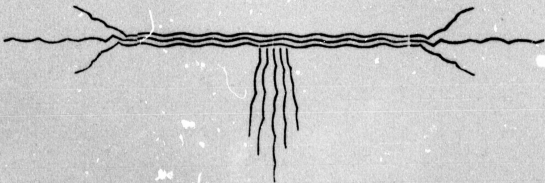




AND then in the full sunshine of Thy smile,
I'll trace the pathway that while here I
trod ;

And see that *all was well*, through sun and
storm,

It led me safely home to dwell with God.





And the LORD shall guide thee
continually, and satisfy thy soul in
drought, and make fat thy bones;
and thou shalt be like a watered gar-
den, and like a spring of water, whose
waters fail not.

ISAIAH LVIII., 11.



