

THE COMMERCIAL

FINANCE AND INSURANCE REPORT

Subscription, \$2.00 per Annum in Advance.

Established 1882.

Published Weekly.

Vol. 20

WINNIPEG, CANADA, APRIL 12, 1902

No. 32

As We Have

Pumps Good Pumps

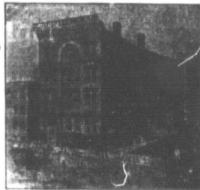
ANDON . .

Pump Pumps
Double Acting Force Pumps
Rocks Pumps
Sphular Well Stand Pumps
Wrought Iron Set Length Pumps
Safari Force Pumps
Highon Clsters Pumps
Close Top Pitcher Pumps.

Equipped with seamless drawn brass cylinders, glass valve seats.
We have the latest and most improved pumps on the market. Write for our catalogue and prices if you want to save the best.

Herrick, Anderson & Co.
WINNIPEG, MAN.

CODVILLE & CO.
Wholesale Grocers.



—Packers of—

CELEBRATED GOLD STANDARD TEAS
Coffee, Baking Powder and Spices.

BANNATYNE AVE. E., WINNIPEG.
Branches: BRANDON and CALGARY.

IT IS IMPORTANT TO HAVE YOUR STOCK COMPLETE IN

CHILDREN'S SHOES

We have them.



Immediate orders shipped same day as received.

THE AMES HOLDEN CO.
Boots and Shoes, Granby Rubbers
WINNIPEG.

There's a Big
Run on our

LACE CURTAINS

Have you seen them?
The new and rich designs in the better qualities must be seen to be appreciated. THEY ARE IRRESISTIBLE.

Swiss Net Curtains

With heavy applique work on fine net; regular length and width. Prices from \$2.85 to \$9.00.

Nottingham Lace Curtains

In many pleasing designs, suitable for any house. From 50c to \$4.50.

Curtain Nets

In Swiss and Nottingham Lace.

Table Covers

Sizes, 4-4, 6-4, 8-4, 10-4, 12-4.
The majority of your customers want 1 or 2 pairs of curtains this spring. Better have a few lines on hand. Your order for same can be shipped express or freight same day as received.
WRITE

R. J. Whitla & Co.

LIMITED

IMPORTERS AND MANUFACTURERS
WINNIPEG.

GENUINE VEGETABLE PARCHMENT

BUTTER PAPER

In Stock—8x12
12x18
18x24
24x36

We do not handle imitations.

McALLISTER & WATTS

43 Rorie St., Winnipeg.

WINNIPEG Business College

Cor. Portage Ave. and Fort St.

PREPARE

For the active duties of a business life by taking a course at the Winnipeg Business College. Annual catalogue sent free to any address.

G. W. DONALD, Secretary.

BROMLEY & CO.



Tents
Awning and
Mattress
Factory

Cor. Princess and Alexander St., Winnipeg

TOPs, Skipping Ropes, Rubber Balls, Marbles, Cloth Brushes, Whisks, Brooms, Pipes, Alarm Clocks, Jewellery, Cutlery and a full assortment of Smallwares.

WHOLESALE ONLY.

J. McLEOD HOLIDAY
173 McDermot Ave. Winnipeg.
Direct exporter of SENECA ROOT. Write for quotations.

F
R
U
I
T
S



P
R
O
D
U
C
E

Our Smallware Department

Has passed into stock a shipment of Ladies' Belts and Ladies' Neckwear—the very latest styles and in all leading shades. Nothing more dainty in Neckwear has ever been shown in the west. To retail from 50c to \$1.00.

We have Belts in Leather (black or colors), Velvet, Silk and Beaded Elastic, to retail from 50c to \$1.00. We have also received another delivery of Hair Goods, consisting of Side Combs, Pompadour Combs, Back Combs, Hair Slides, etc.

Now is the time to sort up your stock with these goods. Send us your letter orders. They will receive prompt and careful attention.

The Gault Bros. Co. Ltd.

IMPORTERS and MANUFACTURERS
WINNIPEG

Thomas Ryan & Co. Ltd.

We are carrying an immense stock of

BOOTS AND SHOES

For the Spring and Summer trade. Our motto is good stock and close prices. Orders respectfully solicited.

THOMAS RYAN & CO. Ltd.
King and Bannatyne Sts., Winnipeg

Hudson's Bay Co'y



TENTS, FLAGS AND
ROLLER AWNINGS

**THE EMERSON-HAGUE
MANUFACTURING CO. Ltd.**
WINNIPEG.

Important to Country Merchants

WE cannot too strongly advise our customers in country that it is in their interest to use only Tubs (either wire or wooden hoop) in shipping their Dairy Butter to market; and farmers should be asked to put up their Butter in tubs only. In the course of a year, we get a large quantity of Dairy Butter put up in boxes and Butter put up in this way, in most cases, has to be sold at a reduced price, on account of boxes breaking easily and separating at corners. The air gets in at butter and, to a large extent, destroys the flavor and, in many ways, injures the quality. The expense is large in putting these packages in proper shipping shape to go on the market. Butter boxes were made to put up Creamery Butter only and not intended for Dairy Butter.

J. Y. GRIFFIN & CO.

WHOLESALE COMMISSION MERCHANTS AND PORK PACKERS

WINNIPEG

NEW MADE MAPLE SYRUP

On Thursday next, 10th inst., we will take delivery of a straight car of genuine New Maple Syrup, which we offer subject to being unsold on hearing from you, at following prices:

8-lb. tins; 10 tins to case, 80 lbs. net	\$7.50 per case
5 Gallon tins, 1 tin to case, 62 lbs. net	5.50 "
15 " " bbls. weighing 200 lbs. net	50½ per lb.

This syrup is coming to us from one of the largest and choicest syrup districts in Quebec, and should be the first car of pure syrup to reach Winnipeg. At these figures you are getting genuine maple syrup at price of imitation.

R. A. ROGERS & COMPANY Ltd.

WINNIPEG

APRIL 8, 1902

SHINGLE STAINS

Have you ever used them?

CREOSOTE SHINGLE STAINS

ALL SHADES

MANUFACTURED BY

G. F. STEPHENS & CO., Ltd.

WINNIPEG, MANITOBA.

The W. H. Malkin Co.
LIMITED.

Importers and
Wholesale Grocers

Packers of the Celebrated
VICTORIA CROSS Evaporated
Fruits, Teas and Coffees.

HEADQUARTERS for Sago, Tapioca,
Rice and all classes of English
Groceries.

Prompt attention to all letter orders.

137 Water St., - VANCOUVER, B.C.

Railway Commission.

Mr. Blair, on Wednesday, introduced his bill to provide for the appointment in Canada of a railway commission and to amend and consolidate into one statute, for the guidance of the commission, the various amendments made to the General Railway Act since its passage by parliament in 1888.

The bill, Mr. Blair says, provides that the decisions of the commissions should be final, subject only to the approval of the government-in-council. If the commission was composed of the right men it might be more competent to deal with questions of fact in railway matters than any court of law, therefore its decisions would not be subject to revision in the bench. In the United States it took about four years of litigation to get a final judgment of railway disputes. By the absence of appeal this condition would be avoided in the Dominion. Under the present law the government-in-council fixes maxima and minima rates for railway companies and any variation between these limits was permissible. Under this Act another scheme was provided.

It was proposed to divide traffic into three classes—ordinary traffic, commodity traffic and competitive traffic. The commission would have power to fix rates for the first and, say that these alone should be put ordinary freight, would not be subject to freight not specifically included in the other two classes. The commission would have power to take certain class of freight out of the ordinary and transfer it to the commodity class as they saw fit. The commission would fix merely maxima and minima rates for this commodity class between which the companies would have authority to fix their rates. The commodity class was one well known in railway matters. When a railway company fixes its charge the law would compel it to make this public to the latest extent. Railways could not be held to a fixed rate when face to face with competition, therefore, on competitive business, no hard and fast rates would be laid. The commission would have it in its power to set such rates should be levied for competitive freight. But as competition was not to meet, often from steamship, as well as railway companies, the railways would be allowed to fix their own rates, and then submit these to the board for approval, in order that traffic be not blocked by the companies being forced to wait on the announcement of the commission's ruling in regard to new tolls. The commission was to be notified of changes in competitive rates whenever they were made, and in the event of their approval, they would hold such conditions called for alteration. The government had no desire to hamper the railways in the handling of their business. The public must be kept informed of railway rates, and when this is not done, the commission has power to enact penalties.

At present railway companies submit their proposed rates to the government-in-council. Under the new Act the power of sanction is transferred from the government-in-council to the commission. The government had thought earnestly over the question of the long and short haul, and found it one hard to solve. It was a matter left to the commission to deal with each case as it arises, say that railways are forbidden to impose a higher rate for shorter distances than for long distances when the former is included in the latter. This would apply in all cases excepting where the government-in-council, in special circumstances are most exceptional when justice must be done.

In reply to a question from the Opposition side, the minister made it clear that the commission would have power to control not railway traffic alone, but traffic by lakes, rivers and canals as well. He hoped to move the second reading at an early day.

A tramp rang the doorbell of Dr. Mary Morrison's house the other day and when a pleasant-looking woman came to the door he asked her if she would be so kind as to ask the doctor if he had an old pair of trousers to give to a needy man.

"I'm the doctor," said the smiling woman.

THE COMMERCIAL

The recognized authority on all matters pertaining to trade and progress in Western Canada, including that part of Ontario west of Lake Superior, the province of Manitoba and the Territories.

Twentieth Year of Publication.

ISSUED EVERY SATURDAY.

Subscriptions—Canada and the United States, \$2.00 per annum in advance, or \$2.50 per copy; foreign countries \$3.00 in advance.

Changes for advertisements or stops should be in not later than Thursday morning on which profession to express the opinion of this journal, will not be inserted.

The Commercial certainly enjoys a very much larger circulation among the business community of the vast region lying between Lake Superior and the Pacific coast than any other paper in Canada daily or weekly. The Commercial also reaches the leading wholesale, commission and manufacturing concerns of Eastern Canada.

Office: 212 McDermott St. Telephone 214.
D. W. BUCHANAN,
Publisher.

WINNIPEG, APRIL 12, 1902.

FINANCIAL

WINNIPEG BANK CLEARINGS.

Returns for the Winnipeg Clearing House for the week ending Thursday, March 27, as follows:

Week ending April 10, 1902 \$2,600,367
Corresponding week, 1901 1,700,267
Corresponding week, 1900 1,531,866

Financial Notes.

H. B. Shaw, manager of the Union Bank of Canada, Assn., is to be transferred to Winnipeg, according to local report, and will be succeeded by H. J. Gault, at present manager at Verdun, Man.

The boom in Dominion Coal and Dominion Steel Stocks which has increased the value of the coal shares from \$3,250,000 to \$21,000,000, and the value of steel from \$3,000,000 to \$8,500,000, is the most notable movements in the history of the Montreal Stock Exchange.

The Union Bank has just entered into occupation of a handsome new banking building at Carberry, Man., and its branch there is now as comfortably housed as the most fastidious manager could wish. The new building cost \$25,000. It is four stories in height and in addition to the bank quarters has offices up-stairs and dwelling apartments.

A Halifax dispatch says: Canadian banks are invading West India territory in view of the expected large increase in the value of the Dominion with those islands. The Bank of Nova Scotia, which was the first in the field, has branches at Hamilton, Demerara and Havana, and it is reported that it will also establish an agency in Trinidad, probably in the near future. Mr. Bio, the Inspector of the Union Bank of Halifax who has just returned from a tour made to the islands, reports on trade conditions, that the directors have decided to open a branch at Port of Spain forthwith.

Insurance Notes.

The number of joint stock companies carrying on fire insurance business in Canada last year, 28, of which 15 were Canadian, 21 British and 8 foreign. The amount of money received by these companies in the form of premiums was \$11,580,453, re-imbursed policies to the amount of \$1,049,243. The net amount of fire loss was \$6,776,586, or 70.06 of the income. As the cost of management and expenses amounted to 6 or 28.15 per cent. in the case of the British companies to 32.16 per cent. in the case of the Canadian companies there was no money in the business for the shareholders. Fourteen companies only had any surplus, and these dividends to their stockholders and the highest of these dividends was only 4.5 per cent.

Railway and Shipping Notes.

The Ottawa Western and Northern Railway has virtually been sold to the Canadian Pacific Railway.

Rates of freight from Duluth and Fort William are quoted at 6 1/2c per bushel through to Montreal.

It is announced from Gladstone that McMillan Brothers have been awarded contracts for constructing the Canadian Northern extension from Heaver to Neepawa.

G. H. Stravel, who has secured the contract for building the first 100 miles of the Canadian Northern Railway Gilbert Plains extension, will begin work within a few days.

A trainload of silk and chinamen, part of the load of one of the Empress liners, which arrived at Vancouver last week, passed through Winnipeg on Saturday, the 5th, bound for New York. The silk was contained in eight cars, and was valued at \$6,000,000.

A report is in circulation to the effect that there is trouble pending between the Canadian Northern Railway Company and its trackmen. The difficulty is said to lie in the present scale of wages and of employment, and is complicated with a refusal on the part of the officials to properly recognize the trackmen's committee.

More than 4,000,000 tons of vessel tonnage are being chartered by mining and

Tenders for the construction of a court house building at Yorkton, Assn., will be received up to April 15 by the public works department, Ottawa. Plans at post office, Yorkton.

Tenders will be called by the Winnipeg school board for supplying anthracite coal to the several school buildings for use in the stack heaters, estimated quantity, 30 tons.

Tenders will be received up to noon of Wednesday, the 23rd day of April, 1902, for the properties belonging to the estate of the late R. W. Jamieson, of Winnipeg, by the National Trust Co.

Tenders for the printing, lithographing, bookbinding and advertising required by the city of Winnipeg during the year ending April 30, 1903, will be received up to 3:30 p. m. on Friday, April 18.

Tenders will be received for the construction of a two-story solid brick house on Henry street, Winnipeg to April 15. Plans and specifications may be seen at F. Finkelstein's, 157 Rupert street.

Sealed tenders addressed to the chairman of the board of works, Winnipeg, for the supply of lumber, hardware, oils, dynamite and other supplies, will be received up to 8:30 p. m., on Thursday, April 17, 1902.

Tenders for furnishing the drugs and other medical supplies which will be required by the health department

MINING

British Columbia.

The total ore shipments of Sandon mines last week amounted to 122 tons.

An English company will dredge for gold on the North Thompson river a few miles from Kamloops this year.

It is being openly stated that James J. Hill has secured a large interest in the stock of the Granby Smelting Company.

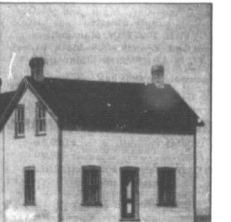
The Granby Smelting Company will probably increase the capacity of its smelter to 2,000 tons per day. Its present capacity is 1,200.

A new ore strike has been made in the Barber-Cariboo mine, Saulton district. The vein is 4 1/2 feet wide and the samples taken assayed 750 ounces to the ton.

Northwestern Ontario.

The surplus of the Black 234th mine, Rat Portage district, for the month of March was \$4,000. This mine is now on a paying basis. It is perhaps best known as the Assiniboia mine.

The Wendigo mine, Lake of the Woods, which was closed down over a year ago through a disagreement among the company managers, and



Western Farm Homes—Residence of S. A. McDougall, Coteau, Assiniboia.

steel making interests outside of the United States Steel Corporation. The latter has room for about twice as much as that in its own ships, and will be obliged to charter ships to carry about 4,000,000 tons more. It is estimated that about all the ore that will be moved down the lakes this year has been sold. These sales mean, what are added to them, the amount of ore reserved by mining and steel-making combinations, a gross purchase exceeding \$71,000,000. This is about the value of the estimated output of this year from Lake Superior mines which delivered on Lake Erie docks. Of this sum about \$3,000,000 will be sold to shipping concerns for freight.—Port Arthur Herald.

Tenders.

Tenders are called to April 15, for \$7,200 debentures of the municipality of North Cypress, Man., to John A. Davidson, provincial treasurer, Winnipeg.

Tenders will be received by Architect Browne, Winnipeg, until noon on Monday, 21st April, for the erection of two detached residences on Wardlaw Avenue.

Tenders for the supply of 40 Summerfield Cans for the erection of the Winnipeg fire department will be received up to 8:30 p. m., on Monday, April 14.

Tenders will be received for necessary apparatus and supplies for the new fire alarm system, to be installed in Winnipeg, by the city. Tenders close at 3 p. m., April 18.

Tenders are called for a hospital building to be erected in connection with the immigration buildings, Winnipeg, to be in by April 14. Plans at public works office, Winnipeg.

of the city of Winnipeg for the year ending April 30, 1903, will be received up to 8:30 p. m. on Tuesday, April 15.

Tenders for the supply of one eight circuit fire alarm switchboard, storage batteries, pen registers, 10 miles No. 9 bare galvanized iron wire and 2,000 double petticoat glass insulators will be received up to 3 p. m. on Friday, April 18, by the Winnipeg city council.

Tenders for Indian supplies will be received up to noon on Monday, 14th April, for the delivery of Indian supplies during the fiscal year ending 30th June, 1902, at various points in Manitoba and the Northwest Territories. Particulars from Indian Commissioner, Winnipeg.

Tenders, addressed to the Chairman of the Fire, Water and Light Committee, Winnipeg, for the supply of from 3,000 to 5,000 tons of steam coal, will be received up to 3 p. m. on Thursday, April 17, 1902. The coal is to be delivered in quantities and at times as required. Full care at the watersworks pumping station.

The probable number of settlers who will arrive in Western Canada from the United States this year is placed by the Dominion immigration commissioner at 36,000. This is about double the number who came in last year. The estimate is a very reasonable one and should be given credence in preference to the decidedly fanciful one of the many millions of agriculture for the Northwest Territories, who is quoted as saying that fully 200,000 immigrants will arrive in that portion of the west alone. There is a tendency both east and west to exaggerate and boom the present immigration movement and this should be deprecated by all responsible persons.

which was subsequently taken over by the creditors of the old company, has been sold to a syndicate of Buffalo capitalists.

Miscellaneous.

The mines of the Criddle Creek district produced \$2,074,000 during the month of March. This amount of bullion was extracted from 53,300 tons of ore, of which the smelters treated 15,340 tons and the chlorination mill 20,800 tons. Since the first of this year this camp has produced \$6,250,000 in gold.

British Live Stock Markets.

London, April 7.—Owing to short supplies and a good demand is reported to the market was strong for cattle, and prices show an advance of 1/2c to 1c per pound since this 13th of the American cattle sold at 37 1/2c to 14 1/2c, and sheep and lambs at 14c to 15c.

A private cable from Liverpool quoted choice Canadian cattle at 13 1/2c, and one from London quoted them at 14c.

Another cable from Liverpool quoted choice Canadian cattle at 13 1/2c, and one from London quoted them at 14c to 14 1/2c.

A cable from London reported 3 1/2c of American steers at 14 1/2 to 15c.

Scrap rubber declined 1/2c per pound at Toronto last week.

Navel oranges advanced 25c per box in California last week as a result of the very heavy demand. As this kind of oranges are now becoming scarce, seedlings and sweets are in better demand and are also higher in price.

WINNEPEG BOARD OF TRADE.

A meeting of the board of trade was held Tuesday afternoon when a number of important questions were discussed. President John Russell, in calling the meeting to order, outlined the business transacted by the council in the interval since the last meeting of the board, and a presentation of reports from the council.

The first report considered was that of a committee on the matter of the Intercolonial railway; it was as follows:

"The Winnipeg board of trade concurs in the view that the Intercolonial is not a satisfactory factor in the transportation system of the country. And recommends that a thoroughly qualified expert in the management of railways be appointed to make a report on existing conditions and what is its estimation would make the Intercolonial a paying concern and of the greatest benefit to the country, and also to study and make recommendations on the following alternative scheme for the consideration of the board:

1. As to how the Intercolonial could be extended so as to make it a real factor in competitive traffic affecting the greatest bulk of Canadian traffic.

2. That revision of traffic agreements the government might make under the present conditions, by virtue of its special powers, which would tend towards the same end as the above.

3. What arrangement for the granting to other railways of running right, management or other powers over the Intercolonial would be desirable and calculated to benefit general transportation, or what running rights over the Intercolonial should be acquired by the Intercolonial to accomplish the same purpose.

Mr. E. L. Drewry moved the adoption of the report, seconded by Mr. H. M. Belcher.

Mr. Macdonald thought the report did not go quite far enough. He suggested an amendment, which he afterwards moved. Mr. H. L. Richardson seconded, and which the committee declined to incorporate it in the report as follows:

"That the expert be asked to give the estimate cost of the road, the actual cost, the loss or gain since the road was constructed, the freight and passenger rates, the volume of business done, passengers and freight carried, the number of passes issued and cost of management."

The amendment was lost after a long discussion, the majority of the members holding that the report was sufficiently comprehensive to include all that was asked for in the amendment, while the mover and seconder considered that information on all the points referred to in the amendment was needed, and might not be given unless the request went into the details.

The report was adopted.

Tariff Resolutions.

A tariff resolution forwarded by the Board of Trade and referred to the council, asked that the government revise the present tariff with a view to the present conditions of the market against unfair competition. The board's report advised that no action be taken and it was adopted by the council.

On recommendation of the council the board recommended the continuance of the sub-committee in connection with the London Congress of chambers of commerce.

Resolutions from the Toronto and Montreal boards of trade, also from the board of trade of the town of St. John and the British Empire League in Canada were reported on by the council, which recommended the adoption of the two former and the taking of no action on the line of the two latter. The resolutions of the Toronto and Montreal boards were to the effect that it would be to the interest of the empire that any changes in the fiscal policy of Great Britain ought to provide for preferential duties in favor of colonial products. One of the resolutions proposed that the trade policy of the provinces be reconstructed on the basis of free trade with the British Empire and the British Empire League advocated a

on all foreign goods. The report of the council was adopted.

Ship Building.

Correspondence was read asking the board to pass a resolution urging that the Federal government give sufficient aid to the Canadian ship building industry to enable this country to compete with the other countries. A review of the ship building trade in Canada was given and its importance to the country in securing investment of capital, and in providing employment for large numbers of men was shown. Messrs. G. R. Crowe and A. M. Nanton spoke in support of a resolution that in the opinion of the board, the government should encourage the building of modern steel ships in Canada by passing a measure granting assistance sufficient to place the builders on an equality with their chief competitors, such aid to extend over a term of years. The hope was expressed that such a measure would be passed during the present session. Mr. Crowe made reference to the position of Canada as the third or the fifth nation in ship building twenty-five years ago. He pointed out that the bulk of wood, and to the change which had occurred through the use of steel and steam.

Mr. Nanton pointed out that we have in Canada material to make steel ships which are produced favorably with any in the world.

Mr. A. Macdonald objected that the bulk of our steel and iron industries, besides other bonuses, that every acre of land has been given away, besides

the support of the navy, that the colonies should contribute thereto, and that the first step taken should be the establishment of naval reserves in the colonies. The communication was filed, as the time was not considered opportune.

The Nelson board of trade, in the interest of the lead, manufacturer, asked approval of an increase of duty on "pig lead" imported from England, to 25 per cent. This was referred to the council for action.

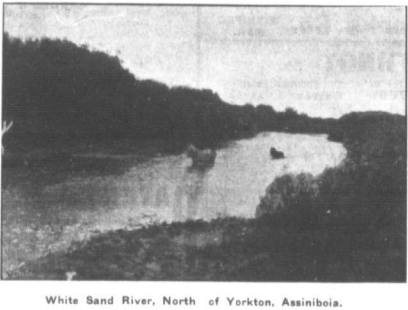
The Halifax board of trade wrote regarding the customs tariff, asking co-operation in favor of applying the preferential tariff only to goods imported directly through Canadian ports.

On motion of Mr. Whitt, the board declined to take action, as desired. The Montreal board of trade wrote that to C. P. R. had included that city in its excursion arrangements, giving tickets for \$61.55, good to October 31, and granting stop-over privilege.

Japanese Exhibition.

A circular was received from the Japanese government, announcing that a national industrial exhibition would be held in Osaka, Japan, in 1903, and inviting Canada to send exhibits, as this would provide a rare opportunity of exploiting the rapidly-developing markets of the far east. The exhibition was sure to attract besides millions of Japanese, large crowds of visitors from the continental countries of Asia.

Mr. Arthur Congdon was elected, by ballot, a member of the board.



White Sand River, North of Yorkton, Assiniboia.

Canadian Northern Extension.

Ottawa, April 8.—The railway committee this morning took up the consideration of a bill, which was practically the granting of a charter for trans-continental railway to the Canadian Northern Railway Co. The company asked power to build a number of lines and branches which would stretch from the St. Lawrence ports to the Pacific coast.

Mr. Z. C. McCreary, Toronto, appeared for the company, and pointed out what they desired on a large map. "The first line was from a point on the company's existing line which has grown to a mileage of 1,300 to five miles west of Port Arthur and Port Frances, easterly to Quebec, with branch lines dropping down to Ottawa and Montreal."

The second line is from McCreary, Man., to the southern boundary of the province, the object being to bring the lumber of the northern districts to the southern parts of Manitoba by a direct line.

The third piece of line for which authority is asked, is from the north-western terminus of the line to Edmonton, then to the coast near Skeena river, by way of Pine River Pass, Power is also asked for a branch from near Swan River to a point between Edmonton and the Yellowknife Pass, and for a branch from Alberta on the Saskatchewan to the Red Deer river, the object of this latter being to relieve the coal fields.

Running northerly, a sixth line is projected, from a point on the main line at Humber, to the coast, to a point at or near the mouth of the Carrot river, near Pas Misson. The first line is to be commenced within

five years, and completed within ten years; the others to be commenced within two years, and completed within five years.

Power is also sought to increase the company's capital from \$24,700,000 to \$35,000,000. The mileage for which permission is now asked is about 2,500. Mr. Lash laid emphasis on the fact that this was not an attempt to get a charter to sell, but was a live project.

The minister of railways said that he did not think, so far as the principle of the bill was concerned, that there was anything he was called upon to remark particularly. However, he might say that the company looked with entire favor and approval upon the construction of a second trans-continental railway to the Pacific coast, and anything they could do or ask parliament to do to aid in the promotion of that undertaking, they proposed to do. There were subsidiary matters which invited more critical consideration. He did not feel at this juncture, like putting any one trans-continental line in unlimited possession of such a large part of the country as the Canadian Northern Railway would have, with two parallel lines across the prairie, any more than which parliament might fifty be asked grant, but that the government should look into the duplication of proposed lines, and be another matter.

In deference to the wish of the committee Mr. Lash amended the bill so as to define the route and the points of construction. In view of Mr. Blair's objection withdrawing the clause empowering the construction of the line without a parliamentary Pass, thus leaving one trans-continental line authorized.

The clause dealing with the increase of capital was left over. The minister of railways thought the amount should be increased in proportion to the amount of the new work which the bill actually authorized. Otherwise the bill was passed by the committee.

Term Defined.

A special general meeting of the grain exchange was held Monday. The following resolution was adopted by-law No. 18 regarding trade terms, was carried unanimously:

"On contracts for grain sold for shipment on the 'open navigation', the seller shall have ten (10) days from the 'opening of navigation' as hereafter defined, to 'open navigation' shall be construed to mean the arrival in Port William or Port Arthur harbor of the first steamer from lower lake ports through Sault canal, and that the entrance or entrances to the Port William and Port Arthur harbor shall be free of obstructions from ice. In the event of ice obstructing in sufficient quantities to interrupt navigation, then all contracts based upon the opening of navigation shall be extended for as many days as such obstruction exist."

The Wearing of Gloves.

Originally the wearing of gloves was conducted on the same sound principle that inspires a miller to wear a white coat, but it has since departed from the primitive idea of usefulness. According to the Encyclopedia Britannica, the wearing of a glove. The farmer king was not fashionable, but it is set forth in the "Odyssey" and the "Iliad" that a farmer he had to deal with certain brambly bushes, and he must also keep his hands clean. The origin of the introduction of gloves. Since that time gloves have had many and strange uses, but the most important of the transfer of property to a challenge to single combat. Not until centuries later did gloves acquire their class significance. It was then they were adopted by royalty that the wearing of gloves in a king's coronation as a mark of station. Some of the early English kings were buried with gloves on their hands. During the reign of King Robert III. of Scotland, the incorporation of the Gloves of the King of France, which still exists, was charted and received armorial bearings. But, although the wearing of gloves in a career through the centuries by men, it has fallen to the women to bring them into universal popularity.—Ex.

Urge Naval Assistance.

The Navy League, of Victoria, asked the board to consider a scheme for

The Time Has Come

For you to look at FALL SAMPLES

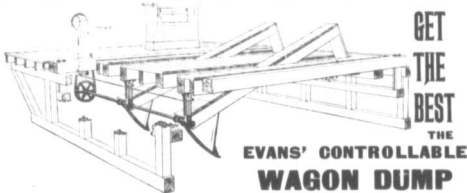
Our judgment, experience and mechanical skill is at your service When you buy our goods you get all the value possible. Not the "Just as Good" but the "BEST."

DONALD FRASER & CO.

Manufacturers of Fine Clothing

WHOLESALE

WINNIPEG—126 Princess Street.
MONTREAL—502 St. Paul Street.



GET
THE
BEST

THE
EVANS' CONTROLLABLE
WAGON DUMP

Perfectly safe, fully controllable, perfect, self-locking device.

Sole Agents:

Waterous Engine Works Co. WINNIPEG
MAN.

THE STUART-ARBUTHNOT MACHINERY CO., LIMITED

SUCCESSORS TO
STUART & HARPER

.. 784-786 Main Street, Winnipeg

HEAVY MACHINERY MERCHANTS
ELECTRICIANS

Sole Agents for:

"Leamer's" Engines and Boilers, "Brow's" Automatic Engines, "Canton" Mining Fire and Boiler Feed Pumps, "Cameron" Steam Pumps, "Dodge" Wood Split Pulleys, "Beardmore's" Leather Belting, MacGregor, Gourlay & Co.'s Food Working Machinery, Stratford Mill Building Co.'s system of complete Flour Mills.

LONDON Motors, Dynamos and Elevators.
PACKARD'S LAMPS, Transformers and Supplies.

The Brock Company
(Limited)

WAREHOUSES:
TORONTO AND MONTREAL

OFFICES WINNIPEG, VANCOUVER, QUEBEC, HALIFAX

SHOWN THIS WEEK BY OUR

MONTREAL HOUSE AND REPRESENTATIVES

3 SPECIALS FOR FALL TRADE:

60 x 80 and 64 x 84

All Wool White Blankets

ALL WOOL
GREY BLANKETS

All Weights

REPRESENTATIVES, MANITOBA, NORTHWEST TERRITORIES
AND BRITISH COLUMBIA:

W. L. BROOK, W. T. WALTERS, G. W. PARKER,
ASHDOWN BLOCK, WINNIPEG

A. E. MONTAGNON
VANCOUVER

PATENTS TRADE MARKS
AND DESIGNS
PROCURED IN ALL COUNTRIES
SPECIAL ATTENTION GIVEN TO PATENT
LITIGATION
PAMPHLET SENT FREE ON APPLICATION
RIDOUT & MAYBEE, 103 BAY "RELT."
TORONTO

Wholesale

We supply all out of town merchants
with a full line of

Jewellery

at wholesale prices. Write for
particulars.

D. R. DINGWALL Ltd.

424 and 584 Main St., Winnipeg.
Sign of the Street Clock.

A. GARRUTHERS & CO.

Dealers and Exporters of

Hides, Wool, Sheepskins,

Tallow, Seneca Root
and Raw Furs

Liberal advances made on shipments
against Bill Lading. Wood Sacks, Hide
Ropes and Tags furnished on applica-
tion.

Office and Warehouse:

120-122 King St., Winnipeg, Man.

JAS. MCCREADY & CO. LIMITED.

WHOLESALE ..

Boot and Shoe
Manufacturers

MONTREAL. QUE.
W. WILLIAMS, Agent.

Rubber Boots

30 CASES RUBBER BOOTS JUST RECEIVED

New Price List and Discounts come into effect for all goods shipped
on and after April 11th.

Until August 1st, discounts on Boston Rubbers will be 2½ per
cent lower than any other company. Place your Fall order for
this popular brand. THAT'S BOSTONS. Every pair absolutely
guaranteed.

ARTHUR CONGDON
WINNIPEG

Grocery Trade Notes.

Cable advices from Barbados report offerings of molasses very light and quoted at 12c per wine gallon, first quality, including cost of purchase, but not any charges.

All descriptions of black pickles have been advanced 50c per barrel at Montreal, owing to decided scarcity of stocks. The new crop of vegetables will not be in until next year, and fresh supplies cannot be provided until about next October.

In 1840 the world's production of beet root sugar, according to the best report, was 1,500,000 tons, and of cane sugar 2,500,000 tons.

According to mail advices from London the market for Indian teas has a fairly strong tone, but the bidding has not been quite up to the mark which has been the feature of late. Teas of a very fair leaf have sold at 64d per lb. and some very good Pekoes at 61. The market is suffering at present, and is not so well supplied as it was, from a plethora of 74c lb. tea, and a corresponding scarcity of tea under 74c. In connection with this, however, there has been an undervalue of weakness in the market for Ceylons, and also the very moderate offerings, some cheaper tea, common grades for several weeks past. Common grades are just steady at 61 per lb.

In connection with the reported damage by frost of the new crop of carrots, D. P. Wasieleski, under date of March 18, writes as follows: "Disagreeing tidings concerning the new crop were whispered last Saturday morning, 15th inst., as a consequence of the previous night's frost. At midday these reports were more and more confirmed, and a speculative movement set in, which pushed the retention certificates up to 185 dr. per 1,000 from dr. 172 at which they stood on Friday evening, and in the afternoon they closed at 100 dr. This rise being entirely in the profit. The reports received from Campos, Amalia and Pyregos are unanimous in confirming the frost caused by frost, and estimates vary from 5 per cent to 91 per cent according to positions and dates of planting. As regards Amalia no damage is reported as yet. Votizna and the Gulf districts seem also to have been spared by the frost."

Hardware Trade Notes.

Cold chain advanced 5 per cent. in the United States last week.

Nickle-plated copper kettles are higher in price at factories.

Scale beams advanced in price cast last week, the discount now being 35 per cent.

Window glass advanced 5 per cent. in the United States last week and the market is very strong.

In its issue of Monday the Oil, Paint and Drug Reporter of New York, said of the turpentine market: "The market was surprised and surprised in the trade here on receipt of telegraphic advices from Savannah on Monday that the market there had been a drop of 8c there. It was generally recognized that the price of 80c, decline, as usual, in the market at the end of last week, was an artificial one, made possible only by manipulation and that the market was very narrow, faded, the tone throughout the interval since our last has been weak. In Savannah a further decline of 2c has occurred since Monday, making the quotation there at the close 43c, with its usual margin. Here, while offerings have been limited, the almost complete absence of demand has caused some accumulation of stocks in yard, which has added to the feeling of weakness. At the close 4½ was a firm but feeble tone, but for arrival next week stock was preferable at 47c. The receipts at Savannah were not heavy during the week were stimulated by the previously prevailing high prices, but latterly a very slight decline is understood, however, that while the market was under manipulation there was a considerable accumulation of supplies in factors' hands, the pressure to dispose of which is held to be largely responsible for the present weakness there."

The Manitoba Gazette contains a proclamation declaring Friday, May 9, to be "Arbor Day."

Dry Goods Trade Notes.

Canadian, woolen goods are in big demand at mills. Black and white and white lines are much in demand. Stocking of goods for the winter is now getting hard to maintain. Homespun, fringes and chevrons are expected to sell largely in the future. Goods for this year, as they are very popular with these people, and cannot be had on the same terms as in the past, are in the same styles as are shown in Canada.

Owing to the recent advances in cottons, says the Toronto Globe, the makers of shirts, collars and such goods have advanced their prices 10 per cent., all classes of heavy cotton goods being affected. Retailers who are now buying these goods will be better off at previous prices, such being the practice in the wholesale dry goods trade, but after present stocks are exhausted, purchasers will have to pay the advance.

Implement Trade Notes.

John Stevens, Implements, Winnipeg, has moved to 321 Elgin avenue, where there has been taken quarters in the Boys' building.

Sisal fibre advanced 1/8 per pound in the United States last week, which means a 1/4 cent advance in strength imparted to the binder twine market.

The binder twine market in Chicago and other centres is strong and inclined to advance. Retailers who are still quoted at 11c per pound, Manila, 550 foot, at 12½c, Manila, 600 foot, at 14c, and pure Manila, 600 c, 60c, Chicago.

The Warder, Bushnell & Gleason Co. are anticipating a large heavy year for the sale of Champion machines, and have a strong force organized to cope with the business. A. H. Puter, their Winnipeg general agent, has headed the list with a new daughter.

J. F. Deemer, representative of the Walkerton Binder Twine Company, Ltd., of Walkerton, Ont., has been making a trip to Manitoba for the purpose of establishing a western connection for his company, and is expected to return to the east with the twine trade during the coming season.

Lumber Trade Notes.

It is expected that the Keewatin Lumber Co. will start up their sawmill at Kaminat in the latter part of the month. The sawmill of the Itat Portage Lumber Company at Itatay River, it is expected, start sawing on Monday.

Among the visitors in Winnipeg this week was D. F. Clark, of Minneapolis, of the firm of Osborne & Clark, dealers in hardware lumber.

D. L. Mathier, of Rat Portage, who was in Winnipeg this week, says that he took out over 300,000 railroad ties during the season just closing. These will be cut and shipped from his mill at Vermilion Bay during the summer.

Lumbermen on the other side of the line are discussing the probable price situation when new white pine lumber of the season's crop comes to the market. They are of the opinion that the market will not show any general decline, as usual, in the market at this time, but will fully maintain its present strength, owing to the scarcity of lumber, coupled with a larger demand.

Live Stock Trade Notes.

Taylor Bros., of Minnesota, shipped ten carloads of cattle and one carload of hogs last week.

Some of the cattle were stockers, and will go to Gleichen, Alberta, for feeding; and the other two carloads were fat animals for the Winnipeg market. The hogs also came to Winnipeg.

No rates have yet been fixed for steamship space for cattle to the old country markets, to be effective when navigation opens, but it is understood that the rates will be asked for Liverpool space. This figure is regarded as being too high, and as there will probably be no cargo available, shippers are not anxious.

Canadians are not all of one mind as to the urgency of having the embargo upon our cattle entering the old country alive removed. An eastern report says that leading exporters are in favor of having the British Government place the present embargo on Canadian cattle some years ago, the

general impression then was that the export live stock trade of Canada would in time be practically a thing of the past, but it has now been proven by any means, as the shipments of cattle to England have increased largely, and English buyers have said that they have realized since the embargo was put on that it has been a great benefit to Canada in more than one way. The farmers have been compelled to feed and fatten their young cattle, and therefore have realized much more money for them, and the result of this has been that the bulk of the surplus of cattle today are rich, while in years gone by, when they used to sell their stockers for almost nothing, they were always clamoring to make ends meet. In addition to the above, they remarked that the trade never made any money by shipping stockers, but on the contrary, it was the means of raising quite a few who made this class of trade a specialty.

Navigation Open.

Navigation was opened at Fort William on April 10, when the steamer Midland Queen succeeded in cutting through the ice to the bay and reaching the wharf. This early opening of navigation is a great advantage to the west this year, as it will mean almost immediate openings for grain trade. Grain shipments via the lakes will at once begin. The Canadian Pacific Railway, it is understood, has leased a number of locomotives in the United States, which will be utilized in pulling the heavy rush of traffic which will set in as a result of the opening of navigation.

Rope.

One of the most entertaining and instructive articles in the Commercial we have seen for a long time is a little booklet entitled "Ropes," which has been issued by the "Lipson-Walton Company, ship chandlers, of 155-163 River street, Cleveland, Ohio. The history of rope making from earliest times is dealt with in brief and interesting style and the highly scientific principles of the manufacture of rope are also treated with illustrations. Altogether the history and making of rope as created by the Lipson-Walton Co. is as good reading as a fairy tale, while it possesses the advantage of being a true story.

Merchant—So you're looking for a position?

Young College Graduate—No, I've wasted so much time looking for a "position" that I'll be satisfied now to take a "job."—Philadelphia Press.

"Don't crowd me!" exclaimed several voices at once. "You are crushing the life out of this little fellow." "Worse than that!" gasped the undersized man in the center of the throng. "They are crushing a lot of 15-cent cigars in my vest pocket!"—Chicago Tribune.

THE RIGHT PLACE.

To advertise businesses for sale, partners wanted, travellers or clerks wanted, in the Commercial, it reaches the people you want to get at.

WANTED.

Partnership in an established mercantile business, wholesale preferred; inquire to the Commercial. E. W. M. B. care The Commercial.

STEAM LAUNDRY.

Good opening for a man with \$1,000 capital. Address Box 431, Portage in Prairie, Man.

FARM FOR RENT.

In Winnipeg District. Apply at The Commercial office.

RARE CHANCE.

General store business and stock for sale in one of the best towns in Manitoba. Or would sell the hardware department separate. You'll sell or rent building. Address Burgess, care The Commercial.

A CATTLE PROPOSITION.

Every head of breeding stock bought now will increase to several in a few years' time, as Valley View district, Ont. This stock, amounting to \$200,000, is in the hands of the stockholder. The turnover last year was about \$300,000. Pawning in connection with stock, and the premises will be sold or leased at option of purchaser. This is a splendid opportunity for a man with small capital. Terms part cash, balance in monthly payments. References to J. Boucher, Boucheville P. O., Ont.

FOR SALE.

The undersigned offers for sale his stock of general merchandise at Boucheville, Ont. This stock, amounting to \$200,000, is in the hands of the stockholder. The turnover last year was about \$300,000. Pawning in connection with stock, and the premises will be sold or leased at option of purchaser. This is a splendid opportunity for a man with small capital. Terms part cash, balance in monthly payments. References to J. Boucher, Boucheville P. O., Ont.

WANTED.

To purchase, at rate on dollar, general store business. Stock \$15,000 to \$20,000. Address Box 593, care The Commercial.

FLOUR MILL WANTED.

A liberal bonus is offered for the erection of a 100 bushel flour mill and 2,000 bushel elevator at Alameda, Assa. Apply to J. W. Wilcox, Alameda, Assa.

SITUATION WANTED.

SITUATION WANTED as salesman in general store. Two years experience in dry goods and new years in groceries. First class references furnished. R. Shepard, Dauphin, Man.

FOR SALE.

An up-to-date General Store in the Hazel Cliff, Ontario. Very well stocked; no better; stock \$5,000.00, well assorted and new year's prospects bright. Apply to Meender & Co., Hazel Cliff P. O., Assa.

GENERAL STORE FOR SALE.

General Store for Sale—First-class general store business for sale in the town of Reston, Poutassougan J. P. first. Apply A. A. Smith, Reston, Man.

FOR SALE.

A townsite in a growing town on main line of C. P. R. good investment for a man with some cash. Also a building suitable for dry goods and clothing. First class chance to start in this line of business. Address X.Y.Z., care The Commercial, Winnipeg.

Employment

is now the question for many men. You can make money selling our complete assortment of fruit and ornamental stock for sale or spring delivery. Write for terms. Address—The Jewell Nurseries Co., Ltd., City, Minn. (Established 1868. One thousand acres.)

WANTED—SEVERAL PERSONS OF CHARACTER AND good reputation in each city in The Commercial. Good references and advertising order established wealthy business house of solid financial standing. Salary \$18 per week, plus expenses additional, all payable in cash each Wednesday direct from bank office. Horse and carriage furnished, when necessary. References. Bibles and stamps stamped envelope. Manager, 86 Caxton building, Chicago.

OVER-ALLS PAINTS

TRADE MARK BRAND

SHIRTS & SMOCKS

Our traveller is leaving on his regular Spring trip and will shortly call on you. Kindly save him your overall order.

The Hoover Mfg. Co. Ltd.
 Maw's Block, Cor. King and William (opposite Leland Hotel), Winnipeg.

THE Edwardsburg Brands

STARCH AND SYRUP

Are well known all over the Dominion as a

STANDARD OF QUALITY

Assorted Stocks of all styles of packages now on hand with Winnipeg Wholesale Grocers. Order **CROWN BRAND SYRUP** in 2, 5, 10 and 20 lb. Tins.

BABIES, BLACK AND WHITE, DEMAND



E. NICHOLSON

WHOLESALE AGENT

115 Bannatyne St. East, Winnipeg

Everything for Power

WINNIPEG MACHINERY & SUPPLY CO.

Wholesale Dealers

The Laurie Engine Co. Montreal, Engines, etc.; Olds Motor Works, Guelph, Engines for all purposes; The Hamilton Iron Tool Co., Ironworking Tools; Cowan & Co., Woodworking Machinery; The Ohio Pump Co., Canton, Ohio, "Ohio" Steam Pumps for all purposes; Flour Mills and Elevator Machinery and Supplies; Saw Mill Machinery; Chisholm, Boyd & White Co., Boyd's Patent Brickmaking Machinery; The United Electric Co., Toronto; Electrical Motors, Dynamos and Supplies; Shafting, Pulleys and all Accessories. WRITE US

Second Hand Machinery Bought, Sold or Exchanged.

179 Notre Dame Ave. East, Winnipeg, Man.

Excelsior Cement

Makes the strongest and most desirable walls and floors for buildings. Full descriptions.

Manitoba No. 1 Hard Wall Plaster—Up-to-date Plaster for finishing walls. Made in Manitoba by

THE MANITOBA UNION MINING CO. Ltd.

Office—214 Grain Exchange, Winnipeg



FISH

Fresh salt water fish, including salmon, halibut, cod, haddock, shad, trout, mackerel, smelts, tommy cods, sounders, herring, fannan haddie, sea bass and salt water eels.

W. J. GUEST

Wholesale Fish, Game, Poultry, Etc.
602 Main St., Winnipeg.

SOURIS COAL

The best and cheapest fuel in the market. Shipped direct from mines at Roche Perce to all points in Manitoba and the Territories.

Souris Coal Mining Co. Ltd.

Winnipeg Office

P.O. Box 744.

447 MAIN ST.

**THE W. E. SANFORD
MF'G CO., LTD.**
HAMILTON, ONT.

Wholesale

Clothing Manufacturers

Offices and sample rooms in the Sanford block, Winnipeg, corner of Princess and Bannatyne streets, where a complete set of samples can always be seen. Western representatives—H. Kite, W. Dunlop, Geo. Shaw, A. McAllister.

FRANK LIGHTCAP

DEALER IN

HIDES PELTS, WOOL, SENGES, Etc.

EXPORTER OF
NORTHERN FURS

Highest prices paid for consignments and returns made promptly. Write for circulars containing market reports and full quotations.

172-174 KING ST., WINNIPEG.
P. O. Box 464.

Repeat Orders To Hand



TENNIS BALLS
RUBBER BALLS
GARDEN SETS
MARBLES
CANES AND PIPES

Letter Orders Receive Prompt Attention

J. L. MEIKLE & CO.
PORT ARTHUR, ONT.

CLARE BROS. & CO.

Stoves and Furnaces

Metal Roofing and Siding

Steel Embossed Ceiling
Eavetrough and Conductor Pipe
Graniteware and Tinware

CLARE & BROCKEST
Managers.

WESTERN BRANCH, WINNIPEG, MAN.

Winnipeg Hardware and Metal Prices.
 ANVILS—Per pound, 102½¢; anvil and vice combined, each, \$34.50.
 A. CRIBS—Trot hole, Vaughan's, each, \$4.75.
 AXES—Bench, 60¢ per cent; chopping and cut, 75¢; double bit, \$1.15 per doz.
 BENCH—Per doz., \$5.50 per 100 lb.
 BELLOWS—20x24, \$4.50; 26, \$4.85; 30, \$5.25; 36, \$7.25; 38, \$7.50; 40, \$8.00.
 BELTING—Agricultural, 50¢ per cent; heavy, 60¢ per cent; 75¢ per cent.
 BELTING—Agricultural, 65¢ per cent; Jennies, 10 per cent; Gilmore's, 60 per cent.
 BERTONISE—45.50 per 100lb.
 BIRTS—Carriage, 50 per cent; light, 45 per cent; plow, 30 per cent; sleigh, 20 per cent; stove, 60 per cent; fire, 60 per cent.
 BUILDING PAPER—Anchor, plain, 50¢; Cyclone and Jubilee, plain, 50¢; Anchor, tarred, 50¢; Cyclone and Jubilee, tarred, 75¢; Shield, tarred, 50¢.
 BUTS—Cast, loose pin, common, 60 per cent; Peterboro, 40 per cent; wrought, cast, narrow 45 per cent; loose pin, 60 per cent; bronze, 65¢ up.
 CARTRIDGES—Rim fire, American, 20¢ per doz.; central fire pistol, American, 50¢ per cent; Dominion, 50¢ per cent; Remington, 50¢ per cent; American 10 per cent advance on list; 20, 25, 30, 35, 40, 45, 50, 55, 60, 65, 70, 75, 80, 85, 90, 95, 100.
 CEMENT—Portland, barrel, \$5.00-5.40.
 CHAINS—Full, 7½, \$5.00; 1½ inch and 2 inch, logging chain, 10 in. link, 10 in. link, \$5.25; from, single, per ton yards, 10 to 25; double, 25 to 40.
 CHISELS—B, B steel, frame, 50 per cent; wood frame, 20¢ less net.
 COPPER—Tinned, sheet, 30¢; plain, 20¢; bolts and T, 10¢; pipe, plain tin, 10¢; per lb., spun 30¢.
 CRACKS—Common, 20¢ per 100 per cent; Nicholson's and Black Diamond, 60 per cent.
 GLUE—Sheets, 15¢; broken, 15¢; pipe, for kauling, 15¢; putty, 15¢.
 GRABERS—KYLE-Pearce, per case, 10 cases, \$7.50; Diamond, light, \$1.50 case; 100, \$15.00, 50¢.
 GRINDSTONES—\$1.50 per 100 lb.
 HAMS—Cured, 10¢ per lb.
 HARVEST TOOLS—10, 9 and 10 per doz.
 HORSEHOSES—Iron shoes, keg, 8 and 10; 2 and larger, \$4.50. Less than 2 and larger, extra.
 IRON—Best, extra, finished, oval heads, list price, No. 5, \$7.50 box; No. 6, \$8.00; No. 7, \$8.50; No. 8, \$9.00; No. 9 and 10, \$5.50 box. Discount on these prices, 40 per cent.
 IRON—Heavy T strap, per 100lb. weight, light, 60 per cent; screw hook, 60¢; 4 to 10 in. 10 in. up, 60¢ per lb.
 IRON—Bar iron, 100 lb. base price, \$5.00; band iron, 100 lb., \$2.50 base; Swedish iron, 100lb., \$4.75 base; sheet, black, 100 lb., \$2.50; 24, \$2.50; 26, \$2.50; 28, \$2.50; 30, \$2.50; 32, \$2.50; 34, \$2.50; 36, \$2.50; 38, \$2.50; 40, \$2.50; 42, \$2.50; 44, \$2.50; 46, \$2.50; 48, \$2.50; 50, \$2.50; 52, \$2.50; 54, \$2.50; 56, \$2.50; 58, \$2.50; 60, \$2.50; 62, \$2.50; 64, \$2.50; 66, \$2.50; 68, \$2.50; 70, \$2.50; 72, \$2.50; 74, \$2.50; 76, \$2.50; 78, \$2.50; 80, \$2.50; 82, \$2.50; 84, \$2.50; 86, \$2.50; 88, \$2.50; 90, \$2.50; 92, \$2.50; 94, \$2.50; 96, \$2.50; 98, \$2.50; 100, \$2.50.
 LEAD—Pig, per lb., 6¢; sheet, 6½¢.
 NAILS—Cut, 30d up to 45¢; 50d, \$3.10; 60d, \$3.20; 70d, \$3.30; 80d, \$3.40; 90d, \$3.50; 100d, \$3.60; 110d, \$3.70; 120d, \$3.80; 130d, \$3.90; 140d, \$4.00; 150d, \$4.10; 160d, \$4.20; 170d, \$4.30; 180d, \$4.40; 190d, \$4.50; 200d, \$4.60; 210d, \$4.70; 220d, \$4.80; 230d, \$4.90; 240d, \$5.00; 250d, \$5.10; 260d, \$5.20; 270d, \$5.30; 280d, \$5.40; 290d, \$5.50; 300d, \$5.60; 310d, \$5.70; 320d, \$5.80; 330d, \$5.90; 340d, \$6.00; 350d, \$6.10; 360d, \$6.20; 370d, \$6.30; 380d, \$6.40; 390d, \$6.50; 400d, \$6.60; 410d, \$6.70; 420d, \$6.80; 430d, \$6.90; 440d, \$7.00; 450d, \$7.10; 460d, \$7.20; 470d, \$7.30; 480d, \$7.40; 490d, \$7.50; 500d, \$7.60; 510d, \$7.70; 520d, \$7.80; 530d, \$7.90; 540d, \$8.00; 550d, \$8.10; 560d, \$8.20; 570d, \$8.30; 580d, \$8.40; 590d, \$8.50; 600d, \$8.60; 610d, \$8.70; 620d, \$8.80; 630d, \$8.90; 640d, \$9.00; 650d, \$9.10; 660d, \$9.20; 670d, \$9.30; 680d, \$9.40; 690d, \$9.50; 700d, \$9.60; 710d, \$9.70; 720d, \$9.80; 730d, \$9.90; 740d, \$10.00; 750d, \$10.10; 760d, \$10.20; 770d, \$10.30; 780d, \$10.40; 790d, \$10.50; 800d, \$10.60; 810d, \$10.70; 820d, \$10.80; 830d, \$10.90; 840d, \$11.00; 850d, \$11.10; 860d, \$11.20; 870d, \$11.30; 880d, \$11.40; 890d, \$11.50; 900d, \$11.60; 910d, \$11.70; 920d, \$11.80; 930d, \$11.90; 940d, \$12.00; 950d, \$12.10; 960d, \$12.20; 970d, \$12.30; 980d, \$12.40; 990d, \$12.50; 1000d, \$12.60; 1010d, \$12.70; 1020d, \$12.80; 1030d, \$12.90; 1040d, \$13.00; 1050d, \$13.10; 1060d, \$13.20; 1070d, \$13.30; 1080d, \$13.40; 1090d, \$13.50; 1100d, \$13.60; 1110d, \$13.70; 1120d, \$13.80; 1130d, \$13.90; 1140d, \$14.00; 1150d, \$14.10; 1160d, \$14.20; 1170d, \$14.30; 1180d, \$14.40; 1190d, \$14.50; 1200d, \$14.60; 1210d, \$14.70; 1220d, \$14.80; 1230d, \$14.90; 1240d, \$15.00; 1250d, \$15.10; 1260d, \$15.20; 1270d, \$15.30; 1280d, \$15.40; 1290d, \$15.50; 1300d, \$15.60; 1310d, \$15.70; 1320d, \$15.80; 1330d, \$15.90; 1340d, \$16.00; 1350d, \$16.10; 1360d, \$16.20; 1370d, \$16.30; 1380d, \$16.40; 1390d, \$16.50; 1400d, \$16.60; 1410d, \$16.70; 1420d, \$16.80; 1430d, \$16.90; 1440d, \$17.00; 1450d, \$17.10; 1460d, \$17.20; 1470d, \$17.30; 1480d, \$17.40; 1490d, \$17.50; 1500d, \$17.60; 1510d, \$17.70; 1520d, \$17.80; 1530d, \$17.90; 1540d, \$18.00; 1550d, \$18.10; 1560d, \$18.20; 1570d, \$18.30; 1580d, \$18.40; 1590d, \$18.50; 1600d, \$18.60; 1610d, \$18.70; 1620d, \$18.80; 1630d, \$18.90; 1640d, \$19.00; 1650d, \$19.10; 1660d, \$19.20; 1670d, \$19.30; 1680d, \$19.40; 1690d, \$19.50; 1700d, \$19.60; 1710d, \$19.70; 1720d, \$19.80; 1730d, \$19.90; 1740d, \$20.00; 1750d, \$20.10; 1760d, \$20.20; 1770d, \$20.30; 1780d, \$20.40; 1790d, \$20.50; 1800d, \$20.60; 1810d, \$20.70; 1820d, \$20.80; 1830d, \$20.90; 1840d, \$21.00; 1850d, \$21.10; 1860d, \$21.20; 1870d, \$21.30; 1880d, \$21.40; 1890d, \$21.50; 1900d, \$21.60; 1910d, \$21.70; 1920d, \$21.80; 1930d, \$21.90; 1940d, \$22.00; 1950d, \$22.10; 1960d, \$22.20; 1970d, \$22.30; 1980d, \$22.40; 1990d, \$22.50; 2000d, \$22.60; 2010d, \$22.70; 2020d, \$22.80; 2030d, \$22.90; 2040d, \$23.00; 2050d, \$23.10; 2060d, \$23.20; 2070d, \$23.30; 2080d, \$23.40; 2090d, \$23.50; 2100d, \$23.60; 2110d, \$23.70; 2120d, \$23.80; 2130d, \$23.90; 2140d, \$24.00; 2150d, \$24.10; 2160d, \$24.20; 2170d, \$24.30; 2180d, \$24.40; 2190d, \$24.50; 2200d, \$24.60; 2210d, \$24.70; 2220d, \$24.80; 2230d, \$24.90; 2240d, \$25.00; 2250d, \$25.10; 2260d, \$25.20; 2270d, \$25.30; 2280d, \$25.40; 2290d, \$25.50; 2300d, \$25.60; 2310d, \$25.70; 2320d, \$25.80; 2330d, \$25.90; 2340d, \$26.00; 2350d, \$26.10; 2360d, \$26.20; 2370d, \$26.30; 2380d, \$26.40; 2390d, \$26.50; 2400d, \$26.60; 2410d, \$26.70; 2420d, \$26.80; 2430d, \$26.90; 2440d, \$27.00; 2450d, \$27.10; 2460d, \$27.20; 2470d, \$27.30; 2480d, \$27.40; 2490d, \$27.50; 2500d, \$27.60; 2510d, \$27.70; 2520d, \$27.80; 2530d, \$27.90; 2540d, \$28.00; 2550d, \$28.10; 2560d, \$28.20; 2570d, \$28.30; 2580d, \$28.40; 2590d, \$28.50; 2600d, \$28.60; 2610d, \$28.70; 2620d, \$28.80; 2630d, \$28.90; 2640d, \$29.00; 2650d, \$29.10; 2660d, \$29.20; 2670d, \$29.30; 2680d, \$29.40; 2690d, \$29.50; 2700d, \$29.60; 2710d, \$29.70; 2720d, \$29.80; 2730d, \$29.90; 2740d, \$30.00; 2750d, \$30.10; 2760d, \$30.20; 2770d, \$30.30; 2780d, \$30.40; 2790d, \$30.50; 2800d, \$30.60; 2810d, \$30.70; 2820d, \$30.80; 2830d, \$30.90; 2840d, \$31.00; 2850d, \$31.10; 2860d, \$31.20; 2870d, \$31.30; 2880d, \$31.40; 2890d, \$31.50; 2900d, \$31.60; 2910d, \$31.70; 2920d, \$31.80; 2930d, \$31.90; 2940d, \$32.00; 2950d, \$32.10; 2960d, \$32.20; 2970d, \$32.30; 2980d, \$32.40; 2990d, \$32.50; 3000d, \$32.60; 3010d, \$32.70; 3020d, \$32.80; 3030d, \$32.90; 3040d, \$33.00; 3050d, \$33.10; 3060d, \$33.20; 3070d, \$33.30; 3080d, \$33.40; 3090d, \$33.50; 3100d, \$33.60; 3110d, \$33.70; 3120d, \$33.80; 3130d, \$33.90; 3140d, \$34.00; 3150d, \$34.10; 3160d, \$34.20; 3170d, \$34.30; 3180d, \$34.40; 3190d, \$34.50; 3200d, \$34.60; 3210d, \$34.70; 3220d, \$34.80; 3230d, \$34.90; 3240d, \$35.00; 3250d, \$35.10; 3260d, \$35.20; 3270d, \$35.30; 3280d, \$35.40; 3290d, \$35.50; 3300d, \$35.60; 3310d, \$35.70; 3320d, \$35.80; 3330d, \$35.90; 3340d, \$36.00; 3350d, \$36.10; 3360d, \$36.20; 3370d, \$36.30; 3380d, \$36.40; 3390d, \$36.50; 3400d, \$36.60; 3410d, \$36.70; 3420d, \$36.80; 3430d, \$36.90; 3440d, \$37.00; 3450d, \$37.10; 3460d, \$37.20; 3470d, \$37.30; 3480d, \$37.40; 3490d, \$37.50; 3500d, \$37.60; 3510d, \$37.70; 3520d, \$37.80; 3530d, \$37.90; 3540d, \$38.00; 3550d, \$38.10; 3560d, \$38.20; 3570d, \$38.30; 3580d, \$38.40; 3590d, \$38.50; 3600d, \$38.60; 3610d, \$38.70; 3620d, \$38.80; 3630d, \$38.90; 3640d, \$39.00; 3650d, \$39.10; 3660d, \$39.20; 3670d, \$39.30; 3680d, \$39.40; 3690d, \$39.50; 3700d, \$39.60; 3710d, \$39.70; 3720d, \$39.80; 3730d, \$39.90; 3740d, \$40.00; 3750d, \$40.10; 3760d, \$40.20; 3770d, \$40.30; 3780d, \$40.40; 3790d, \$40.50; 3800d, \$40.60; 3810d, \$40.70; 3820d, \$40.80; 3830d, \$40.90; 3840d, \$41.00; 3850d, \$41.10; 3860d, \$41.20; 3870d, \$41.30; 3880d, \$41.40; 3890d, \$41.50; 3900d, \$41.60; 3910d, \$41.70; 3920d, \$41.80; 3930d, \$41.90; 3940d, \$42.00; 3950d, \$42.10; 3960d, \$42.20; 3970d, \$42.30; 3980d, \$42.40; 3990d, \$42.50; 4000d, \$42.60; 4010d, \$42.70; 4020d, \$42.80; 4030d, \$42.90; 4040d, \$43.00; 4050d, \$43.10; 4060d, \$43.20; 4070d, \$43.30; 4080d, \$43.40; 4090d, \$43.50; 4100d, \$43.60; 4110d, \$43.70; 4120d, \$43.80; 4130d, \$43.90; 4140d, \$44.00; 4150d, \$44.10; 4160d, \$44.20; 4170d, \$44.30; 4180d, \$44.40; 4190d, \$44.50; 4200d, \$44.60; 4210d, \$44.70; 4220d, \$44.80; 4230d, \$44.90; 4240d, \$45.00; 4250d, \$45.10; 4260d, \$45.20; 4270d, \$45.30; 4280d, \$45.40; 4290d, \$45.50; 4300d, \$45.60; 4310d, \$45.70; 4320d, \$45.80; 4330d, \$45.90; 4340d, \$46.00; 4350d, \$46.10; 4360d, \$46.20; 4370d, \$46.30; 4380d, \$46.40; 4390d, \$46.50; 4400d, \$46.60; 4410d, \$46.70; 4420d, \$46.80; 4430d, \$46.90; 4440d, \$47.00; 4450d, \$47.10; 4460d, \$47.20; 4470d, \$47.30; 4480d, \$47.40; 4490d, \$47.50; 4500d, \$47.60; 4510d, \$47.70; 4520d, \$47.80; 4530d, \$47.90; 4540d, \$48.00; 4550d, \$48.10; 4560d, \$48.20; 4570d, \$48.30; 4580d, \$48.40; 4590d, \$48.50; 4600d, \$48.60; 4610d, \$48.70; 4620d, \$48.80; 4630d, \$48.90; 4640d, \$49.00; 4650d, \$49.10; 4660d, \$49.20; 4670d, \$49.30; 4680d, \$49.40; 4690d, \$49.50; 4700d, \$49.60; 4710d, \$49.70; 4720d, \$49.80; 4730d, \$49.90; 4740d, \$50.00; 4750d, \$50.10; 4760d, \$50.20; 4770d, \$50.30; 4780d, \$50.40; 4790d, \$50.50; 4800d, \$50.60; 4810d, \$50.70; 4820d, \$50.80; 4830d, \$50.90; 4840d, \$51.00; 4850d, \$51.10; 4860d, \$51.20; 4870d, \$51.30; 4880d, \$51.40; 4890d, \$51.50; 4900d, \$51.60; 4910d, \$51.70; 4920d, \$51.80; 4930d, \$51.90; 4940d, \$52.00; 4950d, \$52.10; 4960d, \$52.20; 4970d, \$52.30; 4980d, \$52.40; 4990d, \$52.50; 5000d, \$52.60; 5010d, \$52.70; 5020d, \$52.80; 5030d, \$52.90; 5040d, \$53.00; 5050d, \$53.10; 5060d, \$53.20; 5070d, \$53.30; 5080d, \$53.40; 5090d, \$53.50; 5100d, \$53.60; 5110d, \$53.70; 5120d, \$53.80; 5130d, \$53.90; 5140d, \$54.00; 5150d, \$54.10; 5160d, \$54.20; 5170d, \$54.30; 5180d, \$54.40; 5190d, \$54.50; 5200d, \$54.60; 5210d, \$54.70; 5220d, \$54.80; 5230d, \$54.90; 5240d, \$55.00; 5250d, \$55.10; 5260d, \$55.20; 5270d, \$55.30; 5280d, \$55.40; 5290d, \$55.50; 5300d, \$55.60; 5310d, \$55.70; 5320d, \$55.80; 5330d, \$55.90; 5340d, \$56.00; 5350d, \$56.10; 5360d, \$56.20; 5370d, \$56.30; 5380d, \$56.40; 5390d, \$56.50; 5400d, \$56.60; 5410d, \$56.70; 5420d, \$56.80; 5430d, \$56.90; 5440d, \$57.00; 5450d, \$57.10; 5460d, \$57.20; 5470d, \$57.30; 5480d, \$57.40; 5490d, \$57.50; 5500d, \$57.60; 5510d, \$57.70; 5520d, \$57.80; 5530d, \$57.90; 5540d, \$58.00; 5550d, \$58.10; 5560d, \$58.20; 5570d, \$58.30; 5580d, \$58.40; 5590d, \$58.50; 5600d, \$58.60; 5610d, \$58.70; 5620d, \$58.80; 5630d, \$58.90; 5640d, \$59.00; 5650d, \$59.10; 5660d, \$59.20; 5670d, \$59.30; 5680d, \$59.40; 5690d, \$59.50; 5700d, \$59.60; 5710d, \$59.70; 5720d, \$59.80; 5730d, \$59.90; 5740d, \$60.00; 5750d, \$60.10; 5760d, \$60.20; 5770d, \$60.30; 5780d, \$60.40; 5790d, \$60.50; 5800d, \$60.60; 5810d, \$60.70; 5820d, \$60.80; 5830d, \$60.90; 5840d, \$61.00; 5850d, \$61.10; 5860d, \$61.20; 5870d, \$61.30; 5880d, \$61.40; 5890d, \$61.50; 5900d, \$61.60; 5910d, \$61.70; 5920d, \$61.80; 5930d, \$61.90; 5940d, \$62.00; 5950d, \$62.10; 5960d, \$62.20; 5970d, \$62.30; 5980d, \$62.40; 5990d, \$62.50; 6000d, \$62.60; 6010d, \$62.70; 6020d, \$62.80; 6030d, \$62.90; 6040d, \$63.00; 6050d, \$63.10; 6060d, \$63.20; 6070d, \$63.30; 6080d, \$63.40; 6090d, \$63.50; 6100d, \$63.60; 6110d, \$63.70; 6120d, \$63.80; 6130d, \$63.90; 6140d, \$64.00; 6150d, \$64.10; 6160d, \$64.20; 6170d, \$64.30; 6180d, \$64.40; 6190d, \$64.50; 6200d, \$64.60; 6210d, \$64.70; 6220d, \$64.80; 6230d, \$64.90; 6240d, \$65.00; 6250d, \$65.10; 6260d, \$65.20; 6270d, \$65.30; 6280d, \$65.40; 6290d, \$65.50; 6300d, \$65.60; 6310d, \$65.70; 6320d, \$65.80; 6330d, \$65.90; 6340d, \$66.00; 6350d, \$66.10; 6360d, \$66.20; 6370d, \$66.30; 6380d, \$66.40; 6390d, \$66.50; 6400d, \$66.60; 6410d, \$66.70; 6420d, \$66.80; 6430d, \$66.90; 6440d, \$67.00; 6450d, \$67.10; 6460d, \$67.20; 6470d, \$67.30; 6480d, \$67.40; 6490d, \$67.50; 6500d, \$67.60; 6510d, \$67.70; 6520d, \$67.80; 6530d, \$67.90; 6540d, \$68.00; 6550d, \$68.10; 6560d, \$68.20; 6570d, \$68.30; 6580d, \$68.40; 6590d, \$68.50; 6600d, \$68.60; 6610d, \$68.70; 6620d, \$68.80; 6630d, \$68.90; 6640d, \$69.00; 6650d, \$69.10; 6660d, \$69.20; 6670d, \$69.30; 6680d, \$69.40; 6690d, \$69.50; 6700d, \$69.60; 6710d, \$69.70; 6720d, \$69.80; 6730d, \$69.90; 6740d, \$70.00; 6750d, \$70.10; 6760d, \$70.20; 6770d, \$70.30; 6780d, \$70.40; 6790d, \$70.50; 6800d, \$70.60; 6810d, \$70.70; 6820d, \$70.80; 6830d, \$70.90; 6840d, \$71.00; 6850d, \$71.10; 6860d, \$71.20; 6870d, \$71.30; 6880d, \$71.40; 6890d, \$71.50; 6900d, \$71.60; 6910d, \$71.70; 6920d, \$71.80; 6930d, \$71.90; 6940d, \$72.00; 6950d, \$72.10; 6960d, \$72.20; 6970d, \$72.30; 6980d, \$72.40; 6990d, \$72.50; 7000d, \$72.60; 7010d, \$72.70; 7020d, \$72.80; 7030d, \$72.90; 7040d, \$73.00; 7050d, \$73.10; 7060d, \$73.20; 7070d, \$73.30; 7080d, \$73.40; 7090d, \$73.50; 7100d, \$73.60; 7110d, \$73.70; 7120d, \$73.80; 7130d, \$73.90; 7140d, \$74.00; 7150d, \$74.10; 7160d, \$74.20; 7170d, \$74.30; 7180d, \$74.40; 7190d, \$74.50; 7200d, \$74.60; 7210d, \$74.70; 7220d, \$74.80; 7230d, \$74.90; 7240d, \$75.00; 7250d, \$75.10; 7260d, \$75.20; 7270d, \$75.30; 7280d, \$75.40; 7290d, \$75.50; 7300d, \$75.60; 7310d, \$75.70; 7320d, \$75.80; 7330d, \$75.90; 7340d, \$76.00; 7350d, \$76.10; 7360d, \$76.20; 7370d, \$76.30; 7380d, \$76.40; 7390d, \$76.50; 7400d, \$76.60; 7410d, \$76.70; 7420d, \$76.80; 7430d, \$76.90; 7440d, \$77.00; 7450d, \$77.10; 7460d, \$77.20; 7470d, \$77.30; 7480d, \$77.40; 7490d, \$77.50; 7500d, \$77.60; 7510d, \$77.70; 7520d, \$77.80; 7530d, \$77.90; 7540d, \$78.00; 7550d, \$78.10; 7560d, \$78.20; 7570d, \$78.30; 7580d, \$78.40; 7590d, \$78.50; 7600d, \$78.60; 7610d, \$78.70; 7620d, \$78.80; 7630d, \$78.90; 7640d, \$79.00; 7650d, \$79.10; 7660d, \$79.20; 7670d, \$79.30; 7680d, \$79.40; 7690d, \$79.50; 7700d, \$79.60; 7710d, \$79.70; 7720d, \$79.80; 7730d, \$79.90; 7740d, \$

Marmalade Oranges

Order now as season is over about April 1st. If you don't want the oranges we can give you it done up ready for the table—

In 7-lb. pails, per doz. 17.20
In tins, per dozen 7.20
1-lb. glass jars 2.00

Attractive package. Order sample lot.

THE **MACPHERSON FRUIT CO.**

LIMITED.

491 Main St., Winnipeg

**Genuine Wabash
Screen Doors
Reliable
Refrigerators
Lightning Ice
Cream Freezers**

Write for prices.

MARSHALL-WELLS CO.

WHOLESALE HARDWARE,
WINNIPEG.

DRUGS

We now have a fresh stock of heavy drugs, such as EP-SOM SALTS, SULPHUR, Salt-petre, and Borax, not excelled in point of purity. Low prices for quantity.

Write for quotations.

The Martin, Bole & Wynne Co.

Wholesale Druggists.
P. O. Drawer 1461. WINNIPEG.

A. C. LESLIE & CO.

HEADQUARTERS FOR

Iron, Steel and Metals

WHOLESALE BUYERS
ONLY SUPPLIED

509 to 512 Merchants' Bank Building - WINNIPEG

E. H. BISSETT, Agent, Winnipeg

WE HAVE ADDED

TRUNKS AND VALISES

to our line. We are now mailing illustrated catalogue to the trade. If you do not receive one, drop us a postal card. Any sorting order can be packed in the trunks. Three car loads now in stock and cheaper than you can buy broken lots east.

THE KILGOUR-RIMER CO. Ltd. WHOLESALE

87 Princess Street, Winnipeg

RAT PORTAGE LUMBER COMPANY

LIMITED

MANUFACTURERS OF ..

**LUMBER,
LATH, SHINGLES,
SASH,
DOORS**

AND ALL KINDS
OF WOODWORK

Head Office and Mills at RAT PORTAGE, ONT.

Branch: Point Douglas Avenue, WINNIPEG

The Flood



RUBBER BOOTS

Send us your orders for Short Boots. Our stock complete in all sizes. Sole agents for Berlin Rubbers (Daisy and America Brands). None better.

H. G. MIDDLETON & BRO.

Adjoining Leland Hotel.

139 ALBERT STREET
WINNIPEG

P. O. BOX 823

S. Greenshields, Son & Co.

MONTREAL

Wholesale ..

**DRY GOODS
MEN'S FURNISHINGS
CARPETS, ETC.**

Winnipeg Sample Rooms:

412-414 McIntyre Block

Represented by—R. R. GALLAGHER, G. M. NEWTON, A. C. RUSSELL.

THE WESTERN PACKING COMPANY

Our new abattoir on Alexander avenue is now completed and running, and we are ready to supply the trade both in the city and country with fresh killed meat of finest quality. Mail orders given prompt attention.

We are also open to buy live or dressed hogs and all kinds of produce, paying highest cash price for same.

Abattoir and Offices

ALEXANDER AVENUE, - WINNIPEG

HICKS BROS. & Co.

TEA IMPORTERS

And wholesale dealers in

Fancy Groceries, Butter, Eggs, Cheese

Packers of Britannia, Beaver and Buffalo Brands of Packet Teas, and sole Agents for These, Lipton's Package Teas for Manitoba, N. W. Territories and British Columbia.

277 Rupert Street.

274 Pacific Avenue, Winnipeg

Factory,

WINNIPEG, MAN. YARMOUTH, N. S.

The Redding Shoe Mfg. Co.

Wholesale Boots
and Shoes

You are invited to inspect carefully our New Samples for Next Fall, consisting of Mocassins, Gloves, Mitts, Rubbers, Overshoes, and the best line of Staple Goods ever shown in the West, for their Values, and Wearing Qualities. All Solid Leather Goods Every Pair Guaranteed.

Large and well assorted stock always on hand. Sorting orders receive Prompt and Careful Attention

A trial solicited.

WAREHOUSES:

137 BANATHAY AVE., WINNIPEG

P. O. Box 753.

Telephone 1947

24 to 25c per lb. net for their supplies at present.

BUTTER—Dairy—Conditions are favorable to the production of dairy butter and there is very little surplus. Prices have not changed any this week. Wholesale dealers are paying 15c per pound for creamery butter in 100 lb. tins, 15c for prints; 10c to 18c for ordinary qualities, but seconds are ordinary, 12c per pound.

CHEESE—Jobbers are getting 13 to 15c per pound for cheddar. Stocks are low and are from Ontario.

EGGS—Receipts fall of considerably the first part in consequence. Besides a few local and eastern demand for British Columbia eggs has been taking Manitoba eggs freely, and it takes a lot to supply all this demand. For a while this week commission houses were getting 12c per dozen, commission basis, for fresh candled eggs, but as the floods which caused the shortage have now subsided and eggs are coming in more freely again, we quote last week's prices as only 10c per dozen, commission basis, 12c per dozen at country prices.

VEGETABLES—The market is quiet and prices low as follows: Potatoes, farmers' goods, delivered basis, 10c per bushel; carrots, 8c per bushel; beets, 60c per bushel; turnips, 30 to 35c per bushel; cabbage, 3c per pound; lettuce and radish, 10c per dozen bunches; celery, 90c per dozen bunches; onions, 4c per pound.

FRUIT—Market fresh meat is scarce, especially beef, which is holding stiff at 7 to 8c per pound, for city and for export. Veal is worth 8 to 8c, lamb, 8c, and hogs, 7 1/2c.

HIDES—The market is very quiet, and prices remain unchanged as follows: No. 1 black, 6c; yellow, Winnipeg, 6c; brown, 6c; No. 2, 5 1/2c; and No. 3, 4 1/2c. Kips for same prices. Sheepskins, 25c; goatskins, 25c; the slunks, 10 to 15c; horse hides, 20c to 35c.

Wool—Market nominal.

TALLOW—The local prices for tallow are 1 1/2 to 5c per pound.

SENeca ROOT—The market is expected to open in about three weeks.

LIVE STOCK.

CATTLE—Beef cattle are scarce and buyers are paying as high as 4 1/2c per pound for fat cattle in their regular trade. The range of prices is 4 to 4 1/2c according to quality, off cars for beef stockers are worth 8 1/2 to 9 1/2c per head for yearlings, and 18 to 20 for two year olds.

SHEEP—Sheep are not plentiful, and the regular quotation is in the neighborhood of 5c per pound delivered here.

HOGS—The market is steady at 4 1/2c per pound for choice packing hogs, delivered at Winnipeg.

MILK COWS—There is a good demand for new milkers at from \$35 to 45 each.

HORSES—There is a good steady demand for horses for both farm and carriage, and dealers find no difficulty in disposing of all they are being supplied. The market is being largely supplied from Ontario. There are some Montana horses selling. Prices continue high.

United States railroads are beginning to play a part in the reforestation of the lands. The Boston and Maine road recently bought 100,000 native seedlings to be planted this spring upon vacant lands owned by the company.

An advance of 25 per cent in fire insurance rates was put in effect this month in all States east of the Rocky Mountains. The advance applies on all classes of mercantile and on fire business buildings. Buildings of steel and brick are not affected.

Commercial travellers visiting Winnipeg are at great difficulty at present in securing suitable rooms in which to deposit their wares. An almost unprecedented number of druggists have come up from the east this year to look up business in the west and in fact these have been prevented from leaving their goods by the scarcity of sample rooms.

British Columbia
OF THE COMMERCIAL

British Columbia Business Review.

Vancouver, April 7.

The greatest activity has been in the shingle business since the passage of the act prohibiting the exportation of logs. It is estimated that \$450,000 has been spent in the erection of new mills since the passage of the act. In the first of January there were seventy machines at work on the mainland of the Pacific coast. Today there are 110 machines in operation to say nothing of the ten new mills in the Interior and those on Vancouver Island. It is estimated that at the present time the province is able to turn out 1,500,000 feet shingles per annum. The output of new mills who have more than doubled their capacity since the prohibition of export logs are besides the Island and Interior mills as follows: Cascade Shingle Company, Cook & Tait, Hastings Shingle Manufacturing Company, Royal City Planning Mill Company, Robertson & Hackett, Spivey, W. L. Tait, Canadian Shingle Company, Pacific Coast Shingle Company, E. H. Heaps & Co., T. Kirkpatrick, Two Mills, Harwood, J. G. Macdonald and Trading Company, Chilliwalk Shingle Manufacturing Co., Royal City Mills, Ltd., Westwood, J. J. West, A. B. Tait, Dominion Shingle Manufacturing Co., W. T. Farrell, McLaughlin's, etc.

At Vancouver wholesale market and feed remain quiet and unchanged. Prices of live stock are steady and have assumed normal prices owing to the attempt of Seattle and other ports to sell direct to the trade under going prices, having been discontinued. Local creamery butter is very scarce. Creamery is selling in San Francisco at 22 1/2 cents and can be laid down here at 20c. Grade of creamery is selling for 30c. There is another high class dairy article of Seattle, a creamery butter, which is such is bringing 27c in the local market. Not a great deal of the California butter is sold here. It will not keep the same as Manitoba or local butter. It is not made to keep and it is used mostly to fill in until Maine and local butter becomes more plentiful. Potatoes are very scarce and there is again a talk of famine. It seems almost impossible to secure Early Rose Potatoes, and many orders are now across the border have gone unfilled. Asparagus are scarce at 55c advance. Eggs are still very plentiful and are selling at 60c. Hens are at one cent and a half. Fruits are advancing in price.

Prices at Vancouver.

Social to The Commercial.

Vancouver April 12.

There has been a sharp advance in oranges. Local potatoes are hard to procure. Local milk prices are offering at 12c per box.

FEED—National Mills chop, 27c per ton; bran, 42c; shorts, 43c; oak meal, 35c per ton f.o.b. Vancouver, including duty and on imported stuff.

WHEAT—Manitoba \$2 per ton; Oregon wheat, 10c per ton.

FLOUR—Manitoba patent, per barrel, \$2.00; extra, \$1.95; Oregon, \$1.90 per barrel; Enderby patents, \$1.70.

HAIR—Fraser River valley, \$14.00 per ton; extra, \$15.00.

MEAL—Rolled oats, 90c; sack, \$2.30; two old sacks, \$2.50; 25 lb. sacks, \$2.35; 50 lb. sack, \$2.40; oatmeal in 50 lb. sacks, \$2.50; 100 lb. \$2.50; 50 lb. sacks \$2.35 per 100 lb.

LARD—100 lb. Steers, \$5.35 per 100 lb.; sheep, \$5 per 100 lb.; hogs \$5.00 to \$5.25 per 100 lb.

POULTRY—Turkeys, 15c per lb.; geese, 12c; ducks, 10c.

CURED MEATS—Beef, 90c; mutton, 1 1/2c; pork, 95c; veal, 90c; 100 lb. CURED MEATS—Hams, 15c; 150 lb.; bacon, 10c; hocks, 15c; rooks, 15c; 100 lb. long cured, 12c; 100 lb.

LARD—Tink, 12 1/2c; pork, 12c; tunc, 12c.

BUTTER—Local creamery, 30c; Manitoba, 28c; 25 lb. casks, 28c; Dairy, 15c; 25c; California creamery, 20c; 25 lb. casks, 20c; California, 20c per dozen.

CHEESE—Ontario cheese, 14c; Manitoba, same, 15c.

VEGETABLES—Potatoes, 15.00 per ton for locals, 25c for Ascheriffs; onions, red, 10c; white, 12c; cauliflower, 15c per doz; tomatoes, 25c.

FRUIT—Fruiters, 3c; apples, 10c; peaches, 10c; bass, 4c; whitening, 5c; soles, 5c; halibut, 6c; salmon, 7c; cod, 10c; crabs, 6c; oysters, 10c; smoked salmon, 10c; smoked halibut, 10c per lb.

GAME—Ducks, mallard, 75c pair, 50c; Wilson and Pintail, 90c per pair.

GREEN FRUITS—Lemons, 75¢ per 100; local apples, \$1.50; Oregon apples, \$1.50; 100 per box; bananas, \$2.75; 25c; citrus, navel, oranges, \$3.00; 25c; seedlings, \$2.00 per box; California rhubarb, \$2.00 per box; 15c; fiber, 11¢; 10¢; peannts, 70¢; Brazil, 10¢; walnuts, 10¢; per lb; coconuts, 90c per dozen.

GRAIN—Powdered, 10¢; and bar, 50c; Fortnump, 40c; granulated, 45c; extra, C, 45c; yellow, 44¢; 40c.

RYE—20 gal. barrels, 7 1/2 lb; 10 gal. kegs, 7 1/2; 5 gal. tins, 11 1/2 each; 1 gal. tin, 14 1/2 each; 1/2 gal. tins, 25¢ each of 25.

HARDWARE—Bar iron, base, 22¢; Horse shoe nails, discount, 10 and 10 per cent; horse shoes, keg 5c; nails, base price, cut 12 1/2; wire, 25¢; rope, Manila 1c; white lead, 7 1/2; putty, 3 1/2; barbed wire, 4 1/2 per 100 lb.; glass, first break 3 1/2.

British Columbia Notes.

Frank Springett, Jeweller, New Westminster, has assigned to John McConville & Co., Marble Bay, Texada Island, has assigned.

The East Kootenay Bottling Works of Cranbrook, has decided to establish a branch in Fernie.

Alderman Stein is selling out his grocery and bakery business at Station to Mr. Patterson.

Coward & Co. are opening a sash and door factory at Fernie. They have spent \$10,000 on a building and plant.

The Columbia River Lumber Co. have under way at Kukul an addition to their plant in the shape of a sash and door factory.

W. O. Robins and H. H. Brewer are planning a partnership for the purpose of carrying on a furniture store there.

The Golden News Era will cease publication on April 25. The editor says the publication of a newspaper in Golden has ceased to be a business proposition.

An agent has left Toronto for Vancouver to close up the consolidation of the salmon canneries of that province into the British Columbia Packers' Association.

Notice is hereby given that the partnership heretofore existing between Edward Logan and J. A. McKeerber, doing business as Edmonth, near 210th, H. Co. as lumbermen, has been dissolved by mutual consent. J. A. McKeerber will continue the said business, and will assume all liabilities.

The returns from the Vancouver custom house for the month of March, 1902, are as follows: Duty, \$27,550.00; other revenue, \$12,395.10; total, \$39,945.10. Imports, dutiable, \$204,981.00; imports, free, \$20,787.00; total, \$225,768.00. Exports, domestic, \$22,719.00; exports, foreign, \$3,480.00; total, \$26,199.00.

The following new companies have been incorporated under British Columbia laws: The Ashoka Coal Co., Ltd., The Bell Trading Co., Ltd., of Nelson; The Cedar Valley Improvement Co., Ltd., The Monarch Gold & Copper Mines, Ltd.; The Victoria & Vancouver Restoring & Contracting Co., Ltd., Turner, Boston & Co., Ltd.; The Empire Prairie Mining Co., Ltd.

The programme laid down by the executive committee for the British Columbia Fruitgrowers' Association for the current season's competition, in part, the sending of an exhibit of British Columbia fruit to the Western Horticultural Society's exhibition, to be held in Winnipeg on the 28th to 30th August, the bringing in of an expert fruit packer, and the sending of carloads of fruit to Manitoba and the Northwest from the different sections of British Columbia.

NOTICE OF DISSOLUTION OF PARTNERSHIP.

Notice is hereby given that the partnership heretofore carried on by Robert Scott and William Chambers, at the town of Hamilton in the Province of Manitoba, under the firm name of Scott & Chambers, has been dissolved by mutual consent.

All debts and accounts due the late firm are to be paid by William Chambers, and all accounts owing to them will be settled by William C. Chambers, who will continue the business heretofore carried on by the partnership. Dated at Hamilton, this 10th day of April, A. D. 1902.

THE GALVANIZING AND SHEET METAL COMPANY LIMITED

"EASTLAKE"

FOR THE ROOF

There's trust economy in choosing

"EASTLAKE" STEEL... SHINGLES

They last indefinitely. Are fire, lightning, rust and leak-proof. Fit together perfectly by means of their special patented side lock, can't possibly work apart. GALVANIZED "EASTLAKE" are heavily coated on both sides with all the galvanizing material that will adhere to them. PAINTED "EASTLAKE" are thoroughly covered on both sides with Sherwin-Williams best paint. "Eastlakes" have been used for years of service in all climates, everywhere giving thorough, lasting satisfaction. Write and let us give you further information.

TORONTO CANADA

THOS. BLACK, Selling Agent, 131 Bannatyne Ave. WINNIPEG.

British Columbia Smelters.

The New York Sun of February 3 contains the following special correspondence regarding British Columbia smelters and Canadian coal and coke...

The wet ores indispensible as fluxes are on the Canadian side, but as yet the dry ores required to give the resultant bullion sufficient value to recover the cost have not been discovered...

The transportation interests, of which J. Hill is the moving spirit, also bring an influence to bear in favor of smelting on the Canadian side...

The Grand Forks smelter, an American enterprise, on the Canadian side, will use Canadian wet ores to flux the dry ores from many tributary American points...

Smelting enterprise on the Canadian side has solved the problem, and the branch Great Northern railway, which will pick up and assemble the ores from many points...

The railway now under construction from the Crow's Nest Pass coal region to the coast is an international boundary, with a branch line from Jemseg, Mon., on the Great Northern railway, will bring coal and coke from the Crow's Nest Pass into active competition with American mines...

It is evident from this that the Canadian market and competition with all its enterprise will have formidable rivalry to face as the coal measures of the Crow's Nest Pass are developed. The coal of the Crow's Nest Pass is shown by analysis to be of a quality far superior to that of the best explored deposits in Washington and Montana...

Montréal Gazette, April 18: In local export live stock circles business is quiet. Much of the year's crop has been shipped and it is feared in some quarters a surplus of live stock is likely to be on hand...

Toronto Wholesale Trade.

Dry Goods—Toronto, April 12. Dry goods—Toronto, April 12. Values are firm and some further advances in domestic cottons expected...

Hogs and Hog Products.

Dressed hogs are quiet. Higher farmers' lots are now worth \$8.75. Pork—Canada short cut, \$21.50 to \$22.00 heavy mess, \$21.00.

Toronto Grain and Produce.

The grain markets are quiet. Winter wheat is at 115c. Manitoba wheat is 1 1/2c loss. Creameries are in fair supply and selling freely...

Montreal Grain and Produce.

Wheat—No. 1 spring wheat at 87c. Flour—Manitoba patent, \$3.00 to \$4.10. Butter—Creamery, finest, from 22 western dairies, 10 1/2 to 11c.

Montreal Live Stock Market.

Receipts at the east end abattoir: 100 calves, 80 sheep, 10 lambs, and 1,000 hogs. The feature of the trade continues to be the strong feeling in the market for cattle, and prices are steadily advancing...

THURSDAY'S MARKETS.

Receipts at the east end abattoir yesterday were 350 cattle, 100 sheep and lambs, and 1,000 hogs. Best brought 5 1/2 to 6 1/4c, calves and pigs at \$1.00 to \$1.25 per cwt.

Toronto Live Stock Market.

Receipts at the stock market yesterday were 100 cars, including 150 cattle, 277 sheep and lambs, and 1,000 hogs. Export cattle—Were selling at very high prices, choice ones at \$1.00 per cwt.

are only steady at \$4 to \$4.25 per cwt.
 Sheep and Lambs—Were steady, sheep at \$2.50 to \$4 per cwt for export ewes and \$4.50 to \$5.75 per cwt for yearling lambs. Spring lambs at \$2 to \$5 each.
 Hogs—Hogs were easier. Choice sows sold at \$6.10 per cwt and lights and fat at \$5.00 per cwt.

FRIDAY'S MARKETS.
 Toronto, April 12.—Receipts at the stock market yesterday were 45 cars, including 3,000 head of lambs and 1,500 hogs.
 Export cattle were in good demand and firm at 3 1/2 to 5 1/2c per pound, pickled and salted cattle were stronger, pickled lots selling at 5 1/2 to 5 3/4c per pound. Sheep were the same as on Tuesday. Yearling lambs \$4.50 to \$5.85 per cwt. Hogs same as on Tuesday.

Chicago Trade Prices.
 Chicago, April 7.—Closing prices for wheat: May 7 1/4 to 7 3/4; July 7 1/2 to 7 3/4; Sept. 7 1/2 to 7 3/4. Corn: May 30 1/2 to 31; July 30 1/2 to 31; Sept. 30 1/2 to 31. Pork: May 16 1/2 to 17; July 16 1/2 to 17; Sept. 16 1/2 to 17. Lard: May 10 1/2 to 11; July 10 1/2 to 11; Sept. 10 1/2 to 11. Eggs: May 15 to 16; July 15 to 16; Sept. 15 to 16.

Chicago, April 10.—Closing prices for wheat: May 7 1/4 to 7 3/4; July 7 1/2 to 7 3/4; Sept. 7 1/2 to 7 3/4. Corn: May 30 1/2 to 31; July 30 1/2 to 31; Sept. 30 1/2 to 31. Pork: May 16 1/2 to 17; July 16 1/2 to 17; Sept. 16 1/2 to 17. Lard: May 10 1/2 to 11; July 10 1/2 to 11; Sept. 10 1/2 to 11. Eggs: May 15 to 16; July 15 to 16; Sept. 15 to 16.

Chicago, April 12.—Closing prices for wheat: May 7 1/4 to 7 3/4; July 7 1/2 to 7 3/4; Sept. 7 1/2 to 7 3/4. Corn: May 30 1/2 to 31; July 30 1/2 to 31; Sept. 30 1/2 to 31. Pork: May 16 1/2 to 17; July 16 1/2 to 17; Sept. 16 1/2 to 17. Lard: May 10 1/2 to 11; July 10 1/2 to 11; Sept. 10 1/2 to 11. Eggs: May 15 to 16; July 15 to 16; Sept. 15 to 16.

Chicago, April 12.—May wheat opened at 72 1/2c and ranged from 72c to 73 1/2c. Closing prices were: Wheat—April, 72 1/2c; May, 73 1/2c; July, 75 1/2c to 76c; Dec., 74 1/2c. Corn—April, 61 1/2c; May, 61 1/2c; July, 61 1/2c to 61 3/4c; Dec., 48 1/2c. Oats—April, 41 1/2c; May, 42c; July, 41 1/2c.
 Pork—April, \$16.72; May, \$16.77; July, \$16.87.
 Lard—April, \$9.75; May, \$9.75.
 Eggs—April, \$9.05; May, \$9.07.

New York Wheat.
 New York, April 7.—Closing wheat, May 7 1/4; July 7 1/4; Sept. 7 1/4.
 New York, April 8.—Closing wheat: May 7 1/4; July 7 1/4; Sept. 7 1/4.
 New York, April 9.—Closing wheat: May 7 1/4; July 7 1/4; Sept. 7 1/4.
 New York, April 10.—Closing wheat: May 7 1/4; July 7 1/4; Sept. 7 1/4.
 New York, April 12.—May wheat closed at 79 1/2c, July 79 1/2c.

Minnesota Wheat.
 Minneapolis, April 7.—Closing prices for wheat: May 7 1/4 to 7 3/4; July 7 1/2 to 7 3/4; Sept. 7 1/2 to 7 3/4. Corn: May 30 1/2 to 31; July 30 1/2 to 31; Sept. 30 1/2 to 31. Pork: May 16 1/2 to 17; July 16 1/2 to 17; Sept. 16 1/2 to 17. Lard: May 10 1/2 to 11; July 10 1/2 to 11; Sept. 10 1/2 to 11. Eggs: May 15 to 16; July 15 to 16; Sept. 15 to 16.

Minneapolis, April 11.—Closing prices for wheat: May 7 1/4 to 7 3/4; July 7 1/2 to 7 3/4; Sept. 7 1/2 to 7 3/4. Corn: May 30 1/2 to 31; July 30 1/2 to 31; Sept. 30 1/2 to 31. Pork: May 16 1/2 to 17; July 16 1/2 to 17; Sept. 16 1/2 to 17. Lard: May 10 1/2 to 11; July 10 1/2 to 11; Sept. 10 1/2 to 11. Eggs: May 15 to 16; July 15 to 16; Sept. 15 to 16.

Duluth Wheat.
 Duluth, April 7.—Closing wheat: May 7 1/4 to 7 3/4; July 7 1/2 to 7 3/4; Sept. 7 1/2 to 7 3/4. Corn: May 30 1/2 to 31; July 30 1/2 to 31; Sept. 30 1/2 to 31. Pork: May 16 1/2 to 17; July 16 1/2 to 17; Sept. 16 1/2 to 17. Lard: May 10 1/2 to 11; July 10 1/2 to 11; Sept. 10 1/2 to 11. Eggs: May 15 to 16; July 15 to 16; Sept. 15 to 16.

Liverpool Wheat.
 Liverpool, April 11.—Close: Wheat spot No. 1 red western winter, no stock; No. 1 northern spring steady at 68 1/2; No. 1 California quiet at 68 1/2. Futures: No. 1 red western winter, May 58 1/2; No. 1 northern spring, May 58 1/2.
Winnipeg Closing Wheat.
 No. 1 hard cash wheat closed Saturday at 71 1/2c, No. 1 northern at 72c, and 2 northern at 69c.

The Weather.
 The week opened with a very cold spell, which set in on Sunday, moderating on Monday, and clearing on Tuesday. The temperature was moderate. There was a little snow on Tuesday. The wet condition of the soil in most sections of the country has prevented the farmers from getting started with their seedling, and continued dry weather is greatly desired.

LIVERPOOL CATTLE MARKET.
 Special to The Commercial.
 Liverpool, April 11.—Canadian cattle quoted unchanged at 13 1/2 to 14 per pound, estimated dressed weight.
LONDON SUGAR MARKET.
 Special to The Commercial.
 London, April 11.—April option unchanged at 68 1/2d.
LIVERPOOL CHEESE MARKET.
 Special to The Commercial.
 Liverpool, April 11.—Finest Canadian colored, September-October, 54 to 55s; white, 53s to 54s.

Tenders.
 Tenders for the purchase and removal of the store buildings numbers 208, 370 and 372 Main street, Winnipeg, will be received April 24, by Porter & Co.
 Tenders will be received until 9 p. m., April 19, by J. Griffith, for the various trades for one or two double houses, or for each house complete, to be built in Port Rouge.

Tenders will be received by Arthur Stewart, Winnipeg, for the erection of about 325 rods of wire fencing, and undergrowth for 200,000 Mounties, on the grounds of the Elmwood Cemetery Company, until noon of Tuesday, the 15th inst.
 Caldwell & Co., of the Virden Nurseries, has received an order from the Dominion government forestry department for 200,000 Mounties, maple seedlings and 60,000 Russian poplar trees.

The Changing Season.
 Mrs. Hatteroon—What! You've had fourteen cools in three months?
 Mrs. Catergrew—And I didn't blouse any of them.—Life.

Western Business Items.
 Craig Bros. are opening a store at Franklin, Man.
 The first regular Canadian Pacific Railway steamer for Fort Willa will leave Owen Sound on April 19. It is rumored that the Great Lakes company contemplates building a large line of elevators in Manitoba this year.

Scott & Chambers, general mechanics, Hamilton, Man., have dissolved partnership. The business will be continued by Wm. C. Chambers.
 Wm. Chambers, of Mantou, who is moving to Delaware to engage in the hardware business, was presented with an address and a gold-headed cane.

A. R. Childs, general merchant, Petawago, Man., had his premises and stock destroyed by fire on Wednesday of last week. In addition to the building and a stock valued at \$500, the fire destroyed a sum of money which Mr. Childs held for two leading grain concerns.

The Winnipeg Machinery and Supply Company has just received the contract for supplying the town of Grand View, Man., with a waterworks plant furnished by gasoline power. The plant consists of a White gasoline engine and Globe triplex pump, with a capacity of 100 to 125 gallons per minute.
 John Mather, of Ottawa, who is largely interested in Lake of the Woods and other receiving industries, was in Winnipeg this week. He stated that the Lake of the Woods mill at Iroquois has ordered a considerable amount of new machinery, which would increase the capacity to over 4,000 barrels. The saw barrel factory would be doubled in its capacity, and would turn out 1,000 barrels a day.

T. J. McBride, formerly manager at Winnipeg for the Massey-Harris Co., and latterly for E. C. Company in Australia, has resigned his position, and retires to private life. He will take up residence in Ontario, California.
 John B. Wilson, manager of the Imperial Bank of Canada, at Prince Albert, Sask., has been elected a member of the Prince Albert board of trade, and in Winnipeg this week on his return from Ottawa. Mr. Wilson has been visiting as a delegate from the board of trade in connection with importation of railway machinery and general development of the district. Mr. Wilson states that there are good openings for the development of the fish industry, cold storage, pork packing, foundry, tannery, laundry, river navigation, etc., in this town.

On Yorkton Plains.
 Mr. Thos. Meredith, one of the pioneer business men of Yorkton, is at the Leland. Mr. Meredith speaks in glowing terms of the progress being made in the settlement of his district. New settlers, with their effects are coming in every day and taking up farm work sections, and clearing the land in the surrounding country has been brought up by U. S. land grants and these men are not waiting for wandering immigrants to locate but are engaged in bringing in a good class of people from fifty miles away. Mr. Meredith states, are carefully watching the movements of the Doukhobors in the village settlement northwest of Yorkton. Mr. Eklington, of Philadelphia, is at present among these wandering homesteaders. The government has given these people until May 1 to take out their entries and these men are not ready to be thrown open to the general public and considerable scrip is now ready to be clipped on any vacancy. The Doukhobors are holding out against the land.
 Mr. Meredith is in the city to purchase horses, which he finds a scarce article.

It Probably Was.
 "Higan says he has had his house returned during his wife's absence."
 "As a surprise to her?"
 "Oh, no. As a shock!"—Detroit Free Press.

A Tryal.
 Inevolent Gentian—My little boy, give you no better way to spend this beautiful Sabbath afternoon than by standing in front of the gate idling away your time?
 Boy—Ain't idling away my time. There's a pa-iss inside with my sister who is having my stepsons an hour to watch for a fer—'til-Hits.

Pointed Paragraphs.
 Some parents use their children to hang out clothes on.
 Some use them so that Friday is just as uncleany as any other day.
 A bird in the hand may be worth two in the bush.
 Introducing a happy man to a pessimist is like shaking a red rag at a bull.
 Blessed is the woman whose husband can always find in the bureau drawer the thing he is looking for.
 Pessimism is the zero mark of love's thermometer.

Some Horse Nail Pointers:

The 'C' brand Horse nails are not the lowest priced, but they are the cheapest—that is if you will take quality, pattern and durability into consideration. It is an accepted truth which has found expression in the saying "the best are the cheapest." To assert that the 'C' brand Nails are the best is only to repeat the experience of the hardware trade and farmers who have bought and used them for the past thirty-seven years. They are the Standard Horse Nails of Canada, because they are the best. No other Horse Nails made in Canada have ever been sold at a better price than the 'C' brand. Why?

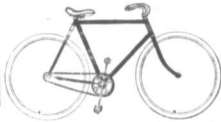
Because there were none better. If you want the best article, either Horse Nails or anything else, you have to pay a price corresponding to its value. The best cost more to produce. Our 'C' brand costs more to make, because we do not admit anything of a cheap nature into their composition, or the process of manufacture. The best material that is known or used in the world for the manufacture of Horse Nails forms the basis of the 'C' brand. The "hot-forged" hammered process is the only one we use, because it thoroughly hammers a Nail from the solid rod or bar of Swedish charcoal-toughened steel, which we use exclusively, and is made specially for our works in Canada.
 If other brands were sold at even seventy-five cents a box lower than our 'C' brand, it would only reduce the cost of the 32 nails used in shoeing a horse—one cent. There is no economy in using cheap Nails. Order the 'C' brand and satisfy yourselves and your customers.

All the leading wholesale firms in Winnipeg have them for sale or will obtain them for you; if not, send your orders direct.

Canada Horse Nail Company
 MONTREAL

We may not be represented in your town. If not a postal will bring prices and terms on the best line of Bicycles on the market, viz.:

**Brantford
Cleveland**



**Massey-
Harris
Welland Vale**

All kinds of repairing. Large stock of sundries and parts always carried. Brantford Red Birds now on exhibition at our Retail Store, 484 Main Street.

CANADA CYCLE & MOTOR CO., LTD.
WINNIPEG, MANITOBA.

SEEDS

Merchants for 1902

PUSH THE Steele-Briggs Seeds

They have the four points for success in your seed business, viz.:

- 1st Always Reliable.
- 2nd Most Widely Advertised.
- 3rd Most Attractively Got Up.
- 4th Give a Good Round Profit.

See our big daily and weekly "ads." They don't forget the merchant. Please return the compliment by pushing our seeds, whenever possible, from box or catalogue.

We handle all seeds in all quantities, and cheerfully answer any written, or wire enquiries.

THE STEELE-BRIGGS SEED CO. Ltd
Toronto

SEEDS SEEDS

The Northwest Seed and Trading Co., Ltd., have opened with a complete stock of

Fresh Garden, Field and Flower Seeds

Stock selected with a special view to the requirements of this market, our Mr. Chester having had over 20 years experience in the seed trade here.

NORTHWEST SEED & TRADING CO., LTD.
505 Main St. Winnipeg.

PLEASE NOTIFY.

Subscribers to The Commercial are requested to notify the office of any irregularity in the receipt of their paper.



LILY WHITE GLOSS STARCH

in beautiful colored Toy Trunks, with real lock and key.
6 lbs. each. A lightning Seller.

The Brantford Starch Works
LIMITED
BRANTFORD, ONT.



**"The
Man
With
The
Hoe"**

The dealer who sells our cigars is the one who gets the dollars.

We produce the finest CLEAR HAVANA goods on the market—made by Cubans.

They are PERFECT cigars.—full of flavor, fragrant and pure. Our Leading brands:

**"FLOR DE TOM LEE" "The T.L."
"LEE'S PREMIER" "ROSA LINDA"
"MAGNIFICOS" "LEE'S PERFECTOS"**

ARE YOU THE MAN WITH THE HOE?

WESTERN CIGAR FACTORY

T. LEE, Prop.

WINNIPEG

W. R. TALBOT & CO.

239 PORTAGE AVENUE.

DEALERS IN

**Wall Papers
Pictures and
Frames**

All orders, either from the country or city, receive our most careful attention.

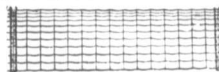
Spring Lines

Now in stock, a full range of Spring Goods, Clothing, Furnishings, Small-ware, Fancy Goods, etc. We call attention especially to our RUBBER COATS, which are of good quality and marked low.

Mail orders will receive prompt attention.

EASTERN CLOTHING HOUSE

J. GENSER, Prop.
223 Alexander Ave. Winnipeg.



The Page

**COILED SPRING
WOVEN WIRE FENCE**

When a bull or a runaway team run into a wire fence, or two-legged animals climb over it, how much benefit is a quarter inch cross wire than't it a damage? Think of it. Buy the "Page" and get the best. No other wire like it. For further particulars apply to

ROSS & ROSS
General Agents, Winnipeg.

"5 in 1"

You are requested to call or send for samples of the "5 in 1" LETTER ENVELOPE, SAVES LABOR, TIME AND EXPENSE. Used extensively by all Banks, Merchants, etc., throughout the Dominion. Used in the city by the PROVINCIAL GOVERNMENT, Alloway & Champlin, A. J. Brown & Co., Forrester & Hatcher, E. Knight & Co., G. F. Stablesford, Dr. Leeming, Dr. English, Winnipeg Coal Co., and a host of others.

"5 in 1" LETTER ENVELOPE CO.

TORONTO.

Manager for Winnipeg,
LEWIS SAMUELS.



W. J. Blundell.

The accompanying half-tone engraving is from a photograph of W. J. Blundell, who for the past four years has been city traveller at Winnipeg for J. V. Griffin & Co., pork packers and provision merchants. This is not the first time that our readers have seen this cut, but we republish it now for the reason that Mr. Blundell has just been promoted to a more responsible position in the service of the Griffin Company. Hereafter he will travel the Kootenay country for them, with headquarters at the Nelson branch. Mr. Blundell came to Winnipeg from St. Thomas, Ontario, to take the position he has held here, and has made many friends in Winnipeg during his stay. His removal will be greatly regretted by these.

Commercial Men.

Rod. McLeenan arrived from Montreal this week and will work his usual territory here.

J. H. Glass, who is representing J. S. Langlois & Co. in the West again this year, arrived in the city this week on his fall trade trip. He will cover his usual territory through to the coast.

H. W. Gerhardt was arranging his samples at his rooms in the McIntyre block, Winnipeg, this week, for his western trip for Kyle, Chesborough & Co. Mr. Gerhardt will take British Columbia, W. B. Herbert takes the main line and Chas. Hanley will do Manitoba branch lines for this house.

C. H. Filles has returned from Europe, where he attended the fur sales, and will represent his house in the West as usual this season. The firm with which he has been for some years—Waldron, Drouin & Co., are forming a new company, in which Mr. Filles is taking an interest. Mr. Filles is now in the West.

T. H. Wardell, of Toronto, who formerly represented R. F. McKinnon, has accepted a position as western representative for the W. R. Brock Co., Ltd., taking the territory covered by the late T. B. Devaney. Mrs. Wardell, who will also go with him on his trip west, is with him. On their return from the west they will take up their residence in Winnipeg.

R. H. Gallagher and G. M. Newton, of S. Greenfields, Son & Co., were busy at their rooms in the McIntyre block, Winnipeg, preparing samples for the road. A. C. Russell is already out for the same house. Mr. Gallagher reports that they have experienced a good trade for the manufacturers of the American Silk Waist Co., which they have handled here for some time.

Ocean Grain Freights.

Since this day week there has been something of a lull in the demand for ocean grain room from this port for spring shipment, says the Montreal Gazette, in consequence the market has been quieter and only a moderate amount of business has been done. There has been some enquiry for space from Quebec, and we understand that several small lots have been booked. The tone of the market, however, rates steady, and rates show little change. The asking rates are as follows: Liverpool, 1s 3d; May, London, 1s 6d to 1s 7 1/2d; May, Glasgow, 1s 3d; May, Avonmouth, 2s 3d; June, Manchester, 1s 6d to 1s 6d; June, Hamburg, 1s 6d; May and June, Antwerp, 1s 6d; May, Belfast, 1s 6d; May, Dublin, 1s 10 1/2d; May, Leith, 2s 3 1/2d; Cardiff, 2s 5d; and Rotterdam, 1s 6d. May, with reference to the New York market business has also been quiet, and rates show little change as compared with a week ago. Liverpool, 1 1/2d; London, 1 1/2d; Glasgow, 1 1/2d; Newcastle, 2 1/2d; Antwerp, 1 1/2d; Rotterdam, 3 1/2d; Bristol, 2 1/2d; Leith, 2 1/2d; Hull, 2 1/2d; Bremen, 20 pfgs.; Hamburg, 22 1/2 pfgs.; picked ports, to U. K. or continent, 1s 6d to 1s 6 1/2d; and Cork for orders, 2s 1 1/2d to 2s 3d.

The strike of coal miners at Altoona, Pennsylvania, inaugurated April 1, which involved 10,000 men has been settled in favor of the men.

LEADING
COMMERCIAL HOTELS

WINNIPEG

HOTEL LELAND.

Headquarters for commercial men.
CITY HALL SQUARE

DRYDEN, ONT.

DRYDEN HOTEL.

A. R. HUTCHINSON, Prop.
Headquarters for commercial and mining men and the general public.

RAPID CITY.

QUEEN'S HOTEL.

THOS. EVOY, Prop.
Headquarters for commercial travellers. Free bus meets all trains.

BIRTLB

ROSSIN HOTEL.

B. FENWICK, Prop.
Good accommodation; telephone connection with the station; sample rooms; inside closet. Livery in connection.

TREHERNE

LELAND HOTEL.

W. F. LEE, Prop.
First-class accommodation for commercial travellers.

GLENBORO

QUEEN'S HOTEL.

M. E. NEVINS, Prop.
Best hotel on the Glenboro branch. Three large first-class sample rooms.

NAPINKA

HOTEL LELAND.

B. HALLONQUIST, Prop.
First-class in every department. Sample rooms every convenience for the travelling public. Opposite C. P. R. depot.

DELORAIN

PALACE HOTEL.

LAIRD & McGARVEY, Props.
New building, new furnishings, furnace heating, acetylene gas. First-class. Large sample rooms.

MACREGOR, MAN.

THE STANLEY HOUSE.

E. WATSON, Prop.
First-class accommodation for travellers. Commodious sample rooms. Livery and feed stable in connection. All kinds of teaming attended to.

ELKHORN

HOTEL MANITOBA.

W. J. DIXON, Prop.
New building, new furnishings, furnace heating, acetylene gas. First-class. Large sample rooms.

FLEMING

WINDSOR HOTEL.

W. GEO. CLEVERLY, Prop.
New management. Rates R.R. Renovated and re-furnished. Commodious sample rooms. Heated by hot air. Livery and feed stable in connection. Inside closet.

ROSTHERN

OCCIDENTAL HOTEL.

H. A. McEWEN, Prop.
New house. Up-to-date appointments

RED DEER, ALTA.

ALBERTA HOTEL.

BEATTY & BRINDLE, Props.
C. and E. dining hall, good sample rooms and every accommodation for commercial travellers and the general public.

WETASKIWIN, ALTA.

CRITERION HOTEL.

F. M. HAMILTON, Proprietor.
New buildings, new furnishings, hot and cold baths, heated by furnace and lighted with gas; good sample rooms

STRATHCONA

STRATHCONA HOUSE.

W. H. SHEPPARD, Prop.
First-class. Opposite depot.

EDMONTON

ALBERTA HOTEL.

JACKSON & GRIERSON, Proprietors.
Sample rooms. Free bus. Livery in connection.

MACLEOD

MACLEOD HOTEL.

THOS. WILTON, Prop.
Good sample rooms and every accommodation for commercial travellers and the general public. Rates \$2.00 per day. Bus to and from all trains.

PINCHER CREEK

HOTEL ARLINGTON.

MITCHELL & DOBBIE, Props.
New buildings, new and commodious bedrooms, parlors, bathrooms and sample rooms. Newly furnished. Heated throughout by hot air; lighted by gas electric bells in every room. Cidms second to none; and the best stock of wine, liquors and cigars in Alberta. Miss Mitchell, Manager.

NEW WESTMINSTER, B. C.

HOTEL COLONIAL.

J. E. INSLY, Proprietor.
Special attention given to commercial travellers. Charges moderate.

VANCOUVER

HOTEL LELAND.

R. DOWSWELL, Proprietor.
Refurnished and remodelled. Rate \$2.00 to \$2.50 per day. Long distance phone. One block from C. P. R. depot and steamboat wharves. W. E. Orge, Manager.

VICTORIA

HOTEL VERNON.

JAS. PATTERSON, Mgr.
Headquarters for commercial and business men. Free bus and sample rooms

KAMLOOPS

GRAND PACIFIC HOTEL.

F. A. BARNHART, Proprietor.
The best hotel in Kamloops. Ample accommodation.

GREENWOOD, B. C.

IMPERIAL HOTEL.

GRAHAM & PARRY, Proprietors.
Headquarters for commercial travellers and all business men.

PHOENIX, B. C.

THE VICTORIA HOTEL.

B. C. Hotel Co., Ltd., B. TOMKINS, Mgr.
Electric bells, electric lighted, furan heated, finest liquors and cigars. Sample rooms.

FALL SAMPLES
*
SEASON 1902
*
NOW READY

Our Mr. D. K. Book and Mr. Robt. Balmer are now in the West with a complete range of Men's, Youths', Boys', and Children's ready-to-wear Clothing. It will pay you to wait and see their samples before placing your order.

MCKENNA, THOMSON & CO.

423, 425, 427, 429 St. James Street

MONTREAL

Permanent Sample Room—Room 6 Sanford Block, Winnipeg

WINNIPEG PRICES CURRENT

Trade With Great Britain.

London, April 7.—The board of trade March returns show that British trade from Canada increased as follows during the past three months: cattle, 127,000; wheat, 550,000; flour, 20,000; bacon, 114,000; hams, 121,000; butter, 233,000; mawn wood, 112,000.

The following decreases are noted: Sheep and lambs, 14,000; oats, 298,000; pork, 130,000; cheese, 122,000; 100 sorted tissues, 25,000; 125,000; 112,000; hewn wood, 28,000. The imports of canned salmon totalled 115,000, canned lobster, 28,000.

The exports to Canada increased as follows: Wood, 12,000; cotton, piece goods, 11,000; linen, piece goods, 25,000; silk, 17,000; woolen tissues, 25,000; 15,000; hardware, 11,000; pig iron, 42,000; bar iron, iron sheets and boiler plates, 12,000; cast and wrought steel, 22,000; unwrought steel, wrought iron, 22,000; unwrought steel, wrought iron, 22,000; and exports decreased: Spirits, 115,000; jute, piece goods, 11,000. Rails totalled 250,000; wearing apparel, waterproofed, totalled 20,000; not waterproofed, 170,000.

ESTABLISHED 1874 CARBOTHERS, BROCK, JOHNSTON & DRY

Insurance, Financial, Real Estate Agents

ESTATES MANAGED MONEY INVESTED

J. & J. TAYLOR SAFES AND VAULT DOORS.

461 MAIN STREET - WINNIPEG

TODHUNTER, MITCHELL & CO

Importers and Manufacturers High Grade Coffees High Grade Spice

"Not Excellent" Cocoa "Most Excellent" Chocolates Baking Powders Flavouring Extracts, Etc.

TORONTO - ONTARIO

LEITCH BROS.

Oak Lake

"Anchor Brand" Flour

FROM NO. 1 HARD WHEAT.

Bran, Shorts and all kinds of Chopped Feed and Grain.

ADDRESS OAK LAKE, MAN.

GROCERIES.

Prices to retail dealers for ordinary lots, with usual discounts for cash or large lots.

Table listing various grocery items such as Apples, Peaches, Pears, Plums, Pumpkins, Raspberries, Strawberries, Tomatoes, Salmon, etc., with their respective prices per case or per bushel.

Canned Meats.

Table listing canned meats including Corn beef, Lunch tongue, Pig feet, Roast beef, Chicken, Duck or turkey, etc., with prices per case.

Coffee.

Table listing different grades of coffee with prices per bushel.

Cereals.

Table listing various cereals like Soft pearl sack, Rolled oatmeal, Standard oatmeal, Bran, etc., with prices per sack.

Cured Fish.

Table listing cured fish products such as Finnan Haddie, Bonedown Hake, etc., with prices per bushel.

Dried Fruits.

Table listing dried fruits including Currants, Filletras, Raisins, Dates, Figs, etc., with prices per bushel.

Meats.

Table listing various types of meat such as Beef, Pork, Mutton, etc., with prices per bushel.

California Evaporated Fruits.

Table listing California evaporated fruits like Peaches, Apples, etc., with prices per bushel.

Table listing prunes and other dried fruits with prices per bushel.

Matches.

Table listing various brands of matches with prices per case.

Nuts.

Table listing different types of nuts such as Brazil, Pecan, Walnut, etc., with prices per bushel.

Syrup.

Table listing different grades of syrup with prices per bushel.

Sugar.

Table listing various types of sugar including Extra standard, Powdered, etc., with prices per bushel.

Salt.

Table listing different grades of salt with prices per bushel.

Spices.

Table listing various spices like Allspice, Cloves, Pepper, etc., with prices per bushel.

Tea.

Table listing different grades of tea with prices per bushel.

Tobacco.

Table listing various types of tobacco with prices per bushel.

Cigarettes.

Table listing different brands of cigarettes with prices per bushel.

Smoking.

Table listing various smoking products like Virginia Gold, etc., with prices per bushel.

Table listing Golden Plug, Royal Oval, etc., with prices per bushel.

Wooden Ware.

Table listing various wooden ware items like Pails, Tubs, etc., with prices per dozen.

CURED MEATS, ETC.

Table listing cured meats such as Lard, Butter, etc., with prices per bushel.

Smoked Meats.

Table listing smoked meats like Hams, Breakfast bacon, etc., with prices per bushel.

Dry Salt Meats.

Table listing dry salt meats such as Long clear bacon, etc., with prices per bushel.

Barrel Pork.

Table listing barrel pork with price per bushel.

Meat Sundries.

Table listing various meat sundries like Sausage, etc., with prices per bushel.

DRUGS.

Table listing various drugs and chemicals with prices per bushel.

LEATHER.

Table listing different types of leather with prices per bushel.

SMOILING.

Table listing various smooiling products like Virgin Gold, etc., with prices per bushel.

Bag sheepskin.

Table listing bag sheepskin with price per dozen.

PERRIN'S

STERLING CREAM SODAS
GRAHAM WAFERS
STERLING CONFECTIONERY
EXTRA FINE CHOCOLATES

D. S. PERRIN & COMPANY, Limited, LONDON, ONT.

MANUFACTURERS OF BISCUITS AND CONFECTIONERY

Winnipeg Warehouse—327 Notre Dame Avenue

Write for Quotations

The British Columbia Mills Timber and Trading Co.

MANUFACTURERS OF

HEAD OFFICE, VANCOUVER, B.C.

FIR AND CEDAR LUMBER

SHINGLES, DOORS, WINDOWS, ETC.

Winnipeg Office: JAMES A. OVAS, Manager

Mills:

HASTINGS SAW MILL, Vancouver
ROYAL CITY MILL,
ROYAL CITY HILL, New Westminster
MOODYVILLE MILL, Burrard Inlet

ACETYLENE

THE 20TH CENTURY LIGHT



The Ontario Double Gas burner makes up all gas from the lights up. Guaranteed to give satisfaction. Sold on trial. Shaffer Burners for sale.

Northwest Acetylene Gas Co.
312 Princess St., Winnipeg.

THE SOVEREIGN BANK OF CANADA

Notice is hereby given that a meeting of the subscribers to the stock of the Sovereign Bank of Canada will be held at No. 14 King street, west, in the city of Toronto, on Wednesday, the 23rd day of April, 1902, at the hour of twelve o'clock noon, to determine the day upon which the annual general meeting of the shareholders will be held, and to elect such number of directors, not less than five, or more than ten, as they may think necessary, to hold office until the annual general meeting in the year next succeeding their election; and also for the further purpose of passing by-laws to regulate the following matters incident to the management and administration of the affairs of the Bank, that is to say:

The record to be kept of proxies, and the time within which proxies must be produced and recorded prior to a meeting in order to entitle the holder to vote thereon.

The quorum of the board of directors, which shall not be less than three, their qualification subject to the provisions of the Bank Act.

The method of filling vacancies in the Board of Directors, whenever the same occur, during each year, and the time and proceedings for the election of directors in case of a failure of any election on the day appointed for it.

D. M. STEWART,
Secretary and General Manager.
By order of the Provincial Board.

P. D. ROE, President.

LUMBER

Telephone
777

Call and see my fine stock of SPRUCE; also PINE, FIR, CEDAR, etc. Bottom prices.

JNO. M. CHISHOLM

General Manager.
Formerly Mgr. Rat Portage Lumber Co.

YARD:

Cor. Princess and Fonseca Sts., Winnipeg.
Formerly British Columbia T. & T. Co.,
Yard.

J. D. McARTHUR

J. M. PERKINS

WHOLESALE.

SEEDS
SEED DRILLS
ONION SETS

Commission Seed Boxes. Trade List
Now Ready.

221 MARKET STREET, WINNIPEG, MAN.

The only up-to-date manufacturers in Western Canada.

**RUBBER
STAMPS**

AND SUPPLIES

THE MOORE PRINTING CO. LTD.
210 McDermott St., Winnipeg

The Canadian Pacific Lumber Company Limited

MANAGER
PORT MOODY, B.C.

CAPACITY: LUMBER—60,000 feet per Day; LATH—50,000; SHINGLES—150,000.

We have the largest-dry kiln capacity of any mill in B.C.; also the largest amount of sheds, and these are well stocked with Manitoba lumber. We have seven planers and are prepared to ship promptly. We understand the requirements of Manitoba dealers. Send to us for your next car. HENRY BYRNES, Selling Agent, Winnipeg.

Manufacturers of and Wholesale
Dealers in all Classes of
British Columbia

**LUMBER, LATH,
SHINGLES,
MOULDINGS, Etc.**



Mr. Alex. Naismith of Vancouver, writes under date of March 20th to say: "The washing machine I received is a great improvement on the old one." We believe that those who are in use now at the General Hospital, Women's Home, Children's Home, Deaf and Dumb Institute, Keeley Institute, Provincial Gaol, fourteen of the best laundries, hotels and boarding houses, and perhaps five hundred homes in this city, and thousands of homes in the country. Simply because they are the best in the market. I have offered \$300 for the first washer that will clean as well as mine with same quantity of soap. I have the test and can prove it. I want one merchant in each town to sell them. They sell from \$4.00 up to \$16.00. Can do work in one gallon of soap.

356 Bannatyne Ave. McROSSAN, Winnipeg

45,000 TREES

20,000 Petrofsky Russian Poplar.
10,000 Wobati Russian Poplar.
5,000 Russian Golden Willow.
5,000 Russian Laurel Willow.
5,000 French Laurel Willow.

We are offering the above quality of beautiful young trees, well rooted, about two feet high, for fall and spring delivery, besides a good stock of small fruit flowering shrubs, Virginia Creeper, etc. This is the largest and finest lot of Russian stock ever offered in the west. Set for descriptive price list to

CALDWELL & CO.
Virden Nurseries. VIRDEN, MAN.

From Ocean To Ocean

Buck's Stoves are recognized as the most popular in the market.

Everywhere they are handled by the leading dealers.

The popularity of Buck's Stoves and Ranges is abundantly demonstrated by the fact that dealers are clamoring for the control of these goods in their district.



We protect the dealer who handles our stoves and deal liberally with him.

Handle the best line of Stoves and Ranges in Canada. That is Buck's.

Every article thoroughly modern and up-to-date. Write for catalogue and descriptive matter.



THE WILLIAM BUCK STOVE CO.
Limited

W. G. McMAHON, Sales Agent, Winnipeg

Established 1794.

Hartford

Fire Insurance
Company of Hartford,
Conn.

Net Income:

\$10,028,122.63

Losses Paid Over

\$73,000,000

Insure in the Hartford and
feel SECURE.

W. W. SCRIMES,
Supt., 216 McDermott Ave.,
WINNIPEG.

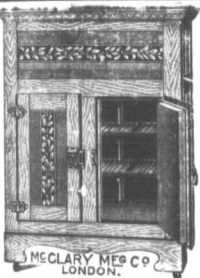
AGENTS WANTED.

To The Trade

Now is the time to place your orders for REFRIGERATORS and ICE CREAM FREEZERS. We are exclusive agents in Canada for the "LEONARD CLEANABLE REFRIGERATORS," which are without exception the best made in the United States.

The "MODEL" (our own make) is also a first class Refrigerator, and although less in price than the "LEONARD" they are equal to the best made in Canada.

We are also agents for the "WHITE MOUNTAIN" ICE CREAM FREEZERS, which have no superior. Prices and all other information furnished to the trade on application.



THE McCLARY MANUFACTURING CO.

183-185-187 Bannatyne Ave, Winnipeg.

London Toronto Montreal Vancouver St. John, N. B.

Before You Order

Your Spring and Winter Underwear give our travellers a chance to show you the best selling line in the market. Ladies', Men's, Boys' and Girls' full-fashioned Scotch Knit Underclothing made in Merino, Natural, Gauze, Silk and Wool. All wool, in light and heavy weights, for spring, fall and winter.

All our full fashioned goods bear this label

**WARRANTED
TURNBULL'S**

Ladies', Children's and Infants' Perfect Fitting, Elastic Ribbed Vests, Drawers, Union Suits in white, natural, black and scarlet. Ankle and Knee Black Tights, Infants' Anti-Grippe and Roller Bands.

THE C. TURNBULL CO. LIMITED
OF GALT

J. M. COOMBS
Winnipeg

JOS. W. MAY
6 Bastion Square, Victoria, B.C.

Stephens's Inks Spring Is Here

We can now ship ink with safety. We have a well assorted stock of Stephens's and Stafford's Inks, Muilage and Paste.

For the coming Holidays we offer you Fireworks, Flags, Cannons, Pistols, etc. For Spring—Tops, Marbles, Skip Ropes, Express Wagons, Croquet, etc. In Season—Moth Bags—two sizes. Your valued orders solicited.

THE CONSOLIDATED STATIONERY CO. Ltd.

McDERMOTT AVENUE, WINNIPEG

TREES THAT GROW

WRITE AT ONCE FOR SPRING
1902 CATALOGUE

DO NOT ORDER FROM OLD EDITIONS

Fruit trees, small fruits, evergreens and deciduous windbreak stock, ornamental trees, shrubs and plants, house plants and foliage plants for the lawn—We offer in these lines the most complete assortment in the west. And remember that we have been testing varieties here in Minnesota for over 30 years and catalogue only those that are best adapted to Northern culture.

SPECIALTIES—Okabena apple, Lyman's Prolific crab apple, Aitkin and Berrys plum, Compass cherry, North Star Currant, Red Jacket gooseberry.

THE JEWELL NURSERY CO., Lake City, Minn.

Established 1868. 1,000 Acres. Capital \$100,000.

STATISTICAL WHEAT REPORT.

WHEAT IN CANADA.

Stocks of wheat in Canada at principal points of accumulation are reported as follows:

Montreal	55,000
Toronto	31,000
Depot Harbor, Ont.	10,000
Totals	96,000
Kingston	25,000
Keewatin	5,922,000
Winnipeg	550,000
Manitoba elevators	12,500,000

Total March 29, 18,902,000
Total previous week, 19,137,000
Total a year ago, 2,531,000

BRADSTREET'S REPORT OF STOCKS.

Total stocks in the United States and Canada, east of the Rocky Mountains, as reported by Bradstreet's report, 53,388,000 bushels, an against 78,842,000 bushels the previous week.

Total stocks in the United States and Canada a year ago were 75,001,000 bushels, according to Bradstreet's report.

Stocks of wheat at Pacific coast ports

on March 1 were 5,687,000 bushels.

THE VISIBLE SUPPLY.

The Chicago visible supply statement of stocks in the United States and Canada, east of the Rocky Mountains, for the week ending April 3 was 48,010,000 bushels, being a decrease of 1,236,000 bushels for the week. A year ago the visible supply was 53,800,000 bushels, two years ago 62,422,000 bushels, three years ago 62,431,000 bushels, four years ago 61,219,000 bushels, five years ago 57,286,000 bushels.

STOCKS OF OATS AND CORN.

The visible supply of oats in the United States and Canada, east of the Rocky Mountains is 2,380,000 bushels, compared with 2,520,000 bushels a year ago. The visible supply of corn is 8,508,000 bushels, compared with 21,990,000 bushels a year ago, according to the Chicago statement.

WORLD'S WHEAT STOCKS.

Stocks of wheat in America and Europe and abroad for Europe Mar. 1 in each year for a series of years, were as follows—Bradstreet's report:

Year	Bushels
1902	600,000,000
1903	587,000,000
1904	583,000,000
1905	578,000,000
1906	572,000,000
1907	566,000,000
1908	560,000,000
1909	554,000,000
1910	548,000,000

WHEAT MOVEMENT.

The following table gives the receipts of wheat at the four principal United States spring wheat markets, from the beginning of the crop movement, Aug. 1, 1901, to date, compared with the same period of last year.

City	This crop.	Last crop.
Minneapolis	71,535,136	62,920,710
Milwaukee	4,847,680	7,348,520
Duluth	40,137,598	16,691,329
Chicago	34,923,348	36,935,560
Total	151,443,762	123,917,149

The following table gives the receipts of wheat at the four principal United States winter wheat markets, from the beginning of the crop movement, July 1, 1901, to date, compared with the same period of last year.

City	This crop.	Last crop.
Toledo	6,319,268	8,478,482
St. Louis	16,169,856	18,967,771
Detroit	1,622,848	2,586,860
Kansas City	37,422,148	32,083,817
Total	42,534,920	62,848,970

Winnipeg Prices a Year Ago.

Following were Winnipeg prices this date last year:

Wheat—Cash No. 1 hard closed at 76c in store; Port William, 75c.

Flour—Jobbing price per sack: Patent, \$2.10; best bakers, \$1.95.

Milwaukee—Bran, \$1.00 per ton; shorts, \$1.10 per ton delivered.

Oats—Carlota on track, Alberta #1 @ 60c; barley—None offering.

Corn—In carlots, 50¢/bu. per bushel of 60 lbs.

Butter—Dairy, 12¢/lb. per lb.; creamery jobbing at 2c.

Cheese—10c to retail merchants.

Eggs—11c net for fresh stock.

Potatoes—Farmers' loads on the street, 60¢/bu. per bushel.

Dressed Meats—Beef, 6¢/lb. for city dressed; country, 5¢; under the figures: veal, 7¢/lb.; mutton, fresh, 10¢/lb. city, 6¢/lb.

Poultry—Dressed chickens, 7¢/lb.; ducks, dressed, 8c; geese, 8c; turkeys, dressed, 11¢/lb.

Game—Nominal.

Hides—No. 1 hides, 5c per lb.

Wool—60¢/cwt. for unwashed fleece.

Beaver—Raw, 25c per lb.

Baled Hay—\$6.00 per ton on cars.

Live Stock—Cattle, 8¢/cwt. for cackers, yearlings, 10¢/cwt. per head; sheep, 5c; hogs, 4¢/cwt.

GRAIN STOCKS AT LAKE PORTS.

Port William.

Stocks of grain in store at Port William on Monday, the 7th inst., were as follows:

Wheat—1 northern, 221,200 bushels; No. 1 northern, 2,009,483 bushels; No. 2 northern, 2,547,945 bushels; No. 3 northern, 91,745 bushels; total, 5,769,373 bushels, making the total of wheat 4,274,576 bushels.

Oats—No. 1, 9,299 bushels; barley—No. 2, 1,729 bushels.

Receipts of wheat at Port William during the week ending April 7th amounted to 124,978 bushels, and shipments to 6,426 bushels. Receipts of oats were nil, and shipments nil. Receipts of barley were nil, and shipments nil.

Port Arthur.

Stocks in store at King's elevator, Port Arthur, on the 7th inst., were—

Wheat—No. 1 hard, 4,140 bushels; No. 1 northern, 5,137 bushels; No. 2 northern, 51,317 bushels; No. 2 northern, 68,921 bushels; other grades, 140,621 bushels; total, 256,133 bushels.

Oats—No. 1, 9,299 bushels; mixed, 14,723 bushels; total, 24,022 bushels.

Receipts of wheat at this elevator during the week were 6,946 bushels, and shipments, 3,994 bushels.

Stocks of grain in store at the new Canadian Northern elevator at Port Arthur on the 31st ult., was as follows—

Wheat—No. 1 hard, 34,167 bushels; No. 1 northern, 79,015 bushels; No. 2 northern, 51,317 bushels; other grades, 140,621 bushels; making a total of 367,933 bushels.

Oats—Feed, 180 bushels; mixed, 1,188 bushels.

Manitoba Wheat Stocks.

There were 5,346,614 bushels of wheat in store at Port William and Port Arthur on April 7. A year ago there were 2,342,039 bushels. Two years ago there were 810,000 bushels. Stocks in store at Port William, Port Arthur, Keewatin, Winnipeg, and interior points are estimated approximately at 18,642,000 bushels, compared with 4,964,000 bushels a year ago, 10,200,000 bushels three years ago, and 3,175,000 bushels four years ago.

Grain Inspection.

During the week ending April 7 there were inspected 545 cars of grain, comprising the following:

Wheat—No. 1 hard, 27 cars; No. 1 northern, 176 cars; 2 northern, 229 cars; 3 northern, 1 car; No. 4, 10 cars; feed, 3 cars; rejected, 1; 3 cars; no grade, 39 cars; rejected, 1 car; making a total inspection of wheat of 487 cars.

Oats—No. 2 white, 27 cars; 2 mixed, 6 cars; feed, 19 cars; no grade, 1 car; rejected, 2 cars; total, 55 cars.

Barley—No. 3, 1 car; feed, 1 car; total, 2 cars.

Flax—Rej., 1 car.

For the corresponding month last year the inspections were 620 cars of grain, and to year ago, 420 cars.

Grain and Milling Notes.

Seeding is well advanced in Southern Minnesota.

The president of the board of trade at Carlyle, Assa., is making an offer of a bonus of \$2,500 to the right man who will build a one hundred barrel grain mill at Carlyle.

For some time past there has been talk of a big flour mill being erected at Quebec to grind Canadian wheat for the export trade. The capacity is put at 1,000 barrels per day.

A gentleman who recently returned to Red Portage from the east says there is no doubt now that the Keewatin Power Co. will erect at least one large flour mill on its site near Norman this year.

The flour mill at Minnedosa has been closed down to allow the installation of new machinery. The C. P. R. will put in a siding to the mill, and the proprietor contemplates the erection of an elevator in connection.

Geo. H. Shaw, traffic manager of the Canadian Northern Railway, has announced that the arrangement between his company and King's elevators

at Port Arthur regarding the handling of wheat graded unfit for storing in elevators has been again entered into, and the railway will carry wheat there to be dried.

The contract for the new C. P. R. elevator at Port William, as was expected, has been let to a United States company. The reason for giving an American company the contract, is that, as the elevator is to be built of concrete and not of steel, the patent covering the class of building to be made is so held that only this company can put up the structure. This and will be finished in time for the coming crop.

Minnesota wheat market reports say: "The situation in the northwest is becoming quite strong on wheat. Seeding is being delayed by unfavorable weather. In many portions of North Dakota it will be some time, with most favorable weather, for the ground to get in suitable condition to be worked. The situation is quite unfavorable in the region of the Red River Valley, owing to heavy rains and snow during the past two weeks. The weather is cold and unseasonable at present."

Arbor Day.

It is to be hoped an effort will be made to observe Arbor Day in Manitoba this year in something like the spirit for which the day was set apart. The idea of proclaiming a special day for the planting of trees, to be observed as a holiday so far as other work is concerned, is a good one, providing educational influences are used to lead to a proper observance of the day. In this prairie country, there is special need for encouraging the planting of trees, and every effort in this direction is worthy of encouragement. The plan of interesting the schools in the work of tree planting is one of the best which has been proposed. The children can be encouraged not only to take part in the actual work of tree planting, but they can also be given instruction as to the value and necessity for planting trees. The children of to-day will be the men and women of the near future, and much it is to be hoped from the instruction they will receive in these Arbor Day celebrations.

THE DOMINION ELEVATOR CO

LIMITED

GRAIN EXPORTERS

OFFICE:

GRAIN EXCHANGE WINNIPEG

KIRKPATRICK & COOKSON

Montreal.

Consignments of Grain and Manitoba Produce solicited.

F. O. B. Orders of Wheat, Barley, Oats, etc., requested.

Established 1860, Manitoba Grain Code used.

JAS. CARRUTHERS & CO.

GRAIN EXPORTERS

MONTREAL TORONTO WINNIPEG

The Northern Elevator Co.

LIMITED.

GRAIN

HEAD OFFICE WINNIPEG.

BRANCH OFFICES:

MONTREAL NEW YORK LONDON, ENGL.



WINNIPEG GRAIN AND PRODUCE EXCHANGE

C. A. YOUNG, President.

GEO. V. HARTING, CHAS. N. BELL, Vice-President. Secy-Treas.

LICENSED AND BONDED

THOMPSON, SONS & CO.

GRAIN COMMISSION MERCHANTS

All grades of Wheat, Oats and Barley handled. Best prices; prompt returns. Liberal advances on B. L. Write for further information.

WINNIPEG.

H. D. METCALFE

GRAIN EXPORTER

620 GRAIN EXCHANGE WINNIPEG

18 STOCK EXCHANGE MONTREAL

Direct connection with Europe via boats.

THE WINNIPEG ELEVATOR CO.

LIMITED

GRAIN EXPORTERS

OFFICE: GRAIN EXCHANGE, WINNIPEG

ROBT. MUIR & CO.

GRAIN DEALERS AND MILLERS

SHIPPERS OF WHEAT, OATS, BARLEY, FLAX, FLOUR, BRAN, SHORTS, &c.

Buy or sell on commission. Refer to list of selling rates in our list, write us for quotations. Advances made on consignments. Licensed and bonded.

WINNIPEG, MAN.

M. McLaughlin & Co.

ROYAL DOMINION MILLS

TORONTO.

CAPACITY, 700 BBL. DAILY

MILLERS OF

No. 1 Manitoba Hard Wheat



"THE" ROUTE

TO

Australasia

AND

The Orient

CANADA'S SCENIC ROUTE.

Travel by the C. P. R. and be assured of SOLID COMFORT.

FIRST CLASS C. P. R. SLEEPERS on all through trains.

THROUGH TOURIST SLEEPERS

THE BEST

Tourist Rates quoted to all Points EAST, WEST, SOUTH.

THE OLD COUNTRY, THE ORIENT, THE ANTIPODES.

Those desiring information in regard to any part of the world reached by the C. P. R. or its connections are requested to apply to any C. P. R. representative or to

C. E. McPHERSON,

General Passenger Agent, Winnipeg, Man.

WANTED

Local agents or travelling salesmen for Manitoba and the Territories, to handle a complete line of nursery stock, fruit trees, ornamental trees, seed potatoes, small fruits, etc. We grow special lines of hardy Russian stock, adapted to cold districts. Sample catalogues, etc., supplied free. For terms apply now.

PELHAM NURSERY COMPANY, Toronto, Ont.

N. B.—Special inducements to farmers who can only work part time at the business. Handsome catalogue free on application, which gives valuable information concerning ornamental and fruit stock.

P. N. Co.

EVERYTHING IN

BROOMS BRUSHES BASKETS

From the cheapest that's good to the best that's made.

WALTER WOODS & CO

WHOLESALE WOODENWARE.

147 Bannatyne Ave., Winnipeg.



THROUGH TICKETS TO ALL PORTS.

EAST, SOUTH AND WEST CHEAP TICKETS TO CALIFORNIA

With through Tourist Car, every Wednesday, via Portland and Shasta route.

OCEAN TICKETS.

On sale to Great Britain and the Continent; also to Atlantic ports, etc. Trains leave Winnipeg daily at 1.45 p. m., from Canadian Northern Railway station. Water street first-class equipment, including Pullman and Dining Cars. For further information call on nearest Canadian Northern Ticket Agent, or write CHAS. & FLEM.

Gen. Pass. & Ticket Agt. St. Paul, Minn. or—

H. SWINFORD,

Gen. Agt., 391 Main Street, Winnipeg.

ATLANTIC STEAMSHIP LINES.

Allen Line—From St. John.	
Tunisian.....	April 5
Corinthian.....	April 12
Alban Line—From Halifax.	
Tunisian.....	April 7
Corinthian.....	April 14
Beaver Line—From St. John.	
Lake Ontario.....	April 4
Lake Superior.....	April 18
Dominion Line—From Portland.	
Californian.....	April 12
Colorado.....	April 19
White Star Line—From New York.	
Majestic.....	April 9
Germanic.....	April 16
Cunard Line—From New York.	
Umbria.....	April 5
Campania.....	April 12
Cunard Line—From Boston.	
Sylvania.....	April 8
Ivonia.....	April 29
Dominion Line—From Boston.	
New England.....	April 12
Mervin.....	April 19
American Line—New York.	
St. Louis.....	April 9
Philadelphia.....	April 16
Red Star Line—From New York.	
Southwark.....	April 9
Vaderland.....	April 16
Allen State Line—From New York.	
Mongolian.....	April 5
Carthaginian.....	April 12
Anchor Line—From New York.	
Astoria.....	April 12
Anchorage.....	April 19

RATES—Cabin, \$50, \$55, \$60, \$70, \$80 and upwards. Second Cabin, \$35, \$37.50, \$40 and upwards. Steerage, \$24.50, \$25.50, \$26.

Passengers ticketed through to all points in Great Britain and Ireland, and at specially low rates to all parts of the European continent. Prepaid passage arranged from all points. Apply to the nearest steamship or railway ticket agent, or to W. F. FLEMING, General Agent, Winnipeg, Man.

Since Lent is over a good many Winnipeg men have returned to the borrowing habit.

In spite of dismal prognostications the ping pong tournament has so far failed to seriously injure anybody.

W. C. MACDONALD, Actuary.

J. K. MACDONALD, Managing Director.

The Confederation Life Association

There are no conditions as to residence, travel or occupation in the Unconditional Accumulative Policies issued by this Association. They guarantee Extended Insurance, Paid-up Policies, and Cash Surrender values.

Manitoba, N. W. T. and B. C.—Winnipeg Office, 467 Main Street. CHARLES E. KERR, Sec.—Treasurer. DANIEL MACDONALD, Manager. HENRY WORSLEY, City Agent.

Brandon Office..... F. W. GILL, Cashier.

Hotel Ireland

The Palace Family and Commercial Hotel

W. D. DOUGLAS MANAGER

City Hall Square, Winnipeg

RATES: \$2.00 to \$4.00 PER DAY

SECOND TO NOTHING IN CANADA

MOYIE LUMBER COMPANY

Manufacturers and Dealers in

LUMBER LATH SHINGLES MOULDINGS CEDAR POSTS AND POLES

DRY KILN AND PLANERS IN CONNECTION

SAMUEL GRANT, Manager

MOYIE, B.C.

SEVEN PAPER MACHINES NOW RUNNING

We are therefore ready to book orders for

News, Tissues, Heavy Wrappings

Writings, Lith., Nos. 1, 2 and 3 Book, Bristol Board, Cover Papers and Woodboard

THE E. B. EDDY CO. LIMITED

Hull, Montreal, Toronto, Quebec, Ottawa, Hamilton, Kingston, London, St. John, N.B., Halifax, Winnipeg, Victoria, Vancouver

T & B PLUG AND CUT TOBACCO

Try the new four. They are giving us tire satisfaction. Pays the retailer a handsome profit.

THE GEO. E. TUCKETT & SON CO., LTD. HAMILTON.

TRES & PERSEE, Agents, Winnipeg.

Have You Bought

Your Wagons,
Toy Carts,
Velocipedes,
Baby Carriages

We have a big assortment of these in stock. We are also carrying a large range of Hammocks. Catalogue, with best prices on application.

We have just received a large range of Comotation Tables, Exercise and Scribbling Books and Papereries. These are right up-to-date and you should have some.

CLARK BROS. & CO. P. O. BOX 1240 WINNIPEG

THE IMPERIA

— FRUIT AND
WHOLESALE PRODUCE CO

We handle all kinds of green fruits and are prepared to fill your orders for same promptly.

We also buy or handle on commission everything in the way of country produce at highest cash prices and the best rates of commission.

Settlements made promptly.

880 Elgin Avenue, Winnipeg.

THE EVER INCREASING DEMAND FOR

COCKSHUTT PLOWS

has necessitated larger manufacturing facilities from year to year.

We are now pleased to announce that during the present season extensive additions will be made to our Factory and Plant, and that our present facilities will be increased by 100 per cent.

HAVE YOU SECURED THE AGENCY FOR THE CELEBRATED COCKSHUTT PLOWS?

If so, you are assured of the Spring Plow Trade in your Territory.

COCKSHUTT PLOW COMPANY, LTD., WINNIPEG

Factory: BRANTFORD

To those who have not been getting

OGILVIE'S ROLLED OATS

*We would suggest your Insisting on getting
OGILVIE'S—and no other.*

*They are the best ever made, being so pronounced by all who
are using them. Made from selected white oats.*

DELICIOUS FLAVOR

FREE FROM HULLS

Grain Tickets

AND OTHER STATIONERY

SEND FOR SAMPLES

THE FRANKLIN PRESS Ltd. Opp. Grain Exchange, Winnipeg

"REFINED ALE"

(Which Sparkles Like Champagne.)

"EXTRA STOUT"

and

"REDWOOD LAGER"

Are what the people are using.

WHY?

BECAUSE they are always marketed in PRIME CONDITION.

BECAUSE THEY ARE THOROUGHLY

FILTERED in wood.

BECAUSE all ingredients are PURE.

BECAUSE THE UTMOST CLEAN-

NESS is observed in every process of

manufacture.

Order from your wholesale dealer or direct from Redwood factories, Win-

peg.

E. I. DREWRY Manufacturer and

Importer, Winnipeg.

SADLER & HAWORTH

Tanners and Manufacturers of

Oak Leather Belting

Montreal and Toronto.

JOHN A. CARRUTHERS, Belting

Agent, 120 King Street, Winnipeg

Manitoba.

WM. FERGUSON

WHOLESALE



*Wines, Liquor
and Cigars*

8th STREET, BRANDON

IMPORTANT . .

My travellers are now on the road with Spring and Fall Samples.

It will be to the interest of Merchants to defer buying until they see my Samples.

THOS. CLEARHURST

BROCKVILLE, ONT.