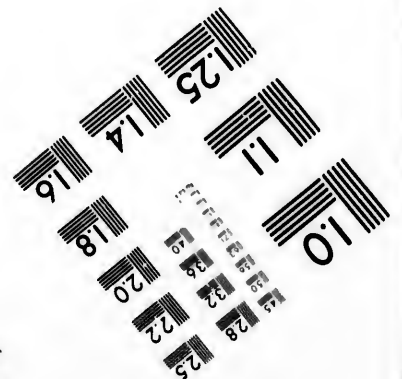
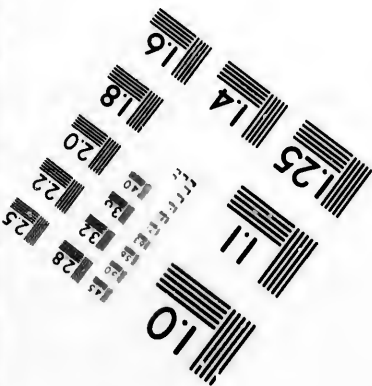
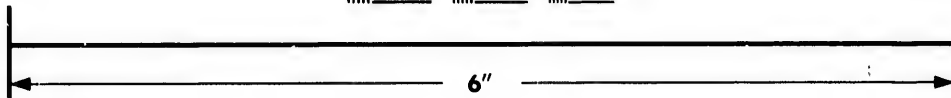
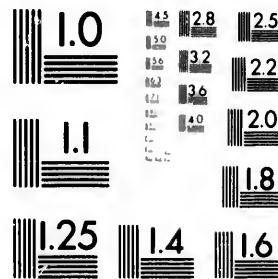


**IMAGE EVALUATION  
TEST TARGET (MT-3)**



**Photographic  
Sciences  
Corporation**

23 WEST MAIN STREET  
WEBSTER, N.Y. 14580  
(716) 872-4503

14  
16  
28  
32  
36  
22  
20  
18

**CIHM/ICMH  
Microfiche  
Series.**

**CIHM/ICMH  
Collection de  
microfiches.**



**Canadian Institute for Historical Microreproductions / Institut canadien de microreproductions historiques**

10  
11

**© 1981**

Technical and Bibliographic Notes/Notes techniques et bibliographiques

The Institute has attempted to obtain the best original copy available for filming. Features of this copy which may be bibliographically unique, which may alter any of the images in the reproduction, or which may significantly change the usual method of filming, are checked below.

L'Institut a microfilmé le meilleur exemplaire qu'il lui a été possible de se procurer. Les détails de cet exemplaire qui sont peut-être uniques du point de vue bibliographique, qui peuvent modifier une image reproduite, ou qui peuvent exiger une modification dans la méthode normale de filmage sont indiqués ci-dessous.

- Coloured covers/  
Couverture de couleur
- Covers damaged/  
Couverture endommagée
- Covers restored and/or laminated/  
Couverture restaurée et/ou pelliculée
- Cover title missing/  
Le titre de couverture manque
- Coloured maps/  
Cartes géographiques en couleur
- Coloured ink (i.e. other than blue or black)/  
Encre de couleur (i.e. autre que bleue ou noire)
- Coloured plates and/or illustrations/  
Planches et/ou illustrations en couleur
- Bound with other material/  
Relié avec d'autres documents
- Tight binding may cause shadows or distortion  
along interior margin/  
La reliure serrée peut causer de l'ombre ou de la  
distortion le long de la marge intérieure
- Blank leaves added during restoration may  
appear within the text. Whenever possible, these  
have been omitted from filming/  
Il se peut que certaines pages blanches ajoutées  
lors d'une restauration apparaissent dans le texte,  
mais, lorsque cela était possible, ces pages n'ont  
pas été filmées.
- Additional comments:/  
Commentaires supplémentaires:

- Coloured pages/  
Pages de couleur
- Pages damaged/  
Pages endommagées
- Pages restored and/or laminated/  
Pages restaurées et/ou pelliculées
- Pages discoloured, stained or foxed/  
Pages décolorées, tachetées ou piquées
- Pages detached/  
Pages détachées
- Showthrough/  
Transparence
- Quality of print varies/  
Qualité inégale de l'impression
- Includes supplementary material/  
Comprend du matériel supplémentaire
- Only edition available/  
Seule édition disponible
- Pages wholly or partially obscured by errata  
slips, tissues, etc., have been refilmed to  
ensure the best possible image/  
Les pages totalement ou partiellement  
obscurcies par un feuillet d'errata, une pelure,  
etc., ont été filmées à nouveau de façon à  
obtenir la meilleure image possible.

This item is filmed at the reduction ratio checked below/  
Ce document est filmé au taux de réduction indiqué ci-dessous.

10X	12X	14X	16X	18X	20X	22X	24X	26X	28X	30X	32X
<input type="checkbox"/>	<input type="checkbox"/>	<input type="checkbox"/>	<input type="checkbox"/>	<input type="checkbox"/>	<input type="checkbox"/>	<input type="checkbox"/>	<input checked="" type="checkbox"/>	<input type="checkbox"/>	<input type="checkbox"/>	<input type="checkbox"/>	<input type="checkbox"/>

The copy filmed here has been reproduced thanks to the generosity of:

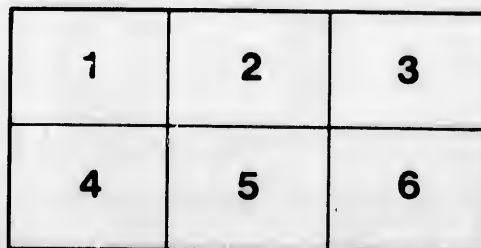
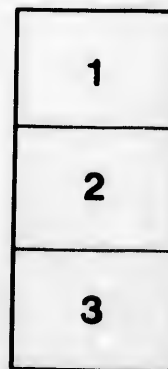
Library Division  
Provincial Archives of British Columbia

The images appearing here are the best quality possible considering the condition and legibility of the original copy and in keeping with the filming contract specifications.

Original copies in printed paper covers are filmed beginning with the front cover and ending on the last page with a printed or illustrated impression, or the back cover when appropriate. All other original copies are filmed beginning on the first page with a printed or illustrated impression, and ending on the last page with a printed or illustrated impression.

The last recorded frame on each microfiche shell contain the symbol  $\rightarrow$  (meaning "CONTINUED"), or the symbol  $\nabla$  (meaning "END"), whichever applies.

Maps, plates, charts, etc., may be filmed at different reduction ratios. Those too large to be entirely included in one exposure are filmed beginning in the upper left hand corner, left to right and top to bottom, as many frames as required. The following diagrams illustrate the method:



L'exemplaire filmé fut reproduit grâce à la générosité de:

Library Division  
Provincial Archives of British Columbia

Les images suivantes ont été reproduites avec le plus grand soin, compte tenu de la condition et de la netteté de l'exemplaire filmé, et en conformité avec les conditions du contrat de filmage.

Les exemplaires originaux dont la couverture en papier est imprimée sont filmés en commençant par le premier plat et en terminant soit par la dernière page qui comporte une empreinte d'impression ou d'illustration, soit par le second plat, selon le cas. Tous les autres exemplaires originaux sont filmés en commençant par la première page qui comporte une empreinte d'impression ou d'illustration et en terminant par la dernière page qui comporte une telle empreinte.

Un des symboles suivants apparaît sur la dernière image de chaque microfiche, selon le cas: le symbole  $\rightarrow$  signifie "A SUIVRE", le symbole  $\nabla$  signifie "FIN".

Les cartes, planches, tableaux, etc., peuvent être filmés à des taux de réduction différents. Lorsque le document est trop grand pour être reproduit en un seul cliché, il est filmé à partir de l'angle supérieur gauche, de gauche à droite, et de haut en bas, en prenant le nombre d'images nécessaire. Les diagrammes suivants illustrent la méthode.

errata  
to

pelure,  
on à



NWP  
971M  
M143

64p. of photos. 17 em.

# *Picturesque* *British Columbia*

ITS MAGNIFICENT MOUNTAIN AND RIVER SCENERY

THE PEAKS AND PASSES OF THE ROCKIES AND SELKIRKS

THE WEIRD FRASER CANON and the

KOOTENAY AND CROW'S NEST COUNTRY

THE BEAUTIFUL COAST CITIES OF VANCOUVER AND VICTORIA

**PUBLISHER OF**  
SOUVENIRS of

Newfoundland	Halifax
Evangeline Land	Cape Breton
St. John	Charlottetown
Quebec	Montreal
Toronto	Muskoka
Sault Ste. Marie	Detroit

**PUBLISHED BY**

**W. G. MacFARLANE**

SATURDAY NIGHT BUILDING

TORONTO

**PUBLISHER OF**  
SOUVENIRS of

Mackinac Island	Traverse Bay Resorts
Winnipeg	Port Arthur
Calgary	Rockies
All-Canada	Kootenay
Vancouver	Victoria
Tacoma	Portland
	Oregon, etc.



Banff Hotel, Canadian National Park

Canadian Pacific Railway

1915



193018

The Bow Valley, in the Canadian National Park

Canadian Pacific Railway



The Canadian Pacific Railway's splendid mountain hotel, The Banff, at the Banff Hot Springs in the Canadian National Park





Mount Rundle, one of the peaks surrounding the Bow Valley

Canadian Pacific Railway

Park



Bow River Falls, Banff, Alberta

Canadian Pacific Railway



Canadian Pacific Railway



Mount Sir Donald, in the Selkirks  
Canadian Pacific Railway



Lake Louise, one of the Lakes in the Clouds  
Canadian Pacific Railway



Buffaloes in the Park, Banff

Canadian Pacific Railway



Paradise Valley, near Laggan

Canadian Pacific Railway



Valley of the Ten Peaks, near Laggan  
Canadian Pacific Railway



Twin Falls, Yoho Valley  
Canadian Pacific Railway



Lakes in the Clouds, reached from the Station of Laygan. A Scene of Enchantment. Canadian Pacific Railway



acific Railway

Mount Stephen and Halo

Canadian Pacific Railway



Cathedral Peak, near Field

Canadian Pacific Railway



Yoho Valley and Takakkaw Falls

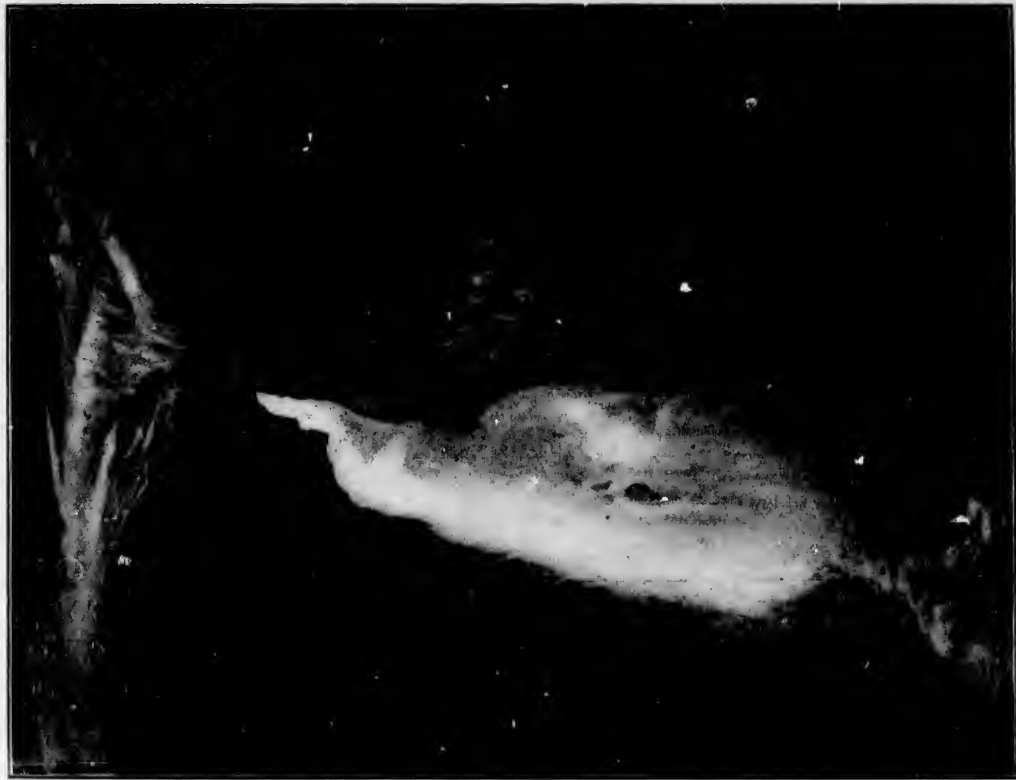
Canadian Pacific Railway





Pacific Railway

Pacific Railway

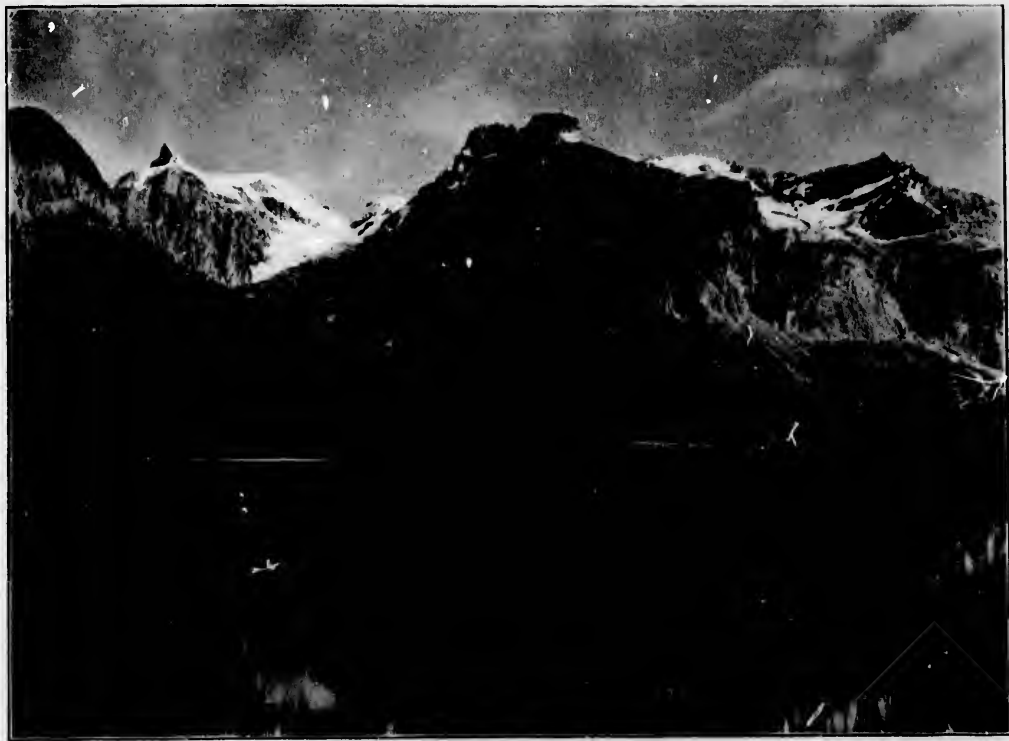


Takakkaw Falls, the Highest Cataract in America Canadian Pacific Railway  
This is one of the most sublime spectacles on the Continent. An enormous volume of water, draining a vast glacier, leaps over a precipice of stupendous height into the narrow-walled Gorge below.



Hermit Range from Glacier Hotel

Canadian Pacific Railway



Emerald Lake, near Field

Canadian Pacific Railway

acific Railway



Foot of the Great Glacier



Canadian Pacific Railway Hotel, Glacier House, at Glacier, B.C.



The Foot of the Great Glacier of the Selkirks



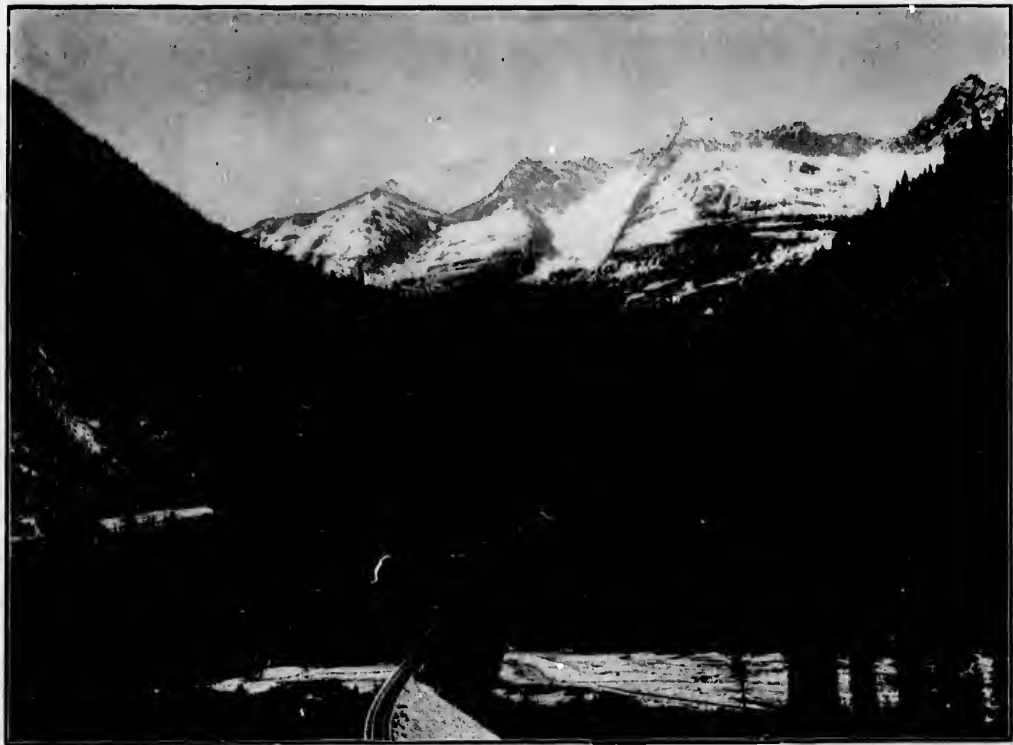
Mount Sir Donald and Eagle Peak, Selkirk Range

Canadian Pacific Railway



Crevasses  
in the  
Glacier

Canadian  
Pacific  
Railway



The Loop, showing Four Tracks, near Glacier

Canadian Pacific Railway





The Four Tunnels, Fraser Canon

Canadian Pacific Railway

ic Railway



Cariboo Road Bridge, Fraser Canon

Canadian Pacific Railway



Hell's Gate, Fraser Canon



Mount Baker

Canadian Pacific Railway



Pacific Railway



Kamloops, a Ranching Centre



Ranching, near Kamloops, B. C.

S. J. Thompson, Photo



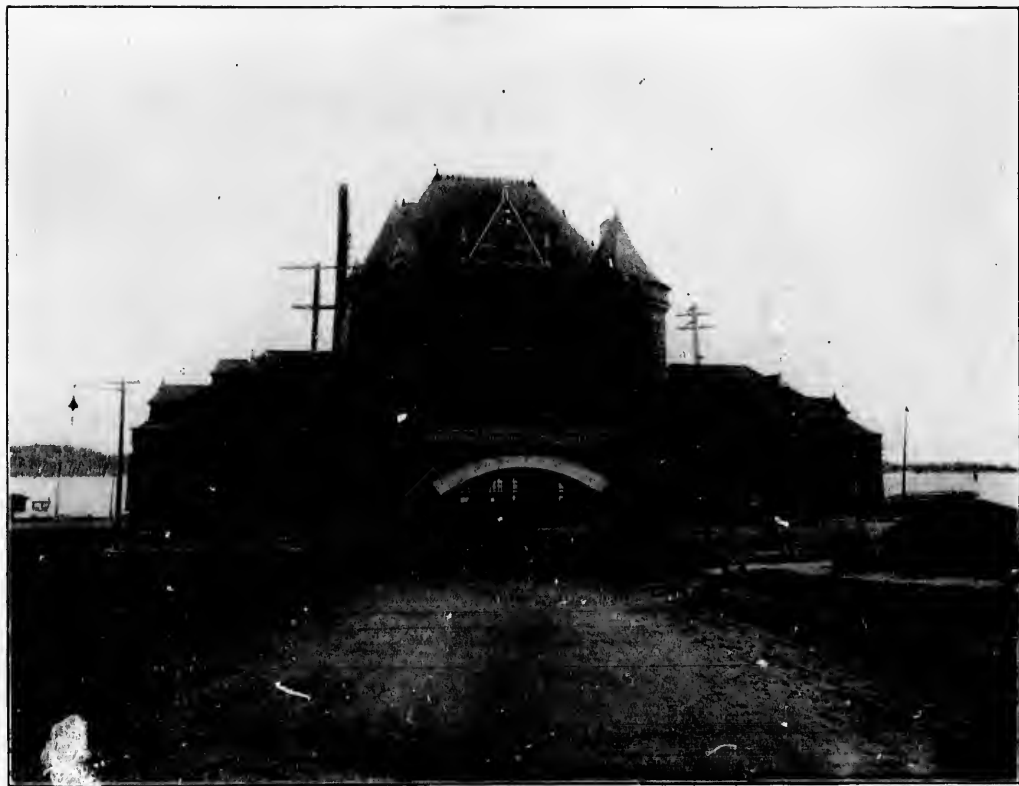
General View of Vancouver

Trueman & Co., Photo



Granville Street, Vancouver

Edwards Bros., Photo



Canadian Pacific Railway Terminus, Vancouver





Hastings Street, Vancouver



Big Tree, Stanley Park, Vancouver

S. J. Thompson, Photo



Forest Giants, Stanley Park, Vancouver

S. J. Thompson, Photo



English Bay, Vancouver

Edwards Bros., Photo



Surf at English Bay

Edwards Bros., Photo

ros., Photo



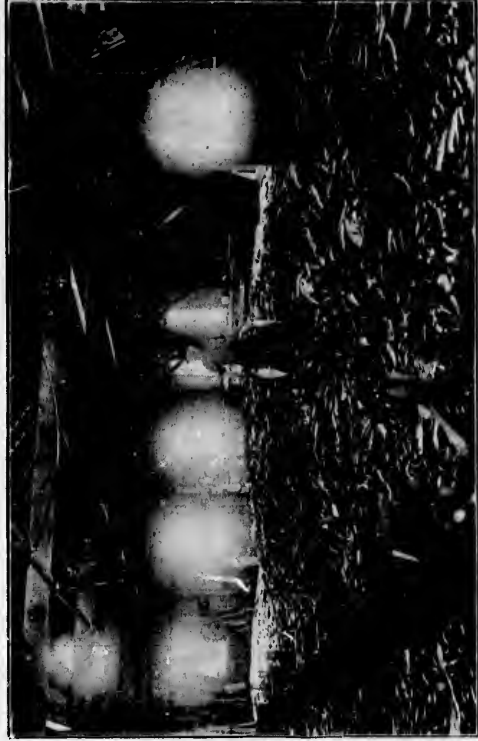
Empress of China passing through Narrows, Vancouver



Moonlight on the Pacific, Vancouver



British Columbia Tooth Picks



On the Fraser River, B.C.—100,000 Salmon



Salmon Running in the Fraser River

Edwards Bros., Photo





, Photo

The Salmon Traps, Vancouver

S. J. Thompson, Photo



Capilano Canon, near Vancouver



Siwash Rock, Vancouver



The Big Tree, Stanley Park, Vancouver

Edwards Bros., Photo

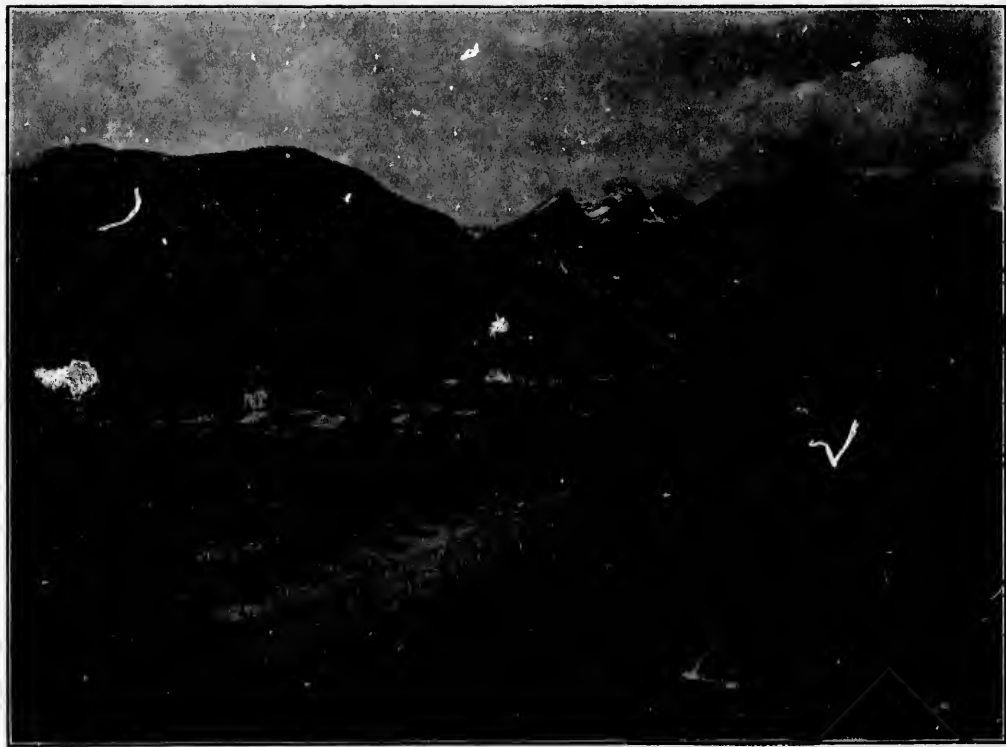


New Westminster—General View and Street Scene



Totem Poles

Canadian Pacific Railway



Fernie and Coke Ovens



Victoria Avenue, Fernie, B.C.

Canadian Pacific Railway



Crathbrook, B.C.

Canadian Pacific Railway



The Loop, Crow's Nest Pass, B.C. Canadian Pacific Railway



Crow's Nest Mountain, B.C. Canadian Pacific Railway





Cave Falls, Crow's Nest Pass

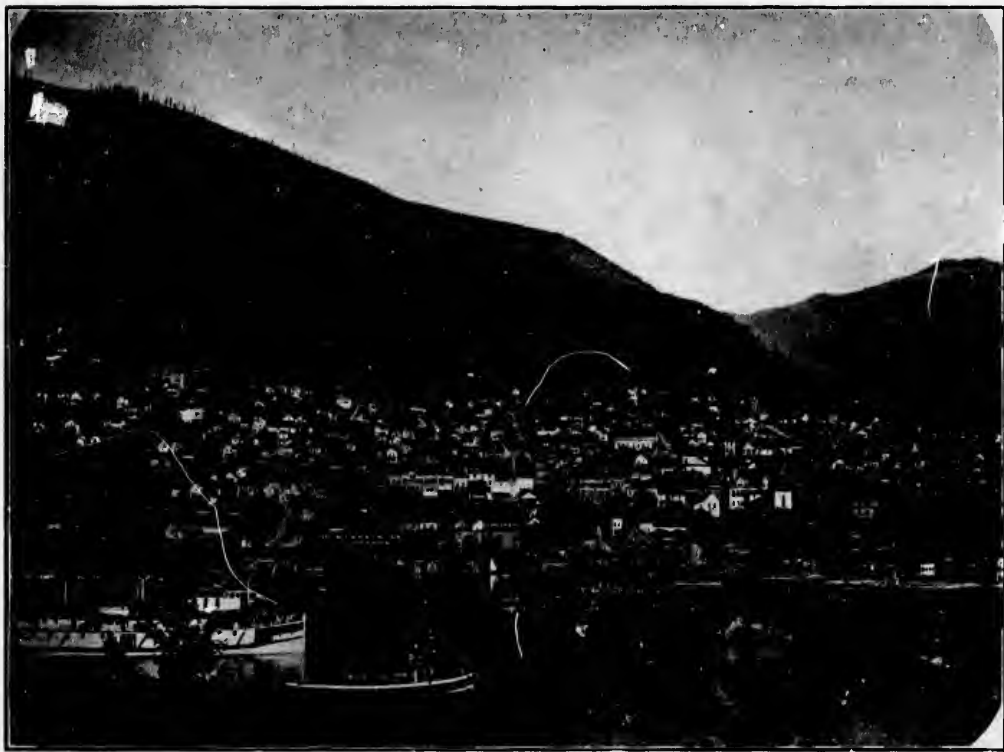


Elk River Canon, Crow's Nest Pass





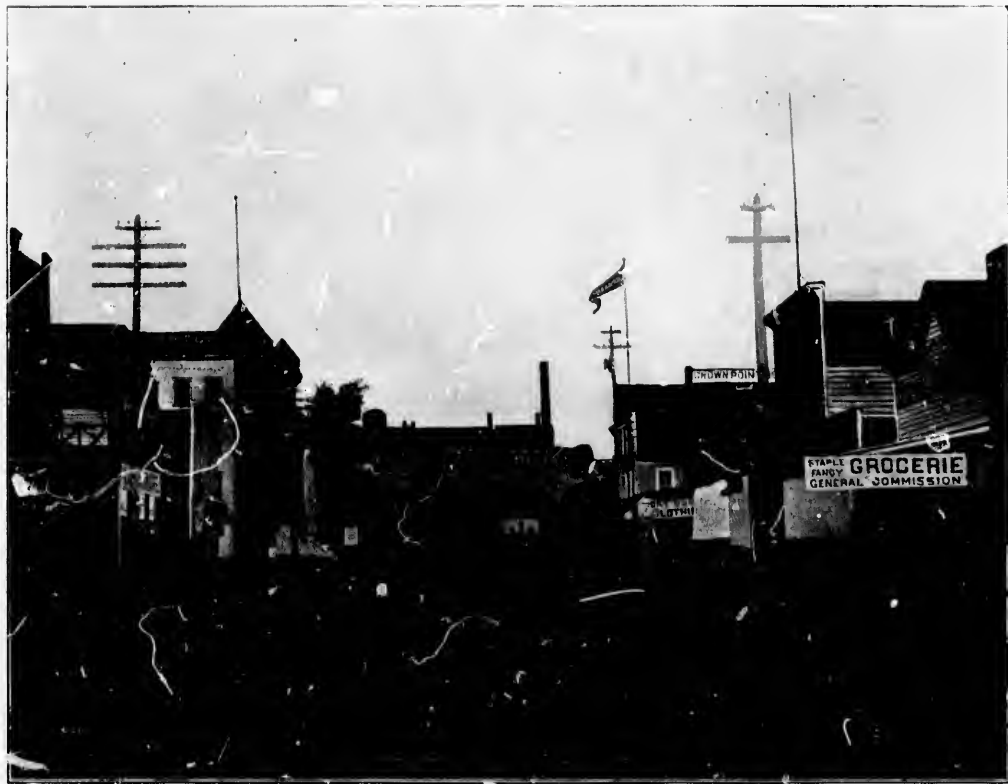
Nelson and the Kootenay River



Nelson, from across the Kootenay River



Nelson, from the Hall Mine Smelter



Main Street, Trail, the Smelter Town

Canadian Pacific Railway



Court House

Bank of Montreal

New Post Office

ROSSLAND BUILDINGS



Centre Star Mine

War Eagle, Le Roi, Josie and No. 1 Mine  
ROSSLAND MINES

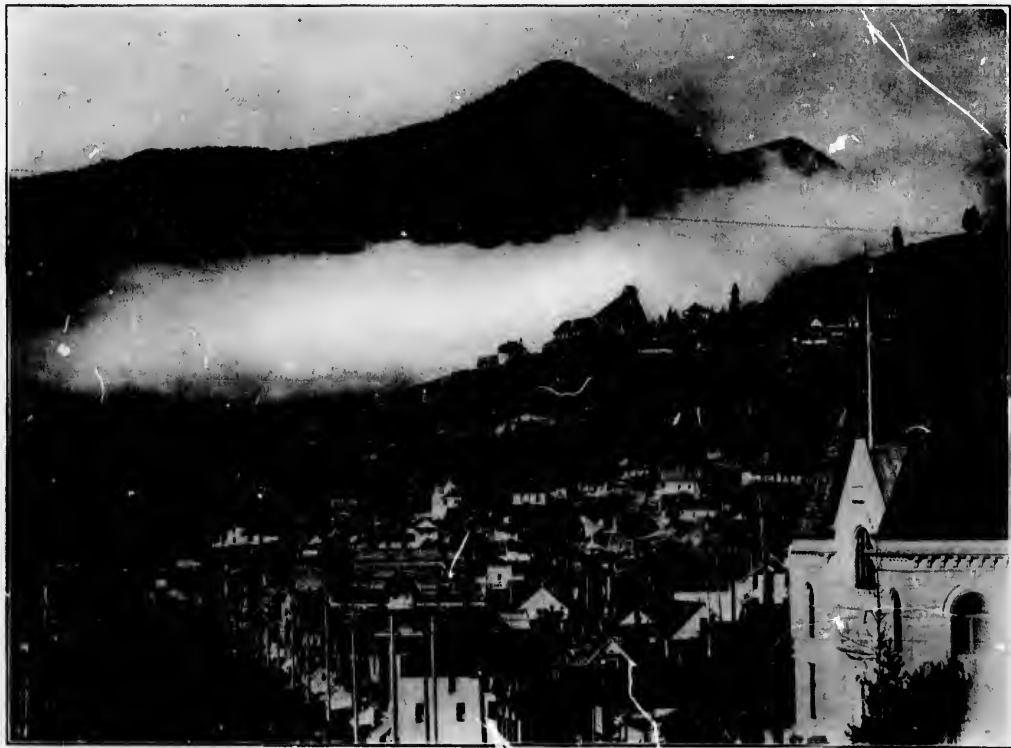
Le Roi Shaft House





Columbia Avenue, Rossland

Canadian Pacific Railway

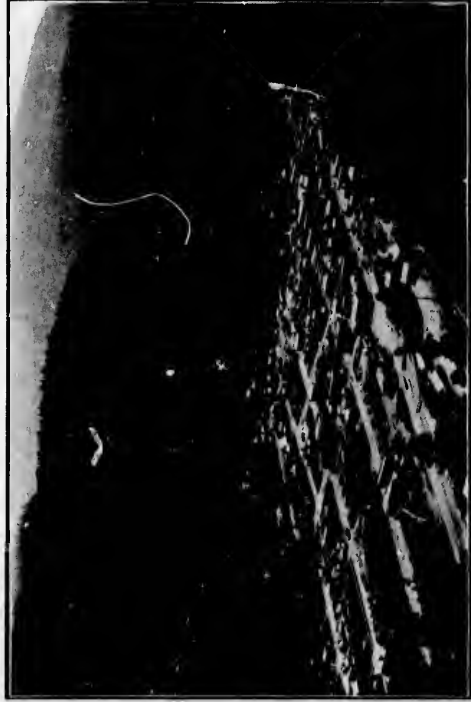


General View of Rosslund, showing the Le Rci Mine



Phoenix, towards old Ironsides Mill

Canadian Pacific Railway



Greenwood, Boundary District

Canadian Pacific Railway



Granby Smelter and Offices, Grand Forks



Grand Forks, B.C.

Canadian Pacific Railway



Parliament Building, Victoria, B.C.



Government Street, Victoria, B.C.



The Gorge, Victoria, B.C.



The Swan Pond, Beacon Hill Park, Victoria, B.C.





Fountain, Beacon Hill Park



H. M. Warships, Esquimalt Harbor, Victoria



Warship Entering Dry Dock, Esquimalt



Indians Racing in War Canoes

