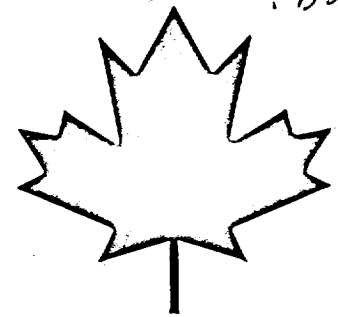
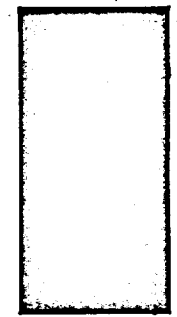


CAI
EA
74C31
ENG
DOCS

SPARE COPY
See my Boxen

5-1-3-BWL-BRA	
12	✓



M
b2645042

CHANCERY BUILDING CANADIAN EMBASSY BRASILIA BRAZIL

FOR DEPARTMENT OF EXTERNAL AFFAIRS

DEPARTMENT OF PUBLIC WORKS
MINISTRE DES TRAVAUX PUBLICS

THOMPSON, BERWICK, PRATT & PARTNERS CONSULTING ARCHITECTS & ENGINEERS

43-270-595
.b2645042

SPARE COPY
seen by Borden

M
b264504X

5-1-3-BWL-DRA	
12	/



CHANCERY BUILDING CANADIAN EMBASSY
BRASILIA BRAZIL

FOR DEPARTMENT OF EXTERNAL AFFAIRS

DEPARTMENT OF PUBLIC WORKS
MINISTERE DES TRAVAUX PUBLICS

THOMPSON, BERWICK, PRATT & PARTNERS CONSULTING ARCHITECTS & ENGINEERS

43-270-595
.b264504X

CHANCERY BUILDING
CANADIAN EMBASSY, BRASILIA

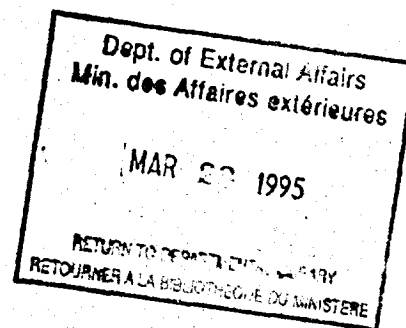
The design concept of the Chancery is based on the principle of integrating man with his natural environment.

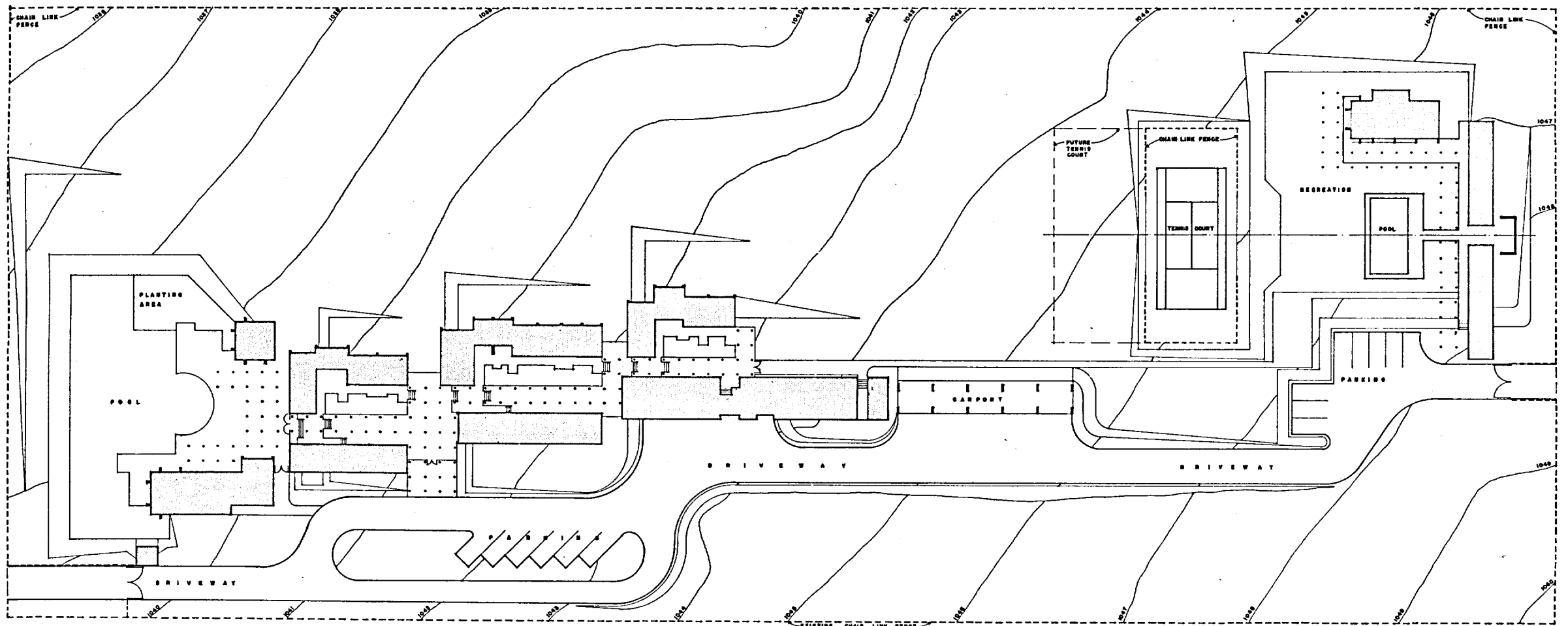
Brasilia is blessed with a superb climate which encourages outdoor activity throughout the year. Outdoor circulation under covered walkways and trellises and beside courtyard pools is implicit in the design of the new Chancery.

The functioning areas of the building are grouped informally around courtyards and relate directly to the contours of the gently sloping site. Most offices are orientated towards the lake and distant views of the surrounding savannah and away from the strong sunlight.

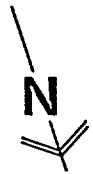
Construction is entirely of reinforced concrete columns and with concrete block infill covered with ochre-coloured plaster. Wood doors, screens and trellises are combined with natural stone floors to produce a warm environment of human scale. Recreation facilities, including a swimming pool and a tennis court are provided at the west end of the site.

Construction is being carried out by CONIC, a company from Recife with offices in Brasilia. The project is scheduled for completion in March of 1976.



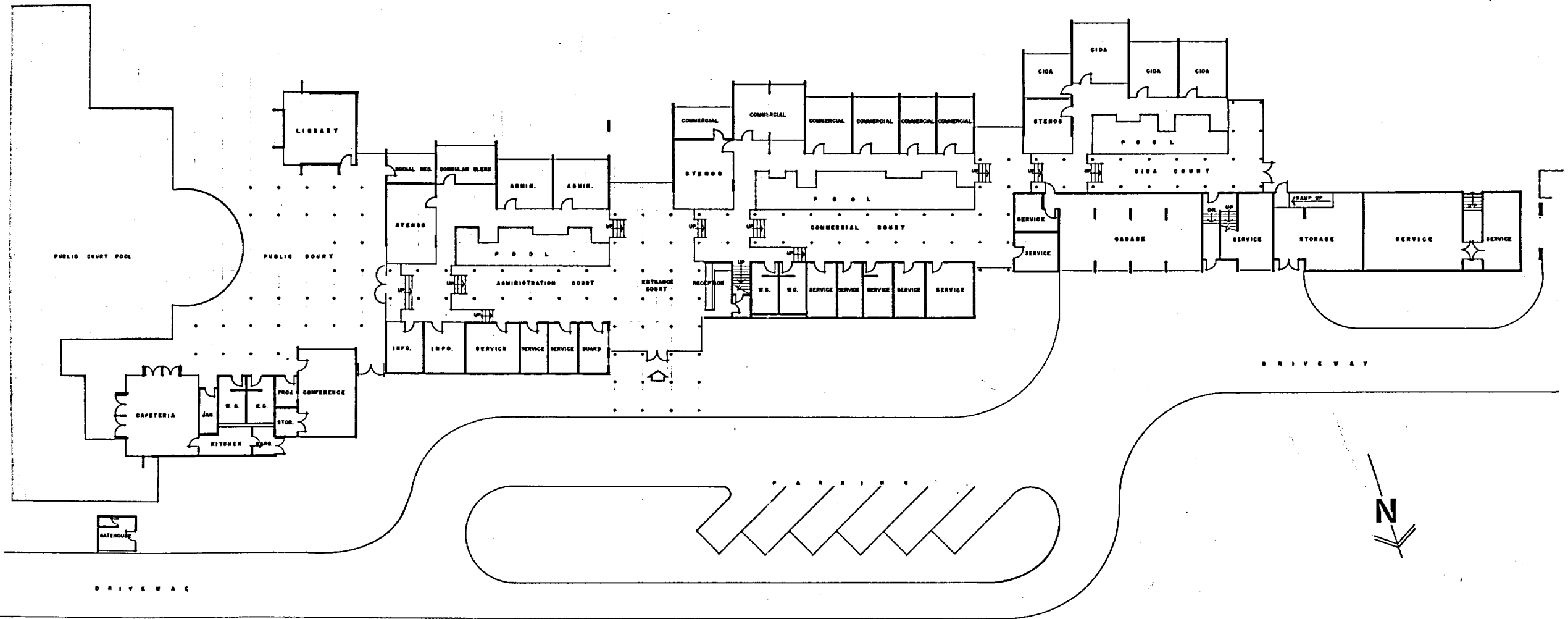


YUGOSLAVIA PLOT 18

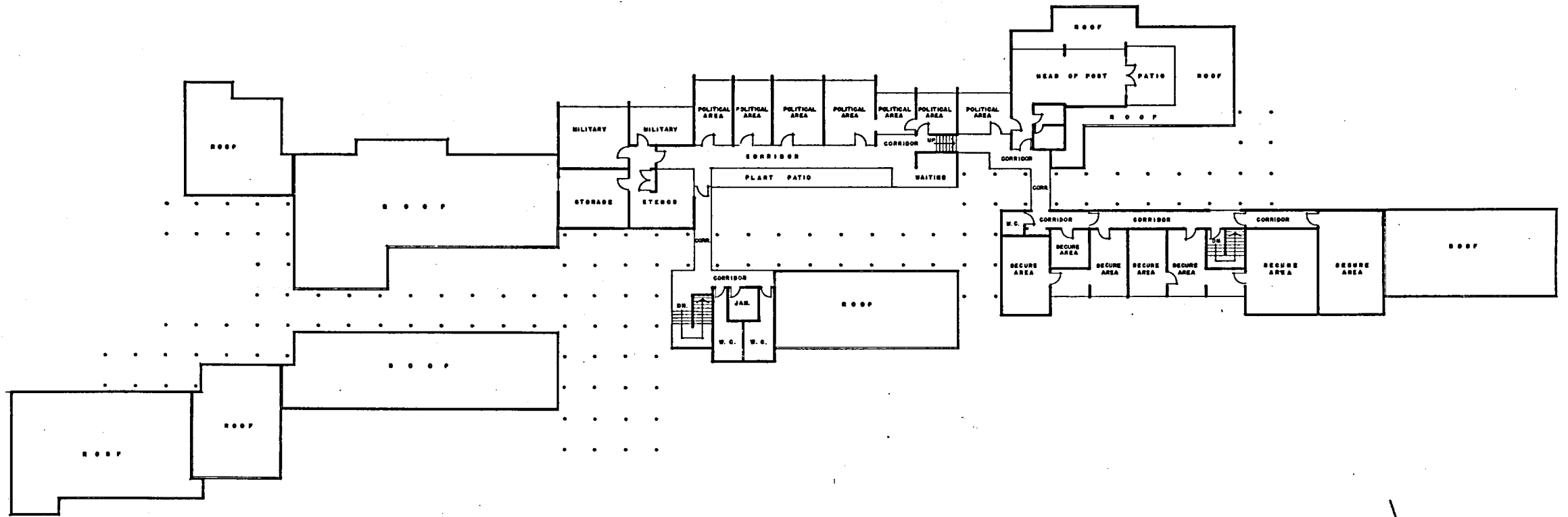


SITE PLAN

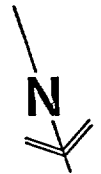
SCALE 0 1 2 3 4 5 6 7 8 9 10

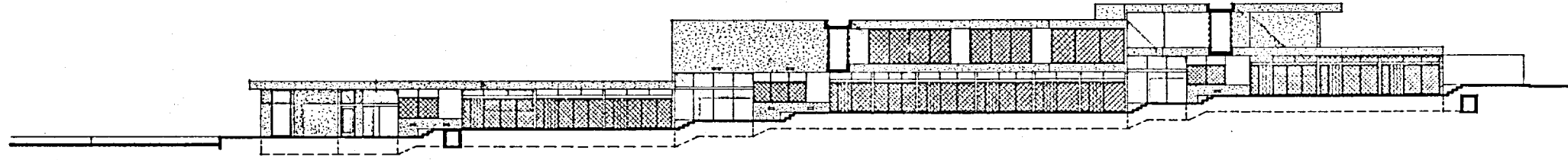


FIRST FLOOR PLAN

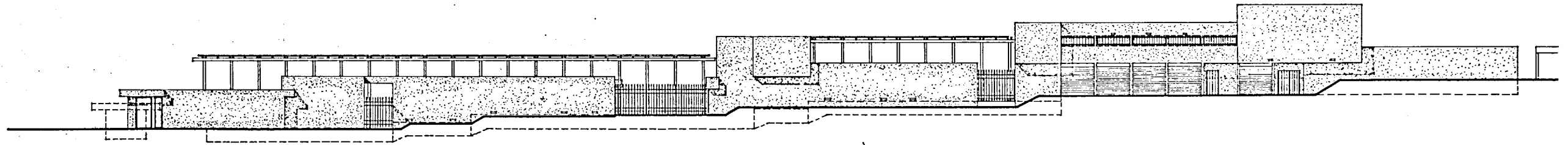


SECOND FLOOR PLAN

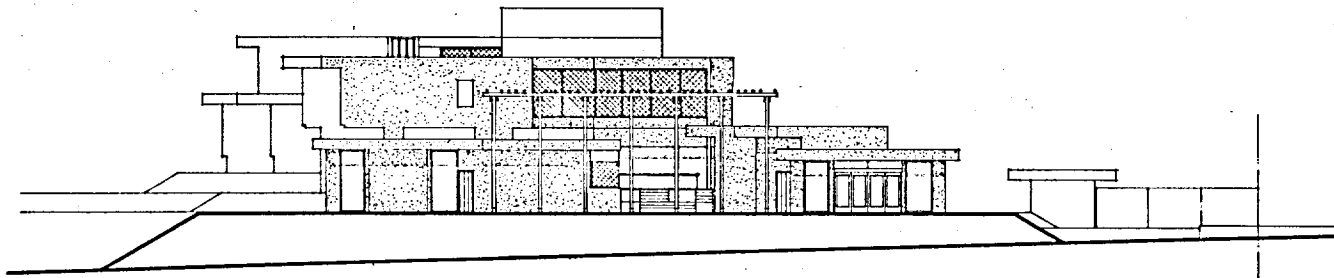




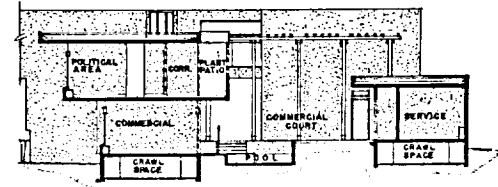
NORTH ELEVATION TO INTERIOR COURTS



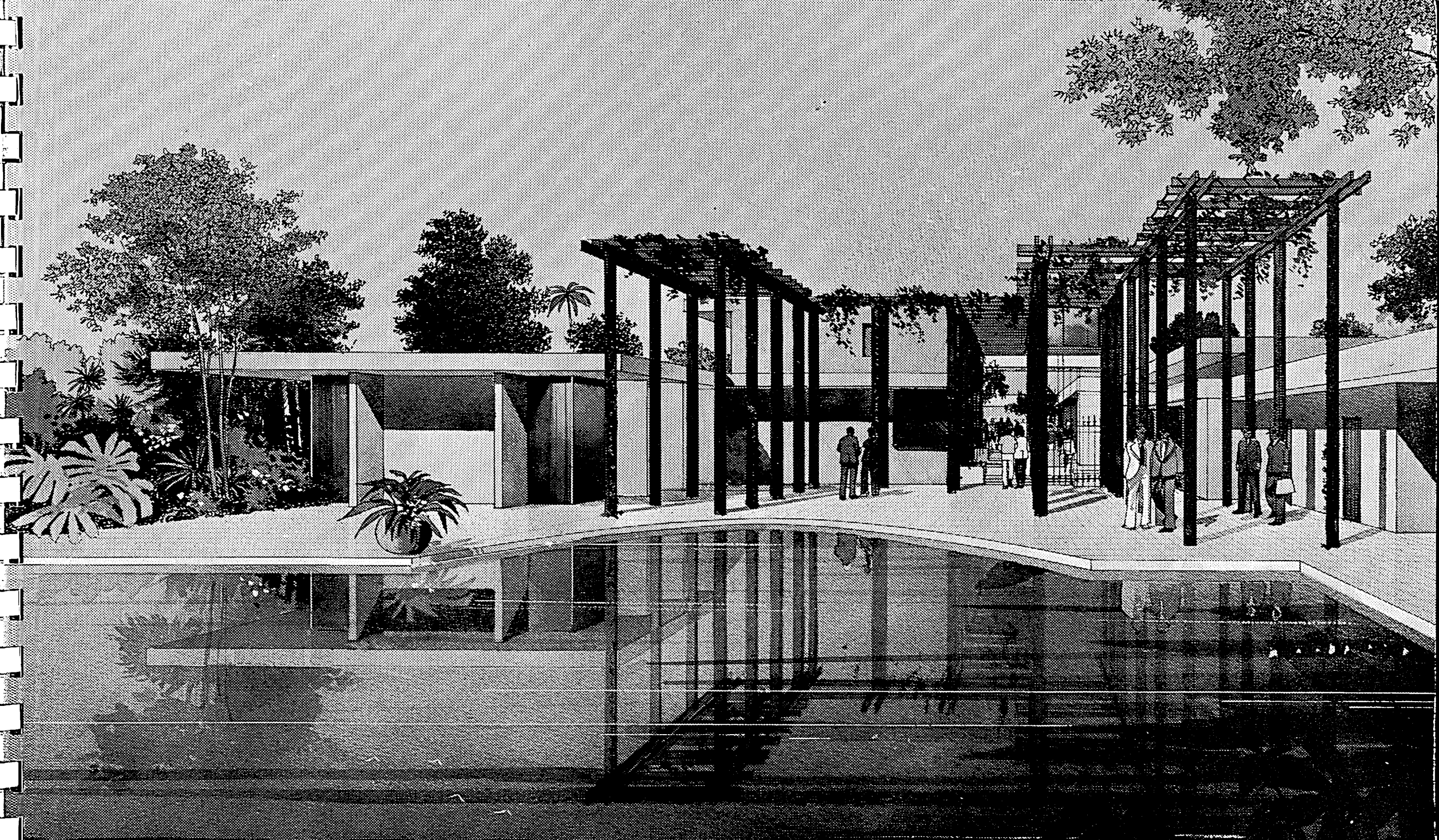
NORTH ELEVATION



EAST ELEVATION



SECTION THRO' POLITICAL AREA & SERVICE



LIBRARY E A/BIBLIOTHEQUE A E



3 5036 20042367 4

Chancery building, Canadian
embassy, Brasilia, Brazil
43270595

CA1 EA 74C31 ENG DOCS
Chancery building, Canadian
embassy, Brasilia, Brazil
43270595