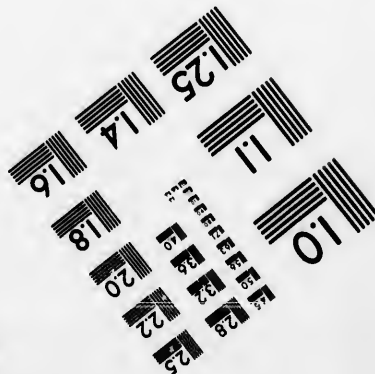
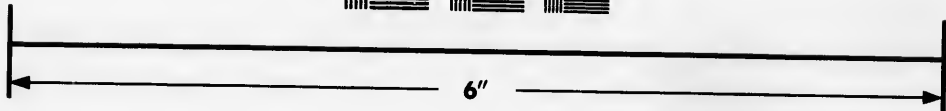
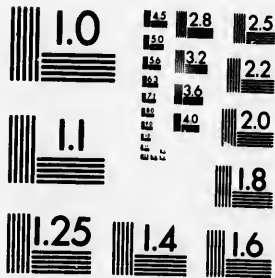


**IMAGE EVALUATION
TEST TARGET (MT-3)**



**Photographic
Sciences
Corporation**

23 WEST MAIN STREET
WEBSTER, N.Y. 14580
(716) 872-4503

**CIHM
Microfiche
Series
(Monographs)**

**ICMH
Collection de
microfiches
(monographies)**



Canadian Institute for Historical Microreproductions / Institut canadien de microreproductions historiques

© 1993

Technical and Bibliographic Notes / Notes techniques et bibliographiques

The Institute has attempted to obtain the best original copy available for filming. Features of this copy which may be bibliographically unique, which may alter any of the images in the reproduction, or which may significantly change the usual method of filming, are checked below.

L'Institut a microfilmé le meilleur exemplaire qu'il lui a été possible de se procurer. Les détails de cet exemplaire qui sont peut-être uniques du point de vue bibliographique, qui peuvent modifier une image reproduite, ou qui peuvent exiger une modification dans la méthode normale de filmage sont indiqués ci-dessous.

Coloured covers/
Couverture de couleur

Coloured pages/
Pages de couleur

Covers damaged/
Couverture endommagée

Pages damaged/
Pages endommagées

Covers restored and/or laminated/
Couverture restaurée et/ou pelliculée

Pages restored and/or laminated/
Pages restaurées et/ou pelliculées

Cover title missing/
Le titre de couverture manque

Pages discoloured, stained or foxed/
Pages décolorées, tachetées ou piquées

Coloured maps/
Cartes géographiques en couleur

Pages detached/
Pages détachées

Coloured ink (i.e. other than blue or black)/
Encre de couleur (i.e. autre que bleue ou noire)

Showthrough/
Transparence

Coloured plates and/or illustrations/
Planches et/ou illustrations en couleur

Quality of print varies/
Qualité inégale de l'impression

Bound with other material/
Relié avec d'autres documents

Continuous pagination/
Pagination continue

Tight binding may cause shadows or distortion along interior margin/
La reliure serrée peut causer de l'ombre ou de la distorsion le long de la marge intérieure

Includes index(es)/
Comprend un (des) index

Title on header taken from:/
Le titre de l'en-tête provient:

Blank leaves added during restoration may appear within the text. Whenever possible, these have been omitted from filming/
Il se peut que certaines pages blanches ajoutées lors d'une restauration apparaissent dans le texte, mais, lorsque cela était possible, ces pages n'ont pas été filmées.

Title page of issue/
Page de titre de la livraison

Caption of issue/
Titre de départ de la livraison

Masthead/
Générique (périodiques) de la livraison

Additional comments:/
Commentaires supplémentaires:

This item is filmed at the reduction ratio checked below/
Ce document est filmé au taux de réduction indiqué ci-dessous.

10X	14X	18X	22X	26X	30X
<input type="checkbox"/>	<input type="checkbox"/>	<input type="checkbox"/>	<input checked="" type="checkbox"/>	<input type="checkbox"/>	<input type="checkbox"/>
12X	16X	20X	24X	28X	32X

The copy filmed here has been reproduced thanks to the generosity of:

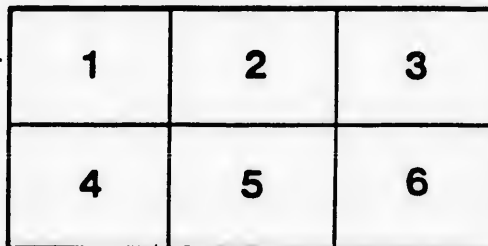
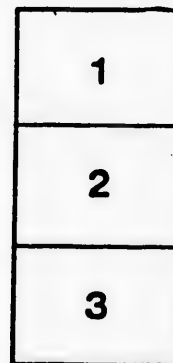
University of Guelph

The images appearing here are the best quality possible considering the condition and legibility of the original copy and in keeping with the filming contract specifications.

Original copies in printed paper covers are filmed beginning with the front cover and ending on the last page with a printed or illustrated impression, or the back cover when appropriate. All other original copies are filmed beginning on the first page with a printed or illustrated impression, and ending on the last page with a printed or illustrated impression.

The last recorded frame on each microfiche shall contain the symbol \rightarrow (meaning "CONTINUED"), or the symbol ∇ (meaning "END"), whichever applies.

Maps, plates, charts, etc., may be filmed at different reduction ratios. Those too large to be entirely included in one exposure are filmed beginning in the upper left hand corner, left to right and top to bottom, as many frames as required. The following diagrams illustrate the method:



L'exemplaire filmé fut reproduit grâce à la générosité de:

University of Guelph

Les images suivantes ont été reproduites avec le plus grand soin, compte tenu de la condition et de la netteté de l'exemplaire filmé, et en conformité avec les conditions du contrat de filmage.

Les exemplaires originaux dont la couverture en papier est imprimée sont filmés en commençant par le premier plat et en terminant soit par la dernière page qui comporte une empreinte d'impression ou d'illustration, soit par le second plat, selon le cas. Tous les autres exemplaires originaux sont filmés en commençant par la première page qui comporte une empreinte d'impression ou d'illustration et en terminant par la dernière page qui comporte une telle empreinte.

Un des symboles suivants apparaîtra sur la dernière image de chaque microfiche, selon le cas: le symbole \rightarrow signifie "A SUIVRE", le symbole ∇ signifie "FIN".

Les cartes, planches, tableaux, etc., peuvent être filmés à des taux de réduction différents. Lorsque le document est trop grand pour être reproduit en un seul cliché, il est filmé à partir de l'angle supérieur gauche, de gauche à droite, et de haut en bas, en prenant le nombre d'images nécessaire. Les diagrammes suivants illustrent la méthode.

u'il
cet
de vue
e
tion
és

PROGRAMME
OF THE
Band Tournament
AND
FIREMEN'S DEMONSTRATION.



CITY HALL.

AT THE CITY OF GUELPH,

ON

Wednesday and Thursday, June 19th and 20th, 1889.

OVER \$2,000.00 IN PRIZES.

MAYOR GOWDY, Hon. Chairman.

F. B. SKINNER, Esq., Chairman.

JAS. HOUGH, Jr., Secretary.

ADAM ROBERTSON, Chief of Fire Department.

JAS. HOUGH, JR., PRINTER, GUELPH.

380 204
GEO. B. MORRIS

& CO.,

HARDWARE

MERCHANTS.

We Keep in Stock a Full Line of
General Hardware.

PAINTS,
OILS,
VARNISHES,
GLASS,
HARVEST TOOLS,
SPORTING GOODS,
SILVER PLATE,
LAMPS,
CUTLERY, ETC.

Call and inspect before buying elsewhere.
The stand formerly occupied by
Ball & Gordon.

22 LOWER WYNDHAM ST., QUEBEC.

DAY'S
BOOKSTORE

ESTABLISHED 29 YEARS.

WALL PAPERS,
BORDERS,
CEILING DECORATIONS,
STATIONERY,
STANDARD BOOKS,
FANCY GOODS,
SHEET MUSIC,
WINDOW SHADES.

BIG STOCK, LOW PRICES.

DAY SELLS CHEAP.

H. MACDONALD,

NEXT TO O'BRIEN & KEOUGH'S,

THE

Cheapest Store

IN THE CITY.

Bargains in Felt Hats,
Bargains in Straw Hats,
Bargains in Hosiery,
Bargains in Dress Goods,
Bargains All Over the Store.

H. MACDONALD,

NEXT TO O'BRIEN & KEOUGH'S

T. D. FENWICK,

DEALER IN NEW AND SECOND-HAND

Furniture

STOVES,

RANGES, &c

THE CHEAPEST PLACE IN THE CITY.

ALL KINDS OF

HOUSEHOLD EFFECTS

BOUGHT OR EXCHANGED.

136 QUEBEC STREET.

GIVE ME A CALL.

and
gres
Wel
larg
grea
first
ing
no p
to ar
thor
In th
City
wate
and
healt
tectio
place
kinds
sion
Ontar
is we
Th
religi
quent
buildi
Un
buildi
water
again
Millin
sewin
novelt
ductio
where
eviden
stocke
whole
alway
and fu
But
is mad
are am

The City of Guelph.

THE City of Guelph, situate about fifty miles west of Toronto, on the main line of the Grand Trunk Railway, has long been known as one of the most enterprising places in Canada. Founded in 1827; an incorporated Village in 1851; incorporated as a Town in 1856, and elevated to the dignity of a City in 1879, goes to show the rapid progress which has been made. It is the County Town of the County of Wellington and draws its trade from this and adjoining counties, being the largest business centre between Toronto, Hamilton and London and the great northern lakes, while the products of its numerous factories take first rank in the markets of the world. A railway has been built connecting with the entire system of the Canadian Pacific, so that now there is no portion of the Dominion having railway facilities which is not accessible to and from Guelph. Few places are so beautifully situated or have such thorough provision made for the comfort and enjoyment of its inhabitants. In the centre of one of the most fertile sections of Ontario, the Royal City (as it is familiarly known) with its hills and its valleys, having the waters of the river Speed meandering through them; its small parks here and there; its avenues and beautiful residential sites; its cleanliness and healthfulness; its pure water and excellent lighting; its police and fire protection with many other advantages make it one of the most desirable places to live in. A large Park and buildings are provided where all kinds of athletic sports and games can be indulged in, and to which excursion parties can resort and find all necessary accommodation. The Ontario Agricultural College is within easy distance of the City Hall and is well worth a visit.

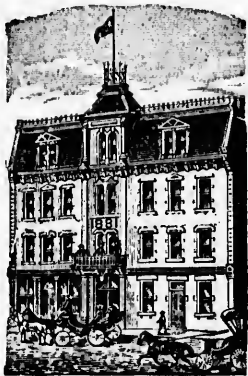
The population of Guelph is now nearly 11,000 persons who possess religious and educational advantages of the highest character. Not infrequently do visitors remark that the churches, schools and other public buildings would do credit to places double the size of Guelph.

Unlimited quantities of building material are at hand, and land for building purposes can be obtained at moderate prices, while the system of waterworks and fire protection appliances afford the best possible security against loss to property and secure the most favorable rates of insurance. Milling is carried on very extensively, and manufactures of pianos, organs, sewing machines, carpets, wool goods, carriage goods, lawn mowers, and novelties, furniture, agricultural implements, stoves and other foundry productions, are pushing trade to the four corners of the earth. Perhaps nowhere is more enterprise manifested by the retail trade than in Guelph, evidence of which can be seen in the large number of magnificent stores all stocked with leading lines of goods, and in some instances a healthy wholesale trade is gradually being developed. The travelling public can always be sure of first-class accommodation, as the hotels are well fitted and furnished and are conducted in a quiet and orderly manner.

But amid all this the true spirit of philanthropy is abroad and provision is made for the sick and destitute, there being two hospitals, both of which are among the best institutions of this kind in the Province.

WESTERN HOTEL

MACDONNELL STREET GUELPH.



—♦—THE BEST—♦—

ONE DOLLAR PER DAY
HOTEL IN THE CITY.

BEST BRANDS OF

LIQUORS AND CIGARS

ALWAYS KEPT.

STABLING FOR 400 HORSES. TWO HOSTLERS.

JOHN McATEER, PROP.

W. McLaren & Co.,

Manufacturers
and
Dealers in

Boots and Shoes

Wyndham Street
Corner
St. George's Square.

The
Leading Shoe Store
Of Guelph.

ESTABLISHED 1870.

TELEPHONE 51.

JAMES HEWER,

Produce and Commission

MERCHANT,

45 MACDONNELL ST. EAST, GUELPH

WHOLESALE AND RETAIL DEALER IN
ALL KINDS OF

Farm and Garden Seeds,

FLOUR, OATMEAL,

MILL FEEDS OF ALL KINDS,

POTATOES, BALED HAY, ECT.

The highest market price paid for wool,
hides, sheepskins, furs and grain at all
times. Give me a call.

ROYAL CITY DRUG STORE.

Masonic Block, Next to Wellington Hotel.

CALL and see us if you require Hair Brushes, Tooth Brushes, Nail Brushes, Clothes Brushes, Combs, Sponges, Perfumes, Whisks and all articles kept in a First-Class Drug Store. Physicians' and family prescriptions put up while you wait with accuracy.

THOS. S. PETRIE, Chemist.

CITY OFFICIALS.

MAYOR.

Thomas Gowdy, Esq.

ALDERMEN.

St. Patrick's Ward.—H. Hatch, John Kennedy, Thos. Pepper.
St. George's Ward.—C. Kloefer, George Howard, Dr. Howitt.
St. David's Ward.—J. Kelly, John Kilgour, Robt. Barber.
St. John's Ward.—S. J. Taylor, Dr. Kennedy, Sol. Dawson.
St. Andrew's Ward.—W. H. Wardrope, Peter Kerr, D. Scroggle.
St. James' Ward.—John A. Lamprey, Wm. Russell, P. Hartnett.

Richard Mitchell, City Clerk.
Ed. Harvey, Treasurer.
D. Guthrie, City Solicitor.
Thos. Saunders, Police Magistrate.
A. Robertson, Chief of Fire Department.
F. W. Randall, Chief of Police.
Capt. Clark, Health Inspector.

→ G. A. RICHARDSON, ←

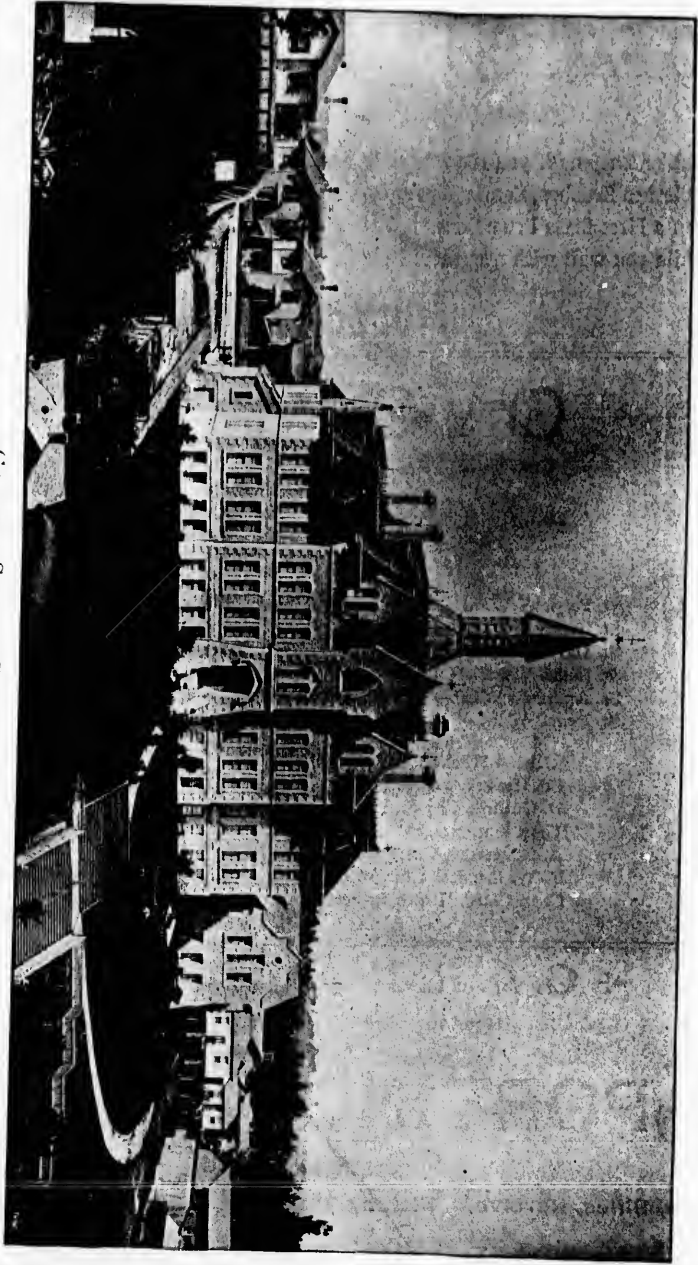
Headquarters for all Kinds of

SPORTING GOODS

INCLUDING

Guns, Rifles, Revolvers, Fishing Tackle, Hammocks and a Full Line of General Hardware.

UPPER WYNDHAM ST. + + GUELPH.



From Photo. by Burgess & Son.

CENTRAL SCHOOL, GUELPH, ONT.

J
D
D

May

J

F. H.

Jas. H.

FI

89 U

J. S. ROGERSON

—FOR—

DRESS GOODS, MILLINERY,

STAPLE AND FANCY DRY GOODS.

DRESS AND MANTLE MAKING.

98 Upper Wyndham Street, Guelph.

TOURNAMENT COMMITTEES.

EXECUTIVE.

Mayor Gowdy, Hon.-Chairman; F. B. Skinner, Esq., Chairman; Jas. Hewer, Esq., Vice-Chairman; Jas. Hough, Jr., Secretary; T. D. Fenwick, Treasurer; Capt. Clark, A. Robertson, W. Yule, Geo. Hewer, John Colson, T. W. Hastings, Chas. Spalding, C. Peter, C. Chase, W. Copeland, W. Spalding, W. Galpen, W. Johnson.

FINANCE.

John Colson, Chairman; F. B. Skinner, Jas. Hough, Jr., Jas. Hewer, Capt. Clark, A. Robertson, T. D. Fenwick.

PRINTING.

A. Robertson, Chairman; Jas. Hough, Jr., T. W. Hastings, C. Spalding, C. Peter.

PROGRAMME.

F. B. Skinner, Chairman; Mayor Gowdy, Jas. Hewer, Jas. Hough, Jr., T. D. Fenwick, Capt. Clark, A. Robertson, W. Yule.

RAILWAYS.

Jas. Hough, Jr., Chairman; Mayor Gowdy, Capt. Clark, A. Robertson.

GROUNDS.

Jas. Hewer, Chairman; Geo. Hewer, W. Copeland, W. Galpen, W. Spalding, W. Johnson, C. Chase, C. Spalding.

TRADES PROCESSION.

Capt. Clark, Chairman; F. B. Skinner, A. Robertson, J. W. Colson, Jas. Hewer, T. D. Fenwick.

ITALIAN WAREHOUSE.

HENRY LOCH

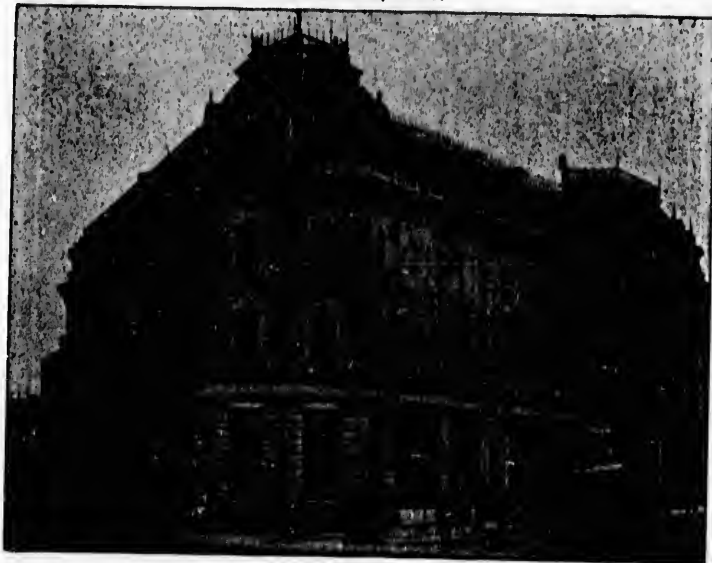
DEALER IN

FINE GROCERIES, CHINA.

GLASSWARE, CROCKERY, ETC.

89 UPPER WYNDHAM ST., - GUELPH, ONT.

WELLINGTON HOTEL,
GUELPH, ONT.



FINEST HOTEL IN THE CITY.

EVERYTHING FIRST-CLASS.

DAVID MARTIN, PROP.

FOR THE BEST AND CHEAPEST
BOOTS and SHOES

GO TO

BROWN'S

THE ONLY FACTORY AND THE LARGEST STOCK IN
THE ROYAL CITY.

GO STRAIGHT TO HEADQUARTERS.

FACTORY AND STORE:
UPPER WYNDHAM STREET, GUELPH.

J. T. BROWN.

Goldsmith Hall,

St. George's Square, Guelph.

The Fine Watch and Jewellery Repair Shop
of Guelph.

Repairing for the Trade at Usual Prices.

W. S. Smith.

PROGRAMME.

FIRST DAY—MORNING.

- 1.—General Decoration of the City by the Merchants, Manufacturers, and Citizens in general.
- 2.—Reception of Visiting Bands, Firemen, etc., etc.
- 3.—Several processions of Bands, Firemen, etc., from the Railway Station to the different Hotels.

The City Band will meet all trains and escort
visitors to hotels, etc.

The Best and Right Place for • •

PICTURES

Of all Kinds,

Picture Frames, Picture and Room Mouldings,
Cornice Poles,

Chains, Gords,

• * •

Wires, Nails, Etc.,

Artists' Materials—A Full Stock Always Fresh and Good.
Fancy Goods—Suitable for Presents.

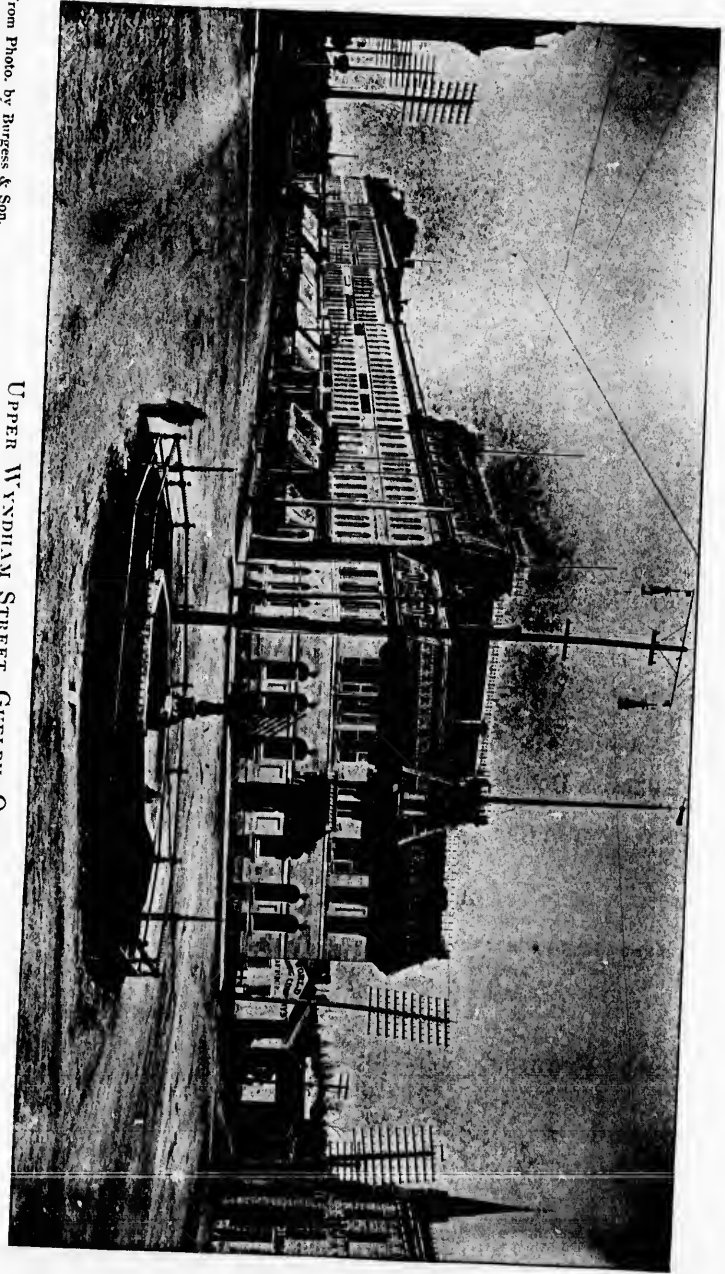
WATERS BROS., 25 Wyndham St.

EVERYTHING FIRST-CLASS.

ES

CK IN

RS.



From Photo, by Burgess & Son.

UPPER WYNDHAM STREET, GUELPH, ONT.



J

G

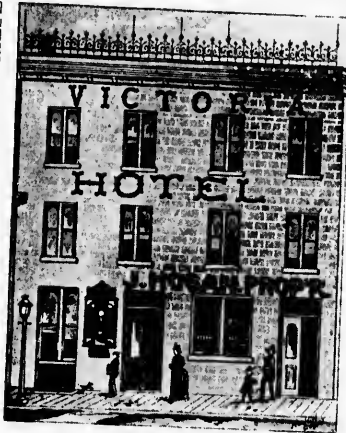
F

Wine,

W

← VICTORIA HOTEL →

Guelph, Ont.



The most Central Hotel in the City,
near Post Office, Customs
Office, Principal Banks,
Court House, etc.

NEWLY FURNISHED AND
RENOVATED.

TERMS, - - \$1.00 Per Day.

Good Stabling and Attentive
Hostlers.

John Hogan, Prop.

GUELPH WINE VAULTS,

REAR ALMA BLOCK, WOOLWICH STREET.

THE
FINEST  **GOODS**

ONLY KEPT IN STOCK.

Wine, Brandy, Whiskey, Dublin Stout, Bass Ale, Labatt's
Ale and Porter in pints and quarts, Sleeman's Ale in
quarter and half barrels and bottles.

SPECIAL PRICES TO HOTELS.

WATSON BROS., PROPS.

STYLISH CLOTHING.

GENT'S FURNISHINGS.

Cormack & Keleher,
Merchant Tailors.



London

AND

New York

HATS.



Broadway Styles,

Latest Out.

NOBBY NECKWEAR.

UNDERCLOTHING.

MUSIC!

MUSIC!!

MUSIC!!!

KELLY'S MUSIC STORE

OPPOSITE THE POST OFFICE

HEADQUARTERS FOR

BELL'S PIANOS AND ORGANS

DIRECT IMPORTER OF STRING INSTRUMENTS AND MUSICAL
MERCHANDISE.

THE ○ ONLY ○ MUSIC ○ STORE ○ IN ○ THE ○ CITY.

Cornets, Violins, Guitars and Drums at wonderfully low prices. A full
stock of Vocal and Instrumental Music, Music and Instruction Books.

PIANOS AND ORGANS SOLD ON THE INSTALMENT PLAN.

REMEMBER THE PLACE. TOVELL'S BLOCK, OPP. POST OFFICE.

C. W. KELLY.

Law

LEC

4.—G
k

5.—Fi
3

6.—Ex
A

7.—Gr
C
fo

8.—Ch

9.—Ex

CHOIC

ICE

WAT

DELIC

FURNISHINGS.



TS.

Out.

DERCLOTHING.

MUSIC!!!

ORE

GANS

SICAL

E CITY.

rices. A full
ion Books.

PLAN.

CE.

LY.

HARVEY & CO.,

Lawn Mowers, Lawn Shears, Cotton and Rubber Garden Hose
Hammocks and House Furnishings.

SOLE AGENTS FOR
LEONARD'S HARDWOOD REFRIGERATOR

HARDWARE.

23 LOWER WYNDHAM ST., GUELPH.

PROGRAMME.

FIRST DAY—AFTERNOON.

- 4.—Grand Proccsion of all the Visiting Bands, Firemen, etc. from the Market Square to Exhibition Park.
- 5.—First-Class Band Competition, 1st prize, \$275.00; 2nd prize, \$150.00; 3rd prize, \$100.00.
- 6.—Exhibition of Fancy Drill, Sword Exercise, etc., by the Guelph Amateur Athletic Association, under the leadership of Capt. Clark.
- 7.—Grand Gymnastic Exhibition by Barnett and Simcoe, late of Pueblo's Circus, Havana, Cuba, consisting of Trapeze and Horizontal Bar Performances, etc.
- 8.—Chas. Simcoe, in his Great Fire Act.
- 9.—Exhibition of Speed by Guelph Fire Brigade.

CHOICE CONFECTIONERY.

FANCY CAKES AND PASTRY.

ICE CREAM.



WATER ICE.

GEO. WILLIAMS,

BAKER AND CONFECTIONER,

DEALER IN FANCY GROCERIES

FRUIT, FISH, ETC.

81 AND 83 UPPER WYNDHAM ST., GUELPH.

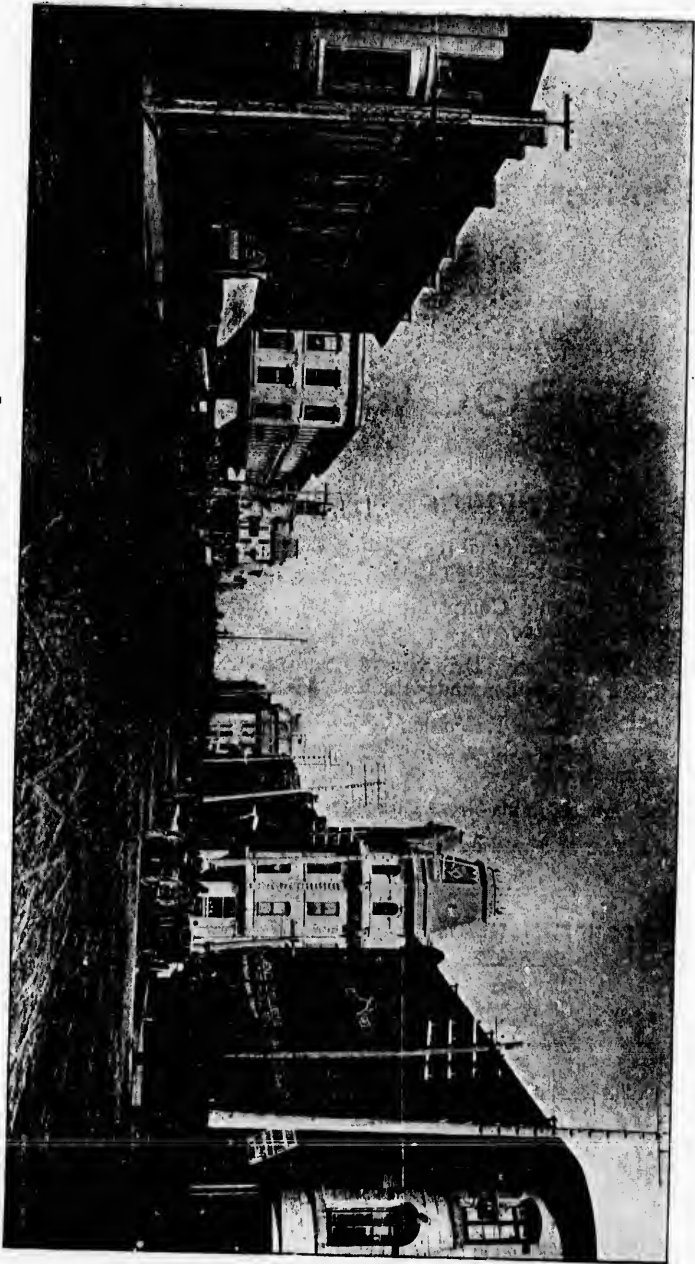
SODA WATER.



DR. SWIFT'S
ROOT BEER.

DELICIOUS FRUITS.

FINEST GROCERIES.



From Photo, by Burgess & Son.

LOWER WYNDHAM STREET, GUELPH, ONT.

J

Fine

SU

Low

A

GU

•

to the
19th
to inf
have

= S

Of B

NO. 20

JACKSON & HALLETT,

✧ GROCERS ✧

IMPORTERS OF

Finest Congou and Souchong,
Japan and Assam,
Finest Young Hyson

TEAS.

COMPLETE STOCK OF

SUGARS AND GENERAL GROCERIES.

✧ WHOLESALE AND RETAIL. ✧

Lower Wyndham St.,

Guelph, Ont.

A HEARTY WELCOME.

+ THE +

GUELPH SHOE CO.

EXTENDS a Hearty Welcome to all visitors to the Band Tournament on the 19th and 20th of June, and begs to inform them that they will have a

= SPECIAL SALE =

Of BOOTS AND SHOES on those dates at their Store.

NO. 20 LOWER WYNDHAM STREET,
HEPBURN'S OLD STAND.

Central Hotel,

MARKET SQUARE, GUELPH

Finest Brands of Liquore and Cigare
Always on Hand.

40 BED ROOMS.

TERMS. - - - - \$1 PER DAY.

John Doran, Prop.

STEWART

And CO.,

HATTERS



AND

GENTS' FURNISHINGS

THE LATEST STYLES OF ALL
GOODS SHOWN.

Our
Specialty. ORDERED SHIRTS *A Faultless
F.t.*

STEWART & CO.

D. KENNEDY & SON

BUILDERS AND CONTRACTORS,

PROPRIETORS OF

GUELPH MARBLE WORKS

AND MANUFACTURERS OF

THE CELEBRATED WHITE LIME.

We supply all classes of Cut Stone,
Portland and Canadian Cements,
Plaster Paris, Fire Brick, Fire
Clay and all builders' supplies

TELEPHONE 104.

OFFICE, . . . MARKET SQUARE.

OLDEST DRUG STORE IN GUELPH.



Our Stock of English, French and
American

PERFUMES,

HAIR, NAIL AND TOOTH BRUSHES,

DRESSING COMBS,

← AND TOILET ARTICLES →

Is very Large and Carefully
Selected.

Hand Mirrors, Sponges and
Toilet Soaps in Great
Variety.

Prescriptions Carefully Prepared.

W. G. SMITH & CO.,

DISPENSING CHEMISTS,

Night Bell on Door.

GUELPH.

DIY & SON

CONTRACTORS,

WORKERS OF

BLE WORKS

FACTURERS OF

WHITE LIME.

es of Cut Stone,
adian Cements,
re Brick, Fire
ders' supplies

E 104.

MARKET SQUARE.

GUELPH.

ah, French and
an

MES,

MOOTH BRUSHES,

COMBS,

ARTICLES →

d Carefully

d.

ponges and
in Great
y.

fully Prepared.

H & CO.,

EMISTS,

GUELPH.

→→→→ **A. J. Little & Co.,** ←←←←

The Reliable and Stylish

Millinery and Dress Goods

→→→ House of Guelph. ←←←

77 1/2 Upper Wyndham Street.

PROGRAMME.



FIRST DAY—EVENING.

- 10.—Grand Parade from Market Square to Exhibition Park.
- 11.—Band Concert by the 1st and 2nd prize Bands, assisted by the Guelph City Band.
- 12.—Grand Illumination of the Park by different lights, 800 Chinese lanterns, etc., under the supervision of Prof. Hand & Co.
- 13.—Cornet Playing Competition, with Band Accompaniment, for an Imperial Cornet, valued at \$80, given by Whaley, Royce & Co., Toronto.
- 14.—Grand Gymnastic Performance by Barnett and Simcoe.

*** Jacob Bernhardt & Co., ***

Dealer in Foreign and Domestic

. . . + **Cigars and Tobacco,** + . . .

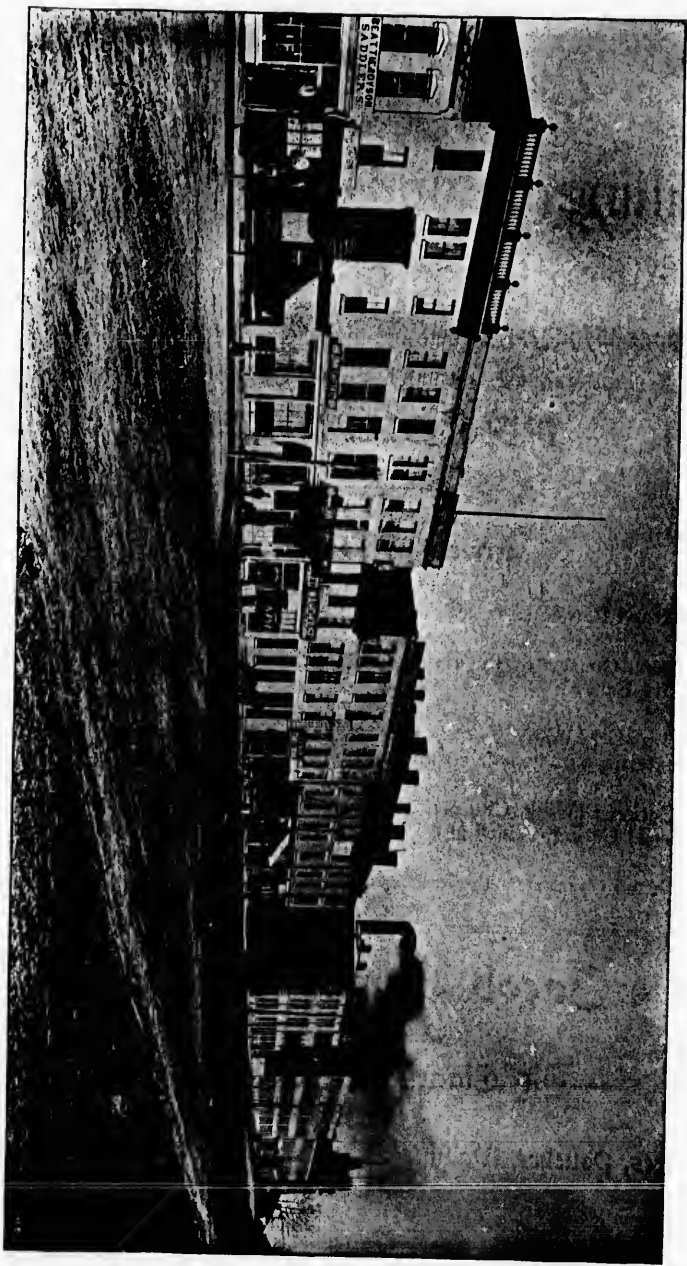
finest Brands of

* **Pipes, Pouches, Walking Canes, and Tobacconists Sundries,** *

26 Lower Wyndham Street,

Guelph, + + + Ontario.

. . . Call and See us. . . .



From Photo. by Burgess & Son.

CARDEN STREET, FACING MARKET SQUARE, GUELPH, ONT.

E

Ja

R

Preside

HEAD

European Hotel AND Restaurant

NOS. 9 AND 11 MARKET SQUARE.

OPPOSITE CITY HALL.

GUELPH, ONTARIO.

NEWLY FURNISHED AND ENLARGED.

First-Class Accommodation.

MEALS AT ALL HOURS.



Jas. Johnson, - - - Proprietor.

THE MUTUAL FIRE INSURANCE CO.

OF THE

COUNTY OF WELLINGTON.

ESTABLISHED 1840.

President, FRED. W. STONE, Guelph.

Vice-President, GEO. RANDALL, Waterloo.

DIRECTORS.

James Goldie, Guelph.
F. J. Chadwick, Guelph.
John Harris, Guelph.

George Hespeler, Galt.
J. R. Wissler, Salem.
Charles McMillan, Guelph.

CHAS. DAVIDSON, Secy.-Treas. and Manager.

H. KITSON, INSPECTOR.

HEAD OFFICE,

MARKET SQUARE, GUELPH.

ESTABLISHED 1848.

Fine Watch Repairing a Specialty.



All the Latest Designs in New York Jewel-
lery Received Weekly.

SAVAGE'S
WATCH, CLOCK AND SPECTACLE ESTABLISHMENT.
19 WYNDHAM ST., GUELPH.

GO TO GEMMELL'S
Extensive Steam Dye Works,
28 WEST MARKET SQUARE, GUELPH.

Equipped with the very best Machinery procurable for Cleaning,
Dying and Finishing.

Gents' Suits Cleaned and Pressed on the Shortest Notice.

All kinds of Ladies' and Gents' Wearing Apparel Cleaned, Dyed
and Finished to look like new.

T. H. GEMMELL, - PROPRIETOR.

All the Latest Designs in New York Jewelry Received Weekly.

IT WILL PAY YOU TO GO DIRECT TO
77 UPPER WYNDHAM ST., GUELPH.

BEFORE

GENERAL DRY GOODS.

WE GUARANTEE
SATISFACTION
EVERY TIME. A. J. LITTLE & Co.

PROGRAMME.

SECOND DAY—MORNING.

- 15—Reception of visiting Bands, Firemen, etc., and escorting visitors to Hotels.
- 16—Grand Trades Procession, consisting of all the Manufacturers, Merchants, Dealers, City Council, Board of Education, Societies, Military, Capt. Clark's Class, Firemen, Bands, Citizens, etc. This procession will eclipse anything heretofore given in this part of the Province.

CAPT. W. CLARK, GRAND MARSHAL.

ROUTE:—The Procession will form on the Market Square, and proceed to G. T. R. Station, thence along Macdonnell St. to Norfolk St., along Norfolk St. to Woolwich St., along Woolwich St. to Wyndham St. and along Wyndham St. to Market Sq.

If you want Solid Comfort at the Tournament
Use a Bottle of

A. B. PETRIE'S

CORN SOLVENT.

It Gives Relief Every Time.

PREPARED ONLY BY A. B. PETRIE.

MENT.

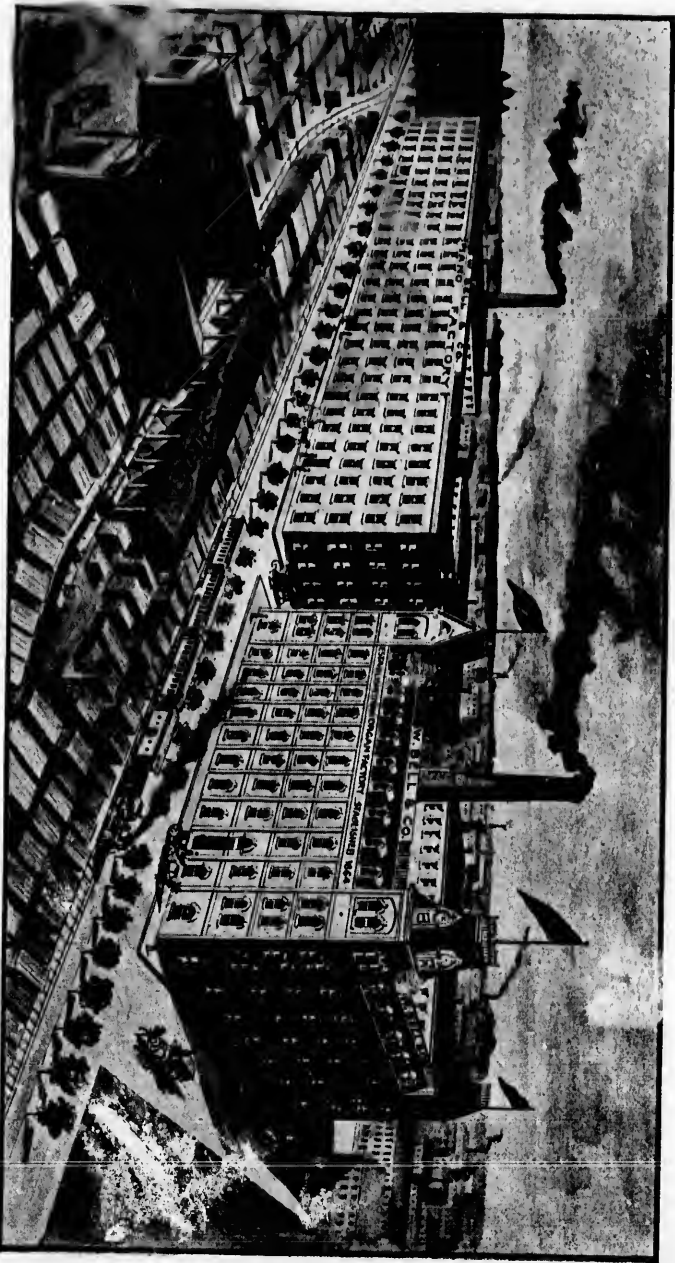
orks,

r Cleaning,

st Notice.

aned, Dyed

TOR.



FACTORIES OF THE BELL ORGAN AND PIANO CO. GETTYSBURG, PA.

8
e
F
F
G

GUELPH CLOTH HALL.

SHAW & GRUNDY,
MERCHANT TAILORS

AND

GENTS' FURNISHING ESTABLISHMENT

LOWER WYNDHAM STREET,

GUELPH, - - - ONTARIO.

ROBT. MITCHELL,
FAMILY GROCER,

DEALER IN

FINE CHINA GOODS.

GLASSWARE AND CROCKERY.

21 LOWER WYNDHAM ST.,

GUELPH, - - - ONTARIO.

1889.

ESTABLISHED

1846.

JOHN HARRIS

WHOLESALE AND RETAIL MANUFACTURER OF

Pure Candy

BAKER, CONFECTIONER

AND GROCER.

MARKET SQUARE, GUELPH,

D. MCKENZIE'S SHOEING FORGE,

WOOLWICH STREET,



OPPOSITE WELLINGTON HOTEL.

The Leading Shoeing Forge in the City.
Personal attention paid to interfering
horses or lameness in the foot.

D. MCKENZIE.

E. H. HUTTON, GENERAL INSURANCE AGENT.

REPRESENTING:

Guardian,
Lancashire,
Phoenix,
Fire Ins. Association,
Waterloo Mutual,
Huron and Middlesex,
Travellers of Hartford.

OFFICE:

St. George's Square,
GUELPH.

WM. DYSON, SADDLER.



For a Really First-Class Make
in

SADDLES,
HARNESS,
TRUNKS,
WHIPS,

HORSE CLOTHING,
AND
HORSEMEN'S GENERAL
OUTFIT.

THE BEST TO BE PROCURED AT

W. DYSON'S,

OPPOSITE WELLINGTON HOTEL.

Special Attention to Fine Work. Repairing Promptly
Attended to. Horses Neatly Fitted.

17—Pr
18—Se
19—Ho
20—Ho
21—Str
To
22—Be
23—Fir
par
24—Ba
Ba
by
25—Op
26—Far
Lus
27—Op
2nd
28—Sho
Ber
29—Mar
Mar
30—Exh
by t
31—Gra
32—Tri

Those

Pr

Who is

The ab

TON,
AL
NCE -
r.

TING:

association,
Hlexex,
of Hartford.

quare,

SON,
R.



Class Make

S,
WHIPS,
ING,

NERAL

URED AT
N'S,

OTEL.
pairing Promptly
Fitted.



CALL AT



Clark's

THE

Jeweller,

FOR

FINE WATCHES AND JEWELLERY.

PRICES RIGHT EVERY TIME.

75 UPPER WYNDHAM STREET, THREE DOORS NORTH OF POST OFFICE, GUELPH.

PROGRAMME.

SECOND DAY - AFTERNOON.

- 17—Procession of Bands and Firemen from Market Square to Exhibition Park.
- 18—Second Class Band Competition; 1st prize \$150; 2nd, \$100; 3rd, \$50.
- 19—Hose Reel Race; 1st prize \$75; 2nd, \$40; 3rd, \$20.
- 20—Hook and Ladder Race; 1st prize \$75; 2nd, \$40; 3rd, \$20.
- 21—Straightaway Hose Reel Races, 400 yards, for Firemen, Silver Trumpet, given by Toronto Silver Plate Company.
- 22—Best Dressed Fire Company; Handsome Silver Cup.
- 23—Firemen's Individual Race, 100 yards, open to all bona fide members of visiting Companies; 1st prize \$8; 2nd, \$4.
- 24—Bandsmen's Individual Race, 100 yards, open to all bona fide members of visiting Bands; 1st prize, Family Bible, by J. W. Lyon, value \$15; 2nd, Gold Pen and Holder by Barber & Ellis, Toronto, value \$5.
- 25—Open 100 Yards Race; 1st prize \$8; 2nd, \$4, cash.
- 26—Farmer's Race, 200 yards; 1st prize Handsome Photograph Album, value \$3, by Luscombe's Fair, Guelph; 2nd, \$1 cash.
- 27—Open Quarter Mile Race; 1st prize Bedroom Suit by Burr Bros., Guelph, value \$25; 2nd, Lawn Mower by T. Gowdy & Co., value \$8.
- 28—Shoemaker's Race for Side of Sole Leather, "Eagle" Brand, by Breithaupt & Co., Berlin.
- 29—Married Women's Race, 100 yards, for Baby Carriage, value \$18, given by Anthes Manufacturing Company, Berlin.
- 30—Exhibition of Manual and Firing Exercises by Capt. Clark's Highland Cadets, headed by the Boy Piper, Master Willie Thain.
- 31—Grand Gymnastic Exhibition by Barnett and Simcoe.
- 32—Trial of Speed by the Guelph Fire Brigade.

Those who suffer from Pains in the Eyes and Head and Weak Eyes should consult

Pringle, the Jeweller

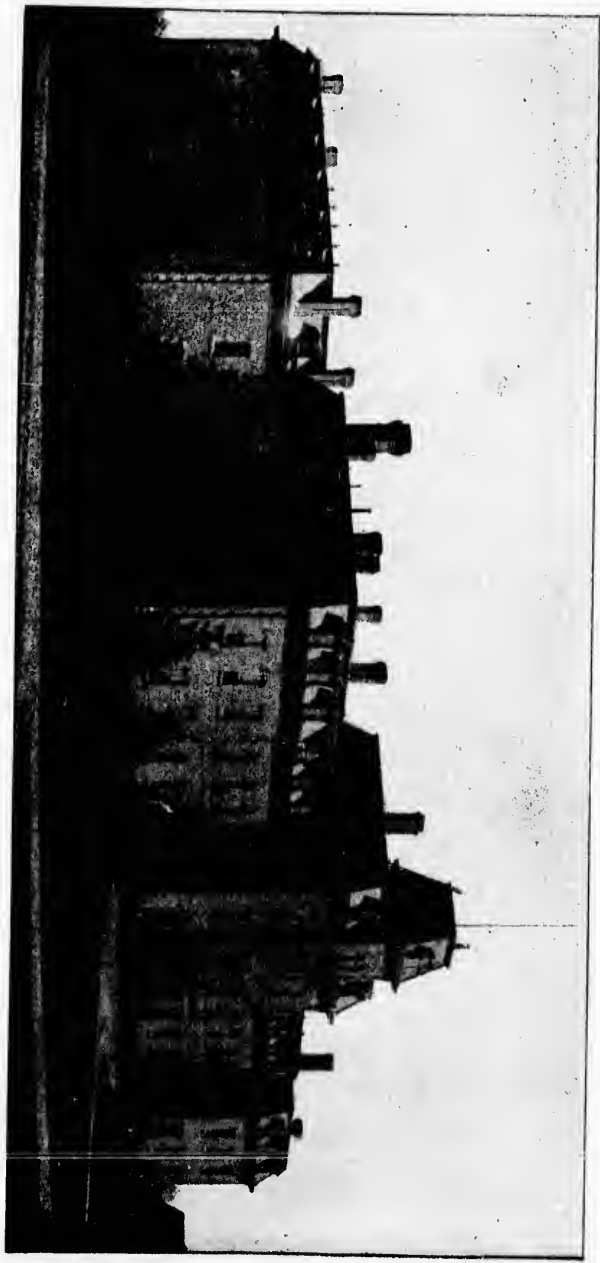
OF GUELPH,

Who is a Graduate of New York Ophthalmic College, and thoroughly Competent to Fit Every Sight.

The above Troubles can often be Removed by Properly Fitted Spectacles.

NO CHARGE FOR TESTING THE SIGHT.

ONTARIO AGRICULTURAL COLLEGE, GUELPH.



A

and
for c
He k
confi

and C

GR

H

O'E

Ar

Co

Is the
Des
C

LOW

A Flourishing Enterprise

AT 85 UPPER WYNDHAM ST.

TWO years ago Mr. FRANK DOWLER purchased the stock of the Jones Dry Goods Co., and since that time he has built up a large and ever increasing trade. The reasons for which are that he sells strictly for cash, and therefore at closer prices than those who give credit can sell. He keeps only reliable goods, and by straight, square dealing has gained the confidence of the people.

THE principal lines handled are Silks, Dress Goods, Millinery, Mantles, Ladies' and Gents' Furnishings, Merchant Tailoring, and General Staple Goods.

THE Motto is Large Sales, Small Profits, a Satisfied Public and a Secure Trade.

BE SURE AND VISIT THE
GREAT CASH HOUSE OF GUELPH
85 UPPER WYNDHAM ST.

Frank Dowler.

O'Brien & Keough's

POPULAR

Art Furniture

WAREROOMS,

Lower Wyndham St., Guelph,

Is the place to buy Furniture of Every
Description, Carpets, Upholstered
Goods, Fancy Mouldings, Pic-
ture Frames, etc., at the

LOWEST PRICES FOR CASH.

HEADQUARTERS

FOR SUMMER

HARDWARE

Ice Cream Freezers, all sizes.
Refrigerators, a large and new stock.
Lawn Mowers. Lawn Rollers.
Lawn Rakes. Rubber and Cotton Hose.
Harvest Tools. Barb and other Fencing Wire.
Binding Twine.

JOHN M. BOND & Co.

DIRECT HARDWARE IMPORTERS,
GUELPH, - ONTARIO

K. S. TOWNSEND,

GUELPH,

WHOLESALE AND RETAIL DEALER IN
FOREIGN AND DOMESTIC

Fruits and Vegetables

FISH, OYSTERS, ETC.

FRUITS HANDLED ON COMMISSION.

CALL AT

Townsend's Large Booth

ON THE GROUNDS AND GET THE GREAT
AMERICAN DRINK

"MILK SHAKE."

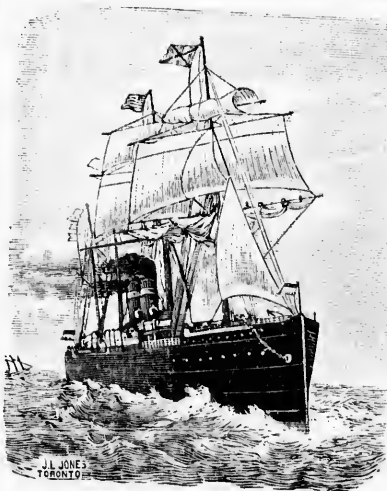
GRAND CENTRAL SHAVING PARLOR.

Where Everybody goes for a
Nice Hair-Cut or Shave.

The only First-Class Shop in the
City.

John A. Hudson, Prop.,
St. George's Sq., Guelph.

JOHN DAVIDSON,



FIRE, LIFE

AND

ACCIDENT

INSURANCE,

AND

STEAMSHIP

AGENCY.

All the Leading Lines Represented.

OFFICE, MARKET SQUARE, GUELPH, ONT.

CE

Chis

HOT AN

- 33—Pro
- 34—Bar
- Clax
- 35—Ban
- 36—Gyn
- 37—Con
- Co.,

- 1. Royal
- 2. Balloon
- 3. Pig an
- 4. Flight
- 5. Device
- ATIO
- 6. Illumin
- Bengal
- 7. Grand
- 8. Mine o
- 9. Device
- 10. Balloon
- 11. Illumin
- 12. Flight
- 13. Device-
- 14. Royal S
- 15. Flight
- 16. Rockets
- 17. Monster
- Motto.
- 18. Flight
- 19. Device-
- 20. Descent
- 21. Large C
- 22. Nest of
- 23. Flight
- 24. Flight
- 25. Flight

Ba

Fresh

W

COMMERCIAL HOTEL,

MACDONNELL STREET, GUELPH.

C. REINHART, PROPRIETOR.

This hotel has been Remodeled and Refurnished, and Offers the Best Accommodation to its Patrons of any house in the City.

RATES, \$1 PER DAY.

HOT AND COLD BATHS.

ELECTRIC BELLS.

HEATED BY STEAM.

A HOME LIKE PLACE FOR PROFESSIONALS.

PROGRAMME.

SECOND DAY—EVENING.

- 33—Procession from Market Square to Exhibition Park.
- 34—Baritone or Euphonium Solo Competition, for an "Excelsior" Baritone, given by T. Claxton, Toronto.
- 35—Band Concert by 1st and 2nd Prize 2nd Class Bands and Guelph City Band.
- 36—Gymnastic Exhibition by Barnett and Simcoe.
- 37—Concluding with a Grand Fireworks Display, under the supervision of Prof. Hand & Co., of Hamilton, as follows:
 1. Royal Salute of twenty-one Maroons.
 2. Balloon Ascent, with Signal Lights.
 3. Pig and Elephant Race.
 4. Flight of Rockets, with Silver Rains.
 5. Device—ITALIAN STREAMER ILLUMINATION.
 6. Illumination of the whole of the gardens with Bengal Lights.
 7. Grand Shell, with Gold Rain.
 8. Mine of Saucissons.
 9. Device—CASCADE SPIRAL.
 10. Balloon Ascent, discharging Fireworks.
 11. Illumination of Bengal Lights.
 12. Flight of French Asteroid Rockets.
 13. Device—TRIANGULAR DEVICE.
 14. Royal Shell, Red, White and Blue.
 15. Flight of Chinese Tourbillons.
 16. Rockets, various.
 17. Monster Balloon Ascent, with Fireworks and Motto.
 18. Flight of a Fiery Pigeon.
 19. Device—VICTORIA STAR.
 20. Descent of the Great Comet.
 21. Large Coho Shell.
 22. Nest of Serpents.
 23. Flight of Rockets.
 24. Flight of Tourbillons.
 25. Flight of Rockets.
 26. Grand Shell, representing Peacock Plumes in the air.
 27. Nest of Serpents.
 28. Device—SCROLL WHEEL.
 29. Flight of Tourbillons.
 30. Rockets, with Floating Stars.
 31. Shell, with Red and Amber Stars.
 32. Mine of Crackers.
 33. Shell, with Silver Stars.
 34. Flight of Rockets.
 35. Device—JEWELLED PYRAMID.
 36. Flight of Rockets.
 37. Shell, all colors.
 38. Mine of Snakes.
 39. Rockets, all colors.
 40. Device—PUNCH AND HIS WIFE AT A PICNIC.
 41. Illumination of the Trees.
 42. Rockets, with Mauve Stars.
 43. Grand Shell, with Mauve Stars.
 44. Historical Device—STORMING OF THE BASTILE, with realistic effects—hell-ing the Citadel—Springing a Mine—Artillery Duel—The infuriated mob gain possession of the principal gate, and, firing the magazine, cause the destruction of the famous stronghold.
 45. Finale—Flight of Rockets, or Aerial Bouquet.

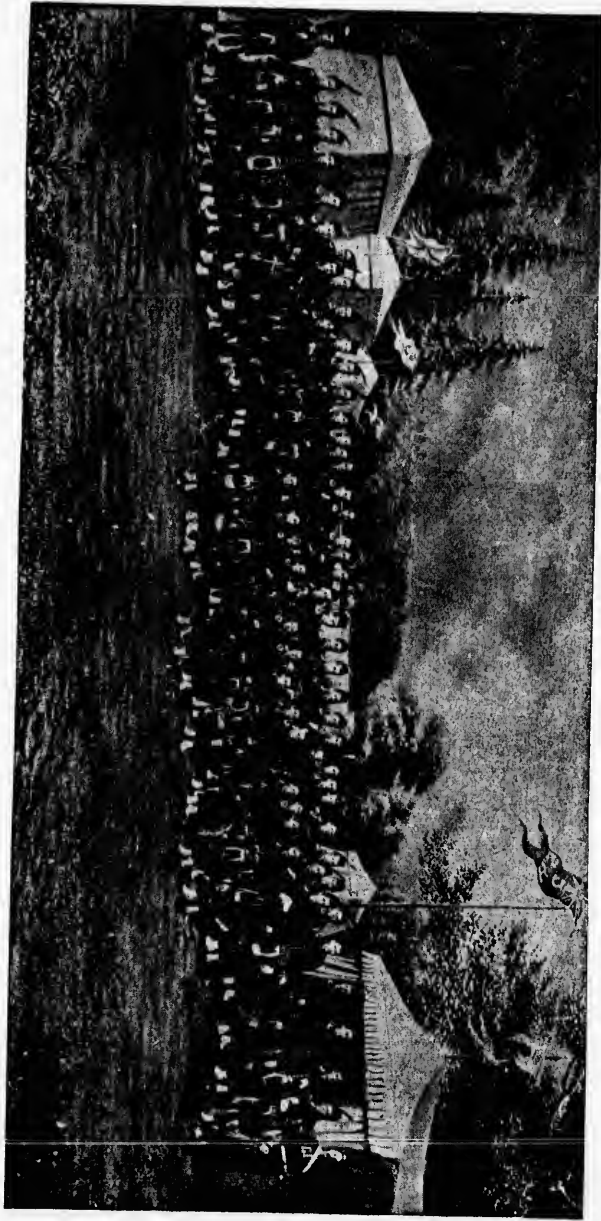
BUCKLE'S

Bakery and Restaurant,

MACDONNELL ST., GUELPH.

Fresh Bread, Biscuits, Cakes, etc., Delivered to any Part of the City Daily.

WM. BUCKLE, PROPRIETOR.



CAPT. CLARK'S FAMOUS HIGHLAND CADETS, GERMANIA.

HU

G

F

THE
in the
ways
at the
us a

•
J

Hall
F

Tin,

Gal

12 C

ESTABLISHED 1861.

Hugh Walker
and Son,

47 AND 49 WYNDHAM STREET.

GROCERS

AND

Fruit Merchants.

The oldest and most reliable house in the business. Our aim has always been to sell first-class goods at the lowest possible price. Give us a trial.

THE
MARVELLOUS
TEA
STORE,
NO. 1
DAYS BLOCK,

Is the spot for Choice Teas, Sugars, Coffees, Tobaccos, etc., at lowest cash prices.

CROCKERY AND GLASSWARE,
CHEAP, CHEAP, CHEAP.

PETER ANDERSON

• • **WM. B. KER** • •

HAS THE SOLE AGENCY IN GUELPH
FOR THE CELEBRATED

JEWEL STOVES,

* RANGES AND *

HOT AIR FURNACES.

Hall and Parlor Lamps, Best Coal Oil, Rodger's Cutlery, Nickel-Plated Ware, Granite-Iron Teapots and a Full Line of House Furnishing Goods, all of which will be sold at the Lowest Prices.

MANUFACTURER OF

Tin, • Copper, • Galvanized • Iron • and • Sheet • Iron • Wares.

Galvanized Iron Roofing, Eave Troughing and Cornices made to any Design. Jobbing Promptly Attended to. A Call Solicited.

WM. B. KER,

12 CORK ST.,

GUELPH.

DRY GOODS.

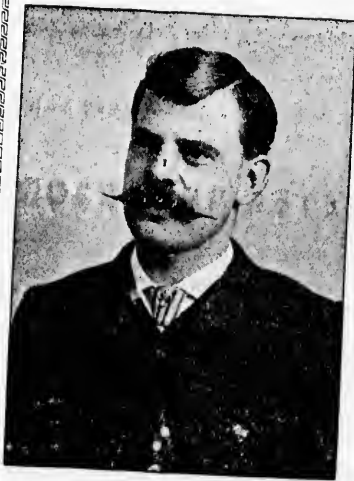
The Red Flag Bankrupt Stock Emporium,

CORBET'S BLOCK, GUELPH,

Noted as the Cheapest Dry Goods House in Guelph. Always Special drives in Hosiery, Gloves, Laces, Towels, Towellings, Table Linens, Cottons, Tickings, Shirtings, Etc.

N. B.—Be sure to get in the RED FLAG STORE as a similarity of stores makes a wonderful difference in prices.

D. E. MACDONALD.



Jas. Hough, Jr.,

The

Artistic Printer

Does the

Finest Printing in Canada.

Fine Color and Catalogue Work
Specialties.

READ THE OPINIONS OF THE HIGHEST PRINTING AUTHORITIES
IN THE WORLD.

"We consider Mr. Hough one of the best printers in the country."—*Inland Printer*,
Chicago, Ill.

"Mr. Hough's work stamps him as a leader in his profession."—*Printers' Circular*,
Philadelphia, Pa.

"Seldom, indeed, have we seen so many indications of typographical talent."—*Paper*
and Printing Trades Journal, London, Eng.

"Mr. Hough's work has no equal north of the border line."—*The Printers' Album*,
Chicago, Ill.

"It must be conceded that this printer shows himself an adept in his art."—
American Bookmaker, New York, N. Y.

"In general his work is very fine."—*Typographische Jahrbuch, Leipzig, Germany.*

"Mr. Hough's samples are in every respect works of art. He makes fine work a
specialty, and deserves every success."—*Tyfo, Napier, New Zealand.*

"Mr. Hough has made a name for good work in the Dominion. His samples are very
artistically printed, and shows he is deserving of it."—*British and Colonial Printer and*
Stationer, London, Eng.

GR

TI

H

R

- 1.—An er
- Reel
- 2.—An er
- 3.—All e
- Secre
- 4.—In all
- 5.—First
- takin
- 6.—Secon
- at nig
- 7.—For H
- shall
- be fin
- 8.—The C
- Judge
- 9.—Comp
- 10.—Corn
- 11.—Barit
- petiti
- 12.—Hose
- 13.—hose,
- cotton
- 14.—nectic
- struct
- reel a
- 13.—Hool
- mist
- when
- 14.—Straig
- carry
- 15.—For
- 16.—Judge
- 17.—All T
- groun
- 18.—The G

Stov

*

THE BEST PART OF THE PROGRAMME.

COME AND SEE THE

GREAT BARGAINS IN BOOTS AND SHOES,

A VERY LARGE ASSORTMENT TO CHOOSE FROM AND PRICES TO SUIT THE PURCHASER.

TINWARE, CROCKERY, GLASSWARE AND SMALL WARES,

O, MY! THE LOW PRICES WILL ASTONISH YOU.

A CART LOAD FOR ONE DOLLAR.

HENRY'S SALE ROOM,

OPPOSITE THE MARKET.

RULES AND REGULATIONS.

- 1.—An entrance fee of 5 per cent. of the first prize will be charged in the Band Competitions. Firemen's Hose Reel and Hook and Ladder races free.
- 2.—An entrance fee of twenty-five cents will be charged on all games and sports.
- 3.—All entries (except for sports and games, which can be made on the grounds) must be made with the Secretary, accompanied with the entrance fee, not later than Tuesday, June 11, 1889.
- 4.—In all contests where three prizes are given, four must enter or no third money.
- 5.—First Class Band Competition.—The Band winning first money must remain over next day, and Band taking second money must take part with first prize band at Concert at night.
- 6.—Second Class Band Competition.—The Bands taking first and second money must take part at the concert at night.
- 7.—For Band Competition.—Three Judges will be chosen who will be thoroughly competent. Their names shall not be known till after Competition. Judges will be under cover, and their decision shall in all cases be final.
- 8.—The Conductor of each Band must hand the Secretary a conductor's copy of the numbers to be played for Judge's use.
- 9.—Competing Bands shall play a Quick March, Selection or Overture, and Waltz.
- 10.—Concert Solo, with Band accompaniment, open to all. Same Judges as for Band competition.
- 11.—Baritone or Euphonium Solo, open to any player under 30 years of age. Same Judges as for Band competition.
- 12.—Hose Reel Race.—Open to all Firemen. Dry Run.—Run 200 yards to hydrant, attach and lay 350 feet of hose, take out third length and replace with last length and attach nozzle. The reel to carry 400 feet of cotton hose. Couplings to be examined before and after running, and when time is called (after all connections are made) all contestants must fall back and allow the judges to examine the same without obstruction or interference. The number of men running shall not exceed 12, and all must be on the rope or reel and start together, except the officer in command. No harness allowed to assist runners.
- 13.—Hook and Ladder Race.—Open to all; distance 300 yards. Not more than 15 men allowed to run, who must all be on the ropes or truck and start together; man to ascend 16 foot ladder. Time to be called when top rung is reached.
- 14.—Straightaway Hose Reel Race.—(Open to all bona fide Fire Companies)—Distance 400 yards; Reels to carry 150 feet of hose. No harness allowed to assist runners.
- 15.—For all games competitors must take part at call of judges.
- 16.—Judges decision in all cases to be final.
- 17.—All Bands and Companies must form in the different processions and march over the route to the grounds. Marches will not exceed thirty minutes.
- 18.—The Guelph City Band and Fire Brigade will not compete.

* D. E. RUDD, *

MANUFACTURER AND DEALER IN

Stoves, Tinware, Hot Air Furnaces,

HOUSE FURNISHINGS, DAIRY SUPPLIES, ETC.

* CONTRACTING A SPECIALTY. *

OPPOSITE THE CITY HALL.

VIEW OF G. T. R. BRIDGE, GREENH.



WHY

The
and the
ocean to
us to ge
we beim
importin
position
This is
has, and
reliable

Be
plain fig

The

THE CH
BOOKS
STAB
WA
W

S
BAB
A

LACROSSE,
FU

Don't be n

J. A

GOOD REASONS

WHY YOU SHOULD PURCHASE YOUR DRY GOODS
FROM

G. B. RYAN & CO.

The reasons why we have the Largest Assortment, the Newest Goods and the Best Value in Guelph, are as follows: We send a buyer across the ocean twice a year to the fountain head of trade for our goods, which enables us to get the very newest goods at about what it costs to produce them, and we being the only house in Guelph doing so, and we may say, the only one importing—as very little is imported except by ourselves. We are thus in a position to give you better goods and at a less price than our neighbors. This is one of the reasons why our trade has bounded ahead in the way it has, and also one of the reasons why the people will tell you if you want reliable goods at the proper price you must go to G. B. RYAN & CO.

Bear in mind we have but one price, and all our goods are marked in plain figures.

G. B. RYAN & CO.

The City Book Store,

59 ST. GEORGE'S SQ.

THE CHEAPEST PLACE IN GUELPH
FOR

BOOKS,

STATIONERY,

WALL PAPER,

WINDOW SHADES,

AND FANCY GOODS.

STEEL WHEEL BASKET

BABY CARRIAGES

AWAY DOWN IN PRICE.

LACROSSE, CROQUET and BASE BALL GOODS

FULL STOCK AND CHEAP.

Don't be misled. You get the Best Value
in Guelph from

J. A. NELLES.

Guelph

Business

College,

Guelph, - - Ontario.

FIFTH SCHOLASTIC YEAR.

ITS Graduates are now employed as book-keepers, business managers, stenographers, etc., by many of the largest business houses in Canada and the United States. Young men and women desiring a thorough training for success in any of these lines of work, or as reporters in the courts, will consult their own interest by attending the "Guelph Business College." For terms and particulars, address

M. MacCormick, Principal



PIANOS

The Evans,

The Decker,

The Behr.

DUPLEX DRUMS.

Whaley, Royce & Co.

MUSIC DEALERS,

283 Yonge St., - - - TORONTO.

Publishers of the "CANADIAN MUSICIAN," a live Journal,
devoted to the interests of Musicians in Canada.

Sheet Music, Music Books, BAND AND ORCHESTRA MUSIC, and Instruction Books for
Every Instrument.

BAND INSTRUMENTS.

Agents for BESSON & HIGHAM, and manufacturers of the "IMPERIAL" BAND
INSTRUMENTS. THE BEST IN THE WORLD. Endorsed by JULES LEVY
and used by Miss BESSIE GILBERT, two of the greatest living cornet
players, and used by MESSRS. CLARK AND BAUGH,
Canada's greatest Cornet players.

See the Imperial Cornet of our own Manufacture, and given by us for the best Cornet Soloist
on exhibition in the window of Messrs. F. B. Skinner & Co. on and
after the 15th June Valued at \$80.

BAND INSTRUMENT REPAIRING A SPECIALTY.

We carry everything found in a First-Class Music House, and Sell on the most Reasonable
Terms.

WHALEY, ROYCE & CO., - 283 YONGE ST., TORONTO.

SEND FOR CATALOGUE. THE MOST COMPLETE SENT OUT BY ANY HOUSE IN AMERICA.

Fas

Alw

Very
trains wi
further i
ment, or

The
Herod's
Secretary
upon app

Capt
Cadet Co
afternoon

ONT

The
tend a he

LO

COA

OR

R. E. NELSON,
Fashionable Clothier and Gents' Outfitter

Always in Stock, the Latest Styles in Goods at Closest Prices
for Cash.

SPECIALTY \$4.00 PANTS.

R. E. NELSON, 99 Upper Wyndham Street, Guelph.

RAILWAY RATES.

Very low Railway Fares have been secured over the G. T. R. and C. P. R. Special trains will be run, and extra inducements are offered Bands and Firemen in uniform. For further information apply to the Ticket Agents at railway stations, Secretary of Tournament, or see railway bills.

SECRETARY'S OFFICE.

The Secretary, Jas. Hough, Jr., will be at his office, Lower Wyndham Street, next to Herod's Drug Store, until the days of the Tournament, and will then be stationed at the Secretary's tent on the grounds. Any information, entry papers, etc., etc., can be obtained upon application.

SPECIAL.

Capt. Clark has kindly consented to give an exhibition by his celebrated Highland Cadet Corps and Amateur Athletic Association. The exhibitions will take place each afternoon.

ONTARIO AGRICULTURAL COLLEGE.

The College will be open for visitors during the Tournament, and the management extend a hearty invitation to farmers and others to visit the same.

WM. READ,

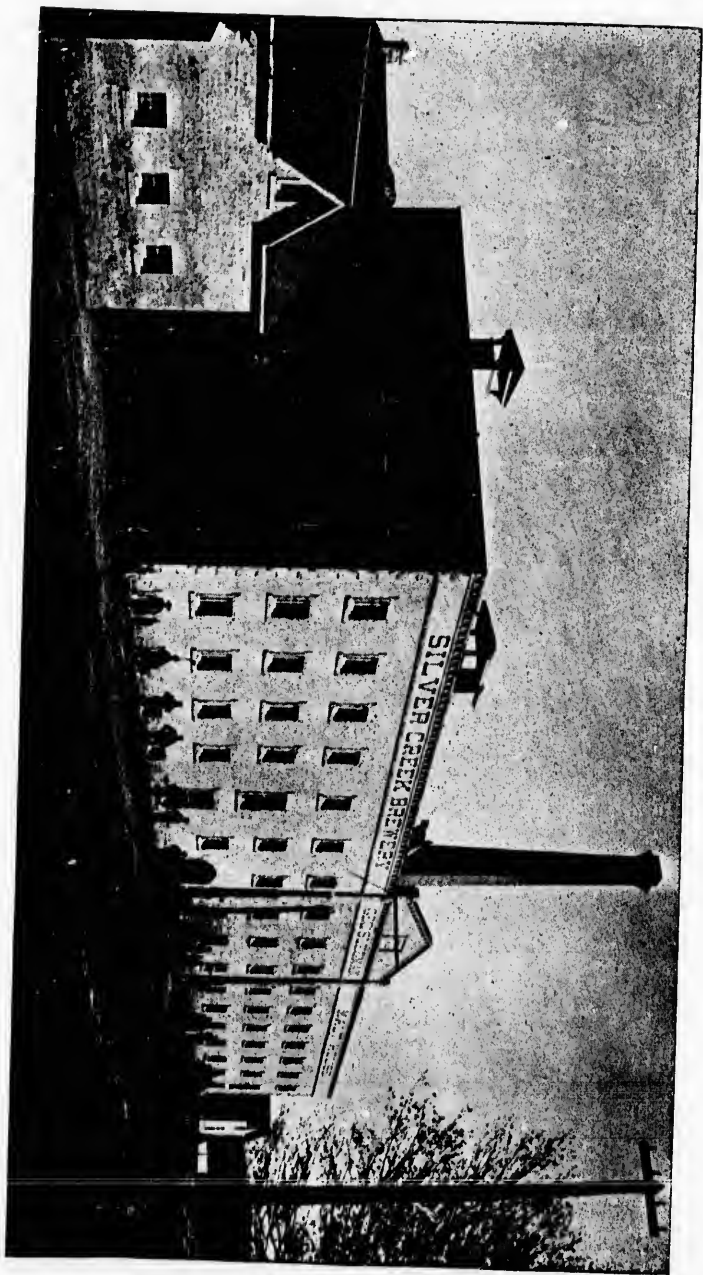
LORRY, TEAMSTER, EXPRESS.
PIANO MOVING A SPECIALTY.

COAL OIL WHOLESALE AND RETAIL.

AGENT FOR CLARK'S WOODEN PICKET WIRE FENCING.

OFFICE AND WAREROOMS, 95 MACDONNELL ST., GUELPH.

Look out for Show in Trades Procession.



From Photo. by Burgess & Son.

SLEEMAN'S SILVER CREEK BREWERY, GUELPH, ONT.

E

He

Or



GEO. F.

First-C
Turn

All Or

E. R. BOLLERT,



IMPORTER OF

Staple and Fancy Dry Goods,

27 LOWER WYNDHAM ST., GUELPH.

Dress Goods and Dress Making.

We are the acknowledged leaders in this Department for Fine Goods and Elegant making up.

Millinery and Mantles.

We have the Finest Show Rooms, Largest Stock and the most Comperent Assistants in the City.

Gents' Clothing and Furnishings.

We do an immense trade in 'all kinds of Gents' Wear. Ordered Clothing in Elegant Style.

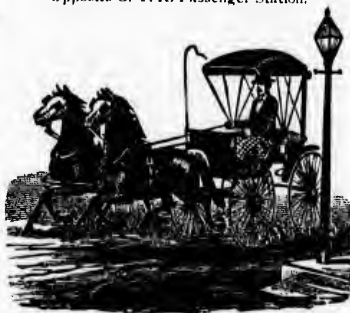
Carpets, House Furnishings, Etc.

ABSOLUTELY NO CREDIT.

Hewer's Livery,

MACDONNELL ST., E.

Opposite G. T. R. Passenger Station.



GEO. HEWER, - - Proprietor.

First-Class in every respect. Nobby Turnouts ready at a Moment's Notice.

ALL ORDERS BY MAIL PROMPTLY ATTENDED TO.

TELEPHONE 149.

C. E. GRABER.

The New Tobacco Store,

Next to Kelly's Music Store.

IS the place where you can always find in stock the Best Tobaccos, Cigars, Cigarettes, Pipes, Cigar and Cigarette Holders, etc. Fine Cut Chewing in Bulk

SMOKING MIXTURES

Made up to Suit Customers.

TRY GRABER'S OWN MIXTURE

Stonewall Jackson Cigars

Always in Stock.

C. E. GRABER,

TOVELL'S BLOCK.

GUELPH COAL DEPOT,

~~~~~  
**KLOEPFER & CO.,**

Wholesale and Retail Dealers in Coke,

AND THE BEST QUALITIES OF

~~~~~ SCRANTON, LEHIGH, SOFT AND BLOSSBURG ~~~~~

COAL.

Telephone No. 164.

Office—Quebec Street West.

W. WATSON,

MERCHANT TAILOR,

124 QUEBEC ST., GUELPH.



Seasonable Clothing

Canadian, English, Scotch, French
and American Suitings

—OF THE—
BEST QUALITY

AND MADE UP IN THE LATEST STYLES.

ALFRED BURT

BUTCHER,

NEAR ERAMOSA BRIDGE.



DEALER IN ALL KINDS OF

Fresh and Salt Meat

SAUSAGE, ETC.

OT,

Coke,

et West.

URT

RIDGE.

S OF

Meat

C.

*** THB ***

NOTED CHEAP SHOE HOUSE,

OPPOSITE CITY HALL. NEXT DOOR TO SAVINGS SOCIETY.

DAVID TRIPP.

THE oldest and most reliable Shoe Man in Guelph is offering Boots and Shoes at Prices never before heard of in Guelph. TRIPP means business, and if Good Reliable and Wearable Boots and Shoes and Low Prices will sell the goods he is bound to do it. No Ginger Bread Talk, but up and down square dealing is TRIPP's motto. Boys Give Him a Call, it will Pay You.

IF GOODS ARE NOT SATISFACTORY MONEY WILL BE REFUNDED.

D. TRIPP, - - Opposite City Hall.

PUBLIC BUILDINGS AND PLACES OF INTEREST.

- Ontario Agricultural College, on the Brock Road.
- Exhibition Park, on the London Road.
- Union Cemetery, on the Elora Road.
- General Hospital.
- St. Joseph's Hospital and House of Providence.
- Collegiate Institute, Paisley Street.
- Central School, Dublin Street.
- Guelph Business College, Wyndham Street.
- City Hall Buildings.
- Court House, Woolwich Street.
- Fire Hall, Market Square.
- Victoria Park, on River Speed.
- Church of Our Lady Immaculate, Norfolk Street.
- St. George's Church, Woolwich Street.
- St. Andrew's Church, corner Norfolk and Suffolk Streets.
- Dublin Street Methodist Church, corner Dublin and Suffolk Streets.
- Norfolk Street Methodist Church, corner Norfolk and Cork Streets.
- Congregational Church, corner of Norfolk and Liverpool Streets.
- Baptist Church, Woolwich Street.
- Puslinch Lake, in Puslinch Township, 9 miles south from City.

»»» SIMPSON'S «««

ROYAL CITY GROCERY,

OPPOSITE THE PAISLEY STREET METHODIST CHURCH.

Is the place for extra value in all kinds of Choice Family Groceries. We make a speciality of

TEA, COFFEE, AND BAKING POWDER.

We will give you more tea for \$1, and of better quality, than any other House in the City. A TRIAL ORDER SOLICITED.

H. SIMPSON, GROCER, GUELPH.



RESIDENCE OF F. B. SKINNER, ESQ., GUELPH, ONT.

D

NEW

CHINA

J.

P

LUN

DOOR
INC

RO

• THE •
Noted • Tea
• STORE, •

No. 2 Day's Block, Guelph.

We have on hand the finest stock of

NEW CROP TEAS, SUGARS,

and General Groceries in the City.

See our stock of

CHINA, GLASSWARE AND CROCKERY.

VERY CHEAP.

J. E. McELDERRY.

STEWART'S
Planing Mill.

Dressed and Undressed

LUMBER, SHINGLES,

Manufacturer of

DOORS, SASH, BLINDS, MOULD-
INGS, DOOR AND WINDOW
FRAMES, ETC.

ROBERT STEWART,

Wyndham St., Guelph, Ont.

FOR NOBBY AND STYLISH

ORDERED
CLOTHING

GO TO

King & Sullivan,

THE FASHIONABLE CITY TAILORS.

West Side. - - St. George's Square.

McCANDLESS,



WHOLESALE AND RETAIL DEALER IN

SGRANTON, LENIGN

AND ALL KINDS OF STEAM COAL.

ALL KINDS OF WOOD CUT AND SPLIT.

Slabs always on hand. Wood delivered to
any part of the city on shortest notice. Special
prices on car lots.

TELEPHONE NO. 35.

The · Golden · Lion,

GUELPH AND GLASGOW.

WE are the People that can Sell you DRY
..... GOODS Right.

| | | |
|---------------|-------------------------|-----------------|
| IF you Want a | CARPET | Go to the LION. |
| IF you want | CURTAINS | Go to the LION. |
| IF you want | A SILK DRESS | Go to the LION. |
| IF you want | A DRESS OF ANY MATERIAL | Go to the LION. |
| IF you want | A SUIT | Go to the LION. |
| IF you want | TIES OR COLLARS | Go to the LION. |
| IF you want | A HAT | Go to the LION. |
| IF you want | A BOY'S SUIT | Go to the LION. |

WE Show you the Largest Stock, the Best Assortment at
the Lowest Prices.

J. D. Williamson & Co.,

GUELPH'S GREAT DRY GOODS AND CLOTHING HOUSE.

