

**CIHM
Microfiche
Series
(Monographs)**

**ICMH
Collection de
microfiches
(monographies)**



Canadian Institute for Historical Microreproductions / Institut canadien de microreproductions historiques

© 1996

Technical and Bibliographic Notes / Notes technique et bibliographiques

The Institute has attempted to obtain the best original copy available for filming. Features of this copy which may be bibliographically unique, which may alter any of the images in the reproduction, or which may significantly change the usual method of filming are checked below.

- ☒ Coloured covers / Couverture de couleur
- ☐ Covers damaged / Couverture endommagée
- ☐ Covers restored and/or laminated / Couverture restaurée et/ou pelliculée
- ☐ Cover title missing / Le titre de couverture manque
- ☐ Coloured maps / Cartes géographiques en couleur
- ☒ Coloured ink (i.e. other than blue or black) / Encre de couleur (i.e. autre que bleue ou noire)
- ☒ Coloured plates and/or illustrations / Planches et/ou illustrations en couleur
- ☐ Bound with other material / Relié avec d'autres documents
- ☐ Only edition available / Seule édition disponible
- ☐ Tight binding may cause shadows or distortion along interior margin / Le reliure serrée peut causer de l'ombre ou de la distorsion le long de la marge intérieure.
- ☐ Blank leaves added during restorations may appear within the text. Whenever possible, these have been omitted from filming / Il se peut que certaines pages blanches ajoutées lors d'une restauration apparaissent dans le texte, mais, lorsque cela était possible, ces pages n'ont pas été filmées.
- ☐ Additional comments / Commentaires supplémentaires:

L'Institut a microfilmé le meilleur exemplaire qu'il lui a été possible de se procurer. Les détails de cet exemplaire qui sont peut-être uniques du point de vue bibliographique, qui peuvent modifier une image reproduite, ou qui peuvent exiger une modifications dans la méthode normale de filmage sont indiqués ci-dessous.

- ☐ Coloured pages / Pages de couleur
- ☐ Pages damaged / Pages endommagées
- ☐ Pages restored and/or laminated / Pages restaurées et/ou pelliculées
- ☒ Pages discoloured, stained or foxed / Pages décolorées, tachetées ou piquées
- ☐ Pages detached / Pages détachées
- ☒ Showthrough / Transparence
- ☐ Quality of print varies / Qualité inégale de l'impression
- ☐ Includes supplementary material / Comprend du matériel supplémentaire
- ☐ Pages wholly or partially obscured by errata slips, tissues, etc., have been refilmed to ensure the best possible image / Les pages totalement ou partiellement obscurcies par un feuillet d'errata, une pelure, etc., ont été filmées à nouveau de façon à obtenir la meilleure image possible.
- ☐ Opposing pages with varying colouration or discolourations are filmed twice to ensure the best possible image / Les pages s'opposant ayant des colorations variables ou des décolorations sont filmées deux fois afin d'obtenir le meilleur image possible.

This item is filmed at the reduction ratio checked below /
Ce document est filmé au taux de réduction indiqué ci-dessous.

10X	14X	18X	22X	26X	30X
<input type="checkbox"/>	<input type="checkbox"/>	<input type="checkbox"/>	<input checked="" type="checkbox"/>	<input type="checkbox"/>	<input type="checkbox"/>
12X	16X	20X	24X	28X	32X

The copy filmed here has been reproduced thanks to the generosity of:

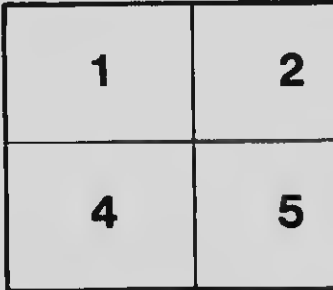
Harriet Irving Library
University of New Brunswick

The Images appearing here are the best quality possible considering the condition and legibility of the original copy and in keeping with the filming contract specifications.

Original copies in printed paper covers are filmed beginning with the front cover and ending on the last page with a printed or illustrated Impression, or the back cover when appropriate. All other original copies are filmed beginning on the first page with a printed or illustrated Impression, and ending on the last page with a printed or illustrated Impression.

The last recorded frame on each microfiche shall contain the symbol ➡ (meaning "CONTINUED"), or the symbol ▼ (meaning "END"), whichever applies.

Maps, plates, charts, etc., may be filmed at different reduction ratios. Those too large to be entirely included in one exposure are filmed beginning in the upper left hand corner, left to right and top to bottom, as many frames as required. The following diagrams illustrate the method:



L'exemplaire filmé fut reproduit grâce à la générosité de:

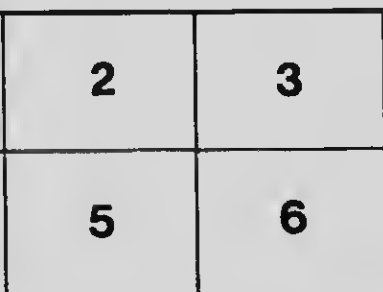
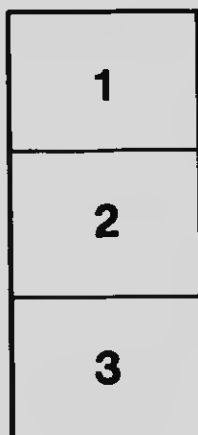
Harriet Irving Library
University of New Brunswick

Les images suivantes ont été reproduites avec le plus grand soin, compte tenu de la condition et de la netteté de l'exemplaire filmé, et en conformité avec les conditions du contrat de filmage.

Les exemplaires originaux dont la couverture en papier est imprimée sont filmés en commençant par le premier plat et en terminant soit par la dernière page qui comporte une empreinte d'impression ou d'illustration, soit par le second plat, selon le cas. Tous les autres exemplaires originaux sont filmés en commençant par la première page qui comporte une empreinte d'impression ou d'illustration et en terminant par la dernière page qui comporte une telle empreinte.

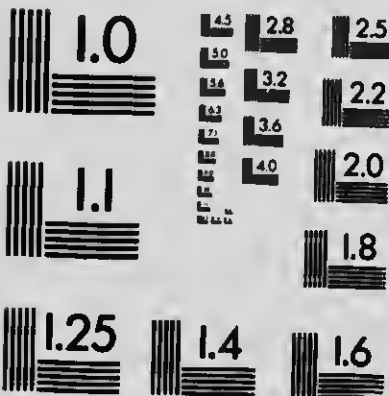
Un des symboles suivants apparaîtra sur la dernière image de chaque microfiche, selon le cas: le symbole \rightarrow signifie "A SUIVRE", le symbole ∇ signifie "FIN".

Les cartes, planches, tableaux, etc., peuvent être filmés à des taux de réduction différents. Lorsque le document est trop grand pour être reproduit en un seul cliché, il est filmé à partir de l'angle supérieur gauche, de gauche à droite, et de haut en bas, en prenant le nombre d'images nécessaire. Les diagrammes suivants illustrent la méthode.



MICROCOPY RESOLUTION TEST CHART

(ANSI and ISO TEST CHART No. 2)



APPLIED IMAGE Inc

1653 East Main Street
Rochester, New York 14609 USA
(716) 482 - 0300 - Phone
(716) 288 - 5989 - Fax

Recd
P.
2000
1

A



Fig. 1

B



The only Hotel in the City with Private Lawn and Garden
Foster, Bond & Co., Proprietors *John H. Bond, Manager*
ST. JOHN NEW BRUNSWICK



PANORAMIC VIEW OF T



W OF THE CITY OF SAINT JOHN, N. B.

Nov. 1900.
50
2.00
1.00
1.00





The Royal Hotel

ST. JOHN, N. B.

FIRST CLASS IN EVERY RESPECT

Raymond & Doherty, Proprietors



HOTEL DUFFERIN

KING SQUARE

The only Hotel in the City with Private Lawn and Garden

Foster, Bond & Co., Proprietors

John H. Bond, Manager

ST. JOHN: NEW BRUNSWICK



BAY SHORE, ST. JOHN, N. B., SHOWING PARTRIDGE ISLAND.

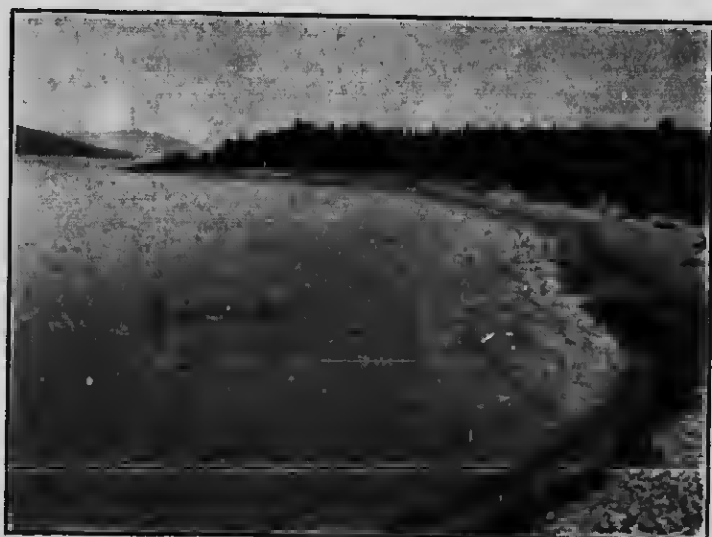
NEW BRUNSWICK

CANADA



THE Canadian Province of New Brunswick, because of the attractiveness of its scenery, the abundance of its fish and game, the unrivalled facilities for boating, canoeing and camping, the cheapness of these attractions and their accessibility, must continue to grow more and more popular with those looking for any or all of these important elements to an enjoyable and successful vacation. The climate is bracing and equable. Most interesting historical associations cluster about the early days when French and English struggled for supremacy and the trade of the red man. Good board can be secured in lovely and picturesque centres and at beautiful sea shore resorts, at prices cheaper than anywhere else on the continent. That these advantages are yearly becoming appreciated, the steadily growing summer travel to the province indicates.

All sportsmen know that New Brunswick is the land of big game and that more and bigger moose



KENNEBECASIS, ROTHESAY, N. B.



RECORD MOOSE SHOT IN NEW BRUNSWICK BY DR. W. L. MUNRO, OF PROVIDENCE. R. I. ANTLEERS SPREAD $68\frac{1}{4}$ INCHES.

are yearly killed in its forests than in any other section either of Canada or the United States, and that there are deer, caribou, bear and smaller game, as well as wildfowl, such as geese, ducks, partridges, woodcock and snipe to be had in abundance. The Restigouche is the most famous salmon river in the world, and its greatest rivals are other New Brunswick rivers. The forests, rivers, lakes and streams of the province lure the hunter, fisherman and canoeist with promise of the finest sport whether with gun or rod.

If your desire is to camp, canoe, fish or hunt, the New Brunswick Tourist Association will put you in communication with guides who are reliable and trustworthy. Write the Secretary stating your wishes.



A NEW BRUNSWICK TROUT



MIRAMICHI SALMON TAKEN WITH ROD AND FLY.

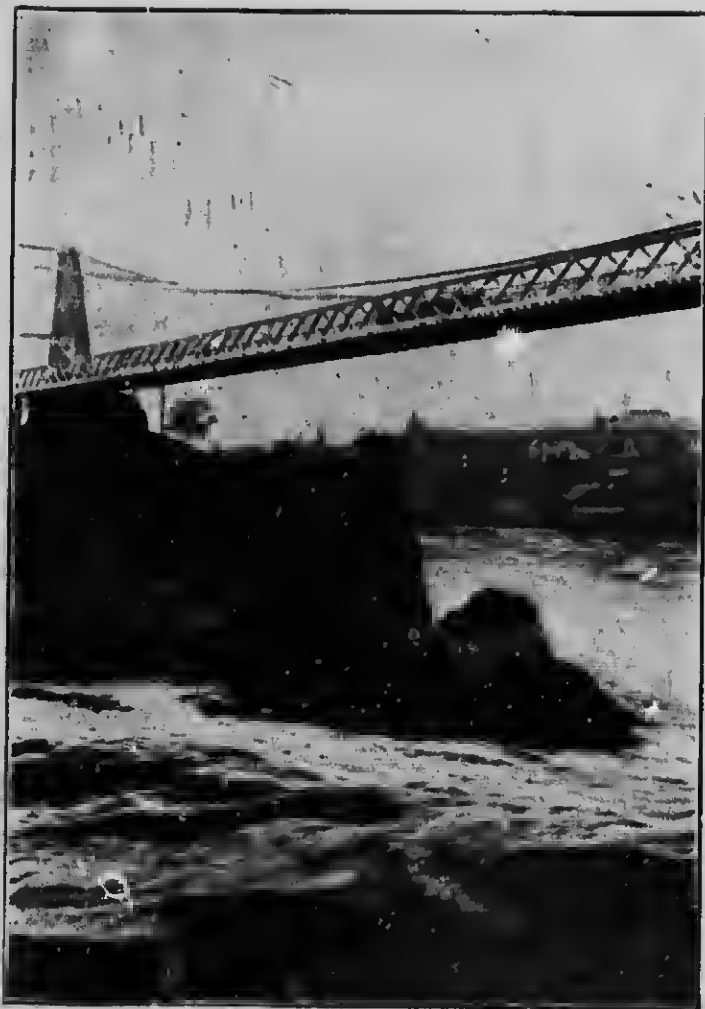
French Acadians, descendants of those hardy and intrepid pioneers who first settled this region, inhabit a large section of the province, speaking their native tongue and maintaining in a measure the manners and traditions of their ancestors.

Historic Interest

The summer tourist will find a visit among their beautiful and picturesque settlements along the upper St. John or on the North Shore one of the pleasures of a lifetime and will carry away most pleasant memories and a keen appreciation of the important part the Acadians are playing in the agricultural and



MONUMENT TO SAMUEL DE CHAMPLAIN, DISCOVERER OF THE
SAINT JOHN, ON QUEEN SQUARE, ST. JOHN



SUSPENSION BRIDGE AT ST. JOHN OVER REVERSING FALLS
DARK LINE ON ROCKS SHOWS HEIGHT TO WHICH
TIDE RISES WHEN FALL REVERSES

industrial life of Canada. Aside altogether from the people, a visit to either of the sections mentioned is well worth while because of the beauty of the scenery. The Grand Falls on the St. John river are second only to Niagara on the American continent, while the gorge, though not comparable in size with that of Niagara, is far wilder and more picturesque. Along the North Shore is seacoast scenery unrivalled on this continent.

From Boston, New Brunswick may be reached in a few hours by the All-rail Line, Boston & Maine



GRAND FALLS, ST. JOHN RIVER

Maine Central and Canadian Pacific Railways, or by the palatial steamers of the Eastern Steamship Company, and from Montrea' by either

How to Get There

the Canadian Pacific or Intercolonial Railways. If the tourist should be in Nova Scotia, it is but a two hours

voyage in a fine steamer of the Dominion Atlantic Railway across the Bay of Fundy from the Land of Evangeline, or an all-rail ride on the Intercolonial.

St. John, the chief commercial city of New Brunswick, has many attractions. The tides in the harbor, which have a variation of twenty to twenty-seven feet, produce a phenomenon on the water front

City of St. John

that astonishes and surprises the visitor, who is also interested in the craft of all nations loading cargo at the wharves. The remarkable

Reversing Falls have no counterpart in the world. With each turn of the tide the cataract turns. Sometimes there is a fall up-river, sometimes a fall down stream, and at other times a placid surface over which a canoe or racing shell can be sailed with safety. This City was founded by the United Empire Loyalists, who, refusing to join in the American Declaration of Independence, abandoned their homes and moved to Canada. Among their cherished possessions was the Coat of Arms formerly over the State House in New York. This to-day occupies a place of prominence



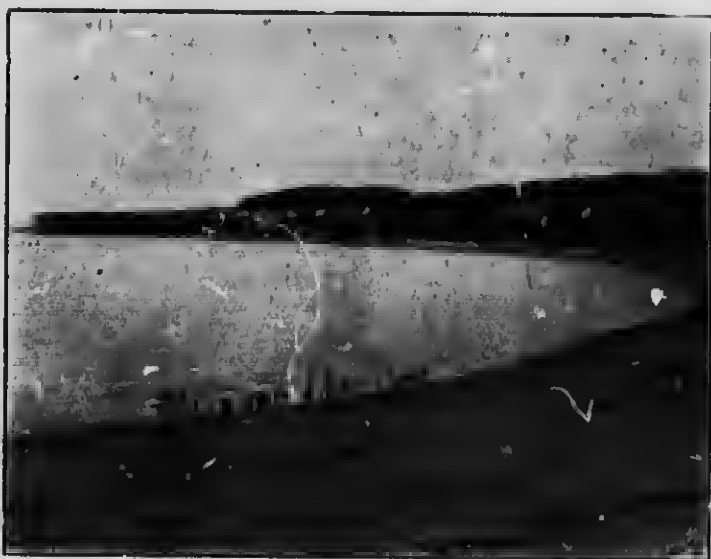
BOAR'S HEAD, ST. JOHN RIVER



BRIDGES OVER REVERSING FALLS, ST. JOHN.

in Trinity church, and is an object of interest to many visitors to the city. Even greater historical interest attaches to the defense of her husband's fortress by Madame La Tour, the wife of a French trader and adventurer. Her story, so graphically told in Whittier's beautiful poem, "St. John," is one of the noblest as well as one of the saddest in the pages of the early history of the country, but almost every section has its local history and traditions.

With a summer temperature that never exceeds eighty degrees, excellent hotel accommodation, beauti-



BROWN'S BEACH AT ST. MARTINS, N. B.

ful streets, buildings and parks, St. John is a natural centre from which tourists branch out in all directions over the Maritime Provinces. Ten miles from St. John in one direction is beautiful Loch Lomond; nine miles in another, the charming village of Rothesay; and twelve miles in another is lovely Westfield on the St. John River; while closer at hand is the Bay Shore and Duck Cove, reached by the street cars, with a glorious outlook over the Bay, and fine opportunities for surf bathing. St. John in the winter season is one of the busiest ports on the Atlantic seaboard, for then great ocean steamers that in summer ply to Quebec and Montreal on the St. Lawrence come to this ice-free harbor to discharge and secure cargoes.

THE KENNEBECASIS AT LAKE SIDE, NEAR ST. JOHN





VIEW NEAR EVENDALE ON THE ST. JOHN RIVER

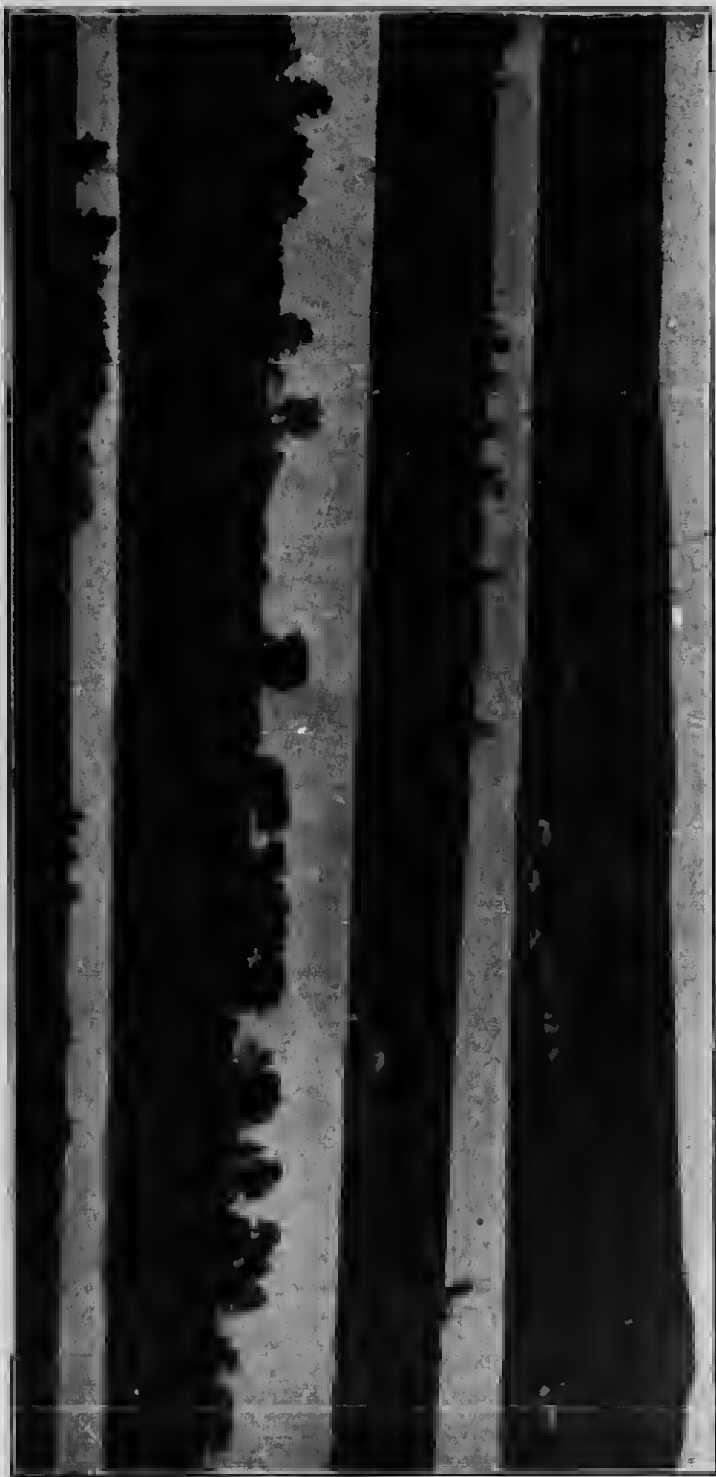
BRANDY POINT, ST. JOHN RIVER, N. B.





NARROWS, ST. JOHN RIVER, N. B.

ISLANDS FROM HAMPTHEAD ON THE ST. JOHN RIVER, N. B.



Rev. T. deWitt Talmage once described the St. John river as "the Rhine and the Hudson commingled in one scene of beauty and grandeur." Many other writers have dwelt on the beauties of this noble and magnificent river. All summer tourists to New Brunswick should make the voyage on the St. John



PASSENGER STEAMER ON ST. JOHN RIVER

River between St. John and Fredericton, and if time will permit should take side trips on the tributary rivers and lakes, also traversed by steamers.



FOSSIL ROCK, DALHOUSIE, N. B.

VIEW OF FREDERICTON, N. B.





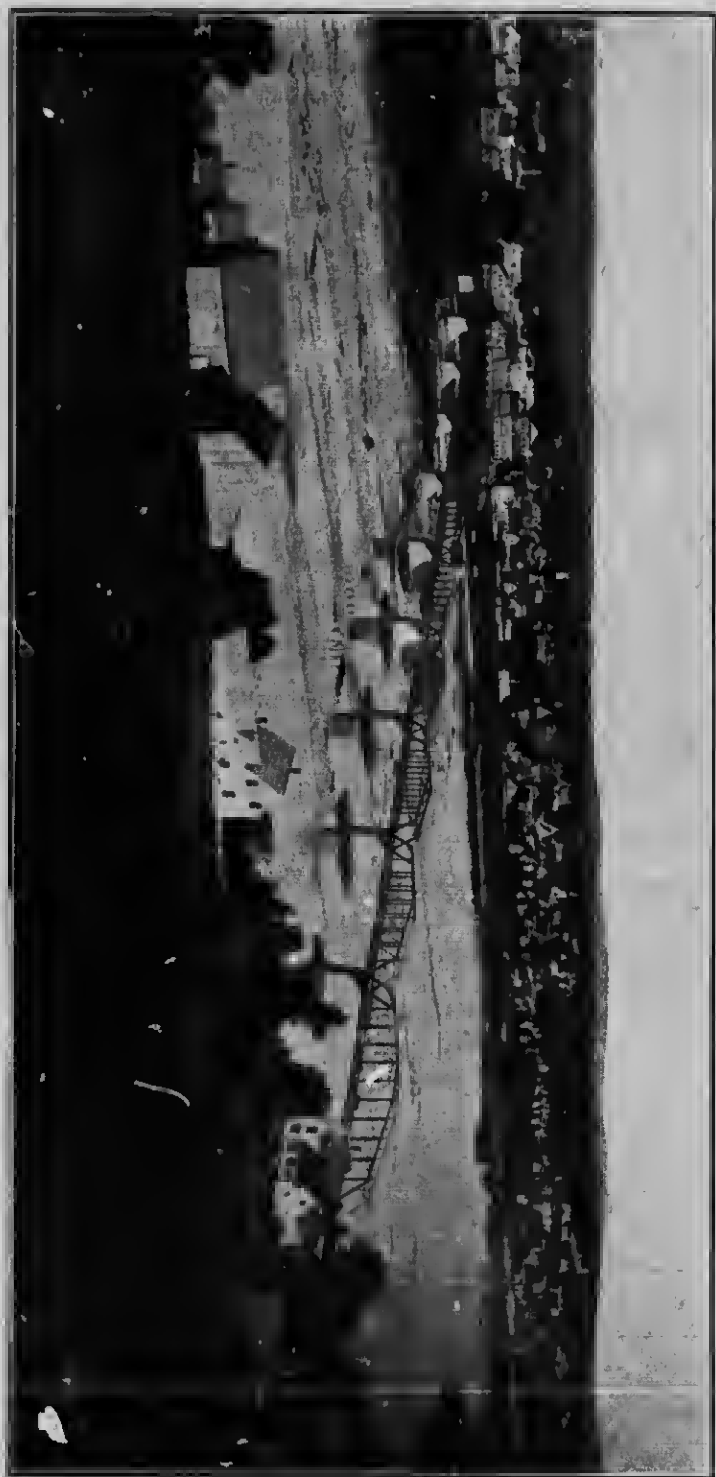
VIEW ON GREEN RIVER, MADAWASKA COUNTY NEW BRUNSWICK.

Fredericton, the capital of New Brunswick, reached either by steam or rail, is a very beautiful city. It contains the Parliament buildings, University and Provincial Normal School and the Church

Fredericton of England Cathedral, one of the
The purest specimens of Gothic architecture
Capital ure on the Continent. The streets
 are level and shaded with beautiful
 trees. Old Government House is a quaint structure



DAM FALLS, N. W. MIRAMICHI, N. B.



WOODSTOCK, N. B.

of historic interest. Across the river are the towns of Gibson and St. Marys, and three miles up the Nashwan's stream from Gibson is Marysville. Fredericton is a great canoeing, fishing and shooting centre.



CHARLO FALLS, N. B.

Above Fredericton, on the St. John River, are Woodstock, Grand Falls and Edmundston, and a game country that is famous the world over.

The North Shore of New Brunswick comprises the counties of Northumberland, Gloucester and Restigouche, famous as resorts for sportsmen. The Mira-

michi, Nepisiguit and Restigouche are world-famed salmon rivers, while the deep woods are the haunts of

The North Shore

big game, and the seaward shores the homes of wild fowl. The Miramichi, with its pretty towns of Chatham and Newcastle, and villages along the shore, is a truly noble river. Bathurst, at the



ESKIDILLOO, NEAR CHIPMAN

mouth of the Nepisiguit, and Dalhousie and Campbellton on the Restigouche, are most attractive resorts. The Intercolonial Railway, owned and operated by the Canadian Government, traverses this portion of the Province, which tourists will find is one of the



A DAY'S DUCK SHOOTING ON THE KENNEBECASIS



A SCENE ON THE WAY TO N. W. MIRAMICHI, N. B.

ROUGH WATERS ON THE RESTIGOUCHE.





ON THE RESTIGOUCHE, N. B.



VIEW OF CAMPBELLTON, SUGAR LOAF MOUNTAIN.

most delightful in the whole country, the seashore resorts being particularly attractive to the summer visitor seeking beautiful beaches and cool breezes.

On the Bay of Fundy, are many places which also have special charms for the tourist. Chief of these is

Bay of Fundy

St. Andrews, with its famous Algonquin Hotel, the finest summer resort in Canada, managed by the Canadian Pacific Railway Company, a guarantee that it is of the best, and Chamcook Lake, with its gamey land-locked salmon. The beautiful island of



A MIRAMICHI BEAR.

Campobello with the Campobello Inn, is another popular and well conducted resort. The island of Grand Manan also is worthy of a visit and those who desire salt breezes will find these places unrivalled both in the beauty of the scenery and the attractiveness of the surroundings. Other towns along the coast are St. Stephen, on the International border, St. George, the centre of probably the finest fishing region in the Province, excepting only the North Shore; St. Martins, where there is one of the most magnificent



ST. ANDREW'S, N. B.



ST. STEPHEN, N. B., ON THE INTERNATIONAL BORDER



THE OLD GREY FLAR, CAMPOBELLO ISLAND, N. B.

beaches along the whole Atlantic coast and excellent accommodations for summer tourists at moderate rates. Still further up the bay are Hillsboro, Hopewell, Albert and Alma. The wonderful rocks at Hopewell Cape, sculptured into many curious shapes by wave and tide, are a source of interest and wonderment to all who see them.



INLAND BORE, MONCTON, N. B.

Other most attractive points for the visitor to New Brunswick are Sussex, where the local militia camps each summer; Moncton, the railroad centre and terminal of the Grand Trunk Pacific Railway now being built across the Continent. Here the famous



CAPE BRULE BEACH, SHEDIAK, N. B.

CAMP GROUNDS, MILITARY K. 10, SUSSEX, N. B. 10



tidal bore of the Petitcodiac River may be seen; Sackville, a pretty university town, on the border of the great Tantramar marshes; Richibucto, Buctouche and other Kent County centres where there are magnificent beaches and beautiful scenery. Shediac, and Point du Chene, the point of departure to Prince Edward Island, are also resorts yearly drawing more visitors



ASHBURTON HEAD, GRAND MANAN, N. B.



SURF AT ST MARTINS BEACH, N. B.



ON THE ST. JOHN RIVER NEAR HAWKSHAW, N. B.



LANOING 3 LB. SALMON ON PORTAGE RIVER, KENT CO., N. B.

New Brunswick Tourist Association

HONORARY EXECUTIVE.

His Honor THE LIEUTENANT GOVERNOR.

All EXECUTIVE MEMBERS of the Provincial Government.

His Worship THE MAYOR.

THE PRESIDENT OF THE BOARD OF TRADE.

W. B. HOWARD, Dist. Pass. Agt., C. P. R.

J. M. LYONS, Gen. Pass. Agt., I. C. R.

A. C. CURRIE, D. A. R.

DR. G. U. HAY, W. S. FISHER

R. S. ORCHARO, S.S. Champlain.

L. R. THOMPSON, Trav. Freight and Pass. Agt., E. S. S. Co.

W. G. LEE, Agt. E. S. S. Co.

EXECUTIVE COMMITTEE:

FRANK B. ELLIS,	President.
T. Q. DOWLING,	1st Vice-President.
J. H. BONO,	2nd Vice-President.
A. C. CURRIE,	Treasurer.
F. A. DYKEMAN,	Auditor.
ANNIE E. TINGEY,	Secretary.

W. F. HATHEWAY, M.P.P.	T. H. BULLOCK
A. O. SKINNER.	D. R. JACK.
E. A. SMITH.	R. T. HAYES.
W. E. RAYMONO,	J. M. ROCHE.
W. E. FOSTER.	

Tourists' Information Bureau, Board of Trade Rooms
No. 85 Prince William Street

Tourist literature, railway and steamboat folders and time tables can be had on application to the secretary.

Complete lists of hotels and boarding houses, both in the city and throughout the province, as well as hunting and fishing resorts, with rates and other information, are kept on file.

The Clifton

139 - 143 GERMAIN STREET
ST. JOHN, NEW BRUNSWICK

Newly furnished and re-opened under new and capable management. Peerless cuisine. From "*The Cupola*" a commanding view of the harbor, city and surroundings may be obtained.

RATES: \$2.00 TO \$3.00 PER DAY

H. E. GREEN, MANAGER



THE BELLE VIEW

Rothsay, Kings Co., N. B. Beautifully situated on the Kennebecasis River, nine miles from St. John over the Intercolonial Railway. A charming summer resort for those seeking rest and health. Fine boating and bathing; beautiful drives and shady walks. Rates \$2.00 per day, \$12.00 per week. For further particulars address as above.



ALGONQUIN HOTEL

ST. ANDREWS-BY-THE-SEA. Reached by the Canadian Pacific Railway. An incomparable retreat; a perfect health resort. Renowned for beautiful scenery. Beautiful sea-bathing in tepid waters for children as well as adults. Rates, \$3.50 per day and upward, with special inducements for those making prolonged stays.

THE INN—One of the most charming and the most unique resorts to be found anywhere. It is situated close to the ocean side. Rates, \$2.50 a day and upward.



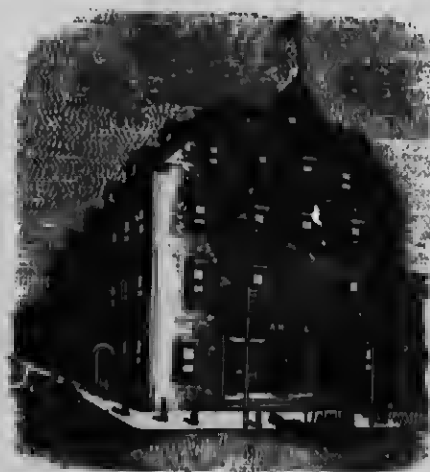
THE CAMPOBELLO INN, CAMPOBELLO, N. B.

The Inn offers exceptional attractions to summer tourists. The house was designed solely with a view to the comfort of its guests, the cuisine is unexcelled, and among other features are a large ball room, billiard room, bowling alley, tennis courts and a good livery. Passamaquoddy Bay and adjacent waters offer unsurpassed opportunities for sailing, boating, canoeing and fishing, and boats and canoes are to be had at reasonable rates. Campobello Island comprises ten thousand acres, the larger part of which is given up to a Forest Preserve traversed by roads, trails and bridge paths. A steam ferry makes hourly trips to Eastport, Maine, one mile distant, connecting there with the Washington County branch of the Maine Central Railroad and the fine modern turbine steamships of the Eastern Steamship Co. from St. John, Portland and Boston. Rates, \$3. and up per day, \$17.50 and up per week. The Campobello Corporation, Limited, Campobello, N. B. New York Office, East 59th St.



THE TOURAINE

New modern hotel, with latest improvements; long distance telephone in every room; lighted throughout with electricity; private baths and beautifully furnished rooms; service and chef best money can procure Hotel Touraine, Limited, Chatham, N. B., A. B. MacKinnon, Secretary.



THE CARLISLE, WOODSTOCK

Woodstock, on the St. John River, is the very centre of the game and fishing resorts of the Province, and an ideal spot for the tourist, with its beautiful scenery, magnificent drives, and opportunities for recreation and rest. "The Carlisle" is a modern, up-to-date hotel, centrally located, and 1st class in every respect. The best natural golf links in the Maritime Provinces open to guests of the hotel. Rooms with bath if required. Rates, \$2.50 to \$3.00. C. J. Tabor, Proprietor.



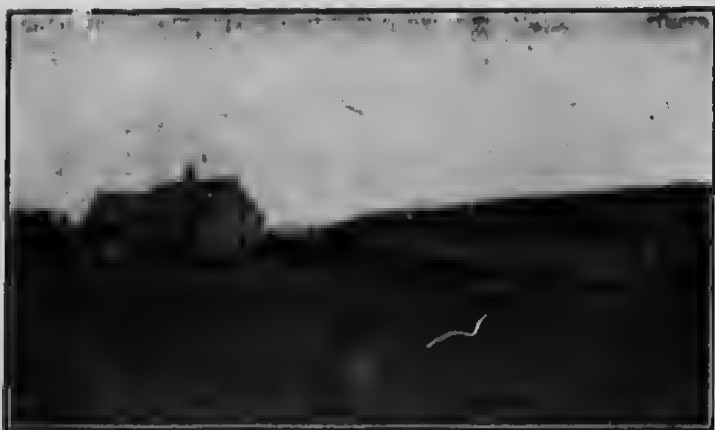
WELDON HOUSE, SHEDIAC, N. B.

Situated on the Northumberland Strait. Reached by Intercolonial and Canadian Pacific Railway, and by steamer from Prince Edward Island daily. One of the best summer resorts in the Maritime Provinces. Nice shaded grounds, tennis lawns, etc. Sea bathing and good boating. Nice airy rooms. Trout, bass and mackerel fishing in season. Also during the open game season, moose, deer, partridge, duck and woodcock. Rates per day, \$1.50 to \$2.00. Special rates by the week. Jas. D. Weldon, Proprietor.



THE ST. MARTINS HOTEL

This commodious hotel is situated within five minutes walk from the R. R. station and the beach. The rooms are airy and the service excellent, rates are \$1.50 per day, with special rates by the week. Free carriage meets all trains. A fine livery is connected with the hotel and single or double teams can be engaged by the hour or day at a low price. For terms and particulars, address James Schoales, Prop., St. Martins, N. B.



WHALE COVE FARM HOUSE

An ideal spot for the tourist, with fine opportunities for bathing, driving fishing. A comfortable farm house with the best of table board and pleasant rooms. Grand Manan is reached by direct steamer "Aurora" weekly from St. John, or by Eastern Steamship Line to Eastport, and thence across by "Aurora." House is situated $\frac{1}{4}$ of a mile from steamer landing. Terms per week, \$5.00 and \$6.00 with reasonable rates for children. For further information, write to Mrs. Stephen Thomas, Whale Cove Farm House, North Head, Grand Manan, N. B.



BONNY RIVER HOUSE

A new, comfortable and well-equipped hotel, 100 yards from the New Brunswick Southern Railway Station at Bonny River. Good livery in connection easy and convenient fishing and hunting lodges at McDougall, Digdeguash and Red Rock Lakes, from two to twelve miles from hotel, at each of which a thoroughly competent man cook is kept during the season. Good boats and canoes at all lakes. Trout fishing in the Magaguadavic Valley region is unexcelled. During the open game season, moose, deer, bear, partridge and woodcock are abundant. Careful and experienced guides furnished. Full outfits for canoeing and tenting trips on Magaguadavic River and connecting streams. Rates at hotel or one of the lodges, \$2.00 per day. For services of guide, with boat or canoe, board included, \$2.50 to \$3.00 per day. Cor. solicited.





If you want to save travelling time, and spend more of your vacation in the woods, let me tell you of my facilities. Your postal card will bring particulars. I have a chain of camps in the heart of New Brunswick's best game country, and am lessee of Cain's River, the best trout stream in the Province. I have big game hunters and fishermen guides always, ready with complete outfits, excepting rifles, and my rates are no higher than others without my equipment. Literature will be gladly mailed you, and references given to prominent hunters in the United States. W. H. Allen, Penniac, N. B., Canada.



THREE ISLAND CAMPS MAGAGUADAVIC LAKES

Three island camps on Magaguadavic Lakes; the most beautiful stretch of fresh water in New Brunswick; camps are built of peeled logs, clean and roomy; meals served in dining camps; good trout fishing, canoe trips, and hunting, the latter including duck, snipe, partridge, and all small game, as well as moose, deer and bear; parties are conveyed to and from camps by motor boat; charges reasonable; write for particulars to Adam Moore & Son, Scott's Mills, York Co., N. B.

HOTEL LIST

Place	Hotel	Proprietors	Rate per day
St. John	Royal	Raymond & Doherty	\$3.00 to \$5.00
"	Dufferin	Poster, Bond & Co.	2.50 to 5.00
"	Victoria	Victoria Hotel Co., Ltd	2.50 to 3.00
"	The Clifton	H. B. Green	2.00 to 3.00
"	Park	E. Howes	2.00 to 2.50
"	Carvill Hall	John P. Morrison	1.50 to 2.00
"	Lansdowne House	W. H. Bustin	1.50 to 2.00
St. John, North	St. John Hotel	Mrs. H. L. Ingersol	1.50 to 2.00
Andover	Ferris Hotel	Wm. H. Ferris	1.50 to 2.00
Bathurst	Perley's	J. Allen Perley	1.50 to 2.00
"	Robertson's	Geo. Robertson	2.00
"	Wilbur House	Percy Wilbur	1.50 up
"	White House	J. White	1.50 up
Bartibogue	Bartibogue Hotel	Albert Connell	1.50 to 2.00
Bonny River	Bonny River House	T. A. Sullivan	2.00 up
Campbellton	Minto	T. G. Gorman	2.00 up
"	Waverly	Mrs. S. S. Jardine	1.50
Campobello	The Campobello Inn	H. M. Merriman, Treas	3.00 up
Caraquet	Blanchard	P. P. Albert	1.50 up
"	Poley House	W. P. Foley	1.50
Cambridge	Marquand House	Wilmot Wilson	1.50
Chatham	Adams House	John White	1.50 to 2.00
"	Bowser House	R. Planagan	1.50 to 2.00
"	Hotel Touraine	A. B. MacKinnon, Sec.	2.00 up
Chilpan	Darrell House		
Dalhousie	Murphy's	Thomas Murphy	2.00
"	Inch Arran	John E. Dean	2.00
"	Royal	W. J. Baker	1.50 to 2.00
Dorchester	Windsor	W. Frank Tait	2.00 up
Edmundston	Hebert's	Pelix Hebert	1.50
"	Royal	E. Gagnon	2.00
Evandale	Vanwart's	J. O. Vanwart	1.50
Fredericton	Queen	J. J. McCaffrey	2.00 to 3.00
"	Barker House	T. V. Monahan	2.00 to 3.00
"	Windsor Hall	Albert Everett	2.00 to 2.50
"	Long's	P. D. McKensie	1.50 to 2.00
"	York	Bridges & McEwan	1.00 to 1.50
Gagetown	Simpson's	Misses Simpson	1.00
"	Ruhius	Mrs. J. Ruhins	1.50
Gagetown Upper	Columbia	Henry Coy	1.00
Grand Falls	Curless House	Charles Curless	2.00
Grand Manan	Marathon	Jas. Pettes	1.50
"	Whale Cove Farm House	Mrs. Stephen Thomas	1.00
Hampstead	Vanwart's	Isaac Vanwart	1.50 to 2.00
"	River View	John McAfee	1.50
Hampton	River View	George Freeze	1.50
"	Heath Hall	Mrs. N. M. Barnes	1.00
Harvey Station	Rohison's	Thos. Rohison	1.50
Hillsboro	Empire	Mrs. M. A. Poster	1.50
Kingston	Mapleridge Lodge	Miss Northrup	1.50
Long Reach	The Cedars	W. B. Ganong	2.00 to 2.50
Loch Lomond	Ben Lomond	Mrs. S. H. Barker	1.50
Loch Lomond (Upper)	Loch Lomond Hotel	Mrs. E. B. Johnston	1.00
McAdam	C. P. R. Station Hotel	C. P. R. Co.	2.50 up
Moncton	Brunswick	Geo. McSweeney	2.00 to 2.50
"	Minto	P. Gallagher	2.00
"	American	Wm. Wilson	2.00 to 2.50
Newcastle	Miramich		2.00 to 2.50
Norton	Campbell's		1.50 up
Oromocto	Riverside	Mrs. J. B. Stocker	1.50 to 2.00
Rexton	Royal	James Conway	1.50
Richibucto	Kent	Geo. Irvine	1.50
Rothsay	Belle View	D. A. Pugaley	2.00
"	Kennedy's	Mrs. Jos. Kennedy	1.50
"	Hillshurst	T. B. Roberts	1.25
Riverside	Shepody	S. Robinson	1.50
Sackville	Brunswick	A. Lesperance	1.50 to 2.00
"	Ford's	Alex. Ford	2.00 up
St. Andrews	Algonquin	C. P. R. Co.	3.00 up
"	The Inn		2.50 up
"	Kennedy's	A. Kennedy & Son	2.00 up
St. George	Carleton	G. H. McGee	1.25
St. Martins	St. Martins	J. Schoales	1.50
"	Wishart House	Mrs. James Wishart	1.50
St. Stephen	Windsor	W. P. Nicholson	2.00
"	Queen	Mrs. J. Smith	2.00
Shediac Cape	Idlewyld		
Shediac	Weldon House	J. D. Weldon	1.50 to 2.00
Woodstock	The Carle	C. J. Tabor	2.50 to 3.00

Health

in
the

Air



Gulf of St. Lawrence

Baie de Chaleur

Straits of Northumberland

Bras d'or Lakes

BACKED BY PINE AND SPRUCE FORESTS
FINE SEA BATHING. BEAUTIFUL SCENERY.

Sport

in

Forest

Stream

and

Sea

Hunters of BIG GAME

Moose, Caribou, Deer, Bear
are invariably successful.

Anglers

for Salmon, Trout and
All Deep Sea Fishes
find the waters of Eastern
Canada unrivalled.

Publications giving full particulars are issued by

Intercolonial

RAILWAY

Write for free copies to

**GENERAL PASSENGER AGENT,
MONCTON,**

New Brunswick, Canada.

BOSTON & MAINE—MAINE CENTRAL—CANADIAN PACIFIC

THE

ALL RAIL LINE

DIRECT ROUTE BETWEEN
BOSTON—PORTLAND--BANGOR
All Points in the New England States
AND
NEW BRUNSWICK--NOVA SCOTIA
PRINCE EDWARD ISLAND
CAPE BRETON AND NEWFOUNDLAND

TWO FAST EXPRESS TRAINS

E A C H W A Y

EVERY WEEK DAY
BETWEEN BOSTON AND ST. JOHN, N. B.

ALL

PULLMAN SLEEPERS
AND PARLOR CARS

NEW

C. M. SURTT,

G. P. A., S. & M. RY.

BOSTON, MASS.

WILLIAM STITT,

G. P. A., C. P. RY.

MONTREAL, CAN.

F. E. BOOTHBY,

G. P. A., M. & C. RY.

PORTLAND, ME.

Eastern Steamship Company

THE INTERNATIONAL ROUTE
OFFERS TO THE

TOURIST,
FISHERMAN.
HUNTER,
CAMPER,
CANOEIST.
VACATIONIST,
RECREATION AND
HEALTH-SEEKER

Two lines of splendidly equipped and modern Steamships between BOSTON, PORTLAND and New Brunswick, Nova Scotia, Prince Edward Island, Cape Breton Island and Newfoundland.

Direct Service during the Summer Season from about June 20th to about October 1st.

Time between Boston and St. John only 19 hours.

Coastwise service the year round via Portland and Eastport.

NEW TURBINE STEEL STEAMSHIPS

THOROUGHLY MODERN EQUIPMENT

UNSURPASSED ACCOMMODATIONS

SPLENDID FACILITIES

UNEQUALLED SERVICE

Inquire of your nearest Ticket or Tourist Agent, or write to General Passenger Agent, for Timetable, illustrated literature and complete information concerning Fares, Schedules, Connections, Hotels, Camps, Guides, Resorts, etc.

CALVIN AUSTIN,

PRESIDENT.

C. C. BROWN,

GENERAL PASSENGER AGENT

FOSTER'S WHARF, BOSTON, MASS.

NEW BRUNSWICK



THE ROUTE
—TO THE—
**SPORTSMAN'S
HOME**

THE FINEST
PROVINCE
IN CANADA

FOR—

**FISHING
SHOOTING
CANOEING
CAMPING**

W. B. HOWARD, DISTRICT PASSENGER AGENT. ST. JOHN N. B.

Take your "Lady of the Beeches"
And your rifle and your line

—TO—

Nova Scotia & New Brunswick

THESE NAMES ARE SYNONYMOUS WITH

**MOOSE TROUT WOODCOCK
 SALMON**



LAND OF
"EVANGELINE ROUTE"

Dominion Atlantic Railway

DOMINION ATLANTIC RAILWAY STEAMSHIP LINES

DIRECT FROM BOSTON

Ask us for information re Clubs, Camps, Hotels, Lakes,
Streams and Meadows, with which these Sister Provinces
abound. Let us engage or put you in communication
with a competent guide. : : : : : : : : :

J. F. MASTERS,

NEW ENGLAND SUPT.

222 WASHINGTON ST.,

BOSTON, MASS.

R. U. PARKER,

GEN. PASS. AGENT.

KENTVILLE,

NOVA SCOTIA

P. GIFKINS, - GENERAL MANAGER

Washington County Railway

THE TIE THAT BINDS

BOSTON

Portland, Bangor, Bar Harbor, Calais,
Eastport & other New England Points

WITH

ST. STEPHEN

St. Andrews, St. George, St. John,
Campobello, Grand Manan, and other
New Brunswick Points. : : : :

**Two Through Trains Daily. Quick Dispatch.
Pullman Buffet Service.**

FULL INFORMATION FURNISHED UPON APPLICATION.

MORRIS MC DONALD,

F. E. BOOTHBY,

VICE-PRES. PORTLAND, ME.

GEN'L PASS. AGT., PORTLAND, ME.

G. W. MILLER,

COMMERCIAL AGENT, CALAIS, ME.

The Saint Martins Railway Company

INTERCOLONIAL RAILWAY

TO

HAMPTON JUNCTION

THENCE

Saint Martins-By-The-Sea

SITUATED ON

THE BAY OF FUNDY

**Grand Scenery. Excellent Fishing and Hunting.
Sea Bathing. Hotel and Private Board at reasonable rates**

For Time Tables, Tourist Books and other
information, write

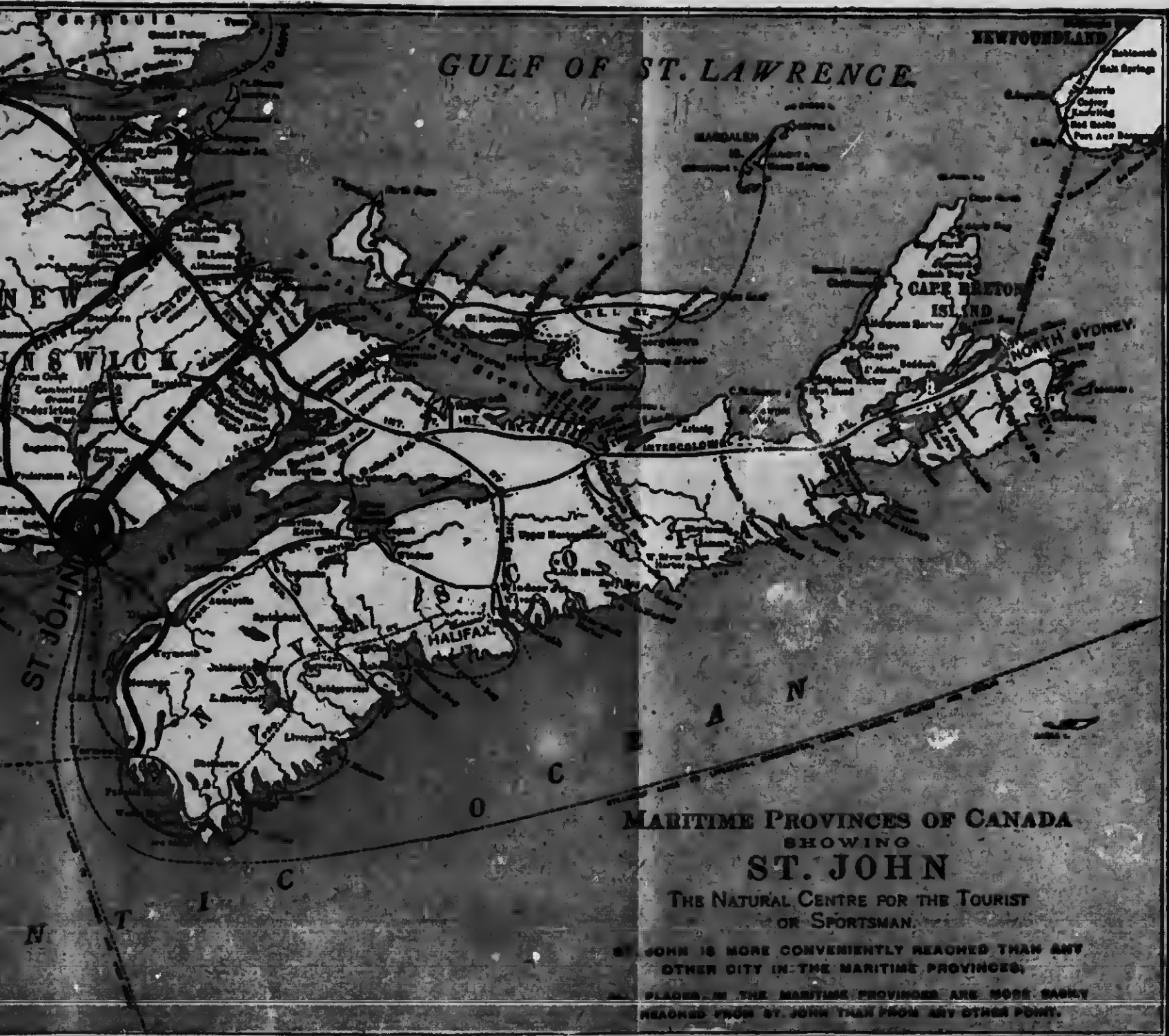
St. Martins Railway Company, St. John, N.B.

OR

W. E. SKILLEN, ST. MARTINS, N. B.







W
S
T
P
Mo
a
S
G
Sea
St.





