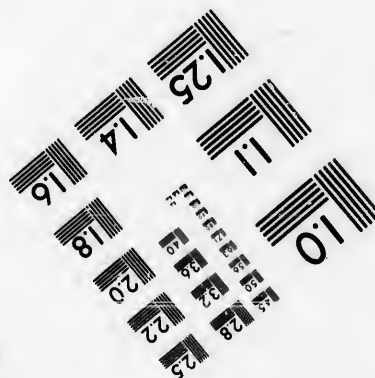
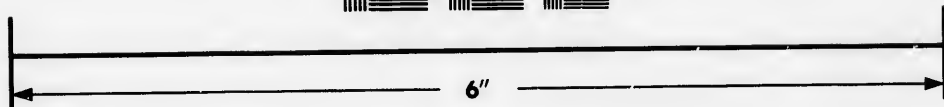
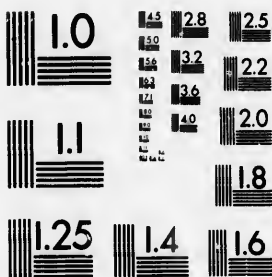


**IMAGE EVALUATION  
TEST TARGET (MT-3)**



**Photographic  
Sciences  
Corporation**

23 WEST MAIN STREET  
WEBSTER, N.Y. 14580  
(716) 872-4503



**CIHM/ICMH  
Microfiche  
Series.**

**CIHM/ICMH  
Collection de  
microfiches.**



**Canadian Institute for Historical Microreproductions / Institut canadien de microreproductions historiques**



**© 1986**

Technical and Bibliographic Notes/Notes techniques et bibliographiques

The institute has attempted to obtain the best original copy available for filming. Features of this copy which may be bibliographically unique, which may alter any of the images in the reproduction, or which may significantly change the usual method of filming, are checked below.

L'institut a microfilmé le meilleur exemplaire qu'il lui a été possible de se procurer. Les détails de cet exemplaire qui sont peut-être uniques du point de vue bibliographique, qui peuvent modifier une image reproduite, ou qui peuvent exiger une modification dans la méthode normale de filmage sont indiqués ci-dessous.

- |   |   |
|---|---|
| <input type="checkbox"/> Coloured covers/<br>Couverture de couleur  | <input type="checkbox"/> Coloured pages/<br>Pages de couleur  |
| <input type="checkbox"/> Covers damaged/<br>Couverture endommagée   | <input type="checkbox"/> Pages damaged/<br>Pages endommagées  |
| <input type="checkbox"/> Covers restored and/or laminated/<br>Couverture restaurée et/ou pelliculée   | <input type="checkbox"/> Pages restored and/or laminated/<br>Pages restaurées et/ou pelliculées   |
| <input type="checkbox"/> Cover title missing/<br>Le titre de couverture manque  | <input checked="" type="checkbox"/> Pages discoloured, stained or foxed/<br>Pages décolorées, tachetées ou piquées  |
| <input type="checkbox"/> Coloured maps/<br>Cartes géographiques en couleur  | <input type="checkbox"/> Pages detached/<br>Pages détachées   |
| <input type="checkbox"/> Coloured ink (i.e. other than blue or black)/<br>Encre de couleur (i.e. autre que bleue ou noire)  | <input type="checkbox"/> Showthrough/<br>Transparence   |
| <input type="checkbox"/> Coloured plates and/or illustrations/<br>Planches et/ou illustrations en couleur   | <input type="checkbox"/> Quality of print varies/<br>Qualité inégale de l'impression  |
| <input checked="" type="checkbox"/> Bound with other material/<br>Relié avec d'autres documents   | <input type="checkbox"/> Includes supplementary material/<br>Comprend du matériel supplémentaire  |
| <input type="checkbox"/> Tight binding may cause shadows or distortion along interior margin/<br>La reliure serrée peut causer de l'ombre ou de la distorsion le long de la marge intérieure  | <input type="checkbox"/> Only edition available/<br>Seule édition disponible  |
| <input type="checkbox"/> Blank leaves added during restoration may appear within the text. Whenever possible, these have been omitted from filming/<br>Il se peut que certaines pages blanches ajoutées lors d'une restauration apparaissent dans le texte, mais, lorsque cela était possible, ces pages n'ont pas été filmées. | <input type="checkbox"/> Pages wholly or partially obscured by errata slips, tissues, etc., have been refilmed to ensure the best possible image/<br>Les pages totalement ou partiellement obscurcies par un feuillet d'errata, une pelure, etc., ont été filmées à nouveau de façon à obtenir la meilleure image possible. |
| <input checked="" type="checkbox"/> Additional comment(s):<br>Commentaires supplémentaires:   | [Printed ephemera] [4] p.   |

This item is filmed at the reduction ratio checked below/  
Ce document est filmé au taux de réduction indiqué ci-dessous.

10X	12X	14X	16X	18X	20X	22X	24X	26X	28X	30X	32X
				/							

The copy filmed here has been reproduced thanks to the generosity of:

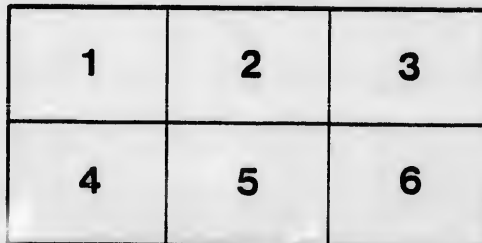
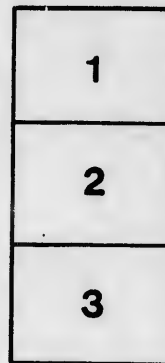
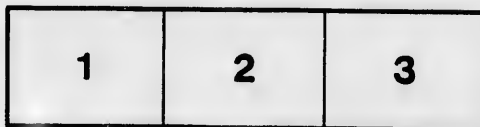
D. B. Weldon Library  
University of Western Ontario  
(Regional History Room)

The images appearing here are the best quality possible considering the condition and legibility of the original copy and in keeping with the filming contract specifications.

Original copies in printed paper covers are filmed beginning with the front cover and ending on the last page with a printed or illustrated impression, or the back cover when appropriate. All other original copies are filmed beginning on the first page with a printed or illustrated impression, and ending on the last page with a printed or illustrated impression.

The last recorded frame on each microfiche shall contain the symbol  $\rightarrow$  (meaning "CONTINUED"), or the symbol  $\nabla$  (meaning "END"), whichever applies.

Maps, plates, charts, etc., may be filmed at different reduction ratios. Those too large to be entirely included in one exposure are filmed beginning in the upper left hand corner, left to right and top to bottom, as many frames as required. The following diagrams illustrate the method:



L'exemplaire filmé fut reproduit grâce à la générosité de:

D. B. Weldon Library  
University of Western Ontario  
(Regional History Room)

Les images suivantes ont été reproduites avec le plus grand soin, compte tenu de la condition et de la netteté de l'exemplaire filmé, et en conformité avec les conditions du contrat de filmage.

Les exemplaires originaux dont la couverture en papier est imprimée sont filmés en commençant par le premier plat et en terminant soit par la dernière page qui comporte une empreinte d'impression ou d'illustration, soit par le second plat, selon le cas. Tous les autres exemplaires originaux sont filmés en commençant par la première page qui comporte une empreinte d'impression ou d'illustration et en terminant par la dernière page qui comporte une telle empreinte.

Un des symboles suivants apparaîtra sur la dernière image de chaque microfiche, selon le cas: le symbole  $\rightarrow$  signifie "A SUIVRE", le symbole  $\nabla$  signifie "FIN".

Les cartes, planches, tableaux, etc., peuvent être filmés à des taux de réduction différents. Lorsque le document est trop grand pour être reproduit en un seul cliché, il est filmé à partir de l'angle supérieur gauche, de gauche à droite, et de haut en bas, en prenant le nombre d'images nécessaire. Les diagrammes suivants illustrent la méthode.

THE  
**BACONIAN CLUB**

LONDON, - CANADA.



**Fourth • Annual • Dinner**

(AT "THE GRIGG,")

—••• Friday, 11th May, 1888. •••—

‘Dost thou think because thou art virtuous there shall be  
no more cakes and ale?’—I welfth Night.

‘He has not bin’d \* \* \* the blood is cold.’—Coriolanus.

# MENU

*“We’ll suck the sweets out of the comb,  
And make the gods repine,  
As they do feast in Jove’s great room,  
To see with what we dine.”—DRAYTON.*

## SOUP

Ox Tail

## FISH

Baked Whitefish, Lobster Sauce

## BOILED

Mutton, Caper Sauce

Beef Tongue

Yorkshire Cured Ham

Corned Beef and Cabbage

Chicken, Parsley Sauce

## ROASTS

Ribs of Beef, Yorkshire Pudding

Spring Lamb, Mint Sauce

Fillet of Veal, Stuffed

Pork, Apple Sauce

Mutton, Brown Potatoes

## COLD DISHES

Beef

Ham

Mutton

Corned Beef

Tongue

## ENTREES

Apple Fritters, Rum Sauce

Chicken Pot Pie

Macaroni and Cheese

Fricasseed Sweet Breads

*“With mirth and laughter let old wrinkles come.”—SHAKESPEARE.*

## RELISHES

Chutney Sauce

Pickles

Anchovy Sauce

Chow Chow

Tomato Catsup

Worcestershire Sauce

## VEGETABLES

Mashed Potatoes

Boiled Potatoes

Tomatoes

Sweet Corn

Green Peas

## PASTRY

English Plum Pudding, Brandy Sauce

Delmonico Pudding, Cream Sauce

Green Apple Pie

Lemon Pie

Rhubarb Pie

Blackberry Tart

## DESSERT

*“Do you look for cakes and ale here, you rude rascals?”—HEN. VIII.*

Vanilla Ice Cream

Cream Cake

Rum Jelly

Assorted Nuts

Raisins

Cheese

Apples

Bananas

Oranges

BLACK AND GREEN TEA

JAVA COFFEE

*“Nunc est bibendum fratres.”—HORACE.*

*“I count myself in nothing else so happy  
As in a soul remembering my good friends.”—Drayton.*

"The spirits I have raised abandon me."—Byron.

# TOASTS

"I'll speak to it though hell itself shall gape  
And bid me hold my peace."—*Hamlet*.

- 1.—"The Queen." . . . . .  
"Imperial power, whose liberties are marching round the earth."—*Mair*.
- 2.—"The Baconian Club." . . . . . A. D. HARDY.  
"A proper stripling, and an amorous."—*Taming of the Shrew*.
- 3.—"Our Country's Youth." . . . . . R. A. LITTLE.  
"The great secretary of nature and all learning."—*Watson*.
- 4.—"Lord Bacon." . . . . . GEO. MOFFHEAD.  
"Tell (for you can) what is it to be wise?  
'Tis but to know how little can be known;  
To see all others' faults and feel our own."—*Pope*.
- 5.—"Education." . . . . . JNO. STEPHENSON,  
W. THOMPSON.  
"The first thing we do, let's kill all the lawyers."—*Hen. VI*.
- 6.—"The Learned Professions." . . . . . C. T. GLASS,  
R. A. BAYLY.  
"This is the age of new inventions for killing bodies  
and for saving souls"—*Byron*.
- 7.—"Our Canadian Scientists." . . . . . JOHN DEARNESS,  
R. A. GRAY.  
"The sentinel of our liberties."
- 8.—"The Press." . . . . . C. J. WINLOW,  
G. N. WEEKES.  
"Earth has not anything to show more fair."—*Wordsworth*.
- 9.—"The Ladies." . . . . . T. G. MURPHY.  
"Odd quirks and remnants of wit."—*Much Ado*.
- 10.—"Our Fakirs." . . . . . BY ALL OF THEM.

"They spake not a word;  
But like dumb statues or breathless stones,  
Star'd at each other, and look'd deadly pale."—Richard III



# B. C.

## Officers.

President—A. D. HARDY. Vice-President—N. W. ROWELL.

Sec.-Treas.—R. A. LITTLE.

### EXECUTIVE COMMITTEE :

C. G. JARVIS      GEORGE MOREHEAD.      D. H. TENNENT

---

## Melange.

### SONGS :

R. A. GRAY.      C. T. GLASS.      A. D. HARDY.

### RECITALS :

“ Like a dull actor, now,  
I have forgotten my part, and I am out.”

—*Coriolanus.*

D. H. TENNENT.      R. A. LITTLE.      GEORGE MOREHEAD

◆◆◆◆◆

“ The iron tongue of midnight hath tolled twelve.”

—*Midsummer Night's Dream.*

“ It is a reeling world, indeed, my lord.”

—*Rich. III.*



SEASON, 1887-'8.



