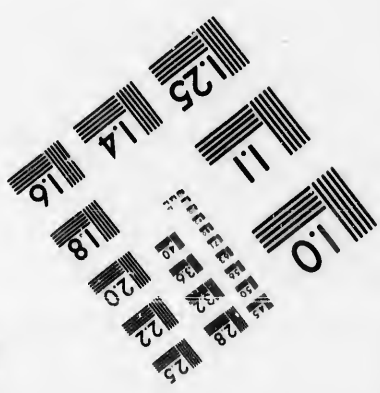
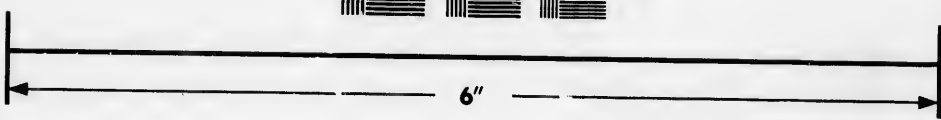
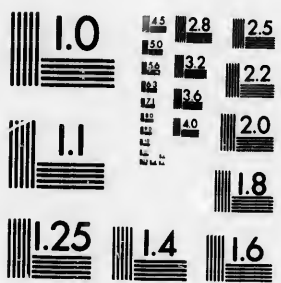


**IMAGE EVALUATION
TEST TARGET (MT-3)**



**Photographic
Sciences
Corporation**

23 WEST MAIN STREET
WEBSTER, N.Y. 14580
(716) 872-4503

**CIHM/ICMH
Microfiche
Series.**

**CIHM/ICMH
Collection de
microfiches.**



Canadian Institute for Historical Microreproductions / Institut canadien de microreproductions historiques

© 1986

Technical and Bibliographic Notes/Notes techniques et bibliographiques

The Institute has attempted to obtain the best original copy available for filming. Features of this copy which may be bibliographically unique, which may alter any of the images in the reproduction, or which may significantly change the usual method of filming, are checked below.

L'Institut a microfilmé le meilleur exemplaire qu'il lui a été possible de se procurer. Les détails de cet exemplaire qui sont peut-être uniques du point de vue bibliographique, qui peuvent modifier une image reproduite, ou qui peuvent exiger une modification dans la méthode normale de filmage sont indiqués ci-dessous.

- | | |
|--|--|
| <input checked="" type="checkbox"/> Coloured covers/
Couverture de couleur | <input type="checkbox"/> Coloured pages/
Pages de couleur |
| <input checked="" type="checkbox"/> Covers damaged/
Couverture endommagée | <input checked="" type="checkbox"/> Pages damaged/
Pages endommagées |
| <input type="checkbox"/> Covers restored and/or laminated/
Couverture restaurée et/ou pelliculée | <input type="checkbox"/> Pages restored and/or laminated/
Pages restaurées et/ou pelliculées |
| <input type="checkbox"/> Cover title missing/
Le titre de couverture manque | <input checked="" type="checkbox"/> Pages discoloured, stained or foxed/
Pages décolorées, tachetées ou piquées |
| <input type="checkbox"/> Coloured maps/
Cartes géographiques en couleur | <input type="checkbox"/> Pages detached/
Pages détachées |
| <input checked="" type="checkbox"/> Coloured ink (i.e. other than blue or black)/
Encre de couleur (i.e. autre que bleue ou noire) | <input type="checkbox"/> Showthrough/
Transparence |
| <input type="checkbox"/> Coloured plates and/or illustrations/
Planches et/ou illustrations en couleur | <input type="checkbox"/> Quality of print varies/
Qualité inégale de l'impression |
| <input type="checkbox"/> Bound with other material/
Relié avec d'autres documents | <input type="checkbox"/> Includes supplementary material/
Comprend du matériel supplémentaire |
| <input type="checkbox"/> Tight binding may cause shadows or distortion
along interior margin/
La reliure serrée peut causer de l'ombre ou de la
distorsion le long de la marge intérieure | <input type="checkbox"/> Only edition available/
Seule édition disponible |
| <input type="checkbox"/> Blank leaves added during restoration may
appear within the text. Whenever possible, these
have been omitted from filming/
Il se peut que certaines pages blanches ajoutées
lors d'une restauration apparaissent dans le texte,
mais, lorsque cela était possible, ces pages n'ont
pas été filmées. | <input type="checkbox"/> Pages wholly or partially obscured by errata
slips, tissues, etc., have been refilmed to
ensure the best possible image/
Les pages totalement ou partiellement
obscurcies par un feuillet d'errata, une pelure,
etc., ont été filmées à nouveau de façon à
obtenir la meilleure image possible. |
| <input type="checkbox"/> Additional comments:/
Commentaires supplémentaires: | |

This item is filmed at the reduction ratio checked below/
Ce document est filmé au taux de réduction indiqué ci-dessous.

10X	12X	14X	16X	18X	20X	22X	24X	26X	28X	30X	32X
					↓						

The copy filmed here has been reproduced thanks to the generosity of:

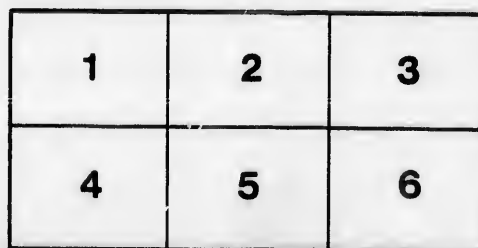
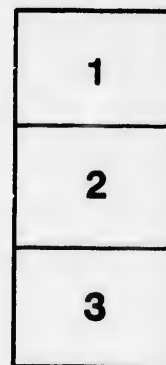
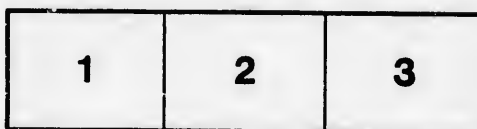
Seminary of Quebec
Library

The images appearing here are the best quality possible considering the condition and legibility of the original copy and in keeping with the filming contract specifications.

Original copies in printed paper covers are filmed beginning with the front cover and ending on the last page with a printed or illustrated impression, or the back cover when appropriate. All other original copies are filmed beginning on the first page with a printed or illustrated impression, and ending on the last page with a printed or illustrated impression.

The last recorded frame on each microfiche sheet contains the symbol \rightarrow (meaning "CONTINUED"), or the symbol ∇ (meaning "END"), whichever applies.

Maps, plates, charts, etc., may be filmed at different reduction ratios. Those too large to be entirely included in one exposure are filmed beginning in the upper left hand corner, left to right and top to bottom, as many frames as required. The following diagrams illustrate the method:



L'exemplaire filmé fut reproduit grâce à la générosité de:

Séminaire de Québec
Bibliothèque

Les images suivantes ont été reproduites avec le plus grand soin, compte tenu de la condition et de la netteté de l'exemplaire filmé, et en conformité avec les conditions du contrat de filmage.

Les exemplaires originaux dont la couverture en papier est imprimée sont filmés en commençant par le premier plat et en terminant soit par la dernière page qui comporte une empreinte d'impression ou d'illustration, soit par le second plat, selon le cas. Tous les autres exemplaires originaux sont filmés en commençant par la première page qui comporte une empreinte d'impression ou d'illustration et en terminant par la dernière page qui comporte une telle empreinte.

Un des symboles suivants apparaîtra sur la dernière image de chaque microfiche, selon le cas: le symbole \rightarrow signifie "A SUIVRE", le symbole ∇ signifie "FIN".

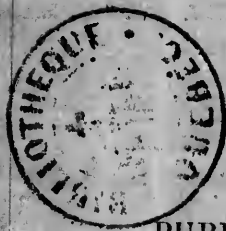
Les cartes, planches, tableaux, etc., peuvent être filmés à des taux de réduction différents. Lorsque le document est trop grand pour être reproduit en un seul cliché, il est filmé à partir de l'angle supérieur gauche, de gauche à droite, et de haut en bas, en prenant le nombre d'images nécessaire. Les diagrammes suivants illustrent la méthode.

219 Guides Can. 64, 115

THE
STRANGER'S ILLUSTRATED
GUIDE



TO THE
CITY OF MONTREAL.



Bibliothèque,
Le Séminaire de Québec,
30 rue de l'Université,
Québec 4, QUE.

PUBLISHED BY

PRICE 25 CENTS.

MONTREAL:

PRINTED BY M. LONGMOORE & CO., 67 GREAT ST. JAMES STREET.

1865

CASH DRY GOODS STORE.

Gagnon, Watson & Co.

IMPORTERS OF AND WHOLESALE AND RETAIL DEALERS IN

BRITISH, FRENCH AND AMERICAN

DRY GOODS

No. 377 NOTRE DAME STREET,

(2nd door East from St. John Street.)

M O N T R E A L .

Messrs. G., W. & Co. would respectfully invite visitors to the city to call and examine their superb and elegant stock of

FANCY AND STAPLE DRY GOODS.

Their leading departments are:

SILKS—Black, Gros Grain, Gros de Naple, Radzemere, Tissues, Fancy, Plain and Coloured in every shade and variety.

SHAWLS, DRESS GOODS, MANTLES, HOSIERY, GLOVES, LACE GOODS, RIBBONS, SEWED MUSLINS,

AND

BRADLEY'S CELEBRATED DUPLEX STEEL HOOP SKIRTS,

Together with a very extensive and well assorted stock of

**FAMILY AND COMPLIMENTARY
MOURNING GOODS.**

The largest and best assorted stock of Woollen, Merino and Cotton

H O S I E R Y

to be found in the city.

ALEXANDRE'S AND DUCHESSE'S KID GLOVES

In all shades and sizes.

40

THE
STRANGER'S ILLUSTRATED
GUIDE

TO THE
CITY OF MONTREAL
BEING A
SYNOPSIS OF ITS HISTORY, STATISTICS, &c.

AND A THOROUGH GUIDE TO ITS
DRIVES, PUBLIC BUILDINGS, PUBLIC WORKS
AND PUBLIC RESORTS

ALSO GIVING THE
CARRIAGE TARIFF, DISTANCE AND TIME-TABLES

BY
JOHN LANGFORD.



PUBLISHED BY D. ROSS.

MONTREAL:
PRINTED BY M. LONGMOORE & CO., 67 GREAT ST. JAMES STREET
1865

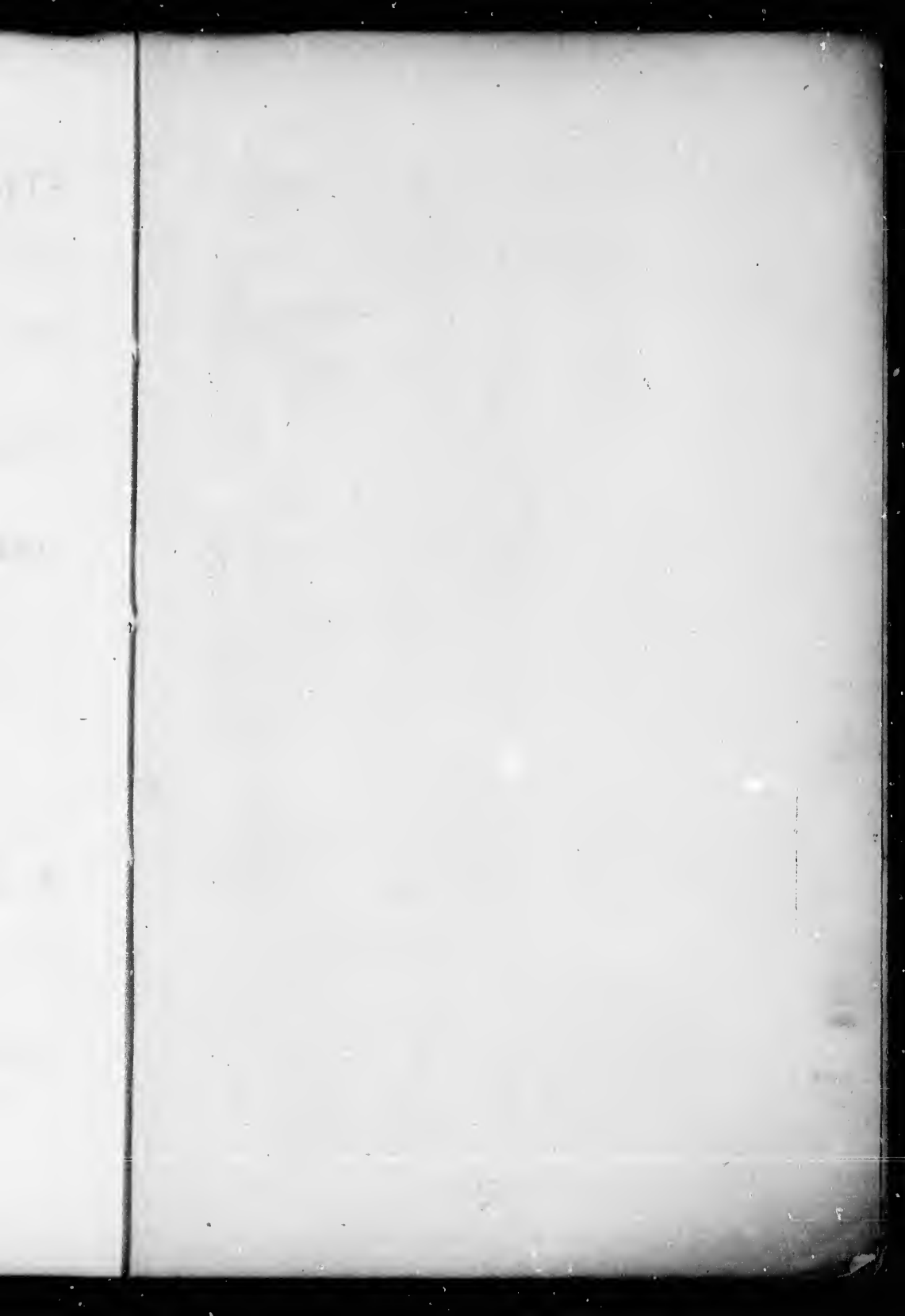
THE UNIVERSITY OF CHICAGO

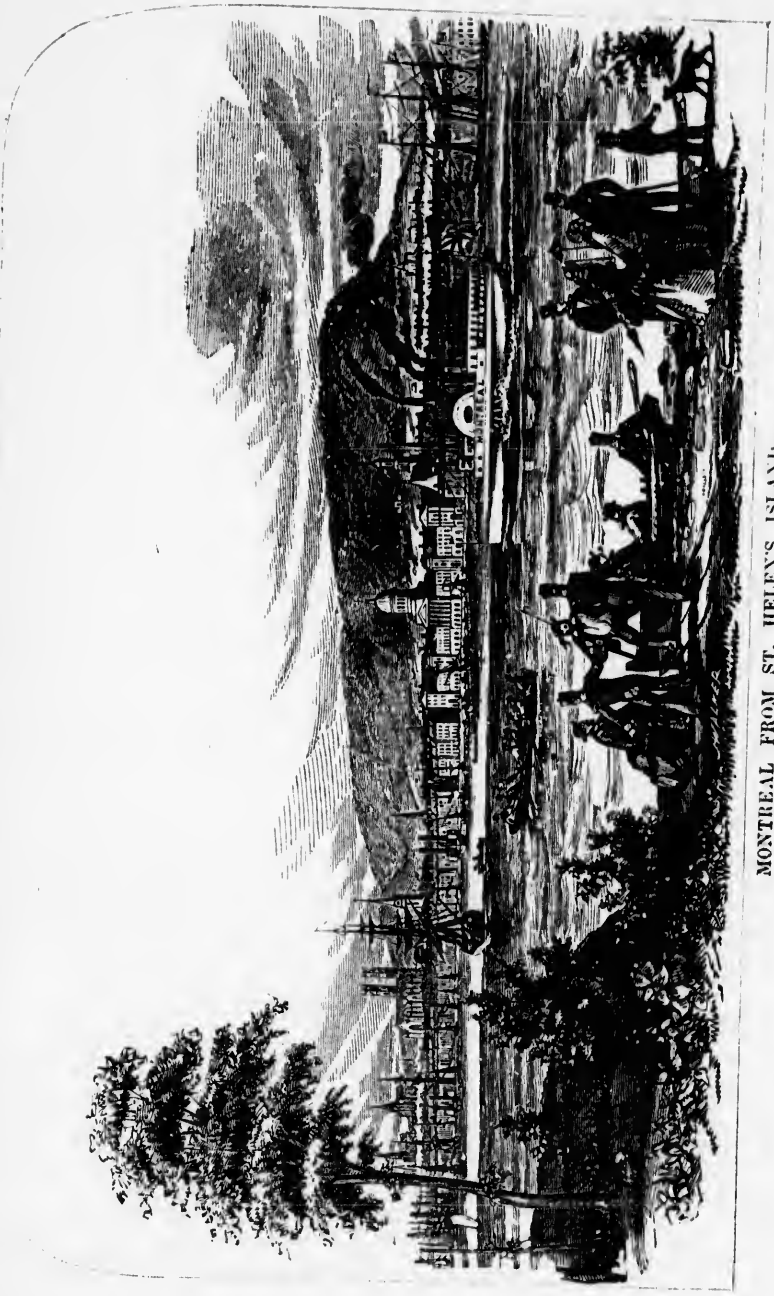
PHILOSOPHY

BY JOHN DEWEY

PHILOSOPHY

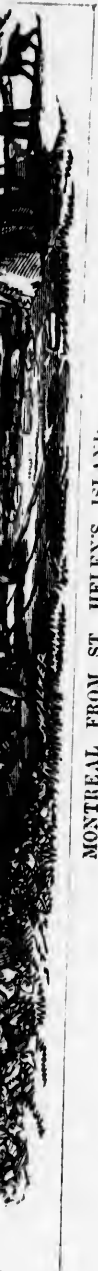
BY JOHN DEWEY





MONTREAL FROM ST. HELEN'S ISLAND.

Preface
Street
Montr
Public
Public
Drives
City C
Tariff
Curre
Fire A
Time
Table



MONTREAL FROM ST. HELEN'S ISLAND.

CONTENTS.

	PAGE
Preface	5
Street Guide	7
Montreal—A Sketch of its History, Statistics, &c.....	9
Public Buildings, Squares, &c.....	15
Public Works, &c.....	39
Drives, &c., in and around the City.....	41
City Council.....	44
Tariffs of Coaches, Cabs, Caleches, &c	45
Currency Table	45
Fire Alarm Telegraph Signal Boxes.....	46
Time Indicator.....	47
Table of Distances	47

The
long
thoro
then
direc
whet
that
stran

Th
lofty
mate
obser
sourc
little
entit
print

To
intra

PREFACE.

The following pages are intended to supply what has long appeared a desideratum to the visitor, viz., a thorough and reliable Guide through the city. Not then in antagonism of any previous effort in the same direction—not in depreciation of the works of others, whether old or new, but in the hearty and willing hope that I am rendering some little aid to the traveller, stranger, or citizen, these pages are put forth.

The descriptions are necessarily merely practical, a lofty style would be superfluous. In the selection of material for description I have, in addition to my own observations, availed myself of the various reliable sources of information, and have made free use of a little work published in 1857, by Messrs. Salter & Ross, entitled the "Strangers Guide," now, I believe, out of print.

To those who are apt to find fault, I would say "*Iliacos intra muros peccatur et extra.*"

JOHN LANGFORD.

On e
and it
found

Beaver
Belmont
Berthel
Bleury
Bonse
Chen
Colleg
Comm
Comm
Cotté
Craig
Dalho
Dorch
Drum
Found
Great
Hanov
Lagau
McCor
McGill
Notre
Ottaw
Point
Radeg
Sherbr
St. An
St. Bor
St. Cat
St. Cor
St. Der
St. Dor
St. Fra
St. Ga
St. Hel
St. Jos
St. Law
St. Mar
St. Nic
St. Pau
St. Sac
Univers
Visitati
Water
William

STREET GUIDE.

NOTICE TO READERS.

On entering any street, when you find out its name, look at the following STREET INDEX and it will point out the page on which the description of that street and its buildings is to be found :

	Page.
Beaver Hall Hill, from Jurors to Belmont.....	15
Belmont st., from Beaver Hall terrace west to St. Genevieve st.....	15
Berthelet st., from Bleury st. west to Union av.....	16
Bleury st., from Craig st. north to Sherbrooke st.....	16
Bonsecours st., from St. Paul st. north to Craig st.....	16
Chenneville st., from Craig st. north to Dorchester st.....	16
College st., from McGill st. west to Chaboillez st.....	16
Commissioners st., from Water st. west to McGill st.....	17
Commor st., from Custom House sq. west to the Canal Basin.....	17
Cotté st., from Craig st. north to Lagauchetière st.....	18
Craig st., from Colborne Avenue west to St. Bonaventure st.....	18
Dalhousie st., from the Canal north to Wellington st.....	18
Dorchester st., from Colborne Avenue west to the City boundary.....	19
Drummond st., from Dorchester st. north to the Mountain.....	21
Foundling st., from Calliers west to McGill st.....	21
Great St. James st., from Place d'Armes west to McGill street.....	22
Hanover st., from Belmont st. north to Dorchester.....	25
Lagauchetière st., from Shaw st. west to St. Monique st.....	25
McCord st., from Wellington Bridge north to St. Joseph st.....	26
McGill st., from the Canal north to Victoria sq.....	26
Notre Dame st., from Dalhousie square west to McGill st.....	26
Ottawa st., from Queen st. west to Canal basin.....	29
Point St. Charles.....	29
Radegonde st., from Craig st. north to Lagauchetière st.....	29
Sherbrooke st., from Amherst st. west to the City boundary.....	29
St. Antoine st. from Craig st. west to City boundary.....	30
St. Bonaventure st., from Victoria square west to the City boundary.....	31
St. Catherine st., from Dufresne st. west to the City boundary.....	32
St. Constant st., from Craig st. north to Sherbrooke st.....	33
St. Denis st., from Craig st. north to the City boundary.....	33
St. Dominique st., from Craig st. north to Sherbrooke st.....	34
St. Francois Xavier st., from Commissioners st. north to Craig st.....	34
St. Gabriel st., from the river north to Craig st.....	34
St. Helcn st., from Lemoine st. north to Notre Dame st.....	35
St. Joseph st., from McGill st. west to the City boundary.....	35
St. Lawrence (Main) st., from Craig st. north to the City boundary.....	35
St. Mary st., from the City boundary west to Dalhousie square.....	35
St. Nicholas st., from Commissioners st. north to St. Sacrament st.....	36
St. Paul st., from Dalhousie square west to McGill st.....	36
St. Sacrament st., from St. Francois Xavier st. west to St. Peter st.....	37
University st., from Dorchester st. north to Sherbrooke st.....	37
Visitation st., from St. Mary st. north to the City boundary.....	38
Water st., from Voltigeurs st. west to Friponne st.....	38
William st., from McGill st. west to the City boundary.....	38

INDEX TO ILLUSTRATIONS.

	PAGE.
Bank of British North America	16
Bank of Montreal	18
Bonsecours Market.....	36
City Bank	16
City of Montreal	3
Colonial Life Assurance Company's Building.....	20
Court House	30
French Cathedral	28
McGill College.....	16
Mechanics' Institute	24
Merchants' Exchange.....	34
Molsons Bank.....	23
Post Office.....	23
St. Andrew's Church	15
St. Patrick's Church.....	26
Victoria Bridge.....	33

Ge
name
1535
the g
city
symp
he g
stre
and y
those
if be
by th
subje
the f
tial s
"
" out
" pal
" pur
" gu
" or
" nu

MONTREAL.

A SKETCH OF ITS HISTORY, STATISTICS, &c., &c.

Going back a period of 330 years, we seem to see JACQUES CARTIER, a name ever memorable in the history of Canada, on the 3rd of October, 1535, entering for the first time the little Indian village "Hochelaga," the germ or nucleus of first, the town of Mount Royal, and so, of the city of Montreal;—eventful visit this, fraught with great results. We can sympathize with the emotions which would fill the mind of the explorer, as he gazed around on "the beautiful panorama of thirty leagues radius, that stretched out of the view from the eastern promontory of the mountain;" and yet we cannot suppress a feeling of pity, as we think of the fate of those simple yet valiant sons of the forest, who gathered round Cartier, as if before a superior being, and whose race has been so sternly driven back by the steady advance of civilization. But we may not pause upon this subject, and so we ask our visitors and citizens to recognize, if they can, the features of the following picture of ancient Montreal, in the substantial stone and brick of our modern architecture:—

"The way to the village was through large fields of indian corn. Its outline was circular; and it was encompassed by three separate rows of palisades or rather picket fences, one within the other, well secured and put together. A single entrance was left in this rude fortification, but guarded with pikes and stakes, and every precaution taken against siege or attack. The cabins or lodges of the inhabitants, about fifty in number, were constructed in the form of a tunnel, each fifty feet in

PAGE.

..... 16
..... 18
..... 36
..... 16
..... 3
..... 20
..... 30
..... 28
..... 16
..... 24
..... 34
..... 23
..... 22
..... 15
..... 26
..... 33

“length by fifteen in breadth. They were formed of wood covered with bark. Above the doors of these houses as well as along the outer rows of the palisades, ran a gallery ascended by ladders, where stones and other missiles were ranged in order for the defence of the place. Each house contained several chambers, and the whole were so arranged as to enclose an open court yard, where the fire was made.”

Again we pass on and by 200 years, with all their whirl of exciting events; and in 1760, the date of the British possession, we find Montreal a well peopled town, “of an oblong form, surrounded by a wall flanked with eleven redoubts, which served instead of bastions. The ditch was about eight feet deep and of a proportionable breadth, but dry; it had also a fort or citadel, the batteries of which commanded the streets of the town from one end to the other.”

Again, striding on to more modern dates, we find that though the city was increasing in population, and augmenting its trade, yet a New York writer, some forty-five years ago, thus characterized Montreal:—“The approach to Montreal conveyed no prepossessing idea of the enterprise of its municipality; ships, brigs and steamboats lay on the margin of the river at the foot of a hill. No long line of wharves built of the substantial free stone, of which there is abundance in the neighbourhood, afforded security to vessels and owners; the commercial haven looked as ragged and as muddy as the shores of New Nederland when the Guedev-row first made her appearance off the Battery.”

McGregor, too, in his British America, a work of not very ancient date, thus described Montreal:—“Betwixt the Royal Mountain and the River, on a ridge of gentle elevation, stands the town. * * * * There are no wharves at Montreal, and the ships and steamers lie quietly in pretty deep water, close to the clayey and generally filthy bank of the city.”

Such then was our city in the times bygone. In the days of our fathers, no stately steam-ships ferried us across the Atlantic, no floating palaces conveyed us safely, speedily and securely up and down our noble St. Lawrence, and across, as the “Times” has fitly termed it, “that magnificent series of inland seas, the high road from Europe to the North American continent.” Then, no great chain of railway linked town to town, and city to city, almost annihilating distance. Then, the journey to Detroit was a toilsome matter of several weeks, and that to Broekville, short even as is the distance, occupied, with heavy cumbrous *bateaux*, three weeks. Now how changed! The wand of some fairy king has surely been here. But no! industry, intelligence, labour, capital, all combined, and working

for the advancement of this rising colony, have produced the marvellous changes which meet us on every hand.

This, the largest and most populous city in British North America, and the commercial capital of the province, was founded in 1642, under the name of "Ville-Marie," near the site of the Indian village "Hochelaga." The name was afterwards changed to "Mount Royal," from the mountain which overlooks the city. It is situated on an island bearing the same name, in the combined embrace of the Ottawa and St. Lawrence,—which latter river at this point is upwards of a mile and a half wide,—180 miles S. W. of Quebec, 420 miles N. of New-York, and about 600 miles from the sea. It possesses, partly from its latitude, and partly from the great area of water with which it is surrounded, a mildness and softness of climate unknown to any other part of Lower Canada, is the largest and most fertile island in Canada, is 32 miles long, 10½ miles wide, and is considered the garden of the Lower Province (area, 197 square miles). The soil is in most parts excellent, and produces nearly every kind of grain, fruit, and vegetable in perfection. Surface level, with the exception of the mountain near the city; it is, however, diversified by several gentle ridges, having a tendency from N. E. to S. W., which are designated coteaux. The main branch of the Ottawa, which is the timber highway to Quebec, passes North of the island, and enters the St. Lawrence about 18 miles below the city; about one-third of its waters are, however, discharged into Lake St. Louis, and joining but not mingling at Caughnawaga, the two distinct bodies pass over the Sault St. Louis and the Lachine Rapids—the dark waters of the Ottawa washing the quays of the city of Montreal, while the blue St. Lawrence laves the opposite shore. Nor do they merge their distinctive character until they are several miles below the city. The quays of Montreal are unsurpassed by those of any city in America; built of solid limestone, and uniting with the locks and cut stone wharves of the Lachine Canal, they present for several miles a display of masonry which has few parallels. Unlike the levees of the Ohio and Mississippi, no unsightly warehouses disfigure the river side. A broad terrace, faced with gray limestone, the parapet of which is surmounted with a substantial iron railing, divides the city from the river throughout its whole extent. There are over one hundred and fifty-six miles of streets and lanes in the city. Of these, a large number are watered daily during the summer months, by the Fire Department, (they levying a small tax on the storekeepers in the streets watered, to defray expenses,) in which service the Department employs numerous

horses, patent watering machines, and men, saving to the City Treasury an annual item of \$2,000, which was the general appropriation when a distinct one was made for this special service.

In the rear of the city, running parallel to the river, at the distance of about a mile and a half from the water's edge, rises a long ridge of rocky and precipitous hill, some 700 feet in height, from which derived the original name, "Mount Royal." The summit of this mountain commands a view extensive and diversified. The city, with its towers, and spires, and public buildings, covers at the feet of the spectator, an area of over three miles by about one and a half. In mid-river lies the umbrageous island of St. Helens—half park, half arsenal, glistening in the morning sun like an emerald set in gold. The St. Lawrence, a mile and a half wide at the narrowest, extends east and west as far as the eye can reach, covered with ships fresh from the ocean, and by steamers numberless, leaving on the wind their murky trail. In mid-landscape, that architectural marvel, the Victoria Bridge, spans the river, in all its strength and beauty; and the ear can detect the roar of each passing train which rushes through its iron ribs. Beyond, the rail-tracks wind through a champaign country, settled for two centuries, where farm houses and farm buildings line the roads like streets, rich in population and rustic wealth; while in the distance the twin mountains of Belœil and Montarville, sights even more picturesque than their names, rise from the plain, insulæ of beauty amid a sea of verdure. But the eye can hardly tear itself from the scene of cultivation close around. The slopes of the mountain, and the rich alluvial soil at its foot, are one entire garden. Villas and pleasure-grounds cover the hill-side. A beautiful reservoir, cleft out of the rock, glitters in the sunlight with all the formal beauty of a *paysage* by Watteau. The costumes and gay colours of the present day heighten the illusion, and impart health and freshness to the city spread beneath. In the distant valleys, the agricultural skill of the English farmer combines with old French minuteness and precision to create a scene

"Ever changing, ever new;
When will the landscape tire the view?
The fountains fall; the river flow;
The woody valley, warm and low;
The windy summit, wild and high—
Roughly reaching to the sky;
The pleasant seat; the ruined tower;
The naked rock; the shady bower;
The town—the village—dome—and farm:
Each gives to each a double charm—
Like pearls upon an Ethiop's arm."

But the spectator from the hill-top, or the frequenter of Great St. James

Street, or of the Rue Notre Dame, must not suppose that in 1812, the year of the war with the United States, things were as they now are. Not for twenty-five years after, did a civic government provide for the wants of advancing civilization; not for twenty-five years, did gas-lights, or pavements, or hydrants exist. The long line of banks and stately edifices which now adorn Great St. James street, rise from an abandoned graveyard, which in 1812, was bounded by the crumbling city defences. Fortification lane was the foot of the town wall; Craig street was the town ditch; beyond, on the upland, were country houses and orchards. In the same year, Notre Dame street, now flashing with plate glass and the piled stores of jewellery and brocade, was a narrow street of low, cozy Canadian houses, one story and a half high—the *sancta* of much genial grace and of an unbounded hospitality. The nocturnal reveller—and there was a good deal of revelry in those days—who slipped off the disjointed stones, mis-called *trottoir*, plunged mid-leg in the mud, in the palpable darkness, without hope of refuge in a street-railway car, or of help from a sleepy policeman. The old Catholic parish church, which in early days gave a Catholic welcome to the churchless Protestant congregation, stood lengthwise in front of the present noble church of Notre Dame—grand in design, though somewhat marred by a too great severity of style. Those splendid wharves faced with miles of cut stone, unequalled in America, and rivalled only in Europe by the docks of Liverpool, or the quays of St. Petersburg, have replaced a nauseous bank, heaped with filth and garbage; and a muddy islet, the receptacle of driftwood and drowned animals; and a turbid stream, from whence the strongest swimmer never rose. Montreal of the present day, with its palatial residences,—its places of public resort,—markets, numerous, convenient and ornamental,—with its cathedrals, churches, colleges, convents,—with its multiplied institutions and social improvements,—with a population of over 120,000 souls, is as superior to the Montreal of 1840 as the Montreal of 1840 was in advance of the Montreal of 1812; and yet at that time it was the commercial heart of Canada: the fountain of supply: the focus of mercantile energy and wealth; and was regarded as the grand end and aim—the promised prize of American conquest. It is favourably situated for intercourse with the Upper Province, New York and Boston, being at the head of the ordinary navigation of the Atlantic, and at the foot of the grand chain of canals, which connect the great lakes Ontario, Erie, Huron and Superior with the river and the ocean. It is also connected by railroad and steam-boat with all parts of Canada and the United States.

Montreal is the port at which arrives the great bulk of the importations from Great Britain and other places abroad, being there either re-sold or transhipped to all parts of Canada East and West and the United States.

A large wholesale and manufacturing trade is carried on in Montreal in all descriptions of goods; the manufacture of boots and shoes particularly has risen to a great prominence, and many persons engaged in the business have rapidly acquired wealth. The amount of capital invested in all the works is over \$750,000, and the number of boots and shoes of all kinds manufactured, average upwards of 9,000,000 from each factory. This branch of trade gives constant employment to over 1,500 persons, many of whom, of course, are women and children.

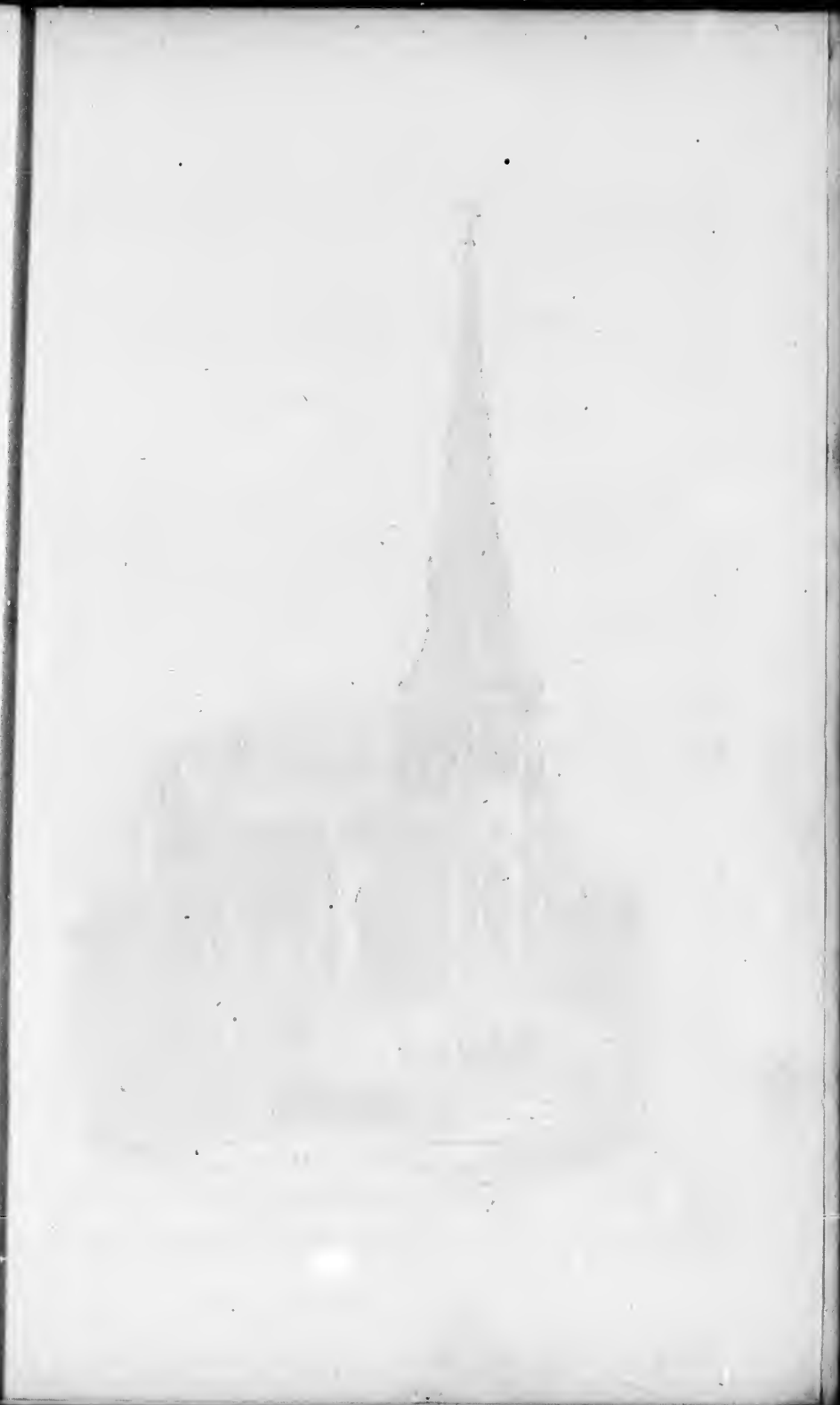
The city and suburbs are lighted with gas, and many of the principal streets paved with stone. From whichever side approached, Montreal and its vicinity (the wood clad "Mount Royal") forming a magnificent background, with its numerous beautiful villas, orchards, and delightful drives, its grand spires and lofty towers, present to the view of the beholder a vast, picturesque, and grand panorama.

Montreal has also magnificent water works, lately constructed, at an outlay of \$1,200,000.

importations
her re-sold or
United States.
in Montreal
shoes particu-
ngaged in the
de is in the
l invested in
l shoes of all
each factory.
500 persons,

he principal
l, Montreal
magnificent
d delightful
he beholder

cted, at an





ST. ANDREW'S CHURCH—See page 15.

Z
neat
perse
rear,
the
C. W.

B.
new
moda

St
Goth
be ca
moul
inter
upwa
railing
divid
the p
by-th
Math

C
plain
tower
west
filled
the m
750 p

No
The
some
to gi

PUBLIC BUILDINGS, SQUARES, &c.

ALEXANDER STREET (see St. Alexander).

BEAVER HALL HILL.

ZION CHURCH (*Congregational*). At the corner of Latour street. A neat building in the Doric style of architecture; is estimated to seat 1,250 persons comfortably. It has lately been much enlarged by an addition in rear, consisting of Vestry and Committee rooms, and accommodation for the "Congregational College," which has been removed from Kingston, C. W. Rev. Henry Wilkes, D.D., pastor.

BAPTIST CHURCH (FIRST). On the corner of Lagauchetiere street, a new and rather pleasing looking building, of a Gothic style; will accommodate about 750 persons. Rev. John Alexander, minister.

ST. ANDREW'S CHURCH (SCOTCH). Is a beautiful specimen of the Gothic style of architecture; is an ornament to the city, and is worthy to be called an ecclesiastical structure. The tower and spire are good, the mouldings are bold and well cut, and the windows in keeping. The interior is well arranged and handsomely fitted up, and will accommodate upwards of 1,000 persons. The church is enclosed on three sides with a railing of cast and wrought iron, on a cut stone plinth. The railing is divided into compartments by massive stone pillars, and, together with the plinth, is of a design corresponding in style with the church; which, by-the-by, is also used by the Scotch soldiers of the Garrison. Rev. A. Mathieson, D.D., pastor.

CHURCH OF THE MESSIAH (*Unitarian*). Opposite the above is a plain and substantial edifice, in the Byzantine style of architecture. The tower is about seventeen feet square, and about 120 feet high. Over the west end entrance is a large rose window, and in the chancel another, both filled with highly decorative stained glass. The church, which is under the ministry of the Rev. John Cordner, affords accommodation for over 750 persons.

BELMONT STREET.

NORMAL AND MODEL SCHOOLS, (*in connection with McGill College*.) The building in which the above named schools are held is a rather handsome pile in the Tudor style of architecture. This institution is intended to give a thorough training to teachers, which end is satisfactorily attained

by instruction and training in the Normal, and by practice in the Model Schools. Professor J. W. Dawson, LL.D., the well-known naturalist, is principal of this institution.

BERTHELET STREET.

THE LADIES' BENEVOLENT INSTITUTION, for the relief of widows and half-orphans, is a large unpretending three-story building. This Society, as its name infers, is managed solely by a committee of Ladies, and is one of the most useful in Canada.

BLEURY STREET.

ST. MARY'S COLLEGE (*Jesuit*). At the corner of Dorechester street, is a large and handsome stone building, with an extensive play-ground for the use of the scholars, in front.

JESUITS' CHURCH. This fine building, now (1865) approaching completion, is 230 feet long and 102 feet wide, with a transept 152 feet long. The roof is supported by double rows of columns, terminating with composite capitals. There are no galleries, with the exception of an organ gallery, which, at each side of the organ, will accommodate the students and pupils of the College. The height of the middle nave is 75 feet, and the width between the rows of columns is 40 feet. The height of the side naves is 34 feet. The rear wall of the chancel is octagonal, as are also the terminal walls of the transept. The chancel and transept are lighted by immense ornamental windows. There is accommodation for over 4,500 persons. The basement, unlike the generality of Roman Catholic churches consists of a large amphitheatre and forum, capable of seating 4,000 persons. The height is twenty feet above the forum, and 11 feet in front. The entrance to the church is by two large, handsome towers, which open on a vestibule 17 feet deep, and extending across the entire front of the church. These towers are about 200 feet high, and thirty feet square, and present a corner instead of a face to the street.

BONSECOURS STREET.

SOLDIERS' INSTITUTE, is a stone building on the corner of Champ de Mars street, and is an institution worthy of support, the intention being to draw the soldier from the tavern, and lower places of resort. It contains Reading Room, Library, and Billiard Room, besides conveniences for many other amusements.

CHENNEVILLE STREET.

JEWISH SYNAGOGUE, is a neat cut stone building, the interior of which is beautifully fitted up in the Egyptian style. Rev. A. De Sola, Rabbi.

COLLEGE STREET.

ASHES INSPECTION STORE, is a large brick building, extending nearly as far back as William street; all the inspection of Pots and Pearls for

ctice in the Mode,
nown naturalist, is

relief of widows
ilding. This So-
tee of Ladies, and

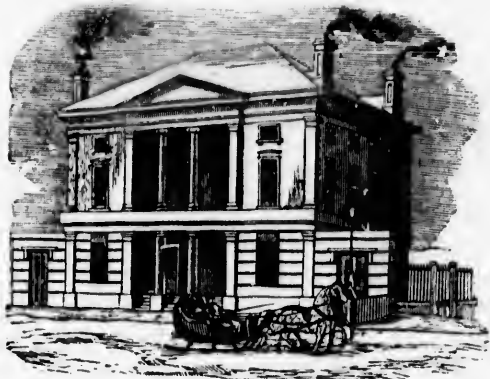
Dorchester street,
a play-ground for

approaching com-
pt 152 feet long.
ating with com-
on of an organ
te the students
e is 75 feet, and
height of the
tagonal, as are
nd transept are
ommodation for
of Roman Ca-
m, capable of
he forum, and
rge, handsome
ing across the
ect high, and
the street.

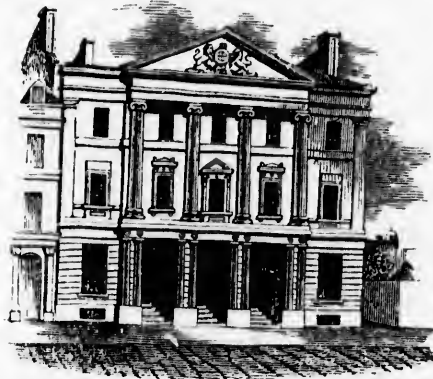
of Champ de
ation being to
It contains
veniences for

rior of which
ola, Rabbi.

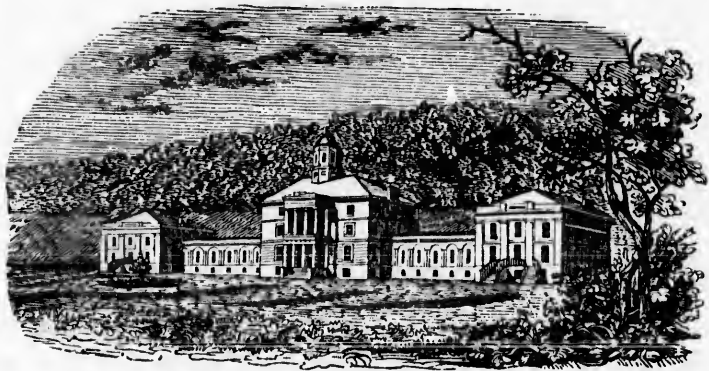
ling nearly
Pearls for



CITY BANK--See page 22.



BANK OF BRITISH NORTH AMERICA--See page 22.



McGILL COLLEGE--See page 20.

th
&

ou
ba

tr
m
w
H

a
&
sh
H

H
A
an
re
th
op

sic
be
me
T
fo
se
til
so
ing
a
In
ar
th

H
sta
to
ca

the city trade, which is pretty extensive, is done here by Messrs. Dyde & Major.

ROMAN CATHOLIC COLLEGE, a plain, substantial pile of buildings, well suited to the purpose originally intended, and now answers very well as a barrack for H. M. 60th Rifles, one of the finest regiments in the service.

COMMISSIONERS STREET.

ST. ANN'S MARKET, is a neat brick building, consisting of butchers', traders' and green-grocers' stalls, with a large hall above the butchers' market, used by Mr. Wm. Evans, as the Lower Canada Agricultural Hall; was built at a cost of about \$12,000, on the site of the old Government House; George Browne, Esq., architect.

COMMON STREET.

TIME BALL. Coming along the river side the stranger is attracted to a rather curious looking apparatus on the roof of Messrs. George Winks & Co.'s store. This turns out to be a time ball or indicator for the shipping public, a very useful improvement, erected by our energetic Harbour Commissioners at a cost of \$1,000.

CUSTOM HOUSE SQUARE, in the centre of which stands the "Custom House," a rather diminutive stone building for the metropolis of British America. In front of the building is a small enclosure filled with flowers and shrubs, and having a fountain in its midst. On the left is the Montreal House, a hotel frequented by Americans. In the adjoining block are the offices of the Trinity Board and the Harbour Commissioners; on the opposite side are some fine warehouses.

ROYAL INSURANCE BUILDING, at the juncture of this with Commissioners street, the palatial magnificence of which cannot fail to attract the beholder, is a fine building, and a credit to the city, being erected in a most sumptuous style, the elevations are a more or less elaborate design. The handsomest portion of the building is the tower, which contains a fine four faced clock, and is surmounted by a cupola, covered with zinc in fish-scale pattern. The court, the walls of which are lined with white Dutch tiles, a novel feature in this country, presents a very light, clear and handsome appearance, while the ornamental iron railing and columns surrounding the galleries, bronzed and painted a rich cobalt colour, give it altogether a cool and chaste character. The fitting of the offices of the "Royal Insurance Company," of carved oak throughout, and in keeping with the architecture of the building, are, without exception, the most handsome in the city. The building is divided by four fire-proof brick partitions.

MONTREAL OCEAN S. S. COMPANY'S OFFICE, belonging to the Messrs. H. & A. Allan, situated at the junction of this and Youville streets, is a substantial and ornamental cut stone building. At the wharf below is generally to be seen one or more of the Company's steamers loading or unloading their cargoes alongside the large freight sheds, erected for their accommodation.

COTTE STREET.

THEATRE ROYAL is outwardly a very plain building, but the interior is handsomely decorated and well fitted up to seat about 1750 persons. It has become, by good management, one of the institutions of our city, and is well patronized by the lovers of Shakespeare, Tom Taylor, Bourcicault, &c.

SCHOOL OF THE CHRISTIAN BROTHERS (*Friars*) is a large cut stone building, attended principally by French Canadian children, who pay but a nominal amount for tuition. The C. B. deserve great credit for their efforts to educate the young of their own religion, by opening schools in all parts of the city.

PRESBYTERIAN CHURCH OF CANADA (*Free*), is a neat and comfortably fitted up cut stone edifice. A high tin covered spire, and a flight of stone steps with iron railing in front add greatly to its appearance. Will accommodate about 1000 persons. Rev. D. H. McViear, pastor.

CRAIG STREET.

THIS street was formerly a rivulet or town ditch, but this stream has been converted into a tunnel, forming a large and useful main sewer, to carry off the waste water. It now forms one of the widest streets and greatest thoroughfares of the city.

CATTLE MARKET, is a large and well adapted brick building containing offices, weigh-house, and clerk's residence; J. J. Browne, Esq., architect.

FRENCH PROTESTANT CHURCH, on the corner of Elizabeth street, is in size 60 x 40, and is of rough stone, with cut stone dressings, in the early English style of architecture, with pointed windows and an octagonal canopied spire. There is a basement under, the entire length of the edifice, 10 feet high, well lighted and ventilated. The buildings in connection with and adjoining the church are a Bible Depository on the same street and the pastor's residence on St. Elizabeth street, both having cut stone fronts and pointed windows. Rev. R. P. Duclos, pastor.

CENTRAL HOSE STATION, a fine three story stone and brick building, at the corner of Chenneville street, was erected for the Corporation by Mr. H. M. Perrault in 1863. It has accommodation in the third story for the Chief Engineer. A Fireman's Hall on the second flat, and the lower flat has a stable, hose, bath, telegraph, and other apartments.

HAYMARKET SQUARE, a large open space at the corner of Radegonde street, at present used as a Hay-market. At the upper end is the weigh-house, and at the lower end near Craig street, a drinking fountain of rather unprepossessing appearance.

DALHOUSIE STREET.

ST. STEPHEN'S CHURCH, in the style of the 13th century, and similar in appearance to St. George's, yet with somewhat less pretensions. The interior is arranged in a neat, comfortable manner. The church is in

but the interior
750 persons. It
of our city, and is
Bouricault, &c.
large cut stone
men, who pay but
credit for their
ng schools in all

and comfortably
a flight of stone
. Will accom-

his stream has
main sewer,
widest streets

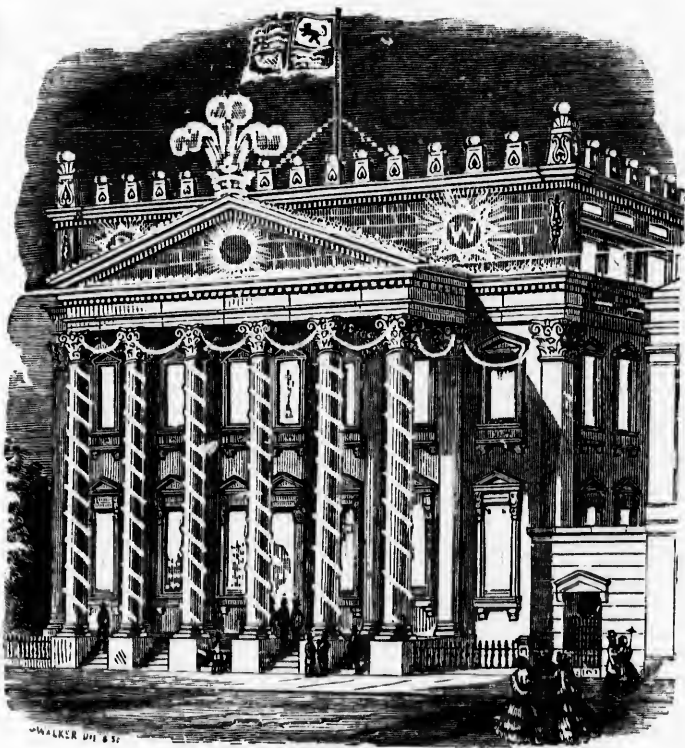
ing containing
sq., architect.

h street, is in
in the early
an octagonal
length of the
clings in con-
on the same
h having cut
r.

ck building,
poration by
ird story for
and the lower

Radegonde
the weigh-
in of rather

and similar
ons. The
urch is in



BANK OF MONTREAL.—See page 22.

1865

size
of t

S
stor
imm
800

M
pita
diou
and
elas
the

F
by t
of S
in th
wide
The
lectr

S
a sm
very
dow

P
sists
The
that
inter
shop
name
store
who
in th
60 fe
consi
kitch
stair
store
the th
room
provi
steam
appea

size about 100 by 55 feet, and will seat over 1,200 persons. A number of the sittings are free. Rev. Mr. Curran, minister.

DORCHESTER STREET.

ST. LUKE'S CHURCH (C. of E.) In the east of this street, is a neat stone edifice, well finished within and without. This church was erected immediately after the great fire of 1852. The building will seat about 800 persons, and is under the pastoral care of the Rev. John Irwin.

MONTREAL GENERAL HOSPITAL, better known as the "English Hospital," on the corner of St. Dominique street, is an elegant and commodious cut stone building. The management of the institution is admirable, and has been the means of conferring an immense amount of good on all classes. It is divided into wards, each for a specified ailment, and is under the direction of the best and most learned M.D.'s in the city.

FRENCH MISSION CHURCH, (Protestant) erected, as its name indicates, by the French Protestant Mission, is situated in this street, near the corner of St. Urbain, is built of brick with stone dressing and slate roof, and is in the Gothic style of architecture. The church is 53 feet long by 30 wide. The pews are open, and afford accommodation for nearly 300. There is a commodious, well-lighted basement, adapted for either school or lecture room.

ST. JOHN THE EVANGELIST (C. of E.), at the corner of St. Urbain, a small brick building, with something of the Gothic style about it; is very neatly fitted up in the interior; a very handsome stained glass window is the principal attraction. Rev. Edmund Wood, M.A., curate.

PROTESTANT HOUSE OF INDUSTRY AND REFUGE. This institution consists of two large, substantial looking brick buildings, near Bleury street. The building in front is 3 stories high, and measures 60 by 50 feet, forming that portion of the institution where the various offices, board room, superintendent's dwelling, &c., are situated. On the ground floor are two shops, a spacious entrance hall and staircase, giving access to the above named rooms, which are on the second storey; above them in the third storey are dormitories for the more respectable portion of the community who may require temporary shelter, and who would not like to be placed in the "House of Refuge" proper, which latter is in the rear building, 60 feet by 40, connected with the front one by a covered corridor, and consists of, on the ground floor, a spacious kitchen, with large cooking kitchen attached,—superintendent's office, separate reception rooms, and staircases for the male and female applicants, closets, &c. On the second storey are the women's dormitories, with water closets, &c., attached; while the third story contains similar accommodation for men. Laundry, drying room; bath rooms for both males and females; fuel cellars, &c., are all provided in the basement. The whole building is thoroughly heated by steam. The rooms are large, lofty, and well ventilated, and great care appears to have been taken to obtain that great desideratum in an institu-

tion of this kind, viz: to keep the two sexes totally separated, and at the same time to be so near the superintendent's apartments, as to be at all times under his immediate supervision.

HIGH SCHOOL, a fine brick building in the Grecian style: is in connection with McGill College, and is noted throughout the Province as a first-class educational institution.

ST. JAMES' CLUB HOUSE, on the corner of University street, one of the finest buildings in British North America. The exterior is in keeping with the purpose for which it is intended, the principal façades being on Dorchester and University streets. The base, to a height of seven feet above the foot walk, is executed in Montreal limestone, rough-faced ashlar, with dressed mouldings and angles. The superstructure is in red brick, with Ohio stone cornices, window dressings, &c.; the entrance, bay windows and balconies being built entirely of the latter material. The whole building is surmounted by a massive medallion cornice, from which rises the curved Mansard roof, covered with metal. An ornamental cast iron cresting railing surrounds the flat portions of the roof, from which place extensive views of the mountain and city can be obtained. The building, which is fitted up with every modern comfort and convenience, is heated throughout with steam.

WESLEYAN CHURCH is a fine building of the English Gothic style of architecture of the 13th century. The walls are stone throughout, the plain surface being natural faced work in small regular curves, and the angles and wreathings of buttresses, and the windows, and door jams are of cut stone. The height of tower and spire is 170 feet. The basement is lofty and wholly above ground, and is divided into class and lecture rooms, lobbies, &c. The building is 61 feet by 93 feet clear, inside, and will accommodate about 800 persons. There are no galleries.

KNOX CHURCH. This building, now (1865) in course of erection, at the corner of this and Mansfield street, is for the congregation now worshipping in the old church in St. Gabriel street. It is to be in the early Gothic decorated style of architecture, the ashlar work of the walls, buttresses, &c., will be built with small even courses of stone, having their natural face exposed; the dressing of the windows and doors, the moulded work, &c., being chiselled. It is 110 feet in length, by 60 feet in breadth, and consists internally of a nave and two side aisles, in the latter of which are galleries. The nave, arches, and roof are supported by light iron columns, which also support the galleries. The ceiling will be plastered, and divided into panels by the roof timbers. There is an octagonal recess for the pulpit, over which there will be a ground ceiling. The windows will be filled with glass of a diaper pattern, with a stained margin around the different compartments; over the east gallery there will be a large rose window filled with rich tracery. Great attention has been given to the heating and ventilation, which will be carried out under the most approved system. The pews are arranged on a circular plan, and are calculated to

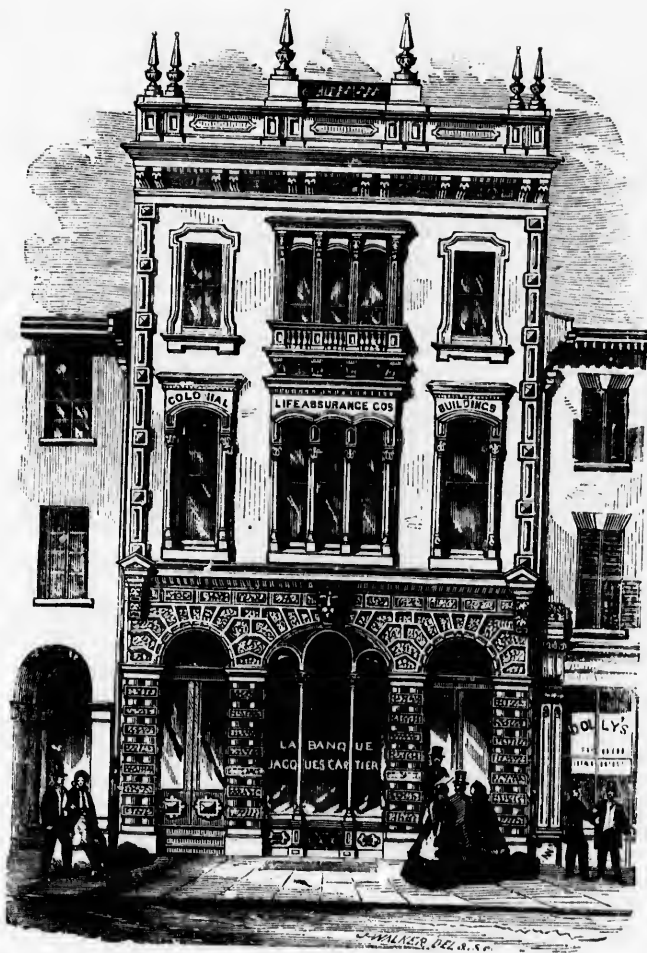
ated, and at the
as to be at all

style: is in con-
e Province as a

y street, one of
or is in keeping
acades being on
of seven feet
e, rough-faced
ecture is in red
the entrance,
material. The
e, from which
namental cast
f, from which
btained. The
convenience, is

Gothic style of
throughout, the
urves, and the
door jams are
The basement
s and lecture
clear, inside,
leries.

f erection, at
ion now wor-
e in the early
he walls, but-
having their
the moulded
t in breadth,
tter of which
y light iron
e plastered,
gonal recess
he windows
argin around
a large rose
iven to the
st approved
alculated to



COLONIAL LIFE ASSURANCE COMPANY'S BUILDING—See page 12.

1865

acc
Ch
por
lib

ex
an
cu
an
TH
the
20
hig
ler
Su
ea
wi
ou
lec
ple

ma
ma
an
ere
Pa
dir

an
25
dr
wh
pr
TH
sp
ne
me
mu
nu
for

accommodate nearly 800 persons. There are three entrances to the Church, the principal one on this street, being through a handsome open porch. There is a lofty and spacious basement, in which are a vestry, library, class-rooms, &c., &c.

ERSKINE CHURCH (*American Presbyterian*). This building will be an exact copy of Park Church in Brooklyn, N.Y., and have a massive appearance, yet without any great pretensions to architectural beauty, no particular style being applied in the design. Its length over all is to be 144 feet and the width 86 feet. The ceiling, a flat one, will be 44 feet from the floor. The front elevation on Dorchester street has two towers, one at each angle, the one next Drummond street finished with a spire rising to a height of 200 feet above the street, the other being finished square at about 80 feet high. The auditorium is 90 feet long by 76 feet wide, and, with the galleries, will seat 1,200 persons. There is no basement, hence the lecture and Sunday-school rooms, will be in the rear portion of the building, and be each about 90 feet long by 30 feet wide. All the pews on the ground floor will have a curved form, so that the minister can everywhere be seen without the listener sitting in an uneasy posture. It is expected that the lecture-room will be occupied next winter, and the whole building be completed about the following June. The cost is estimated at about \$53,000.

MONT STE. MARIE (*Nuns' School*), is a fine stone building in a commanding situation. From the top of a flight of stone steps leading to the main entrance, a fine view of the Victoria Bridge, with part of the city and surrounding country, may be had. The building was originally erected for a Baptist college, but has more recently been used as the St. Patrick's hospital, and is now used as a ladies' boarding school under the direction of the Congregational Nuns.

DRUMMOND STREET.

VICTORIA SKATING RINK, a neat brick building, with stone dressings, and roof of galvanized iron, having a frontage of 100 feet, and a depth of 250 feet, consisting of a large entrance hall, on each side of which there are dressing, hat, and cloak rooms. These rooms communicate with the rink, which covers an area of 16,160 superficial feet, and is surrounded by a promenade 10 feet wide, with a raised recess on one side for the land. The ice is spanned by a semi-circular arch-like roof, 50 feet high, which, springing from the ground, is so constructed as to give an apparent lightness of effect, combined with great strength, the surrounding walls being merely a casing as it were for the space. The building, which bears very much the appearance of an English railway station, is lighted at night by numerous gas jets, and is resorted to by the youth and beauty of our city, for whose use every convenience seems to have been taken into account.

FOUNDLING STREET.

GREY NUNNERY, or "General Hospital of Charitable Sisters," was

founded in 1692, and after many vicissitudes became a flourishing institution. It is at present one of the most extensive charities, being a founding hospital, as well as a refuge for the infirm. The premises are surrounded by a wall, which extends as far back as Youville street, so called in memory of one of the foundresses of the hospital.

GREAT ST. JAMES STREET.

Which may be called the Bond street or Broadway of Montreal, the spacious breadth and numerous fine buildings of which entitle it to the first rank among our city thoroughfares. It is perhaps seen to more advantage from the corner of McGill street, whence the fore-shortened line of uniform and lofty stone buildings, terminating in the perspective of the portico of the Bank of Montreal, and the more ornate erections in its vicinity, have a very fine effect. The buildings most worthy of note are the:—

CITY BANK, a handsome cut stone building, in the Grecian style of architecture.

BANK OF MONTREAL, opposite the Place d'Armes, an elegant cut stone edifice, with six massive ornamental columns; is one of the finest examples of Corinthian architecture to be found on the continent of America.

LIVERPOOL AND LONDON INSURANCE Co.'s BUILDING, is an elaborate pile of stone, containing the offices of the Company, and the City and District Savings Bank.

LA BANQUE DU PEUPLE, is a rather good looking cut stone building, on the corner of St. Francois Xavier street.

POST OFFICE, a handsome building, and in the very heart of the (business) city. The dimensions are a front of fifty-four feet on Great St. James street, and one hundred feet on St. Francois Xavier street, with a height of fifty-seven feet. It is designed in the Italian style, and forms one of the great architectural ornaments of Montreal. It has three stories and an attic, all of which are heated in winter by an hot-air apparatus placed in the basement. The great hall is seventy feet long, fifty feet wide, and sixteen feet high, with a fine pannelled ceiling, supported by six hollow iron pillars, which are used for conveying the heated air to the upper stories.

ST. LAWRENCE HALL, (Hotel), a fine cut stone building, well finished, without as well as within. This well-known house is regarded as the most popular and fashionable hotel in the Province, and has been under the charge of its present proprietor for upwards of ten years. The building has over 325 apartments, a large number of which were occupied by the suite of H. R. H. the Prince of Wales on the occasion of his visit in 1860.

BANK OF BRITISH NORTH AMERICA, is a fine cut stone building, in the composite style of architecture.

urishing institu-
ing a foundling
are surrounded
et, so called in

ntreal, the spa-
it to the first
more advantage
d line of uni-
pective of the
rections in its
y of note are

ecian style of

n elegant cut
of the finest
ment of Ame-

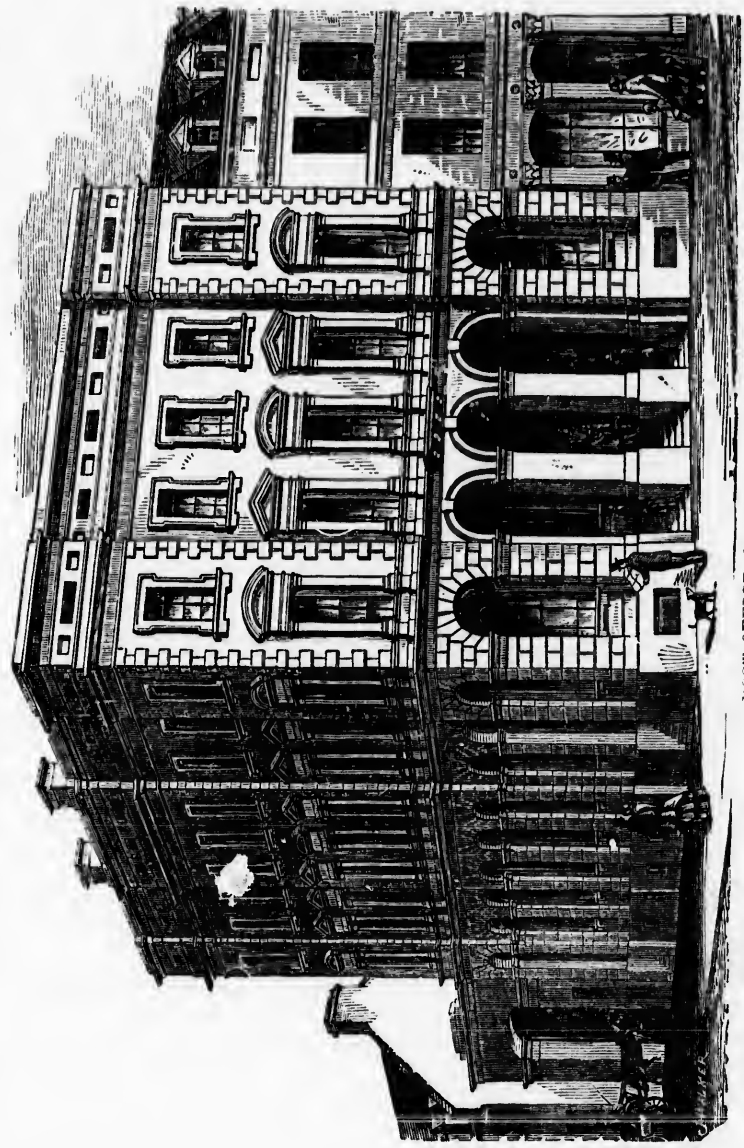
an elaborate
he City and

one building,

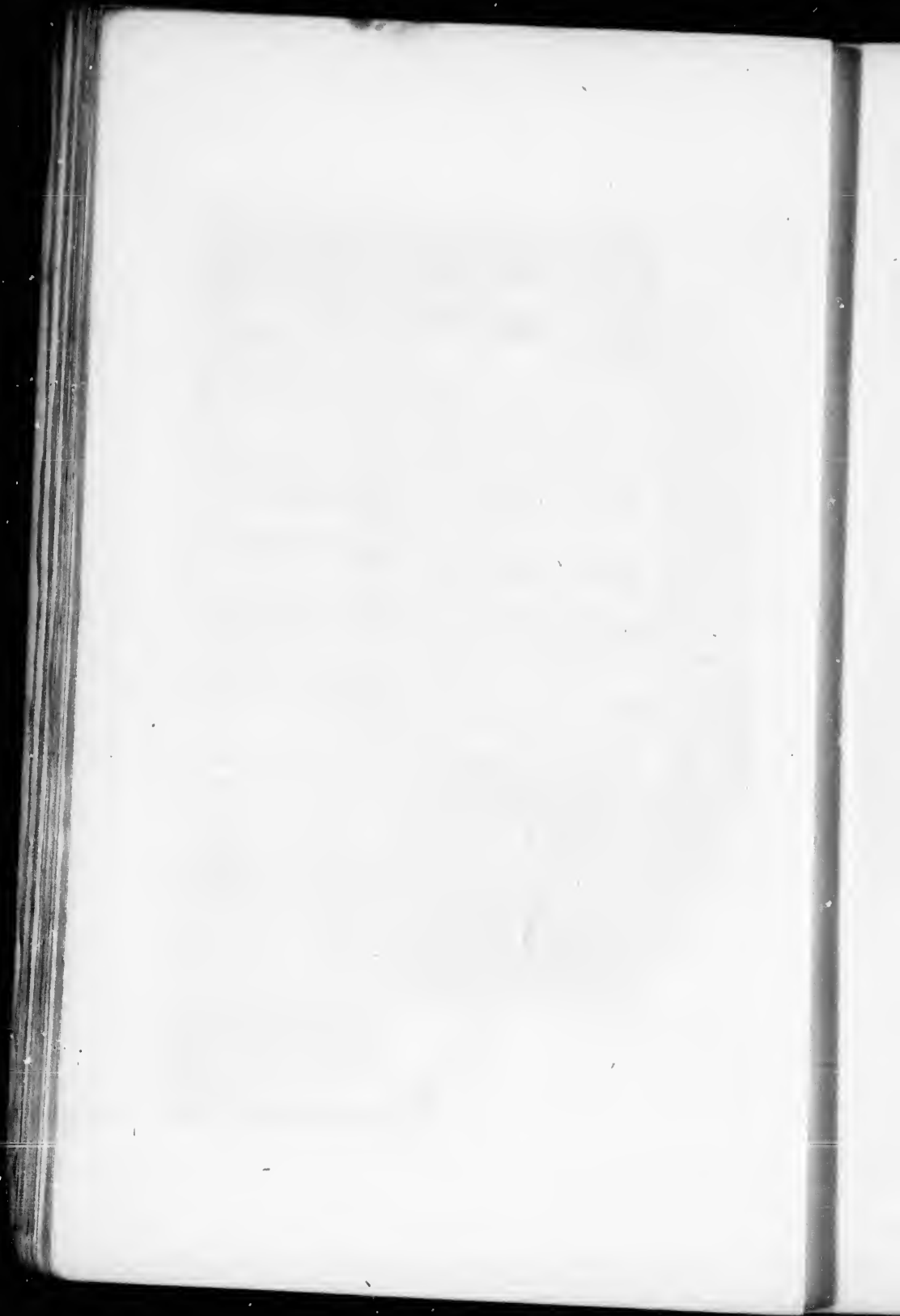
heart of the
on Great St.
reet, with a
e, and forms
three stories
r apparatus
g, fifty feet
orted by six
air to the

ell finished,
as the most
under the
e building
oied by the
is visit in

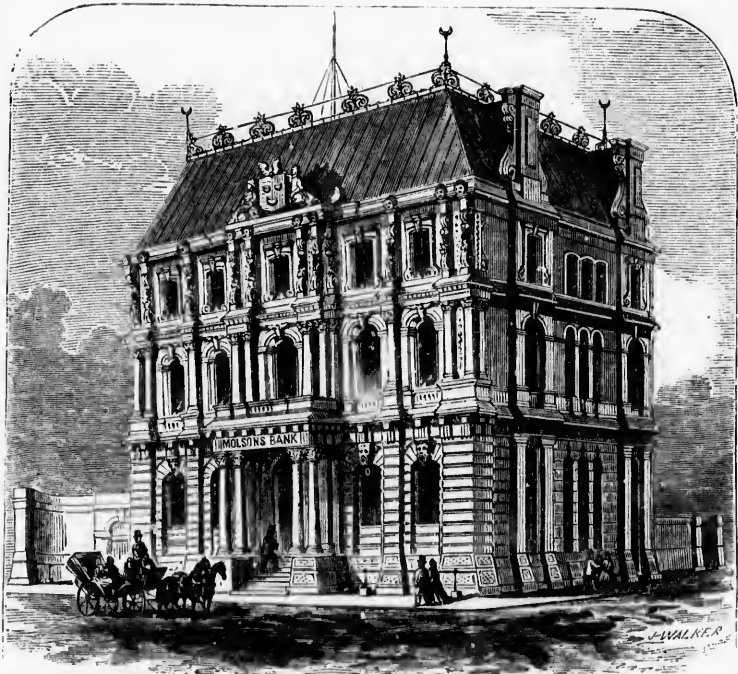
uilding, in



POST OFFICE—See page 22.







MOLSONS BANK—See page 23.

1865

C
pile
pany

P
has
mak
pied
hous
"M
moor

W
arch
seat
and
the
the

M
notic

M
expe
whos
has
the
thian
Jam

has a
the g
facad
street
whic
panie
asmu
lava

street
tectu
comp
to un
bold
the p
exte
of th
verm
eithe
line,
regu

COLONIAL LIFE ASSURANCE COMPANY'S BUILDING, is a striking pile of handsomely finished cut stone buildings, occupied by the Company's offices, and the ground floor by the Banque Jacques Cartier.

PRINTING HOUSE, one of the oldest buildings in the street, but which has lately had a new shop front put in, and been otherwise renovated, making it one of the handsomest stores in the street. The shop is occupied by Mr. Alex. McGibbon, grocer, and is called the "Italian Warehouse"; the other part of the building is occupied as the office of the "Montreal Gazette" and "Evening Telegraph" newspapers, and M. Longmoore & Co., Book and Job Printers.

WESLEYAN CHURCH is an elegant edifice in the florid Gothic style of architecture of the 14th century. Its size is 111 by 73 feet, and it will seat about 2300 with comfort. The arrangement of the interior is unique and beautiful; the pulpit especially calls for notice, it is a fine specimen of the carved Gothic style. This church contains one of the finest organs in the city, the supply of wind for which is worked up by water power.

MOLSONS BANK (*old*), an old plastered building hardly worthy of notice when looked at by the side of its neighbour the new bank.

MOLSONS BANK (*new*). This building was carried out under the able and experienced supervision of George and John Jas. Browne, Esqs., Architects, whose design was unanimously adopted after a competition. The structure has three frontages or facades, faced with Ohio sandstone. The shafts of the Doric columns of the portico (ground floor,) and those of the Corinthian columns forming the centre of the second storey on the Great St. James street front, are of polished Peterhead granite, the red tint of which has a fine effect. The principal entrance to the bank is in the centre of the ground floor of this front, and the private entrance in the east or court facade, entered from the same street. The third front, in St. Peter street, has a separate and independent entrance to commodious chambers which occupy the first and second floors, and are to be leased to public companies as offices, and will, it is expected, prove largely remunerative, inasmuch as they are thoroughly heated and ventilated, and fitted with lavatories, water closets, dust holes and bin, porter's room, &c. The street facades possess, not only from their extent, but from their architectural treatment, a bold and imposing character, and display in their composition, appropriateness and simplicity, the general forms conducive to unity and expression of purpose. They are also remarkable for the boldness of their projections, and interesting as showing the tendency at the present moment to the use of a much larger amount of carving for external decoration than has hitherto been employed. The substructure of the principal facade on Great St. James street is a stylobate of massive vermiculated rustie, from which rise broad pilasters or rusticated piers on either side of the central projection or portico which extends to the street line, the whole including one tier of openings, and surmounted with a regular Doric entablature. Of the five compartments into which the



ground floor of this facade is divided, the central one is somewhat wider than the rest, and displays a handsome entrance doorway of large proportions and deeply recessed, approached by a flight of steps externally. The windows have semicircular heads, radiating rustics, moulded jambs, carved imposts, and masks on the key stones. The doors are constructed of plate iron with oak framings, cast iron mouldings, with ornaments and medallions bolted thereon, and finished to imitate bronze. The sashes to the ground floor throughout are of Spanish mahogany, varnished and polished, and glazed with single sheets of plate glass. The shutters are of plate iron, in two parts, balanced, and adjusted so that when the upper half ascends the lower one descends into grooves constructed in the wall to receive them, and *vice versa*, when the upper part descends the lower one ascends, and both meet in a groove in the centre of the height of each window, where they become locked. An entablature marking the separation of the second storey from the third or attic storey, and projecting forward in the centre of the building over the four Corinthian columns, is enriched with modillions and dentils to correspond in richness and effect with the capitals of the columns. The upper part of the building is terminated with an attic cornice, breaking forward with the centre of the building, which corresponds in width with the portico on the ground floor. Thus the effect of a centre, indicated by the projecting portico on the ground floor, is maintained throughout the whole height of the building, and, being surmounted with a sculptured group, forms the most prominent feature in the composition. Another noticeable feature in this building is the stacks of chimneys carried up above the attic cornice. These are executed in rubbed sandstone, and are of an ornamental character, showing that they have been the subject of thought, and that the designing of them has not been neglected by the architects, as is too often the case in modern buildings.

COMMERCIAL BANK, on the corner of St. Peter, is a plain cut stone building, in the Grecian Doric style.

MECHANICS' INSTITUTE. This handsome structure at the corner of St. Peter Street, has a frontage of 64 feet on Great St. James, by 100 feet on St. Peter Street. It is designed in the Italian style, and forms one of the architectural ornaments of Montreal. The ground floor contains two large and handsome shops, the next contains a corridor, reading room, library, presidents, committee and class rooms. From the corridor on this flat three staircases lead to the third story, which forms a very handsome concert or lecture hall, which is tastefully fitted up, has a good sized platform at one end, and is well lighted by gas and can seat over 1000 persons.

NORDHEIMERS' MUSIC HALL, a large and very handsome hall, decorated in *al fresco* painting. The manager caters for the public amusement with concerts, balls, panoramas, or lectures almost every night. The ground floor is occupied as stores, and part of the second storey was until lately occupied by the members of the "Mercantile Library Association"

somewhat wider
ay of large pro-
teps externally.
moulded jambs,
are constructed
ornaments and

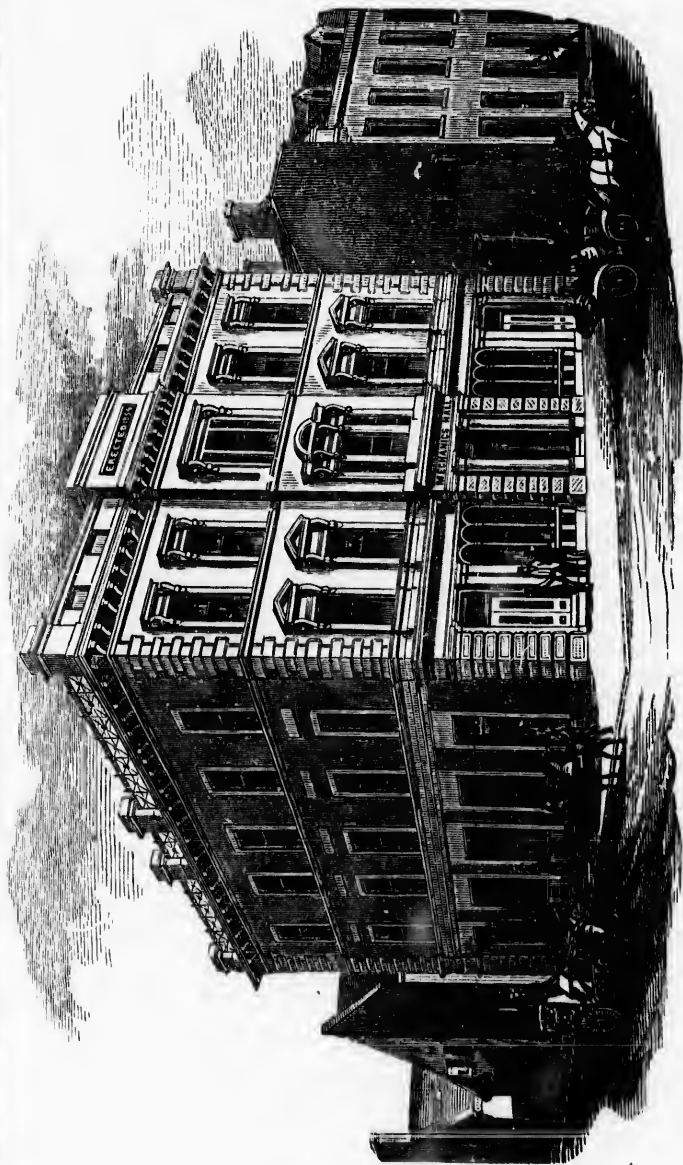
The sashes to
varnished and
The shutters are
when the upper
d in the wall to
s the lower one
height of each
ing the separa-
and projecting
iaz columns, is
ness and effect
building is ter-
e centre of the
ne ground floor.
portico on the
f the building,
most prominent
this building is

These are ex-
racter, showing
signing of them
n the case in

plain cut stone

the corner of St.
by 100 feet on
nd forms one
floor contains
reading room,
corridor on this
very handsome
a good sized
eat over 1000

me hall, deco-
public amuse-
y night. The
orey was until
y Association"



MECHANICS' INSTITUTE.—See page 24.

as a
small
private

C
the I
interi
&c.
of par
glass

O
tiguor
enjoy
archi

V
being
beds
tainin

B
above
the a
side,
making
80 fe
roof,
count
buildi
at lan
time.
third
seats
Mech

N
doors
E. G

W
street
and is

C
near S
round
aspect

as a reading room, but is now used as a Commercial College. There is a small hall on the third flat usually used as a dancing school or hired to private dancing parties.

CENTRAL DRUG HALL is one of the finest shops of the kind in the Province; the exterior presents an imposing appearance, and the interior is very handsomely fitted up, resplendent with plate-glass, mirrors, &c. There is a very fine ottoman in the centre of the shop, for the use of parties who wish to refresh themselves in the summer months with a glass of Davidson's well-known soda water.

OTTAWA HOTEL, a fine stone building close to McGill street, and contiguous to all the public resorts, is one of the oldest hotels in Canada, enjoys a good reputation, and, we believe, deservedly. G. Browne, Esq., architect.

VICTORIA SQUARE, at the foot of this street is a very fine enclosure, being well fenced in and planted with flowers and shrubs, the walks and beds being in excellent order; in the centre is a large stone basin containing several jets of water.

BONAVENTURE BUILDING, is situated at the south-east side of the above square, and being a peculiar combination of brick and stone, arrests the attention of most persons. It has a frontage of 50 feet on the west side, 90 feet on the south-east, and 60 feet on St. Bonaventure street, making a total frontage of 210 feet, with nine different entrances. It is 80 feet high, consisting of five stories, having an iron railing around the roof, from which a magnificent view of the whole city and surrounding country is presented. There is a large clock in the main front of the building, the public benefit of which is duly appreciated by the community at large, its hands *very conveniently* almost always pointing to the same time. The first storey is occupied as stores, the second as offices, the third and fourth stories form a very good hall for concerts, &c., and seats over 700 persons; the fifth storey is used as meeting rooms for Mechanics' Unions, masonic, temperance, and other meetings.

HANOVER STREET.

NEW JERUSALEM CHURCH, a small brick building the windows and doors faced with cut stone; the basement is divided into two stores. Rev. E. Gould, pastor.

LAGAUCHETIERE STREET.

WESLEYAN CHURCH. A large stone building on the corner of Durham street. This is the furthest east of the Wesleyan churches in the city, and is well attended.

COLLEGE OF PHYSICIANS AND SURGEONS, (*French*), situated in this near St. Charles Borromée street, is a very unprepossessing building, surrounded by a common board fence. But albeit it has an unfavorable aspect, it has turned out some clever men from its halls

UNITED PRESBYTERIAN CHURCH, on the corner of Chenneville street, is a very plain looking edifice, the congregation of which profess to hold the distinctive principles of the body whose name it bears. The church was founded in 1833, but was rebuilt and enlarged in 1847. Rev. Wm. Taylor, D.D., pastor, and Rev. J. M. Gibson, asst. The congregation of this church are now erecting a larger and much finer edifice in St. Catherine street, to be called the Erskine Church.

ST. PATRICK'S CHURCH, (*R. C.*) stands on an elevated site at the corner of St. Alexander street, and is one of the most striking objects visible on approaching the city. This large and commanding building is in the Gothic style of architecture. The length is 240 feet, by 90 feet in breadth; the spire is 225 feet high. The interior is comfortably and handsomely fitted up, with room for over 5,000 worshippers. Taken altogether, this is a splendid model of ecclesiastical architecture.

MCCORD STREET.

ST. ANN'S CHAPEL, at the junction with Basin street, is a handsome stone building in the Gothic style of architecture, and will seat about 1500 persons.

M'GILL STREET.

This will eventually be one of the finest thoroughfares in the city, on account of its great breadth and fine prospects at either extremity; having the Victoria Square and a distant glimpse of the mountain at one end, and a fine view of the river and the Victoria Bridge at the other. This street was formerly the boundary of the city proper; on the west and beyond lie Griffintown and the St. Antoine Suburb. There are a number of very fine stores, but no public building of any note in this street.

SAILORS' HOME, in Young's building, corner of William street, is one of the most useful institutions in the city, affording shelter to the distressed mariner and a place of resort for the sailors of the port. It contains a good library and reading room, together with a number of amusements, all of which tend to keep the "tar" out of evil places, and many from evil companions.

NOTRE DAME STREET.

This being one of the oldest streets in town, its aspect is exceedingly miscellaneous, containing buildings of every date. Here and there is a low tenement with dormer windows, reminding us of the earliest days of Montreal, while perhaps its immediate neighbour, a lofty stone block, at once restores our associations to modern times.

DALHOUSIE SQUARE, at the head of this street, is occupied on the left as a cab stand, while on the right are a number of cut stone dwelling houses now occupied as officers' quarters by the Royal Artillery and Engineers. The enclosure in front is very neatly fitted out with flowers, shrubs, &c., and a fountain in the centre.

...enneville street,
... profess to hold
...s. The church
...47. Rev. Wm.
...he congregation
...er edifice in St.

...tod site at the
...striking objects
...ding building is
...et, by 90 feet in
...comfortably and
...ppers. Taken
...ecture.

... is a handsome
...seat about 1500

... in the city, on
...remity; having
...in at one end,
...e other. This
...e west and be-
...e are a number
...is street.

...n street, is one
...o the distressed
...It contains a
...musements, all
...many from evil

...ceedingly mis-
...there is a low
...days of Mon-
...block, at once

...ied on the left
...stone dwelling
...Artillery and
...with flowers,



ST. PATRICK'S CHURCH—See page 21.

Do
as on
corner
Hous
either
eveni

Go
belon
seeds
cultiv

JA
garden
is wel
Lower
as the

JA
street
Helen
Dame

NE
invari
inter
which
colum
corpor
in the
of, ha
honou
more
water
not do

CH
of 500
street,
rear o
ground
specta
troop
ments
the pr
(with
lamps
each a

Co
in the

DONEGANA HOTEL, is a large, handsome looking building, and is known as one of the first-class Canada hotels. Is frequented principally by Southerners. Is in one of the best situations in the city, and has the Mess Houses of one of H. M.'s Regiments on each side of it; the bands of either of which regiments play in the inclosure in front of the Mess several evenings during the week.

GOVERNMENT GARDEN, is a handsomely decorated plot of ground belonging to Government, and leased by them to one of our principal seedsmen, Mr. George Shepherd, who seems to pay great attention to its cultivation.

JACQUES CARTIER NORMAL SCHOOL is a large building opposite the garden above mentioned. It is under the direction of R. C. priests, and is well conducted. The offices of the Superintendent of Education for Lower Canada are in the same building, which, by-the-bye, was once used as the Government House by the French governors.

JACQUES CARTIER SQUARE is a large open space extending from this street to the river. A magnificent view of the Victoria Bridge and St. Helen's Island is to be had from this square, which rises towards Notre Dame street with a considerable incline.

NELSON'S MONUMENT, situated at the head of the above square, is invariably visited by all strangers, and never fails to excite the deepest interest; on the pedestal were representations of three of the battles in which this gallant hero fought. We cannot refrain from saying that this column is a disgrace to the city. Through the culpable negligence of the corporation, the citizens, or both combined, the only public monument in the city, the only memorial to Great Britain's heroes which we can boast of, has been allowed to go to rack and ruin; this which should be an honour to our city is a standing disgrace. And, as if to make this disgrace more palpable, Nelson's *back* is turned towards his natural element—the water. We regret to say that, in this matter, Englishmen have certainly *not* done their duty.

CHAMP DE MARS, or Military Parade Ground, is a fine gravelled space of 500 yards in length by 100 broad, and is bounded on one side by Craig street, and on the other by the Court House, the raised embankment in rear of which is well boarded, and a flight of steps leading to the parade ground and extending its entire length furnishes a first rate *stand* for spectators. The troops in garrison parade here almost every morning, and troop colours twice a week during summer; the bands of the several regiments beat tattoo in the evenings, all of which combined make it one of the principal resorts for stranger as well as citizen. The Corporation have (with the consent of the military authorities,) erected twenty-four gas lamps for the use of our volunteer force, who, owing to being engaged, each at his legitimate trade, cannot turn out during the day.

COURT HOUSE. This is a large and stately pile of cut stone buildings, in the Grecian Ionic style. The ground plan is 300 by 125 feet, and the

height is 76 feet. The order of architecture followed was that of the temple of Illius, which is one of the finest specimens of Grecian art. The building contains large fire-proof vaults, fine Court rooms for the Appeal, Circuit, Superior, Criminal, and Police Courts, and it also contains the offices of the Sheriff and Prothonotary, the Advocates' Room and Library, together with the different offices in connection with the several Courts. The whole building is heated with hot air, lighted with gas, and supplied with water and all other conveniences. At the end of the Court House, and in the small square leading to the Champ de Mars, is a small fountain, furnished with drinking cups.

BLACK NUNNERY, to reach which you must pass under an arch directly facing St. Lambert street. This is an educational establishment for French Canadian girls, in which all the branches of a general education, needle-work, music, embroidery, &c., are taught, all being under the direction of the Black Nuns. A large and handsome church has lately been erected on the grounds of the Nunnery.

PLACE D'ARMES, or French Square, is occupied in the centre by a pleasant enclosure, surrounded by a handsome iron railing, with gates at each corner surmounted by stones bearing the city arms. The garden is laid out with shrubs and flower beds, having a rather pretty fountain in the midst, around which are placed seats constituting a pleasant lounge.

ONTARIO BANK. This building, on the west side of Place d'Armes, is in the pure Italian style of architecture, chaste and simple in its features, yet producing a handsome façade. Is four stories high, and built of Montreal stone. The frontage of the building is fifty feet, and the depth seventy feet. Height over sixty-two feet, forming as a whole one of the finest buildings in the city.

FRENCH CATHEDRAL, (*R. C. parish church*), whose twin Gothic towers seen from afar off, bear no inconsiderable resemblance to that "Notre Dame" on the banks of the Seine. The corner stone of this edifice, which is built in the perpendicular Gothic style of the middle ages, was laid on the 3rd September 1824, and was opened for Public Worship in July, 1829. It was originally intended to make it much larger than it is at present, in fact to extend it down to St. Paul street, and to build it in the shape of a Maltese Cross, thus to make it a *Cathedral* for all Lower Canada; but, for many reasons, the plan had to be resigned in favor of the present building, the length of which is 255 feet 6 inches, and its breadth 144 feet 6 inches. The height of the towers is 220 feet. The great window at the high altar, which is filled with beautifully stained glass, is 64 feet high and 32 feet wide. The church is capable of accommodating over seven thousand persons. In the north-east tower is a fine chime of bells, and in the north-west tower is placed the largest bell in America, cast expressly for this church, and weighing 29,400 lbs; its sound is very remarkable. This tower is open to the public for a small fee; from the top a splendid view of the River St. Lawrence, the island

as that of the
recian art. The
for the Appeal,
so contains the
m and Library,
several Courts.
as, and supplied
e Court House,
small fountain,

an arch directly
ment for French
ucation, needle-
the direction of
ely been erected

he centre by a
with gates at
The garden is
etty fountain in
asant lounge.

Place d'Armes,
imple in its fea-
high, and built
y feet, and the
s a whole one of

he twin Gothic
mblance to that
one of this edi-
e middle ages,
Public Worship
h larger than it
and to build it
l for all Lower
ed in favor of
inches, and its
220 feet. The
utifully stained
pable of accom-
tower is a fine
e largest bell in
29,400 lbs; its
lic for a small
euce, the island



FRENCH CHURCH—See page 28.

of Mo
countr

SEM
one of
the fr

RE
old Pa
with i
around
centu
nately
It wi

W
which

NR
well
rece
capal
the c

W
mate
Ohio
ings,
whic
by s
cover
varn
arch

S
teri

V
thou
shee
or r
bui
Pro

I
she

of Montreal, St. Helen's island, Victoria Bridge and the surrounding country, is presented.

SEMINARY OF ST. SULPICE, in connection with the Parish Church, is one of the most ancient buildings in the city. There is a public clock in the front of the building, equally celebrated for its antiquity.

RECOLLET CHURCH, (R. C.) which was built out of the materials of the *old* Parish Church, was built in 1725. It has an ancient, quaint appearance, with its portico, and its high stone wall closing it in from the busy world around. When church accommodation was very limited, nearly a century ago, divine service was held in this building on Sundays alternately by the various denominations of Christian residents in Montreal. It will seat over 1500 persons.

OTTAWA STREET.

WESLEYAN METHODIST CHURCH is a neat stone building, services in which are, for this part of the city, well attended.

NEW CITY GAS COMPANY'S WORKS, corner of this and Ann street, is well worthy a visit, the works being very extensive. The Company have recently erected a new meter-house, in which has been placed a new meter capable of measuring many million feet of gas. It was manufactured at the celebrated works of Thos. Glover, manufacturer, of London, England.

POINT ST. CHARLES.

WESLEYAN CHURCH.—The style adopted is early English, and the materials used in the superstructure are red, white, and black bricks, with Ohio rubbed sandstone, water tables, string courses, and dressings to openings, with tessalated tile sands. A central doorway leads to the main hall, which communicates with the school-room and with the body of the church, by steps ascending right and left. The tower is surmounted with a spire covered with tin. The roof is framed with open timbers, stained and varnished. Designed and superintended by John James Browne, Esq., architect.

ST MATTHEW'S CHURCH is a neat brick building, used by the Presbyterians in connection with the Church of Scotland.

RADEGONDE STREET.

VICTORIA ALMOURY, at the head of the Haymarket, is a convenient though rather small brick building, fitted up for the Volunteers as a drill shed; a number of rifle racks are ranged around the walls with the name or number of the company to which they belong marked on each. The building is very much frequented, and contains the dwelling of the Provincial Storekeeper, as well as a small gallery for spectators.

SHERBROOKE STREET.

BON PASTEUR NUNNERY, a large stone building, devoted to the care and shelter of the aged and infirm of the R. C. persuasion. This institution,

like most all others of the same class in the city, has a chapel attached to it.

WESLEYAN CHURCH, at the corner of St. Charles Borromée street, is a handsome edifice in the English Gothic style, with a tower and spire rising from the front to the height of 120 feet. The roof is covered with different colored slates. The interior has an arched roof, grained oak. There are no galleries except at the end. The pews are curved, which adds much to their beauty, and is a great convenience, since by it the congregation in every part face the preacher. Behind the pulpit there is an organ gallery, in a recess, with a neat pointed arch and columns in front, and underneath this gallery is the vestry. The Church has three entrances in front and one in the rear, and a lofty basement extends under the whole edifice, forming school, class, and lecture rooms, vestry, &c.

MCGILL COLLEGE is beautifully situated at the base of the mountain, and immediately in front of the Reservoir. This establishment owes its origin to the liberality of the late Hon. James McGill, who bequeathed the estate of Burnside and £10,000 for its endowment. Besides lecture, class, and other rooms, it contains residences for its professors. A new wing has lately been erected by William Molson, Esq., to be called the "Molson Wing." Its different schools, medicine, law, arts, &c., bear a very high reputation.

MAGNETIC OBSERVATORY. A cut stone octagonal building, with a low tower, surmounted by a dome, for the accommodation of Dr. Smallwood's valuable collection of astronomical and other apparatus; it is attached to and situated on the grounds of the McGill College.

THEOLOGICAL COLLEGE is erected on the ground belonging to the seminary of St. Sulpice, commonly called the "Priests' Farm," abutting on the line of this street, from where a good view of the building can be obtained. It is an extensive and imposing structure, in the Italian style. The plan forms three sides of a quadrangle, with the wings advancing. The building is capable of accommodating a very large number of boarders, and contains a chapel 100 by 40, with a library above it. It is a Roman Catholic institution, and presided over by priests.

ST. ANTOINE STREET.

Passes west from Craig street into the suburbs, and the farther it goes the more is taste displayed in the buildings, it being inhabited by many of the wealthier classes. At the west end it comes very close to a precipitous rock which rises up between it and Dorchester street. There are gardens laid out with terraced walks here and there. The sidewalks are shaded by rows of trees, which give a cool and refreshing shelter from the heat of the sun's rays.

RICHMOND SQUARE, at the upper end of this street, and close to the stopping place of the city cars, is a very neat square, occupying a large space at both sides of the street. The grounds are very nicely laid out, with a fountain in the centre of each square.

attached to it.
ée street, is
er and spire
covered with
grained oak.
rved, which
e by it the
pit there is
columns in
h has three
ends under
ry, &c.

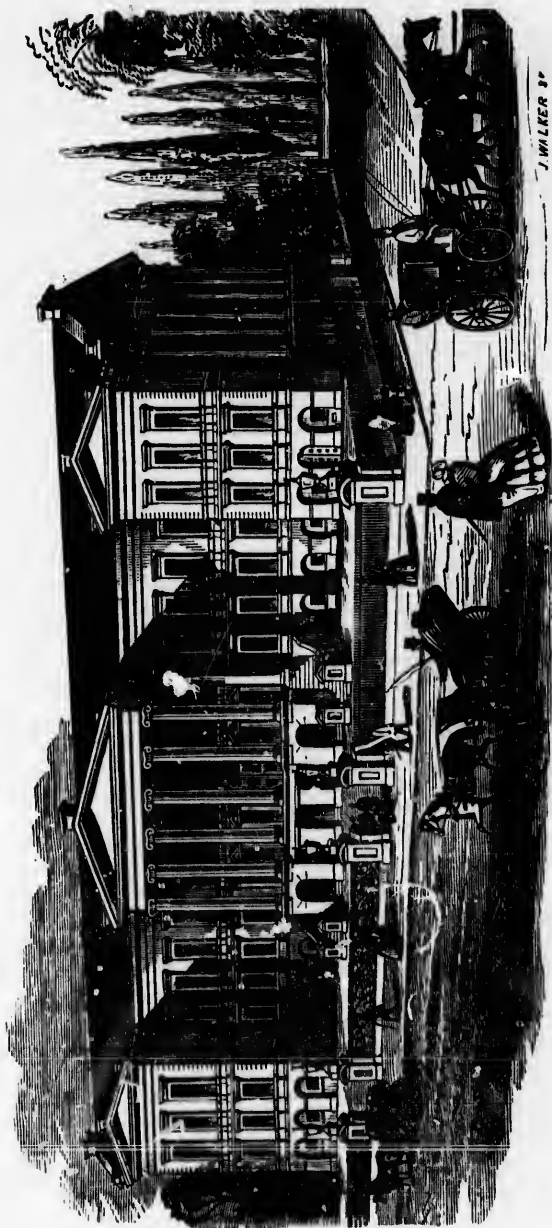
e mountain,
nt owes its
eathed the
ecture, class,
v wing has
e "Molson"
very high

ng, with a
Dr. Small-
; it is at-

o the sem-
utting on
ng can be
ian style.
dvancing.
umber of
ve it. It

er it goes
ny of the
ecipitous
gardens
e shaded
the heat

e to the
a large
aid out,



COURT HOUSE—See page 27.

1865

CON
brick h
Antoin
and is

ME
54 fee
be bui
limest
as it w
other
and co
entire
latter
to this
On ea
modat
be fou
rooms
or pla
case, i
room
inches
readin
entran
the bu
ing-ro
hall b
entire
no per
or go
to be
the sa
will b
for a p
obtain
ample
best p
pictur
this le
gallery
gallery
will b
vided
be her

ST. BONAVENTURE STREET.

COLONIAL CHURCH AND SCHOOL SOCIETY MODEL SCHOOL A large brick building entered through an iron gate directly opposite Little St. Antoine street. This is one of the best common schools in the Province, and is conducted on strictly Episcopalian principles.

MERCANTILE LIBRARY (*new*). The frontage of the building will be 54 feet, and from the pavement to the top of the cornice 58 feet. It will be built of Ohio sandstone above the basement course, which will be of limestone. The elevation will present a handsome appearance, consisting, as it will, of three storeys of various designs, as to window openings and other details. The general outline of the building or plan is that of an H, and consists of two main portions, connected by a spacious hall going the entire height of the structure, and from a wide staircase on one side of the latter access is given to the various rooms on each storey. The entrance to this hall will be in the centre of the *façade*, and thirteen feet in width. On each side of it will be a handsome shop, having good cellar and accommodation, and in the rear portion of the building on the ground-floor will be found three large rooms, consisting of a board-room and two classrooms, and the whole of these can be thrown into a fair sized lecture-room or place for holding meetings of an ordinary character. Facing the staircase, in the centre of the building, will be a room well adapted for a classroom or office of good size. The height of this storey will be 14 feet 6 inches clear. On the first floor, fronting St. Bonaventure street, will be the reading-room, 50 feet long, 40 feet wide, and 17 feet in height, with an entrance from the front hall or landing. The library is in the rear portion of the building, and is to be 48 feet by 28, and of the same height as the reading-room. Between these two rooms, and separated from them and the hall by glazed partitions, will be the librarian's office. From the latter entire supervision is obtained by the librarian over the whole of this floor, no person being able to enter or leave either the reading-room or library, or go up or down stairs without his knowledge. The 2nd or top storey is to be devoted in front to a lecture-room for members of the association, of the same size and over the reading-room, while in rear, over the library, will be found a well-proportioned and effectively lighted room, intended for a picture gallery or museum. The light during the day-time will be obtained from the large skylight in the centre of the room, while at night ample provision is made for a large number of gas-burners, arranged in the best possible manner for throwing an equal and good light upon the pictures or other objects on exhibition. The main staircase terminates on this level, and, opposite to it, and between the lecture-room and picture-gallery, will be a room suitable for an office in connection with the picture-gallery, or for a small private reading-room, &c. The height of this storey will be about 17 feet. The lavatories and other conveniences will be provided for in the lofty and airy basement story. The entire building is to be heated by steam, on Gold's or other approved system.

GRAND TRUNK RAILWAY DEPOT, better known as the "Bonaventure Street Station," is a large shed built of brick in the usual "Depot" style, containing freight, ticket and other offices. The ticket office of the Lachine Cars is also in this building.

ST. CATHERINE STREET.

AZILE DE LA PROVIDENCE, an institution conducted by the nuns, devoted to the care of the aged and infirm.

ST. JAMES' CHURCH (*R. C.*), a large stone building on the corner of this street and St. Denis street, 120 feet long, and 35 feet deep, three storeys high, with a pitched roof. It is under the control of the clergy of St. James' Church and has accommodation for about 600 boys.

SALLE D'AZILE, A Roman Catholic school for the education of the blind, a large brick building, inside a wire fence. It is conducted by nuns.

FIRE STATION No. 5, a brick building in the style of all our smaller fire stations, and, like them, it communicates with the Fire Alarm Telegraph.

PHILLIPS SQUARE, a small plot of ground of very unprepossessing appearance, used principally as a "short cut."

CHRIST'S CHURCH CATHEDRAL (*C. of E.*) at the corner of University street, is a beautiful edifice in the mediæval Gothic style. The plan is cruciform, and is indeed a model of ecclesiastical architecture. The tower and spire—the latter of which is well proportioned and springs gracefully from the former—are at the intersection of the four arms of the cross, and measure 224 feet in height. The church is built of Cæn stone and Montreal limestone, the latter having been obtained from the neighbouring quarries, and the former from Normandy. Length of the building inside 187 feet; width of nave 70 feet; transept, including tower, 99 feet. The upper stage of the tower contains a peal of bells, and the clocks are placed immediately above the corbel-table. The windows are good and copied from the best mediæval English churches. The front entrance is beautifully designed; in fact the building is unequalled on this continent.

EXHIBITION BUILDING, a large unsightly building, sometimes used as a concert hall, for which it is in no wise adapted. It has been used as a drill-shed by the Volunteer Artillery, but owing to the large number of pillars, it is as useless for this as almost any other purpose. The best thing that could be done is to pull it down, and build in its stead a shed worthy of our gallant Volunteers.

PROTESTANT ORPHAN ASYLUM is a neat stone building, and one of the most useful as well as the best conducted institutions in the city, and is sustained by the benevolence of private individuals.

CHURCH OF ST. JAMES THE APOSTLE, (*C. of E.*), is the Protestant church furthest west in the city. Its appearance outside is very fine, being built of Montreal stone, in a simple and chaste Gothic style of architecture. The length is 115, the width 45 feet, and the height from floor to apex of

roof 6
wood,
Ohio
the cl
there
spire
from
disting
which
lower
a men
Philli
bells.
be fin
to the

JE
North
Engli
New
and b
beaut

VI
neith
spot.
very
ment,
progr
garris
durin

TR
cours
early
body
quoin
is wo
to th
entra
as we
114
is 36
ceilin
galle
with

roof 60 feet. It has no ceiling, but the roof presents a variety of stained wood, its elegant arches resting on corbels of dark Montreal and white Ohio stones, which mingle together in striking contrast. At the end of the church stands a memorial window to Prince Albert; besides this there are five stained glass memorial windows. A handsome tower and spire are now (June, 1865,) being added to this church, as a memorial from Mr. and Mrs. Charles Phillips to a deceased brother. The tower is distinct from the main building and has a connecting corridor, through which is the principal entrance to the church on the west side. In the lower storey of the tower there will be three stained glass windows, one as a memorial, the other two containing the armorial bearings of Mr. and Mrs. Phillips. In the third or upper storey will be placed a clock and a peal of bells. The spire will be constructed of wood and galvanized iron, to be finished with a handsome vane. The total height from the ground to the top of the vane will be 130 feet.

ST. CONSTANT STREET.

JEWISH SYNAGOGUE. The first regularly built synagogue in British North America, which has been erected for the Polish, German and English ritual, and one of the handsomest buildings of the kind between New York and Cincinnati. It is built in the Grecian style of architecture, and both in its exterior and interior finish a perfect gem of architectural beauty. John James Browne, Esq., architect.

ST. DENIS STREET.

VIGER SQUARE GARDEN is the finest and most extensive in the city, neither pains nor expense having been spared to render it an attractive spot. Four basins with fountains have been constructed; as also has a very handsome, though small, hot-house. A very desirable improvement, in the way of a drinking fountain has been added to the many other progressive features of this garden. The band of one of the regiments in garrison plays here for a couple of hours, once a week, sometimes oftener, during the summer months.

TRINITY CHURCH (C. of E.) This magnificent edifice now (1865) in course of erection for the Rev. Canon Bancroft's congregation, is in the early English style of Gothic architecture and built of Montreal stone, the body of the work being natural face coarsed ashlar. The weatherings, quoins, &c., are finely dressed; the roof is covered with slate; the spire is wood, covered with galvanized iron, and together with the tower rises to the height of 200 feet. The lower part of the tower forms the principal entrance porch, and there are in addition two side entrances, giving access as well to the galleries and basement. The length of the church inside is 114 feet, the width 65 feet. The chancel, which is in the form of an apex, is 36 feet by 23 inside. The nave is 40 feet wide, and has a grained ceiling rising to a height of 52 feet. The side aisles, in which there are galleries, are 12 feet 6 inches wide, and have pannelled plaster ceilings, with the roof timbers exposed. The body of the church is lighted by 12

windows, each terminating in traced heads, and clerestory windows formed in the roof. The church is to afford accommodation for over 4000 persons. Under the church is a capacious basement, 14 feet high, well lighted and having 3 distinct entrances. It contains a lecture room 100 feet long by 65 feet wide, library, vestry, and all the necessary accommodation for schools, &c.

ST. JAMES' CHURCH (R. C.) This handsome building is erected upon the ruins of the one destroyed by the great fire of 1852, known as the Bishop's Church, which was of the Roman-Ionic style; but altered in form and extended in length, is now built after the most admired specimens of the early pointed style, chiefly drawn from existing examples of the thirteenth century; it is a fine example of what is sometimes called Christian architecture. The windows are of stained glass.

DEAF AND DUMB INSTITUTION. This is a fine large stone building, above Sherbrooke street, devoted, as its name infers, to the education of the deaf and dumb. It is open to visitors, and is conducted by nuns.

ST. DOMINIQUE STREET.

GERMAN CHURCH. This is a neat, though small, edifice, opposite the St. Lawrence Market, used by our German Protestant fellow-citizens.

ST. FRANCOIS XAVIER STREET.

Is remarkable only as being the "Wall Street" of Montreal, chiefly famous, of course, as being the resort of brokers, money-changers, lenders, &c., &c.

ST. GABRIEL STREET.

CANADA HOTEL. A large, convenient, second class house, very well conducted, and much frequented.

NEW CITY GAS WORKS. The office of this local monopoly is situated in this street, at the corner of Little St. James.

GAREAU HOTEL. A house used more as a first-class boarding house than as an hotel, and is much frequented by the legal fraternity at luncheon hour.

SCOTCH KIRK is a plain stone building, and will seat about 800. This is one of the oldest Scotch churches in the city. A splendid new edifice is being reared for the accommodation of this congregation in a more *fashionable* part (Dorchester Street west), to be called "Knox Church," a description of which will be found in its proper place. The present church is under the pastoral guidance of the Rev. A. F. Kemp.

MUSEUM OF THE GEOLOGICAL SURVEY is a large building facing the end of the Champ de Mars. The museum contains samples of stones, coals, fossils, and all the other concomitants that contribute to form a geological museum, and is under the direction of the celebrated geologist,

ws formed
4000 per-
ell lighted
0 feet long
odation for

is erected
known as
altered in
mired spe-
amples of
mes called

e building,
ucation of
nuns.

posite the
izens.

l, chiefly
s, lenders,

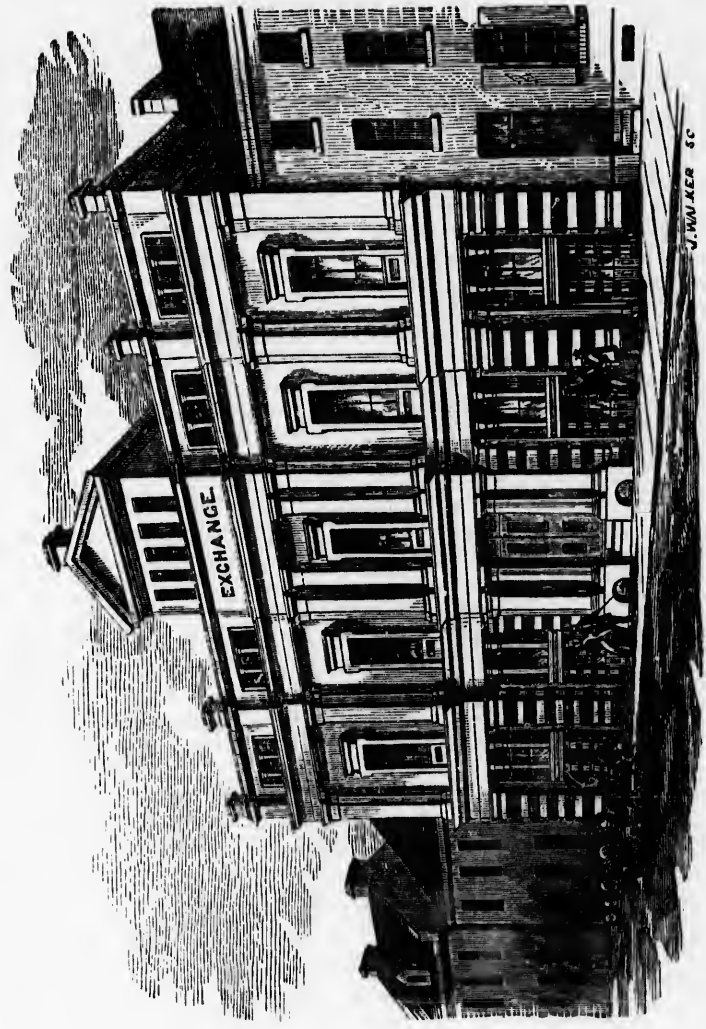
very well

s situated

ing house
ty at lun-

00. This
w edifice
n a more
Church,"
e present

ncing the
f stones,
o form a
geologist,



MERCHANTS' EXCHANGE—See page 37.

Sir W
worth

St.
some o
person
Jenkin

St.
13th o
stone a
elegan
length
the pa
Sulliv

Do
streets
manuf

PR
neat h

CA
vince.

Th
Ceme
There
with,
cars t

CI
compa
station
capabl
shop a
compa
track.
be ver
steam

TH
wall.
wishin
to tha

Sir William E. Logan, and Dr. T. Sterry Hunt. The museum is really well worthy a visit.

ST. HELEN STREET.

ST. PAUL'S CHURCH (*Presbyterian*), built of dressed stone, is a handsome edifice, in the Gothic style of architecture, and will seat nearly 1000 persons. The interior is neatly fitted up in the Grecian style. Rev. John Jenkins, D.D., pastor.

ST. JOSEPH STREET.

ST. GEORGE'S CHURCH. Is a very neat building, in the style of the 13th century. It is of rough stone, with towers and a handsome flight of stone steps at the main entrance. The interior is fitted up in a chaste and elegant style, and has an excellent organ. The building is 150 feet in length by 56 feet in width, and will seat over 1,500 persons. Is under the pastoral charge of the Rev. William Bond and the Rev. Edward Sullivan.

DOW'S BREWERY. A large building on the corner of this and Colborne streets. Is the most extensive brewery in the country, and its celebrated manufactures are well known throughout Canada.

PRESBYTERIAN CHURCH, at the corner of Seigneurs street, is a very neat brick building, and is adapted to seat about 500 persons.

CANTIN'S SHIP-YARD. One of the most celebrated yards in the Province. Is worthy a visit.

ST. LAWRENCE MAIN STREET.

This the main avenue leading to the mountain and Mount Royal Cemetery and is the principal business street in the St. Lawrence suburb. There are a large number of fine buildings, principally dry goods houses, with, at the upper end, many private residences. The City Horse Railway cars traverse this street as high up as the toll-gate.

ST. MARY STREET.

CITY PASSENGER R. R. Co. The chief stables and station of this company are situated below the toll-gate and are well worthy a visit. The station is adapted for an innumerable number of cars, and the stables are capable of accommodating about 130 horses. There is also a machine shop and an office with dwelling for superintendent and foreman. The company have a number of other stables on the different branches of their track. From opposite *this* station the Current Ste. Marie commences to be very troublesome to vessels coming up the river, at times taking four steam tugs to tow a vessel to the wharves.

THE JAIL is a substantial stone building, surrounded by a high stone wall. It is comparatively a new edifice, and cost over \$120,000. Parties wishing to see the interior can do so by obtaining an order from the Sheriff to that effect.

MOLSON'S BREWERY AND DISTILLERY is one of the institutions of Montreal, and one of the most extensive establishments of the kind in the Province.

PAPINEAU SQUARE, a large piece of uneven ground without the slightest attraction.

PAPINEAU MARKET, a large brick building fitted up in the same style as most of the other markets, with divisions for fowl, fish, flesh, &c. It is situated in Papineau Square. John James Browne, Esq., architect.

MOLSONS (COLLEGE) BARRACK is a large quadrangular brick building, originally built with the intention of becoming a first class college for both sexes, and to bear the name of its founder, the late T. Molson, Esq.; this scheme not succeeding, the building was leased to Government as a barrack, for which purpose it has since been used, and is now occupied by H. M 30th Regt. of the Line. George Browne, Esq., architect.

ST. THOMAS CHURCH. This church was built by the late T. Molson, Esq., at his sole expense. It is a neat brick building, having a tower with a clock in the centre. The church is now used by the regiments in garrison, and the sacred office is filled by a military chaplain.

ST. NICHOLAS STREET.

LOVELL'S PRINTING OFFICE. The most extensive printing establishment in the Provinces. The presses are all worked by steam and fed by *girls*, a new feature in the business, introduced by the enterprising proprietor, Mr. John Lovell. The bindery in connection with this establishment is unsurpassed on the continent, not only for the first-rate work turned out, but for its completeness in every detail. The buildings are heated by steam and furnished with every convenience which skill has devised. When we say that it is from this house the celebrated Canada Directory of 1857, and also the first-class Canadian Educational series now so generally used throughout the country are issued, we need not further praise the energy or public spiritedness of the proprietor, who is at all times willing to allow parties to visit the premises.

ST. PAUL STREET.

Is the principal *Wholesale* business street in the city, and contains in various portions of it numerous lofty and elegant warehouses, to which additions are constantly being made, it being impossible in our limited space to particularize, we shall direct the visitor's attention merely to the *Public* buildings.

BONSECOURS CHURCH (R. C.). The oldest in the city, having been erected in 1658; it was burnt in 1764, but rebuilt in 1771. It contains a good organ, and will seat about 2,000 persons; there is a building used as a school connected with the church.

tutions of
kind in the

the slightest

e same style
, &c. It is
itect.

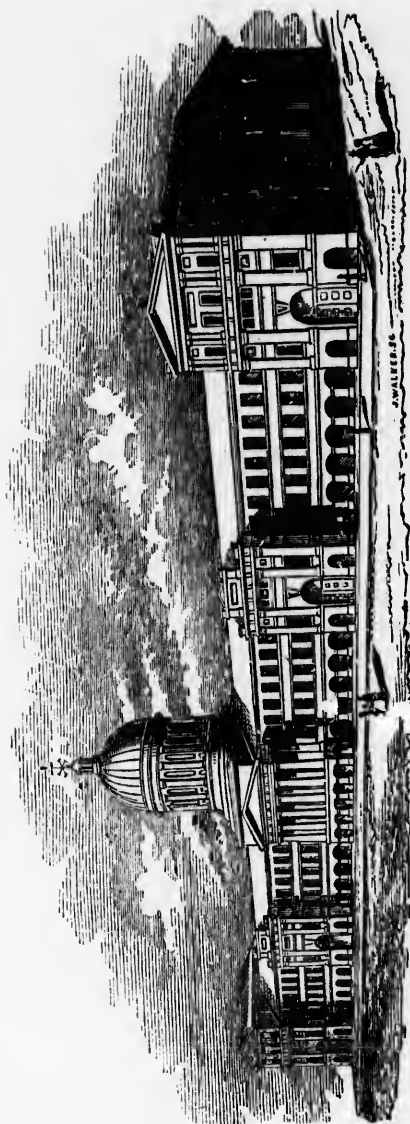
brick build-
s college for
n, Esq.; this
s a barrack,
d by H. M

T. Molson,
tower with
nts in garri-

g establish-
and fed by
ing proprie-
tablishment
turned out,
heated by
as devised.
a Directory
now so gen-
rther praise
l times will-

contains in
es, to which
our limited
erely to the

having been
It contains
uilding used



BONSECOURS MARKET See page 57.

Bons
Doric st
street, c
Americ
whole l
cil room
Fire-ala
cular fr
market
for the
up in t
ventila
farmers
costum
wares

VIC
stone b
racks
Fusilie

ME
treal, i
conseq
somew
entran
readin
other
Esq.,

Co
diatel
dimin

Mc
stone
subje
presen

M
build
your
tion,
a vis

BONSECOURS MARKET. A magnificent pile of stone, in the Grecian-Doric style of architecture; has a front of three stories on Commissioners street, cost about \$300,000, and is equal to any building of the kind in America. It consists of a large butchers' market, extending almost the whole length of the building, over which is a fine Concert Hall, the Council room, and the various offices of the Corporation, including that of the Fire-alarm Telegraph, the wires of which may be seen converging, to a circular frame on the roof, from all parts of the town. Beneath the butchers' market is a large basement devoted to pork, cheese, vegetables and fish, for the latter of which a separate portion has been allotted and fitted up in the best style with marble slabs, fountains, drains, and thorough ventilation. Bonsecours presents a lively scene on market days, when the farmers congregate; the stranger is amused by the quaintness of their costumes, and the abundance of gestures they exhibit, as they press their wares upon the customers.

VICTORIA BARRACKS, or Nuns' Buildings. A magnificent block of stone buildings, originally intended for stores, but at present used as Barracks for H. M. 63rd and 25th Regiments. The Grenadier and Scots Fusilier Guards occupied these Barracks during their sojourn in Canada.

ST. SACRAMENT STREET.

MERCHANTS' EXCHANGE. This fine building, the "Rialto" of Montreal, is situated in this, one of the narrowest streets of the city, and is consequently seen to great disadvantage. The premises cover an area of somewhat less than half an acre, which comprises an open court used as an entrance to the Corn Exchange and other offices. The building contains a reading-room, the Board room and offices of the Board of Trade, and many other public and private offices of a commercial nature. George Browne, Esq., architect.

CORN EXCHANGE, is a small, neat brick and stone building, immediately in rear of the Merchant's Exchange. This building is on rather a diminutive scale for the leading commercial city of the Province.

MONTREAL TELEGRAPH COMPANY'S OFFICE, a substantial looking stone building, like its opposite neighbour, the Merchant's Exchange is subject to the disadvantage of being in a very narrow street. It however presents a very good appearance. George Browne, Esq., architect.

UNIVERSITY STREET

MUSEUM OF THE NATURAL HISTORY SOCIETY, is a large brick building in view of the English Cathedral. The managers have endeavoured by all fair means to get together a very large and very good collection, particularly of the Canadian species. This institution is well worthy a visit.

VISITATION STREET.

ST. PETER'S CHURCH, (R. C.) is a very handsome cut-stone building, in the style of the 13th century, and will accommodate over 3,000 persons. A handsome cut-stone building is attached to it, being the residence of the clergy in connection with this church.

WATER STREET.

MILITARY HOSPITAL. This is a large stone building, enclosed by a high stone wall, and almost projecting over the wharf in rear. This is a very good situation for an hospital, if for no other reason than having plenty of fresh air from the river.

QUEBEC GATE BARRACKS, occupied by two batteries of Royal Artillery, and detachments of the Commissariat and Engineer corps. These buildings formerly, under the old French rule, belonged to a nunnery.

WILLIAM STREET.

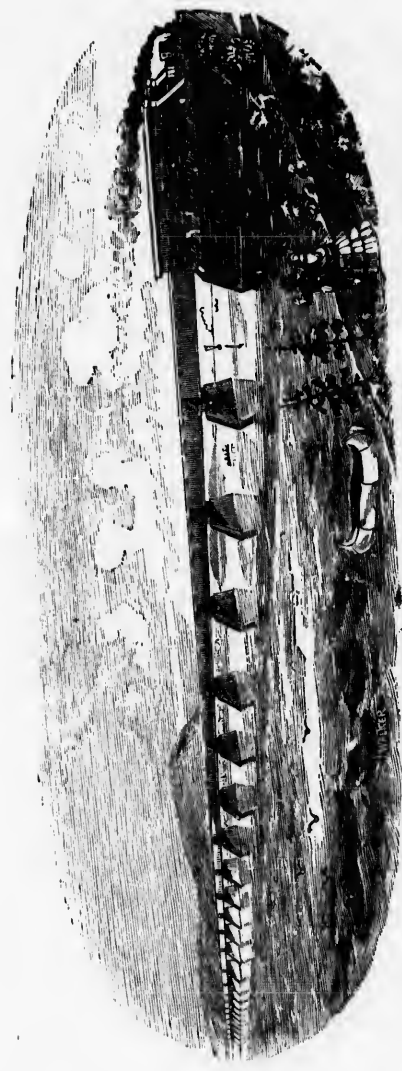
G. T. R. CARTAGE Co's STABLE. This is a very large brick building, erected by Shedden & Co., for the accommodation of their own horses, and is about the largest building of the description in Montreal. It is ventilated by means of eight shafts running through the roof.

building,
000 per-
esidence

ed by a
his is a
having

rtillery,
e build-

e brick
eir own
ontreal.



VICTORIA BRIDGE, MONTREAL.—THE LONGEST BRIDGE IN THE WORLD.

See page 31.

THE
of Mon
city; a
Point;
Cantin,
the cana
power a

NEW
is \$300,
pany in
It is gre
spirited
oppositi
pay han

WAT
one and
river su
Wheel-l
water is
archway
the bu
twenty
breast"
excavat
thousan
The len
voirs by
Total c
\$1,800.

FIRE
success.
tions w
the Ob

VICT
H. R.
at Poin

PUBLIC WORKS, &c

THE LACHINE CANAL, which extends for $8\frac{1}{2}$ miles, from the Harbour of Montreal to Lachine, has kept pace with the general progress of the city; a large new dock has just been built outside the lock at Windmill Point; a large new dry-dock has also recently been completed by Mr. Cantin, the capacity of which is sufficient to take in any vessel navigating the canals. Mills, foundries, and in fact all manufactories requiring water power are rapidly springing up on its banks.

NEW CITY GAS WORKS were incorporated in July, 1847. Its capital is \$300,000. This Company has the monopoly, it being the only gas company in the city, and of course the consumers are charged exorbitant rates. It is greatly to be wondered at that some of our energetic and public spirited men do not take the matter in hand and start a new company in opposition to the present, there is not the slightest doubt but that it would pay handsomely.

WATER WORKS. The water is taken from the St. Lawrence about one and a half miles above the Lachine Rapids, where the elevation of the river surface is about 37 feet above the Harbour of Montreal. The Wheel-house at the termination of the aqueduct is worthy of notice. The water is admitted to and discharged from this building through submerged archways under covered frost proof passages, extending above and below the building. There are two iron wheels, twenty feet diameter, and twenty feet broad. These wheels are upon the suspension principal, "high breast" or "pitch back," with ventilated buckets. These reservoirs are excavated out of the solid rock, and have a water surface of over ninety thousand square feet, 206 feet above the harbour, with a depth of 25 feet. The length is 623 feet, with a breadth of 173 feet, formed into two reservoirs by a division wall. The two contain about fifteen million gallons. Total cost of aqueduct, machinery, pumping-main, and reservoirs about \$1,800,000.

FIRE ALARM TELEGRAPH was recently erected, and proved a thorough success. The chief office is in the City Hall, from which it has connections with upwards of 64 boxes, the church bells, several public clocks, the Observatory and Water Works near McGill College.

VICTORIA BRIDGE. This gigantic structure, which was inaugurated by H. R. H. the Prince of Wales, in August, 1860, spans the St. Lawrence at Point St. Charles, the terminus of the Grand Trunk Railway. It is

one of the most stupendous and massive structures of modern times. It is tubular, consisting of 23 spans of 242 feet each, with the exception of the one in the centre, under which the steamboats pass, it being 330 feet wide. The dimensions of the tubes are 19 feet high at the extreme end, rising to 22 feet in the centre tube, by 16 feet wide. The Bridge is approached at each end by a causeway terminating in abutments of solid masonry. The southern causeway is 240 feet long, and the northern 1,400; the width of each being 90 feet. The total length of the bridge is 2 miles, less 50 yards.—250,000 tons of stone and 8,000 tons of iron were used in its construction. By this Bridge two extensive and populous sections of country are united, thus adding to their social, agricultural and commercial development.

RIFLE RANGES, situated at Point St. Charles were secured for the great Rifle Tournament in 1863, and have been used by the Volunteers since then for practice, matches, &c., the butts were so placed that all the firing was towards the river. They are now closed.

THE EMIGRANTS' BURIAL GROUND, is a large square enclosure at Point St. Charles, in view of the Bridge: it is planted with trees, having a large boulder in its centre, placed on a cut stone base, and bearing an appropriate inscription to the memory of the emigrants that perished of ship fever in 1847.

GRAND TRUNK RAILWAY. The chief offices and stations of this Corporation are situated at Point St. Charles, and are very extensive, consisting of Machine Shops, Engine rooms, Passenger, Freight and Car Sheds, with all the other accessories of a complete Railway Station. A fine view may be had from the small bridge which leads from the Passenger shed to the Chief Offices; the Mountain, the Victoria Bridge, the River, &c., are all seen to great advantage from this position.

DR

Round
distance
Street o
and asc
leads to
nue our
lies nest
arms fr
and gra
are qui
restrain
there, a
There a
glorious
after b
dischar
the spir
almost
residen
nada a
flavor
the mo

Mo
travell
miles
pictur
and in
right
left a
gates,
and g
and th
are th
repay
exten

LA

DRIVES, &c., IN AND AROUND THE CITY.

ROUND THE MOUNTAIN. This is considered the favourite drive. The distance round is nearly nine miles. The general route is up the Main Street of the St. Lawrence Suburb, past the toll gate, turn off to the left, and ascend gradually the Mountain side; arriving at a branch road which leads to the Mount Royal Cemetery, we take the road to the right and continue our course till we arrive at Cote des Neiges, which pretty little village lies nestled in the bosom of the mountain, and sheltered by its branching arms from North and East; leaving the village we drive on up the grade and gradually reach the summit, at which a toll gate is placed. Here we are quite shut in on all sides, but as our vehicle turns the curve, we cannot restrain ourselves from indulging in many exclamations of admiration; there, almost at our feet lies the city, with its spires, its houses, its streets. There also is Canada's pride, the Victoria Bridge, the Nuns' Island in its glorious verdancy, the glittering river, with many gallant vessels, which after battling the breeze, now lie quietly at the wharf, either loading or discharging their cargoes. There also is St. Helen's Island, and behind it the spires of the church in Longueuil village. The base of the mountain almost all around is adorned with many elegant villas, the palatial summer residences of our merchant princes. The choicest orchards of Lower Canada are also situated around it, the fruit being of the most delicious flavor and greatest luxuriance of yield. Taken as a whole, this is one of the most pleasant drives in Canada.

MOUNT ROYAL CEMETERY is one of those places of interest which travellers never neglect to visit. It is a very pleasant drive of about two miles from the city on the mountain road. The cemetery lies in a very picturesque position in the valley between the two mountains. Lofty, wide and imposing entrance gates first meet the view, inside these gates on the right is a handsome and substantial residence for the superintendent, on the left a small but pretty church. The lofty pointed pinnacles of the entrance gates, the high pitched roofs of the house and church, with the bell turret and gabled windows are in perfect keeping with the surrounding scenery, and the luxuriant foliage of the trees. The "Molson" vaults and monuments are the handsomest as well as the largest on this continent, and will well repay the time and small expense necessary to enjoy a drive through the extensive and well laid out grounds.

LACHINE ROAD. This is a very pleasant drive, going out St. Joseph

street to the toll-gate, passing which we are on what is called the Upper Lachine road. At each side of us are the farms of our market gardeners and others. A road leading from this takes us to Côte St. Paul where there are a number of factories and a very pretty church called:—

THE UNION CHURCH. This, one of the prettiest little churches on the island, was erected last year on a commanding site facing the locks of the Lachine Canal, in the Gothic style of architecture, constructed with red, white and black bricks, ornamental tessalated tile sands, &c. The main entrance is in the tower, which forms the north-west corner of the building and is surmounted with a spire. John James Browne, architect.

We leave Côte St. Paul and pass through the small villages of the Tanerries, Blue Bonnets, &c., and arrive at Lachine, a village once well-known, it being the residence of the late Sir George Simpson, the Governor of the Hudson Bay Company, and also the point from whence all orders were dispatched to the many posts of the Company throughout their vast territory. Returning to town we take the Lower road, which is directly along the bank of the river, presenting scenery of unsurpassed beauty and grandeur; we see the Lachine Rapids boiling, foaming and dashing in their wild fury from rock to rock, from crevice to crevice. If the proper hour is selected for this truly delightful drive, a view may be had of the descent of the steamer through these Rapids.

LONGUE POINT ROAD. This is another favourite drive along the river side, down St. Mary street, through the toll-gate to the village of Hoche-laga, the quarters of a portion of the garrison, and in which are two pretty little rural churches, one Protestant the other Roman Catholic; continuing down this road we arrive at a large commanding looking building, the Convent of the Holy name of Mary, passing on a few miles further we arrive at *Longue Pointe*.

BACK RIVER ROAD is another drive, it leads to (Moncklands) the Maria Villa Convent, which was formerly the residence of the Governor General. There is a very handsome church in connection with this convent. This road also leads to Isle Jesu and many other pretty villages.

LACHINE RAPIDS are situated opposite the Nunn's Island, and nearly half way between the city and the village of Lachine. The tourist should take the cars for Lachine, starting from the Bonaventure Street Station at 7 o'clock A.M., take the steamboat at Lachine to descend the Rapids. Running a rapid is at all times an exciting circumstance, whether it be done in a birch bark canoe on a small river, or in a steamer on the mighty St. Lawrence. When the steamer approaches the Rapid a pilot, skillful, experienced, and specially chosen for the purpose, takes charge of the wheel, extra hands stand by to assist, while others go aft to the tiller, to be ready to steer the vessel by its means should the wheel tackle by any accident give way; the captain takes his place by the wheelhouse, ready with his bell to communicate with the engineer; the vessel plunges into the broken and mad waters, she heaves and falls, rolls from side to side, and labors as if she were in a heavy sea, the engine is eased, and the steamer is carried

forward
long on t
foam of f
a contran
these ma
smooth g
but old
but with
through,
skill, the
passenge
a good a

St. H
the trees
probably
would b
tiest spot
tance by

forward with frightful rapidity, sometimes she appears to be rushing headlong on to some frightful rock that shows its bleak head above the white foam of the breakers, in the next instant she has shot by it and is making a contrary course, and so she treads her way through the crooked channel these mad waters are rushing down, a few moments suffice for this, and the smooth green waters are reached again, then all breathe freely, for none but old and experienced pilots, can run the great Rapids of Lachine but with bated breath. A slight rapid called Norma Rapid is then passed through, and, after shooting under that great monument of engineering skill, the Victoria Bridge, and past the Canal Basin, the steamer lands her passengers at one of the wharves at about 9 o'clock, just in time and with a good appetite for breakfast.

ST. HELENS ISLAND, which, were it not for the white tents seen among the trees, no one would ever suspect to be a strong military post, but which probably holds more shot and shell in its cool underground magazines than would blow all the Island of Montreal to atoms. This is one of the prettiest spots near Montreal, and is open to the public, who can gain admittance by a pass from the Town-Major.

CITY COUNCIL.

HIS WORSHIP THE MAYOR,

J. L. BEAUDRY, Esquire.

WARDS REPRESENTED.

<i>East Ward</i>	- - - - -	ARCHAMBAULT, ROLLAND, GRENIER,
<i>Centre Ward</i>	- - - - -	GORRIE, HIGGINSON, MCGIBBON.
<i>West Ward</i>	- - - - -	Ogilvie, STEVENSON, ALEXANDER.
<i>St. Ann's Ward</i>	- - - - -	DONOVAN, MCGAUVRAN, RODDEN,
<i>St. Antoine Ward</i>	- - - - -	BROWN, McNEVIN, McCREADY.
<i>St. Lawrence Ward</i>	- - - - -	ISAACSON, BOWIE, DEVLIN.
<i>St. Louis Ward</i>	- - - - -	CASSIDY, DAVID, LEDUC.
<i>St. James Ward</i>	- - - - -	BASTIEN, CONTANT, LAMOUREUX.
<i>St. Mary's Ward</i>	- - - - -	POUPART, GOYETTE, LABELLE.

CHIEF OFFICERS OF THE CORPORATION.

John P. Sexton, City Recorder.	H. I. Ubbotson, Clerk Recorder's Court.
Chas. Glackmeyer, City Clerk.	Louis Lesage, Supt. Water Works.
Edouard Demers, City Treasurer.	L. W. Tessier, Accountant Water Works.
P. MacQuisten, City Surveyor.	A. Bertram, Chief Engineer Fire Department.
Peter L. Macdonell, Assistant City Clerk.	J. B. Dubuc, Inspector of Buildings.
F. W. L. Penton, Chief of Police.	

HENRY STUART, }
ROUER ROY, } Attornies.

W. ROSS, }
C. F. PAPINEAU, } Notaries.

TARIFF FOR HACKNEY CARRIAGES.

PLACES.		Two or Four Wheeled Carriages drawn by one horse.		Coaches or Four Wheeled Carriages drawn by two horses		TIME ALLOWED.		
FROM	TO	For one or two persons.	For three or four persons.	For one or two persons.	For three or four persons.			
		\$ cts.	\$ cts.	\$ cts.	\$ cts.			
Any Place.	Any other within the same division and back.	0	15	0	25	0	40	½ an hour.
		0	5	0	00	0	00	
Any Division	Any place in another division and back.	0	25	0	40	0	50	¾ of an hour over ¼ of an hour and under one hour
		0	35	0	50	0	75	
Any Place.	Any other in the City.	0	50	0	70	0	00	One Hour. For every additional ¼ hour.
		0	20	0	30	0	40	

Reasonable weight of Luggage allowed free of charge.
 Children under 12 years of age to be charged half-price.

DIVISIONS OF THE CITY.

The **FIRST** DIVISION comprises the East, Centre and West Wards, (including the South-West side of McGill Street, and the North-West side of Craig Street.)

The **SECOND** DIVISION comprises the St. Ann, St. Antoine and St. Lawrence Wards (exclusive of McGill and Craig Street.)

The **THIRD** DIVISION comprises the St. Louis Ward, (exclusive of Craig Street), the St. James and St. Mary's Wards.

CURRENCY TABLE.

The following are the "Currency" rates of several British coins, disregarding the fractions of cents:

	s. d.	\$ c.
Sovereign - - - - -	24 3	or 4.85
Half " - - - - -	12 2	or 2.43½
Crown - - - - -	6 1	or 1.23
Half do. - - - - -	3 0½	or 0.61
Florin - - - - -	2 5	or 0.48
Shilling - - - - -	1 3	or 0.25
Sixpence - - - - -	7½	or 0.12½

Frequently in the common usages of trade, the Crown and Half Crown are received respectively at 6s. and 3s. The Sevenpence-half-penny is commonly called a "York Shilling" in consequence of 12½ cents being called a shilling in the United States, and also in contradistinction to a shilling currency.

FIRE DEPARTMENT.

Chief Engineer, A. Bertram, cor. Craig and Chenneville sts. ; assistant engineer, Wm. Patton, 312 Lagauchetiere st.

FIRE ALARM TELEGRAPH.

Chief Operator, F. H. Badger.

- | | |
|---|--|
| <ol style="list-style-type: none"> 1. City Hall and Police Station, Jacques Cartier Square. 2. Engine House, Dalhousie sq. 3. Engine House, Court House sq. 4. Corner of St. Gabriel and St. Paul sts. 5. Corner of St. Francois Xavier and St. Paul sts. 6. Corner of St. Francois Xavier and Notre Dame sts. 7. Cor. of St. Sacramento & St. Peter sts. 8. Corner of Notre Dame and McGill sts. 9. Corner of St. Paul and McGill sts. 12. Corner of Queen and Wellington sts. 13. Corner of Wellington & Dalhousie sts. 14. Corner of Colborne and Ottawa sts. 15. Corner of Wellington, McCord and Murray sts. 16. Mill and Canal Works. 17. Grand Trunk Works. 18. Corner of St. Gabriel market. 19. Corner of Seigneurs and William sts. 21. Corner of St. Joseph and Canning sts. 23. Corner of St. Joseph and Mountain sts. 24. Corner of St. Maurice st. and Dupré la. 25. Police Station, Chaboillez sq. 26. Corner of St. Antoine and St. Genevieve sts. 27. Corner of St. Antoine and Cemetery sts. 28. Corner of St. Antoine & Mountain sts. 29. Corner of St. Antoine and Guy sts. 31. Cor. of St. Catherine & Mountain sts. | <ol style="list-style-type: none"> 32. Corner of Sherbrooke and Peel sts. 34. Corner of St. Catherine st. and McGill College av. 35. Corner of Sherbrooke and Durocher st. 36. Corner of Brunswick and Dorchester st 37. Corner of Beaver Hall Hill and Lagauchetiere sts. 38. Engine House, St. Catherine st. 39. Corner of Bleury and Dorchester sts. 41. Corner of Chenneville and Craig sts. 42. Corner of St. Urbain and Dorchester sts 43. Corner of St. Urbain and Craig sts. 45. Corner of St. Lawrence and Lagauchetiere sts. 46. Corner of St. Lawrence and St. Catherine sts. 47. Cor. of Sherbrooke & St. Lawrence sts. 48. Guilbault's Gardens & St. Lawrence st. 49. Engine House, German st. 51. Cor. of St. Denis & St. Catherine sts. 52. Cor. of Sanguinet & Lagauchetiere sts. 53. Corner of St. Denis and Craig sts. 54. Corner of St. Mary and Wolfe sts. 56. Corner of Dorchester and St. André sts 57. Corner of Visitation and Craig sts. 58. Corner of Amherst and Ontario sts. 59. Corner of Panet and St. Catherine sts. 61. Corner of Papineau Market. 62. Jail Gate, St. Mary st. 63. Corner of St. Mary and Dufresne sts, 64. Redpath's Sugar Refinery. 65. Corner Fullum and Ontario sts. |
|---|--|

Montreal

"

"

"

"

"

"

"

"

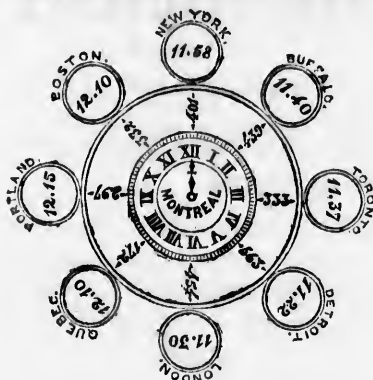
"

"

"

"

TIME AND DISTANCE INDICATOR.



TRAINS ARE RUN

- Between Portland and Island Pond, by Portland Time.
- “ Island Pond and Montreal, by Montreal Time.
- “ Riviere du Loup “ “ “
- “ Rouse's Point, “ “ “
- “ Province Line and Montreal, by Montreal Time.
- “ Montreal and Toronto, by “ “
- “ Toronto and Sarnia, by Toronto “
- “ Fort Erie and Goderich, “ “
- “ Port Huron and Detroit by Chicago Time.

TABLE OF DISTANCES.

Montreal to Liverpool, England	2750 miles
“ to Kingston, C.W.....	173 “
“ to Quebec, C. E.	180 “
“ to Toronto, C.W.....	333 “
“ to Halifax, N. S.....	815 “
“ to Rouse's Point, U. S.....	44 “
“ to Portland, “	292 “
“ to Boston, “	333 “
“ to New York, “	403 “
“ to Cincinnati, “	964 “
“ to Chicago “	1040 “
“ to St. Louis, “	1345 “

IMPERIAL FIRE INSURANCE COMPANY

OF LONDON.

Established 1803.

This Office offers a perfect guarantee to the Assured, from its long standing and the large amount of its Paid-up Capital and Funds in hand.

LOSSES HITHERTO PAID OVER - - - - \$13,000,000.

Risks on Merchandise, Household Furniture, Buildings, and
and other Property taken at Lowest Current Rates.

NO CHARGE FOR POLICIES OR ENDORSEMENTS.

Losses in Canada promptly settled without Reference to London.

This Company has invested, in conformity with the Act 26 Vic., Cap. 43.

ONE HUNDRED THOUSAND DOLLARS

For the special security of Policy-holders in Canada.

RATES MODERATE. — LOSSES PROMPTLY SETTLED.

W. H. RINTOUL,

Agent for Canada.

OFFICE 87 and 86 St. Francois Xavier Street.

ROBERT MILLER,

(LATE R. & A. MILLER,)

Paper Maker, Wholesale Stationer,

BOOKBINDER, ACCOUNT BOOK MANUFACTURER,

AND DEALER IN

WINDOW SHADES AND WALL PAPERS.

AGENT FOR LOVELL'S SERIES OF SCHOOL BOOKS.

OFFICE AND SALEROOM:

60 ST. FRANCOIS XAVIER STREET.

MONTREAL.

CH

PU

SOAP



133

Strange

DAVIDSON & CO.,
CHEMISTS & APOTHECARIES,

IMPORTERS OF

PURE DRUGS AND CHEMICALS,
FRENCH AND ENGLISH PERFUMERY,
SOAPS, BRUSHES, FANCY ARTICLES, PATENT MEDICINES,
SURGICAL INSTRUMENTS, &c., &c., &c.



ROBERTO W. REINHOLD, MONTE.

CENTRAL DRUG HALL,
133 GREAT ST. JAMES STREET,

(Nearly opposite Ottawa Hotel.)

AND

202 NOTRE DAME STREET,

(Three doors from French Church.)

A CALL RESPECTFULLY SOLICITED.

Strangers to the city will find a most complete stock of everything in our line.

THE UNIVERSITY OF CHICAGO
LIBRARY

Carp

Entran

HO

A

JOS.

THOMAS MUSSEN

HAS REMOVED TO

214 CRAIG STREET,

Two doors west of St. Lambert Hill and St. Lawrence Main Street.

A LARGE ASSORTMENT OF

**Carpetings, Rugs, Druggets, Floor Cloths, Reps, Damasks, and
Curtain Trimmings, British and French Goods**

ALWAYS ON HAND,

WHOLESALE AND RETAIL.

DRY GOODS DEPARTMENT UP-STAIRS.

Entrance by Craig Street and Fortification Lane, second door west from St. Lambert Hill.

GEO. HAGAR & CO.,

520 and 522 ST. PAUL STREET,

DEALERS IN

HOUSE FURNISHING HARDWARE,

IMPROVED COOKING STOVES,

AMERICAN GRATES AND FENDERS,

REGISTERS, VENTILATORS,

ALSO,

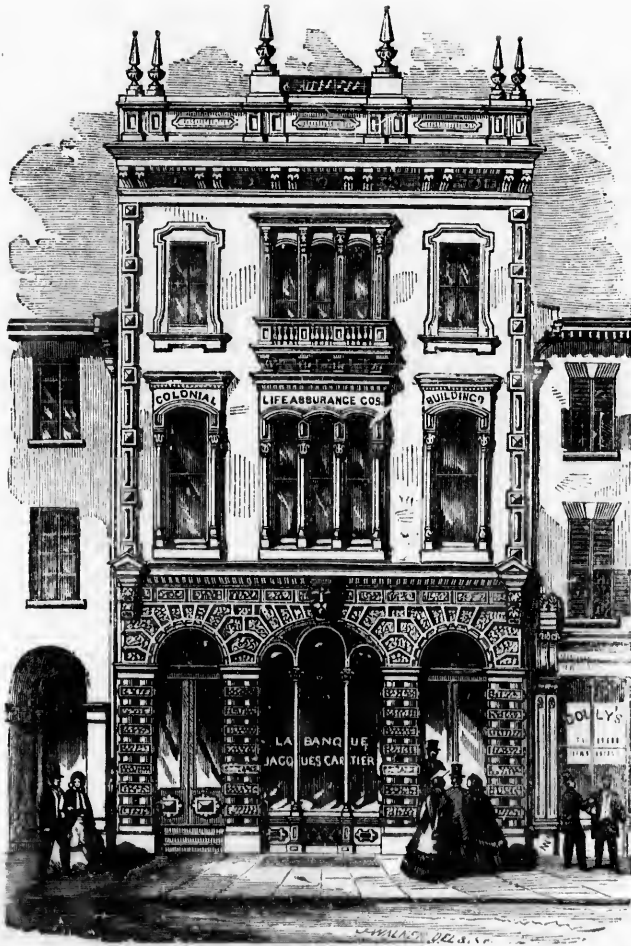
JOS. RODGERS & SONS' CELEBRATED KNIVES AND SCISSORS,

CLUB SKATES,

&c.,

&c.,

&c.



THE COLONIAL LIFE ASSURANCE COMPANY.

CAPITAL - - - ONE MILLION POUNDS STERLING.

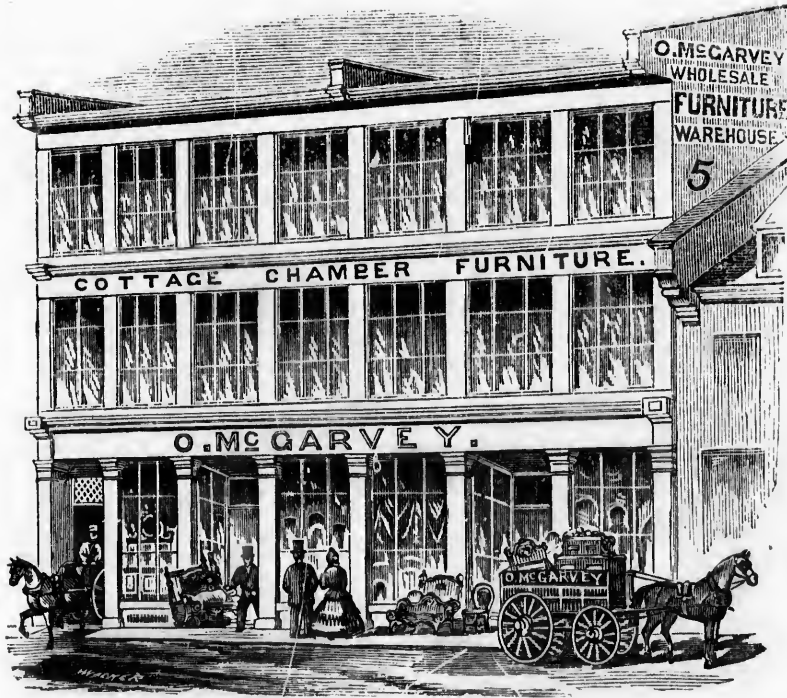
HEAD OFFICE - - - - - EDINBURGH.

HEAD OFFICE FOR CANADA - - - - - MONTREAL.

Manager - - - **W. M. RAMSAY.** | *Inspector* - - - **RICHARD BULL.**

MODERATE RATES OF PREMIUM.

Large profits have been divided amongst the assured—as an example: a Policy for £1000 opened in 1847 is now increased by Profits to £1,310



MANUFACTURER AND WHOLESALE AND RETAIL DEALER IN

EVERY STYLE OF

PLAIN AND FANCY FURNITURE,

Nos. 7, 9 & 11 St. Joseph Street,

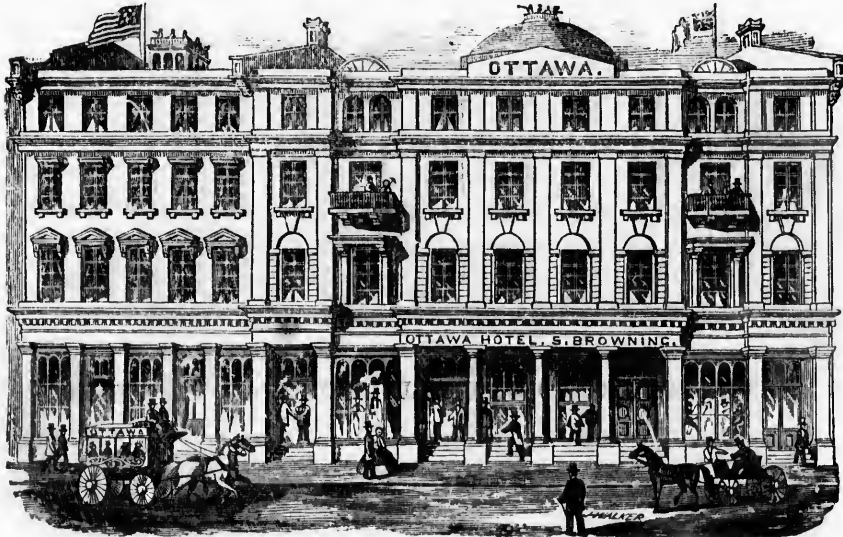
(Second door from McGill Street.)

MONTREAL.

OTTAWA HOTEL

Great St. James Street,

MONTREAL.



This Hotel offers superior attractions to the man of business or the pleasure seeker. During the past winter it has been considerably enlarged and improved; and is now capable of accommodating comfortably two hundred guests. The rooms are light, lofty and airy. The excellent arrangements and regulations of the House render it decidedly one of the most agreeable Hotels in Canada. The assistants have the advantage of large experience, and second effectively the endeavors of the proprietor to make the OTTAWA A HOME to the traveller.

SAMUEL BROWNING,

PROPRIETOR.

Photo
THE
Stopp
PR
A Th
o'clock
passing
Carill
How
arriv
The
of the
Part
valid f
Pass
PAB
Part
Office
Hotel,

J. INGLIS



PHOTOGRAPHER

No. 1 BLEURY AND 663 CRAIG STREETS,
MONTREAL.

Photographs in every style of the art. Copies enlarged from small ones to any size, and finished as may be desired. Orders executed promptly.
Travellers are invited to look through his extensive Rooms.

THE OTTAWA RIVER NAVIGATION COMPANY'S MAIL STEAMERS.

MONTREAL TO OTTAWA CITY, DAILY, (Sundays excepted),

Stopping at St. Anns, Como, Hudson, Point-aux-Anglais, Rigaud, Carillon, Point Fortune, Grenville, L'Original, Major's, Brown's, O'Brien's, Thurso, Buckingham.
The Splendid New Fast Sailing Steamers.

PRINCE OF WALES,

Capt. H. W. SHEPHERD.



QUEEN VICTORIA,

Capt. A. BOWIE.

A Train leaves the Bonaventure Street Depot every Morning (Sundays excepted) at SEVEN o'clock, to connect at Lachine with the Steamer "Prince of Wales." (Breakfast) for Carillon, passing through Lake St. Louis, St. Ann's Rapids, and Lake of Two Mountains. From Carillon, by Railroad to Grenville, join the Steamer "Victoria." (Dinner) for Ottawa City. Downward the Steamer "Queen Victoria" leaves Ottawa City at 6.30 A.M., passengers arriving at Montreal at 4.30 P.M.

The comfort and economy of his Line is unsurpassed, while the Route passes through one of the most picturesque districts in Canada, and is the most fashionable for Tourists. Parties desirous of a pleasant trip can obtain Return Tickets from Montreal to Carillon, valid for one day, at single fares.

Passengers for the celebrated Caledonian Springs will be landed at L'Original.

PARCEL EXPRESS daily from the Office to Ottawa and intermediate landings.

Further information, as well as Return and Excursion Tickets, may be obtained at the Office 153 GREAT ST. JAMES STREET, next door to the American Church, (opposite the Ottawa Hotel,) at the Bonaventure Depot, or on board the Steamers.

R. W. SHEPHERD.



er. During
le of accom-
The excel-
st agreeable
and second
eller.

JAMES RUTHVEN,
PAPER RULER, ACCOUNT BOOK MANUFACTURER,
AND GENERAL BOOKBINDER.

Orders for Bill Heads, Bills of Lading, Bills of Exchange, Promissory Notes, Receipt Books, Letter Books, Invoice Books, Scrap-Books, &c., &c., executed with promptitude and at low prices.

No. 445 St. Paul Street,
MONTREAL.

JOHN PARSLow,
STATIONER AND ACCOUNT BOOK MANUFACTURER,
442 ST. PAUL STREET,
MONTREAL.

Having increased facilities for Bookbinding, under my own supervision, work can be done in a superior manner and at moderate prices.

GLASGOW DRUG HALL,
(New No.) 396 NOTRE DAME STREET WEST.

The subscriber would respectfully call the attention of the public to his well assorted stock of Genuine Drugs and Medicines, English, French, and American Perfumery, Hair, Tooth, and Nail Brushes, Combs, &c., &c.

Sole Agent for the celebrated St. Leon Mineral Water.

Concentrated Lye, Horsford's American Yeast Powder, Cooper's Vegetable Worm Lozenges, Coal Oil, Burning Fluid, &c., Wholesale and Retail.

J. A. HARTE, Druggist.

WESTERN ASSURANCE COMPANY

Established 1851.

FIRE AND MARINE INSURANCES.

PRESIDENT—GEORGE MICHIE, Esq. — VICE-PRESIDENT—HON. J. McMURRICH

MONTREAL BRANCH:

Office: 32 St. Francois Xavier Street.

JAMES GRANT, Agent.

MONTR
 MONTR
 MONTR
 advan
 The
 Tri-W

M

The
 comm
 mach
 The
 enable
 Any
 ward

MONTREAL GAZETTE.

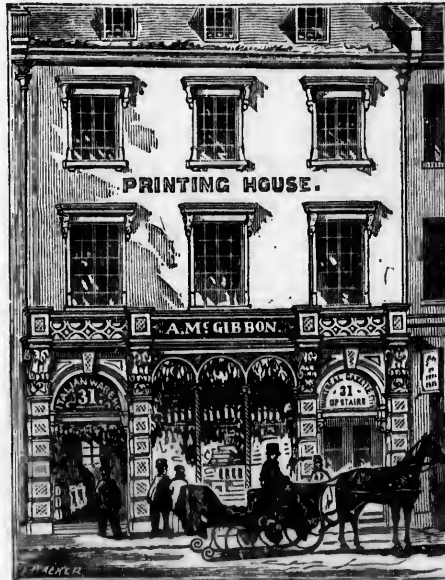
MONTREAL GAZETTE, Daily, - \$8.00 a yr. | MONTREAL GAZETTE, in clubs of 5 \$1.00 a yr.
 MONTREAL GAZETTE, Tri-Weekly, 4.00 " | CANADIAN MAIL - - - - - 2.25 "
 MONTREAL GAZETTE, Weekly, - 1.25 " | Ditto, in advance, - 2.00 "

The DAILY GAZETTE will be furnished to subscribers in the city who pay in advance for \$7 a year; and to advance subscribers in the country for \$6 a year.

The TRI-WEEKLY GAZETTE to the same for \$3.50 and \$3 respectively.

All new advertisements inserted in the Daily will also be inserted in the Tri-Weekly without extra charge.

LOWE & CHAMBERLIN, Proprietors,
 PRINTING HOUSE,
 67 Great St. James Street.



Montreal Gazette Job Printing Office.

The subscribers, since their removal to their new and much more extensive and commodious premises, have been enabled to make great additions to their printing machinery and stock of type.

They have now FIVE STEAM PRINTING besides other kinds of PRESSES, which enable them to strike off a very large number of impressions, with the greatest despatch.

Any orders sent by mail from the country will be promptly attended to, and forwarded by mail or express.

M. LONGMOORE & CO.,
 PRINTING HOUSE,
 67 Great St. James Street.

STRANGERS

VISITING

MONTREAL

WHO MAY BE DESIROUS OF TAKING AWAY WITH THEM A

PICTURE OF THE CITY

CAN PROCURE COPIES AT THE

VARIOUS BOOK STORES.

The view is taken from a commanding position on the Mountain, shows the position of the Victoria Bridge, and is the largest and best executed Engraving ever produced in Canada.

PRICE 12½ AND 37½ CENTS.

To

D

Ca

Wh
Rail
Coll

SAVAGE & LYMAN, **CATHEDRAL BLOCK,**

Have for sale a large and select stock of Fine

ENGLISH AND SWISS GOLD WATCHES

ALSO

**FINE GOLD JEWELLERY OF THE LATEST EUROPEAN STYLES,
MANTLE CLOCKS,**

**Silver and Electro-plated Ware, Papier Mache Ware, Tourist,
Field and Opera Glasses, Ladies' and Gentlemen's
Dressing Cases and Bags,**

AND A VARIETY OF FANCY GOODS,

ALSO,

MILITARY GOODS,

WHITWORTH, HAY, KERR, AND ENFIELD RIFLES,

To the inspection of which they respectfully invite Tourists visiting the City.

WM. BENNET & CO., BOOKSELLERS & STATIONERS

27 GREAT ST. JAMES STREET,

Opposite the Post Office.

Carte de Visite of Montreal and vicinity, and all eminent personages. Stereoscopic Views of Victoria Bridge, Montreal, Quebec, Kingston, Ottawa, Toronto, Hamilton, Niagara Falls, &c., &c. Note Paper and Envelopes to match in great variety. Guides, Maps, School Books, &c.

ST. LAWRENCE HALL.

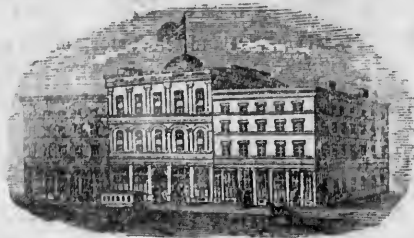
In connection with the above Hotel and in the building is a

NEWS DEPOT AND LENDING LIBRARY,

Where Strangers can obtain Montreal, Toronto, and New York Daily Papers, latest Railway Reading, Views of Canada, Guide Books of Canada and United States, Collection of rare and Valuable Books and Coins, &c., &c.

GEO. WEBB.

ST. LAWRENCE HALL



**GREAT ST. JAMES STREET,
MONTREAL.**

H. HOGAN - - - PROPRIETOR.

THIS FIRST CLASS HOTEL,

Which has been under the management of its proprietor since its opening in eighteen hundred and fifty-one, and is the largest in Montreal, is situated on **GREAT ST. JAMES STREET**, opposite the Post Office, and adjacent to the French Cathedral, or Church Ville-Marie, the Grey and Black Nunneries, Court House, Champ de Mars, Banks, Mechanics' Institute, Nelson's Monument, Canadian Institute, City Hall, and Fashionable Stores, thus rendering it desirable for both

BUSINESS AND PLEASURE TRAVELLERS.

THE THEATRE ROYAL

Is immediately in rear of the Hotel, and one of the best Boxes is regularly reserved for the Guests of the St. Lawrence Hall.

NOTICE.

For the convenience of Guests staying at the St. Lawrence Hall, there has been established two Branch Telegraph Offices connecting with all parts of the United States and Canada.

