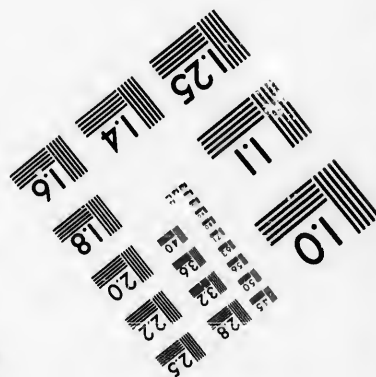
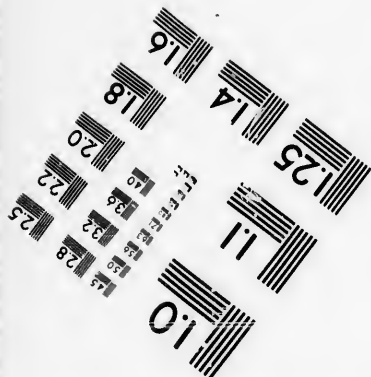
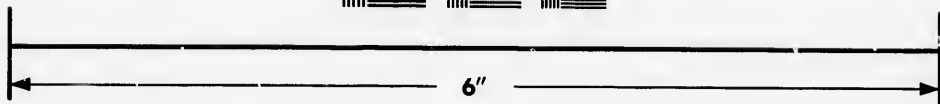
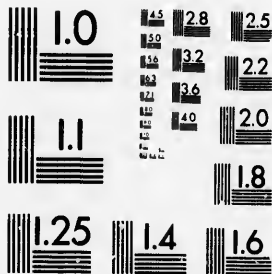


**IMAGE EVALUATION  
TEST TARGET (MT-3)**



**Photographic  
Sciences  
Corporation**

23 WEST MAIN STREET  
WEBSTER, N. Y. 14580  
(716) 872-4503



**CIHM/ICMH  
Microfiche  
Series.**

**CIHM/ICMH  
Collection de  
microfiches.**



Canadian Institute for Historical Microreproductions / Institut canadien de microreproductions historiques



**© 1987**

Technical and Bibliographic Notes/Notes techniques et bibliographiques

The Institute has attempted to obtain the best original copy available for filming. Features of this copy which may be bibliographically unique, which may alter any of the images in the reproduction, or which may significantly change the usual method of filming, are checked below.

L'Institut a microfilmé le meilleur exemplaire qu'il lui a été possible de se procurer. Les détails de cet exemplaire qui sont peut-être uniques du point de vue bibliographique, qui peuvent modifier une image reproduite, ou qui peuvent exiger une modification dans la méthode normale de filmage sont indiqués ci-dessous.

- |  |  |
|--|--|
| <input type="checkbox"/> Coloured covers/<br>Couverture de couleur   | <input type="checkbox"/> Coloured pages/<br>Pages de couleur   |
| <input type="checkbox"/> Covers damaged/<br>Couverture endommagée  | <input checked="" type="checkbox"/> Pages damaged/<br>Pages endommagées  |
| <input type="checkbox"/> Covers restored and/or laminated/<br>Couverture restaurée et/ou pelliculée  | <input type="checkbox"/> Pages restored and/or laminated/<br>Pages restaurées et/ou pelliculées  |
| <input type="checkbox"/> Cover title missing/<br>Le titre de couverture manque   | <input checked="" type="checkbox"/> Pages discoloured, stained or foxed/<br>Pages décolorées, tachetées ou piquées   |
| <input type="checkbox"/> Coloured maps/<br>Cartes géographiques en couleur   | <input type="checkbox"/> Pages detached/<br>Pages détachées  |
| <input checked="" type="checkbox"/> Coloured ink (i.e. other than blue or black)/<br>Encre de couleur (i.e. autre que bleue ou noire)  | <input checked="" type="checkbox"/> Showthrough/<br>Transparence   |
| <input type="checkbox"/> Coloured plates and/or illustrations/<br>Planches et/ou illustrations en couleur  | <input type="checkbox"/> Quality of print varies/<br>Qualité inégale de l'impression   |
| <input type="checkbox"/> Bound with other material/<br>Relié avec d'autres documents   | <input type="checkbox"/> Includes supplementary material/<br>Comprend du matériel supplémentaire   |
| <input type="checkbox"/> Tight binding may cause shadows or distortion<br>along interior margin/<br>La reliure serrée peut causer de l'ombre ou de la<br>distorsion le long de la marge intérieure   | <input type="checkbox"/> Only edition available/<br>Seule édition disponible   |
| <input type="checkbox"/> Blank leaves added during restoration may<br>appear within the text. Whenever possible, these<br>have been omitted from filming/<br>Il se peut que certaines pages blanches ajoutées<br>lors d'une restauration apparaissent dans le texte,<br>mais, lorsque cela était possible, ces pages n'ont<br>pas été filmées. | <input type="checkbox"/> Pages wholly or partially obscured by errata<br>slips, tissues, etc., have been refilmed to<br>ensure the best possible image/<br>Les pages totalement ou partiellement<br>obscurcies par un feuillet d'errata, une pelure,<br>etc., ont été filmées à nouveau de façon à<br>obtenir la meilleure image possible. |
| <input checked="" type="checkbox"/> Additional comments:/<br>Commentaires supplémentaires:   | [Printed ephemera] [4] p.  |

This item is filmed at the reduction ratio checked below/  
Ce document est filmé au taux de réduction indiqué ci-dessous.

10X	14X	18X	22X	26X	30X
<input type="checkbox"/>	<input type="checkbox"/>	<input type="checkbox"/>	<input checked="" type="checkbox"/>	<input type="checkbox"/>	<input type="checkbox"/>
12X	16X	20X	24X	28X	32X

The copy filmed here has been reproduced thanks to the generosity of:

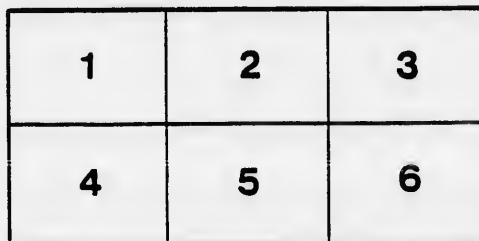
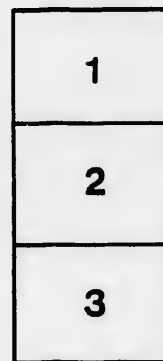
D. B. Weldon Library  
University of Western Ontario  
(Regional History Room)

The images appearing here are the best quality possible considering the condition and legibility of the original copy and in keeping with the filming contract specifications.

Original copies in printed paper covers are filmed beginning with the front cover and ending on the last page with a printed or illustrated impression, or the back cover when appropriate. All other original copies are filmed beginning on the first page with a printed or illustrated impression, and ending on the last page with a printed or illustrated impression.

The last recorded frame on each microfiche shall contain the symbol  $\rightarrow$  (meaning "CONTINUED"), or the symbol  $\nabla$  (meaning "END"), whichever applies.

Maps, plates, charts, etc., may be filmed at different reduction ratios. Those too large to be entirely included in one exposure are filmed beginning in the upper left hand corner, left to right and top to bottom, as many frames as required. The following diagrams illustrate the method:



L'exemplaire filmé fut reproduit grâce à la générosité de:

D. B. Weldon Library  
University of Western Ontario  
(Regional History Room)

Les images suivantes ont été reproduites avec le plus grand soin, compte tenu de la condition et de la netteté de l'exemplaire filmé, et en conformité avec les conditions du contrat de filmage.

Les exemplaires originaux dont la couverture en papier est imprimée sont filmés en commençant par le premier plat et en terminant soit par la dernière page qui comporte une empreinte d'impression ou d'illustration, soit par le second plat, selon le cas. Tous les autres exemplaires originaux sont filmés en commençant par la première page qui comporte une empreinte d'impression ou d'illustration et en terminant par la dernière page qui comporte une telle empreinte.

Un des symboles suivants apparaîtra sur la dernière image de chaque microfiche, selon le cas: le symbole  $\rightarrow$  signifie "A SUIVRE", le symbole  $\nabla$  signifie "FIN".

Les cartes, planches, tableaux, etc., peuvent être filmés à des taux de réduction différents. Lorsque le document est trop grand pour être reproduit en un seul cliché, il est filmé à partir de l'angle supérieur gauche, de gauche à droite, et de haut en bas, en prenant le nombre d'images nécessaire. Les diagrammes suivants illustrent la méthode.

ails  
du  
odifier  
une  
mage

rrata  
to

pelure.  
n à

32X

# MUSIC HALL!

*Tuesday & Wednesday Ev'g's., Oct. 8 & 9.*

## ROSA D'ERINA

ERIN'S PRIMA DONNA

Vocalist by command to the Prince and Princess of Wales and the Irish Court; Executante of the Music of Ireland at the Dublin and Paris Expositions; Pupil of the Imperial School of Music, Paris, and of Monsieur Duprez.



The Management has the honor to announce that the above distinguished ARTISTE, will appear in her celebrated unique, original, and classical

### MUSICAL EVENINGS,

ILLUSTRATING

## The Music of Many Lands

France, Italy, Germany and Spain; England, Ireland, Scotland and America, introducing the Sacred, Classic and Operatic Compositions of Haydn, Handel, Rossini, Gounod, Mozart, Beethoven, and Meyerbeer, with Moore's Immortal Melodies and Lover's inimitable Serio-Comic Songs.

ADMISSION, 50 CTS. RESERVED SEATS, 75 CTS.

Tickets on sale at N. Decker's Music Store, 115 Broadway, N.Y.

PART J.

**Sacred, Classic and Operatic Selections**

INTRODUCTION

Sacred Music ; its antiquity and heavenly influence in Divine worship ; the great sacred composers, Haydn, Handel, Beethoven, Mozart and Cherubini.

ILLUSTRATION

SACRED SOLO. "Ave Maria," .....CHERUBINI

INTRODUCTION

Classic Music ; its distinctive character ; musical culture ; progressive taste ; Wallace as a composer.

ILLUSTRATION

CLASSIC SONG. "Sweet Spirit hear my prayer," ..... WALLACE

INTRODUCTION

Musical instinct ; accuracy of perception ; the Blind Asylum at Liverpool ; anecdotes

ILLUSTRATION

SOLO PIANOFORTE. "Irish Airs," (new) .....arranged by ROSA D'ERINA

INTRODUCTION

The French School of Music ; experiences of Paris ; the Empress ; the Tuileries ; the Conservatoire ; Duprez, the great *maestro* ; the operatic stage.

ILLUSTRATION

GRAND FRENCH SCENA. "Le départ de Jeanne d'Arc," .....BORDÈSE

INTRODUCTION

The Paris Exposition ; its splendor and magnificence ; its various courts and streets representing the world ; the great French organ ; close of the Exposition.

ILLUSTRATION

SOLO. "Grand Triumphant March," .....ROSA D'ERINA

INTRODUCTION

Italy the Land of Song, Italian Composers ; Rossini, Verdi, Donizetti and Arditì.

ILLUSTRATION

ITALIAN VALSE. Brillante, "L'Ardisson," .....

gaiety ; the country ; conversation ; anecdote.

INTRODUCTION

SPANISH HOUSING. "La Calasera," .....YRADIER

INTERVAL OF TEN MINUTES

PHOTOGRAPHS OF ROSA D'ERINA:—Cabinet Size, 25 Cents,

PART II.

**English, Irish, Scotch and American Ballads**

INTRODUCTION

The Music of England ; her composers ; the past and present ; her home songs ; their immense popularity ; the love of home ; Claribel as a composer.

ILLUSTRATION

ENGLISH BALLAD. "Five o'clock in the Morning,"..... CLARIBEL  
SOLO PIANO FORTE. "Galope de Concert,"..... ROSA D'ERINA

INTRODUCTION

Ireland ; her music and poetry, her bards and minstrels, their antiquity ; Moore, the "Poet of all circles," his Melodies ; the Princess of Wales' opinion of them ; their world-wide fame.

ILLUSTRATION

IRISH MELODY. "The Minstrel Boy," ..... MCORE  
ORGAN SOLO. "Irish Airs,".... ..... ROSA D'ERINA  
(Introducing "The Shamrock," "Patrick's Day," and "Brian's March.")

INTRODUCTION

Scotland ; famous for her ballad literature ; the Jacobite ballads ; the house of Stuart, Burns, and Allen Ramsey.

ILLUSTRATION

SCOTCH BALLAD. "Comin' thro' the Rye," ..... BURNS

INTRODUCTION

The Serio-Comic Muse ; how it drives away "dull care," the high and low styles of comic songs ; Samuel Lover's freedom from vulgarity in all his compositions ; sparkling with wit and genius ; the poet, composer, painter and novelist ; Mr. and Mrs. S. C. Hall ; literary and musical celebrities of London ; a young artist's experience there ; John Parry.

ILLUSTRATION

ENGLISH SERIO-COMIC BALLAD. "Courting's very charming,"...PARRY  
IRISH SERIO-COMIC BALLAD. "That Rogue Riley," .....LOVER

**ROSA D'ERINA in her "MUSIC of MANY LANDS,"**

Published by OLIVER DITSON & CO., Boston. PRICE: 50 CENTS EACH,  
TO BE HAD IN THE HALL.

FRANCIS SCENA. "Le départ de Jeanne d'Arc," ..... Bordèse

ENGLISH SERIO-COMIC BALLAD. "Courting's very charming," John Parry

IRISH SERIO-COMIC BALLAD. "That Rogue Riley," ..... Yradier



# Opinions of the French, English, Irish and American Press.

## PARIS

It is in America we shall hear of the rising of this great Lyric Star, where her talents will find true recognition, and her simplicity of manner win all hearts.—*La Patrie*.

Rosa D'Erina sings Irish Melodies with that Milesian fervor, which, as Byron used to say, "would set Tom Moore, though married, raving."—*Galignani*.

The charming young *artiste* has a splendid voice of great power and compass, and at her grand concert last night, patronized by the English and American Ambassadors, sang in seven languages with complete success.—*L'Art Musical*.

Sweden has produced two great cantatrices, Jenny Lind and M'lle Nilsson. Ireland is jealous of Sweden, and has flashed to us a star, M'lle Rosa D'Erina.—*Le temps*.

Rosa D'Erina is a distinguished cantatrice. She has the voice, the taste, the tradition, a style the most correct, and a soul essentially musical.—*L'igaro*.

Thanks to the accomplished young *artiste*, M'lle D'Erina, for taking down "The Harp that once in Tara's Halls," used to reflect such glory on the poets and bards of Erin.—*Journal des Débats*.

## DUBLIN

Rosa D'Erina has attained the highest position among the vocalists, and is everywhere regarded as the most living interpreter of the magic music of her native land.—*Freeman*.

We are sure that all who love genuine song will hasten to greet back to Erin one of its daughters who has upheld its name and fame for genius in foreign lands.—*Irish Times*.

We welcome with *caed maille failha* the Rose of Erin, who, in the capitals of France and England, has made the music of Ireland celebrated, and reflected by her genius much honor on Ireland.—*The Nation*.

Rosa D'Erina has given upwards of one hundred recitals of the music of Ireland, in the great Paris Exposition, to thousands of delighted hearers, and the Paris Press teems with her praises.—*Evening Post*.

The voice of Erin will, by her magnificent Musical Evenings, reflect honor on her native land, and also cheer the heart of any an exile from Erin.—*Irishman*.

## BOSTON

This lady, who comes with such glowing commendations from the press of both Europe and America, sang herself immediately into favor with a large audience last evening, and may count upon another success to add to the many upon her list. Her voice is one of the most agreeable that has been heard here.—*Boston Post*.

Rosa D'Erina has given a series of concerts at Tremont Temple to large and enthusiastic audiences. She has a very agreeable stage presence, her voice is clear and sweet and pleasing in the highest degree. Her versatility is really remarkable, and she renders her entire difficult programme in an artistic manner.—*Dexter Smith's Papers*.

This talented and versatile young lady has already sung herself into the admiring appreciation of our exacting audiences. She is every day carrying her way through the "high and dry" classic music of our cultivated metropolis to the appreciation and varied tastes of our popular classes, and truly admiringly admires the musical atmosphere of the city.

## LONDON

M'lle Rosa D'Erina had the honor of singing, by gracious command of her Royal Highness the Princess of Wales, at Marlborough House, yesterday, in presence of a distinguished circle.—*Star*.

Rosa D'Erina has the most extraordinary facility of vocalization, for whether in French, Italian or Spanish music, she is equally happy, whilst her Irish Melodies are truly superb.—*Era*.

No Irish *artiste* since Catherine Hayes has created in the musical world such a sensation as the accomplished and highly-gifted young lady, M'lle Rosa D'Erina.—*Musical Times*.

Rosa d'Erina's singing of Spanish ballads, at the Royal Gallery of Illustration, has not been equalled since the days of Viradot Garcia. The Spanish Hunting Song is immense.—*Telegraph*.

A most brilliant assemblage greeted the Rose of Erin at her benefit concert last night. Ireland has good reason to be proud of this gifted child of song.—*Morning Advertiser*.

Rosa d'Erina has won all hearts by her exquisite rendering of the delightful music of her native land. She is truly marvellous in her repertoire of "Music from many Lands."—*Times*.

## NEW-YORK

Rosa d'Erina is a splendid vocalist, of the most varied talents, and was welcomed last night by one of the largest audiences ever assembled in Steinway Hall.—*Herald*.

The Irish prima donna made her *debut* last evening at Steinway Hall, before a crowded and enthusiastic audience, and exhibited rare powers of vocalization.—*Tribune*.

Rosa d'Erina possesses a splendid mezzo-soprano voice, cultivated to the highest degree in the Parisian school. Her varied programme proved her a marvel in linguistic attainments.—*Star*.

## ST. LOUIS

The Mayor and citizens of St. Louis assembled last evening to honor Rosa D'Erina's farewell appearance. Rarely have we witnessed a more respectable and appreciative audience. A pleasing incident occurred between the parts of the programme. As M'lle D'Erina was about to retire Mr. Butler, one of the editors of *The Dispatch*, ascended to the stage and presented her, in the name of her many friends, with a very handsome and valuable gold Etuscan cross and chain, inlaid with pearls.—*Dispatch*, June 14, 1871.

The performance of the Rose of Erin at the Mercantile Library, during the week, have been a series of artistic triumphs. No artist has visited this city for years who combines in so eminent a manner the rare musical gifts of Rosa D'Erina.—*Times*.

We feel bound to express the pleasure shared in by thousands of our citizens during M'lle D'Erina's "Musical Evenings." We cannot imagine any more excellent means of spending an evening than in listening to this accomplished musician, who is perfectly at home in the "Music of Many Lands."—*Republican*.

## CHICAGO

Rosa D'Erina has established herself in the most cordial and friendly relations toward the Chicago public, and it is not difficult to foresee that her sterling accomplishments, voice and method, will win for her a most brilliant career.—*Tribune*.

M'lle D'Erina proves to be a beautiful young Irish woman. She is natural and artless in manner; the owner of a rich and true voice, and has a stage presence that for a paradoxical combination of unaffected diffidence and complete self-possession is a model.—*Times*.

M'lle D'Erina's first appearance upon the concert stage of Chicago is a success fully deserved by her great musical abilities, and accorded without feigning. Her performance, so long without a representative in the musical world, has given our country a reason to be proud of her noble talents.—*Past*.



