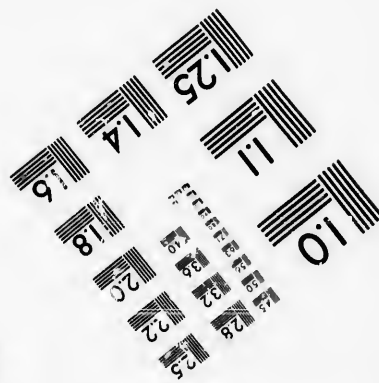
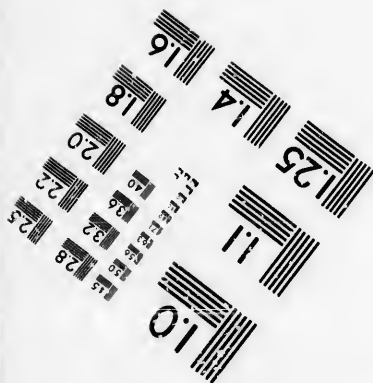
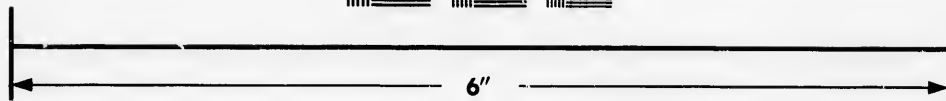
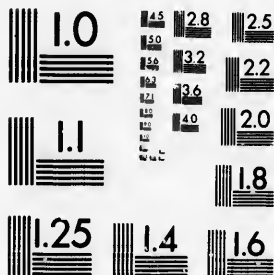


**IMAGE EVALUATION  
TEST TARGET (MT-3)**



**Photographic  
Sciences  
Corporation**

23 WEST MAIN STREET  
WEBSTER, N.Y. 14580  
(716) 872-4503

**CIHM/ICMH  
Microfiche  
Series.**

**CIHM/ICMH  
Collection de  
microfiches.**



Canadian Institute for Historical Microreproductions / Institut canadien de microreproductions historiques

**© 1986**



The copy filmed here has been reproduced thanks to the generosity of:

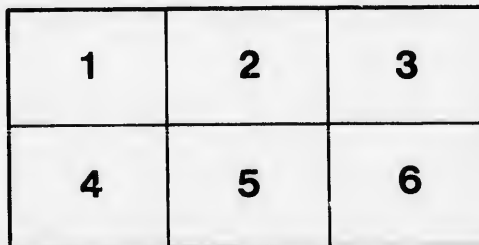
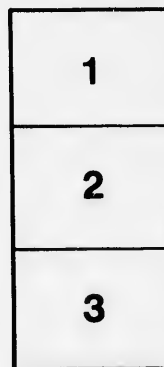
Douglas Library  
Queen's University

The images appearing here are the best quality possible considering the condition and legibility of the original copy and in keeping with the filming contract specifications.

Original copies in printed paper covers are filmed beginning with the front cover and ending on the last page with a printed or illustrated impression, or the back cover when appropriate. All other original copies are filmed beginning on the first page with a printed or illustrated impression, and ending on the last page with a printed or illustrated impression.

The last recorded frame on each microfiche shall contain the symbol  $\rightarrow$  (meaning "CONTINUED"), or the symbol  $\nabla$  (meaning "END"), whichever applies.

Maps, plates, charts, etc., may be filmed at different reduction ratios. Those too large to be entirely included in one exposure are filmed beginning in the upper left hand corner, left to right and top to bottom, as many frames as required. The following diagrams illustrate the method:



L'exemplaire filmé fut reproduit grâce à la générosité de:

Douglas Library  
Queen's University

Les images suivantes ont été reproduites avec le plus grand soin, compte tenu de la condition et de la netteté de l'exemplaire filmé, et en conformité avec les conditions du contrat de filmage.

Les exemplaires originaux dont la couverture en papier est imprimée sont filmés en commençant par le premier plat et en terminant soit par la dernière page qui comporte une empreinte d'impression ou d'illustration, soit par le second plat, selon le cas. Tous les autres exemplaires originaux sont filmés en commençant par la première page qui comporte une empreinte d'impression ou d'illustration et en terminant par la dernière page qui comporte une telle empreinte.

Un des symboles suivants apparaîtra sur la dernière image de chaque microfiche, selon le cas: le symbole  $\rightarrow$  signifie "A SUIVRE", le symbole  $\nabla$  signifie "FIN".

Les cartes, planches, tableaux, etc., peuvent être filmés à des taux de réduction différents. Lorsque le document est trop grand pour être reproduit en un seul cliché, il est filmé à partir de l'angle supérieur gauche, de gauche à droite, et de haut en bas, en prenant le nombre d'images nécessaire. Les diagrammes suivants illustrent la méthode.

**HANDBOOK**  
—OF—  
**CANADIAN**  
**EXCURSION TOURS**

VIA  
**GRAND TRUNK RAILWAY**  
AND  
**RICHELIEU & ONTARIO NAVIGATION CO.**

RATES OF FARE FOR SEASON OF

**1882.**

TICKETS AND INFORMATION MAY BE OBTAINED AT  
**No. 280 WASHINGTON STREET.**  
**BOSTON, MASS.**

**J. STEPHENSON,**  
GEN'L PASS. AGENT G. T. RY.,  
MONTREAL.

**W. C. TALLMAN,**  
NEW ENGLAND AGENT,  
BOSTON.

**ALEX. MILLOY,** TRAFFIC MANAGER R. & O. N. CO.,  
MONTREAL.

# FROM BOSTON.

## TOURISTS' TICKETS

VIA

New York

Philadelphia

Hudson River

Niagara Falls

Toronto

Lake Ontario

River St. Lawrence with its

Rapids and Thousand Islands

Montreal

Quebec

River Saguenay

Lake Champlain

Lake George

Saratoga

White Mountains

Profile House

Crawford House

Glen House

Summit Mt. Washington

Lake Winnipiseogee

Lake Umbagog and the

Rangeley Lakes.

# THE GRAND TRUNK RAILWAY

IS THE

## GREAT THROUGH ROUTE BETWEEN THE EAST AND WEST.

Fares from BOSTON or PORTLAND to CHICAGO and all points West

**CHEAPER THAN BY ANY OTHER ROUTE.**

**DINING and PALACE CARS**

ARE REGULARLY RUN

**ON ALL EXPRESS TRAINS**

ON THE GRAND TRUNK RAILWAY WEST OF MONTREAL.

March 1880 J. Corbould Gen'l P. 2500

# D TRUN



Mech 180 J. Corbanel Genl HP 2500

## H TICKETS

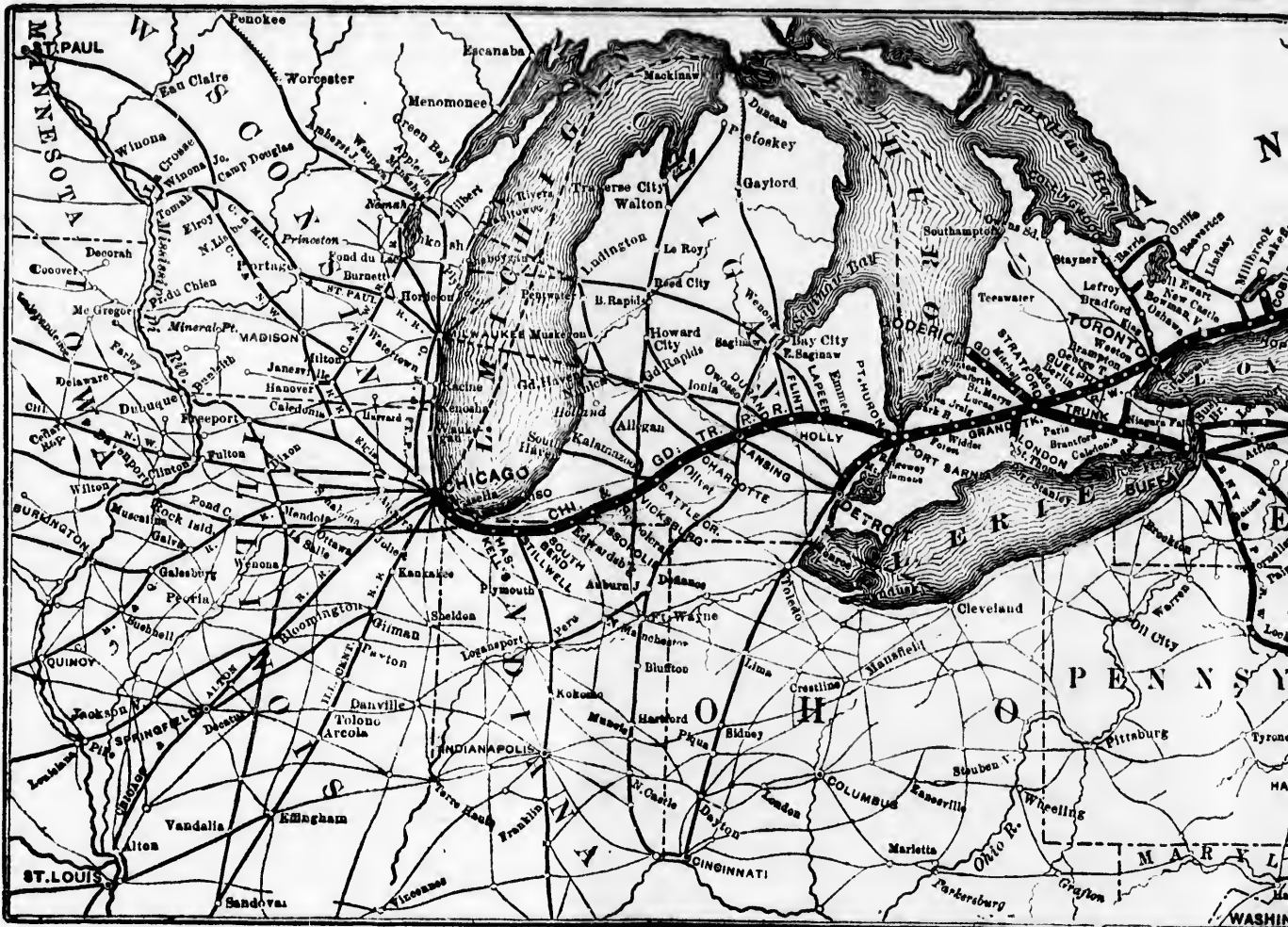
OBTAINED AT 280 WASHINGTON STREET, BOSTON.

New England Agent.

LACHE CARS on all EXE

# GRAND TRUNK

**RATES OF FARE can be supplied to ANY POINTS in the West,  
upon application to this office.**



## THROUGH TICKETS

AND ALL NECESSARY INFORMATION CAN BE OBTAINED AT 280 WASHINGTON STREET, BOSTON.

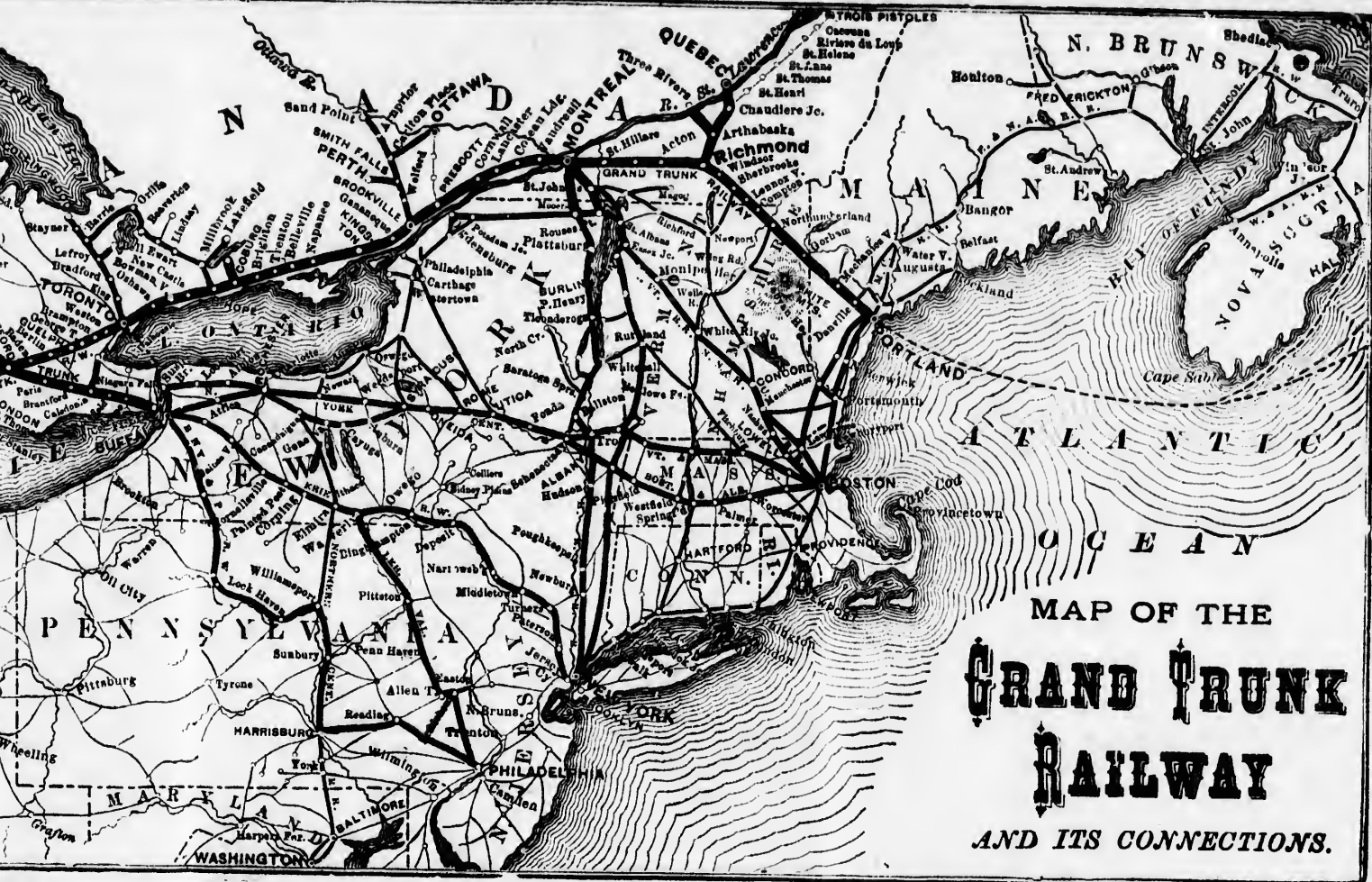
**W. C. TALLMAN, New England Agent.**

DINING AND PALACE CARS on all EXPR.

*Manise J. Corbett Gen'l P. 2500*



# UNION RAILWAY.



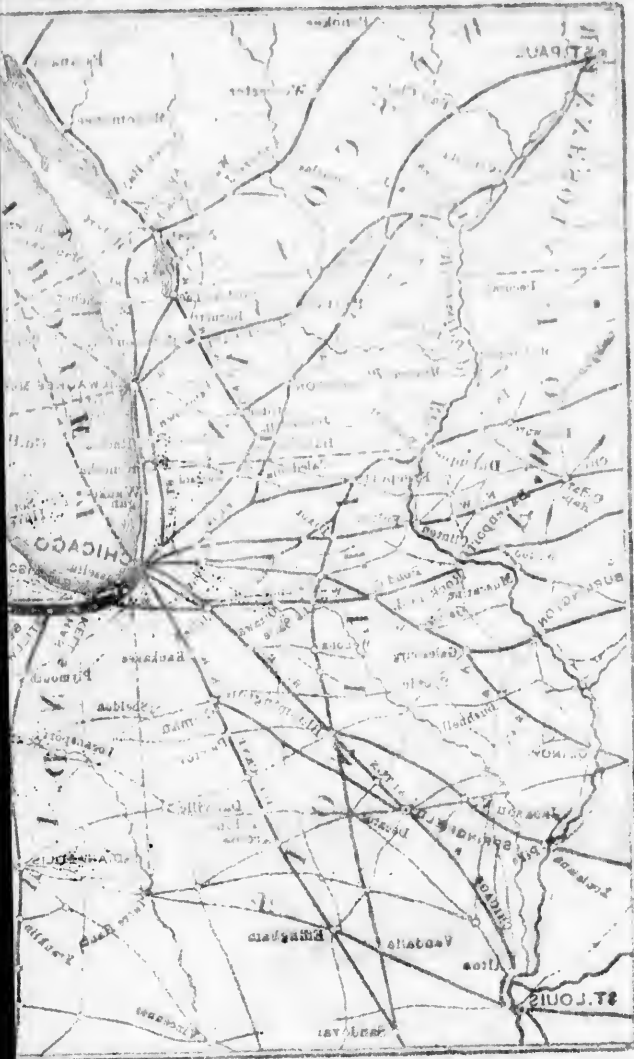
**THE SHORTEST AND MOST DIRECT ROUTE TO ALL POINTS**

**EAST AND WEST.**

TICKETS FOR SALE AT ALL PRINCIPAL TICKET OFFICES IN NEW ENGLAND.

all EXPRESS TRAINS from MONTREAL WEST.

# GRAND



## THROUGH

AND ALL NECESSARY INFORMATION CAN BE

W. C. TAYLOR

## DINING AND PA

UPON APPLICATION TO THIS OFFICE. COUPONS OF VALUE CAN BE OBTAINED IN THE WEST.

# EXC

## Tourist

The Coups Prescott and boat or rail, Ontario Navig Shore Line Toronto can of 60c. to the

Tickets in Montreal, bu The Tick visit the Aus

Agents a Grand Trunk of Steamers before. The and has been Pullman Pal

A Pullma Train from T the season) pa gage checked

Tickets re than about the Day Line and June, and pa Lines cease ru earlier or later

Agents w coupons (N.Y must be made tickets, which

No devia special auth Parties h

routes from N iston, and St to Toronto, ( Railway, or Ontario," the rence," by da

LIST OF  
**EXCURSION ROUTES**

AND  
**RATES OF FARE**

FOR  
**Tourists' Tickets for the Season of 1882.**

---

**TICKETS GOOD UNTIL NOVEMBER 1st.**

---

The Coupons between Toronto and Kingston, Kingston and Prescott, Prescott and Montreal, and Montreal and Quebec, are valid either by boat or rail, and they are likewise good either by the Richelieu and Ontario Navigation Co.'s Line from Toronto, or by that Company's South Shore Line from Charlotte. The Coupons between Niagara Falls and Toronto can be exchanged for All-Rail Tickets, via G. W. R., on payment of 60c. to the Agents at the Falls. (L. Barber, International Block.)

Tickets include meals on Lake Ontario and the River St. Lawrence to Montreal, but between Montreal and Quebec they are for passage only.

The Tickets via Lake Champlain afford Tourists an opportunity to visit the Ausable Chasm. (See Form X No. 96.)

Agents are requested to specially inform the Passengers that the Grand Trunk Railway and Richelieu and Ontario Navigation Co.'s Line of Steamers offer better inducements to the travelling public than ever before. The Grand Trunk Railway has been relaid with Steel Rails, and has been equipped with New Locomotives and First-class Cars. Pullman Palace and Dining Cars are run on all Express Trains.

A Pullman Palace Sleeping Car will be attached to the Evening Train from Toronto, and will run through to Kingston Wharf, (early in the season) passengers can remain in the Car until the Boat arrives. Baggage checked through either by rail or steamer.

Tickets reading over the Mt. Washington R.R. are not available earlier than about the middle of June or after about the 20th of September. The Day Line and Lake George Steamers commence their trips about the 1st of June, and passengers should be reminded that many of the Steamboat Lines cease running, or make irregular trips, after about the 1st of October, earlier or later according to the severity or mildness of the season.

Agents will please notify passengers holding tickets without transfer coupons (N.Y. C. R.R. Depot, Lewiston to the wharf) that application must be made without fail at the Ticket Offices at the Falls for transfer tickets, which will be supplied **Free of Charge.**

**No deviation from the rates given will be allowed without special authority.**

Parties holding our THROUGH EXCURSION TICKETS, have choice of routes from Niagara Falls, viz.: via New York Central Railway to Lewiston, and Steamer to Toronto or Great Western Railway via Hamilton to Toronto, (on payment of 60c.), connecting there with Grand Trunk Railway, or Royal Mail Line of Steamers passing through "Lake Ontario," the "Thousand Islands," and "Rapids of the River St. Lawrence," by daylight, to Ogdensburg or Montreal.

# RATES OF FARE

FROM

## Boston to Niagara Falls

**NOTICE.**—The following rates of fare are given separately from Boston to Niagara Falls and from Niagara Falls to destination. To make the through rate for round trip, both rates must be added.

Via Boston & Albany and N.Y. Central Railways.....	\$11.15
" Fitchburg, Rutland, Saratoga and N.Y. Central Railways....	11.15
" Fitchburg & Hoosac Tunnel Line, and New York Central R.R.,	11.15
" Any All-Rail Route to N.Y. City, Hudson River, and N.Y.C. R'y	15.75
" " " Erie Railway.....	15.75
" Sound Lines to New York, Hudson Riv. & N.Y.C. R.R. or Erie R'y	13.25

### Routes and Rates of Fare from Niagara Falls.

**BOSTON.**

*Form X 11.* Via Toronto, Montreal, Quebec, Gorham and Portland..... **\$23.00**

**BOSTON.**

*Form X 12.* Via Toronto, Montreal, St. Johns, Burlington, Bellows Falls and Fitchburg..... **\$20.00**

**BOSTON.**

*Form X 15.* Via Toronto, Montreal, Gorham and Portland, **\$20.00**

**BOSTON.**

*Form X 16.* Via Toronto, Montreal, St. Johns, White River Junction, Concord and Nashua. .... **\$20.00**

**BOSTON.**

*Form X 17.* Via Toronto, Ogdensburg, St. Albans and Central Vermont Line..... **\$20.00**

**BOSTON.**

*Form X 29.* Via Toronto, Montreal, Rouse's Point, Plattsburg, Lake Champlain to Fort Ticonderoga, thence by R. R. via Saratoga, Rutland, Bellows Falls, and Fitchburg ..... **\$26.00**

**BOSTON.**

*Form X 34.* Via Toronto, Montreal, Rouse's Point, Plattsburg, Lake Champlain, Lake George, Saratoga, Albany, Peoples Line of Steamers to New York, and Sound Steamers to Boston..... **\$28.50**

**Routes and Rates of Fare from Niagara Falls. 3**

**BOSTON.**

*Form X 35.* Via Toronto, Montreal, St. John's, White River Junction, Wells River, Bethlehem Jn., Profile House, Bethlehem Jn., Fabyan House, Crawford House and back to Fabyans, thence via Concord, Nashua, and Lowell..... **\$28.75**

**BOSTON.**

*Form X 38.* Via Toronto, Montreal, Rouse's Point, Plattsburgh, Lake Champlain, Burlington, Bellows Falls, and Fitchburg..... **\$21.75**

**BOSTON.**

*Form X 39.* Via Toronto, Ogdensburg, Moer's Junction, Plattsburgh, Lake Champlain, Burlington, Bellows Falls and Fitchburg..... **\$20.25**

**BOSTON.**

*Form X 136.* Via Toronto, Montreal, Sherbrooke, White River Junction, Concord and Nashua..... **\$20.00**

**BOSTON.**

*Form X 137.* Via Toronto, Montreal, Quebec, Sherbrooke, White River Junction, Concord and Nashua.... **\$23.00**

**BOSTON.**

*Form X 142.* Via Toronto, Montreal, Groveton, Concord and Nashua..... **\$23.00**

**BOSTON.**

*Form X 145.* Via Toronto, Montreal, Quebec, Groveton, Concord and Nashua..... **\$26.00**

**BOSTON.**

*Form X 147.* Via Toronto, Montreal, Groveton, Fabyan House, Bethlehem Jn., Profile House, Bethlehem Jn., thence Rail via Concord and Nashua..... **\$29.00**

**BOSTON.**

*Form X 154.* Via Toronto, Montreal, Gorham (Alpine House), Stages to Glen House and Summit, Summit to Base by Mt. Washington R.R., Base to Fabyan House, Bethlehem Jn., Profile House, Bethlehem J., thence Rail via Concord and Nashua..... **\$38.00**

**BOSTON.**

*Form 2674.* Via Toronto, Montreal, Quebec, Intercolonial Railway to Halifax, St. John, Steamer to Portland, and Rail to Boston..... **\$34.75**

**BOSTON.**

*Form 2675.* Via Toronto, Montreal, Quebec, Intercolonial Railway to Point du Chene, Steamer to Summerside, P. E. I., Rail to Charlottetown, Steamer to Pictou, Rail to Halifax and St. John, Steamer to Portland, and Rail to Boston..... **\$38.75**

**4 Routes and Rates of Fare from Niagara Falls.**

**BOSTON.**

*Form 2910.* Via Toronto, Montreal, St. Johns, St. Albans, Burlington, Lake Champlain, Lake George, Caldwell, Glens Falls, Saratoga, Albany, Day Line Steamer to New York, and Sound Steamer to Boston.. **\$29.00**

**BOSTON.**

*Form 2914.* Via Toronto, Montreal, Quebec, Sherbrooke, Newport, Wells River, Concord, Nashua and Lowell..... **\$24.00**

**BOSTON.**

*Form 2961.* Via Toronto, Montreal, Groveton, Fabyan's, Bethlehem Jn., Profile House, Stage to Plymouth, thence via Concord, Nashua and Lowell..... **\$29.00**

**BOSTON.**

*Form 2962.* Via Toronto, Montreal, Gorham (Alpine House), Stages to Glen House and Summit Mt. Washington, Summit to Base by Mt. Washington R.R., Fabyan's, Bethlehem Jn., Profile House, Stage to Plymouth, thence via Concord, Nashua and Lowell..... **\$38.00**

**BOSTON.**

*Form 3016.* Via Toronto, Montreal, St. Johns, St. Albans, Montpelier, White River Junction, Wells River, Bethlehem Jn., Profile House, Bethlehem Jn., Fabyan's, Crawford House, back to Fabyan's, Wells River, Concord, Nashua and Lowell..... **\$29.50**

**BOSTON.**

*Form 3029.* Via Toronto, Montreal, St. Lambert, Newport, St. Johnsbury, Wells River, Concord, Nashua, and Lowell..... **\$20.00**

**BOSTON.**

*Form 3030.* Via Toronto, Montreal, St. Lambert, Newport, St. Johnsbury, Lunenburg, Bethlehem Jn., Profile House, Stage to Plymouth, Rail to Concord, Nashua, and Lowell..... **\$27.25**

**BOSTON.**

*Form 3031.* Via Toronto, Montreal, St. Lambert, Newport, St. Johnsbury, Lunenburg, Bethlehem Jn., Profile House, Bethlehem Jn., Fabyan's, Summit of Mount Washington, Glen House, Gorham, and Portland..... **\$34.50**

**BOSTON.**

*Form 3032.* Via Toronto, Montreal, St. Lambert, Newport, St. Johnsbury, Lunenburg, Fabyan's, Crawford House, North Conway, and via Eastern R.R..... **\$24.00**

**BOSTON.**

*Form 3056.* Via Toronto, Montreal, Quebec, Sherbrooke, St. Johnsbury, Lunenburg, Scott's, Bethlehem Jn., Profile House, Bethlehem Jn., Fabyan's, Crawford House, Fabyan's, Base of Mt. Washington, Summit, Stage to Glen House and Gorham (Alpine House), Rail via Portland... **\$38.50**

Routes and Rates of Fare from Niagara Falls. 5

**CRAWFORD HOUSE.**

*Form X 49.* Via Toronto, Montreal, St. Johns, White River Junction, Wells River and Fabyan House..... **\$19.70**

**CRAWFORD HOUSE.**

*Form X 50.* Via Toronto, Ogdensburg, St. Albans, White River Junction, Wells River and Fabyan House. **\$19.70**

**CRAWFORD HOUSE.**

*Form X 100.* Via Toronto, Montreal, Gorham (Alpine House), Stages to Glen House and Summit, Mt. Washington, R.R. to Base of Mountain, and Fabyan's..... **\$29.00**

**CRAWFORD HOUSE.**

*Form X 101.* Via Toronto, Montreal, Quebec, Gorham (Alpine House), Stages to Glen House and Summit, Mount Washington R.R. to Base of Mountain, and Fabyan's..... **\$32.00**

**CRAWFORD HOUSE.**

*Form 3033.* Via Toronto, Montreal, St. Lambert, Newport, St. Johnsbury, Lunenburg, and Fabyan's..... **\$18.30**

**FABYAN'S.**

*Form 2697.* Via Toronto, Montreal, St. Johns, St. Albans, Montpelier White River Junction and Wells River..... **\$19.40**

**FABYAN'S.**

*Form 3017.* Via Toronto, Montreal, St. Johns, St. Albans, Montpelier, White River Junction, Wells River, Bethlehem Jn., Profile House and Bethlehem Jn..... **\$22.40**

**GORHAM.—(Alpine House.)**

*Form X 9.* Via Toronto, Montreal, Quebec and Grand Trunk Railway..... **\$20.50**

**GORHAM.—(Alpine House.)**

*Form X 13.* Via Toronto, Montreal and Grand Trunk Railway direct..... **\$17.50**

**GORHAM.—(Alpine House.)**

*Form 3027.* Via Toronto, Montreal, St. Lambert, Newport, St. Johnsbury, Lunenburg, Fabyan's, Crawford House, North Conway, Glen Station, and Glen House.... **\$24.50**

**GORHAM.—(Alpine House.)**

*Form 3038.* Via Toronto, Montreal, St. Lambert, Newport, St. Johnsbury, Lunenburg, Fabyan's, Summit of Mt. Washington, and Glen House..... **\$26.50**

**HALIFAX.**

*Form 2845.* Via Toronto, Montreal, Quebec and Intercolonial Railway..... **\$25.00**

**HALIFAX.**

*Form 2846.* Via Toronto, Montreal, Quebec, Intercolonial Railway to Point du Chêne, Steamer to Summerside, Rail to Charlottetown, Steamer to Pictou, Rail to Halifax. **\$29.50**



6 Routes and Rates of Fare from Niagara Falls.

**KINGSTON.**

*Form X 2.* Via Toronto, and Rail or Steamer ..... **\$7.00**

**LANCASTER, N.H.**

*Form X 98.* Via Toronto, Montreal, Quebec and Groveton ..... **\$19.00**

**MONTREAL.**

*Form X 6.* Via Toronto and Rail or Steamer..... **\$12.00**

**NEW YORK.**

*Form X 19.* Via Toronto, Montreal, Rouse's Point, Plattsburg, Lake Champlain, Lake George, Saratoga, Troy and N.Y. C. & Hudson River R.R. .... **\$26.05**

**NEW YORK.**

*Form X 20.* Via Toronto, Montreal, Rouse's Point, Plattsburg, Lake Champlain, Lake George, Saratoga, Albany, and Peoples Line of Steamers..... **\$24.55**

**NEW YORK.**

*Form X 21.* Via Toronto, Montreal, Rouse's Point, Plattsburg, Lake Champlain, Saratoga, Troy and N. Y. C. and Hudson River R.R..... **\$23.00**

**NEW YORK.**

*Form X 22.* Via Toronto, Montreal, Rouse's Point, Plattsburg, Lake Champlain, Saratoga, Albany, and Peoples Line of Steamers..... **\$22.20**

**NEW YORK.**

*Form X 24.* Via Toronto, Montreal, Gorham (Alpine House), Portland, Boston, and Sound Steamers ..... **\$23.00**

**NEW YORK.**

*Form X 25.* Via Toronto, Montreal, Quebec, Gorham (Alpine House), Portland, Boston, and Sound Steamers **\$26.00**

**NEW YORK.**

*Form X 26.* Via Toronto, Montreal, Rouse's Point, Plattsburg, Lake Champlain, Lake George, Saratoga, Albany, and Day Line Steamers..... **\$25.05**

**NEW YORK.**

*Form X 27.* Via Toronto, Montreal, Rouse's Point, Plattsburg, Lake Champlain, Saratoga, Albany, and Day Line Steamers..... **\$22.70**

**NEW YORK.**

*Form X 36.* Via Toronto, Montreal, Quebec, Gorham (Alpine House), Stage to Glen House and Summit, Mt. Washington R.R. to Base of Mountain, Rail to Crawford House and Fabyan House, Bethlehem Jn., Profile House, Bethlehem Jn., thence via Concord, Nashua, Boston, and Sound Steamers..... **\$45.00**

**NEW YORK.**

*Form X 42.* Via Toronto, Montreal, St. Johns, Burlington, Lake Champlain, Ft. Ticonderoga, Saratoga, Albany, and Day Line Steamers..... **\$22.70**



**Routes and Rates of Fare from Niagara Falls. 7**

**NEW YORK.**

*Form X 43.* Via Toronto, Montreal, St. Johns, Burlington, Lake Champlain, Lake George, Saratoga, Albany, and Day Line Steamers..... **\$25.00**

**NEW YORK.**

*Form X 44.* Via Toronto, Ogdensburg, St. Albans, Burlington, Lake Champlain, Ft. Ticonderoga, Saratoga, Albany and Day Line Steamers..... **\$22.70**

**NEW YORK.**

*Form X 45.* Via Toronto, Ogdensburg, St. Albans, Burlington, Lake Champlain, Lake George, Saratoga and Day Line Steamers ..... **\$25.00**

**NEW YORK.**

*Form X 46.* Via Toronto, Montreal, St. Johns, Burlington, Bellows Falls and Springfield..... **\$22.00**

**NEW YORK.**

*Form X 51.* Via Toronto, Ogdensburg, St. Albans, White River Junction and Springfield..... **\$22.00**

**NEW YORK.**

*Form X 138.* Via Toronto, Montreal, Sherbrooke, White River Junction, South Vernon and Springfield.. **\$23.00**

**NEW YORK.**

*Form X 139.* Via Toronto, Montreal, Quebec, Sherbrooke, White River Junction, S. Vernon and Springfield, **\$26.00**

**NEW YORK.**

*Form X 140.* Via Toronto, Montreal, Sherbrooke, White River Junction, Concord, Nashua, Boston, and Sound Steamers ..... **\$24.00**

**NEW YORK.**

*Form X 141.* Via Toronto, Montreal, Quebec, Sherbrooke, White River Junction, Concord, Nashua, Boston, and Sound Steamers..... **\$27.00**

**NEW YORK.**

*Form X 150.* Via Toronto, Montreal, Groveton, Concord, Nashua, Lowell, Mansfield, Weir Junction to Fall River or Newport, and thence by Steamers..... **\$27.50**

**NEW YORK.**

*Form X 155.* Via Toronto, Ogdensburg, St. Albans, Burlington, Lake Champlain, Ft. Ticonderoga, Saratoga, Troy and N. Y. C. & H. R. R.R..... **\$23.75**

**NEW YORK.**

*Form X 156.* Via Toronto, Ogdensburg, St. Albans, Burlington, Lake Champlain, Lake George, Glens Falls, Saratoga, Troy and N. Y. C. & H. R. R.R. .... **\$26.05**

8 Routes and Rates of Fare from Niagara Falls.

**NEW YORK.**

*Form X 185.* Via Toronto, Montreal, Rouse's Point, Plattsburg, Lake Champlain to Burlington, Central Vermont R.R. to New York via South Vernon and Springfield ..... **\$24.75**

**NEW YORK.**

*Form X 191.* Via Toronto, Montreal, Gorham (Alpine House), Stages to Glen House and Tip Top House, Mt. Washington R.R. to Base, Fabyan's, Bethlehem Jn., Profile House, Bethlehem Jn., Concord, Nashua, Lowell, Boston, and Sound Steamers ..... **\$41.50**

**NEW YORK.**

*Form X 192.* Via Toronto, Montreal, Groveton, Fabyan's, Base of Mountain, Mt. Washington R.R. to Summit. Stages to Glen House, and North Conway, Eastern R.R. to Boston, and Sound Steamers..... **\$36.50**

**NEW YORK.**

*Form X 195.* Via Toronto, Montreal, Quebec, Gorham (Alpine House), Stages to Glen House and Summit, and back to Glen House, Glen Station, Rail to Portland and Boston, and Sound Steamers..... **\$36.75**

**NEW YORK.**

*Form X 198.* Via Toronto, Montreal, Quebec, Gorham (Alpine House), Stages to Glen House and North Conway, Eastern R.R. to Boston, and Sound Steamers.... **\$32.00**

**NEW YORK.**

*Form 2678.* Via Toronto, Montreal, Quebec, Inter. Ry. to Halifax, St. John, Steamer to Portland, Rail to Boston, and Sound Steamers..... **\$38.75**

**NEW YORK.**

*Form 2679.* Via Toronto, Montreal, Quebec, Intercolonial Ry. to Point du Chene, Steamer to Summerside, Rail to Charlottetown, Steamer to Pictou, Rail to Halifax, St. John, Steamer to Portland, Rail to Boston, and Sound Steamers..... **\$42.75**

**NEW YORK.**

*Form 2751.* Via Toronto, Montreal, Quebec, Gorham (Alpine House), Glen House, Summit Mt. Washington, Glen House, Glen Station, Crawford House, Fabyan's, Wells River, White River Junction, Springfield, New Haven..... **\$40.50**

**NEW YORK.**

*Form 2752.* Via Toronto, Montreal, St. Johns, Rutland, State Line, Troy, Albany, and via New York Central and Hudson River R.R..... **\$23.00**

**NEW YORK.**

*Form 2753.* Via Toronto, Montreal, St. Johns, Rutland, State Line, Troy, Albany, Peoples Line Steamers, **\$21.50**

**Routes and Rates of Fare from Niagara Falls. 9**

**NEW YORK.**

**Form 2754.** Via Toronto, Montreal, St. Johns, Rutland, State Line, Troy, Albany, Day Line Steamers..... **\$22.00**

**NEW YORK.**

**Form 2905.** Via Toronto, Montreal, St. Johns, St. Albans, Burlington, Leicester Junction, Ticonderoga, Roger's Rock Hotel, Lake George, Caldwell, Glens Falls, Saratoga and N. Y. C. & H. R. R.R..... **\$26.50**

**NEW YORK.**

**Form 2906.** Via Toronto, Montreal, St. Johns, St. Albans, Bellows Falls, Miller's Falls, New London, and Norwich Line Steamers..... **\$22.00**

**NEW YORK.**

**Form 2907.** Via Toronto, Montreal, Quebec, Gorham (Alpine House), Glen House, Summit Mt. Washington, Base, Fabyan's Crawford House and back to Fabyan's, Wells River, White River Junction, Bellows Falls, Miller's Falls, New London, and Norwich Line Steamers **\$40.50**

**NEW YORK.**

**Form 2960.** Via Toronto, Montreal, Quebec, Gorham, (Alpine House), Stages to Glen House and Summit Mt. Washington, Summit to Base by Mt. Washington R.R., Fabyan's, Crawford House, Fabyan's, Bethlehem Jn., Profile House, Stage to Plymouth, thence via Concord, Nashua, Lowell, Boston, and Sound Steamers..... **\$45.00**

**NEW YORK.**

**Form 2963.** Via Toronto, Montreal, Gorham (Alpine House), Stages to Glen House and Summit Mt. Washington, Summit to Base by Mt. Washington R.R., Fabyan's, Bethlehem Jn., Profile House, Stage to Plymouth, thence via Concord, Nashua, Lowell, Boston and Sound Steamers ..... **\$41.50**

**NEW YORK.**

**Form 3018.** Via Toronto, Montreal, Quebec, Gorham (Alpine House), Glen House, Summit of Mt. Washington, Base of Mountain, Fabyan's, Crawford House, back to Fabyan's, Bethlehem Jn., Profile House, Bethlehem Jn., Wells River, White River Junction, Montpelier, Burlington, Lake Champlain, Steamer to Fort Ticonderoga, Rail to Baldwin, Lake George Steamer to Caldwell, Stage to Glen's Falls, Rail to Saratoga and Albany, and Day Line Steamers to New York..... **\$50.25**

**NEW YORK.**

**Form 3019.** Via Toronto, Montreal, Quebec, Gorham (Alpine House), &c., same as Form 3018 to Albany, then via Peoples Line Steamer to New York ..... **\$49.75**

**NEW YORK.**

**Form 3020.** Via Toronto, Montreal, Rouse's Point, Plattsburgh, Lake Champlain Steamer to Burlington, Rail to Montpelier, White River Junction, Wells River, Bethlehem Jn., Profile House, Bethlehem Jn., Fabyan's, Crawford House, back to Fabyan's, Base of Mt. Washington, Summit, Stage to Glen House, and to Glen Station, Rail to Portland, Boston, and via Sound Steamers ..... **\$42.50**

24.75

41.50

36.50

36.75

32.00

38.75

42.75

40.50

23.00

21.50

**NEW YORK.**

**Form 3021.** Via Toronto, Montreal, Rouse's Point, Plattsburgh, Lake Champlain Steamer to Burlington, Rail to Montpelier, White River Junction, Wells River, Bethlehem Jn., Fabyan's, Base of Mt. Washington, Summit and back to Fabyan's, Crawford House, North Conway, Eastern R.R. to Boston, and Sound Steamers..... **\$38.00**

**NEW YORK.**

**Form 3022.** Via Toronto, Montreal, St. Johns, St. Albans, Montpelier, White River Junction, Wells River, Bethlehem Jn., Profile House, Bethlehem Jn., Fabyan's, Crawford House, North Conway, Portland, Boston, and Sound Steamers..... **\$31.00**

**NEW YORK.**

**Form 3023.** Via Toronto, Montreal, St. Johns, St. Albans, Montpelier, White River Junction, Wells River, Bethlehem Jn., Profile House, Bethlehem Jn., Fabyan's, Crawford House, back to Fabyan's, Base of Mt. Washington, Summit, Stage to Glen House, and to Glen Station, Rail to North Conway, Eastern R.R. to Boston, and Sound Steamers..... **\$41.00**

**NEW YORK.**

**Form 3024.** Via Toronto, Montreal, St. Johns, St. Albans, Montpelier, White River Junction, Wells River, Bethlehem Jn., Profile House, Bethlehem Jn., Fabyan's, Crawford House, back to Fabyan's, Wells River, White River Junction, Bellows Falls, Brattleboro', Miller's Falls, New London, and Sound Steamers..... **\$33.50**

**NEW YORK.**

**Form 3034.** Via Toronto, Montreal, St. Lambert, Newport, St. Johnsbury, Lunenburg, Bethlehem Jn., Profile House, Bethlehem Jn., Fabyan's, Crawford House, North Conway, Eastern R.R. to Boston and Sound Steamers.... **\$29.00**

**NEW YORK.**

**Form 3035.** Via Toronto, Montreal, St. Lambert, Newport, White River Junction, Springfield, Hartford, and New Haven..... **\$23.00**

**NEW YORK.**

**Form 3036.** Via Toronto, Montreal, St. Lambert, Newport, Wells River, Concord, Nashua, Worcester, Norwich, and Sound Steamers..... **\$23.00**

**NEW YORK.**

**Form 3037.** Via Toronto, Montreal, St. Lambert, Newport, St. Johnsbury, Lunenburg, Bethlehem Jn., Profile House, Stage to Plymouth, Concord, Nashua, Worcester, Norwich, and Sound Steamers..... **\$31.00**

**NEW YORK.**

**Form 3038.** Via Toronto, Montreal, St. Lambert, Newport, St. Johnsbury, Lunenburg, Bethlehem Jn., Profile House, Bethlehem Jn., Fabyan's, Summit of Mt. Washington, Glen House, Gorham (Alpine House), Portland, Boston, and Sound Steamers..... **\$37.50**

**Routes and Rates of Fare from Niagara Falls. 11**

**NEW YORK.**

**Form 3057.** Via Toronto, Montreal, Quebec, Sherbrooke, St. Johnsbury, Lunenburg, Scott's, Bethlehem Jn., Profile House, Bethlehem Jn., Fabyan's, Crawford House, Fabyan's, Base of Mt. Washington, Summit, Stage to Glen House and Gorham (Alpine House), Rail to Portland and Boston, and Sound Steamers ..... **\$41.25**

**NEW YORK.**

**Form 3058.** Via Toronto, Montreal, Quebec, Sherbrooke, St. Johnsbury, Lunenburg, Scott's, Bethlehem Jn., Profile House, Bethlehem Jn., Fabyan's, Crawford House, Fabyan's, Wells River, Concord, Nashua, Lowell, Boston, and Sound Steamers ..... **\$33.50**

**NEW YORK.**

**Form 3059.** Via Toronto, Montreal, Quebec, Sherbrooke, St. Johnsbury, Lunenburg, Scott's, Bethlehem Jn., Profile House, Bethlehem Jn., Fabyan's, Crawford House, Fabyan's, Wells River, White River Junc., South Vernon, Springfield, Hartford and New Haven..... **\$34.25**

**NEW YORK.**

**Form 3061.** Via Toronto, Montreal, Quebec, Sherbrooke, St. Johnsbury, Lunenburg, Scott's, Bethlehem Jn., Profile House, Bethlehem Jn., Fabyan's, Crawford House, North Conway, Eastern R.R. to Boston, and Sound Steamers..... **\$32.75**

**NEW YORK.**

**Form 3062.** Via Toronto, Montreal, Quebec, Sherbrooke, St. Johnsbury, Lunenburg, Scott's, Bethlehem Jn., Fabyan's, Base of Mt. Washington, Summit and return to Base, Fabyan's, Crawford House, North Conway, Wolfboro', Steamer to Weirs, Rail to Concord, Nashua, Lowell, Boston and Sound Steamers ..... **\$40.00**

**NEW YORK.**

**Form 3063.** Via Toronto, Montreal, Sherbrooke, St. Johnsbury, Lunenburg, Scott's, Bethlehem Jn., Profile House, Bethlehem Jn., Fabyan's, Crawford House, North Conway, Portland, Boston, and Sound Steamers ..... **\$31.50**

**OGDENSBURG.**

**Form X 5.** Via Toronto, Rail or Steamer..... **\$8.65**

**PORTLAND.**

**Form X 10.** Via Toronto, Montreal, Quebec and Gorham, (Alpine House) ..... **\$21.50**

**PORTLAND.**

**Form X 14.** Via Toronto, Montreal and Gorham (Alpine House), direct..... **\$18.50**

**PRESCOTT.**

**Form X 4.** Via Toronto, Rail or Steamer..... **\$8.65**

ds.

\$38.00

\$31.00

\$41.00

\$33.50

\$29.00

\$23.00

\$23.00

\$31.00

\$37.50

12 Routes and Rates of Fare from Niagara Falls.

**PRESCOTT.**

*Form X 90.* Via Suspension Bridge, Rail to Toronto, and Steamer or Rail..... **\$9.25**

**PRESCOTT.**

*Form X 91.* Via Suspension Bridge, Rail to Toronto, and Steamer or Rail..... **\$9.25**

**PRESCOTT.**

*Form X 92.* Via Suspension Bridge, Steamer from Niagara to Toronto, and Steamer or Rail..... **\$8.65**

**PRESCOTT.**

*Form X 93.* Via Suspension Bridge, Steamer from Niagara to Toronto, and Steamer or Rail..... **\$8.65**

**PRESCOTT.**

*Form 2797.* Via N. Y. C. R.R. and R. & O. N. Co. Steamer from Charlotte..... **\$8.65**

**PROFILE HOUSE.**

*Form X 47.* Via Toronto, Montreal, St. Johns, White River Junction, Wells River and Bethlehem Jn..... **\$20.40**

**PROFILE HOUSE.**

*Form X 48.* Via Toronto, Ogdensburg, St. Albans, White River Junction, Wells River and Bethlehem Jn..... **\$20.40**

**PROFILE HOUSE.**

*Form X 102.* Via Toronto, Montreal, Gorham (Alpine House), Stages to Glen House and Tip Top House, Mt. Washington R.R. to Base of Mountain, Rail to Crawford House, Fabyan House, Bethlehem Jn..... **\$31.25**

**PROFILE HOUSE.**

*Form X 103.* Via Toronto, Montreal, Quebec, Gorham (Alpine House), Stages to Glen House and Summit, Mt. Washington R.R. to base of Mountain, Rail to Crawford House and Fabyan House, Bethlehem Jn..... **\$34.25**

**PROFILE HOUSE.**

*Form 3039.* Via Toronto, Montreal, St. Lambert, Newport, St. Johnsbury, Lunenburg, and Bethlehem Jn..... **\$19.10**

**QUEBEC.**

*Form X 7.* Via Toronto & Rail or Steamer..... **\$14.00**

**QUEBEC and back to MONTREAL.**

*Form X 8.* Via Toronto & Rail or Steamer..... **\$16.00**

**SARATOGA.**

*Form X 18.* Via Toronto, Montreal, Rouse's Point, Plattsburg, Lake Champlain and Lake George..... **\$21.85**

**SARATOGA.**

*Form X 23.* Via Toronto, Montreal, Rouse's Point, Plattsburg, Lake Champlain and Fort Ticonderoga.... **\$19.75**

**Routes and Rates of Fare from Niagara Falls. 13**

**SARATOGA.**

*Form X 28.* Via Toronto, Montreal, Gorham (Alpine House), Stages to Glen House and Summit, Mt. Washington R.R. to Base of Mountain, Crawford and Fabyan Houses, Bethlehem Jn., Profile House, Bethlehem Jn., Wells River, White River Junction, Burlington, and via Lake Champlain, Lake George and Glens Falls **\$45.75**

**SARATOGA.**

*Form X 52.* Via Toronto, Montreal, St. Johns, Burlington, Lake Champlain and Fort Ticonderoga..... **\$19.75**

**SARATOGA.**

*Form X 53.* Via Toronto, Montreal, St. Johns, Burlington, Lake Champlain and Lake George..... **\$21.85**

**SARATOGA.**

*Form X 54.* Via Toronto, Ogdensburg, St. Albans, Burlington, Lake Champlain and Fort Ticonderoga... **\$19.75**

**SARATOGA.**

*Form X 55.* Via Toronto, Ogdensburg, St. Albans, Burlington, Lake Champlain and Lake George ..... **\$21.85**

**SARATOGA.**

*Form 2909.* Via Toronto, Montreal, St. Johns, St. Albans, Burlington, Rutland and Whitehall.... **\$19.75**

**SARATOGA.**

*Form 3026.* Via Toronto, Montreal, Gorham (Alpine House), Stage to Glen House, and to the Summit of Mt. Washington, Rail to Base of Mountain, Fabyan's, Bethlehem Jn., Profile House, Stage to Plymouth, Rail to Wells River, White River Junction, Montpelier, Burlington, Lake Champlain Steamer to Fort Ticonderoga, Rail to Baldwin, Lake George, Steamer to Caldwell, Rail to Glens Falls, Rail to Saratoga..... **\$47.25**

**\$9.25**  
**\$9.25**  
**\$8.65**  
**\$8.65**  
**\$8.65**  
**\$20.40**  
**\$20.40**  
**\$31.25**  
**\$34.25**  
**\$19.10**  
**\$14.00**  
**\$16.00**  
**\$21.85**  
**\$19.75**

SIDE ISSUES  
TO  
**RIVER SAGUENAY,**  
THOUSAND ISLANDS,  
**RANGELEY LAKES,**  
Rapids of River St. Lawrence, &c.

<b>BROCKVILLE TO OTTAWA and return.</b>	
<i>Form 3278.</i> Via Canadian Pacific R.R.....	<b>\$3.35</b>
<b>CRAWFORD HOUSE to SARATOGA.</b>	
<i>Form 3025.</i> Via Rail to North Conway, Wolfboro', Steamer to Weirs, Rail to Plymouth, Stage to Profile House, Rail to Bethlehem Jn., Wells River, White River Junction, Montpelier, Burlington, Lake Steamer to Fort Ticonderoga, Rail to Baldwin, Lake George Steamer to Caldwell, Stage to Glen's Falls and Rail to Saratoga.....	<b>\$22.75</b>
<b>FABYAN'S to BOSTON.</b>	
<i>Form 3121.</i> Via Bethlehem Jn., Profile, Plymouth, Concord, Nashua and Lowell.....	<b>\$9.30</b>
<b>FABYAN'S to PROFILE HOUSE.</b>	
<i>Form 3119.</i> Via Bethlehem Junction.....	<b>\$2.00</b>
<b>FABYAN'S to PROFILE HOUSE and return.</b>	
<i>Form 3120.</i> Via Bethlehem Junction.....	<b>\$4.00</b>
<b>GLEN HOUSE TO PORTLAND. Form X 160.....</b>	<b>\$5.00</b>
<b>GLEN HOUSE TO PROFILE HOUSE. Form 161.</b>	<b>\$5.65</b>
<b>GLEN HOUSE TO QUEBEC. Form X 158.....</b>	<b>\$9.45</b>
<b>GLEN HOUSE TO UPPER DAM and return.</b>	
<i>Form 2790.</i> Via Gorham, Alpine House, Bryant's Pond, Andover and South Arm, returning same way.....	<b>\$12.00</b>
<b>GLEN HOUSE TO UPPER DAM and return, via Dixville Notch. Form 2791.</b>	
Via Gorham (Alpine House), Bry. Pond, Andover, South Arm, Upper Dam, Middle Dam, Sunday Cove, Errol Dam, Colebrook, No. Stratford and Gorham (Alpine House).....	<b>\$14.50</b>
<b>GLEN HOUSE TO UPPER DAM and return, via Dixville Notch. Form 2792.</b>	
Reverse of 2791.....	<b>\$14.50</b>



	<b>GLEN HOUSE TO UPPER DAM and return.</b>	
	<i>Form 2793.</i> Via Gorham (Alpine House), Bethel, Upton, Sunday Cove, Middle Dam and Upper Dam, returning same way.....	<b>\$14.00</b>
	<b>GLEN HOUSE TO UPPER DAM and return.</b>	
	<i>Form 2794.</i> Via Gorham (Alpine House), Bethel, Upton, Sunday Cove, Middle Dam, Upper Dam, South Arm, Andover, Bryant's Pond and Gorham.....	<b>\$13.00</b>
	<b>GLEN HOUSE TO UPPER DAM and return.</b>	
	<i>Form 2795.</i> Reverse of 2794.....	<b>\$13.00</b>
	<b>GLEN HOUSE TO UPPER DAM and return.</b>	
	<i>Form 2798.</i> Via Gorham (Alpine House), Bethel, Upton, Sunday Cove, Middle Dam, Upper Dam, Middle Dam, Sunday Cove, Errol Dam, Colebrook, No. Stratford and Gorham.....	<b>\$15.50</b>
	<b>GLEN HOUSE TO UPPER DAM and return.</b>	
	<i>Form 2799.</i> Reverse of 2798.....	<b>\$15.50</b>
	<b>GLEN HOUSE TO MONTREAL. Form X 157.....</b>	<b>\$8.70</b>
	<b>MONTREAL to CORNWALL and return.</b>	
	<i>Form 2501.....</i>	<b>\$3.35</b>
	<b>MONTREAL to KINGSTON and return.</b>	
	<i>E 2500.</i> Grand Trunk Railway to Kingston, Steamer through Thousand Islands and Rapids of St. Lawrence to Montreal.....	<b>\$8.00</b>
	<b>MONTREAL to LACHINE and return.</b>	
	Rail to Lachine, Steamer (shooting the Rapids).....	<b>\$ .50</b>
	<p>A train Leaves Montreal at 7 A.M., daily, and connects at Lachine with the new steamer "Beauharnois," which leaves at 8 A.M., shoots the "Lachine Rapids" (the finest of the St. Lawrence), passes under the Victoria Bridge, and arrives at Montreal about 9 A.M. This is the only boat which runs the Lachine Rapids during the entire season, and which can be depended on to run at a regularly advertised hour. The train arrives at Lachine at 7.30 A.M., which gives passengers ample time to obtain a comfortable breakfast at a hotel directly opposite the Steamboat Wharf.</p>	
	<b>MONTREAL to OTTAWA.</b>	
	<i>Form 2980.</i> Via G. T. Ry. to Lachine, O. R. N. Co. Steamer to Ottawa.....	<b>\$2.50</b>
	<b>MONTREAL to OTTAWA and return.</b>	
	<i>Form 2982.</i> Via G. T. Ry. to Lachine, O. R. N. Co. Steamer to Ottawa, returning by O. R. N. Co. Steamer to Lachine, G. T. R. or Steamer to Montreal.....	<b>\$4.00</b>
	<b>MONTREAL to PRESCOTT and return.</b>	
	<i>Form 2502.....</i>	<b>\$5.60</b>

Y,

S,

\$3.35

\$22.75

\$9.30

\$2.00

\$4.00

\$5.00

\$5.65

\$9.45

\$12.00

\$14.50

\$14.50

<b>MONTREAL to QUEBEC and return.</b>	
<i>Form X 41.</i> Via Rail or Steamer.....	<b>\$4.00</b>
<b>NORTH STRATFORD (G. T. R.) to RANGELEY LAKES and BRYANT'S POND (G. T. R.)</b>	
<i>Form 3166.</i> Via Stage North Stratford to Colebrook, Dixville Notch, Errol Dam, Steamer to Sunday Cove, Middle Dam, Upper Dam Landing and South Arm of Lake, Stage to Andover and Bryant's Pond.....	<b>\$9.00</b>
<b>OTTAWA to MONTREAL.</b>	
<i>Form 2979.</i> Via O. R. N. Co. Steamer to Lachine, G. T. Ry. or Steamer to Montreal .....	<b>\$2.50</b>
<b>OTTAWA to MONTREAL and return.</b>	
<i>Form 2981.</i> Via O. R. N. Co. Steamer to Lachine, G. T. Ry. or Steamer to Montreal, returning by G. T. Ry. to Lachine, O. R. N. Co. Steamer to Ottawa .....	<b>\$4.00</b>
<b>PORT KENT to AUSABLE CHASM and return.</b>	
<i>Form X 96.</i> Via Stage.....	<b>\$ .75</b>
<b>QUEBEC to CACOUNA and return.</b>	
<i>Form X 65.</i> Via Steamer from Quebec to Rivière du Loup and Intercolonial R.R. or all Rail.....	<b>\$4.50</b>
<b>QUEBEC to HA-HA BAY and return.</b>	
<i>Form X 67.</i> Via Steamer or Rail from Quebec to Rivière du Loup and Steamer.....	<b>\$8.00</b>
<b>QUEBEC to TADOUSAC and return.</b>	
<i>Form X 66.</i> Via Rail or Steamer from Quebec to Rivière du Loup and Steamer.....	<b>\$5.00</b>
<b>RICHMOND to QUEBEC and back.</b>	
<i>Form X 56.</i> Via Grand Trunk Railway .....	<b>\$3.00</b>
<b>RIVIERE DU LOUP to HA-HA BAY and return.</b>	
<i>Form 2761.</i> .....	<b>\$5.00</b>
<b>TORONTO to COUCHICHING and return.</b>	
<i>Form 2569.</i> Via Northern Railway, Toronto to Lake Couchiching and return.....	<b>\$3.50</b>
<b>TORONTO to NIAGARA FALLS and return.</b>	
<i>Form X 87.</i> Steamer to Lewiston, Rail to Falls. Return same way.....	<b>\$3.00</b>
<b>TORONTO to NIAGARA FALLS and return.</b>	
All Rail. G. W. Railway.....	<b>\$4.20</b>
<b>ST. HILAIRE to TROQUOIS HOUSE and return (Beloeil Mt.) Form 2729.</b> Via Omnibus.....	
	<b>\$ .50</b>

# EXCURSIONS

VIA

## Montreal, Quebec and the Lower Provinces

	<b>BOSTON to HALIFAX.</b>	
	<i>Form 2770.</i> Via Portland, Quebec and Pictou.....	<b>\$21.15</b>
	<b>HALIFAX to BOSTON.</b>	
	<i>Form 2771.</i> Reverse of 2770.....	<b>\$21.15</b>
	<b>BOSTON to HALIFAX.</b>	
	<i>Form 2772.</i> Via Portland (B. & M. or E. R.R.), Quebec (G. T.), Pt. Du Chene (Inter. Ry.), Summerside (Steamer), Charlottetown (P. E. I. Ry.), Pictou (Steamer), to Halifax (Inter. Ry.).....	<b>\$25.00</b>
	<b>HALIFAX to BOSTON.</b>	
	<i>Form 2773.</i> Reverse of 2772.....	<b>\$25.00</b>
	<b>BOSTON to HALIFAX.</b>	
	<i>Form 2774.</i> Via Portland (B. & M. or E. R.R.), Quebec (G. T.), to Halifax direct (Inter. Ry.).....	<b>\$21.00</b>
	<b>HALIFAX to BOSTON.</b>	
	<i>Form 2775.</i> Reverse of 2774.....	<b>\$21.00</b>
	<b>BOSTON to HALIFAX.</b>	
	<i>Form 2776.</i> Via Portland, Montreal, Quebec and Pictou,	<b>\$22.65</b>
	<b>HALIFAX to BOSTON.</b>	
	<i>Form 2777.</i> Reverse of 2776.....	<b>\$22.65</b>
	<b>BOSTON to HALIFAX.</b>	
	<i>Form 2778.</i> Via Portland (B. & M. or E. R.R.), Montreal (G.T.), Quebec (Rail or Boat), Pt. Du Chene (Inter. Ry.), Summerside (Stmr.), Charlottetown (P. E. I. Ry.), Pictou (Steamer), to Halifax (Inter. Ry.).....	<b>\$26.50</b>
	<b>HALIFAX to BOSTON.</b>	
	<i>Form 2779.</i> Reverse of 2778.....	<b>\$26.50</b>
	<b>BOSTON to HALIFAX.</b>	
	<i>Form 2780.</i> Via Portland (B. & M. or E. R.R.), Montreal (G. T.), Quebec (Rail or Boat), to Halifax direct (Inter. Ry.).....	<b>\$22.00</b>
	<b>HALIFAX to BOSTON.</b>	
	<i>Form 2781.</i> Reverse of 2780.....	<b>\$22.00</b>

\$4.00

\$9.00

\$2.50

\$4.00

\$ .75

\$4.50

\$8.00

\$5.00

\$3.00

\$5.00

\$3.50

\$3.00

\$4.20

\$ .50

18      Excursions via Montreal, Quebec, &c.

---

**BOSTON to HALIFAX.**

*Form 2782.* Via Portland (R. & M. or E. R.R.), St. John, N. B. (Steamer), to Halifax (Inter. Ry)..... **\$10.50**

**HALIFAX to BOSTON.**

*Form 2783.* Reverse of 2782..... **\$10.50**

**BOSTON to HALIFAX.**

*Form 2784.* Via Rail to Portland and Steamer..... **\$**

**HALIFAX to BOSTON.**

*Form 2785.* Reverse of 2784..... **\$**

---

The above to be sold only in connection with other Tickets over the G. T. Ry.

# VARIOUS EXCURSIONS ROUTES

AT REDUCED RATES,

To Points on Grand Trunk Railway.

<b>BOSTON to BETHEL and return.</b> <i>Forms 2742; 2743.</i> Via B. & M. or Eastern Ry's between Boston and Portland .....	<b>\$8.00</b>
<b>BOSTON to BETHEL and return.</b> <i>Forms 2744; 3040.</i> Via Steamer between Boston and Portland .....	<b>\$7.00</b>
<b>BOSTON to BRYANT'S POND and return.</b> <i>Forms 2745; 2746.</i> Via B. & M. or Eastern Ry's be- tween Boston and Portland.....	<b>\$7.50</b>
<b>BOSTON to BRYANT'S POND and return.</b> <i>Form 2747; 3040.</i> Via Steamer between Boston and Portland .....	<b>\$6.50</b>
<b>BOSTON to DULUTH or FORT WILLIAM and return.</b> <i>Form E M 568 R.</i> Via Steamer from Sarnia.....	<b>\$57.25</b>
<b>BOSTON to GORHAM (Alpine House), and return.</b> <i>Forms 2514; 3040.</i> Via Steamer between Boston and Portland.....	<b>\$7.00</b>
<b>BOSTON to GORHAM (Alpine House), and return.</b> <i>Forms 2738; 2870.</i> Via Rail between Boston and Port- land .....	<b>\$8.00</b>
<b>BOSTON to GORHAM (Alpine House), and return.</b> <i>Form 2935.</i> Via Lowell, Nashua, Rochester and Port- land; returning same way.....	<b>\$3.00</b>
<b>BOSTON to GRAND VIEW HOUSE and return.</b> <i>Forms 3214, 3228, and 3229.</i> Via Portland and Lewiston, or Auburn.....	<b>\$7.00</b>
<b>BOSTON to GROVETON and return.</b> <i>Form 3041.</i> Via Lowell, Nashua, Concord and Plymouth ; Returning via Gorham (Alpine House) and Portland; all rail.....	<b>\$11.20</b>
<b>BOSTON to GROVETON and return.</b> <i>Form 3042.</i> Reverse of 3041.....	<b>\$11.20</b>
<b>BOSTON to GROVETON and return.</b> <i>Form 3043.</i> Via Portland; all rail.....	<b>\$10.20</b>
<b>BOSTON to LAKE AUBURN HOUSE and return.</b> <i>Form 2995.</i> Rail between Boston and Portland; Stage and Ferry.....	<b>\$7.00</b>

10.50

10.50

T. Ry.

<b>BOSTON to MECHANIC FALLS and return.</b> <i>Forms 2748; 2749.</i> Rail between Boston and Portland	<b>\$6.50</b>
<b>BOSTON to MECHANIC FALLS and return.</b> <i>Forms 2750; 3040.</i> Via Steamer between Boston and Portland	<b>\$4.50</b>
<b>BOSTON to MONTREAL and return.</b> <i>Form X 110.</i> Via Portland, Grand Trunk and Central Vermont Railways	<b>\$16.00</b>
<b>BOSTON to MONTREAL and return.</b> <i>Form X 111.</i> Via Central Vermont and Grand Trunk Railways	<b>\$16.00</b>
<b>BOSTON to MONTREAL and return.</b> <i>Form X 112.</i> Via Portland, Grand Trunk Railway, Rutland and Burlington	<b>\$16.00</b>
<b>BOSTON to MONTREAL and return.</b> <i>Form X 113.</i> Via Fitchburg, Rutland and Burlington, and Grand Trunk Railway	<b>\$16.00</b>
<b>BOSTON to MONTREAL and return.</b> <i>Form 2803.</i> Via Portland and Gorham (White Mts.)	<b>\$15.00</b>
<b>BOSTON to MONTREAL and return.</b> <i>Form 2804.</i> Via B. & M. and G. T. Ry's, to Point Levi, Steamer to Montreal; return via Portland	<b>\$18.00</b>
<b>BOSTON to MONTREAL and return.</b> <i>Form 2859.</i> B. & M. or E. and G. T. to Montreal, return via Groveton Junction, Concord and Nashua	<b>\$16.00</b>
<b>BOSTON to MONTREAL and return.</b> <i>Form 2860.</i> Reverse of 2859	<b>\$16.00</b>
<b>BOSTON to MONTREAL and return.</b> <i>Form 3095, 3096.</i> Via Lowell, Nashua, Concord, Wells River, Newport and So. Eastern Railway. Returning same way	<b>\$16.00</b>
<b>BOSTON to MONTREAL and return.</b> <i>Form 3109, 3110.</i> Via Fitchburg, Bellows Falls, Rutland, Saratoga, Fort Ticonderoga, Plattsburgh, and Rouse's Pt. Returning same way	<b>\$27.30</b>
<b>BOSTON to MONTREAL and return.</b> <i>Forms 3111, 3112.</i> Via Lowell, Nashua, W. R. Junction, Burlington, Fort Ticonderoga and Rouse's Point. Returning same way	<b>\$26.00</b>
<b>BOSTON to MONTREAL and return.</b> <i>Forms 3113, 3114.</i> Via Fitchburg, Bellows Falls, Rutland, Saratoga, Glen's Falls, Caldwell, Baldwin, Ft. Ticonderoga, Plattsburgh, Rouse's Point. Returning same way	<b>\$30.00</b>

Excursion Routes at Reduced Rates.

	<b>BOSTON to MONTREAL and return.</b>	
	<i>Forms 3146, 3147.</i> Via Portland and G. T. Railway	
	Returning same way.....	<b>\$15.00</b>
	<b>BOSTON to MONTREAL and return.</b>	
	<i>Forms 3184, 3185.</i> Via Lowell, Nashua, Concord and	
	White River Junction. Returning same way .....	<b>\$16.00</b>
	<b>BOSTON to MONTREAL and return.</b>	
	<i>Forms 3186, 3187.</i> Via Lowell, Nashua, Concord, Wells	
	River, Newport and So. Eastern Railway. Returning	
	same way.....	<b>\$16.00</b>
	<b>BOSTON to MONTREAL and return.</b>	
	<i>Forms 3188, 3189.</i> Via Portland, No. Conway, White	
	Mountain Notch, Crawford's, Fabyan's and Groveton.	
	Returning same way .....	<b>\$22.50</b>
	<b>BOSTON to MONTREAL and return.</b>	
	<i>Forms 3190, 3191.</i> Via Portland, No. Conway, White	
	Mountain Notch, Crawford's, Fabyan's, Groveton, Rich-	
	mond and Quebec. Returning same way.....	<b>\$27.50</b>
	<b>BOSTON to MONTREAL and return.</b>	
	<i>Forms 3192, 3193.</i> Via Portland and Quebec. Re-	
	turning same way.....	<b>\$19.00</b>
	<b>BOSTON to MONTREAL and return.</b>	
	<i>Forms 3194, 3195.</i> Via Sound Steamers to New York,	
	N. Y. C. & H. R. R'y to Albany, thence Rail via Saratoga.	
	Returning same way.....	<b>\$30.00</b>
	<b>BOSTON to MONTREAL and return.</b>	
	<i>Forms 3196, 3197.</i> Via Fitchburg, Hoosac Tunnel and	
	Saratoga. Returning same way.....	<b>\$28.00</b>
	<b>BOSTON to MONTREAL and return.</b>	
	<i>Forms 3198, 3199.</i> Via Boston & Albany R.R. and Sara-	
	toga. Returning same way .....	<b>\$28.00</b>
	<b>BOSTON to MONTREAL and return.</b>	
	<i>Form 3244, 3245.</i> Via Nashua, Concord, Wells River	
	and Sherbrooke. Returning same way.....	<b>\$16.00</b>
	<b>BOSTON to NORTH STRATFORD and return.</b>	
	<i>Forms 2704, 2705.</i> Via B. & M. or E. R.R. to Portland,	
	G. T. Railway to North Stratford; Return same way.....	<b>\$11.00</b>
	<b>BOSTON to NORTH STRATFORD and return.</b>	
	<i>Forms 2706, 3040.</i> Via Steamer between Boston and	
	Portland .....	<b>\$10.00</b>
	<b>BOSTON to POLAND SPRINGS and return.</b>	
	<i>Forms 2921, 2922.</i> Via Rail between Boston and	
	Portland.....	<b>\$6.00</b>

## Excursion Routes at Reduced Rates.

<b>BOSTON to POLAND SPRINGS and return.</b>	
<i>Forms 2923, 3040.</i> Via Steamer between Boston and Portland.....	\$4.75
<b>BOSTON to POLAND SPRINGS and Return.</b>	
<i>Form 2934.</i> Via Lowell, Nashua, Rochester and Portland; Returning same way.....	\$6.00
<b>BOSTON to POINT LEVI and return.</b>	
<i>Form 2805.</i> Via Portland and Gorham (White Mts.)...	\$17.00
<b>BOSTON to POINT LEVI and return.</b>	
<i>Form 2806.</i> Via B. & M. and G. T. Ry's to Montreal, Steamer to Quebec; Return via G. T. and B. and M. Ry's.	\$18.00
<b>BOSTON to POINT LEVI and return.</b>	
<i>Form 2853.</i> Via Nashua, Concord, Wells River, Sherbrooke and G. T. Ry'; Return via G. T. and B. & M. Ry's	\$19.00
<b>BOSTON to POINT LEVI and return.</b>	
<i>Form 2854.</i> Reverse of 2853.....	\$19.00
<b>BOSTON to POINT LEVI and return.</b>	
<i>Form 2855.</i> B. & M. or E. and G. T. Ry to Point Levi; Return via Groveton, Concord and Nashua.....	\$19.00
<b>BOSTON to POINT LEVI and return.</b>	
<i>Form 2856.</i> Reverse of 2855.....	\$19.00
<b>BOSTON to POWNAL and return.</b>	
<i>Form 3215, 3216, 3227.</i> Via Portland and Grand Trunk Railway; Returning same way.....	\$6.00
<b>BOSTON to QUEBEC and return.</b>	
<i>Form X 130.</i> Via Portland and Grand Trunk Railway to Quebec, Rail or Steamer to Montreal, Central Vermont R.R. to Boston.....	\$18.50
<b>BOSTON to QUEBEC and return.</b>	
<i>Form X 131.</i> Via Central Vermont Railway to Montreal; Rail or Steamer to Quebec; Rail via Portland to Boston...	\$18.50
<b>BOSTON to QUEBEC and return.</b>	
<i>Forms 3089, 3090.</i> Via Portland, Richmond Junction, and Pt. Levi. Returning same way.....	\$16.00
<b>BOSTON to QUEBEC and return.</b>	
<i>Forms 3091, 3092.</i> Via Lowell, Nashua, Concord, Wells River, Newport and Montreal. Returning same way.....	\$21.00
<b>BOSTON to SOUTH PARIS and return.</b>	
<i>Forms 2741, 3040.</i> Via Steamer between Boston and Portland.....	\$5.25
<b>BOSTON to SOUTH PARIS and return.</b>	
<i>Forms 2739, 2740.</i> Via Rail between Boston and Portland.....	\$7.00



# EXCURSION ROUTES

TO AND FROM THE

## White Mountains.

- BOSTON to ALPINE HOUSE (Gorham), and return.**  
*Forms 2514, 3040.* Steamer between Boston and Portland and G. T. R. Returning same way..... **\$7.00**
- BOSTON to ALPINE HOUSE (Gorham), and return.**  
*Forms 2738, 2870.* All Rail via Portland. Returning same way ..... **\$8.00**
- BOSTON to ALPINE HOUSE (Gorham), and return.**  
*Form 2935.* Via Lowell, Nashua, Rochester and Portland. Returning same way ..... **\$8.00**
- BOSTON to CRAWFORD HOUSE and return.**  
*Form X 73.* Rail or Steamer to Portland, Rail to Gorham (Alpine House), Stage via Glen House to Tip Top House, Mt. Washington Railroad Summit to Base, rail to Crawford House; return same way ..... **\$30.00**
- BOSTON to CRAWFORD HOUSE and return.**  
*Form X 74.* Via Alton Bay, Centre Harbor, and North Conway. Returning via Fabyan's, Base, Summit, Glen House, Gorham (Alpine House), and Portland ..... **\$21.75**
- BOSTON to CRAWFORD HOUSE and return.**  
*Form X 75.* Reverse of 74..... **\$21.75**
- BOSTON to CRAWFORD HOUSE and return.**  
*Form X 132.* Eastern Railroad to North Conway, P. & O. R.R. to Crawford House, Rail to Base of Mt. Washington, Mt. Washington Railroad Base to Summit, Stage Tip Top House, via Glen House to Gorham (Alpine House), Rail to Portland, Rail or Steamer to Boston..... **\$21.50**
- BOSTON to CRAWFORD HOUSE and return.**  
*Form X 133.* Rail or Steamer to Portland, Rail to Gorham (Alpine House), Stage via Glen House to Tip Top House, Mt. Washington Railroad Summit to Base, Rail to Crawford House, P. & O. R.R. to North Conway, Eastern R.R. to Boston ..... **\$21.50**

**BOSTON to CRAWFORD HOUSE and return.**

*Form 3122.* Via Alton Bay, Centre Harbor, Wolfboro', No. Conway, Fabyan's, Base, Summit, Glen House, Gorham (Alpine House), and Portland. . . . . **\$21.75**

**BOSTON to CRAWFORD HOUSE and return.**

*Form 3123.* Reverse of 3122. . . . . **\$21.75**

**BOSTON to CRAWFORD HOUSE and return.**

*Form 3211.* Via Portland, Gorham (Alpine House), Glen House, and Glen Station. Returning via North Conway, Wolfboro', and Centre Harbor. . . . . **\$18.00**

**BOSTON to FABYAN HOUSE and return.**

*Form 3210.* Via Portland, Gorham (Alpine House), and Glen House, and Glen Station. Returning via Concord, Manchester, and Lawrence. . . . . **\$17.00**

**BOSTON to GLEN HOUSE and return.**

*Form X 72 and 2517.* Rail or Steamer to Portland, Rall to Gorham (Alpine House), Stage to Glen House; return same way. . . . . **\$11.00**

**BOSTON to GLEN HOUSE and return.**

*Form X 164.* Rail or Steamer to Portland, Rall to Gorham (Alpine House), Stage to Glen House, and return to Gorham (Alpine House), Rail via Groveton to Bethlehem Jn., Profile House, and Plymouth, Rall via Concord to Boston. . . . . **\$21.50**

**BOSTON to GLEN HOUSE and return.**

*Form 134.* Via Portland and Gorham (Alpine House). Returning via Glen Station, and North Conway. . . . . **\$13.50**

**BOSTON to GLEN HOUSE and return.**

*Form 135.* Reverse of 134. . . . . **\$13.50**

**BOSTON to GLEN HOUSE and return.**

*Form 3206.* Via Portland, and Gorham (Alpine House). Returning via Glen Station, Crawford's, Fabyan's, Bethlehem Jn., Profile, Plymouth, Weirs, Centre Harbor, and Wolfboro'. . . . . **\$19.75**

**BOSTON to GLEN HOUSE and return.**

*Form 2919.* B. & M. or Eastern R.R. to Portland, G. T. Railway to Gorham (Alpine House), Stage to Glen House, Glen Station, and No. Conway, Eastern Railroad to Wolfboro', Steamer to Centre Harbor and Alton Bay; B. & M. R.R. to Boston. . . . . **\$16.25**

**BOSTON to GLEN HOUSE and return.**

*Form 2920.* Reverse of 2919. . . . . **\$16.25**

**BOSTON to GLEN HOUSE and return.**

*Form 3124.* Via Portland and Gorham (Alpine House); returning, Stage to Glen Station, Rall to No. Conway and Boston. . . . . **\$13.50**

**Routes to and from the White Mountains.**

**BOSTON to GLEN HOUSE and return.**

*Form 3125.* Reverse of 3124..... **\$13.50**

**BOSTON to PROFILE HOUSE and return.**

*Form X 165.* Rall or Steamer to Portland, Rall to Gorham (Alpine House), Stage to Glen House and return to Gorham (Alpine House,) Rall via Groveton to Bethlehem Jn., Profile House and return, Rail via Wells River, Concord, and Nashua ..... **\$21.50**

**BOSTON to PROFILE HOUSE.**

*Form 3115.* Via Lowell, Nashua, Concord and Plymouth **\$8.15**

**PROFILE HOUSE to BOSTON.**

*Form 3116.* Reverse of 3115..... **\$8.15**

**BOSTON to PROFILE HOUSE.**

*Form 3117.* Via Portland, Gorham (Alpine House), Glen House, Sunmit, Base, Bethlehem Jn..... **\$15.50**

**PROFILE HOUSE to BOSTON.**

*Form 3118.* Reverse of 3117..... **\$15.50**

**BOSTON to SUMMIT MOUNT WASHINGTON and return.**

*Form 3202.* Via Portland, Gorham (Alpine House), Glen House and Stage. Returning via R.R. to Base, Fabyan's, Weirs, Centre Harbor, Wolfboro', and Alton Bay ..... **\$24.20**

**BOSTON to SUMMIT MOUNT WASHINGTON and return.**

*Form 3203.* Via Alton Bay, Centre Harbor, Wolfboro', North Conway, Crawford's, Fabyan's, and Base. Returning via Glen House, Gorham (Alpine House), and Portland. **\$20.70**

**BOSTON to SUMMIT MOUNT WASHINGTON and return.**

*Form 3204.* Via Portland, Gorham (Alpine House), Glen House, and Stage. Returning via Glen Station, North Conway, and Portland..... **\$17.30**

21.75

21.75

18.00

17.00

11.00

21.50

13.50

13.50

19.75

16.25

16.25

13.50

# EXCURSIONS

TO THE

## RANGELEY LAKES.

**BOSTON to ANDOVER and return.**

*Forms 2510; 3040.* Via Steamer between Boston and Portland, Grand Trunk Railway to Bryant's Pond, Stage to Andover; Returning same way..... **\$9.00**

**BOSTON to ANDOVER and return.**

*Forms 2511, 2537.* Via B. & M. or Eastern Railway between Boston and Portland; thence same as 2510.... **\$10.00**

**BOSTON to BEMIS (HAYFORD LODGE), and return.**

*Forms 3223; 3224.* Via Portland, Mec. Falls, Canton, Mexico, Byron; Returning same way..... **\$12.50**

**BOSTON to BEMIS (HAYFORD LODGE), and return.**

*Forms 3225, 3226.* Via Portland, Bryant's Pond, Andover, So. Arm, Upper Dam; Returning same way..... **\$14.00**

**BOSTON to BEMIS STREAM and return.**

*Form 3273.* Via Portland, Bry. Pond, Andover, So. Arm and Upper Dam; Returning same way..... **\$14.00**

**BOSTON to BEMIS STREAM and return.**

*Form 3274.* Via Portland, Bethel, Lake Umbagog, Sunday Cove, Middle Dam and Upper Dam; Returning same way..... **\$17.00**

**BOSTON to BYRON (HOUGHTON), and return.**

*Form 3205.* Via Portland, Mec Falls, Canton and Mexico; Returning same way..... **\$11.00**

**BOSTON to COLEBROOK and return.**

*Form 3013.* Via Portland and North Stratford. Returning same way..... **\$13.00**

**BOSTON to COLEBROOK and return.**

*Form 3207.* Via Portland, Bry. Pond, Andover, So. Arm, Upper Dam, Middle Dam, Sunday Cove and Errol Dam; Returning via No. Stratford, Groveton Jn., Concord, Manchester and Lawrence..... **\$19.00**

**BOSTON to COLEBROOK and return.**

*Form 3208.* Via Portland, Bry. Pond, Andover, So. Arm, Upper Dam, Middle Dam, Sunday Cove and Errol Dam; Returning via No. Stratford, Groveton Jn., Fabyan's and Portland..... **\$20.10**

Excursions to the Rangeley Lakes.

**BOSTON to COLEBROOK and return.**

*Form 3209.* Via Portland and No. Stratford; Returning via Gorham (Alpine House), Glen House, Summit, Base Fabyan's and Portland..... **\$25.70**

**BOSTON to COLEBROOK and return.**

*Form 3272.* Via Portland, Bethel, Lake Umbagog and Errol Dam; Returning same way..... **\$17.50**

**BOSTON to DIXVILLE NOTCH and return.**

*Form 2967.* Via Portland, Bethel, Upton, Errol Dam, to Dixville Notch. Returning same way..... **\$14.50**

**BOSTON to DIXVILLE NOTCH and return.**

*Form 3011.* Via Portland, Bethel, Upton, Errol Dam, Dixville Notch, Colebrook, North Stratford and Portland. **\$14.00**

**BOSTON to DIXVILLE NOTCH and return.**

*Form 3012.* Reverse of 3011..... **\$14.00**

**BOSTON to DIXVILLE NOTCH and return.**

*Form 3087 and 3088.* Via Portland, No. Stratford and Colebrook; Returning same way..... **\$15.00**

**BOSTON to DIXVILLE NOTCH and return.**

*Form 3127 and 3128.* Via Lowell, Nashua, Concord, Groveton Junction, No. Stratford and Colebrook; Returning same way..... **\$18.15**

**BOSTON to INDIAN ROCK and return.**

*Form 2985.* Via Portland, Bryant's Pond, Andover, Arm of Lake and Upper Dam. Returning same way.... **\$14.00**

**BOSTON to INDIAN ROCK and return.**

*Form 3163.* Via Portland, Bethel, Upton, Sunday Cove, Middle Dam and Upper Dam; Returning same way..... **\$17.50**

**BOSTON to INDIAN ROCK and return.**

*Form 3164.* Via Portland, Bethel, Upton, Sunday Cove, Middle Dam and Upper Dam; Returning via Upper Dam, So. Arm, Andover, Bryant's Pond and Portland..... **\$16.00**

**BOSTON to INDIAN ROCK and return.**

*Form 3165.* Reverse of 3164..... **\$16.00**

**BOSTON to INDIAN ROCK and return.**

*Forms 3219, 3220.* Via Portland, Mec. Falls, Mexico, Byron and Bemis; Returning same way..... **\$14.00**

**BOSTON to UPPER DAM and return.**

*Form 3212.* Via Portland, No. Stratford, Colebrook, Errol Dam, Sunday Cove and Middle Dam; Returning via Middle Dam, Sunday Cove, Errol Dam, Colebrook, No. Stratford, Groveton Jn., Concord and Lawrence..... **\$23.25**

**BOSTON to UPPER DAM and return.**

*Forms 3217, 3218.* Via Portland, Mec. Falls, Canton, Mexico, Byron and Bemis; Returning same way..... **\$13.75**

S.

\$9.00

10.00

12.50

14.00

14.00

17.00

11.00

13.00

19.00

\$20.10

## Excursions to the Rangeley Lakes.

<b>BOSTON to MAGALLOWAY and return.</b>	
<i>Form 2966.</i> Via Portland, Bethel and Upton. Returning same way.....	<b>\$14.00</b>
<b>BOSTON to MAGALLOWAY and return.</b>	
<i>Form 3009.</i> Via Portland, Bryant's Pond, Andover, So. Arm, Middle Dam and Sunday Cove. Returning same way.	<b>\$16.00</b>
<b>BOSTON to MIDDLE DAM and return.</b>	
<i>Form 2983.</i> Via Portland, Bryant's Pond, Andover, Arm of Lake.....	<b>\$12.00</b>
<b>BOSTON to MIDDLE DAM and return.</b>	
<i>Form 3160.</i> Via Portland, Bethel, Upton and Sunday Cove; Returning same way.....	<b>\$14.50</b>
<b>BOSTON to MIDDLE DAM and return.</b>	
<i>Form 3161.</i> Via Portland, Bethel, Upton and Sunday Cove; Returning via So. Arm, Andover, Bryant's Pond and Portland.....	<b>\$13.25</b>
<b>BOSTON to MIDDLE DAM and return.</b>	
<i>Form 3162.</i> Reverse of 3161.....	<b>\$13.25</b>
<b>BOSTON to RANGELEY OUTLET and return.</b>	
<i>Form 2986.</i> Via Portland, Bryant's Pond, Andover, Arm of Lake, Upper Dam, Indian Rock, Rangeley Outlet or Mountain View House. Returning via Greenvale, or Rangeley, Phillips, Farmington and Portland.....	<b>\$15.25</b>
<b>BOSTON to RANGELEY OUTLET and return.</b>	
<i>Form 2987.</i> Via Portland, Farmington and Phillips. Returning via Andover, Bryant's Pond and G.T. Ry....	<b>\$15.25</b>
<b>BOSTON to SOUTH ARM and return.</b>	
<i>Form 3010.</i> Via Portland, Bryant's Pond and Andover. Return same way.....	<b>\$12.00</b>
<b>BOSTON to UMBAGOG LAKES and return.</b>	
<i>Forms 2916; 2917.</i> Via Rail between Boston and Portland. Returning same way.....	<b>\$11.00</b>
<b>BOSTON to UMBAGOG LAKES and return.</b>	
<i>Form 2918.</i> Via Steamer between Boston and Portland. Returning same way.....	<b>\$10.00</b>
<b>BOSTON to UPPER DAM and return, via Dixville Notch.</b>	
<i>Form 2800.</i> Via Portland, Bryant's Pond, Andover, So. Arm, Upper Dam, Middle Dam, Sunday Cove, Errol Dam, Colebrook, N. Stratford and Portland.....	<b>\$16.00</b>
<b>BOSTON to UPPER DAM via Dixville Notch and return.</b>	
<i>Form 2801.</i> Reverse of Form 2800.....	<b>\$16.00</b>
<b>BOSTON to UPPER DAM via Dixville Notch and return.</b>	
<i>Form 2802.</i> Via Portland, Bryant's Pond, Andover, South Arm, Upper Dam, Middle Dam, Sunday Cove, Errol Dam to Dixville Notch. Returning same way.	<b>\$19.50</b>

## Excursions to the Rangeley Lakes.

29

**BOSTON to UPPER DAM and return.**

*Form 2964.* Via Portland, No. Stratford, Colebrook, Dixville Notch, Errol Dam, Sunday Cove, Middle Dam to Upper Dam. Returning same way..... **\$21.50**

**BOSTON to UPPER DAM and return.**

*Form 2965.* Via Portland, Bethel, Upton, Sunday Cove Middle Dam to Upper Dam. Returning same way..... **\$15.50**

**BOSTON to UPPER DAM and return.**

*Form 2968.* Via Portland, Bryant's Pond, Andover, South Arm, Upper Dam, Middle Cove, Sunday Cove, Upton, Bethel and Portland..... **\$15.00**

**BOSTON to UPPER DAM and return.**

*Form 2969.* Reverse of 2968..... **\$15.00**

**BOSTON to UPPER DAM and return.**

*Form 2984.* Via Portland, Bryant's Pond, Andover, Arm of Lake..... **\$13.00**

**NOTE.**—The fares as shown in the foregoing Routes on pages 19 to 29, are by **Rail** between Boston and Portland, (unless otherwise specified). If passengers desire to go by Steamer, the fares will be **\$1.00** less.

The Portland Steam Packet Company's favorite Side-wheel Steamers, "**John Brooks**" and "**Forest City**," form a daily line, — leaving India Wharf, Boston, every evening at **7.00 P.M.**, and Franklin Wharf, Portland, every evening at **7.00 P.M.**, Sundays excepted.

Passengers to or from Lewiston, Poland Springs, the White Mountains, Montreal, Quebec, &c., via the Grand Trunk Railway, will find this a pleasant as well as a favorite route, whereby they can enjoy a comfortable night's rest, beside the additional enjoyment of one of the finest ocean trips on the Eastern coast, and arrive at both Portland and Boston in season to connect with the early trains.

Baggage is transferred at Portland from the Steamboat Wharf to the Grand Trunk Railway Depot "free," and without any trouble to passengers.

In addition to the Excursion Routes published on pages 19 to 29, a variety of other routes can be made by combining the forms. We will give our special attention to this, and to furnishing information, rates, &c., for any trip required.

# EXCURSION RATES

—FROM—

## PORTLAND.

<b>PORTLAND to BETHEL, Me., and return.....</b>	<b>\$4.50</b>
“ <b>BRYANT'S POND, Me., and return ....</b>	<b>4.00</b>
“ <b>COLEBROOK and return. Form 3013....</b>	<b>10.00</b>
“ <b>DIXVILLE NOTCH and ret. Form 2057.</b>	
“ <b>DIXVILLE NOTCH and ret. Form 3011.</b>	<b>12.25</b>
“ <b>DIXVILLE NOTCH and ret. Form 3012.</b>	<b>12.25</b>
“ <b>GLEN HOUSE and return. Form X 203..</b>	<b>8.00</b>
“ <b>GORHAM, Me., and return .....</b>	<b>5.00</b>
“ <b>INDIAN ROCK and return. Form 2985..</b>	<b>12.25</b>
“ <b>INDIAN ROCK and return. Form 3163..</b>	<b>14.25</b>
“ <b>INDIAN ROCK and return. Form 3164..</b>	<b>13.25</b>
“ <b>INDIAN ROCK and return. Form 3165..</b>	<b>13.25</b>
“ <b>LEWISTON, Me., and return .....</b>	<b>1.60</b>
“ <b>LONDON and return .....</b>	<b>25.00</b>
“ <b>MAGALLOWAY and return. Form 2968..</b>	<b>11.50</b>
“ <b>MAGALLOWAY and return. Form 3009..</b>	<b>13.50</b>
“ <b>MIDDLE DAM and return. Form 2883..</b>	<b>10.00</b>
“ <b>MIDDLE DAM and return. Form 3160..</b>	<b>11.50</b>
“ <b>MIDDLE DAM and return. Form 3161..</b>	<b>10.75</b>
“ <b>MIDDLE DAM and return. Form 3162..</b>	<b>10.75</b>
“ <b>MONTREAL and return. Form X 204....</b>	<b>12.50</b>
“ <b>NEW GLOUCESTER, Me., and return.</b>	<b>1.25</b>
“ <b>NO. STRATFORD and return .....</b>	<b>8.00</b>
“ <b>POINT LEVI and return .....</b>	<b>14.15</b>
“ <b>QUEBEC and return. Form X 205.....</b>	<b>15.00</b>
“ <b>RANGELEY OUTLET and ret. Form 2986</b>	<b>12.25</b>
“ <b>RANGELEY OUTLET and ret. Form 2987</b>	<b>12.25</b>
“ <b>SARNIA and return... ..</b>	<b>28.00</b>
“ <b>SOUTH ARM and return. Form 3010....</b>	<b>9.00</b>
“ <b>SO. PARIS, Me., and return .....</b>	<b>3.15</b>
“ <b>UMBAGOG LAKE and return. Form 2917</b>	<b>8.00</b>
“ <b>UPPER DAM and return. Form 2300 ....</b>	<b>14.75</b>
“ <b>UPPER DAM and return. Form 2801 ....</b>	<b>14.75</b>
“ <b>UPPER DAM and return. Form 2802 ....</b>	<b>17.50</b>
“ <b>UPPER DAM and return. Form 2964 ....</b>	<b>18.50</b>
“ <b>UPPER DAM and return. Form 2965 ....</b>	<b>13.00</b>
“ <b>UPPER DAM and return. Form 2968 ....</b>	<b>12.00</b>
“ <b>UPPER DAM and return. Form 2969 ....</b>	<b>12.00</b>
“ <b>UPPER DAM and return. Form 2984 ....</b>	<b>11.00</b>
“ <b>YARMOUTH, Me., and return .....</b>	<b>.50</b>



# SOUTH SHORE LINE

— BETWEEN —

Charlotte (Port of Rochester), Oswego, Kingston,  
Clayton, Round Island, Thousand Island Park,  
Alexandria Bay, Brockville, Prescott, &c.

THE FINE  
COMPOSITE  
STEAMER

“MAGNET,” CAPTAIN  
CAMERON,

WILL LEAVE

Charlotte on Mondays, Wednesdays & Saturdays

AT 5.30 O’CLOCK, P.M.,

Or on arrival of the New York Central Train leaving Niagara  
Falls at 1.45 P.M., calling at the above places,

— PASSING THROUGH THE —

## THOUSAND ISLANDS

BY THE AMERICAN CHANNEL,

Connecting at PRESCOTT with the

SPLENDID  
RIVER  
STEAMER

“CULTIVATEUR,” CAPTAIN  
COLLETTE.

— RUNNING ALL THE —

## RAPIDS OF THE ST. LAWRENCE,

— PASSING UNDER THE —

## GREAT VICTORIA BRIDGE,

Arriving at MONTREAL at 6 o'clock, P.M., going alongside the  
Magnificent Steamers,

“QUEBEC” AND “MONTREAL,”

TO TRANSFER PASSENGERS FOR

QUEBEC, THE SAGUENAY RIVER & MARITIME PROVINCES.

\$4.50  
4.00  
10.00

12.25  
12.25  
8.00  
5.00

12.25  
14.25  
13.25  
13.25

1.60  
25.00  
11.50  
13.50

10.00  
11.50  
10.75  
10.75

12.50  
1.25  
8.00

14.15  
15.00  
12.25  
12.25

28.00  
9.00  
3.15  
8.00

14.75  
14.75  
17.50  
18.50

13.00  
12.00  
12.00  
11.00

.50

TRAINS LEAVE  
**NIAGARA FALLS**  
**AT 10.00 A.M.,**

Daily, Sundays excepted, arriving at LEWISTON, at 11.00, where passengers are taken by Steamer across Lake Ontario to TORONTO, connecting there with the

**ROYAL MAIL LINE OF STEAMERS,**

which leave HAMILTON at 9.00 A.M., and TORONTO at 2.00 P.M. These Steamers sail along the Northern Shore of Lake Ontario, passing by

**THE THOUSAND ISLANDS,**

and SHOOTING the RAPIDS of the ST. LAWRENCE, and arrive at MONTREAL at 6.15 P.M. the following day. There going alongside the Company's Magnificent IRON STEAMERS.

**“QUEBEC,” “MONTREAL,”**

Capt. NELSON.

Capt. BURN.

TRANSFERRING PASSENGERS FOR QUEBEC,

Leaving 7 o'clock, and arriving at Quebec next morning at 6 o'clock,

Connecting there with the Steamers for the

**FAR-FAMED RIVER SAGUENAY.**

THIS MAGNIFICENT LINE,

Composed of the following First-class Composite Side-Wheel Steamers, viz.:

— BETWEEN —

**HAMILTON AND MONTREAL,**

CORSICAN,	Capt. SINCLAIR.	PASSPORT,	Capt. IRVINE.
SPARTAN,	“ BAILEY.	ALGERIAN (new),	“ TROWELL
CORINTHIAN,	“ ADA.	MAGNET,	“ CAMERON

Leave HAMILTON (DAILY, SUNDAYS EXCEPTED), at 9.00 A.M.

— AND —

**TORONTO at 2 P.M.**

ON THE ARRIVAL OF THE STEAMERS AND PASSENGERS FROM

**NIAGARA FALLS.**

# BLANCHARD'S STAGE LINE.

THE ONLY FIRST-CLASS LINE OF STAGES BETWEEN

## NORTH STRATFORD & COLEBROOK OR CANAAN.

SIX-HORSE CONCORD COACHES make Two  
Daily Trips each way (Sundays excepted,)  
in connection with trains on

## GRAND TRUNK RAILWAY.

### CONNECTIONS.

- At **NORTH STRATFORD**, with Grand Trunk Ry. for all points East and West.
- At **COLEBROOK**, with Bailey's Stages for Dixville Notch and Errol Dam.
- At **ERROL DAM**, with Steamers for Magalloway River, Parmachenee Lake, Upton, Middle Dam, Upper Dam, Indian Rock, and all points in the Rangeley Lake Region.
- At **CANAAN**, with Stages for Connecticut Lake and points North.
- At **FIRST CONNECTICUT LAKE**, with Steamers to all points on the Lake.

### FARES.

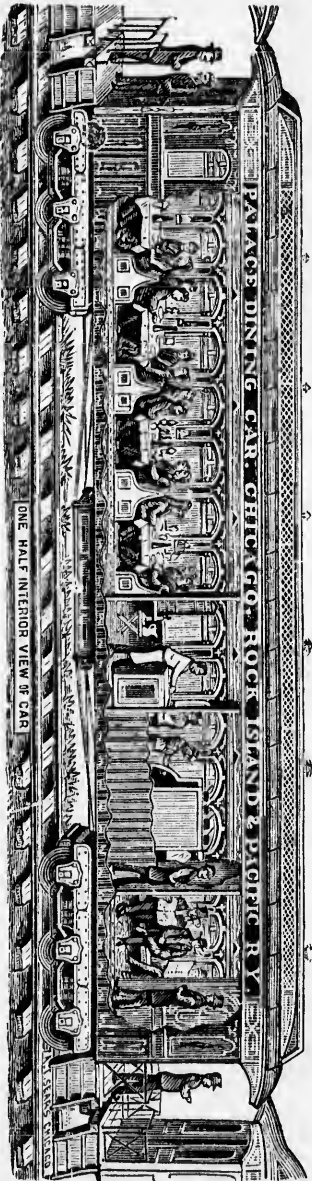
North Stratford to Colebrook... ..\$1.00  
Colebrook to Canaan..... .75

Round Trip Tickets for sale at all principal Railroad Offices  
in New England.

HIRAM BLANCHARD, Prop'r.

# "THE GREAT ROCK ISLAND ROUTE."

We run Palace Sleeping Cars for Sleeping purposes, and Dining Cars for Eating purposes only.  
 Seventy-Five Cents pays for an entire Meal. Do not confound these Cars with Hotel Cars.



## THE CHICAGO, ROCK ISLAND & PACIFIC RY.

Between CHICAGO and COVINGTON BLUFFS, KANSAS CITY, ATCHAFONSON, LEAVENWORTH, MINNEAPOLIS and ST. PAUL, is the GREAT STEEL LINK in the NIGHTY CHAIN stretching across the Continent from the Atlantic to the Pacific.  
 Two Through Express Trains each way are run over its perfect track, and every appliance for the safety and comfort of its patrons is provided.  
 PULLMAN PALACE SLEEPING COACHES, J. & N. THROUGH, and to all Express Trains is attached one of those FAMOUS PALACE DINING CARS for which this Great Route has become famous.  
 This is The Only Half-land Owned by One Company, Running Through Cars from Chicago into the State of Kansas Without Change. Its connections are made in Union Depots, and its Tickets are sold at all Coupon Ticket Offices.

R. R. CABLE, *Vice Presd. and Genl. Manager.*

E. ST. JOHN, *Genl. Tkt. and Pass. Agt., Chicago.*

THE DIRECT AND POPULAR ROUTE FOR ALL POINTS IN

Minnesota, Dakota and Manitoba, Kansas, New Mexico, Utah,  
 Montana, California and Oregon.  
 W. H. JENNEY, *New England Passenger Agent, 15 State Street, Boston, Mass.*

If you are going to Kansas, Nebraska, Colorado, New Mexico, Arizona, Wyoming, Utah, Montana, Dakota, Nevada, Oregon, California, China or Japan, ask for Tickets via the "GREAT ROCK ISLAND ROUTE."

