

**CIHM  
Microfiche  
Series  
(Monographs)**

**ICMH  
Collection de  
microfiches  
(monographies)**



**Canadian Institute for Historical Microreproductions / Institut canadien de microreproductions historiques**

**© 1998**

## Technical and Bibliographic Notes / Notes techniques et bibliographiques

The Institute has attempted to obtain the best original copy available for filming. Features of this copy which may be bibliographically unique, which may alter any of the images in the reproduction, or which may significantly change the usual method of filming are checked below.

- Coloured covers / Couverture de couleur
- Covers damaged / Couverture endommagée
- Covers restored and/or laminated / Couverture restaurée et/ou pelliculée
- Cover title missing / Le titre de couverture manque
- Coloured maps / Cartes géographiques en couleur
- Coloured ink (i.e. other than blue or black) / Encre de couleur (i.e. autre que bleue ou noire)
- Coloured plates and/or illustrations / Planches et/ou illustrations en couleur
- Bound with other material / Relié avec d'autres documents
- Only edition available / Seule édition disponible
- Tight binding may cause shadows or distortion along interior margin / La reliure serrée peut causer de l'ombre ou de la distorsion le long de la marge intérieure.
- Blank leaves added during restorations may appear within the text. Whenever possible, these have been omitted from filming / Il se peut que certaines pages blanches ajoutées lors d'une restauration apparaissent dans le texte, mais, lorsque cela était possible, ces pages n'ont pas été filmées.
- Additional comments / Commentaires supplémentaires:

L'Institut a microfilmé le meilleur exemplaire qu'il lui a été possible de se procurer. Les détails de cet exemplaire qui sont peut-être uniques du point de vue bibliographique, qui peuvent modifier une image reproduite, ou qui peuvent exiger une modification dans la méthode normale de filmage sont indiqués ci-dessous.

- Coloured pages / Pages de couleur
- Pages damaged / Pages endommagées
- Pages restored and/or laminated / Pages restaurées et/ou pelliculées
- Pages discoloured, stained or foxed / Pages décolorées, tachetées ou piquées
- Pages detached / Pages détachées
- Showthrough / Transparence
- Quality of print varies / Qualité inégale de l'impression
- Includes supplementary material / Comprend du matériel supplémentaire
- Pages wholly or partially obscured by errata slips, tissues, etc., have been refilmed to ensure the best possible image / Les pages totalement ou partiellement obscurcies par un feuillet d'errata, une pelure, etc., ont été filmées à nouveau de façon à obtenir la meilleure image possible.
- Opposing pages with varying colouration or discolourations are filmed twice to ensure the best possible image / Les pages s'opposant ayant des colorations variables ou des décolorations sont filmées deux fois afin d'obtenir la meilleure image possible.

This item is filmed at the reduction ratio checked below /  
Ce document est filmé au taux de réduction indiqué ci-dessous.

	10x		14x		18x		22x		26x		30x	
	12x		16x		20x		24x		28x		32x	

(Note: The 24x box in the second row is checked with a tick mark.)

The copy filmed here has been reproduced thanks to the generosity of:

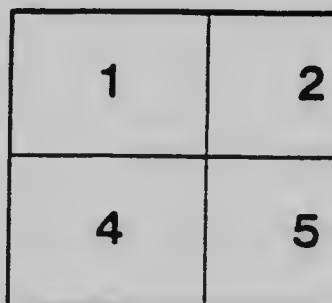
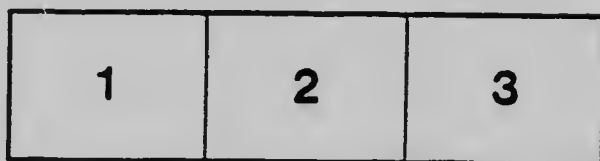
National Library of Canada

The images appearing here are the best quality possible considering the condition and legibility of the original copy and in keeping with the filming contract specifications.

Original copies in printed paper covers are filmed beginning with the front cover and ending on the last page with a printed or illustrated impression, or the back cover when appropriate. All other original copies are filmed beginning on the first page with a printed or illustrated impression, and ending on the last page with a printed or illustrated impression.

The last recorded frame on each microfiche shall contain the symbol  $\rightarrow$  (meaning "CONTINUED"), or the symbol  $\nabla$  (meaning "END"), whichever applies.

Maps, plates, charts, etc., may be filmed at different reduction ratios. Those too large to be entirely included in one exposure are filmed beginning in the upper left hand corner, left to right and top to bottom, as many frames as required. The following diagrams illustrate the method:



L'exemplaire filmé fut reproduit grâce à la générosité de:

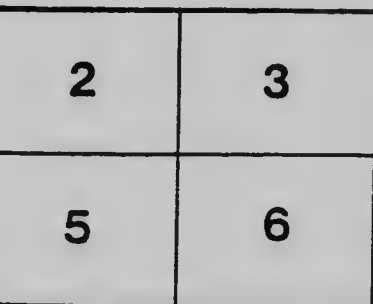
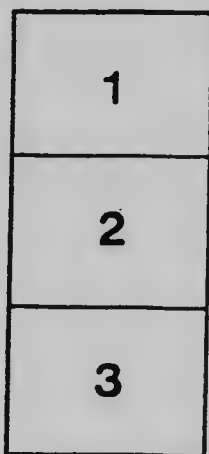
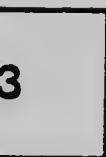
Bibliothèque nationale du Canada

Les images suivantes ont été reproduites avec le plus grand soin, compte tenu de la condition et de la netteté de l'exemplaire filmé, et en conformité avec les conditions du contrat de filmage.

Les exemplaires originaux dont la couverture en papier est imprimée sont filmés en commençant par le premier plat et en terminant soit par la dernière page qui comporte une empreinte d'impression ou d'illustration, soit par le second plat, selon le cas. Tous les autres exemplaires originaux sont filmés en commençant par la première page qui comporte une empreinte d'impression ou d'illustration et en terminant par la dernière page qui comporte une telle empreinte.

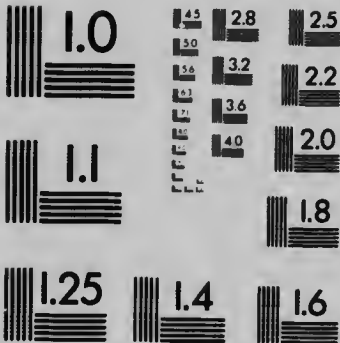
Un des symboles suivants apparaîtra sur la dernière image de chaque microfiche, selon le cas: le symbole  $\rightarrow$  signifie "A SUIVRE", le symbole  $\nabla$  signifie "FIN".

Les cartes, planches, tableaux, etc., peuvent être filmés à des taux de réduction différents. Lorsque le document est trop grand pour être reproduit en un seul cliché, il est filmé à partir de l'angle supérieur gauche, de gauche à droite, et de haut en bas, en prenant le nombre d'images nécessaire. Les diagrammes suivants illustrent la méthode.



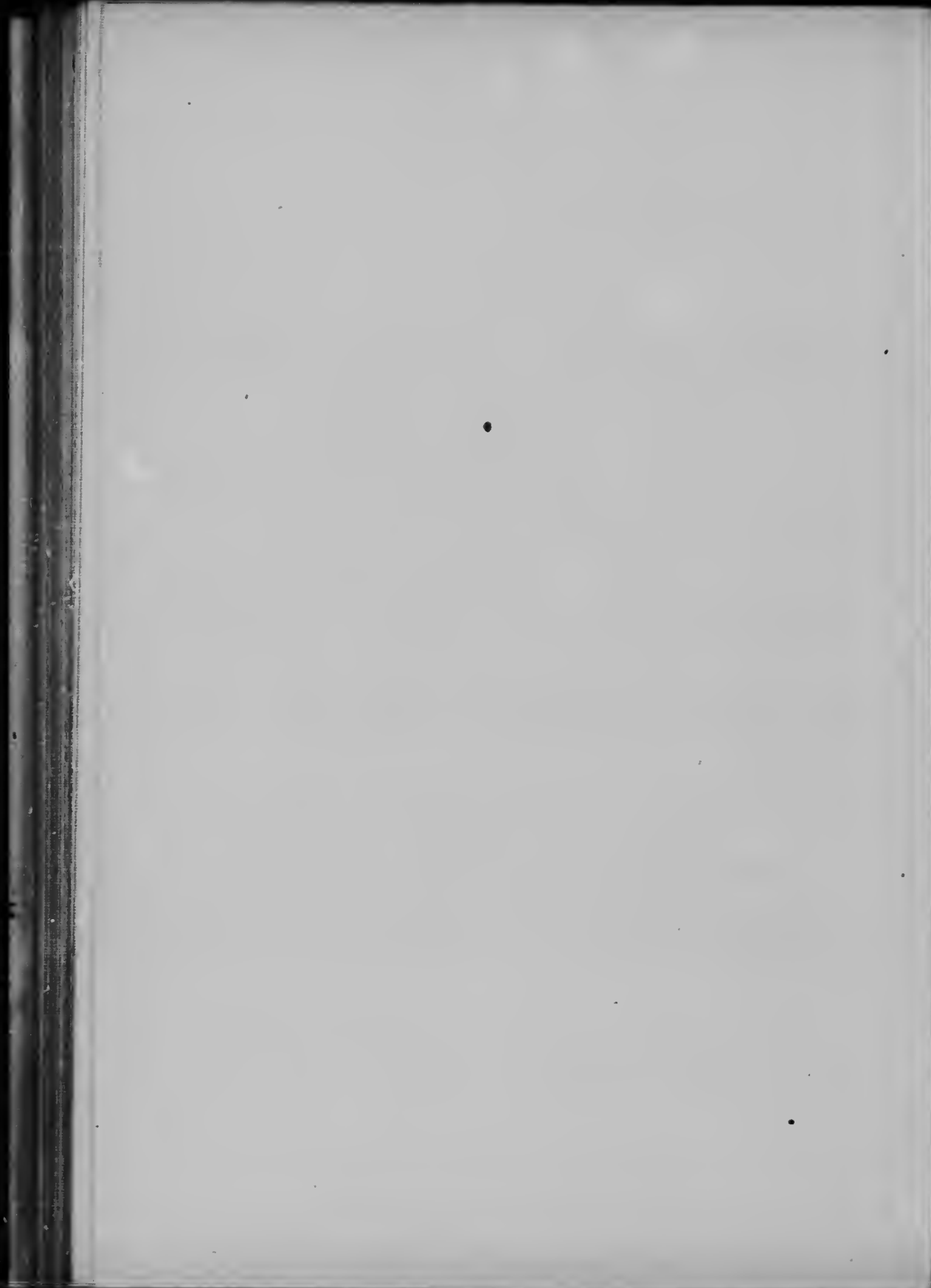
# MICROCOPY RESOLUTION TEST CHART

(ANSI and ISO TEST CHART No. 2)



**APPLIED IMAGE Inc**

1653 East Main Street  
Rochester, New York 14609 USA  
(716) 482 - 0300 - Phone  
(716) 288 - 5989 - Fax



O. H. M. S.

*W. J. Gerald*  
Deputy Minister.

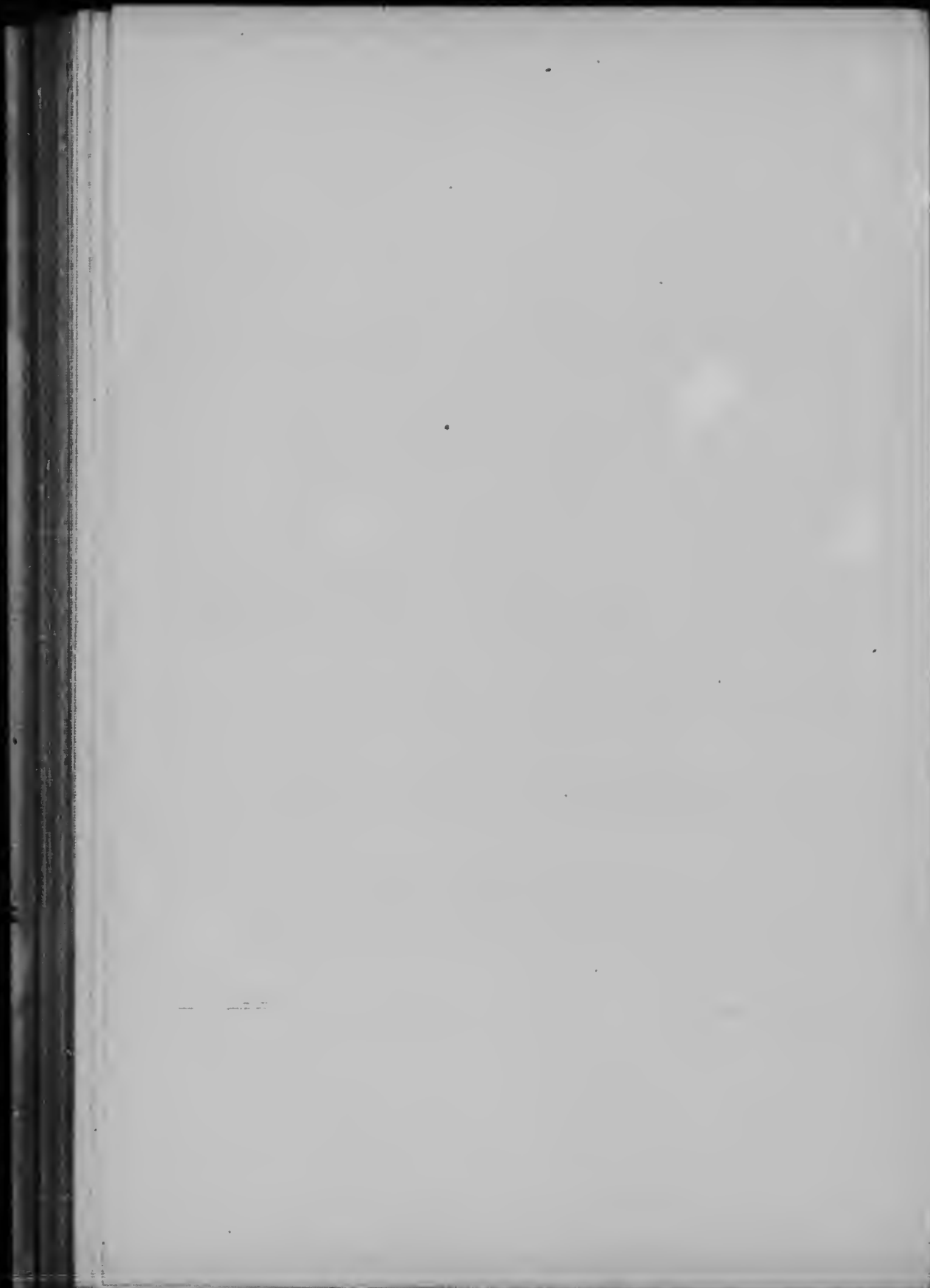
---

---

LABORATORY  
OF THE  
INLAND REVENUE DEPARTMENT  
OTTAWA, CANADA  
BULLETIN No 133  
BUTTER, 1907

---

---





LABORATORY  
OF THE  
INLAND REVENUE DEPARTMENT  
OTTAWA, CANADA

BULLETIN No. 133

BUTTER, 1907

OTTAWA, April 16, 1907.

W. J. GERALD, Esq.,  
Deputy Minister of Inland Revenue.

SIR,—On the 30th January last I had the honour of reporting to you the results of analysing 101 samples of butter collected in 1906 (Bulletin No. 131) and of pointing out that two of these consisted almost exclusively of foreign fat and that apparently attempts were being made either to manufacture or to import into Canada oleomargarine, in contravention of the provisions of the Butter Act, 1903. On account of the small number of these adulterated samples compared with those found genuine (about 1 in 50) and the uselessness of expending analytical work upon the unadulterated samples the suggestion was made by Mr. A. McGill, Assistant Analyst to the Chief Analyst, that a larger number of butter samples should be collected, but that the fats from these should first be tested as to their refractive index, and only those butters subjected to further examination which gave unsatisfactory results in this particular. This plan appeared to me to have great advantages and after it had obtained your approval, orders were issued to collect samples in all the food inspection districts of the Dominion, the total number of samples being 1,000. As the examination progressed however it was found that the adulterated samples came exclusively from the Province of Quebec, and therefore the orders for some of the Western inspection districts were cancelled before the full number first required had been obtained. The number collected and subjected to examination under the Refractometer, and the results of this examination are shown in the following statement:—

Name of District.	Genuine.	Doubtful.	Containing Foreign fat.	Total Number collected.
Nova Scotia . . . . .	50	0	0	50
Prince Edward Island . . . . .	50	0	0	50
New Brunswick . . . . .	50	0	0	50
Quebec . . . . .	106	0	6	112
St. Hyacinthe . . . . .	150	0	0	150
Montreal . . . . .	198	0	2	200
Ottawa . . . . .	49	1	0	50
Kingston . . . . .	46	4	0	50
Toronto . . . . .	100	0	0	100
London . . . . .	50	0	0	50
Manitoba . . . . .	7	0	0	7
British Columbia . . . . .	12	0	0	12
	868	5	8	881

The samples thus found to be adulterated with foreign fat from mere testing by the Butyro refractometer were the following:—

Date of Collection.	No. of Sample.	Name and Address of Vendor.	Name of Furnisher as given by Vendor.	Reading of Butyro-refractometer at 25° C. by A. McGill and Miss R. Davidson.
1907.				
Jan. 15	26098	Elz. Couture, 124 Caron St., Quebec.	Emond & Côté, Quebec.....	58°3'58"8.
" 17	26105	L. Letourneau, 33 Smith St., Quebec.	Oct. Jacques & Cie, Quebec.	57°5'57"6.
" 25	26151	F. Delisle, 131 Hermine St., Quebec.	Emond & Côté, Quebec.....	57°5'.
" 25	26152	Dame N. L. Pouliot, 96 Kirouack St., Quebec.	" " .....	57°8'.
" 29	26157	J. E. Julien, 1168 St. Valier St., Quebec.	Not known.....	57°0'.
" 30	26166	F. Hebert, 191 St. Germain St., Quebec.	Emond & Côté, Quebec.....	57°5'.
" 9	31732	H. Delorme, 253 Gain St., Montreal.	Not known.....	57°8'58"0.
" 15	31806	G. Bertrand, 1742 St. Catherine East, Montreal.	W. Champagne, Montreal...	57°3'.

These eight samples were then submitted to the District analyst, Dr. J. T. Donald, Montreal, for further examination along with two of the doubtful ones, namely No. 26176 the refractive index of which was 54° and No. 31721 whose index of 48°49' had been found exceptionally low. The readings in the case of the genuine samples at 25°C. were mostly about 52°, ranging from 49°5' to 53°3'. The analyses by Dr. Donald resulted as follows:—

No of Sample.	Vendor.	Moisture.	Fat.	Salt.	Curd.	Reichert—Meissl Value.	Specific gravity of fat at 100°C.	Opinion.
		p. c.	p. c.	p. c.	p. c.	No.		
26098	E. Couture.....	6.06	90.03	1.92	1.41	1.6	903.8	Adulterated, containing little if any butter fat.
26105	L. Letourneau...	8.32	85.81	3.44	1.60	1.4	895.6	" "
26151	F. Delisle.....	5.67	87.19	4.75	1.55	1.3	899.2	" "
26152	Dame Pouliot...	7.11	88.94	2.61	0.53	1.5	898.4	" "
26157	J. E. Julien.....	5.56	89.38	2.64	1.64	1.2	914.0	" "
26166	F. Hebert.....	5.83	89.00	3.08	1.19	1.2	909.0	" "
26176	H. Lapointe...	14.19	73.09	10.77	0.99	25.5	904.6	Genuine but High in salt.
31731	L. Allaire.....	10.55	86.15	2.21	1.08	27.6	907.7	Genuine.
31732	H. Delorme.....	5.80	90.05	2.22	1.39	2.0	900.0	Adulterated, containing little if any butter fat.
31806	G. Bertrand...	4.90	92.89	1.96	0.24	2.5	896.9	" "

I have the honour to be, sir,  
Your obedient servant,

THOMAS MACFARLANE,  
Chief Analyst.



