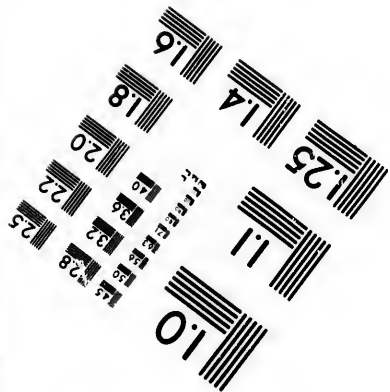
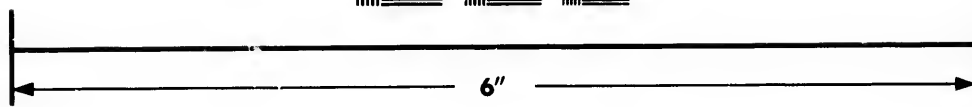
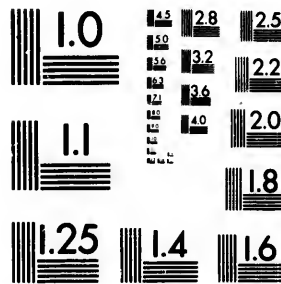


**IMAGE EVALUATION
TEST TARGET (MT-3)**



**Photographic
Sciences
Corporation**

23 WEST MAIN STREET
WEBSTER, N.Y. 14580
(716) 872-4503

1.5 1.8 2.0 2.2 2.5
2.8 3.2 3.6 4.0 4.5

**CIHM/ICMH
Microfiche
Series.**

**CIHM/ICMH
Collection de
microfiches.**



Canadian Institute for Historical Microreproductions / Institut canadien de microreproductions historiques

1.0 1.5 2.0 2.5 3.0 3.5 4.0 4.5 5.0

© 1983

Technical and Bibliographic Notes/Notes techniques et bibliographiques

The Institute has attempted to obtain the best original copy available for filming. Features of this copy which may be bibliographically unique, which may alter any of the images in the reproduction, or which may significantly change the usual method of filming, are checked below.

L'Institut a microfilmé le meilleur exemplaire qu'il lui a été possible de se procurer. Les détails de cet exemplaire qui sont peut-être uniques du point de vue bibliographique, qui peuvent modifier une image reproduite, ou qui peuvent exiger une modification dans la méthode normale de filmage sont indiqués ci-dessous.

Coloured covers/
Couverture de couleur

Covers damaged/
Couverture endommagée

Covers restored and/or laminated/
Couverture restaurée et/ou pelliculée

Cover title missing/
Le titre de couverture manque

Coloured maps/
Cartes géographiques en couleur

Coloured ink (i.e. other than blue or black)/
Encre de couleur (i.e. autre que bleue ou noire)

Coloured plates and/or illustrations/
Planches et/ou illustrations en couleur

Bound with other material/
Relié avec d'autres documents

Tight binding may cause shadows or distortion
along interior margin/
La reliure serrée peut causer de l'ombre ou de la
distortion le long de la marge intérieure

Blank leaves added during restoration may
appear within the text. Whenever possible, these
have been omitted from filming/
Il se peut que certaines pages blanches ajoutées
lors d'une restauration apparaissent dans le texte,
mais, lorsque cela était possible, ces pages n'ont
pas été filmées.

Additional comments:/
Commentaires supplémentaires:

Coloured pages/
Pages de couleur

Pages damaged/
Pages endommagées

Pages restored and/or laminated/
Pages restaurées et/ou pelliculées

Pages discoloured, stained or foxed/
Pages décolorées, tachetées ou piquées

Pages detached/
Pages détachées

Showthrough/
Transparence

Quality of print varies/
Qualité inégale de l'impression

Includes supplementary material/
Comprend du matériel supplémentaire

Only edition available/
Seule édition disponible

Pages wholly or partially obscured by errata
slips, tissues, etc., have been refilmed to
ensure the best possible image/
Les pages totalement ou partiellement
obscurcies par un feuillet d'errata, une pelure,
etc., ont été filmées à nouveau de façon à
obtenir la meilleure image possible.

This item is filmed at the reduction ratio checked below/
Ce document est filmé au taux de réduction indiqué ci-dessous.

10X	14X	18X	22X	26X	30X
<input type="checkbox"/>	<input type="checkbox"/>	<input type="checkbox"/>	<input checked="" type="checkbox"/>	<input type="checkbox"/>	<input type="checkbox"/>
12X	16X	20X	24X	28X	32X

The copy filmed here has been reproduced thanks to the generosity of:

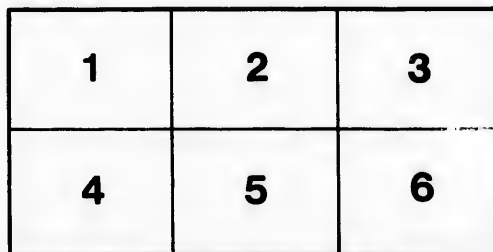
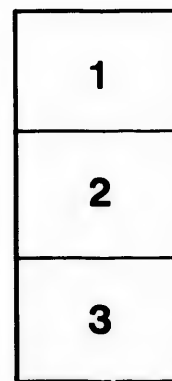
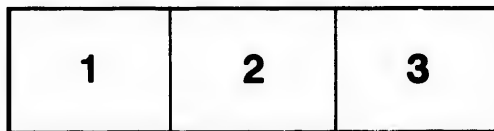
Library of Congress
Photoduplication Service

The images appearing here are the best quality possible considering the condition and legibility of the original copy and in keeping with the filming contract specifications.

Original copies in printed paper covers are filmed beginning with the front cover and ending on the last page with a printed or illustrated impression, or the back cover when appropriate. All other original copies are filmed beginning on the first page with a printed or illustrated impression, and ending on the last page with a printed or illustrated impression.

The last recorded frame on each microfiche shall contain the symbol \rightarrow (meaning "CONTINUED"), or the symbol ∇ (meaning "END"), whichever applies.

Maps, plates, charts, etc., may be filmed at different reduction ratios. Those too large to be entirely included in one exposure are filmed beginning in the upper left hand corner, left to right and top to bottom, as many frames as required. The following diagrams illustrate the method:



L'exemplaire filmé fut reproduit grâce à la générosité de:

Library of Congress
Photoduplication Service

Les images suivantes ont été reproduites avec le plus grand soin, compte tenu de la condition et de la netteté de l'exemplaire filmé, et en conformité avec les conditions du contrat de filmage.

Les exemplaires originaux dont la couverture en papier est imprimée sont filmés en commençant par le premier plat et en terminant soit par la dernière page qui comporte une empreinte d'impression ou d'illustration, soit par le second plat, selon le cas. Tous les autres exemplaires originaux sont filmés en commençant par la première page qui comporte une empreinte d'impression ou d'illustration et en terminant par la dernière page qui comporte une telle empreinte.

Un des symboles suivants apparaîtra sur la dernière image de chaque microfiche, selon le cas: le symbole \rightarrow signifie "A SUIVRE", le symbole ∇ signifie "FIN".

Les cartes, planches, tableaux, etc., peuvent être filmés à des taux de réduction différents. Lorsque le document est trop grand pour être reproduit en un seul cliché, il est filmé à partir de l'angle supérieur gauche, de gauche à droite, et de haut en bas, en prenant le nombre d'images nécessaire. Les diagrammes suivants illustrent la méthode.

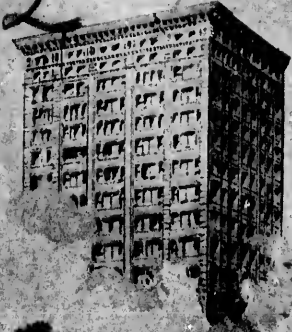
53

97



530
97

The Legacy
of Père Marquette



THE MARQUETTE PUBLISHING CO.
1749 MARQUETTE BUILDING.

The Legend and the Legacy of Pere Marquette

Copyrighted

1897 by...WALTER R. NURSEY
RALPH D. CLEVELAND and
J. H. A. MIROSKY



22083

Prefatory Note: Many spurious publications have been issued in the names of Joliet and Tonti, and even Marquette's own narrative, first printed by Thervenot at Paris in 1731, has been badly garbled in translation. It may be well to state that in this epitome of the story of the discovery of the Mississippi and the part jointly taken by Joliet and Marquette, none but well established authorities have been recognized. For verification's sake over forty volumes of what may be rightly considered text-book literature have been consulted. Where research has revealed conflicting statements, the rank of the authority as well as the preponderance of the printed testimony have been equally considered.

PRINTED AT THE
MARSH & GRANT PRESS
333 DEARBORN STREET
CHICAGO

THE MARQUETTE PUBLISHING COMPANY,

Publishers,
1749 Marquette Building....CHICAGO.

F1030
2
N97

the
own
731,
ome
liet
For
ook
nts,
ave



~~48433022~~

F1030

2

.N97



Pere Jacques Marquette

Father James Marquette, born at Laon, France, 1637. In 1668 established with Father Dablon the Jesuit Mission of Ste. Marie du Saut, and that of Michillimackinac and Ste. Ignace in 1671. Together with Joliet discovered the Upper Mississippi, June 17th, 1673, and descended the river as far as its point of confluence with the Arkansas. Died on his return journey to Mackinac from Kaskaskia, May 18th, 1675. Marquette spoke fluently six Indian languages, and combined a gentle and noble nature—more like that of a medieval saint—with the biggest order of courage, and "though a Catholic was not the exclusive property of that people—he belongs alike to all."



Steur Louis Joliet

Born in Quebec, 1645. Educated for the Jesuit priesthood, but later became a fur-trader. A skilled navigator and surveyor. Joint discoverer with Marquette of the Mississippi. Explorer of the Saguenay, the St. Lawrence, Labrador and Hudson Bay. Little is recorded of Joliet's later days after he retired to the Island of Miquan, where he died in 1700.

The Legend and the Legacy of Père Marquette.



.....The Legend:



URING the second decade of the XVIth century, within the swart wilderness of equatorial America, if the chronicles of the day are to be depended upon, Cortez, Pizarro, Valdivia and Quesada instituted a period of exploration such as had never before been seen, nor since witnessed. After the exploitation of Nicaragua, Guatemala, Yucatan, New Colombia and Bolivia, the subjection of well-nigh all of Latin America comprised within the torrid zone was at last accomplished by the valorous, if too blood thirsty, legions of aggressive Spain.

Infected by the spirit of adventure then rampant and flushed with his conquests in Peru, Ferdinand de Soto, the wealthy governor of Cuba, gazed possessingly across the heaving wastes of the Atlantic and allowed his imagination to run riot over the untraversed region watered by the mysterious flood of the Mississippi. On the northern littoral of the Mexican Gulf, the vast delta of the Rio del Esperitu de Santo, with



Frontenac

Louis de Buade, Count of Palluau and Frontenac. Governor of New France (Canada), 1672.

a reputed volume far in excess of that of either Amazon or Orinoco, presented a strangely fascinating field for investigation. There was nothing, therefore, surprising in the fact that in 1542 De Soto, inflamed by the gilded gossip of the times, landed an armed force on the coast of Florida and, undaunted, struck out boldly for the unknown wilds of the interior.

Confronted by impenetrable thicket and bottomless morass, tumultuous rivers and by hosts of painted savages, he fought his way with sword and fagot until, at Guachoya, on the reedy banks of the never diminishing stream, above its confluence with the Arkansas, almost a thousand navigable miles from its emptying place, he yielded his life, a sacrifice to his love for conquest and for greed. With the exception of the return expedition led by Muscoco in 1543, the survivor of De Soto, who built seven brigantines to convey his 322 followers "down the great river to the gulf," Spanish exploitation of the Father of Waters ceased, and the old black curtain of impenetrability partially lifted and but for a moment, again fell and hid from the eyes of amazed cupidity the beckoning interior.

Notwithstanding this abandonment of the lower valley of the Mississippi, the advent of the XVIIth century gave a new stimulus and from another quarter to American exploration. Contemporary with the founding of Quebec by Champlain, in 1608, was the establishment of the order of the Recollect Friars and the ascent of the Ottawa river, and in 1616, the transit of Lake Huron by the priestly adventurer, Le Caron, a Franciscan monk. While this unlocking of the Northwest and the proselytizing of the Redskin was checked by the conquest of Canada by the English in 1629, the interruption was brief, for in 1632 Brebeuf and Daniel explored the Saguenay—carried the flag of civilization from the buttresses of Quebec to the bleak beaches of far Ungava, and on the umbrageous shores of Lake Iroquois established the village of St. Ignatius. Five years before Elliot of New England had addressed one word of pious exhortation to the Indians camped within six miles of Boston harbor, Jogues and Raymbaut had planted the cross at the foot of Lake Superior and preached the gospel of salvation within the smoky lodges of the implacable Sioux.

DEPARTURE OF MARQUETTE AND JOLIET FROM ST. IGNACE ON THEIR
FIRST VOYAGE TO THE ILLINOIS.



"Firmly resolved to do all and suffer all for so glorious an enterprise."
—Marquette's Journal



Early in 1634 Sieur Jean Nicolet, a geographical reformer who expected to find the China Sea in Green Bay, captained a pacific expedition beyond the western limits of the Algonquin race into the heart of Winnebago-land. He camped at the palisaded town of Mascoutins, and was the first white explorer to penetrate northwest of the Ohio and reach the Wisconsin river. Upon the outbreak of the Iroquois war in 1650 the snow in the forests of Canada was crimson with the blood of the missionaries, and for the next ten years priest and proselyte, explorer and coureur de bois awaited with folded arms the proclamation of peace. During 1660 the Jesuit Father René Mesnard, accompanied by Radisson and Groseilliers, a brace of dare-devil fur traders, discovered the Pictured Rocks, the copper mines at Keeweenaw and camped on Chequamegon Bay (Ashland, Wisconsin). But the too-trusting Mesnard was soon tomahawked by the savages amid the tenebrous wilds of the Menominee. In 1665 Father Claude Allouez, whose name is imperishably connected with the discoveries in the Northwest, assumed control and the arches of the woods again awoke to the white man's homilies delivered in the Tartar tongue.

The close of 1668 still found Allouez wearing the winter out preaching to tolerant Pottawattomie and surly Kickapoo and overthrowing the pagan idols at the Kahkalin rapids on the Fox, when Father Jacques Marquette, a youthful priest from Sault Ste Marie, unexpectedly arrived upon the scene. The conflicting reports of priest and trapper as to the possibilities of this terra, well-nigh incognita, had aroused the curiosity of prelate and cupidity of layman at Quebec; for the mystery that surrounded these western solitudes was regarded as a scientific imposition. Thus it came about that Claudius Dablon, Superior Generale of the missions of the Society of Jesus, was ordered to the Sault in 1668 for the purpose of establishing in more ways than one the everlasting truth. The narratives of Father Dablon and his missionaries, "The Relations of 1670-71-72," were subsequently published in Paris, together with a map of Lake Superior, and these with the unprinted "Relations of 1672-3 and 1673-9," now form the most valuable collection extant of the early history and topography of the primeval west.

MARQUETTE AND JOLIET LAUNCHING THEIR CANOE ON THE HEADWATERS
OF THE WISCONSIN RIVER.



LC-45262-9012

"To follow those waters * * * which will benecforth lead us into strange lands."

—Marquette's Journal.

Meanwhile Dablon, casting about for a coadjutor, summoned the youthful Marquette of Quebec, a Jesuit priest lately from Laon, France, who on April 21st, 1668, in company with Father Nicholas Louis, had ascended the Ottawa river, descended the French, and crossing tempestuous Lake Orleans (Huron) had forced the red prows of their birch barks through drench and rattle until the frail flotilla rested on the yellow beaches of inviting Mackinaw.

Père Marquette who was nothing if not terribly in earnest, planted his cabin at the foot of the rapid on the American side of the Sault, and, with unequalled zeal as a propagandist, inaugurated such a virile campaign among Algonquins and Sinagaux as to cause them to permanently abate their "lewdness, their sacrifices and their juggleries." His success was such that he was transferred to the Mission of the Holy Ghost at La Pointe, at the western extremity of Lake Superior. A sojourn of a few years among the Chippewas, and Marquette became possessed with the same ambition that had fired Dablon. He thirsted to explore the tributary wilderness and "seek those new nations towards the South Sea still unknown to him and to teach them of his great God." But the insolence of Huron and Ottawa had exasperated the Sioux, and in the bloody war that followed the Hurons being hopelessly defeated, Marquette's cherished hopes for an Illinois mission were dissipated; he retired to Mackinaw, and while devoting his spare moments to a mastery of the Indian tongues, listened to the mystic stories of a river called the Missouri, which his redskin instructors never grew weary of relating. "In the land of the Illinois," said they, "stretches a vast extent of prairie through which flows a great river, greater than that by Quebec; its pumpkins are larger than those of France, and wild cattle, bears, stags, turkeys and wild pigeons, cranes and bustards breed in abundance."

On June 4th, 1672, the French minister wrote Talon, Intendant of Canada, that there was "nothing more important for the colony than the discovery of a passage to the South Sea. His majesty wishes you to give it your attention." Frontenac, the new governor of Nouveau France,



62-9012

urnal.

THE MEETING WITH THE ILLINOIS



"They answered that they were Illinois and in token of peace presented the pipe to smoke."
—Marquette's Journal.

waxed enthusiastic, and November 2d, 1672, instructed the Sieur Louis Joliet, a fur-trader of Quebec and quondam Jesuit priest—"a man of great experience in this kind of exploration"—to "discover the South Sea by the Maskoutens country and the great river Mississippi, which is believed to empty into the California Sea." The choice of a missionary to accompany the explorer lay between Claude Allouez and Jacques Marquette. The joy of the latter may be imagined when on the festival of the Immaculate Conception he received a letter bidding him prepare for the expedition.

May 17th, 1673, Marquette and Joliet embarked on their historic enterprise in two birch canoes with five Miami Indians by way of the Bay of Fetid (Green Bay). The former an envoy of Christendom, clothed in the coarse habit of his order, and presenting with his humble followers a marked contrast to the mail-clad conquistadores of the militant De Soto. Not animated with the spirit of greed backed by fire and fagot, but ambassadors of peace "firmly resolved to do all and suffer all for so glorious an enterprise," and promising, writes Marquette, "that if under the protection of the Blessed Virgin Immaculate they should discover the great river, he would give that name to the first mission he should establish among the new nation." Crossing Lake Winnebago (Oshkosh) they ascended the Fox river June 7th, portaging to the headwaters of the Wisconsin at Mascoutens. Here, with two Miami guides, they re-launched their canoes on the broader courses of the vine-clad stream on the 10th, prepared "to follow those waters which would henceforth lead them into strange lands."

"Launched their birch canoes for sailing;
Shoved them forth into the water;
Whispering to them, 'Westward! Westward!'"

Descending the Wisconsin, past swaying forest and waving beds of rice, they attained the limit of all previous discoveries and gazed in awe upon the wondrous vista of a new world that lay spread before them. For seven days, uninterrupted by man, they exploited an unspeakably



c."
quette's Journal.

MARQUETTE AND JOLIET ATTACKED BY INDIANS ON THE MISSISSIPPI



"In vain I showed the calumet * * * to explain that we had not come as enemies."

—Marquette's Journal.



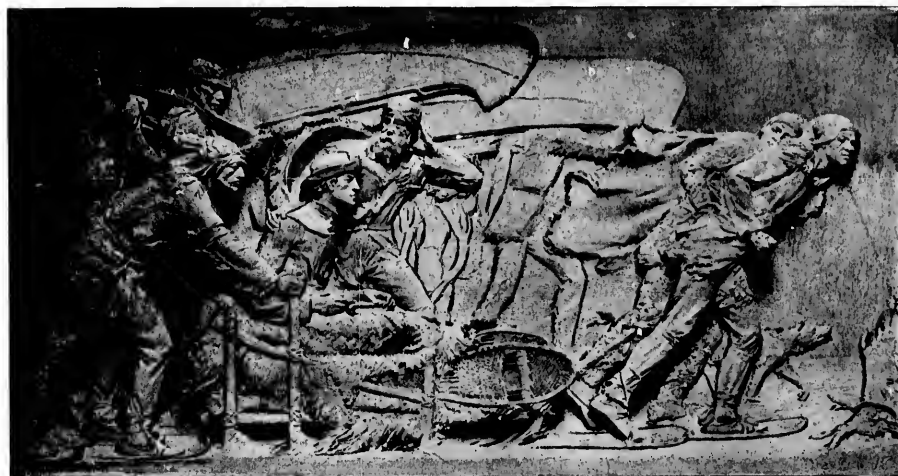
Journal.

beautiful wilderness—the land of the bison and the moose (the bezhiki and ahtik)—until June 17th, when, on rounding a promontory, their canoes, ere they well realized it, were rocking on the turgid bosom of the still greater river—the Father of Waters, “that stretched in glistening majesty for countless miles towards an unknown sea.”

To give in detail the itinerary of these two courageous adventurers would fill a pentateuch. The scant limits of these pages permit but the briefest summary of their accomplishments. On the 25th of June, when nearing the 40th degree of north latitude, they saw footsteps on the river bank. Disembarking, Marquette and Joliet followed the trail through the forest. Suddenly three Indian villages burst upon their sight. Priest and trader halloaed with all their strength, when four old braves advanced, two bearing red calumets—pipes of peace—adorned with feathers of the white eagle and other plumes. “Who are you?” asked Marquette; “We are Illinois”—“The Men”—they answered; “and in token of friendship,” says Marquette, “presented us their pipes to smoke.” Conducted to the residence of the great Sachem, the travellers were assured that “they should enter all the cabins of the tribe in peace.” After “feasting on sagamity and dog-meat,” and being warned of the dangers that confronted them, undeterred they continued the descent of the rolling river.

They passed the Painted Rocks (where Alton now stands), and twenty leagues from the camp of the Illini's reached the junction of the Pekitanoni (Missouri), and twenty leagues further the confluence of the Ouaboukigon (the Ohio); nor tarried until they entered the domain of the warlike Chicachas (Tuscaroras), who showed them rosaries, guns and knives traded with the Spaniards in Florida, and declared they were now but ten days' journey from the sea. At the village of Mitchigamea, near the mouth of the St. Francis, they encountered a hostile tribe armed with arrows, axes and bucklers, who threatened them from their periaguas with every sign of hostility. “In vain,” writes Marquette, “I showed the calumet and made gestures to explain that we had not come as enemies.” Having pacified the Chicachas by “presents and fair words,” they pushed on beyond the confluence of the Arkansas and beached their dripping canoes among the reeds at

ARRIVAL OF MARQUETTE AT THE CHICAGO RIVER



"Passing two leagues up the river we resolved to winter there * * * being detained by my illness."
—*Marquette's Journal.*



css."
Marquette's Journal.

Akamsea, not far from the village of Guachoya, where, 131 years before, De Soto's rude sepulture had taken place. Here they encountered a tribe of naked savages, whose "only trade was wild cattle, who spoke a Mexican dialect, claimed descent from the Aztecs, and had never seen snow."

"Jolliet and I," writes Marquette, "held a council as to what we should do; whether push on in the face of certain capture by hostile tribes, with loss of valuable records, or rest satisfied with the discoveries already made." These "sufficient reasons induced them to return." They re-embarked at Akamsea July 7th, but the labor of stemming the boisterous currents of the Mississippi drove them to the more placid waters of the Illinois, when, without further misadventure, by way of Kaskaskia and the Chicago river they reached Winnebago the end of September; having paddled in all over 2767 miles through solitudes hitherto undisturbed by the "pale-face."

Marquette's constitution proved unequal to the exposures incident to the journey. Whilst Joliet was hurrying to Quebec with the written story of their adventures—which he lost in the rapids of the St. Lawrence—his priestly companion, worn out with disease, was compelled to spend the ensuing summer at St. Francis Xavier (Baie de Puant), but receiving instructions to re-visit the Illini, he embarked upon a second expedition October 25th, 1674. By the end of November biting frosts and blinding snow-storms invited a return of his malady, and when on December 4th the Chicago river became frozen, and his Indian allies deserted him, too ill to proceed, he "passed two leagues up the river, resolved to winter there," where he was nursed by some French traders and friendly Miamis. On the unlocking of the streams he made another gallant attempt, March 29th, to reach the village of Kaskaskia. In spite of his physical afflictions he landed there on Good Friday, April 8th, receiving a royal welcome from the 500 chiefs and 1500 young men assembled to greet him. To this multitude "he preached a crucified Christ took possession of the land in His name," and having accomplished the objects of his journey—the establishment of an Illini mission—and realizing that he was near his end, he departed hurriedly on the homeward journey for Mackinaw, escorted to Lake Michigan by a body-guard of loyal Kaskaskias.

THE DEATH OF MARQUETTE



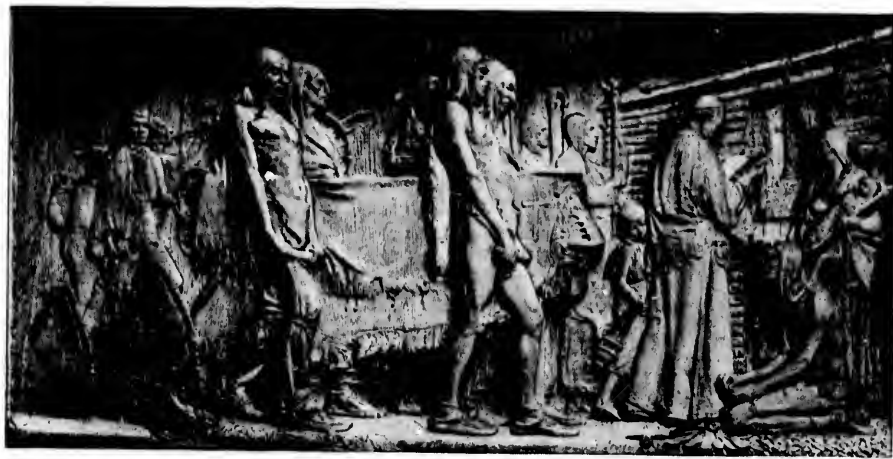
"To die as he had always asked * * * in a wretched cabin amid the forest, destitute of all human aid."
—Dablon's Narrative.

Arriving at St. Joseph, on the east shore of Michigan, he grew rapidly weaker, and while his simple companions were prostrated with grief, he calmly instructed them how to commit his body to the earth. Passing the mouth of a small stream—which for some time after bore his name—he pointed to a wooded eminence as the place for his burial. Here the canoemen landed, erected a bark cabin, and with savage tenderness made such provision for the dying missionary as the rude facilities permitted. "In the darkling wood," writes his biographer, "amid the cool and silence the priest knelt down, and offered to the Mightiest solemn thanks and supplication." Having confessed his followers, on the 18th of May, 1675, he pronounced in a firm voice his profession of faith, thanked the Almighty for permitting him to die as a Jesuit, a missionary and alone, and with glazed eyes raised heavenwards "passed without a struggle from the scene of his labors to that God who was to be his reward." "To die as he had always asked," says Father Claudius Dablon, "in a wretched cabin amid the forest, destitute of all human aid."

Thus expired Father James Marquette, missionary and explorer, of the Province of Champagne, at the age of 38 years, nine of which he had consecrated to the conversion of pagan Indians in forests "where the name of Jesus had never been announced," and with all the zeal of a man who had taken St. Francis Xavier as the pattern of his life.

Under the fleeting shadows of the voiceless pines Marquette's remains rested undisturbed for two years. Then, almost on the very anniversary of his death, some of his own flock, the Kiskakous, returning from a hunt, halted and made obeisance before the rude cross that marked his burying place, resolved "to disinter their father and bear his revered bones to the mission." The remains were placed in a box of birch-bark—a most humble casket—and the hunting squadron became a funeral cortege. As the weird procession with splashless paddles wound its silent way northwards it was joined by a party of Iroquois Indians and, nearing Mackinaw, by the two resident missionaries. Then the cold blue waters of Michigan and the sombre forests awoke to "the solemn intonation of the *De Profundis*," while the body was borne to the little Church of St. Ignace,

BURIAL OF MARQUETTE AT ST. IGNACE



"The *De Profundis* was intoned * * * the body was then carried to the church."
—*Dablon's Narrative.*

where "deposited in a small vault under the floor of the log chapel," writes the faithful Dablon, "it reposes as the guardian angel of the Ottawa mission."

Crude as this presentation of historic truths undoubtedly is, it may help to accent the fact that to France and the Society of Jesus America is indebted for "originating the purpose of discovering the Upper Mississippi," and for the establishment of Christianity in its fecund valley. However unworthily unpalatable this fact may be to a prejudiced few, it cannot be denied that it was the much-abused Jesuit who led in the exploration of our western solitudes. "Not a cape was turned, not a river entered but a Jesuit led the way, mingling business with suffering, and winning enduring glory."

Walter R. Nursey.



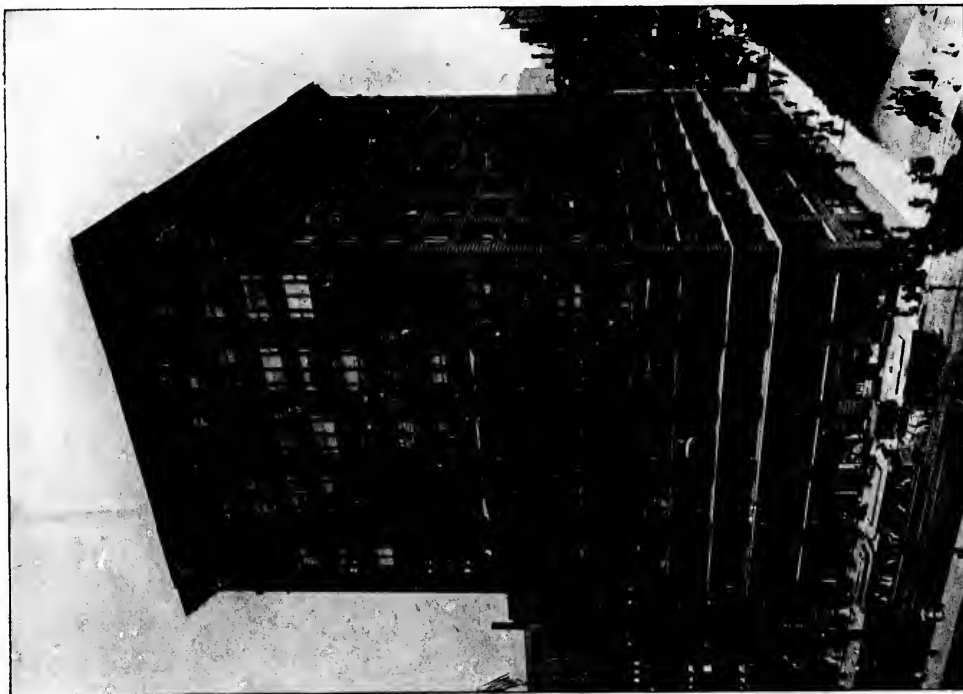
Narrative.



AN ILLINOIS CHIEF.



A FRENCH MAN-AT-ARMS.



THE MARQUETTE BUILDING

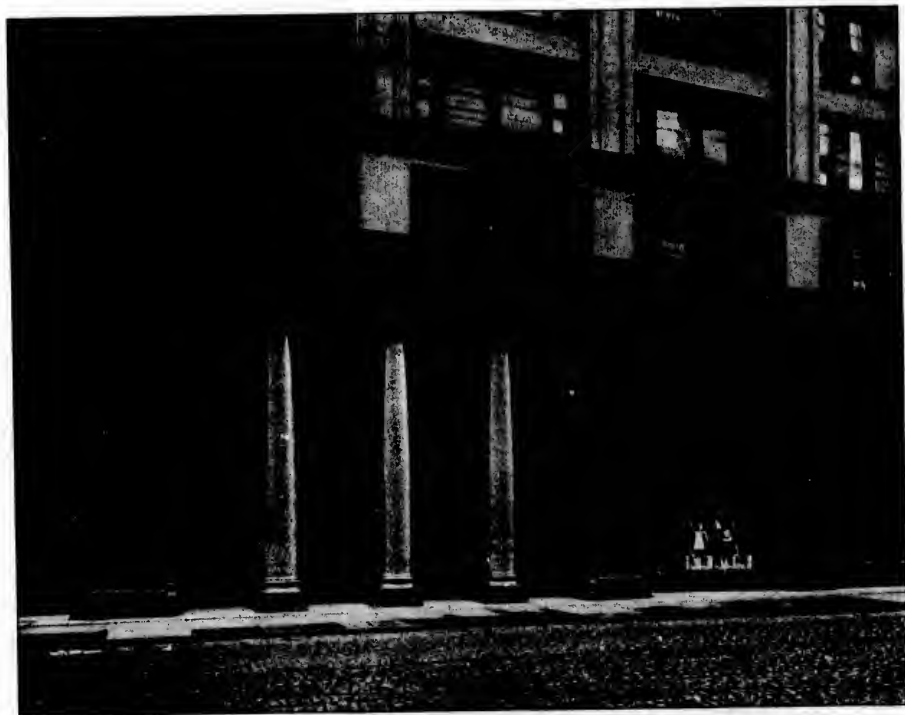


THE MARQUETTE BUILDING


.....The Legacy:

HERE MARQUETTE, if the statements of his biographers can be accepted, was not only an explorer but a man of prescience. In view of this fact it requires little tax of the imagination to cast a retrospect and picture the missionary while wintering in his rude cabin on the banks of the Chicago river casting—in his turn—a horoscope, and sermonizing, to the amazement of his Pottawatomic converts, upon the magical changes in local conditions that the future centuries would bring. It is safe to hazard that he prophesied the day when the frail birch-bark would make way for the monster *escotai chemahn*—“fire canoe”—bearing vast cargoes from old France, by way of the St. Lawrence and the great lakes, and without breaking bulk, down artificial inland waterways in the descent of the Father of Waters to the sea. It is not unreasonable to assume that he also saw, perhaps as “through a glass darkly,” the passing of the wigwams of the Miamis and the log shacks of the *coureurs-des-bois* on the river’s marshy banks, and of the Babelesque structures of stone and steel—beehives of the industry of a polyglot people, before which the marts of the older world might easily pale. Notwithstanding the quality of Marquette’s prophetic gift, it is doubtful if in his wildest flights of fancy he conceived of a structure such as that which bears his name—a legacy of his achievements—and which stands today a permanent “arrangement” in terra-cotta, opposite the site of the new postoffice, on the northwest corner of Adams and Dearborn streets—a pivotal business point in the heart of the hurly-burly of irrepressible Chicago.

“The MARQUETTE” is without doubt one of the best and most typical of the modern office buildings in this country. With its classical lines and seal brown exterior it is distinctly distinguishable from its many and less imposing neighbors in “Dearborn Street Cañon.” Its 16 stories tower skywards 210 feet above grade, and from its broad gravelled top, crowning its ten-foot attic, the inquisitive visitor can obtain a wonderful birds-eye view—governed by the way the wind blows—of



MARQUETTE BUILDING—DEARBORN STREET ENTRANCE

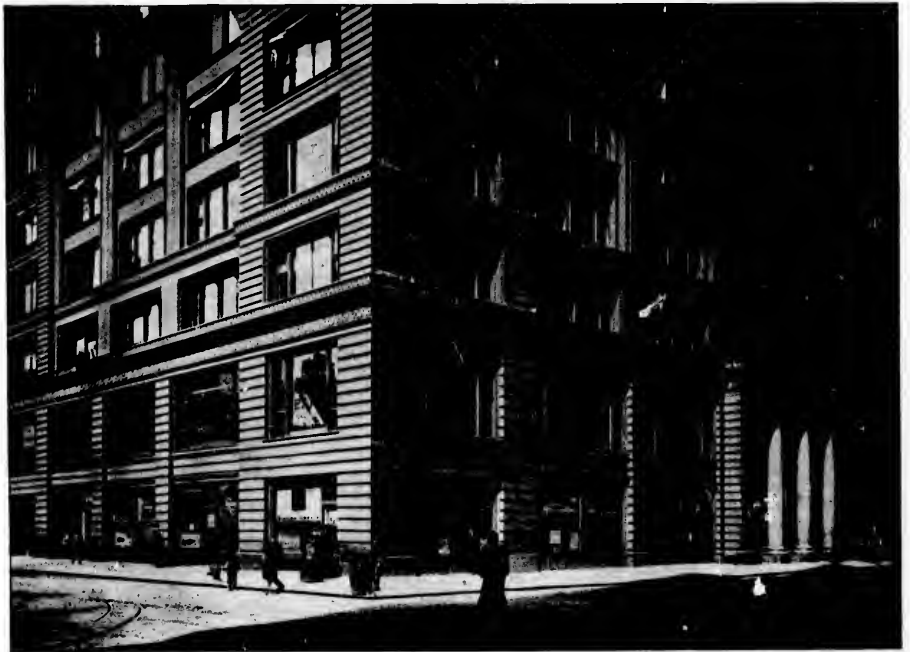


Chicago's leagues of roofs and thoroughfares, and of the prismatic vastness of lawless Lake Michigan. The Marquette has a frontage of 115 ft. on Adams street, 190 ft. on Dearborn street, and extends back 141 ft. along the 16-ft. alley at the north. The area of the lot is 24,190 sq. ft., all utilized by the building. Above the 1st story it is "U" shaped, with a short "L" projecting into the court. This interior court is 66 x 68 feet, and at the line of the second floor in its base is a large skylight. The walls of this court are faced with white enamelled brick, easily cleaned, and insuring additional light to all offices facing courtwards. For 88 feet along the alley side the building is set back 12 feet from the lot line.


The area of the building from 2d to 7th floors, inclusive, is 18,980 sq. ft.; of this 5,210 sq. ft. is devoted to the courts. The projecting "L" is not carried above the 7th floor, giving 18,331 sq. ft. as the remaining area of the building and 5,879 sq. ft. of court.

The construction throughout is fireproof, "skeleton" construction. The columns, girders and beams are of steel and are hot riveted. The foundations are steel beams imbedded in concrete. All columns, exterior and those built into the party wall are surrounded by porous terra-cotta, which in turn is covered with a heavy coat of cement plaster, thus insuring the highest degree of protection from fire—either from within or without. Mineral paint, which forms an armor coat when dry, prevents deterioration of the steel. The exterior is of seal brown pressed brick and terra-cotta. The first story—entrance excepted—the attic cornice and sill courses being all of the same rich material and highly ornamented. The supporting piers of the exterior are about 23 ft. apart, a most practicable unit for sub-division, giving about 11 ft. clear for each private office. The general style of the exterior is Italian Renaissance. The Dearborn street entrance, which is generously ample, extends upwards to the second floor line, the architrave being supported by three handsome Ionic columns of granite, with polished shafts and bases weighing about ten tons each.

The woodwork throughout the interior is of Tabasco mahogany which, with specially designed hardware in German silver, gives a marvellously rich effect. The partition glass is all



MARQUETTE BUILDING—NORTH-WEST CORNER



Florentine. The general toilet room is located on the 16th floor, adjoining the barber shop. The special toilet room for ladies is on the 7th floor. All of these, the corridors and the barber shop, have ceramic tile floors and marble wainscoting. The latter is handsomely fitted up with seven mahogany chairs and cases, French plate glass mirrors and a suspended ceiling of Venetian glass. The eleven hydraulic passenger elevators and one freight elevator are arranged in a semi-circle, the cabs are of mahogany and the statuary bronze grille work is of artistic design. The elevator enclosures above the 2nd floor are of Bower-Barffed iron; also the stairways, which have marble treads and ornamental risers and baluster with mahogany hand-rail.

In the attic are the janitor's quarters, storage space, and artists' studios, specially constructed with a view to light. In the basement are the elevator pumps, boilers and other machinery, besides a large refrigerator plant in which Grommes & Ullrich's immense stock of costly wines is kept at a given temperature. While the entire building is piped for gas, most of the offices are lighted by electricity (Edison service,) with wires in brass conduits. Generally, two private offices occupy the front of each suite, leaving a general office about 11 x 22 ft. on the corridor side. All general offices are supplied with telephone and coat closets, and hot and cold water.

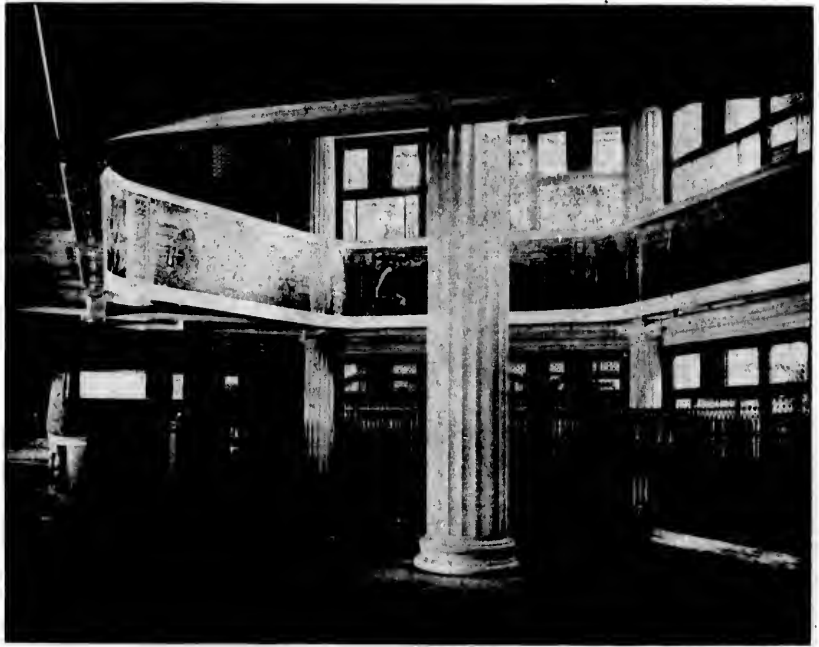
In designing the building, the architects tried to give prominence to the supporting line of columns on the exterior by recessing and subordinating the curtain walls between them and treating them as piers or buttresses, thereby adding force to the design by emphasizing the structural lines; additional strength was given to the entrance by projecting the piers on either side of the main entrance to the top of the second story, and between the three central supporting columns and by making all the material enclosed in that space of polished granite, including all columns, pilasters, jambs, soffits, lintels and architraves. Over the main entrance doors are plates of ornamented statuary bronze, the panther heads on the push-plates of the doors being designed and executed by Mr. Edward Kemeys, the animal sculptor whose work at the World's Fair received wide recognition. Over the doors of the main entrance are bronze reliefs, designed and executed



MARQUETTE BUILDING—NORTH END DEARBORN STREET

by Mr. Herman A. MacNeil, a faithful student of Indian characteristics, illustrating incidents in the life and of the death of Pere Marquette. The floors of the first and second stories are cream-colored fields of ceramic mosaic, with borders in design, of black and dark green tesserae. Over each elevator door on the first and second floors, are portraits modeled by Mr. Edward Kemeys in antique statuary bronze, of prominent officials of Noveau France, noted Indian sachems and of the early explorers of the great Northwest and the Mississippi valley.

The owners, wishing to reduce the commercial appearance of the entrance, while increasing its artistic effect, sacrificed a large space in the center of the building for the purpose of a memorial rotunda in honor of Marquette. After much outlay of time and money, how well they succeeded, with the help of artist, sculptor, architect and constructor, in producing a monument worthy of the explorer and all concerned is best demonstrated to those who have not beheld its architectural and artistic completeness by the illustrations that embellish these pages. On the right and left, as one enters from Dearborn street, broad lined white marble stairways lead to the 2d, or "banking floor," the marble of these, as of the panels covering the walls, of ceiling panels and of the beams of the 1st story are all of statuary Carrara marble. This rotunda is admittedly without a parallel in any business building in the United States. Polygonal in outline, entrance and vestibule occupy the eastern central portion, while the semi-circular battery of elevators fill the western, back of which are broad windows and a spacious court. On entering, ones attention is arrested by the massive fluted column of this same Carrara marble, which, glistening like porphyry, extends from the floor line to the 2nd story ceiling, through the well hole, where it supports the ceiling beams—of the same marble—which radiate from it to the angles of the polygon, forming panels, in which the Tiffany Glass & Decorating Co., of New York, have inserted some of their finest glass mosaic work from designs by Mr. J. A. Holzer. The panels are lighted by electricity, mellowed by ground glass globes which shed over the whole a soft, subdued light, revealing and enhancing the artistic jumble of the delicate tints. These panel decorations of glass mosaic and mother-of-pearl



MARQUETTE BUILDING—ROTUNDA

on the face of the balcony—4 feet 3 inches in width—between the 1st and 2nd floor, consist of three pictorial tablets descriptive of leading events in the career of Marquette, showing also the armour and weapons of the period, and heads of Marquette and Joliet.

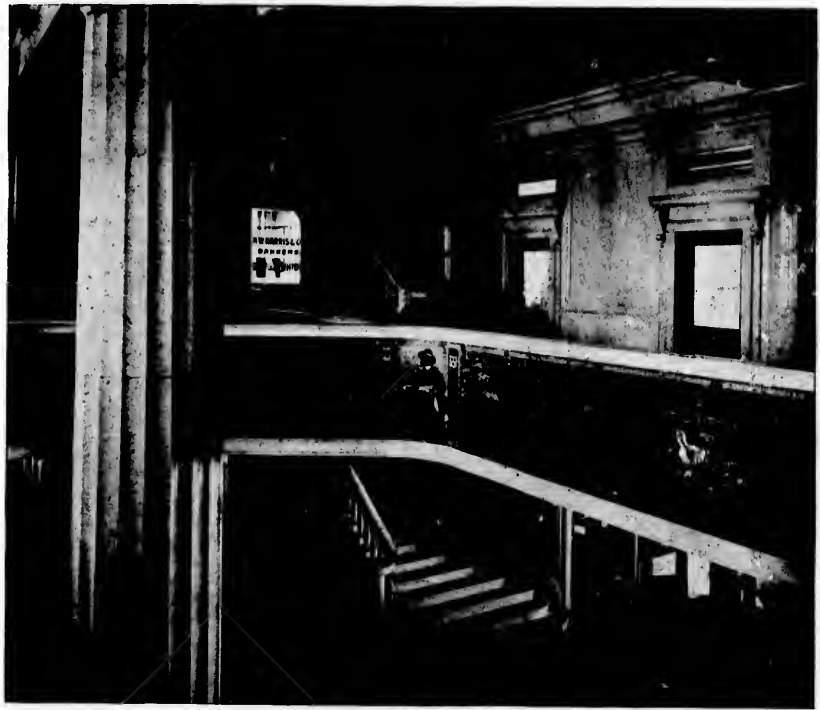
The impression produced upon the spectator on entering the rotunda and glancing upwards at the opalescent ceiling of the second story, at the satin gloss of the marble work, the deliciously delicate tints of the mosaic balcony pictures, the flashing tapestries of glass and the contrasting bronzes of Indian heads is a thrilling and a lasting one.

To Mr. Owen F. Aldis, one of the owners of the structure, who has made a translation of Marquette's journal, is due the credit for the original christening of the building. It was he also who suggested the inscriptions and the immortalizing in bronze of the now famous men connected with the discovery of the Mississippi.

The architects of the building are Messrs. Holabird & Roche, of continental reputation, and the constructors the Geo. A. Fuller Company, the widely known contractors, both of Chicago.

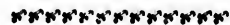


A COUREUR-DE-BOIS.



MARQUETTE BUILDING—GALLERY ON SECOND FLOOR

The "Marquette Building" Directory.



Accountants and Auditors:

	ROOM
BUTLER & NICHOLS	1048
MACBRIAR, ALEX	1628
PICKERING, H. J.	1540

Acetylene Gas:

ILLINOIS ACETYLENE CO.	729-32
WISCONSIN ACETYLENE CO.	729-32
WALMSLEY, FULLER & Co.	729-32

Advertising:

ADVERTISERS GUARANTER CO.	408-9
"ADVERTISING EXPERIENCE"	1526
CORNWALL BROS. & Co.	1105
KROGNES, C. GEO.	1634
NURSEY, WALTER R.	1749
PROCTOR & COLLIER CO.	1136
THOMAS, FRANK H.	1634

Agents of the Marquette Building:

ALDIS, ALDIS & NORTHCOTE	541-2
R. TYSON, Agent	
W. DICKENS, Superintendent	
G. W. LYONS, Janitor	

Architects:

	ROOM
BARNES, JULIAN	935
BLAIR, W. W.	1401-3
BLANCHARD, F. S.	1548
CHURCH & JOHNSON	1233-5
EISENDRATH, S. B.	1439-40
LLEWELLYN, J. C.	1245
POSTLE, D. E. & O. H.	1633
SILSBEE, J. L.	1532
SMITH & PACKARD	1548
WING, THOMAS W.	1212

Artists:

BROWN, CHARLES FRANCIS	1733-35
----------------------------------	---------

Art Publishers:

MARQUETTE PUBLISHING CO.	1749
MIROSKY, J. H. A.	1749

Asphalt:

HOUGHTON, SHAWHAN & HOUGHTON	1013
SHAWHAN, J. E., JR.	1013
STANDARD ASPHALT CO.	1013
STANDARD MALTIMA CO.	1013

René Robert Cavalier Sieur de La Salle, born in Rouen, France 1643. Educated for priesthood, crossed to Canada in 1668, and became a fur trader at Mackinac, Montreal. A self reliant man, devoting his energies to occupation, fortification and settlement. Aug. 7th, 1679 set sail from Fort Frontenac with Tonty and Father Hennepin and Membre on the "Griffin," the first vessel built to navigate the upper Lakes; reached Mackinaw 27th. Ambitious to complete the explorations instituted by Marquette, established Fort Crevecoeur, on the Illinois. Revisited France, and on his return with fresh recruits commenced the descent of the Mississippi, Jan. 1682, and discovered the open sea April 9th. Planted the cross, raised the arms of France and "took possession of the whole of



the Mississippi valley in the King's name." July 1684 he sailed with four vessels and an armed force from Rochelle, France, reaching the mouth of the Mississippi Feb. 18th, 1685. Here he built the palisaded fort of St. Louis in Texas. His vessels wrecked and his army decimated by disease in Cuba he started April 22nd, 1686, with twenty men and Messieurs Cavalier and Morangot, and the Recollect priest, Anastasius Dorvag, overland for Fort Crevecoeur. Compelled to return, through sickness, he again set out January 7th, 1687, but was foully assassinated on the Trinity river, Texas, by one of his own men—Dubant—March 19th, after consecrating twenty of the best years of his life in exploring the region tributary to the Mississippi.

La Salle

of valley in the King's
 y 1884 be sailed with
 and an armed force
 le, France, reaching
 the Mississippi Feb.
 Here he built the
 t of St. Louis in
 vessels wrecked and
 imated by disease in
 ed April 22nd, 1888,
 men and Messieurs
 Moranget, and the
 est, Anastasius Do
 for Fort Crevecoeur.
 return, through sick
 set out January 7th,
 a foully assassinated
 river, Texas, by one
 men—Dubant—March
 assassinating twenty of
 s of his life in ex-
 gion tributary to the

Bankers

- N. W. HARRIS & Co. 2d floor
 N. W. HARRIS
 A. G. FARR
 N. W. HALSEY
 E. E. BLACK
 A. W. HARRIS
 D. J. HARRIS
- THE BANKER'S NATIONAL BANK . . . 2d floor
 G. S. LACY, President
 D. B. DEWEY, Vice President
 GEORGE S. LORD, 2d Vice-President
 JOHN C. CRAFT, Cashier
 J. C. McNAUGHTON, Assistant Cashier
 FRANK P. JUDSON, Assistant Cashier

Barbers :

- DEITERICK, JAMES C. 1647

Bicycle Seat Post :

- BROOKS SPRING SEAT POST CO. 1540

Bicycle Supplies :

- THE A. L. MOORE CO. 533

Boiler Makers :

- STANDARD BOILER CO. 1141-2
 S. R. GREGG
 J. H. GREGG
 G. P. WHEELER

Brick and Tile Companies :

- AMERICAN TERRA COTTA & CERAMIC CO. 1013-6
 W. D. GATES
 H. B. PROSSER
 N. HERZOG
- CHICAGO TERRA COTTA CO. 1122
 ARTHUR M. EINSTEIN
 ARTHUR POLLAK
- CELEDON TERRA COTTA CO., LTD. 1000
 CHARLES T. HARRIS & Co. 1001-2
- HOPKINS, ANSON S. 1505-5
 JNO. L. WOODCOCK, Manager
- LA SALLE PRESSED BRICK CO. 1051
- TIFFANY ENAMELED BRICK CO. 1149-51

Brokers—Custom House :

- H. T. LOCKWOOD 1649

Butlers :

- MARQUETTE BUFFET 200 Dearborn st.
 JOHN C. GRAUS

Building and Loan Associations :

- CANADIAN & AMERICAN B. & L. ASSN. 834
- MERCHANTS & MECHANICS MUTUAL S. & L.
 ASSOCIATION 1440
- STEPHEN A. DOUGLAS B. & L. ASSN. 501
 P. WOODWARD, Secretary
 MAMIE E. RYAN, Bookkeeper

Building Specialties :

- E. H. HODGKINS & Co. 1034



Tonty

Sieur Henry de Tonty, the man with the "iron-band." An Italian officer, son of the Governor of Sacka—founder of the Tontine form of life insurance—chief lieutenant of La Salle and heroic defender of Fort Crevecoeur on the Illinois in 1680.

Carpet Company:

E. S. HIGGINS CARPET CO. 835-6
J. F. NORMAN, Representative
M. E. MCHALE, Representative

Carpenters:

S. E. BAGLEY & Co. 951

Cement:

DICKINSON CEMENT CO. 931
WM. DICKINSON, President
JOHN W. DICKINSON, Vice-President
THEO. G. DICKINSON, Treasurer
C. H. MCFARLAND, Secretary

Cigars:

GROMMES & ULLRICH . 200 to 204 Dearborn st.
JOHN ANDERSON, Manager

Civil Engineers:

CURTIS, W. W. 549
EWINGS, W. B. 1548

Consulting Electrical Engineers:

ARNOLD, B. J. 1541

Coal, Coke and Wood:

BRAZIL & CHICAGO COAL CO. 1624-5
CALUMET COAL CO. 1528
JAMES D. HURD, Agent
P. D. WHITEHEAD, Agent
CHICAGO & MICHIGAN WOOD CO. 449

DEVLIN COAL CO. 426-8
GREEN & REYNOLDS 1034
HANNA, M. A. & Co. 425
G. M. WOODWARD, Gen. Western Agt.

HALLE, A. J. 425
HEDSTROM, E. L. & Co. 615-19
INDIANA COAL CO. 1651
R. S. TENNANT, Agent

W. H. BOLES, Agent
JACKSON, W. W. & Co. 1223-4
LUCE, E. M. 1528

MARQUETTE THIRD VEIN COAL CO. 426-8
MARMET CO. 1220-1
MORIER, E. 425
NEW KENTUCKY COAL CO. 1527

P. D. WHITEHEAD, Agent
E. HOVER

PEASE, F. N. & Co. 449-51
ROANOKE MINING CO. 449-51
THOMAS, L. D. 1528
WEAVER COAL CO. 801-2

Commission:

O. C. CLEAVE 949-50

Consolidated Store Service Co.:

W. E. CLARKE, Manager 1325-6

Contractors and Builders:

BAGLEY, S. E. & Co. 951

er of the Contine form of
In 1880.

Whilst a halo of mystery has helped to canonize the North American Savage both quick and dead, his exploits have, for the most part, been sung with but scant regard for originality. In the great sea of extant Indian literature there are few legends so exquisitely saturated with the spirit of earth, sky, forest and stream, so aboriginal in their flavor, so instinct with redskin tradition, superstition and character, as the story of the conception of Little Panther, described on the vellum pages of a bronze bound unpublished manuscript by Remey, the sculptor. A surreptitious glance at these painted sheets of parchment, held in place by a moose skin thong, has disclosed the following facts. The wonderful quality of Mr. Remey's text must be left to the imagination: * * * Late in the sixteenth century lived White Thunder, a chief of the Seneca tribe of the great Iroquois nation. His placid disposition failed to satisfy the demands of a warlike people. White the clamor for a combative



leader waxed strong, White Thunder's wife pondered silently over the mystery of a new life that stirred within her. The son must not, nay! should not be like the father! * * * From a spell of deep introspection she fell into a profound dream. Its realism penetrated her very soul. * * * She was in a cave in the slumberous solitudes of the forest. Out of its sombre shadows blazed the malignant eyes of a panther. Its leonine silhouette arose before her indistinctly distinct. Ferocity and power were embodied in its hateful glance and cat-like form. * * * As she pleaded in her dream with the Great Spirit to endow her husband's son with all of the savage instincts of the beast before her, there stirred within her the responsive acquiescence of a quickened soul. * * * And so in course of time Little Panther's fame as chief of the Senecas, a brave of wondrous cunning and courage, filled the hearts of his people with admiration and amazement.

Little Panther

strong, White Thunder
 roared silently over the
 new life that stirred
 The son must not, nay!
 like the father! * * *
 t of deep introspection
 a profound dream.
 penetrated her very soul.
 was in a cave in the
 altitudes of the forest.
 where shadows blazed the
 eyes of a panther. Its
 quietude arose before her
 distinct. Ferocity and
 embodied in its hateful
 like form. * * * As
 in her dream with the
 to endow her husband's
 of the savage instincts
 before her, there stirred
 be responsive acquisi-
 chened soul. * * * And
 of time Little Panther's
 of the Senecas, a brave
 cunning and courage,
 arts of his people with
 and amazement.

Contractors and Builders Continued:

GEORGE A. FULLER Co.	1027-32
GEORGE A. FULLER, President H. S. BLACK, Vice-President B. M. FELLOWS, Sec'y and Treas. L. G. WELLS, Superintendent E. L. FULLER, " T. M. CAHILL, " L. P. SHRIVER, " P. P. BARRINGTON, "	
LEACH & SON	1401-3
LEAFGREEN BROS.	1003
MURDOCH, CAMPBELL & Co.	901-3
MORAVA, W.	1243
PRUSSING, GEO.	1401-3
SCHIFFLER BRIDGE Co.	1243
Designer and Contractor:	
WEARY, EDWIN D.	1449
Dry Colors:	
MORRIS HERRMANN & Co.	1102
H. W. CARTER, Representative	
Electrical Machinery and Specialties:	
AMERICAN CIRCULAR LOOM Co.	1114
EDWARD C. BROOKS, Manager	
ARC WELDING Co.	1521
ARNOLD ELECTRIC POWER STATION Co.	1540
BRINLEY, W. R.	1506-7
J. B. WALLACE, Manager	

CUTTER ELECTRICAL & MFG. Co.	1114
C. & C. Electric Co.	1143
EDDY ELECTRIC MFG. Co.	1506-7
J. B. WALLACE, Manager	
ELECTRIC STORAGE BATTERY Co.	1543
EARLE, J. D.	1014-5
ELECTRIC TIRE WELDING Co.	1521
ELECTRIC ARC PIPE WELDING Co.	1521
FAUNCE, ALBERT B.	1003-4
FORT WAYNE ELECTRIC CORPORATION	621-25
C. A. MUNSON, Chicago Manager	
GATES J. HOLT	1143
HOLTZER CABOT ELECTRIC Co.	1222
E. P. HARDING, Western Manager	
KEYSTONE ELECTRICAL Co.	1539
GEO. P. TOWNSEND, Manager	
McFELL ELECTRIC Co.	1549
S. F. B. MORSE & Co.	1015
STANLEY ELECTRIC MFG. Co.	1506-7
J. B. WALLACE, Manager	
WALKER Co.	1143
WELDED STEEL BARREL Co.	1521
C. V. KASSON, Agent	
JNO. L. HAMILTON	
Electrical Wire and Cables:	
BRINLEY, W. R.	1506-7
J. B. WALLACE, Manager	
MORSE, S. F. B. & Co.	1014-15
S. F. B. MORSE	
JOHN D. EARLE	



La Taupine

Pierre Moreau, nicknamed "La Taupine," a French coureur-du-*bois* on the "Divine river"—called by the Indians the *Obecagou*.
Worthy of remembrance for having befriended Marquette during his last illness.

Elevators:	
SOUTH HILL ELEVATOR CO.	1222
E. E. WRIGHT, Manager	
Engine Works:	
BUCKEYE ENGINE CO.	1249
ROBINSON & MORSE	
Forwarding Agents:	
LOCKWOOD, H. T. & CO.	1649
Hats:	
FRANK SCHOBLE & CO.	851
JAMES M. SULLENDER, Agent	
Hardware:	
RUSSELL & ERWIN MFG. CO.	941
Import Freight Agent:	
LOCKWOOD, H. T.	1649
Insurance—Accident:	
INTER-STATE CASUALTY CO. OF N. Y.	401-2
NORMAN KELLOGG, Agent	
NEW ENGLAND MUTUAL ACCIDENT ASS'N	938
W. B. CHANDLER, Agent	
Insurance—Bicycle:	
AM. WHEELMAN'S BICYCLE PROTECTIVE ASS'N, F. D. SNIFFEN, Manager	1522-23
Insurance—Freight:	
LOCKWOOD, H. T.	1649

Insurance—Life:	
MANHATTAN LIFE INSURANCE CO. OF N. Y.	416-21
W. N. SATTLEV, Manager	
J. T. HILL, General Agent	
MUTUAL BENEFIT LIFE INS. CO. OF N. Y.,	521-23
T. P. McAVOY, State Agent	
NATIONAL LIFE INSURANCE CO.	429-33
D. G. DRAKE, General Manager	
NEW YORK LIFE INSURANCE CO.	511-19
PROVIDENT LIFE & TRUST CO.	322-27
JAMES W. JANNEY, General Agent	
PRUDENTIAL INSURANCE CO.	422-24
GEORGE F. SCHILLING, West'n Mang'r	
SECURITY TRUST & LIFE INS. CO.	401-2
NORMAN KELLOGG, Agent	
SECURITY MUTUAL LIFE	502-3
J. N. YEOMANS, City Manager	
R. S. STROBHART, Western Manager	
Iron, Steel and Brass Companies:	
AMERICAN WIRE NAIL CO.	714-715
BETHLEHEM IRON CO.	1433
H. F. J. PORTER, Western Agent	
BEMENT, MILES & CO.	1533-5
BILLIN, C. E., Manager	
CARNEGIE STEEL WORKS	1016-22
LORETTO IRON CO.	1040
MICHIGAN BRASS & IRON WORKS	1137
J. PAINTER & SONS CO.	714-15



Talon

Intendant of Canada under Frontenac, 1672.

Iron, Steel and Brass Companies

PARKER, W. A.	1533-5
PITTSBURG BRIDGE Co.	1108-9
D. W. CHURCH, Resident Engineer	
RIVERSIDE IRON WORKS	714-15
CASEY & DAY, Agents	
SPALDING & JENNINGS	1533-5
STROM MANUFACTURING Co.	727
TAYLOR IRON & STEEL Co.	1533-5
WALLACE, BANFIELD & Co.	714-15
WHITING FOUNDRY EQUIPMENT Co.	1533-5

Land Companies:

CALIFORNIA FRUIT LANDS	1513
CALUMET HEIGHTS	1513
LAKE VIEW TOWN Co.	549
F. E. BROWN, Agent	
SMITH, J. JAY & Co.	831-2
J. S. FRENCH	
T. P. KEATON	
ALEX. PENNEY	

Lawyers and Law Firms:

ADCOCK, E.	907
BACON, H. M.	1025-6
BANNING, BANNING & SHERIDAN.	1303-12
BARRETT, H. G.	806-10
BITHER, W. A.	1608
BLISS, G. H.	918
BROWN, T. E.	806-10

BURTON & BURTON	1410
BURTON, C. S.	1410
CALAIS, F. W.	1529
CARTER, H. M.	910-15
CATLIN, D. C.	1608
CLARK, J. W.	919-21
CLARK, THOMAS C.	1207
CLARK, W. H.	919-21
COOK, W. J.	1623
CORNWELL, W. H.	1025-6
CURTIS, L. E.	907-9
DANIELS, C.	1628
DOOLITTLE, JAS. R.	1628
EVARTS, E. S.	907-9
GRIDLEY & HOPKINS	1508
GARNET, W. JR.	919-21
GURLEY, W. W.	910-15
HONORE, ADRIAN C.	1524
HARPER, H. M.	1628
HOLDEN, W. S.	1415
HUBBARD, O. P.	1529
HUDD, R. P.	1025-6
HOWELL, C. M.	1651
ISAACS, MARTIN J.	1128
JOB, F. W. B.	1608
JOB, F. W.	1608
JOYCE, W. B.	918
KING, HOYT	1205-7
LUHRS, J. FRED, JR.	933-4



Chicagou

A powerful chief of the Illinois, who visited France in 1725, when he was presented with a splendid snuff-box by the Duchesse of Orleans at Versailles.

Lawyers and Law Firms—Continued:

MCMURDY, ROBT.	1608
MCMURDY & JOB	1608
MILLER, H. H. C.	1415
MOORE & CREEKMUR	933-4
MUNDY, EVARTS & ADCOCK	907-9
MUNDY, JOHN W.	907-9
MUNDY, HARRISON M.	907-9
MUNROE, GEO. T.	1623
NORCROSS, FRED F.	712
O'BRIAN, QUIN	1128
ODELL, W. R.	1025-6
OGDEN, TAYLOR & HOLCOMB	751
OPPENHEIM, W. S.	1415
PALMER, S. C.	1628
PARKER & PAIN	1238-41
PARKER, F. W.	1410
PATENT TITLE CO	1313
PERLEY, E. E.	1404-5
POLLASKY, MARCUS	1627-32
POOLE & BROWN	806-10
POOLE, C. C.	806-10
REMY & MANN	1129-32
RILEY, M. L.	751
SANDERSON, JAS. G.	1608
SCHNEIDER, JOS.	1404-5
SHUMAN, P. L.	1501
SKINNER & RIGGS	1404-5
SCHUMACHER, B. W.	919-21

SCHOFIELD, H.	1025-6
SMILEY, M. J.	1207
STONE, H. G.	910-15
THOMAN, L. D.	1415
TOLMAN, E. B.	1628
WARING, F.	751
WILLARD & MOORE	1434-6
WOOD, IRA C.	910-15
VOSE, F. P.	1239

Loans and Mortgages:

BREWER, J. A. & Co.	939
DAVIS, H. T.	1123
GETCHELL, EDWIN F.	803
HOLTON, GEO. D.	820
MARQUETTE SECURITY CO.	1623
MATTHEWS, A. B.	403
MOONEY, W. H.	820
MUNROE, GEORGE J.	1623
NICHOLS, C. N.	1038
SEELYE, A. H.	820
SIDLEY, ALBERT	803
SPICER, J. R.	403
WATTS, G. C.	1123
YOUNG, W. R. & BRO.	413

Lumber Merchants:

BADGER & JACKSON	1551
BENEDICT, I. D. & Co.	1251



Tika

A Shawnee Indian hunter and protégé of La Salle's, whom he accompanied from Canada to France, from France to Mexico and the Mississippi. He was finally murdered by the assassins of La Salle on the Trinity river, March, 1687.

Lumber Merchants Continued:

KNUDSON & MERCER	1134-5
MENOMINEE RIVER LUMBER CO.	718-19
MERCER & BRANNAN	1134-8
SPALDING LUMBER CO.	718-19
JESSE SPALDING	

Lake Transportation:

LACKAWANNA TRANS. CO.	928
W. DICKINSON, Agent	

Machinery:

PHILADELPHIA ENGINEERING WORKS	1518-19
HILL, W. E. & Co.	1518-19
W. F. PARISH MACHINERY CO.	1518-19

Mill Works:

BARDWELL-ROBINSON CO.	1122
WISDOM & LEITZOW	1122

Mines and Mining:

BROWNLEE, A. G.	824-5
CLEOPATRA SILVER MINING CO.	721
FRANK DRAKE, President	
W. R. RAYMOND, Secretary	
CROSBY, ADAMS & Co.	1635
DRAKE, BROWN & Co.	721
FOUR OAK MINING CO.	1529
GOLD HILL MINING CO. OF MEXICO	812
HOUGHTON, ALICE	824-5

MOKELUMNE RIVER CONSOLIDATED GOLD	
MINING CO.	1008-9
PECK COMPANIES	1314-19
SHUMAN, P. L.	1501

Oil Companies:

HENRY OIL CO.	1006-7
HENRY, R. L.	1906-7
WESTERN RESERVE OIL CO.	803
U. S. LUBRICATING CO.	1246-7

Paper Mills:

THE PAPER MILLS CO.	1536-7
-----------------------------	--------

Pipe Works:

THE TYLER TUBE & PIPE CO.	1649
G. E. MOLLESON, R. R. Representative	
CHATTANOOGA FOUNDRY & PIPE WORKS	551
W. H. FLINN, Agent	

Photographers:

CLEVELAND, RALPH D.	1749
JENKINS, W. I.	1718
PANORAMA CAMERA CO.	1014-15
EARLE, J. D.	

Publishers:

BLOCH & NEWMAN	1441-2
GIBSON, J.	837
W. H. FURLONG	
J. B. LIPPINCOTT CO.	1423-5
A. L. FROST, Manager	



Chassagoac

A chief of the Illinois, and staunch friend of Conti and Father Membre at Fort Crevecoeur, on the Illinois river, near to where the City of Peoria now stands.

MARQUETTE PUBLISHING Co	1749	CHICAGO CENTRAL SUB RAILROAD Co.	1627
PROCTOR & COLLIER Co	1136	MARCUS POLLASKY, President	
J. LEE MAHER, Manager		GEO. A. ROYCE, Secretary	
PHILIPS PUB. CO. AND)		CHICAGO, MILWAUKEE & ST. PAUL R. R.	313
ORANGE JUDD Co }	1443-5	F A MILLER, Ass't Gen'l Pass. Agt	
GEORGE B BRIGGS, Western Manager		C I, RISING, Commercial Agt.	
WESTERN ELECTRICIAN PUB Co.	510	TICKET OFFICE,	95 Adams st.
Publications:		CHICAGO, ROCK ISLAND & PACIFIC	91 Adams st
"A POINTER"	1119	CHICAGO & ALTON R. R.	101 Adams st
REAU CAMPBELL, Manager		DELAWARE, LACKAWANNA & WEST'NR R	306-7
ARKANSAW TRAVELER	1441	T R FELL, Agent	
AMERICAN AGRICULTURIST	1443	DETROIT & TOLEDO SHORTLINE R. R.	1627
FARM AND HOME	1443	MARCUS POLLASKY, President	
NEW ENGLAND HOMESTEAD	1443	GEO. A. ROYCE, Secretary	
ORANGE JUDD FARMER	1443	ENGLEWOOD & CHICAGO ELECTRIC RV. Co.	813
THE WESTERN ELECTRICIAN	510	J C SCHAEFFER, President	
THE REFORM ADVOCATE	1441	GEORGIA R. R.	551
Plastering:		ILLINOIS CENTRAL R. R.	99 Adams st.
MCCARTNEY PLASTERING Co.	951	KANSAS CITY, PITTSBURG & GULF R. R.	416
WESTERN FIREPROOFING AND PLAST'G Co.	951	LAKE ERIE & DETROIT RIVER RV	320
Railroad Associations:		MICH., OHIO & SOUTHERN R. R.	1627
WESTERN R. R. ASSOCIATION	1330	MARCUS POLLASKY, President	
GEORGE S PEYSON		GEO. A. ROYCE, Secretary	
C R BABEUF		MISSOURI, KANSAS CITY & TEXAS RV	316-18
Railroad Companies:		JNO J ROGERS, Commercial Agent	
CHESAPEAKE, OHIO & SOUTHWESTERN	307	H. A. CHERRIER, North'n Pass Agt.	
CHICAGO NORTH DIVISION "L" R. R.	1627	MOBILE & OHIO R. R.	351
MARCUS POLLASKY, President		C. RUDOLPH, Passenger Agent	
GEO. A. ROYCE, Secretary		W. R. MILLER, Land Agent	



De Mentbet

A Frenchman; a *coureur-de-bois* and *voyageur*. Famous for his courage. De Mentbet on one notable occasion, jointly with De L'Aut, repulsed and killed five Seneca braves by whom they were suddenly attacked.

Railroad Companies—Continued:

NASHVILLE, CHATTANOOGA & ST. LOUIS	328
BRIARD F. HILL, Northern Pass. Agt.	
F. R. COOK, Traveling Freight Agt.	
F. A. MARSHALL, Sol. Freight Agt.	
NORFOLK & WESTERN R. R.	308-9
F. C. BRYAN, General Freight Agt.	
ST. LOUIS SOUTHWESTERN RY.	301 2
C. A. SHANK, Commercial Agt.	
SOUTH CAROLINA & GEORGIA R. R.	551
ST. LOUIS & SAN FRANCISCO R. R.	332
M. SCHULTER, General Agt.	
THE PLANT SYSTEM.	306-7
WABASH R. R.	310-11 and 97 Adams St.
F. A. PALMER, General Pass. Agt.	
GEO. H. ROBERTSON, City Agt.	
W. VIRGINIA, OHIO & WESTERN R. R.	1627
MARCUS POLLASKY, President	
GEO. A. ROYCE, Secretary	

Railroad Supplies and Material:

BLOCK POLLAK IRON CO.	922-24
GILLIS, A. D. & CO.	551
MUELLER, W. & CO.	1112-13
PECKHAM MOTOR TRUCK & WHEEL CO.	1626
J. A. HANNA, Manager	
W. H. GRAY, Sales Agent	
PETIBONE, MULLIKEN & CO.	725-5
TRUSS RAIL JOINT CO.	1421
H. H. McDUFFEE, Gen. Agt.	

Real Estate:

ADAMS, J. Q.	817-9
ALDIS, ALDIS & NORTHCOTE	541
R. TYSON, Agent	
BRAND, E. L.	651
BROWN, J. T.	1225-6
BUCKINGHAM, J.	1025-6
CHESBROWN, M. M.	940
COSGROVE, HENRY J. & Co.	1538-9
DAVIS, H. T.	1123
FARR, MARVIN A.	848-50
GETCHELL, EDWIN F.	803
GOULD, JOHN.	848-50
HONORE BROS.	1524-5
A. C. HONORE	
H. H. HONORE	
N. K. HONORE	
ISMOND, R. E. & Co.	1225-6
IONES, H. A.	1225-6
LONG, JOHN C.	848-50
MADDEN BROS.	524-5
MATTHEWS, A. B.	403
NICHOLS, C. N.	1038
PARISH & PARISH	1519
SIDLEY, ALBERT	803
SPICER, J. R.	403
STRATTON, C. C.	1513
STRATTON, H. G.	1513
STURGIS, ARTHUR E.	848-50



Black Hawk

Or Mahataimcobe-Kia-Kiab, a Sac Indian born 1767 on the Rock river. In 1805 joined the Britiab, claiming that in 1804 the Sacs and Foxes had been cheated by the U. S. Government in the cession of lands. His fight to redress his grievances cost the nation the lives of 200 citizens, 500 Indians, and \$2,000,000. Blackhawk was finally made prisoner of war; was released in 1833 and died in 1838.

Real Estate Continued:

WATTS, GEO. C. 1123
WELL, J. HENRY 1212
YOUNG, W. R. & BRO. 413

Soap Makers:

COSMO BUTTERMILK SOAP CO. 1618-20
J. J. BURNS, Manager

Societies:

AMERICAN BAPTISTS HOME MISSION SOC. 1648
REV. W. M. HAIGH, General Supt.
REV. J. B. THOMAS, Dist. Sec'y.
CHICAGO PHILATELIC SOCIETY 651

Spirit Merchants and Brewers:

HILLYER, ALKER & SONS 301
J. W. CHANNER, Agent
WALDENVILLE BREWING CO. 301

Stamps and Coins:

F. N. MASSOTH & CO. 651

Stock Cars:

MATHER STOCK CAR CO. 1320-22
ALONZO C. MATHER
JESSE M. WATKINS
W. Y. COE
C. H. KELLAR

Stenographers and Reporters:

HARRIET P. NOURSE, Notary Public . . . 1037
L. COUNTISS 938

CLARA E. HEAD 1547
M. L. & B. A. PRICE 805
LOUISE WIDNEY 1421

Stone:

AMBERG GRANITE CO. 1041
BEDFORD STERLING STONE CO. 601
L'ANSE BROWN STONE CO. 1039
W. A. AMBERG, President
J. WARD AMBERG, Treasurer
W. H. O'BRIEN, Secretary
VERD MARBLE CO. 1420
L. P. WOODHURY, Manager

Store Service Company:

LAMSON CONSOLIDATED STORE SERVICE
CO., W. E. CLARKE, Manager 1325-6

Surety Companies:

AMERICAN SURETY CO. 704-11
DANIEL T. HUNT, Manager
JOSEPH T. BOWEN, 2d Res. V.-P.
NATIONAL SURETY CO. 918
W. B. JOYCE

U. S. Lighthouse Inspectors Office:

COMMANDER, E. H. C. LEUTZE, U. S. N. . . 1431
S. F. PICKING
SUSAN HAYWARD
GEORGE T. BARTLETT
CALVIN W. HARRISON

that in 1804 the Waco
de nation the lives of
died in 1838.



De L'but

**Daniel Greysolon de L'but, cousin of Tonti; a leader of coureurs des bois, captain of the marines in Canada.
Explorer with Hennepin of the Upper Mississippi.**

Wines and Eiqueurs :

GROMMES & ULLRICH	200-204 Dearborn st.
JOHN B. GROMMES	
MICHAEL ULLRICH	
FRED DIEHL, Creditman	
FRANK REHM	
OTTO WERNER, Superintendent	
Du Vivier & Co	1013
Western Union Telegraph Co.	204 Dearborn st.

Woolens :

AORIGET & Co.	1139
W. E. BROTHERS, Representative	
W. J. SHELDON, "	
CORNELL, A. P.	1035
DORMEUIL FRERES	1145
C. C. MORTON, Agent	
FISHER, M. SONS & Co.	937
A. J. CARR, Representative	
H. W. HUNTER, "	
P. L. HUNTER, "	
KENDALL BARROWS & Co.	1251
NELSON FONTIN, Agt.	
LEONARD, W. B.	1035
NORTON FESSENDEN & Co.	1237
LEON E. BRETT, Agt.	
SIMPSON, J. F.	1035

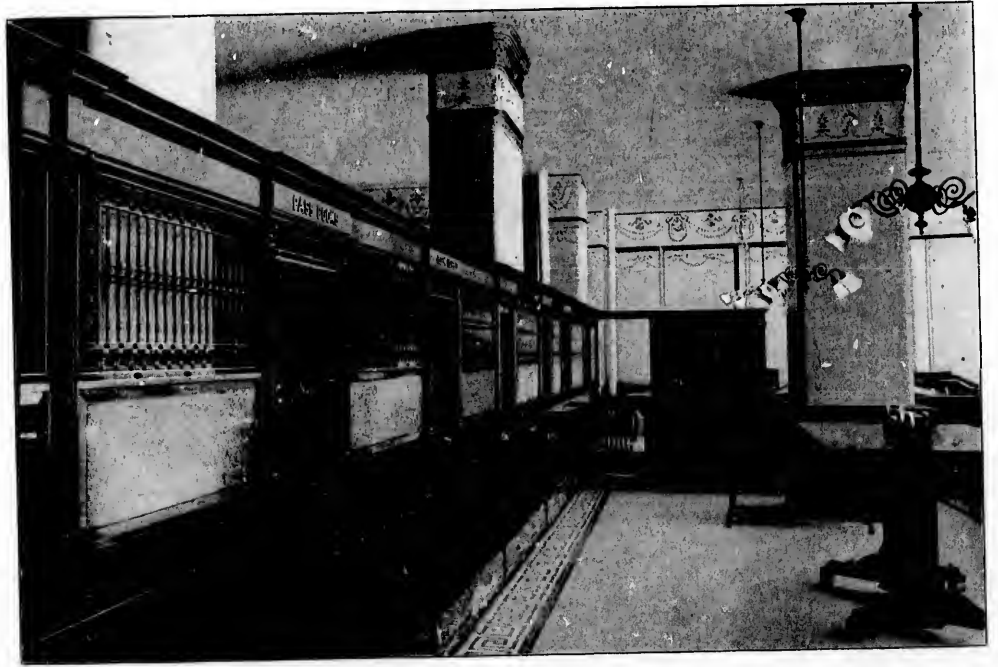
Writer of Business Literature :

WALTER R. NURSEY	1749
----------------------------	------

Miscellaneous :

ALLISON, W. D. & Co.	1101-2
AMERICAN DIAMOND Co.	1248

AMERICAN MASON SAFETY TREAD	1325
BALL, JAS. C.	725
BASSEY, E. H.	725
CLIFFORD CHEMICAL Co.	1437
EMMEL, C.	1448
FOSTER, W.	1204
FARREL, W. J.	1236
GETTY, H. H.	1208
GRAFTON, J. R.	1416
HARSON TREE TRANSPLANTER	529
HINDLEV, W.	725
IVES, B.	1446
INTERNATIONAL RATE GUIDE ASS'N	1610-13
KINGS COLLECTING AGENCY	1205-7
LEE, J. ELLWOOD & Co.	529
LORD, H. J.	725
MAC ARTHUR R. D., M. D.	411-12
MORSE, A. A.	946
OAKLAND MUSIC HALL Co.	821
RYERSON, MARTIN A.	1208
RUSH EVANS & Co.	1451
STANDARD MINERAL WOOL Co.	1549
SECURITY EQUIPMENT MFG. Co.	1145
JOSEPH RICE, Manager	
STEPHENS HENRY	1601
SUPERIOR GRAPHITE PAINT	1033
H. L. CHURCH, Agent	
TAXPAYERS DEFENSE LEAGUE	1628-32
HARVEY M. HARPER, Sec'y.	
U. S. METALIC PACKING Co.	1003
WESTON, C. H.	1433-8
WESTERN MINERAL WOOL Co.	1549
WERNER & BOYES, Manufacturers' Agts.	1033
WEST, J.	1201-2



OFFICE OF N. W. HARRIS & CO., BANKERS



N. W. HARRIS & COMPANY

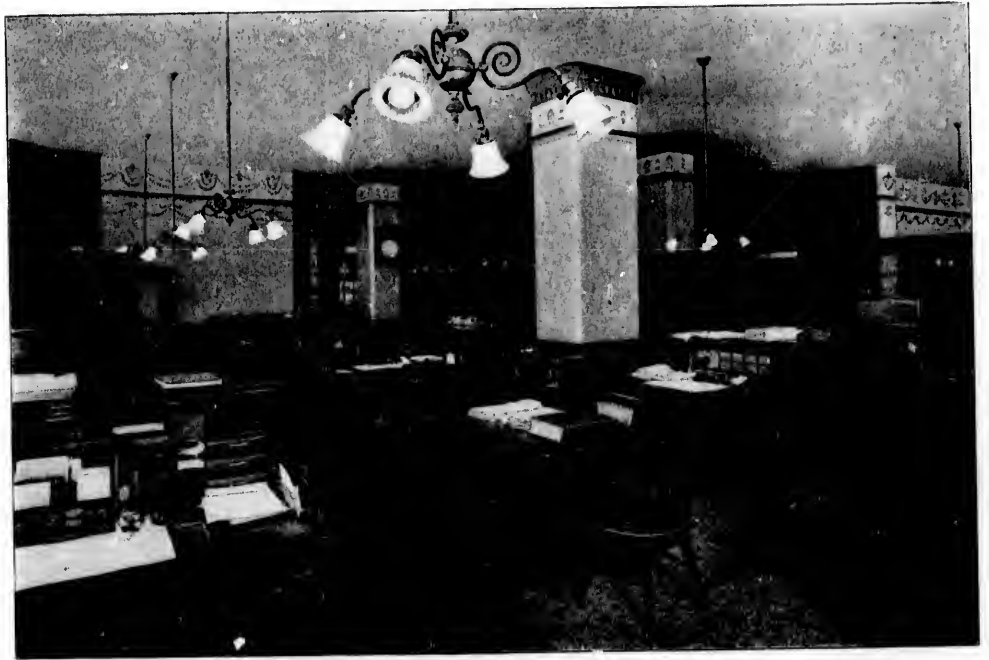
Bankers

MARQUETTE BUILDING.... CHICAGO
204 Dearborn Street

Deal in Government and Municipal Bonds.
Allow interest on funds awaiting investment.
Issue Travellers Letters of Credit, available
in all parts of the world.

NEW YORK
31 Nassau St

BOSTON
67 Milk Street



OFFICE INTERIOR OF N. W. HARRIS & CO., BANKERS

George A. Fuller Company.

General Contractors.

1027-1032 *Marquette Building,*

*Constructors of the
Marquette Building.*

Chicago.



Dairy Bear

A sachem of the Winnebago tribe, who—while not being a proselyte—was a staunch upholder of Marquette's missionary work.

W. A. GRANT, President
O. B. MARSH, Sec'y & Treas

Marsh & Grant Printing Co.

...**Printers**
and **Binders**

Phone
Harrison 411

Every Kind
and
Always the Best
of Modern
Printing

359 Dearborn
St....Chicago


This Book Executed by Us.



Brown Moose

A Mobawk warrior who met his death at the hands of Dr. L'But on the banks of the Upper Mississippi while the latter was exploring its headwaters in company with Father Hennepin.

OLD RELIABLE
INCORPORATED 1850

<p>Issues all improved forms of policies</p>		<p>W. N. Sattley, Mgr. 416 to 421 Marquette Bldg.</p>
---	---	--

CAPITAL, \$2,000,000

GENERAL OFFICE AND FACTORY
LOWELL, MASS.

**LAMSON CONSOLIDATED STORE
SERVICE COMPANY**

1325 MARQUETTE BUILDING

**PNEUMATIC TUBES
ALL KINDS OF
CASH AND PARCEL CARRIERS.**

W. E. CLARK,
MANAGER WESTERN AND SOUTHERN STATES



Roon Day

A Chippewa stoic, orator and brave. Prominent in the councils of the Wisconsin river Indians in the latter part of the Seventeenth century.



TICKET OFFICE, CHICAGO, MILWAUKEE & ST. PAUL RAILWAY, MARQUETTE BUILDING.



Keokuk

The "Watchful Fox," a great orator; chief of the Sacs and Foxes, a friendly Indian and successor to Blackhawk—whom he opposed in the war of 1832.

Artistic Booklets...

...Business Literature

...High Class Advertising...



WALTER R. NURSEY,

1749 Marquette Building

AUTHOR OF

REEWAYTIN, THE DEBATABLE LAND	WITH KYUSE AND TRAVOIS
THE MEROMINEE IRON RANGE	THE ROMANCE OF MERRY MAIDEN
MANITOBA AND THE NORTHWEST IN	THE MAGIC NORTHLAND
A NUTSHELL	IN CRISP ATTIRE
WHISPERS FROM A WINCHESTER	THE TURON COUNTRY
ERGANABA, THE IRON PORT OF THE WORLD	



"The Legend and Legacy of Pere Marquette" is a specimen of my work



GROMMES & ULLRICH'S MARQUETTE
PURE RYE.



GROMMES & ULLRICH 194 to 200 DEARBORN STREET CHICAGO

JOHN B. GROMMES
MICHAEL ULLRICH



THE immense wholesale WINE, LIQUOR AND CIGAR business of Grommes & Ullrich is carried on in the Marquette Building in the stores at the corner bounded on the north by the alley and fronting on Dearborn street. The general and private offices are to the right of the visitor on entering. In the center of the main reception and salesroom are elaborate show stands for the display of bottled goods; to the left is the cigar department, equipped with a large vault specially fitted up with all the latest improvements for keeping cigars in that exquisite condition appreciated and exacted by all true connoisseurs of "the weed." The design of the interior fittings, which are of rich red mahogany, is in harmony with the character of the building. The effect of the magnificent sample cases, with their myriad parti-colored glass flasks and bottles, containing some of the rarest and costliest liquids of the older world, and which flash and sparkle in the changing rays of light, is fairly entrancing and spectacular—a picture from the pages of Monte Christo. The rear of the store is occupied by the shipping and receiving departments. Here are the elevators that connect with the cellar, which is also reached by an iron and marble stairway leading from the end of the main showcase in the salesroom.

The entire basement of the Marquette, aggregating 20,000 square feet, is used for storage, wine cellars and bottling departments, and is in itself a wonderful ensemble of the finest distillations of all countries which produce the luscious grape. Wines of every grade, from *vin ordinaire*—ordinary table wine—to the highest grade of chateaux—bottling. Wines from the Rhine and the Moselle, from the Gironde and famous Bourgogne, from the sun-kissed hills of Italy, the vineyards of Spain and the slopes of Portugal! Liquors, too, of all kinds from the British Isles, from France and Germany, Norway, Sweden and far-off Russia. In plentiful addition to these the visitor finds, last but not least, the genuine and palatable domestic Rye and Bourbon whiskies of the Maryland, Monongahela and Blue Grass regions, of endless variety and age. In fact, from the cellars or storage rooms of this vast establishment the man of simple habits as well as the *bon vivant* can readily make a selection that will gratify his especial taste. For Clubs, Hotels, Barrooms and regular family trade the stock to select from is unequalled.

Messrs. Grommes & Ullrich would draw the especial attention of consumers to the fact that their wine cellars are kept at an even temperature the year round. This is accomplished by ice machines fed with carbonic acid gas in place of the objectionable ammonia process ordinarily employed.



Waubansie

Waubansie, or the "Looking Glass," a noted war chief of the Pottawattomies. He befriended the whites during the Chicago massacre, and fought as an ally with the Illinois militia in the Blackhawk war of 1832.

HARRIET P. NOURSE

Stenographer
and Typewriter



1037 Marquette
Building

Telephone
Main 3660

Notary
Public

Copying
Circulars
Legal Work
Specifications
Correspondence

COCES } A. S. C. A
} BEOFORD McNEILL.

CABLE } "DRAKEBROWN"
ADDRESS } CHICAGO } LONDON

Drake, Browne & Co.

Brokers and Investors

In Mines and Mining Machinery, Mineral, Fruit, Oil and
Ranche Lands in the United States, Mexico and British Colum-
bia. Exceptional facilities in the English market. Dividend
Paying GOLD MINES a Specialty. Correspondence solicited.

LONDON OFFICE
No. 1 ST. SWITHIN'S LANE, E. C.

CHICAGO OFFICE
721 MARQUETTE BUILDING.
104 DEARBORN ST.

H. F. BUTLER

Wm. C. NICHOLS

BUTLER & NICHOLS

PUBLIC ACCOUNTANTS AND AUDITORS

1048 MARQUETTE BUILDING

TELEPHONE MAIN 3484

CHICAGO

REFERENCES

E. O. KEITH, PRES'T METROPOLITAN NATIONAL BANK
G. B. SHAW, PRES'T AMERICAN TRUST AND SAVINGS BANK
JOHN J. MITCHELL, PRES'T ILLINOIS TRUST AND SAVINGS BANK
JOHN N. WALSH, PRES'T CHICAGO NATIONAL BANK

Myron H. Church

C. Frank Jobson

Church & Jobson

ARCHITECTS

1233-35 Marquette Building
Telephone 1747 Main

Chicago



Shaubena

An Ottawa Indian and warrior, born on the Kankakee in 1776. Became chief of the Pottawattomies. Fought under Tecumseh the Shawnee at the battle of the Thames, 1812. Saved the lives of many whites; received a government annuity, and is recognized as being the last of the Chicago Indian chiefs. He died in 1839.

Law Offices of

Marcus Pollasky.

Practices in all the State and Federal Courts.

Corporation Law a Specialty.

President :

*Chicago Central Sub-Railroad Co.
Chicago North Division "L" R. R. Co.
Detroit & Toledo Short Line R. R. Co.
Michigan, Ohio & Southern R. R. Co.
West Virginia, Ohio & Western R. R. Co.*

1627-32 Marquette Building.


Chicago.



War Eagle

A Pottawattomic chief with a record as a fighting man and Indian agitator during the Blackhawk wars.

The O. H. Bicycle Saddle

 No Wrench Required
in Adjusting...
Patent Adjustment Instead

NO CHAFING OR INFLAMMATIONALWAYS COOL



Retail Price, \$4.50

A. P. O'HARA, Manufacturer

Room 17,

206 La Salle Street, Chicago.

BROOK'S SPRINGSEAT POSTS

On account of the present demand
for lower prices have been

Reduced FROM
\$3 to \$2

Thousands of cyclists attest its
merits. You will never know what
solid comfort is until you have
your wheel fitted with a Brook's
Post. Sent by express to any ad-
dress on receipt of price or by
mail for 20 cents additional. Do
not send local checks unless ex-
change is added. For sale by all
dealers, or by

Brook's Spring Seat Post Co.
1840 Marquette Bldg., Chicago



\$2.00

Phone Ex. 467

Cable Address "Lockwood"

H. T. LOCKWOOD & CO.

Custom House Brokers and Forwarders

Import Freight Agents for the
United States

Canadian Pacific Railway Canadian Pacific Despatch

1649-50 Marquette Building
CHICAGO



FROM THE ROOF OF THE MARQUETTE BUILDING, LOOKING NORTH UP DEARBORN STREET.



Buttermilk Toilet Soap

Has the Largest Sale
of any Toilet Soap
in the World.

COSMO BUTTERMILK SOAP CO.
Marquette Building
Chicago



Big Snake

One of the last of the more recent of the Winnebago warriors of the "thirty years war." His vacillating propensities, however, made his profession of friendship as much to be dreaded as his declaration of hostility.

GEORGE F. SCHILLING

General
Agent

THE

PRUDENTIAL INSURANCE Co.

OF AMERICA

GUARANTEED 5% INVESTMENTS
GUARANTEED
LIFE
INCOME POLICIES

422 to 424
Marquette Building

Telephone
Main 3774

S. E. BAGLEY & Co.

S. E. BAGLEY
H. A. PETERS

Carpenters
and General Contractors

TELEPHONE
MAIN
4023

951 Marquette Building
CHICAGO . . .

J. P. Keary

Official Sign Writer and Designer for
the Marquette Building

The Largest House
of its kind
in America...

Office and Window Work
a Specialty

109 Van Buren
Street

Telephone Main 1077

Chicago

This statue, which is the work of Trentanove, of Florence, Italy, and which differs from the preconceived notion formed by many of Marquette's appearance, was placed by the state of Wisconsin in Statuary Hall in the capitol at Washington. The question was seriously raised by a bigoted individual as to the propriety of admitting the statue of a "churchman"—though a great explorer—to a hall said to be reserved for monuments of "statesmen" only. As no steps however have been taken for its removal it is to be hoped it will be



Father James Marquette

permitted to remain unmolested. A bronze replica of this same statue, erected by the citizens of Marquette, Michigan, on the spot near to the point where the missionary is said to have first camped, was unveiled July 13th, 1897. A pageant consisting of fifty costumed Chippewas in bark canoes, gave a realistic representation of the daring explorers landing over 225 years before, and the venerable missionary Bishop Marac, 86 years of age, addressed the Indians in their own tongue.

unmolested.
this same
citizens
on the spot.
ere the mis-
first camped,
b, 1897. A
fifty costumed
canoes, gave
tation of the
ing over 225
the venerable
arac, 86 years
e Indians in

ALASKA

"THE YUKON COUNTRY"

An Official Guide

TO THE

GOLD FIELDS OF ALASKA AND NORTHWEST CANADA.

This book, just from the press, contains a History of the United States and British possessions in the far Northwest, together with selected Facts from the latest United States Government Reports and Official Information furnished by the Canadian Government.

It also contains Three Maps showing the Pacific Ocean and the Yukon Route and the Six several Overland Routes via Fort Wrangel and Juneau to the Thron-dinck.

The text is by Mr. Walter R. Nursey, who has explored the far Northwest from Hudson's Bay to the Pacific.

MacDONALD & NURSEY, Publishers,

298 DEARBORN STREET,
CHICAGO.

Copies can also be obtained on application or by mail at Room 1749 Marquette Building.

RALPH D. CLEVELAND,

EXPERT IN

Photography

1749 MARQUETTE BUILDING



**Artistic Architectural and
Landscape Work
A Specialty**

**ALL THE HALF-TONES IN THIS
BOOKLET ARE FROM MY NEGATIVES
AND PRINTS**

**Work Guaranteed
High Class Work Only**



199

524
MARQUETTE BUFFET



