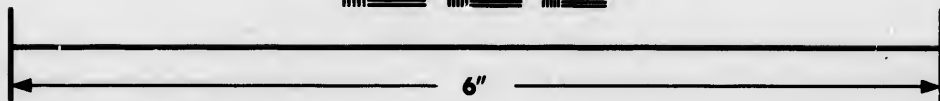
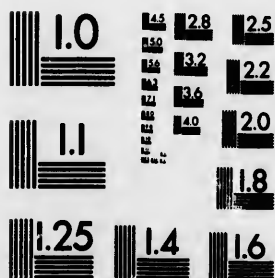


**IMAGE EVALUATION  
TEST TARGET (MT-3)**



**Photographic  
Sciences  
Corporation**

23 WEST MAIN STREET  
WEBSTER, N.Y. 14580  
(716) 872-4503

**CIHM/ICMH  
Microfiche  
Series.**

**CIHM/ICMH  
Collection de  
microfiches.**



**Canadian Institute for Historical Microreproductions / Institut canadien de microreproductions historiques**

**© 1985**

Technical and Bibliographic Notes/Notes techniques et bibliographiques

The Institute has attempted to obtain the best original copy available for filming. Features of this copy which may be bibliographically unique, which may alter any of the images in the reproduction, or which may significantly change the usual method of filming, are checked below.

L'Institut a microfilmé le meilleur exemplaire qu'il lui a été possible de se procurer. Les détails de cet exemplaire qui sont peut-être uniques du point de vue bibliographique, qui peuvent modifier une image reproduite, ou qui peuvent exiger une modification dans la méthode normale de filmage sont indiqués ci-dessous.

- Coloured covers/  
Couverture de couleur
- Covers damaged/  
Couverture endommagée
- Covers restored and/or laminated/  
Couverture restaurée et/ou pelliculée
- Cover title missing/  
Le titre de couverture manque
- Coloured maps/  
Cartes géographiques en couleur
- Coloured ink (i.e. other than blue or black)/  
Encre de couleur (i.e. autre que bleue ou noire)
- Coloured plates and/or illustrations/  
Planches et/ou illustrations en couleur
- Bound with other material/  
Relié avec d'autres documents
- Tight binding may cause shadows or distortion  
along interior margin/  
La reliure serrée peut causer de l'ombre ou de la  
distortion le long de la marge intérieure
- Blank leaves added during restoration may  
appear within the text. Whenever possible, these  
have been omitted from filming/  
Il se peut que certaines pages blanches ajoutées  
lors d'une restauration apparaissent dans le texte,  
mais, lorsque cela était possible, ces pages n'ont  
pas été filmées.
- Additional comments:/  
Commentaires supplémentaires:

- Coloured pages/  
Pages de couleur
- Pages damaged/  
Pages endommagées
- Pages restored and/or laminated/  
Pages restaurées et/ou pelliculées
- Pages discoloured, stained or foxed/  
Pages décolorées, tachetées ou piquées
- Pages detached/  
Pages détachées
- Showthrough/  
Transparence
- Quality of print varies/  
Qualité inégale de l'impression
- Includes supplementary material/  
Comprend du matériel supplémentaire
- Only edition available/  
Seule édition disponible
- Pages wholly or partially obscured by errata  
slips, tissues, etc., have been refilmed to  
ensure the best possible image/  
Les pages totalement ou partiellement  
obscurcies par un feuillet d'errata, une pelure,  
etc., ont été filmées à nouveau de façon à  
obtenir la meilleure image possible.

Pulled from the Nova Scotian Institute of Science:  
Proceedings and Transactions. Vol 6, Part 2, 1886

This item is filmed at the reduction ratio checked below/  
Ce document est filmé au taux de réduction indiqué ci-dessous.

10X	14X	18X	22X	26X	30X
<input type="checkbox"/>	<input type="checkbox"/>	<input type="checkbox"/>	<input checked="" type="checkbox"/>	<input type="checkbox"/>	<input type="checkbox"/>
12X	16X	20X	24X	28X	32X

The cop  
to the g

The ima  
possible  
of the o  
filming

Original  
beginni  
the last  
sion, or  
other or  
first pag  
sion, an  
or illustr

The last  
shall co  
TINUED  
whichev

Maps, p  
differen  
entirely  
beginni  
right an  
required  
method

The copy filmed here has been reproduced thanks to the generosity of:

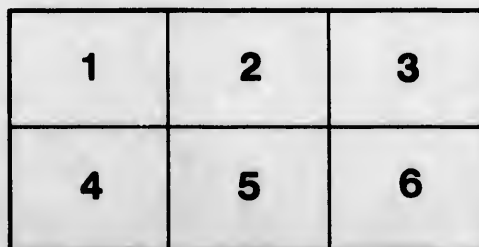
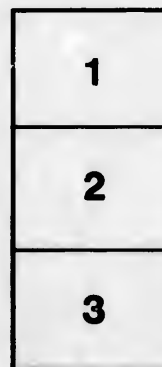
University of Toronto Library

The images appearing here are the best quality possible considering the condition and legibility of the original copy and in keeping with the filming contract specifications.

Original copies in printed paper covers are filmed beginning with the front cover and ending on the last page with a printed or illustrated impression, or the back cover when appropriate. All other original copies are filmed beginning on the first page with a printed or illustrated impression, and ending on the last page with a printed or illustrated impression.

The last recorded frame on each microfiche shall contain the symbol  $\rightarrow$  (meaning "CONTINUED"), or the symbol  $\nabla$  (meaning "END"), whichever applies.

Maps, plates, charts, etc., may be filmed at different reduction ratios. Those too large to be entirely included in one exposure are filmed beginning in the upper left hand corner, left to right and top to bottom, as many frames as required. The following diagrams illustrate the method:



L'exemplaire filmé fut reproduit grâce à la générosité de:

University of Toronto Library

Les images suivantes ont été reproduites avec le plus grand soin, compte tenu de la condition et de la netteté de l'exemplaire filmé, et en conformité avec les conditions du contrat de filmage.

Les exemplaires originaux dont la couverture en papier est imprimée sont filmés en commençant par le premier plat et en terminant soit par la dernière page qui comporte une empreinte d'impression ou d'illustration, soit par le second plat, selon le cas. Tous les autres exemplaires originaux sont filmés en commençant par la première page qui comporte une empreinte d'impression ou d'illustration et en terminant par la dernière page qui comporte une telle empreinte.

Un des symboles suivants apparaîtra sur la dernière image de chaque microfiche, selon le cas: le symbole  $\rightarrow$  signifie "A SUIVRE", le symbole  $\nabla$  signifie "FIN".

Les cartes, planches, tableaux, etc., peuvent être filmés à des taux de réduction différents. Lorsque le document est trop grand pour être reproduit en un seul cliché, il est filmé à partir de l'angle supérieur gauche, de gauche à droite, et de haut en bas, en prenant le nombre d'images nécessaire. Les diagrammes suivants illustrent la méthode.

ire  
détails  
es du  
modifier  
er une  
filmage

ées

re

y errata  
d to

nt  
ne pelure,  
çon à



32X

at the eastern apex of a subordinate basin formed by transverse folding.

Should further research show that at this point the seams referred to maintain their size, and extend in a form permitting of economic exploitation, the discoveries are of great importance. The search for similar seams may then reasonably be made at other points along the coal band, and certainly the areas of the Minas Basin coal field is large enough to allow a hope that in the future it may be added to the list of our productive districts.

---

ART. II.—NOTES ON THE MANGANESE ORES OF LOCH LOMOND,  
C. B. BY EDWIN GILPIN, A. M., F. G. S., F. R. S. C.,  
*Inspector of Mines.*

(Read 14th Jan., 1884.)

FOR a number of years the presence of these ores in Cape Breton was recorded only by the mineralogist. Recently, however, deposits of economic value have been found and worked. The ores of manganese occur, in Nova Scotia proper, in strata of Lower Carboniferous age, occupying a horizon low down in the Marine Limestone formation. The late Dr. How, in a paper read before this Institute some years ago, gave an interesting account of these minerals as they occur and are worked in Hants County. This evening I purpose merely to draw the attention of the Institute to their occurrence in Cape Breton, an interesting fact, as the knowledge of their presence in workable amounts in the Loch Lomond district will lead to a search for them in other parts of the Island. In all probability, the wide extent of the Cape Breton Limestones will before long afford several localities containing deposits worthy of the miner's attention. My notes are from a visit to the mine, and from information kindly furnished me by Mr. Fletcher, of the Geological Survey of Canada, who made a detailed survey of this district summer before last. The geological features of this part of Cape Breton are represented by a band of millstone grit extending from Mira River,

up the Salmon River, to Loch Lomond; and bounded on the north by the felsites of East Bay, and on the south by the felsites of the Mira Hills. At several points the Lower Carboniferous marine limestone formation crops out beneath the millstone grit, and occurs as isolated patches resting directly on the felsites, and there are patches of the basal carboniferous conglomerates brought up by faults through the millstone grit.

The locality in which these deposits have been discovered is on the Salmon River Road, about two miles east of Loch Lomond, near the line dividing Cape Breton and Richmond Counties.

The felsites formed a shore along which we now find limestones, conglomerates, shales and grits exposed as they were accumulated under the varying conditions of current, depth of water, and of the prevailing winds of the period under consideration. At some points the limestones rest on the felsites, at other points conglomerates and shales intervene. The discoveries of manganese ores, more particularly the subject of my paper, were made in one of these bays, where the felsites are succeeded by shales, grits, conglomerates, and finally by limestones, the latter extending apparently from point to point of the ancient Bay.

The manganese ores are found at the Western, or McCuish Mine, in irregular bedded layers in a soft arenaceous shale, which is in places calcareous, and coated with manganese oxide. The layers vary in thickness up to 18 inches, and are sometimes connected by vertical stringers of ore. The shales when weathered present nodules of ore, and large quantities are present as films on the cleavage planes of the shale.

At the Eastern, or Morrison mine, the ore at the time of my visit was mined from a bed underlying a thin layer of black manganiferous limestone, with red and greenish shales and sandstones and conglomerate. The thickness of the ore and of the limestone varied from 2 to 8 inches. The average thickness of the two layers being 8 inches.

The ore was found at several other points in the vicinity as lenticular masses and irregular nests in conglomerate, etc., and

sometimes  
of occurrence  
in the low  
island near  
Lomond p  
under con

The lime  
ous and f  
which som  
to be silve

The ore  
pyrolusite,  
generally a  
structure.  
apparently  
of lenticula  
The miner  
limonite.

The follo  
Geological

Sample N

B

Sample N

B

F

Ores repres  
uses to whi  
making.

As the e  
the quality  
permanent  
the close of

These or  
deserves cr  
in Cape B

sometimes forming the cementing material. This latter mode of occurrence is similar to that shown by the red hematites found in the lower carboniferous conglomerates at several parts of the island near their junction with older strata. And near the Loch Lomond post office a highly manganiferous red hematite occurs under conditions apparently of a similar nature.

The limestone overlying these measures is highly manganiferous and ferriferous, and contains numerous crystals of galena, which some time ago incited prospecting, as they were thought to be silver ore.

The ore from the Western, or McCuish mine, is a fine-grained pyrolusite, sometimes holding a little brown, or hard ore. It is generally amorphous, but the better grades show a subcrystalline structure. The McCuish ore is a soft black amorphous ore, apparently of high order. At several points considerable masses of lenticular hard ore are met, with calcspar and heavy spar. The minerals associated with the ore are calcite, baryte and limonite.

The following analyses by Mr. G. C. Hoffman, Analyst to the Geological Survey, will show the character of the ores:—

Sample No. 1.—Pyrolusite with a little manganite, gave—

Binoxide.....81·52 per cent.

Sample No. 2, consisting almost exclusively of pyrolusite, gave

Binoxide.....88·98 per cent.

Ferric oxide ..... 21 “ “

Ores represented by the above analyses would be adapted for all uses to which the mineral is usually put, and especially to glass making.

As the extent of manganiferous ground is considerable, and the quality good, it is to be hoped that these ores will form a permanent addition to the list of Cape Breton exports. Up to the close of the year 1883 about 200 tons have been shipped.

These ores have been worked by Mr. E. T. Moseley, who deserves credit for having inaugurated a new mining industry in Cape Breton County.

