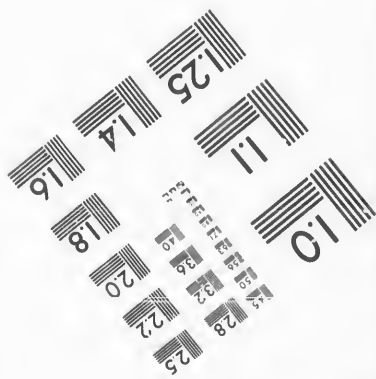
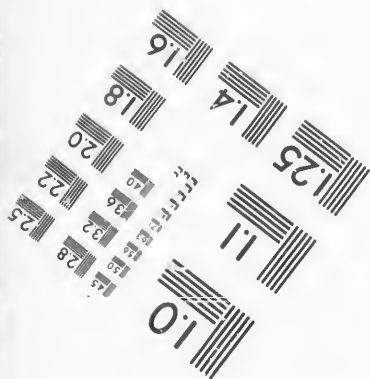
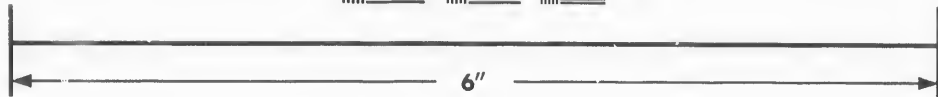
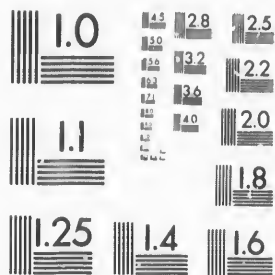


**IMAGE EVALUATION  
TEST TARGET (MT-3)**



**Photographic  
Sciences  
Corporation**

23 WEST MAIN STREET  
WEBSTER, N.Y. 14580  
(716) 872-4503

**CIHM/ICMH  
Microfiche  
Series.**

**CIHM/ICMH  
Collection de  
microfiches.**



Canadian Institute for Historical Microreproductions / Institut canadien de microreproductions historiques

**© 1987**

Technical and Bibliographic Notes/Notes techniques et bibliographiques

The Institute has attempted to obtain the best original copy available for filming. Features of this copy which may be bibliographically unique, which may alter any of the images in the reproduction, or which may significantly change the usual method of filming, are checked below.

L'Institut a microfilmé le meilleur exemplaire qu'il lui a été possible de se procurer. Les détails de cet exemplaire qui sont peut-être uniques du point de vue bibliographique, qui peuvent modifier une image reproduite, ou qui peuvent exiger une modification dans la méthode normale de filmage sont indiqués ci-dessous.

- Coloured covers/  
Couverture de couleur
- Covers damaged/  
Couverture endommagée
- Covers restored and/or laminated/  
Couverture restaurée et/ou pelliculée
- Cover title missing/  
Le titre de couverture manque
- Coloured maps/  
Cartes géographiques en couleur
- Coloured ink (i.e. other than blue or black)/  
Encre de couleur (i.e. autre que bleue ou noire)
- Coloured plates and/or illustrations/  
Planches et/ou illustrations en couleur
- Bound with other material/  
Relié avec d'autres documents
- Tight binding may cause shadows or distortion  
along interior margin/  
La reliure serrée peut causer de l'ombre ou de la  
distorsion le long de la marge intérieure
- Blank leaves added during restoration may  
appear within the text. Whenever possible, these  
have been omitted from filming/  
il se peut que certaines pages blanches ajoutées  
lors d'une restauration apparaissent dans le texte,  
mais, lorsque cela était possible, ces pages n'ont  
pas été filmées.
- Additional comments:/ [Printed ephemera] [4] p.  
Commentaires supplémentaires:

- Coloured pages/  
Pages de couleur
- Pages damaged/  
Pages endommagées
- Pages restored and/or laminated/  
Pages restaurées et/ou pelliculées
- Pages discoloured, stained or foxed/  
Pages décolorées, tachetées ou piquées
- Pages detached/  
Pages détachées
- Showthrough/  
Transparence
- Quality of print varies/  
Qualité inégale de l'impression
- Includes supplementary material/  
Comprend du matériel supplémentaire
- Only edition available/  
Seule édition disponible
- Pages wholly or partially obscured by errata  
slips, tissues, etc., have been refilmed to  
ensure the best possible image/  
Les pages totalement ou partiellement  
obscurcies par un feuillet d'errata, une pelure,  
etc., ont été filmées à nouveau de façon à  
obtenir la meilleure image possible.

This item is filmed at the reduction ratio checked below/  
Ce document est filmé au taux de réduction indiqué ci-dessous.

10X	14X	18X	22X	26X	30X
<input type="checkbox"/>	<input type="checkbox"/>	<input type="checkbox"/>	<input type="checkbox"/>	<input checked="" type="checkbox"/>	<input type="checkbox"/>
12X	16X	20X	24X	28X	32X

The copy filmed here has been reproduced thanks to the generosity of:

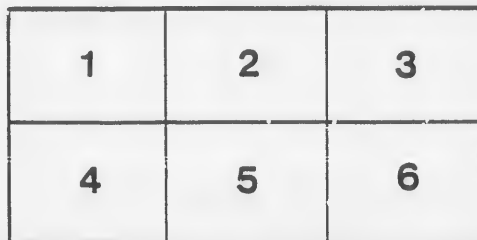
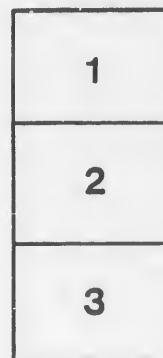
D.B. Weldon Library  
University of Western Ontario  
(Regional History Room)

The images appearing here are the best quality possible considering the condition and legibility of the original copy and in keeping with the filming contract specifications.

Original copies in printed paper covers are filmed beginning with the front cover and ending on the last page with a printed or illustrated impression, or the back cover when appropriate. All other original copies are filmed beginning on the first page with a printed or illustrated impression, and ending on the last page with a printed or illustrated impression.

The last recorded frame on each microfiche shell contain the symbol  $\rightarrow$  (meaning "CONTINUED"), or the symbol  $\nabla$  (meaning "END"), whichever applies.

Maps, plates, charts, etc., may be filmed at different reduction ratios. Those too large to be entirely included in one exposure are filmed beginning in the upper left hand corner, left to right and top to bottom, as many frames as required. The following diagrams illustrate the method:



L'exemplaire filmé fut reproduit grâce à la générosité de:

D.B. Weldon Library  
University of Western Ontario  
(Regional History Room)

Les images suivantes ont été reproduites avec le plus grand soin, compte tenu de la condition et de la netteté de l'exemplaire filmé, et en conformité avec les conditions du contrat de filmage.

Les exemplaires originaux dont la couverture en papier est imprimée sont filmés en commençant par le premier feuillet et en terminant soit par la dernière page qui comporte une empreinte d'impression ou d'illustration, soit par le second feuillet, selon le cas. Tous les autres exemplaires originaux sont filmés en commençant par la première page qui comporte une empreinte d'impression ou d'illustration et en terminant par la dernière page qui comporte une telle empreinte.

Un des symboles suivants apparaîtra sur la dernière image de chaque microfiche, selon le cas: le symbole  $\rightarrow$  signifie "A SUIVRE", le symbole  $\nabla$  signifie "FIN".

Les cartes, planches, tableaux, etc., peuvent être filmés à des taux de réduction différents. Lorsque le document est trop grand pour être reproduit en un seul cliché, il est filmé à partir de l'angle supérieur gauche, de gauche à droite, et de haut en bas, en prenant le nombre d'images nécessaire. Les diagrammes suivants illustrent la méthode.



# PAYNE & WESTON,

MASONIC TEMPLE,

RICHMOND STREET,

LONDON, ONTARIO.

## OUR TEAS

**WE** CALL special attention at the outset to the quality of our TEAS, which we sell at a small advance on cost, without the half-dozen profits of middlemen. They have been selected at the place of growth and purchased by us with the greatest possible care as to their strength, delicious flavor, fine drawing qualities and low prices. We do not handle colored Teas, nor do we practice any form of deception whatever. We are doing business in all parts of the Province with the highest satisfaction to our customers.

We particularly call the attention of not only our customers but all others who wish to purchase Pure Teas, that they can have their orders filled with the purest and best that the market affords, and that each succeeding order will be exactly the same in quality, and equally good in all respects, as the first order. Many of our new customers have informed us that they have heretofore dealt with other houses, and that they received very fair goods on their first order, but when their orders were duplicated they got a very inferior article. We wish to impress the fact upon all persons purchasing goods from us, that we guarantee to fill all their orders with the same good quality in all cases. We here state, for the benefit of our customers, that they will find our SECOND and THIRD grades of Teas superior, in most cases, to those sold by some Tea houses and grocery stores as BEST. We notice that many concerns which have lately sprung up in various parts of the country have made price-lists substantially the same as ours, and are giving liberal discounts, thus conveying the impression to purchasers that they give as good bargains as we do. But in such cases we would simply recommend that our customers compare our SECOND or THIRD quality with the best sold by these concerns, and we predict that our THIRD quality will, in most cases, prove to be superior to what they sell for the BEST (and which they have marked at our highest figures).

## → PRICE • LIST ←

*We guarantee that if any of the Teas bought at the following prices do not give satisfaction, we will refund the money of the purchaser :*

	OUR PRICES.	ORDINARY PRICES.		OUR PRICES.	ORDINARY PRICES.
No. 1 YOUNG HYSOY.	70c.	80c.	No. 3 GUNPOWDER.	50c.	60c.
No. 2 " "	60c.	75c.	No. 1 C. JAPAN,	65c.	75c.
No. 3 " "	50c.	60c.	No. 2 " "	60c.	70c.
No. 4 " "	45c.	55c.	No. 3 " "	50c.	60c.
No. 5 " "	40c.	50c.	No. 4 " "	35c.	45c.
No. 6 " "	33c.	40c.	No. 1 UNCOLORED JAPAN.	65c.	75c.
No. 7 " "	28c.	35c.	No. 2 " "	60c.	70c.
No. 1 GUNPOWDER.	70c.	80c.	No. 3 " "	50c.	60c.
No. 2 " "	60c.	70c.	No. 4 " "	40c.	50c.
			No. 1 TEA DUST, 5 lbs. for	\$1 00	

BLACKS AT THE SAME PRICES.

## → TERMS • TO • AGENTS ←

SAMPLES.—No other house that we know of gives such extraordinary inducements to Agents. On sending us \$2.00, we ship them a set of samples in a neat case, with which they can go to work at once and make big wages. The money which we charge for the samples will be returned at any time the Agent wishes to cease doing business with us; and we only exact it to prevent persons from sending for an outfit out of idle curiosity. We also provide cards, order sheets, etc., free of charge.

REMUNERATION.—We pay the astonishingly large commission of twenty-five per cent. In this way we wholesale the Tea to the Agent, who makes what profit the retailer would have. To show you that splendid wages can be made at this rate of remuneration, let an illustration be given:

Suppose you take orders for \$5 worth of Tea per day, that will bring you \$7.50 per week; \$10 per day will bring you \$15 per week, or \$780 per annum; \$20 per day will bring you \$30 per week, or \$1560 per year, and so on. Our agents have sold as high as \$250.00 in seven days, and \$20 per day is only the average. Every household uses Tea, and keeps needing it the year round.

FREIGHT OR EXPRESS.—On all orders exceeding \$25, we will pay half the freight or express. No other house does this.

CASH OR SECURITY.—Unless you can send cash with the order, less the commission, we require a bond of security, to be signed by the agent and some substantial friend. This is the only plan under which we feel at perfect freedom with our agents, and is better for all concerned. The bond only binds you to return the money for the goods we send you.

BE PROMPT.—Lose no time. Send for an outfit and get to work, or others will, and you will lose a rare chance. If you prefer to give security, send for a form of bond.

---

## EXTRAORDINARY INDUCEMENTS.

---

It is a fact that the more Tea we sell the greater bargains we can give to our customers, and with a view to stimulating agents to their fullest efforts, we offer the Extraordinary Inducements referred to below. We guarantee, at the same time, that we make no difference whatever in the quality of the Tea, and that we will refund the money in every instance where the fullest satisfaction is not given. With an order for \$20 worth of Tea, at any price, we will send, as a premium,

◁ A Beautiful Set of Gold Band China ▷

comprising forty-four pieces. These tea sets are of the finest English make, and fit to grace the table of a prince. They are really a chaste and lovely gift. This premium is within the reach of almost every lady as well as gentleman who can organize a club among her or his

neighbors. With this, however, we do not pay a commission. This elegant set of gold band china, of the best make and design, we give to every one of our agents (in addition to his commission of 25 per cent.) as soon as he has sent in orders amounting to \$150.

To the agent who sends in orders aggregating \$350, we will send one of the

**FINEST SOLID SILVER HUNTING CASE, STEM-WINDING WATCHES,**  
guaranteed for two years, by A. S. Murray & Co., of this city. This is no humbug, and is given along with the commission. We will also send this watch, valued at \$23, for an order for \$50 worth of Tea (without commission).

In addition to the commission of 25 per cent., we will give any agent who has sent in orders amounting to \$800.

**A Beautiful Hunting Case, Stem-Winding, 10-carat Gold Watch,**  
of the most handsome design, and guaranteed for five years, by A. S. Murray & Co., of this city. Or to any person who wants the watch and not the commission, we will send it on receipt of orders for \$100. The retail value of this watch is \$60.

---

### HOW CAN WE DO THIS?

---

The question is easily answered. By buying in immense quantities, and doing business on a safe, and fair, and square basis. Our agents everywhere are among the most respectable members of the community, and we want none to write us who are not industrious and respected. You will never regret an engagement with us.

**PAYNE & WESTON,**  
Masonic Temple, London, Ont.



