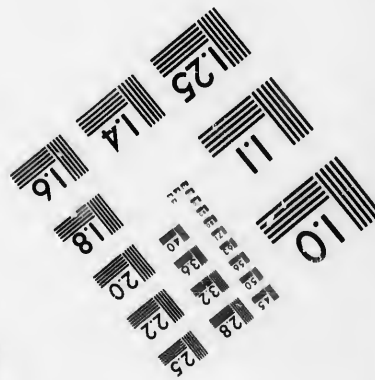
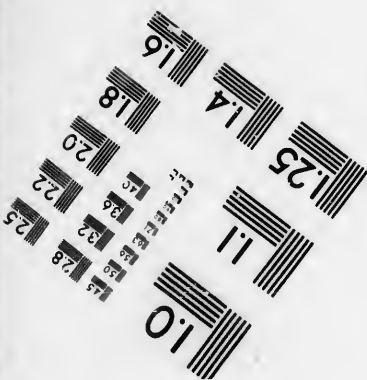
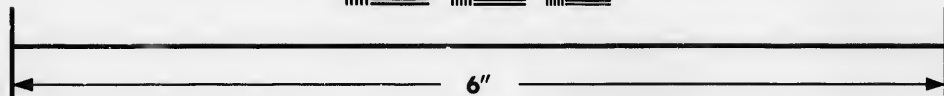
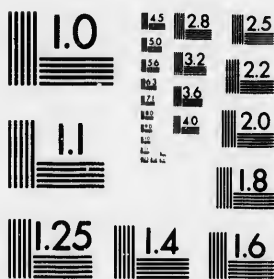


**IMAGE EVALUATION
TEST TARGET (MT-3)**



**Photographic
Sciences
Corporation**

23 WEST MAIN STREET
WESTER, N.Y. 14580
(716) 872-4503

15 28 25
18 32 22
19 20
18

**CIHM/ICMH
Microfiche
Series.**

**CIHM/ICMH
Collection de
microfiches.**



Canadian Institute for Historical Microreproductions / Institut canadien de microreproductions historiques

15
10
15

© 1986

The copy filmed here has been reproduced thanks to the generosity of:

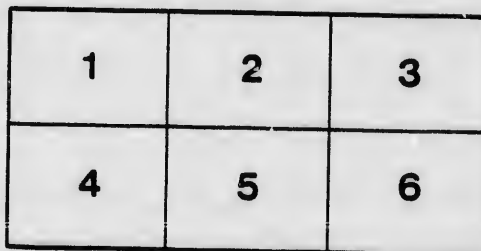
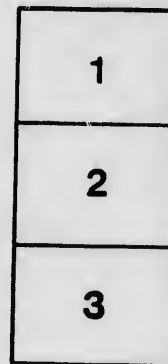
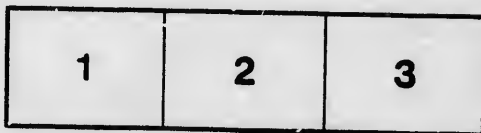
Manuscript Division
Public Archives of Canada

The images appearing here are the best quality possible considering the condition and legibility of the original copy and in keeping with the filming contract specifications.

Original copies in printed paper covers are filmed beginning with the front cover and ending on the last page with a printed or illustrated impression, or the back cover when appropriate. All other original copies are filmed beginning on the first page with a printed or illustrated impression, and ending on the last page with a printed or illustrated impression.

The last recorded frame on each microfiche shall contain the symbol \rightarrow (meaning "CONTINUED"), or the symbol ∇ (meaning "END"), whichever applies.

Maps, plates, charts, etc., may be filmed at different reduction ratios. Those too large to be entirely included in one exposure are filmed beginning in the upper left corner, left to right and top to bottom, as many frames as required. The following diagrams illustrate the method:



L'exemplaire filmé fut reproduit grâce à la générosité de:

Division des manuscrits
Archives publiques du Canada

Les images suivantes ont été reproduites avec le plus grand soin, compte tenu de la condition et de la netteté de l'exemplaire filmé, et en conformité avec les conditions du contrat de filmage.

Les exemplaires originaux dont la couverture en papier est imprimée sont filmés en commençant par le premier plat et en terminant soit par la dernière page qui comporte une empreinte d'impression ou d'illustration, soit par le second plat, selon le cas. Tous les autres exemplaires originaux sont filmés en commençant par la première page qui comporte une empreinte d'impression ou d'illustration et en terminant par la dernière page qui comporte une telle empreinte.

Un des symboles suivants apparaîtra sur la dernière image de chaque microfiche, selon le cas: le symbole \rightarrow signifie "A SUIVRE", le symbole ∇ signifie "FIN".

Les cartes, planches, tableaux, etc., peuvent être filmés à des taux de réduction différents. Lorsque le document est trop grand pour être reproduit en un seul cliché, il est filmé à partir de l'angle supérieur gauche, de gauche à droite, et de haut en bas, en prenant le nombre d'images nécessaire. Les diagrammes suivants illustrent la méthode.

Flo
P
Gro
P
Pai
Oils
Gla
P
Dry
P
Sug
F
Con
to
Han
Ch
to
Ma
Pow
Hid
e
Unc
P
Fis
Dry
I

T
for
S
S
S
A

C
I
car
the
usin

LAKE AND RIVER NAVIGATION COMPANY'S FREIGHT TARIFF.

FIRST CLASS.	SECOND CLASS.	THIRD CLASS.
Flour, Meal, Grain, Seed.	Vegetables, and Charcoal.	*Gypsum, per ton.....\$0.18
per bbl\$0.07½	in barrels, per bbl....\$0.06	Ground Plaster, per bbl. 0.04½
Groceries, and Liquors.	Pressed Hay, per ton.... 0.60	Brick, per thousand..... 0.51
per bbl 0.09	Pitch, Tar, and Cement.	Building, and other Stone,
Paints, per cwt..... 0.04½	in barrels 0.06	per ton 0.18
Oils, per bbl..... 0.09	Coals, Mineral, per ton.. 0.30	Clay, Sand, and Gravel,
Glass, and Crockeryware,	Coke, per ton..... 0.15	per ton 0.18
per bbl 0.09	Quartz, per ton..... 0.30	Grindstone, per ton..... 0.24
Dry Goods, and Cutlery.	Hardwood, per Cord.... 0.36	Soft Wood, per Cord.... 0.30
per bbl 0.09	Bark, and Lathwood, per	Wharf Logs, in scows ... 0.24
Sugar, and Molasses, per	Cord 0.42	Manures, and Marsh Mud 0.18
Hogshead 0.30	Ship Timber, per ton.... 0.30	Lime Stone..... 0.18
Cordage and Oakum, per	Spars, and Timber, per ton 0.30	
ton..... 0.36	Wharf Logs, in Rafts ... 0.30	
Hardware, per bbl..... 0.09	Posts, Sleepers, and Wood	
Chains, and Anchors, per	Rails, each 0.03	
ton..... 0.30	Lumber of all kinds. ... 0.36	
Machinery..... 0.36	Scrap Iron, Bar, Pig Iron.	
Powder, per 100 Hs.... 0.12	per ton 0.36	
Hides, and Sides Leather,	Shingles, per bundle.... 0.03	
each 0.03	Salt, per hhd 0.12	
Unenumerated Articles.	Lime, per hhd 0.21	
per bbl 0.09	do per bbl..... 0.06	
Fish, in barrels..... 0.09	Barrel Hoops, per M.... 0.21	
Dry Fish, and Beef, and	Hogshead Hoops, per M. 0.30	
Pork, in bbls each.... 0.09	Barrel Staves, per M.... 0.30	
	Fish Cask Staves, per M. 0.45	
	Hogshead Staves, per M. 0.90	

* A drawback of 10 per cent to be allowed to the shipper of any quantity of Plaster over and above 1000 Tons, in any one Season.

The Canal is to be divided into three Sections, which shall govern and regulate the rate of charge for Tollage, viz :—

- SECTION No. 1.—From Halifax Harbour into Lake Charles.....one third.
 - SECTION No. 2.—From Halifax Harbor into Fletcher's Lake.....two thirds.
 - SECTION No. 3.—From Halifax Harbor to the termination of the company's works..whole charge.
- And vice versa from Basin (SECTION No. 1. to Fletcher's Lake.
- of Minas to Halifax " " 2. to Lake Charles.
- Harbor. " " 3. to Halifax Harbor.

Charge for passing through a draw or Lift Bridge, or a single Lock—one sixth of the whole.

Persons in charge of Boats and Rafts to hand to the Superintendent a memorandum of contents of cargo; also, contents of rafts of timber and logs. Every facility will now be given to persons using the Locks and Inclined Planes, so as to prevent unnecessary delay, and all information given to those using the Company's Works.

By order of the President and Directors,
G. A. S. ORIGHTON,
Manager.

1867 tolls paid quarterly \$3,000.00
1870 tolls paid quarterly \$4,000.00

