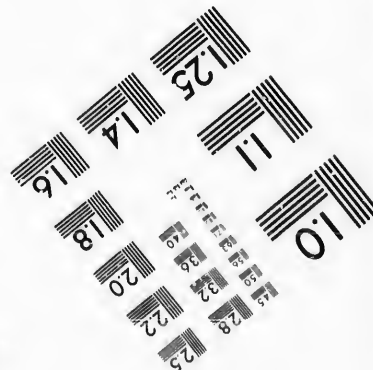
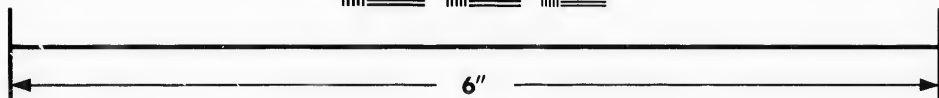
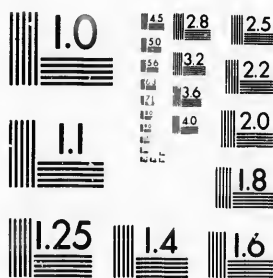


**IMAGE EVALUATION
TEST TARGET (MT-3)**



**Photographic
Sciences
Corporation**

23 WEST MAIN STREET
WEBSTER, N.Y. 14580
(716) 872-4503

14
16
18
20
22
25
28
32
36
40
45

**CIHM/ICMH
Microfiche
Series.**

**CIHM/ICMH
Collection de
microfiches.**



Canadian Institute for Historical Microreproductions / Institut canadien de microreproductions historiques

10
15
20
25
30
35
40
45
50

© 1987

Technical and Bibliographic Notes/Notes techniques et bibliographiques

The Institute has attempted to obtain the best original copy available for filming. Features of this copy which may be bibliographically unique, which may alter any of the images in the reproduction, or which may significantly change the usual method of filming, are checked below.

L'Institut a microfilmé le meilleur exemplaire qu'il lui a été possible de se procurer. Les détails de cet exemplaire qui sont peut-être uniques du point de vue bibliographique, qui peuvent modifier une image reproduite, ou qui peuvent exiger une modification dans la méthode normale de filmage sont indiqués ci-dessous.

- | | |
|--|--|
| <input type="checkbox"/> Coloured covers/
Couverture de couleur | <input type="checkbox"/> Coloured pages/
Pages de couleur |
| <input type="checkbox"/> Covers damaged/
Couverture endommagée | <input type="checkbox"/> Pages damaged/
Pages endommagées |
| <input type="checkbox"/> Covers restored and/or laminated/
Couverture restaurée et/ou pelliculée | <input type="checkbox"/> Pages restored and/or laminated/
Pages restaurées et/ou pelliculées |
| <input type="checkbox"/> Cover title missing/
Le titre de couverture manque | <input checked="" type="checkbox"/> Pages discoloured, stained or foxed/
Pages décolorées, tachetées ou piquées |
| <input type="checkbox"/> Coloured maps/
Cartes géographiques en couleur | <input type="checkbox"/> Pages detached/
Pages détachées |
| <input type="checkbox"/> Coloured ink (i.e. other than blue or black)/
Encre de couleur (i.e. autre que bleue ou noire) | <input checked="" type="checkbox"/> Showthrough/
Transparence |
| <input type="checkbox"/> Coloured plates and/or illustrations/
Planches et/ou illustrations en couleur | <input type="checkbox"/> Quality of print varies/
Qualité inégale de l'impression |
| <input type="checkbox"/> Bound with other material/
Relié avec d'autres documents | <input type="checkbox"/> Includes supplementary material/
Comprend du matériel supplémentaire |
| <input type="checkbox"/> Tight binding may cause shadows or distortion
along interior margin/
La reliure serrée peut causer de l'ombre ou de la
distorsion le long de la marge intérieure | <input type="checkbox"/> Only edition available/
Seule édition disponible |
| <input type="checkbox"/> Blank leaves added during restoration may
appear within the text. Whenever possible, these
have been omitted from filming/
Il se peut que certaines pages blanches ajoutées
lors d'une restauration apparaissent dans le texte,
mais, lorsque cela était possible, ces pages n'ont
pas été filmées. | <input type="checkbox"/> Pages wholly or partially obscured by errata
slips, tissues, etc., have been refilmed to
ensure the best possible image/
Les pages totalement ou partiellement
obscurcies par un feuillet d'errata, une pelure,
etc., ont été filmées à nouveau de façon à
obtenir la meilleure image possible. |
- Additional comments:/ [Printed ephemera] [4] p.
Commentaires supplémentaires:

This item is filmed at the reduction ratio checked below /
Ce document est filmé au taux de réduction indiqué ci-dessous.

10X	14X	18X	22X	26X	30X
<input type="checkbox"/>	<input type="checkbox"/>	<input type="checkbox"/>	<input checked="" type="checkbox"/>	<input type="checkbox"/>	<input type="checkbox"/>
12X	16X	20X	24X	28X	32X

The copy filmed here has been reproduced thanks to the generosity of:

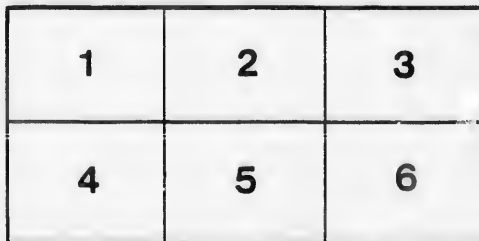
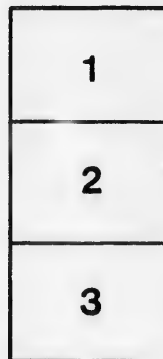
New Brunswick Museum
Saint John

The images appearing here are the best quality possible considering the condition and legibility of the original copy and in keeping with the filming contract specifications.

Original copies in printed paper covers are filmed beginning with the front cover and ending on the last page with a printed or illustrated impression, or the back cover when appropriate. All other original copies are filmed beginning on the first page with a printed or illustrated impression, and ending on the last page with a printed or illustrated impression.

The last recorded frame on each microfiche shall contain the symbol \rightarrow (meaning "CONTINUED"), or the symbol ∇ (meaning "END"), whichever applies.

Maps, plates, charts, etc., may be filmed at different reduction ratios. Those too large to be entirely included in one exposure are filmed beginning in the upper left hand corner, left to right and top to bottom, as many frames as required. The following diagrams illustrate the method:



L'exemplaire filmé fut reproduit grâce à la générosité de:

New Brunswick Museum
Saint John

Les images suivantes ont été reproduites avec le plus grand soin, compte tenu de la condition et de la netteté de l'exemplaire filmé, et en conformité avec les conditions du contrat de filmage.

Les exemplaires originaux dont la couverture en papier est imprimée sont filmés en commençant par le premier plat et en terminant soit par la dernière page qui comporte une empreinte d'impression ou d'illustration, soit par le second plat, selon le cas. Tous les autres exemplaires originaux sont filmés en commençant par la première page qui comporte une empreinte d'impression ou d'illustration et en terminant par la dernière page qui comporte une telle empreinte.

Un des symboles suivants apparaîtra sur la dernière image de chaque microfiche, selon le cas: le symbole \rightarrow signifie "A SUIVRE", le symbole ∇ signifie "FIN".

Les cartes, planches, tableaux, etc., peuvent être filmés à des taux de réduction différents. Lorsque le document est trop grand pour être reproduit en un seul cliché, il est filmé à partir de l'angle supérieur gauche, de gauche à droite, et de haut en bas, en prenant le nombre d'images nécessaire. Les diagrammes suivants illustrent la méthode.

STATISTICS

OF THE VARIOUS

Religious Denominations & Dominion of Canada

COMPILED FROM THE DOMINION CENSUS STATEMENTS
OF 1871 AND 1891, INCLUDING A PERIOD OF

TWENTY YEARS.

DOMINION OF CANADA.

Statement shewing the numbers of the different Denominations in the **DOMINION**, and also the respective gains which they made during the twenty year period from 1871 to 1891:

Denominations.	1871	1891	Gains.	Per Centages.
Roman Catholics,	1,492,029	1,888,422	396,393	26½
Methodists, . . .	567,091	783,276	216,185	38
Presbyterians, . .	544,998	655,411	110,413	20
Church of England,	494,049	568,976	74,927	15
Baptists,	239,343	276,809	37,466	15½
All others,	148,251	201,621	53,370	36
	3,485,761	4,374,515	888,754	25½

It will thus be seen that the Church of England is only the *fourth* Denomination in point of numbers in the Dominion, and made the *smallest proportionate gain* of them all during the twenty year period, viz. : 15% : the largest gain, viz. : 38% having been made by the Methodists.

DOMINION OF CANADA.

Statement shewing the numbers of members of the Church of England in the four separate **PROVINCES** in the years 1871 and 1891:

Provinces.	1871	1891	Numbers.	Per Centages.
Ontario, . . .	330,995	385,999	<i>Gain</i> 55,004	16½
Quebec, . . .	62,449	75,472	" 13,023	20¾
Nova Scotia, .	55,124	54,410	" 9,286	11½
New Brunswick,	45,481	43,095	<i>Loss</i> 2,386	5¼
	494,049	568,976	<i>Gain</i> 74,927	15

It will thus be seen that New Brunswick was *the only Province of the Dominion in which the Church of England declined* during the twenty year period, and it may be added that, with the single exception of the Baptists in the Province of Quebec, the Church of England in New Brunswick was *the only Denomination which declined in numbers in either of the four Provinces.*

PROVINCE OF NEW BRUNSWICK.

Statement shewing the numbers of the different Denominations in **NEW BRUNSWICK** in the years 1871 and 1891:

Denominations.	1871	1891	Numbers.	Per Centages.
Roman Catholics,	96,016	115,961	<i>Gain</i> 19,945	20¾
Baptists, . . .	70,597	79,649	" 9,052	12¾
Church of England,	45,481	43,095	<i>Loss</i> 2,386	5¼
Presbyterians, . .	38,852	40,639	<i>Gain</i> 1,787	4½
Methodists, . . .	29,856	35,504	" 5,648	19
All others, . . .	4,792	6,415	" 1,623	34
	285,594	321,263	<i>Gain</i> 35,669	12½

It will thus be seen that the Church of England was *the only Denomination in the Province which declined in numbers* during the twenty year period, and that if her decline *continues* at the same rate the Presbyterian body will soon take her place as *third* in point of numbers among the Denominations in the Province.

PROVINCE OF NEW BRUNSWICK.

Statement shewing the changes in the total population of
Each County in New Brunswick from 1871 to 1891, and
 also the gains or losses of the Church of England in
 each County during the same period:

Counties.	1871	1891	Total.	Church of England.
Albert, . .	10,672	10,971	<i>Gain</i> 299	<i>Loss</i> 213
Carleton, . .	19,938	22,529	" 2,591	<i>Gain</i> 46
Charlotte, . .	25,882	23,752	<i>Loss</i> 2,130	<i>Loss</i> 1,222
Gloucester, . .	18,810	24,897	<i>Gain</i> 6,087	" 200
Kent, . .	19,101	23,845	" 4,744	" 49
Kings, . .	24,593	23,087	<i>Loss</i> 1,506	" 948
Northumberland, . .	20,116	25,713	<i>Gain</i> 5,597	<i>Gain</i> 228
Queens, . .	13,847	12,152	<i>Loss</i> 1,695	<i>Loss</i> 656
Restigouche, . .	5,575	8,308	<i>Gain</i> 2,733	<i>Gain</i> 368
St. John, . .	52,120	49,574	<i>Loss</i> 2,546	<i>Loss</i> 1,087
Sunbury, . .	6,824	5,762	" 1,062	<i>Gain</i> 29
Victoria, . .	11,641	18,217	<i>Gain</i> 6,576	" 745
Westmorland, . .	29,335	41,477	" 12,142	" 427
York, . . .	27,140	30,979	" 3,839	" 146
	285,594	321,263	<i>Gain</i> 35,669	<i>Loss</i> 2,386

It will thus be seen that while there was a total gain of 44,608 people in 9 of the 14 Counties, the Church of England only gained 1,498 members, and lost 3,884 members in the other 5 Counties, in some of which the total population had very largely *increased*. The results in the Counties of Carleton, Gloucester, Kent, Northumberland, Victoria, Westmorland and York are particularly disappointing, and with the single exception of Sunbury County the returns are all most disheartening, so far as the Church of England is concerned.

PROVINCE OF NEW BRUNSWICK.

Statement shewing the changes in the total population of the **Principal Towns in New Brunswick** from 1871 to 1891, and also the gains or losses of the Church of England in each of same :

Towns.	1871	1891	Total.	Church of England.
Bathurst, .	4,469	4,815	<i>gain</i> 346	<i>loss</i> 93
Chatham, .	4,203	5,644	" 1,441	" 35
Dorchester,	5,617	6,357	" 740	" 34
Fredericton,	6,006	6,502	" 496	<i>gain</i> 269
Gagetown, .	1,282	1,029	<i>loss</i> 253	<i>loss</i> 91
Moncton, .	4,810	13,927	<i>gain</i> 9,117	<i>gain</i> 714
Sussex, .	5,606	5,599	<i>loss</i> 7	" 46
Sackville, .	3,766	4,982	<i>gain</i> 1,216	" 16
Shediac, .	5,756	6,216	" 460	<i>loss</i> 193
St. John, .	41,320	39,179	<i>loss</i> 2,141	" 817
St. Stephen,	6,515	6,134	" 381	" 290
St. George,	3,314	2,757	" 557	" 196
St. Andrews,	2,961	2,452	" 509	" 153
Westfield, .	1,500	1,172	" 328	" 128
Woodstock,	3,963	5,055	<i>gain</i> 1,092	<i>gain</i> 12
	101,088	111,820	<i>Gain</i> 10,732	<i>Loss</i> 973

It will thus be seen that, with the exception of Sussex, the Church of England *lost far more than her numerical proportion* in the Towns where the total population declined, and that she *either lost ground altogether, or made much smaller proportionate gains* than the other Denominations, in all the other Towns, with the exception of Fredericton; the net result being a *loss* of 973 members to the Church of England in the fifteen Towns, where the total net *gain* in population amounted to 10,732 people, which is certainly a very poor record for the Church of England.



