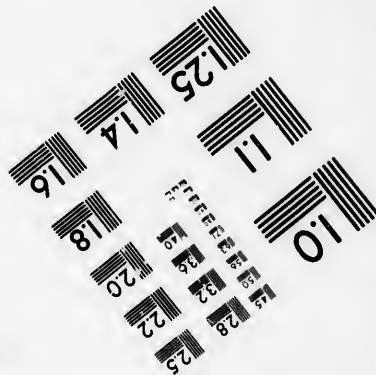
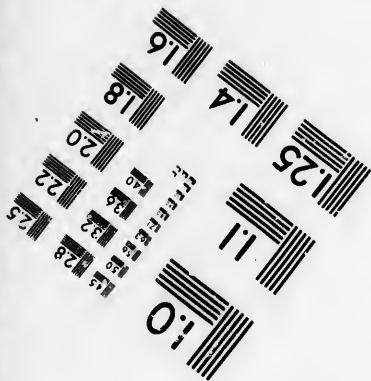
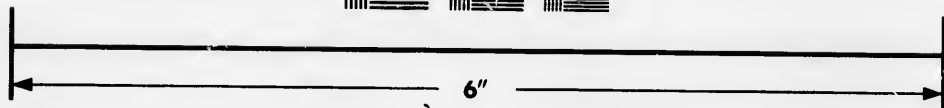
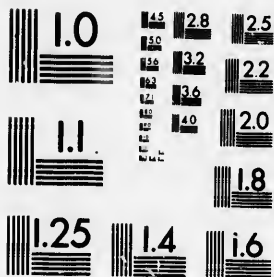


**IMAGE EVALUATION  
TEST TARGET (MT-3)**



**Photographic  
Sciences  
Corporation**

23 WEST MAIN STREET  
WEBSTER, N.Y. 14580  
(716) 872-4503



Technical and Bibliographic Notes/Notes techniques et bibliographiques

The Institute has attempted to obtain the best original copy available for filming. Features of this copy which may be bibliographically unique, which may alter any of the images in the reproduction, or which may significantly change the usual method of filming, are checked below.

L'Institut a microfilmé le meilleur exemplaire qu'il lui a été possible de se procurer. Les détails de cet exemplaire qui sont peut-être uniques du point de vue bibliographique, qui peuvent modifier une image reproduite, ou qui peuvent exiger une modification dans la méthode normale de filmage sont indiqués ci-dessous.

- |  |  |
|--|--|
| <input type="checkbox"/> Coloured covers/<br>Couverture de couleur   | <input type="checkbox"/> Coloured pages/<br>Pages de couleur   |
| <input type="checkbox"/> Covers damaged/<br>Couverture endommagée  | <input type="checkbox"/> Pages damaged/<br>Pages endommagées   |
| <input type="checkbox"/> Covers restored and/or laminated/<br>Couverture restaurée et/ou pelliculée  | <input type="checkbox"/> Pages restored and/or laminated/<br>Pages restaurées et/ou pelliculées  |
| <input type="checkbox"/> Cover title missing/<br>Le titre de couverture manque   | <input checked="" type="checkbox"/> Pages discoloured, stained or foxed/<br>Pages décolorées, tachetées ou piquées   |
| <input type="checkbox"/> Coloured maps/<br>Cartes géographiques en couleur   | <input type="checkbox"/> Pages detached/<br>Pages détachées  |
| <input type="checkbox"/> Coloured ink (i.e. other than blue or black)/<br>Encre de couleur (i.e. autre que bleue ou noire)   | <input checked="" type="checkbox"/> Showthrough/<br>Transparence   |
| <input type="checkbox"/> Coloured plates and/or illustrations/<br>Planches et/ou illustrations en couleur  | <input type="checkbox"/> Quality of print varies/<br>Qualité inégale de l'impression   |
| <input type="checkbox"/> Bound with other material/<br>Relié avec d'autres documents   | <input type="checkbox"/> Includes supplementary material/<br>Comprend du matériel supplémentaire   |
| <input type="checkbox"/> Tight binding may cause shadows or distortion<br>along interior margin/<br>La reliure serrée peut causer de l'ombre ou de la<br>distorsion le long de la marge intérieure   | <input type="checkbox"/> Only edition available/<br>Seule édition disponible   |
| <input type="checkbox"/> Blank leaves added during restoration may<br>appear within the text. Whenever possible, these<br>have been omitted from filming/<br>Il se peut que certaines pages blanches ajoutées<br>lors d'une restauration apparaissent dans le texte,<br>mais, lorsque cela était possible, ces pages n'ont<br>pas été filmées. | <input type="checkbox"/> Pages wholly or partially obscured by errata<br>slips, tissues, etc., have been refilmed to<br>ensure the best possible image/<br>Les pages totalement ou partiellement<br>obscurcies par un feuillet d'errata, une pelure,<br>etc., ont été filmées à nouveau de façon à<br>obtenir la meilleure image possible. |
- Additional comments: [Printed ephemera] 1 sheet (verso blank)  
Commentaires supplémentaires:

This item is filmed at the reduction ratio checked below/  
Ce document est filmé au taux de réduction indiqué ci-dessous.

10X	12X	14X	16X	18X	20X	22X	24X	26X	28X	30X	32X
					✓						

The copy filmed here has been reproduced thanks to the generosity of:

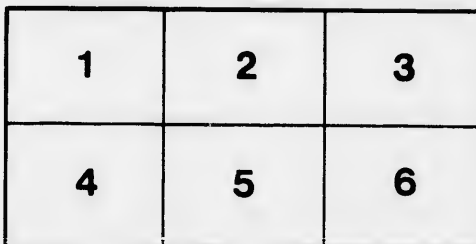
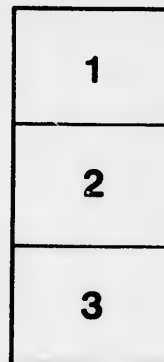
New Brunswick Museum  
Saint John

The images appearing here are the best quality possible considering the condition and legibility of the original copy and in keeping with the filming contract specifications.

Original copies in printed paper covers are filmed beginning with the front cover and ending on the last page with a printed or illustrated impression, or the back cover when appropriate. All other original copies are filmed beginning on the first page with a printed or illustrated impression, and ending on the last page with a printed or illustrated impression.

The last recorded frame on each microfiche shall contain the symbol  $\rightarrow$  (meaning "CONTINUED"), or the symbol  $\nabla$  (meaning "END"), whichever applies.

Maps, plates, charts, etc., may be filmed at different reduction ratios. Those too large to be entirely included in one exposure are filmed beginning in the upper left hand corner, left to right and top to bottom, as many frames as required. The following diagrams illustrate the method:



L'exemplaire filmé fut reproduit grâce à la générosité de:

New Brunswick Museum  
Saint John

Les images suivantes ont été reproduites avec le plus grand soin, compte tenu de la condition et de la netteté de l'exemplaire filmé, et en conformité avec les conditions du contrat de filmage.

Les exemplaires originaux dont la couverture en papier est imprimée sont filmés en commençant par le premier plat et en terminant soit par la dernière page qui comporte une empreinte d'impression ou d'illustration, soit par le second plat, selon le cas. Tous les autres exemplaires originaux sont filmés en commençant par la première page qui comporte une empreinte d'impression ou d'illustration et en terminant par la dernière page qui comporte une telle empreinte.

Un des symboles suivants apparaîtra sur la dernière image de chaque microfiche, selon le cas: le symbole  $\rightarrow$  signifie "A SUIVRE", le symbole  $\nabla$  signifie "FIN".

Les cartes, planches, tableaux, etc., peuvent être filmés à des taux de réduction différents. Lorsque le document est trop grand pour être reproduit en un seul cliché, il est filmé à partir de l'angle supérieur gauche, de gauche à droite, et de haut en bas, en prenant le nombre d'images nécessaire. Les diagrammes suivants illustrent la méthode.

ire  
détails  
es du  
modifier  
er une  
filmage

es

errata  
to

pelure,  
on à

32X

# PARISH OF SIMON AGRICULTURAL

---

---

**The Directors offer the following  
peted for by the members**

To the Farmer who shall have the best Field of Wheat not less than half an A

To the Farmer who shall have the best Field of White Oats, not less than an

To the Farmer who shall have the best Field of White Oats, not less than an

To the Farmer who shall have the best Field of Black Oats, not less than an A

To the Farmer who shall have the best Field of Black Oats, not less than an A

To the Farmer who shall have the best Field of Grey Buckwheat, not less than

To the Farmer who shall have the best Field of Rough Buckwheat, on new or c

To the Farmer who shall have the best Field of Turnips, not less than half an

To the Farmer who shall have the best Field of Potatoes, on new land not less

To the Farmer who shall have the best Field of Potatoes, not less than an Acr

To the Farmer who shall have the best Field of Carrots not less than a quarter

To the Farmer who shall have the best Field Stumped and Ploughed, not less

To the Farmer who shall have the best Field Stumped and Ploughed, not less

for two acres excluded ;

To the Farmer who shall have the most suitable Barn for Stock and for housin

Competitors are requested to give in their names to the  
August next, when the Judges will be appointed.

---

---

## PREMIU

To be given at the Annual Fair  
held at Loch Lo

# **SIMONDS' DISTRICT RURAL SOCIETY.**

---

---

**following Premiums to be com-  
members of the Society:--**

- less than half an Acre—first Prize £1, second 15s., third 10s ;
  - not less than an Acre on new land—first £1, second 15s., third 10s ;
  - not less than an Acre on old land—first £1, second 15s., third 10s ;
  - not less than an Acre on new land—first £1, second 15s., third 10s ;
  - not less than an Acre on old land—first £1, second 15s., third 10s ;
  - wheat, not less than an Acre on new or old land—first £1, second 15s., third 10s ;
  - oatmeal, on new or old land—first £1, second 15s., third 10s ;
  - not less than half an Acre—first £1 5s., second 15s., third 10s ;
  - on new land not less than an Acre—first £1, second 15s., third 10s ;
  - not less than an Acre, on old land—first £1, second 15s., third 10s ;
  - not less than a quarter of an Acre—first £1, second 15s., third 10s ;
  - Ploughed, not less than two Acres—first £1, second 15s., third 10s.
  - Ploughed, not less than an Acre—first £1, second 15s., third 10s., competitors
  - Stock and for housing Manure—first prize £1, second 15s., third 10s ;
- their names to the Secretary on the first Saturday in  
appointed.
- 
- 

## **PREMIUMS**

**Annual Fair and Cattle Show to be  
Loch Lomond on**

---

---

held at Loch Le

# THURSDAY

the 18th of October

	1st prize.			2nd.			3rd.			
	£	s.	d.	£	s.	d.	s.	d.		
Best Bull, three years old or over, thorough-bred, - - - -	1	0	0	0	15	0	10	0	Best Bull	
Two years old Bull, thorough-bred, - - - -	1	0	0	0	15	0	10	0	Sow	
One year old Bull, - - - -	0	15	0	0	10	0	5	0	Firk	
Dairy Cow, thorough-bred, -	1	0	0	0	15	0	10	0	50	
Two years old Heifer, thorough-bred, - - - -	0	15	0	0	10	0	7	6	10 lb	
One year old Heifer, thorough-bred, - - - -	0	10	0	0	7	6	5	0	4 lbs	
Native Cow, (dairy) - - - -	0	15	0	0	10	0	7	6	fo	
Two years old Heifer, native,	0	7	6	0	6	3	5	0	Che	
One year Old Heifer, native,	0	7	6	0	6	3	5	0	Bu	
Bull Calf, - - - - -	0	7	6	0	5	0	0	0	Bu	
Heifer Calf, - - - - -	0	7	6	0	5	0	0	0	Bu	
Mare and Colt suitable for Agricultural purposes, -	1	0	0	0	15	0	10	0	Bu	
Three years old Colt, - - - -	0	15	0	0	10	0	7	6	Bu	
Two years old Colt, - - - -	0	15	0	0	10	0	7	6	Bu	
One year old Colt, - - - -	0	10	0	0	7	6	5	0	Bu	
Pair of Working Oxen, - -	0	15	0	0	10	0	5	0	Bu	
Ram, - - - - -	0	10	0	0	7	6	5	0	Be	
Ewe, - - - - -	0	10	0	0	7	6	5	0	Be	
Pair of Lambs, Ram and Ewe,	0	10	0	0	7	6	5	0		

There will be no Premium given to more competitors.

JOHN J

Simonds, 24th April, 1860.

Loch Lomond on

# WEDNESDAY

of October next:—

3rd.			1st prize.			2nd.			3rd.	
s.	d.		£	s.	d.	£	s.	d.	s.	d.
10	0	Best Boar, . . . . .	0	10	0	0	7	6	5	0
		Sow, . . . . .	0	10	0	0	7	6	5	0
10	0	Firkin Butter, not less than								
		50 lbs., . . . . .	0	12	6	0	10	0	7	6
5	0	10 lbs. Roll Butter, . . . . .	0	10	0	0	7	6	5	0
10	0	4 lbs. Roll Butter, competitors								
		for ten pounds excluded, -	0	7	6	0	5	0	2	6
7	6	Cheese, not less than 10 lbs.,	0	5	0	0	3	9	2	6
5	0	Bushel Wheat, . . . . .	0	6	3	0	5	0	3	9
7	6	Bushel White Oats, . . . . .	0	4	0	0	3	9	2	6
5	0	Bushel Black Oats, . . . . .	0	4	0	0	3	9	2	6
5	0	Bushel Grey Buckwheat, . . . . .	0	4	0	0	3	9	2	6
5	0	Bushel Rough Buckwheat, . . . . .	0	4	0	0	3	9	2	6
0	0	Bushel Swedish Turnips, . . . . .	0	4	0	0	3	9	2	6
0	0	Bushel Yellow Aberdeen do., . . . . .	0	4	0	0	3	9	2	6
10	0	Bushel Early Horn Carrots, . . . . .	0	4	0	0	3	9	2	6
7	6	Bushel Long Orange do., . . . . .	0	4	0	0	3	9	2	6
7	6	Bushel Apples, . . . . .	0	4	0	0	3	9	2	6
5	0	Bushel Early Blue Potatoes, . . . . .	0	5	0	0	3	9	2	6
5	0	Bushel any other sort do., . . . . .	0	5	0	0	3	9	2	6
5	0	Bushel Onions, . . . . .	0	4	0	0	3	9	2	6
5	0	Best 20 yards Homespun, . . . . .	0	10	0	0	7	6	5	0
5	0	Best 20 yards White Flannel . . . . .	0	10	0	0	7	6	5	0

Prize given where there are not two

**JOHN JORDAN, Jr.,**  
*Secretary.*

1860.

CHUBB & CO., Printers

Tray 30  
 Broadsides  
 12



