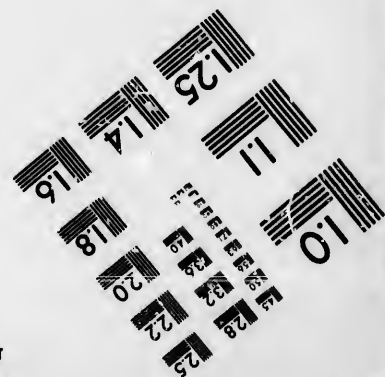
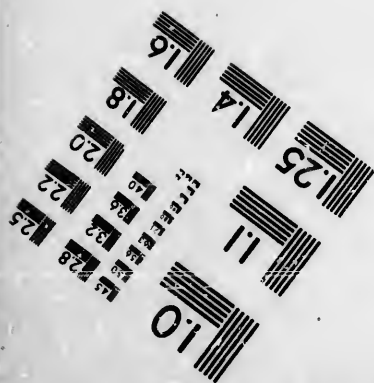
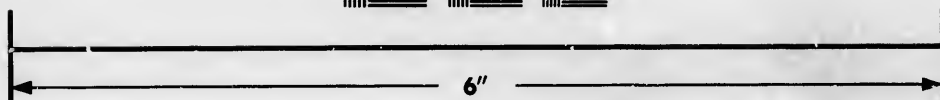
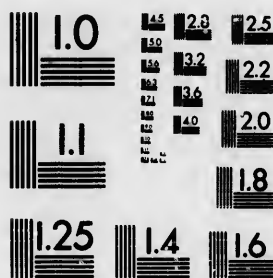


**IMAGE EVALUATION
TEST TARGET (MT-3)**



**Photographic
Sciences
Corporation**

23 WEST MAIN STREET
WEBSTER, N.Y. 14580
(716) 873-4503



**CIHM/ICMH
Microfiche
Series.**

**CIHM/ICMH
Collection de
microfiches.**



Canadian Institute for Historical Microreproductions / Institut canadien de microreproductions historiques



© 1986

Technical and Bibliographic Notes/Notes techniques et bibliographiques

The Institute has attempted to obtain the best original copy available for filming. Features of this copy which may be bibliographically unique, which may alter any of the images in the reproduction, or which may significantly change the usual method of filming, are checked below.

L'Institut a microfilmé le meilleur exemplaire qu'il lui a été possible de se procurer. Les détails de cet exemplaire qui sont peut-être uniques du point de vue bibliographique, qui peuvent modifier une image reproduite, ou qui peuvent exiger une modification dans la méthode normale de filmage sont indiqués ci-dessous.

- | | |
|--|--|
| <input checked="" type="checkbox"/> Coloured covers/
Couverture de couleur | <input type="checkbox"/> Coloured pages/
Pages de couleur |
| <input type="checkbox"/> Covers damaged/
Couverture endommagée | <input type="checkbox"/> Pages damaged/
Pages endommagées |
| <input type="checkbox"/> Covers restored and/or laminated/
Couverture restaurée et/ou pelliculée | <input checked="" type="checkbox"/> Pages restored and/or laminated/
Pages restaurées et/ou pelliculées |
| <input type="checkbox"/> Cover title missing/
Le titre de couverture manque | <input checked="" type="checkbox"/> Pages discoloured, stained or foxed/
Pages décolorées, tachetées ou piquées |
| <input type="checkbox"/> Coloured maps/
Cartes géographiques en couleur | <input type="checkbox"/> Pages detached/
Pages détachées |
| <input type="checkbox"/> Coloured ink (i.e. other than blue or black)/
Encre de couleur (i.e. autre que bleue ou noire) | <input checked="" type="checkbox"/> Showthrough/
Transparence |
| <input type="checkbox"/> Coloured plates and/or illustrations/
Planches et/ou illustrations en couleur | <input type="checkbox"/> Quality of print varies/
Qualité inégale de l'impression |
| <input type="checkbox"/> Bound with other material/
Relié avec d'autres documents | <input type="checkbox"/> Includes supplementary material/
Comprend du matériel supplémentaire |
| <input type="checkbox"/> Tight binding may cause shadows or distortion
along interior margin/
Le reliure serrée peut causer de l'ombre ou de la
distorsion le long de la marge intérieure | <input type="checkbox"/> Only edition available/
Seule édition disponible |
| <input type="checkbox"/> Blank leaves added during restoration may
appear within the text. Whenever possible, these
have been omitted from filming/
Il se peut que certaines pages blanches ajoutées
lors d'une restauration apparaissent dans le texte,
mais, lorsque cela était possible, ces pages n'ont
pas été filmées. | <input type="checkbox"/> Pages wholly or partially obscured by errata
slips, tissues, etc., have been refilmed to
ensure the best possible image/
Les pages totalement ou partiellement
obscurcies par un feuillet d'errata, une pelure,
etc., ont été filmées à nouveau de façon à
obtenir la meilleure image possible. |
| <input checked="" type="checkbox"/> Additional comments: / [Printed ephemera] 1 sheet (verso blank)
Commentaires supplémentaires: | |

This item is filmed at the reduction ratio checked below/
Ce document est filmé au taux de réduction indiqué ci-dessous.

10X	14X	18X	22X	26X	30X
<input type="checkbox"/>	<input type="checkbox"/>	<input type="checkbox"/>	<input checked="" type="checkbox"/>	<input type="checkbox"/>	<input type="checkbox"/>
12X	16X	20X	24X	28X	32X

The copy filmed here has been reproduced thanks to the generosity of:

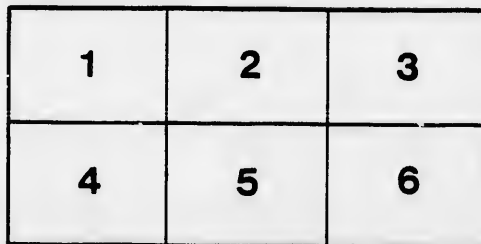
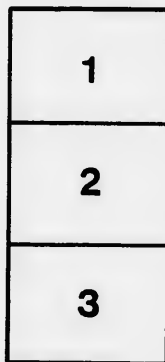
New Brunswick Museum
Saint John

The images appearing here are the best quality possible considering the condition and legibility of the original copy and in keeping with the filming contract specifications.

Original copies in printed paper covers are filmed beginning with the front cover and ending on the last page with a printed or illustrated impression, or the back cover when appropriate. All other original copies are filmed beginning on the first page with a printed or illustrated impression, and ending on the last page with a printed or illustrated impression.

The last recorded frame on each microfiche shall contain the symbol \rightarrow (meaning "CONTINUED"), or the symbol ∇ (meaning "END"), whichever applies.

Maps, plates, charts, etc., may be filmed at different reduction ratios. Those too large to be entirely included in one exposure are filmed beginning in the upper left hand corner, left to right and top to bottom, as many frames as required. The following diagram illustrates the method:



L'exemplaire filmé fut reproduit grâce à la générosité de:

New Brunswick Museum
Saint John

Les images suivantes ont été reproduites avec le plus grand soin, compte tenu de la condition et de la netteté de l'exemplaire filmé, et en conformité avec les conditions du contrat de filmage.

Les exemplaires originaux dont la couverture en papier est imprimée sont filmés en commençant par le premier plat et en terminant soit par la dernière page qui comporte une empreinte d'impression ou d'illustration, soit par le second plat, selon le cas. Tous les autres exemplaires originaux sont filmés en commençant par la première page qui comporte une empreinte d'impression ou d'illustration et en terminant par la dernière page qui comporte une telle empreinte.

Un des symboles suivants apparaîtra sur la dernière image de chaque microfiche, selon le cas: le symbole \rightarrow signifie "A SUIVRE", le symbole ∇ signifie "FIN".

Les cartes, planches, tableaux, etc., peuvent être filmés à des taux de réduction différents. Lorsque le document est trop grand pour être reproduit en un seul cliché, il est filmé à partir de l'angle supérieur gauche, de gauche à droite, et de haut en bas, en prenant le nombre d'images nécessaire. Les diagrammes suivants illustrent la méthode.

ire
détails
es du
modifier
er une
filmage

es

errata
l to
t
e pelure,
on à



32X

JUN 6

1951
**THE
NEW BRUNSWICK
MUSEUM**

Circular. --- Send to your neighbour.)

Saint John, N. B., 14th March, 1848.

Sir,

AT the CONVENTION of the PROVINCIAL TEMPERANCE UNION, recently held in FREDERICTON, the following Resolution was, after mature and anxious deliberation, carried by a large majority :

"RESOLVED, That whereas in the opinion of the Convention, the traffic in ardent spirit and other intoxicating liquors is morally wrong, therefore any law which provides for licensing that traffic must also be morally wrong."

It has been the growing conviction of a large portion of the temperance community in this Province, and especially in the two Cities, that the time for Legislative action in this matter is at hand. The precise mode however for dealing with the evil is not the subject of equal agreement. That the trade itself is wrong;—that it is productive of incalculable evil, morally; socially, and politically;—that it undermines and neutralizes all religious and moral influences: carries a withering curse into all social circles: impoverishes, sensualizes, and degrades all communities and countries, in exact ratio to its activity and extensiveness, are propositions so incontrovertibly true, as to call for the serious consideration of all religious and moral men, of all lovers of peace and social order, and of all patriots of what political creed soever.

From the diversified opinions as to the course of action necessary, we enumerate three :

- 1st.—That the trade should be positively prohibited, and adequate means adopted for its total suppression ;
- 2d.—That the *unlicensed* trade should be visited with severe penalties, rigidly enforced, and the laws regulating the licensed trader faithfully executed ;
- 3d.—That all Legislative sanction and countenance should be withdrawn from the traffic, and the business allowed to take its own course without license or prohibition.

Against the 1st opinion it is affirmed, that the history of the trade satisfactorily demonstrates the impossibility of its legal abolition, the severest penalties, DEATH itself, having been found insufficient to check a trade, which when prohibited, offers the hope of great lucrative remuneration.

Against the 2d method it is argued, that while Legislative sanction is given to the trade, it is constituted *honest and respectable* ; and that with this *lawful* argument, *respectable and honorable men*, (so called,) will always be found to carry it on. It is further added, that no system can be devised, and no penalties imposed which will effectually root up the UNLICENSED TRADE.

To the 3rd means it is objected, that withdrawing prohibitions, penalties, licenses, and countenance from the trade, will cause increased consumption, and consequently increased misery and crime.

You will at once perceive that the subject is of a perplexing character ; it is hoped however, that the difficulties are not insurmountable. With a view to create an agitation, co-extensive with the limits of the Province, and thereby to elicit at the Meeting of the Convention, in September next, the collected opinions of all the friends of our noble TEMPERANCE REFORMATION, we have, in obedience to the duty imposed upon us by the last Convention, prepared this Circular, and we now respectfully solicit you will be pleased to give the matter your own careful attention, and then use your influence in its agitation and discussion, at all proper times, and on all suitable occasions.

We are, Sir,

Very respectfully, Yours, &c.

P. LE SUEUR,
S. L. TILLEY,
W. H. A. KEANS.

