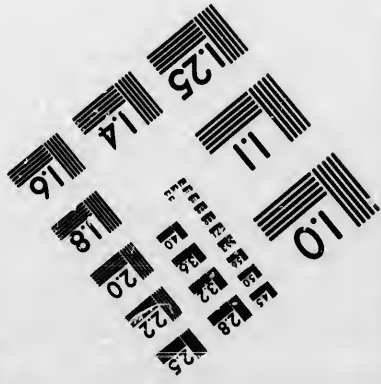
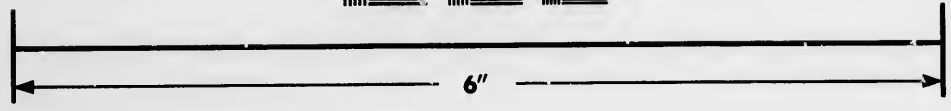
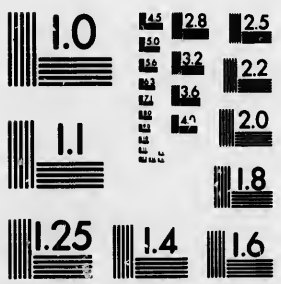


**IMAGE EVALUATION
TEST TARGET (MT-3)**



**Photographic
Sciences
Corporation**

23 WEST MAIN STREET
WEBSTER, N.Y. 14580
(716) 872-4503

2.8
2.5
2.2
2.0
1.8

**CIHM/ICMH
Microfiche
Series.**

**CIHM/ICMH
Collection de
microfiches.**



Canadian Institute for Historical Microreproductions. / Institut canadien de microreproductions historiques

11
01

© 1987

Technical and Bibliographic Notes/Notes techniques et bibliographiques

The Institute has attempted to obtain the best original copy available for filming. Features of this copy which may be bibliographically unique, which may alter any of the images in the reproduction, or which may significantly change the usual method of filming, are checked below.

L'Institut a microfilmé le meilleur exemplaire qu'il lui a été possible de se procurer. Les détails de cet exemplaire qui sont peut-être uniques du point de vue bibliographique, qui peuvent modifier une image reproduite, ou qui peuvent exiger une modification dans la méthode normale de filmage sont indiqués ci-dessous.

- | | |
|--|--|
| <input type="checkbox"/> Coloured covers/
Couverture de couleur | <input checked="" type="checkbox"/> Coloured pages/
Pages de couleur |
| <input type="checkbox"/> Covers damaged/
Couverture endommagée | <input type="checkbox"/> Pages damaged/
Pages endommagées |
| <input type="checkbox"/> Covers restored and/or laminated/
Couverture restaurée et/ou pelliculée | <input type="checkbox"/> Pages restored and/or laminated/
Pages restaurées et/ou pelliculées |
| <input type="checkbox"/> Cover title missing/
Le titre de couverture manque | <input checked="" type="checkbox"/> Pages discoloured, stained or foxed/
Pages décolorées, tachetées ou piquées |
| <input type="checkbox"/> Coloured maps/
Cartes géographiques en couleur | <input type="checkbox"/> Pages detached/
Pages détachées |
| <input checked="" type="checkbox"/> Coloured ink (i.e. other than blue or black)/
Encre de couleur (i.e. autre que bleue ou noire) | <input type="checkbox"/> Showthrough/
Transparence |
| <input type="checkbox"/> Coloured plates and/or illustrations/
Planches et/ou illustrations en couleur | <input checked="" type="checkbox"/> Quality of print varies/
Qualité inégale de l'impression |
| <input type="checkbox"/> Bound with other material/
Relié avec d'autres documents | <input type="checkbox"/> Includes supplementary material/
Comprend du matériel supplémentaire |
| <input type="checkbox"/> Tight binding may cause shadows or distortion
along interior margin/
La reliure serrée peut causer de l'ombre ou de la
distorsion le long de la marge intérieure | <input type="checkbox"/> Only edition available/
Seule édition disponible |
| <input type="checkbox"/> Blank leaves added during restoration may
appear within the text. Whenever possible, these
have been omitted from filming/
Il se peut que certaines pages blanches ajoutées
lors d'une restauration apparaissent dans le texte,
mais, lorsque cela était possible, ces pages n'ont
pas été filmées. | <input type="checkbox"/> Pages wholly or partially obscured by errata
slips, tissues, etc., have been refilmed to
ensure the best possible image/
Les pages totalement ou partiellement
obscurcies par un feuillet d'errata, une pelure,
etc., ont été filmées à nouveau de façon à
obtenir la meilleure image possible. |
| <input type="checkbox"/> Additional comments:/
Commentaires supplémentaires:
[Printed ephemera] 1 sheet, [2] p. | |

This item is filmed at the reduction ratio checked below/
Ce document est filmé au taux de réduction indiqué ci-dessous.

10X	12X	14X	16X	18X	20X	22X	24X	26X	28X	30X	32X
					✓						

The copy filmed here has been reproduced thanks to the generosity of:

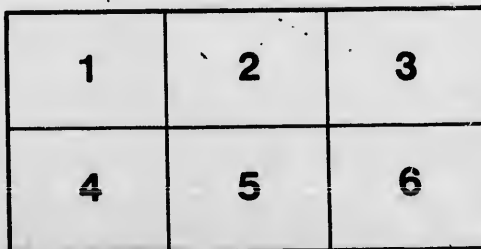
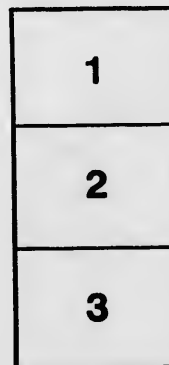
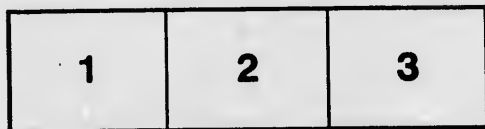
Metropolitan Toronto Library
Canadian History Department

The images appearing here are the best quality possible considering the condition and legibility of the original copy and in keeping with the filming contract specifications.

Original copies in printed paper covers are filmed beginning with the front cover and ending on the last page with a printed or illustrated impression, or the back cover when appropriate. All other original copies are filmed beginning on the first page with a printed or illustrated impression, and ending on the last page with a printed or illustrated impression.

The last recorded frame on each microfiche shall contain the symbol \rightarrow (meaning "CONTINUED"), or the symbol ∇ (meaning "END"), whichever applies.

Maps, plates, charts, etc., may be filmed at different reduction ratios. Those too large to be entirely included in one exposure are filmed beginning in the upper left hand corner, left to right and top to bottom, as many frames as required. The following diagrams illustrate the method:



L'exemplaire filmé fut reproduit grâce à la générosité de:

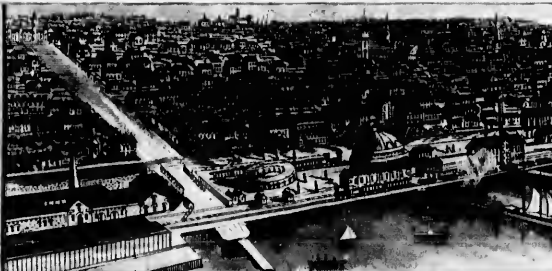
Metropolitan Toronto Library
Canadian History Department

Les images suivantes ont été reproduites avec le plus grand soin, compte tenu de la condition et de la netteté de l'exemplaire filmé, et en conformité avec les conditions du contrat de filmage.

Les exemplaires originaux dont la couverture en papier est imprimée sont filmés en commençant par le premier plat et en terminant soit par la dernière page qui comporte une empreinte d'impression ou d'illustration, soit par le second plat, selon le cas. Tous les autres exemplaires originaux sont filmés en commençant par la première page qui comporte une empreinte d'impression ou d'illustration et en terminent par la dernière page qui comporte une telle empreinte.

Un des symboles suivants apparaît sur la dernière image de chaque microfiche, selon le cas: le symbole \rightarrow signifie "A SUIVRE", le symbole ∇ signifie "FIN".

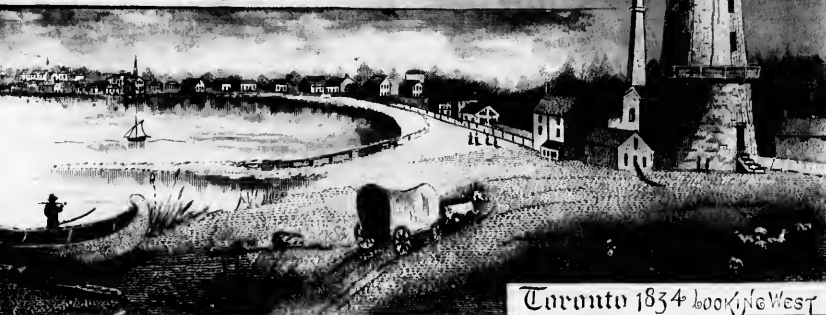
Les cartes, planches, tableaux, etc., peuvent être filmés à des taux de réduction différents. Lorsque le document est trop grand pour être reproduit en un seul cliché, il est filmé à partir de l'angle supérieur gauche, de gauche à droite, et de haut en bas, en prenant le nombre d'images nécessaire. Les diagrammes suivants illustrent la méthode.



Alexander, Clare & Cable Toronto.



SEMI-CENTENNIAL
CELEBRATION
TORONTO, JUNE 16th to 21st



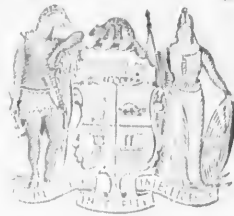
1834

1884

SEMI-CENTENNIAL OF TORONTO

June 16th to

June 21st



WELCOME TO OUR CITY'S GUESTS

ARTHUR R. BOSWELL, - MAYOR

CITY'S SEMI-CENTENNIAL EXECUTIVE

W. B. MURRIOR,

S. P. BARMAN,

R. B. HAMILTON,

JAMES ROSE,

PROGRAMME

MONDAY, JUNE 16th "Municipal and Historical Day."

Special commemorative of the City's municipal organization and progress. Parade to comprise: Municipal Bodies, Police, Fire-brands, etc.; Work Pioneers, with superb tableaux, accompanying parade, etc.

IN THE AFTERNOON—Parade and Reception and Drill, and reception to visiting Brigades. Grand Historical Oratorio, at the Industrial Exhibition Grounds.

IN THE EVENING—Fireworks, Tower Light Procession.

TUESDAY, JUNE 17th "Trades and Industrial Day."

Special commemorative of the City's past progress and present condition of the Commercial Interests of the City. Parade to comprise: (1) Members of all the Labor Organizations in the City, each with a Laborer in uniform; (2) Representatives, with illustrative Tableaux, from R.R. Way, Telegraph, Express and Manufacturing Companies, Board of Trade, Corn Exchange, etc., etc.; and (3) various other firms with goods dealt in, artistically arranged, from each firm showing business in the City.

IN THE AFTERNOON—Band Competition.

IN THE EVENING—Commemorative Dinner to Distinguished Visitors. Grand Oratorio by the Phœnix and Grand Societies. General Illumination of the City.

WEDNESDAY, JUNE 18th "Military Day."

Parade to comprise: "The Volunteers of the 'Thirties,'" Visiting Corps from other Cities, the various City Corps. Grand Street Parade and Review.

IN THE EVENING—Display of Fireworks. Grand Commemorative Ball in the Pavilion, with Quadrille Sets in Costume, illustrative of fifty years ago, and dances then in vogue.

THURSDAY, JUNE 19th

Grand commemorative of the settlement of the U. E. Loyalists in Canada, 100 years ago, which will be participated in by their descendants from all parts of the Province. Regatta on the Bay.

IN THE EVENING—A grand Parade will take place in the Harbor. All the steamers, tugs, and row boats—hundreds in number will form in line and move around the Bay; they will be illuminated by Chinese lanterns, etc., and from the decks of the larger craft magnificent fireworks will be displayed, while all along the line a continuous shower of rockets and Roman candles will be discharged.

FRIDAY, JUNE 20th "The Benevolent Societies' Day."

The Parade to comprise: Uniformed and un-uniformed Lodges of Masons, Odd Fellows, Knights of Pythias, Knights of Malta, Foresters; National Societies, Orange Societies, Emerald and Irish Catholic Benevolent Societies, etc., etc.

IN THE AFTERNOON—Parade and Drill of the Uniformed Encampments, when prizes will be given for best drill. Unveiling of the Monument on site of the ancient Fort Rouille, at the Exhibition Grounds.

IN THE EVENING—Grand Oratorio and Concert by the combined Societies. General illumination.

SATURDAY, JUNE 21st

To be specially commemorative of our Educational Institutions. Parade to comprise: Officers of Educational Department, and Tableaux illustrative of progress made; Representatives from our Universities, Colleges, Schools, and Charitable Institutions.

IN THE AFTERNOON—A grand Lacrosse Match will take place, and Foot and Bicycle Races be held, in which it is expected the leading athletes of America will compete.

IN THE EVENING—Final grand Illumination of the City, and display of Fireworks.

