

**CIHM  
Microfiche  
Series  
(Monographs)**

**ICMH  
Collection de  
microfiches  
(monographies)**



**Canadian Institute for Historical Microreproductions / Institut canadien de microreproductions historiques**

**© 1995**

## Technical and Bibliographic Notes / Notes technique et bibliographiques

The Institute has attempted to obtain the best original copy available for filming. Features of this copy which may be bibliographically unique, which may alter any of the images in the reproduction, or which may significantly change the usual method of filming are checked below.

- Coloured covers / Couverture de couleur
- Covers damaged / Couverture endommagée
- Covers restored and/or laminated / Couverture restaurée et/ou pelliculée
- Cover title missing / Le titre de couverture manque
- Coloured maps / Cartes géographiques en couleur
- Coloured ink (i.e. other than blue or black) / Encre de couleur (i.e. autre que bleue ou noire)
- Coloured plates and/or illustrations / Planches et/ou illustrations en couleur
- Bound with other material / Relié avec d'autres documents
- Only edition available / Seule édition disponible
- Tight binding may cause shadows or distortion along interior margin / Le reliure serrée peut causer de l'ombre ou de la distorsion le long de la marge intérieure.
- Blank leaves added during restorations may appear within the text. Whenever possible, these have been omitted from filming / Il se peut que certaines pages blanches ajoutées lors d'une restauration apparaissent dans le texte, mais, lorsque cela était possible, ces pages n'ont pas été filmées.
- Additional comments / Commentaires supplémentaires:

L'Institut a microfilmé le meilleur exemplaire qu'il lui a été possible de se procurer. Les détails de cet exemplaire qui sont peut-être uniques du point de vue bibliographique, qui peuvent modifier une image reproduite, ou qui peuvent exiger une modification dans la méthode normale de filmage sont indiqués ci-dessous.

- Coloured pages / Pages de couleur
- Pages damaged / Pages endommagées
- Pages restored and/or laminated / Pages restaurées et/ou pelliculées
- Pages discoloured, stained or foxed / Pages décolorées, tachetées ou piquées
- Pages detached / Pages détachées
- Showthrough / Transparence
- Quality of print varies / Qualité inégale de l'impression
- Includes supplementary material / Comprend du matériel supplémentaire
- Pages wholly or partially obscured by errata slips, tabs, etc., have been refilmed to ensure the best possible image / Les pages totalement ou partiellement obscurcies par un feuillet d'errata, une pelure, etc., ont été filmées à nouveau de façon à obtenir le meilleur image possible.
- Opposing pages with varying colouration or discolorations are filmed twice to ensure the best possible image / Les pages opposées ayant des colorations variables ou des décolorations sont filmées deux fois afin d'obtenir la meilleure image possible.

This item is filmed at the reduction ratio checked below /  
Ce document est filmé au taux de réduction indiqué ci-dessous.

	10X		14X		18X		22X		26X		30X
	12X		16X		20X		24X		28X		32X

The copy filmed here has been reproduced thanks to the generosity of:

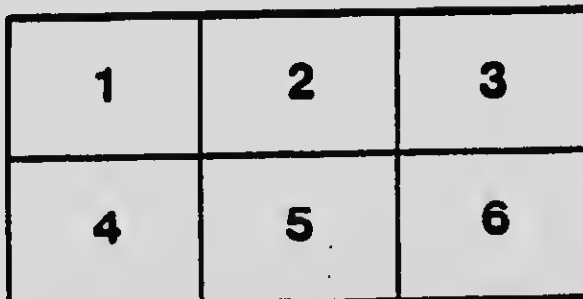
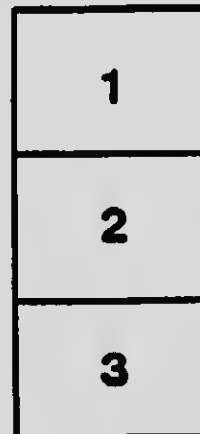
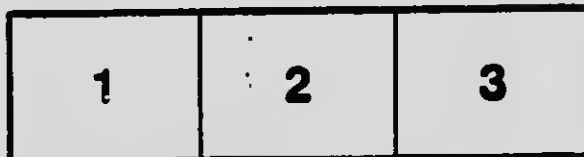
National Library of Canada

The images appearing here are the best quality possible considering the condition and legibility of the original copy and in keeping with the filming contract specifications.

Original copies in printed paper covers are filmed beginning with the front cover and ending on the last page with a printed or illustrated impression, or the back cover when appropriate. All other original copies are filmed beginning on the first page with a printed or illustrated impression, and ending on the last page with a printed or illustrated impression.

The last recorded frame on each microfiche sheet contains the symbol  $\rightarrow$  meaning "CONTINUED", or the symbol  $\nabla$  (meaning "END"), whichever applies.

Maps, plates, charts, etc., may be filmed at different reduction ratios. Those too large to be entirely included in one exposure are filmed beginning in the upper left hand corner, left to right and top to bottom, as many frames as required. The following diagrams illustrate the method:



L'exemplaire filmé fut reproduit grâce à la générosité de:

Bibliothèque nationale du Canada

Les images suivantes ont été reproduites avec le plus grand soin, compte tenu de la condition et de la netteté de l'exemplaire filmé, et en conformité avec les conditions du contrat de filmage.

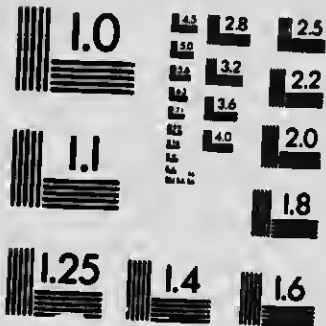
Les exemplaires originaux dont la couverture en papier est imprimée sont filmés en commençant par le premier plat et en terminant soit par la dernière page qui comporte une empreinte d'impression ou d'illustration, soit par le second plat, selon le cas. Tous les autres exemplaires originaux sont filmés en commençant par la première page qui comporte une empreinte d'impression ou d'illustration et en terminant par la dernière page qui comporte une telle empreinte.

Un des symboles suivants apparaît sur la dernière image de chaque microfiche, selon le cas: le symbole  $\rightarrow$  signifie "A SUIVRE", le symbole  $\nabla$  signifie "FIN".

Les cartes, planches, tableaux, etc., peuvent être filmés à des taux de réduction différents. Lorsque le document est trop grand pour être reproduit en un seul cliché, il est filmé à partir de l'angle supérieur gauche, de gauche à droite, et de haut en bas, en prenant le nombre d'images nécessaire. Les diagrammes suivants illustrent la méthode.

# MICROCOPY RESOLUTION TEST CHART

(ANSI and ISO TEST CHART No. 2)



**APPLIED IMAGE Inc**

1853 East Main Street  
Rochester, New York 14609 USA  
(716) 482-0300 - Phone  
(716) 286-5989 - Fax

Mr. P. Taylor

THE HISTORY  
OF THE VIEWS  
AND  
OF THE BANK

# Canadian Scenic Views and Guide Book

Published and Copyrighted by

The  
**Canada Agency Co.**  
LIMITED

LONDON

TORONTO

WINNIPEG

MONTREAL



Head Office:  
**LONDON - CANADA**

## CONTENTS

CANADA IN BRIEF

Guide to  
Canadian Towns and Cities

Canadian Game Laws  
" " Postal Laws

Right Use of Canadian Air

How to  
Read the Weather

Selected  
Canadian Views

## CONTENTS

Guide to  
Canadian Hotels  
Summer Resorts  
Business Firms  
etc.

### NOTICE

The use of outside of back cover as an advertisement is strictly prohibited unless the amount charged for that purpose has been paid and permission granted by the Head Office of the Company.

Rates for business announcements furnished by Head Office.

**PRICE:** 25c. Single Copy  
\$2.25 Per Dozen

**SOLD BY RETAIL DEALERS AND BY THE COMPANY'S AGENTS**

Entered according to Act of Parliament in 1906 by the Canada Agency Company, Limited, in the Office of A. Culture

FC 22  
C 236  
111  
1444

## Canada in Brief



CANADA, from the Iroquois *Kanada* cahn, is rather a misnomer for a country of such vastness, covering more than half the continent of North America, and reaching from the latitude of Southern Europe to the North Pole, having a circuitous coast line upon the Atlantic of 10,000 miles, and upon the Pacific, with its deep inlets, many islands and secure harbors of almost as great length, extending upwards of 3,000 miles from east to west, and 1,600 miles from north to south, and comprising an area of 3,745,574 square miles, exceeding that of the United States (including Alaska, Hawaii and the Philippine Islands) by 5,640 square miles; a country nearly equal to the whole of Europe and embracing one-third of the British Empire. A country concerning the farm lands of which, in its Western Provinces alone, it has been suggested that if it were possible to convert their area into a strip of a mile in width, and a railroad constructed thereon, it would take a train travelling night and day without stop, at a speed of 40 miles per hour, a period of four years to complete the journey from terminus to terminus. Its first reputed discovery antedates Columbus by several hundred years, the Norseman Bjarni Herjulfson sighting its coasts in 986 followed by Lief Ericson in 1000; but John Cabot in 1497, and Jacques Cartier in 1534, were the first effectual explorers. Though abundantly able to sustain a population of 100,000,000, the present inhabitants number but 6,000,000, which are, however, being rapidly augmented by emigration from Europe and the Western States. Ontario numbers 2,250,000, Quebec 1,750,000, the Maritime Provinces 1,000,000, and the Western Provinces 1,000,000.

The poetic name of "Our Lady of the Snows" is likewise manifestly erroneous for a land which lies largely in the Temperate Zone, and possesses a climate ranging from the clear, dry, bracing winters and summer heat of the St. Lawrence Valley, to the delightful evenness of the Pacific Coast. A country of diversified Flora and Fauna, abounding in many valuable fur-bearing animals, embracing the greatest forest region of the world, yielding untold millions of feet of the finest lumber annually; a land of vast mineral resources, possessing the Gold of the Klondike and the Silver of Cobalt, the immense Coal fields of Nova Scotia, British Columbia and the newer Western Provinces; almost the monopoly of Asbestos, great quantities of Nickel, Iron, Lead, Petroleum and Salt, as well as Gypsum, Graphite, Pyrites, Mica, Lime and Marl; possessing fisheries yielding many millions of dollars annually, and millions upon millions of acres of highly cultivated farm lands, producing fruit and grains famous the world over, and giving sustenance to stock having enviable reputation for the purity of its breeds; and yet millions upon millions of other acres, the virgin soil of which is year by year being broken to swell the production of mountains of golden grain; manufactories of bewildering variety, the products of which find their way to the inmost parts of the globe; natural water power of inestimable value, of which the Niagara and Ottawa are but examples; unequalled transportation facilities afforded by great natural waterways, supplemented by complete canal systems and gigantic transcontinental railroads; an ever-expanding commerce; an elastic and stable banking system; high moral and commercial standards; splendid facilities for public school and higher education, the former of which is compulsory; equitable laws, impartially administered, and private rights safeguarded; the quiet, peaceful possession of all this vast heritage of immeasurable wealth guaranteed beneath the spreading folds of the Union Jack! The contemplation causes the blood to pulsate more rapidly through our veins, while we feel commendable satisfaction with our happy lot, and the gratefulness to the Beneficent Providence which has permitted us, either by birth or adoption, to claim a share in the future of this great land and all that is implied in the name "Canadian."—*Capt. J. W. Fuller, London, Canada.*

## Canadian Scenic Views and Guide Book

### Principal Towns and Cities in Canada

ALB.

#### Alberta

Place	Railway	Pop.
Calgary	1	15,000
Cardston		1,000
Edmonton	1	1,000
Fort Saskatchewan	4	1,000
Lethbridge	4	2,500
Lacombe	4	1,100
Leduc	4	400
MacLeod	4	1,200
Pincher Creek	4	600
Prosser	4	500
Red Deer	4	1,500
Strathmore	4	1,500
Stollery		700
Wetaskiwin	4	2,700

#### British Columbia

Place	Railway	County	Pop.
Alberni	18	Cowichan	1,000
Ashcroft	4	Yale	1,000
Chilliwack	4	New Westminster	2,000
Cranbrook	4	E. Kootenay	3,500
Chomanium, Esq. & Nan		Alberni	1,000
Fernie	4	E. Kootenay	5,000
Fr. Steele	4	E. Kootenay	500
Grand Forks	4	Yale	3,000
Greenwood	4	Yale	200
Golden	4	E. Kootenay	1,500
Hastings	4	New Westminster	10,000
Kamloops	4	Yale	2,500
Kaslo	22	Kootenay	1,500
Ladner	4	Westminster	2,500
Ladysmith	E. & N. R.	Nanaimo	2,500
Lytton	4	Yale	500
Moyie	4	E. Kootenay	1,500
Michel	4	E. Kootenay	1,500
Nanaimo	E. & N. R.	Nanaimo	8,000
Nelson	4	W. Kootenay	6,000
New Westminster	4	N. W. Dis.	8,000
New Denver	4	W. Kootenay	1,000
Phoenix	4	Yale	2,500
Revelstoke	4	W. Kootenay	2,500
Rosland	4	Kootenay	6,000
Sandon	4	Kootenay	1,000
Sibean City	4	Kootenay	1,000
Steveston	4	New Westminster	1,000
Trail	4	Kootenay	1,500
Vancouver	4	N. Westminster	45,000
Victoria	4	on Vancouver Is.	30,000
Vernon	4	Yale	1,500
Wellington, Esq. & Nan		Nanaimo	500

#### Prince Edward Island

Place	Railway	County	Pop.
Charlottetown	42	Queens	15,000
Georgetown	42	Kings	1,200
Souris	42	Kings	1,200
Summerside	42	Prince	3,000

#### Manitoba

Place	Railway	County	Pop.
Birtle	4	Marquette	500
Brandon	4	Selkirk	10,000
Boissevain	4	Souris	1,000
Carberry	4	Marquand	1,200
Carman	4	Selkirk	1,500
Crystal City	4	Lisagar	300
Dauphin	20	Marquette	1,800
Deloraine	4	Souris	1,000
Emerson	4	Proulxhor	500
Elkhorn	4	Brandon	500
Grand View	20	Marquette	1,500
Gretna	10	Lisagar	1,000
Gladsstone	4	Pt. La. Prairie	1,000
Glenboro	4	Pt. La. Prairie	600
Hartney	4	Souris	700
Holland	4	Marquand	600
Humboldt	4	Marquette	700
Morden	4	Selkirk	1,800
Munich	4	Souris	2,000
Neepawa	4	Marquand	700
Pt. La. Prairie	4	Pt. La. Prairie	1,000
Pilot Mound	4	Lisagar	700
Plum Coulee	4	Lisagar	1,000
Russel	4	Marquette	600
Rapid City	4	Marquette	800
St. Boniface	4	Selkirk	4,000
Selkirk	4	Selkirk	2,500
Souris	4	Brandon	1,000
Stonewall	4	Selkirk	700
Stn. des Chats	20	Marquette	600
Steinbach	20	Proulxhor	600
Stony Mountain	20	Selkirk	600
Treburke	4	Marquand	600
Warden	4	Brandon	1,700
Winnipeg	4	Selkirk	110,000
Winkler	4	Lisagar	700
Winnipegosis	20	Dauph	700
Wawanesa	20	Pt. La. Prairie	600

#### New Brunswick

Place	Railway	County	Pop.
Bathurst	16	Victoria	1,500
Campbellton	16	Restigouche	2,000
Chatham	Can. E.	Northumberland	350
Dorchester	16	Alberni	1,500
Fairville	4	St. J. W.	2,500
Federickton	4	St. J. W.	8,500
Fredericton	4	St. J. W.	6,000
Milltown	C. E. A.	St. J. W.	1,500
Munich	16	West	1,500
Newcastle	16	North	1,500
Quaco	H. & N. M.	St. J. W.	1,500
Richibucto	K. N.	Ken.	2,000
Rogersville	16	Ken.	1,500
St. John's	16	Westmor.	2,000
Shediac	16	Westmor.	4,200
St. Andrews	4	Charlottet.	1,800
St. John	16	St. John	2,000
St. Stephen	4	Charlottet.	2,000
Sunxw	16	Kings	1,500
Waterford	4	Kings	1,500
Woodstock	4	Carlton	1,500

#### Nova Scotia

Place	Railway	County	Pop.
Amherst	16	Cumberland	2,000
Antigonish	Dom. Atl.	Antigonish	1,500
Antigonish	16	Antigonish	1,500
Brantford	40	Cape Breton	1,800
Bridgeville	N. S. Central	Lunenburg	2,000
Canso		Antigonish	2,000
Dagby	Dom. Atl.	Dagby	1,200
Donnan	40	Cape Breton	2,000
Drummond	Mines H. & V.	Paton	1,200
Glace Bay	16	Halifax	1,500
Halifax	40	Cape Breton	8,000
Halifax	16	Halifax	1,800
Kentville	Dom. Atl.	Kings	5,000
Lisapond	L. & M.	Queens	2,000
Louisburg	40	Cape Breton	1,200
Lunenburg	N. S. C.	Lunenburg	3,000
New Glasgow	16	Pictou	5,000
North Sydney	16	Cape Breton	7,000
Millville D. A. & N. S. C.	Antigonish	1,200	
Orford	16	Cumberland	1,800
Parsons	Cumberland	Cumberland	1,800
Pictou	16	Pictou	3,500
Port Hood L. C. & C.	Antigonish	1,800	
Sherburne	Cumberland	Sherburne	1,800
Springhill	Cumberland	Cumberland	1,800
Stellarton	16	Pictou	1,500
St. John's	16	Cape Breton	1,500
Tatamouche	16	Cochester	1,000
Westville	H. & Y.	Pictou	4,000
Windsor	Dom. Atl.	Hants	4,000
Wolfville	Dom. Atl.	Kings	1,600
Yarmouth	Dom. Atl.	Yarmouth	7,000

#### Ontario

Place	Railway	County	Pop.	
Acton	2	Huron	1,500	
Alexandra	2	Glengarry	2,000	
Albion	2	Simcoe	1,200	
Aldershot	2	Simcoe	1,000	
Amherst	4	Leamington	3,500	
Antigonish	6	Essex	2,500	
Arnprior	2, 4	Renfrew	4,500	
Arthur	4	Wellington	1,600	
Aurora	2	York	2,700	
Asper	2	Elgin	2,200	
Barnes	2	Simcoe	6,000	
Billerie	2	Hastings	1,200	
Berlin	2	Waterloo	1,200	
Blenheim	12	Kent	1,500	
Bowmanville	2	Durham	3,500	
Braintree	2	Muskoka	2,500	
Brampton	2, 4	Peel	4	
Brampton	2, 14	Brant	20,000	
Bridgeburg	2, 6, 8	Welland	1,100	
Brighton	2	Northumberland	1,800	
Brookville	H. W. N.	2, 4	Leeds	9,000
Bussell	2	Huron	1,500	
Cambridge	2	Huron	1,500	
Cambridge	2	Northumberland	2,500	
Carleton Place	2	Ontario	1,200	
Carden	2	Greenville	1,400	

#### Ontario Continued

Place	Railway	County	Pop.
Caledon	4	Ontario	5,000
Chatham	4, 2	Kent	11,000
Chesley	2	Huron	1,500
Clinton	2	Huron	1,500
Cobourg	2	Northumberland	3,000
Collingwood	2	Northumberland	1,200
Collingwood	2	Simcoe	2,500
Copper Cliff	1	Simcoe	2,500
Cornwall	2, 10	Simcoe	2,500
Dawson	H. & Q.	Hastings	9,000
Dresden	11, R, R	Kent	2,000
Dundas	2	Westmor.	1,000
Hamilton	2	Hamilton	7,000
Hamilton	2	Hamilton	7,000
Hamilton	2, 4	Hamilton	7,000
Elmira	2, 4	Waterloo	1,100
Elmira	4, 2	Wellington	1,800
Essex	4, 2	Essex	1,800
Essex	2	Huron	3,000
Fenchon Falls	2	Victoria	1,500
Fergus	2, 4	Wellington	1,600
Forest	2	Leamington	1,000
Fort William	4	Thunder Bay	7,000
Galt	4, 2	Waterloo	9,000
Ganungue	2	Thousand L. Leeds	3,000
Gawarawa	2	Huron	1,600
Goderich	2	Middlesex	1,500
Goderich	2	Huron	4,200
Goderich	2	Simcoe	1,500
Guarhurst	2	Wellington	1,500
Guarhurst	2	Wellington	1,500
Hagersville	2	Wellington	1,200
Hamilton	2	Hamilton	6,500
Hamilton	2	Grey	1,500
Hartsville	4, 2	Wellington	1,800
Hawkesbury	2, G. N.	Prescott	1,500
Hesslev	2	Waterloo	2,500
Huntsville	2	Carleton	2,800
Huntsville	2	Muskoka	2,500
Ingersoll	2, 4	Oxford	4,500
Ingersoll	2	Simcoe	1,500
Kemptville	2	Brant	1,500
Kincardine	2	Bruce	3,000
Kinston	2	Frontenac	2,000
Kingsville	12	Essex	1,600
Lakefield	2	Peterborough	1,400
Leamington	6, 12	Essex	2,500
London	4, 2	Victoria	7,500
Listowel	2	Perth	2,700

Continued

#### KEY TO RAILROADS

G. T. R.	2	Slovan & Kala	22
C. P. R.	4	Quebec Central	24
M. C. R.	6	Can. Vermont	26
Welland	8	Que. & L. St. John	28
New York	10	N. Y. & H.	30
P. M. R.	12	Great Northern	32
T. H. & B.	14	Tamaraing	34
Intercolonial	16	Que. South	36
Nanaimo-Alberni	18	Ad. & Super.	38
Can. Nor.	20	Syd. & Louis	40



## Canadian Scenic Views and Guide Book

### Principal Towns and Cities in Canada

Ontario—Continued			
Place	Railway	County	Pop.
London	1, 4, 12	Middlesex	45000
Lucknow	2	Bruce	1800
Madoc	2	Hastings	1400
Mattawa	4	Nipissing	1600
Meaford	2	Grey	2204
Merrickville	4	Greenville	1029
Merrison	2	Lincoln	1850
Middleton	2	Simcoe	3200
Midway	2	Bruce	1050
Milbank	2	Perth	2200
Milton	4, 2	Haldon	1500
Mitchell	2	Perth	2300
Mt. Pleasant	2	Dundas	3000
Muskrat Falls	4, 2	Wellington	2800
Napanee	2	Lennox	3700
New Edinburgh	2	Prescott	2300
New Hamburg	1	Waterloo	1200
Newmarket	2	York	2200
Niagara Falls	2	Welland	4250
Niagara Falls N.	2	Welland	1500
Niagara on the Lake	2	Welland	1300
North Bay	4, 2	Nipissing	2600
North Downcourt	2	York	1050
Norway	2	Ontario	1165
Norwich	2	Oxford	2000
Oakville	2	Haldon	1900
Oil Springs	4	Lambton	1100
Orangeville	4	Dufferin	4000
Orillia	2	Simcoe	5000
Oshawa	2	Ontario	4500
Ottawa	1	Carleton	70000
Owen Sound	2	Grey	11000
Paisley	2	Bruce	1500
Palmerston	2	Wellington	2000
Paris	2	Brant	3500
Parkhill	2	Middlesex	1800
Parry Sound C. A. & J. B.	2	Parry Sound	2900
Pembroke	2, 4	Renfrew	5500
Penetanguishene	2	Simcoe	2500
Perth	4	Lanark	4300
Peterborough	2	Peterborough	15000
Petrolia	2	Lambton	4400
Pictou C. O. R.	2	Prince Edward	4000
Port Arthur	4	Thunder Bay	6000
Port Colborne	2	Welland	1300
Port Dalhousie	2	York	1200
Port Dover	2	Norfolk	1200
Port Elgin	2	Bruce	1800
Port Hope	2	Durham	3000
Port Perry	2	Ontario	1800
Portsmouth	2	Ontario	1827
Prescott	4	Greenville	3100
Preston	2	Waterloo	2400
Rat Portage	4	Rainy River	5200
Renfrew	2, 4	Renfrew	3505
Ridgeway	6	Kenil	2300
Rockland	2	Prescott	2000
Sandwich	2	Eseee	1500
Sault Ste. Marie	4	Algoma	7500
Seabrook	2	Huron	2700
Shelburne	4	Grey	1400

### Ontario—Continued

Place	Railway	County	Pop.
Simcoe	2	Norfolk	2000
Smith's Falls	4	Lorain	5200
Southampton	2	Bruce	1300
St. Catharines	2	Lincoln	11000
St. Marye	2	Perth	3500
St. Thomas	2	Elgin	13000
Sturgeonville	2	Simcoe	1900
Stratford	2	York	1200
Stratford	2	Perth	15000
Stratford	2	Middlesex	3500
Sturgeon Falls	4	Nipissing	1900
Sudbury	4	Nipissing	3000
Thornhill	4	Algoma	1400
Thorold	2	Welland	2500
Tilbury	6	Kent	1100
Tillsonburg	2	Norfolk	2500
Toronto	20, 2, 4	York	26000
Toronto Jct.	2, 4	York	6000
Trenton C. O.	2	Northumberland	5000
Tweed	2	Hastings	1200
Uxbridge	2	Ontario	2200
Vankleek Hill	4	Prescott	2000
Walkerton	2	Bruce	3200
Walkerville	2	Eseee	1600
Walkersburg	12	Kent	3000
Waterford	6, 14	North York	1200
Waterloo	2	Waterloo	3500
Watford	2	Lambton	1600
Welland	2	Welland	2100
Weston	2	York	1300
Whitby	2	Ontario	3100
Windsor	2	Bruce	2400
Winchester	4	Dundas	1100
Windsor	2	Essex	12000
Wingham	4, 2	Huron	2400
Woodstock	4, 2	Oxford	10000

### Quebec

Place	Railway	County	Pop.
Actonville	2	Bagot	2000
Ancienne Lorette	2	Levis	1200
Ardenbasca	2	Lotbiniere	1700
Aylmer	4	Ottawa	2500
Beauharnois	2	Chateauguay	2000
Beauport	4	Levis	1400
Belford	4	Miseisqui	1400
Berthier	4	Berthier	3800
Bic	16	Rimouski	2000
Black Lake	24	24	1300
Buckingham	4	Buckingham	3000
Cap-a-Breton	4	Gaspé	1300
Cape St. Ignace	16	L'Islet	1200
Caughnawaga	4	Chateauguay	1200
Cedar Hill	16	Rimouski	1300
Chicoutimi	28	Chicoutimi	4000
Coaticook	2	Stanstead	3500
Cote des Neiges	2	Chateauguay	1200
Cote St. Paul	2	Laprairie	1500
Danville	2	Portneuf	1200
Deshallons	2	Richmond	1300
D'Isern	24	Wilfrid	1100
Drummondville	7, E, 4, 16	Drummond	2100

### Quebec—Continued

Place	Railway	County	Pop.
De Lorimier	2	Malouneuve	1300
Parham Centre	4	Missisquoi	3500
Fox River	2	Gaspé	1500
Fraserville	2	Terrebonne	5000
Gatineau	4	Weight	1600
Granby	36	Shefford	4000
Grand Mere	22	Champlain	3000
Hastingsdon	2	Beauharais	1400
Hull	4	St. Regis	14000
Iberville	4	Iberville	2000
Joliette	4	Joliette	5000
Kingville	2	Megantic	3500
Lachena	2	Chateauguay	5600
Lacomb	2, 32	Two Mts.	2300
L'Assomption	2	Beauce	1800
L'Assomption C. & Ver.	2	Levis	3500
Levis	2, 16	Levis	7800
Longueuil	36	Richelieu	3000
Lorette	2	Levis	2400
Louiseville	4	Yamaska	2900
Lake Megantic	24	Megantic	2000
Laprairie	2	Laprairie	2200
Mandeville	4	Rimouski	1400
Magog	4	Brome	3600
Malouneuve	2	Montreal	4000
Mauricie	26	Beauce	1500
Machinongua	4	Labelle	2000
Matana	2	Rimouski	1200
Megantic	2, 4	Beauce	2100
Montreal	4	L'Assomption	13000
Montmagny	16	Montmagny	2000
Montreal	2, 4	Montreal	70000
Nicolet	38	Nicolet	2300
Notre Dame De Grace	2	Montreal	2500
Pierreville	2	Yamaska	1200
Plessisville	2	Megantic	1600
Pointe Gatineau	2	Wright	1600
Port Elchemin	2	Levis	1000
Quebec	4, 36	Quebec	70000
Richmond	2	Drummond	2500
Riviere du Loup	16, 34	Terrebonne	5000
Roberval	28	St. John	1300
Sikawinigan Falls	32	St. Maurice	3000
Sherbrooke	4	Sherbrooke	12000
Somersnet	2	Lotbiniere	1600
Sorel	24	Richelieu	8000
St. Agathe	4	Terrebonne	3000
St. Ambroise	4	Quebec	1600
St. Anne de Bellevue	4	Chateauguay	1400
St. Athanase	2	Iberville	1600
St. Cecilia	2	Rimouski	1300
St. Charles Jc.	16	Bellechasse	1000
St. Colomb de Sillery	2	Quebec	1900
St. Cuthbert	2	Montreal	11000
St. Desire du Lac Noir	2	Megantic	1300
St. Eustache	4	Two Mts.	1700
St. Henri de Levis	4	Levis	1000
St. Gabriel	4	Berthier	2400
St. Jean Baptiste	2, 24	Bagot	9500
St. Jean des Chailhons	2	Portneuf	1300
St. Jerome	4, 32	Terrebonne	5000
St. Jerome Matana	4, 26	Rimouski	1200
St. Johns	2	St. Johns	4030

### Quebec—Continued

Place	Railway	County	Pop.
St. Joseph de Beauce	24	Beauce	1200
St. Joseph de Levis	2	Levis	3500
St. Laurent	2	Levis	1400
St. Louis	2	L'Assomption	11000
St. Octave	16	Rimouski	1200
St. Paul	2	Joliette	1900
St. Paul's Bay	2	Charlevoix	1300
St. Raymond	28	Portneuf	1300
St. Regis	2	Huntingdon	1200
St. Remy	2	Huntingdon	1200
St. Rose	4	Two Mts.	3000
St. Th. de Mainville	4	Terrebonne	3000
St. Via	2, 4	L'Assomption	6000
Terrebonne	4	Terrebonne	2000
Thetford Mines	24	Megantic	1000
Three Rivers	4	Champlain	12500
Trois Pistoles	16	Terrebonne	1200
Valleyfield	2, 30	Beauharais	13000
Verdun	2	Jacques Cartier	2000
Victoriaville	2	Arthabaska	1700
West Farnham	26	St. Johne	3500
Westmount	4	Montreal	9000
Windsor	4	Richmond	2200
Windsor Mills	4	Richmond	2200
Yamachiche	4	Maurice	3000

### Saskatchewan

Place	Railway	Pop.
Alamanda	4	800
Broadview	4	1000
Canaduff	4	500
Duck Lake	4	500
Esteron	4	700
Glen Ewen	4	600
Grenfell	4	1000
Indian Head	4	1200
Jacques	4	800
Maple Creek	4	800
Moose Jaw	4	7000
Myraman	4	1300
Oxbow	4	1000
Prince Albert	4	4000
Qu'Appelle	4	800
Regina	4	9000
Rosburn	4	1200
Saskatoon	4	1800
Wolsley	4	700
Yorkton	4	1200

### KEY TO RAILROADS

G. T. R.	- 2	Sloean & Kaino	22
C. P. R.	- 4	Que. Central	24
M. C. R.	- 6	Can. Vermont	26
Welland	- 8	Que. & L. St. John	28
New York	- 10	N. Y. & H.	30
P. M. R.	- 12	Great Northern	32
T. H. & B.	- 14	Tamcanian	34
Intercolonial	16	Que. South	36
Nassau-Albani	18	Ad. & Super.	38
Can. Nor.	- 20	Syd. & Louis	40



**ALEXANDRIA PARK (OWNED BY S. W. T. CO., LONDON, ONT.)** This charming breathing spot—much frequented by London and St. Thomas citizens—is situated about midway between the two cities, and is reached after a half-hour's delightful trip in comfortable, easy riding cars over the well-ballasted roadbed of the South-Western Traction Co.



**ALEXANDRIA PARK ENTRANCE**

On the line of The South-Western Traction Company.

**SUBWAY, S. W. T. CO.** The problem of crossing the Grand Trunk Railway System right-of-way by the line of The South-Western Traction Co., without danger or delay, is solved by means of this picturesque subway on the route between London and St. Thomas.



## CANADIAN GAME LAWS

The following general schedule of the close seasons for Game in the various provinces of the Dominion will be of interest to sportsmen and others. Attention is however called to the fact that almost every session of the Legislatures witnesses more or less changes in the existing regulations, so that the prospective hunter will do well to supplement this general information by calling upon the Game Warden of the locality wherein he proposes to operate for the latest published regulations each season. Licenses must also be obtained in most provinces for the privilege of taking many kinds of game, the fee for which is nominal to residents, but higher to non-residents.

## SCHEDULE OF CLOSE SEASONS.

Game	Ontario	Quebec	New Brunswick	Manitoba	British Columbia	New Provinces and Territories
Deer	15 Nov. to 1 Nov.	1 Jan. to 1 Sept.	30 Nov. to 15 Sept.	15 Dec. to 1 Dec.	15 Dec. to 1 Sept.	1 April to 15 July
Moose	" "	" "	" "	" "	1 Jan. to 1 Sept.	1 Oct. to 1 Dec.
Caribou	" "	1 Feb. to 1 Sept.	" "	" "	" "	" "
Elk or Wapiti	Perpetual	" "	" "	" "	" "	" "
Mountain Sheep and Goats	" "	" "	" "	" "	" "	" "
Grouse & Partridges	15 Dec. to 15 Sept.	1 Feb. to 1 Sept.	30 Nov. to 15 Sept.	1 Nov. to 1 Oct.	" "	1 Jan. to 1 Sept.
Woodcock, Black & Grey Squirrel	" "	" "	" "	" "	" "	" "
Quail	1 Dec. to 1 Nov.	" "	1 Dec. to 1 Sept.	1 Jan. to 1 Aug.	Perpetual	" "
Wild Turkey	" "	" "	" "	" "	" "	" "
Swans and Geese	1 May to 15 Sept.	" "	1 Dec. to 1 Sept.	" "	" "	15 July to 1 Sept.
Duck & Water Fowl	15 Dec. to 1 Sept.	1 Mar. to 1 Sept.	" "	1 Dec. to 1 Sept.	1 Mar. to 1 Sept.	" "
Snipe, Plover, etc.	15 Dec. to 15 Sept.	1 Feb. to 1 Sept.	" "	" "	" "	" "
Hares	31 Dec. to 1 Oct.	1 Feb. to 1 Dec.	" "	" "	1 July to 1 Sept.	" "
Pheasants	To 15 Sept. 1910	" "	" "	" "	" "	" "
Beaver	To 1 Nov. 1910	To 1 Nov. 1908	15 May to 1 Oct.	To 1 Aug. 1911.	15 May to 1 Oct.	" "
Otter	" "	" "	" "	1 April to 1 Nov.	" "	" "
Muskrota	1 May to 1 Jan.	1 May to 1 April	" "	" "	" "	" "
Raccoon	" "	1 April to 1 Nov.	" "	" "	" "	" "
Bear	" "	18 Aug. to 1 Feb.	" "	" "	" "	" "
Ptarmigan	" "	1 Feb. to 1 Nov.	" "	" "	" "	" "
Mink, Fisher, Sebale	" "	" "	31 Mar. to 15 Oct.	15 May to 1 Oct.	" "	15 Mar. to 1 Nov.
Buffalo or Bison	" "	" "	" "	" "	" "	To 1 July 1912
Musk Oxen	" "	" "	" "	" "	" "	30 Mar. to 15 Oct.

## FISHERY LAWS OF CANADA

Fish	Ontario	Quebec	New Brunswick	Manitoba	British Columbia	New Provinces and Territories
Cass	15 April to 15 June	15 Apr. to 15 June	" "	" "	" "	" "
Muskellunge	" "	25 May to 1 July	" "	15 April to 15 May	" "	15 April to 15 May
Pickarel	15 April to 15 May	15 Apr. to 15 May	" "	" "	" "	" "
Salmon	" "	18 Aug. to 1 Feb.	15 Aug. to 1 Feb.	" "	" "	" "
Speckled Trout	15 Sept. to 30 Apr.	1 Oct. to 30 Apr.	1 Oct. to 31 Mar.	15 Sept. to 1 May	15 Oct. to 15 Mar.	15 Sept. to 1 May
Salmon Trout	1 Nov. to 30 Nov.	" "	" "	5 Oct. to 15 Dec.	1 Oct. to 30 Nov.	5 Oct. to 15 Dec.
Sturgeon	" "	" "	1 Jan. to 1 July	15 May to 15 June	1 Jan. to 15 July	15 May to 15 June
Whitefish	1 Nov. to 30 Nov.	10 Nov. to 15 Dec.	1 Oct. to 31 Dec.	5 Oct. to 15 Dec.	1 Oct. to 30 Nov.	5 Oct. to 15 Dec.

## How to Read the Weather

THE term "Meteorology" was first applied by the great philosopher Aristotle to the study of atmospheric phenomena, a pursuit which he and other profound thinkers deemed to be well worthy of their attention; but though this branch of science has received a considerable share of attention from both learned and unlettered men in all ages, it is only in more recent years that the systematic and practical application of observations has become general through the meteorological bureaus which nearly all civilized countries now maintain. But while weather forecasts are daily bulletined throughout the length and breadth of this great Dominion, they are not always available at the desired moment, and the following hints as to how to read the weather for one's self will be found interesting.

To the well instructed eye the sky is an open book. That this was conceded by the Jews is evidenced by Christ's words, "When it is evening ye say, 'It will be fair weather, for the sky is red' and in the morning, 'It will be foul weather to-day, for the sky is red and lowering.'" To these time honored portents may be added: A gray sky in the morning betokens fine weather; a dawn high in the sky, wind, or low, fair weather; soft delicate looking clouds presage fine weather; hard oily-looking clouds or a dark gloomy blue sky spell wind; a bright blue sky, fine weather; the softer the clouds the less wind, the harder, more rolled and rugged, the higher wind. Inky clouds mean rain; light scudding clouds, wind, and if followed by heavy masses, rain; streaks and curls of clouds increasing indicate wind and rain; the higher and more distant the clouds the longer deferred but the more lasting the approaching change. Delicate indefinite clouds accompany fine weather, while hard massed clouds with glaring colors dictate rain and strong winds. Misty, hanging clouds descending presage wind and rain, or rising predict fine weather. Dew and fog foretell fine weather, while clear air and twinkling stars indicate coming wind and rain. When distant objects in the landscape take on a bluish tint, wat, stormy weather may be expected, while a grey brownish tint in the distance promises clearing weather.

As a general rule if there is a sudden rise in temperature we may look for a storm from the north, or if it falls suddenly a southerly storm is imminent.

## Canadian Scenic Views and Guide Book

### LONDON STREET RAILWAY

The most convenient and at once rapid, cheap and pleasant method by which to obtain a comprehensive and panoramic survey of the "Forest City" is afforded in a trip over the lines of the splendid up-to-date Elstetno Railway System by which every part of the community is efficiently served.

Starting from the centre of the city at the intersection of Dundee and Richmond Streets, to which point all lines converge, and proceeding on a Belt Line car south and west via Richmond, Horton and Ridout streets and across the river we enter London South, one of the principal residential sections, and for several miles progress along delightfully shaded streets lined with well kept lawns and attractive homes, large and small, and in flitting by the intersecting avenues catch vistas equally alluring. The Ontario Normal School and also several churches are passed en route, and as the circuit is completed the Power House of the Railway is passed and the return to Richmond street accomplished. Travelling north between imposing rows of substantial wholesales and other business houses, we pass the Grand Trunk Station, Tecumseh House, Bank of Toronto, City Hall, Bank of Commerce, Post Office, Custom House, St. Paul's (Episcopalian) and St. Peter's (Roman Catholic) cathedrals and other noteworthy structures.

Turning east on Central Avenue we skirt Victoria Park and pass many more handsome residences, and continuing south on Adelaide obtain a view of the Adelaide Street Baptist Church as we reach Dundee Street along which we travel westward, passing the Dundee Centre Methodist and Congregational Churches, the Convent of the Sacred Heart and the Armouries and finally reach Richmond Street at our starting point, some thirty-five minutes having been occupied in the run.



SPRINGBANK CAR

Now boarding a South Street Belt car we go east on Dundee Street and beyond Adelaide pass the flourishing retail business places of the East End. Passing south on Rectory, the Grand Trunk Car Works and Roundhouse, and other industrial establishments are noted. Neat residences are the accompaniment as we pass westward on the Hamilton Road and on South Street, where we obtain a good view of Victoria Hospital and returning to Richmond Street are soon at the corner of Dundas again. From here we go directly east on a Dundee car to the suburb of Pottersburg, passing Queen's Park with its Exhibition buildings and the Provincial Asylum for the Insane with its beautiful grounds surrounding. Returning the length of Dundee Street we cross Richmond and continuing westward past the Court House and over the river by means of another bridge traverse the thriving section of West London. Making the return trip to the corner of Richmond and Dundas, we proceed on a Wellington St. car to the southern portion of the city proper, crossing the river by a third bridge. On the return journey we go northward on Richmond to St. James Street, by which we cross to Wellington in the neighborhood of Huron College, and continue north to Mount Hope coming within view of the Hellmuth College buildings. Returning we again travel to the north by way of Richmond Street, as far as Oxford, along which we proceed eastward and gain an idea of that part of the city lying to the north, catching a glimpse of Wolsley Barracks the home of the London Company of the Royal Canadian Regiment. Down Richmond again, past the C. P. R. station and continuing south and east to the Hamilton Road, we cover this to the far eastern limits then return to Richmond and Dundas once more.

Having completed the tour of the city lines, we are now ready to board a Springbank car for the popular riverside resort. A delightful four mile ride it is skirting for a great portion of the way the bank of the river Thames and affording a splendid panoramic view of hill and dale, meadow and woodland, with the silver band of the river winding and sparkling in the midst reminding us that we are passing through no mean portion of the "Garden of Canada." Passing Woodland Cemetery, the city waterworks pumping station and reservoir, we are soon in the heart of the famous park with its sloping lawns, cool groves, pavilion swings, ball grounds and all the accessories which go to complete the ideal breathing spot, where we gladly alight to wander at will down the shaded walks and along the rippling river as a fit climax to a delightful session of sightseeing.



WATERWORKS DAM AND PUMP HOUSE at Springbank Park on the line  
of the London St. Railway Co., London, Ont.



BYRON BRIDGE AND MILL, adjoining Springbank Park, London, Ont.



VIADUCT, S. W. T. CO., approach-  
ing St. Thomas, on the line of the  
South-Western Traction Co. At this  
point the view obtained from the cars  
is one of the prettiest to be found in  
Western Ontario.

ENTERING ST. THOMAS, via  
The South-Western Traction Co., at  
the junction on Talbot Street with the  
St. Thomas Street Railway, over whose  
tracks the Traction Co.'s cars run  
through the city, on route to Port Stan-  
ley, London and St. Thomas' Populer  
Summer Resort.



# Canadian Postal Guide

## Rates of Postage

### LETTERS

To places in Canada, United States and Mexico ..... 2c. per ounce or fraction thereof  
 To United Kingdom and certain British Colonies ..... 1c. per ¼ oz.  
 To other countries ..... 5c. per half oz.

### POST CARDS

To places in Canada, United States and Mexico ..... 1c. each  
 To other countries ..... 2c. each  
 (Limit of size for private post cards 6 in. long by 3½ wide)

### NEWSPAPERS

To Canada, United States, Mexico, U. K. and certain British Colonies ..... 1c. per 4 oz.  
 To other countries ..... 1c. per 2 oz.

### BOOKS AND OTHER PRINTED MATTER, PHOTOGRAPHS, PLANS AND DRAWINGS, ETC.

..... 1c. per 2 oz.

### LEGAL AND COMMERCIAL PAPERS

To places in Canada ..... 2c. per oz.  
 To other countries, 5c. for 10 oz. and 1c. each additional 2 oz.

### PATTERNS AND SAMPLES

To places in Canada ..... 1c. per 2 oz.  
 To other countries, 2c. for 1st four ozs. and 1c. for each additional 2 oz.

### MERCHANDISE

To places in Canada and United States ..... 1c. per oz.  
 To other countries ..... parcel post

The enclosing of a letter or of any writing intended to serve the purpose of a letter, in any newspaper or in any packet sent by post and prepaid at less than letter rate, makes the sender liable to a fine.

All mail matter should be addressed to the street and number (if any) as well as the post office and province or state. Letters for general delivery should be addressed to the post office.

Letters addressed to places in Canada must be at least partially prepaid, and those addressed to Mexico and United States must be prepaid at least a full rate (2c.) Otherwise they will be sent to the Dead Letter Office.

Insufficiently prepaid letters for any place in Canada will be forwarded and charged double the deficiency.

Re-directed letters are not liable to any additional postage if handed back to the post office as soon as possible after receipt, unless a higher rate is required.

Request letters mailed in Canada, Newfoundland, Mexico and the United States in envelopes having thereon a request to be returned if not delivered, will be returned as requested.

### REGISTRATION

Money letters should always be registered. Every article intended for registration must be handed in at the wicket and a receipt obtained therefor.

The fee on all classes of articles addressed to countries to which mail matter may be registered is 5 cents.

The sender of a registered article posted in Canada for delivery in Canada or in any other postal union country may entitle himself to a certificate as to the disposal of the said article by the postmaster at the office addressed on prepayment of an additional 5 cents.

### INSURANCE ON REGISTERED LETTERS

Inland registered letters, that is, registered letters posted at and addressed to a Post Office in Canada, may be insured against loss for amounts not exceeding twenty-five dollars, on payment of the following fees, in addition to the full postage and Registered charges:—

Insurance Fee	Limit of Compensation
3 cents	\$10
4 cents	\$15
5 cents	\$20
6 cents	\$25

### SPECIAL DELIVERY

Letters posted in Canada with Canadian Special Delivery Stamp 10 cents, affixed (besides the regular postage) will be specially delivered within the limits of the Letter Carriers' delivery at the following postoffices, viz., London, (between 8 a.m. and 11 p.m.) Halifax, St. John, N.B., Fredericton, Quebec, Montreal, Ottawa, Kingston, Toronto, Brantford, Hamilton, Winnipeg, Victoria and Vancouver.

### BRITISH AND FOREIGN PARCEL POST

Closed parcels may be sent to places in Newfoundland, Jamaica, The United Kingdom, Japan, Barbadoes and all other countries with which The United Kingdom maintains a Parcel Post.

Customs declarations of the contents and value of each parcel must be filled up at the office of the sender. The rates of postage and weights can be ascertained at the enquiry office.

### P. O. SAVINGS BANK

Deposits from \$1.00 upwards on which 3 per cent. interest is allowed.

### MONEY ORDERS

The rates of commission for orders issued in Canada, for payment in Canada, Antigua, Barbadoes, British Guiana, Cuba, Dominica, Grenada, Hawaii, Montserrat, Nevis, Newfoundland, Phillipine Islands, Porto Rico, St. Christopher, (St. Kitts), St. Lucia, St. Vincent, Virgin Islands and the United States are as follows, viz:—

On order, up to \$5	3 cents
Over \$5 and up to \$10	6 cents
" 10 "	10 cents
" 30 "	15 cents
" 50 "	25 cents
" 75 "	30 cents

The rates of Commission on orders payable in the United Kingdom, British Possessions and all other countries upon which money orders may be obtained, except those mentioned above are as follows:—

Orders up to \$10	10 cents
Over \$10 and up to 20	20 cents
" 20 "	30 cents
" 40 "	50 cents
" 50 "	60 cents
" 70 "	70 cents
" 70 "	80 cents
" 80 "	90 cents
" 90 "	100 cents

There is no exchange of money orders with Spain. Duplicate orders issued free of charge.

### POSTAL NOTES

The Postal Note System affords a cheap and convenient means for renewing small sums, are sold and paid at more than 7000 post offices in Canada.

May be bought as quickly as stamps. May be bought during all post office hours. Can be crossed to insure safety.

To meet the public interest the rates have been fixed at very moderate figures as follows:—

1c on note for 20c	2c on note for 90c
1c " 25c	2c " "
1c " 30c	2c " 1.50
1c " 40c	2c " 2.00
2c " 50c	2c " 2.50
2c " 60c	3c " 3.00
2c " 70c	3c " 4.00
2c " 80c	3c " 5.00
	5c " 10.00

Canadian Postal Notes are payable only in Canada and the United States.



# Grand Trunk Railway System

*The Only Double Track Railway in Canada, and the Longest Double Track Railway in the World Under one Management*

Reaching all the principal points in the Provinces of Quebec and Ontario, and being the popular route for trade and travel between the Atlantic Coast and the Great Lakes

---



## “ THE INTERNATIONAL LIMITED ”

THE “RAILWAY GREYHOUND” OF CANADA, AND THE FINEST AND FASTEST TRAIN IN THE DOMINION. Leaves Montreal every day 9.00 a. m. for Toronto, Hamilton, Niagara Falls, Buffalo, London, Detroit and Chicago.

The Finest Road-bed in Canada. Modern and luxurious trains. Courteous employees. Beautiful Scenery. The best of everything.

The Most Popular Summer Resort Districts of Canada reached direct by Grand Trunk Railway System.

---

G. T. Bell, General Passenger and Ticket Agent, Montreal, Canada



**STANDARD PASSENGER TRAIN, GRAND TRUNK RAILWAY SYSTEM.** Operated over the Longest Double Trunk Railway in the world under one management, and the only Double Trunk Railway in Canada.



VIEW IN QUEEN'S PARK (Western Fair Grounds', London, Ont., on the  
line of The London Street Railway Co.



LONDON OLD BOYS IN QUEEN'S PARK, AUGUST, 1906.  
(Photo by Cooper & Saunders, London.)

## BRANTFORD IN A PARAGRAPH

(THE TELEPHONE CITY)



BRANTFORD'S proprietary right to the name "Telephone City" as the home of the instrument which has so largely revolutionized modern business has been authoritatively settled by Professor Graham Bell, the inventor; but this is by no means the city's only claim to fame, since it has long been known as a community whose inhabitants brought things to pass. A striking evidence of this is the recent diversion by the Grand Trunk Railway System of its main line in order to take it through this city,— an incident unique in the annals of railroading, and a most eloquent testimony to the importance to which the city has grown. That a city of 20,000 inhabitants should rank third among the exporting centres of this vast Dominion seems scarcely credible, but after a tour of the many extensive manufacturing establishments which have here their home and have caused Brantford to be termed "The Canadian Birmingham," one ceases to doubt but the rather is ready to exclaim like the Queen of Sheba "the half was not told me." The wide diversity of articles made in these humming hives of industry is simply amazing, and the variety is equalled by their quality which is such that "Made in Brantford" is a sufficient guarantee of excellence the world over. The Central School, Public Library, Grand Trunk Railway Station, Armouries and other public buildings, the large number of substantial Churches, hundreds of comfortable homes, the Brant and Soldiers monuments, the public parks and private grounds, all speak eloquently of a people who take a pride in their city and their homes; and this civic pride manifested by all alike, whether captains of industry or humble artisan, in public undertaking, private enterprise or the realm of sport has been the chief factor in developing this happy prosperous and beautiful city nestling in the verdant Grand River Valley, where away back in 1781 Alexander Westbrook built his rude log hut upon the brink of the river at what was then known as Brant's Ford in the midst of the hunting grounds of the Six Nation Indians, from whose famous chief Thayendanega, Captain Joseph Brant, the spot took its name.

J. W. F.

## GUIDE TO BRANTFORD BUSINESS AND PROFESSIONAL PEOPLE

*Churches and Pastors, Board of Health, Hospital Board  
Fire Alarm System, Cab Tariff, Etc.*

### Classified Business and Professional Directory

*As far as obtainable for this edition*

#### Artists' Materials

**ROBARTS & SON**  
72 Market St.

#### Bakers & Confect're

**CAMPBELL, W. J.**  
160 Colborne St.

**McHUTCHION, JOHN**  
363 Colborne St.

**RUSSELL, W. A.**  
110 Colborne St., Phone 179

**THE SUGAR BOWL**  
See Advt. 120 Colborne St. Phone 517

**The Whittaker Baking Co.**  
90 Queen St.

#### BARBERS

**GAYNOR, B. F.**  
64 Colborne St.  
Cigars & Tobacco, Hot and Cold Baths.  
See Advt.

**Gilbert, T. B.**  
775 Colborne St.  
Hair Cutting and Shaving Parlor, Hot and Cold Baths.

#### BARRISTERS

**Baird & Brown**  
141 Colborne St.

**HARLEY & SWEET**  
6½ Market St. See Advt.

#### HOSPITAL BOARD

Joseph Stratford, President; Mayor C. H. Waterous, Ald. E. Hart, D. S., C. E. Ashton, M. D.

**TAPSCOTT, C. S.**  
44 George St. See Advt.

#### Boycotes & Repairs

**BROWN, THOS. H.**  
138 Market St.

Gott. Fred H.  
114 Dalhousie St.

**HAWTHORNE, W. G.**  
76 Dalhousie St. Phone 646  
See Advt.

**MITCHELL, C. J.**  
41 Market St.

#### BOOTS and SHOES

**CALBECK & BARBER**  
4 Market St. Phone 312

**COLES SHOE CO.**  
122 Colborne St. Phone 474

**NEIL, THE SHOE MAN**  
158 Colborne St. Phone 491

Wm. Wright  
222 Market St.

#### Business College

**Brantford Bus. & Short'd College**  
187 Colborne St. See Advt.

#### Carpet and House

#### Furnishings

**DUNCAN, CHARLES**  
74-76 Colborne St. Phone 112

**LONG, M. E.**  
83-85 Colborne St. Phone 429

#### BOARD OF HEALTH

Mayor C. H. Waterous, Jos. Bowes, S. Hartley, J. Heath, John H. Spence, Samuel R. Stewart, William Robertson.

Classified Business and Professional Directory, etc.

**BRANTFORD  
BUSINESS AND  
PROFESSIONAL  
PEOPLE**

*As far as obtainable for this Edition.*

CLOTHING

**GRAFTON & CO.**

142 Colborne St. Phone 102

**OAK HALL**

124-6 Colborne St. Phone 296  
See Advt.

**WHITLOCK, R. T.**

Colborne and Queen Phone 169

Confectioners

**THE SUGAR BOWL**

120 Colborne St. Phone S17  
See Advt.

**RUSSELL, W. A.**

110 Colborne St. Phone 197  
See Advt.

Coal, Wood & Cem't

**WOOD & CO., T. L.**

253 Colborne St. Phone 91

CORDAGE

**Brantford Cordage Co.,**

West Brantford. Phone 411

DENTISTS

**BABCOCK, ALMON, L.D.S., D.D.S.**

370 Colborne St. Phone 34

**POPPLEWELL, HARRIS**

Cor. Market & Chatham St.  
Phone 470

DRUGGISTS

**SIMPSON, W. WARD, Phm.B.**

See Advt. 28 Market St. Phone 246

**MCDONALD, FRANK G.**

32 Market St. Phone 403

**ROBERTSON, M. H.**

Market and Dalhousie Sts. Phone 332  
See Advt.

**TAPSCOTT & CO., S.**

24 Market St. Phone 243  
See Advt.

FLORISTS

**IVEY, THOS. A.**

101 Colborne St. Phone 372

Fruits and Game

**RYERSON, T. E.**

22 Market St. Phone 183

Furnaces, Etc.

**TELEPHONE CITY STOVES**

81 Colborne St. Phone 582  
See Advt.

GROGERS

**BON MARCHE**

66 Colborne St. Phone 280

**CASH BARGAIN**

See Advt. 104 Dalhousie St. Phone 290

**WINTER & SON, G. S.**

139 Colborne St. Phone 264

**FORDE & CO., J.**

12 Market St. Phone 141  
See Advt.

**WRIGHT, FRED**

172 Market St. Phone 683

HOTEL

**The New American Hotel**

87 Dalhousie St. Phone 114

**BELMONT HOTEL**

133-137 Colborne St. Phone 104

INSURANCE

**JONES & HAMMOND**

122 Dalhousie St.

JEWELERS

**COX & SON, A.**

6 Market St.

**PEQUEGNAT, A. N.**

26 Market St. See Advt.

**NEWMAN & SONS**

93 Colborne St.

Ladies' Furnishings

**HUNTER & CO., J. G.**

123 Colborne St. Phone 441

Merchant Tailors

**BROADBENT, JOS.**

130 Colborne St.

**COLBECK & BARBER**

168 Colborne St. Phone 312

**HENDERSON, T. B. W.**

West End Tailor  
49 Colborne St.

**WILLIAM MILLER**

128 Colborne St. Phone 119

**WHITLOCK & CO., R. T.**

96 Colborne St.

MILLINERY

**The Mitchell's Millinery Parlors**

95 Colborne St.

Musical Teachers

**DARWEN, THOMAS**

140 George St.

**MIHELL, LILLIAN**

169 Chatham St. Phone 434a

**WHITE, GEO. C.**

167 Market St.

**WRIGHT, DAVID L.**

See Advt. Studio. 46 Market St.

Musical and Musical

instruments

**SMITH, JUDSON H.**

**WADE, B. J.**

OPTICIAN

**SIMPSON, W. WARD, Phm.B.**

28 Market St. Phone 246

OSTEOPATHY

**ATKINSON, JOHN T. Dr.**

105 Dalhousie St. Phone 516

Painters & Decorat's

**TAYLOR, D. D.**

See Advt. 20 Colborne St. Phone 392

**TILLEY, JAS.**

168 Market St. Phone 68

PHYSICIANS

**FRANK, HARRY R.**

158 Park Ave.

**GAMBLE, JOHN B.**

375 Colborne St.

**WILEY, W. D.**

164 Park Ave. Phone S20

Plumbers, Steam

and Gas Fitters

**COWAN, T. A.**

71 Colborne St. Phone 318

**TAYLOR & CO., CHAS.**

14 King St. Phone 7

**MINNES, T. J.**

64 Colborne St. Phone 301

REAL ESTATE

**PITCHER & CO., J. J.**

7 S. Market St. Phone 326

**READ, S. G., The Agency**

129 Colborne St.

**SIMS, EDWIN,**

21 George St.

Second Hand Goods

**BULLOCK, H.**

78½ Market St.

STATIONERS, Etc.

**MALLAGH, W. J.**

104 Dalhousie St. Phone 306

Y. M. C. A.

See Advt. 187 Colborne St. Phone 231

Y. W. C. A.

Cor. George and Wellington Sts.  
Phone 70



VIEWS AT SPRINGBANK PARK FOUR MILES WEST OF LONDON  
On the line of the London Street Railway Co., a most delightful place to visit





**BATHING SCENE AT PORT STANLEY**, the well known and popular summer resort on Lake Erie, nine miles south of St. Thomas and twenty-five miles south of London, on the line of the Pere Marquette Railway and the South-Western Traction Co. The Pere Marquette Railway, which has close connection with the G. T. R., M. C. P. and C. P. R., carried over 68,000 visitors to Port Stanley during the season of 1908. Thirty cents is the railroad return fare between London and Port Stanley during the summer months. The hotel and boarding house accommodation are good.

Brantford Business and Professional People, Etc.

THE  
**Grand Trunk  
Railway System**

The largest double track railway in the world under one management, and the only double track line in Canada.

REACHES  
CANADA'S MOST  
POPULAR SUMMER  
RESORTS



GRAND TRUNK RAILWAY DEPOT, BRANTFORD, CAN.

THE  
**Canada Agency Co.**  
LIMITED

OWN AND OPERATE THE  
**Canada Collecting System**

Agents for High-Class  
**ADVERTISING NOVELTIES**

HEAD OFFICE  
LONDON, CANADA

C. S. TAPSCOTT  
BRANTFORD SOLICITOR

**Oak Hall**  
The  
**Home of Good Clothing**

FOR MEN, BOYS and CHILDREN  
Phone 296

124-126 G.borne St., Brantford

J. M. DOUGLASS

MANAGER

**Don't Neglect  
Your Eyes**

We Test Eyes, Fit Glasses and Spectacles and do Repair Work.  
Absolute satisfaction guaranteed.

Prices are as low as is consistent with good work.



**W. Ward Simpson, Ph.D.B.**  
Druggist and Graduate Optician

28 Market St. Phone 246 BRANTFORD



Brantford Business and Professional People, Etc.

## Cash Bargain Grocery

HAS A COMPLETE  
LINE OF

FANCY GROCERIES

AT LOWEST  
MARKET PRICES.

ALSO

Fresh Fish Every Week

104 DALHOUSIE ST.  
Phone 290 Brantford



MOHAWK CHURCH, BRANTFORD, CAN., BUILT IN 1785

179

IS OUR PHONE NO.



Russell  
CONFECTIONER



110 COLBORNE STREET  
BRANTFORD

## Telephone City Stoves

SUCCESSORS TO J. B. TURNER LIMITED

81 Colborne Street Brantford, Canada

PHONE 582

Manufacturers of "Telephone City"

AIR TIGHT, TOP DRAFT

### Coal and Wood Stoves

(J. B. Turner's Patent 79787)

Dealers in Jewel Ranges and Heaters, Kelsey Warm Air Generators, Tinware, Enamel and Aluminum Ware, Fawcroughs, Stove Repairs, Dairy Utensils, Gas Ranges, Gas Heaters, Gas Burners and Piping, etc.

## THE S. G. READ AGENCY

129 COLBORNE ST.  
BRANTFORD, ONT.



The Leading Agency for Real Estate  
Investments of All Kinds

Brantford Business and Professional People, Etc.

## W. J. Wray & Co.

Wholesale Dealers in  
and Importers of

### JEWELRY

WATCHES NOVELTIES  
MUSICAL CLOCKS, Etc.



171 KING ST.  
LONDON CANADA



OLD INDIAN WHEGGE AND ROAD, BRANTFORD, CAN.

## Springbank Park

Four Miles  
West of

### LONDON

ON THE LINE of THE LONDON  
STREET RAILWAY

Is a Delightful Place  
to Visit

WHEN IN THE FOREST CITY



Well Equipped Cars and good  
service every day and evening  
except Sunday.



## Hawthorne's Repair Shop

Phone 646. 76 Dalhousie St., Brantford

## EVERY DOLLAR

PUT IN WHEELS

AS REPAIRED BY US,  
spells satisfaction with a big  
S. We are so fixed as to  
parts, materials, shop and  
repairers as to take a bicycle  
in almost any condition and  
put it in fine order in a short  
space of time and at little  
outlay on the part of the re-  
pairer. Naturally we respect  
your business in our line.

## OUR LEADERS

QUALITY CHOCOLATES  
BUTTER SCOTCH  
LADY CARAMELS  
FANCY CAKES and PASTRY

## RUSSELL

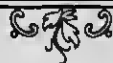
110 Colborne St.

Tel. 179

Brantford, Ont.

Brantford Business and Professional People, Etc.

Lawson & Jones



Printers  
Lithographers  
Box Makers

London, Canada



GRAND RIVER, BRANTFORD, CAN

Gammage & Sons

WHOLESALE  
FLORISTS



707 DUNDAS ST.  
LONDON, ONT.

Largest Number of Greenhouses  
in Canada

LONG DISTANCE PHONE 90

*WE HAVE*  
***Brownie Cameras***

***for \$1. \$2. \$6. and \$9***

*Full Instructions With Each  
All Amateur Supplies in Stock*

***M. H. ROBERTSON***

TEL. 332 *Market and Dalhousie Sts.* BRANTFORD



*Do you want a Clean Shave  
And a Fragrant Cigar,  
A Bath that will cleanse  
And a Cut of Your Hair?*



*THEN DROP  
IN AT*

***B. F. GAYNOR'S***

*64 Colborne St., Brantford*

*Cigars and Tobaccos*

*Bath*

*Shaving*

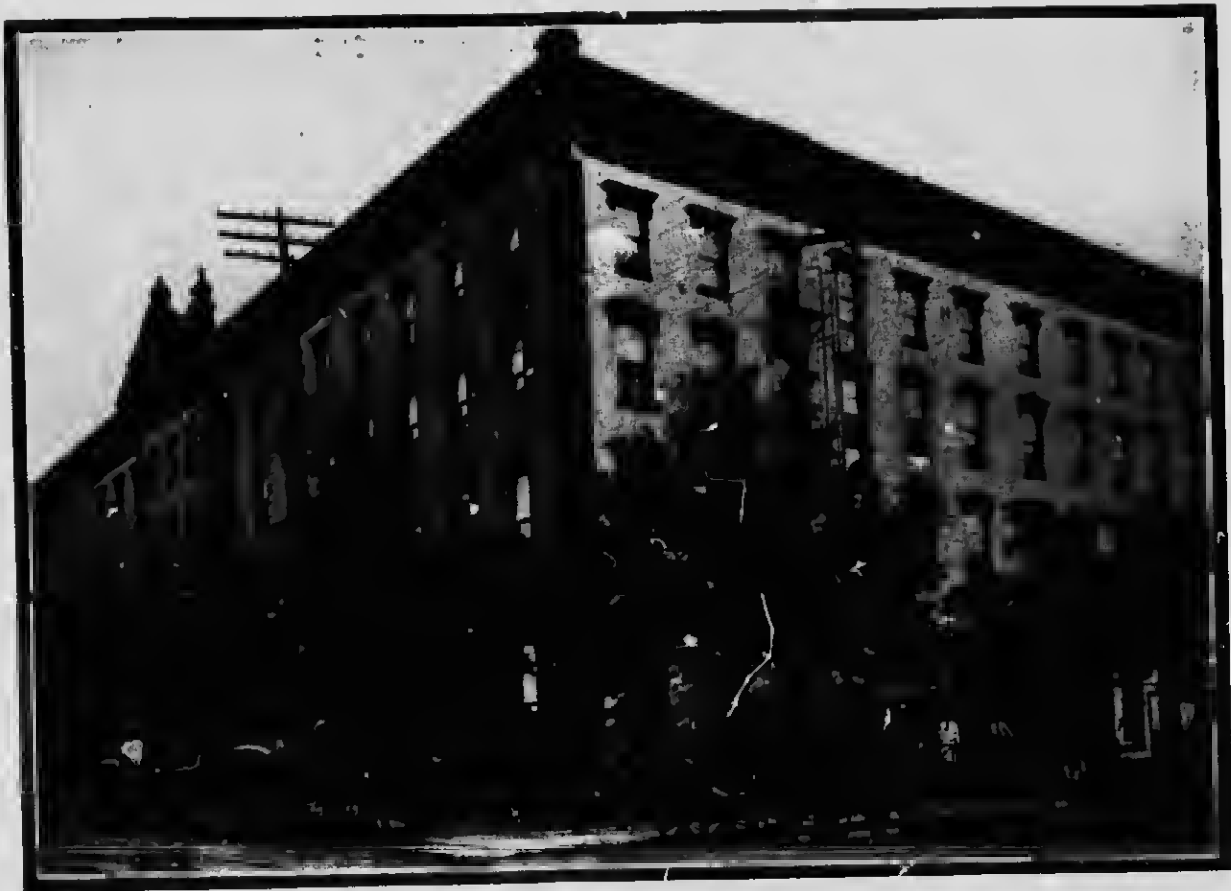
*Hair Cut*



**BRIDGE OVERLOOKING HARBOR AT FORT STANLEY.** Also a bird's eye view of Hill-Crest on the east, upon which is located the well known "Hill-Crest Hotel," at a height of 150 feet above the Lake. A most pleasant and healthful spot to spend a vacation. Write Manager of Hotel for particulars.



**BLUFF OVERLOOKING THE LAKE AND BATHING BEACH** at south end of "Hill-Crest." Fort Stanley.



**THE TECUMSEH, LONDON, ONTARIO.** To those contemplating a visit to London, the Forest City of Canada, and desiring a mode of living where the requisites of the most fastidious are catered to, will find complete satisfaction as guests of this splendidly equipped hotel. Centrally located as regards the business district and convenient to all car lines whereby the numerous picturesque resorts are easily reached, it is, so to speak, "next door to everything." At the Tecumseh you can live as you please, formal or informal, and within the limits of the wall filled or economical purse. Cuisine under the direction of one of Europe's famous chefs. Try it.

Brantford Business and Professional People, Etc.

## Calbeck & Barber

TAILORS and MEN'S  
FURNISHINGS

4 Market St. and 168 Colborne St.  
PHONE 312

BRANTFORD CANADA

## T. J. MINNES & CO.

PLUMBERS

Hot Water, Steam and Gas Fitting

Phone 301 64 Colborne St., Brantford, Ont.

## LILLIAN J. MIHELL

Gold Medalist in Piano, under A. G. Voght,  
Toronto, Ont. Graduate in Vocal from Moulton  
College and Conservatory of Music, Toronto,  
Ont.

Pupils Instructed in Vocal  
and Instrumental

TERMS LIBERAL PHONE 434a  
169 Chatham St. Brantford Ont.

## Y. M. C. A.

187 COLBORNE ST.  
PHONE 231 BRANTFORD

Open Week Days—8.30 a. m. to 10 p. m.

Social Room, Reading Room, Gymnasium,  
Shower Baths, Swimming Bath and many other  
privileges. ANNUAL FEE \$5.

## THE CANADA COLLECTING SYSTEM

COPYRIGHTED  
OWNED AND OPERATED BY  
**THE CANADA AGENCY COMPANY**  
LONDON, CANADA LIMITED  
Is a Valuable Assistant to every Business or Professional Man having  
accounts to collect. WRITE for Descriptive Circular.

## Churches and Pastors Fire Alarm System

SUNDAY SERVICES 11 A. M. and 7 P. M.

**Anglican** GRACE CHURCH, on Albion, opp. Church  
St. Rev. G. MacKenzie, Rector. Sunday  
School at 2.30 p. m.

ST. JUDE'S, cor. Peel and Dalhousie. Rev. T. A.  
Wright, Rector. Sunday School at 3 p. m.

ST. JOHN'S CHURCH, 150 Oxford. Rev. J. A.  
Rounthwaite, Rector.

ST. JAMES' CHAPEL, Rev. E. W. Hughes, Rector.  
ST. PAUL'S CHURCH, West Mill, Rev. E. W.  
Hughes, Rector.

TRINITY CHURCH, Cor. Cayuga and Huron. Rev.  
T. A. Wright, Rector. Sunday services at 3.30 p. m.  
Sunday School at 2.15 p. m.

**Baptist** FIRST CHURCH, Rev. S. J. Faymer, B. A.,  
Pastor. Sunday School at 3 p. m. B. Y. P. U.  
Monday at 8 p. m. Prayer meeting Wednesday 8 p. m.

PARK CHURCH, cor. George and Darling. No Pastor  
at present.

CALVARY CHURCH, on Dalhousie, opp. Alexandra  
Park. Rev. J. B. Champion, Pastor. Sunday School at  
2.45 p. m. B. Y. P. U. Monday at 8 p. m. Prayer meeting  
Wednesday at 8 p. m.

IMMANUEL CHURCH, cor. Port and Erie Ave. Rev.  
Andrew Imrie, Pastor. Sunday School at 2.30 p. m. B. Y.  
P. U. Monday 8 p. m. Prayer meeting, Wednesday at 8 p. m.

HOLMEDALE MISSION. Sunday services at 3 p. m.  
and 7 p. m. Thursday evening at 8 p. m.

SHENSTONE MEMORIAL CHURCH, Rev. W. J.  
H. Brown, Pastor.

**B. M. E. Church** Murray cor. Dalhousie. Rev.  
T. H. Slater, Pastor. Sunday  
School at 3 p. m. C. E. Tuesday 8 p. m. Prayer meeting  
Wednesday at 8 p. m.

**Congregational** Cor. George and Wellington. Rev.  
W. E. Girty, B. A., Pastor. Sun-  
day School at 3 p. m. Pilgrims' Band, Tuesday at 8 p. m.  
Prayer meeting, Wednesday at 8 p. m.

**Free Methodist** Market, near Sheridon St. T. C.  
M. O. Coates, Pastor. Sunday  
School at 9.45 a. m. Prayer meeting Thursday at 7.45 p. m.

**First Church of Christ Scientist** 44 George St.  
Sunday meet-  
ing 11 a. m. Sunday School 12 noon. Wednesday at 8 p. m.

**Methodist** WELLINGTON ST. CHURCH, Rev.  
A. L. Gee, M. A. Ph.D., Pastor. Sunday  
School at 2.45 p. m. E. L. of C. E. Monday at 8 p. m.  
Prayer meeting Wednesday at 7.30 p. m.

BRANT AVENUE CHURCH, cor. Brant Ave. and  
Richmond. Rev. W. H. Harvey, B. A., Pastor. Sunday  
School at 2.45 p. m. E. L. of C. E. Monday at 8 p. m.  
Prayer meeting Wednesday at 8 p. m.

OXFORD ST. CHURCH, West Brantford. Rev.  
C. M. Wright, Pastor.

COLBORNE ST. CHURCH, near Park Ave. Rev.  
Wm. B. Caswell, B. A., Pastor.

SYDENHAM ST. CHURCH. Rev. C. H. Deacon,  
Ph.B., Pastor.

## C. S. TAPSCOTT

BARRISTER, SOLICITOR, ETC.

44 GEORGE ST.  
BRANTFORD, CANADA

LOCAL SOLICITOR FOR THE  
CANADA AGENCY CO., LIMITED  
LONDON, CANADA

## A. N. PEQUEGNAT

JEWELER

26 MARKET ST. BRANTFORD, ONT.

## S. Tapscott & Co.

DRUGGISTS

24 Market St. Phone 243 Brantford

## THE BRANTFORD Business COLLEGE

Y. M. C. A. Building, Brantford, Canada

Bookkeeping, Gregg Shorthand, Touch  
Typewriting and all Kindred Subjects  
successfully taught by experienced and  
wide-awake Teachers.

**EVERY GRADUATE Absolutely Guaranteed  
A Good Position**

Write or call for Catalogue giving full partic-  
ulars. Students may enter at any time.

A. E. DAY, PRINCIPAL.

Brantford Business and Professional People, Etc.

**THE SUGAR BOWL  
Confectionery and Restaurant**

MEALS SERVED AT ALL HOURS  
ICE CREAM and ICE CREAM SODAS  
ALL FLAVORS or CRUSHED FRUITS

Our Chocolates and Bon-Bons are Lowest in  
Price and Best Quality to be found in Ontario

**L. LAONDARITIN**  
Phone 517 120 Colborne St. BRANTFORD

**WILLIAM MILLER**

**MERCHANT TAILOR**

A Select Line of Imported  
and Domestic Woolens  
always in Stock

Phone 119 128 Colborne St., Brantford

**DAVID L. WRIGHT**

ORGANIST FIRST BAPTIST CHURCH

TEACHER OF  
ADVANCED PIANO, ORGAN  
AND THEORY

STUDIO: 46 PALACE ST. BRANTFORD

**HARLEY & SWEET**

*Barristers, Solicitors, Etc.*

6½ MARKET ST. BRANTFORD, ONT.  
Solicitors for The Standard Bank

James Harley, K.C. Edmund Sweet, L.L.B. H. S. Hewitt

**Churches and Pastors**

*Continued*

**Fire Alarm System**

SUNDAY SERVICES 11 A. M. and 7 P. M.

WESTLEY CHURCH. Rev. F. W. Thomson, B. A.,  
Pastor. Sunday School at 2.30 p. m. E. L. of C. R.  
Monday at 8 p. m. Prayer meeting Wednesday at 8 p. m.

Presbyterian ZION CHURCH, on Darling, near  
Market. Rev. W. A. J. Martin, Pastor.  
Sunday School at 3 p. m. Y. P. C. A. Monday at 8 p. m.  
Prayer meeting Wednesday at 8 p. m.

ALEXANDRA CHURCH, cor. Peel and Colborne.  
Rev. H. J. Pritchard, B. A., Pastor.

ST. ANDREW'S CHURCH, cor. Jantre and Brant  
Ave. Rev. F. J. Maxwell, Pastor.

BALFOUR ST. CHURCH, Sunday School 3 p. m.  
Prayer meeting Wednesday at 7.30 p. m.

Roman Catholic ST. BASILE'S CHURCH, cor.  
Palmy and Crown. Rev. P.  
Lennon, Pastor. Sunday services, Mass 7.30 a. m., High  
Mass 11 a. m. Sunday School at 2.30 p. m. Vespers at 7  
p. m. Weekday Mass at 7 a. m. Winter Mass at 8 a. m. on  
Sunday and 7.30 on week days.

ST. MARY'S CHURCH, cor. Colborne and Brock.  
Rev. J. P. Cummings, Pastor. Sunday services, High Mass  
10 a. m. Sunday School at 2.30 p. m. Vespers at 4 p. m.  
Weekday Mass at 8 a. m. Winter, Sunday at 10.30 a. m.

Salvation Army Darling, near Market. Harcey  
Kendall, Staff Captain. Sunday  
services at 7 and 11 a. m., and 3 and 8 p. m. Week night,  
Thursday and Saturday at 8 p. m.

Seventh Day Adventists Meet in Orange Hall  
160 Dalhousie Street.  
Rev. J. W. Crolic, Pastor. Sunday services at 3.30 p. m.  
and Sunday School at 2.30 p. m. Wednesday Prayer  
meeting at 7.30 p. m.

**FIRE BOX NUMBERS (Telegraph System)**

- |  |                                |
|--|--------------------------------|
| 9 For drowning accidents at<br>bathing grounds | 36 Albion and Richmond         |
| 12 Brock and Chatham                           | 41 Kerby and Edgerton          |
| 13 Brock and Dalhousie                         | 42 Allin and James             |
| 14 Brock and Victoria                          | 43 Palmerston & Chestnut A     |
| 15 Park Ave. and Chatham                       | 45 Terrace H. & Stedham        |
| 16 Park Ave. and Darling                       | 46 Ont. Inst. for the Blind    |
| 17 Park Ave. and Victoria                      | 51 West Mill and Sterling      |
| 19 Clarence and Dalhousie                      | 52 West M. & Chestnut Ave      |
| 21 Engle and Erie Aves                         | 61 Market and Colborne         |
| 23 Market and Jew                              | 62 King and Colborne           |
| 24 Market and Nelson                           | 63 Oxford and Gilkison         |
| 25 Nelson and Clarence                         | 64 Oxford and Grant            |
| 26 Charlotte & Marlborough                     | 121 Central Fire Station       |
| 27 Market and Durham                           | 124 Elgin, nr. Bicycle Factory |
| 31 Albion and West                             | 132 Cayuga and Superior        |
| 32 Sheridan and West                           | 134 Verity Plow Works          |
| 34 Palace and Duke                             | 412 F. Binder Twine Co.        |
| 35 Waterloo and Brant Ave                      | 413 MacEable Iron Works        |

**CAB TARIFF**

25c for 15 minutes, or heart of city to and from depot;  
50c. for 30 minutes; \$1.00 per hour. From 9 p. m. to 6 a. m.,  
double fare.

**J. FORDE CO.  
GROCERS**

Phone 141 12 Market St., Brantford

**EDWIN SIMS  
CONVEYANCER, ETC.**

GENERAL FINANCIAL and LAND AGENCY 21 GEORGE ST.  
BRANTFORD

**D. D. TAYLOR**

FINE SIGNS

HOUSE PAINTING, DECORATING

Sheet, Plate and Ornamental Glass

PHONE 392

20 Colborne St. Brantford, Ont.

OFFICE PHONE 7 HOUSE PHONE 551

**Chas. Taylor & Co.**

Sanitary Plumbers

HOT WATER and STEAM HEATING  
GAS HEATING and LIGHTING

Get Our Prices Before Placing Your Order

Office and Showroom: 14 King St., Brantford

**Thomas Darwen**

Organist and Choirmaster Wellington Street  
Methodist Church, Brantford. Gold and Silver  
Medalist of Brantford Conservatory of Music.

TEACHER OF PIANO  
ORGAN and THEORY

Studio: 140 George St., Brantford



VIEWS AT GRAND BEND, THE  
SUMMER RESORT ON  
LAKE HURON

GRAND BEND (fourteen miles north-west of Exeter Station, on the G. T. R.) is a most popular Summer Resort.

Notwithstanding its present difficulties of access, more than one hundred cottages have sprung up during the past few seasons. Situated at the artificial mouth of the Aux Sable River, it abounds in charming back-woods landscapes seldom equalled. The river scenery, the great number of varieties of trees and flowers, the splendid beach, and, most of all, the free and easy social atmosphere that prevails among the campers, continue to attract an increasing summer population.







VICTORIA PARK, LONDON, ONT., is beautifully located in the center of the city and is surrounded by many fine residences.

*Cut  
Flowers,  
Floral  
Designs  
AND  
Decorative  
Plants*



INTERIOR OF PALM HOUSE

J. GAMMAGE & SONS

LONDON, ONTARIO

INVITE YOUR INSPECTION AND PATRONAGE

32 GREENHOUSES containing over 100,000 feet  
of glass and thirteen acres, all devoted to Plants and  
Flowers.

ROSES, CARNATIONS, LILY OF  
THE VALLEY, AT ALL  
SEASONS

## Right Use of Canadian Air

"As free as the air" is a proverbial expression, and nothing is more essential to health and happiness than this one great natural product, which an trust ce combine has ce will ever be able to monopolize; and yet nothing, perhaps, is more neglected than the proper use thereof. As evidence of this it is affirmed that in the average human being the lungs—the main organ of respiration—are far from being developed to their full capacity. What wonder then that the "White Plague" makes such progress in our midst? and what more efficient means—infinity in advance of the building of sanatoriums—to stay its ravages, than by the proper development of these most important organs and thus increase the reactive power of the individual? To attain this end the following suggestions will be found of value:

**BREATHE PURE AIR.** Briefly, the purpose of respiration is to absorb into the blood the life giving oxygen from the atmosphere, and to throw off the poisonous carbonic acid gas which is constantly being generated in the human body. It is therefore of the utmost importance that the air we breathe shall be pure, containing the largest percentage of oxygen and a minimum of carbonic acid gas; hence an outdoor life is the most healthful, and everyone should strive to secure from one to two hours out of the twenty-four at the very least in the open air, (to persons with weak lungs this is imperative) while the periods within doors should be spent in large and well ventilated rooms.

**BREATHE THROUGH THE NOSE.** It is stated that while primitive man as typified in the savage races invariably breathes through his nose, almost fifty per cent. of the denizens of highly civilized communities breathe through the mouth. As the purpose of the nose in respiration is to act as a filter, clarifying and warming the air before it passes into the lungs, and barring out the particles of dust, microbes, etc., the importance of always inspiring through it is obvious.

**CARRY THE HEAD UPRIGHT AND SHOULDERS BACK.** When the head and shoulders droop, the upper part of the lungs are cramped interfering with their full and natural action.

**TAKE FULL, DEEP INSPIRATIONS.** Short, shallow breathing exercises the upper part of the lungs only, while deep, regular breathe bring their every part into play with manifold benefit to the entire system.

**EXPIRATION SHOULD BE FULL AND REGULAR.** Irregular and spasmodic action should be avoided just as carefully in expiration as in inspiration.

**BREATHING EXERCISE** in the open air for a few minutes daily, giving strict attention to the foregoing cardinal rules will be found very beneficial, v hile their general observance throughout the day should be cultivated.

**SLEEP IN A WELL VENTILATED ROOM.** When it is considered that out of one hundred parts of oxygen inspired, but thirty-three are absorbed in the twelve hours of day and sixty-seven during the twelve of night, it will be readily seen that pure air breathed at night is even more important than in the day-time. The window of a sleeping room should be let down from the top, summer and winter, avoiding a draught over the bed, a kerosene lamp should never be left burning; plants should be rigidly excluded and featherbeds tabooed.

**EAT PLENTY OF GOOD, WHOLESOME FOOD.** Milk and eggs are most nourishing. Apples and grapes are wholesome fruits, while fresh fish and meats in moderation are beneficial.

**CHEW ALL FOOD THOROUGHLY BEFORE SWALLOWING.** Fast eating is a deadly evil, and nothing should be allowed to interfere with the thorough mastication of the food, which is a most important part of the digestive process. For this purpose are w given teeth, which are worthy of every care and should be thoroughly cleaned after each meal.

**CULTIVATE CHEERFULNESS AND ESCHEW WORRY.** This last needs no eulogiums upon as its importance is surely patent to all.

The general careful and intelligent observance of the above suggestions is guaranteed to produce in this bracing Canadian climate a percentage of contentment equal to any spot upon the globe.

# ROBERTS ENGRAVING COMPANY

LIMITED

DESIGNING  
ILLUSTRATING  
ENGRAVING  
HALF TONE ZINC  
ETCHING

LONDON  
CANADA  
432 RICHMOND ST.



**THE ARLINGTON, TORONTO, CANADA,** has a most delightful location, situated at the Corner of King and John Streets, one block west of Toronto a new Theatre, "The Royal Alexandria." The rates at this hostelry are very moderate. Illustrated and descriptive Booklet will be gladly furnished upon application.



# Rossin House

## TORONTO

---

---

Corner King and York Streets

American Plan

\$2.00, \$2.50, \$3.00 Per Day

European Plan

\$1.00 Per Day

### DUTCH GRILL ROOM

IN CONNECTION

50 ROOMS WITH PRIVATE BATHS

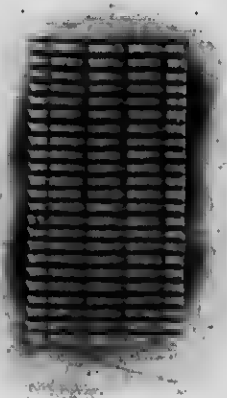


AN INTERIOR VIEW

## The Maximum Light Glass

is a form of window glass, scientifically arranged so as to gather the light from the sky, project and diffuse natural daylight into all parts of dark and otherwise useless apartments and space.

A NEW  
WINDOW  
GLASS  
OF  
WONDER-  
FUL  
MERIT



NO DARK  
ROOMS OR  
BUILDINGS  
WHERE  
MAXIMUM  
IS  
USED

Inner Surface of Maximum  
Light Glass

SEND US YOUR SPECIFICATIONS. WE ARE  
ALWAYS PLEASSED TO QUOTE PRICES

The Hobbs Manufacturing Co., Limited  
LONDON WINNIPEG TORONTO

# Lawson & Jones

## *Printers and Lithographers*

*Box Makers and Envelope  
Manufacturers, Calendars,  
Advertising Novelties, Etc.*



LONDON, ONTARIO, CANADA

**A. TILLMANN  
TAILOR**

315 Richmond St. Phone 730 Long Distance

LONDON, CAN.

**Dennis' Iron Stable Fittings**

Are Sanitary, indestructible and ornamental and are conducive to the health and comfort of the horse. SEND FOR A CATALOGUE.

**DENNIS WIRE and IRON WORKS CO.**  
Foot of Dundas St. LIMITED  
LONDON, ONT.



**AUTOMOBILES  
AND AUTOMOBILE ACCESSORIES**

**W. F. HORTON CO.,** London, Ont.

**Ferndale House**

Lake Rosseau, Muskoka, Canada  
Short Distance from Pt. Carling, the Centre of Lake  
Navigation

J. COPE, PROPRIETOR

Boats call twice daily. Post Office in Hotel.  
Good Bathing, Boating and Fishing.  
See photo of Hotel elsewhere in this book, and write for  
descriptive circulars

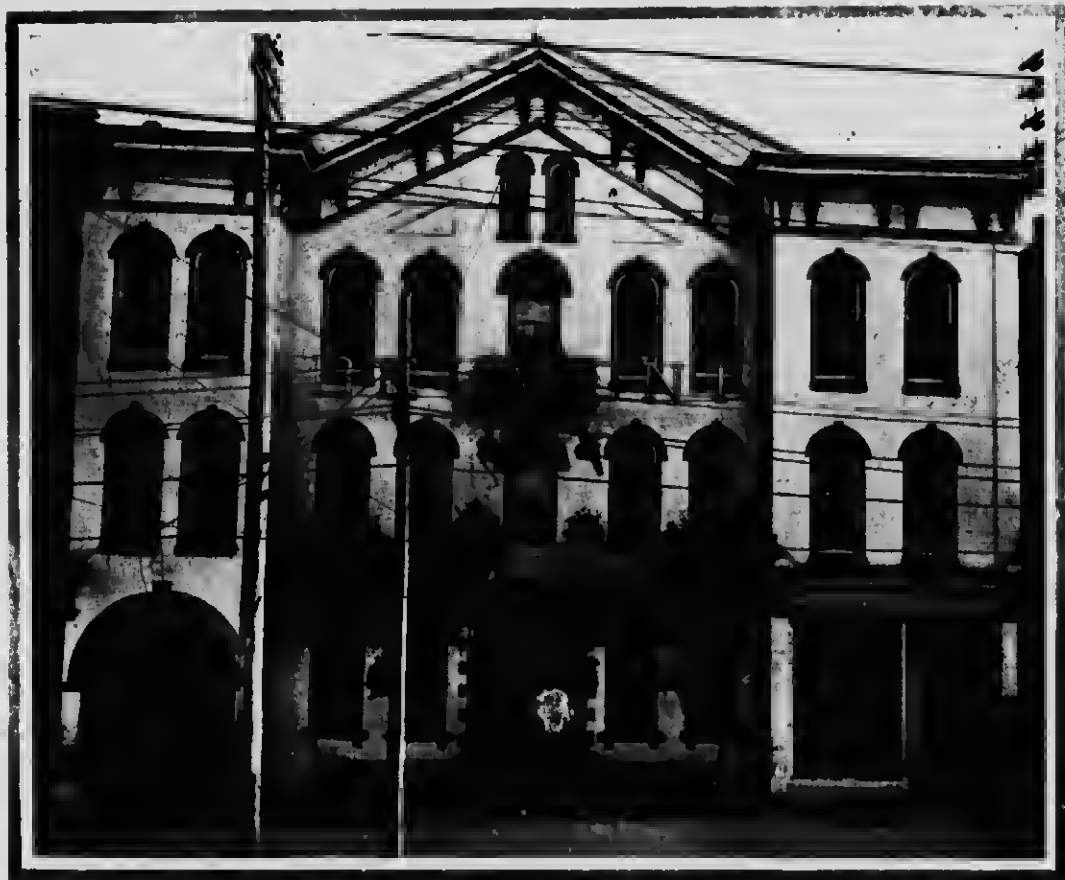
**Canadian Summer Resorts**

THE facilities afforded within the bounds of this broad Dominion for summer tours and holiday jaunts are so many and varied that none need be tempted to stray beyond our own borders in quest of change and recreation. Indeed the fame of Canadian summer resorts is such, that literally thousands of American visitors annually cross the line to participate in their delights and to breathe in the health giving ozone of our northern latitudes.

Many of these summer visitors throng to what is known as the "Highlands of Ontario", a general term applied to the mountain and lake regions in the northern part of Ontario reached via The Grand Trunk Railway System, and which is subdivided into districts known by the names of the various chains of smaller lakes which nestle among the spurs of the Laurentides, veritable gems of beauty forming inviting retreats for the tired denizens of the bustling cities. The Muskoka Lakes are possibly the more popular; but the Lake of Bays, Kawartha Lakes, Lake Couchiching, Lake Nipissing and the French River all have their distinctive features and no lack of patrons, while summer cottages and hotels are everywhere in evidence. Bright skies, sparkling waters, lovely woodland and pure air form idyllic surroundings, while fluttering flags, glancing sails, bustling motor launches and larger passenger steamers with their loads of gay pleasure seekers add life and interest to the scene. The Georgian Bay with the thousands upon thousands of islands scattered over its broad bosom—some forming entrancing fairy bowers and others bold, rugged and grandly forbidding, attract other throngs, while the Algonquin National Park and the famous Temagami region draws the Nimrods and disciples of Izaak Walton from the extremes of a continent.

The glories of the Canadian Horseshoe Falls at Niagara have world wide fame and call for no enlargement here, while the beauties of the Ottawa and its valley and the pleasures of the St. Lawrence route, affording opportunity of drinking in the ethereal loveliness of the Thousand Islands; the exciting dash through the Lachine Rapids, the splendors of Montreal; the view from the river of the mighty natural fortifications and the frowning citadel of Old Quebec; the broader reaches of the lower river; Riviere du Loup, Murray Bay, Tadousac, with their life and laughter; the solemn grandeur of Capes Trinity and Eternity, the scenic splendors of the Saugenay, the charms of Chicoutami, Ha Ha Bay and Lake St. John have been the theme of many a pen, while the special delights of Cocouna, Bic, Rimouski *et al* with their weird traditions have been storied again and again.

The artist, the poet and litterateur have vied with one another in immortalizing the distinctive loveliness of the Metapedia Valley, along the Gaspé shore, the numberless fantastic indentations of the Baie de Chaleur, the glories of the Miramichi and the Bay of Fundy; while the Bras D'Or Lakes of Cape Breton and the resorts of Nova Scotia have an atmosphere of romance and pathos inseparable from the scenes of the sorrows of the unfortunate Acadians immortalized by Longfellow. Prince Edward Island has beauties all her own, and when the Western Provinces take up the tale the list becomes interminable. The surprises of the prairies and the western lakes, the mighty masses of the Rockies with their towering, cloud enwrapped peaks, the magic lakes nestling among the foothills, the grandeurs of Banff and the great rivers of the newer provinces and British Columbia baffle description. Enough, however, has surely been said to show that this Canada of ours is really one vast summer resort, and the Canadian wherever he resides is within easy distance of some retreat affording rest, recreation and instruction in Nature's school.



HOTEL BELMONT, BRANTFORD, ONTARIO, is one of the most up to date Commercial Hotels in Western Ontario, being in a most pleasant and central location. Every room is well heated and supplied with hot and cold water. (For Rates, etc., see business card under "Guide to Canadian Hotels.")





AN OLD TOLL GATE. ON THE LONDON ROAD. BETWEEN LONDON AND ST. THOMAS. The road is owned by a private company, and is much travelled by the public.



SCENE IN WATERWORKS PARK ST. THOMAS. ONT.

Store Furniture  
Bank Furniture  
Office Furniture  
Show Cases

High Grade Fittings Our Specialty

**Dominion Office and Store Fitting Co., Limited**

Successors to London Show Case Works

**LONDON - CANADA**

—ESTABLISHED 1891—

**The Municipal World Limited**

MANUFACTURERS AND IMPORTERS OF

Calendars and	Counter Check Books,
Advertising Specialties	Trade Booklets.
Fans, Blotters, Yard	Canadian Agents for
Sticks, Rulers, Etc.	New Jersey
Catalogues, Blank Books,	Aluminum Co.

BOOK and JOB PRINTING and BINDING of  
every description

St. Thomas - Ontario

# Grand Central Hotel

THOS. DONLEY, PROPRIETOR  
A. CAMERON, MANAGER

322 TALBOT ST., ST. THOMAS, ONT.  
PHONE 89 LONG DISTANCE



## Theatrical Rates

THIRD FLOOR — \$1.25

FIRST FLOOR (Double, \$1.50  
Single, 2.00

SECOND FLOOR (Double, \$1.25  
Single, 1.50



Canadian Scenic Views and Guide Book



Farndale House, Lake Rosseau, Muskoka, Grand Trunk Railway System

One of the most delightfully situated summer hotels of the Muskoka district, and commanding a view over Lake Rosseau, which is unsurpassed in a region noted for its splendid scenery, is but a short distance by water from Port Carling, the busy centre of lake navigation, and the famous Indian camp grounds, both of which can also be readily reached by land in a charming twenty minute walk along a path-way winding through entrancing woodland scenery. The steamers of the Muskoka Navigation Co. make calls twice daily at the hotel wharf, and the post office is in the hotel building. Mr. Copo is the retail proprietor. (For rates, etc., see advt.)



## DOMINION HOUSE

Adjoining G.T.R., M.C.R. and P.M. depots

Remodeled

Hot Water Heated, Electric Lights and Bells, Telephone Long D. 548

JOHN J. COX, Prop.

London, Canada

## LONDON HOUSE

Phone 552 Long Distance  
Corner Dundas and Talbot  
Streets

J. P. EVANS, Proprietor

London, Ontario.

## THE CITY HOTEL

Remodeled  
Steam Heated,  
Electric Lights  
and Bells.

W.S. LASHBROOK, Prop.

Special attention paid  
to Commercial and  
Theatrical Trade

Telephone 72  
Long Distance

S.W. Corner Dun-  
das & Talbot Sts.

London, Ont.



First-class accommodation for the  
Travelling Public.

Winter Rates, \$1.00 per day

Fish Dinners a Specialty.  
Choice Wines, Liquors and Cigars.  
Summer Rates, \$1.50 per day

## HOTEL LONEY

Porter Meets All Boats and Trains

South-Western Traction Co's cars stop in front of hotel.

PORT STANLEY

Matt. Loney, Prop. and Mgr.

Canadian Scenic Views and Guide Book

Guide to Canadian Hotels

NOTE

Each edition of Canadian Scenic Views and Guide Book will contain Business Cards and Advertisements of First-Class Hotels only.

BRANTFORD

Hotel Belmont

133-137 Colborne St. Phone 104

W. Fraser, Proprietor  
Rates \$1.50 and \$2.00 per day.

New American Hotel

87 Dalhousie St. Phone 114

W. Fraser Scott, Manager  
Rates \$1.50 Per Day.

HAMILTON

Hotel Royal

R. R. Simpson & Co., Proprietors

Highest Standard of Cuisine and Service. Largest, Best Appointed and Most Centrally Located.

LONDON

The Tecumseh

Lately refitted and remodeled throughout. Headquarters for Commercial Travellers.

Rates \$2 and upwards per Day, American Plan.  
GEO. H. O'NEIL, PROP.

Dominion House

Adjoining G. T. R., M. C. R. and P. A. Depots

John J. Cox, Proprietor

LONDON, Continued

The City Hotel

W. S. LASHBROOK, PROP.  
Phone 72 L. D.

South-West Cor. Dundas and Talbot Sts.

London House

J. P. Evans, Prop.

Corner Dundas and Talbot Streets  
Phone 552 Long Distance

MUSKOKA

Ferndale House

Lake Rosseau, Muskoka, Ont.

Rates \$7 to \$10 per Week John Cope, Proprietor

PORT STANLEY

Hill Crest

150 feet above Lake Erie. Best meals and service. Orchestra and dances. Address all communications to Manager, Hill Crest, Port Stanley.

Hotel Loney

Matt. Loney, Proprietor and Manager

Winter Rates, \$1 per day. Summer Rates, \$1.50 per day.

ST. THOMAS

Grand Central Hotel

Thos. Oonley, Prop. A. Cameron, Manager  
322 Talbot St.

Phone 89 Long Distance

ST. THOMAS, Continued

Iroquois Hotel

Rates \$1.25 Per Day

BARNES & CO., Proprietors Phone 133

TORONTO

The Arlington

Cor. King and John Sts.

One block west of Toronto's New Theatre, "The Royal Alexandria."

Rossin House

CORNER KING AND YORK STS.

American Plan, \$2.00, \$2.50, \$3.00 per day. European Plan, \$1.00 per day. Dutch Grill Room in Connection. Fifty Rooms with Private Baths.

WOOSTOCK

Hotel Oxford

WOOSTOCK'S LEADING HOTEL

Rates \$2 to \$2.50

Chas. A. Pyne, Prop.

The New Dufferin

GEO. DOUGLAS, Proprietor

Peel Street, Corner Market

WINOSOR

British American Hotel

JOHN HARTNETT, Proprietor

Rates \$2.00

2 Sandwich Street East Phone 143

**SOLICITORS**  
For The Canada Agency Co., Limited

**Brantford, Ont.** .....

C. S. TAPSCOTT  
Barrister, Solicitor, Etc. 44 George St.

**Chatham, Ont.**.....

HOUSTON & STONE  
Barristers, Solicitors, Etc. King St.

**Guelph, Ont.**.....

W. E. BUCKINGHAM  
Barrister, Solicitor, Etc. Douglass St.

**Hamilton, Ont.**.....

KERR & THOMAS  
Barristers, Solicitors, Etc.

**London, Ont.**.....

T. H. LUSCOMBE  
Barrister, Solicitor, Etc.

**Montreal, Que.**.....

BROWN, SHARP & McMICHAEL  
Barristers, Solicitors, Etc. 164 St. James St.

**Parkhill, Ont.**.....

A. A. MACTAVISH  
Barrister, Solicitor, Etc.

*Our Solicitors*

*As Far as Procured Previous  
to This Edition.*

**OUR SOLICITORS**

Are gentlemen of good reputation, and with whom **our** **Subscribers** and the general public may with confidence entrust any legal business requiring attention, either local or at any point represented.

**REDUCE**

Your Book Accounts by using  
our Collecting System

**INCREASE**

Your Business by Advertising  
in our Guide Book

THE  
**Canada Agency Company**  
LIMITED

HEAD OFFICE:

LONDON, - CANADA

**SOLICITORS**  
For The Canada Agency Co., Limited

**Sarnia, Ont.**.....

A. A. MACTAVISH  
Barrister, Solicitor, Etc.

**Stratford, Ont.**.....

MAKINS & HANLEY  
Barristers, Solicitors, Etc. Albert St.

**St. Thomas, Ont.**.....

ROBINSON & GREEN  
Barristers, Solicitors, Etc. 358 Talbot St.

**Toronto, Ont.**.....

E. W. J. OWENS  
Barrister, Solicitor, Etc.  
Imperial Chambers. 32-34 Adelaide St. E.

**Winnipeg, Manitoba**.....

HUGGARD & McLAWS  
Barristers, Solicitors, Etc.  
Room 017 McIntyre Block

**Windsor, Ont.**.....

FLEMMING, DRAKE & SOULE  
Barristers, Solicitors, Etc. Flemming Bldg.

**Woodstock, Ont.**.....

CLIFFORD KEMP, B.A.  
Barrister, Solicitor, Etc. Post Office Bloc'.

