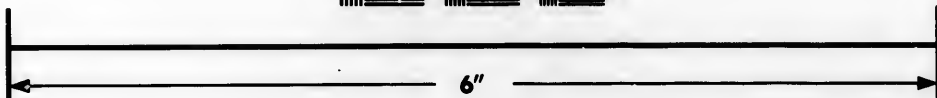
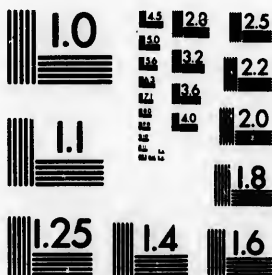


**IMAGE EVALUATION
TEST TARGET (MT-3)**



**Photographic
Sciences
Corporation**

23 WEST MAIN STREET
WEBSTER, N.Y. 14580
(716) 872-4503

1.5 1.8 2.0 2.2 2.5
2.8 3.2 3.6 4.0 4.5
5.0 5.6 6.3 7.1 8.0

**CIHM/ICMH
Microfiche
Series.**

**CIHM/ICMH
Collection de
microfiches.**



Canadian Institute for Historical Microreproductions / Institut canadien de microreproductions historiques

10
11
12
13
14
15
16
17
18
19
20

© 1983

Technical and Bibliographic Notes/Notes techniques et bibliographiques

The Institute has attempted to obtain the best original copy available for filming. Features of this copy which may be bibliographically unique, which may alter any of the images in the reproduction, or which may significantly change the usual method of filming, are checked below.

L'institut a microfilmé le meilleur exemplaire qu'il lui a été possible de se procurer. Les détails de cet exemplaire qui sont peut-être uniques du point de vue bibliographique, qui peuvent modifier une image reproduite, ou qui peuvent exiger une modification dans la méthode normale de filmage sont indiqués ci-dessous.

- Coloured covers/
Couverture de couleur
- Covers damaged/
Couverture endommagée
- Covers restored and/or laminated/
Couverture restaurée et/ou pelliculée
- Cover title missing/
Le titre de couverture manque
- Coloured maps/
Cartes géographiques en couleur
- Coloured ink (i.e. other than blue or black)/
Encre de couleur (i.e. autre que bleue ou noire)
- Coloured plates and/or illustrations/
Planches et/ou illustrations en couleur
- Bound with other material/
Relié avec d'autres documents
- Tight binding may cause shadows or distortion along interior margin/
La reliure serrée peut causer de l'ombre ou de la distorsion le long de la marge intérieure
- Blank leaves added during restoration may appear within the text. Whenever possible, these have been omitted from filming/
Il se peut que certaines pages blanches ajoutées lors d'une restauration apparaissent dans le texte, mais, lorsque cela était possible, ces pages n'ont pas été filmées.
- Additional comments:/
Commentaires supplémentaires:

- Coloured pages/
Pages de couleur
- Pages damaged/
Pages endommagées
- Pages restored and/or laminated/
Pages restaurées et/ou pelliculées
- Pages discoloured, stained or foxed/
Pages décolorées, tachetées ou piquées
- Pages detached/
Pages détachées
- Showthrough/
Transparence
- Quality of print varies/
Qualité inégale de l'impression
- Includes supplementary material/
Comprend du matériel supplémentaire
- Only edition available/
Seule édition disponible
- Pages wholly or partially obscured by errata slips, tissues, etc., have been refilmed to ensure the best possible image/
Les pages totalement ou partiellement obscurcies par un feuillet d'errata, une pelure, etc., ont été filmées à nouveau de façon à obtenir la meilleure image possible.

This item is filmed at the reduction ratio checked below/
Ce document est filmé au taux de réduction indiqué ci-dessous.

10X	12X	14X	16X	18X	20X	22X	24X	26X	28X	30X	32X
						✓					

The copy filmed here has been reproduced thanks to the generosity of:

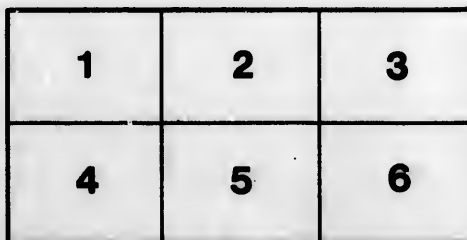
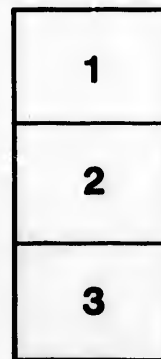
Library
Agriculture Canada

The images appearing here are the best quality possible considering the condition and legibility of the original copy and in keeping with the filming contract specifications.

Original copies in printed paper covers are filmed beginning with the front cover and ending on the last page with a printed or illustrated impression, or the back cover when appropriate. All other original copies are filmed beginning on the first page with a printed or illustrated impression, and ending on the last page with a printed or illustrated impression.

The last recorded frame on each microfiche shall contain the symbol \rightarrow (meaning "CONTINUED"), or the symbol ∇ (meaning "END"), whichever applies.

Maps, plates, charts, etc., may be filmed at different reduction ratios. Those too large to be entirely included in one exposure are filmed beginning in the upper left hand corner, left to right and top to bottom, as many frames as required. The following diagrams illustrate the method:



L'exemplaire filmé fut reproduit grâce à la générosité de:

Bibliothèque
Agriculture Canada

Les images suivantes ont été reproduites avec le plus grand soin, compte tenu de la condition et de la netteté de l'exemplaire filmé, et en conformité avec les conditions du contrat de filmage.

Les exemplaires originaux dont la couverture en papier est imprimée sont filmés en commençant par le premier plat et en terminant soit par la dernière page qui comporte une empreinte d'impression ou d'illustration, soit par le second plat, selon le cas. Tous les autres exemplaires originaux sont filmés en commençant par la première page qui comporte une empreinte d'impression ou d'illustration et en terminant par la dernière page qui comporte une telle empreinte.

Un des symboles suivants apparaîtra sur la dernière image de chaque microfiche, selon le cas: le symbole \rightarrow signifie "A SUIVRE", le symbole ∇ signifie "FIN".

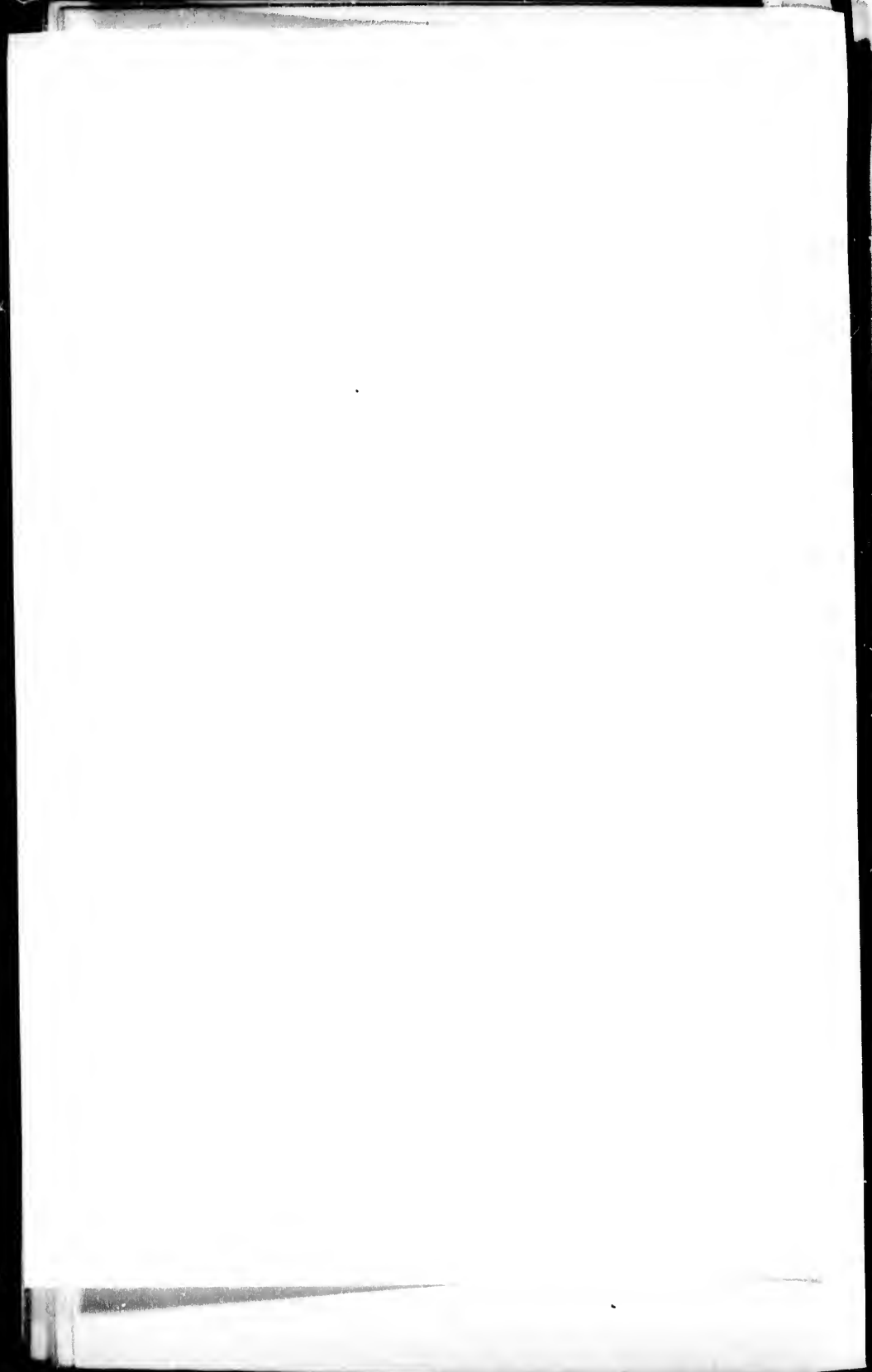
Les cartes, planches, tableaux, etc., peuvent être filmés à des taux de réduction différents. Lorsque le document est trop grand pour être reproduit en un seul cliché, il est filmé à partir de l'angle supérieur gauche, de gauche à droite, et de haut en bas, en prenant le nombre d'images nécessaire. Les diagrammes suivants illustrent la méthode.

ells
du
odifier
une
page

rrata
to

peiture,
n à

32X



t
i
n
r
c
e
l
a

n
n
a

X. Statistics and Distribution of North American Lichens

BY HENRY WILLEY, NEW BEDFORD, MASS.

[*Read before this Society, October 3d, 1873.*]

AN attempt at presenting the statistics and the geographical distribution of the Lichens of North America, must necessarily be imperfect, owing to the fact that but a small portion of the continent has been thoroughly explored in search of Lichens; so that new species may be expected to occur, even in the more familiar districts, while considerable accessions to our knowledge may be expected in those which have, as yet, been hardly visited by the Lichenist. The present attempt, therefore, is offered only as an approximation to exactness.

In my "List of North American Lichens" as known at the commencement of 1872, there were enumerated 808 species and subspecies, some being ranked as species, which will hereafter, probably, be reduced to varieties. The additions and corrections since made to that list (which are given in an Appendix to this paper) swell the total to 823, subject to the same reservation in regard to species and varieties. This estimate does not include a considerable number of species collected but not described or published; with the addition of these and other discoveries which may be made, the whole number of North American Lichens may finally reach between 850 and 900; the whole number of Lichens at present known and described being from 1,500 to 2,000, and of Lichens occurring in Europe, about 700. New species are being constantly published, but the title of many of them to rank as such may well be doubted, as it depends to a great extent, on minute chemical differences, as to the value of which Lichenists are not agreed.

Of the five Tribes into which Lichens are divided, according to the arrangement of Professor Tuckerman in his "Genera Lichenum,"

which is that followed in this paper, the Parmeliacei contain in North America, 38 Genera and 411 species; the Lecideacei, 10 Genera and 218 species; the Graphidacei, 11 Genera and 79 species; the Caliciacei, 3 Genera and 40 species; the Verrucariacei, 10 Genera and 75 species. Of the 18 families into which these five tribes are divided, the Usneei contain 7 Genera and 67 species; Parmelici, 5 Genera and 52 species; Umbilicariici, 1 Genus and 21 species; Peltigerei, 5 Genera and 38 species; Pannariei, 2 Genera and 27 species; Collemei, two sub-families, 7 Genera and 68 species; Lecanorei, three sub-families, 12 Genera (including Myriangium) and 412 species; Cladoniici, 3 Genera and 57 species; Coenogonii, 2 Genera and 3 species; Lecideei, three sub-families, 5 Genera and 217 species; Lecanactidei, 3 Genera and 8 species; Opegrapheci, 3 Genera and 31 species; Glyphydei, 2 Genera and 3 species; Arthoniici, 3 Genera and 79 species; Sphaerophorei, 3 Genera and 6 species; Caliciici, 3 Genera and 40 species; Endocarpei, 2 Genera and 10 species; Verrucariici, three sub-families, 8 Genera and 75 species.

The geographical distribution of the species is shown in the following table. In the first column is shown the number of species and sub-species in each genus; in that marked *N.*, the number of Northern species; *S.*, of Southern species, including the territory south of Pennsylvania, the Ohio river, and thence west to the Southern boundary of California; *G.*, species more or less widely distributed in both of these regions; *W.*, species occurring only west of the Mississippi, and north of the column indicated by *S.* (including also a few Arctic species as hereafter noted); *Alp.*, Alpine and sub-Alpine species; *Arc.*, Arctic species; *Tr.*, Tropical and sub-Tropical species; *N. Am.*, species peculiar to North America; *Eu.*, species occurring also in Europe; *N. E.*, species occurring in New England.

	No. Sp.	N.	S.	G.	W.	Alp.	Arc.	Tr.	N. Am.	Eu.	N. E.
I.											
1. Roccella,	2	1	1		1					1	
2. Ramalina,	24	10	12	2	0	1		10	10	5	3
3. Dactylina,	3	3			1	1	2		2	1	
4. Cetraria,	20	16		4	3	5	3		4	14	14
5. Evernia,	5	3	1	1	2	2		1		4	2
6. Usnea,	6	1		5			1			2	5
7. Alectoria,	6	4	1	1	1	3	3	1		6	3
8. Speerschneidera, ..	1		1					1	1		
9. Theloschistes,	3			3						3	3
10. Parmelia,	34	12	6	16	3	6	4	6	9	20	19
11. Physcia,	13	6	3	4	1			3	4	7	5
12. Pyxine,	1			1							1
13. Umbilicaria,	21	16		5	5	10	3		7	12	10
14. Sticta,	23	5	12	6				12	3	11	7
15. Nephroma,	4	1	1	2		1		1	1	3	3
16. Peltigera,	8	3	1	4		1		1		7	7
17. Erloderma,	1		1						1		
18. Solorina,	2	2					1			2	1
19. Heppia,	1			1						1	1
20. Pannaria,	23	11	5	10	2	1	3	3	7	16	16
21. Epebe,	3	1	1	1				1	2	1	2
22. Lichina,	1	1							1		1
23. Synelissa,	8	5	2	1				1	4	3	4
24. Omphalaria,	4	1	3					2	2	2	1
25. Collema,	28	11	5	12			1	3	13	18	11
26. Leptogium,	23	7	8	8	3			1	7	8	12
27. Hydrothyria,	1			1					1		1
28. Placodium,	28	16	3	9	10	4	5	3	13	15	10
29. Lecanora,	52	33	5	14	15	12	5	5	14	34	21
30. Rinodina,	12	8		4	1	2	2		4	7	7
31. Pertusaria,	18	9	2	7	1	1	5	2	5	11	7
32. Phlyctis,	1	1							1	1	
33. Conotrema,	1			1					1	1	1
34. Gyalecta,	9	5	1	3	1		1	1	2	7	7
35. Urceolaria,	2			2						2	2
36. Thelotrema,	14		12	2				12	4	2	2
37. Gyrostomum,	1		1					1			
38. Myriangium,	1			1						1	1
II.											
39. Stereocaulon,	14	8	5	1	1	5	1	5	5	5	7
40. Pilophorus,	1	1				1				1	1
41. Cladonia,	36	18	7	14		8	1	6	10	25	26
42. Coenogonium,	2		2					2			
43. Cystocoleus,	1		1					1			
44. Baecomyces,	6	2	2	2		2		1		5	4
45. Biatora,	67	39	10	18	12	6	10	10	13	47	35
46. Heterothecium, ...	10	2	0	2		1		6	1	4	3
47. Lecidea,	43	38		5	10	20	11		7	36	21
48. Buellia,	38	32		6	11	4	7		17	21	8

	No. Sp.	N.	S.	G.	W.	Alp.	Arc.	Tr.	N. Am.	Eu.	N. E.
III.											
49. Lecanactis,	2	1	1		1	1				2	1
50. Platygrapha,	4	2	2		1			2	2	1	1
51. Melaspilea,	2	1	1					1	2		1
52. Opegrapha,	12	3	5	4				3	6	4	7
53. Xylographa,	3	3				1			2	1	3
54. Graphis,	17	1	14	2				12	2	3	3
55. Chiodecton,	2		2					2			
56. Glyphis,	1		1					1			
57. Arthonia,	34	13	12	9	2	3	1	12	15	15	17
58. Mycoporum,	1			1							1
59. Agyrium,	1	1								1	1
IV.											
60. Siphula,	2	2			2		2		1	1	
61. Sphaerophorus,	3	3				3				3	2
62. Acrosocyphus,	1		1					1			
63. Acolium,	8	6	2		4	1		2	4	3	2
64. Calicium,	23	14	2	7	1	2		1	5	20	19
65. Coniocybe,	3	2		1					1	2	3
V.											
66. Endocarpon,	8	2	2	2	2	1			2	6	4
67. Normandina,	2	1		1						2	2
68. Segestria,	2	1	1					1		1	1
69. Staurothele,	4	3		1					3	1	2
70. Trypethellum,	9		8	1				8	2	2	1
71. Sagedia,	5	1	1	3				1	2	3	4
72. Verrucaria,	20	14		6		3		1	5	15	10
73. Pyrenula,	21	4	12	5			1	11	5	8	8
74. Pyrenastrum,	2		2					2	1		
75. Strigula,	2		2					2	1		
	823	410	190	222	103	112	75	171	236	363	399

An interesting feature of our Lichen Flora, is the fact that a number of species which occur in Europe, have as yet been found only in the western portion of North America, from Nebraska to the Pacific, only a few of which are connected with Europe through the intervening Arctic region, which are indicated in the following list:

- | | | |
|---|---|---|
| N. E.

1
1
1
7
3
3

17
1
1

2

2
10
3

4
2
1
2
1
4
10
8 | 1. <i>Dactylina madreporiformis</i> .
2. <i>Evernia divaricata</i> .
3. <i>E. vulpina</i> .
4. <i>Alectoria Fremontii</i> .
5. <i>Umbilicaria rugifera</i> .
6. <i>U. murina</i> .
7. <i>Solorina crocea</i> (Arctic).
8. <i>Leptogium albo-ciliatum</i> .
9. <i>L. scotinum</i> .
10. <i>L. palmatum</i> .
11. <i>Placodium fulgens</i> .
12. <i>P. callopismum</i> .
13. <i>P. variabile</i> .
14. <i>P. sinapispermum</i> (Arctic).
15. <i>P. fulvo-luteum</i> (Greenland).
16. <i>Lecanora crassa</i> (<i>or</i> <i>lentigera</i>).
17. <i>L. verrucosa</i> (Arctic).
18. <i>L. Schleicheri</i> .
19. <i>L. poliscypha</i> .
20. <i>L. rhagadiosa</i> .
21. <i>Rinodina aterrima</i> .
22. <i>Pertusaria bryonantha</i> (Arctic).
23. <i>P. dactylina</i> (Arctic).
24. <i>Gyalecta rhexoblephara</i> (Arctic).
25. <i>Biatora decipiens</i> .
26. <i>B. globifera</i> (Arctic). | 27. <i>B. globulosa</i> .
28. <i>B. cinnabarina</i> (Arctic).
29. <i>B. cuprea</i> (Arctic).
30. <i>B. castanea</i> (Arctic).
31. <i>B. quernoa</i> .
32. <i>B. erysibe</i> .
33. <i>E. artyta</i> .
34. <i>B. sphaeroides</i> .
35. <i>Lecidea mamillaris</i> .
36. <i>L. vesicularis</i> .
37. <i>L. vitellinaria</i> (Arctic).
38. <i>L. borealis</i> .
39. <i>L. turgidula</i> (Arctic).
40. <i>L. atro-brunnea</i> (Arctic).
41. <i>L. insularis</i> .
42. <i>L. caulescens</i> .
43. <i>L. epigaea</i> .
44. <i>L. badia</i> .
45. <i>Lecanactis abietina</i> (Arctic).
46. <i>Arthonia impollta</i> .
47. <i>Siphula ceratites</i> .
48. <i>Acolium tympanellum</i> .
49. <i>Endocarpon cinereum</i> ,
<i>v. cartilagineum</i> (Greenland).
50. <i>Phacopsis vulpina</i> . |
|---|---|---|

Of the relation of our Lichen Flora to that of Asia and Japan, I have little information. The following, originally published as American, have been found in the regions indicated.

<i>Cetraria Richardsonii</i>	Siberia.		<i>U. Muhlenbergii</i>	Siberia.
<i>C. chrysantha</i>	Japan.		<i>U. Pennsylvanica</i>	Asia; Japan.
<i>Umbilicaria rugifera</i>	Siberia.		<i>Collema leptaleum</i>	Japan.

Alectoria Fremontii, *Cetraria Oakesiana*, *Thelotrema subtile*, and *Conotrema urceolatum*, occur in Europe; *Usnea cavernosa*, in S. America and India; *U. angulata*, in S. America and New Zealand; *Ramalina reticulata*, in New Zealand; *Pannaria leucosticta*, in New Zealand; and *R. tenuis*, is cosmopolitan. These lists might doubtless be extended.

APPENDIX.

The following additions and corrections to my list of North American Lichens are here noted.

ADDITIONS.

- Evernia intensa*, Nyl., Flora, 1872..... Mexico.
Parmella criulita v. *eciliata*, Nyl., Flora, 1860..... Mexico.
P. praesignis, Nyl., Flora, 1872..... Mexico.
P. colpodes v. *crisulata*, Nyl., Syn. p. 404..... North America.
P. tiliacea v. *sublaevigata*, Nyl. (*P. sublaevigata* Nyl.)..... North America.
† *P. livida* Tayl., Nyl., Syn. 383..... New Orleans.
P. perforata v. *cetrata*, Nyl., Syn. p. 378..... New Orleans.
Physcia setosa (Nyl.), Syn. p. 420..... Mexico.
P. obscura v. *compacta*, Nyl., Syn. p. 428..... Arctic.
Umbilicaria cylindrica v. *Delisaei*, Nyl., Scand. p. 117..... Arctic.
Sticta pallida, Hook..... Mexico.
***Placodium murorum* v. *tegulares*, Fw..... New England.
P. arcticum (Kbr. Parerg. p. 63)..... Labrador.
**Lecanora caesio-alba*, Kbr..... New York.
L. cupressi, Nyl. Flora, 1872..... North America.
L. cinerea varr. ***lacustris*, Nyl. **Hoffmanni*, ib..... North America.
L. rhagadiosa, Ach..... Yellowstone.
Rinodina sophodes varr. ***atro-cinerea* (Nyl.) ***roboris* (Duf.) New England.
**R. aterrima* (Kremph.)..... California.
***Pertusaria leioplaca* v. *marginata*, Nyl., En. p. 336..... North America.
P. pustulata v. *schizostoma*, Nyl., ib. p. 336..... New England.
P. paradoxa, Linds., W. Greenland, p. 344..... Greenland.
Thelotrema postpositum (Nyl.), N. Gr. p. 552..... Louisiana.
Stereocaulon denudatum v. *caespitosulum*, Nyl., Syn. p. 247. New England.
S. strictum, Th. Fr. Ster. p. 42..... Mexico.
S. albicans, Th. Fr. Ster. p. 63 (*S. nanum* Ach. saltem pp.)... New England.
Cladonia uncialis v. *turgescens*, Schaer..... United States.
Heterothecium leptochellum, Tuck. (Nyl. Antill., p. 14).... Mexico.
H. chloritis (Tuck.), Nyl. N. Gr. p. 66..... Southern.
**Lecidea mamillaris* (Gouan)..... Yellowstone.
L. Campsteriana, Linds. l. c., p. 358..... Greenland.
L. Vahliana, Linds. ib., p. 358..... Greenland.
Buellia discoensis (Linds.), ib. p. 356..... Greenland.
B. Egediana (Linds.), ib. p. 330..... Greenland.
B. Groenlandica (Linds.), ib. p. 351..... Greenland.
B. insignis, Naeg., Linds. l. c., p. 355..... Greenland.

- B. papillata* v. *albo-cincta*, Th. Fr. Northwest.
Opegrapha subvulgata, Nyl., Flora, 1869. Mexico.
Graphis pruinosa (Eschw.), Nyl., N. Gr. p. 564 Mexico.
Sogestria mucula v. *granulata*, Nyl., Antill., p. 23 Mexico.
Verrucaria Campsteriana, Linds. l. c., p. 843 Greenland.
 [This and *V. tartaricola* Linds. are probably parasitic fungi.]
 § *Pyrenula subelliptica*, Tuck., Lea Cincinn. p. 47. Ohio.
Phacopsis vulpina, Tul. California.

Opegrapha antiqua, Lesq., in Hayden's Report, 1873, pp. 370, 418, is the only fossil Lichen as yet recorded on this Continent.

CORRECTIONS.

- Umbilicaria mammulata*, Ach. = *U. spodochroa*.
U. polyphylla v. *deusta* = *U. flocculosa* Hoffm.
Sticta crenulata, Del. = *S. Ravenelii* T. = *S. erosa* (Eschw.).
Pannaria Michneri, T. = *P. molybdaea* Pers. f.
Synallessa lignyota should be *S. fulginea* (Wahl.).
Lecanora coniza, T. = *L. subfusca*.
Urceolaria hybocarpa, T. = *L. subfusca*, f.
Stereocaulon chlorellum, T. is not a species, the specimens belonging to *Ramalina*.
Biatora leucoblephara, Nyl., perhaps does not differ from *B. tricholoma*, Mont.
Lecidea grossa, Pers. should be transferred to *Heterothecium*.
Arthonia pruinosa, Ach. = *A. impolita* (Ehrh.).
 Page 10, after No. 202, insert: 6. Spores muriform, plurilocular.

POSTSCRIPT.—Since these pages were sent to the printer, I have had the opportunity of examining the Lichens collected by Dr. Coulter, Botanist to the United States Exploring Expedition to Colorado, during the summer of 1873. Among them are three which are new to the United States, but occur in Europe, as follows:

1. *Solorina bispora*, Nyl.
2. *Lecanora calcarea* (L.), Smf., with an elegantly effigurate thallus.
3. *Endococcus erraticus* (Mass.), Nyl. Parasitic on *Placodium elegans*.

