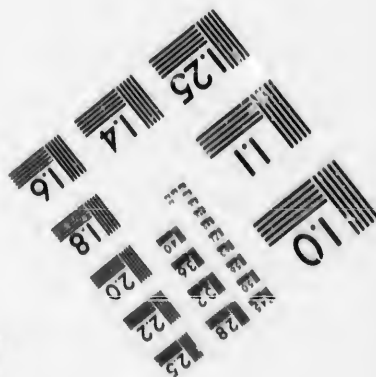
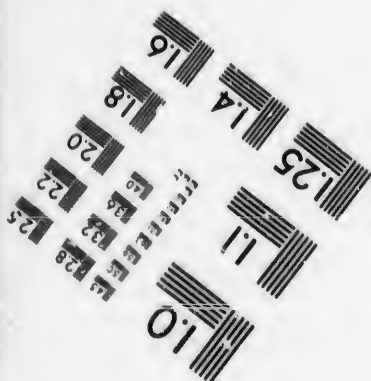
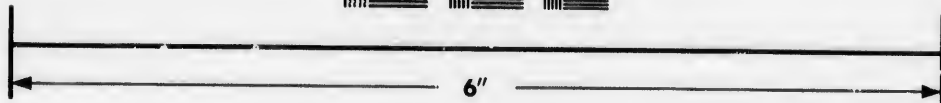
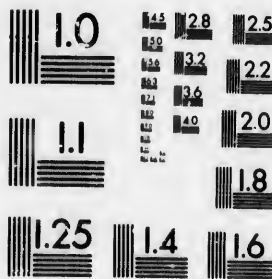


**IMAGE EVALUATION
TEST TARGET (MT-3)**



**Photographic
Sciences
Corporation**

23 WEST MAIN STREET
WEBSTER, N.Y. 14590
(716) 872-4503

25 28 25
32 25
36 22
40 20
18

**CIHM/ICMH
Microfiche
Series.**

**CIHM/ICMH
Collection de
microfiches.**



Canadian Institute for Historical Microreproductions / Institut canadien de microreproductions historiques

10

© 1987

Technical and Bibliographic Notes/Notes techniques et bibliographiques

The Institute has attempted to obtain the best original copy available for filming. Features of this copy which may be bibliographically unique, which may alter any of the images in the reproduction, or which may significantly change the usual method of filming, are checked below.

L'Institut a microfilmé le meilleur exemplaire qu'il lui a été possible de se procurer. Les détails de cet exemplaire qui sont peut-être uniques du point de vue bibliographique, qui peuvent modifier une image reproduite, ou qui peuvent exiger une modification dans la méthode normale de filmage sont indiqués ci-dessous.

- | | |
|--|--|
| <input checked="" type="checkbox"/> Coloured covers/
Couverture de couleur | <input type="checkbox"/> Coloured pages/
Pages de couleur |
| <input type="checkbox"/> Covers damaged/
Couverture endommagée | <input type="checkbox"/> Pages damaged/
Pages endommagées |
| <input type="checkbox"/> Covers restored and/or laminated/
Couverture restaurée et/ou pelliculée | <input type="checkbox"/> Pages restored and/or laminated/
Pages restaurées et/ou pelliculées |
| <input type="checkbox"/> Cover title missing/
Le titre de couverture manque | <input checked="" type="checkbox"/> Pages discoloured, stained or foxed/
Pages décolorées, tachetées ou piquées |
| <input checked="" type="checkbox"/> Coloured maps/
Cartes géographiques en couleur | <input type="checkbox"/> Pages detached/
Pages détachées |
| <input type="checkbox"/> Coloured ink (i.e. other than blue or black)/
Encre de couleur (i.e. autre que bleue ou noire) | <input checked="" type="checkbox"/> Showthrough/
Transparence |
| <input type="checkbox"/> Coloured plates and/or illustrations/
Planches et/ou illustrations en couleur | <input type="checkbox"/> Quality of print varies/
Qualité inégale de l'impression |
| <input type="checkbox"/> Bound with other material/
Relié avec d'autres documents | <input type="checkbox"/> Includes supplementary material/
Comprend du matériel supplémentaire |
| <input type="checkbox"/> Tight binding may cause shadows or distortion
along interior margin/
La reliure serrée peut causer de l'ombre ou de la
distorsion le long de la marge intérieure | <input type="checkbox"/> Only edition available/
Seule édition disponible |
| <input type="checkbox"/> Blank leaves added during restoration may
appear within the text. Whenever possible, these
have been omitted from filming/
Il se peut que certaines pages blanches ajoutées
lors d'une restauration apparaissent dans le texte,
mais, lorsque cela était possible, ces pages n'ont
pas été filmées. | <input type="checkbox"/> Pages wholly or partially obscured by errata
slips, tissues, etc., have been refilmed to
ensure the best possible image/
Les pages totalement ou partiellement
obscurcies par un feuillet d'errata, une pelure,
etc., ont été filmées à nouveau de façon à
obtenir la meilleure image possible. |
| <input type="checkbox"/> Additional comments:/
Commentaires supplémentaires: | |

This item is filmed at the reduction ratio checked below/
Ce document est filmé au taux de réduction indiqué ci-dessous.

10X	12X	14X	16X	18X	20X	22X	24X	26X	28X	30X	32X
						/					

The copy filmed here has been reproduced thanks to the generosity of:

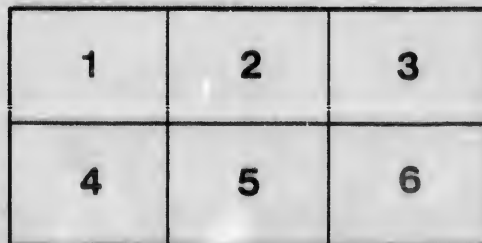
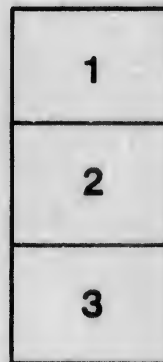
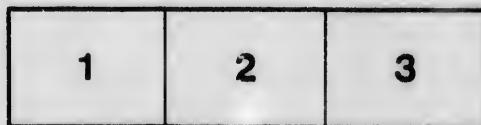
Seminary of Quebec
Library

The images appearing here are the best quality possible considering the condition and legibility of the original copy and in keeping with the filming contract specifications.

Original copies in printed paper covers are filmed beginning with the front cover and ending on the last page with a printed or illustrated impression, or the back cover when appropriate. All other original copies are filmed beginning on the first page with a printed or illustrated impression, and ending on the last page with a printed or illustrated impression.

The last recorded frame on each microfiche shall contain the symbol \rightarrow (meaning "CONTINUED"), or the symbol ∇ (meaning "END"), whichever applies.

Maps, plates, charts, etc., may be filmed at different reduction ratios. Those too large to be entirely included in one exposure are filmed beginning in the upper left hand corner, left to right and top to bottom, as many frames as required. The following diagrams illustrate the method:



L'exemplaire filmé fut reproduit grâce à la générosité de:

Séminaire de Québec
Bibliothèque

Les images suivantes ont été reproduites avec le plus grand soin, compte tenu de la condition et de la netteté de l'exemplaire filmé, et en conformité avec les conditions du contrat de filmage.

Les exemplaires originaux dont la couverture en papier est imprimée sont filmés en commençant par le premier plat et en terminant soit par la dernière page qui comporte une empreinte d'impression ou d'illustration, soit par le second plat, selon le cas. Tous les autres exemplaires originaux sont filmés en commençant par la première page qui comporte une empreinte d'impression ou d'illustration et en terminant par la dernière page qui comporte une telle empreinte.

Un des symboles suivants apparaîtra sur la dernière image de chaque microfiche, selon le cas: le symbole \rightarrow signifie "A SUIVRE", le symbole ∇ signifie "FIN".

Les cartes, planches, tableaux, etc., peuvent être filmés à des taux de réduction différents. Lorsque le document est trop grand pour être reproduit en un seul cliché, il est filmé à partir de l'angle supérieur gauche, de gauche à droite, et de haut en bas, en prenant le nombre d'images nécessaire. Les diagrammes suivants illustrent la méthode.

VICTORIA
BRITISH COLUMBIA
CANADA
THE HEAD QUARTERS
for
MINERS OUTRIG



For full information address
F. ELWORTHY, SECRETARY.

BRITISH COLUMBIA BOARD OF TRADE
VICTORIA, B.C.

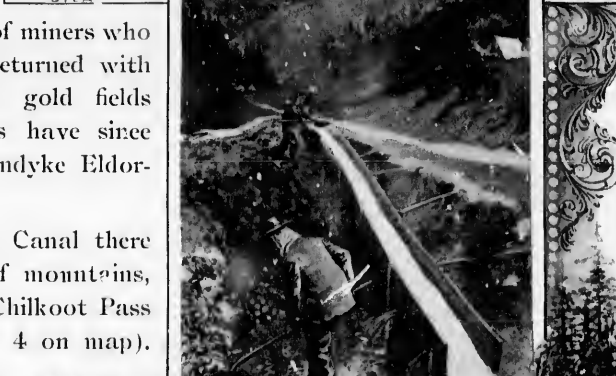
THE YUKON Gold District, in the Northwest Territories of Canada, is about 650 miles long, and the same gold belt continues south through British Columbia for another 750 miles, the most of which is unexplored.

KLONDYKE. The remarkably rich gold discoveries on the Klondyke River and Creeks which are tributaries of the Yukon were first reported to the Canadian Government last spring, and upon the arrival at Victoria of a large number of miners who had gone into the Klondyke poor and returned with fortunes in gold dust, a rush to the gold fields immediately commenced, and steamships have since been leaving Victoria *en route* for the Klondyke Eldorado every few days.

ROUTES. From the head of Lynn Canal there are three routes over the coast range of mountains, namely, *via* White Pass (No. 2 on map); Chilkoot Pass (No. 3 on map); and Chilkat Pass (No. 4 on map). The principal travel this year has been over the White Pass and Chilkoot Pass. Improved transportation facilities are now being provided so that by next spring it is expected that miners with their supplies will be able to travel in two or three days from Lynn Canal to the headwaters of the Yukon River.

Much of the travel next year will be *via* the Stickeen River and Teslin Lake route (No. 1 on map). There is a line of steamships between Victoria and Wrangel, mouth of the Stickeen River, where connection is made with steamers which transport passengers and freight to Telegraph Creek. The journey from Victoria to Telegraph Creek can be made comfortably in six days. There is good land travel between Telegraph Creek and Teslin Lake (120 miles). The country is open and undulating, and excellent grass abounds for pack animals the entire distance. The Dominion and British Columbia Governments are surveying with a view of locating a line of railway which it is expected will be under construction next spring. A steamer is being built on Teslin Lake and will be ready for the opening of lake navigation next May to carry passengers and freight to the Klondyke.

The Stickeen-Teslin Lake route *via* the Hootalinqua River on which rich diggings have been struck avoids the dangers and hardships which are experienced on the mountain passes and the White Horse and other rapids, on the routes *via* Lynn Canal.



T
as th
himse
ers in
prefer
Colum
tions
with

C
remen
and
able
Unite

O
the m
chase
tribu
at lo
Pacifi
most
Cassi
servic

T
Klon
north
St. M

F
ing p



The Stickeen-Teslin Lake route has another very great advantage as the prospector upon leaving the steamer at Telegraph Creek finds himself in the heart of a gold country practically unexplored. Many miners intend to prospect in the gold districts of Cassiar and preference to the Klondyke because they are in British Columbia where there are no royalties collected or reservations made. From Omineca two miners recently arrived with \$48,000 in gold dust.

CANADIAN DUTIES. It is important to remember that all supplies for the Klondyke and British Columbia Gold Fields are dutiable if purchased out of Canada, or in the United States.

OUTFITS AND PRICES. All supplies for the miner, prospector and trader can be purchased at Victoria, the Capital and main distributing point for the whole of British Columbia, at lower prices than at any other place on the Pacific Coast, besides which, the duty, 35%, on most goods, is saved. The Victoria merchants, from experience gained in Cariboo, Omineca and Cassiar outfitting, are specially qualified to advise parties going north for the first time the most serviceable goods for that country.

TRANSPORTATION. It is strongly recommended that miners and prospectors going to the Klondyke and British Columbia Gold Fields book direct to Victoria, which is the "key" to the northern country. A line of steamships sail from Victoria almost daily for Wrangel, Lynn Canal and St. Michael, and the steamships of all other lines call for freight and passengers at Victoria.

Book direct for Victoria and take advantage of the steamship "Cut Rates" which are sure to offer.

For the convenience of intending passengers and shippers arrangements are being made for securing passages and freight space in advance, at lowest rates, for any given date.

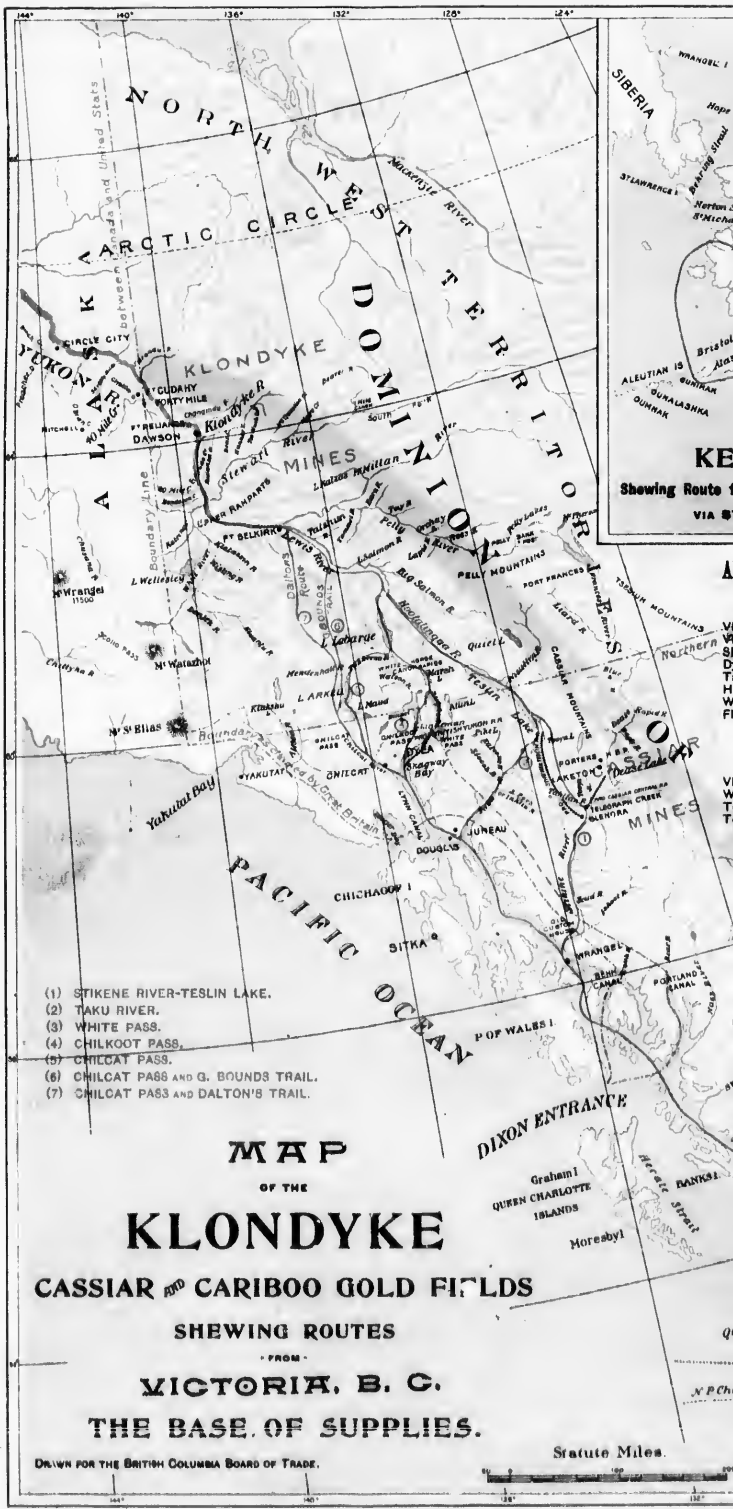
The steamers leaving Victoria are all high class boats. Their comfort and efficiency are acknowledged by the passengers travelling thereon by numerous testimonials published in the press.

CAUTION.—Many of the steamers for the Klondyke from other Pacific ports have during the past two months met with disasters as they were unseaworthy. Passengers avoid all risks by taking the Victoria steamers.



advantage
Creek finds
Many min-
Omineca in





- (1) STIKENE RIVER-TESLIN LAKE.
- (2) TAKU RIVER.
- (3) WHITE PASS.
- (4) CHILKOOT PASS.
- (5) CHILCAT PASS.
- (6) CHILCAT PASS AND G. BOUNDS TRAIL.
- (7) CHILCAT PASS AND DALTON'S TRAIL.

MAP
 OF THE
KLONDYKE
CASSIAR AND CARIBOO GOLD FIELDS
SHEWING ROUTES
 FROM
VICTORIA, B. C.
THE BASE OF SUPPLIES.

Drawn for the BRITISH COLUMBIA BOARD OF TRADE.

Statute Miles.



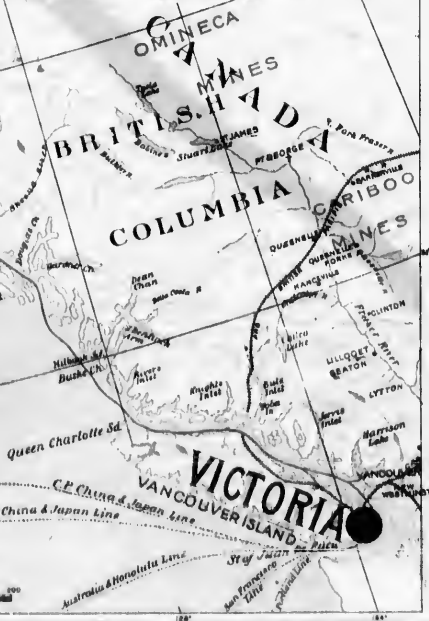
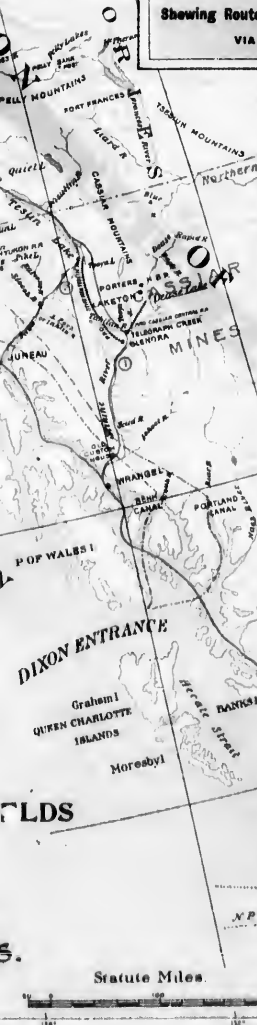


APPROXIMATE DISTANCES TO KLONDYKE GOLD FIELDS

	MILES VIA WHITE PASS	MILES VIA CHILKOOT PASS
VICTORIA to Skagway Bay (Ocean Steamship)	995	1000
VICTORIA to Dyea (Ocean Steamship)	- - -	- - -
Skagway Bay to Tagish Lake (pack trail and boat)	70	73
Dyea to Tagish Lake (pack trail and boat)	- - -	- - -
Tagish Lake to Head of Canon (boat)	50	50
Head of Canon to White Horse Rapids (portage)	2	2
White Horse Rapids to Five Finger Rapids (boat)	220	220
Five Finger Rapids to Dawson City (Klondyke)	230	230
Distance between Victoria and Klondyke Gold Fields, via Lynn Canal, about 1575 miles.		

	MILES
VICTORIA to Wrangel (Ocean Steamship)	750
Wrangel to Telegraph Creek (River Steamer)	150
Telegraph Creek to Tealin Lake (trail)	123
Tealin Lake to DAWSON CITY (Klondyke) (boat)	650
Total	1670 miles

VICTORIA to Dawson City (Klondyke) via St. Michael's, about 4425 miles.



219 Guides can. N^o 12

VICTORIA, B. C.

THE KEY

— TO THE —

Klondyke and Yukon

GOLD MINES.



THE QUICKEST ROUTE.

THE NEAREST ROUTE.

THE SAFEST ROUTE.

THE CHEAPEST ROUTE.

THE DUTY SAVING ROUTE.



REMEMBER



The Klondyke and Yukon Mines are
in Canadian Territory, and that all
Goods from the United States must
pay duty at Port of Entry.



YOU SAVE 30 PER CENT

BY BUYING YOUR SUPPLIES AT



VICTORIA,

BRITISH COLUMBIA.

AND

SHOWING
ROUTES
from
VICTORIA,
B.C.



FOR FULL INFORMATION

ADDRESS

F. ELWORTHY, SECRETARY.

BRITISH COLUMBIA BOARD OF TRADE
VICTORIA, B.C.

