

VA 1 MS A071
(Bw 027)

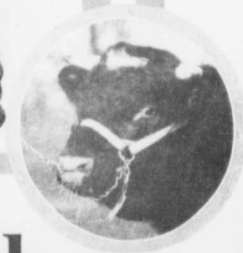


O P W F

REVIEW

1883-1919

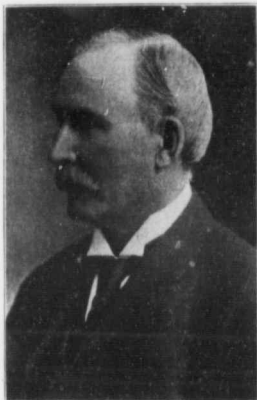
GUELPH



Dec. 8-9-10-11



HON. CHARLES DRURY,
Minister of Agriculture, 1888-1891.



HON. JOHN DRYDEN,
Minister of Agriculture, 1891-1905.



HON. NELSON MONTEITH,
Minister of Agriculture, 1905-1908.



HON. JAS. S. DUFF,
Minister of Agriculture, 1908-1916.



HON SIR WM. H. HEARST,
Minister of Agriculture, 1917-1918.



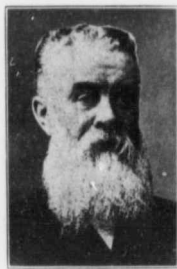
HON. GEO. S. HENRY,
Minister of Agriculture, 1918-1919.



HENRY WADE,
Secretary, 1883-1895.



WM. WHITELAW,
President, 1884.



JAS. MILLER,
Treasurer, 1884.
Vice-President, 1891.



ROBT. KIRBY,
Superintendent, 1884.

History of the Ontario Provincial Winter Fair

The history of the Ontario Provincial Winter Fair dates back to 1883, just thirty-seven years ago, when the first show, then called the "Annual Christmas Fat Stock Show," was held under the auspices of the Agriculture and Arts Association of Ontario and the Toronto Electoral District Agricultural Society, in the City of Toronto, December 14th and 15th. The management was under the following committee:—

Charles Drury, M.P.P.; John Carnegie, M.P.P.; George Moore; J. C. Snell, from the Agricultural and Arts Association; Andrew Smith, V.S.; Wm. Rennie; J. J. Withrow; J. E. Mitchell, from the Toronto Electoral Division Agricultural Society; A. Smith, Chairman; J. P. Edwards, Treasurer; and Henry Wade, Secretary. It may be interesting to note the expenditures of this show as taken from the financial statement:—

| | |
|--|------------|
| Paid judges and working expenses | \$95.05 |
| Band | 28.00 |
| Fitting building | 87.75 |
| Electric light | 47.00 |
| Printing and advertising | 205.88 |
| Prizes | 1,340.00 |
| | \$1,803.68 |

At that time prizes were awarded for the best essays on the Show. The following are extracts from these essays on the Show of 1883:—

"The Exhibition was held in the Commercial Hotel Stables, a very convenient place in many respects, being central, near the market, and suitable for the weighing of the many animals on exhibition. The stables were commodious, but ill-adapted for the purpose. On entering the building one was at once convinced of the fact that the Managers and Directors had made the best of the accommodation afforded them. The animals were arranged around the wall in good order, leaving a long passage up the centre for the convenience of visitors. This space was well bedded with shavings, making a soft carpet for the animals to stand on during the judging. The judging ring was rather small; the animals, when standing across it, took up nearly all the width, leaving the Judges scarcely room enough to get around, and still worse, leaving very

little room around the outside of the ring for the numerous visitors who were anxious to get a good view of the massive animals as they were brought into the ring."

Sales.

"Most of the cattle sold readily at good prices, some at extraordinary figures. Mutton was not much in demand, notwithstanding that Mr. Kelly slaughtered and dressed a fine two-year-old sheep, which was delicious-looking enough to tempt the palate of the most scrupulous. W. Ryan, Esq., purchased 'Riley' from John Norris for the sum of \$200, weight 2,350 pounds. Mr. Downing purchased Groff's Champion, 'Elmira,' and 'Waterloo' at 12½ cents per pound, but afterwards sold them again. Groff's 'Maid of Honour' was sold to G. F. Frankland for 12 cents per pound. Also 'Princess Louise' to R. R. Carker, Bowmanville, for 12 cents per pound. 'Punch' was sold to Mr. Hugh Kelly for 9 cents per pound. Thompson & Sons purchased 'Young Sherman,' 'Hopewell,' and 'Blossom' from Groff's herd at 9½ cents per pound. Twenty-two other animals of Groff's sold to Hugh Kelly for 6 cents per pound. Gibson's 'White Duke' was sold to G. F. Frankland for the sum of \$300. Russell's 'Fuschia Duchess' was sold for \$300 to Britton Bros. McQueen's bull, 'Duke of Athol,' was purchased by Mr. H. Kelly for the sum of \$200, to distribute among the poor for a Christmas dinner."

"In regard to the stables proper, not much could be expected of them; they were dark, requiring artificial light throughout the whole day, so preventing a very close inspection of the animals within them. However, as very few of the show animals were there, the new room being large enough for their accommodation, there was not much inconvenience felt. The worst feature about the arrangement was the insufficient space for a suitable ring for judging purposes. Although there were very few visitors for a city of Toronto's dimensions, yet there was great difficulty in getting animals in and out of the ring, and by the time six or seven head had reached the inside, there was a blockade there also. But such inconveniences are small matters, and no doubt ere another year has passed by, Toronto will be prepared to give the magnificent animals that flock to its second Christmas Show a more roomy reception."



J. C. SNELL,
President, 1887 and 1890.
Chairman, 1892-94.



HERBERT WRIGHT,
President, 1890, 1891
and 1895.



J. McCORKINDALE,
Treasurer, 1891.
Superintendent, 1896.



JOHN I. HOBSON,
President, 1896-1900.

"During the evenings the buildings were partially lighted by electric light. It is much to be regretted that the working of this was not carried on satisfactorily, as considerable inconvenience was felt by its going out several times, at inopportune moments."

Among the sheep exhibitors we notice such familiar names as J. Kely, Jr., Shakespeare; Geo. Hood, Guelph; J. Ruthford, Roseville; J. Dryden, M.P.P., Brooklin; Jas. G. Wright, Guelph.

The principal hog exhibitors were Joshua Sisley, Richmond Hill; Geo. Savage, Burnhamthorpe; Joseph Featherston and R. Dorsey & Son, Symmeville; and Wm. Harris, Toronto.

The finances of the 1883 Show were obtained from a grant of \$500 from each of the Agriculture and Arts Association and the Toronto Electoral Division Agricultural Society, with the understanding that each was to share alike in the profits or losses.

Following this, the Shows of successive years were held at Guelph, Woodstock, Guelph and Toronto.

In Guelph the event was held in the drill shed, and among the prominent men at the opening we notice these names among those on the platform:—

Mr. Wm. Whitelaw, President of the Guelph Fat Stock Club; Messrs. McKinnon, Snell, Moore, Shipley and Wade of the Agriculture and Arts Association; Hon. A. M. Ross, Commissioner of Agriculture; James Inn's, M.P.; James Laidlaw, M.P.P., and G. F. Frankland, of Toronto.

A very commendable feature of these early exhibits was a card showing the weight of the animals, age in days, and daily rate of increase. Messrs. H. & I. Groff, Elmira, had eleven head of cattle in 1884 on exhibit, among which was "Jumbo," a four-year-old weighing 3,200 pounds.

In 1887 the total amount paid in prizes amounted to only \$500.00, and the entries dropped to 81. As a result of this, the event was discontinued during 1888 and 1889, although in the latter year the Guelph Fat Stock Club held a show of their own, to which the Agricultural and Arts Association gave a grant of \$60.00.

In 1890 and 1891 the Show was again held in Guelph.

The advancement may be said to date from 1892 when the Dominion Sheep and Swine Breeders joined their forces with those previously operating the Show. From the minutes of a Joint Stock Show Committee meeting held on April 7th, 1892, with the following present:—

From the Council—President, N. Awrey, M.P.P., Binbrook; J. Sisson, Crown Hill; J. C. Snell, Edmonton; J. M. Simmons, Ivan; A. Rawlings, Forest; W. J. Westington, Plainville; Secretary, Henry Wade, Toronto.

From the Fat Stock Club—Prof. Shaw, Guelph; John I. Hobson, Mosborough; Jas. Anderson, Guelph.

From the Sheep Breeders' Association—F. W. Hodson, London; J. Jackson, Abingdon.

From the Swine Breeders' Association—President, J. C. Snell, Edmonton; S. Coxworth, Claremont.

The following is an extract:—

"After a short discussion as regards the Fat Stock Show, it was moved by Mr. Simmons, seconded by Mr. Rawlings, that the Agriculture and Arts Association agree to hold a Fat Stock Show in the City of Guelph in December next, in connection with the Local Fat Stock Club, the Sheep Breeders' Association and the Swine Breeders' Association, upon this basis: The Local Fat Stock Club and the City of Guelph to provide all the accommodation necessary to hold a creditable show; the Sheep Breeders' Association to provide \$300 or more towards the prizes, the Swine Breeders' Association \$300 or more, and the Agriculture and Arts Association \$1,000; that the Fat Stock Show Committee of the Agriculture and Arts Association, three representatives from the Fat Stock Club, and two from each of the Sheep and Swine Breeders' Associations, be the Committee of Management; the Agriculture and Arts Association to pay all expenses and to collect all receipts; in case all the prizes in the sheep and swine departments are not paid out, the proper proportion of such unpaid prizes be paid back to the two different Associations. Carried."

The entries rose from 81 the previous year to 171, and the prize money paid from \$325.00 to \$1,453.00.

It may be of interest to compare the prices obtained for fat cattle at this time with the prices that obtain to-day. The following is an extract from the report of the 1892 "Sales of Fat Cattle During the Show":—

"Francis Murdoch, a Shorthorn grade, which took the first prize, weighing close on 1,400, and 21 months old to Jas. Millar at 6c live weight. Stewart Bros. Eramosa two heifers at 5½c to A. Tait, London. They weighed 2,750 lbs. W. R. Elliott, Everton, sold his prize steer to S. Purdy, Toronto, at 6c, and his third prize cow at 5c to go to Toronto.



F. W. HODSON,
Secretary, 1896-1899.



MAJOR G. B. HOOD,
Associate Secretary, 1896.



D. C. HANMER,
Superintendent, 1897-1916.



J. H. SAUNDERS,
Assistant Superintendent,
1899-1916.
Superintendent, 1917-1919.

The Show of 1893 was held in the Victoria Rink, Guelph, on December 6th and 7th. The entries for this year more than doubled those of 1892, and the prize money paid was over \$2,000.00.

In 1895 the Dairymen's Association of Western Ontario joined the organization. This example was followed in 1896 by the Dominion Cattle Breeders' Association and the Dairymen's Association of Eastern Ontario, with the result that a new record of entries, 611, and prize money paid of \$3,491.00 was established.

The Dairy Department started in 1895 with an entry: 1 Shorthorn, 2 Ayrshire, 2 Holstein, 3 Grade cows. This was under the control of the Dairymen's Association of Western Ontario.

In 1896 the contributions to the prize list were as follows:—

The Dominion Cattle Breeders' Association, \$1,145; The Dominion Sheep Breeders' Association, \$1,149; The Dominion Swine Breeders' Association, \$977; The Dairymen's Association of Eastern and Western Ontario, \$50.00 each. This was supplemented by a number of special prizes obtained by the Secretary, Mr. F. W. Hodson. The Guelph Fat Stock Club provided accommodation. The Live Stock Associations were represented by: Cattle Breeders' Associations, Messrs. John I. Hobson, David McCrae and G. E. Day; Sheep Breeders' Association, Messrs. James Tolton, R. Gibson, D. G. Hanmer and F. W. Hodson; Swine Breeders' Association, Messrs. J. E. Brethour, G. B. Hood, J. C. Snell; the Dairymen's Association of Western Ontario, Messrs. A. F. McLaren, M.P., and J. W. Wheaton; the Dairymen's Association of Eastern Ontario, Messrs. R. G. Murphy and Henry Wade. These gentlemen formed the Board of Management, and met at the Ontario Agricultural College on June 25th. Deputations from Brantford and Guelph were present. After hearing these deputations, it was decided by a vote of six to four that the Show for 1896 be held in Guelph on December 8th, 9th and 10th.

In 1897 the Provincial Winter Show was held in Brantford, one week earlier than usual, the dates being November 30th, December 1st and 2nd. There was a marked increase in the Dairy Department, there being 58 entries. The Holstein, "Calamity Jane," owned by A. & G. Rice, Curries, carried off the Sweepstakes for the best cow exhibited.

The experiences gained by having the Show held in various cities proved clearly that if ample accommodation were to be provided, arrangements had to be made to have a permanent home for the event. This was acquired in 1900 when the present Winter Fair buildings were built.

Previous to the 1900 Show, arrangements for the amalgamation of the Provincial Fat Stock and Dairy Show and the Ontario Poultry Show were completed, and the new name, Ontario Provincial Winter Fair was adopted.

In 1904 a Seed Department was opened in the Fair.

In 1909, Ontario Horse Breeders joined in the management, and the exhibit of horses has now come to be a phenomenal success.

Although over \$50,000 was spent on an addition to the buildings in 1908, providing for expansion of the various departments and the addition of the horse stable, the space now available does not nearly meet the requirements of the Show.

The present agreement between the City of Guelph and the Ontario Provincial Winter Fair expires on November 1st, 1920. Let us hope that the city which has done so much for the live stock interests, and which has justified the hanging of the sign, "The Smithfield of Canada," away back in the eighties, still continues to hold the Show which has helped make Ontario's live stock famous, and which is now the greatest live stock show in Canada. This can only be done by providing suitable buildings and accommodation.



WILLIAM JOHNSON, Guelph.
Who has been in charge of the Winter Fair Buildings
since 1900.



A. P. WESTERVELT,
Secretary, 1900-1912.



A. W. SMITH,
President, 1901-1904.



G. W. CLEMONS,
Executive Committee,
1901-1905.



PROF. G. E. DAY,
Executive Committee,
1901-1906.

GUELPH FAT STOCK CLUB.

It will be noticed, when reading the history of the Ontario Provincial Winter Fair as given in the foregoing pages, that the Guelph Fat Stock Club took a very active part in its development. It may be of interest to note the Presidents and Secretaries of this Club from 1881 to 1900, when the Ontario Provincial Winter Fair was organized.

Year President
1881—M. Sweetnam
1882—Wm. Brown
1883—George Hood
1884—Wm. Whitelaw

Year President
1885—Robert Kirbey
1886—John Phin
1887—James Anderson
1888—James Taylor

Year President
1889—Thomas Waters
1890—Walter West
1891—James Millar
1892— do.
1893— do.
1894— do.

Year President
1895—James Millar
1896—Herbert Wright
1897— do.
1898—James Millar
1899— do.

Secretaries
James Millar
Adam Armstrong
I. W. Easton
John McCorkindale
J. M. Duff



JOHN KELLY, a veteran breeder and exhibitor.



DR. J. MILLS,
President O.A.C.,
1879-1904.



DR. G. C. CREELMAN,
President O.A.C.,
1904-1919.



ARTHUR JOHNSON,
Executive Committee,
1901-1904,
President, 1905-1907.



COL. ROBT. MCEWEN,
Executive Committee,
1905-1907,
President, 1908-1909.

LECTURES AT THE ONTARIO PROVINCIAL WINTER FAIR.

In looking over past records of the Ontario Provincial Winter Fair, we find lectures played a very important role in its development. The success of this feature may be said to date from 1896, when special efforts were put forward to have lectures, illustrated with pictures, or the living animal or the dressed carcass.

The popularity of the lectures grew beyond all expectations, and in 1901 the lecture room was enlarged to accommodate nearly twice as many people as it had in 1900. The primary object in this feature was education on a practical basis, such as to show live stock breeders just what is necessary in an animal to bring the highest price in the best markets, and also how to produce such animal by breeding and selection. This was facilitated greatly by the operation of the block test, so that placings of the living animals might be compared with placings in the carcass competition. Arrangements were provided for the bringing into the lecture room of the various carcasses in order that the judges might give their reasons for their placings, and in addition point out desirable or undesirable characteristics.

The lectures were very often arranged in series, so that co-relation would exist and that no duplication of effort would occur. To illustrate this, we might mention a series of lectures delivered on Bacon Hogs in 1901. F. W. Hodson, of Ottawa, gave an illustrated lecture on the "Desirable and Undesirable Points of the Bacon Hog." Prof. G. E. Day followed with "How to Select, Breed and Care for Such Animals," and lastly, an illustrated lecture on "The Sort of Carcass Required for Wiltshire Sides," by F. W. Hodson, J. W. Flavelle, C. F. Hodges, C. C. L. Wilson. A similar series of lectures was delivered on all other breeds of live stock. At other times, such as 1908, lectures on the cause, prevention and treatment of the common ailments of horses, cattle, sheep and swine were given. In 1909 the proper type to be sought in the various breeds of stock was emphasized. In 1915 we find a series of lectures delivered on marketing, markets and their requirements. Among the many notable men appearing on the programme we find such names as:

J. S. Woodward, Lockport, N.Y.
Prof. G. E. Day, Guelph, Ont.

Prof. John A. Craig, Ames, Iowa.
Prof. W. R. Graham, O.A.C., Guelph, Ont.
J. E. Brethour, Burford, Ont.
Prof. C. F. Curtis, Ames, Iowa.
Prof. H. H. Dean, O.A.C., Guelph, Ont.
F. W. Hodson, Ottawa, Ont.
Wm. Russell, Mgr. Beef Dept., Swift Co., Chicago, Ill.
J. H. Grenside, Ottawa, Ont.
C. C. James, Toronto, Ont.
Archibald MacNeilage, Glasgow, Scotland, well known to all stockmen as editor of the "Scottish Farmer."
W. S. Spark, Canterbury, England.
Prof. M. Cumming, Truro, N.S.
C. W. Bowman, Ingersoll, Ont.
Jos. E. Wing, Mechanicsburg, Ohio.
W. J. Bell, Angus, Ont.
W. E. Rice, Brigeton, N.Y.
G. H. Clark, Seed Commissioner, Ottawa, Ont.
Dr. C. A. Zavitz, O.A.C., Guelph, Ont.
L. H. Newman, Ottawa, Ont.
John Gosling, Kansas City.
D. Ward King, Maitland, Missouri.
John Bright, Myrtle, Ont.
Lt.-Col. Robt. McEwen, London, Ont.
Prof. F. C. Elford, Macdonald College, Que.
Prof. H. Barton, Macdonald College, Que.
H. S. Arkell, now Live Stock Commissioner for the Dominion.
Prof. S. F. Edwards, O.A.C., Guelph, Ont.
T. R. Arkell, Mgr. Canadian Co-operative Wool Growers', Ltd., Toronto, Ont.

It is much to be regretted that such a valuable feature of the Fair had to be eliminated for want of space, as the lecture room was taken out in 1914 to provide accommodation for live stock and poultry. In 1915, lectures were given in the City Hall, but the interest shown, when this feature was more or less separated from the Show itself, did not warrant its continuance. Consequently we must look back to those good old days when practical information was given in a practical way by practical men, and now console ourselves with the excellent luncheon and after dinner speeches provided by the Directors at the Royal Canadian Café.



JOHN BRIGHT,
Executive Committee,
1908-1909.
President, 1910-1911.



WM. McNEIL,
Executive Committee,
1901-1919.
President, 1912-1913.



J. E. RETTIE,
Assistant Secretary, 1912,
1913, 1914 and 1918.
Overseas, 1915-1917.



R. W. WADE,
Secretary, 1913-1919.

Prince of Wales Prize

The undersigned has the honor to report that in the year 1860 His Royal Highness the Prince of Wales placed at the disposal of the Board of Agriculture and Arts for Upper Canada the sum of \$800, desiring that it should be applied as prize money to promote the objects for which the Association was formed.

The Board accordingly decided permanently to invest this money and to devote the income derived therefrom to the payment of premium offered "for such objects as might from time to time be deemed suitable and advantageous by the Board."

The records of the Association show that this course has since been pursued, the money having been invested from time to time, and the interest devoted to the payment of what has been known as "The Prince of Wales' Prize."

In May, 1884, the said \$800 was loaned by the Association on mortgage on Toronto Island real estate, bearing interest till April 19th, 1895, at 7 per cent. per annum, at which time the rate was reduced to 6 per cent., said interest being regularly paid to the Association till 1896.

On the last day of January, 1896, the Agriculture and Arts Association was by statute dissolved (58 Vic., chap. 11, sec. 46, entitled "An Act to consolidate and amend the Agriculture and Arts Act"), and "all the property and effects, real and personal, of what nature and kind soever vested in the said Agriculture and Arts Association or in the Council of the said Association, or held in trust by the said Association or by the said Council for the purposes of the same," became, by section 47, "vested in Her Majesty for the public uses of the Province."

Since that time the following interest payments have been made:

| | |
|------------|---------|
| 1896 | \$48.00 |
| 1897 | 48.00 |
| | ----- |
| | \$96.00 |

On the first day of July, 1898, the mortgagee paid the principal into the hands of the Provincial Treasurer, together with the six months' interest due, amounting in all to \$824.

In February, 1898, a disbursement of \$48 was made for the Prince of Wales' Prize for the year 1897, thus leaving a balance of \$872 unexpended.

In order that the intentions of His Royal Highness may in future be carried out, the undersigned respectfully recommends that the said eight hundred and seventy-two (\$872) dollars be placed to the credit of the Consolidated Revenue Fund of the Province, and that out of the annual receipts of the Province the sum of fifty dollars be yearly set apart as a perpetual prize to be given for the improvement of live stock at such agricultural exhibitions and for such classes as may from time to time be determined by the Minister of Agriculture.

Copy of an Order-in-Council approved by His Honor the Lieutenant-Governor, the 23rd day of August, A.D. 1898:

Upon consideration of the report of the Honorable the Minister of Agriculture, dated 19th August, 1898, with reference to the grant of eight hundred dollars (\$800) by His Royal Highness the Prince of Wales to the Board of Agriculture and Arts for Upper Canada, for prize money, the Committee of Council advise that the sum of eight hundred and seventy-two dollars (\$872), being the unexpended balance of the said grant, be placed to the credit of the Consolidated Revenue Fund of the Province, and that out of the annual receipts of the Province the sum of fifty dollars (\$50) be yearly set apart as a perpetual prize to be given for the improvement of live stock, at such agricultural exhibitions and for such classes as may from time to time be determined by the Minister of Agriculture.

Certified.

(Signed) J. Lonsdale Capreol,
Assistant Clerk, Executive Council.

PRINCE OF WALES' PRIZES

| Year | Place | Awarded for | Amount |
|------|----------|-------------------------------------|---------|
| 1861 | London | Best Stallion for general purposes. | \$60.00 |
| 1862 | Toronto | Bull, any breed (Shorthorn) | 60.00 |
| 1863 | Kingston | Carriage Stallion | 60.00 |
| 1864 | Hamilton | Portable Steam Engine | 60.00 |
| 1865 | London | Bull, any breed (Shorthorn) | 60.00 |



W. M. SMITH, M.P.,
Executive Committee,
1909-1913.
President, 1914-1915.



W. W. BALLANTYNE,
Executive Committee,
1906-1915.
President, 1916-1917.
Hon. President, 1918-1919.



R. H. HARDING,
Executive Committee,
1914-1915.



J. E. BRETHOUR,
Executive Committee,
1916.

PRINCE OF WALES PRIZES (Continued).

| Year | Place | Awarded for | Amount | Year | Place | Awarded for | Amount | |
|------|-----------|---|---------|------|--------|--|---------|---------|
| 1866 | Toronto | Agricultural Stallion | \$60.00 | 1900 | Guelph | Best Dressed Carcass | \$50.00 | |
| 1867 | Kingston | Pen of Cotswold Sheep | 60.00 | 1901 | Guelph | 3 Best Carcasses (Swine) | 50.00 | |
| 1868 | Hamilton | Herd of Pure-bred Cattle | 60.00 | 1902 | Guelph | 3 Best Export Bacon Hogs | 50.00 | |
| 1869 | London | Herd of Durham Cattle | 60.00 | 1903 | Guelph | 3 Best Export Bacon Hogs | 50.00 | |
| 1870 | Toronto | Flock of Leicester Sheep | 60.00 | 1904 | Guelph | Dairy Cattle | 50.00 | |
| 1871 | Kingston | Shorthorn Bull and five of his calves | 60.00 | 1905 | Guelph | 2 Best Export Bacon Hogs | 50.00 | |
| 1872 | Hamilton | Flock of Cotswold Sheep | 60.00 | 1906 | Guelph | Pair Steers, suitable for export, 1st prize, \$35.00; 2nd, \$15.00. | 50.00 | |
| 1873 | London | Shorthorn Bull and five calves under one year | 60.00 | 1907 | Guelph | Best 2 Export Bacon Hogs | 50.00 | |
| 1874 | Toronto | Heavy Draught Stallion and three Mares | 60.00 | 1908 | Guelph | Sheep—Champion Wether Lamb, long wool; Champion Wether Lamb, short wool | 50.00 | |
| 1875 | Ottawa | Herd of Shorthorn Cattle, 1 Bull and 5 Females | 60.00 | 1909 | Guelph | Horses—Best 3 Pure-bred Draft Animals, 2 years or under, got by one sire | 50.00 | |
| 1876 | Hamilton | Flock of Cotswold Sheep | 60.00 | 1910 | Guelph | Best 2 Export Bacon Hogs, alive and dressed | 50.00 | |
| 1877 | London | Pen of Berkshire Swine | 60.00 | 1911 | Guelph | Grand Champion Beef Animal | 50.00 | |
| 1878 | Toronto | Could not trace result | | 1912 | Guelph | Grand Champion Beef Animal | 50.00 | |
| 1879 | Ottawa | Shorthorn Herd | 60.00 | 1913 | Guelph | 3 Cattle making highest scores in dairy test | 50.00 | |
| 1880 | Hamilton | Not traced | | 1914 | Guelph | Best Pen of 3 Lambs, pure-bred grade or cross | 50.00 | |
| 1881 | London | Flock of Southdown Sheep | 60.00 | 1915 | Guelph | Best Stallion and 2 Females, same breed, registered in exhibitors' name | 50.00 | |
| 1882 | Kingston | Best Three Fat Cattle for shipping purposes | 60.00 | 1916 | Guelph | Best Pair Bacon Hogs, alive and dressed; Best Pair Butcher Hogs, alive and dressed | 50.00 | |
| 1883 | Guelph | Shorthorn Herd | 60.00 | 1917 | Guelph | Best Group of 3 Beef Animals, bred and owned by exhibitor | 50.00 | |
| 1884 | Ottawa | Not traced | | 1918 | Guelph | Grade Dairy Cattle | 50.00 | |
| 1885 | London | Heavy Draught Stallion, any breed. | 50.00 | | | | | |
| 1886 | Guelph | Shorthorn Herd, 5 Females | 50.00 | | | | | |
| 1887 | Ottawa | Pen of Shropshire Sheep | 50.00 | | | | | |
| 1888 | Kingston | Berkshire Herd | 50.00 | | | | | |
| 1889 | London | Not traced | | | | | | |
| 1890 | Toronto | Clydesdale Mare | 50.00 | | | | | |
| 1891 | Toronto | Clydesdale Stallion | 50.00 | | | | | |
| 1892 | Toronto | Clydesdale Stallion | 50.00 | | | | | |
| 1893 | Toronto | Clydesdale Stallion | 50.00 | | | | | |
| 1894 | Toronto | Hackney Stallion | 50.00 | | | | | |
| 1895 | Toronto | Shire Stallion | 50.00 | | | | | |
| 1896 | Toronto | Thoroughbred Stallion | 50.00 | | | | | |
| 1897 | Brantford | Dairy Cow, under 36 months | 30.00 | | | | | |
| 1897 | Brantford | Dairy Cow, 36 months or over | 18.00 | | | | | |
| 1898 | Brantford | Two Export Bacon Hogs (Dressed), 1st prize, \$25; 2nd, \$15, 3rd, \$10.00 | | 1905 | | \$5,500 | 1912 | \$9,500 |
| 1898 | Brantford | Four Export Bacon Hogs, any breed or grade, 1st prize, \$45; 2nd, \$35; 3rd, \$25; 4th, \$20. | | 1906 | | 7,230 | 1913 | 9,500 |
| 1899 | London | Pen of 5 Pure-bred Lambs, Ewes and wethers, 1st prize, \$30.00; 2nd, \$20.00. | | 1907 | | 6,300 | 1914 | 9,500 |
| | | | | 1908 | | 6,300 | 1915 | 9,500 |
| | | | | 1909 | | 11,000 | 1916 | 9,500 |
| | | | | 1910 | | 9,500 | 1917 | 12,000 |
| | | | | 1911 | | 9,500 | 1918 | 17,000 |

GOVERNMENT GRANTS TO O.P.W.F.

The Provincial Government gave financial assistance to the Ontario Provincial Winter Fair in the form of a yearly grant, as indicated below. Previous to 1905 this assistance was given through the various Provincial Live Stock Associations.

| | | | |
|------|---------|------|---------|
| 1905 | \$5,500 | 1912 | \$9,500 |
| 1906 | 7,230 | 1913 | 9,500 |
| 1907 | 6,300 | 1914 | 9,500 |
| 1908 | 6,300 | 1915 | 9,500 |
| 1909 | 11,000 | 1916 | 9,500 |
| 1910 | 9,500 | 1917 | 12,000 |
| 1911 | 9,500 | 1918 | 17,000 |

The Dominion Government gave financial assistance to the Ontario Provincial Winter Fair, since 1915, in the form of a yearly grant of \$5,000.00



A. LEITCH,
Assistant Superintendent,
1916-1919.



J. M. GARDHOUSE,
Director, 1917.



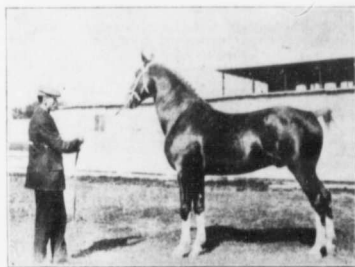
F. RICHARDSON,
Director, 1917.



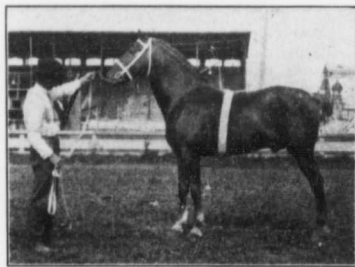
DR. J. HUGO REID,
Official Veterinarian since
1909.

HACKNEY CHAMPIONSHIPS.

| Year | Award | Name of Animal | Name of Owner |
|------|-------------------|-------------------------|-------------------|
| 1909 | Champion Stallion | "Brigham Radiant" | Graham & Renfrew |
| 1910 | Champion Stallion | "Derwent Performer" | G. H. Pickering |
| | Champion Mare | "Warwick Princess" | J. F. Husband |
| 1911 | Champion Stallion | "Blanch Surprise" | H. G. Boag |
| | Champion Mare | "Lochryan Princess" | E. B. Clancey |
| 1912 | Champion Stallion | "De Wilton" | John Semple |
| | Champion Mare | "Lochryan Princess" | E. R. Ricketts |
| 1913 | Champion Stallion | "De Wilton" | John Semple |
| | Champion Mare | "Lochryan Princess" | Dr. Grenside |
| 1914 | Champion Stallion | "Brookfield Laddie" | J. F. Husband |
| | Champion Mare | "Princess Winyard" | J. F. Husband |
| 1915 | Champion Stallion | "Prickwillow Connaught" | Crow & Murray |
| | Champion Mare | "Princess Winyard" | J. F. Husband |
| 1916 | Champion Stallion | "Prickwillow Connaught" | Crow & Murray |
| | Champion Mare | "Model's Queen" | Jos. Telfer |
| 1917 | Champion Stallion | "Spartan" | Jas. Tilt |
| | Champion Mare | "Model's Queen" | A. Shields & Sons |
| 1918 | Champion Stallion | "Spartan" | Jas. Tilt |
| | Champion Mare | "Model's Queen" | A. Shields & Sons |



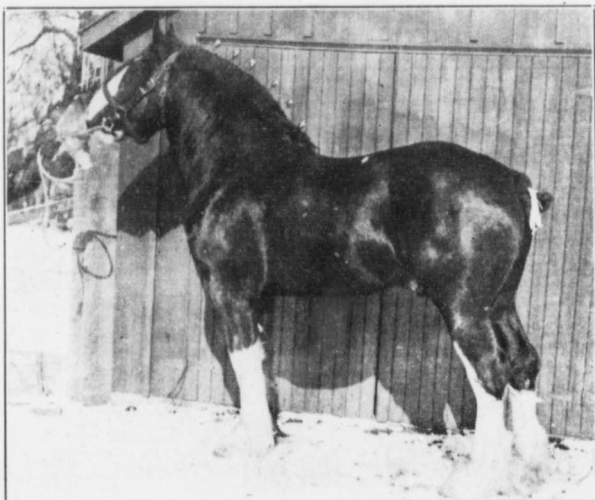
DE WILTON.



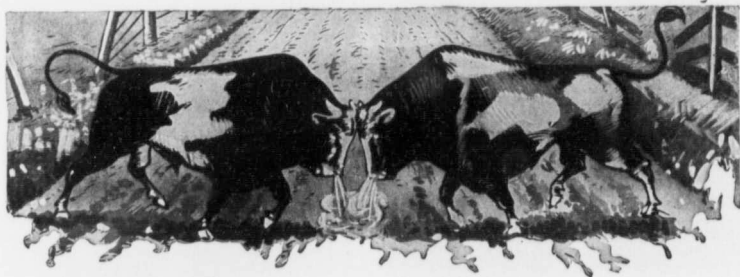
SPARTAN.

CHAMPIONSHIP CLYDESDALES.

| Year | Award | Name of Animal | Name of Owner |
|------|---|--------------------------|-----------------------|
| 1909 | Champion Stallion | "Cowden Prince" | Graham & Renfrew |
| | Champion Mare | "Queen Minnie" | Smith & Richardson |
| 1910 | Champion Stallion | "Sailor King (imp.)" | Graham & Renfrew |
| | Champion Mare | "Baroness Inech (imp.)" | Smith & Richardson |
| 1911 | Grand Champion Stallion | "Bydand" | Graham & Renfrew |
| | Grand-Champion Mare | "Iron Duchess" | Smith & Richardson |
| 1912 | Champion Stallion | "Macaroon" | T. H. Hassard |
| | Champion Mare and Best Clydesdale in Show | "Ruby Gay" | John Boag & Son |
| 1913 | Gr. Champion Stallion and Best Animal in Show | "Baron Ian" | John Boag & Son |
| | Champion Mare | "Nell of Arkton" | T. H. Hassard |
| | Champion Canadian-bred Stallion | "Glen Ivory" | Smith & Richardson |
| | Champion Canadian-bred Mare | "Princess Carruchan 2nd" | W. F. Batty |
| 1914 | Champion Stallion and Best Animal in Show | "Baron Ascot" | Graham Bros. |
| | Champion Female | "Bloomer" | Graham Bros. |
| | Champion Canadian-bred Stallion | "Ivory Joy" | Smith & Richardson |
| | Champion Canadian-bred Mare | "Charm" | George Miller |
| 1915 | Grand Champion Stallion | "Baron Ascot" | Graham Bros. |
| | Grand Champion Mare | "Royalette" | W. W. Hogg |
| | Champion Canadian-bred Stallion | "Randolph Romeo" | T. H. Hassard |
| | Champion Canadian-bred Mare | "Scotland's Charm" | Geo. Miller |
| 1916 | Champion Stallion | "Marathon" | T. H. Hassard |
| | Champion Mare | "Queenelda" | Sir H. M. Pellatt |
| | Champion Canadian-bred Stallion | "International" | Thos. McMichael & Son |
| | Champion Canadian-bred and Gr. Champion Mare | "Lady Bydand" | Sir H. M. Pellatt |
| 1917 | Champion Stallion | "Royal Favor" | Smith & Richardson |
| | Champion Mare | "Miss Hazel" | John Boag & Son |
| | Champion Canadian-bred Stallion | "Colonel Bowers" | McMichael & Son |
| | Champion Canadian-bred Mare | "Ivory's Margaret" | Smith & Richardson |
| 1918 | Champion Stallion | "Black Gregor" | John Boag & Son |
| | Champion Mare | "Blink of Fatcholds" | A. G. Gornley |
| | Champion Canadian-bred Stallion | "Dunure Model" | Robt. Cox & Sons |
| | Champion Canadian-bred Mare | "Heather Moon" | H. A. Mason |



BLACK GREGOR.



Bull Strength

Strength is the deciding factor in every walk of life.

The strength of your Tires is the deciding factor in making that long trip on rough roads—they will go the distance because they have bull strength.



Partridge Tires

are the outcome of thoughtful study and experimenting.

A Tire that Motorists can confidently depend on for service, reliability and economical performance.

Partridge Tires are made by the hands of men who know the requirements of a good Tire.

Made by

The F. E. PARTRIDGE RUBBER CO., Limited
GUELPH, ONT.





J. M. DUFF,
Banker for Winter Fair
since 1895.



J. W. BRANT,
Accountant, National Live
Stock Records.



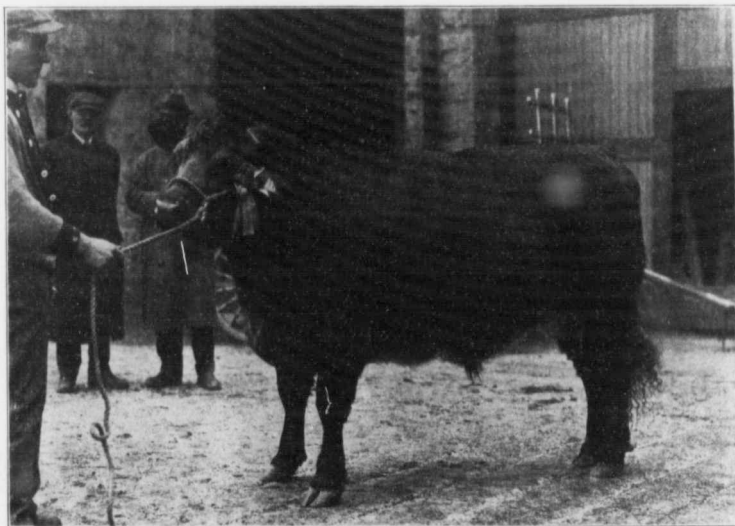
J. M. McCALLUM,
Ring-Master.



L. E. O'NEILL,
Assistant Secretary, 1919.

CHAMPIONSHIPS IN BEEF CATTLE.

| Show | Place | Class | Breed of winner | Weight | Owner and Address |
|------|-----------|---|-----------------|--------|------------------------|
| 1883 | Toronto | Best Steer or Spayed Heifer, any age or breed | Shorthorn | 2200 | H. & I. Groff, Elmira |
| | | Best Female, any age or breed | Shorthorn | 1920 | H. & I. Groff, Elmira |
| 1884 | Guelph | Best Steer, any age or breed | Short Grade | 1830 | H. & I. Groff, Elmira |
| | | Best Female, any age or breed | " " | 2380 | J. & R. McQueen, Salem |
| | | Grand Sweepstakes for any Fat Beast on grounds. | " " | 1830 | H. & I. Groff, Elmira |
| 1885 | Woodstock | Best Steer, any age or breed | " " | " " | H. & I. Groff, Elmira |
| | | Best Female, any age or breed | " " | " " | J. & R. McQueen, Salem |
| 1886 | Guelph | Best Steer, any age or breed | " " | 1960 | H. & I. Groff, Elmira |
| | | Best Female, any age or breed | " " | 1800 | H. & I. Groff, Elmira |



A GUELPH CHAMPION.



C. C. JAMES,
Deputy Minister Agriculture,
1891-1912.



W. B. ROADHOUSE,
Deputy Minister Agriculture,
1912-1919.



C. F. BAILEY,
Agricultural Commissioner.



DR. C. A. ZAVITZ,
O.A.C.

Championships in Beef Cattle (continued).

| Show | Place | Class | Breed of winner | Wght | Owner and Address |
|------|-----------|--|---------------------------------------|------|-------------------------------|
| 1887 | Toronto | Best Steer, any age or breed | Short Grade | 2159 | John Kelly, Jr., Shakespeare |
| | | Best Female, any age or breed | " " | 1592 | Geo. Keith, Elora |
| 1890 | Guelph | Best Steer, any age or breed | " " | | Jas. Oke & Son, Alvinston |
| | | Best Female, any age or breed | " " | | Jas. Oke & Son, Alvinston |
| 1891 | Guelph | Best Steer, any age or breed | " " | | Jas. Oke & Son, Alvinston |
| | | Best Female, any age or breed | " " | | Jas. Oke & Son, Alvinston |
| 1892 | Guelph | Best Fat Animal, any breed or sex | Shorthorn | | Adam A. Armstrong, Fergus |
| 1893 | Guelph | Best Fat Animal, any breed or sex | Short Grade | | Jas. Rennie, Wick |
| 1894 | Guelph | Best Fat Animal, any breed or sex | Shorthorn | | H. & W. Smith, Hay |
| 1895 | Guelph | Best Fat Animal, any breed or sex | Grade | | Jas. Rennie, Wick |
| 1896 | Guelph | Best Fat Animal, any breed or sex | Short Grade | | W. H. Nichols, Hamilton |
| 1897 | Brantford | For Best Animal shown in Cattle Dept. | Shorthorn | | H. & W. Smith, Hay |
| 1899 | London | For Best Animal shown in Cattle Dept. | | | H. & W. Smith, Hay |
| 1900 | Guelph | Best Animal, any age or breed | Grade | | Jas. Leask, Greenbank |
| 1901 | Guelph | Best Animal, any age or breed | Grade | | Jas. Leask, Greenbank |
| 1904 | Guelph | Grand Champion Beef Animal | | | J. Brown & Sons, Galt |
| 1905 | Guelph | Best Beef Animal | | | Jas. Rennie & Son, Blackwater |
| 1906 | Guelph | Grand Championship, Best Beef Animal | Shorthorn | | I. & A. Groff, Alma |
| 1907 | Guelph | Grand Champion Steer | Shorthorn | | John Brown & Sons, Galt |
| 1907 | Guelph | Grand Champion Female | Sh. "Flora 90th" | | Geo. Amos & Sons, Moffat |
| 1908 | Guelph | Gr. Champ. Best Steer, age, breed or cross | Angus X Short. "Black Hector" | | John Lowe, Elora |
| 1909 | Guelph | Grand Champion Beef Animal | Shorthorn. "Dun-robin Villager" | | Jas. Leask, Greenbank |
| 1910 | Guelph | Grand Champion Beef Animal | Shorthorn. "Roan James" | | Jas. Leask, Greenbank |
| 1911 | Guelph | Grand Champion Steer | Short Grade. "Joe Dandy" | | Jos. Stone, Sandfield |
| 1912 | Guelph | Grand Champion Beef Animal | Short Heifer. "Mischief" | | W. R. Elliott & Son, Guelph |
| 1912 | Guelph | Champion Steer | Short X Angus "Midnight" | | John Lowe, Elora |
| 1913 | Guelph | Champion of all breeds and crosses | Short Heifer. "Red Paul" | | Adam Armstrong, Fergus |
| 1914 | Guelph | Champ. Shorthorn Steer and Gr. Champ. of Show. | Shorthorn | | Pritchard Bros., Fergus |
| 1915 | Guelph | Grand Champion Steer | Angus, "Wee McGregor" | | J. D. McGregor, Brandon |
| 1916 | Guelph | Grand Champion Steer | Gr. Angus. "Blue King" | | Jas. Leask & Son, Seagrave |
| 1917 | Guelph | Grand Champion Steer | Gr. Angus. "Black George" | | Jas. Leask & Son, Seagrave |
| 1918 | Guelph | Grand Champion Steer | Gr. Shorthorn. "Clear the Way 2nd" | | T. A. Russell, Downsview |



J. LOCKIE WILSON,
In charge Field Crop
Competition.



A. MCKENNY,
Director, 1915-1918.



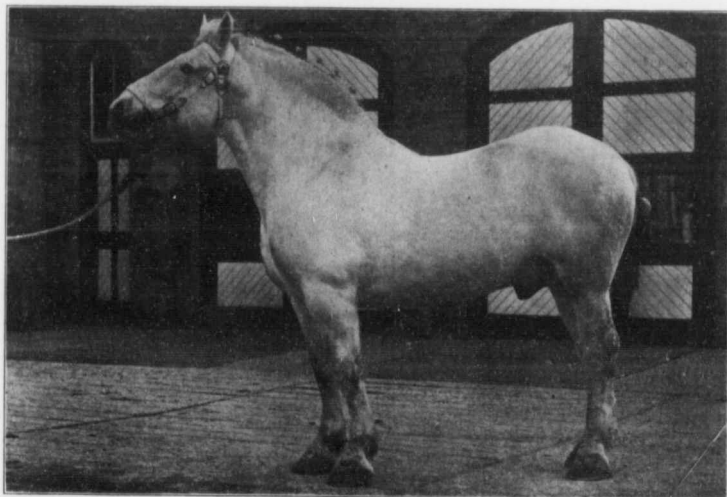
A. S. MAYNARD,
Director, 1917.



G. A. PUTNAM,
Superintendent, Women's
Institutes.
Director Dairy Branch.
Member Seed Committee.

PERCHERON CHAMPIONSHIPS.

| Year | Award | Name of Animal | Name of Owner |
|------|-------------------|-----------------|---------------------------------|
| 1912 | Champion Stallion | "Jonas" | T. H. Hassard, Markham |
| 1913 | Champion Stallion | "Lampyre" | T. D. Elliott, Bolton |
| 1914 | Champion Stallion | "Lenoir" | Hodgkinson & Tisdale, Beaverton |
| | Champion Mare | "Lacune" | J. B. Hogate, Weston |
| 1915 | Champion Stallion | "Ichnobate" | Hodgkinson & Tisdale, Beaverton |
| | Champion Mare | "Lacune (imp.)" | J. B. Hogate, Weston |
| 1916 | Champion Stallion | "Irade" | T. D. Elliott, Bolton |
| | Champion Mare | "Leste" | Hodgkinson & Tisdale, Beaverton |
| 1917 | Champion Stallion | "Lassis" | Herold & Ratz, Tavistock |
| | Champion Mare | "Leste" | Titus S. Shantz, Kitchener |
| 1918 | Champion Stallion | "Ecart 2nd" | T. H. Hassard, Markham |
| | Champion Mare | "Leste" | Titus S. Shantz, Kitchener |



IRADE.



W. J. SQUIRREL,
Director, 1918.



A. MASON,
Director, 1918.



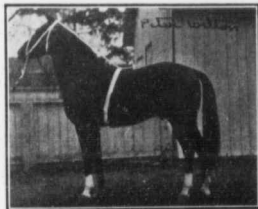
W. M. BARBER,
Director, 1916-1917.



G. G. HENDERSON,
Former Director and President
Ontario Poultry
Association.

STANDARD-BRED CHAMPIONSHIPS.

| Year | Award | Name of Animal | Name of Owner |
|------|-------------------|--------------------|----------------------------|
| 1909 | Champion Stallion | "Mograzia" | Miss K. L. Wilks, Galt |
| 1910 | Champion Stallion | "Mograzia" | Miss K. L. Wilks, Galt |
| | Champion Mare | "Moko Bird" | Miss K. L. Wilks, Galt |
| 1911 | Champion Stallion | "Mograzia" | Miss K. L. Wilks, Galt |
| | Champion Mare | "Paronella Todd" | Miss K. L. Wilks, Galt |
| 1912 | Champion Stallion | "Prince Ideal" | T. H. Hassard, Markham |
| | Champion Mare | "Paronella Todd" | Miss K. L. Wilks, Galt |
| 1913 | Champion Stallion | "Antevola Rysdyk" | S. A. Davitt, Burketon |
| | Champion Mare | "Nancy McKay" | Ira A. Maybee, Aymer |
| 1914 | Champion Stallion | "Jim Todd" | Cruikston Stock Farm, Galt |
| | Champion Mare | "Mary Regina" | Cruikston Stock Farm, Galt |
| 1915 | Champion Stallion | "Jim Todd" | Cruikston Stock Farm, Galt |
| | Champion Mare | "Brerette" | Crow & Murray, Toronto |
| 1916 | Champion Stallion | "Peter Wilton" | T. H. Hassard, Markham |
| | Champion Mare | "Ideal Princess" | Patterson Bros., Agincourt |
| 1917 | Champion Stallion | "Peter Wilton" | T. H. Hassard, Markham |
| | Champion Mare | "Juliett McKinney" | Samuel Hastings, Schomberg |
| 1918 | Champion Stallion | "Peter Wilton" | T. H. Hassard, Markham |
| | Champion Mare | "Cynthia McMartin" | Ashley Stock Farm, Foxboro |

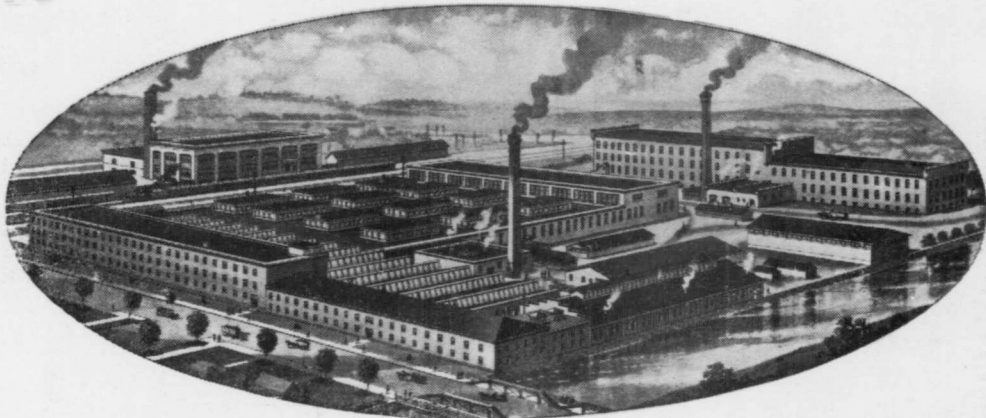


PETER WILTON



CONFIDENCE, World's Record, 7' 5½", at Olympia.

We are the most extensive manufacturers in the Dominion of Hosiery Yarns
for all classes of knitted garments



An ever-increasing number of people are feeling the lure of having good rugs, and are learning to appreciate the artistic qualities, decorative value and extreme durability of "Made in Canada" fabrics. Faithful reproductions of the Eastern art manufactured by us are to be seen in all the leading stores from coast to coast, where whatever you seek in rugs will be found, and you will be agreeably surprised at the prevailing low prices.

A good quality rug has ever been a source of luxurious home adornment.

"Stint yourself as you think good in other things; but don't scruple freedom in brightening the home. Gay furniture and cheerful decorations are a sight day by day, and make life blither."—Charles Buxton.

THE GUELPH CARPET & WORSTED SPINNING MILLS LIMITED,

GUELPH, ONT.

Made in Canada.

Summary of Statistics of the Provincial Fat Stock Show since 1883 to the present time

| Year | Place of Show | Entries | Prizes paid | Gate Receipts | Constitution of the Management. |
|------|---------------|---------|-------------|---------------|---|
| 1883 | Toronto | 134 | \$1,330.00 | \$176.90 | Agriculture & Arts Association & Toronto Electoral District Agricultural Society. |
| 1884 | Guelph | 144 | 1,020.00 | 235.63 | Agriculture & Arts Association & Guelph Fat Stock Club. |
| 1885 | Woodstock | 146 | 959.00 | 234.75 | Agriculture & Arts Association & County of Oxford Fat Stock Club. |
| 1886 | Guelph | 136 | 697.00 | 86.10 | Agriculture & Arts Association & Guelph Fat Stock Club. |
| 1887 | Toronto | 81 | 500.00 | 188.50 | Agriculture & Arts Association. |
| 1888 | | | | | |
| 1889 | | | | | |
| 1890 | Guelph | 114 | 632.00 | 56.25 | Agriculture & Arts Association & Guelph Fat Stock Club. |
| 1891 | Guelph | 81 | 325.00 | 68.75 | Agriculture & Arts Association & Guelph Fat Stock Club. |
| 1892 | Guelph | 171 | 1,453.00 | 203.25 | Agriculture & Arts Association, Sheep & Swine Breeders' Associations & Guelph Fat Stock Club. |
| 1893 | Guelph | 362 | 2,083.00 | 177.45 | do. do. do. do. |
| 1894 | Guelph | 487 | 2,525.00 | 169.95 | Agriculture & Arts Association, Sheep & Swine Breeders' Ass'ns., Guelph Fat Stock Club & Dairymen's Ass'n. |
| 1895 | Guelph | 463 | 2,628.00 | 192.75 | Dominion Cattle, Sheep & Swine Breeders' Ass'ns, Dairy Ass'n & Guelph Fat Stock Club. |
| 1896 | Guelph | 611 | 3,491.00 | 256.90 | Dominion Cattle, Sheep & Swine Breeders' Ass'ns, Cheese & Butter Ass'n of Eastern & Western Ontario, Brantford City Council, Southern Fair Board and Brantford Board of Trade. |
| 1897 | Brantford | 764 | 3,923.50 | 566.40 | do. do. do. do. |
| 1898 | Brantford | 750 | | | Dominion Cattle, Sheep and Swine Breeders' Ass'ns, Cheese & Butter Ass'n of Eastern Ontario, Western Fair Ass'n, London Board of Trade, Middlesex County Council & London City Council. |
| 1899 | London | 757 | | | Dominion Cattle, Sheep & Swine Breeders' Ass'ns, Western Ont. Poultry Ass'n & Dairymen's Ass'n. of Eastern Ontario. |
| 1900 | Guelph | 4,756 | 5,748.33 | | do. do. do. do. |
| 1901 | Guelph | 5,419 | 6,432.75 | | do. do. do. do. |
| 1902 | Guelph | 5,973 | 5,182.95 | 603.95 | Dominion Cattle, Sheep & Swine Breeders' Ass'ns & Western Ontario Poultry Ass'n. |
| 1903 | Guelph | 5,996 | 7,131.75 | 1,998.25 | do. do. do. do. |
| 1904 | Guelph | 4,319 | 7,299.50 | 1,843.10 | do. do. do. do. |
| 1905 | Guelph | 5,017 | 7,739.75 | 2,105.70 | do. do. do. do. |
| 1906 | Guelph | 5,158 | 8,006.00 | 1,952.35 | do. do. do. do. |
| 1907 | Guelph | 5,324 | 8,467.00 | 2,002.60 | do. do. do. do. |
| 1908 | Guelph | 5,443 | 11,987.25 | 1,761.60 | Ontario Horse, Dominion Cattle, Sheep & Swine Breeders' Ass'ns & Western Ontario Poultry Ass'n. |
| 1909 | Guelph | 6,260 | 12,040.25 | 2,874.95 | do. do. do. do. |
| 1910 | Guelph | 6,790 | 12,342.00 | 3,837.80 | Ontario Horse, Dominion Cattle, Sheep & Swine Breeders' Ass'ns, Western Ontario Poultry Ass'n & Ontario Seed Growers Ass'n. |
| 1911 | Guelph | 6,734 | 11,924.50 | 3,938.80 | do. do. do. do. |
| 1912 | Guelph | 5,997 | 12,234.25 | 3,689.50 | do. do. do. do. |
| 1913 | Guelph | 6,491 | 13,926.75 | 4,622.40 | do. do. do. do. |
| 1914 | Guelph | 6,538 | 15,543.75 | 4,219.40 | do. do. do. do. |
| 1915 | Guelph | 7,871 | 20,337.75 | 4,363.00 | do. do. do. do. |
| 1916 | Guelph | 7,406 | 18,881.25 | 4,504.00 | do. do. do. do. |
| 1917 | Guelph | 8,028 | 21,290.50 | 4,959.45 | do. do. do. do. |
| 1918 | Guelph | 8,747 | 24,025.75 | 2,769.70 | Ontario Horse, Cattle, Sheep and Swine Breeders' Ass'ns, Ontario Poultry Ass'n and Ontario Seed Growers' Ass'n. |

* Includes proceeds from sale of catalogues.

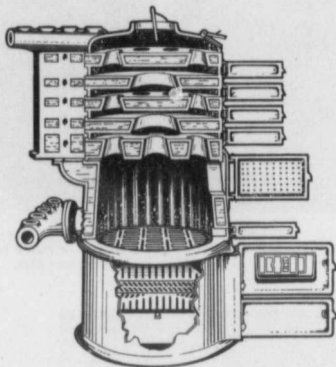
The present Ontario Provincial Winter Fair is under the management of twenty-four directors appointed by the Provincial Live Stock, Poultry and Seed Growers' Associations at their annual meetings.

The present directorate is as follows:

| Name of Director | Provincial Association Represented | Name of Director | Provincial Association Represented |
|------------------|-------------------------------------|------------------|--------------------------------------|
| John A. Boag | Ontario Horse Breeders' Association | W. A. Dryden | Ontario Cattle Breeders' Association |
| Peter Christie | do. do. | John Gardhouse | do. do. |
| T. H. Hassard | do. do. | John McKee | do. do. |
| H. M. Robinson | do. do. | R. S. Stevenson | do. do. |
| James Douglas | Ontario Sheep Breeders' Association | J. D. Brien | Ontario Swine Breeders' Association |
| John Kelly | do. do. | John I. Flatt | do. do. |
| George Telfer | do. do. | Wm. Jones | do. do. |
| W. Whitelaw | do. do. | P. J. McEwen | do. do. |
| Wm. McNeil | Ontario Poultry Association | W. J. W. Lennox | Ontario Seed Growers' Association |
| J. H. Saunders | do. do. | A. McMeans | do. do. |
| W. W. Simpson | do. do. | R. E. Mortimer | do. do. |
| A. W. Tyson | do. do. | T. G. Raynor | do. do. |

In addition to the above, the Minister and Deputy Minister of Agriculture for Ontario, by virtue of their offices, are also directors.

From the twenty-four directors, there is appointed a President and a Committee of nine, who, with the Secretary, form the Executive Committee.



A Post Card will bring The "Sovereign" Facts and Figures

Write us to-day. You will be interested. The facts are that the "Sovereign" gives a uniformly high average of satisfaction wherever installed, and the figures give equal satisfaction to the Engineer.

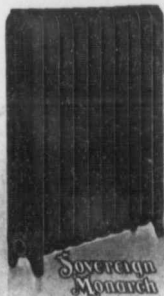
People everywhere are counting the coal cost of heating. That is where the "Sovereign" makes a strong appeal. It is built to save waste in every detail of design. The "Sovereign" is the most convincing Hot Water Boiler on the market. Its performance is always well up to the best expectations.

Sovereign Radiators

Facts and Features About Their Superiority.

Sovereign Radiators are built for service. They are made in a variety of sizes and attractive designs, conveniently suited to meet the demands of the area to be heated. Sovereign Radiators have absolutely tight and unleakable joints, large smooth connections, ensuring an easy flow and regular distribution of Water and Steam, and having a large heating surface, they supply the fullest warmth-distributing capacity. That is part evidence that should go far towards convincing you that at all times you should specify and install Sovereign Radiators (with the Sovereign Boiler) for your own as well as your customers' interests.

We have an abundance of literature for your own information. Consult us about your particular requirements; we are always ready and willing to help you.



TAYLOR-FORBES COMPANY, LIMITED

General Offices

Taylor Forbes Branches—
Toronto, 1066-1088 King St. W.
Montreal, 246 Craig St. W.
Hamilton, 92 Delaware Ave.
Vancouver, 1070 Homer St.

GUELPH. ONT.

Taylor Forbes Agents—

Halifax—Guildford & Sons, Ltd.
St. John—W. H. Campbell
Quebec—Mechanics Supply Co.
Ottawa—Gerald Watkinson, 116 Flora St.
Winnipeg—Vulcan Iron Works.
Calgary—R. H. Scott.
Regina, Sask.—Engineers' and Plumbers' Supply Co.

Works and Foundries



PROF. W. R. GRAHAM,
O.A.C.
Director, 1917.
Chairman Dressed Poultry.



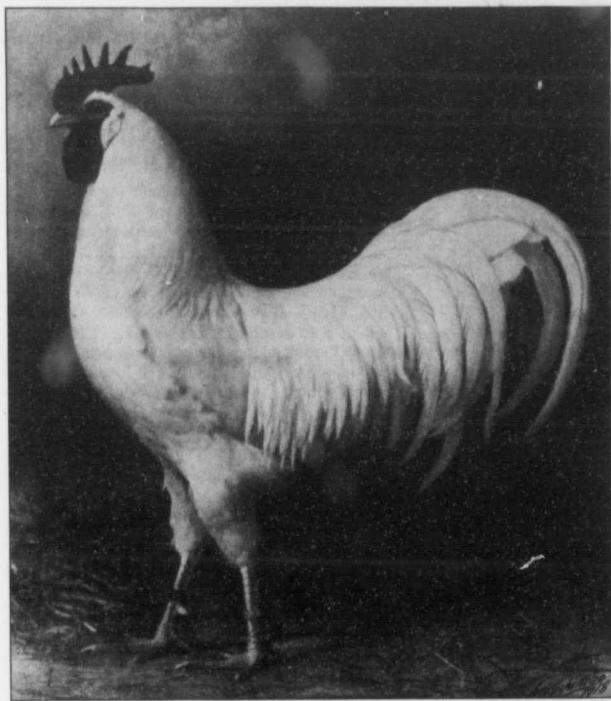
GEO. ROBERTSON,
Ottawa.



R. OKE,
London.



PROF. H. H. DEAN,
In charge of Dairy Test
since inception.



S.C. White Leghorn Cockerel, winner of Cup for Best Bird in Show, 1917. Owned by
Walter Rose, Brussels, Ont.



JOHN I. FLATT,
President, 1918-1919.



J. D. BRIEN,
Director,
Chairman, Swine Com-
mittee.



P. J. McEWEN,
Director.

THOROUGHBRED CHAMPIONSHIPS.

| Year | Award | Name of Animal | Name of Owner |
|------|-------------------|-------------------|------------------------------|
| 1909 | Champion Stallion | "Halfling" | Paterson Bros., East Toronto |
| 1910 | Champion Stallion | "Nasbaden" | Thayer Bros., Aylmer |
| 1911 | Champion Stallion | "Nasbaden" | Thayer Bros., Aylmer |
| 1912 | Champion Stallion | "Nasbaden" | Thayer Bros., Aylmer |
| 1913 | Champion Stallion | "Nasbaden" | Roland Thayer, Aylmer |
| 1914 | Champion Stallion | "Joe Nealon" | James Bovaird, Brampton |
| 1915 | Champion Stallion | "Master Fox" | E. B. Clancey, Guelph |
| | Champion Mare | "Carrillon" | E. B. Clancey, Guelph |
| 1916 | Champion Stallion | "Rosturtium" | James Bovaird, Brampton |
| | Champion Mare | "Carrillon" | E. B. Clancey, Guelph |
| 1917 | Champion Stallion | "Charlie Gilbert" | E. B. Clancey, Guelph |
| | Champion Mare | "Queen Sain" | E. B. Clancey, Guelph |
| 1918 | Champion Stallion | "Rosturtium" | James Bovaird, Brampton |
| | Champion Mare | "Queen Sain" | E. B. Clancey, Guelph |

SHIRE CHAMPIONSHIPS.

| Year | Award | Name of Animal | Name of Owner |
|------|-------------------|-------------------------|-------------------------------|
| 1909 | Champion Stallion | "Royal King 3rd" | John Gardhouse & Sons, Weston |
| | Champion Mare | "Bluebell" | J. M. Gardhouse, Weston |
| 1910 | Champion Stallion | "Tuttlebrook King" | John Gardhouse & Sons, Weston |
| | Champion Mare | "Kitchener's Topsy" | Porter Bros., Appleby |
| 1911 | Champion Stallion | "Tuttlebrook King" | John Gardhouse & Sons, Weston |
| | Champion Mare | "Tuttlebrook Sunflower" | Porter Bros., Appleby |
| 1912 | Champion Stallion | "Dunsmore Proctor" | J. M. Gardhouse, Weston |
| | Champion Mare | "Tuttlebrook Belle" | J. M. Gardhouse, Weston |
| 1913 | Champion Stallion | "Tuttlebrook Esquire" | John Gardhouse & Sons, Weston |
| | Champion Mare | "Rokeby Halo" | J. M. Gardhouse, Weston |
| 1914 | Champion Stallion | "King Junior" | Johnson Bros., Croton |
| | Champion Mare | "Hattie Kitchener" | John Gardhouse & Sons, Weston |
| 1915 | Champion Stallion | "Dunsmore Nateby" | J. M. Gardhouse, Weston |
| | Champion Mare | "Rokeby Halo" | J. M. Gardhouse, Weston |
| 1916 | Champion Stallion | "King Junior" | Johnson Bros., Croton |
| | Champion Mare | "Dewstow Fuchsia" | Johnson Bros., Croton |
| 1917 | Champion Stallion | "Croton Forest King" | John Gardhouse & Sons, Weston |
| | Champion Mare | "Tuttlebrook Sunshine" | G. E. Morden & Son, Oakville |
| 1918 | Champion Stallion | "Croton Forest King" | John Gardhouse & Sons, Weston |
| | Champion Mare | "Miss Proctor" | J. M. Gardhouse, Weston |



JOHN GARDHOUSE,
Vice-President.
Chairman, Beef Classes.



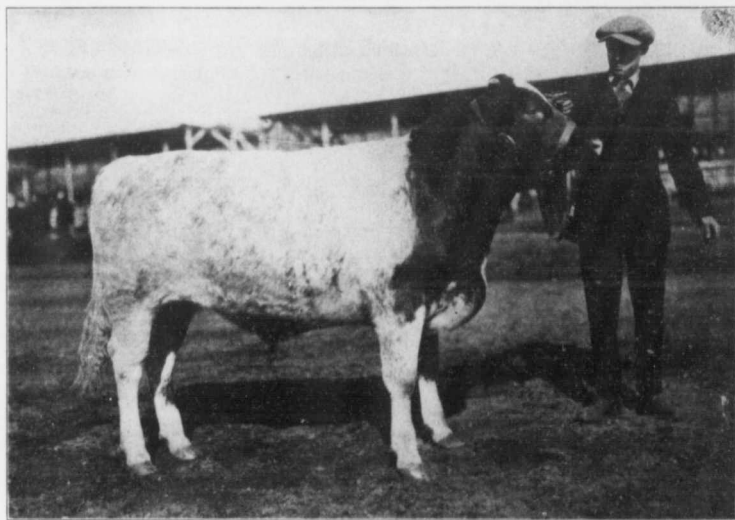
R. S. STEVENSON,
Director.
Chairman, Dairy Classes.



W. A. DRYDEN,
Director.



JOHN McKEE,
Director.



One of the good ones to be seen at Guelph.

COMPARATIVE STATEMENT OF ENTRIES IN BEEF AND DAIRY CLASSES SINCE 1910.

| | 1910 | 1911 | 1912 | 1913 | 1914 | 1915 | 1916 | 1917 | 1918 | |
|------------------------------|-------------------------|------|------|------|------|------|------|------|------|-----|
| Beef Cattle | Shorthorn | 36 | 39 | 34 | 47 | 44 | 62 | 82 | 74 | 107 |
| | Hereford | 21 | 16 | 12 | 13 | 13 | 27 | 19 | 43 | 70 |
| | Aberdeen-Angus | 8 | 6 | 7 | 11 | 6 | 19 | 27 | 27 | 38 |
| | Galloway | 13 | 4 | 6 | 4 | 8 | 10 | .. | .. | .. |
| | Grade or Cross | 51 | 48 | 44 | 58 | 83 | 83 | 67 | 31 | 40 |
| | Amateur Class | 62 | 36 | 31 | 21 | 40 | 57 | .. | .. | .. |
| | Export Steers | 10 | 5 | 6 | 6 | 9 | .. | .. | .. | .. |
| | Dressed Carcasses | 17 | .. | .. | .. | .. | .. | .. | .. | .. |
| Inter-County Baby Beef | .. | .. | .. | .. | .. | .. | .. | 3 | 5 | |
| | 218 | 154 | 140 | 160 | 203 | 258 | 185 | 178 | 260 | |
| Dairy Cattle | Shorthorn | 1 | 1 | 2 | 6 | 4 | 6 | 4 | 5 | 7 |
| | Ayrshire | 10 | 22 | 19 | 16 | 17 | 53 | 41 | 36 | 43 |
| | Holstein | 26 | 34 | 37 | 34 | 27 | 72 | 34 | 39 | 51 |
| | Jersey | 6 | .. | 3 | 14 | 13 | 4 | 24 | 19 | 25 |
| | Grade | 5 | 5 | 8 | 9 | 11 | 11 | 11 | 6 | 8 |
| | 48 | 62 | 69 | 79 | 72 | 146 | 114 | 105 | 134 | |



WM. McNEIL,
Director,
Chairman, Live Poultry
Classes.



J. H. SAUNDERS,
Director.



A. W. TYSON,
Director.



W. SIMPSON,
Director.

Poultrymen COME TO THE ONTARIO

1918 poultry entries were 6,323, and the prize money paid amounted to \$5,500.00.

Boost Better Bulls

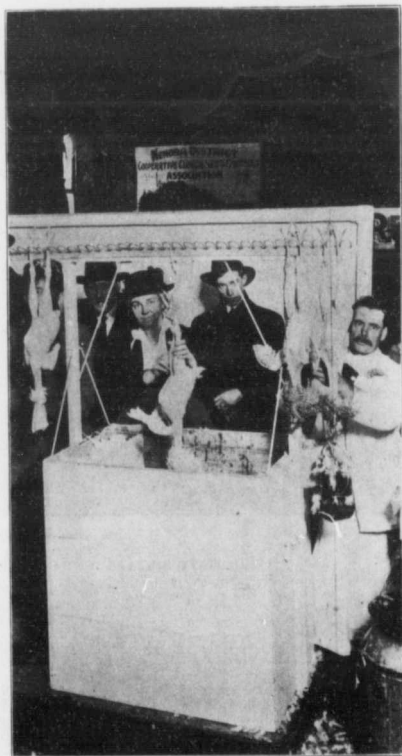
Pure-bred bulls are the greatest single factor in herd improvement. It is the progeny of pure-bred sires that win at our larger shows. Pure-bred sires produce the cows that fill the pail at a profit and the beef steers that top the market. A survey of a dairy farming section in Oxford County, Ontario, showed that there was three times the profit per cow where pure-bred dairy bulls were well established. Steers from pure-bred bulls regularly bring 1½ to 2½ cents per pound more on Toronto market than do cattle sired by grade and scrub bulls.

FIFTY PER CENT. OF THE BREEDING BULLS IN ONTARIO ARE GRADES OR SCRUBS.

The Ontario Department of Agriculture is co-operating with the Ontario Cattle Breeders' Association in an effort to

SWAT THE SCRUB SIRE.

You can help by saving the good bull from the slaughter house and sending the scrubs to the shambles.



Poultry Demonstration at Guelph.



PETER CHRISTIE,
Director,
Chairman, Heavy Horse
Classes.



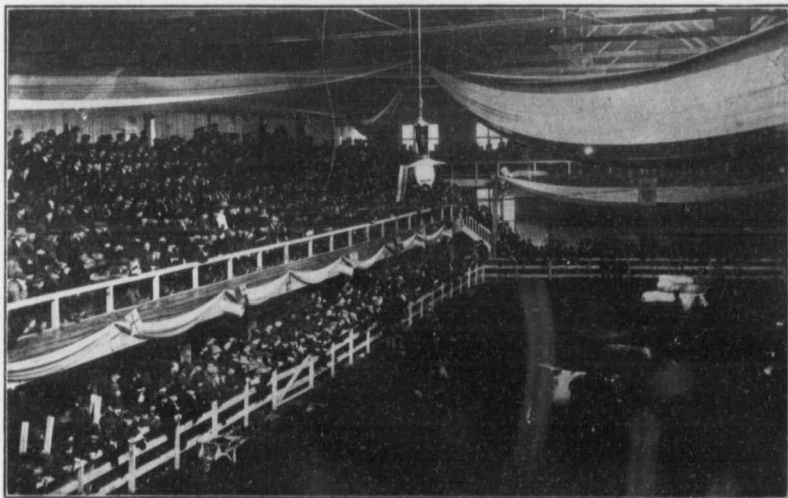
DR. T. H. HASSARD,
Director,
Chairman, Light Horse
Classes.



JOHN A. BOAG,
Director.



H. M. ROBINSON,
Director.



The Arena at Guelph Show.

COMPARATIVE STATEMENT OF ENTRIES IN HORSES, 1909-1918.

| | 1909 | 1910 | 1911 | 1912 | 1913 | 1914 | 1915 | 1916 | 1917 | 1918 |
|---------------------|------|------|------|------|------|------|------|------|------|------|
| Clydesdale | 132 | 141 | 164 | 128 | 202 | 144 | 171 | 140 | 168 | 211 |
| Shire | 18 | 17 | 12 | 11 | 10 | 6 | 7 | 8 | 5 | 9 |
| Percheron | .. | .. | .. | 48 | 48 | 35 | 28 | 27 | 32 | 42 |
| Hackney | 29 | 18 | 21 | 13 | 27 | 27 | 44 | 22 | 35 | 36 |
| Standard-Bred | 24 | 17 | 16 | 12 | 11 | 14 | 33 | 28 | 36 | 24 |
| Thoroughbred | 11 | 14 | 8 | 6 | 17 | 16 | 12 | 31 | 22 | 18 |
| Pony | 17 | 6 | 15 | 13 | 13 | 14 | 30 | 12 | 20 | 15 |
| Heavy Draft | 28 | 35 | 38 | 35 | 45 | 31 | 51 | 34 | 24 | 43 |
| Saddle Horses | .. | .. | .. | .. | .. | .. | .. | .. | 6 | .. |
| | 259 | 248 | 274 | 266 | 373 | 287 | 376 | 302 | 338 | 398 |



W. J. W. LENNOX,
Director.
Chairman, Seed Committee



R. E. MORTIMER,
Director.
Assistant Secretary,
1916-1917.



T. G. RAYNOR,
Director.



SEED EXHIBIT, O.P.W.F.

SPECIAL SWEEPSTAKES TROPHY.

(Awarded by the Wm. Rennie Seed Co., Toronto, Ont.)

The member making the most creditable showing of not more than 3 varieties of selected seed (corn not included) will be awarded a special trophy in the form of a handsome Silver Cup, donated by the Wm. Rennie Seed Co., Toronto, Ont. The cup is not to become the permanent property of the grower until won by him three times, but not necessarily in succession. Between exhibitions this trophy may be held by the last winner, whose name may be engraved thereon at the Association's expense.

Won in 1911 and 1912 by Duncan Carmichael, West Lorne; in 1913, by T. J. Shepley, Amherstburg; in 1914, by Andrew Schmidt, Mildmay; in 1915, by Herman Goltz,

Bardsville; in 1916 and 1918, by Wm. Naismith, Falkenburg; in 1917, by H. L. Goltz, Bardsville.

SPECIAL SWEEPSTAKES TROPHY.

(Awarded by George Keith & Sons, Toronto, Ontario)

For the best bushel of Alfalfa, Red or Alsike Clover. A perpetual challenge, which must be returned by the winner to the Secretary of the Winter Fair one month previous to the opening of the next Show.

Won in 1916 by C. Snyder, Oxdrift; in 1917 by C. Snyder, Oxdrift; in 1918 by Wm. Roth, Fisherville.

SALE OF SEEDS.

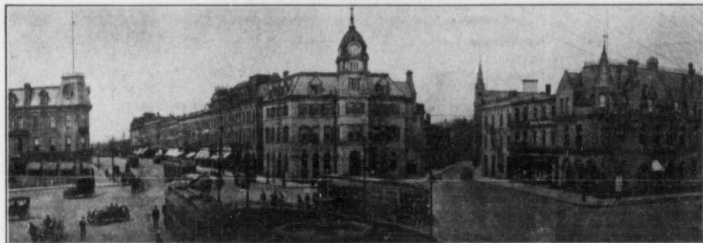
On Wednesday, December 10th, at 10 a.m.

COMPARATIVE STATEMENT OF ENTRIES IN SEED SINCE 1910.

| | 1910 | 1911 | 1912 | 1913 | 1914 | 1915 | 1916 | 1917 | 1918 |
|------------|------|------|------|------|------|------|------|------|------|
| Seed | 148 | 138 | 186 | 269 | 337 | 331 | 374 | 252 | 394 |

MANUFACTURES IN GUELPH.

| Name | Product Manufactured | Name | Product Manufactured |
|--|-------------------------------------|--|---|
| Ambrose, J. L. & Son..... | Monumental Work | Hamilton & Son..... | Marble Works, Tombstones, etc. |
| Armstrong Mfg. Co. | Furniture | Imperial Biscuit Co. | Biscuits, etc. |
| Aspinwall Mfg. Co. | Potato Machinery | Imperial Oil Co. | Road Oil, Engine Oil, etc. |
| Barber, Chas. W. | Pork Packer | International Malleable Iron Co., Ltd. | General Malleable Iron and Fittings, etc. |
| Bell Piano & Organ Co. | Pianos and Organs | Jackson Signal Co. | Detonators, etc. |
| Cain & Wagner..... | Metal Workers | Kickley, Geo. | Soda Water |
| Callander Foundry Co. | General Iron Work | Kloepfer, C., Ltd. | Carriage Hardware |
| Canada Ingot Iron Culvert Co. | Iron Culverts, etc. | Lang Machinery Co. | Carden Seats, Machinery |
| Canadian Gate Co., Ltd. | Steel Gates | Louden Machinery Co. | Farm Implements, etc. |
| Canadian Metal Products.... | High Carbon Steel Tubing | Malt Products Co. of Canada. | Malt Goods |
| Canadian Textile Weaving Co. | Webbing and Fringes | McAllister, Geo. & Son..... | Lumber |
| Canham, V. H. | Patent Specialties | McIntosh, Jno. W. | Tile Manufacturer |
| Cartledge, J. S. | Elastic Hosiery | McKenzie Machinery Co. | General Machinery |
| Cheevers, J. E. | Book Binder and Loose Leaf | Modern Paper Box Co., Ltd. | Box Manufacturers |
| Colonial Whitewear Co., Ltd. | Ladies' Apparel | Muller's Carriage Works ... | Carriages, etc. |
| Collins & Kirby. | Spring Mattresses | Munder Tungsten Lamp Co. | Tungsten Lamps |
| Commercial Motor Bodies, Ltd. | Motor Bodies | Murton, Harry | Split Pea Mill |
| Corinthian Stone Co. | Stone Work, General | New Dominion Casket Co. | Caskets |
| Crowes' Iron Works..... | Piano Plates and General Iron | New Idea Spreader Co. | Agricultural Implements |
| Daylyte Lamp Co., Ltd. | Electric Lamps | Northern Rubber Co. | Rubber Footwear |
| Dominion Linen Mfg. Co. | General Linen Goods | Nunan, F. | Bookbinder and Loose Leaf |
| Dominion Food Products Co., Ltd. | Pickles, Sauces and Jams | Oecomore, H. | Roofer and Metal Worker |
| Electric Boiler Compound Co. | Lubricating Oil and Engine Supplies | Page Hersey Tube Co., Ltd. | Wrought Iron Tubing |
| Field Pump Works..... | | Parker & Son, G. H. | Auto Tops and Slip Covers |
| Flax Spinners, Ltd. | Linen Yarns and Threads | Partridge, F. E., Rubber Co. | Tires and Rubber Goods |
| Flexible Conduit Co. | Electric Cable and Conduit | Pearson, Walter | Brooms |
| Fried, Grills Hat Co. | Hats | Penfold, S. G. | Farm Implements and Hardware |
| Gilson Engine Works..... | Gas Engines | Regal Hosiery Co. | Men's Worsteds Socks |
| Goldie, Jas. Co., Ltd. | Millers | Reinhart, A. J. | Soda Water |
| Griffin, Thos. | Stoves | Reinhart, John | Carriage Works |
| Guelph Arena Co., Ltd. | Skating Rink | Royal Knitting Co. | Knitted Goods |
| Guelph Biscuit Confy. Co. | Confectionery | Ryder, Jas. | Mineral Water |
| Guelph Carpet Mills Co., Ltd. | Carpets, Rugs, etc. | Scythes & Co., Ltd. | Manufacturers Oiled Clothing |
| Guelph Carriage Top Co. | Carriage Equipment | Sherer Gillette Co., Ltd. | Counter Manufacturing |
| Guelph Cotton Mill, Ltd. | Cotton Goods | Shinn Manufacturing Co. | Lightning Protection |
| Guelph Dye Works..... | General Dye Works | Springbank Brewery | |
| Guelph Elastic Hosiery Co. | Elastic Goods | Standard White Lime Co. | Lime, etc. |
| Guelph Knit Goods Co. | Knitted Ware, General | Steel, Jas., Ltd. | Wire and Spring Manufacturer |
| Guelph Lumber Yards..... | Lumber | Sterling Rubber Co., Ltd. | General Rubber Goods |
| Guelph Oiled Clothing Co., Ltd. | General Oiled Clothing | Stewart, Robt., Ltd. | General Lumber |
| Guelph Paper Box Co., Ltd. | Paper Boxes | Stull, H. H. O. | Wool, Hide, Skin, Fur Curer |
| Guelph Pattern Works..... | Patterns, Wood and Metal | Taylor Forbes Co. | Radiators, Hardware |
| Guelph Rug Works..... | Rugs, etc. | Tolton Bros., Ltd. | Agricultural Implements, Paper Boxes |
| Guelph Soap Co. | Soap | Tolton Manufacturing Co. | Trouser Manufacturers |
| Guelph Spring & Axle Co., Ltd. | Springs, Axles, etc. | Webber, F. R. | Cooper and Wire Koop Works |
| Guelph Stove Co. | Stoves, Cook, etc. | Whaley, Thos. | All-Metal Weather Strips |
| Guelph Tent & Awning Co. | Tents, Marquees, etc. | White Sewing Machine Mfg. Co. of Canada..... | Sewing Machines |
| Guelph Tire Sales and Vulcanizing Co. | Auto Tire and Vulcanizing | Yeates & Thomas | Ice Cream and Confectionery |
| Guelph Worsteds Spinning Co., Ltd. | Worsteds Goods | | |



St. George's Square, Guelph.



Public Library, Guelph.

A Progressive City, The Mecca of Farmers

GUELPH

A Solid City, In the Heart of Ontario

Good openings for industries in almost every line of manufacture. Guelph has many exceptional advantages. The city offers special inducements. The future of Guelph is assured because the city is endowed with many natural advantages for a manufacturing centre; it is a delightful place to live in; and, best of all, the citizens of Guelph work hand in hand with enthusiastic vigor to improve and develop their city.



Guelph is a Solid City

GUELPH is built of solid limestone. GUELPH'S solid reputation is built on the character of her people.

GUELPH'S industries have been built up with solid business.

GUELPH is surrounded by prosperous farmers.

GUELPH'S colleges are renowned for thorough teaching.

GUELPH'S workmen and employees have cordial relations.

GUELPH is a city of beautiful parks and shaded avenues.

GUELPH'S golf, cricket, tennis, baseball, canoe, bowling and curling clubs provide health and contentment.



A Winter Park Scene, Guelph.

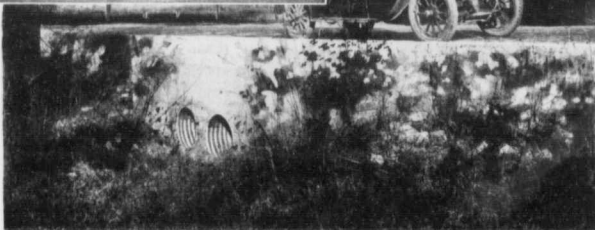
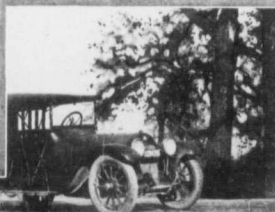


Twelve years ago these **ARMCO IRON Culverts** were installed on what is now a part of the Dixie Highway.

A dozen years of service, and two disastrous floods have failed to make any impression on them. The upper picture shows the roadway washed away, the culverts unaffected.

For the permanent road, **ARMCO IRON Culverts** are the ideal installation.

The ARMCO trade mark is a guarantee of quality — their record of service your assurance of permanence.



Made in Guelph by
Canada Ingot Iron Company, Ltd.

Facts about Guelph

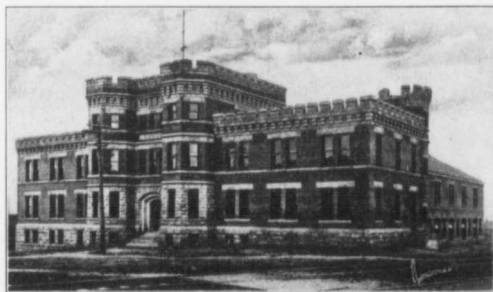
- GUELPH was founded in 1827; created a city in 1879.
- GUELPH is the County Town of the County of Wellington, and the seat of the Ontario Agricultural College and of the Ontario Provincial Winter Fair.
- GUELPH is visited annually by over 100,000 farmers—a valuable publicity factor.
- GUELPH has over 90 prosperous factories. It is a noted centre for grey iron castings; the only linen mill in Canada is located here.



E. CARTER,
Mayor of Guelph.

Facts about Guelph

- GUELPH is served by the trunk line of the Grand Trunk Railway and by the Canadian Pacific Railway. There are seven branch lines.
- GUELPH is famous as a health resort—1,143 feet above sea level.
- GREATER GUELPH has a population of over 20,000.
- GUELPH has a very active Chamber of Commerce.



The Armouries at Guelph—Headquarters of the 30th Infantry Regiment, the 1st Howitzer Brigade and the 16th Battery.

Guelph Chamber of Commerce extends a hearty invitation to manufacturers and business men to investigate the opportunities in the Royal City.



The Ontario Agricultural College—Boys' Residence.

Write for our illustrated booklet with full details of our city, illustrations of our buildings and parks, and complete list of our manufacturers.

Address: The Chairman of Railway and Manufacturers' Committee, City Council, Guelph



COL. DAVID McCRAE,
Guelph,
Father of the late Lieut.-
Col. John McCrae.

The Call

*To you from failing hands we throw
The torch; be yours to hold it high.
If ye break faith with us who die
We shall not sleep, though poppies
grow
In Flanders fields.*



LATE LIEUT.-COL.
JOHN McCRAE.

The Answer

*Four hundred millions starving?—a world of bankrupt States?
Europe a debtor's prison?—Red ruin at the gates?
Out on your tale of terror! Strip off the coward's mask!
The more mounts British courage the harder is the task.*

*We'll set our engines roaring, we'll show the world again
What pride is in our women, what wonder in our men;
We'll pile the quays with plenty, and swing rich wealth aboard
We'll break the back of Hunger as we broke the Prussian Sword;*

*We'll make a greater Empire in saving all the world,
For it's Britain's trumpet calling, it's her flag still unjur'd,
A nobler, gladder Empire, in body, soul, and mind;
Coats off, sleeves up, and steady, for the sake of all mankind.*

Victory Loan, 1919

The proceeds of the Loan will be used to pay indebtedness incurred, and to meet expenditures to be made in connection with demobilization (including the authorized war service-gratuity to our soldiers, land settlement loans, and other purposes connected with their re-establishment into civil life), for capital outlay upon ship-building, and other national undertakings forming part of Canada's industrial reconstruction programme, and for the establishment of any necessary credits for the purchase of grain, food-stuffs, timber, and other products, and will be spent wholly in Canada.

O·P·W·F

PROGRAMME

FRIDAY, DECEMBER 5TH.

Judging Poultry.

SATURDAY, DECEMBER 6TH.

Judging Poultry.

Judging Seeds.

MONDAY, DECEMBER 8TH.

9.00 a.m.—Judging Sheep.

10.00 a.m.—Judging Shires.

9.00 a.m.—Judging Swine.

1.30 p.m.—Judging Shorthorns.

8.00 p.m.—Judging Thoroughbreds.

TUESDAY, DECEMBER 9TH.

9.00 a.m.—Judging Sheep and Swine.

11.00 a.m.—Judging Percherons.

10.00 a.m.—Judging Dairy Bulls.

3.00 p.m.—Judging Herefords and Angus.

10.00 a.m.—Dairy Test Posted.

8.00 p.m.—Judging Standard-breds.

WEDNESDAY, DECEMBER 10TH.

9.00 a.m.—Judging Beef Grades.

4.00 p.m.—Display of Sheep Carcasses.

10.00 a.m.—Sale of Seeds.

4.00 p.m.—Display of Swine Carcasses.

1.30 p.m.—Judging Clydesdales.

8.00 p.m.—Judging Hackneys.

THURSDAY, DECEMBER 11TH.

9.00 a.m.—Judging Clydesdale.

2.00 p.m.—Sale of Dressed Carcasses.

10.00 a.m.—Sale of Dressed Poultry.

7.00 p.m.—Judging Clydesdales.

1.30 p.m.—Judging Clydesdales.

9.00 p.m.—Parade of Prize Winners.

Secretary's Office—Parliament Buildings, Toronto