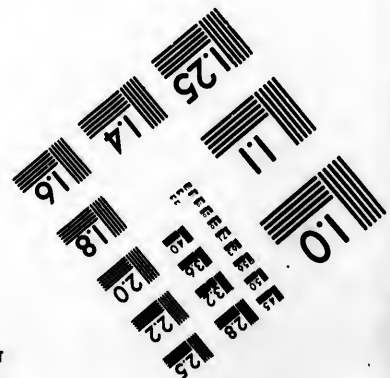
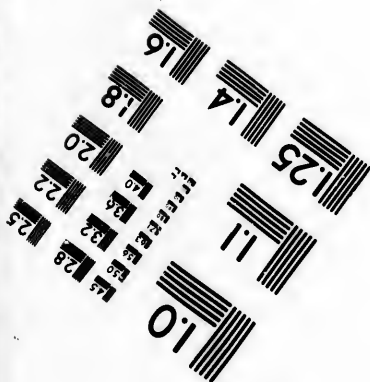
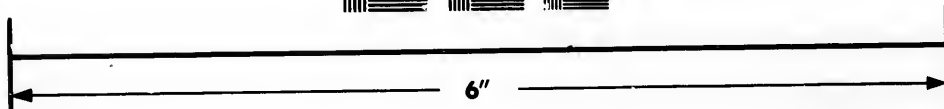
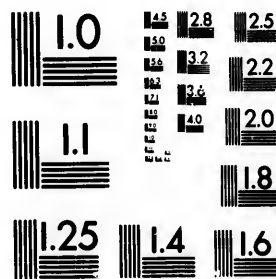


**IMAGE EVALUATION
TEST TARGET (MT-3)**



**Photographic
Sciences
Corporation**

23 WEST MAIN STREET
WEBSTER, N.Y. 14580
(716) 872-4503

1.8
2.0
2.2
2.5
2.8
3.2
3.6
4.0

**CIHM/ICMH
Microfiche
Series.**

**CIHM/ICMH
Collection de
microfiches.**



Canadian Institute for Historical Microreproductions / Institut canadien de microreproductions historiques

1.0
1.1
1.2
1.4
1.6
1.8
2.0

© 1984

Technical and Bibliographic Notes/Notes techniques et bibliographiques

The Institute has attempted to obtain the best original copy available for filming. Features of this copy which may be bibliographically unique, which may alter any of the images in the reproduction, or which may significantly change the usual method of filming, are checked below.

L'Institut a microfilmé le meilleur exemplaire qu'il lui a été possible de se procurer. Les détails de cet exemplaire qui sont peut-être uniques du point de vue bibliographique, qui peuvent modifier une image reproduite, ou qui peuvent exiger une modification dans la méthode normale de filmage sont indiqués ci-dessous.

- | | |
|---|---|
| <input type="checkbox"/> Coloured covers/
Couverture de couleur | <input type="checkbox"/> Coloured pages/
Pages de couleur |
| <input type="checkbox"/> Covers damaged/
Couverture endommagée | <input type="checkbox"/> Pages damaged/
Pages endommagées |
| <input type="checkbox"/> Covers restored and/or laminated/
Couverture restaurée et/ou pelliculée | <input type="checkbox"/> Pages restored and/or laminated/
Pages restaurées et/ou pelliculées |
| <input type="checkbox"/> Cover title missing/
Le titre de couverture manque | <input checked="" type="checkbox"/> Pages discoloured, stained or foxed/
Pages décolorées, tachetées ou piquées |
| <input type="checkbox"/> Coloured maps/
Cartes géographiques en couleur | <input type="checkbox"/> Pages detached/
Pages détachées |
| <input type="checkbox"/> Coloured ink (i.e. other than blue or black)/
Encre de couleur (i.e. autre que bleue ou noire) | <input checked="" type="checkbox"/> Showthrough/
Transparence |
| <input type="checkbox"/> Coloured plates and/or illustrations/
Planches et/ou illustrations en couleur | <input type="checkbox"/> Quality of print varies/
Qualité inégale de l'impression |
| <input type="checkbox"/> Bound with other material/
Relié avec d'autres documents | <input type="checkbox"/> Includes supplementary material/
Comprend du matériel supplémentaire |
| <input type="checkbox"/> Tight binding may cause shadows or distortion along interior margin/
La reliure serrée peut causer de l'ombre ou de la distortion le long de la marge intérieure | <input type="checkbox"/> Only edition available/
Seule édition disponible |
| <input type="checkbox"/> Blank leaves added during restoration may appear within the text. Whenever possible, these have been omitted from filming/
Il se peut que certaines pages blanches ajoutées lors d'une restauration apparaissent dans le texte, mais, lorsque cela était possible, ces pages n'ont pas été filmées. | <input type="checkbox"/> Pages wholly or partially obscured by errata slips, tissues, etc., have been refilmed to ensure the best possible image/
Les pages totalement ou partiellement obscurcies par un feuillet d'errata, une pelure, etc., ont été filmées à nouveau de façon à obtenir la meilleure image possible. |
| <input type="checkbox"/> Additional comments:/
Commentaires supplémentaires: | |

This item is filmed at the reduction ratio checked below/
Ce document est filmé au taux de réduction indiqué ci-dessous.

10X	14X	18X	22X	26X	30X
<input type="checkbox"/>	<input type="checkbox"/>	<input checked="" type="checkbox"/>	<input type="checkbox"/>	<input type="checkbox"/>	<input type="checkbox"/>
12X	16X	20X	24X	28X	32X

The copy filmed here has been reproduced thanks to the generosity of:

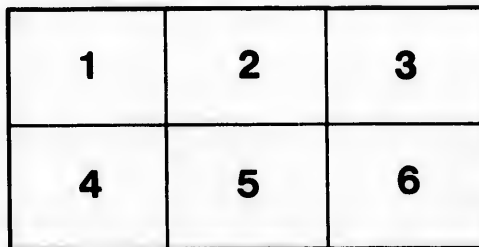
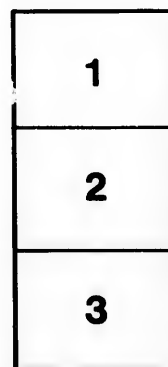
Library of the Public
Archives of Canada

The images appearing here are the best quality possible considering the condition and legibility of the original copy and in keeping with the filming contract specifications.

Original copies in printed paper covers are filmed beginning with the front cover and ending on the last page with a printed or illustrated impression, or the back cover when appropriate. All other original copies are filmed beginning on the first page with a printed or illustrated impression, and ending on the last page with a printed or illustrated impression.

The last recorded frame on each microfiche shall contain the symbol \rightarrow (meaning "CONTINUED"), or the symbol ∇ (meaning "END"), whichever applies.

Maps, plates, charts, etc., may be filmed at different reduction ratios. Those too large to be entirely included in one exposure are filmed beginning in the upper left hand corner, left to right and top to bottom, as many frames as required. The following diagrams illustrate the method:



L'exemplaire filmé fut reproduit grâce à la générosité de:

La bibliothèque des Archives
publiques du Canada

Les images suivantes ont été reproduites avec le plus grand soin, compte tenu de la condition et de la netteté de l'exemplaire filmé, et en conformité avec les conditions du contrat de filmage.

Les exemplaires originaux dont la couverture en papier est imprimée sont filmés en commençant par le premier plat et en terminant soit par la dernière page qui comporte une empreinte d'impression ou d'illustration, soit par le second plat, selon le cas. Tous les autres exemplaires originaux sont filmés en commençant par la première page qui comporte une empreinte d'impression ou d'illustration et en terminant par la dernière page qui comporte une telle empreinte.

Un des symboles suivants apparaîtra sur la dernière image de chaque microfiche, selon le cas: le symbole \rightarrow signifie "A SUIVRE", le symbole ∇ signifie "FIN".

Les cartes, planches, tableaux, etc., peuvent être filmés à des taux de réduction différents. Lorsque le document est trop grand pour être reproduit en un seul cliché, il est filmé à partir de l'angle supérieur gauche, de gauche à droite, et de haut en bas, en prenant le nombre d'images nécessaire. Les diagrammes suivants illustrent la méthode.

errata
to

pelure,
on à



32X

14

REPORT
ON
EDUCATION
IN
LOWER CANADA,

FOLLOWED BY
STATISTICAL TABLES

FOR THE
SCHOOL YEAR,

1849 - 50.

~~~~~  
PRINTED BY ORDER OF THE LEGISLATIVE ASSEMBLY.  
~~~~~



Toronto:
LOVELL AND GIBSON, FRONT STREET.
1851.

1851
(27)

R E P O R T
ON
E D U C A T I O N
IN
LOWER CANADA.

OFFICE OF EDUCATION,
MONTREAL, *12th June, 1851.*

HONOURABLE JAMES LESLIE,
Provincial Secretary.

SIR,—In conformity with the 6th Article of the 35th Clause of the Common School Act, 9 Vict. cap. 27, I have the honour to transmit to you, for the information of His Excellency, the Governor General, and of the two Houses of the Legislature of the Province, the following Statistical Tables, namely :

1. Tables shewing the number of Schools which have been in operation during the last six months of the year 1849, and the first six months of the year 1850 ; the number of children attending them ; and the amount contributed by the rate-payers, and that paid by the Government, for the maintenance of the said Schools, during their said terms of Instruction.

2. A Table, shewing the number of School houses built or repaired under the superintendence of the School Commissioners, in virtue of the laws therein mentioned ; the amount contributed by the rate-payers, and the amount paid by Government for the said Houses ; describing at the same time the description of Schools for which they are intended, in order to carry out the intentions of the Education Act.

I would gladly have transmitted these tables to the Seat of Government at an earlier day, but have not been able, notwith-

standing my most strenuous exertions. Of the last mentioned, I may truly assert that it has for many days past been a constant source of laborious occupation, inasmuch as being the recapitulation of the contents of many various documents, and of correspondence of considerable length, concerning them, it required immense labour to bring it to completion.

Moreover, in order to transmit the return of School-houses at an earlier date, I should have been compelled to neglect the public service out of doors; and in order to render it as complete as possible, I considered that it would be well to await the end of the School year, which closes with the month of June, in order to include in it the greatest number of School-houses for which a grant has been made; being convinced also, that I should be enabled, even so, to forward it in good time to allow His Excellency and the Legislature, without inconvenience, to make such use of it, during the present Session of Parliament, as the interests of Education might seem to demand.

This Table, constructed on an extensive scale, comprehends interesting details, which bear favourable testimony of the advantages of popular education in Lower Canada. It affords proof likewise of an amount of exertion and of sacrifices which are honourable alike to the friends of the cause and to the country.

It does not, however, fully shew all that has been done in the building of Schools in this Province. There are still a number built within a few months, for which the School Commissioners ask an aid, and which are not included in the present table.

According to the latest reports transmitted to this office, the number of School-houses built under the superintendence of the School Commissioners, in the School Municipalities, amount to 1070. Of these properties, some are worth several thousand pounds; and a considerable number are worth more than five hundred pounds.

Yet the grant has never exceeded the half of the estimated cost of the houses; and that made in favour of the principal School establishments, under the superintendence of the School Com-

missioners, has generally been far below the estimate. Of this any one may be convinced by casting his eye over the Table.

The Statistics of the Schools conducted under the superintendence of the School Commissioners is no less satisfactory.

The hope which I expressed in my last year's Report of a new increase in the number of children attending School has been realized.

The first term of 1849, shewed 1696 Commissioners' Schools, 17 dissentient Schools, and 68,422 children attending them; while the second School term of the same year shews 1789 Commissioners' Schools, 28 dissentient Schools, and 68,994 children attending them; shewing an increase in the second term of 93 Commissioners' Schools, 11 dissentient Schools, and 572 children attending them.

The first term of 1850 affords a result still more satisfactory; the number of Commissioners' Schools is 1845—of dissentient Schools, 84, and of children attending them, 73,643; being an increase of 56 Commissioners' Schools, 6 dissentient Schools, and 4,649 children frequenting them. It appears, then, that in the twelve months next after the first of July, 1849, ending the first of July, 1850, the number of Schools has increased by 166, and that of the children attending them by 5,221. This is a result to me highly satisfactory, and well calculated to prove that the cause of popular education is daily gaining ground among the people, and that, if we persevere, we cannot fail speedily to convince all classes of the excellence of our system.

In the same period, reckoning up to the present time, there have been established more than sixty new School Municipalities, formed either by the division of old Municipalities or in newly settled localities. This is one of the causes which have tended to increase the number of Schools, and of children attending them. In many of those places the law did not work at all. Those who applied for the establishment of these new Municipalities, set diligently to work, in every instance, to establish Schools forthwith, on being organized; and their good example not unfrequently induced the rest of the old Municipalities to comply with the law.

In respect of the instruction given in these Schools, I may

venture to affirm that the advancement of the scholars in learning is as satisfactory as the desire of the people for its diffusion. From the information furnished by the Reports which the School Municipalities transmit to this office, from that furnished by the numerous answers to the questions contained in my Circular No. 14, (of which see a copy annexed, with a table of the answers thereto,) addressed last autumn as a point of duty to School Commissioners and School Visitors in each Municipality: from that, finally, which I acquire verbally in the routine inquiries of my office, from competent persons, I gather that in a third at least of the Schools, more is taught than the law appoints to be taught in elementary Schools, without, however, meddling with all that properly pertains to a Model School, while in the rest, or nearly so, all the branches of learning are taught which are appointed to be taught in Common Schools. The number of these where this is not done is very small.

Moreover, there are sixty-four Model Schools in operation in the School Municipalities, of which I have reports now before me; and forty-four Superior Girls' Schools. As I before said, I can venture to vouch for the correctness of the present returns; but I am unable to be more precise in matters of detail.

The salaries paid to Teachers vary from £15 to £100, or even to £120 per annum. The rate most usually allowed is between £30 and £60.

The number of Schools taught by females exceeds, in a small degree, the half of the whole number of Schools. The reason of this is, that their services can be had at rates which bear much more lightly on the rate-payers. Nevertheless, Teachers are more sought after and appreciated than they have hitherto been, and as the time approaches when they are bound by law to be furnished with a Certificate of their attainments and capacity, they are generally studying to prepare themselves to undergo the test before the Board of Examiners. More than fifty of them have already undergone the examination appointed by law to be passed by them on or before the first day of July, 1852. The majority of these have obtained Certificates as

Model School Teachers, some as fitted to preside over Academies.

And now, it would be proper that I should give my opinion concerning the provisions of the existing School Law, if I had not already done so, at some length, in the Report which I had the honour to forward to you for His Excellency's consideration, on the 25th March last. My duty—a heartfelt conviction of what is right—render me an enemy to every kind of change which might involve the subversion of the fundamental principles of the present School Law; but I humbly solicit additional means, to ensure its more easy, certain and efficient operation. Now the means which, brought into practice at the present juncture, would satisfy the friend of Education, are principally these:

1. A literary qualification for School Commissioners;
2. The establishment of a Normal School;
3. Deputy Superintendents;
4. Public Libraries;
5. A Journal of Education.

It is plain that as long as the Superintendent of Public Education in Lower Canada stands alone in the work of discovering and removing the obstacles which obstruct its progress on the spot, he will have no time to devote to the compilation of a Journal of Education in English and French, or even to obtain the information necessary for a uniform and detailed statement of such progress, exact as he would desire to make it.

Local difficulties, and the numerous letters and interviews consequent on them, require the presence of the Superintendent at the same time in several places, but he cannot be at once in town and country, at his office, and visiting Schools. The state of things would be widely different, if, from the first, a literary qualification had been required in School Commissioners, and if the Law itself had encountered no opposition. Add to the above, that the Superintendent for Lower Canada is burthened with a heavy pecuniary responsibility, as may be seen by the Tables annexed. It is necessary, therefore, that he

should have local assistance of a more enlightened, more energetic, and more efficient character.

The whole, nevertheless, respectfully submitted.

I have the honour to be,

Sir,

Your most obedient servant,

(Signed,)

J. B. MEILLEUR, S. E.

~~~~~

A GENERAL TABLE of the Answers returned to Circular Letter, No. 14.

| DISTRICT OF QUEBEC AND GASPÉ. |                       | DISTRICT OF THREE-RIVERS. |                       | DISTRICT OF MONTREAL. |                       |
|-------------------------------|-----------------------|---------------------------|-----------------------|-----------------------|-----------------------|
| Visitors.                     | School Commissioners. | Visitors.                 | School Commissioners. | Visitors.             | School Commissioners. |
| 33                            | 54                    | 6                         | 13                    | 36                    | 102                   |

Answers were received to 234 of those Circulars as follows, viz: from—

|                            |     |     |     |     |
|----------------------------|-----|-----|-----|-----|
| School Visitors .....      | 47  | 11  | 17  | 75  |
| School Commissioners ..... | 91  | 17  | 51  | 159 |
| Total .....                | 138 | 28  | 68  | 234 |
| Grand total.....           | ... | ... | ... | 234 |

|                            | In favour of the Law. | Against the Law. | Neither for nor against. |
|----------------------------|-----------------------|------------------|--------------------------|
| School Visitors .....      | 47                    | 11               | 17                       |
| School Commissioners ..... | 91                    | 17               | 51                       |
| Total .....                | 138                   | 28               | 68                       |
| Grand total.....           | ...                   | ...              | ...                      |

[Circular No. 14.]

EDUCATION OFFICE, EAST,

MONTREAL, September 20th, 1850.

Being unable to visit the several School Municipalities, the Superintendent hopes that Messieurs the School Visitors would be pleased, for the interest of Education, to visit the several Schools in their respective Scholastic Municipalities, and inquire minutely into all that relates to the same, in order to enable themselves to answer the following Questions:—

QUESTIONS.

- 1.—Have there been any matters of dispute connected with the operation of the present School Act in your Municipality, and how have they been settled?
- 2.—Was the present School Act prevented from operating in your Municipality, and from what cause?
- 3.—Have you any remarks which you may think useful, to lead to the improvement of the present School Bill, so as to insure its efficient operation?
- 4.—Are the Accounts rendered to the satisfaction of the inhabitants; if not, give the reason?
- 5.—Is there any money of the School Fund remaining unappropriated in the hands of the School Commissioners; if so, state the amount, and reason of detention?
- 6.—Have any of the Teachers of your Municipality been removed by the Commissioners during the year; if so, give the number of their School District, name, and cause of removal?

- 7.—Is there a Model School in your Municipality; if so, by whom conducted?

ANSWERS.

7.—Is there a Model School in your Municipality; if so, by whom conducted?

8.—Is there a Special Girls' School in your Municipality; if so, by whom conducted?

9.—Indicate by letter A, each School in which the branches of instruction prescribed by law for the mere Elementary Schools are taught.

10.—Indicate by letter B, each School in which the branches of instruction prescribed by law for Model Schools are taught.

11.—Give the number and names of Teachers who are provided with Diplomas from one of the Boards of Examiners.

12.—If there are any independent Schools in your Municipality, please state the number, and the number of Children attending them.

13.—How many Mixed Schools are taught by Females? Please state the age of such Female Teachers.

14.—What is the number of School-Houses in your Municipality, and their condition respectively?

15.—Have you visited the Schools during the period of Instruction, and at what time?

16.—Have the Teachers regular engagements with the School Commissioners?

17.—Have the School Commissioners visited the Schools, and at what time?

In the terms of the 10th article of 50th Vic. c. 27.



HALF-YEARLY REPORT for the second term of 1849.

COUNTY OF BEAUHARNOIS.

| Municipalities.       | Schools.       |              | Number of Children attending the Schools from 5 to 16 years of age. | Six months' allowance of the sum allotted to Lower Canada. |         | Amounts granted. |     |    |    |
|-----------------------|----------------|--------------|---------------------------------------------------------------------|------------------------------------------------------------|---------|------------------|-----|----|----|
|                       | Commissioners' | Dissentient. |                                                                     | £ s. d.                                                    | £ s. d. |                  |     |    |    |
| Anicet, St....        | 7              | 1            | 185                                                                 | 34                                                         | 8       | 10               | 34  | 8  | 10 |
| Clément, St.          | 9              | 2            | 566                                                                 | 66                                                         | 6       | 5                | 66  | 5  | 5  |
| Dundee ..             | 6              | ..           | 171                                                                 | 34                                                         | 7       | 2                | 34  | 7  | 2  |
| Elgin ..              | 3              | ..           | 84                                                                  | 28                                                         | 6       | 4                | 28  | 6  | 4  |
| Godmanchester ..      | 10             | ..           | 353                                                                 | 60                                                         | 12      | 8                | 60  | 12 | 8  |
| Hemmingford ..        | 16             | ..           | 448                                                                 | 71                                                         | 3       | 7                | 71  | 3  | 7  |
| Hinchiubrook ..       | 13             | ..           | 437                                                                 | 40                                                         | 16      | 1                | 40  | 16 | 1  |
| Martine, Ste. ..      | 9              | ..           | 362                                                                 | 78                                                         | 2       | 0                | 78  | 2  | 0  |
| " (Dissentient)       | ..             | 1            | 26                                                                  | 3                                                          | 12      | 6                | 3   | 12 | 6  |
| Russelltown ..        | 12             | ..           | 538                                                                 | 66                                                         | 13      | 0                | 66  | 13 | 0  |
| Timothée, St. ..      | 9              | ..           | 408                                                                 | 80                                                         | 13      | 1                | 80  | 13 | 1  |
| Urbain, St. (Premier) | 3              | ..           | 162                                                                 | 31                                                         | 6       | 2                | 31  | 6  | 2  |
| Ormstown ...          | 13             | ..           | 705                                                                 | 49                                                         | 8       | 8                | 49  | 8  | 8  |
| " (Dissentient) ..    | 4              | ..           | 442                                                                 | 37                                                         | 11      | 4                | 37  | 11 | 4  |
| Total.....            | 114            | 4            | 4887                                                                | 683                                                        | 7       | 10               | 683 | 7  | 10 |

|            |     |     |      |     |     |     |     |     |     |    |
|------------|-----|-----|------|-----|-----|-----|-----|-----|-----|----|
| ...        | ... | ... | ...  | ... | ... | ... | ... | ... | ... |    |
| Total..... | 114 | 4   | 4887 | 442 | 683 | 7   | 10  | 683 | 7   | 10 |
|            |     |     |      |     |     |     |     | 37  | 11  | 4  |

HALF-YEARLY REPORT for the second term of 1849.

COUNTY OF BELLECHASSE.

| Municipalities.               | Schools.      |              | Number of Children attending the Schools from 5 to 16 years of age. | Six months' allowance of the sum allotted to Lower Canada. |         | Amounts granted. |         |    |                 |
|-------------------------------|---------------|--------------|---------------------------------------------------------------------|------------------------------------------------------------|---------|------------------|---------|----|-----------------|
|                               | Commissioners | Dissentient. |                                                                     | £ s. d.                                                    | £ s. d. | £ s. d.          | £ s. d. |    |                 |
| Beaumont ..                   | 4             | ..           | 128                                                                 | 22                                                         | 18      | 1                | 22      | 18 | 1               |
| Berthier ..                   | 3             | ..           | 129                                                                 | 21                                                         | 15      | 0                | 21      | 15 | 0               |
| Charles, St....               | 9             | ..           | 288                                                                 | 49                                                         | 10      | 3                | 49      | 10 | 3               |
| François, St., Rivière du Sud | ..            | ..           | .....                                                               | 32                                                         | 12      | 6                | 32      | 12 | 6               |
| Gervais, St. ...              | 14            | ..           | 440                                                                 | 81                                                         | 3       | 0                | 81      | 3  | 0               |
| Lazarre, St....               | ..            | ..           | .....                                                               | 14                                                         | 16      | 7                | 14      | 16 | 7               |
| Michel, St. ...               | ..            | ..           | .....                                                               | 27                                                         | 10      | 4 $\frac{1}{2}$  | 27      | 10 | 4 $\frac{1}{2}$ |
| " (Village)                   | 3             | ..           | 147                                                                 | 16                                                         | 9       | 6 $\frac{3}{4}$  | 16      | 9  | 6 $\frac{3}{4}$ |
| Standon ..                    | 1             | ..           | 31                                                                  | 4                                                          | 15      | 7                | 4       | 15 | 7               |
| Valier, St. ...               | 6             | ..           | 219                                                                 | 40                                                         | 17      | 3                | 40      | 17 | 3               |
| Total.....                    | 40            | ..           | 1382                                                                | 312                                                        | 8       | 2                | 237     | 8  | 9 $\frac{1}{2}$ |

HALF-YEARLY REPORT for the second term of 1849.

COUNTY OF BERTHIER.

| Municipalities.           | Schools.      |              | Number of Children attending the Schools from 5 to 16 years of age. | Six months' allowance of the sum allotted to Lower Canada. |    |    | Amounts granted. |    |    |
|---------------------------|---------------|--------------|---------------------------------------------------------------------|------------------------------------------------------------|----|----|------------------|----|----|
|                           | Commissioners | Dissentient. |                                                                     | £                                                          | s. | d. | £                | s. | d. |
| Barthélemi, St. ...       | 5             | ..           | 222                                                                 | 38                                                         | 17 | 8  | 38               | 17 | 8  |
| Berthier ...              | 8             | ..           | 455                                                                 | 102                                                        | 16 | 5  | 102              | 16 | 5  |
| Brandon ...               | ..            | ..           | ..                                                                  | 22                                                         | 18 | 1  | 60               | 9  | 5  |
| Cuthbert, St. ...         | 7             | ..           | 269                                                                 | 61                                                         | 12 | 6  | 61               | 12 | 6  |
| Elizabeth, Ste. ...       | 7             | ..           | 359                                                                 | 36                                                         | 19 | 10 | 36               | 19 | 10 |
| Félix, St., de Valois ... | 4             | ..           | 162                                                                 | 21                                                         | 18 | 4  | 21               | 18 | 4  |
| Ile du Pads... ..         | 2             | ..           | 90                                                                  | 36                                                         | 13 | 3  | 36               | 13 | 3  |
| Industrie ...             | 5             | ..           | 186                                                                 | 43                                                         | 1  | 9  | 43               | 1  | 9  |
| Kildare ...               | 5             | 1            | 201                                                                 | 35                                                         | 5  | 3  | 35               | 5  | 3  |
| Lanoraie ...              | 4             | ..           | 149                                                                 | 30                                                         | 9  | 8  | 30               | 9  | 8  |
| Lavalrie ...              | 4             | ..           | 122                                                                 | 23                                                         | 16 | 2  | 23               | 16 | 2  |
| D'Aillebout ...           | 3             | ..           | 76                                                                  | 49                                                         | 5  | 4  | 49               | 5  | 4  |
| Paul, St. ...             | 4             | ..           | 114                                                                 | 28                                                         | 11 | 9  | 28               | 11 | 9  |
| Thomas, St. ...           | 2             | ..           | 101                                                                 | ..                                                         | .. | .. | ..               | .. | .. |
| Total.....                | 60            | 1            | 2506                                                                | 592                                                        | 15 | 5  | 569              | 17 | 4  |





HALF-YEARLY REPORT for the second term of 1849.

COUNTY OF CHAMPLAIN.

| Municipalities.   | Schools.      |              | Number of Children attending the Schools from 5 to 16 years of age. | Six months' allowance of the sum allotted to Lower Canada. |    |    | Amount granted. |
|-------------------|---------------|--------------|---------------------------------------------------------------------|------------------------------------------------------------|----|----|-----------------|
|                   | Commissioners | Dissentient. |                                                                     | £                                                          | s. | d. |                 |
| La Pêrade ...     | 10            | ..           | 324                                                                 | 52                                                         | 6  | 3  | £ 52 6 3        |
| Bâtiscan ...      | 2             | ..           | 136                                                                 | 18                                                         | 4  | 2  | 18 4 2          |
| Champlain ...     | 4             | ..           | 132                                                                 | 33                                                         | 7  | 4  | 33 7 4          |
| Cap La Magdeleine | 3             | ..           | 121                                                                 | 21                                                         | 16 | 8  | 21 16 8         |
| Généviève, Ste.   | 4             | ..           | 167                                                                 | 41                                                         | 2  | 2  | 41 2 2          |
| Maurice, St.      | ..            | ..           | .....                                                               | 16                                                         | 9  | 7  | 16 9 7          |
| Stanislas, St.    | ..            | ..           | .....                                                               | 41                                                         | 7  | 2  | 41 7 2          |
| Total.....        | 23            | ..           | 880                                                                 | 224                                                        | 13 | 4  | 166 16 7        |

HALF-YEARLY REPORT for the second term of 1849.

COUNTY OF TWO MOUNTAINS.

| Municipalities.        | Schools.      |              | Number of Children attending the Schools from 5 to 16 years of age. | Six months' allowance of the sum allotted to Lower Canada. |          | Amounts granted. |           |
|------------------------|---------------|--------------|---------------------------------------------------------------------|------------------------------------------------------------|----------|------------------|-----------|
|                        | Commissioners | Dissentient. |                                                                     | £                                                          | s.       | £                | s.        |
| Argenteuil ...         | 17            | ..           | 599                                                                 | 92                                                         | 0        | 92               | 0         |
| Augustin, St. ...      | ..            | ..           | ..                                                                  | 54                                                         | 14       | 96               | 19        |
| Benoit, St. ...        | 10            | ..           | 462                                                                 | 96                                                         | 19       | 50               | 11        |
| Chatham ...            | 10            | ..           | 249                                                                 | 50                                                         | 11       | 24               | 7         |
| Colomban, St. ...      | 4             | ..           | 139                                                                 | 24                                                         | 7        | 63               | 7         |
| Eustache, St. ...      | 7             | ..           | 320                                                                 | 63                                                         | 7        | 29               | 19        |
| Gore ...               | 6             | ..           | 231                                                                 | 29                                                         | 19       | 47               | 9         |
| Grenville ...          | ..            | ..           | ..                                                                  | 47                                                         | 9        | 37               | 17        |
| Hernas, St....         | 4             | ..           | 175                                                                 | 37                                                         | 17       | 19               | 8         |
| Ile Bizarre ...        | ..            | ..           | ..                                                                  | 19                                                         | 8        | 111              | 12        |
| Scholastique, Ste. ... | 12            | ..           | 390                                                                 | 111                                                        | 12       | 506              | 16        |
| <b>Total.....</b>      | <b>70</b>     | <b>..</b>    | <b>2565</b>                                                         | <b>628</b>                                                 | <b>8</b> | <b>506</b>       | <b>16</b> |

Total.....

70

...

2565

628 8 10

506 16 10

HALF-YEARLY REPORT for the second term of 1849.

COUNTY OF DORCHESTER.

| Municipalities.              | Schools.       |              | Number of Children attending the Schools from 5 to 16 years of age. | Six months' allowance of the sum allotted to Lower Canada. |    |    | Amounts granted. |    |    |
|------------------------------|----------------|--------------|---------------------------------------------------------------------|------------------------------------------------------------|----|----|------------------|----|----|
|                              | Commissioners' | Dissentient. |                                                                     | £                                                          | s. | d. | £                | s. | d. |
| Anselme, St. ....            | ..             | ..           | ....                                                                | 52                                                         | 12 | 10 | ..               | .. | .. |
| Aubers Gallion ..            | ..             | ..           | 91                                                                  | 25                                                         | 2  | 6  | ..               | .. | .. |
| Bernard, St. ....            | ..             | ..           | ....                                                                | 13                                                         | 11 | 11 | ..               | .. | .. |
| Claire, Ste., de Joliette .. | ..             | ..           | ....                                                                | 51                                                         | 14 | 10 | ..               | .. | .. |
| Cranbourne... ..             | ..             | ..           | ....                                                                | 6                                                          | 1  | 11 | ..               | .. | .. |
| Elzéar, St. ....             | ..             | ..           | ....                                                                | 41                                                         | 12 | 1  | ..               | .. | .. |
| Frampton ..                  | ..             | ..           | ....                                                                | 48                                                         | 5  | 7  | ..               | .. | .. |
| François, St., de Beauce ..  | ..             | ..           | 336                                                                 | 51                                                         | 19 | 9  | 51               | 19 | 9  |
| Henri, St., de Lauzon ..     | 10             | ..           | 412                                                                 | 63                                                         | 12 | 0  | 63               | 12 | 0  |
| Isidore, St., de Lauzon ..   | 14             | ..           | ....                                                                | 45                                                         | 1  | 4  | ..               | .. | .. |
| Jean, St., Chrysostôme ..    | 8              | ..           | 289                                                                 | 47                                                         | 5  | 10 | 47               | 5  | 10 |
| Joseph, St., de Beauce ..    | ..             | ..           | ....                                                                | .50                                                        | 1  | 9  | ..               | .. | .. |
| Marie, Ste., de Beauce ..    | ..             | ..           | ....                                                                | 54                                                         | 9  | 1  | ..               | .. | .. |
| " (Village of) ..            | 2              | ..           | 91                                                                  | 12                                                         | 2  | 3  | 12               | 2  | 3  |
| Carried over.....            | 37             | ..           | 1219                                                                | 563                                                        | 13 | 8  | 202              | 2  | 4  |



HALF-YEARLY REPORT for the second term of 1849.

COUNTY OF DORCHESTER—Continuation.

| Municipalities.             | Schools.       |              | Number of Children attending the Schools from 5 to 16 years of age. | Six months' allowance of the sum allotted to Lower Canada. |    |    | Amounts granted. |    |    |
|-----------------------------|----------------|--------------|---------------------------------------------------------------------|------------------------------------------------------------|----|----|------------------|----|----|
|                             | Commissioners. | Dissentient. |                                                                     | £                                                          | s. | d. | £                | s. | d. |
| Brought forward.....        | 37             | ..           | 1219                                                                | 563                                                        | 13 | 8  | 202              | 2  | 4  |
| Metschermet ..              | ..             | ..           | .....                                                               | 12                                                         | 7  | 2  | ..               | .. | .. |
| Marguerite, Ste. ..         | ..             | ..           | .....                                                               | 51                                                         | 13 | 2  | ..               | .. | .. |
| Nicolas, St. ...            | 10             | ..           | 359                                                                 | 58                                                         | 9  | 10 | 58               | 9  | 10 |
| Pointe Lévi... ..           | 14             | ..           | 546                                                                 | 88                                                         | 10 | 11 | 88               | 10 | 11 |
| " (Dissentient) ..          | ..             | 1            | 23                                                                  | 3                                                          | 14 | 7  | 3                | 14 | 7  |
| Premier Rang, St. Joseph... | 3              | ..           | 70                                                                  | 14                                                         | 5  | 1  | 14               | 5  | 1  |
| Total.....                  | 65             | 1            | 2217                                                                | 792                                                        | 14 | 5  | 365              | 2  | 9  |

HALF-YEARLY REPORT for the second term of 1849.

COUNTY OF DRUMMOND,

| Municipalities. | Schools.       |              | Number of Children attending the Schools from 5 to 16 years of age. | Six months' allowance of the sum allotted to Lower Canada. |    |    | Amounts granted. |    |    |
|-----------------|----------------|--------------|---------------------------------------------------------------------|------------------------------------------------------------|----|----|------------------|----|----|
|                 | Commissioners. | Dissentient. |                                                                     | £                                                          | s. | d. | £                | s. | d. |
| Aston           | ..             | ..           | .....                                                               | 5                                                          | 17 | 0  | 25               | 15 | 9  |
| Arthabaska..    | ..             | ..           | 103                                                                 | 25                                                         | 15 | 9  | 42               | 0  | 4  |
| Durham          | ..             | ..           | 246                                                                 | 42                                                         | 0  | 4  | 23               | 9  | 7  |
| Grantham        | ..             | ..           | .....                                                               | 23                                                         | 9  | 7  | 47               | 10 | 9  |
| Kingsey         | ..             | ..           | 235                                                                 | 47                                                         | 10 | 9  | 23               | 19 | 6  |
| Stanford        | ..             | ..           | 101                                                                 | 23                                                         | 19 | 6  | 16               | 14 | 6  |
| Tingwick        | ..             | ..           | .....                                                               | 16                                                         | 14 | 6  | 25               | 12 | 5  |
| Upton           | ..             | ..           | .....                                                               | 25                                                         | 12 | 5  | 7                | 14 | 10 |
| Wickham         | ..             | ..           | .....                                                               | 7                                                          | 14 | 10 |                  |    |    |
| Total.....      | 27             | ..           | 685                                                                 | 218                                                        | 14 | 8  | 139              | 6  | 4  |

HALF-YEARLY REPORT for the second term of 1849.

COUNTY OF GASPE.

| Municipalities.  | Schools.       |              | Number of Children attending the Schools from 5 to 16 years of age. | Six months' allowance of the sum allotted to Lower Canada. |    |    | Amounts granted. |    |    |
|------------------|----------------|--------------|---------------------------------------------------------------------|------------------------------------------------------------|----|----|------------------|----|----|
|                  | Commissioners. | Dissentient. |                                                                     | £                                                          | s. | d. | £                | s. | d. |
| Cap Chat         | ..             | ..           | ..                                                                  | 14                                                         | 14 | 11 | 12               | 7  | 2  |
| Cap Rosier       | ..             | ..           | ..                                                                  | 12                                                         | 7  | 2  | 13               | 3  | 8  |
| Douglas          | ..             | ..           | 20                                                                  | 13                                                         | 3  | 8  | 16               | 9  | 7  |
| Bay North        | ..             | ..           | 44                                                                  | 16                                                         | 9  | 7  | 12               | 7  | 2  |
| Bay South        | ..             | ..           | 19                                                                  | 12                                                         | 7  | 2  | 19               | 15 | 5  |
| Grand River      | ..             | ..           | ..                                                                  | 44                                                         | 3  | 2  | 14               | 16 | 7  |
| Magdalen Islands | ..             | ..           | ..                                                                  | 14                                                         | 16 | 7  | 8                | 4  | 9  |
| Malbaie          | ..             | ..           | 23                                                                  | 8                                                          | 4  | 9  | 21               | 8  | 5  |
| Newport          | ..             | ..           | ..                                                                  | ..                                                         | .. | .. | ..               | .. | .. |
| Percé            | ..             | ..           | ..                                                                  | ..                                                         | .. | .. | ..               | .. | .. |
| Total.....       | 7              | ..           | 156                                                                 | 177                                                        | 10 | 10 | 69               | 4  | 2  |



HALF-YEARLY REPORT for the second term of 1849.

COUNTY OF KAMOURASKA.

| Municipalities. | Schools.       |              | Number of Children attending the Schools from 5 to 16 years of age. | Six months' allowance of the sum allotted to Lower Canada. |         | Amounts granted. |         |    |    |
|-----------------|----------------|--------------|---------------------------------------------------------------------|------------------------------------------------------------|---------|------------------|---------|----|----|
|                 | Commissioners' | Dissentient. |                                                                     | £ s. d.                                                    | £ s. d. | £ s. d.          | £ s. d. |    |    |
| Hélène, Ste. }  | 8              | ..           | 234                                                                 | 78                                                         | 3       | 8                | 78      | 3  | 8  |
| André, St. }    | ..             | ..           | ....                                                                | 64                                                         | 8       | 7                | ..      | .. | .. |
| Anne, Ste. ...  | ..             | ..           | ....                                                                | 35                                                         | 3       | 7                | ..      | .. | .. |
| Denis, St. ...  | 7              | ..           | 201                                                                 | 60                                                         | 12      | 8                | 60      | 12 | 8  |
| Kamouraska      | 6              | ..           | 284                                                                 | 75                                                         | 15      | 11               | 75      | 15 | 11 |
| Paschal, St. .. | 3              | ..           | 113                                                                 | 78                                                         | 18      | 6                | 78      | 18 | 6  |
| Rivière Ouelle  | ..             | ..           | ..                                                                  | ..                                                         | ..      | ..               | ..      | .. | .. |
| Total.....      | 24             | ..           | 832                                                                 | 393                                                        | 2       | 11               | 293     | 10 | 9  |

HALF-YEARLY REPORT for the second term of 1849.

COUNTY OF LISLET.

| Municipalities.                | Schools.      |              | Number of Children attending the Schools from 5 to 16 years of age. | Six months' allowance of the sum allotted to Lower Canada. |    |    | Amounts granted. |    |    |
|--------------------------------|---------------|--------------|---------------------------------------------------------------------|------------------------------------------------------------|----|----|------------------|----|----|
|                                | Commissioners | Dissentient. |                                                                     | £                                                          | s. | d. | £                | s. | d. |
| Cap St. Ignace ..              | ..            | ..           | .....                                                               | 51                                                         | 9  | 10 |                  |    |    |
| Cyrille, St. ... ..            | ..            | ..           | .....                                                               | 17                                                         | 6  | 0  | 11               | 13 | 11 |
| Isle aux Grues ..              | 2             | ..           | 107                                                                 | 11                                                         | 13 | 11 | 52               | 12 | 11 |
| L'Islet .. .. .                | 3             | ..           | 62                                                                  | 26                                                         | 10 | 7  |                  |    |    |
| Pierre, St., Rivière du Sud .. | ..            | ..           | .....                                                               | 70                                                         | 17 | 1  |                  |    |    |
| Port Joli .. .. .              | ..            | ..           | .....                                                               | 64                                                         | 13 | 6  |                  |    |    |
| Roch, St., des Aulnets ..      | ..            | ..           | .....                                                               | 80                                                         | 3  | 3  | 80               | 3  | 3  |
| Thomas, St. .. ..              | ..            | ..           | 518                                                                 |                                                            |    |    |                  |    |    |
| Total.....                     | 14            | ..           | 687                                                                 | 375                                                        | 7  | 1  | 144              | 10 | 1  |

HALF-YEARLY REPORT for the second term of 1849.

COUNTY OF LEINSTER.

| Municipalities.    | Schools.      |              | Number of Children attending the Schools from 5 to 16 years of age. | Six months' allowance of the sum allotted to Lower Canada. |          |          | Amounts granted. |          |          |
|--------------------|---------------|--------------|---------------------------------------------------------------------|------------------------------------------------------------|----------|----------|------------------|----------|----------|
|                    | Commissioners | Dissentient. |                                                                     | £                                                          | s.       | d.       | £                | s.       | d.       |
| Esprit, St. ...    | 7             | ..           | 192                                                                 | 41                                                         | 8        | 10       | 41               | 8        | 10       |
| Jacques, St. ...   | 14            | ..           | 683                                                                 | 128                                                        | 10       | 5        | 128              | 10       | 5        |
| Chenaie, La ...    | 3             | ..           | 110                                                                 | 16                                                         | 16       | 2        | 16               | 16       | 2        |
| L'Assomption ...   | 9             | ..           | 296                                                                 | 79                                                         | 16       | 8        | 79               | 16       | 8        |
| Liri, St. ...      | 4             | ..           | 119                                                                 | 64                                                         | 11       | 10       | 64               | 11       | 10       |
| Mascouche ...      | 7             | ..           | 286                                                                 | 50                                                         | 8        | 5        | 50               | 8        | 5        |
| Rawdon ...         | 12            | ..           | 377                                                                 | 61                                                         | 4        | 3        | 61               | 4        | 3        |
| Repentigny ...     | 4             | ..           | 189                                                                 | 38                                                         | 4        | 6        | 38               | 4        | 6        |
| Roch, St. ...      | 5             | ..           | 267                                                                 | 51                                                         | 14       | 9        | 51               | 14       | 9        |
| Sulpice, St. ...   | 3             | ..           | 126                                                                 | 20                                                         | 8        | 8        | 20               | 8        | 8        |
| <b>Total,.....</b> | <b>68</b>     |              | <b>2645</b>                                                         | <b>553</b>                                                 | <b>4</b> | <b>6</b> | <b>553</b>       | <b>4</b> | <b>6</b> |

HALF-YEARLY REPORT for the second term of 1849.

COUNTY OF LOTBINIÈRE.

| Municipalities.    | Schools.      |              | Number of Children attending the Schools from 5 to 16 years of age. | Six months' allowance of the sum allotted to Lower Canada. |         | Amounts granted. |     |    |    |
|--------------------|---------------|--------------|---------------------------------------------------------------------|------------------------------------------------------------|---------|------------------|-----|----|----|
|                    | Commissioners | Dissentient. |                                                                     | £ s. d.                                                    | £ s. d. | £ s. d.          |     |    |    |
| Antoine, St. ...   | 8             | ...          | 232                                                                 | 66                                                         | 13      | 0                | 66  | 13 | 0  |
| Croix, Ste. ...    | 8             | ...          | 192                                                                 | 47                                                         | 0       | 10               | 47  | 0  | 10 |
| Deschaillos ...    | 3             | ...          | 84                                                                  | 27                                                         | 15      | 3                | 27  | 15 | 3  |
| Flavien, St. ...   | ...           | ...          | .....                                                               | 8                                                          | 1       | 5                |     |    |    |
| Giles, St. ...     | ...           | ...          | .....                                                               | 27                                                         | 8       | 9                |     |    |    |
| Lotbinière ...     | 14            | ...          | 479                                                                 | 67                                                         | 6       | 2                | 67  | 6  | 2  |
| Sylvestre, St. ... | 10            | ...          | 362                                                                 | 85                                                         | 13      | 8                | 85  | 13 | 8  |
| Total.....         | 43            | ...          | 1389                                                                | 329                                                        | 19      | 1                | 294 | 8  | 11 |



HALF-YEARLY REPORT for the second term of 1849.

COUNTY OF MEGANTIC.

| Municipalités.  | Schools.       |              | Number of Children attending the Schools from 5 to 16 years of age. | Six months' allowance of the sum allotted to Lower Canada. |    | Amounts granted. |    |
|-----------------|----------------|--------------|---------------------------------------------------------------------|------------------------------------------------------------|----|------------------|----|
|                 | Commissioners' | Dissentient. |                                                                     | £                                                          | s. | £                | s. |
| Broughton       | 1              | ..           | 31                                                                  | 8                                                          | 11 | 5                | d. |
| Halifax         | 6              | ..           | 170                                                                 | 23                                                         | 9  | 7                | 5  |
| Inverness       | ..             | ..           | .....                                                               | 39                                                         | 9  | 6                | 7  |
| Ireland         | ..             | ..           | .....                                                               | 19                                                         | 12 | 2                | 8  |
| Leeds           | ..             | ..           | .....                                                               | 29                                                         | 2  | 8                | 0  |
| " (Dissentient) | ..             | 1            | 40                                                                  | 5                                                          | 11 | 0                | 0  |
| Somerset        | 4              | ..           | 144                                                                 | 23                                                         | 17 | 10               | 23 |
| Tring           | 2              | ..           | 81                                                                  | 11                                                         | 18 | 11               | 11 |
| Forsyth         | 2              | ..           | 92                                                                  | 7                                                          | 16 | 6                | 6  |
| Lambton         | 3              | ..           | 161                                                                 | 15                                                         | 11 | 5                | 15 |
| Total.....      | 18             | 1            | 719                                                                 | 184                                                        | 1  | 0                | 96 |
|                 |                |              |                                                                     |                                                            |    |                  | 16 |
|                 |                |              |                                                                     |                                                            |    |                  | 8  |

HALF-YEARLY REPORT for the second term of 1849.

COUNTY OF MISSISQUOI.

| Municipalities.  | Schools.       |              | Number of Children attending the Schools from 5 to 16 years of age. | Six months' allowance of the sum allotted to Lower Canada. |    | Amount granted. |    |
|------------------|----------------|--------------|---------------------------------------------------------------------|------------------------------------------------------------|----|-----------------|----|
|                  | Commissioners' | Dissentient. |                                                                     | £                                                          | s. | £               | s. |
| Dunham ...       | 22             | ...          | 508                                                                 | 63                                                         | 10 | 63              | 10 |
| Frelighsburg ... | 9              | ...          | 430                                                                 | 31                                                         | 11 | 31              | 11 |
| Philipsburg ...  | 10             | ...          | 276                                                                 | 34                                                         | 17 | 34              | 17 |
| Stanbridge ...   | 17             | ...          | 509                                                                 | 66                                                         | 8  | 66              | 8  |
| Sutton ...       | 13             | ...          | 423                                                                 | 37                                                         | 6  | 37              | 6  |
| Total.....       | 71             | ...          | 2146                                                                | 233                                                        | 13 | 233             | 13 |

HALF-YEARLY REPORT for the second term of 1849.

COUNTY OF MONTMORENCI.

| Municipalities.   | Schools.       |              | Number of Children attending the Schools from 5 to 16 years of age. | Six months' allowance of the sum allotted to Lower Canada. |    | Amounts granted. |    |
|-------------------|----------------|--------------|---------------------------------------------------------------------|------------------------------------------------------------|----|------------------|----|
|                   | Commissioners' | Dissentient. |                                                                     | £                                                          | s. | £                | s. |
| Côte Beauré       | 2              | ..           | 65                                                                  | 13                                                         | 6  | 11               | d. |
| Château Richer    | 3              | ..           | 114                                                                 | 24                                                         | 6  | 1                | s. |
| Famille, Ste.     | 1              | ..           | 90                                                                  | 17                                                         | 12 | 7                | s. |
| Péréol, St. ...   | ..             | ..           | ..                                                                  | ..                                                         | .. | ..               | d. |
| François, St. ... | 2              | ..           | 61                                                                  | 10                                                         | 10 | 11               | s. |
| Jean, St. ...     | 3              | ..           | 180                                                                 | 26                                                         | 10 | 7                | d. |
| Joachim, St. ...  | 1              | ..           | 40                                                                  | 14                                                         | 6  | 9                | s. |
| L'Ange Gardien,   | 3              | ..           | 102                                                                 | 14                                                         | 14 | 11               | s. |
| Laurent, St. ...  | 3              | ..           | 236                                                                 | 12                                                         | 7  | 2                | d. |
| Pierre, St. ...   | 3              | ..           | 128                                                                 | 16                                                         | 4  | 7                | s. |
| Total,.....       | 21             | ..           | 1016                                                                | 150                                                        | 0  | 6                | s. |

HALF-YEARLY REPORT for the second term of 1849.

COUNTY OF MONTREAL.

| Municipalities.   | Schools.       |              | Number of Children attending the Schools from 5 to 16 years of age. | Six months' allowance of the sum allotted to Lower Canada. |    | Amounts granted. |    |
|-------------------|----------------|--------------|---------------------------------------------------------------------|------------------------------------------------------------|----|------------------|----|
|                   | Commissioners' | Dissentient. |                                                                     | £                                                          | s. | £                | s. |
| Bout de l'Isle    | 2              | ..           | 76                                                                  | 18                                                         | 0  | 18               | 0  |
| City (Catholics)  | 9              | ..           | 400                                                                 | 133                                                        | 8  | 133              | 8  |
| " (Protestants)   | 6              | ..           | 275                                                                 | 69                                                         | 15 | 69               | 15 |
| Côte des Neiges   | 2              | ..           | 83                                                                  | 27                                                         | 10 | 27               | 10 |
| Côte Visitation   | 1              | ..           | 27                                                                  | 2                                                          | 12 | 2                | 12 |
| " (Dissentients)  | ..             | 1            | 28                                                                  | 4                                                          | 10 | 4                | 10 |
| Côteau St. Louis  | 3              | ..           | 136                                                                 | 15                                                         | 13 | 15               | 13 |
| Généviève, Ste.   | 4              | ..           | 176                                                                 | 39                                                         | 2  | 39               | 2  |
| Henri, St. ...    | 2              | 1            | 91                                                                  | 14                                                         | 17 | 14               | 17 |
| Hochelaga         | 2              | ..           | 60                                                                  | 15                                                         | 1  | 15               | 1  |
| Lachine           | 3              | 1            | 153                                                                 | 48                                                         | 7  | 48               | 7  |
| Laurent, St...    | 7              | 1            | 355                                                                 | 60                                                         | 11 | 60               | 11 |
| Longue Pointe     | 3              | ..           | 66                                                                  | 18                                                         | 19 | 18               | 19 |
| Carried over..... | 44             | 4            | 1926                                                                | 466                                                        | 1  | 468              | 10 |
|                   |                |              |                                                                     |                                                            |    |                  | 8  |

HALF-YEARLY REPORT for the second term of 1849.

COUNTY OF MONTREAL—Continued.

| Municipalities.         | Schools.       |              | Number of Children attending the Schools from 5 to 16 years of age. | Six months' allowance of the sum allotted to Lower Canada. |    |    | Amount granted. |    |    |
|-------------------------|----------------|--------------|---------------------------------------------------------------------|------------------------------------------------------------|----|----|-----------------|----|----|
|                         | Commissioners. | Dissentient. |                                                                     | £                                                          | s. | d. | £               | s. | d. |
| Brought forward.....    | 44             | 4            | 1926                                                                | 466                                                        | 1  | 8  | 468             | 10 | 8  |
| Pierre, St. ...         | 2              | ..           | 104                                                                 | 20                                                         | 6  | 11 | 20              | 6  | 11 |
| Pointe aux Trembles ..  | 2              | ..           | 76                                                                  | 21                                                         | 18 | 3  | 21              | 18 | 3  |
| Pointe Claire ..        | 5              | ..           | 201                                                                 | 33                                                         | 9  | 0  | 33              | 9  | 0  |
| Rivière des Prairies .. | 3              | ..           | 112                                                                 | 17                                                         | 15 | 11 | 17              | 15 | 11 |
| Sault au Récollet ..    | 4              | ..           | 175                                                                 | 42                                                         | 6  | 11 | 42              | 6  | 11 |
| Total.....              | 60             | 4            | 2593                                                                | 604                                                        | 7  | 8  | 604             | 7  | 8  |

HALF-YEARLY REPORT for the second term of 1819.

COUNTY OF NICOLET.

| Municipalities. | Schools.       |            | Number of Children attending the Schools from 5 to 16 years of age. | Six months' allowance of the sum allotted to Lower Canada. |       | Amounts granted. |     |       |   |
|-----------------|----------------|------------|---------------------------------------------------------------------|------------------------------------------------------------|-------|------------------|-----|-------|---|
|                 | Commissioners. | Miscentic. |                                                                     | £                                                          | s. d. |                  | £   | s. d. |   |
| Bécancour ..    | 13             | ..         | 556                                                                 | 75                                                         | 19    | 2                | 75  | 19    | 2 |
| Blandford ..    | 2              | ..         | 42                                                                  | 8                                                          | 3     | 2                | 8   | 3     | 2 |
| Gentilly ..     | 8              | ..         | 396                                                                 | 57                                                         | 10    | 1                | 57  | 10    | 1 |
| Grégoire, St... | 12             | ..         | 672                                                                 | 77                                                         | 10    | 6                | 77  | 10    | 6 |
| Monique, Ste.   | ..             | ..         | .....                                                               | 44                                                         | 8     | 2                | 54  | 9     | 2 |
| Nicolet ..      | 7              | ..         | 325                                                                 | 54                                                         | 9     | 2                | 51  | 8     | 2 |
| Pierre, St. ... | 9              | ..         | 342                                                                 | 51                                                         | 8     | 2                | 369 | 8     | 5 |
| Total.....      | 51             | ..         | 2333                                                                | 369                                                        | 8     | 5                | 369 | 0     | 3 |

HALF-YEARLY REPORT for the second term of 1849.

COUNTY OF OTTAWA.

| Municipalities. | Schools.      |              | Number of Children attending the Schools from 5 to 16 years of age. | Six months' allowance of the sum allotted to Lower Canada. |    |    | Amounts granted. |    |    |
|-----------------|---------------|--------------|---------------------------------------------------------------------|------------------------------------------------------------|----|----|------------------|----|----|
|                 | Commissioners | Dissentient. |                                                                     | £                                                          | s. | d. | £                | s. | d. |
| Bristol         | 3             | ..           | 74                                                                  | 12                                                         | 5  | 6  | 12               | 5  | 6  |
| Buckingham      | ..            | ..           | .....                                                               | 25                                                         | 19 | 1  | ..               | .. | .. |
| Clarendon       | ..            | ..           | .....                                                               | 29                                                         | 5  | 0  | ..               | .. | .. |
| Eardley         | ..            | ..           | .....                                                               | 6                                                          | 5  | 2  | ..               | .. | .. |
| Hall            | 8             | ..           | 259                                                                 | 68                                                         | 17 | 6  | 68               | 17 | 6  |
| Litchfield      | 3             | ..           | 84                                                                  | 8                                                          | 15 | 4  | 8                | 15 | 4  |
| Lochaber        | ..            | ..           | 151                                                                 | 16                                                         | 1  | 3  | 16               | 1  | 3  |
| Onslow          | 5             | ..           | .....                                                               | 7                                                          | 10 | 0  | 7                | 10 | 0  |
| Petite Nation   | ..            | ..           | .....                                                               | 42                                                         | 18 | 6  | 42               | 18 | 6  |
| Templeton       | 4             | ..           | 121                                                                 | 19                                                         | 8  | 10 | 19               | 8  | 10 |
| Wakefield       | 1             | ..           | 17                                                                  | 11                                                         | 18 | 11 | 11               | 18 | 11 |
| Allumettes      | 1             | ..           | 26                                                                  | 8                                                          | 1  | 0  | 8                | 1  | 0  |
| Calumet         | 1             | ..           | 17                                                                  | 13                                                         | 8  | 4  | 13               | 8  | 4  |
| Total.....      | 26            | ..           | 749                                                                 | 270                                                        | 14 | 5  | 158              | 16 | 8  |

HALF-YEARLY REPORT for the second term of 1843.

COUNTY OF PORTNEUF.

| Municipalities.      | Schools.       |              | Number of Children attending the Schools from 5 to 16 years of age. | Six months' allowance of the sum allotted to Lower Canada. |    |    | Amounts granted. |    |    |
|----------------------|----------------|--------------|---------------------------------------------------------------------|------------------------------------------------------------|----|----|------------------|----|----|
|                      | Commissioners. | Dissentient. |                                                                     | £                                                          | s. | d. | £                | s. | d. |
| Ancienne Lorette ... | 6              | ...          | 355                                                                 | 41                                                         | 3  | 10 | 41               | 3  | 10 |
| Augustin, St. ...    | 4              | ...          | 192                                                                 | 28                                                         | 8  | 5  | 28               | 8  | 5  |
| Basile, St. ...      | ...            | ...          | ...                                                                 | 16                                                         | 9  | 6  | 66               | 3  | 2  |
| Cap Santé ...        | 9              | ...          | 306                                                                 | 66                                                         | 3  | 2  | 16               | 9  | 6  |
| Casimir, St... ..    | 4              | ...          | 100                                                                 | 16                                                         | 9  | 6  | 42               | 6  | 11 |
| Catherine, Ste. ...  | 6              | ...          | 250                                                                 | 42                                                         | 6  | 11 | 10               | 12 | 6  |
| Deschambault ...     | 1              | ...          | 74                                                                  | 10                                                         | 12 | 6  | 26               | 7  | 4  |
| Ecoreuils ...        | 5              | ...          | 153                                                                 | 26                                                         | 7  | 4  | 37               | 8  | 1  |
| Grondives ...        | 4              | ...          | 181                                                                 | 23                                                         | 16 | 3  | 28               | 16 | 3  |
| Pointe-aux-Trembles  | 3              | ...          | 109                                                                 | 352                                                        | 5  | 8  | 292              | 16 | 0  |
| Raymond, St. ...     | 42             | ...          | 1720                                                                |                                                            |    |    |                  |    |    |
| Total.....           | 42             | ...          | 1720                                                                |                                                            |    |    |                  |    |    |



HALF-YEARLY REPORT for the second term of 1949.

COUNTY OF QUEBEC.

| Municipalities.      | Schools.       |              | Number of Children attending the Schools from 5 to 16 years of age. | Six months' allowance of the sum allotted to Lower Canada. |    | Amount granted. |         |
|----------------------|----------------|--------------|---------------------------------------------------------------------|------------------------------------------------------------|----|-----------------|---------|
|                      | Commissioners. | Dissentient. |                                                                     | £                                                          | s. | £               | s.      |
| Ambroise, St. ...    | 8              | ...          | 578                                                                 | 49                                                         | 7  | 0               | 0       |
| Beauport ...         | 6              | ...          | 283                                                                 | 47                                                         | 0  | 10              | 10      |
| City (Catholics) ... | 15             | ...          | 1767                                                                | 288                                                        | 3  | 2               | 2       |
| " (Protestants) ...  | 4              | ...          | 185                                                                 | 95                                                         | 8  | 8               | 8       |
| Charlesbourg ...     | 5              | ...          | 183                                                                 | 36                                                         | 19 | 10              | 10      |
| Dunstan, St. ...     | ...            | ...          | .....                                                               | 8                                                          | 18 | 2               | ...     |
| Foye, Ste. ...       | 2              | ...          | 83                                                                  | 29                                                         | 13 | 3               | 3       |
| Roch, St. ...        | ...            | ...          | .....                                                               | 23                                                         | 17 | 11              | ...     |
| Stadacona ...        | ...            | ...          | .....                                                               | 30                                                         | 17 | 11              | ...     |
| Stoneham ...         | ...            | 1            | 46                                                                  | 8                                                          | 19 | 8               | 9       |
| Valcartier ...       | ...            | ...          | .....                                                               | 30                                                         | 19 | 8               | ...     |
| Total.....           | 40             | 1            | 2925                                                                | 650                                                        | 6  | 1               | 550 8 6 |

HALF-YEARLY REPORT for the second term of 1849.

COUNTY OF RICHELIEU.

| Municipalities.      | Schools.       |              | Number of Children attending the Schools from 5 to 16 years of age. | Six months' allowance of the sum allotted to Lower Canada. |    |    | Amounts granted. |    |    |
|----------------------|----------------|--------------|---------------------------------------------------------------------|------------------------------------------------------------|----|----|------------------|----|----|
|                      | Commissioners. | Dissentient. |                                                                     | £                                                          | s. | d. | £                | s. | d. |
| Aimé, St. ...        | 7              | ..           | 250                                                                 | 73                                                         | 16 | 5  | 73               | 16 | 5  |
| Bourg de Sorel       | 2              | ..           | 389                                                                 | 47                                                         | 19 | 10 | 47               | 19 | 10 |
| Barnabé, St. ...     | 2              | ..           | 119                                                                 | 31                                                         | 16 | 0  | 31               | 16 | 0  |
| Charles, St. ...     | 4              | ..           | 142                                                                 | 33                                                         | 4  | 1  | 33               | 4  | 1  |
| Denis, St. ...       | 9              | ..           | 47                                                                  | 63                                                         | 7  | 1  | 63               | 7  | 1  |
| Jude, St. ...        | 5              | ..           | 118                                                                 | 31                                                         | 6  | 2  | 31               | 6  | 2  |
| Ours, St. ...        | 6              | ..           | 291                                                                 | 67                                                         | 7  | 10 | 67               | 7  | 10 |
| Sorel                | 12             | ..           | 335                                                                 | 57                                                         | 15 | 9  | 57               | 15 | 9  |
| " (Dissentients) ... | ..             | 2            | 97                                                                  | 11                                                         | 17 | 4  | 11               | 17 | 4  |
| Victoire, Ste. ...   | 3              | ..           | 119                                                                 | 52                                                         | 14 | 6  | 52               | 14 | 6  |
| Total.....           | 50             | 2            | 2561                                                                | 471                                                        | 5  | 0  | 471              | 5  | 0  |

HALF-YEARLY REPORT for the second term of 1919.

COUNTY OF RIMOUSKI.

| Municipalities.    | Schools.      |              | Number of Children attending the Schools from 5 to 16 years of age. | Six months' allowance of the sum allotted to Lower Canada. |    | Amounts granted. |    |
|--------------------|---------------|--------------|---------------------------------------------------------------------|------------------------------------------------------------|----|------------------|----|
|                    | Commissioners | Dissentient. |                                                                     | £                                                          | s  | £                | s  |
| Bic ...            | 3             | ...          | 70                                                                  | 17                                                         | 6  | 17               | 6  |
| Isle Verte ...     | 5             | ...          | 190                                                                 | 57                                                         | 18 | 57               | 18 |
| Kakouma—St. Arsène | 5             | ...          | 246                                                                 | 48                                                         | 6  | 48               | 6  |
| “ St. George       | 2             | ...          | 120                                                                 | 33                                                         | 11 | 33               | 11 |
| Lessard ...        | 4             | ...          | 132                                                                 | 27                                                         | 12 | 27               | 12 |
| Lepage ...         | ...           | ...          | .....                                                               | 21                                                         | 3  | 21               | 3  |
| Matane ...         | ...           | ...          | .....                                                               | 11                                                         | 17 | 11               | 17 |
| Métis ...          | 3             | ...          | 66                                                                  | 8                                                          | 6  | 8                | 6  |
| Rimouski ...       | 10            | ...          | 340                                                                 | 65                                                         | 11 | 65               | 11 |
| Rivière du Loup    | 6             | ...          | 204                                                                 | 69                                                         | 7  | 69               | 7  |
| Simon, St. ...     | 6             | ...          | 172                                                                 | 34                                                         | 15 | 34               | 15 |
| Trois Pistoles     | 8             | ...          | 263                                                                 | 65                                                         | 11 | 65               | 11 |
| Total.....         | 52            | ...          | 1803                                                                | 461                                                        | 7  | 428              | 6  |

HALF-YEARLY REPORT for the second term of 1849.

COUNTY OF ROUVILLE.

| Municipalities.    | Schools.      |             | Number of Children attending the Schools from 5 to 16 years of age. | Six months' allowance of the sum allotted to Lower Canada. |    | Amounts granted. |     |    |    |
|--------------------|---------------|-------------|---------------------------------------------------------------------|------------------------------------------------------------|----|------------------|-----|----|----|
|                    | Commissioners | Dissenting. |                                                                     | £                                                          | s. | £                | s.  |    |    |
| Athanase, St.      | 14            | 2           | 637                                                                 | 107                                                        | 7  | 0                | 107 | 7  | 0  |
| Brigite, Ste.      | 5             | ..          | 227                                                                 | 26                                                         | 13 | 10               | 26  | 13 | 10 |
| Clarenceville      | 9             | ..          | 321                                                                 | 27                                                         | 18 | 7                | 27  | 18 | 7  |
| Foucalt            | 6             | ..          | 169                                                                 | 23                                                         | 7  | 11               | 23  | 7  | 11 |
| Grégoire, St.      | 5             | ..          | 245                                                                 | 51                                                         | 14 | 9                | 51  | 14 | 9  |
| Henriville         | 17            | ..          | 527                                                                 | 87                                                         | 11 | 7                | 87  | 11 | 7  |
| Jean Baptiste, St. | 7             | ..          | 229                                                                 | 47                                                         | 5  | 9                | 47  | 5  | 9  |
| Marie, Ste.        | 8             | ..          | 417                                                                 | 107                                                        | 2  | 1                | 107 | 2  | 1  |
| Mathias, St.       | 5             | ..          | 191                                                                 | 49                                                         | 0  | 5                | 49  | 0  | 5  |
| Rouville, ..       | 4             | ..          | 146                                                                 | 28                                                         | 3  | 6                | 28  | 3  | 6  |
| Total.....         | 80            | 2           | 3109                                                                | 556                                                        | 5  | 5                | 556 | 5  | 5  |



HALF-YEARLY REPORT for the second term of 1849.

COUNTY OF ST. HYACINTHE.

| Municipalities. | Schools.       |              | Number of Children attending the Schools from 5 to 16 years of age. | Six months' allowance of the sum allotted to Lower Canada. |    | Amounts granted. |      |
|-----------------|----------------|--------------|---------------------------------------------------------------------|------------------------------------------------------------|----|------------------|------|
|                 | Commissioners. | Dissentient. |                                                                     | £                                                          | s. | £                | s.   |
| Abbotsford      | 5              | ..           | 86                                                                  | 7                                                          | 7  | 7                | d.   |
| Césaire, St ... | 16             | ..           | 611                                                                 | 103                                                        | 9  | 103              | 9 11 |
| Damas, St...    | 10             | ..           | 298                                                                 | 66                                                         | 1  | 66               | 1 6  |
| Dominique, St.  | 5              | ..           | 197                                                                 | 22                                                         | 13 | 22               | 13 1 |
| Hugues, St...   | 5              | ..           | 225                                                                 | 35                                                         | 13 | 35               | 13 6 |
| Hyacinthe, St.  | 19             | ..           | 554                                                                 | 92                                                         | 12 | 92               | 12 1 |
| Pie, St. ...    | 13             | ..           | 448                                                                 | 48                                                         | 17 | 48               | 17 1 |
| La Présentation | 4              | ..           | 191                                                                 | 35                                                         | 3  | 35               | 3 7  |
| Rosalie, Ste.   | 3              | ..           | 118                                                                 | 31                                                         | 4  | 31               | 4 6  |
| Simon, St. ...  | 4              | ..           | 203                                                                 | 33                                                         | 5  | 33               | 5 8  |
| Total.....      | 84             | ..           | 2931                                                                | 476                                                        | 10 | 476              | 10 6 |



HALF-YEARLY REPORT for the second term of 1849.

COUNTY OF SHEFFORD.

| Municipalities.  | Schools.       |              | Number of Children attending the Schools from 5 to 16 years of age. | Six months' allowance of the sum allotted to Lower Canada. |    |                  | Amounts granted. |    |                  |
|------------------|----------------|--------------|---------------------------------------------------------------------|------------------------------------------------------------|----|------------------|------------------|----|------------------|
|                  | Commissioners. | Dissentient. |                                                                     | £                                                          | s. | d.               | £                | s. | d.               |
| Brome            | 18             | ..           | 483                                                                 | 39                                                         | 17 | 6                | 39               | 17 | 6                |
| Ely              | ..             | ..           | .....                                                               | 9                                                          | 16 | 1                | 46               | 11 | 0                |
| Farnham          | 14             | ..           | 406                                                                 | 46                                                         | 11 | 0                | 31               | 6  | 1 $\frac{1}{2}$  |
| Granby           | 13             | ..           | 298                                                                 | 31                                                         | 6  | 1 $\frac{1}{2}$  | 3                | 10 | 10 $\frac{1}{2}$ |
| " (Dissentients) | ..             | 1            | 59                                                                  | 3                                                          | 10 | 10 $\frac{1}{2}$ | 23               | 1  | 4                |
| Milton           | 4              | 2            | 183                                                                 | 23                                                         | 1  | 4                | 39               | 14 | 2                |
| Shefford         | 15             | ..           | 437                                                                 | 39                                                         | 14 | 2                | 4                | 9  | 0                |
| " (Dissentients) | ..             | 1            | 32                                                                  | 4                                                          | 9  | 0                | 22               | 3  | 3                |
| Stukeley         | ..             | ..           | .....                                                               | 22                                                         | 3  | 3                | 220              | 9  | 4                |
| Total.....       | 64             | 4            | 1898                                                                | 220                                                        | 9  | 4                | 188              | 10 | 0                |



HALF-YEARLY REPORT for the second term of 1849

COUNTY OF SHERBROOKE.

| Municipalities. | Schools.       |             | Number of Children attending the Schools from 5 to 16 years of age. | Six months' allowance of the sum allotted to Lower Canada. |    | Amounts granted. |    |
|-----------------|----------------|-------------|---------------------------------------------------------------------|------------------------------------------------------------|----|------------------|----|
|                 | Commissioners. | Dissenters. |                                                                     | £                                                          | s. | £                | s. |
| Ascot           | 12             | ..          | 321                                                                 | 54                                                         | 9  | 1                | 1  |
| Brompton        | ..             | ..          | .....                                                               | 8                                                          | 9  | 9                | 6  |
| Bury...         | 3              | ..          | 76                                                                  | 28                                                         | 3  | 6                | 6  |
| Compton         | 15             | ..          | 697                                                                 | 52                                                         | 12 | 10               | 10 |
| Dods-well       | 5              | ..          | 82                                                                  | 10                                                         | 14 | 2                | 2  |
| Eaton           | 10             | ..          | 368                                                                 | 45                                                         | 9  | 6                | 6  |
| Harcford        | 4              | ..          | 58                                                                  | 16                                                         | 11 | 2                | 2  |
| Melbourne       | 11             | ..          | 218                                                                 | 35                                                         | 0  | 4                | 4  |
| Shipton         | 15             | ..          | 298                                                                 | 51                                                         | 13 | 2                | 2  |
| Windsor         | ..             | ..          | .....                                                               | 6                                                          | 18 | 8                | 8  |
| Total.....      | 75             | ..          | 2118                                                                | 309                                                        | 2  | 2                | 2  |
|                 |                |             |                                                                     | 294                                                        | 13 | 9                | 9  |

Municipalities.

Total.....

HALF-YEARLY REPORT for the second term of 1849.

COUNTY OF STANSTEAD.

| Municipalities. | Schools.       |             | Number of Children attending the Schools from 5 to 16 years of age. | Six months' allowance of the sum allotted to Lower Canada. |    | Amounts granted. |    |
|-----------------|----------------|-------------|---------------------------------------------------------------------|------------------------------------------------------------|----|------------------|----|
|                 | Commissioners' | Dissemtent. |                                                                     | £                                                          | s. | £                | s. |
| Barnston        | 22             | ..          | 400                                                                 | 62                                                         | 12 | 62               | 12 |
| Bolton          | 14             | ..          | 320                                                                 | 31                                                         | 2  | 31               | 2  |
| Potton          | 12             | ..          | 242                                                                 | 29                                                         | 14 | 29               | 14 |
| Hatley          | 13             | ..          | 342                                                                 | 41                                                         | 15 | 41               | 15 |
| Stanstead       | 30             | ..          | 974                                                                 | 85                                                         | 18 | 85               | 18 |
| Total.....      | 91             | ..          | 2258                                                                | 251                                                        | 73 | 251              | 73 |

HALF-YEARLY REPORT for the second term of 1849.

COUNTY OF TERREBONNE.

| Municipalities.         | Schools.      |              | Number of Child-<br>ren attending the<br>Schools from 5 to<br>16 years of age. | Number of Child-<br>ren attending the<br>Schools from 5 to<br>16 years of age. | Number of Child-<br>ren attending the<br>Schools from 5 to<br>16 years of age. |                  | Amounts granted.       |
|-------------------------|---------------|--------------|--------------------------------------------------------------------------------|--------------------------------------------------------------------------------|--------------------------------------------------------------------------------|------------------|------------------------|
|                         | Commissioners | Dissentient. |                                                                                |                                                                                | £                                                                              | s.               |                        |
| Anne, Ste., des Plaines | 3             | ..           | 172                                                                            | 36                                                                             | 5                                                                              | 0                | 36 5 0                 |
| François, St., de Sales | 3             | ..           | 95                                                                             | 19                                                                             | 8                                                                              | 10               | 19 8 10                |
| Jérôme, St....          | 8             | ..           | 186                                                                            | 72                                                                             | 19                                                                             | 10               | 72 19 10               |
| " No. 4                 | ..            | ..           | .....                                                                          | 14                                                                             | 5                                                                              | 1                | 14 5 1                 |
| Janvier, St. ...        | 1             | ..           | 47                                                                             | 5                                                                              | 8                                                                              | 9                | 5 8 9                  |
| " No. 2                 | 2             | ..           | 81                                                                             | 10                                                                             | 10                                                                             | 11               | 10 10 11               |
| " Village               | 3             | ..           | 119                                                                            | 37                                                                             | 9                                                                              | 9                | 37 9 9                 |
| 'Terrebonne ...         | 4             | ..           | 155                                                                            | 26                                                                             | 15                                                                             | 6                | 26 15 6                |
| Lacorne                 | 5             | ..           | 296                                                                            | 52                                                                             | 7                                                                              | 4 $\frac{1}{2}$  | 52 7 4 $\frac{1}{2}$   |
| Martin, St. ...         | 8             | ..           | 298                                                                            | 54                                                                             | 7                                                                              | 6                | 54 7 6                 |
| Rose, Ste. ...          | 5             | ..           | 185                                                                            | 59                                                                             | 12                                                                             | 10 $\frac{1}{2}$ | 59 12 10 $\frac{1}{2}$ |
| Thérèse, Ste. ...       | ..            | 1            | 40                                                                             | 2                                                                              | 19                                                                             | 4 $\frac{1}{2}$  | 2 19 4 $\frac{1}{2}$   |
| " Dissentients          | 5             | ..           | 223                                                                            | 45                                                                             | 9                                                                              | 6                | 45 9 6                 |
| Vincent de Paul, St...  | 1             | ..           | 38                                                                             | 8                                                                              | 6                                                                              | 6                | 8 6 6                  |
| Côte St. Elzéar         | 1             | ..           | 38                                                                             | 9                                                                              | 1                                                                              | 3                | 9 1 3                  |
| Bord de l'Eau           | 3             | ..           | 172                                                                            | 11                                                                             | 18                                                                             | 11 $\frac{1}{2}$ | 11 18 11 $\frac{1}{2}$ |
| Mille Isles             | ..            | ..           | ..                                                                             | ..                                                                             | ..                                                                             | ..               | ..                     |
| Total.....              | 52            | 1            | 2145                                                                           | 467                                                                            | 7                                                                              | 6                | 453 2 5                |

HALF-YEARLY REPORT for the second term of 1849.

COUNTY OF VAUDREUIL.

| Municipalities.     | Schools.       |              | Nombre d'enfants de 5 à 16 ans fréquentant les écoles. | Six months' allowance of the sum allotted to Lower Canada. |    | Amounts granted. |    |
|---------------------|----------------|--------------|--------------------------------------------------------|------------------------------------------------------------|----|------------------|----|
|                     | Commissioners' | Dissentient. |                                                        | £                                                          | s. | £                | s. |
| Côteau du Lac       | 8              | ...          | 311                                                    | 68                                                         | 15 | 68               | 15 |
| Isle Perrot         | 3              | ...          | 63                                                     | 23                                                         | 1  | 23               | 1  |
| Marthe, Ste...      | 4              | ...          | 162                                                    | 26                                                         | 15 | 26               | 15 |
| Newton              | 7              | ...          | 42                                                     | 9                                                          | 6  | 9                | 6  |
| New Longueuil       | ...            | ...          | 289                                                    | 62                                                         | 7  | 62               | 7  |
| " (Dissentients)    | 9              | 1            | 45                                                     | 4                                                          | 18 | 4                | 18 |
| Rigaud              | ...            | ...          | 385                                                    | 69                                                         | 12 | 69               | 12 |
| " (Dissentients)    | 5              | 1            | 57                                                     | 1                                                          | 17 | 1                | 17 |
| Soulanges           | 9              | ...          | 262                                                    | 47                                                         | 19 | 47               | 19 |
| Vaudreuil           | 3              | ...          | 347                                                    | 69                                                         | 10 | 69               | 10 |
| St. Jacques, St.... | ...            | ...          | 145                                                    | 31                                                         | 19 | 31               | 19 |
| Total.....          | 49             | 2            | 2108                                                   | 416                                                        | 4  | 416              | 4  |

HALF-YEARLY REPORT for the second term of 1849.

COUNTY OF VERCHÈRES.

| Municipalities. | Schools.       |              | Number of Children attending the Schools from 5 to 16 years of age. | Six months' allowance of the sum allotted to Lower Canada. |    | Amount granted. |     |    |    |
|-----------------|----------------|--------------|---------------------------------------------------------------------|------------------------------------------------------------|----|-----------------|-----|----|----|
|                 | Commissioners. | Dissentient. |                                                                     | £                                                          | s. | d.              | £   | s. | d. |
| Antoine, St...  | 5              | ..           | 166                                                                 | 33                                                         | 13 | 11              | 33  | 13 | 11 |
| Belœil ..       | 5              | ..           | 281                                                                 | 43                                                         | 18 | 3               | 43  | 18 | 3  |
| Contrecoeur...  | 4              | ..           | 219                                                                 | 44                                                         | 6  | 6               | 44  | 6  | 6  |
| Marc, St, ..    | 3              | ..           | 170                                                                 | 24                                                         | 9  | 4               | 24  | 9  | 4  |
| Varènes ..      | 8              | ..           | 287                                                                 | 86                                                         | 0  | 3               | 86  | 0  | 3  |
| Verchères ..    | 3              | ..           | 195                                                                 | 51                                                         | 11 | 6               | 51  | 11 | 6  |
| Total.....      | 28             | ..           | 1318                                                                | 283                                                        | 19 | 9               | 283 | 19 | 9  |

HALF-YEARLY REPORT for the second term of 1849.

COUNTY OF YAMASKA.

| Municipalities.      | Schools.            |                | Number of Children attending the Schools from 5 to 16 years of age. | Six months' allowance of the sum allotted to Lower Canada |    |    | Amount granted. |    |    |
|----------------------|---------------------|----------------|---------------------------------------------------------------------|-----------------------------------------------------------|----|----|-----------------|----|----|
|                      | Teachers' salaries. | Disbursements. |                                                                     | £                                                         | s. | d. | £               | s. | d. |
| Baie du Fyvre        | ..                  | ..             | 396                                                                 | 73                                                        | 18 | 0  | 73              | 18 | 0  |
| David, St. ...       | ..                  | ..             | 283                                                                 | 52                                                        | 1  | 5  | 52              | 1  | 5  |
| François du Lac, St. | ..                  | ..             | 512                                                                 | 87                                                        | 18 | 1  | 87              | 18 | 1  |
| Yamaska              | ..                  | ..             | .....                                                               | 53                                                        | 16 | 0  |                 |    |    |
| Séphyrin, St.        | ..                  | ..             | .....                                                               | 16                                                        | 14 | 6  |                 |    |    |
| Total.....           | 30                  | ..             | 1191                                                                | 284                                                       | 8  | 0  | 213             | 17 | 6  |

## RECAPITULATION for the last six months of 1849.

| Counties.          | Amount allotted. |       | Amounts granted. |       | Schools.       |             | Number of children. |
|--------------------|------------------|-------|------------------|-------|----------------|-------------|---------------------|
|                    | £                | s. d. | £                | s. d. | Commissioners' | Dissenting. |                     |
| Beauharnais        | 683              | 7 10  | 683              | 7 10  | 114            | 4           | 4887                |
| Bellechasse ...    | 312              | 8 2   | 237              | 8 9½  | 40             | ..          | 1382                |
| Berthier ...       | 592              | 15 5  | 569              | 17 4  | 60             | 1           | 2506                |
| Bonaventure ...    | 167              | 14 9  | 159              | 10 0  | 16             | 1           | 517                 |
| Chambly ...        | 400              | 11 3  | 400              | 11 3  | 39             | 2           | 2110                |
| Champlain ...      | 224              | 13 4  | 166              | 16 7  | 23             | ..          | 880                 |
| Deux-Montagnes ... | 628              | 8 10  | 506              | 16 10 | 70             | ..          | 2565                |
| Dorchester ...     | 792              | 14 5  | 365              | 2 9   | 65             | 1           | 2217                |
| Drummond ...       | 218              | 14 8  | 139              | 6 4   | 27             | ..          | 685                 |
| Gaspé ...          | 177              | 10 10 | 69               | 4 2   | 7              | ..          | 156                 |
| Huntingdon...      | 796              | 3 10  | 796              | 3 10  | 92             | 2           | 4496                |
| Kamouraska ...     | 393              | 2 11  | 293              | 10 9  | 24             | ..          | 832                 |
| L'Islet ...        | 375              | 7 1   | 144              | 10 1  | 14             | ..          | 687                 |
| Leinster ...       | 553              | 4 6   | 553              | 4 6   | 68             | ..          | 2645                |
| Lotbinière ...     | 329              | 19 1  | 294              | 8 11  | 43             | ..          | 1339                |
| Mégantic ...       | 184              | 1 0   | 96               | 16 8  | 18             | 1           | 719                 |
| Missisquoi ...     | 233              | 13 0  | 233              | 13 0  | 71             | ..          | 2146                |
| Montmorency ...    | 164              | 3 11  | 150              | 0 6   | 21             | ..          | 1016                |
| Montreal ...       | 604              | 7 8   | 604              | 7 8   | 60             | 4           | 2593                |





HALF-YEARLY REPORT for the first six months of 1850.

COUNTY OF BEAUHARNAIS.

| Municipalities.   | Schools.       |              | Number of (Child-Schools from 5 to 16 years of age. | Six months' allowance of the sum allotted to Lower Canada. |    | Amount granted. |    |
|-------------------|----------------|--------------|-----------------------------------------------------|------------------------------------------------------------|----|-----------------|----|
|                   | Commissioners. | Dissentient. |                                                     | £                                                          | d. | £               | d. |
| Amoret, St. ...   | 13             | ..           | 228                                                 | 32                                                         | 6  | 31              | 8  |
| " Dissentients .. | ..             | 1            | 15                                                  | 2                                                          | 2  | 6               | 6  |
| Clément, St. ...  | 9              | 2            | 608                                                 | 66                                                         | 6  | 5               | 5  |
| Duvallee ..       | 6              | ..           | 171                                                 | 34                                                         | 7  | 2               | 2  |
| Elgin ..          | 3              | ..           | 94                                                  | 26                                                         | 5  | 6               | 6  |
| Godmanchester ..  | 11             | ..           | 465                                                 | 59                                                         | 11 | 11              | 11 |
| " Dissentients .. | ..             | 1            | 33                                                  | 3                                                          | 1  | 6               | 6  |
| Henningsford ..   | 19             | ..           | 520                                                 | 71                                                         | 3  | 7               | 7  |
| Hislinbrooke ..   | 15             | ..           | 442                                                 | 40                                                         | 16 | 1               | 1  |
| Martine, St. ...  | 10             | ..           | 456                                                 | 76                                                         | 19 | 11              | 11 |
| " Dissentients .. | ..             | 1            | 28                                                  | 4                                                          | 14 | 7               | 7  |
| Ormstown ..       | 14             | ..           | 731                                                 | 74                                                         | 4  | 2               | 2  |
| " Dissentients .. | ..             | 3            | 126                                                 | 12                                                         | 15 | 10              | 10 |
| Rossetown ..      | 12             | ..           | 538                                                 | 66                                                         | 13 | 0               | 0  |
| Tanothé, St. ...  | 8              | ..           | 428                                                 | 80                                                         | 13 | 1               | 1  |
| Urban, St. ...    | 3              | ..           | 181                                                 | 26                                                         | 4  | 8               | 8  |
| " Dissentients .. | ..             | 1            | 35                                                  | 5                                                          | 1  | 5               | 5  |
| Total .....       | 123            | 9            | 5090                                                | 688                                                        | 7  | 10              | 10 |

HALF-YEARLY REPORT for the first six months of 1850.

COUNTY OF BELLECHASSE.

| Municipalities.    | Schools.      |              | Number of Children attending the Schools from 5 to 16 years of age. | Six months' allowance of the sum allotted to Lower Canada. |          | Amount granted. |            |          |           |
|--------------------|---------------|--------------|---------------------------------------------------------------------|------------------------------------------------------------|----------|-----------------|------------|----------|-----------|
|                    | Committeemen. | Assessments. |                                                                     | £                                                          | s. d.    | £               | s. d.      |          |           |
| Beaumont ...       | 4             | ...          | 128                                                                 | 22                                                         | 18       | 1               | 22         | 18       | 1         |
| Beuthier ...       | 3             | ...          | 108                                                                 | 21                                                         | 15       | 0               | 21         | 15       | 0         |
| Charles, St... ..  | 9             | ...          | 346                                                                 | 49                                                         | 10       | 3               | 49         | 10       | 3         |
| François, St... .. | 8             | ...          | 215                                                                 | 32                                                         | 12       | 6               | 32         | 12       | 6         |
| Ge. vai's, St ...  | 14            | ...          | 440                                                                 | 81                                                         | 3        | 0               | 81         | 3        | 0         |
| Lazarre, St... ..  | ...           | ...          | ...                                                                 | 14                                                         | 16       | 7               | ...        | ...      | ...       |
| Michel, St. ...    | ...           | ...          | ...                                                                 | 27                                                         | 10       | 4               | ...        | ...      | ...       |
| " Village ...      | 3             | ...          | 147                                                                 | 16                                                         | 9        | 6½              | 16         | 9        | 6½        |
| Standon ...        | 1             | ...          | 31                                                                  | 4                                                          | 15       | 7               | 4          | 15       | 7         |
| Valier, St. ...    | 6             | ...          | 233                                                                 | 40                                                         | 17       | 3               | 40         | 17       | 3         |
| <b>Total.....</b>  | <b>48</b>     | <b>...</b>   | <b>1648</b>                                                         | <b>312</b>                                                 | <b>8</b> | <b>2½</b>       | <b>270</b> | <b>1</b> | <b>2½</b> |

THE COUNTY OF BELLECHASSE, CANADA, APRIL 1850.

HALF-YEARLY REPORT for the first six months of 1850.

COUNTY OF BERTHIER.

| Municipalities.       | Schools.      |              | Number of Children attending the Schools from 5 to 16 years of age. | Six months' allowance of the sum allotted to Lower Canada. |    | Amount granted. |    |
|-----------------------|---------------|--------------|---------------------------------------------------------------------|------------------------------------------------------------|----|-----------------|----|
|                       | Commissioners | Dissentient. |                                                                     | £                                                          | s. | £               | s. |
| Barthélemi, St.       | 5             | ..           | 226                                                                 | 38                                                         | 17 | 38              | 17 |
| Berthier ..           | 8             | ..           | 502                                                                 | 102                                                        | 16 | 102             | 16 |
| Brandon ..            | 7             | ..           | .....                                                               | 22                                                         | 18 | 60              | 9  |
| Cuthbert, St.         | 6             | ..           | 280                                                                 | 60                                                         | 9  | 61              | 12 |
| Elisabeth, Ste.       | 4             | ..           | 400                                                                 | 61                                                         | 12 | 36              | 19 |
| Félix, St., de Valois | 2             | ..           | 157                                                                 | 36                                                         | 19 | 21              | 18 |
| Isle-du-Pads ..       | 5             | ..           | 85                                                                  | 21                                                         | 18 | 36              | 18 |
| Industrie ..          | 5             | 1            | 228                                                                 | 36                                                         | 18 | 43              | 1  |
| Kildare ..            | 4             | ..           | 258                                                                 | 43                                                         | 1  | 35              | 5  |
| Laporaie ..           | 4             | ..           | 140                                                                 | 35                                                         | 5  | 30              | 9  |
| Lavaltrie ..          | 4             | ..           | 143                                                                 | 30                                                         | 9  | 23              | 16 |
| D'Aillebout ..        | 3             | ..           | 80                                                                  | 23                                                         | 16 | 49              | 5  |
| Paul, St. ....        | 4             | ..           | 138                                                                 | 49                                                         | 5  | 28              | 11 |
| Thomas, St. ..        | 2             | ..           | 110                                                                 | 28                                                         | 11 | 569             | 17 |
| Total.....            | 59            | 1            | 2747                                                                | 592                                                        | 15 | 5               | 4  |

HALF-YEARLY REPORT for the first six months of 1850.

COUNTY OF BONAVENTURE.

| Municipalities.   | Schools.       |              | Number of Children attending the Schools from 5 to 16 years of age. | Six months' allowance of the sum allotted to Lower Canada. |    | Amounts granted. |    |
|-------------------|----------------|--------------|---------------------------------------------------------------------|------------------------------------------------------------|----|------------------|----|
|                   | Commissioners' | Dissentient. |                                                                     | £                                                          | s. | £                | s. |
| Carleton ..       | 3              | ..           | 109                                                                 | 22                                                         | 13 | 22               | 13 |
| Cox ..            | 3              | ..           | 80                                                                  | 21                                                         | 16 | 21               | 16 |
| Hamilton ..       | 3              | ..           | 109                                                                 | 21                                                         | 0  | 21               | 0  |
| Hope ..           | 2              | ..           | 62                                                                  | 21                                                         | 1  | 21               | 1  |
| Maria ..          | 2              | ..           | 56                                                                  | 21                                                         | 0  | 21               | 0  |
| Mann ..           | ..             | ..           | .....                                                               | 8                                                          | 4  | 8                | 4  |
| Matapédia... ..   | 1              | ..           | 24                                                                  | 6                                                          | 11 | 6                | 11 |
| New Richmond ..   | 3              | ..           | 68                                                                  | 14                                                         | 10 | 14               | 10 |
| (Dissentients)    | ..             | 1            | 36                                                                  | 7                                                          | 14 | 7                | 14 |
| Port Daniel... .. | 2              | ..           | 101                                                                 | 16                                                         | 9  | 16               | 9  |
| Shoolbred ..      | ..             | ..           | 15                                                                  | 6                                                          | 11 | 6                | 11 |
| Total.....        | 21             | 1            | 660                                                                 | 167                                                        | 14 | 159              | 10 |

HALF-YEARLY REPORT for the first six months of 1957.

COUNTY OF CHAMBLY.

| Municipalities. | Schools.       |              | Number of Children attending the Schools from 5 to 16 years of age. | Six months' allowance of the sum allotted to lower Canada. |    | Amount granted. |    |
|-----------------|----------------|--------------|---------------------------------------------------------------------|------------------------------------------------------------|----|-----------------|----|
|                 | Commissioners. | Dissentient. |                                                                     | £                                                          | s. | £               | s. |
| Blairfield ..   | 5              | 1            | 266                                                                 | 52                                                         | 4  | 52              | 4  |
| Boucherville .. | 5              | ..           | 297                                                                 | 58                                                         | 14 | 58              | 14 |
| Bruno, St. ..   | 2              | ..           | 129                                                                 | 15                                                         | 19 | 15              | 19 |
| Chambly ..      | 10             | ..           | 519                                                                 | 94                                                         | 16 | 94              | 16 |
| Jean, St. ..    | 6              | ..           | 389                                                                 | 72                                                         | 16 | 72              | 16 |
| L'ongueil ..    | 10             | 1            | 547                                                                 | 80                                                         | 1  | 80              | 1  |
| Luc, St. ..     | 2              | ..           | 92                                                                  | 25                                                         | 17 | 25              | 17 |
| Total .....     | 40             | 3            | 2239                                                                | 411                                                        | 3  | 411             | 3  |

HALF-YEARLY REPORT for the first six months of 1850.

COUNTY OF CHAMPLAIN.

| Municipalities.       | Schools.      |             | Number of Child-Schools from 5 to 16 years of age. | Six months allowance of the sum allotted to Lower Canada. |    | Amount granted. |    |
|-----------------------|---------------|-------------|----------------------------------------------------|-----------------------------------------------------------|----|-----------------|----|
|                       | Commissioner. | Missionist. |                                                    | £                                                         | s. | £               | s. |
| La Pêrade ...         | 10            | ..          | 324                                                | 52                                                        | 6  | 52              | 3  |
| Batiscan ...          | 2             | ..          | 191                                                | 18                                                        | 4  | 18              | 2  |
| Cap La Magdeleine ... | 3             | ..          | 120                                                | 21                                                        | 16 | 21              | 8  |
| Geneviève, Ste. ...   | 4             | ..          | 158                                                | 41                                                        | 2  | 41              | 2  |
| Maurice, St. ...      | ..            | ..          | .....                                              | 16                                                        | 9  | 16              | 7  |
| Proper, St....        | ..            | ..          | .....                                              | 41                                                        | 7  | 41              | 2  |
| Stanislas, St. ...    | 4             | ..          | 166                                                | 33                                                        | 7  | 33              | 4  |
| Champlain ...         | ..            | ..          | ..                                                 | ..                                                        | .. | ..              | .. |
| Total.....            | 23            | ..          | 959                                                | 224                                                       | 13 | 224             | 7  |

HALF-YEARLY REPORT for the first six months of 1850.

COUNTY OF TWO MOUNTAINS.

| Municipalities.           | Schools.       |              | Number of Children attending the Schools from 5 to 16 years of age. | Six months' allowance of the sum allotted to Lower Canada. |    |    | Amounts granted. |    |    |
|---------------------------|----------------|--------------|---------------------------------------------------------------------|------------------------------------------------------------|----|----|------------------|----|----|
|                           | Commissioners. | Dissentient. |                                                                     | £                                                          | s. | d. | £                | s. | d. |
| Argenteuil ...            | 17             | ..           | 599                                                                 | 92                                                         | 0  | 6  | 92               | 0  | 6  |
| Augustin, St. ...         | ..             | ..           | .....                                                               | 54                                                         | 14 | 1  | 54               | 14 | 1  |
| Benoît, St. ...           | 10             | 1            | 456                                                                 | 96                                                         | 19 | 5  | 96               | 19 | 5  |
| Chatham ...               | 12             | ..           | 328                                                                 | 50                                                         | 11 | 9  | 50               | 11 | 9  |
| Colomban, St. ...         | 4              | ..           | 136                                                                 | 24                                                         | 7  | 8  | 24               | 7  | 8  |
| Eustache, St. ...         | 6              | ..           | 308                                                                 | 63                                                         | 7  | 2  | 63               | 7  | 2  |
| Gore ...                  | 6              | ..           | 231                                                                 | 29                                                         | 19 | 9  | 29               | 19 | 9  |
| Grenville ...             | ..             | ..           | .....                                                               | 47                                                         | 9  | 1  | 47               | 9  | 1  |
| Hermas, St. ...           | 4              | ..           | 200                                                                 | 37                                                         | 17 | 11 | 37               | 17 | 11 |
| Marie, Ste., Côte ...     | ..             | ..           | .....                                                               | 8                                                          | 15 | 9½ | 8                | 15 | 9½ |
| Placide, Ste. ...         | 1              | ..           | 48                                                                  | 10                                                         | 13 | 0½ | 10               | 13 | 0½ |
| Nord de l'Île Bizarre ... | 11             | ..           | 394                                                                 | 98                                                         | 0  | 10 | 98               | 0  | 10 |
| Sud de " ...              | ..             | ..           | ..                                                                  | ..                                                         | .. | .. | ..               | .. | .. |
| Scholastique, Ste. ...    | ..             | ..           | ..                                                                  | ..                                                         | .. | .. | ..               | .. | .. |
| Total.....                | 71             | 1            | 2720                                                                | 614                                                        | 17 | 0  | 503              | 18 | 0½ |

HALF-YEARLY REPORT for the first six months of 1850.

COUNTY OF DORCHESTER.

| Municipalities.                 | Schools.      |              | Number of Children attending the Schools from 5 to 16 years of age. | Six months' allowance of the sum allotted to Lower Canada. |    |    | Amounts granted. |    |    |
|---------------------------------|---------------|--------------|---------------------------------------------------------------------|------------------------------------------------------------|----|----|------------------|----|----|
|                                 | Commissioners | Dissentient. |                                                                     | £                                                          | s. | d. | £                | s. | d. |
| Anselme, St. ....               | 8             | ..           | 221                                                                 | 52                                                         | 12 | 10 | 52               | 12 | 10 |
| Aubert Gallion .....            | 4             | ..           | 92                                                                  | 25                                                         | 2  | 6  | 25               | 2  | 6  |
| Bernard, St. ....               | ..            | ..           | .....                                                               | 13                                                         | 11 | 11 | ..               | .. | .. |
| Claire, Ste., de Joliette ..... | ..            | ..           | .....                                                               | 51                                                         | 14 | 10 | ..               | .. | .. |
| Cranbourne... ..                | ..            | ..           | .....                                                               | 6                                                          | 1  | 11 | ..               | .. | .. |
| Elzéar, St. ....                | ..            | ..           | .....                                                               | 41                                                         | 12 | 1  | ..               | .. | .. |
| Frampton .....                  | 7             | ..           | 282                                                                 | 48                                                         | 5  | 7  | 48               | 5  | 7  |
| François, St. ....              | 9             | ..           | 327                                                                 | 51                                                         | 19 | 9  | 51               | 19 | 9  |
| Henri, St., de Lauzon .....     | 10            | ..           | 417                                                                 | 63                                                         | 12 | 0  | 63               | 12 | 0  |
| Isidore, St., de Lauzon .....   | ..            | ..           | .....                                                               | 45                                                         | 1  | 4  | ..               | .. | .. |
| Jean, St., Chrysostôme .....    | 8             | ..           | 264                                                                 | 47                                                         | 5  | 10 | 47               | 5  | 10 |
| Joseph, St., de Beauce .....    | ..            | ..           | .....                                                               | 28                                                         | 1  | 10 | ..               | .. | .. |
| “ Premier Rang .....            | 3             | ..           | 78                                                                  | 14                                                         | 5  | 1  | 14               | 5  | 1  |
| Marie, Ste., de Beauce .....    | ..            | ..           | .....                                                               | 54                                                         | 9  | 1½ | ..               | .. | .. |
| Carried forward.....            | 49            | ..           | 1631                                                                | 533                                                        | 16 | 5½ | 303              | 3  | 7  |



HALF-YEARLY REPORT for the first six months of 1850.

COUNTY OF LORCHESTER—Continued.

| Municipalities.              | School's.     |             | Number of (Child-<br>ren attending the<br>Schools from 5 to<br>16 years of age. | Six months' allowance<br>of the sum allotted<br>to Lower Canada. |           |          | Amounts granted. |          |          |
|------------------------------|---------------|-------------|---------------------------------------------------------------------------------|------------------------------------------------------------------|-----------|----------|------------------|----------|----------|
|                              | Commissioner. | Dissentient |                                                                                 | £                                                                | s.        | d.       | £                | s.       | d.       |
| Brought forward.....         | 49            | ...         | 1631                                                                            | 533                                                              | 16        | 5        | 303              | 3        | 7        |
| Marie, Sec. (Village of) ... | 1             | ...         | 40                                                                              | 12                                                               | 2         | 3        | 12               | 2        | 3        |
| Metschemet ...               | ...           | ...         | .....                                                                           | 12                                                               | 7         | 2        |                  |          |          |
| Nicolas, St. ...             | 10            | ...         | 341                                                                             | 58                                                               | 9         | 10       | 58               | 9        | 10       |
| Pointe Lévi... ..            | 14            | ...         | 546                                                                             | 88                                                               | 10        | 11       | 88               | 10       | 11       |
| Ville d'Aubigny ...          | ...           | ...         | ...                                                                             | ...                                                              | ...       | ...      | ...              | ...      | ...      |
| " (Dissentients)             | ...           | 1           | 23                                                                              | 3                                                                | 14        | 7        | 3                | 14       | 7        |
| Frédéric, St. ...            | 5             | ...         | 167                                                                             | 24                                                               | 19        | 3        | 24               | 19       | 3        |
| Marguerite, Ste. ...         | ...           | ...         | .....                                                                           | 51                                                               | 13        | 2        |                  |          |          |
| <b>Total.....</b>            | <b>79</b>     | <b>1</b>    | <b>2748</b>                                                                     | <b>795</b>                                                       | <b>13</b> | <b>9</b> | <b>491</b>       | <b>0</b> | <b>5</b> |

HALF-YEARLY REPORT for the first six months of 1850.

COUNTY OF DRUMMOND.

| Municipalities. | Schools.       |              | Number of Children attending the Schools from 5 to 16 years of age. | Six months' allowance of the sum allotted to Lower Canada. |          | Amounts granted. |
|-----------------|----------------|--------------|---------------------------------------------------------------------|------------------------------------------------------------|----------|------------------|
|                 | Commissioners. | Dissentient. |                                                                     | £ s. d.                                                    | £ s. d.  |                  |
| Aston ..        | ..             | ..           | .....                                                               | £ 5 17 0                                                   | £ 42 0 4 |                  |
| Arthabaska ..   | ..             | ..           | .....                                                               | 25 15 9                                                    | 47 10 9  |                  |
| Dunham ..       | 10             | ..           | 239                                                                 | 42 0 4                                                     | 23 19 6  |                  |
| Grantham ..     | 10             | ..           | ..                                                                  | 23 9 7                                                     |          |                  |
| Kingsey ..      | 3              | ..           | 274                                                                 | 47 10 9                                                    |          |                  |
| Sarnfield ..    | ..             | ..           | 124                                                                 | 23 19 6                                                    |          |                  |
| Tingwick ..     | ..             | ..           | .....                                                               | 15 14 6                                                    |          |                  |
| Upton ..        | ..             | ..           | .....                                                               | 25 12 5                                                    |          |                  |
| Wickham ..      | ..             | ..           | .....                                                               | 7 14 10                                                    |          |                  |
| Total.....      | 23             | ..           | 627                                                                 | 2 8 14 8                                                   | 113 10 7 |                  |

HALF-YEARLY REPORT for the first six months of 1850.

COUNTY OF GASPE.

| Municipalities.       | Schools.       |              | Number of Children attending the Schools from 5 to 16 years of age. | Six months' allowance of the sum allotted to Lower Canada. |    |    | Amount granted. |    |    |
|-----------------------|----------------|--------------|---------------------------------------------------------------------|------------------------------------------------------------|----|----|-----------------|----|----|
|                       | Commissioners' | Dissentient. |                                                                     | £                                                          | s. | d. | £               | s. | d. |
| Cap Chat ...          | ..             | ..           | .....                                                               | 14                                                         | 14 | 11 | 12              | 7  | 2  |
| Cap Rosier ..         | ..             | ..           | 40                                                                  | 12                                                         | 7  | 2  | 13              | 3  | 8  |
| Douglas ...           | ..             | ..           | 82                                                                  | 13                                                         | 3  | 8  | 16              | 9  | 7  |
| Fox et Griffin's Cove | ..             | ..           | .....                                                               | 19                                                         | 15 | 5  | 12              | 7  | 2  |
| Grand River ..        | ..             | ..           | .....                                                               | 16                                                         | 9  | 7  | 14              | 16 | 7  |
| Bay North ...         | ..             | ..           | 47                                                                  | 44                                                         | 3  | 2  | 8               | 4  | 9  |
| Bay South ...         | ..             | ..           | 28                                                                  | 14                                                         | 16 | 7  | 21              | 8  | 5  |
| Magdalen Islands ...  | ..             | ..           | .....                                                               | 177                                                        | 10 | 10 | 69              | 4  | 2  |
| Malbaie ...           | ..             | ..           | 36                                                                  |                                                            |    |    |                 |    |    |
| Newport ...           | ..             | ..           | .....                                                               |                                                            |    |    |                 |    |    |
| Percé ...             | ..             | ..           | .....                                                               |                                                            |    |    |                 |    |    |
| Total.....            | 9              | ..           | 233                                                                 |                                                            |    |    |                 |    |    |

Municipalities.

Total.....

HALF-YEARLY REPORT for the first six months of 1850.  
 COUNTY OF HUNTINGDON.

| Municipalities.         | Schools.       |              | Number of Children attending the Schools from 5 to 16 years of age. | Six months' allowance of the sum allotted to Lower Canada. |    |                  | Amount granted. |    |                  |
|-------------------------|----------------|--------------|---------------------------------------------------------------------|------------------------------------------------------------|----|------------------|-----------------|----|------------------|
|                         | Commissioners. | Dissentient. |                                                                     | f.                                                         | s. | d.               | f.              | s. | d.               |
| Chateaugay              | 5              | ..           | 230                                                                 | 45                                                         | 11 | 3                | 45              | 11 | 3                |
| Constant, St.           | 6              | ..           | 341                                                                 | 61                                                         | 2  | 8                | 61              | 2  | 8                |
| Cyprien, St.            | 9              | ..           | 430                                                                 | 93                                                         | 6  | 10 $\frac{1}{2}$ | 93              | 6  | 10 $\frac{1}{2}$ |
| Edouard, St.            | 9              | ..           | 400                                                                 | 62                                                         | 11 | 11 $\frac{1}{2}$ | 62              | 11 | 11 $\frac{1}{2}$ |
| Isidore, St.            | 4              | ..           | 267                                                                 | 49                                                         | 2  | 0                | 49              | 2  | 0                |
| Jacques, St., le Mineur | 4              | ..           | 214                                                                 | 41                                                         | 17 | 1                | 41              | 17 | 1                |
| Lacolle                 | 17             | ..           | 621                                                                 | 74                                                         | 19 | 5                | 74              | 19 | 5                |
| Laprairie               | 9              | ..           | 528                                                                 | 97                                                         | 1  | 0                | 97              | 1  | 0                |
| Michel, St. ...         | 5              | ..           | 303                                                                 | 46                                                         | 5  | 3                | 46              | 5  | 3                |
| Philippe, St.           | 7              | ..           | 264                                                                 | 62                                                         | 5  | 8                | 62              | 5  | 8                |
| Philomène, Ste.         | 5              | ..           | 272                                                                 | 42                                                         | 18 | 6                | 42              | 18 | 6                |
| Rémi, St. ...           | 5              | ..           | 289                                                                 | 54                                                         | 11 | 11 $\frac{1}{2}$ | 54              | 11 | 11 $\frac{1}{2}$ |
| " (Dissentients)        | ..             | 1            | 34                                                                  | 6                                                          | 8  | 5 $\frac{1}{2}$  | 6               | 8  | 5 $\frac{1}{2}$  |
| Valentin, St.           | 7              | ..           | 398                                                                 | 58                                                         | 1  | 8                | 58              | 1  | 8                |
| Total.....              | 92             | 1            | 4591                                                                | 796                                                        | 3  | 8                | 796             | 3  | 8                |

HALF-YEARLY REPORT for the first six months of 1850.

COUNTY OF KAMOURASKA.

| Municipalities.  | Schools.      |             | Number of Children attending the Schools from 5 to 16 years of age. | Six months allowance of the sum allotted to Lower Canada. |    | Amounts granted. |    |
|------------------|---------------|-------------|---------------------------------------------------------------------|-----------------------------------------------------------|----|------------------|----|
|                  | Commissioners | Dissenting. |                                                                     | £                                                         | s. | £                | s. |
| André, St. ...   | 9             | ..          | 273                                                                 | 69                                                        | 18 | 69               | 18 |
| Arin, Ste. ...   | ..            | ..          | ....                                                                | 64                                                        | 8  | 64               | 8  |
| Denis, St. ...   | 5             | ..          | 140                                                                 | 35                                                        | 3  | 35               | 3  |
| Kamouraska       | 7             | ..          | 500                                                                 | 56                                                        | 10 | 56               | 10 |
| Paschal, St. ..  | 9             | ..          | 335                                                                 | 67                                                        | 13 | 67               | 13 |
| Rivière Ouelle   | 2             | ..          | 71                                                                  | 78                                                        | 18 | 78               | 18 |
| Héliène, Ste. .. | ..            | ..          | ....                                                                | 20                                                        | 7  | 20               | 7  |
| Total.....       | 32            | ..          | 1022                                                                | 393                                                       | 3  | 393              | 7  |
|                  |               |             |                                                                     |                                                           |    | 308              | 7  |
|                  |               |             |                                                                     |                                                           |    |                  | 6  |

HALF-YEARLY REPORT for the first six months of 1950.

COUNTY OF LISLET.

| Municipalities.                | Schools.       |             | Number of Children attending the Schools from 5 to 16 years of age. | Six months' allowance of the sum allotted to Lower Canada. |    |    | Amounts granted. |    |    |
|--------------------------------|----------------|-------------|---------------------------------------------------------------------|------------------------------------------------------------|----|----|------------------|----|----|
|                                | Commissioners. | Dissenting. |                                                                     | £                                                          | s. | d. | £                | s. | d. |
| Cap St. Ignace ..              | ..             | ..          | .....                                                               | 51                                                         | 9  | 10 |                  |    |    |
| Cyrille, St. ...               | ..             | ..          | .....                                                               | 17                                                         | 6  | 0  |                  |    |    |
| Isle aux Grues ..              | ..             | ..          | 113                                                                 | 11                                                         | 13 | 11 | 11               | 13 | 11 |
| L'Islet ..                     | ..             | ..          | .....                                                               | 52                                                         | 12 | 11 |                  |    |    |
| Pierrt, St., Rivière du Sud .. | ..             | ..          | .....                                                               | 26                                                         | 10 | 7  |                  |    |    |
| Port Joli ...                  | ..             | ..          | .....                                                               | 70                                                         | 17 | 1  |                  |    |    |
| Roch, St., des Aulhets ..      | ..             | ..          | .....                                                               | 64                                                         | 13 | 6  |                  |    |    |
| Thomas, St. ...                | ..             | ..          | 524                                                                 | 80                                                         | 3  | 3  | 80               | 3  | 3  |
| Total.....                     | 11             | ..          | 637                                                                 | 375                                                        | 7  | 1  | 91               | 17 | 2  |

HALF-YEARLY REPORT for the first six months of 1850.

COUNTY OF LEINSTER.

| Municipalities.                  | Schools.        |              | Number of Children attending the Schools from 5 to 16 years of age. | Six months' allowance of the sum allotted to Lower Canada. |       | Amount granted. |       |    |    |
|----------------------------------|-----------------|--------------|---------------------------------------------------------------------|------------------------------------------------------------|-------|-----------------|-------|----|----|
|                                  | Commissioners'. | Dissentient. |                                                                     | £                                                          | s. d. | £               | s. d. |    |    |
| Esprit, St. ...                  | 7               | ...          | 236                                                                 | 41                                                         | 8     | 10              | 41    | 8  | 10 |
| Jacques, St. ...                 | 14              | ...          | 815                                                                 | 128                                                        | 10    | 5               | 128   | 10 | 5  |
| Chenaie, La ...                  | 3               | ...          | 131                                                                 | 16                                                         | 16    | 2               | 16    | 16 | 2  |
| L'Assomption, Parish and Village | 13              | ...          | 404                                                                 | 79                                                         | 16    | 8               | 79    | 16 | 8  |
| Lin, St. ...                     | 4               | ...          | 148                                                                 | 62                                                         | 17    | 2½              | 62    | 17 | 2½ |
| Mascouche ...                    | 7               | ...          | 286                                                                 | 50                                                         | 8     | 5               | 50    | 8  | 5  |
| Rawdon ...                       | 8               | ...          | 320                                                                 | 39                                                         | 14    | 2               | 39    | 14 | 2  |
| Julienne, Ste. ...               | 4               | ...          | 101                                                                 | 23                                                         | 4     | 8               | 23    | 4  | 8  |
| Repentigny ...                   | 4               | ...          | 218                                                                 | 38                                                         | 4     | 6               | 38    | 4  | 6  |
| Roch, St. ...                    | 5               | ...          | 277                                                                 | 51                                                         | 14    | 9               | 51    | 14 | 9  |
| Sulpice, St. ...                 | 3               | ...          | 126                                                                 | 20                                                         | 8     | 8               | 20    | 8  | 8  |
| Total,.....                      | 72              | ...          | 3062                                                                | 553                                                        | 4     | 5½              | 553   | 4  | 5½ |

HALF-YEARLY REPORT for the first six months of 1850.

COUNTY OF LOTBINIÈRE.

| Municipalities.        | Schools.      |              | Number of Children attending the Schools from 5 to 16 years of age. | Six months' allowance of the sum allotted to Lower Canada. |    |    | Amounts granted. |    |    |
|------------------------|---------------|--------------|---------------------------------------------------------------------|------------------------------------------------------------|----|----|------------------|----|----|
|                        | Commissioners | Dissentient. |                                                                     | £                                                          | s. | d. | £                | s. | d. |
| Antoine, St., de Tilly | ..            | ..           | 222                                                                 | 66                                                         | 13 | 0  | 66               | 13 | 0  |
| Croix, Ste. ..         | ..            | ..           | 192                                                                 | 47                                                         | 0  | 10 | 47               | 0  | 10 |
| Deschailons            | 3             | ..           | 99                                                                  | 27                                                         | 15 | 3  | 27               | 15 | 3  |
| Flavien, St. ...       | ..            | ..           | .....                                                               | 8                                                          | 1  | 5  |                  |    |    |
| Giles, St. ...         | ..            | ..           | .....                                                               | 27                                                         | 8  | 9  |                  |    |    |
| Lotbinière ..          | 14            | ..           | 509                                                                 | 67                                                         | 6  | 2  | 67               | 6  | 2  |
| Sylvestre, St.         | 13            | ..           | 414                                                                 | 85                                                         | 13 | 8  | 85               | 13 | 8  |
| Total.....             | 46            | ..           | 1436                                                                | 329                                                        | 19 | 1  | 294              | 8  | 11 |



HALF-YEARLY REPORT for the first six months of 1850

COUNTY OF MEGANTIC.

| Municipalities.  | Schools.       |              | Number of Children attending the Schools from 5 to 16 years of age. | Six months' allowance of the sum allotted to Lower Canada. |          | Amounts granted. |
|------------------|----------------|--------------|---------------------------------------------------------------------|------------------------------------------------------------|----------|------------------|
|                  | Commissioners. | Dissentient. |                                                                     | £ s. d.                                                    | £ s. d.  |                  |
| Broughton        | 1              | ..           | 37                                                                  | 5 12 1                                                     | 8 11 5   |                  |
| Forsyth          | ..             | ..           | ..                                                                  | 7 16 6                                                     | ..       |                  |
| Halifax          | 8              | ..           | 170                                                                 | 23 9 7                                                     | 23 9 7   |                  |
| Inverness        | ..             | ..           | ..                                                                  | 38 9 6                                                     | ..       |                  |
| Ireland          | ..             | ..           | ..                                                                  | 19 12 2                                                    | ..       |                  |
| Lambton          | ..             | ..           | ..                                                                  | 15 11 5                                                    | ..       |                  |
| Leeds            | ..             | ..           | ..                                                                  | 30 12 0                                                    | ..       |                  |
| " (Dissentients) | ..             | 1            | 28                                                                  | 4 1 8                                                      | 4 1 8    |                  |
| Somerset         | 5              | ..           | 170                                                                 | 23 17 10                                                   | 23 17 10 |                  |
| Tring            | 2              | ..           | 81                                                                  | 11 18 11                                                   | 11 18 11 |                  |
| Total.....       | 16             | 1            | 486                                                                 | 181 1 8                                                    | 71 19 5  |                  |

HALF-YEARLY REPORT for the first six months of 1850.

COUNTY OF MISSISQUOI.

| Municipalities. | Schools.      |              | Number of Children attending the Schools from 5 to 16 years of age. | Six months' allowance of the sum allotted to Lower Canada. |    | Amounts granted. |    |
|-----------------|---------------|--------------|---------------------------------------------------------------------|------------------------------------------------------------|----|------------------|----|
|                 | Commissioners | Dissentient. |                                                                     | £                                                          | s  | £                | s  |
| Dunham ..       | 21            | ..           | 471                                                                 | 63                                                         | 10 | 63               | 10 |
| Frelighsburg .. | 9             | ..           | 430                                                                 | 31                                                         | 11 | 31               | 11 |
| Philips-burg .. | 11            | ..           | 329                                                                 | 34                                                         | 17 | 34               | 17 |
| Stanbridge ..   | 19            | ..           | 635                                                                 | 66                                                         | 8  | 66               | 8  |
| Sutton ..       | 12            | ..           | 443                                                                 | 37                                                         | 6  | 37               | 6  |
| Total.....      | 72            | ..           | 2308                                                                | 233                                                        | 13 | 233              | 13 |

HALF-YEARLY REPORT for the first six months of 1850.

COUNTY OF MONTMORENCY.

| Municipalities.   | Schools.       |              | Number of Children attending the Schools from 5 to 16 years of age. | Six months' allowance of the sum allotted to Lower Canada. |    | Amount granted. |    |
|-------------------|----------------|--------------|---------------------------------------------------------------------|------------------------------------------------------------|----|-----------------|----|
|                   | Commissioners' | Dissentient. |                                                                     | £                                                          | s. | £               | s. |
| Côte Beauré       | 2              | ..           | 69                                                                  | 13                                                         | 6  | 11              | d. |
| Château Richer    | 4              | ..           | 124                                                                 | 24                                                         | 6  | 1               | s. |
| Famille, Ste.     | 1              | ..           | 100                                                                 | 17                                                         | 12 | 7               | 7  |
| Féréol, St. ...   | ..             | ..           | .....                                                               | 14                                                         | 3  | 5               | .. |
| François, St. ... | 2              | ..           | 64                                                                  | 10                                                         | 10 | 11              | 11 |
| Jean, St. ...     | 3              | ..           | 181                                                                 | 26                                                         | 10 | 7               | 7  |
| Joachim, St. ...  | 1              | ..           | 40                                                                  | 14                                                         | 6  | 9               | 9  |
| Laurent, St. ...  | 3              | ..           | 234                                                                 | 12                                                         | 7  | 2               | 2  |
| L'Ange Gardien,   | 3              | ..           | 106                                                                 | 14                                                         | 14 | 11              | 11 |
| Pierre, St. ...   | 3              | ..           | 134                                                                 | 16                                                         | 4  | 7               | 7  |
| Total,.....       | 22             | ..           | 1043                                                                | 164                                                        | 3  | 11              | 6  |

HALF-YEARLY REPORT for the first six months of 1850.

COUNTY OF MONTREAL.

| Municipalities.            | Schools.       |              | Number of Children attending the Schools from 5 to 16 years of age. | Six months' allowance of the sum allotted to Lower Canada. |    |    | Amount grant. d. |    |    |
|----------------------------|----------------|--------------|---------------------------------------------------------------------|------------------------------------------------------------|----|----|------------------|----|----|
|                            | Commissioners. | Dissentient. |                                                                     | £                                                          | s. | d. | £                | s. | d. |
| Anne, Ste., Bout de l'Isle | 2              | ..           | 82                                                                  | 18                                                         | 0  | 10 | 18               | 0  | 10 |
| Cité (Catholics) ..        | 10             | ..           | 494                                                                 | 133                                                        | 8  | 2  | 133              | 8  | 2  |
| " (Protestants) ..         | 6              | ..           | 274                                                                 | 69                                                         | 15 | 1  | 69               | 15 | 1  |
| Côte des Neiges ..         | 2              | ..           | 92                                                                  | 27                                                         | 10 | 8  | 27               | 10 | 8  |
| Côte Visitation ..         | 1              | ..           | 34                                                                  | 4                                                          | 16 | 6  | 4                | 16 | 6  |
| " (Dissentients)           | ..             | 1            | 27                                                                  | 2                                                          | 7  | 0  | 2                | 7  | 0  |
| Côteau St. Louis ..        | 3              | ..           | 188                                                                 | 15                                                         | 13 | 6  | 15               | 13 | 6  |
| Geneviève, Ste. ..         | 4              | ..           | 179                                                                 | 39                                                         | 2  | 8  | 39               | 2  | 8  |
| Henri, St. ..              | 2              | ..           | 111                                                                 | 14                                                         | 17 | 1  | 14               | 17 | 1  |
| Hochelega ..               | 2              | ..           | 77                                                                  | 15                                                         | 1  | 11 | 15               | 1  | 11 |
| Lachine ..                 | 3              | 1            | 181                                                                 | 48                                                         | 7  | 2  | 48               | 7  | 2  |
| Laurent, St... ..          | 8              | 1            | 337                                                                 | 60                                                         | 11 | 1  | 60               | 11 | 1  |
| Longue Pointe ..           | 3              | ..           | 97                                                                  | 18                                                         | 19 | 0  | 18               | 19 | 0  |
| Carried forward.....       | 46             | 3            | 2173                                                                | 468                                                        | 10 | 8  | 468              | 10 | 8  |

HALF-YEARLY REPORT for the first six months of 1850.

COUNTY OF MONTREAL—Continuation.

| Municipalities.          | Schools.       |              | Number of Children attending the Schools from 5 to 16 years of age. | Six months' allowance of the sum allotted to Lower Canada. |         | Amount granted. |         |    |    |
|--------------------------|----------------|--------------|---------------------------------------------------------------------|------------------------------------------------------------|---------|-----------------|---------|----|----|
|                          | Commissioners. | Dissentient. |                                                                     | £ s. d.                                                    | £ s. d. | £ s. d.         | £ s. d. |    |    |
| Pierre, St. ...          | 46             | 3            | 2173                                                                | 468                                                        | 10      | 8               | 468     | 10 | 8  |
| Pointe aux Trembles ...  | 2              | ..           | 103                                                                 | 20                                                         | 6       | 11              | 20      | 6  | 11 |
| Pointe Claire ...        | 2              | ..           | 83                                                                  | 21                                                         | 18      | 3               | 21      | 18 | 3  |
| Rivière des Prairies ... | 5              | ..           | 175                                                                 | 33                                                         | 9       | 0               | 33      | 9  | 0  |
| Sault au Récollet ...    | 3              | ..           | 129                                                                 | 17                                                         | 15      | 11              | 17      | 15 | 11 |
| ... ..                   | 4              | ..           | 228                                                                 | 42                                                         | 6       | 11              | 42      | 6  | 11 |
| Brought forward.....     | 62             | 3            | 2891                                                                | 694                                                        | 7       | 8               | 694     | 7  | 8  |
| Total.....               | 62             | 3            | 2891                                                                | 694                                                        | 7       | 8               | 694     | 7  | 8  |

HALF-YEARLY REPORT for the first six months of 1850.

COUNTY OF NICOLET.

| Municipalities.           | Schools.       |              | Number of Children attending the Schools from 5 to 16 years of age. | Six months' allowance of the sum allotted to Lower Canada. |    | Amount granted. |    |
|---------------------------|----------------|--------------|---------------------------------------------------------------------|------------------------------------------------------------|----|-----------------|----|
|                           | Commissioners. | Dissentient. |                                                                     | £                                                          | s. | £               | s. |
| Bécancour                 | 13             | ..           | 640                                                                 | 75                                                         | 19 | 2               | 2  |
| Blandford                 | 2              | ..           | 36                                                                  | 8                                                          | 3  | 2               | 2  |
| Gentilly                  | 8              | ..           | 424                                                                 | 57                                                         | 10 | 1               | 1  |
| Grégoire, St...           | 12             | ..           | 693                                                                 | 78                                                         | 8  | 7½              | 7½ |
| Monique, Ste.             | ..             | ..           | .....                                                               | 44                                                         | 8  | 2               | 2  |
| Nicolet                   | 10             | ..           | 367                                                                 | 53                                                         | 11 | 0½              | 0½ |
| Pierre, St., les Becquets | 9              | ..           | 292                                                                 | 51                                                         | 8  | 2               | 2  |
| Total.....                | 54             | ..           | 2452                                                                | 369                                                        | 8  | 5               | 3  |

HALF-YEARLY REPORT for the first six months of 1850.

COUNTY OF OTTAWA.

| Municipalities.     | Schools.      |              | Number of Children attending the Schools from 5 to 16 years of age. | Six months' allowance of the sum allotted to Lower Canada. |    | Amount granted. |          |
|---------------------|---------------|--------------|---------------------------------------------------------------------|------------------------------------------------------------|----|-----------------|----------|
|                     | Commissioners | Dissentient. |                                                                     | £                                                          | s. | £               | s.       |
| Allumettes ..       | 1             | ..           | 24                                                                  | 8                                                          | 1  | 0               | d.       |
| Bristol ..          | 3             | ..           | 94                                                                  | 12                                                         | 5  | 6               | 6        |
| Buckingham ..       | ..            | ..           | ..                                                                  | 24                                                         | 2  | 5               | ..       |
| " (Dissentients)    | ..            | 1            | 12                                                                  | 1                                                          | 16 | 8               | 8        |
| Clarendon ..        | ..            | ..           | ..                                                                  | 29                                                         | 5  | 0               | ..       |
| Calumet ..          | 1             | ..           | 20                                                                  | 13                                                         | 8  | 4               | 4        |
| Fardley ..          | ..            | ..           | ..                                                                  | 6                                                          | 5  | 2               | ..       |
| Hall, ..            | 11            | ..           | 335                                                                 | 68                                                         | 17 | 6               | 6        |
| Litchfield ..       | 3             | ..           | 92                                                                  | 8                                                          | 15 | 4               | 4        |
| Lochaber ..         | 6             | ..           | 157                                                                 | 16                                                         | 1  | 3               | 3        |
| Onslow ..           | ..            | ..           | ..                                                                  | 7                                                          | 10 | 0               | ..       |
| Petite Nation ..    | ..            | ..           | ..                                                                  | 42                                                         | 18 | 6               | ..       |
| Templeton ..        | 3             | ..           | 91                                                                  | 19                                                         | 8  | 10              | 10       |
| Aylmer Village ..   | ..            | ..           | ..                                                                  | ..                                                         | .. | ..              | ..       |
| Waterloo Village .. | ..            | ..           | ..                                                                  | ..                                                         | .. | ..              | ..       |
| Wakefield ..        | 1             | ..           | 24                                                                  | 11                                                         | 18 | 11              | 11       |
| Total.....          | 29            | 1            | 849                                                                 | 270                                                        | 14 | 5               | 160 13 4 |

Total..... 29 1 849 270 14 5 160 13 4

HALF-YEARLY REPORT for the first six months of 1850.

COUNTY OF PORTNEUF.

| Municipalities.        | Schools.      |             | Number of Children attending the Schools from 5 to 16 years of age. | Six months' allowance of the sum allotted to Lower Canada. |    |    | Amount granted. |    |    |
|------------------------|---------------|-------------|---------------------------------------------------------------------|------------------------------------------------------------|----|----|-----------------|----|----|
|                        | Commissioners | Disseident. |                                                                     | £                                                          | s. | d. | £               | s. | d. |
| Ancienne Lorette ..    | 6             | ..          | 313                                                                 | 41                                                         | 3  | 10 | 41              | 3  | 10 |
| Augustin, St. ..       | 4             | ..          | 172                                                                 | 28                                                         | 8  | 5  | 28              | 8  | 5  |
| Basile, St. ..         | ..            | ..          | .....                                                               | 16                                                         | 9  | 6  | ..              | .. | .. |
| Cap Santé ..           | 8             | ..          | 287                                                                 | 66                                                         | 3  | 2  | 66              | 3  | 2  |
| Cap Rouge ..           | 4             | ..          | 100                                                                 | 16                                                         | 9  | 6  | 16              | 9  | 6  |
| Casimir, St. ....      | ..            | ..          | .....                                                               | 43                                                         | 0  | 2  | ..              | .. | .. |
| Catherine, Ste. ..     | 6             | ..          | 272                                                                 | 42                                                         | 6  | 11 | 42              | 6  | 11 |
| Deschambault ..        | 1             | ..          | 68                                                                  | 10                                                         | 12 | 6  | 10              | 12 | 6  |
| Écureuils ..           | 5             | ..          | 153                                                                 | 26                                                         | 7  | 4  | 26              | 7  | 4  |
| Gronclines ..          | 4             | ..          | 221                                                                 | 37                                                         | 8  | 1  | 37              | 8  | 1  |
| Pointe-aux-Trembles .. | 3             | ..          | 118                                                                 | 23                                                         | 16 | 3  | 23              | 16 | 3  |
| Raymond, St. ..        | ..            | ..          | ..                                                                  | ..                                                         | .. | .. | ..              | .. | .. |
| Total.....             | 41            | ..          | 1704                                                                | 352                                                        | 5  | 8  | 292             | 16 | 0  |



HALF-YEARLY REPORT for the first six months of 1850.

COUNTY OF QUEBEC.

| Municipalities.      | Schools.       |              | Number of Children attending the Schools from 5 to 16 years of age. | Six months' allowance of the sum allotted to Lower Canada. |       | Amounts granted. |       |
|----------------------|----------------|--------------|---------------------------------------------------------------------|------------------------------------------------------------|-------|------------------|-------|
|                      | Commissioners. | Dissentient. |                                                                     | £                                                          | s. d. | £                | s. d. |
| Ambroise, St. ...    | 8              | ..           | 308                                                                 | 49                                                         | 7 0   | 49               | 7 0   |
| Beaumont ...         | 6              | ..           | 311                                                                 | 47                                                         | 0 10  | 47               | 0 10  |
| City (Catholics) ... | 15             | ..           | 1767                                                                | 288                                                        | 3 2   | 288              | 3 2   |
| " (Protestants) ...  | 4              | ..           | 185                                                                 | 95                                                         | 8 8   | 95               | 8 8   |
| Charlesbourg ...     | 5              | ..           | 258                                                                 | 36                                                         | 19 10 | 36               | 19 10 |
| Dunstan, St. ...     | ..             | ..           | ..                                                                  | 8                                                          | 18 2  | ..               | ..    |
| Foye, Ste. ...       | 2              | ..           | 91                                                                  | 29                                                         | 13 3  | 29               | 13 3  |
| Roch, St. ...        | ..             | ..           | ..                                                                  | 23                                                         | 17 11 | ..               | ..    |
| Stadacona ...        | ..             | ..           | ..                                                                  | 30                                                         | 17 11 | ..               | ..    |
| Stonham ...          | 1              | ..           | 46                                                                  | 8                                                          | 19 8  | 8                | 15 10 |
| Valcartier ...       | ..             | ..           | ..                                                                  | 30                                                         | 19 8  | ..               | ..    |
| Total.....           | 41             | ..           | 2966                                                                | 650                                                        | 6 1   | 550              | 8 7   |

HALF-YEARLY REPORT for the first six months of 1850.

COUNTY OF RICHELIEU.

| Municipalities.       | Schools.       |              | Number of Children attending the Schools from 5 to 16 years of age. | Six months' allowance of the sum allotted to Lower Canada. |    | Amounts granted. |    |
|-----------------------|----------------|--------------|---------------------------------------------------------------------|------------------------------------------------------------|----|------------------|----|
|                       | Commissioners. | Dissentient. |                                                                     | £                                                          | s. | £                | s. |
| Aimé, St. ...         | 7              | ..           | 330                                                                 | 73                                                         | 16 | 5                | 0  |
| Barnabé, St... ..     | 3              | ..           | 141                                                                 | 31                                                         | 16 | 0                | 0  |
| Sorel (Parish of) ..  | 10             | ..           | 274                                                                 | 57                                                         | 15 | 9                | 1  |
| Charles, St. ....     | 4              | ..           | 148                                                                 | 33                                                         | 4  | 1                | 1  |
| Denis, St. ....       | 9              | ..           | 441                                                                 | 63                                                         | 7  | 1                | 1  |
| Judé, St. ....        | 5              | ..           | 120                                                                 | 31                                                         | 6  | 2                | 2  |
| Ours, St. ....        | 6              | ..           | 392                                                                 | 67                                                         | 7  | 10               | 10 |
| Sorel (Village of) .. | 3              | ..           | 547                                                                 | 47                                                         | 19 | 10               | 10 |
| " (Dissentients)      | ..             | 1            | 90                                                                  | 11                                                         | 17 | 4                | 4  |
| Victoire, Ste. ...    | 3              | ..           | 123                                                                 | 52                                                         | 14 | 6                | 6  |
| Total.....            | 50             | 1            | 2519                                                                | 471                                                        | 5  | 0                | 0½ |

HALF-YEARLY REPORT for the first six months of 1850.

COUNTY OF RIMOUSKI.

| Municipalities.     | Schools.       |              | Number of Children attending the schools from 5 to 16 years of age. | Six months' allowance of the sum allotted to Lower Canada. |     |     | Amounts granted. |     |     |
|---------------------|----------------|--------------|---------------------------------------------------------------------|------------------------------------------------------------|-----|-----|------------------|-----|-----|
|                     | Commissioners' | Dissentient. |                                                                     | £                                                          | s.  | d.  | £                | s.  | d.  |
| Ric ...             | 3              | ...          | 85                                                                  | 17                                                         | 6   | 0   | 17               | 6   | 0   |
| Isle Verte ...      | 7              | ...          | 225                                                                 | 43                                                         | 3   | 5   | 43               | 3   | 5   |
| Kakouna—St. Arsène  | 5              | ...          | 293                                                                 | 48                                                         | 6   | 4½  | 48               | 6   | 4½  |
| " St. George        | 3              | ...          | 150                                                                 | 33                                                         | 11  | 5½  | 33               | 11  | 5½  |
| Lessard             | 4              | ...          | 104                                                                 | 27                                                         | 12  | 0   | 27               | 12  | 0   |
| Lepage              | ...            | ...          | .....                                                               | 21                                                         | 3   | 6   |                  |     |     |
| Matane              | ...            | ...          | .....                                                               | 11                                                         | 17  | 3   |                  |     |     |
| Métis               | 3              | ...          | 66                                                                  | 8                                                          | 6   | 5   | 8                | 6   | 5   |
| Rimouski            | 9              | ...          | 283                                                                 | 65                                                         | 11  | 7   | 65               | 11  | 7   |
| Rivière du Loup     | 6              | ...          | 204                                                                 | 69                                                         | 7   | 4   | 69               | 7   | 4   |
| Eloi, St.           | ...            | ...          | .....                                                               | 26                                                         | 0   | 8   |                  |     |     |
| Simon, St.          | 5              | ...          | 162                                                                 | 34                                                         | 15  | 4   | 34               | 15  | 4   |
| Trois Pistoles      | 8              | ...          | 279                                                                 | 54                                                         | 5   | 10  | 54               | 5   | 10  |
| Village St. Edouard | ...            | ...          | ...                                                                 | ...                                                        | ... | ... | ...              | ... | ... |
| Total.....          | 53             | ...          | 1851                                                                | 461                                                        | 7   | 2   | 462              | 5   | 9   |

HALF-YEARLY REPORT for the first six months of 1850.

COUNTY OF ROUVILLE.

| Municipalities.        | Schools       |              | Number of Children attending the Schools from 5 to 16 years of age. | Six months' allowance of the sum allotted to Lower Canada. |    | Amount granted. |    |
|------------------------|---------------|--------------|---------------------------------------------------------------------|------------------------------------------------------------|----|-----------------|----|
|                        | Commissioners | Dissentient. |                                                                     | £                                                          | s. | £               | s. |
| Athanase, St. ...      | 15            | ..           | 475                                                                 | 99                                                         | 0  | 99              | 0  |
| " (Dissentients) ...   | ..            | 2            | 40                                                                  | 8                                                          | 6  | 8               | 6  |
| Brigite, Ste. ...      | ..            | ..           | 284                                                                 | 26                                                         | 13 | 26              | 13 |
| Clarenceville ...      | 9             | ..           | 321                                                                 | 27                                                         | 18 | 27              | 18 |
| Foucault ...           | 6             | ..           | 163                                                                 | 23                                                         | 7  | 23              | 7  |
| Grégoire, St. ...      | 5             | ..           | 288                                                                 | 51                                                         | 14 | 51              | 14 |
| Henriville ...         | 17            | ..           | 573                                                                 | 87                                                         | 11 | 87              | 11 |
| Jean Baptiste, St. ... | 6             | ..           | 289                                                                 | 47                                                         | 5  | 47              | 5  |
| Marie, Ste. ...        | 8             | ..           | 498                                                                 | 107                                                        | 2  | 107             | 2  |
| Mathias, St. ...       | 5             | ..           | 220                                                                 | 49                                                         | 0  | 49              | 0  |
| Rouville, ...          | 4             | ..           | 145                                                                 | 28                                                         | 3  | 28              | 3  |
| Total.....             | 80            | 2            | 3296                                                                | 556                                                        | 5  | 556             | 5  |

HALF-YEARLY REPORT for the first six months of 1850.

COUNTY OF SAGUENAY.

| Municipalities.      | Schools.      |             | Number of Children attending the Schools from 5 to 16 years of age. | Six months' allowance of the sum allotted to Lower Canada. |    |    | Amount granted. |    |    |
|----------------------|---------------|-------------|---------------------------------------------------------------------|------------------------------------------------------------|----|----|-----------------|----|----|
|                      | Commissioners | Dissenting. |                                                                     | £                                                          | s. | d. | £               | s. | d. |
| Agnès, Ste. ...      | 3             | ..          | 103                                                                 | 24                                                         | 19 | 3  | 24              | 19 | 3  |
| Bagot ...            | 6             | ..          | 211                                                                 | 27                                                         | 3  | 9  | 27              | 3  | 9  |
| Bas St. Paul ...     | 11            | ..          | 382                                                                 | 75                                                         | 9  | 4  | 75              | 9  | 4  |
| Chicoutimi ...       | 2             | ..          | 80                                                                  | 12                                                         | 7  | 2  | 12              | 7  | 2  |
| Eboulements ...      | 4             | ..          | 175                                                                 | 45                                                         | 17 | 9  | 45              | 17 | 9  |
| Irénée, St. ...      | 1             | ..          | 55                                                                  | 19                                                         | 18 | 9  | 19              | 18 | 9  |
| Isle aux Coudres ... | 4             | ..          | 137                                                                 | 16                                                         | 4  | 7  | 16              | 4  | 7  |
| Malbaie ...          | 5             | ..          | 145                                                                 | 77                                                         | 2  | 3  | 77              | 2  | 3  |
| Petite Rivière ...   | 1             | ..          | 49                                                                  | 9                                                          | 16 | 1  | 9               | 16 | 1  |
| La Ferrière ...      | ..            | ..          | .....                                                               | 6                                                          | 10 | 2  | 6               | 10 | 2  |
| Tadoussac ...        | 4             | ..          | 88                                                                  | 19                                                         | 18 | 9  | 19              | 18 | 9  |
| Urbain, St. ...      | ..            | ..          | ..                                                                  | ..                                                         | .. | .. | ..              | .. | .. |
| Total.....           | 41            | ..          | 1425                                                                | 335                                                        | 7  | 10 | 328             | 17 | 8  |

|            |    |     |      |     |   |    |     |    |   |
|------------|----|-----|------|-----|---|----|-----|----|---|
| Total..... | 41 | ... | 1425 | 335 | 7 | 10 | 328 | 17 | 8 |
|------------|----|-----|------|-----|---|----|-----|----|---|

HALF-YEARLY REPORT for the first six months of 1850.

COUNTY OF ST. HYACINTHE.

| Municipalities.  | Schools.       |              | Number of Children attending the Schools from 5 to 16 years of age. | Six months' allowance of the sum allotted to Lower Canada. |    | Amount granted. |    |
|------------------|----------------|--------------|---------------------------------------------------------------------|------------------------------------------------------------|----|-----------------|----|
|                  | Commissioners' | Dissentents. |                                                                     | £                                                          | s. | £               | s. |
| Abbotsford       | 5              | ..           | 83                                                                  | 7                                                          | 9  | 7               | 9  |
| Césaire, St...   | 17             | ..           | 629                                                                 | 103                                                        | 9  | 103             | 9  |
| Damase, St...    | 10             | ..           | 298                                                                 | 66                                                         | 1  | 66              | 1  |
| Dominique, St.   | 3              | ..           | 119                                                                 | 22                                                         | 13 | 22              | 13 |
| Hugues, St...    | 5              | ..           | 249                                                                 | 35                                                         | 13 | 35              | 13 |
| Hyacinthe, St.   | 19             | ..           | 583                                                                 | 92                                                         | 12 | 92              | 12 |
| Pic, St. ...     | 13             | ..           | 421                                                                 | 48                                                         | 17 | 48              | 17 |
| Présentation, La | 4              | ..           | 221                                                                 | 35                                                         | 3  | 35              | 3  |
| Rosalie, Ste.    | 3              | ..           | 143                                                                 | 31                                                         | 4  | 31              | 4  |
| Simon, St. ...   | 4              | ..           | 200                                                                 | 33                                                         | 5  | 33              | 5  |
| Total.....       | 83             | ..           | 2946                                                                | 476                                                        | 10 | 476             | 10 |

HALF-YEARLY REPORT for the first six months of 1850.

COUNTY OF ST. MAURICE.

| Municipalities.        | Schools.       |             | Number of Children attending the Schools from 5 to 16 years of age. | Six months' allowance of the sum allotted to Lower Canada. |    | Amount granted. |    |
|------------------------|----------------|-------------|---------------------------------------------------------------------|------------------------------------------------------------|----|-----------------|----|
|                        | Commissioners' | Dissenting. |                                                                     | £                                                          | s. | £               | s. |
| Dumontier ..           | 11             | ..          | 363                                                                 | 66                                                         | 9  | 66              | 9  |
| Gatineau ..            | 6              | ..          | 143                                                                 | 37                                                         | 13 | 37              | 13 |
| Maskinongé ..          | 9              | ..          | 453                                                                 | 80                                                         | 16 | 80              | 16 |
| Pointe du Lac ..       | 5              | ..          | 221                                                                 | 31                                                         | 1  | 31              | 1  |
| Rivière du Loup ..     | 9              | ..          | 393                                                                 | 62                                                         | 13 | 62              | 13 |
| Three Rivers (Town) .. | 3              | ..          | 136                                                                 | 63                                                         | 5  | 63              | 5  |
| Do (Banlieue) ..       | 3              | ..          | 94                                                                  | 27                                                         | 3  | 27              | 3  |
| Ursule, Ste. ..        | 6              | ..          | 209                                                                 | 39                                                         | 4  | 39              | 4  |
| Yamachiche ..          | 16             | ..          | 591                                                                 | 79                                                         | 5  | 79              | 5  |
| Total.....             | 68             | ..          | 2603                                                                | 487                                                        | 12 | 487             | 12 |

HALF-YEARLY REPORT for the first six months of 1850.

COUNTY OF SHEFFORD.

| Municipalities.  | Schools.       |              | Number of Children attending the Schools from 5 to 16 years of age. | Six months' allowance of the sum allotted to Lower Canada. |    | Amounts granted. |     |    |   |
|------------------|----------------|--------------|---------------------------------------------------------------------|------------------------------------------------------------|----|------------------|-----|----|---|
|                  | Commissioners' | Dissentient. |                                                                     | £                                                          | s. | £                | s.  |    |   |
| Brome            | 18             | ..           | 523                                                                 | 39                                                         | 17 | 6                | 39  | 17 | 6 |
| Ely              | ..             | ..           | .....                                                               | 9                                                          | 16 | 1                | 46  | 11 | 0 |
| Farnham          | 15             | ..           | 445                                                                 | 46                                                         | 11 | 0                | 34  | 17 | 0 |
| Granby           | 13             | ..           | 452                                                                 | 34                                                         | 17 | 0                | 13  | 2  | 7 |
| Milton           | 4              | ..           | 140                                                                 | 13                                                         | 2  | 7                | 9   | 18 | 9 |
| " (Dissentients) | ..             | 4            | 106                                                                 | 9                                                          | 18 | 9                | 44  | 3  | 2 |
| Shefford         | 11             | 2            | 399                                                                 | 44                                                         | 3  | 2                | 22  | 3  | 3 |
| Stukeley         | ..             | ..           | .....                                                               | 22                                                         | 3  | 3                | 220 | 9  | 4 |
| Total.....       | 61             | 6            | 2065                                                                | 220                                                        | 9  | 4                | 188 | 10 | 0 |



HALF-YEARLY REPORT for the first six months of 1850.

COUNTY OF SHERBROOKE.

| Municipalities. | Schools.       |              | Number of Children attending the Schools from 5 to 16 years of age. | Six months' allowance of the sum allotted to Lower Canada. |    |    | Amounts granted. |    |    |
|-----------------|----------------|--------------|---------------------------------------------------------------------|------------------------------------------------------------|----|----|------------------|----|----|
|                 | Commissioners' | Dissentient. |                                                                     | £                                                          | s. | d. | £                | s. | d. |
| Ascot           | 13             | ..           | 348                                                                 | 54                                                         | 9  | 1  | 54               | 9  | 1  |
| Brompton        | ..             | ..           | .....                                                               | 8                                                          | 9  | 9  | 28               | 3  | 6  |
| Bury...         | 7              | ..           | 189                                                                 | 28                                                         | 3  | 6  | 52               | 12 | 10 |
| Compton         | 15             | ..           | 697                                                                 | 10                                                         | 14 | 2  | 10               | 14 | 2  |
| Dudswell        | 5              | ..           | 103                                                                 | 45                                                         | 9  | 6  | 45               | 9  | 6  |
| Eaton           | 14             | ..           | 379                                                                 | 16                                                         | 11 | 2  | 35               | 0  | 4  |
| Hereford        | ..             | ..           | .....                                                               | 35                                                         | 0  | 4  | 51               | 13 | 2  |
| Melbourne       | 11             | ..           | 218                                                                 | 51                                                         | 13 | 2  | 5                | 18 | 8  |
| Shipton         | 13             | ..           | 281                                                                 | ..                                                         | .. | .. | ..               | .. | .. |
| Windsor         | 3              | ..           | 55                                                                  | ..                                                         | .. | .. | ..               | .. | .. |
| Total.....      | 81             | ..           | 2270                                                                | 309                                                        | 2  | 2  | 284              | 1  | 3  |

HALF-YEARLY REPORT for the first six months of 1850.

COUNTY OF STANSTEAD.

| Municipalities. | Schools.       |             | Number of Children attending the Schools from 5 to 16 years of age. | Six months' allowance of the sum allotted to Lower Canada. |    | Amount granted. |    |
|-----------------|----------------|-------------|---------------------------------------------------------------------|------------------------------------------------------------|----|-----------------|----|
|                 | Commissioners. | Dissenting. |                                                                     | £                                                          | s. | £               | s. |
| Barnston        | 20             | ...         | 656                                                                 | 62                                                         | 12 | 62              | 12 |
| Bolton          | 8              | ...         | 231                                                                 | 28                                                         | 11 | 28              | 11 |
| Hatley          | 13             | ...         | 379                                                                 | 35                                                         | 15 | 35              | 15 |
| Potton          | 12             | ...         | 293                                                                 | 29                                                         | 14 | 29              | 14 |
| Magog           | 6              | ...         | 124                                                                 | 11                                                         | 10 | 11              | 10 |
| Stanstead       | 30             | ...         | 937                                                                 | 85                                                         | 18 | 85              | 18 |
| Total.....      | 89             | ...         | 2620                                                                | 254                                                        | 3  | 254             | 3  |

HALF-YEARLY REPORT for the first six months of 1850.

COUNTY OF TERREBONNE.

| Municipalities.         | Schools.       |              | Number of Children attending the Schools from 5 to 16 years of age. | Six months' allowance of the sum allotted to Lower Canada. |    | Amount granted. |     |
|-------------------------|----------------|--------------|---------------------------------------------------------------------|------------------------------------------------------------|----|-----------------|-----|
|                         | Commissioners. | Dissentient. |                                                                     | £                                                          | s. | £               | s.  |
| Anne, Ste., des Plaines | 4              | ...          | 194                                                                 | 36                                                         | 5  | 36              | 0   |
| Bord de l'Eau           | 1              | ...          | 48                                                                  | 9                                                          | 1  | 9               | 3   |
| Bord de l'Eau, Bas de   | 1              | ...          | 35                                                                  | 7                                                          | 18 | 7               | 2   |
| " Haut du               | 7              | ...          | 35                                                                  | 6                                                          | 5  | 6               | 9½  |
| Côte St. Elzéar         | 1              | ...          | 48                                                                  | 8                                                          | 6  | 8               | 5½  |
| " St. Antoine           | ...            | ...          | .....                                                               | 5                                                          | 7  | ...             | ... |
| Bas de St. Martin       | 1              | ...          | 28                                                                  | 7                                                          | 16 | 7               | 6   |
| Village "               | 2              | ...          | 100                                                                 | 13                                                         | 14 | 13              | 7   |
| Haut de                 | 1              | ...          | 37                                                                  | 11                                                         | 5  | 11              | 9   |
| Lacorne                 | 4              | ...          | 156                                                                 | 26                                                         | 15 | 26              | 6   |
| François, St., de Sales | 3              | ...          | 88                                                                  | 19                                                         | 8  | 19              | 10  |
| Jérôme, St....          | 1              | ...          | 38                                                                  | 69                                                         | 9  | 69              | 8½  |
| " No. 4                 | 1              | ...          | 58                                                                  | 21                                                         | 5  | 21              | 11½ |
| Janvier, St....         | ...            | ...          | .....                                                               | 14                                                         | 5  | ...             | ... |
| " Village               | 2              | ...          | 80                                                                  | 10                                                         | 10 | 10              | 11  |



HALF-YEARLY REPORT for the first six months of 1850.

COUNTY OF VAUDREUIL.

| Municipalities.  | Schools.       |              | Number of Children attending the Schools from 5 to 16 years of age. | Six months' allowance of the sum allotted to Lower Canada. |    |    | Amount granted. |    |    |
|------------------|----------------|--------------|---------------------------------------------------------------------|------------------------------------------------------------|----|----|-----------------|----|----|
|                  | Commissioners' | Dissentient. |                                                                     | £                                                          | s. | d. | £               | s. | d. |
| Côteau du Lac    | 8              | ...          | 268                                                                 | 68                                                         | 15 | 10 | 68              | 15 | 10 |
| Isle Perrot      | 2              | ...          | 66                                                                  | 23                                                         | 1  | 4  | 23              | 1  | 4  |
| Marthe, Ste...   | 5              | ...          | 147                                                                 | 26                                                         | 15 | 6  | 26              | 15 | 6  |
| Newton           | 2              | ...          | 46                                                                  | 9                                                          | 6  | 3  | 9               | 6  | 3  |
| New Longueuil    | 9              | ...          | 356                                                                 | 58                                                         | 6  | 1½ | 58              | 6  | 1½ |
| " (Dissentients) | ...            | 2            | 55                                                                  | 9                                                          | 0  | 1  | 9               | 0  | 1  |
| Rigaud           | 9              | ...          | 342                                                                 | 61                                                         | 18 | 2  | 61              | 18 | 2  |
| " (Dissentients) | ...            | 1            | 42                                                                  | 9                                                          | 12 | 1  | 9               | 12 | 1  |
| Soulanges        | 5              | ...          | 280                                                                 | 47                                                         | 19 | 0  | 47              | 19 | 0  |
| Vaudreuil        | 8              | ...          | 335                                                                 | 69                                                         | 10 | 8  | 69              | 10 | 8  |
| Zotique, St...   | 3              | 1            | 157                                                                 | 31                                                         | 19 | 3½ | 31              | 19 | 3½ |
| Total.....       | 51             | 4            | 2094                                                                | 416                                                        | 4  | 4  | 416             | 4  | 4  |

|            |    |   |      |     |   |   |
|------------|----|---|------|-----|---|---|
| Total..... | 51 | 4 | 2094 | 416 | 4 | 4 |
|------------|----|---|------|-----|---|---|

HALF-YEARLY REPORT for the first six months of 1850.

COUNTY OF VERCHÈRES.

| Municipalities. | Schools.      |              | Number of Children attending the Schools from 5 to 16 years of age. | Six months' allowance of the sum allotted to Lower Canada. |         | Amounts granted. |         |    |    |
|-----------------|---------------|--------------|---------------------------------------------------------------------|------------------------------------------------------------|---------|------------------|---------|----|----|
|                 | Commissioners | Dissentient. |                                                                     | f s. d.                                                    | f s. d. | f s. d.          | f s. d. |    |    |
| Antoine, St...  | 6             | ...          | 191                                                                 | 33                                                         | 13      | 11               | 33      | 13 | 11 |
| Belœil .....    | 5             | ...          | 298                                                                 | 43                                                         | 18      | 3                | 43      | 18 | 3  |
| Contrecoeur...  | 4             | ...          | 226                                                                 | 44                                                         | 6       | 6                | 44      | 6  | 6  |
| Marc, St. ....  | 3             | ...          | 185                                                                 | 24                                                         | 9       | 4                | 24      | 9  | 4  |
| Varenes .....   | 9             | ...          | 456                                                                 | 86                                                         | 0       | 3                | 86      | 0  | 3  |
| Verchères ...   | 3             | ...          | 269                                                                 | 51                                                         | 11      | 6                | 51      | 11 | 6  |
| Total.....      | 30            | ...          | 1565                                                                | 283                                                        | 19      | 9                | 283     | 19 | 9  |

HALF-YEARLY REPORT for the first six months of 1850.

COUNTY OF YAMASKA.

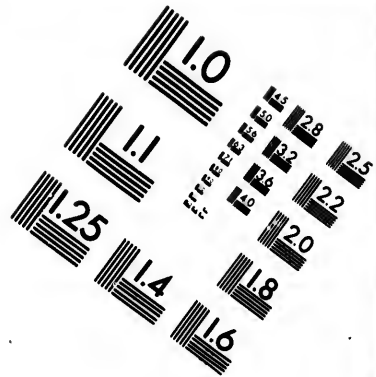
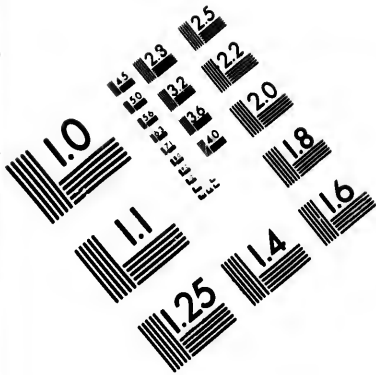
| Municipalities.      | Schools.       |              | Number of Children attending the Schools from 5 to 16 years of age. | Sixmonths' allowance of the sum allotted to Lower Canada. |    |    | Amount granted. |    |    |
|----------------------|----------------|--------------|---------------------------------------------------------------------|-----------------------------------------------------------|----|----|-----------------|----|----|
|                      | Commissioners. | Dissentient. |                                                                     | £                                                         | s. | d. | £               | s. | d. |
| Baie du Fevre        | 9              | ..           | 421                                                                 | 73                                                        | 18 | 0  | 73              | 18 | 0  |
| David, St. ...       | 6              | ..           | 283                                                                 | 52                                                        | 1  | 5  | 52              | 1  | 5  |
| François du Lac, St. | 8              | ..           | 219                                                                 | 87                                                        | 18 | 1  | 87              | 18 | 1  |
| Yamaska              | ..             | ..           | .....                                                               | 53                                                        | 16 | 0  |                 |    |    |
| Séphyrin, St.        | ..             | ..           | .....                                                               | 16                                                        | 4  | 6  |                 |    |    |
| Total.....           | 23             | ..           | 923                                                                 | 284                                                       | 8  | 0  | 213             | 17 | 6  |

RECAPITULATION for the first six months of 1850.

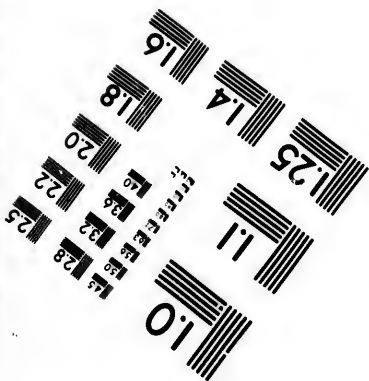
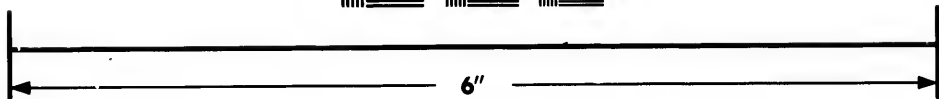
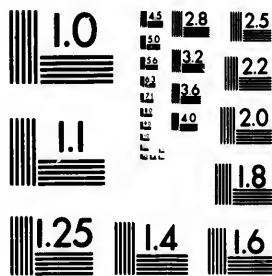
| Counties.            | Amount allotted. |    | Amount granted. |    |                 | Schools.       |             | Number of children. |
|----------------------|------------------|----|-----------------|----|-----------------|----------------|-------------|---------------------|
|                      | £                | s. | £               | s. | d.              | Commissioners. | Dissenting. |                     |
| Beauharnois          | 683              |    | 633             | 7  | 10              | 123            | 9           | 5099                |
| Bellechasse          | 312              |    | 270             | 1  | 2 $\frac{1}{2}$ | 48             | ...         | 1648                |
| Berthier             | 592              | 10 | 569             | 17 | 4               | 59             | ...         | 2747                |
| Bonaventure          | 167              | 14 | 159             | 10 | 9               | 21             | 1           | 660                 |
| Chambly              | 400              | 11 | 400             | 11 | 3               | 40             | 3           | 2239                |
| Champlain            | 224              | 13 | 166             | 16 | 7               | 23             | ...         | 959                 |
| Deux-Montagnes       | 614              | 17 | 503             | 18 | 0 $\frac{1}{2}$ | 71             | 1           | 2720                |
| Dorchester           | 795              | 13 | 491             | 0  | 5               | 79             | 1           | 2748                |
| Drummond             | 218              | 14 | 113             | 10 | 7               | 23             | ...         | 627                 |
| Gaspé                | 177              | 10 | 69              | 4  | 2               | 9              | ...         | 233                 |
| Huntingdon           | 796              | 3  | 796             | 3  | 8               | 92             | 1           | 4591                |
| Kamouraska           | 393              | 3  | 308             | 7  | 5               | 32             | ...         | 1022                |
| L'Islet              | 375              | 7  | 91              | 17 | 2               | 11             | ...         | 637                 |
| Leinster             | 553              | 4  | 553             | 4  | 6               | 72             | ...         | 3062                |
| Lotbinière           | 329              | 19 | 294             | 8  | 11              | 46             | ...         | 1436                |
| Mégantic             | 181              | 8  | 71              | 19 | 5               | 15             | ...         | 486                 |
| Missisquoi           | 233              | 13 | 233             | 13 | 0               | 72             | ...         | 2303                |
| Montmorency          | 164              | 3  | 150             | 0  | 6               | 22             | ...         | 1043                |
| Carried forward..... | 7215             | 10 | 5928            | 12 | 9               | 853            | 16          | 34265               |







**IMAGE EVALUATION  
TEST TARGET (MT-3)**



**Photographic  
Sciences  
Corporation**

23 WEST MAIN STREET  
WEBSTER, N.Y. 14580  
(716) 872-4503



## RECAPITULATION for the first six months of 1850.—Continuation.

| Counties.            | Amount allotted. | Amount granted. | Schools.       |             | Number of children. |
|----------------------|------------------|-----------------|----------------|-------------|---------------------|
|                      |                  |                 | Commissioners. | Dissenters. |                     |
| Brought forward..... | £ 7315 10        | 5927 12 10      | 858            | 16          | 34263               |
| Montréal ..          | 604 7 8          | 604 7 8         | 62             | ..          | 2891                |
| Nicolet ..           | 369 8 5          | 325 0 3         | 54             | ..          | 2452                |
| Ottawa ..            | 270 14 5         | 162 10 0        | 29             | 1           | 849                 |
| Portneuf ..          | 352 5 8          | 292 16 0        | 41             | ..          | 1704                |
| Quebec ..            | 650 6 1          | 555 12 5        | 41             | ..          | 2966                |
| Richelieu ..         | 471 5 0          | 471 5 0         | 50             | 1           | 2519                |
| Rimouski ..          | 461 7 2          | 402 5 9         | 53             | ..          | 1851                |
| Rouville ..          | 556 5 5          | 556 5 5         | 80             | 2           | 3296                |
| Saguenay ..          | 335 7 10         | 328 17 8        | 41             | ..          | 1425                |
| St. Hyacinthe ..     | 476 10 6         | 476 10 6        | 83             | ..          | 2946                |
| St. Maurice ..       | 487 12 10        | 487 12 10       | 68             | ..          | 2603                |
| Shefford ..          | 220 9 4          | 188 10 0        | 61             | 9           | 2065                |
| Sherbrooke ..        | 309 2 2          | 284 1 3         | 81             | ..          | 2370                |
| Stanstead ..         | 254 3 3          | 254 3 3         | 89             | ..          | 2620                |
| Terrebonne ..        | 480 19 4         | 461 7 1         | 50             | 1           | 2339                |
| Vaudreuil ..         | 416 4 4          | 416 4 4         | 51             | 2           | 2094                |
| Verchères ..         | 283 19 9         | 283 19 9        | 30             | ..          | 1565                |
| Yanaska ..           | 284 8 0          | 213 17 6        | 23             | ..          | 923                 |
| Total.....           | £ 14500 0 0      | 12693 1 43      | 1845           | 34          | 73551               |

J. B. MEILLEUR, S. E.

73551

34

431040

1

12000

v

v

cccc

1

J. B. MEILLEUR, S. E.

