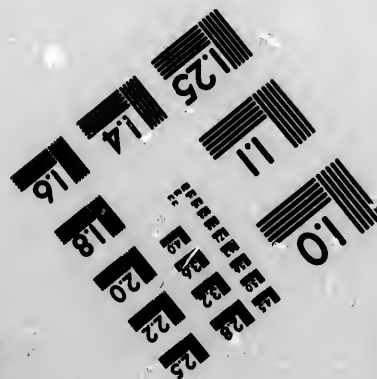
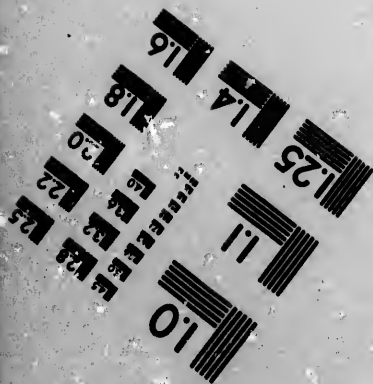
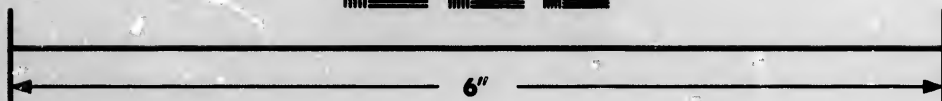
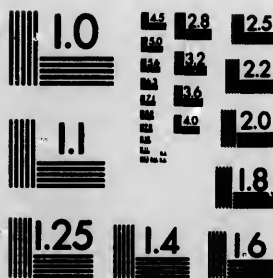


**IMAGE EVALUATION
TEST TARGET (MT-3)**



**Photographic
Sciences
Corporation**

23 WEST MAIN STREET
WEBSTER, N.Y. 14590
(716) 872-4503

LE 128 125
EE 132
ES 120
L 18

**CIHM/ICMH
Microfiche
Series.**

**CIHM/ICMH
Collection de
microfiches.**



Canadian Institute for Historical Microreproductions / Institut canadien de microreproductions historiques

10
01

© 1987

Technical and Bibliographic Notes/Notes techniques et bibliographiques

The Institute has attempted to obtain the best original copy available for filming. Features of this copy which may be bibliographically unique, which may alter any of the images in the reproduction, or which may significantly change the usual method of filming, are checked below.

L'Institut a microfilmé le meilleur exemplaire qu'il lui a été possible de se procurer. Les détails de cet exemplaire qui sont peut-être uniques du point de vue bibliographique, qui peuvent modifier une image reproduite, ou qui peuvent exiger une modification dans la méthode normale de filmage sont indiqués ci-dessous.

- Coloured covers/
Couverture de couleur
- Covers damaged/
Couverture endommagée
- Covers restored and/or laminated/
Couverture restaurée et/ou pelliculée
- Cover title missing/
Le titre de couverture manque
- Coloured maps/
Cartes géographiques en couleur
- Coloured ink (i.e. other than blue or black)/
Encre de couleur (i.e. autre que bleue ou noire)
- Coloured plates and/or illustrations/
Planches et/ou illustrations en couleur
- Bound with other material/
Relié avec d'autres documents
- Tight binding may cause shadows or distortion along interior margin/
La reliure serrée peut causer de l'ombre ou de la distorsion le long de la marge intérieure
- Blank leaves added during restoration may appear within the text. Whenever possible, these have been omitted from filming/
Il se peut que certaines pages blanches ajoutées lors d'une restauration apparaissent dans le texte, mais, lorsque cela était possible, ces pages n'ont pas été filmées.
- Additional comments:/
Commentaires supplémentaires:
[Printed Ephemera] 1 sheet
- Coloured pages/
Pages de couleur
- Pages damaged/
Pages endommagées
- Pages restored and/or laminated/
Pages restaurées et/ou pelliculées
- Pages discoloured, stained or foxed/
Pages décolorées, tachetées ou piquées
- Pages detached/
Pages détachées
- Showthrough/
Transparence
- Quality of print varies/
Qualité inégale de l'impression
- Includes supplementary material/
Comprend du matériel supplémentaire
- Only edition available/
Seule édition disponible
- Pages wholly or partially obscured by errata slips, tissues, etc., have been refilmed to ensure the best possible image/
Les pages totalement ou partiellement obscurcies par un feuillet d'errata, une pelure, etc., ont été filmées à nouveau de façon à obtenir la meilleure image possible.

This item is filmed at the reduction ratio checked below/
Ce document est filmé au taux de réduction indiqué ci-dessous.

10X	12X	14X	16X	18X	20X	22X	24X	26X	28X	30X	32X
<input type="checkbox"/>	<input type="checkbox"/>	<input type="checkbox"/>	<input type="checkbox"/>	<input type="checkbox"/>	<input type="checkbox"/>	<input type="checkbox"/>	<input checked="" type="checkbox"/>	<input type="checkbox"/>	<input type="checkbox"/>	<input type="checkbox"/>	<input type="checkbox"/>

The copy filmed here has been reproduced thanks to the generosity of:

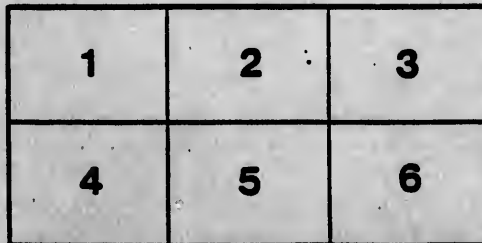
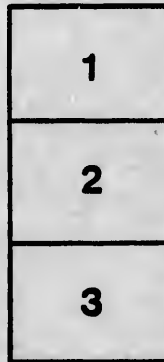
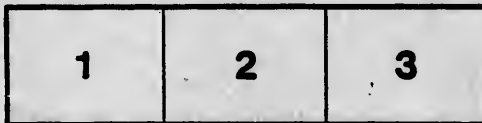
Archives of Ontario
Toronto

The images appearing here are the best quality possible considering the condition and legibility of the original copy and in keeping with the filming contract specifications.

Original copies in printed paper covers are filmed beginning with the front cover and ending on the last page with a printed or illustrated impression, or the back cover when appropriate. All other original copies are filmed beginning on the first page with a printed or illustrated impression, and ending on the last page with a printed or illustrated impression.

The last recorded frame on each microfiche shall contain the symbol \rightarrow (meaning "CONTINUED"), or the symbol ∇ (meaning "END"), whichever applies.

Maps, plates, charts, etc., may be filmed at different reduction ratios. Those too large to be entirely included in one exposure are filmed beginning in the upper left hand corner, left to right and top to bottom, as many frames as required. The following diagrams illustrate the method:



L'exemplaire filmé fut reproduit grâce à la générosité de:

Archives of Ontario
Toronto

Les images suivantes ont été reproduites avec le plus grand soin, compte tenu de la condition et de la netteté de l'exemplaire filmé, et en conformité avec les conditions du contrat de filmage.

Les exemplaires originaux dont la couverture en papier est imprimée sont filmés en commençant par le premier plat et en terminant soit par la dernière page qui comporte une empreinte d'impression ou d'illustration, soit par le second plat, selon le cas. Tous les autres exemplaires originaux sont filmés en commençant par la première page qui comporte une empreinte d'impression ou d'illustration et en terminant par la dernière page qui comporte une telle empreinte.

Un des symboles suivants apparaîtra sur la dernière image de chaque microfiche, selon le cas: le symbole \rightarrow signifie "A SUIVRE", le symbole ∇ signifie "FIN".

Les cartes, planches, tableaux, etc., peuvent être filmés à des taux de réduction différents. Lorsque le document est trop grand pour être reproduit en un seul cliché, il est filmé à partir de l'angle supérieur gauche, de gauche à droite, et de haut en bas, en prenant le nombre d'images nécessaire. Les diagrammes suivants illustrent la méthode.



— THE —

**SHORTEST AND MOST DIRECT ROUTE
BETWEEN ALL POINTS**

EAST AND WEST

**MONTREAL,
QUEBEC, PORTLAND**
Boston, New York, St. Thomas, Buffalo, Hamilton, Niagara Falls, Kingston,
London, Sarala, Toronto, Guelph, Fort Huron, Detroit, Goderich,
Wlarton, Southampton, Kincardine.

CLOSE CONNECTIONS
MADE WITH ALL PRINCIPAL RAILWAYS IN
CANADA AND THE UNITED STATES.

JOS. HICKSON,
Gen. Man.
W. WAINWRIGHT,
Asst. Man.

L. J. SEARGEANT,
Traffic Manager.
WM. EDGAR,
Gen. Pass. Agt.

P.M. P.M. A.M. A.M. A.M. A.M.

Grand Trunk Railway

Avoid Transfers and Changes,

—AND BOOK—

THROUGH TO DESTINATION

BY THE

GRAND TRUNK RAILWAY

— THE GREAT —

Niagara Falls Route

— BETWEEN —

NEW YORK, BOSTON & CHICAGO.

**No Change required at Toronto for
Through Passengers via G.T.R.**

— THE GREAT —

INTERNATIONAL ROUTE

— BETWEEN THE —

ATLANTIC AND PACIFIC

Through Tickets to and from Montreal, Quebec, Portland, New York, Boston, Niagara Falls, Hamilton, St. Thomas, Kingston, Guelph, Toronto, Sarnia, London, Goderich, Warton, Southampton, Kincardine, Detroit, Chicago, Milwaukee, Texas, Kansas, and the North-West Territories.

Close connections made at Chicago, Detroit, Buffalo and Niagara Falls for various routes to the East and West, also, via Montreal and the Victoria Bridge for Eastern States and Lower Provinces.

No change via this route between Montreal and Chicago.

The only line running **Pullman Palace Drawing Room** and **Sleeping Cars** through to Chicago.

The Great Excursion Route during the Summer Season in connection with the Richelieu and Ontario Line of Steamers from Niagara Falls or Kingston down the far-famed St. Lawrence Rapids, passing the Victoria Bridge for Montreal, Quebec, the Saguenay, White Mountains, Lakes Champlain and George, and the Hudson River to New York.

Niagara Falls issue of Excursion Tickets for an extensive variety of tours, to be had at all principal Ticket Agencies in the United States and Canada.

Passengers to Manitoba and the North-West Territories via Sarnia and the Lakes, or via Chicago and Milwaukee, also for all points in Michigan, Wisconsin, Minnesota, Illinois, Indiana, Missouri, Kansas, Arkansas, Texas, and the Pacific Coast, will find this the most pleasant and direct route. Every facility afforded for through tickets at the most favorable fares.

BAGGAGE CHECKED THROUGH

Steel Rails, First-class Rolling Stock, Courteous Employés, and every facility afforded.



— THE —
SHORTEST AND MOST DIRECT ROUTE

BETWEEN ALL POINTS

EAST AND WEST

MONTREAL, QUEBEC, PORTLAND

Boston, New York, St. Thomas, Buffalo, Hamilton, Niagara Falls, Kingston,
 London, Sarnia, Toronto, Guelph, Fort Erie, Detroit, Goderich,
 Windsor, Southampton, Kincardine.

— CLOSE CONNECTIONS —

MADE WITH ALL PRINCIPAL RAILWAYS IN

CANADA AND THE UNITED STATES.

JOS. HICKSON,	L. J. SEARJEANT,
Gen. Man.	Traffic Manager.
W. WAINWRIGHT,	WM. EDGAR,
Asst. Man.	Gen. Pass. Art.

Grand Trunk Railway

**Avoid Transfers and Changes,
 — AND BOOK —
 THROUGH TO DESTINATION**

BY THE
GRAND TRUNK RAILWAY

— THE GREAT — Niagara Falls Route

— BETWEEN —
NEW YORK, BOSTON & CHICAGO.

No Change required at Toronto for
 Through Passengers via G.T.R.

— THE GREAT — INTERNATIONAL ROUTE

— BETWEEN THE —
ATLANTIC AND PACIFIC

Through Tickets to and from Montreal, Quebec, Portland, New York, Boston, Niagara Falls, Hamilton, St. Thomas, Kingston, Guelph, Toronto, Sarnia, London, Goderich, Windsor, Southampton, Kincardine, Detroit, Chicago, Milwaukee, Texas, Kansas, and the North-West Territories.

Close connections made at Chicago, Detroit, Buffalo and Niagara Falls for various routes to the East and West, also, via Montreal and the Victoria Bridge for Eastern States and Lower Provinces.

No change via this route between Montreal and Chicago.

The only line running Pullman Palace Drawing Room and Sleeping Cars through to Chicago.

The Great Excursion Route during the Summer Season in connection with the Michellieus and Ontario Line of Steamers from Niagara Falls or Kingston down the far-famed St. Lawrence Rapids, passing the Victoria Bridge for Montreal, Quebec, the Saguenay, White Mountains, Lakes Champlain and George, and the Hudson River to New York.

Niagara Falls issue of Excursion Tickets for an extensive variety of tours, to be had at all principal Ticket Agencies in the United States and Canada.

Passengers to Manitoba and the North West Territories via Sarnia and the Lakes, or via Chicago and Milwaukee, also for all points in Michigan, Wisconsin, Minnesota, Illinois, Indiana, Missouri, Kansas, Arkansas, Texas, and the Pacific Coast, will find this the most pleasant and direct route. Every facility afforded for through tickets at the most favorable fares.

BAGGAGE CHECKED THROUGH

Steel Rails, First-class Rolling Stock, Courteous Employes, and every facility afforded.

The GRAND TRUNK RAILWAY has been relaid with Steel Rails. The Gauge has been narrowed to American Standard. It has added to the Rolling Stock new Locomotives and elegant new Passenger with all the latest improvements, thus making a First Class Line in every respect.

PALACE SLEEPING CARS attached to all Day and Night Through Trains. Through Tickets are delivered from all important centres.

PULLMAN CARS run through without change from Montreal to Chicago and vice versa. PARLOR and SLEEPING CARS are run through via Suspension Bridge, connecting New York, Toronto, Buffalo, Detroit, Chicago and St. Louis without change.

TORONTO LINE.

Express	Exp'sse	Accom.	Exp'sse	Mail.	Exp'sse (Daily)	Mixed.
9:00am	9:05am	12:20pm	3:10pm	5:35pm	6:35pm	9:00pm
09	17	12	3	5	6	9
17	9	12	3	5	6	9
45	9	12	3	5	6	9
55	1	12	3	5	6	9
01	1	12	3	5	6	9
15	1	12	3	5	6	9
35	10	12	3	5	6	9
Dep.	11:00pm	7:10am	9:15am	3:55pm	5:55pm	
11:20	7:32	9:15	3:55	5:55		
7:45	7:55	12:47	4:21	6:05		
8:08	9:56	1:03	4:37	6:15		
8:17	1:13	4:37	6:37	6:30		
8:30	10:18	1:28	4:57	6:47		
8:37	8:57	1:36	5:10	7:20		
12:30am	4:30	1:45	5:10	7:30		

Toronto 6.35, 10.55 a.m., and 2.00, 4.35 and 6.55 p.m.
 11.35 a.m., 2.25, 5.55 and 7.10 p.m., calling at Queens.

MAIN LINE, GOING EAST.

STATIONS.	Limit'd Exp'sse (Sundays included).	Atl'ntic Exp'sse (Sundays included).		Day Exp'sse	St. Louis Exp'sse (Sundays included)	Mixed.
		Mail.	Mixed.			
ST. LOUIS	7:43am					
CHICAGO (via C>) Dep.	9:25am	8:15pm			6:40pm	
CHICAGO B.O. & Wab	9:45pm	8:45			10:05pm	
MILWAUKEE Dep.	11:45am				12:05pm	
DETROIT (D.S. & M. Dep't)	12:00pm	6:25am			5:50pm	
WINDSOR Dep.	1:40am	8:00	11:20am	7:00am	1:40	7:30
Tecumseh			11:48	7:14		7:50
Belle River			12:20pm	7:30		8:15
St. Clair			12:55pm			8:31
Stoney Point			7:47			9:40
Jeannette's Creek			1:10	9:00		8:55
CHATHAM	2:45	0:05	2:05	8:25	2:40	9:30
Yoshburg	2:50	9:10	3:00	8:30	2:50	9:40
Lewistown			3:15	8:50		
Thamesville			3:24	9:03		
Newbury			3:39	9:18		
Glencoe			4:00	9:20		10:45
Appin			4:13	9:30		
Longwood			4:28	9:45		11:17
Mount Brdges			4:38	9:53		
Komoka			5:07	10:05		
LONDON	4:30	11:05	5:20	10:28		
Dep.	4:45	6:00am	11:30	5:45pm	10:50	4:25
					2:20pm	12:45am
					4:30	7:00pm

AUGUST 25th 1886.

GRAND TRUNK RAILWAY GENERAL P

Eastern Standard Time as far West as Sarnia.

Flag Stations, Trains stop only on signal

GOING WEST.

NEW YORK, BOSTON AND PORTLAND TO MONTREAL.

Table with columns: Miles, STATIONS, Mixed, Pass., Exp., and Pass. for the New York, Boston and Portland to Montreal route.

BUFFALO and GODERICH

Table with columns: Miles, STATIONS, Express, Express, Mixed, and Mixed for the Buffalo and Goderich route.

Fullman Sleeping Car from New York to Chicago on express trains daily Sunday included. Pullman leaving Chicago

GEORGIAN BAY AND LAKE ERIE

Table with columns: Miles, STATIONS, Express, Express, Mixed, and Mixed for the Georgian Bay and Lake Erie route.

MONTREAL TO TORONTO, DETROIT AND CHICAGO.

Table with columns: Miles, STATIONS, Pass., Mix., Pass., Pass., and Ottawa Express Trains for the Montreal to Toronto, Detroit and Chicago route.

NOTE.—Train leaving Warrton at 5.20 a.m. will run only on Mondays, Wednesday Train leaving Palmerston at 6.35 p.m. will run only on Mondays, Wednesday

MONTREAL, RICHMOND AND QUEBEC.

Table with columns: Miles, STATIONS, Exp., Exp., Mix., STATIONS, Pass., Express, Mix., and Mix for the Montreal, Richmond and Quebec route.

Table with columns: Dep., 11.00pm, 7.10am, 9.15am, 12.30, 3.55pm, 5.55pm. Rows include times for various routes.

h, Grey, & Bruce Division.

Table with columns: Dep., Mail, Express, Accom., *Fixed. Rows include departure and arrival times for Grey and Bruce divisions.

OUTH.

Table with columns: Dep., 8.00am, 9.35am, 10.10, 10.15, 2.30pm. Rows include times for southern routes.

C. & B. South Extension.

Table with columns: Going North, STATIONS, Going South. Rows include station names and times for C. & B. South Extension.

Large table with columns: STATIONS, Dep., Arr., 11.30, 1.30, 4.00am, 11.30, 4.50pm, 8.30, 9.30, 10.45, 11.17, 12.45am, 7.00pm, 7.30, 8.27, 9.43. Rows include CHATHAM, LONDON, HARRISBURG, HAMILTON, NIAGARA FALLS, BUFFALO, ROCHESTER, WINDHAM.

London, Huron, & Bruce Division.

Table with columns: GOING NORTH, STATIONS, Mail, Accom., GOING SOUTH, STATIONS, Exp., Mail, Accom. Rows include stations like LONDON, Hyde Park Junction, Ettrick, etc.

Sarnia Division.

Table with columns: GOING EAST, STATIONS, Exp., Mail, Accom., GOING WEST, STATIONS, Exp., Mail, Accom. Rows include stations like LONDON DEP, Hyde Park, Komoka, etc.

London & Port Stanley Division.

Table with columns: Going South, STATIONS, Mail, Accom., Going North, STATIONS, Mail, Accom. Rows include stations like Port Stanley, White's, ST. THOMAS, etc.

Eastern Standard Time.

† Flag Stations—Trains stop only when Passengers at or for.

TRAIN SLEEPING CARS ON ALL NIGHT TRAINS

LOUIS EXPRESS GOING EAST, AND PACIFIC EXPRESS GOING WEST. EDGAR, General Passenger Agent. JOSEPH HICKSON, General Manager.

