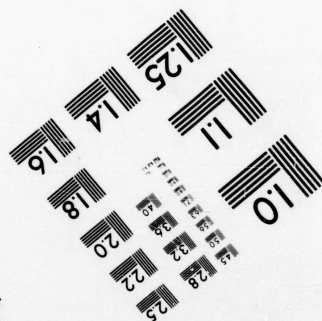
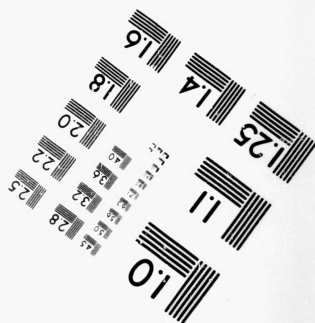
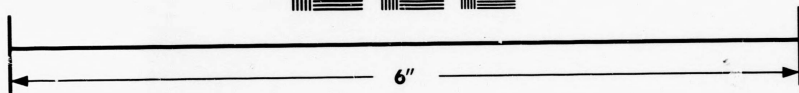
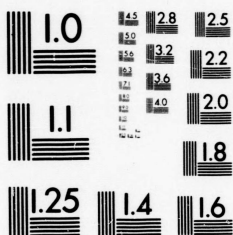


# IMAGE EVALUATION TEST TARGET (MT-3)



# Photographic Sciences Corporation

**23 WEST MAIN STREET  
WEBSTER, N.Y. 14580  
(716) 872-4503**

## Canadian I

**CIHM/ICMH  
Microfiche  
Series.**

**CIHM/ICMH  
Collection de  
microfiches.**



Canadian Institute for Historical Microreproductions

Institut canadien de microreproductions historiques

**1979**

# Technical Notes / Notes techniques

The Institute has attempted to obtain the best original copy available for filming. Physical features of this copy which may alter any of the images in the reproduction are checked below.

- ☐ Coloured covers/  
Couvertures de couleur
- ☐ Coloured maps/  
Cartes géographiques en couleur
- ☐ Pages discoloured, stained or foxed/  
Pages décolorées, tachetées ou piquées
- ☐ Tight binding (may cause shadows or distortion along interior margin)/  
Reliure serrée (peut causer de l'ombre ou de la distortion le long de la marge intérieure)
- ☐ Additional comments/  
Commentaires supplémentaires

L'Institut a microfilmé le meilleur exemplaire qu'il lui a été possible de se procurer. Certains défauts susceptibles de nuire à la qualité de la reproduction sont notés ci-dessous.

- ☐ Coloured pages/  
Pages de couleur
- ☐ Coloured plates/  
Planches en couleur
- ☐ Show through/  
Transparence
- ☐ Pages damaged/  
Pages endommagées

## Bibliographic Notes / Notes bibliographiques

- ☐ Only edition available/  
Seule édition disponible
- ☐ Bound with other material/  
Relié avec d'autres documents
- ☐ Cover title missing/  
Le titre de couverture manque
- ☐ Plates missing/  
Des planches manquent
- ☐ Additional comments/  
Commentaires supplémentaires
- ☐ Pagination incorrect/  
Erreurs de pagination
- ☐ Pages missing/  
Des pages manquent
- ☐ Maps missing/  
Des cartes géographiques manquent

The im  
possibl  
of the  
filming

The las  
contain  
or the  
applies

The ori  
filmed  
institut

Maps o  
in one  
upper l  
bottom  
followi

mplaire  
Certains  
ilité de la

The images appearing here are the best quality possible considering the condition and legibility of the original copy and in keeping with the filming contract specifications.

The last recorded frame on each microfiche shall contain the symbol → (meaning "CONTINUED"), or the symbol ∇ (meaning "END"), whichever applies.

The original copy was borrowed from, and filmed with, the kind consent of the following institution:

National Library of Canada

Maps or plates too large to be entirely included in one exposure are filmed beginning in the upper left hand corner, left to right and top to bottom, as many frames as required. The following diagrams illustrate the method:

1	2	3
---	---	---

1
2
3

1	2	3
4	5	6

Les images suivantes ont été reproduites avec le plus grand soin, compte tenu de la condition et de la netteté de l'exemplaire filmé, et en conformité avec les conditions du contrat de filmage.

Un des symboles suivants apparaîtra sur la dernière image de chaque microfiche, selon le cas: le symbole → signifie "A SUIVRE", le symbole ∇ signifie "FIN".

L'exemplaire filmé fut reproduit grâce à la générosité de l'établissement prêteur suivant :

Bibliothèque nationale du Canada

Les cartes ou les planches trop grandes pour être reproduites en un seul cliché sont filmées à partir de l'angle supérieure gauche, de gauche à droite et de haut en bas, en prenant le nombre d'images nécessaire. Le diagramme suivant illustre la méthode :

quent



TN 424

C32

B4

fol.

T

250,0

All ot

H. M  
ROB  
U. M  
THO

The A

I  
seen o  
and t  
are su  
away  
Goode

I  
ing pr

T  
per to  
from \$

V  
The T  
north,  
sarily

For w  
"Alfe"  
Colum  
of the

T  
which  
purcha  
work a  
and it

AC  
MAY BE

A  
PER S

Pr

Br

# The Alf Gold Mining Company,

LIMITED LIABILITY.

INCORPORATED UNDER THE LAWS OF BRITISH COLUMBIA.

Mine Located at Rossland, Trail Creek Gold Mining District, British Columbia

CAPITALIZATION, \$1,000,000.

SHARES PAR VALUE \$1.00 EACH. - - FULLY PAID AND NON-ASSESSABLE.

250,000 shares have been placed in the hands of a reliable trustee, who is responsible for the proper return to the Company of the proceeds of any sale made by him of such shares.

All other shares are now pooled in the hands of the same trustee, so that purchasers of above stock need have no fear of promoters offering private stock below the market price.

LLOYD HARRIS, ESQ., Brantford and London, Eng. - - President.  
W. G. ELLIOTT, Contractor, Brantford, Ont. - - Vice-President.  
W. E. PHIN, Contractor, Brantford, Ont. - - Secretary-Treasurer.

#### STOCKHOLDERS---SHARES POOLED.

H. McK. WILSON, Q. C., Brantford.	THOS. WOODYATT, P. M., Brantford, Ont.
ROBT. SCOTT, Esq., Prop. Victoria Wheel Works, Galt.	J. A. SMITH, Esq., Broker, Rossland.
U. M. STANLEY, M. D., Brantford.	D. J. WATEROUS, Esq., M'fr, Brantford.
THOS. NIHAN, Esq., Steamboat Owner, St. Catharines.	H. KING, Esq., Rossland.

BANKERS, BANK OF BRITISH NORTH AMERICA, ROSSLAND, B. C.

#### OFFICES, ROSSLAND, B. C.

The ALFE GOLD MINE was located April 17th, 1895, recorded May 1st, 1895, and has since been purchased by the ALF GOLD MINING COMPANY, (Limited Liability.)

It has been surveyed, and is fully paid for. See Government Records at Rossland, B. C.

#### LOCATION.

It is situated in the South Belt of the Trail Creek district, about one mile from Rossland, B.C., and can be seen quite easily from the main street of that town. It adjoins such well known properties as the "Hill Top" and the "May Flower" which was the first mine to ship ore over the Trail Creek Railway. Close to it also are such valuable mines as the "Curlew," "Gopher," "Homestake" and "Hattie Brown," and not 1,500 feet away are the "Maid of Erin" and "R. E. Lee," a bond on which was purchased recently by Messrs. Gooderham and Blackstock of Toronto.

#### DESCRIPTION.

Ledges on the "Alfe" have been opened at several places with the same indications as were found on adjoining properties.

Two shafts have been started from which ore has been taken assaying from four to eight dollars in Gold per ton; while after development the May Flower, which adjoins it, has been shipping ore to the smelter assaying from \$56.00 to \$107.00 per ton.

Very few mines in British Columbia are better situated for the transportation of ore than the "Alfe." The Trail Creek Railway running to the smelter at Trail, passes below the property about 1500 feet to the north, so that the ore by means of a chute can be placed on the cars below, thus saving a great expense necessarily incurred by other mines.

#### THE OBJECT

For which the Alf Gold Mining Company, Limited Liability, was formed is for the development of the "Alfe" and other mines which may be purchased by the Company, situated in the rich gold fields of British Columbia, and allowing its shareholders to participate in the results from the great yield now being taken out of the mountains in that Province.

The company does not claim to have a Gold Mine fully developed with shipping ore. If they did the stock which is now being offered for the purposes of the company at the low price of 10 cents per share could not be purchased for these figures. But they do claim that the ALFE MINE, owing to its location and indications from work already done, offers as good inducements to investors as any other mining property now before the public, and it is their intention to push development as rapidly as possible.

ACTIVE DEVELOPMENT IS NOW GOING ON, UNDER MR. E. W. LILJECRAN, (FORMERLY MANAGER OF THE LE ROI), AND SHIPPING ORE MAY BE STRUCK AT ANY TIME, WHEN THE PRICE OF SHARES WILL BE ADVANCED.

A limited number of the 250,000 shares held in trust are now being offered for sale at TEN CENTS PER SHARE.

Proceeds to go into the treasury and be used entirely for the purposes of the Company.

BRANTFORD, Nov. 10th, 1896.

(OVER)

# REASONS FOR BUYING "ALF."

It is a Canadian Mine, surveyed and fully paid for; incorporated under Canadian laws (British Columbia); controlled by Canadian citizens.

It will have careful and economical management—the officers personally managing the Company's affairs. The Company has no salaried officers.

The mine is located close to the railway, about one mile from Rossland, in the heart of the finest mining district in the world. Cost of mining and transportation will be very low.

The mine has been examined by officers of the Company, who went direct to Rossland for that purpose.

There is now over \$5,000 in the treasury for development, which amount is daily increasing.

Cabins and shops have been built for winter work. Development is fast proceeding under Mr. Liljegrän, (formerly Manager of the Le Roi), who is one of the best mining men in the camp.

The Stock will advance as development proceeds.

The Company's operations will not be confined to the "Alfe." They intend putting prospectors in the field next spring, with a view to securing and developing other properties.

The "Alfe" and any additional properties secured by the Company will be owned by the shareholders of the Alf Gold Mining Company, Limited Liability—all shareholders deriving the same benefit.

The only shares now being sold are for Company purposes, acquiring properties and development work.

Proceeds go into the hands of a reliable trustee, (Manager of Bank of British North America, Rossland,) for the Treasury.



## INFORMATION.

The following are extracts from the official report, made last August, by Mr. William A. Carlyle, Provincial Mineralogist for the province of British Columbia:

"The Trail Creek Mining District is located in the southern part of West Kootenay, on both sides of the Columbia River, and along the International Boundary Line between Canada and the United States."

"Rossland, the chief mining centre, has grown very rapidly to a town of about 4,000 people, and is supplied with good hotels, two banks—the Bank of Montreal and the Bank of British North America—"

"The discovery, during the last two or three years, of large bodies of high grade gold ores, in which dividend-paying mines are now being operated, is attracting the earnest attention of many mining men and capitalists of both America and Europe. The opening up of the large mines at Rossland that, notwithstanding many heavy disadvantages—rapidly being overcome, such as means and cost of transportation—have proved very remunerative, and, as more extensive exploratory work and greater depth are attained, promise permanency of large and profitable ore bodies, is stimulating more thorough prospecting not only around Rossland, but in many other localities in this district, with the result that other camps are quickly coming to the front, as good prospects on being worked disclose ore of increasing value."

"The consensus of opinion of many mining men who have studied the conditions and surface showings in this new camp at Rossland, is to the effect that few camps have ever shown so many favorable indications that warrant the belief that on further extensive, systematic exploration other shutes of gold ore will be uncovered. Prospecting has disclosed these many parallel veins, varying in width, when exposed, from an inch to several feet, and it is believed that many more ore shutes will be found when these most promising surface indications are thoroughly exploited, for it is quite improbable that the large shutes of rich ore that have been shown on the surface by denudation will be found to be the only ones."

J. A. Kirk, P. L. S., in his history of the Trail Creek Mines, written early in 1896, writes:

"At the beginning of 1895, War Eagle Stock had cost the holders about 17 cents a share. In less than a year the mine yielded a profit of over \$350,000.00. The history of the pioneer claims which have attracted the attention of the world to the Camp, has now been briefly related. Much might be written respecting the wonderful discoveries that have been made on other claims. It must suffice here to state that many of them have been bonded for large sums, varying from \$20,000.00 to \$75,000.00 and over."

"Machinery is in operation in the Le Roi, War Eagle, Nickle Plate, Centre Star, O. K. and R. E. Lee. The Josie, Cliff and Columbia & Kootenay claims will soon be fully equipped with plant already purchased, while owners of many other properties, including the Homestake, Crown Point and Morning Star, are prepared to put in machinery as soon as development has proceeded far enough to enable it to be used to advantage."

"It is almost incredible that it is only a few months since the first Le Roi dividend was declared; that ten per cent. monthly dividends upon a capitalization of \$500,000.00 began to attract attention to the War Eagle; that Rossland was only a ranch with a few cabins; while to-day it has an estimated population of 3,000 people, with first class hotels, a perfect system of water supply, and is lit by electricity; lastly, that capital has become so convinced of the permanency of the camp as a field for investment that a 250 ton smelter has been completed to reduce its ores."

Since the writing of the above paragraphs, the population of Rossland has increased with great rapidity. A conservative estimate of the people there to-day would be six thousand, while the number of mines shipping ore has been doubled, as well as the number of mines which are being equipped with machinery.

Mining experts who have visited South Africa, Australia, and the United States, after thorough examination, have declared that the Trail Creek Mining District is one of the richest mineral belts in the world.

C. W. Callahan, M.E., of London, England, in speaking of the Trail Creek mining camp before a meeting in Spokane of the Northwest Mining Association, made use of the following significant language:

"It has been my privilege to visit the different mining countries of the world, and I have had a little experience in trying to tickle mother earth into releasing some of her treasures. Everywhere am I reminded of that Irishman who said, when asked what kind of gold he had found: 'Bedad, its the gold that is good enough, but there's too much dirt in.' What I have seen of this Northwest, I think there is less dirt in your gold than anywhere I know of, requiring only capital, energy and perseverance to make your country the foremost gold producer in the world. Johannesburg, with its princely output of two thousand ounces per month, is only twelve miles in length, six miles in width by three deep. The country would never amount to anything, because the ore was too low grade. Capital said no, the value was in it. They buckled to it, sought and found the cyanide man, and he came along and brought from that the foremost gold-producing mines in the world."

"The Australian ore is low grade, but they have a great amount of enterprise and a great amount of capital, and they are to-day facing a proposition to lift water 2,500 feet and bring it over a desert country 225 miles."

"I must say that your Canadian people are discouragingly timid about investing your money, and are the only people in the world who do not realize the possession of the widest zone and the richest mineral on the face of the earth. It seems to me that when old mother earth was distributing her minerals she encountered western hospitality, and with the same lavish hand dispersed her richest gifts in this region."

# The Alf Gold Mining Company,

Limited Liability.

Incorporated Under the Laws of  
British Columbia.

CAPITALIZATION  
**\$1,000,000.00.**

Any further information may be had on  
application to

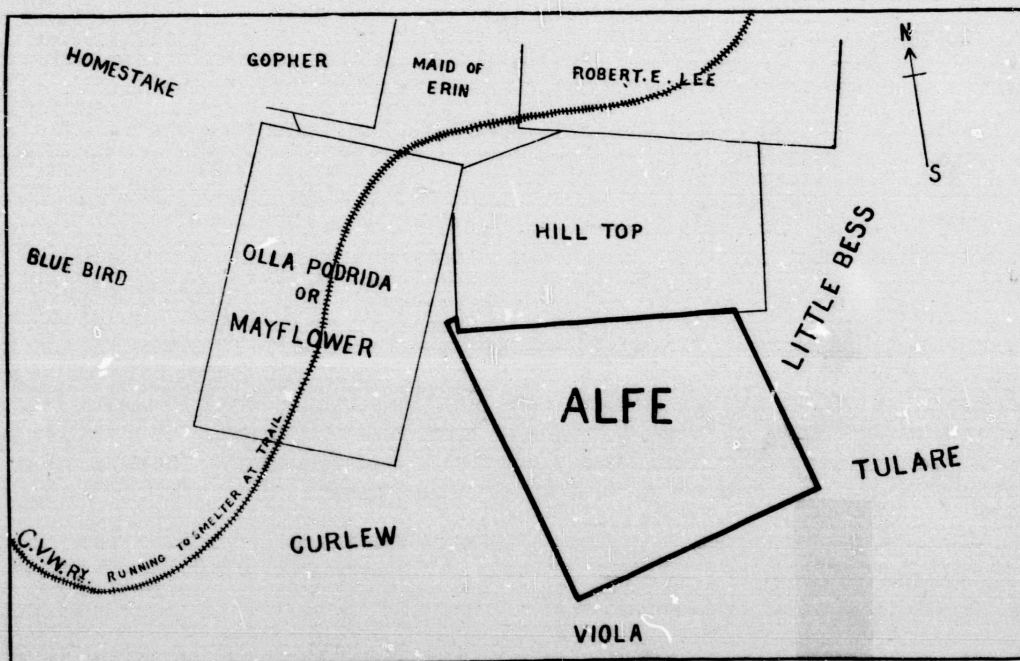
**COLTHARD & CO.**

MINING BROKERS,

28 Victoria Street,

Telephone 640.

TORONTO.



MAP SHOWING "ALFE" PROPERTY, AS SURVEYED BY CHAS. A. ELLICOT, P. L. S., ROSSLAND.

64

853518C

**The Alf Gold Mining Company,**



