

## Technical and Bibliographic Notes / Notes techniques et bibliographiques

Canadiana.org has attempted to obtain the best copy available for scanning. Features of this copy which may be bibliographically unique, which may alter any of the images in the reproduction, or which may significantly change the usual method of scanning are checked below.

Canadiana.org a numérisé le meilleur exemplaire qu'il lui a été possible de se procurer. Les détails de cet exemplaire qui sont peut-être uniques du point de vue bibliographique, qui peuvent modifier une image reproduite, ou qui peuvent exiger une modification dans la méthode normale de numérisation sont indiqués ci-dessous.

- Coloured covers /  
Couverture de couleur
- Covers damaged /  
Couverture endommagée
- Covers restored and/or laminated /  
Couverture restaurée et/ou pelliculée
- Cover title missing /  
Le titre de couverture manque
- Coloured maps /  
Cartes géographiques en couleur
- Coloured ink (i.e. other than blue or black) /  
Encre de couleur (i.e. autre que bleue ou noire)
- Coloured plates and/or illustrations /  
Planches et/ou illustrations en couleur
- Bound with other material /  
Relié avec d'autres documents
- Only edition available /  
Seule édition disponible
- Tight binding may cause shadows or distortion  
along interior margin / La reliure serrée peut  
causer de l'ombre ou de la distorsion le long de la  
marge intérieure.
- Additional comments /  
Commentaires supplémentaires:

Continuous pagination.

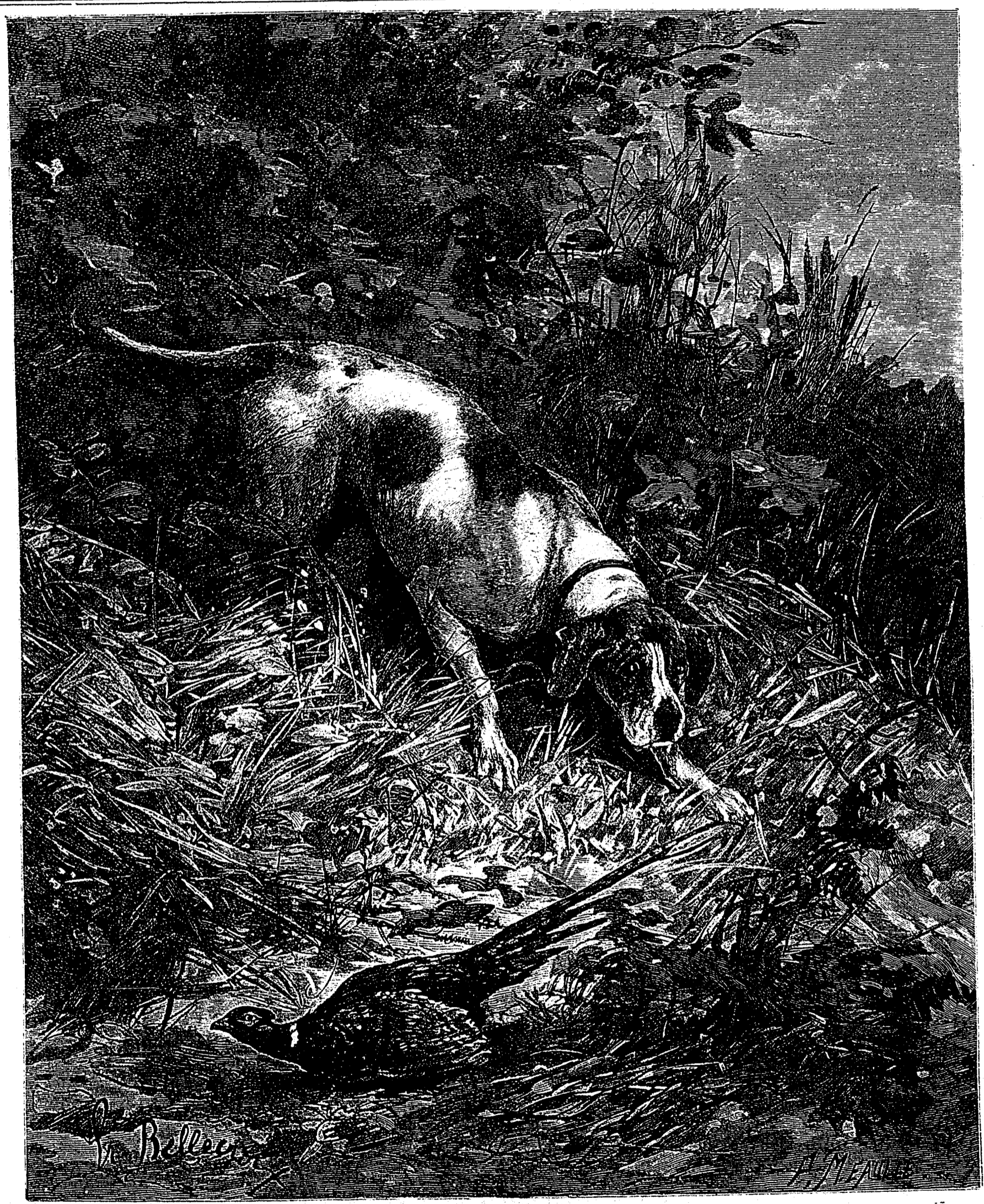
- Coloured pages / Pages de couleur
- Pages damaged / Pages endommagées
- Pages restored and/or laminated /  
Pages restaurées et/ou pelliculées
- Pages discoloured, stained or foxed/  
Pages décolorées, tachetées ou piquées
- Pages detached / Pages détachées
- Showthrough / Transparence
- Quality of print varies /  
Qualité inégale de l'impression
- Includes supplementary materials /  
Comprend du matériel supplémentaire
- Blank leaves added during restorations may  
appear within the text. Whenever possible, these  
have been omitted from scanning / Il se peut que  
certaines pages blanches ajoutées lors d'une  
restauration apparaissent dans le texte, mais,  
lorsque cela était possible, ces pages n'ont pas  
été numérisées.

# CANADIAN ILLUSTRATED NEWS

Vol. XXVIII.—No. 15.

MONTREAL, SATURDAY, OCTOBER 13, 1883.

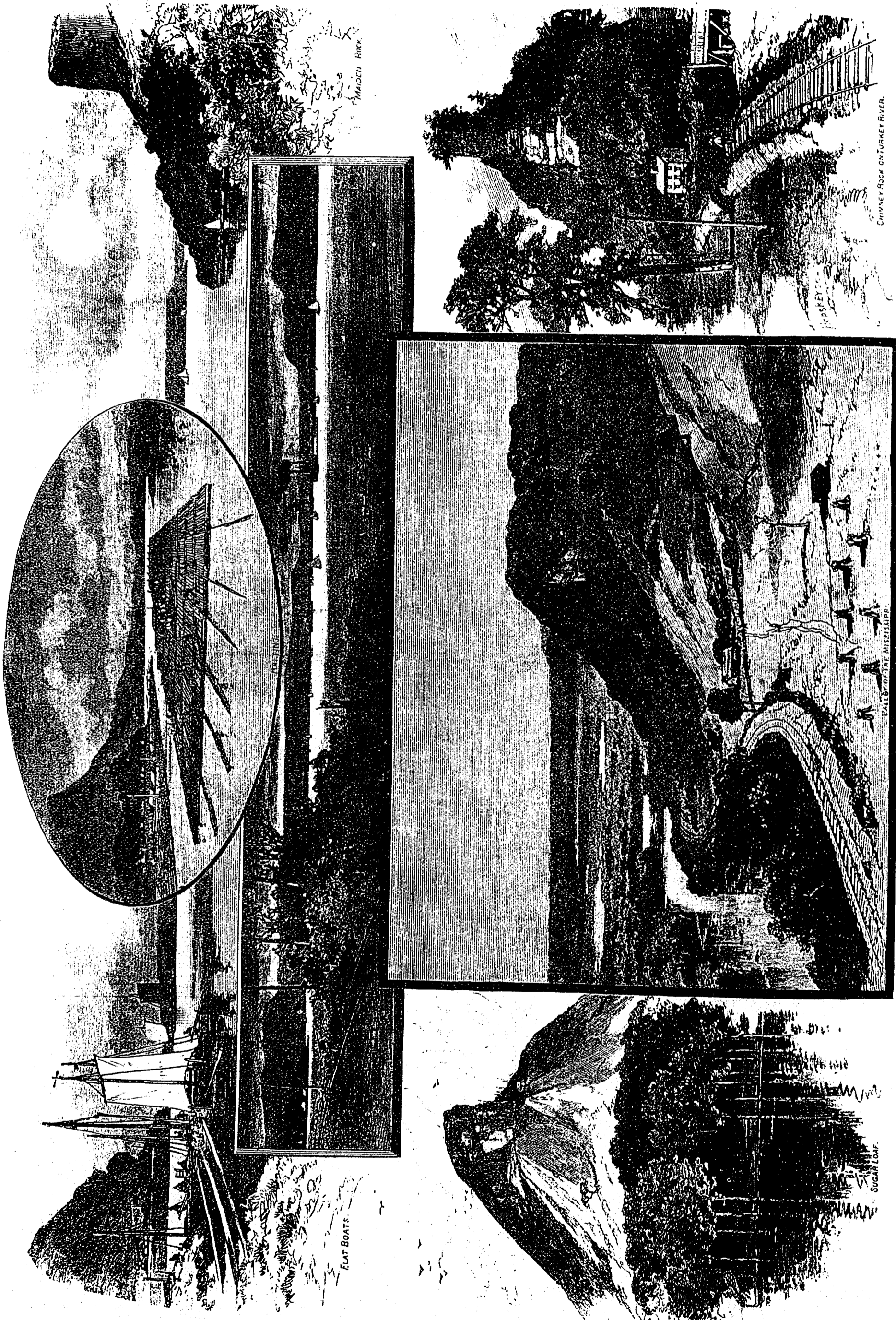
{ SINGLE COPIES, TEN CENTS.  
{ \$4 PER YEAR IN ADVANCE.



POINTING.







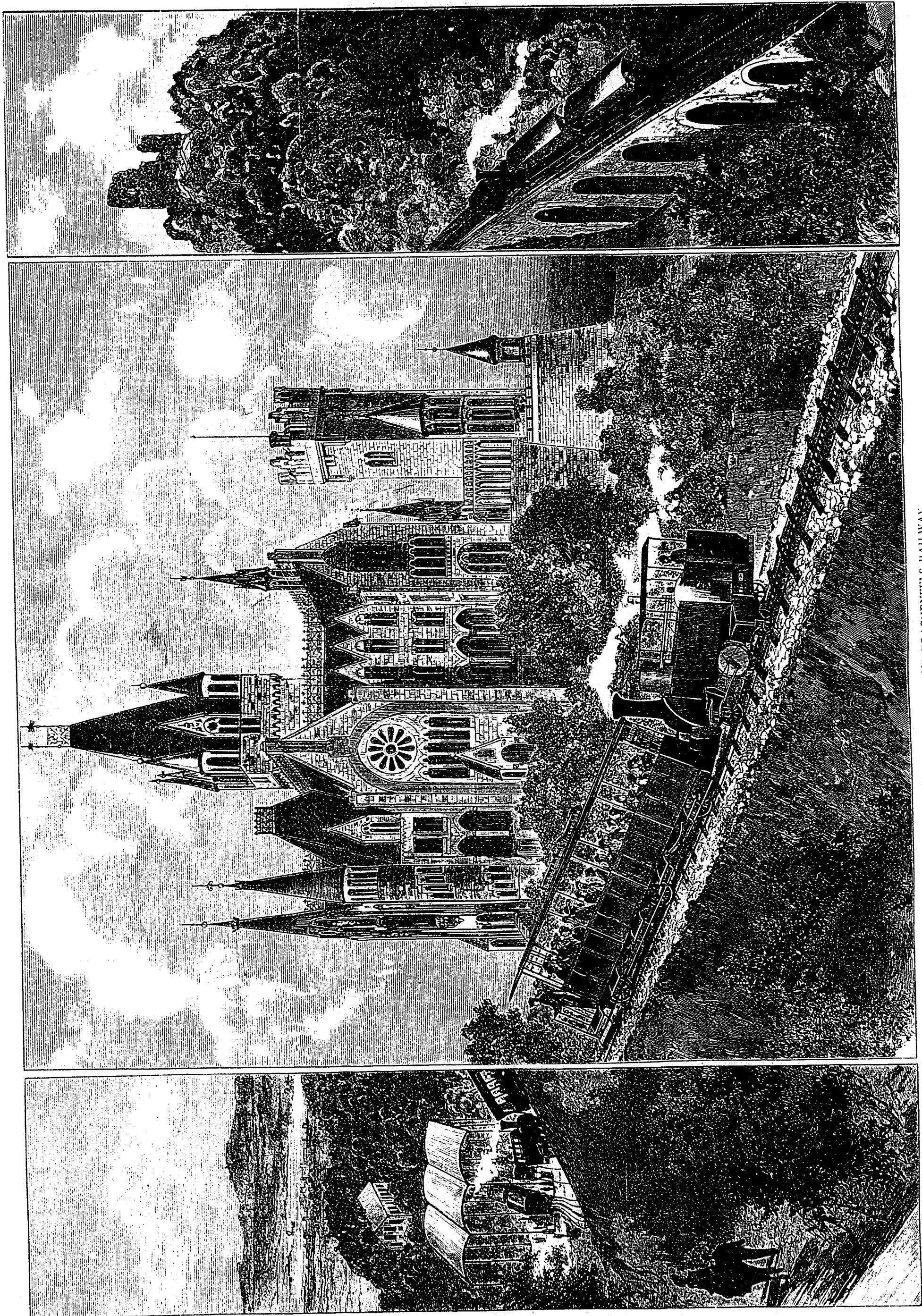
FLAT BOATS.

MAJESTIC RIVER.

SUGAR LOAF.

CHIMNEY ASK ON TURKEY RIVER.

THE VALLEY OF THE UPPER MISSISSIPPI.



THE DRACHENBURG AND DRACHENFELS RAILWAY.

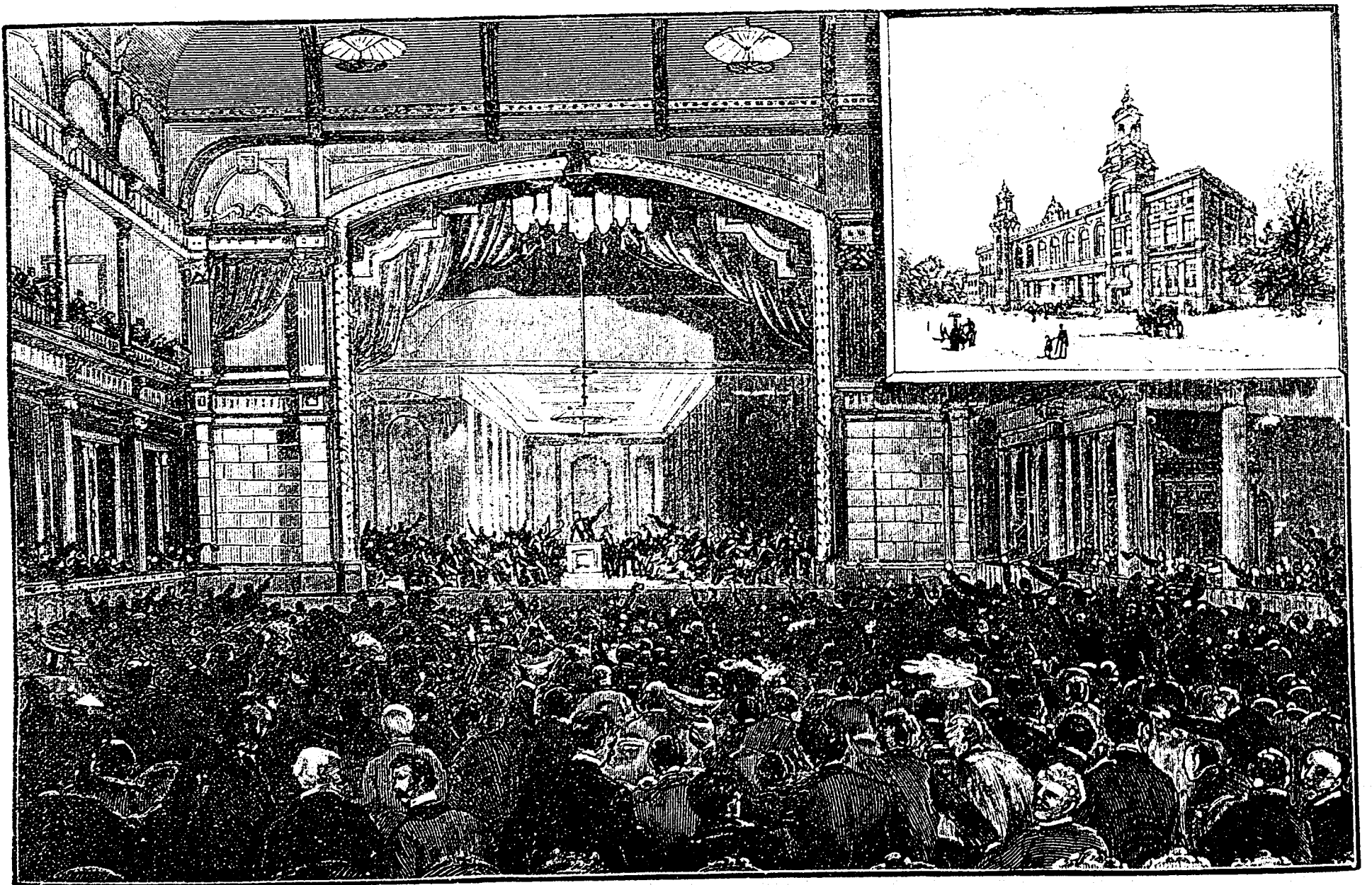




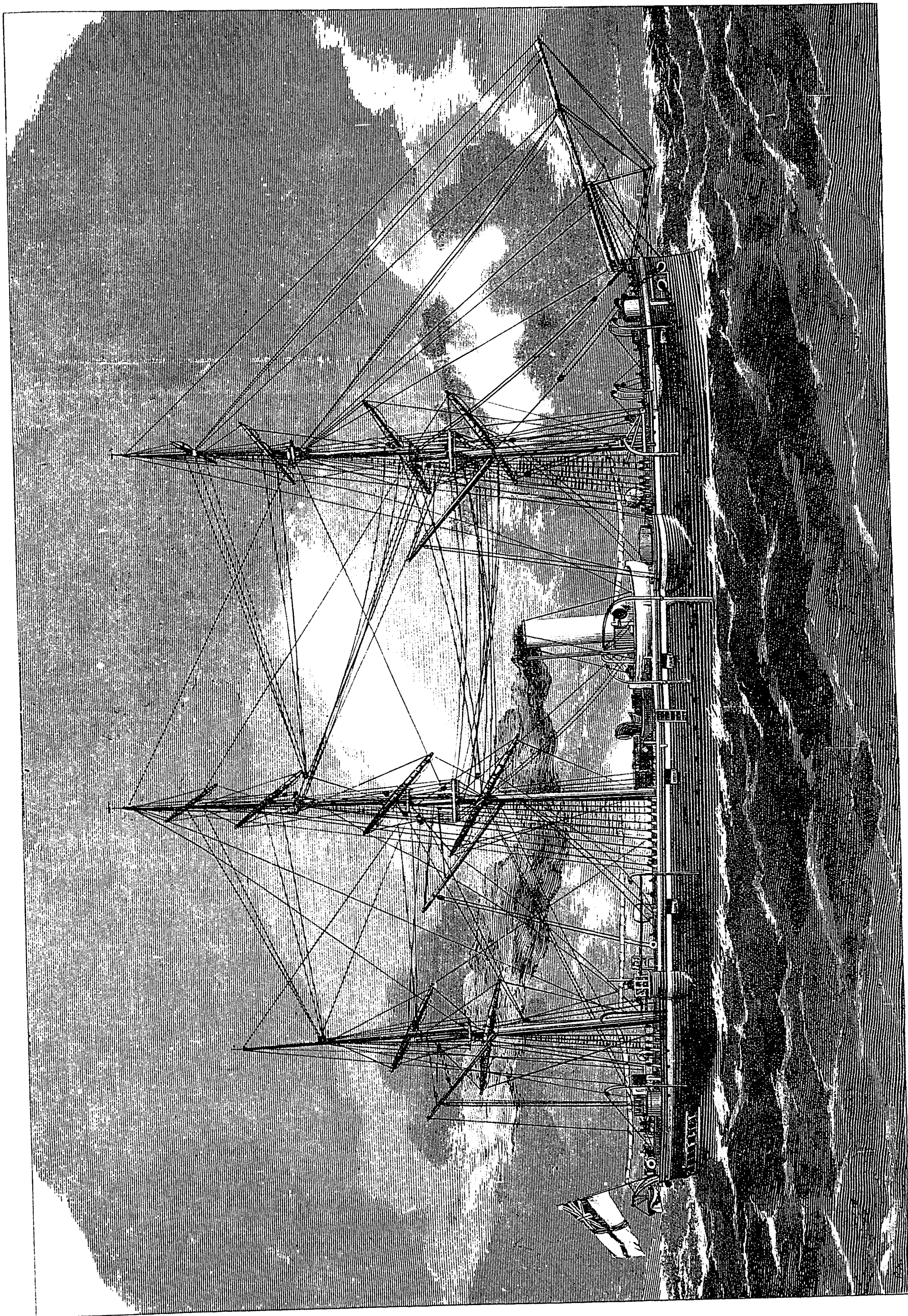




HIS ROYAL HIGHNESS PRINCE GEORGE OF WALES.



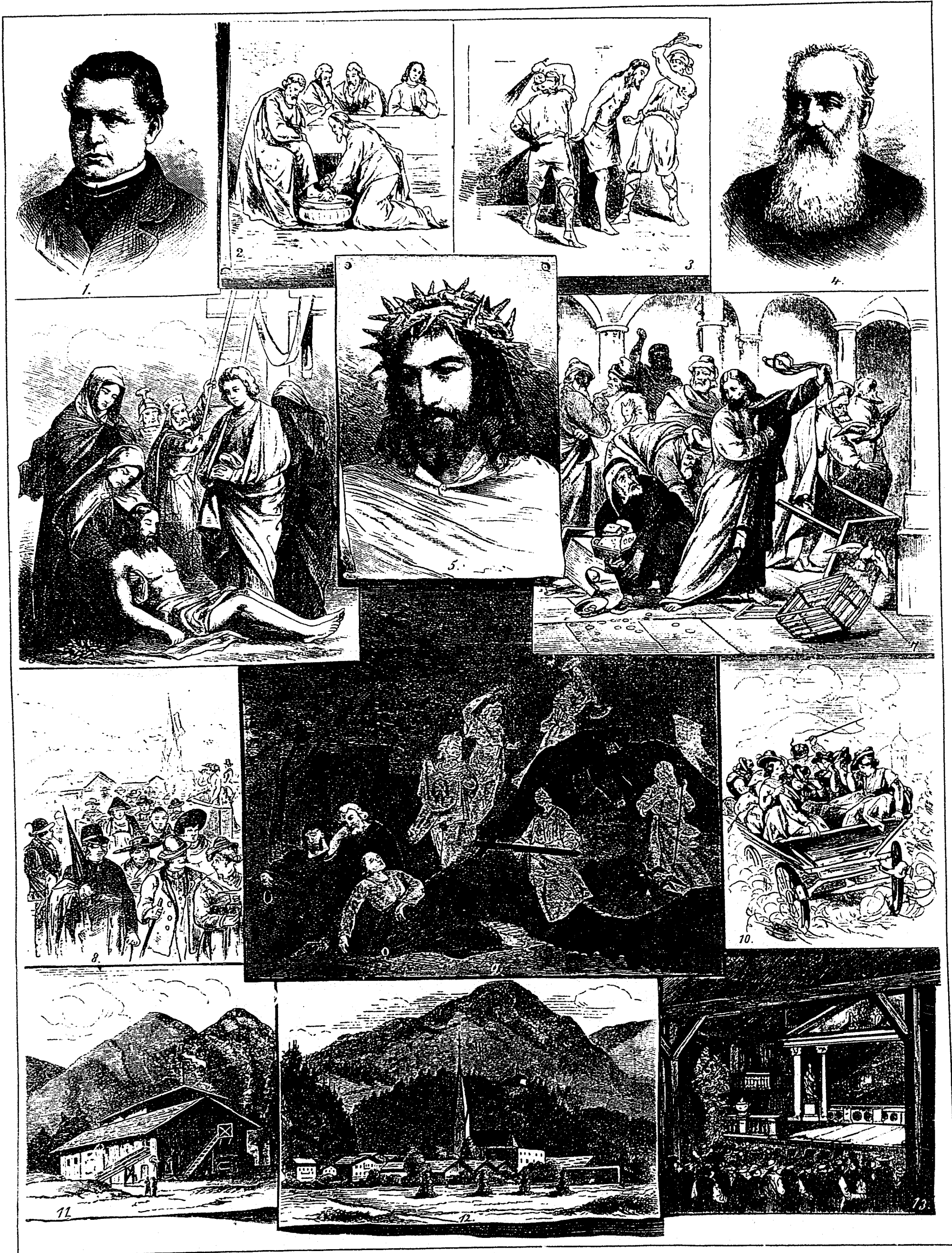
THE NEW YORK DEMOCRATIC CONVENTION AT BUFFALO.



U. S. STEAM CORVETTE *THE CANADA*.







1.—Vicar Jos. Barelli.

2, 3, 6, 7 and 9.—Scenes from the play.

4.—Prof. Stolz, Manager.

5.—Anton Huber.

8 and 10.—Homeward.

11 and 13.—Exterior and Interior of the Theatre.

12.—View of Brixlegg.

THE PASSION PLAY AT BRIXLEGG.



Dincrah

Troubadour  
(Zigeunerin)

Fra Diavolo

Carmen

Marguerite

Postillon v. Jonglueren

Wilhelm Tell

Alessandro Stradella  
(Die beiden Banditen)

Gzar u. Zimmermann  
(Bürgermeister)

OPERATIC SILHOUETTES.







40 CARDS all lap-corner, Gilt Edge, Glass, Motto and Chromo, Lower Letter and Case name in gold and jet, 10c. WEST & CO., WESTVILLE, CONN

(Under the Direct Patronage of H. M. Government.)



JOHNSTON'S FLUID BEEF

has been pronounced by leading scientists and physicians everywhere to be the most perfect form of concentrating nourishment at present known.

It is rapidly superseding Tea and Coffee in the colder European countries, and is served hot on draught in the fashionable Saloons and Restaurants.

As a Winter Beverage it is simply perfection, supplying heat in its natural state; stimulant in a thoroughly innocuous form; concentrated nourishment, rendering languid reaction impossible; and, above all, furnishing tone to the nerves, and substantial food for brain, bone and muscle.



THE "SKREI" Cod Liver Oil.

Pure, Pale and almost tasteless. No other Oil to compare with it

KENNETH CAMPBELL & CO.



THE BURLAND LITHOGRAPHIC COMPANY

(LIMITED)

CAPITAL \$200,000,

GENERAL

Engravers, Lithographers, Printers

AND PUBLISHERS,

3, 5, 7, 9 & 11 BLEURY STREET, MONTREAL.

THIS ESTABLISHMENT has a capital equal to all the other Lithographic firms in the country, and is the largest and most complete Establishment of the kind in the Dominion of Canada, possessing all the latest improvements in machinery and appliances, comprising:—

- 12 POWER PRESSES
2 PATENT ENVELOPE MACHINES, which make, print and emboss envelopes by one operation.
1 PATENT LABEL GLOSSING MACHINE.
1 STEAM POWER ELECTRIC MACHINE,
4 PHOTOGRAPHING MACHINES,
2 PHOTO-ENGRAVING MACHINES,
Also CUTTING, PERFORATING, NUMBERING, EMBOSING, COPPER PLATE PRINTING and all other Machinery required in a first class business.

All kinds of ENGRAVING, LITHOGRAPHING, ELECTROTYPING AND TYPE PRINTING executed in the BEST STYLE AND AT MODERATE PRICES.

PHOTO-ENGRAVING and LITHOGRAPHING from pen and ink drawings a SPECIALTY.

The Company are also Proprietors and Publishers of the CANADIAN ILLUSTRATED NEWS, L'OPINION PUBLIQUE, and SCIENTIFIC CANADIAN.

A large staff of Artists, Engravers, and Skilled Workmen in every Department.

Orders by mail attended to with Punctuality; and prices the same as if given personally.

G. B. BURLAND, MANAGER.

THIS PAPER MAY BE FOUND ON FILE AT GEO. P. ROWELL & CO'S Newspaper Advertising Bureau (10 SPRUCE STREET), WHERE ADVERTISING CONTRACTS MAY be made for it in NEW YORK.

CANVASSERS WANTED. — To solicit subscriptions and advertisements for the CANADIAN MAGAZINE OF SCIENCE AND THE INDUSTRIAL ARTS, to whom liberal commissions will be paid. Intelligent young women would find this agreeable and profitable employment.

Address, G. B. BURLAND, 5 & 7 Bleury Street, Montreal.



THE LATE IVAN TURGENIEFF, RUSSIAN NOVELIST.

LEA & PERRINS' SAUCE



In consequence of Imitations of THE WORCESTERSHIRE SAUCE which are calculated to deceive the Public, Lea and Perrins have to request that Purchasers see that the Label on every bottle bears their Signature thus—

Lea & Perrins

without which no bottle of the original WORCESTERSHIRE SAUCE is genuine.

Ask for LEA and PERRINS' Sauce, and see Name on Wrapper, Label, Bottle and Stopper. Wholesale and for Export by the Proprietors, Worcester; Cross and Blackwell, London, &c., &c.; and by Grocers and Oilmen throughout the World.

To be obtained of MESSRS. J. M. DOUGLASS & CO., MONTREAL; MESSRS. URQUHART & CO., MONTREAL.

LIEBIG COMPANY'S



EXTRACT OF MEAT

FINEST AND CHEAPEST MEAT-FLAVOURING STOCK FOR SOUPS, MADE DISHES & SAUCES.

An invaluable and palatable tonic in all cases of weak digestion and debility. CAUTION.—Genuine ONLY with fac-simile of Baron Liebig's Signature in Blue Ink across Label. This Caution is necessary, owing to various cheap and inferior substitutes being in the Market.

STEPHENS & LIGHTHALL,

Advocates, Attorneys and Commissioners, 341 1/2 NOTRE DAME STREET, (Opposite Exchange Bank).

C. H. STEPHENS, B.C.L. | W. DOW LIGHTHALL, B.A., B.C.L.

CASTOR FLUID (Registered)

A delightfully refreshing preparation for the hair. Should be used daily. Keeps the scalp healthy, prevents dandruff, promotes the growth. A perfect hair dressing for the family. 25c. per bottle.

HENRY R. GRAY, Chemist, Sole Manufacturer, 144 St. Lawrence Main Street.

BELLAMY'S

Healing Samaritan Ointment

HAS CURED

Salt Rheum for T. J. Claxton, of Montreal. Ringworm for J. M. Watson, of Morrisburg. Barber's Itch for W. H. Jackson, of Toronto. Scalp Itchings and Dandruff for Rev. T. Pickett, of Brockville.

Use for all kinds of skin diseases and sores. Price 25 and 50c. per box. Sold by all first-class wholesale and retail druggists in Canada.

H. H. BELLAMY, Proprietor, BROCKVILLE, Ont.

British American BANK NOTE COMPANY,

MONTREAL.

Incorporated by Letters Patent.

Capital \$100,000.

General Engravers & Printers

Bank Notes, Bonds, Postage, Bill & Law Stamps, Revenue Stamps,

Bills of Exchange, DRAFTS, DEPOSIT RECEIPTS, Promissory Notes, &c., &c.,

Executed in the Best Style of Steel Plate Engraving.

Portraits a Specialty.

G. B. BURLAND,

President & Manager

Canadian Magazine

OF

Science and the Industrial Arts.

PATENT OFFICE RECORD.

EDITOR—HENRY T. BOVEY, M.A. (Camb.), Associate Memb. Inst. C.E.; Memb. of Inst. M.E. (Eng.) and American Inst. M.E., Professor of Civil Engineering and App. Mechs., McGill University.

Every effort will be made to render the publication a useful vehicle for the conveying of information respecting the latest progress in Science and the Arts.

It is hoped that the MAGAZINE will also be a medium for the discussion of questions bearing upon Engineering in its various branches, Architecture, the Natural Sciences, etc., and the Editor will gladly receive communications on these and all kindred subjects. Any illustrations accompanying such papers as may be inserted will be reproduced with the utmost care.

A space will be reserved for Notices and Reviews of New Books, and Resumes will be given of the Transactions of various Engineering and Scientific Societies.

The PATENT OFFICE RECORD will continue to be a special feature of the Magazine; and will be published as an Appendix to each number. The Illustrations, however, will be considerably enlarged, so that each invention being more easy to examine will be made clearer and more intelligible to the general reader. This RECORD gives information of the greatest value to engineers, manufacturers, and to all persons interested in the different trades.

In view of these great improvements the subscription price will be \$2.50 payable in advance, and it is confidently anticipated that a large increase will be made in the number of subscribers.

The efficiency and success of the Magazine, the only one of the kind in Canada, must in a great measure, depend upon the hearty co-operation and support of the Public.

NOTE.—All communications relating to the Editorial department should be addressed to the Editor, 31 McTavish St., Montreal.

All business communications, subscriptions, and payments to be addressed G. B. BURLAND, Manager, BURLAND LITHOGRAPHIC CO., 5 & 7 Bleury St., Montreal.

Advertising rates will be given on application to the Office of the Company.

Agents Wanted in every Town and City in the Dominion to solicit Subscriptions and Advertisements, for which liberal commissions will be paid.