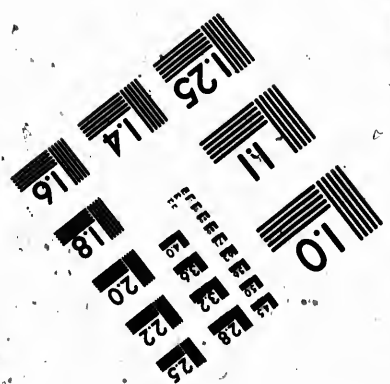
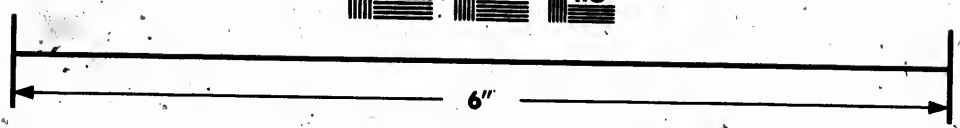
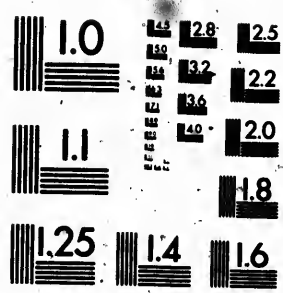


**IMAGE EVALUATION.  
TEST TARGET (MT-3)**



**Photographic  
Sciences  
Corporation**

23 WEST MAIN STREET  
WEBSTER, N.Y. 14580  
(716) 872-4503

25  
22

**CIHM  
Microfiche  
Series  
(Monographs)**

**ICMH  
Collection de  
microfiches  
(monographies)**



**Canadian Institute for Historical Microreproductions / Institut canadien de microreproductions historiques**

**© 1991**

Technical and Bibliographic Notes / Notes techniques et bibliographiques

The Institute has attempted to obtain the best original copy available for filming. Features of this copy which may be bibliographically unique, which may alter any of the images in the reproduction, or which may significantly change the usual method of filming, are checked below.

L'Institut a microfilmé le meilleur exemplaire qu'il lui a été possible de se procurer. Les détails de cet exemplaire qui sont peut-être uniques de point de vue bibliographique, qui peuvent modifier une image reproduite, ou qui peuvent exiger une modification dans la méthode normale de filmage sont indiqués ci-dessous.

- Coloured covers/  
Couverture de couleur
- Covers damaged/  
Couverture endommagée
- Covers restored and/or laminated/  
Couverture restaurée et/ou pelliculée
- Cover title missing/  
Le titre de couverture manque
- Coloured maps/  
Cartes géographiques en couleur
- Coloured ink (i.e. other than blue or black)/  
Encre de couleur (i.e. autre que bleue ou noire)
- Coloured plates and/or illustrations/  
Planches et/ou illustrations en couleur
- Bound with other material/  
Relié avec d'autres documents
- Tight binding may cause shadows or distortion  
along interior margin/  
La reliure serrée peut causer de l'ombre ou de la  
distorsion le long de la marge intérieure
- Blank leaves added during restoration may appear  
within the text. Whenever possible, these have  
been omitted from filming/  
Il se peut que certaines pages blanches ajoutées  
lors d'une restauration apparaissent dans le texte,  
mais, lorsque cela était possible, ces pages n'ont  
pas été filmées.

- Coloured pages/  
Pages de couleur
- Pages damaged/  
Pages endommagées
- Pages restored and/or laminated/  
Pages restaurées et/ou pelliculées
- Pages discoloured, stained or foxed/  
Pages décolorées, tachetées ou piquées
- Pages detached/  
Pages détachées
- Showthrough/  
Transparence
- Quality of print varies/  
Qualité inégale de l'impression
- Continuous pagination/  
Pagination continue

- Includes index(es)/  
Comprend un (des) index

Title on header taken from: /  
Le titre de l'en-tête provient:

- Title page of issue/  
Page de titre de la livraison
- Caption of issue/  
Titre de départ de la livraison
- Masthead/  
Générique (périodiques) de la livraison

- Additional comments: /  
Commentaires supplémentaires:

This item is filmed at the reduction ratio checked below/  
Ce document est filmé au taux de réduction indiqué ci-dessous.

10X	14X	18X	22X	26X	30X
<input type="checkbox"/>	<input type="checkbox"/>	<input type="checkbox"/>	<input type="checkbox"/>	<input type="checkbox"/>	<input checked="" type="checkbox"/>
12X	16X	20X	24X	28X	32X

The copy filmed here has been reproduced thanks to the generosity of:

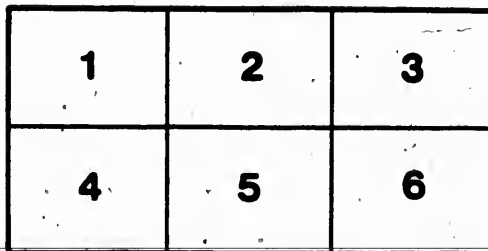
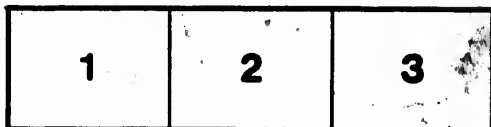
Library of the National Archives of Canada

The images appearing here are the best quality possible considering the condition and legibility of the original copy and in keeping with the filming contract specifications.

Original copies in printed paper covers are filmed beginning with the front cover and ending on the last page with a printed or illustrated impression, or the back cover when appropriate. All other original copies are filmed beginning on the first page with a printed or illustrated impression, and ending on the last page with a printed or illustrated impression.

The last recorded frame on each microfiche shall contain the symbol → (meaning "CONTINUED"), or the symbol ∇ (meaning "END"), whichever applies.

Maps, plates, charts, etc., may be filmed at different reduction ratios. Those too large to be entirely included in one exposure are filmed beginning in the upper left hand corner, left to right and top to bottom, as many frames as required. The following diagrams illustrate the method:



L'exemplaire filmé fut reproduit grâce à la générosité de:

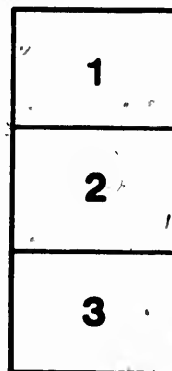
La bibliothèque des Archives nationales du Canada

Les images suivantes ont été reproduites avec le plus grand soin, compte tenu de la condition et de la netteté de l'exemplaire filmé, et en conformité avec les conditions du contrat de filmage.

Les exemplaires originaux dont la couverture en papier est imprimée sont filmés en commençant par le premier plat et en terminant soit par la dernière page qui comporte une empreinte d'impression ou d'illustration, soit par le second plat, selon le cas. Tous les autres exemplaires originaux sont filmés en commençant par la première page qui comporte une empreinte d'impression ou d'illustration et en terminant par la dernière page qui comporte une telle empreinte.

Un des symboles suivants apparaîtra sur la dernière image de chaque microfiche, selon le cas: le symbole → signifie "A SUIVRE", le symbole ∇ signifie "FIN".

Les cartes, planches, tableaux, etc., peuvent être filmés à des taux de réduction différents. Lorsque le document est trop grand pour être reproduit en un seul cliché, il est filmé à partir de l'angle supérieur gauche, de gauche à droite, et de haut en bas, en prenant le nombre d'images nécessaire. Les diagrammes suivants illustrent la méthode.



# Canadian Pacific Railway Co.

## SPECIFICATION

FOR

## STANDARD LOCOMOTIVE.

Eight Wheel Freight Engine, having Four Coupled Driving Wheels, with Four-Wheel Engine Truck, Tender carried on Eight Wheels.

### GENERAL DESCRIPTION.

Cylinder 17 inches diameter, 24 inches stroke.  
Gauge of track, 4 ft. 8½ in.  
Driving wheels with tire, 62 in. diameter outside.  
Driving wheel centres, 56 in. diameter.  
Driving axles (steel), 7 in. diameter, finished.  
Driving wheel base, 8 ft. 6 in.  
Total wheel base, 23 ft. 1½ in.  
Centre of driving axle to centre of cylinder, 11 ft. 9½ in.  
Weight on driving wheels, about 48,000 lbs.  
Total weight of locomotive in working order, about 74,000 lbs.  
Level top boiler.

### BOILER.

Made of steel. Cylinder part of boiler, ⅝ in. thick. Side sheets ⅝ in. thick. Throat and head sheets, ⅜ in. thick. Saddle Sheet, ½ in. thick. Dome sheet, ½ in. thick. All vertical joints to be single rivetted. All horizontal joints to be double rivetted with welts 7½ in. wide by ⅝ in. thick outside and inside. Caulking done with round pointed tools. Boiler to be stayed thoroughly in all its parts, provided with cleaning holes and hand-hole plugs of brass, one of 2 in. diameter at each corner of water leg, one in bottom of cylinder part of boiler about centre of forward sheet, also two cleaning holes on each side of boiler on the saddle sheet above level of crown sheet. These holes to be formed by attaching a brass counterflange to saddle sheet, having a 3¼ in. brass plug in it. Six 2¼ in. brass plugs to be placed in smoke box flue sheet and distributed thus, two over tubes, two at sides, and two at bottom below tubes. Three 2 in. brass plugs to be provided in head sheet above level of crown sheet.

### SHELL.

Shell of boiler 52¼ in. outside diameter at fire-box end. Made level top, with one dome 27½ in. inside diameter by 2 ft. 9 in. high, and placed on middle course of boiler. Dome cover to be provided with one whistle.

### FIRE-BOX.

Made of steel, 5 ft. 11½ in. long by 2 ft. 11 in. wide inside. Side and back sheets ⅝ in. thick. Water space on sides and back 3 in., on front 3¼ in. Crown sheet ⅝ in. thick. Flue sheet, ½ in. thick. Stay bolts, best quality (Low Moor, Bowling Sligo, or Globe) iron, ⅞ in. diameter, screwed through both sheets and rivetted to sheets both ends. Distance from centre to centre of stay bolts not to exceed 4¼ in., and not more than 17 sq. in. area between four stays. To have 17 in. space from top of box to inside saddle plate.

**SMOKE-BOX.**

To be 4 ft. 6 $\frac{1}{2}$  in. diameter outside.

**CROWN STAYS.**

Crown sheet to be supported by direct vertical screwed stays, 4 in. from centre to centre. Stays to be 1 $\frac{1}{2}$  in. diameter, having eleven threads to one inch. Saddle sheet and crown sheet to be tapped through with same tap to receive stay. Stays are to be made a steam-tight fit, and a projection of  $\frac{1}{8}$  in. inside the crown sheet and outside the saddle sheet is to be left for riveting over.

**POP VALVES.**

To be placed on dome cover. To be Crosby pattern. (See drawing.)

**GUSSET STAYS.**

The head sheets are to be stayed to cylinder part of the boiler by gusset stays. Two gusset stays required for front tube sheet, and four for back head sheet.

**TUBES.**

Of wrought iron, 1 $\frac{1}{2}$  in. diameter outside, with copper ferrules on fire-box end, 184 in number, 11 ft. 9 $\frac{3}{8}$  in. long, lap welded, charcoal iron, special No. 12 tubes.

Boiler to be tested under steam to the satisfaction of the Mechanical Superintendent of the Company, or whoever he may appoint to inspect it.

**GRATES.**

Of cast iron. Rocking finger for burning coal connected so as to be opened from deck of engine in cab sufficiently wide to drop or clean fire. (See drawing.) Ash-pan with forward and back dampers arranged to be operated from the deck of engine, and fitted to close tight.

**SMOKE STACK.**

To be made diamond-pattern, with cast iron top. (See drawing.) Cone of chilled cast iron corrugated. Barrel of stack No. 10 steel. Top of stack from top of rail 14 ft. 6 in. Base of cast iron in two parts. (See drawing.)

**THROTTLE VALVE.**

Balance valve made of cast iron.

**CYLINDERS.**

Kington pattern. Centre of Cylinder to centre of Boiler, 3 ft. 6 $\frac{1}{2}$  ins.

**PISTONS AND RODS.**

Piston head, follower, and rings to be made of cast iron, steam packing. Rods to be made of steel, 2 $\frac{3}{4}$  in. diameter, screwed into piston head and secured by screwed plug in threads. (See drawing.) To be keyed to crosshead with steel key.

Glands to be fitted with metallic packing from United States Metallic Packing Co.

**GUIDES AND CROSSHEADS.**

Made of steel. (See drawing.)

**VALVE MOTION.**

Shifting link graduated to cut off equally at all points of stroke. Links to be made of best hammered iron, double thimble and case-hardened. Reverse shaft of wrought iron, forged solid. Litters and other parts of valve motion having bearings to be double thimble, and all wearing parts, including pins, to be case-hardened.

**ROCKER ARM.**

Made of wrought iron.

**DRIVING WHEELS.**

Driving wheel centres to be made of cast iron with hollow spokes, turned outside on face, 56 inches diameter, edges faced and properly counterbalanced.

### **TYRES.**

Of Krupp crucible steel, flanged. For driving wheels, 3 in. thick by 5½ in. wide, finished. For truck wheels, 2½ in. thick by 5 in. wide, finished.

### **TRUCK WHEELS.**

Engine truck wheels, 28 in. diameter; centres, 23 in. diameter.

### **AXLES.**

All axles to be made of steel. Driving axles to finish 7 in. diameter, journals 7 in. diameter by 8 in. long. Engine truck axle journals to finish 5 in. diameter by 8½ in. long, wheel fit 5 in. diameter, distance between hubs of wheels, 52 inches. Cast iron clamp collars on each axle.

### **CRANK PINS.**

Pins to be made of wrought iron (see drawing), case-hardened, and ground up true and accurate.

### **CONNECTING AND SIDE RODS AND STRAPS.**

Made from best hammered iron forged from No. 1 scrap, solid. See drawing.

### **DRIVING BOX.**

Made of cast iron, and bushes pressed in. See drawing.

### **FRAMES.**

Made of best hammered iron forged in two sections, each section being solid, and firmly bolted together and keyed forward of forward driving box pedestal. Pedestal jaws fitted with cast iron thimbles at bottom, secured with one 1½ in. bolt passing through jaws and thimble with jam nuts. Pedestal jaws eased with cast iron shoes and wedges.

### **ENGINE TRUCK.**

See drawing. Swing beam.

### **FEED WATER.**

Boiler supplied with water by two Gresham non-lifting injectors, class W. F., one No. 8, placed on right hand side of engine, and one No. 7 on left hand side, with feed cocks coupled on bottom of injectors. The supply pipes to have intermediate checks and pet cocks. Injector throttles in cab to have dry pipe connected extended up in dome of boiler. All arranged to be operated from deck of engine.

### **CAB.**

Built of hard wood well fitted and braced, with angle irons in corners and bolted through. One of the sashes on each side to slide. Doors in front to open out, arranged with guide and thumb-screw so as to be held in any position desired.

### **PILOT.**

Made of hard wood, firmly braced and bolted together, bottom of frame of pilot hauled with wrought iron, and secured by means of lag screws, and secured and braced to front of engine with push bar, etc.

### **FURNITURE AND TOOLS.**

Engine to be furnished with one alarm bell placed forward of the dome on top of cylinder part of boiler, arranged so as to be rung from cab. One signal bell in cab. Sand box placed back of dome. Steam gauge. Gauge cocks and dripper. Water gauge. Lamps and stands for steam and glass gauges. Two signal lamps. Head lamp, with brackets and lamp board. Full set of wrenches to fit all nuts and bolts, including one 15-in. and one 12-in. monkey wrench, one hard and one soft hammer, two screw jacks and levers, one pinch bar and other tools that may be necessary, with substantial boxes made of hard wood to hold the same. Boxes to be supplied with substantial locks. One 10-lb. tallow can and one hand can for oiling.

**GENERAL FINISH.**

Boiler lagged with wood, and jacketed with Russia iron, held in place by means of iron bands. Cylinders lagged with wood and covered with No. 20 sheet iron, painted. Cylinder head casings of cast iron; see drawing. Steam chests fitted with cast iron casing on top (see drawing), and eased with No. 16 iron on ends and sides.

Iron moulding rivetted round bottom of casing. Dome lagged with wood and covered with No. 16 iron. Cast iron casing top and bottom. All painted.

**TENDER AND TANK.**

**Truck.** To be supplied by C. P. R.

**Tank.** Tank to be made of iron. Side and back sheets and top sheets  $\frac{1}{4}$  in. thick. Bottom of tank  $\frac{3}{8}$  in. thick. Capacity of tank 2,600 U.S. gallons.

**Tank Frame.**

**PAINTING.**

Engine and tender to be well painted and varnished with two coats; colours desired will be given.

Tracings of details will be furnished to duplicate following parts, which are C. P. R. standard:—

Driving Axles and Boxes,  
Truck do. do.  
Crank Pins,  
Connecting Rods,  
Side Rods,  
Crosshead,  
Piston and Rod,  
Cylinder Covers and Casings,  
Steam Chest Covers and Casings,  
Valve and Buckle,  
Smoke Box, Door and No. — Plate,  
T Pipe,

Engine and Tender Trucks complete,  
Smoke Stack and Base,  
Fire Door,  
Blast Pipe Nozzles,  
Springs and Hangers,  
Pop Valves, Crossby pattern,  
Mud Collector and Plugs,  
Blow-off Cocks,  
Cylinder Cocks,  
Foot-steps,  
Grates,  
Eccentrics and Clips,

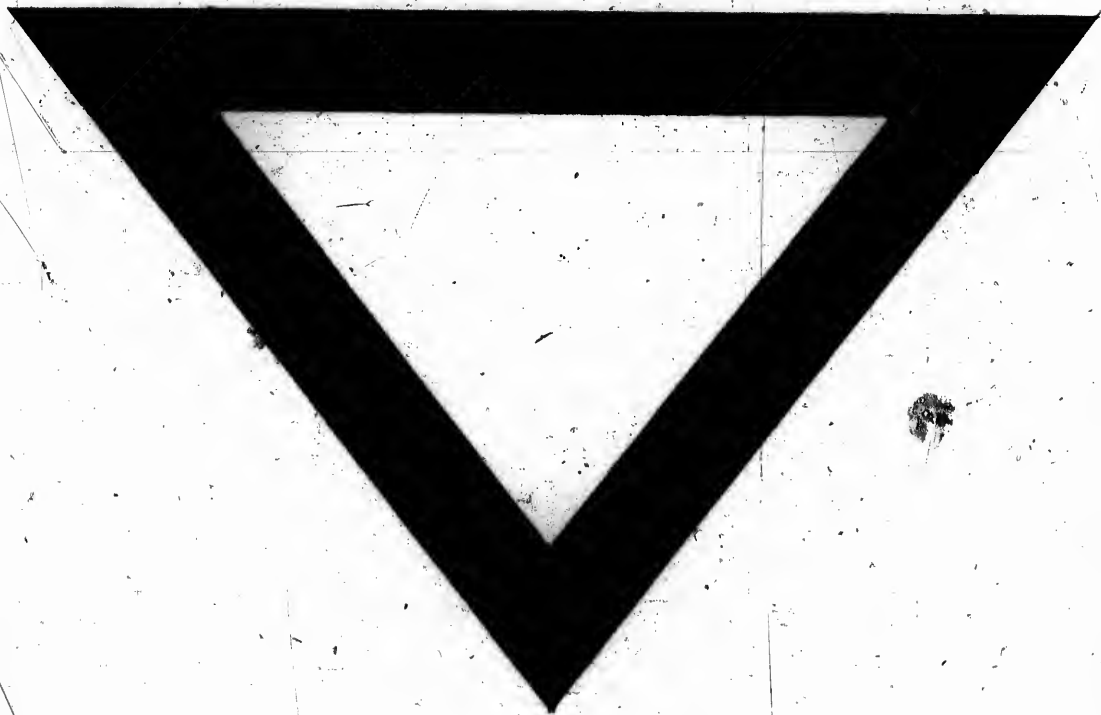
All material used in construction of locomotives and tenders to be of the best quality, and work well done. All parts to be interchangeable, and to be satisfactory to the Company's Mechanical Superintendent or his deputy.

*Mechanical Superintendent.*

OFFICE OF THE MECHANICAL SUPERINTENDENT. }  
MONTREAL, .....th, 18. .... }









SEP  
20 19

0

