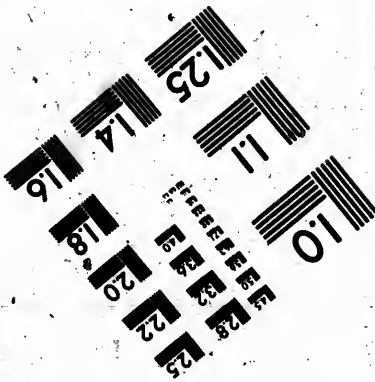
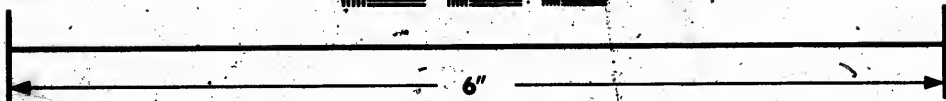
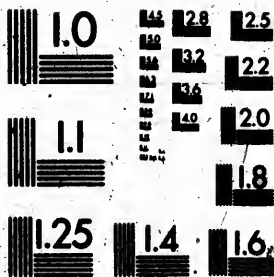


**IMAGE EVALUATION
TEST TARGET (MT-3)**



**Photographic
Sciences
Corporation**

23 WEST MAIN STREET
WEBSTER, N.Y. 14580
(716) 872-4503

Can

**CIHM
Microfiche
Series
(Monographs)**

**ICMH
Collection de
microfiches
(monographies)**



Canadian Institute for Historical Microreproductions / Institut canadien de microreproductions historiques

© 1993

Technical and Bibliographic Notes / Notes techniques et bibliographiques

The Institute has attempted to obtain the best original copy available for filming. Features of this copy which may be bibliographically unique, which may alter any of the images in the reproduction, or which may significantly change the usual method of filming, are checked below.

L'Institut a microfilmé le meilleur exemplaire qu'il lui a été possible de se procurer. Les détails de cet exemplaire qui sont peut-être uniques du point de vue bibliographique, qui peuvent modifier une image reproduite, ou qui peuvent exiger une modification dans la méthode normale de filmage sont indiqués ci-dessous.

- Coloured covers/
Couverture de couleur
- Covers damaged/
Couverture endommagée
- Covers restored and/or laminated/
Couverture restaurée et/ou pelliculée
- Cover title missing/
Le titre de couverture manque
- Coloured maps/
Cartes géographiques en couleur
- Coloured ink (i.e. other than blue or black)/
Encre de couleur (i.e. autre que bleue ou noire)
- Coloured plates and/or illustrations/
Planches et/ou illustrations en couleur
- Bound with other material/
Relié avec d'autres documents
- Tight binding may cause shadows or distortion
along interior margin/
La reliure serrée peut causer de l'ombre ou de la
distorsion le long de la marge intérieure
- Blank leaves added during restoration may appear
within the text. Whenever possible, these have
been omitted from filming/
Il se peut que certaines pages blanches ajoutées
lors d'une restauration apparaissent dans le texte,
mais, lorsque cela était possible, ces pages n'ont
pas été filmées.

- Coloured pages/
Pages de couleur
- Pages damaged/
Pages endommagées
- Pages restored and/or laminated/
Pages restaurées et/ou pelliculées
- Pages discoloured, stained or foxed/
Pages décolorées, tachetées ou piquées
- Pages detached/
Pages détachées
- Showthrough/
Transparence
- Quality of print varies/
Qualité inégale de l'impression
- Continuous pagination/
Pagination continue
- Includes index(es)/
Comprend un (des) index

Title on header taken from: /
Le titre de l'en-tête provient:

- Title page of issue/
Page de titre de la livraison
- Caption of issue/
Titre de départ de la livraison
- Masthead/
Générique (périodiques) de la livraison

- Additional comments: /
Commentaires supplémentaires:

This item is filmed at the reduction ratio checked below /
Ce document est filmé au taux de réduction indiqué ci-dessous.

10X	12X	14X	16X	18X	20X	22X	24X	26X	28X	30X	32X
					✓						

The copy filmed here has been reproduced thanks to the generosity of:

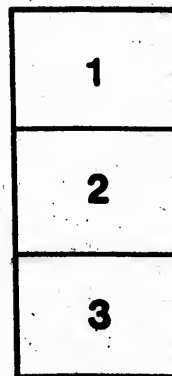
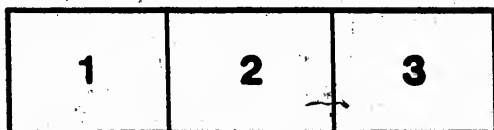
Metropolitan Toronto Reference Library
Arts Department

The images appearing here are the best quality possible considering the condition and legibility of the original copy and in keeping with the filming contract specifications.

Original copies in printed paper covers are filmed beginning with the front cover and ending on the last page with a printed or illustrated impression, or the back cover when appropriate. All other original copies are filmed beginning on the first page with a printed or illustrated impression, and ending on the last page with a printed or illustrated impression.

The last recorded frame on each microfiche shall contain the symbol \rightarrow (meaning "CONTINUED"), or the symbol ∇ (meaning "END"), whichever applies.

Maps, plates, charts, etc., may be filmed at different reduction ratios. Those too large to be entirely included in one exposure are filmed beginning in the upper left hand corner, left to right and top to bottom, as many frames as required. The following diagrams illustrate the method:



L'exemplaire filmé fut reproduit grâce à la générosité de:

Metropolitan Toronto Reference Library
Arts Department

Les images suivantes ont été reproduites avec le plus grand soin, compte tenu de la condition et de la netteté de l'exemplaire filmé, et en conformité avec les conditions du contrat de filmage.

Les exemplaires originaux dont la couverture en papier est imprimée sont filmés en commençant par le premier plat et en terminant soit par la dernière page qui comporte une empreinte d'impression ou d'illustration, soit par le second plat, selon le cas. Tous les autres exemplaires originaux sont filmés en commençant par la première page qui comporte une empreinte d'impression ou d'illustration et en terminant par la dernière page qui comporte une telle empreinte.

Un des symboles suivants apparaîtra sur la dernière image de chaque microfiche, selon le cas: le symbole \rightarrow signifie "A SUIVRE", le symbole ∇ signifie "FIN".

Les cartes, planches, tableaux, etc., peuvent être filmés à des taux de réduction différents. Lorsque le document est trop grand pour être reproduit en un seul cliché, il est filmé à partir de l'angle supérieur gauche, de gauche à droite, et de haut en bas, en prenant le nombre d'images nécessaire. Les diagrammes suivants illustrent la méthode.

977ms ML

CONSTITUTION AND RULES

OF THE

TORONTO

PHILHARMONIC SOCIETY.

ESTABLISHED 1872

TORONTO:

COFF CLARK & Co., PRINTERS, 27 & 29 KING STREET EAST,

1872.

0955-60860

MU-AR
780.6071
T59

THE
Toronto Philharmonic Society.

OFFICERS, 1872-73.

FIRST SEASON,—Oct. 1st, 1872, to April 1st, 1873.

PATRON.

THE HON. W. P. HOWLAND, C.B.
LIEUT.-GOVERNOR OF ONTARIO.

PRESIDENT.

THE REV. JOHN McCAUL, D.D., LL.D.,
PRESIDENT OF UNIVERSITY COLLEGE.

TRUSTEE.

H. J. MORSE, Esq.

VICE-PRESIDENT.

ROBERT MARSHALL, Esq.

SECRETARY-TREASURER.

JOHN HAGUE, Esq.

LIBRARIAN.

F. PEARSON, Esq.

CONDUCTOR.

J. P. CLARKE, M.D., Mus. Bac.

ASSISTANT SECRETARY.

BANKERS.

THE BANK OF TORONTO.

RULES

OF THE

Toronto Philharmonic Society.

OBJECTS.

I.—This Society shall be called the "TORONTO PHILHARMONIC SOCIETY," having for its object the practice and performance of Vocal and Instrumental Music.

CONSTITUTION.

II.—The Society shall consist of a Patron, President, Vice-President, Secretary-Treasurer, Librarian, Executive Committee and members—active and honorary.

III.—The Executive Committee shall comprise the President, Vice-President, Secretary-Treasurer, Librarian, and six active members, who shall make and cancel all appointments, and transact all business connected with the Society.

IV.—The Patron shall hold office permanently, and the other Officers above named, with the Executive Committee, shall be annually elected by and from the active members at the Annual General Meeting.

V.—Candidates for active membership must be proposed by two members of the Society, must be approved by the Conductor, and their application submitted to the Secretary to be dealt with by the Executive Committee. The subscription for active members to be \$1 per annum, and they shall be privileged to introduce friends to the monthly practices, subject to restrictions of Executive Committee.

VI.—Honorary members shall be admitted on payment of a subscription of \$5 per annum, for which they shall be entitled to three complimentary tickets to two public Concerts given by the Society, and free admission to the monthly rehearsals, subject to any restrictions of the Executive Committee. Active members on payment of \$4 additional annual subscription shall be entitled to privileges of honorary members.

RULES.

I.—The Annual General Meeting shall be held on the first Tuesday in September in each year, when the elective officers and members of the committee shall resign, after the presentation and acceptance of their reports, when officers and a committee to serve for the ensuing year shall be elected, for which the retiring officers and committee shall be eligible. Other general business of the Society may also be then transacted.

II.—The Secretary shall, when requested in writing by not fewer than twelve active members, be bound to call a *Special Meeting* of the Society within fourteen days from the receipt of such requisition, which shall specify the object of the meeting to be so called.

MEETINGS OF EXECUTIVE COMMITTEE.

III.—The Executive Committee shall meet once in each month, at such time and place as may be arranged, or

oftener, when required for special business, notice of such special meeting to be given in writing to each member of this committee.

MEETINGS FOR PRACTICE.

IV.—A meeting shall be held during the musical season for vocal practice, in the Hall of the Society, each Tuesday night, from 8 p.m. to 9 p.m., and one for instrumental practice each Friday night during the season, provided that it is competent for the Executive Committee to alter these dates, when such change is agreed to by two-thirds of those active members who take part in the respective practices. All joint practices of vocalists and instrumentalists shall be held on the Tuesday night in the last week of each month.

CONDUCTOR, ETC.

Director
V.—A Musical Conductor shall be nominated and appointed by the ~~committee, subject to the approval of~~ the majority of the active members, and receive such salary as may be agreed. His duties shall be to examine all candidates for active membership, select such music and musical talent ~~(subject however, to the sanction of the committee)~~ *(subject however, to the sanction of the committee)* as shall seem to him for the furtherance of the objects of the Society, and conduct all practices, rehearsals, and concerts. *shall be subject to the sanction of the committee.*

VI.—The Musical Season shall consist of the six month's, commencing first October, in each year.

CONCERTS.

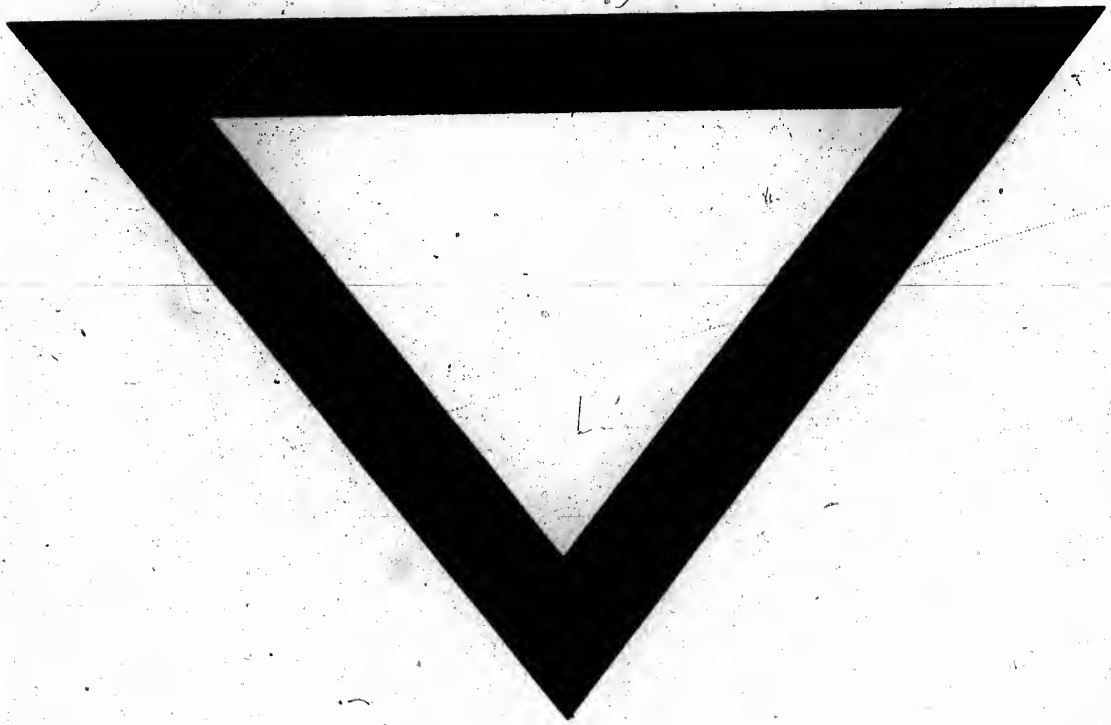
Not less than two Grand Concerts shall be given in the course of each season.

BYE-LAWS, &c.

I.—Such bye-laws as the Committee may make from time to time for the more perfect government of the Society shall be equally binding with these rules upon the members.

II.—Any of the above rules may be amended or rescinded, and any new ones added thereto, at any general or special meeting of the active members, provided that a copy of such proposed resolution be lodged by the proposer with the Secretary at least a week previous, and of which due notice shall be given to the members.





11

11

11

11



