

**CIHM  
Microfiche  
Series  
(Monographs)**

**ICMH  
Collection de  
microfiches  
(monographies)**



**Canadian Institute for Historical Microreproductions / Institut canadien de microreproductions historiques**

**© 1998**

## Technical and Bibliographic Notes / Notes techniques et bibliographiques

The Institute has attempted to obtain the best original copy available for filming. Features of this copy which may be bibliographically unique, which may alter any of the images in the reproduction, or which may significantly change the usual method of filming are checked below.

- Coloured covers / Couverture de couleur
- Covers damaged / Couverture endommagée
- Covers restored and/or laminated / Couverture restaurée et/ou pelliculée
- Cover title missing / Le titre de couverture manque
- Coloured maps / Cartes géographiques en couleur
- Coloured ink (i.e. other than blue or black) / Encre de couleur (i.e. autre que bleue ou noire)
- Coloured plates and/or illustrations / Planches et/ou illustrations en couleur
- Bound with other material / Relié avec d'autres documents
- Only edition available / Seule édition disponible
- Tight binding may cause shadows or distortion along interior margin / La reliure serrée peut causer de l'ombre ou de la distorsion le long de la marge intérieure.
- Blank leaves added during restorations may appear within the text. Whenever possible, these have been omitted from filming / Il se peut que certaines pages blanches ajoutées lors d'une restauration apparaissent dans le texte, mais, lorsque cela était possible, ces pages n'ont pas été filmées.
- Additional comments / Commentaires supplémentaires:

L'Institut a microfilmé le meilleur exemplaire qu'il lui a été possible de se procurer. Les détails de cet exemplaire qui sont peut-être uniques du point de vue bibliographique, qui peuvent modifier une image reproduite, ou qui peuvent exiger une modification dans la méthode normale de filmage sont indiqués ci-dessous.

- Coloured pages / Pages de couleur
- Pages damaged / Pages endommagées
- Pages restored and/or laminated / Pages restaurées et/ou pelliculées
- Pages discoloured, stained or foxed / Pages décolorées, tachetées ou piquées
- Pages detached / Pages détachées
- Showthrough / Transparence
- Quality of print varies / Qualité inégale de l'impression
- Includes supplementary material / Comprend du matériel supplémentaire
- Pages wholly or partially obscured by errata slips, tissues, etc., have been refilmed to ensure the best possible image / Les pages totalement ou partiellement obscurcies par un feuillet d'errata, une pelure, etc., ont été filmées à nouveau de façon à obtenir la meilleure image possible.
- Opposing pages with varying colouration or discolourations are filmed twice to ensure the best possible image / Les pages s'opposant ayant des colorations variables ou des décolorations sont filmées deux fois afin d'obtenir la meilleure image possible.

This item is filmed at the reduction ratio checked below / Ce document est filmé au taux de réduction indiqué ci-dessous.

|     |     |     |     |     |     |     |     |     |     |     |     |
|-----|-----|-----|-----|-----|-----|-----|-----|-----|-----|-----|-----|
| 10x |     | 14x |     | 18x |     | 22x |     | 26x |     | 30x |     |
|     |     |     |     |     |     |     |     | ✓   |     |     |     |
|     | 12x |     | 16x |     | 20x |     | 24x |     | 28x |     | 32x |

The copy filmed here has been reproduced thanks to the generosity of:

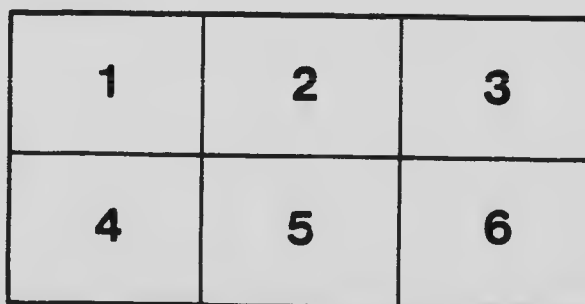
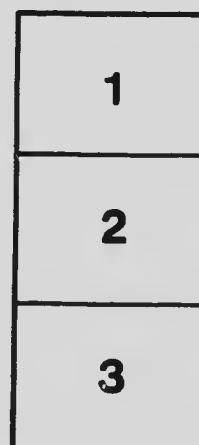
Morisset Library  
University of Ottawa

The images appearing here are the best quality possible considering the condition and legibility of the original copy and in keeping with the filming contract specifications.

Original copies in printed paper covers are filmed beginning with the front cover and ending on the last page with a printed or illustrated impression, or the back cover when appropriate. All other original copies are filmed beginning on the first page with a printed or illustrated impression, and ending on the last page with a printed or illustrated impression.

The last recorded frame on each microfiche sheet contains the symbol  $\rightarrow$  (meaning "CONTINUED"), or the symbol  $\nabla$  (meaning "END"), whichever applies.

Maps, plates, charts, etc., may be filmed at different reduction ratios. Those too large to be entirely included in one exposure are filmed beginning in the upper left hand corner, left to right and top to bottom, as many frames as required. The following diagrams illustrate the method:



L'exemplaire filmé fut reproduit grâce à la générosité de:

Bibliothèque Morisset  
Université d'Ottawa

Les images suivantes ont été reproduites avec le plus grand soin, compte tenu de la condition et de la netteté de l'exemplaire filmé, et en conformité avec les conditions du contrat de filmage.

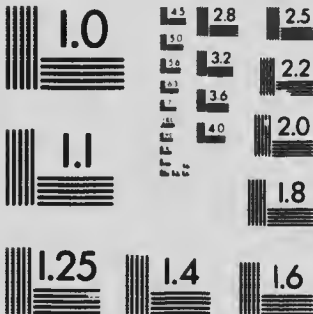
Les exemplaires originaux dont la couverture en papier est imprimée sont filmés en commençant par la première page et en terminant soit par la dernière page qui comporte une empreinte d'impression ou d'illustration, soit par le second plat, selon le cas. Tous les autres exemplaires originaux sont filmés en commençant par la première page qui comporte une empreinte d'impression ou d'illustration et en terminant par la dernière page qui comporte une telle empreinte.

Un des symboles suivants apparaîtra sur la dernière image de chaque microfiche, selon le cas: le symbole  $\rightarrow$  signifie "A SUIVRE", le symbole  $\nabla$  signifie "FIN".

Les cartes, planches, tableaux, etc., peuvent être filmés à des taux de réduction différents. Lorsque le document est trop grand pour être reproduit en un seul cliché, il est filmé à partir de l'angle supérieur gauche, de gauche à droite, et de haut en bas, en prenant le nombre d'images nécessaire. Les diagrammes suivants illustrent la méthode.

# MICROCOPY RESOLUTION TEST CHART

(ANSI and ISO TEST CHART No. 2)



APPLIED IMAGE Inc

1653 East Main Street  
Rochester, New York 14609 USA  
(716) 482 - 0300 - Phone  
(716) 288 - 5989 - Fax

# REGINA

WESTERN  
CANADA

OFFICES OF THE  
BOARD OF TRADE  
FIFTH FLOOR.



Victor Belanger

Cher

Nov 1, 14

# REGINA

The Capital of the Province of Saskatchewan

A CITY OF BEAUTIFUL BUILDINGS  
AND PAVED STREETS  
AN EDUCATIONAL CENTRE

Further information will be  
supplied by  
PUBLICITY COMMISSIONER  
REGINA :: SASK.

FURTHER INFORMATION WILL BE SUPPLIED BY:

L. T. McDONALD  
COMMISSIONER BOARD OF TRADE  
REGINA, SASK.

**R**EGINA, the Capital City of Saskatchewan is situated on the main line of the Canadian Pacific Railway, Grand Trunk Pacific Railway and Canadian Northern Railway. Regina also has direct connection with United States points, the Great Northern Railway having running rights over the Grand Trunk Pacific Regina boundary line. Twelve railway lines lead from Regina, bonds are guaranteed for ten additional lines.

REGINA leads the way as a distributing centre, in western Canada. It is the largest point of distribution of farm implements in the world, business in 1912 having exceeded \$25,000,000.

REGINA serves 2,255 miles of railway lines, on which are located 250 towns and villages. As a manufacturing centre, Regina has become noted, 36 factories being located in the city.

REGINA encourages industrial development. Spur track sites, situated within two minutes' walk of the very heart of the city, are owned by the city, and sold to industrial concerns at a low figure. This industrial area, already contains some 300 fine large buildings, in which is invested some \$30,000,000 of capital. This area is served by water, electric light and power, pavements, sidewalks and street cars.

Two-thirds of the 243,500,000 bushels of grain raised in the province, and 2,013,850 of the stock in the province, are raised in the districts of which Regina is the centre. Two-thirds of Saskatchewan's population of 700,000 reside in these districts.

REGINA is a city that has been built on town-planning lines. Clean streets are a feature. It is recognised as the best paved city of its age in Canada. The area inside the city limits is 7,850 acres. Of this

257 acres are devoted to parks and 75 acres to exhibition grounds for the provincial and other fairs.

REGINA being the capital city of Saskatchewan, and the seat of government, possesses a \$2,500,000 parliament buildings, the workmanship on which is conceded to be the best in Canada. These handsome buildings are located on the south shore of Wascana Lake. On the north side of the lake is located Wascana Park, which contains 47 acres. Immediately adjoining the park is the residential section. To the south of the parliament buildings, a goodly number of residences have also been built.

REGINA is the educational centre of the province including among its educational buildings, the collegiate institute, Regina college, Anglican college, ladies' Anglican college, Normal school, fifteen public schools, three separate schools and a number of business colleges. The Presbyterians have announced that they will erect a \$1,000,000 college; the Roman Catholic officials have stated that they will erect a college that will take second place to none in the city, and an application has been made by another denomination to the city council for a site for a college.

REGINA is a city of splendid churches and beautiful homes, as the accompanying illustrations will show.

REGINA is a city of municipal ownership, the power and light plant, the street railway and water works all being owned by the city. These utilities show handsome profits each year, hence Regina's low tax rate of 14 mills, which includes public school, library and collegiate taxes.

REGINA's population is estimated at 50,000 having grown from 3,000 in 1903. Since 1909 the city has grown from 12,000 to its present size.

For further information regarding Regina and its industrial opportunities apply to L. T. McDONALD, Commissioner, Board of Trade, Regina, Saskatchewan.

exp. 3  
M. O. C.  
1912  
- 36



HON. G. W. BROWN, LIEUTENANT GOVERNOR, PROVINCE OF SASKATCHEWAN.







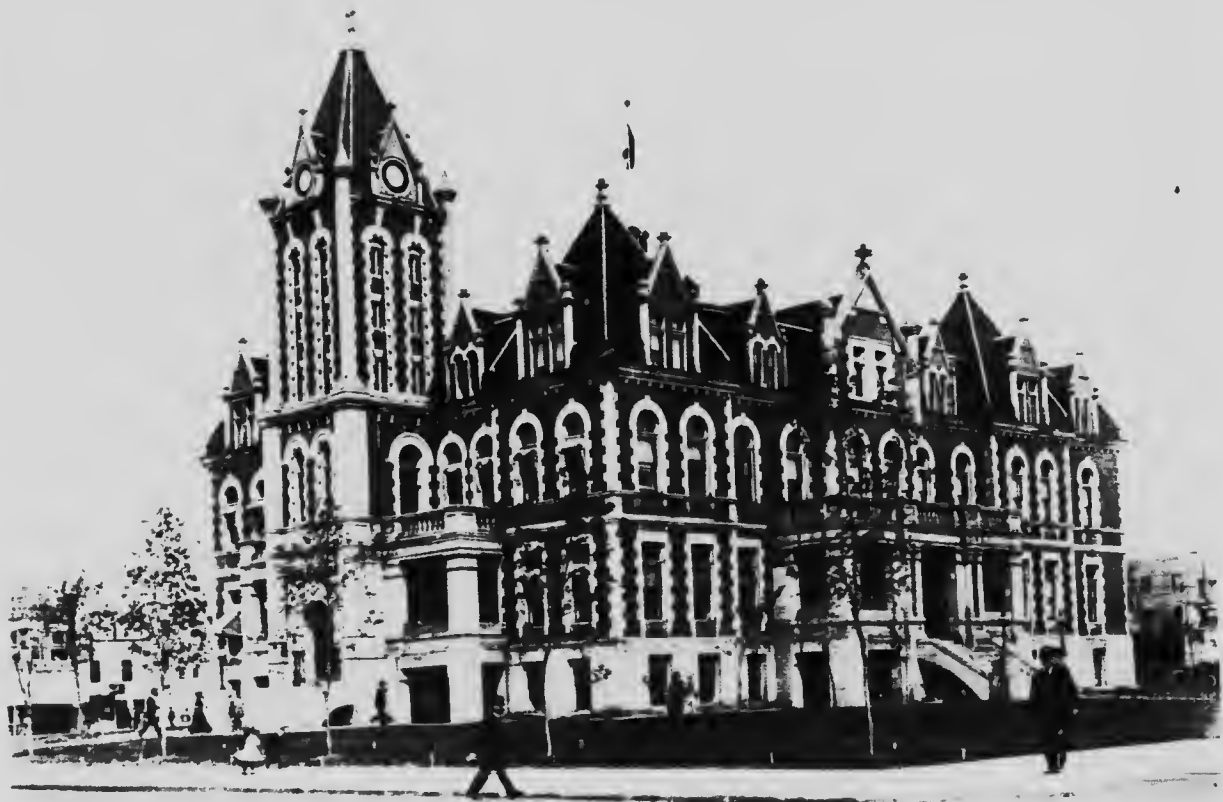
BOARD OF TRADE OFFICIALS, 1913

H. G. SMITH, President  
S. C. BURTON, Second Vice President

C. O. HODGKINS, First Vice President  
L. T. McDONALD, Commissioner and Secretary Treasurer



SASKATCHEWAN'S \$2,500,000 PARLIAMENT BUILDINGS AT REGINA



REGINA'S SUBSTANTIAL, UP-TO-DATE MUNICIPAL OFFICES



POST OFFICE, REGINA

HEADQUARTERS BARRACKS R.N.W.M. POLICE AT REGINA  
FIFE AVENUE, LOOKING EAST FROM CORNWALL STREET



SCARTH STREET, REGINA —NOTE THE NUMEROUS AUTOMOBILES —AN INDICATION OF PROSPERITY.



WESTMAN CHAMBERS AND DOMINION TRUST BLDG  
LOOKING TOWARDS CITY HALL FROM POST OFFICE

LOOKING WEST FROM POST OFFICE  
LOOKING NORTH ON SCARTH STREET FROM VICTORIA PARK



VICTORIA PARK, SHOWING MCCALLUM & HILL TEN STOREY BLOCK BOARD OF TRADE OFFICES FIFTH FLOOR.





VIEW OF REGINA'S FINANCIAL CENTRE  
LOOKING SOUTH ON SCARTH STREET FROM ELEVENTH AVE.

LOOKING WEST ON ELEVENTH AVENUE FROM HAMILTON ST.  
SCENE SHOWING BUILDINGS FRONTING ON CITY HALL SQUARE.



SCENES SHOWING HOW WELL WASCANA LAKE, INSIDE REGINA'S CITY LIMITS, IS PATRONIZED



A CORNER OF VICTORIA PARK, REGINA



A CORNER OF WASCANA PARK, REGINA, SHOWING THE LAKE



LOOKING SOUTH-WEST FROM CITY HALL

SCARTH STREET LOOKING SOUTH FROM SOUTH RAILWAY STREET

SCARTH STREET LOOKING NORTH FROM TWELFTH AVENUE  
IN THE FINANCIAL DISTRICT

ELEVENTH AVENUE LOOKING WEST FROM ROSE STREET



PANORAMIC VIEW SHOWING HOW SUBSTANTIALLY REGINA'S  
INDUSTRIAL

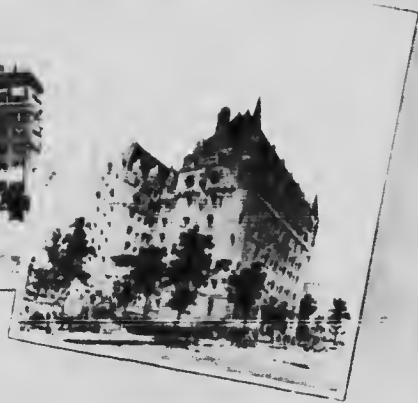


REGINA'S BUSINESS CENTRE IS BUILT

INDUSTRIAL SECTION SERVED BY TRUCKAGE TWO MILES' WALK FROM DISTRICT SHOWN ABOVE.



VICTORIA PARK, SHOWING METROPOLITAN METHODIST CHURCH AND Y.W.C.A. BUILDING



CANADA LIFE ASSURANCE CO. BUILDING, REGINA  
HAMILTON STREET LOOKING NORTH FROM TWELFTH AVENUE

IN FRONT OF REGINA CITY HALL

LARGE BUILDINGS SURROUND VICTORIA PARK  
G.L.P. RAILWAY 12 STOREY HOTEL

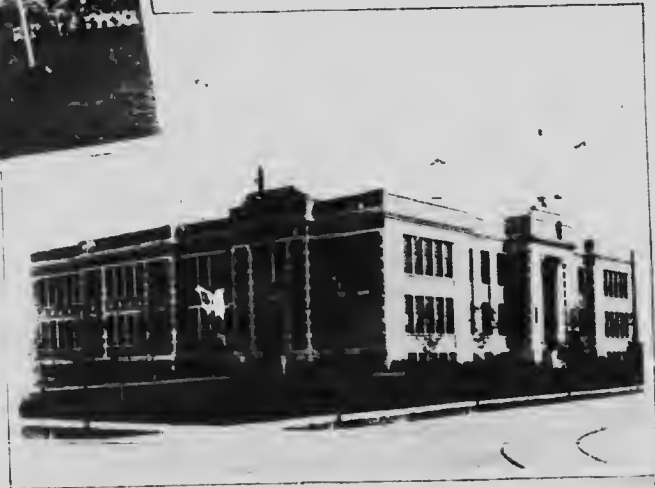




ASSINIBOIA CLUB, ONE OF REGINA'S UP-TO-DATE CLUBS



CHILDREN'S PLAY-GROUNDS UNDER SUPERVISION ARE A FEATURE



REGINA'S COLLEGIATE INSTITUTE



COLLEGIATE CADET CORPS, REGINA



UP-TO-DATE MOTOR FIRE FIGHTING EQUIPMENT IS USED IN REGINA



BANK OF OTTAWA



SOME OF REGINA'S BANKS  
CANADIAN BANK OF COMMERCE



THE NORTHERN BANK



IMPERIAL BANK OF CANADA, REGINA



BANK OF MONTREAL, REGINA



REGINA STREET IN THE BUILDING



FIRST BAPTIST CHURCH, REGINA



ST. PAUL'S ANGLICAN CHURCH  
CENTRAL PRESBYTERIAN CHURCH

FOUR REGINA CHURCHES

METROPOLITAN METHODIST CHURCH  
KNOX PRESBYTERIAN CHURCH





AT SASKATCHEWAN PROVINCIAL FAIR AT REGINA

CROWDED GRAND STAND AND PAIR OF BLEACHERS  
ENTERING THE GROUNDS

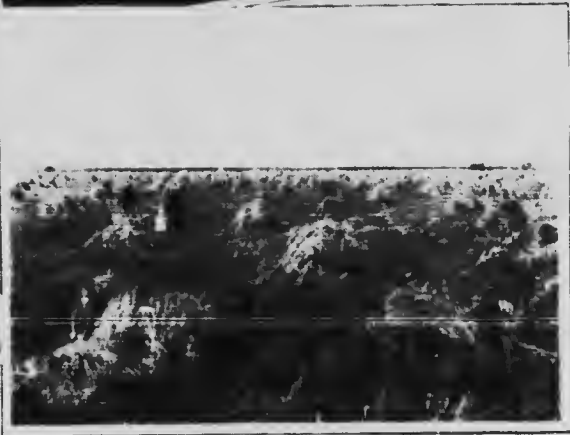
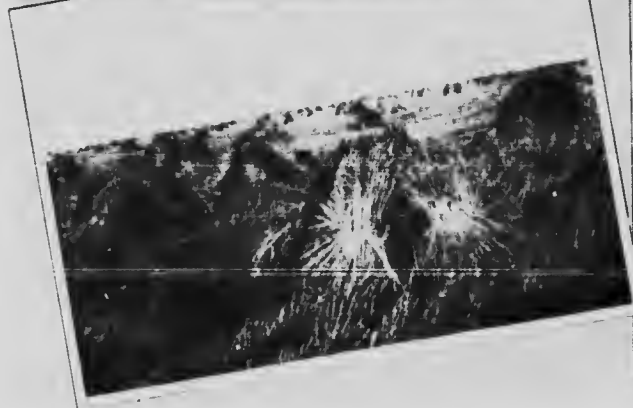
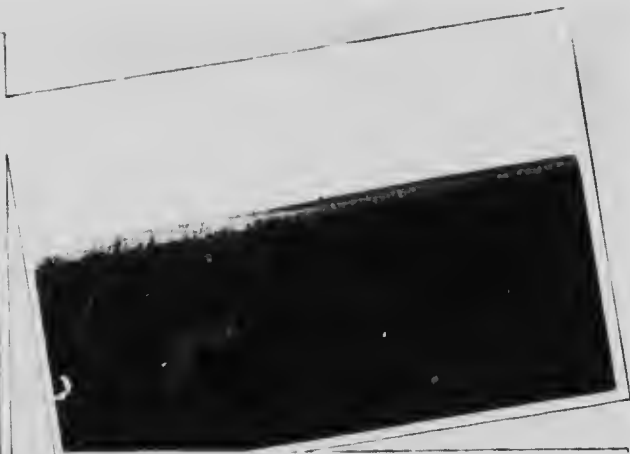
LIEUTENANT GOVERNOR BROWN OPENING FAIR  
SCENE ON THE GROUNDS



EXHIBITION SCENES AT REGINA

LOOKING WEST FROM EAST END OF GRAND STAND  
JUDGING CATTLE

GENERAL SCENE ON GROUNDS  
ROW OF STOCK STABLES



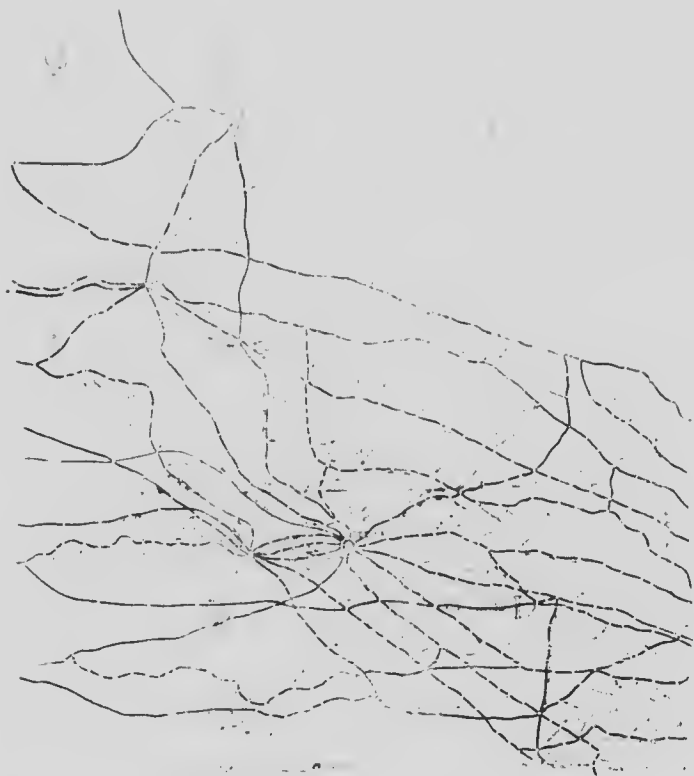
SCENES IN GRAIN FIELDS NEAR REGINA



REGINA'S BEAUTIFUL HOMES

W. H. A. HILL'S RESIDENCE  
J. M. YOUNG'S COSTLY RESIDENCE

HOME OF E. MCCARTHY  
E. D. MCCALLEM'S SUBSTANTIAL HOME



## THE RAILWAY OCTOPUS

Twelve Direct lines now operating.

Ten Lines additional. Bonds guaranteed.

