

SETA NEOEI

NO. 263

MIGMAOI SOLNALTJITJ

MAR. 1909

LE MESSAGER MICMAC

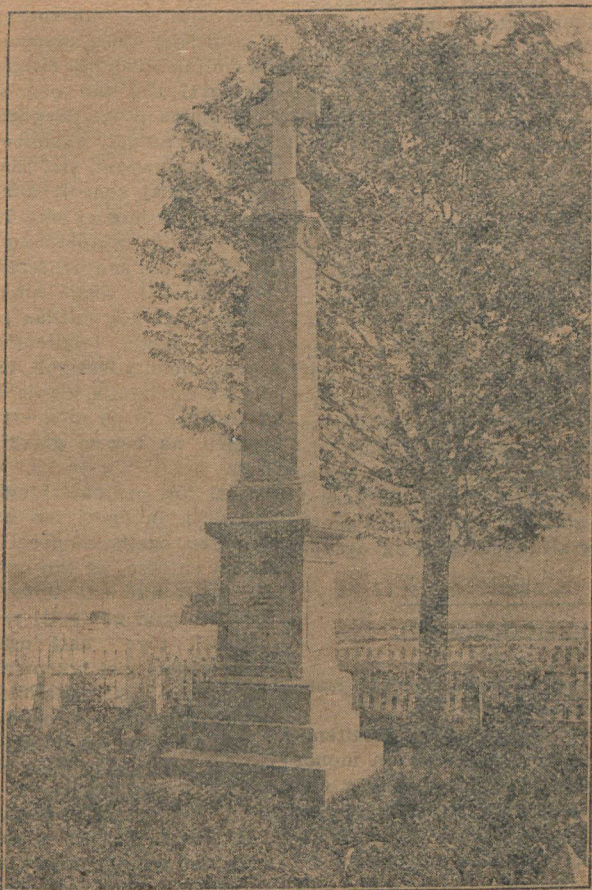
Petit Journal Mensuel publié par le R. P. Pacifique, Missionnaire, à Sainte-Anne de Restigouche, P. Q. Paraît le 1er du mois. Abonnement, 50 sous.



THE MICMAC MESSENGER

Yearly Subscription, 50 cents; Single Copies, 5c. For Ads. see last page. Address all communications to Rev. F. Pacifique, Restigouche, P. Q.

MONUMENT ERECTED TO THE MEMORY OF FATHER MASSE
missionary to the Micmacs, at Port Royal (1611-1613). His remains were found under the ruins of the first chapel of Sillery, where he had been buried, (1616), and this monument was erected thereon (June 26, 1870).



MONUMENT DU PÈRE ENNEMOND MASSÉ
(Faveur de M. C. J. Magnan, directeur de l'Enseignement Primaire.) Le P. Massé a été un des premiers missionnaires des Micmacs, à Port Royal. (1611-1613).

TETLI OTGOTALOS L NOI PATLIASAG MASEIÖG

gigtjlo Gepeg, 12 tes. sonningeoi tepg. 1616. Negemag temg geginamoaseniga lno Migmaga, nespi ginamoeteg Pialög teoapsgig (1611-1613). Negem pa amsgoeseoi patlias tan ell ginamasis omigmaolsin.

REMERCIEMENTS

R. A. R. Saint Joseph, \$2.
J. P. Heatherton, \$1.

PASTONGEOEL, EPEGOITNEOEL,
ag Oagametgogeoi oigatigen igatoten
oetigoeot teppenoesel.

6 Ogsetateo tan oen siaoi oli alaso
notnat; eln 6gotj alaso tmaganigtog
oetji nemot Gtjinisgam, oetji nemot
teli msegilig ag gelosit, elp gino tell
tjelöltigo; oetjlag gmelgigenatineno
ag gentaoi oisoigerötemeneno tan elo-
eotigtog elalöog ag metoegtigtog og-
sitgamogoeoi (G. Piel Sieneoel.)

PATLIASEOEI GELOSOAGAN

Ola tepgenoet galemeoimgeoei tel-
disig, elp Sösepoimgeoei, meta igag
ola pestleoimig 19 tes. tepg. ag tan
telpitögsilitj metj emtögoalot.

Sapeoit Sösep nigani notji apogon-
emoet ola gemetginag ag notji tetögol
apögönemoet santeoi mesta Maoiömig-
teg.

Oigoitjitanetj teli melgigenat Gisol-
gol osgalog ag teli olitelmolg tan tes-
igo. Sapeotigog eli tgonasitisenel
gitjinal Malial, tögo angoeioasanel Nis-
gam mitjoatjitjel; na negem ögotj san-
geoei nagap ag getleoet tan Gitjisag-
mal ignemasanel ogtalsotemen oig ag
mset oenel ogtelli atgenoatemoan olo
tan tetpigaga; na negem pagalamot
tjinem miamotj maoi emtögoalot tan
ogsagmamel notjeioasanel mitjoatjitj-
eolipenel, Gisolgol gesalsepenel, el-
neogatig ngoti mgitelmoseni tesilipeni,
tan netaoi apögönemoasanel Gtjisape-
eilitjel ogtelogoöoaganigtog.

Teli msegig tög ola sapeoino Sösep,
teli espi nsetoeg, ogtjijitj gino lög gep-
antelmaneno ag gsinol npoigoitelma-
eno; taonetj metj nigetj ag elmiag
gelotemelseoggoneno Oestaoligoigtog;
npoatolgotj gmatjolgoatemoaneno teli
penögoitelsis, oagamegsep ag petjilita-
sis Gisolgoigtog, tögo nagsi sgatemoas
telgimsepenel; gionagatj teli nenoitel-
mot Nisgameoi oigatigenigtog ogögoa-
tijen ag sapeoin atignetemenetj nespi
sapeoineno, golaman elp nespi npetes-
no Gisolg ogsaltimgeoeigtog ag ogsap-
eotimigtog.

GALEMEOIMGEOEL

Gis pögtamiagep galemeoimig sist-
oeieig elogotimgog.

Ola nagoeg **Tepgoantimig** teloitem-
og, tllisipögotj igatimg tepgoan monot
jeg, telegsepenig negela sagaoegig oeli
oniapsoltitig, pemi galemeoimigel siao
tiatgitemoltisenig. Patlias tepgoan
igatoetjel et: 'Migoiteten, elnoin, gil
in pa sig tepgoanin, tjel tepgoanigtog
minoi gioansgasitesg;' teli migoitete-
molg tan gis mset teli ilsomgsooltigo
npoaganigtog, eloeoti telalnogsep; og-
tjijitj tög npoagan gtelaptemeneno is-
tege andlasoagan, ag gtol mnenemeneno
tan pa tllisip igaga; metj aptj nigetj
gpögtji aniapsoltineno tesigisgeg **Son-
eoimigel** ag tapogonag goeltamimgel,
sisteoei eta ag goeltamoltimg, gisi pgo-
atogo; tan ögotj oasam maltjeoetj me-
nag tapoisgegiponaog tjel neogt, gis-
na epit pemaloetj gisna nosesgoetj, elp
eta tanig lög atigentemittij mtol log-
öoagan gisna tanig amaseg ell mteme-

tatjig telegig mo pa gisi soneoitig; me
sgato tesit oen natji ginoatoatj pat-
liasel, golaman ma gsepogoalsiog ag
ma peli aniapsiog.

Ln ögotj miamotj gtjijitonetj, nig-
matot,—lei mesgig teli patatög tan
peli soneoit tjel neogtgonag mo tjela-
tog, ag tesogonag potematj tes jiloei
eloeoti; 2ei, tan soneoit pa sig neogt
oatjoatig, natami aniaolagoeg; tögo
oelagoeg gitjigatj gisi malgotg natami
agataig engatigen; ag elp esgitpog gtol
nsamogoatj gögoetjijit ag mestögölem-
atimg mitjijitjeoei mögoetj atjgenenog;
sgato me pigoelatalg patatacit;—3ei,
ngotai patateget tan emitogoalatjel ol-
tji galtititjel gisna oigomatjel oposga-
talaneo tan tllisip mö tetapoianog;—4ei,
patategetj tjel tan oen soneoit, tögo
neogt sinioa posgi ilasgoeot, amalgat,
einasis, getanget, pilsimoet, elotemag-
aniget, matnapget, tjel tlia pa sig ma-
leg; ln ögotj soneoti miamotj aniap-
simg, oetgölsimg ag natoötegemg;—5ei
mögoetj inim oelapetemog soneotj og-
tjijit oasög tan mo oelitetemogoi onma-
tjöttil meloittj posgi anselapogoejt.—

Telgig oetgölnög patlias pögtji gale-
meoimigel, telgig telgimolög, tliatj mo
negem, meloittj Sesogoli, tan temg son-
eois ag goeltamis glapis 40 tesogonag
ag tesitpag ln pa mögoetj gögoei mes-
atogsep, na negem giasgio, telimolög:
'Tan getoi nigatneittj, mimogoalsitj,
soatotj tög pemnigatj ogtlotjjeoeim ag
nosogoitj, ln ögotj tan oen msonitetg
ostaoiton ogsitgamogoeoi ogmimatjoa-
ganem entoteo, ag tan oen na gtol en-
tög ogtjijit nin ostaoitoteo; meta tala-
pesis lno gagi ganleoittj tesigel ogsitga-
mogeoei, tögo natj ogtjijitjagamitjel,
gisna gögoei gisi ignemoetoteo ogtapa-
tji msenan ogtjijitjagamitjel? meta lno
ogoiselji pögsinteo otjel gsgaelmegso-
tigtog ag nespi maol patjitatag otansa-
lemittij, tögo tllisip mset oenel apangit-
oatal tan tellogoelittja.'

PAGEOIMGEOEI miamotj elogoate-
meg elmi galemeoimigel, netna oeli pa-
gapogoeimg ag gemnieoimig mo gtessig-
esoltip, nigmatot, ogtjijitj metj ogtol-
ten gsoneotioöo, gesg metj oagameg
gamiamonoal. Tepetog gionagatj oin-
pasoltigo getel pa gioansgitaneo lami
gtjijitjagamitjoag, pageoimig ögotj tel-
oeg atjatimg netna menagatj eloeotiei
npoaganigtog ogtjijitj atjtago sapeotiei
mimatjoaganigtog, ogsitgamogeoei po-
nitetemog ag oasögligtogel pilli gisita-
soltigo. Log tjijipatemog gsegeoi gem-
nieoltineo; mo pa mimatjoagan ogtjijit-
atöög: 'Tan mo gigoatj tllislog, Pöl
teloet, onmatjijitj llsotagan malgötg ag
nesamogoatg ogtjijitj eta mo tepgisi mi-

soitetemoagol Gtjäsagmal ogtinin.

Pigoelgig eta gemnieotigtog minoi apgoalatitjel Sesosel, istege Sota, mentoigtog getoi igalatitjel, net negela tanig metj pemi gtangetjig, tanig ntägögöni loeotigtog getoi pmi gamigsoltitjig, tanig mo getoi opangitemitjigol gemotnatasigel gisna tetoögönel, tanig getoi mimogcoatemittitjel ogteloetil gisna mo pa getoi masgitetemitjigol gisna mo getoi ponatotitjigol. Oli tög angitasoltigo, oli msegetasoltigo, oli pagapogcoatigo, oli ilatotigo telöhtiögöp golaman ma segeoi ansatoög Sesos ogtinin ag omaltem gemnieotigtog. Tögo elp gisalog genitjanoag ag tanig alsomögig telgig ogtetapoi msenemeneo; tjiptog gigoag oimüitjig gesinogotitjig gisna etjölöhtitjig, mo gnagatji agnotemoap gotjoö patliasa.

Gesg soneoiög, nigmatot, ag gionagatj etog mesi soneoiögöel, miamotj maoui alasotmelseogtoltigo, maoui gsaltoltigo, apigsigtatoltigo, metj ngotiteloltigo, pmi apögönematoltineo, gnatoötegeneo, gteolitelgeneo, gtali mitogoolance nengap pelnatitjig gela aneo eoeltjölhtitjig ag mset oenig natalietitjig. Gionagatj gemotnatasigel miamotj apatjatog, mo ögotj tepianog pagapogcoatemeneo negela. Elp eta gtetooögönel apangitemog; lno mo getoi gögoatjatogol tanel tettoetjel, istege gemotnatgel malsaneolmgeoeel; malsanag eimöbitjig mitjioetjoeel nigani ignemolögöl ag asoneoegen, tög negela apangitemog; mo oellanog gtaligamoal gtignemoaneo piloeg malsanag gisna segeoeeg gtelögöoaneo; telmetotitjig getel etog gemotnatitjig. Latin ngotel eteg; gtjipatliasa ögotj teli peoatg mset lno migmaoit patliasel ogtapögönemoan ag alasotmögödm ogtangötemen; me sgato mo gteltasoltitjig gteli pgoatelmaneopagapogöti gisna gemnieoti gisna alames; mo ngotel getel pa mo ngotel; maoen patliasa gisi ntolsgetog alames gisna pageolmgeoeel gisna piloei saiteoi gögoel; solioel igatoög, gisna piloei gögoel ignemoögöl, gotjoö patliasa ogtji mimatjin ag ontaii saliteoategen; negem ögötj mo gisi getantog mitjip-tjoeel tan metj pemoigiget gisna egil-tjet, golaman gisi ginamolögteo gileo mset elnoltjög oenitjangat gtinleoöo. Na ogtjit pemi galemeoimgel mo gnagatji gögoatjatop tettoögönel, gemotnögönel ag olatagatigo siaoio.

GALEMEOIMGEOEI

(Audi, benigne Conditor, p. 257.)

1. Notoin, Ngisölgominen, Etamoleg notolainen,

Oesoatoog soneoimgel,
Sapeoig galemeoimgel.

2. Nenoieg eolöhtieg,
Sesos, sapaptemoieg
Lami ngamilamoninal,
Gasatoin nteloeotinal,
3. Lnim patatagatieg,
Sgato pagapogcoatieg.
Aniaptemegel oinsotil,
Mitatoin oisgesotil.
4. Naginal aniapsoitigtog
Ag alasotmaganigtog.
Nisgam, ntjittjagamitjinag
Nsatoin neoinsgeogonag.
5. Oli ngoti Nesesoti
Ilatoin soneoti
Negao nolapetemenen
Teli aptjetjigel nilonen. Amen.

E. Otansalemg elgimaseni

A. Gpemi angociaoneo mset tami
falieneel.

AGNOTEMAGANTJITJEL (Little News of the Tribe)

LISTOGOTJG—16 tes. 2ei tepp.—
Alasotmelseoanetj Noel Tesiplög gis-
log neppag miaolagoeg, 46 tesiponatag.

OAGMOTGOG onamagig—apgnatjit
11 tes.—elpatos neppg teloisit Antle Pal
maltjeoetj 21 tesiponat, asogömtesitjig
teppenoesetjig teli pgitji gsinogoatg
patliasa gisi logoalta ponamolgosa 12
tesogonitgea ag \$9.00 patliasa ignemotj
otjit apögenemasotia ag pigoelgig
mimatjoinogig petjitatgiga 42 tesitjig
tangigseeg otan telegiga.

NATOAGNEG nige 16 tesitjig eloit-
emasolnog ag teplotagen igasaisig 27
tes. pon. tepp. 1909, tjinem apangigt
\$1 neotipongeg, nige oetjategemg na-
nipongeg, 1914, ninen apögönemoates-
nen gsinogoatja glapis otji meoioitj,
mo otji nseioeg me elmi apögönem-
oatesnen glapis oetjjeoeel otgotagan-
igtog ag alames ignemoatesnen.

ESGISOGNIG mitjoatjitjag neppa-
penag, ögtöpelög, Noel Töni onitj-
amel.

MIAOPOGEG 6 nit pon. mitjotjittj
neppg pon. 4 eg, gisgog otgotalot nan-
ipontag, teloisitag Alegsantel Tjö. Ag
neotetjittj epitetjittj melgi gsinogoat
teloisit Matlen Gletöl.

Nigola Gletöl matjasitag gtjigosög
29 tes., amsgoes pa elles St. John's
ag giotasitj gtagamgog patliasa elgi-
mtj solioeget otjit pilei alasotmög-
ödm.

Maol gsi otjipageg gtjigosóg 8 iteg tanel maol espi otjipageog ginogagenel na gato eli glaspi otjipageg 19 1-2 tesigel mtitjinel.

Ag nige gesig pigeeli agaseoltitjig elpatosg spletg etlogottitjig ag me aptj gtegig getoi litatjig, lóg oelaotig apangetoóoel. Me elp gitjga lnoq natel elmotitjig neogoi ogtjigsog eigig, ag gentelpe góspemg nesisgel. Eln tepetog tan teli angóoolegagnóg nige ola tógoag maol eponeg eliaq, maoen soel tan me oeli gisitóg; gato etas metj gitgatjig San Maltai tlei onamagig na negem nipogtog 6 tesigel agentieolmgel teli pgtji gsinogoat 4 ag. pa mo tan soel pegoansigo na golapis meoleoit gistegsigteman, gtjigosóg 23 metógslep.

GTJIPOGTOSGEOELI agnotehagan

—Aplg. 16 tes.—ept eig ag ogoetjitel tapogoatogotjig, otjinemomel ag ofjel elatitij manteng oapq apatjatitjig olgoaga nemitotij paglaloagan, nemiattitel pilel mitjoattitjel nepelisenena pa sig elaositag agtagisgega samogoaeng mesnegsepeneg, gisigoisgoóg oentjoisgoóg elapalaxa, teloitota Malgelit.

Maol olóhtieg ag elogotieg, pigeeli elogóoagana pigantel ag potalioel ag malantel telgoasgoftemittitel maltetj oagel menten elótotitjel telaotigel enpias, gato potalioel telaotiger neotagigtjel agtaig latosena. Nin Natoen.

ELSEWIGOG—oetjig pitag oigatigen maol gelog, eln tepetog aglasieoigasig. Tan gionagatj agnotg, netna pilel lno sagmao, Lol Piel, gisi pogoalot oapq noleolimgeg. Elp nige pilel patlias natji ginamoet, getjino Grace cloisit. Tógo tliisip Toma Tjipotjiti otepitemel nepgena 1 tes, oasóón. tepp. ag San Piel otepitemel gesinogoattitel. Sóssep Lapito nigani alasotmat, ag gelog giginamoógoóm, Malitj Shay notji ginamoetisgo, 18 tesitjig mitjoattitjig sgoleoitjig. San Tjipotjiti notjótg alasotmógoóm, maogsateget ag esgolag.

LISTOGOTJG—tapoóoel elogotimgeg 23 tes. malleoipenig Antle Tjansen ag Elisapet Lapóp. Gagiag nige lapigót aptj panteteg alasotmógoóm ag tetli ginamatimgel.

Getjino gtjipattias menaogsegeontj oigatigenigog tan egitemegsep tesig alasotmógoóm 21 tes. apeg. tepp. oetgólóet amalgeoagan. Elp teloes tan teli nsanóónig mentoel pogteoitjig. Na ogtetjig ilsoiges oini gitjcmgeoi. (Moncton Transcript, Feb. 24.)

ADVERTISING RATES

The Micmac Messenger will receive a limited amount of advertising at the following rates:—

Reading Notices, .10c. per line; Display Advertisements, .50 cts. per inch; Reading Notices, per line, 1 year \$1; Display Advertisements, per inch, 1 year \$3.00. Printed in English, French and Micmac or either at will.

Parties wishing to reach the Micmacs of Québec, New Brunswick, Nova Scotia and Newfoundland will find this an excellent medium.



SYNOPSIS OF CANADIAN NORTH-WEST LAND REGULATIONS

Any person who is the sole head of a family, or any male over 18 years old, may homestead a quarter-section of available Dominion land in Manitoba, Saskatchewan or Alberta. The applicant must appear in person at the Dominion Lands Agency or Sub-Agency for the district. Entry by proxy may be made at any agency, on certain conditions, by father, mother, son, daughter, brother or sister of intending homesteader.

Duties.—Six months' residence upon and cultivation of the land in each of three years. A homesteader may live within nine miles of his homestead on a farm of at least 80 acres solely owned and occupied by him or by his father, mother, son, daughter, brother or sister.

In certain districts a homesteader in good standing may pre-empt a quarter section alongside his homestead. Price \$3.00 per acre. **Duties.**—Must reside six months in each of six years from date of homestead entry including the time required to earn homestead patent and cultivate fifty acres extra.

A homesteader who has exhausted his homestead rights and cannot obtain a pre-emption may take a purchased homestead in certain districts. Price \$3.00 per acre. **Duties.**—Must reside six months in each of three years, cultivate fifty acres and erect a house worth \$300.00.

W. W. CORY,

Deputy of the Minister of the Interior
N. B.—Unauthorized publication of this advertisement will not be paid for