

**CIHM  
Microfiche  
Series  
(Monographs)**

**ICMH  
Collection de  
microfiches  
(monographies)**



**Canadian Institute for Historical Microreproductions / Institut canadien de microreproductions historiques**

**© 1997**



The copy filmed here has been reproduced thanks to the generosity of:

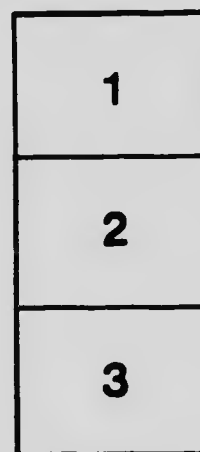
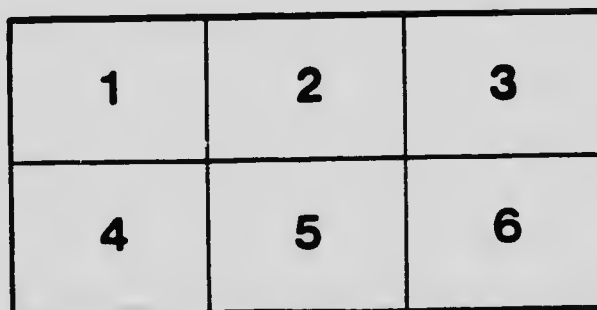
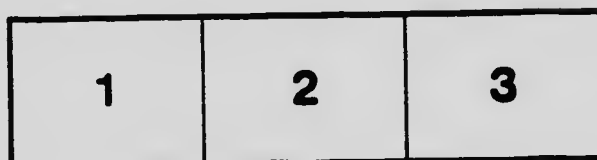
University of Western Ontario,  
Sciences Library.

The images appearing here are the best quality possible considering the condition and legibility of the original copy and in keeping with the filming contract specifications.

Original copies in printed paper covers are filmed beginning with the front cover and ending on the last page with a printed or illustrated impression, or the back cover when appropriate. All other original copies are filmed beginning on the first page with a printed or illustrated impression, and ending on the last page with a printed or illustrated impression.

The last recorded frame on each microfiche shall contain the symbol  $\rightarrow$  (meaning "CONTINUED"), or the symbol  $\nabla$  (meaning "END"), whichever applies.

Maps, plates, charts, etc., may be filmed at different reduction ratios. Those too large to be entirely included in one exposure are filmed beginning in the upper left hand corner, left to right and top to bottom, as many frames as required. The following diagrams illustrate the method:



L'exemplaire filmé fut reproduit grâce à la générosité de:

University of Western Ontario,  
Sciences Library.

Les images suivantes ont été reproduites avec le plus grand soin, compte tenu de la condition et de la netteté de l'exemplaire filmé, et en conformité avec les conditions du contrat de filmage.

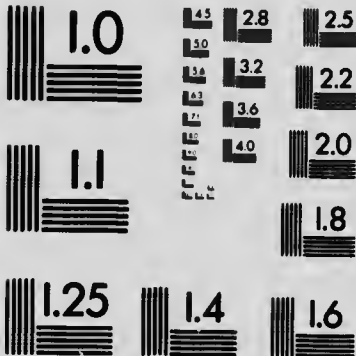
Les exemplaires originaux dont la couverture en papier est imprimée sont filmés en commençant par le premier plat et en terminant soit par la dernière page qui comporte une empreinte d'impression ou d'illustration, soit par le second plat, selon le cas. Tous les autres exemplaires originaux sont filmés en commençant par la première page qui comporte une empreinte d'impression ou d'illustration et en terminant par la dernière page qui comporte une telle empreinte.

Un des symboles suivants apparaîtra sur la dernière image de chaque microfiche, selon le cas: le symbole  $\rightarrow$  signifie "A SUIVRE", le symbole  $\nabla$  signifie "FIN".

Les cartes, planches, tableaux, etc., peuvent être filmés à des taux de réduction différents. Lorsque le document est trop grand pour être reproduit en un seul cliché, il est filmé à partir de l'angle supérieur gauche, de gauche à droite, et de haut en bas, en prenant le nombre d'images nécessaire. Les diagrammes suivants illustrent la méthode.

# MICROCOPY RESOLUTION TEST CHART

(ANSI and ISO TEST CHART No. 2)



**APPLIED IMAGE Inc**

1653 East Main Street  
Rochester, New York 14609 USA  
(716) 482 - 0300 - Phone  
(716) 288 - 5989 - Fax

PROVINCIAL MUSEUM, VICTORIA, B. C.

---

CATALOGUE

—05—

BRITISH COLUMBIA LEPIDOPTERA.



---

VICTORIA B. C.

Printed by RICHARD WOODMAN, I.S.O., V.D., Printer to the King's Most Excellent Majesty.

1904.

*Temp. C. H. Anderson*

PROVINCIAL MUSEUM, VICTORIA, B. C.

CATALOGUE

--OF

BRITISH COLUMBIA LEPIDOPTERA.



VICTORIA, B. C. :

Printed by RICHARD WOLFENDEN, ESQ., V.D., Printer to the King's Most Excellent Majesty,  
1904.

1331

## PREFACE.

—:0:—

This list, though by no means complete, will at least serve as a basis for future work.

The arrangement is according to the list of North America Lepidoptera' Bulletin of the United States National Museum, No. 52, by Harrison G. Dyar, Ph.D.

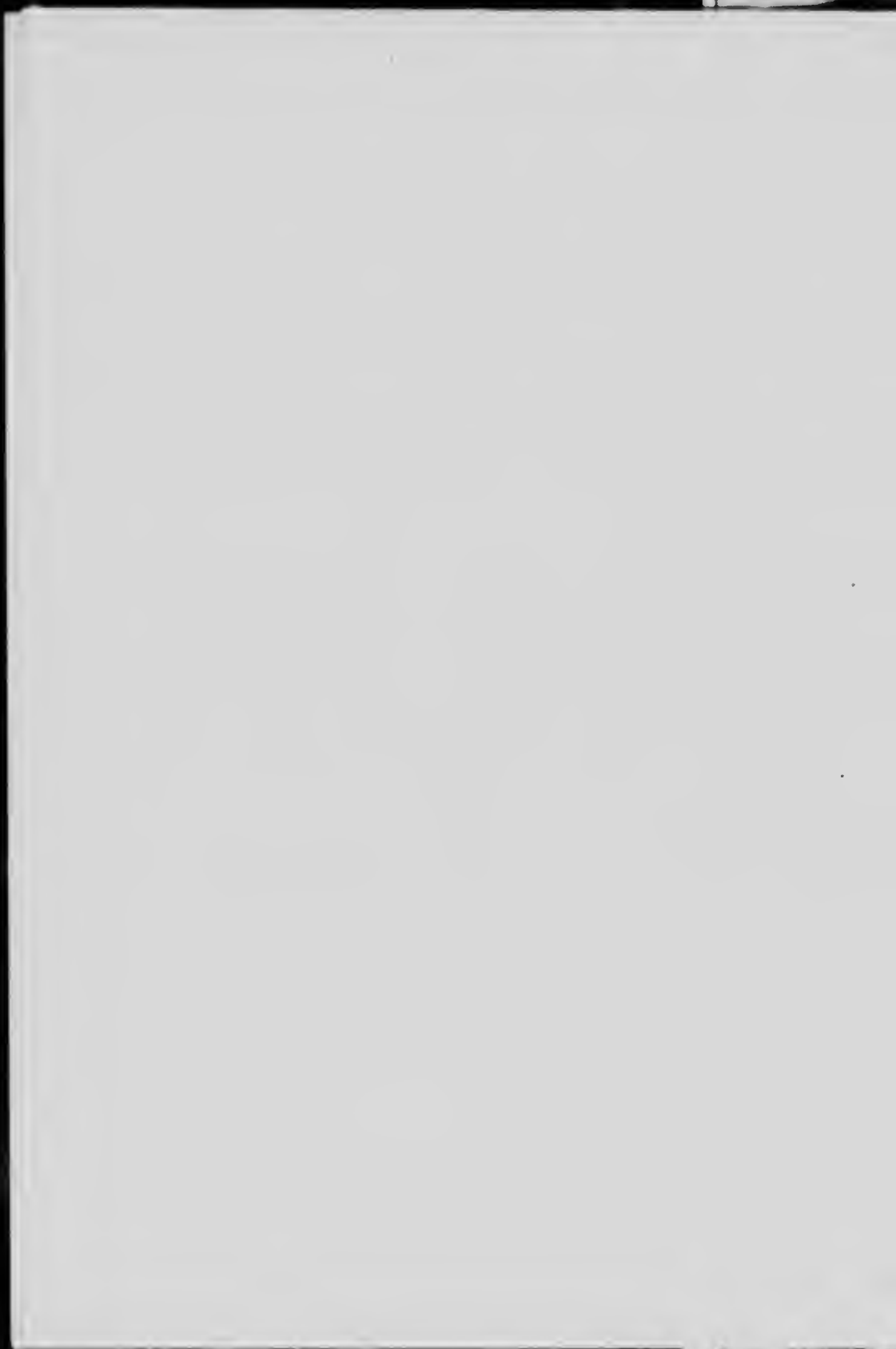
The species marked \* are represented in the Provincial Museum collection, and it is to be hoped collectors of the Province will do what they can by sending some of the missing species to help complete the collection.

This list was compiled by my assistant, Mr. E. M. Anderson.

FRANCIS KERMODE,  
*Curator, Provincial Museum.*

*Victoria August, 1904.*





## BRITISH COLUMBIA LEPIDOPTERA.

## ORDER LEPIDOPTERA.

## SUPERFAMILY PAPILIONOIDEA.

## FAMILY PARNASSIDÆ.

PARNASSIUS (*Latreille*). The Parnassiids.

- |                                      |                                 |
|--------------------------------------|---------------------------------|
| *1. <i>clodius</i> <i>Men.</i>       | Victoria, Wellington, Vancouver |
| *2. <i>smithiens</i> <i>Dy. Hor.</i> | Osoyoos.                        |
| 3. <i>hermodor</i> <i>Hg. Edr.</i>   | Stickeen River, Kaslo.          |

## FAMILY PAPILIONIDÆ. SWALLOW-TAILS.

IPHICIDES (*Hubner*).

- |                                      |                                |
|--------------------------------------|--------------------------------|
| 4. <i>marcellus</i> <i>Ble. Lec.</i> | Duncan's (one specimen, 1899). |
|--------------------------------------|--------------------------------|

PAPILIO (*Linnaeus*).

- |   |                                      |
|---|--------------------------------------|
| *5. <i>daucus</i> <i>Ble.</i>                               | Vernon, Kaslo, Osoyoos.              |
| *6. <i>eurymedon</i> <i>Ble.</i>                            | Victoria, Vernon, Kaslo, Vancouver.  |
| *7. <i>rutulus</i> <i>Ble.</i> (Common Tiger Swallow-tail.) | Victoria, Vancouver, Atlin.          |
| 8. <i>arizonensis</i> <i>Edr.</i>                           | Vancouver (R. V. Harvey), Kaslo.     |
| 9. <i>turnus</i> <i>Linna.</i> (Tiger Swallow-tail.)        | Vernon.                              |
| *10. <i>oregonia</i> <i>Edr.</i>                            | Vernon.                              |
| *11. <i>zolicon</i> <i>Ble.</i>                             | Victoria, Wolfson, Vancouver, Kaslo. |

## FAMILY PTERIDÆ. SULPHURS AND WHITES.

NEOPHESIA (*Behr*).

- |                                  |                                     |
|----------------------------------|-------------------------------------|
| *12. <i>menapia</i> <i>Fchl.</i> | Victoria, Vancouver, Vernon, Kaslo. |
|----------------------------------|-------------------------------------|

POSTIA (*Fabricius*). Whites.

- |  |                                      |
|--|--------------------------------------|
| *13. <i>beckeri</i> <i>Edr.</i> (Becker's White.)      | Vernon, Osoyoos, Kaslo.              |
| *14. <i>sisymbri</i> <i>Ble.</i> (California White.)   | Vernon, Kaslo.                       |
| *15. <i>occidentalis</i> <i>Reak.</i> (Western White.) | Victoria, Vancouver, Osoyoos, Kaslo. |
| 16. <i>calyce</i> <i>Edr.</i>                          | Kaslo.                               |

- \*17. *napi Linn.* (Mustard White.) Victoria.  
 18. *bryoniae Ochr.* (Alpine White.) Kaslo.  
 \*19. *venosa Scud.* (Veined White.) Victoria, Vancouver, Kaslo.  
 20. *oleracea Harr.* Vancouver.  
 \*21. *pallida Scud.* Victoria, Kaslo.  
 22. *eastoria Reak.* Vancouver.  
 \*23. *rape Linn.* Province at large.

SYNCHLOE (*Lubner*). Orange-tips.

24. *creusa Dy-Hew.* Kaslo.  
 \*25. *ausonides Bdr.* Victoria, Vernon, Kaslo, Stickeen R.  
 \*26. *sara Bdr.* Victoria, Kaslo.  
 \*27. *reakirtii Edw.* (Reakirt's Orange-tip.) Victoria, Vernon, Kaslo.

EURYMUS (*Swainson*). Sulphurs.

- \*28. *heela Lef.* Atlin.  
 \*29. *eurytheme Bdr.* Victoria, Vancouver, Vernon, Kaslo.  
 \*30. *ariadne Edw.* Victoria, Vancouver.  
 \*31. *eriphyle Edw.* Agassiz, Kaslo.  
 \*32. *hartfordii Hy. Edw.* Osoyoos.  
 \*33. *occidentalis Scud.* Victoria, Wellington, Vancouver, Vernon, Kaslo.  
 \*34. *emilia Edw.* Osoyoos.  
 \*35. *interior Scud.* (Pink-edged Sulphur.) Osoyoos, Kaslo.

FAMILY NYMPHALIDÆ. NYMPHS.

ARGYNNIS (*Fabricius*). The Fritillaries, the Silver Spots.

- \*36. *leto Behr.* Vernon, Kaslo.  
 37. *lais Edwards.* (Northwestern Silver-spot.) Rocky Mountains, Golden.  
 \*38. *oweni Edwards.* (Owen's Silver-spot.) Osoyoos.  
 \*39. *electa Edwards.* Osoyoos, Kaslo.  
 40. *columbia Hy. Edwards.* (Columbian Silver-spot.) Osoyoos.  
 \*41. *bremnerii Edwards.* (Bremner's Silver-spot.) Victoria, Wellington, Vernon.  
 42. *monticola Behr.* (Behr's Fritillary.) Kaslo (J. C.), doubtful species.  
 \*43. *rhodope Edwards.* Goldstream, Wellington, Vancouver, Kaslo.  
 44. *behrensii Edwards.* Kaslo.  
 \*45. *coronis Behr.* Vernon, Osoyoos.  
 \*46. *nevadensis Edwards.* (Nevada Fritillary.) Osoyoos, Vernon.

- \*47. *chitone Edwards.* Kaslo, Osoyoos.  
 \*48. *eurynome Edwards.* Kaslo, Osoyoos.  
 \*49. *clio Edwards.* Kaslo, Osoyoos.

BRENTHIS (*Hubner*).

- \*50. *myrina Cramer.* (Silver-bordered  
 Fritillary. Lausdowne.  
 \*51. *andersonii Dyar.* (New species.) Revelstoke; rare (E. A.).  
 \*52. *chariclea Schrank.* Mount Cheam (R. V. H.).  
 53. *boisduvalii Dupouchel.* Rocky Mountains.  
 \*54. *freiya Thunberg.* (Lapland  
 Fritillary.) Osoyoos.  
 55. *frigga Thun.* Osoyoos.  
 \*56. *bellona Fab.* (Meadow  
 Fritillary.) Osoyoos, Kaslo.  
 \*57. *epithore Bdr.* Victoria, Vancouver, Vernon, Kaslo.

LEMONIAS (*Hubner*). Checker-spots.

- \*58. *cooperi Behr.* (Cooper's Checker-  
 spot. Victoria, Goldstream.  
 \*59. *macglashani Rivers.* (Macglas-  
 han's Checker-spot.) Goldstream (Mt. Skirt).  
 60. *anicia Dy.-Hew.* Vernon (E. P. Venables).  
 \*61. *beani Skinner.* (Bean's Checker-  
 spot. Kaslo (J. Cockle).  
 62. *nubigena Behr.* (Clouded  
 Checker-spot.) Victoria.  
 \*63. *baroni Edw.* (Baron's Checker-  
 spot.) Osoyoos.  
 \*64. *taylori Edw.* (Taylor's Checker-  
 spot. Victoria.  
 65. *editha Bdv.* Kaslo (J. Cockle).  
 66. *palla Bdv.* (Northern Checker-  
 spot.) Kaslo.  
 \*67. *whitneyi Behr.* (Whitney's  
 Checker-spot.) Vernon, Kaslo, Osoyoos.

THESSALIA (*Scudder*).

68. *leanira Bdv.* Kaslo.

PHYCIODES (*Hubner*). Crescent-spots.

- \*69. *tharos Drury.* (Pearl Crescent.) Victoria, Vernon, Kaslo.  
 \*70. *pratensis Behr.* Meadow Victoria, Vancouver, Vernon, Kaslo,  
 Crescent. Osoyoos.  
 \*71. *mylitta Edw.* (Mylitta Crescent.) Vancouver, Vernon, Kaslo, Osoyoos.  
 \*72. *barnesi Skinner.* (Barne's  
 Crescent-spot.) Osoyoos.

POLYGOXIA (*Hubner*). Angle-Wings.

- \*73. marsyas *Edw.* (The Satyr.) Province at large (common).  
 74. hylas *Edw.* (Colorado Angle-wing.) Tagish Lake (Koontz Can. Ent.).  
 \*75. faunus *Edw.* (The Fawn, The Green Comma.) Vict., Vancouver, Illecillewaet, Kaslo.  
 \*76. zephyrus *Edw.* (Zephyr.) Kaslo, Stickeen.  
 77. gracilis *G. & R.* (The Graceful Angle-wing.) Tagish Lake (Koontz Can. Ent.).  
 \*78. silenus *Edw.* Victoria, Wellington, Vancouver.  
 \*79. progne *Cram.* Osoyoos.

EUGONIA (*Hubner*). Tortoise-shells.

- \*80. j.-album *Bdr.-Lee.* (Compton Tortoise.) Enderby.  
 \*81. californica *Bdr.* (California Tortoise-shell.) Victoria, Vancouver, Kaslo.

EUVANESSA (*Scudder*).

- \*82. antiopa *Linn.* (Camberwell Beauty.) Province at large (common Victoria).

AGLAIS (*Dalman*).

- \*83. milberti *Godart.* (Milbert's Tortoise-shell.) Victoria, Vancouver, Osoyoos.  
 84. subpallida *Cockerell.* Kaslo.

VANESSA (*Fabricius*).

- \*85. atalanta *Linn.* (Red Admiral.) Province at large.  
 86. huntera *Fabr.* (Hunter's Butterfly.) Victoria, A. W. Hanham; Kaslo, J. Cockle.  
 \*87. cardui *Linn.* (Painted Lady.) Province at large.  
 \*88. carye *Hub.* (West Coast Lady.) Victoria, Vancouver, Kaslo.

BASILARCHIA (*Scudder*). White Admirals.

- \*89. archippus *Cram.* (Viceroy.) Victoria, Kaslo.  
 \*90. lorquini *Bdr.* (White Admiral.) Province at large (common).

## FAMILY AGAPETIDÆ. THE WOOD-NYMPHS.

CERCYONIS (*Speyer*).

- \*91. boopis *Behr.* Osoyoos.  
 \*92. nephele *Kirby.* Vancouver (E. Wilson).  
 \*93. baroni *Edw.* Osoyoos.

- \*94. *gabbii* *Edw.* (Gabb's Satyr.) Osoyoos.  
 \*95. *paulus* *Edw.* (Small Wood-  
 Nymph.) Osoyoos.  
 \*96. *charon* *Edw.* (Dark Wood-  
 Nymph.) Osoyoos, Kaslo.

EREBIA (*Dalman*). The Alpines.

- \*97. *discoidalis* *Kirby*. (Red-streaked  
 Alpine.) Atlin.  
 98. *disa* *Thun.* (Alaskan Alpine.) Cheam Peak (A. Bush).  
 \*99. *vidleri* *Elwes*. (Vidler's Alpine.) Cheam Peak (R. V. Harvey).  
 \*100. *episodesa* *Butler*. (Common  
 Alpine.) Vernon, Kaslo.

NEOMINOIS (*Scudder*).

- \*101. *ridingsii* *Edw.* (Riding's Satyr.) Golden, Rocky Mountains.

CENONYMPIA (*Hübner*). The Ringlets.

102. *californica* *Dby. Hew.* (Cali-  
 fornia Ringlet.) Vancouver Island (H. Iland).  
 \*103. *ampelos* *Edwards*. (Ringless  
 Ringlet.) Victoria, Vernon.  
 104. *ochracea* *Edw.* (Ochre Ringlet.) B. C. (Holland).

CENEIS (*Hübner*).

- \*105. *nevadensis* *Feld. (gigas) Butler*. Goldstream, Wellington.  
 \*106. *chryxus* *Dby.-Hew.* Kaslo.  
 \*107. *alaskensis* *Holland*. Atlin.  
 \*108. *brucei* *Edw.* (Bruce's Arctic.) Atlin.

FAMILY LYMNADIDÆ. HAIR-STREAKS, COPPERS AND BLUES.

ANOSIA (*Hübner*).

- \*109. *plexippus* *Linnaeus*. (Monarch.) Victoria, Vancouver, Vernon.

FAMILY LYCÆNIDÆ.

URANOTES (*Scudder*).

- \*110. *melinus* *Hüb.* (Common Hair-  
 streak.) Province at large (common).

THECLA (*Fabricius*). Hair-streaks.

111. *acadica* *Edw.* Vancouver Island (Holland).  
 \*112. *californica* *Edw.* Vancouver Island, Kaslo.

- \*113. *scipium* *Bdv.* (Hedge Row Hair-streak.) Kaslo, Osoyoos.  
 114. *nelsonii* *Bdv.* (Nelson's Hair-streak.) Vancouver, Wellington, Kaslo.  
 \*115. *spinetorum* *Bdv.* (Thicket Hair-streak.) Fairview, Kaslo.  
 \*116. *blenina* *Hew.* (Hewitson's Hair-streak.) Victoria (E. M. A.)

CALLIPSYCHE (*Scudder*).

- \*117. *behrii* *Edw.* (Behr's Hair-streak.) Osoyoos.

INCISALIA (*Minot*).

118. *augustus* *Kirby.* (Brown Elfin.) Kaslo (J. Cockle).  
 \*119. *iroides* *Bdv.* Victoria, Vancouver, Kaslo.  
 \*120. *irus* *Godart.* (Hoary Elfin.) Victoria, Vancouver, Osoyoos.  
 121. *mossi* *Hg. Edw.* Vancouver Island (Dyar's Cat.)  
 \*122. *eryphon* *Bdv.* Enderby, Kaslo.

CALLOPHRYS (*Billberg*).

- \*123. *affinis* *Edw.* (Green-winged Hair-streak.) Osoyoos.  
 \*124. *dumetorum* *Bdv.* (Green-winged Spotted Hair-streak.) Osoyoos.

STRYMON (*Hubner*).

- \*125. *titus* *Fab.* (Coral Hair-streak.) Enderby.

EPIDEMIA (*Scudder*). The Coppers.

- \*126. *mariposa* *Reak.* (Reakirt's Copper.) Mt. Arrowsmith, V.I., Kaslo.  
 \*127. *zerce* *Bdv.* Kaslo, Osoyoos.  
 \*128. *helooides* *Bdv.* (Purplish Copper.) Province at large (common).  
 129. *florus* *Edw.* Kaslo.  
 130. *epixanthe* *Bdv.-Lc.* Rocky Mountains.

CHALCERIA (*Scudder*).

- \*131. *snowi* *Edw.* Golden.

SATYRIUM (*Scudder*).

- \*132. *fuliginosa* *Edw.* Osoyoos.

CUPIDO (*Schrank*). The Blues.

- \*133. *heteronea* *Bdv.* (Varied Blue.) Kaslo, Osoyoos.  
 \*134. *fulla* *Edw.* Kaslo.  
 135. *icarioides* *Bdv.* (Boisduval's Blue.) Kaslo.  
 \*136. *sepiolus* *Bdv.* Victoria, Vancouver, Kaslo.  
 \*137. *pheres* *Bdv.* Shawnigan, V.I., Vernon.

NOMIADES (*Hubner*).

- \*138. *antiacis* *Bdv.* (Eyed Blue.) Victoria, Kaslo, Vernon, Stikine.  
 139. *couperii* *Grt.* (Couper's Blue.) Rocky Mountains.

PHÆDROTES (*Scudder*).

- \*140. *sagittigera* *Feld.* Osoyoos.

AGRIADES (*Hubner*).

141. *podarce* *Feld.* Kaslo.  
 142. *aquilo* *Bdv.* Mt. Cheam (Fletcher).

RUSTICUS (*Hubner*).

- \*143. *battoides* *Behr.* (Behr's Blue.) Kaslo.  
 \*144. *melissa* *Edw.* (Orange-margined Blue.) Wellington, Kaslo.  
 \*145. *scudderi* *Edw.* (Scudder's Blue.) Osoyoos.  
 \*146. *acmon* *Dby.-Hew.* Kaslo, Vernon.  
 147. *anna* *Edw.* Kaslo.

CYANIRIS (*Dalman*).

148. *ladon* *Cram.* (Common Blue.) Kaslo (J. Cockle).  
 \*149. *violacea* *Edw.* Victoria, Vancouver.  
 \*150. *neglecta* *Edw.* Victoria, Vancouver, Osoyoos.  
 151. *nigrescens* *Bd.-Lec.* (The Kaslo Blue.) Kaslo (J. Cockle).

EVERES (*Hubner*). The Tailed Blues.

- \*152. *amyntula* *Bdv.* (Western Tailed Blue.) Victoria, Wellington, Vancouver, Vernon, Kaslo.  
 \*153. *comyntas* *Gdt.* (Eastern Tailed Blue.) Stikine, Osoyoos, Kaslo.

## FAMILY HESPERIIDÆ. THE SKIPPERS.

AMBLYSCIRTES (*Scudder*).

- \*154. *vialis* *Edw.* (Roadside Skipper.) Vancouver, Kaslo, Osoyoos.



PAMPHILA (*Fabricius*)

155. *palemon Pallas.* (Arctic Skipper.) Vancouver, Kaslo, Osoyoos.

OARISMA (*Scudder*).

- \*156. *garita Reak.* Kaslo, Vernon.

ATRYTONE (*Scudder*).

157. *hobomok Harr.* Osoyoos.

ERYNNIS (*Schrank*).

- \*158. *comma Linn.* Kaslo.  
 \*159. *nevada Scud.* Victoria, Duncan, Vernon.  
 \*160. *manitoba Scud.* (Canadian Skipper.) Goldstream, Kaslo.

ANTHOMASTER (*Scudder*).

161. *sylvanoides Bdr.* (Woodland Skipper.) Rocky Mountains.  
 \*162. *agricola Bdr.* Province at large.

THYMELICUS (*Hubner*).

- \*163. *cernes Bdr.-Lec.* Kaslo, Vernon.

EUCHYES (*Scudder*).

- \*164. *vestris.* Goldstream.  
 165. *metacomet.* Vancouver.

EPARGYREUS (*Hubner*).

166. *tityrus Fab.* (Silver-spotted Skipper.) Vancouver, Howe Sound, Glacier.

THORYBES (*Scudder*).

- \*167. *pylades Scud.* (Northern Dusky-wing.) Goldstream, V. I., Kaslo.

PHOLISORA (*Scudder*).

- \*168. *catullus Fab.* (Sooty-wing.) Vernon, Kaslo, Osoyoos.

THANAOS (*Boisduval*).

- \*169. *icelus Lint.* (Dreamy Dusky-wing.) Province at large (common).

170. *persius* *Sund.* (Persius' Dusky-wing.) Kaslo (J. Cockle).  
 \*171. *propertius* *Liat.* Victoria (common).  
 172. *lilius* *Dyar.* (New species.) Kaslo (Dyar), 1903.

HESPERIA (*Fabricius*).

- \*173. *tessellata* *Sund.* Osoyoos, Enderby.  
 \*174. *montivaga* *Reak.* (Checkered Skipper.) Kaslo.  
 \*175. *caspitalis* *Bdr.* (Two-banded Skipper.) Island and Mainland.

SUB-ORDER HETEROCERA. MOTUS.

FAMILY SPHINGIDÆ. HAWK MOTUS.

HEMARIS (*Dalman*).

176. *difinis* *Bdr.* (Snowberry Clearwing.) New Westminster (D. Jones).  
 \*177. *thetis* *G. & R.* (Thetis Clearwing.) Victoria, Kaslo.  
 178. *cynoglossum* *Hg. Edw.* New Westminster (D. Jones).  
 179. *thysbe* *Fab.* (Hummingbird Clearwing.) New Westminster (D. Jones).

LEPISIA (*Grote*).

180. *flavofasciata* *Wlk.* (Yellow-banded Day-sphinx.) Kaslo.  
 181. *ulalume* *Strk.* Vancouver, New Westminster, Kaslo.  
 \*182. *clarkiae* *Bdr.* (Clark's Day-sphinx.) Victoria, Goldstream (E. A.).

DEILEPHILA (*Ochsenheimer*).

- \*183. *gallii* *Rott.* (Galium Sphinx.) Generally distributed.  
 \*184. *lineata* *Fab.* (Striped Morning Sphinx.) Victoria, Vancouver, Kaslo.

SPHIX (*Linnaeus*).

- \*185. *vancouverensis* *Hg. Edw.* (Vancouver Sphinx.) Victoria, Wellington, Kaslo.

MARUMBA (*Moore*).

186. *modesta* *Moore.* (Big Poplar Sphinx.) New Westminster, Kaslo.

SMERINTHUS (*Latreille*).

187. *cerysii Kirby*. (Cerisy's Sphinx.) Kaslo.  
 \*188. *ophthalmicus Bdr.* Victoria, Vancouver, Kaslo.

PAONIAS (*Hubner*).

189. *excacatus Smith & Abbot*.  
 (Blinded Sphinx.) Vancouver, Kaslo.  
 \*190. *myops Smith & Abbot*. (Small-  
 eyed Sphinx.) Victoria (E. A.), Kaslo (J. C.).

## SUPERFAMILY SATURNOIDEA.

## FAMILY SATURNIIDÆ.

SAMIA (*Hubner*).

- \*191. *cecropia Linn.* (Cecropia Moth.) Victoria (not local).

CALLOSAMIA (*Packard*).

- \*192. *promethia Drury*. (Spice-  
 brush Silk-moth.) Victoria.

TELEA (*Hubner*).

- \*193. *polyphemus Cramer*. (Poly-  
 phemus Moth.) Generally distributed.

THAUMA (*Hy. Edwards*).

194. *socialis Feist*. B. C. ? (Dyar's Catalogue.)

PSEUDOHAZIS (*Grote & Robinson*).

- \*195. *eglanterina Bdr.* (Sheep Moth.) Shawnigan Lake (E. A.), Kaslo (J.C.).  
 196. *shastansis Behr.* Kaslo.

## SUPERFAMILY BOMBYCOIDEA.

## FAMILY SYNTOMIDÆ.

SCEPSIS (*Walker*).

197. *cockleyi Dyar*. New variety.  
 (Space Moth.) Kaslo (J. Cockle).

LYCOMORPHA (*Harris*).

198. *pholus Drury*. New Westminster (D. Jones).

CTENUCHA (*Kirby*).

199. *virginica Charpr.* (Virginian  
Ctenucha.) New Westminster (D. J.).

## FAMILY LITHOSIIDÆ.

CRAMBIDIA (*Packard*).

200. *casta Sanborn.* (Pearly-winged  
Lichen Moth.) Kaslo, Revelstoke.

LEXIS (*Wallengren*).

201. *bicolor Grote.* (Yellow-edged  
Lexis.) Kaslo (J. C.).

HYPOPREPIA (*Hubner*).

- \*202. *miniata Kirby.* (Scarlet-winged  
Lichen Moth.) Kaslo (H. G. Dyar, 1903).

CLEMENSIA (*Packard*).

203. *albata Pack.* (Little White  
Lichen Moth.) Victoria (A. W. Hanham), Kaslo  
(J. C.).

## FAMILY ARCTIIDÆ. TIGER MOTHS.

LEPTARCTIA (*Stretch*).

- \*204. *californiæ Walker.* Victoria, Goldstream, Kaslo.  
\*205. *decia Bdr.* Victoria, Goldstream.  
\*206. *dimidiata Stretch.* Victoria, Saanich (E. A.)

ESTIGMENE (*Hubner*).

207. *acraea Drury.* (Acraea Moth.) New Westminster (D. J.)

HYPHANTRIA (*Harris*).

- \*208. *textor Harris.* (Spotless Fall  
Web-worm Moth.) Victoria, Wellington, Vancouver.

ISIA (*Walker*).

- \*209. *isabella A. & S.* (Isabella Tiger  
Moth.) Generally distributed (not common).

DIACRISIA (*Hubner*).

- \*210. *virginica Fab.* (Virginian Tiger  
Moth.) Generally distributed (common).

211. *danbyi* *Neum.* Victoria (rare).  
 \*212. *vagens* *Ble.* (Wandering Di- Goldstream (E. A.).  
       *erisia*.) Kaslo.  
 \*213. *rufula* *Ble.* Kaslo.  
 \*214. *kasloa* *Dyar.* (New species.) Kaslo.

NEOARCTIA (*Neumogen* & *Dyar*).

215. *yarrowi* *Stretch.* (Yarrow's Cheam Peak (Wilson).  
       Tiger Moth.)

HYPHORAIA (*Hubner*).

216. *parthenos* *Harris.* (St. Kaslo (J. C.).  
       Lawrence Tiger Moth.)

PLATYPREPIA (*Dyar*).

- \*217. *virginalis* *Bav.* (Rauchman's Victoria, Kaslo.  
       Tiger Moth.)

APANTESIS (*Walker*).

218. *mielabo* *Grote.* (Miellabo Moth.) Kaslo (rare).  
 \*219. *parthenice* *Kirby.* (Parthenice Victoria.  
       Moth.)  
 \*220. *achaia* *Grote.* (Achaia Moth.) Victoria, Kaslo.  
 221. *quensellii* *Paykull.* (Labrador Apantesis.) Kaslo.  
 \*222. *superba* *Stretch.* Victoria (E. A.)

PARASEMIA (*Hubner*).

223. *plantaginis* *Linn.* (Small Tiger Cheam Peak (R. V. H.).  
       Moth.)

ARCTIA (*Schrank*).

- \*224. *caia* *Linn.* (Great Tiger Moth.) Victoria, Wellington, Vancouver.

AMMALO (*Walker*).

225. *tenera* *Hub.* New Westminster, Kaslo.

HALISIDOTA (*Hubner*).

- \*226. *angulifera* *Walker.* Generally distributed.

EUSCHRAUSIA (*Dyar*).

- \*227. *argentata* *Park* (Silver-spotted Halisidota.) Kaslo (Dyar).  
 \*228. *subalpina* *French.* Victoria, Vancouver.

*ÆMILIA* (Kirby.)

229. *roseata* *Wlk.* (Rosy *Æmilin* Vancouver.

## FAMILY AGARISTIDÆ.

*ANDROLOMA* (Grote.)

- \*230. *mac-cullochii* *Kirby.* (*Mac-*  
Culloch's Forester.) Goldstream, Mt. Cheam, Kaslo.

*ALYPIA* (Hubner.)

231. *ridingii* *Grote.* (Riding's  
Forester.) Atlin.  
\*232. *langtonii* *Couper.* Generally distributed.

## SUPERFAMILY NOCTUINÆ.

## FAMILY NOCTUIDÆ.

*PANTHEA* (Hubner.)

- \*233. *artlandia* *Grote.* (Wester.  
Panthea.) Victoria, Vancouver, Kaslo.  
234. *gigantea* *French.* (Giant  
Panthea.) Kaslo.

*RAPHIA* (Hubner.)

235. *frater* *Grote.* (The Brother). Kaslo (J. C.).

*APATELA* (Hubner.)

- \*236. *hesperida* *Smith.* Victoria, Vancouver, Kaslo.  
\*237. *felina* *Grote.* The Dandy. Victoria, Kaslo.  
238. *canadensis* *Smith & Dyar.* Kaslo.  
239. *moesta* *Dyar.* Kaslo.  
240. *griseor* *Dyar.* Hatzie, Kaslo.  
241. *radcliffei* *Harrey.* Kaslo.  
242. *quadrata* *Grote.* (Quadrata  
Dagger.) Victoria  
\*243. *funeralis* *Grote.* Victoria (E. A.).  
244. *fragilis* *Guenée.* (Fragile  
Dagger-moth.) Victoria (G. W. T.).  
245. *minella* *Dyar.* Kaslo.  
\*246. *revellata* *Smith.* Generally distributed.  
247. *mansueta* *Smith.* Kaslo.  
248. *ovata* *Grote.* Agassiz (R. V. H.).  
249. *dolorosa* *Dyar.* Kaslo.  
\*250. *perdita* *Grote.* Victoria (E. A.), Rossland.

251. *emaculata* *Smith.* Kaslo.  
 252. *illita* *Smith.* Kaslo.  
 \*253. *oblinita* *S. & A.* (Sheared) Victoria, Vancouver.  
           *Dagger.*
- MEROLONCHE (*Grote.*)
254. *Impini* *Grote.* (Lupine Dagger.) Kaslo (J. C.).
- CERMA (*Hubner.*)
- \*255. *olivacea* *Smith.* Victoria (E. A.).
- HADENELLA (*Grote.*)
256. *tonsa* *Grote.* Kaslo.
- PLATYPERIGEA (*Smith.*)
- \*257. *praeceuta* *Smith.* Victoria (E. A.), Kaslo (J. C.).  
 258. *anotia* *Dyar.* (New species.) Revelstoke.
- CARADRINA (*Ochsenheimer.*)
259. *meralis* *Morr.* (Mooned Rustic.) Kaslo (J. C.).  
 260. *extimia* *Wlk.* (Civil Rustic.) Victoria, Kaslo.  
 \*261. *miranda* *Gt.* Victoria, Kaslo.  
 262. *nitens* *Dyar.* (New species.) Kaslo.
- PERIGEA (*Guenée.*)
263. *veterata* *Smith.* Kaslo (J. C.).  
 264. *niveirena* *Harvey.* B. C. (Dyar's Cat. No. 1135.)
- OLIGIA (*Hubner.*)
265. *festivoides* *Guenée.* (Festive Midget.) Kaslo.  
 266. *rubiginosa* *Wlk.* B. C. (Dyar's Cat., No. 1144.)
- HADENA (*Schrank.*)
267. *evelina* *French.* Vancouver (R. V. H.)  
 268. *transfrons* *Neum.* (Neumogen's Hadena.) B. C. (Dyar's Cat., No. 1150.)  
 \*269. *claudens* *Walker.* (Dark-winged Hadena.) Victoria (E. A.), rare.  
 \*270. *binotata* *Walker.* Victoria (E. A.), common.  
 271. *curvata* *Grote.* Kaslo.  
 \*272. *indirecta* *Grote.* Victoria, Vancouver, Wellington.  
 \*273. *divesta* *Grote.* Victoria, Kaslo.  
 274. *sora* *Smith.* Kaslo.

275. *allecto* *Smith*. B. C. (Dyar's Cat., No. 1198).  
 276. *versuta* *Smith*. Kaslo.  
 \*277. *cerviana* *Smith*. Victoria (E. A.), Kaslo (J. C.)  
 278. *longula* *Grote*. Kaslo.  
 279. *remissa* *Hubner*. Kaslo.  
 280. *sulfusca* *Morr*. Wellington, Kaslo.  
 \*281. *vultuosa* *Grote*. (Airy *Hadena*.) Victoria, Kaslo.  
 282. *apaniformis* *Guenée*. Kaslo (J. C.).  
 \*283. *lateritia* *Hubner*. (Red-winged  
*Hadena*.) Kaslo.  
 284. *cogitata* *Smith*. Victoria, Vancouver, Kaslo.  
 \*285. *plutonia* *Grote*. Victoria (E. A.)  
 286. *ducta* *Grote*. (Speckled-Gray  
*Hadena*.) Kaslo.  
 287. *impulsa* *Guenée*. Kaslo.  
 \*288. *devastatrix* *Brace*. (Destroying  
*Hadena*.) Gen. distributed (common).  
 \*289. *arctica* *Bdv.* (North'n *Hadena*.) Victoria, Kaslo.  
 \*290. *albina* *Grote*. Victoria (E. A.)  
 \*291. *pluviosa* *Walker*. Victoria, Vancouver, Kaslo.  
 \*292. *cinifacta* *Grote*. Victoria (E. A.)  
 293. *relecina* *Morr*. Kaslo.  
 294. *lignicolor* *Guenée*. (Wood-  
 colored *Hadena*.) Kaslo.  
 295. *genialis* *Grote*. Kaslo.  
 296. *maida* *Dyar*. Kaslo (Dyar, 1903).

POLIA (*Hubner*).

- \*297. *epichysis* *Grote*. Victoria (E. A.), Kaslo (J. C.).  
 298. *medialis* *Grote*. New Westminster, Kaslo.  
 \*299. *contadina* *Smith*. Victoria.  
 300. *sansar* *Stek*. Kaslo.

DRYOBOTA (*Ledeyer*).

301. *illocata* *Walker*. (Wandering  
 Dryobota.) Victoria, Wellington, N. Westm'r.

HYPPA (*Duponchel*).

302. *xylinoidea* *Guenée*. (Common  
 Hyppa.) Kaslo (J. C.).  
 303. *indistincta* *Smith*. Kaslo.  
 \*304. *brunneicrista* *Smith*. Victoria, Vancouver, Kaslo.

FERALIA *Grote*.

- \*305. *columbiana* *Smith*. New species. New Westminster.



MOMOPHANA *Grote.*

306. *comstocki* *Grote.* Victoria, Vancouver, N. Westminster.

VALERIA (*Germer*).

307. *opina* *Grote.* Kaslo.

EUPLEXIA (*Stephens*).

- \*308. *lucipara* *Linm.* Generally distributed.

PYROPHILA (*Hubner*).

309. *pyramidoides* *Guenée.* (American Copper Under-wing.) Rocky Mountains.

HELIOTROPHIA (*Lederer*).

310. *reniformis* *Grote.* Kaslo.

PSEUDANARTA (*Hg. Edwards*).

311. *flava* *Grote.* (Yellow Pseudanarta.) Kaslo.

HOMOHADENA (*Grote*).

312. *fifia* *Dyar.* (New variety.) Kaslo.  
313. *cockleyi* *Dyar.* (New species.) Ainsworth.

ONCOCNEMIS (*Lederer*).

314. *hayesi* *Grote.* B. C. (Dyar's Cat., No. 1324).  
315. *chandleri* *Grote.* (Chandler's Oncocnemis.) Kaslo.  
316. *extremis* *Smith.* B. C. (Dyar's Cat., No. 1340).  
317. *pudorata* *Smith.* B. C. (Dyar's Cat., No. 1353).  
318. *viriditincta* *Smith.* B. C. (Dyar's Cat., No. 1354).  
319. *barnesii* *Smith.* Kaslo (J. C.).  
\*320. *cibalis* *Grote.* (Gray Oncocnemis.) Victoria (E. A.)

RHYNCHAGROTIS (*Smith*).

321. *gilypeennis* *Grote.* (Catocaline Dart Moth.) Kaslo.  
\*322. *rufipectus* *Morr.* (Red-breasted Dart Moth.) Kaslo.  
323. *minimalis* *Grote.* (Lesser Red Dart Moth.) Kaslo.

324. *anchocelioides Guenee.* Kaslo.  
 \*325. *placida Grote.* (Placid Dart  
Moth.) Victoria (G. W. T.).  
 \*326. *variata Grote.* Victoria (E. A.), Kaslo (J. C.).  
 \*327. *alternata Grote.* (Greater  
Red Dart Moth.) Kaslo.  
 328. *trigona Smith.* Kaslo.  
 \*329. *formalis Grote.* Victoria (E. A.), Vancouver (R. V. H.).  
 \*330. *lutula Grote.* Victoria (E. A.).  
 331. *confusa Smith.* Victoria, Kaslo.  
 \*332. *costata Grote.* Victoria, Vancouver, Kaslo.  
 333. *scopeops Dyar.* Kaslo.

ADELPHAGROTIS (*Smith*).

334. *stellaris Grote.* Victoria (R. V. H.).  
 \*335. *indeterminata Walker.* Kaslo.  
 \*336. *prasina Fab.* (Green-winged  
Dart Moth.) Victoria, Vancouver, Kaslo.  
 \*337. *apposita Grote.* Wellington (G. T.), Kaslo (Dyar).

PLATAGROTIS (*Smith*).

- \*338. *pressa Grote.* (Dappled Dart.) New Westminster, Victoria, Kaslo.

EVERETAGROTIS (*Smith*).

- \*339. *perattenta Grote.* (Two-spot  
Dart.) Kaslo.

ABAGROTIS (*Smith*).

- \*340. *erratica Smith.* Kaslo.

PACHSOBIA (*Guenee*).

341. *salicarum Walker.* (Willow  
Pachnobia.) Kaslo.

METALEPSIS (*Grote*).

- \*342. *cornuta Grote.* Victoria, Wellington, Vancouver.

SETAGROTIS (*Smith*).

- \*343. *vernilis Grote.* Kaslo.  
 344. *infimatis Grote.* Victoria, Wellington, Kaslo.  
 345. *vocalis Grote.* Kaslo.

AGROTIS (*Obsoletus* (*mer*)).

- \*346. *ypsilon Rott.* (Ypsilon Dart.) Victoria, Vancouver, Kaslo.

PERIDROMA (*Hubner*).

- \*347. *occulta* *Linn.* (Great Gray Dart.) Generally distributed (common).  
 Kaslo.  
 \*348. *subjugata* *Dyar.*  
 349. *nigra* *Smith.* (Great Black Dart.) Kaslo.  
 \*350. *margaritosa* *Haworth.* Kaslo.  
 351. *saucia* *Hubner.* (Common Cut-worm.) Generally distributed (common).

NOCTUA (*Linnaeus*).

- \*352. *baja* *Linn.* Generally distributed.  
 \*353. *esuralis* *Grote.* Victoria (E. A.).  
 354. *bicarnea* *Guenée.* (Pink-spotted Dart.) Kaslo.  
 \*355. *c-nigrum* *Linn.* (Black-letter Dart.) Generally distributed.  
 356. *jucunda* *Wlk.* (Smaller Pinkish Dart.) New Westminster (D. J.).  
 357. *rubifera* *Grote.* Kaslo.  
 \*358. *oblata* *Morr.* (Rosy Dart.) Kaslo.  
 \*359. *rosaria* *Grote.* Kaslo, Victoria.  
 360. *fennica* *Tausch.* (Finland Dart.) Kaslo.  
 361. *plecta* *Linn.* (Flame-shouldered Dart.) Generally distributed.  
 \*362. *collaris* *G. & R.* (Collared Dart.) Victoria, New Westminster.  
 363. *haruspica* *Grote.* (Soothsayer Dart.) Victoria, Kaslo.  
 \*364. *inopinatus* *Smith.* Victoria, Kaslo.  
 365. *sierræ* *Harvey.* Kaslo.  
 \*366. *clandestina* *Harris.* (Clandestine Dart.) Kaslo (J. C.).  
 367. *pyrophiloides* *Harvey.* Kaslo.  
 \*368. *plebeia* *Smith.* Victoria, Vancouver, Kaslo.  
 369. *flavotincta* *Smith.* New Westminster (D. J.).  
 370. *calgary* *Smith.* (Calgary Dart.) Kaslo.  
 \*371. *umbrosa* *Dyar.* (New variety.) Kaslo (Dyar, 1903).

PRONOCYTA (*Smith*).

372. *pyrophiloides* *Harvey.* Kaslo.

CHORIZAGROTIS (*Smith*).

373. *auxiliaris* *Grote.* Kaslo.  
 374. *inconcinna* *Harvey.* Kaslo.  
 375. *balanitis* *Grote.* (Acorn Dart.) Kaslo.

RHIZAGROTIS (*Smith*).

376. *flavicollis* *Smith.* Kaslo (J. C.).

FELTIA (*Walker*).

- \*377. *subgothica* *Haworth*. (Sub-  
gothic *Dart*.) Generally distributed.  
\*378. *herilis* *Grote*. (*Master's Dart*.) Vancouver, Kaslo.  
\*379. *vancouverensis* *Grote*. (*Vancouver Dart*.) Victoria, Vancouver, Kaslo.  
380. *æneipennis* *Grote*. Kaslo.  
381. *volubilis* *Harvey*. (*Voluble Dart*.) Agassiz, Kaslo.

POROSAGROTIS (*Smith*).

- \*382. *catenula* *Grote*. Kaslo.  
383. *satiens* *Smith*. B. C. (*Dyar's Cat.*, No. 1555).  
384. *thanatologia* *Dyar*. (*New species*.) Kaslo.

PARAGROTIS (*Pratt*).

385. *insrtans* *Smith*. B. C. (*Dyar's Cat.*, No. 1576).  
386. *plagigera* *Morr*. Kaslo.  
387. *brocha* *Morr*. Kaslo.  
388. *cogitans* *Smith*. Victoria (G. W. T.).  
389. *perfusea* *Grote*. Kaslo.  
\*390. *punctigera* *Walker*. Kaslo.  
391. *velleripennis* *Grote*. (*Fleece-winged Dart*.) Wellington, Agassiz, Kaslo.  
392. *exculta* *Smith*. B. C. (*Smith's Cat.*, Noctuidæ).  
393. *gagates* *Grote*. Kaslo.  
394. *vulpina* *Smith*. Kaslo.  
395. *vallus* *Smith*. B. C. (*Dyar's Cat.*, No. 1639).  
396. *trifasciata* *Smith*. Kaslo.  
\*397. *messoria* *Harris*. (*Reaper Dart*.) Victoria (E. A.), common.  
398. *incubita* *Smith*. Kaslo.  
399. *terrenus* *Smith*. Kaslo.  
400. *territoralis* *Smith*. Kaslo.  
\*401. *fulda* *Smith*. Sandon, Revelstoke.  
402. *brunneigera* *Grote*. B. C. (*Smith's Cat.*, Noctuidæ).  
403. *rubefactalis* *Grote*. Kaslo.  
404. *incallida* *Smith*. Kaslo.  
405. *lutulenta* *Smith*. (*Muddy Dart*.) Kaslo.  
406. *pallipennis* *Smith*. B. C. (*Dyar's Cat.*, No. 1672).  
407. *murdockii* *Smith*. B. C. (*Dyar's Cat.*, No. 1679).  
408. *friabilis* *Grote*. Kaslo.  
409. *fuscigera* *Grote*. Kaslo.  
410. *atropulverea* *Smith*. Kaslo.  
411. *compressipennis* *Smith*. Kaslo.  
412. *intrita* *Morr*, B. C. (*Dyar's Cat.*, No. 1692).  
\*413. *vetusta* *Walker*. Victoria, Vancouver.

- \*414. *titubatis* *Smith.* (Tippling  
Dart.) Victoria (E. A.).
- \*415. *reuda* *Strk.* Victoria (E. A.).
416. *infausta* *Walker.* Victoria, Wellington, Vancouver.
417. *basiflava* *Smith.* B. C. (Dyar's Cat., No. 1703).
418. *alticola* *Smith.* Kaslo.
- \*419. *satis* *Harrey.* Victoria (E. A.).
- \*420. *insulsa* *Walker.* *decolor* *Morr.*  
(Silly Dart.) Generally distributed.
421. *albipennis* *Grote.* Kaslo
422. *tessellata* *Harris.* (Tessellate  
Dart.) Kaslo.
423. *atristrigata* *Smith.* B. C. (Dyar's Cat., No. 1596).
- \*424. *ochrogaster* *Guenée.* (Yellow-  
bellied Dart.) Kaslo.
425. *idalhoensis* *Grote.* Kaslo.
- \*426. *obeliscoides* *Guenée.* (Obelisk  
Dart.) Victoria, Kaslo.
- \*427. *perexcellens* *Grote.* Victoria, Kaslo.
428. *nordica* *Smith.* B. C. (Dyar's Cat., No. 1732).
429. *colata* *Grote.* Sandou.
- \*430. *divergens* *Walker.* New Westminster, Kaslo.
431. *redimicula* *Morr.* (Fillet Dart.) Kaslo.
432. *piudar* *Smith.* Kaslo.
433. *atrifera* *Grote.* Kaslo.
434. *strigilis* *Grote.* B. C. (Dyar's Cat., No. 1712).
435. *mairnes* *Smith.* Field.
- \*436. *focinus* *Smith.* Kaslo.

ANYTUS (*Grote*).

437. *profundus* *Smith.* Kaslo (J. C.).
438. *evelina* *French.* Kaslo.

UFEUS (*Grote*).

- \*439. *plicatus* *Grote.* (Pleated Ufeus.) Victoria, Goldstream (E. A.).
- \*440. *satyricus* *Grote.* (The Satyr.) Victoria (E. A.), Identified Dr. J.  
Fletcher, 1902.

AGROTIPHILA (*Grote*).

441. *incognita* *Smith.* B. C. (Dyar's Cat., No. 1764.)
442. *maculate* *Smith.* B. C. (Dyar's Cat., No. 1767.)

MAESTRA (*Ochsenheimer*).

- \*443. *discalis* *Grote.* Victoria, Wellington, Kaslo.
444. *nimbosa* *Guenée.* New Westminster, Hartzie.
445. *purpurissata* *Grote.* (Eupurpled  
Maestra.) Victoria (E. A.).

146. *crydina Dyar.* (New variety.) Kaslo.  
 147. *detracta Walker.* (Disparaged  
 Mamestra.) Kaslo.  
 \*148. *liquida Grote.* (Liquid  
 Mamestra.) Victoria (E. A.), Vancouver (R. V. H.).  
 149. *radix Walker.* (Dimmock's  
 Mamestra.) Kaslo.  
 150. *nevade Grote.* (Nevadian  
 Mamestra.) Kaslo.  
 \*151. *subjuncta G. & R.* (Harnessed  
 Mamestra.) Victoria (E. A.).  
 152. *ingravis Smith.* Kaslo (J. C.).  
 \*153. *invalida Smith.* Victoria, Kaslo.  
 154. *grandis Bde.* (Grand Mamestra) Kaslo.  
 \*155. *trifolii Rott.* (Clover Mamestra.) Victoria, Kaslo.  
 156. *oregonica Grote.* Kaslo (J. C.).  
 157. *larissa Smith.* Kaslo.  
 \*158. *picta Harris.* (Painted Mam-  
 estra.) Victoria (E. A.).  
 159. *crisifera Walker.* Vancouver (R. V. H.).  
 \*160. *assimilis Morr.* Victoria, Wellington.  
 \*161. *adjuneta Bde.* (Hitched Mam-  
 estra) Victoria, Kaslo.  
 162. *ligitima Grote.* Victoria, Vancouver.  
 163. *lilacina Harvey.* (Lilacine  
 Mamestra.) New Westminster (D. Jones).  
 \*164. *stricta Walker.* Victoria (E. A.).  
 \*165. *cinnabarina Grote.* Victoria (A. W. Hanham).  
 \*166. *olivacea Morr.* (Olivaceous  
 Mamestra.) Victoria, Kaslo.  
 \*167. *petita Smith.* Victoria, Kaslo.  
 \*168. *comis Grote.* Generally distributed.  
 169. *illaudabilis Grote.* Victoria (E. A.), Kaslo (J. C.).  
 \*170. *cuneata Grote.* Generally distributed (common).  
 \*171. *sutrina Grote.* Victoria, Kaslo (not common).  
 \*172. *loreae Guenée.* (Bridled Mam-  
 estra.) Kaslo.  
 173. *segregata Smith.* B. C. (Dyar's Cat., No. 1849).  
 174. *vicina Grote.* (Allied Mames-  
 tra.) Victoria, Wellington, Kaslo.  
 \*175. *pensilis Grote.* Kaslo.  
 176. *ectrapela Smith.* B. C. (Dyar's Cat., No. 1861.)  
 177. *senatoria Smith.* Kaslo.  
 178. *mutilata Smith.* Sandon (Mr. Currie).  
 179. *tacoma Strecker.* Kaslo (J. C.).

ADMETOVIS (*Grote*).

480. *oxymorus Grote.* Sandon.

BARATURA (*Hübner*).

181. *curialis* *Smith*. Kaslo (J. C.).

DARGIDA (*Walker*).

\*482. *procinctus* *Grote*. Generally distributed.

XYLOMIGES (*Guenée*).

- \*483. *hiemalis* *Grote*. Victoria, Kaslo.  
 \*484. *simplex* *Walker*. (Simple Woodling.) Generally distributed (common).  
 185. *dolosa* *Grote*. (Grieving Woodling.) Kaslo (J. C.).  
 486. *rubrica* *Harvey*. Kaslo (J. C.).  
 \*487. *perlubens* *Grote*. (Brown Woodling.) Generally distributed.  
 \*488. *pulchella* *Smith*. (Beautiful Woodling.) Victoria (E. A.), Wellington (G. W. T.).  
 \*489. *candida* *Smith*. Victoria, Vancouver, Wellington.  
 \*490. *patalis* *Grote*. (Fletcher's Woodling.) Victoria (E. A.). Common.  
 \*491. *cognata* *Smith*. (Oregon Woodling.) Victoria (E. A.).  
 492. *peritalis* *Smith*. Kaslo.  
 \*493. *pallidior* *Smith*. Victoria, Vancouver (R. V. H.).

SCOTOGRAMMA (*Smith*).

494. *submarina* *Grote*. Kaslo.  
 495. *densa* *Smith*. Kaslo.  
 496. *uniformis* *Smith*. Kaslo.  
 497. *luteola* *Smith*. B. C. (Dyar's Cat., No. 1911).  
 498. *inconcinna* *Smith*. Kaslo (J. C.).  
 499. *sedilis* *Smith*. Kaslo.

ANARTA (*Ochsenheimer*).

- \*500. *melanopa* *Thun*. (Black-mooned Anarta.) Cheam, Kaslo, Mt. Arrowsmith.  
 501. *lapponica* *Thun*. Kaslo.  
 502. *zetterstedti* *Staudinger*. Koakanee Mt. (Dyar.)

NEPHELODES (*Guenée*).

- \*503. *pectinatus* *Smith*. Victoria (E. A.).

HELIOPHILA (*Hübner*).

504. *unipuncta* *Harvorth*. (Army Worm.) Kaslo (J. C.).

- \*505. *minorata* *Smith.* (Lesser  
Wainscot.) Victoria, Vancouver.  
506. *oxygale* *Grote.* Vancouver, Kaslo.  
507. *megadia* *Smith.* Kaslo.  
\*508. *heterodoxa* *Smith.* (Heterodox  
Wainscot.) Victoria (E. A.), Kaslo (J. C.).  
\*509. *multilinea* *Walker.* (Many  
lined Wainscot.) Victoria, Vancouver.  
510. *commoides* *Guenée.* (Comma  
Wainscot.) Kaslo.  
511. *calguriana* *Smith.* Victoria (R. V. H.)  
\*512. *roscol* *Smith.* Kaslo.  
513. *fareta* *Grote.* Kaslo.

ZOSTEROPODA (*Grote.*)

- \*514. *hirtipes* *Grote.* Victoria, Kaslo.

ORTHODES (*Guenée.*)

515. *irrorata* *Smith.* Victoria, Wellington, Vancouver.

HIMELLA *Grote.*

516. *infidelis* *Dyar.* Kaslo.

GRAPHIPHORA (*Hubner.*)

517. *curtica* *Smith.* New Westminster, Kaslo.  
518. *uniformis* *Smith.* Kaslo.  
\*519. *oviducta* *Guenée.* Victoria (E. A.).  
\*520. *communis* *Dyar.* (New variety.) Kaslo, Victoria (E. A.)  
\*521. *perbrunnea* *Grote.* Victoria (E. A.).  
\*522. *præses* *Grote.* Victoria, Wellington.  
\*523. *ferrigera* *Smith.* Victoria (E. A.).  
\*524. *pacifica* *Harvey.* Victoria, Wellington, Vancouver.  
\*525. *alia* *Guenée.* Kaslo.  
\*526. *subterminata* *Smith.* Wellington (G. W. T.), Vancouver (R. V. H.)

STRETCHIA (*Henry Edwards.*)

527. *normalis* *Grote.* Victoria, Kaslo.  
\*528. *plusiiformis* *H. Edwards.* Generally distributed.  
529. *variabilis* *Smith.* Kaslo.  
530. *transparens* *Grote.* Vancouver (R. V. Harvey).

PERIGRAPHA (*Lederer.*)

531. *achsha* *Dyar.* Kaslo.

CLEOCERIS (*Boisduval.*)

532. *rectifascia* *Smith.* Kaslo.



PLEROMA (*Smith*).

- \*533. *obliquata* *Smith*. Victoria (E. A.).  
 534. *bonnensula* *Smith*. Kaslo.  
 \*535. *apposita* *Smith*. Victoria (E. A.). Rare.

LETHOMOLA (*Hubner*).

- \*536. *germana* *Morrison*. Generally distributed. Not common.

XYLINA (*Ochsenheimer*).

- \*537. *contenta* *Grote*. Victoria (E. A.).  
 538. *torrida* *Smith*. Kaslo (J. C.).  
 \*539. *gausapata* *Grote*. Victoria (E. A.), rare.  
 \*540. *dilatocula* *Smith*. Victoria (E. A.), rare.  
 541. *patefacta* *Walker*. Kaslo.  
 542. *ferrealis* *Grote*. Kaslo.  
 \*543. *innominata* *Smith*. (Nameless  
 Pinion.) Vancouver, Victoria, N. Westminster.  
 544. *amanda* *Smith*. Victoria.  
 545. *fagina* *Morrison*. New Westminster, Kaslo.  
 \*546. *oregonensis* *Harvey*. Victoria (E. A.).  
 547. *holocinerea* *Smith*. Victoria, Wellington, Vancouver.  
 548. *baileyi* *Grote*. (Bailey's Pinion.) Wellington (G. W. T.).  
 549. *thaxteri* *Grote*. (Thaxter's  
 Pinion.) Wellington (G. W. T.).  
 550. *pexata* *Grote*. (Nappy Pinion.) Victoria.  
 551. *capax* *G. & R.* New Westminster (D. Jones).

ECHARVEYA (*Grote*).

- \*552. *carbonaria* *Harvey*. Victoria (E. A.), Vancouver (R. V. H.)

LITHOLOMIA (*Grote*).

- \*553. *napea* *Morrison*. Generally distributed (common).  
 554. *dumbari* *Harvey*. (Can. Ent.,  
 viii. 1876. B. C. (Dyar's Cat., No. 2116).

CALOCAMPA (*Stephens*).

- \*555. *nupera* *Lindner*. (American  
 Swordgrass.) Victoria, Vancouver.  
 556. *cineritia* *Grote*. Victoria, Kaslo.  
 \*557. *curvamacula* *Morrison*. (Dot  
 & Dash Swordgrass.) Victoria, Vancouver.

CYCILLIA (*Schrank*).

558. *obscurior* *Smith*. Hatzic, Kaslo.  
 559. *postera* *Guenée*. Kaslo.

560. *asteroides Guenee*. (The  
Asteroid.) Kaslo.  
RANCORA (*Smith*).
- \*561. *solidaginis Behr*. Victoria (E. A.), rare.  
BELLERA (*Walker*).
562. *gortynides Walker*. Vancouver (R. V. H.).  
GORTYNA (*Ochsenheimer*).
563. *medialis Smith*. Kaslo (J. C.).  
PAPAPEMA (*Smith*).
564. *insulidens Birl*. (Can. Ent.  
xxxiv. 115-1902.) Vancouver Isla J.  
PYRRHIA (*Hubner*).
565. *exprimens Walker*. Kaslo.  
XANTHIA (*Hubner*).
566. *flavago Fab*. Vancouver, New Westminster, Kaslo.  
\*567. *pulehiella Smith*. Vancouver, Victoria, Wellington.  
TRIGONOPHORA (*Hubner*).
- \*568. *periculosa Guenee*. Victoria, Vancouver, Wellington.  
\*569. *v-brunneum Grote*. Kaslo.  
EUCIRREDIA (*Grote*).
- \*570. *pampina Guenee*. Kaslo.  
SCOLIPTERYX (*Germer*).
- \*571. *libatrix Linnaeus*. (The Herald.) Generally distributed.  
PSEUDORTHOSIA (*Grote*).
- \*572. *variabilis Grote*. Victoria, Kaslo.  
PSEUDOGLEA (*Grote*).
573. *blanda Grote*. Kaslo.  
COSMIA (*Ochsenheimer*).
574. *paleacea Esper*. (Angle-striped  
Sallow.) Victoria, Kaslo.  
\*575. *punctirena Smith*. Victoria (A. W. H.).

ORTHOSIA (*Ochsenheimer*).

- \*576. *purpurea Grote.* Generally distributed.  
 \*577. *crispa Harvey.* Victoria (E. A.).  
 \*578. *decipiens Grote.* Victoria, New Westminster.  
 \*579. *ferruginoides Guenée.* Victoria.  
 580. *europa Grote & Robinson.* Revelstoke.

SCOPELOSOMA (*Curtis*).

581. *tristigmata Grote.* Vancouver, Wellington.

CALYNSIA (*Hubner*).

582. *orina Guenée.* Agassiz (R. V. H.).

ZOTHECA *Grote.*

- \*583. *tranquilla Grote.* (Western Elder Moth.) Generally distributed.

IPIMORPHIA (*Hubner*).

- \*584. *pleonectusa Grote.* (Even-lined Sallow.) Victoria, Kaslo.

HELIOTHIS (*Ochsenheimer*).

585. *phlogophagus (G. & R.)* Victoria, New Westminster, Kaslo.  
 586. *scutosus Fab.* (Spotted Clover Moth.) Kaslo.

MELICLEPTHA (*Hubner*).

587. *honesta Grote.* Kaslo.  
 588. *septentrionalis Hy. Edwards.* Kaslo.

HELIACA (*Herrich-Schaeffer*).

- \*589. *nexilis Morrison.* Victoria, Wellington, Kaslo.

PLUSIA (*Hubner*).

- \*590. *aeroides Grote.* Wellington, Agassiz, Kaslo.  
 \*591. *metallica Grote.* Victoria, Wellington, Kaslo.

EUCHALCIA (*Hubner*).

592. *putnami Grote.* Vancouver, Hatzic.

EOSPHOPTERYX (*Dyar*).

593. *thyatiroides Guenée.* Wellington, Hatzic.

AUTOGRAPHIA (*Hubner*).

- \*594. *nappa* *G. & R.* Victoria, Vancouver, Kaslo.  
 595. *labrosa* *Grote.* Victoria (G. T.).  
 596. *flagellum* *Walker.* Kaslo.  
 597. *pseudogamma* *Grote.* Kaslo (J. C.).  
 \*598. *californica* *Speger.* Generally distributed.  
 599. *brassica* *Riley.* Kaslo.  
 600. *rectangula* *Kirby.* Victoria, Vancouver, Kaslo.  
 601. *n-aureum* *Guenée.* Nelson (J. C.).  
 602. *vaccinii* *Hg. Edwards.* Kaslo.  
 603. *selecta* *Walker.* Victoria (E. A.), Kaslo (J. C.).  
 \*604. *celsa* *Hg. Edwards.* Victoria (E. A.).  
 605. *epigon* *Grote.* Victoria, Vancouver, Kaslo.  
 \*606. *ampla* *Walker.* Vancouver, Hatzie, Kaslo.  
 607. *excelsa* *Ottolengui.* Kaslo (J. C.).  
 \*608. *corruscans* *Strecker.* Victoria, Vancouver, Wellington.  
 609. *speciosa* *Ottolengui.* Corfield.  
 610. *dianema* *Boisdureau.* Kaslo.

SYNGRAPHIA (*Hubner*).

611. *ignea* *Grote.* Glacier.  
 \*612. *hoehenwarthi* *Hochenwacht.* Atlin.

AMBROSTOLA (*Ochsenheimer*).

613. *urentis* *Guenée.* Victoria, Wellington, Kaslo.

BEHRENSIA (*Grote*).

614. *conchiformis* *Grote.* Victoria, Wellington.

ANNAPHILA (*Grote*).

- \*615. *diva* *Grote.* Victoria, Vancouver, Wellington.  
 616. *decia* *Grote.* Goldstream.  
 \*617. *salicis* *Hg. Edwards.* Goldstream (E. A.).  
 \*618. *danistica* *Grote.* Kaslo (J. C.).

EUSTROTIA (*Hubner*).

- \*619. *albidula* *Guenée.* Generally distributed.

THERASEA (*Grote*).

620. *angustipennis* *Grote.* Kokanee Mt. (on snow, Dyar, 1903).  
 621. *major* *Smith.* Kaslo.  
 622. *areli* *Strecker.* Kaslo (J. Cockle).

HYAMIA (*Walker*).

623. *sexpunctata* *Grote.* Kaslo.

MYCTEOPHORA (*Hulst.*).624. longipalpata *Hst.* Kaslo.

## SUBFAMILY CATOCALINE.

DRASTERIA (*Hubner.*).

- \*625. crechten *Cramer.* Generally distributed.  
 626. crassiuscula *Haworth.* Kaslo.  
 \*627. cerulea *Grote.* Victoria, Wellington.

EUCLIDEA (*Ochsenheimer.*).\*628. cuspea *Hubner.* Generally distributed.MELIOPOTIS (*Hubner.*).

629. pallescens *G. & R.* Kaslo.  
 630. versabilis *Hurrey.* Victoria, Wellington.  
 631. jucunda *Hubner.* Kaslo.

CIRRHOBOLINA (*Grote.*).

632. declivata *Morrison.* Kaslo (J. C.).  
 633. mexicana *Behr.* Kaslo.

SYNEDA (*Guenée.*).

634. socia *Behr.* Kaslo (J. C.).  
 \*635. ochracea *Behr.* Goldstream (E. A.), Kaslo (J. C.).  
 \*636. hudsonica *G. & R.* Atlin, Stikine River.  
 637. athabasca *Newmegen.* B. C. (Dyar's Cat., No. 2,800).

CATOCALA (*Schrunk.*).

638. elda *Behrens.* Generally distributed, but rare.  
 639. relicta *Walker.* (The Relict.) Kaslo (J. C.).  
 640. frenchii *Poling.* Victoria (E. A.).  
 641. augusta *Hg. Edwards.* (Augusta Underwing.) Kaslo.  
 \*642. hermia *Hg. Edwards.* (Hermia Underwing.) Vancouver, Hatzic, Kaslo.  
 643. briseis *Edwards.* Kaslo.  
 644. faustina *Strecker.* (Faustina Underwing.) New Westminster (D. J.).  
 \*645. aholibah *Strecker.* (Aholibah Underwing.) Victoria (E. A.), New Westminster.  
 646. elintonii *Grote.* Clinton, Vancouver (E. Wilson).  
 647. amica *Hubner.* B. C. (Dyar's Cat., No. 2907).

TOXOCAMPA (*Guenée*).

- \*648. *victoria Grote*, Victoria, Wellington, Kaslo.

HOMOPTERA (*Boisduval*).

649. *lunata Dugy*, Kaslo (J. C.).  
 650. *calycanthata Smith & Abbot*, Kaslo.  
 651. *penns Morrison*, Vancouver, Wellington, Kaslo.

EREM'S (*Latreille*).

652. *odora Linnaeus*, Victoria, Vancouver (rare).

## SUBFAMILY HYPENINÆ.

EPIZEUXUS (*Hubner*).

653. *amula Hubner*, Victoria, Kaslo.

ZANCLOGNATHA (*Leiderer*).

654. *obscuripennis Grote*, Vancouver (R. V. H.).  
 655. *ochreipennis Grote*, Victoria, Wellington, Kaslo.

CHYTOLITA (*Grote*).

656. *morbidalis Guenée*, Vancouver (R. V. H.).

BLEPTINA (*Guenée*).

657. *cardinalis Guenée*, Victoria, Wellington, Kaslo.

PALTHIS (*Hubner*).

658. *angulalis Walker*, Vancouver, Wellington, Kaslo.

BOMOLOCHA (*Hubner*).

659. *bijugalis Walker*, Victoria, Wellington.  
 660. *scutellaris Grote*, Victoria, Vancouver.

PLATHYPENA (*Grote*).

661. *scabra Fabricius*, Vancouver, Wellington, Kaslo.

HYPENA (*Schrank*).

- \*662. *humuli Harris*, Generally distributed.  
 \*663. *californica Behr*, Victoria, Vancouver, Kaslo.  
 \*664. *decorata Smith*, Victoria, Goldstream (E. A.).  
 665. *modesta Smith*, Victoria, Wellington.

## FAMILY NYCTEOLIDÆ.

NYCTEOLA (*Hübner*).

- \*666. *revayana* *Scopoli*. Victoria (E. A.), Kaslo (J. C).  
 667. *columbiana* *Hg. Edwards*. Victoria, Vancouver.

## FAMILY PERICOPIDÆ.

GNOPHELA (*Walker*).

668. *latipennis* *Bdr.* Kaslo.  
 669. *vermiculata* *G. & R.* Kaslo.

## FAMILY NOTODONTIDÆ.

MELALOPHA (*Hübner*).

- \*670. *apicalis* *Walker*. Victoria, Kaslo.  
 671. *albosigma* *Fitch*. Vancouver.  
 672. *brucei* *Hg. Edwards*. Kaslo (J. C).

DATANA (*Walker*).

673. *ministra* *Druyg.* New Westminster (D. J.).

HYPERESCHRA (*Butler*).

674. *pacifica* *Bldr.* Kaslo.

OBONTOSIA (*Hübner*).

675. *elegans* *Strecker*. Kaslo.

NOTODONTA (*Ochsenheimer*).

676. *simplaria* *Graef*. Kaslo.

PHEOSIA (*Hübner*).

677. *dimidiata* *Herriek-Schaffner*. Kaslo.  
 \*678. *portlandia* *Hg. Edwards*. Victoria, Vancouver, Kaslo.

NADATA (*Walker*).

- \*679. *gibbosa* *Smith & Abbot*. Victoria, Vancouver, Kaslo.

TRASSA (*Walker*).

680. *coloradensis* *Hg. Edwards*. Kaslo.  
 \*681. *pallida* *Strecker*. Victoria (E. A.), Kaslo (J. C).

SCHIZURA (*Doubleday*).

682. *ipomœa Doubleday*. Kaslo.  
 683. *concinna Smith & Abbot*. Kaslo.  
 684. *perangulata Hy. Edwards*. Victoria (G. T.).  
 \*685. *unicornis Smith & Abbot*. Victoria (E. A.), N. Westminster (D. J.)

VALERIA (*Schrank*).

686. *occidentalis Lintner*. Victoria?

TARPYIA (*Ochs alheimer*).

687. *scelopendrina Boisduval*. Kaslo.  
 \*688. *albicomma Strecker*. Victoria (E. A.).

GLUPHISIA (*Boisduval*).

689. *septentrionalis Walker*. Kaslo.  
 690. *severa Hy. Edwards*. Kaslo (J. C.).  
 \*691. *danbyi Vennocqua*. Victoria (E. A.).

## FAMILY THYATIRIDÆ.

HABROSYNE (*Hubner*).

- \*692. *scripta Gosse*. Generally distributed.

PSEUDOTHYATIRA (*Grote*).

- \*693. *cymatophoroides Guenée*. Generally distributed.  
 \*694. *expultrix Grote*. Victoria, Vancouver, Kaslo.

EUTHYATIRA (*Smith*).

695. *lorata Grote*. Rocky Mountains.  
 \*696. *pudens Guenée*. Victoria, New Westminster, Kaslo.  
 697. *semicircularis Grote*. New Westminster, Victoria.

BOMBYCIA (*Hubner*).

- \*698. *improvisa Hy. Edwards*. Victoria (E. A.).

## FAMILY LIPARIDÆ.

NOTOLOPHUS (*Germer*).

699. *badia Hy. Edwards*. Generally distributed (common).

OLENE (*Hubner*).

700. *plagiata Walker*. Kaslo.



## FAMILY LASIOCAMPIDÆ.

TOLYPE (*Hubner*).

701. *velleda* *Stal.* Victoria(?)

MALACOSOMA (*Hubner*). Tent Caterpillars.

- \*702. *pluvialis* *Dyar.* Victoria, Kaslo (common).  
 \*703. *californica* *Packard.* Victoria (E. A.).  
 \*704. *disstria* *Hubner.* Generally distributed (common).

EPICNAPTERA (*Rambur*).

- \*705. *americana* *Harris.* Generally distributed.

## FAMILY PLATYPTERYGIDÆ. HOOKTIPS.

DREPANA (*Schrank*).

- \*706. *siculifer* *Packard.* Victoria, Wellington, Hatzie, Kaslo.

FALCARIA (*Haworth*).

707. *bilineata* *Packard.* Kaslo.  
 708. *levis* *Hudson.* Kaslo.

## FAMILY GEOMETRIDÆ.

## SUBFAMILY DYSPTERIDINÆ.

NYCTOBIA (*Hulst*).

- \*709. *nigroangulata* *Strecker.* Generally distributed.

PARAPTERA (*Hulst*).

- \*710. *danbyi* *Hulst.* (Winter-moth.) Victoria (E. A.).

RACHELA (*Hulst*).

- \*711. *occidentalis* *Hulst.* (Small  
 Winter moth.) Victoria (common November, Dec.).

## SUBFAMILY HYDRIOMENINÆ.

AGIA (*Hulst*).

712. *elborata* *Hulst.* Wellington.

TALLEDEGA (*Hulst.*).

- \*713. *montanata Packard.* Victoria, Wellington.  
 714. *magnoliatohilata Dyar.* (New  
 variety.) Kaslo (Dyar), 1903.

TEPHROCLOSTIS (*Hubner.*).

- \*715. *rotundopuncta Packard.* Victoria, Wellington.  
 \*716. *absinthiata Clerck.* (The  
 Absinth.) Kaslo.  
 717. *multistrigata Hulst.* Kaslo.  
 718. *multiscripta Hulst.* Kaslo.  
 \*719. *raveocostaliata Packard.* Generally distributed.  
 720. *satyrata Hubner.* Kaslo.  
 721. *laquearia Herrich-Schaeffer.* Kaslo.  
 722. *laricata Freyer.* Kaslo.  
 723. *niphadophilata Dyar.* (New  
 species.) Glacier, Field.  
 724. *cootenaiaata Dyar.* (New  
 species.) Kaslo.  
 725. *casloata Dyar.* (New species.) Kaslo.  
 726. *columbiata Dyar.* (New species.) Kaslo.  
 727. *bifasciata Dyar.* (New species.) Kaslo.  
 728. *subfoveata Dyar.* (New species.) Kaslo.

EUCYMATOGE (*Hubner.*).

729. *tenuata Hulst.* Wellington.  
 730. *grandis Hulst.* Bear Lake (J. C.).  
 731. *linariata Fabricius.* Kaslo.  
 732. *intestinata Guenée.* Kaslo.

VENUSIA (*Curtis.*).

- \*733. *cambrica Curtis.* Victoria, Wellington, Kaslo.  
 \*734. *duodecemlineata Packard.* Generally distributed (common).

EUCHECA (*Hubner.*).

- \*735. *albovittata Guenée.* (White-  
 striped Black.) Generally distributed.  
 \*736. *cretaceata Packard.* Cheam, Kaslo.  
 \*737. *albifera Walker.* Kaslo.  
 \*738. *brunneifasciata Packard.* Victoria (E. A), Wellington (G. T.).

EPIRRITA (*Hubner.*).

- \*739. *dilatata D. & S.* Victoria, Glacier.

CORYPHISTA (*Hulst.*).

740. *meadii Packard.* Vict., Wellington, Vancouver, Kaslo.  
 741. *badiaria Hy. Edwards.* Wellington.

HYDRIA (*Hubner.*)

- \*712. *undulata* *Linnaeus.* (Scallop-shell Moth.) Generally distributed.

PHILEREME (*Hubner.*)

- \*713. *multivagata* *Hulst.* Victoria, Wellington.

EUSTROMA (*Hubner.*)

- \*711. *populata* *Linnaeus.* Generally distributed.  
 715. *cervinifascia* *Walker.* Sandon.  
 716. *destinata* *Moschler.* Kaslo, Field.  
 \*717. *prunata* *Linnaeus.* Victoria (E. A.).  
 \*718. *nubilata* *Packard.* Kaslo, Victoria, Wellington.

NEOLEXIA (*Hulst.*)

- \*719. *xyliina* *Hulst.* Victoria, Wellington, Kaslo.

RURUMAPTERA (*Hubner.*)

- \*750. *hastata* *Linnaeus.* (Spear mark.) Generally distributed.  
 751. *gothicata* *Guenée.* Goldstream (rare).  
 752. *tristata* *Linnaeus.* Victoria.  
 \*753. *sociata* *Borkhausen.* Kaslo, Vancouver, Wellington.  
 754. *luctuata* *D. & S.* Kaslo.  
 \*755. *georgii* *Hulst.* Generally distributed.  
 \*756. *rubrosuffusata* *Packard.* Generally distributed.

ZENOPHLEPS (*Hulst.*)

- \*757. *lignicolorata* *Packard.* Victoria, Vancouver.

MESOLEUCA (*Hubner.*)

- \*758. *ruficiliata* *Guenée.* Wellington, Vancouver, Kaslo.  
 \*759. *gratulata* *Walker.* Generally distributed (common).  
 760. *caesiata* *D. & S.* Revelstoke, Field, Victoria.  
 \*761. *laeustrata* *Guenée.* Wellington, Kaslo.  
 \*762. *truncata* *Hufnagel.* (Very variable.) Generally distributed (common).  
 763. *otisi* *Dyar.* (New variety.) Ka lo, Glacier, Field.  
 764. *silaceata* *Hubner.* Vancouver, Wellington.  
 765. *albolineata* *Packard.* Kaslo.  
 \*766. *hersiliata* *Guenée.* Generally distributed.  
 767. *ethela* *Hulst.* Wellington.  
 \*768. *vasaliata* *Guenée.* Generally distributed.

HYDRIOMENA (*Hubner*).

- \*769. *sordidata Fabricius*. Generally distributed (common).  
 \*770. *autumnalis Stromeyer*. Victoria, Vancouver, Kaslo.  
 771. *tenuata Stephens*. Vancouver, Kaslo, Wellington.  
 \*772. *californiata Packard*. Generally distributed (common).  
 773. *speciosata Packard*. Victoria.  
 \*774. *rellata Grote*. Victoria (E. A.), not common.  
 775. *occidens Hulst*. Vancouver, New Westminster.  
 776. *multiferata Walker*. Kaslo.  
 777. *curvilinea Hulst*. B. C. (Dyar's List No. 3403).  
 \*778. *costiguttata Hulst*. Victoria (E. A.), Wellington (G. T.).  
 779. *excurvata Grote*. Kaslo, Vancouver.  
 \*780. *magnoliata Guenee*. Kaslo.

TRIPHOSA (*Stephens*).

- \*781. *progressata Walker*. Generally distributed.

CENOCALPE (*Hubner*).

- \*782. *gibbocostata Walker*. Victoria (A. W. H.).  
 783. *morrisata Hulst*. New Westminster (D. Jones).  
 784. *topazata Strecker*. Mt. Cheam (R. V. H.).

GYPSOCHROA (*Hubner*).

- \*785. *designata Hufnagel*. Victoria (E. A.), Kaslo (J. C.).

TRICHOCLAMYS (*Hulst*).

- \*786. *lacteata Packard*. Generally distributed (common).

ERSEPHILA (*Hulst*).

787. *indistincta Hulst*. Kaslo.

PETROPHORA (*Hubner*).

788. *abrasaria Herrich-Schaeffer*. Kaslo.  
 789. *munitata Hubner*. Kaslo.  
 \*790. *ferrugata Terek*. Kaslo.  
 \*791. *convallaria Guenee*. Generally distributed.  
 \*792. *defensaria Guenee*. Generally distributed (common).  
 \*793. *fluctuata Linnaeus*. Victoria.

## SUBFAMILY STERRHINÆ.

COSYMBIA (*Hubner*).

- \*794. *lucenaria Hubner*. Generally distributed.  
 \*795. *dataria Hulst*. Victoria (E. A.). Not common.

XYSTROTA (*Hulst.*).796. *hepaticaria Guenée.* Victoria, Kaslo.CINGLIS (*Guenée.*).\*797. *fuscata Hulst.* Victoria, Kaslo.LEPTOMERIS (*Hubner.*).798. *quinquelinearia Packard.* Victoria, Wellington, Kaslo.Eois (*Hubner.*).799. *rotundopennata Packard.* Kaslo.\*800. *sideraria Guenée.* Victoria (E. A.), Kaslo (J. C.)

## SUBFAMILY GEOMETRINÆ.

EUCROSTIS (*Hubner.*).\*801. *viridipennata Hulst.* Victoria, Wellington, Kaslo.SYNCILORA (*Guenée.*).802. *liquoraria Guenée.* Wellington (G. T.).803. *rubrifrontaria Packard.* Kaslo.APLODES (*Guenée.*).804. *minosaria Guenée.* Victoria (A. W. H.).805. *rubrifrontaria Packard.* Wellington.806. *darwiniata Dyar.* (New  
variety.) Kaslo (Dyar, 1903.)

## SUBFAMILY ENNOMINÆ.

EPALIS (*Hulst.*).807. *truncataria Walker.* Stikine (L. D. Taylor), June, 1898.ORTHOEIDONIA (*Packard.*).808. *exornata Walker.* Kaslo.809. *semiclarata Walker.* Vancouver, Kaslo.DASYEIDONIA (*Packard.*).810. *avuncularia Guenée.* Victoria, Osoyoos, New Westminster.DEILINIA (*Hubner.*).\*811. *variolaria Guenée.* Kaslo.\*812. *pacificaria Packard.* Kaslo, Victoria.813. *bifilata Hulst.* Kaslo.

814. *perpallidaria Grote.* B. C. (Dyar's List, No. 3632).  
 \*815. *litaria Hulst.* Kaslo.  
 \*816. *pulveraria Hulst.* Kaslo.  
 \*817. *quadraria Grote.* Kaslo.  
 818. *nigroseriata Packard.* Kaslo.  
 \*819. *belhrensaria Hulst.* Kaslo.  
 820. *fumosa Hulst.* Kaslo.  
 \*821. *rectifascia Hulst.* Kaslo.

SCIAGRAPHIA (*Hulst.*)

- \*822. *granitata Guenée.* (Granite Moth.) Generally distributed.  
 \*823. *neptata Guenée.* Vancouver, New Westminster, Kaslo.  
 \*824. *sinuata Packard.* Victoria, Nanaimo (G. W. T.).  
 825. *continuata Walker.* Kaslo.

PHILOPHIA (*Duponchel.*)

826. *enotata Guenée.* Wellington, Hatzic.

MACARIA (*Curtis.*)

827. *incolorata Dyar.* (New variety.) Kaslo (Dyar, 1903).

CYMATOPHORA (*Hübner.*)

828. *biactata Walker.* Kaslo.  
 829. *latiferrugata Walker.* Kaslo.  
 830. *rectifascia Hulst.* Kaslo.  
 \*831. *inquinaria Hulst.* Kaslo.  
 832. *matilda Dyar.* (New species.) Kaslo (Dyar, 1903).

ANTHELIA (*Hulst.*)

- \*833. *taylorata Hulst.* Victoria.  
 \*834. *nigroseriata Dyar (?)* Victoria (E. A.).

SYMPHERTA (*Hulst.*)

835. *julia Hulst.* Rocky Mountains, Kaslo(?)  
 \*836. *tripunctaria Packard.* Kaslo.

THALLOPHAGA (*Hulst.*)

837. *fautaria Hulst.* B. C. (Dyar's List, No. 3750).

ÆTHYCTERA (*Hulst.*)

- \*838. *electa Hulst.* This is a doubtful species (G. T.).

ENEMERA (*Hulst.*)

- \*839. *juturnaria Guenée.* Kaslo.

CARIFETA (*Walker*).

- \*840. *divisata Walker*. Victoria, Wellington, Kaslo.  
 \*841. *aqualiaria Grote*. Victoria (E. A.), Kaslo (J. C.). Not  
 common.

PHENGGOMATEA (*Hulst*).

- \*842. *edwardsata Hulst*. Goldstream (E. A.), rare.

ENYPIA (*Hulst*).

- \*843. *venata Grote*. Generally distributed.  
 \*844. *perangulata Hulst*. Kaslo.

PHILEDIA (*Hulst*).

- \*845. *punctomaculata Hulst*. Goldstream (E. A.), Kaslo (J. C.).

NEPYTIA (*Hulst*).

- \*846. *nigrovenaria Packard*. Kaslo, Victoria.  
 \*847. *phantasmaria Strecker*. Vancouver (R. V. H.).  
 \*848. *umbrosata Packard*. Victoria, Kaslo.

ALCIS (*Curtis*).

- \*849. *sulphuraria Packard*. Goldstream (E. A.), Kaslo (J. C.).  
 850. *latifasciaria Packard*. Victoria, Wellington.  
 851. *latipennis Hulst*. Mt. Arrowsmith (Vancouver Island).

PARAPHIA (*Guenée*).

852. *subatomaria Woolf*. Hatzic, Kaslo.

SPODOLEPIS (*Hulst*).

853. *substriaria Hulst*. Victoria, Kaslo, Osoyoos.

GABRIOLA (*Taylor*).

854. *dyari Taylor*. (New species.) Kaslo (J. C.).

SELIDOSEMA (*Hübner*).

855. *emfasciatum Dyar*. (New  
 variety.) Kaslo (Dyar, 1903).  
 856. *umbrosarium Hübner*. Wellington, Vancouver.  
 857. *excelsarium Strecker*. Wellington.  
 \*858. *albescens Hulst*. Vancouver, New Westminster.

CLEORA (*Curtis*).

- \*859. *indicataria Walker.* New Westminster.  
 860. *pumpinaria Guenée.* Kaslo.  
 861. *subgenericata Dyar.* (New Generally distributed.  
 variety.)

AETHALOPTERA (*Hulst*).

862. *intextata Walker.* Kaslo.

ECTROPIS (*Hubner*).

863. *crepuscularia D. & S.* Wellington, Kaslo.

LYCIA (*Hubner*).

- \*861. *cognataria Guenée.* Generally distributed.

CONIODES (*Hulst*).

- \*865. *plumigeraria Hulst.* (Walnut  
 Spin-worm.) Victoria (E. A.).

JUBARELLA (*Hulst*).

866. *danbyi Hulst.* Victoria (rare).

ERANNIS (*Hubner*).

- \*867. *vancouverensis Hulst.* Victoria.

DYSCLIA (*Hubner*).

868. *oreiferata Walker.* Kaslo.

ANAGOGA (*Hubner*).

- \*869. *occiduaria Walker.* Victoria, Vancouver.

SICYA (*Guenée*).

- \*870. *macularia Harris.* Generally distributed.

THERINA (*Hubner*).

- \*871. *somniaria Hulst.* (Oak tree  
 Pest.) Victoria (common).  
 872. *lugubrosa Hulst.* Kaslo, Victoria? (E. A.).

METROCAMPA (*Latreille*).

- \*873. *praegrandaria Guenée.* Generally distributed (common)



ENNAMOS (*Treitschke*).

- \*874. *magnarius* *Guenée* (Notch-wing) Victoria, Vancouver, Kaslo.

PLAGODIS (*Hubner*).

875. *approximaria* *Dyar*. Ainsworth (J. C.).

HYPERITIS (*Guenée*).

- \*876. *unicaria* *Herrich-Schaeffer*. Victoria, Kaslo.  
 \*877. *trianguliferata* *Packard*. Generally distributed.  
 878. *notataria* *Hulst*. Victoria (?).

ANIA (*Stephens*).

879. *limbaria* *Haworth*. Kaslo.

GONDONTIS (*Hubner*).

- \*880. *duaria* *Guenée*. Generally distributed.

EUCHLENA (*Hubner*).

881. *occantaria* *Hulst*. Doubtful species (R. V. Harvey).  
 882. *jolsonaria* *Fitch*. Victoria (A. W. H.).  
 883. *astylusaria* *Walker*. Kaslo.  
 \*884. *pectinaria* *P. & S.* Victoria, Kaslo.

EUTRAPELA (*Hubner*).

- \*885. *alcipharia* *Walker*. Generally distributed.

SYNTAXIS (*Hulst*).

- \*886. *pallulata* *Hulst*. Victoria (E. A.), not common.

PHERNE (*Hulst*).

887. *jubararia* *Hulst*. Victoria, Vancouver.

METANEMA (*Guenée*).

888. *inatomaria* *Guenée*. Victoria (A. W. H.).  
 \*889. *quercivoraria* *Guenée*. Victoria.

MARMEREA (*Hulst*).

890. *occidentalis* *Hulst*. Wellington, Vancouver.

AZELINA (*Hulst*).

- \*891. *occidentalis* *Hulst*. Generally distributed.

SABULODES (*Guenée*).

892. *cervinaria* *Packard*. Doubtful species (E. A.).  
 \*893. *auranticaria* *Packard*. Victoria (E. A.).  
 894. *cutemilata* *Grote*. Kaslo.

## SUBFAMILY BREPHINÆ.

BREPHIOS (*Ochsenhüner*).

- \*895. *infans* *Moschler* (The Infant). Goldstream (E. A.), Wellington (G.T.).

## FAMILY EPIPLEMIDÆ.

CALLIZIA (*Packard*).

- \*896. *amorata* *Packard*. Generally distributed.

## SUPERFAMILY TINEOIDEA.

## FAMILY NOLIDÆ.

CELAMA (*Walker*).

897. *minna* *Butler*. Victoria, Kaslo.

ROSELIA (*Hubner*).

- \*898. *minuscule* *Zeller*. Victoria (E. A.).

## FAMILY PSYCHIDÆ.

CHALIA (*Moore*).

899. *fragmentella* *Hj. Edwards*. Kaslo.

## FAMILY COCHLIDIIDÆ.

TORTRICIDIA (*Packard*).

900. *testacea* *Packard*. Kaslo.

## FAMILY COSSIDÆ.

COSSUS (*Fabricius*).

901. *populi* *Walker*. Kaslo.

## FAMILY SESIIDÆ.

BEMBECIA (*Hubner*).

902. *marginata* *Hubner*. (Black-berry Borer.) Victoria (E. A.).

ALBUNA (*Hy. Edwards*).

903. *pyramidalis Walker.* Kaslo.  
 904. *montana Hy. Edwards.* Kaslo.  
 905. *coloradensis Hy. Edwards.* Kaslo.

SESIA (*Fabricius*).

906. *tipuliformis Clerck.* Victoria.  
 907. *americanam Beut.* B. C. (Dyar's List, No. 4218).

## FAMILY PYRALIDÆ.

## SUBFAMILY PYRAUSTINÆ.

SYMPHYSA (*Hampson*).

908. *eripalis Grote.* Nelson.

DESMIA (*Westwood*).

- \*909. *funeralis Hubner.* (Group-leaf  
Folder.) Victoria, Kaslo.

EVERGESTIS (*Hubner*).

910. *funalis Grote.* Victoria.  
 911. *straminealis Hubner.*

NOMOPHILA (*Hubner*).

912. *noctuella D. & S.* Kaslo.

LOXOSTEGE (*Hubner*).

913. *commixtalis Walker.* Kaslo.

PERISPASTA (*Zeller*).

914. *caeculalis Zeller.*

PHILYCTENIA (*Hubner*).

- \*915. *ferrugalis Hubner.* Kaslo.  
 916. *profundalis Packard.* Victoria.  
 917. *itysalis Walker.* Kaslo (J. C.).  
 \*918. *washingtonalis Grote.* Victoria, Vancouver, Kaslo.  
 919. *terrealis Treitschke.* Kaslo (J. C.).  
 920. *tertialis Guenee.* Kaslo (J. C.).  
 921. *tillialis Dyar.* (New species.) Kaslo, Field.

PYRAUSTEA (*Schrank*).

922. <i>aglaealis Walker.</i>	Kaslo.
923. <i>theostelis Walker.</i>	Kaslo.
924. <i>orplisalis Walker.</i>	
925. <i>mustelinulis Packard.</i>	Wellington.
*926. <i>fumiferalis Hulst.</i>	Kaslo.
*927. <i>unifascialis Packard.</i>	Victoria, Kaslo (common).
928. <i>foetinalis Lederer.</i>	
929. <i>borealis Packard.</i>	Kaslo.
930. <i>generosa Grote &amp; Robinson.</i>	
931. <i>nicalis Grote.</i>	Kaslo.
932. <i>funebriis Strom.</i>	Victoria, Wellington, Kaslo.
933. <i>ochosalis Dyar.</i>	Kaslo (J. C.).

CORNIFRONS (*Lederer*).

934. <i>similis Grote.</i>	Wellington, Kaslo.
----------------------------	--------------------

NOCTUELLA (*Guenée*).

935. <i>thalialis Walker.</i>	Kaslo.
936. <i>nuchalis Grote.</i>	Kaslo.

## SUBFAMILY SCOPARIINÆ.

SCOPARIA (*Haworth*).

937. <i>nominatilis Hulst.</i>	Vancouver, Kaslo.
938. <i>rectilinea Zeller.</i>	Vancouver, Kaslo.
939. <i>centuriella D. &amp; S.</i>	Kaslo.
940. <i>fernaldalis Dyar.</i>	Shawnigan, Kaslo.
941. <i>tricoloralis Dyar.</i>	Ainsworth.

## SUBFAMILY PYRALINÆ.

PYRALIS (*Linnaeus*).

942. <i>electalis Hulst.</i>	Kaslo.
*943. <i>farinalis Linnaeus.</i> (Meal Snout Moth.)	Victoria, Vancouver, Kaslo.

## SUBFAMILY CRAMBINÆ.

CRAMBUS (*Fabricius*).

944. <i>hamellus Thunberg.</i>	Wellington, Kaslo.
945. <i>pascuellus Linnaeus.</i>	Victoria.
946. <i>leachellus Zincken.</i>	Victoria (A. W. Hanham).
947. <i>unistriatellus Packard.</i>	Kaslo.
*948. <i>dumetellus Hubner.</i>	Generally distributed (common).

- |  |                                       |
|--|---------------------------------------|
| 949. hortuellus <i>Hubner.</i>                     | Vancouver (R. V. H.).                 |
| 950. perlellus <i>Scopoli.</i>                     | Nanaimo (T. Bryant).                  |
| 951. myellus <i>Hubner.</i>                        | Wellington, Kaslo.                    |
| 952. vulgivagellus <i>Clemens.</i>                 | Nanaimo, Kaslo.                       |
| 953. attenuatus <i>Grote.</i>                      | Vancouver Island (Fernald).           |
| 954. oregonicus <i>Grote.</i>                      | Goldstream (A. W. H.), Kaslo (J. C.). |
| 955. bonifatellus <i>Hulst.</i>                    | Revelstoke, Kaslo.                    |
| 956. triseetus <i>Walker.</i>                      | Nanaimo, Kaslo.                       |
| 957. murellus <i>Dyar</i> (new species).           | Kaslo (J. C.).                        |
| 958. plumhifimbriellus <i>Dyar.</i> (New species.) | Kaslo.                                |

## SUBFAMILY GALLERINÆ.

GALLERIA (*Fabricius*).

- |  |                       |
|--|-----------------------|
| *959. mellonella <i>Linnæus.</i> (Bee-moth.) | Victoria, Wellington. |
|--|-----------------------|

## SUBFAMILY PHYCITINÆ.

MYELOIS (*Hubner*).

- |                                |             |
|--------------------------------|-------------|
| 960. corniella <i>Rayonot.</i> | Revelstoke. |
|--------------------------------|-------------|

DIORYCTRIA (*Zeller*).

- |                                   |                |
|-----------------------------------|----------------|
| 961. ahietella <i>D. &amp; S.</i> | Kaslo (J. C.). |
|-----------------------------------|----------------|

DASYPYGA (*Rayonot*).

- |                                       |        |
|---------------------------------------|--------|
| 962. alternosquamella <i>Rayonot.</i> | Kaslo. |
|---------------------------------------|--------|

PROMYLEA (*Rayonot*).

- |                                  |                          |
|----------------------------------|--------------------------|
| 963. lunigerella <i>Rayonot.</i> | Vancouver Island (Dyar). |
|----------------------------------|--------------------------|

AMBESA (*Grote*).

- |                                  |                |
|----------------------------------|----------------|
| 964. walsinghami <i>Rayonot.</i> | Kaslo (J. C.). |
|----------------------------------|----------------|

NEPHOPTERYX (*Hubner*).

- |                                |                                |
|--------------------------------|--------------------------------|
| 965. ovalis <i>Packard.</i>    | Kaslo (J. C.).                 |
| 966. fasciolalis <i>Hulst.</i> | B. C. (Dyar's List, No. 1736). |
| 967. subinctella.              | Kaslo.                         |

MEROPTERA (*Grote*).

- |                             |        |
|-----------------------------|--------|
| 968. pravella <i>Grote.</i> | Kaslo. |
|-----------------------------|--------|

SALEBRIA (*Zeller*).

- |                                |                |
|--------------------------------|----------------|
| 969. levigatella <i>Hulst.</i> | Kaslo (J. C.). |
|--------------------------------|----------------|

LAODAMIA (*Ragonot*).970. *fusca* *Haworth*. Kaslo.PYLA (*Grote*).\*971. *scintillans* *Grote*. Cleam Peak (R. V. H.).MEGASIS (*Guenée*).\*972. *atrella* *Hulst*. Goldstream, V. I. (E. A.).ETIELLA (*Zeller*).973. *zinekenella* *Treitschke*. Kaslo (J. C.).ZOPHODIA (*Hubner*).\*974. *grossulariae* *Kiley*. (Gooseberry  
Fruit worm.) Victoria (E. A.).975. *packardella* *Ragonot*. Kaslo.ECCOPSIA (*Ragonot*).976. *serratilineella* *Ragonot*. Shawnigan Lake.EUZOPHERA (*Zeller*).977. *ochrifrontella* *Zeller*. Kaslo.HULSTEA (*Ragonot*).978. *undulata* *Clemens*. Wellington, Kaslo.HOMEOSOMA (*Curtis*).979. *mucidellum* *Ragonot*. Kaslo.EPHESTIA (*Guenée*).980. *amarella* *Dyar*. (New species.) Kaslo (Dyar, 1903).EPHESTIODES (*Ragonot*).981. *gilyescentella* *Ragonot*. Kaslo.982. *benjaminella* *Dyar*. (New  
species.) Kaslo.PLODIA (*Guenée*).983. *interpunctella* *Hubner*. (Indian-  
meal Moth.) Wellington (T. B.).

## FAMILY PTEROPHORIDÆ.

ONYPTILUS (*Zeller*).

984. *ningoris* *Walsingham*. Wellington (T. B.).  
 985. *tenuidactylus* *Fitch*. Kaslo.

PLATYPTILIA (*Hubner*).

986. *pica* *Walsingham*. Vancouver Island.  
 987. *cosmodactyla* *Hubner*. Kaslo.  
 988. *carduidactyla* *Riley*. Kaslo.  
 989. *perenodactyla* *Walsingham*. Wellington (T. B.).  
 990. *fragilis* *Walsingham*. Wellington (T. B.).  
 991. *tesseradactyla* *Linnaeus*. Kaslo.

PTEROPHORUS (*Geoffroy*).

992. *brucei* *Fernald*. Kaslo.  
 993. *helianthi* *Walsingham*. Kaslo.  
 994. *angustus* *Walsingham*. Kaslo.  
 995. *mathewianus* *Zeller*. Vancouver Isd. (Dyar's List, No. 4972)  
 996. *eupatorii* *Fernald*. Victoria.

STENOPTILIA (*Hubner*).

997. *coloradensis* *Fernald*. Kaslo.

## FAMILY ORNEODIDÆ.

ORNEODES (*Latreille*).

998. *hexadactyla* *Linnaeus*. (Six-  
 plume Moth.) Kaslo.

## FAMILY TORTRICIDÆ.

EXARTEMA (*Clemens*).

999. *permundanum* *Clemens*. Wellington (T. B.).  
 1000. *fasciatanum* *Clemens*. Wellington (T. B.).

OLETHREUTES (*Hubner*).

1001. *nimbatana* *Clemens*. Victoria.  
 1002. *capreana* *Hubner*. Kaslo.  
 1003. *duplex* *Walsingham*. Kaslo.  
 1004. *chalybeana* *Walsingham*. Kaslo.  
 \*1005. *constellatana* *Zeller*. Victoria (E. A.).  
 1006. *campestrana* *Zeller*. Kaslo.

EUCOSMA (*Hubner*).

1007. <i>circulana Hubner.</i>	Kaslo.
1008. <i>atomosana Walsingham.</i>	Kaslo.
1009. <i>agricolana Walsingham.</i>	Kaslo.
1010. <i>juncticiliana Walsingham.</i>	Kaslo.
1011. <i>transmissana Walker.</i>	Kaslo.
1012. <i>similana Hubner.</i>	Kaslo.
1013. <i>dorsisignatana Clemens.</i>	Kaslo.
1014. <i>castaneana Walsingham.</i>	Kaslo.
1015. <i>pulsatillana Dyar.</i>	Kaslo.
1016. <i>crenana Hubner.</i>	Kaslo.

THIODIA (*Hubner*).

1017. <i>apacheana Walsingham.</i>	Kaslo.
1018. <i>pseudotsugana Kearfoot.</i>	Kaslo.
1019. <i>arctostaphylana Kearfoot.</i>	Kaslo.
1020. <i>elongana Walsingham.</i>	Kaslo.
1021. <i>transversa Walsingham.</i>	Kaslo.
1022. <i>infimbriana Dyar. (New variety.)</i>	Kaslo.

PROTEOPTERYX (*Walsingham*).

*1023. <i>oregonana Walsingham.</i>	Victoria (E. A.).
-------------------------------------	-------------------

EPINOTIA (*Hubner*).

1024. <i>biangulana Walsingham.</i>	Kaslo.
1025. <i>lindana Fernald.</i>	Kaslo.
1026. <i>medioplagata Walsingham.</i>	Kaslo.

TMETOCERA (*Lederer*).

1027. <i>ocellana Schiffermuller.</i>	Wellington (T. B.).
---------------------------------------	---------------------

EUDEMIS (*Hubner*).

1028. <i>vacciniana Packard.</i>	Kaslo.
----------------------------------	--------

ANCYLIS (*Hubner*).

1029. <i>mediofasciana Clemens.</i>	Kaslo.
1030. <i>biarcuana Stephens.</i>	Kaslo.
1031. <i>pacificana Walsingham.</i>	Kaslo.

ENARMONIA (*Hubner*).

1032. <i>nigricana Stephens.</i>	Kaslo.
1033. <i>cockleana Kearfoot.</i>	Kaslo (J. C.).
1034. <i>galliesaliciana Riley.</i>	Kaslo.



HEMIMENE (*Hubner*).

1035. *alpinana* *Treitschke*. Kaslo.

## SUBFAMILY TORTRICINÆ.

ALCERIS (*Hubner*).

1036. *effractana* *Frölich*. Kaslo (Dyar).  
 1037. *scabrana* *Curtis*. Kaslo (Dyar).  
 1038. *nigrolinea* *Robinson*. Victoria, Wellington.  
 1039. *ferruginiguttana* *Fernald*. Wellington, Shawnigan Lake.  
 1040. *hastiana* *Linnaeus*. Victoria, Kaslo.  
 1041. *signatana* *Heyden*. Kaslo.  
 1042. *schalleriana* *Linnaeus*. Kaslo (J. C.).  
 1043. *variana* *Fernald*. Kaslo.  
 1044. *britannia* *Keayfoot*. Shawnigan Lake, V. I.

CENOPIS (*Zeller*).

1045. *pettitana* *Robinson*.

SPARGANOTIIS (*Hubner*).

1046. *xanthoides* *Walker*. Vancouver Island (Fernald).  
 1047. *irrorea* *Robinson*. Wellington (T. B.).

ARCHIPS (*Hubner*).

- \*1048. *rosaceana* *Harris*. Generally distributed.  
 1049. *argyrospila* *Walker*. Field.  
 1050. *virescans* *Clemens*. Kaslo.  
 1051. *persicana* *Fitch*. Kaslo, Wellington.

PLATYNOTA (*Clemens*).

1052. *sentana* *Clemens*. Kaslo.

TORTRIX (*Linnaeus*).

1053. *albicomana* *Clemens*. Kaslo.  
 1054. *bergianiana* *Linnaeus*. Victoria, Kaslo.  
 1055. *fumiferana* *Clemens*. Victoria.  
 1056. *ossecana* *Scopoli*. Kaslo.  
 1057. *argentata* *Clerck*. Kaslo.

EVLIA (*Hubner*).

1058. *ministrana* *Linnaeus*. Wellington, Kaslo.  
 1059. *gloverana* *Walsingham*. Kaslo.

## SUBFAMILY PHALONINÆ.

PHALONIA (*Hubner*).

1060. *deutschiana* *Zetterstedt*. Kaslo.  
 1061. *dubitana* *Hubner*. Kaslo.

COMMOPHILA (*Hubner*).1062. fuscodorsana *Kearfoot*. Kaslo (J. C.).CARPOSINA (*Herrick-Schweffer*).1063. crescentella *Walsingham*. Kaslo (J. C.).

## FAMILY YPONOMEUTIDÆ.

EUCERATIA (*Walsingham*).\*1064. castella *Walsingham*. Victoria (E. A.).PERICLYMENOBUS (*Wallengren*).1065. dentiferellus *Walsingham*. Kaslo.TRACHOMA (*Wallengren*).1066. falciarella *Walsingham*. Kaslo.

## ZELLERIA.

1067. ribesiella *Busck*. Kaslo.1068. gracilariella *Busck*. Kaslo.CEROSTOMA (*Latreille*).1069. radiatella *Donoran*. Kaslo.PLUTELLA (*Schrank*).1070. maculipennis *Curtis*. Wellington, Kaslo.\*1071. porrectella *Linnaeus*. Victoria (E. A.).\*1072. interrupta *Walsingham*. Generally distributed.1073. poulella *Busck*. Kaslo (J. C.).GLYPHPTERYX (*Hubner*).1074. imprigitella *Clemens*. Kaslo.CHOREUTIS (*Hubner*).1075. onustana *Walker*. Kaslo.1076. leucobasis *Fernald*. Wellington (T. B.).HEMEROPHILA (*Hubner*).1077. alpinella *Busck*. Kaslo.ORCHEMIA (*Guenée*).1078. betuliperda *Dyar*. (New  
variety.) Kaslo (Dyar, 1903).

## FAMILY GELECHIIDÆ.

ARISTOTELIA (*Hubner*).

- |                                    |        |
|------------------------------------|--------|
| 1079. <i>rubidella Clemens.</i>    | Kaslo. |
| 1080. <i>fungivorella Clemens.</i> | Kaslo. |
| 1081. <i>notatella Busck.</i>      | Kaslo. |
| 1082. <i>harrisonella Busck.</i>   | Kaslo, |

GLYPHIDOCERA (*Walsingham*).

- |                                     |        |
|-------------------------------------|--------|
| 1083. <i>septentrionella Busck.</i> | Kaslo. |
|-------------------------------------|--------|

ANACAMPSIS (*Curtis*).

- |                                       |                   |
|---------------------------------------|-------------------|
| *1084. <i>niveopulvella Chambers.</i> | Victoria (E. A.). |
|---------------------------------------|-------------------|

GELECHIA (*Hubner*).

- |                                  |         |
|----------------------------------|---------|
| 1085. <i>mandella Busck.</i>     | Sandon. |
| 1086. <i>monella Busck.</i>      | Kaslo.  |
| 1087. <i>abactella Busck.</i>    | Kaslo.  |
| 1088. <i>ceanothiella Busck.</i> | Kaslo.  |

## FAMILY GECOPHORIDÆ.

DEPRESSARIA (*Haworth*).

- |                                      |                                |
|--------------------------------------|--------------------------------|
| 1089. <i>arnicella Walsingham.</i>   | Wellington (T. B.).            |
| 1090. <i>argillacea Walsingham.</i>  | Revelstoke, Wellington.        |
| 1091. <i>klamathiana Walsingham.</i> | Kaslo.                         |
| 1092. <i>ciniflonella Zeller.</i>    | B. C. (Dyar's List, No. 5869). |
| 1093. <i>rosaciliella Busck.</i>     | Kaslo (J. C.).                 |
| 1094. <i>alienella Busck.</i>        | Kaslo.                         |
| 1095. <i>pallidella Busck.</i>       | Kaslo.                         |

GECOPHORA (*Latreille*).

- |                                       |                  |
|---------------------------------------|------------------|
| 1096. <i>borkhauseni Zeller.</i>      | Kaslo.           |
| 1097. <i>coloradella Walsingham.</i>  | Kaslo (J. C.).   |
| 1098. <i>dimidiella Walsingham.</i>   | Kaslo.           |
| 1099. <i>pseudopretella Stainton.</i> | Victoria, Kaslo. |

## FAMILY ELACHISTIDÆ.

SEYTHIRIS (*Hubner*).

- |                                |        |
|--------------------------------|--------|
| 1100. <i>magnatella Busck.</i> | Kaslo. |
|--------------------------------|--------|

MOMPIA (*Hubner*).

- |                                    |        |
|------------------------------------|--------|
| 1101. <i>decorella Stephens.</i>   | Kaslo. |
| 1102. <i>grandisella Chambers.</i> | Kaslo. |

ENDROSIS (*Hubner*).

1103. lacteella *D. & S.* Kaslo.

## FAMILY TINEIDÆ.

LITHOCOLLETES (*Hubner*).

1104. populiella *Chambers.* Kaslo.

GRACILARIA (*Haworth*).

1105. elongella *Linnaeus.* Kaslo  
 1106. stigmatella *Fabricius.* Kaslo.  
 \*1107. pulchella *Chambers.* Victoria (E. A.).  
 1108. burgessiella *Zeller.* Victoria.

LEUCOPTERA (*Hubner*).

1109. pachystimella *Busek.* Kaslo.

LYONETIA (*Hubner*).

1110. speculella *Clemens.* Kaslo.  
 1111. saliciella *Busek.* Kaslo.

PHYLIOCNISTIS (*Zeller*).

1112. populiella *Chambers.* Kaslo.

ACRYRESTHIA (*Hubner*).

1113. goedertella *Linnaeus.* Kaslo.  
 1114. pygmeella *Hubner.* Kaslo.

INCURVARIA (*Haworth*).

1115. arifoliella *Fitch.* Kaslo.  
 \*1116. aenescens *Walsingham.* Victoria (E. A.).

TINEOLA (*Herric's-Schaeffer*).

1117. bisselliella *Hummel.* (The  
 Clothes-moth.) Kaslo.

MONOPIS (*Hubner*).

1118. biflavimaculella *Clemens.* Kaslo (J. C.).

TINEA (*Linnaeus*).

1119. auropulvella *Chambers.* Frye Creek (Dyar).  
 1120. pellationella *Linnaeus.* (Fur-  
 moth.) Generally distributed.

ADELA (*Latreille*). Long Antennae Moths.

- \*1121. *septentrionella* *Walsingham*. Victoria (E. A.).  
 1122. *trigrapha* *Zeller*. Goldstream (A. W. H.).

## SUPERFAMILY MICROPTERYGOIDEA.

## FAMILY HEPIALIDÆ.

HEPIALUS (*Fabricius*).

- \*1123. *hyperboreus* *Möschler*. (Ghost  
 Moth.) Victoria (E. A.), Vancouver (R. V. H.).  
 \*1124. *sequoiolus* *Behrens*. Victoria.  
 1125. *montanus* *Stretch*. Victoria.

## ADDENDA.

MAESTRA (*Ochsenheimer*).

- \* *variolata* *Smith*. Victoria (E. A.). Rare.

GRAPHIPHORA (*Hubner*).

- columbia* *Smith*. B. C. (Dyar's Cat., No. 2023).

SITOTROGA (*Heinemann*).

- \* *cerealella* *Oliver*. (Angoumois  
 Grain Moth.) Victoria (E. A.).

VICTORIA, B. C.:

Printed by RICHARD WOLFENDEN, L.S.O., V.D., Printer to the King's Most Excellent Majesty.

1904.

