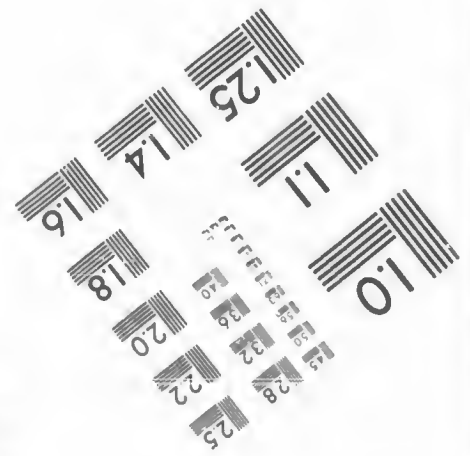
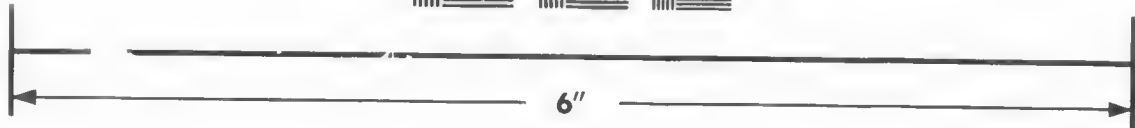
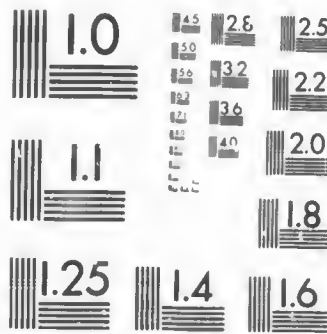


**IMAGE EVALUATION  
TEST TARGET (MT-3)**



**Photographic  
Sciences  
Corporation**

23 WEST MAIN STREET  
WEBSTER, N.Y. 14580  
(716) 872-4503

8  
25  
22

**CIHM/ICMH  
Microfiche  
Series.**

**CIHM/ICMH  
Collection de  
microfiches.**



Canadian Institute for Historical Microreproductions / Institut canadien de microreproductions historiques

**© 1987**

Technical and Bibliographic Notes/Notes techniques et bibliographiques

The Institute has attempted to obtain the best original copy available for filming. Features of this copy which may be bibliographically unique, which may alter any of the images in the reproduction, or which may significantly change the usual method of filming, are checked below.

L'Institut a microfilmé le meilleur exemplaire qu'il lui a été possible de se procurer. Les détails de cet exemplaire qui sont peut-être uniques du point de vue bibliographique, qui peuvent modifier une image reproduite, ou qui peuvent exiger une modification dans la méthode normale de filmage sont indiqués ci-dessous.

- Coloured covers/  
Couverture de couleur
- Covers damaged/  
Couverture endommagée
- Covers restored and/or laminated/  
Couverture restaurée et/ou pelliculée
- Cover title missing/  
Le titre de couverture manque
- Coloured maps/  
Cartes géographiques en couleur
- Coloured ink (i.e. other than blue or black)/  
Encre de couleur (i.e. autre que bleue ou noire)
- Coloured plates and/or illustrations/  
Planches et/ou illustrations en couleur
- Bound with other material/  
Relié avec d'autres documents
- Tight binding may cause shadows or distortion  
along interior margin/  
La reliure serrée peut causer de l'ombre ou de la  
distorsion le long de la marge intérieure
- Blank leaves added during restoration may  
appear within the text. Whenever possible, these  
have been omitted from filming/  
Il se peut que certaines pages blanches ajoutées  
lors d'une restauration apparaissent dans le texte,  
mais, lorsque cela était possible, ces pages n'ont  
pas été filmées.
- Additional comments:/  
Commentaires supplémentaires:

- Coloured pages/  
Pages de couleur
- Pages damaged/  
Pages endommagées
- Pages restored and/or laminated/  
Pages restaurées et/ou pelliculées
- Pages discoloured, stained or foxed/  
Pages décolorées, tachetées ou piquées
- Pages detached/  
Pages détachées
- Showthrough/  
Transparence
- Quality of print varies/  
Qualité inégale de l'impression
- Includes supplementary material/  
Comprend du matériel supplémentaire
- Only edition available/  
Seule édition disponible
- Pages wholly or partially obscured by errata  
slips, tissues, etc., have been refilmed to  
ensure the best possible image/  
Les pages totalement ou partiellement  
obscurcies par un feuillet d'errata, une pelure,  
etc., ont été filmées à nouveau de façon à  
obtenir la meilleure image possible.

This item is filmed at the reduction ratio checked below/  
Ce document est filmé au taux de réduction indiqué ci-dessous.

10X	12X	14X	16X	18X	20X	22X	24X	26X	28X	30X	32X
				✓							

The copy filmed here has been reproduced thanks to the generosity of:

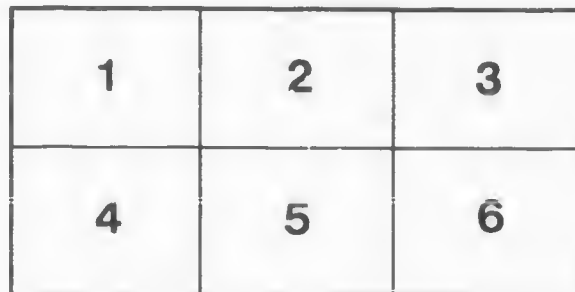
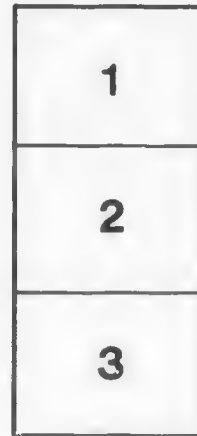
Harold Campbell Vaughan Memorial Library  
Acadia University

The images appearing here are the best quality possible considering the condition and legibility of the original copy and in keeping with the filming contract specifications.

Original copies in printed paper covers are filmed beginning with the front cover and ending on the last page with a printed or illustrated impression, or the back cover when appropriate. All other original copies are filmed beginning on the first page with a printed or illustrated impression, and ending on the last page with a printed or illustrated impression.

The last recorded frame on each microfiche shell contains the symbol  $\rightarrow$  (meaning "CONTINUED"), or the symbol  $\nabla$  (meaning "END"), whichever applies.

Maps, plates, charts, etc., may be filmed at different reduction ratios. Those too large to be entirely included in one exposure are filmed beginning in the upper left hand corner, left to right and top to bottom, as many frames as required. The following diagrams illustrate the method:



L'exemplaire filmé fut reproduit grâce à la générosité de:

Harold Campbell Vaughan Memorial Library  
Acadia University

Les images suivantes ont été reproduites avec le plus grand soin, compte tenu de la condition et de la netteté de l'exemplaire filmé, et en conformité avec les conditions du contrat de filmage.

Les exemplaires originaux dont la couverture en papier est imprimée sont filmés en commençant par le premier plat et en terminant soit par la dernière page qui comporte une empreinte d'impression ou d'illustration, soit par le second plat, selon le cas. Tous les autres exemplaires originaux sont filmés en commençant par la première page qui comporte une empreinte d'impression ou d'illustration et en terminant par la dernière page qui comporte une telle empreinte.

Un des symboles suivants apparaît sur la dernière image de chaque microfiche, selon le cas: le symbole  $\rightarrow$  signifie "A SUIVRE", le symbole  $\nabla$  signifie "FIN".

Les cartes, planches, tableaux, etc., peuvent être filmés à des taux de réduction différents. Lorsque le document est trop grand pour être reproduit en un seul cliché, il est filmé à partir de l'angle supérieur gauche, de gauche à droite, et de haut en bas, en prenant le nombre d'images nécessaire. Les diagrammes suivants illustrent la méthode.



In Memoriam.

A

920

D 59

A

286M

PD59





— In Memoriam —

Rev. D. W. DIMOCK, M. A.,

Died Oct. 13th, 1896.

Written on the Sunday after his departure

By a member of Emanuel Church.



*In Memory of the late*  
**Rev. D. W. Dimock,**  
*On the Sunday after his departure.*

By a member of Emanuel Church.



WELL known form we miss from church to-day;  
A form—not bowed with years—although the years  
were there  
But straight and lithe—as many a younger man;  
A face—so KIND—though marked by time and care.

We miss a well-known footstep on the aisle;  
No thud of age—although old age was there;  
But tread elastic, light—as quietly  
He used to enter—then ascend the stair.

His chair is vacant where so oft he sat;  
Vacant?—Ah! No—the sable pall is there  
Telling the sad, sad story—he has gone  
The way of all the earth—while echo answers WHERE?

The ivy twined above it makes reply  
Life—everlasting life! beyond the tomb!  
Oh! friends, how loudly do these emblems say  
The call will next be made; for whom?—for whom?

We miss the dear familiar voice—'twas sweet—not strong  
As in a quiet reverential way  
He would approach the sacred desk, and then  
Would utter solemnly his "LET US PRAY."



And what a prayer! Into the presence of the King of Kings  
We feel our spirits fairly borne aloft,  
While low in adoration at God's throne,  
The pleader's voice oft fell, in cadence soft.

It surely was familiar ground to him;  
He surely pleaded as no stranger there;  
But talked with God—as Moses—face to face—  
While scarce a breath disturbed the stillness of the air.

Again,—It was the Supper of our risen Lord:  
And he the emblem offered—broken bread;  
We listened to his discourse at the feast,  
And felt our spirits by Communion fed.

And now, no more to us—as in the past—he'll come;  
No more he'll greet us with his pleasant smile!  
Our father-pastor—we are sad because  
That with us thou could'st not have tarried, yet a little while

May it be our's—when our turn comes to go—  
To leave behind, a record—pure as thine;  
The "memory of the just"—which ever bright—  
And brighter still—e'en unto perfect day—shall shine.

Till then farewell!—when our life's duty's done  
When all our many burdens—we can bear no more;  
Reunion!—blest—reunion—may it be  
For all of us—upon that other shore.

L. A. E.



