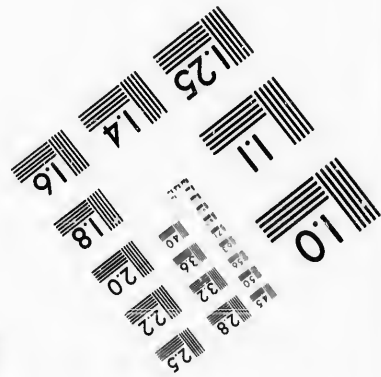
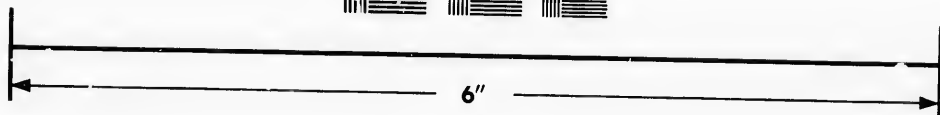
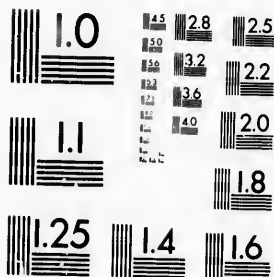


**IMAGE EVALUATION
TEST TARGET (MT-3)**



**Photographic
Sciences
Corporation**

23 WEST MAIN STREET
WEBSTER, N.Y. 14580
(716) 872-4503

**CIHM/ICMH
Microfiche
Series.**

**CIHM/ICMH
Collection de
microfiches.**



Canadian Institute for Historical Microreproductions / Institut canadien de microreproductions historiques

© 1986

Technical and Bibliographic Notes/Notes techniques et bibliographiques

The Institute has attempted to obtain the best original copy available for filming. Features of this copy which may be bibliographically unique, which may alter any of the images in the reproduction, or which may significantly change the usual method of filming, are checked below.

L'Institut a microfilmé le meilleur exemplaire qu'il lui a été possible de se procurer. Les détails de cet exemplaire qui sont peut-être uniques du point de vue bibliographique, qui peuvent modifier une image reproduite, ou qui peuvent exiger une modification dans la méthode normale de filmage sont indiqués ci-dessous.

- | | |
|---|---|
| <input type="checkbox"/> Coloured covers/
Couverture de couleur | <input type="checkbox"/> Coloured pages/
Pages de couleur |
| <input type="checkbox"/> Covers damaged/
Couverture endommagée | <input type="checkbox"/> Pages damaged/
Pages endommagées |
| <input type="checkbox"/> Covers restored and/or laminated/
Couverture restaurée et/ou pelliculée | <input type="checkbox"/> Pages restored and/or laminated/
Pages restaurées et/ou pelliculées |
| <input type="checkbox"/> Cover title missing/
Le titre de couverture manque | <input checked="" type="checkbox"/> Pages discoloured, stained or foxed/
Pages décolorées, tachetées ou piquées |
| <input type="checkbox"/> Coloured maps/
Cartes géographiques en couleur | <input type="checkbox"/> Pages detached/
Pages détachées |
| <input type="checkbox"/> Coloured ink (i.e. other than blue or black)/
Encre de couleur (i.e. autre que bleue ou noire) | <input checked="" type="checkbox"/> Showthrough/
Transparence |
| <input type="checkbox"/> Coloured plates and/or illustrations/
Planches et/ou illustrations en couleur | <input type="checkbox"/> Quality of print varies/
Qualité inégale de l'impression |
| <input type="checkbox"/> Bound with other material/
Relié avec d'autres documents | <input type="checkbox"/> Includes supplementary material/
Comprend du matériel supplémentaire |
| <input type="checkbox"/> Tight binding may cause shadows or distortion along interior margin/
La reliure serrée peut causer de l'ombre ou de la distorsion le long de la marge intérieure | <input type="checkbox"/> Only edition available/
Seule édition disponible |
| <input type="checkbox"/> Blank leaves added during restoration may appear within the text. Whenever possible, these have been omitted from filming/
Il se peut que certaines pages blanches ajoutées lors d'une restauration apparaissent dans le texte, mais, lorsque cela était possible, ces pages n'ont pas été filmées. | <input type="checkbox"/> Pages wholly or partially obscured by errata slips, tissues, etc., have been refilmed to ensure the best possible image/
Les pages totalement ou partiellement obscurcies par un feuillet d'errata, une pelure, etc., ont été filmées à nouveau de façon à obtenir la meilleure image possible. |
| <input checked="" type="checkbox"/> Additional comments: [Printed ephemera] [4] p.
Commentaires supplémentaires: | |

This item is filmed at the reduction ratio checked below/
Ce document est filmé au taux de réduction indiqué ci-dessous.

10X	12X	14X	16X	18X	20X	22X	24X	26X	28X	30X	32X
									✓		

The copy filmed here has been reproduced thanks to the generosity of:

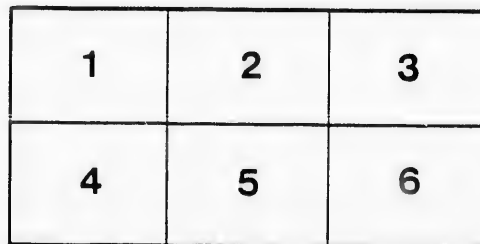
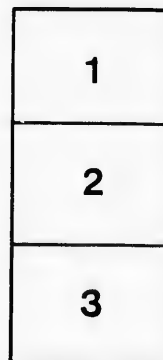
D. B. Weldon Library
University of Western Ontario
(Regional History Room)

The images appearing here are the best quality possible considering the condition and legibility of the original copy and in keeping with the filming contract specifications.

Original copies in printed paper covers are filmed beginning with the front cover and ending on the last page with a printed or illustrated impression, or the back cover when appropriate. All other original copies are filmed beginning on the first page with a printed or illustrated impression, and ending on the last page with a printed or illustrated impression.

The last recorded frame on each microfiche shall contain the symbol \rightarrow (meaning "CONTINUED"), or the symbol ∇ (meaning "END"), whichever applies.

Maps, plates, charts, etc., may be filmed at different reduction ratios. Those too large to be entirely included in one exposure are filmed beginning in the upper left hand corner, left to right and top to bottom, as many frames as required. The following diagrams illustrate the method:



L'exemplaire filmé fut reproduit grâce à la générosité de:

D. B. Weldon Library
University of Western Ontario
(Regional History Room)

Les images suivantes ont été reproduites avec le plus grand soin, compte tenu de la condition et de la netteté de l'exemplaire filmé, et en conformité avec les conditions du contrat de filmage.

Les exemplaires originaux dont la couverture en papier est imprimée sont filmés en commençant par le premier plat et en terminant soit par la dernière page qui comporte une empreinte d'impression ou d'illustration, soit par le second plat, selon le cas. Tous les autres exemplaires originaux sont filmés en commençant par la première page qui comporte une empreinte d'impression ou d'illustration et en terminant par la dernière page qui comporte une telle empreinte.

Un des symboles suivants apparaîtra sur la dernière image de chaque microfiche, selon le cas: le symbole \rightarrow signifie "A SUIVRE", le symbole ∇ signifie "FIN".

Les cartes, planches, tableaux, etc., peuvent être filmés à des taux de réduction différents. Lorsque le document est trop grand pour être reproduit en un seul cliché, il est filmé à partir de l'angle supérieur gauche, de gauche à droite, et de haut en bas, en prenant le nombre d'images nécessaire. Les diagrammes suivants illustrent la méthode.

MICHIGAN, OHIO
CANADIAN CIRCUIT
EIGHTEEN
THEATRES

CLEVELAND, CINCINNATI, BUFFALO,
DETROIT, TORONTO,
TOLEDO, LONDON, HAMILTON,
WOODSTOCK, BAGINAW,
GRAND RAPIDS, BAY CITY AND
JACKSON.



C. J. WHITNEY. A. E. ROOTE. ONTARIO.
LESSEE. MANAGER



W. SMITH.

E. HOLLAND.

W. S. PARTRIDGE.

SMITH & BROS.

THE
LEADING
SANITARY
PLUMBERS
AND
HEATING
ENGINEERS
OF
WESTERN
ONTARIO.

376
RICHMOND STREET,

LONDON.

OPPOSITE GRAND OPERA HOUSE BUILDING.

A full stock of Supplies always on hand.

TELEPHONE 538.

LADIES! THE ONLY WAY TO GET HELP IS THROUGH THE "FREE PRESS" WANT COLUMN.



**Parisian
Steam
Laundry**

73 & 75 DUNDAS STREET.

BRANCH OFFICES:

226 Dundas St. 752 Waterloo. 410 Hamilton St.
230 " " 572 Pall Mall. 211 Wellington.
310 " " 359 Richmond. 338 Kidout.
632 " " 435 " "

J. K. SPRY, Manager.

HUESTON'S

**LIVERY,
Coupe & Cab Stables**
WELLINGTON STREET.

Finest Horses and Carriages in the City.
OPEN DAY AND NIGHT. TELEPHONE 441.

ROBT. HUESTON,
Proprietor.

H. McKENNA,
—FOR—

Choice Cigars, Tobaccos
AND PIPES.

ALWAYS OPEN
..... AFTER THE OPERA.

225 DUNDAS STREET.

SPRING



1894.

WE have just received the finest assortment of Spring Hats ever shown in the city. We are leaders for correct shape, try us. A pleasure to show goods.

Rivard

LONDON'S FASHIONABLE HATTER AND FURRIER AND
400 RICHMOND STREET.

WILLIAMS' Pianos CANADA'S FAVORITE

Cannot be excelled for touch, singing quality, delicacy and great power of tone, with highest excellence of workmanship.

ALL THE LATEST VOCAL AND INSTRUMENTAL MUSIC RECEIVED AS PUBLISHED.

Musical Instruments of all kinds, Strings and Fittings AT LOWEST PRICES.

R. S. WILLIAMS & SON, 171 DUNDAS STREET, LONDON, ONT.
J. A. CRODEN, Manager.

« PROGRAMME »

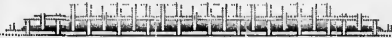
Thursday, ...

May 10th.

1894

— MATINEE and NIGHT. —

The Great Laugh Provoker,



DR. BILL



From the Garden Theatre, New York.

(Programme continued on next page)

SOMETHING NEW.

Opera English & Canadian
Caramels. Chocolate Creams.

VERY FINEST French Crystalized FRUITS. Olives in Bulk.
.. Fresh Roquefort Cheese..

FITZGERALD, SCANDRETT & CO.
139 Dundas Street.

ESTABLISHED 1831.

**H. DAVIS & SON,
WATCHMAKERS
AND
JEWELLERS**

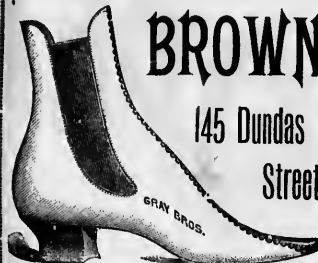
DEALERS IN
Watches, Clocks, Jewellery, Spectacles,
Silver Plated Ware, &c.

170 DUNDAS ST., LONDON, ONT.

W. T. STRONG

Dispensing
Chemist,

184 Dundas Street,
LONDON, - ONTARIO.



BROWN

145 Dundas
Street.

The reputation enjoyed by Brown's Shoe Store as the leader in

First-class, Stylish, - -
- - Fine Footwear
has been well earned.

In our 1894 SPRING and SUMMER Stock we have a large assortment of the most handsome and artistic designs in

LADIES' AND GENTLEMEN'S

→ DRESS AND WALKING SHOES ←

We have full lines of Staple goods of the highest grade; guarantee the best results, and are in a position to sell lower than any other house in this City. : : : : :

MOTHERS SHOULD NOT FAIL TO SEE OUR "School Boots" & "Baby Moccasins"

Experts Say: "Brown's Bicycle and Tennis Shoes are the best out."

Sole Agent FOR THE Celebrated Douglas Shoes.

BROWN

TELEPHONE 881.

IF YOU WANT THE BEST TAKE THE "FREE PRESS." ALL THE NEWS!

IF YOU SEE IT IN THE "LONDON FREE PRESS," IT IS SO!

— TRY —
SOUTHCOTT'S
 Nice Suit
 Fancy Vest
 or Trousers
 NEAT LINE OF LIGHT-WEIGHT OVERCOATINGS IN STOCK.
 Satisfaction Assured. Prices Right
361 RICHMOND STREET.

LATEST
 JUST OPENED
American Knots
 25c. to 50c.
 Glendowe English Collars Reduce to 20c.
GRAHAM BROS.

Wm. Stevely & Son,
 — THE LEADING DEALERS IN —
STOVES, RANGES,
 .. AND ..
HOUSE FURNISHING GOODS.
 OUR STOCK IS THE LARGEST.
 OUR PRICES THE LOWEST.
362 RICHMOND STREET.
 'PHONE 482.

I-I-I-I-I-I-I-I-I-I

PRINTERS
 LITHOGRAPHERS
 ENGRAVERS

The
London
Printing and
Lithographing
Co'y,

SUCCESSORS TO FREE PRESS
 PRINTING AND LITHO.
 DEPARTMENTS.

OFFICE,
 "FREE PRESS"
 BUILDING.

BEST WORK
 AT MODERATE
 PRICES.

I-I-I-I-I-I-I-I-I-I

TEGUMSEH HOUSE
 LONDON.



Directly opposite G.T.R. depot;
 street railway past the doors;
 convenient to all the wholesale
 and retail business houses of
 city, making it the most desir-
 able hotel in the city; elevator,
 and heated throughout with
 steam.

Porter in attendance on
 arrival of all trains.

RATES, \$2.00 AND \$2.50
 PER DAY,

ACCORDING TO LOCATION.

No Extra Charge For Baggage.

C. W. DAVIS, PROP.

«Programme Continued.»

CAST OF CHARACTERS.

Mrs. Horton, ex-queen of the ballet, with songs and recitations..... Celie Ellis
 Mrs. Brown, the confiding wife..... Celia Clay
 Mrs. Firmin, a "firm 'un" by nature as well as name..... Marie Bingham
 Kitty Fauntleroy, of the Frivolity Theatre, introducing the Kangaroo and Grasshopper Dances... Alice Trudell
 Miss Firmin, a debutante..... Minna Gunnett
 Ellen, maid to Mrs. Horton. }
 William Brown, M. D., familiarly known as "Dr. Bill," who wants to settle down and forget the past..... Clarence Heritage
 Mr. Firmin, the meddlesome father-in-law who believes idleness is the mother of mischief... Edward Grace
 Geo. Webster, the cause of all the trouble... Franclyn Hurlleigh
 Mr. Horton, Inspector of Police..... Clarence Bellair
 Baggs, servant to the Browns..... Vaughn Montgomery

SYNOPSIS.

The scenes of the play are laid in London. The time, to-day.
 ACT I.—Booning business. At Dr. Brown's—Morning, A Birthday, a Surprise and a Dance.
 ACT II.—Effects of the Boom. At Mrs. Horton's—Afternoon. A Joke, a Painting Fit and a Shower Bath.
 ACT III.—The Boom Bursts. At Dr. Brown's—The Next Morning. A Dose of Poison, an Arrest and a General Explanation.

EXECUTIVE STAFF.

E. T. Wilson..... Manager.
 J. F. Arnold..... Business Manager.
 Edward Grace..... Stage Manager.

(Programme continued on last page.)

McLEAN'S HARDWARE

— FOR —

Bissell's Carpet Sweepers.

WE CAN SHOW YOU TWELVE DIFFERENT STYLES SAME AS ARE NOW DISPLAYED BY THE BISSELL COMPANY AT THE WORLD'S FAIR.

CALL AND SEE THESE GOODS

— AT —

McLEAN'S HARDWARE,
 151 Dundas Street.

W. T. STRONG,
Dispensing
Chemist,
184 DUNDAS ST.,
 LONDON, ONT.

.. FOR ..
Fine Etchings....
 —AND—
Engravings
 —TRY—
O. B. GRAVES,
 222 DUNDAS STREET.

**A WONDER-
 WORKING**

Quarter!

— IS A —

25 CENT PIECE

INVESTED IN **3 Elegant**

GROTTO

BOUQUET

CIGARS

OF QUALITY AND AROMA, MADE OF EXCELLENT

HABANA FILLER,

Very Mild and Delicious.

BRENER BROS.

LOOK OUT FOR THE "LONDON FREE PRESS" ON ALL EARLY MORNING TRAINS.

COMING

The . . .
Fencing Master

... WITH ...
... MARIE TEMPEST, ...

And Original Company.

At the Opera Box Office.
MRS. NEWGOLD (at the box office).—Are opera seats on sale here?

TICKET SELLER.—Yes, Ma'am.

MRS. NEWGOLD.—Well, what night do Lohengrin and Carmen sing together?—Chicago Record.

As He Liked It.

UNSOPHISTICATED YOUTH (at the box-office).—"I'll take two seats for to-morrow night. What are they going to play?"

TREASURER WALTERS—"As You Like It."

U. V.—"As I Like It? Well, if it's all the same, you can put me down for Romeo and Joolyut."—St. Louis Republican.

FIND YOUR FORTUNE IN LUCKY
SANTO DOMINGO

INVESTED BONDS guaranteed by the **SANTO DOMINGO GUARANTY CO.**

Allotments take place monthly, and are payable in U. S. gold coin in sums of \$180,000, \$40,000, \$20,000, etc.
5,892 Bonds paid monthly, aggregating \$674,880. Subscription fees, \$10, \$5, \$2, \$1, 50c. and 25c.

Apply to Local Agents, or address,

ANTONIO MORA, CITY OF SANTO DOMINGO,
SANTO DOMINGO.

EDY BROS.

The Artistic Photographers,

—RECEIVED—

Three First Prizes

—AND—

DIPLOMA

For Finest Display of Photography
AT WESTERN FAIR, 1893.

Cabinet Photos, \$3 per doz.

EDY BROS.,

214 DUNDAS STREET.

THE FICKLE PUBLIC.

When melodrama holds the stage,
The people for the mins rels rage.

And when the troubadours are starred,
Their fancy turns to Avon's hard.

But when the house with Shakespeare's filled,
They want to see the opera billed.

Then when the opera fills the house,
They call for farce "mit Saus und Braus."

And so it goes; and it's a race
Twixt manager and populace.

For, spite of broad and varied range
The fickle people always change.

And always quit the best to see
Some stupid meeting, billed as "Free."

«Programme Concluded.»

During the evening, incidental to the stage performance the ORCHESTRA of the Grand Opera House, under the direction of MR. FRED. L. EVANS, will perform the following selections

OVERTURE—"Norma,"..... Bellini
POLONAISE—Wedding,..... Leutner
HUNGARIAN DANCES,..... Moszkowsky
GALOP—"Cricket,"..... Weingarten
The above programme subject to transposition

N. B.—The Orchestra of the Grand Opera House may be secured for engagements outside the theatre, by applying at or addressing the Box Office.

The Furniture used on stage is supplied by JOHN FERGOUSON & SON, Furniture Manufacturers.

NEXT * ATTRACTION.

FRIDAY, MAY 11TH.

The First Appearance of

THE FENCING MASTER

—BY—

THE WHITNEY OPERA COMPANY,

—WITH—

Miss Marie Tempest,

AS PERFORMED AT THE
CASINO,

Over 250 Times.

GRAND CHORUS—50 VOICES.
INCREASED ORCHESTRA.
ORIGINAL SCENERY, COSTUMES,
PROPERTIES, Etc.

FRED. C. WHITNEY, Director.

COMING
ATTRACTIONS

Are always a source of interest,—theatrical or otherwise. Our attraction just now is the new coal we are receiving daily. It comes direct from the mines, in box cars; is clean, dry, and strictly first-class. All orders, large or small, will receive our prompt and careful attention. Offices, 421 Richmond St., and 316 Burwell St. A. D. Cameron & Son.

WE call the attention of our business men to the PROGRAM as an advertising medium. It reaches the class of people whose trade you want, and the way to get that trade is to make yourself known.

BELTON & ROOTE,
BILL POSTING,
DISTRIBUTING
...AND...
GENERAL ADVERTISING AGENTS

Control all the Bill Boards and Dead Walls throughout the City. Population of City, 40,000

All orders for Bill Posting, Distributing Card Tacking, and General Advertising for Western Ontario will receive prompt attention.

OFFICE: BOX OFFICE, OPERA HOUSE.

Roses, Carnations,

Palms,

Ferns, Bulbs,

J. GAMMAGE & SONS,

213 Dundas Street.

COMING:

—FRIDAY, MAY 11TH.—

The Fencing Master

—WITH—

MARIE TEMPEST

And Original Company.

