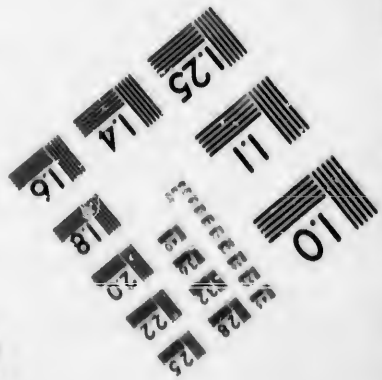
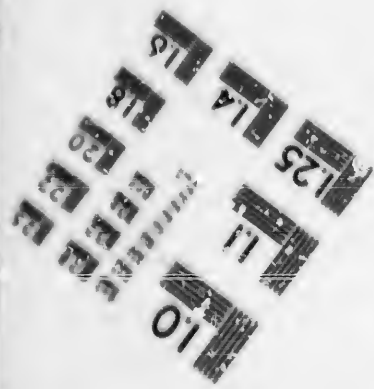
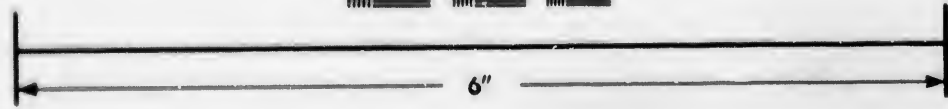
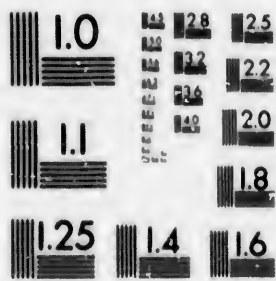


**IMAGE EVALUATION  
TEST TARGET (MT-3)**



**Photographic  
Sciences  
Corporation**

23 WEST MAIN STREET  
WEBSTER, N.Y. 14580  
(716) 872-4503

**CIHM/ICMH  
Microfiche  
Series.**

**CIHM/ICMH  
Collection de  
microfiches.**



**Canadian Institute for Historical Microreproductions / Institut canadien de microreproductions historiques**

**© 1985**

Technical and Bibliographic Notes/Notes techniques et bibliographiques

The institute has attempted to obtain the best original copy available for filming. Features of this copy which may be bibliographically unique, which may alter any of the images in the reproduction, or which may significantly change the usual method of filming, are checked below.

L'institut a microfilmé le meilleur exemplaire qu'il lui a été possible de se procurer. Les détails de cet exemplaire qui sont peut-être uniques du point de vue bibliographique, qui peuvent modifier une image reproduite, ou qui peuvent exiger une modification dans la méthode normale de filmage sont indiqués ci-dessous.

- Coloured covers/  
Couverture de couleur
- Covers damaged/  
Couverture endommagée
- Covers restored and/or laminated/  
Couverture restaurée et/ou pelliculée
- Cover title missing/  
Le titre de couverture manque
- Coloured maps/  
Cartes géographiques en couleur
- Coloured ink (i.e. other than blue or black)/  
Encre de couleur (i.e. autre que bleue ou noire)
- Coloured plates and/or illustrations/  
Planches et/ou illustrations en couleur
- Bound with other material/  
Relié avec d'autres documents
- Tight binding may cause shadows or distortion  
along interior margin/  
La reliure serrée peut causer de l'ombre ou de la  
distortion le long de la marge intérieure
- Blank leaves added during restoration may  
appear within the text. Whenever possible, these  
have been omitted from filming/  
il se peut que certaines pages blanches ajoutées  
lors d'une restauration apparaissent dans le texte,  
mais, lorsque cela était possible, ces pages n'ont  
pas été filmées.
- Additional comments: /                      Pagination as follows : 141-144 p.  
Commentaires supplémentaires:

- Coloured pages/  
Pages de couleur
- Pages damaged/  
Pages endommagées
- Pages restored and/or laminated/  
Pages restaurées et/ou pelliculées
- Pages discoloured, stained or foxed/  
Pages décolorées, tachetées ou piquées
- Pages detached/  
Pages détachées
- Showthrough/  
Transparence
- Quality of print varies/  
Qualité inégale de l'impression
- Includes supplementary material/  
Comprend du matériel supplémentaire
- Only edition available/  
Seule édition disponible
- Pages wholly or partially obscured by errata  
slips, tissues, etc., have been refilmed to  
ensure the best possible image/  
Les pages totalement ou partiellement  
obscurcies par un feuillet d'errata, une pelure,  
etc., ont été filmées à nouveau de façon à  
obtenir la meilleure image possible.

This item is filmed at the reduction ratio checked below/  
Ce document est filmé au taux de réduction indiqué ci-dessous.

10X	14X	18X	22X	26X	30X
<input type="checkbox"/>	<input type="checkbox"/>	<input type="checkbox"/>	<input type="checkbox"/>	<input checked="" type="checkbox"/>	<input type="checkbox"/>
12X	16X	20X	24X	28X	32X

The copy filmed here has been reproduced thanks to the generosity of:

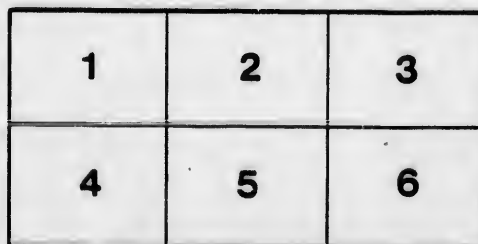
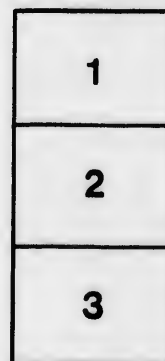
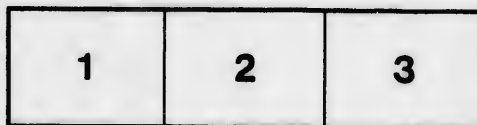
D. B. Weldon Library  
University of Western Ontario  
(Regional History Room)

The images appearing here are the best quality possible considering the condition and legibility of the original copy and in keeping with the filming contract specifications.

Original copies in printed paper covers are filmed beginning with the front cover and ending on the last page with a printed or illustrated impression, or the back cover when appropriate. All other original copies are filmed beginning on the first page with a printed or illustrated impression, and ending on the last page with a printed or illustrated impression.

The last recorded frame on each microfiche shall contain the symbol  $\rightarrow$  (meaning "CONTINUED"), or the symbol  $\nabla$  (meaning "END"), whichever applies.

Maps, plates, charts, etc., may be filmed at different reduction ratios. Those too large to be entirely included in one exposure are filmed beginning in the upper left hand corner, left to right and top to bottom, as many frames as required. The following diagrams illustrate the method:



L'exemplaire filmé fut reproduit grâce à la générosité de:

D. B. Weldon Library  
University of Western Ontario  
(Regional History Room)

Les images suivantes ont été reproduites avec le plus grand soin, compte tenu de la condition et de la netteté de l'exemplaire filmé, et en conformité avec les conditions du contrat de filmage.

Les exemplaires originaux dont la couverture en papier est imprimée sont filmés en commençant par le premier plat et en terminant soit par la dernière page qui comporte une empreinte d'impression ou d'illustration, soit par le second plat, selon le cas. Tous les autres exemplaires originaux sont filmés en commençant par la première page qui comporte une empreinte d'impression ou d'illustration et en terminant par la dernière page qui comporte une telle empreinte.

Un des symboles suivants apparaîtra sur la dernière image de chaque microfiche, selon le cas: le symbole  $\rightarrow$  signifie "A SUIVRE", le symbole  $\nabla$  signifie "FIN".

Les cartes, planches, tableaux, etc., pouvant être filmés à des taux de réduction différents. Lorsque le document est trop grand pour être reproduit en un seul cliché, il est filmé à partir de l'angle supérieur gauche, de gauche à droite, et de haut en bas, en prenant le nombre d'images nécessaire. Les diagrammes suivants illustrent la méthode.

ire  
détails  
es du  
modifier  
er une  
filmage

es

e

errata  
d to  
t  
a pelure,  
on à



## RETURN

Of the Average Liabilities and Assets of The Commercial Bank of the Midland District, published in conformity with Act 18 Vic. Cap. 42.

1855.	LIABILITIES.	£.	s.	d.
31st January.	Promissory Notes in Circulation not bearing interest.....	487,583	10	0
	Bills of Exchange in Circulation not bearing interest.....			
	Bills and Notes in Circulation bearing interest.....			
	Balances due to other Banks and Foreign Agents.....	22,657	6	10
	Cash deposited bearing interest.....	257,851	13	8
	Cash deposited not bearing interest.....	143,037	5	4
		£	911,129	15 10
	<b>ASSETS.</b>			
	Coin and Bullion.....	98,164	16	10
	Landed and other Property.....	28,207	4	3
	Government Securities.....	65,091	13	4
	Promissory Notes or Bills of other Banks.....	31,885	11	6
	Balances due by other Banks and Foreign Agents.....	104,597	1	6
	Notes discounted and all other debts due to the Bank not included under the foregoing heads.....	1,283,325	16	9
		£	1,611,272	4 2

C. S. ROSS,  
Cashier.

Commercial Bank, M. D.  
Kingston, 5th February, 1855.

109-1

**COBOURG AND PETERBORO' RAILWAY COMPANY.**

NOTICE is hereby given that in pursuance of the Law, a General Meeting of the Shareholders in the Cobourg and Peterboro' Railway Company will be held on MONDAY, the TWENTY-SIXTH day of FEBRUARY next, at TWELVE o'clock noon, in their Office, at Cobourg, for the purpose of electing Nine Directors for the ensuing year.

DAVID BURN, Secretary.

Cobourg, 20th January, 1855. 58-5

Ten per cent on the 20th September, 1854,  
Ten per cent on the 20th October, "  
Ten per cent on the 20th November, "  
Ten per cent on the 20th December, "  
Ten per cent on the 20th January, 1855.

By order of the Board.

FRANCIS LALOR, Secretary.

Office of the P. D. & T. R. R. Co.  
St. Catharines, 15th August, 1854.

804

**MONTREAL MINING COMPANY.**

NOTICE is hereby given that the Ninth Annual General Meeting of the Stockholders of the Montreal Mining Company, will be held at the Office of the Corporation on WEDNESDAY, the TWENTY-FIRST day of FEBRUARY next, at ONE o'clock P. M., to elect Directors for the ensuing year, and generally to transact the business of the Company.

By order, ADAM HANDYSIDE, Secretary.

Montreal, 15th January, 1855. 25-5

**ONTARIO MARINE AND FIRE INSURANCE COMPANY.**

Hamilton, 27th December, 1854.

NOTICE is hereby given that a Call of five per cent on the Capital Stock of this Company has been made, and the same is hereby required to be paid on MONDAY, the TWELFTH day of MARCH next ensuing, at the Office of the Company in Hamilton, the Gore Bank or any of the Agencies of either Institution.

By order of the Board,

1177-10 WILLIAM POWIS, Secretary.

**THE CANADA OCEAN STEAM NAVIGATION COMPANY.**

Incorporated by Act of Parliament, 1851.

Trustees—WILLIAM WORKMAN,  
DAVID TORRANCE,  
ANDREW SHAW,  
IRA GOULD,  
JOHN KERSHAW, Esquires.

PUBLIC NOTICE is hereby given that the chief place of business of the above Company is in the City of Montreal, and the Office of the Company is at No. 5, Young's Buildings, in said City.

CHAS. GOULD, Secretary.

BADGLEY & ABBOTT, Solicitors.  
Montreal, 14th January, 1855. 33-5

**ONTARIO MARINE AND FIRE INSURANCE COMPANY.**

Hamilton, 4th December, 1854.

NOTICE is hereby given that a Call of five per cent on the Capital Stock of this Company has been made, and the same is hereby required to be paid on MONDAY, the TWELFTH FEBRUARY next ensuing, at the Office of the Company in Hamilton, the Gore Bank, or any of the Agencies of either Institution.

By order of the Board,

1100-10 WM. POWIS, Secretary.

**PORT DALHOUSIE AND TROLD RAILWAY.**

NOTICE is hereby given, that instalments to the amount of fifty per cent, on the Capital Stock of this Company, have this day been called in, payable at the office of the Treasurer, in St. Catharines, in the following proportions, to wit:

**ERRORS** having sometimes occurred in printing the NAMES OF PARTIES to official Advertisements in this Gazette, owing to ILLEGIBLE MANUSCRIPT sent for publication, it is particularly requested that all persons having occasion to advertise, will be careful in LEGIBLY TRANSCRIBING SUCH PROPER NAMES, so as to avoid mistakes and inconvenience in this respect.

SHERIFF'S SALE OF LANDS FOR TAXES.  
 County of Elgin, } I DO hereby give Public Notice,  
 to wit: } that in obedience to the Warrant  
 of the Treasurer of the said County, the lands hereinafter  
 mentioned will be sold by Public Auction, at the Court House,  
 in St. Thomas, on SATURDAY, the THIRTY-FIRST day of MARCH  
 next, at TEN o'clock A. M., for the taxes and charges due upon  
 the several lots mentioned, unless the same be sooner paid.

COLIN MUNRO,  
 Sheriff County of Elgin.

Sheriff's Office,  
 St. Thomas, 6th December, 1854.

TOWNSHIP OF ALDBOROUGH.

Description and Numbers of Lots.	Concessions.	Number of Acres.	Amount due on each Lot.
17 A	50 to 70	4 2 1/4	11
18 A	130	8 15 10	17
19 A	200	17 11 5	22
22 C	45	13 7 0	18
18	200	22 8 2	19
19	200	17 13 6	20
20	100	5 14 6	21
22	3 200	8 2 4	19
West half	4 100	9 6 0	6
West quarter	9 50	7 12 7	7
North-west half	7 100	0 18 6	13
South-east half	13 100	2 17 6	10
South half	17 100	11 0 5	13
South-east half	17 100	0 9 2	10
North-west half	17 100	0 15 5	10
South half	17 100	0 10 2 1/2	11
North-west half	17 100	0 0 0	11
South half	17 100	8 7 7	11
North-west half	17 100	5 19 7	11
North half	17 100	1 11 8	11
West half	17 100	2 19 5	11
South half	17 100	2 17 6	11
North-east quarter	12 50	0 16 4	12
South-east quarter	12 50	0 13 4	12
South half	12 50	0 7 10	12
South-east quarter	12 50	0 9 2	12
South-east half	12 50	2 18 2	12
South half	12 100	9 3 1	12
South-east half	12 100	4 7 2	12
North half	12 100	0 10 10	12
South-east half	12 100	3 14 6	12
North-west half	12 100	4 2 8	12
South-east half	12 100	2 4 2	12
South half	12 100	0 9 2	12
North-west quarter	13 50	4 4 8	13
North-east quarter	13 50	0 13 4	13
North-west quarter	13 50	3 7 7	13
North-west quarter	13 50	3 18 2	13
South half	14 90	2 17 10	14
South-east half	14 90		14
West part	14 100		14
West half	14 200		14

ALDBOROUGH WEST.

1 BF	100	11 19 4
3 B	15	1 11 3
8 B	50	1 1 11
10 B	100	5 1 11
11 B	94	3 4 7
11 B	20	0 15 0
12 B	26	0 5 8
East quarter	250	2 10 5
South half	1	4 8 7
North half	1	1 1 9
South half	1	5 5 11
North part	7	2 13 10
South part	8	6 16 6
South half	10	5 5 1
North half	10	11 7 4
North half	10	1 7 2
North half	11	1 1 9
South half	11	1 4 7
South-east half	12	3 17 6
West part	12	1 7 0
West half	13	2 13 8

Description and Numbers of Lots.	Concessions.	Number of Acres.	Amount due on each Lot.
North-east part	2 2	200	11 5 10
North half	2 2	50	
West half	2 2	200	6 13 7
South half	2 2	100	
South half	12 2	100	2 5 6
North half	12 2	100	0 10 4
South half	13 2	200	7 3 2
South half	13 2	100	4 15 2
North half	13 2	100	5 8 5
South half	13 2	200	2 4 8
South	8 3	113	2 0 8
West	8 3	87	
South-east half	9 3	100	1 1 9
North half	9 3	100	1 12 8
North half	17 3	200	17 16 5
South	15 3	200	5 10 0
West	14 3	200	0 19 8
North half	3 4	100	
South half	4 4	200	7 4 11
North half	3 4	100	
South half	4 4	200	2 14 6
North half	9 4	100	
South half	9 4	100	2 13 0
North half	10 4	200	
South half	10 4	200	5 10 6
North half	11 4	100	
South half	11 4	100	1 5 10
North half	7 4	100	
South half	7 4	200	2 5 10
North half	9 4	100	
South half	9 4	100	0 4 6
North half	10 4	200	0 10 3
South half	10 4	200	1 2 8
North half	11 4	200	
West half	11 4	100	
North-west quarter	5 5	50	
North-west quarter	5 5	50	
North-west quarter	5 5	100	1 1 9
North-west quarter	5 5	200	1 2 9
North-west half	4 5	200	1 16 4
East half	5 5	100	
North-west quarter	5 5	50	
East quarter	5 6	50	
West half	5 6	100	2 4 6
East half	6 5	100	4 13 1
North half	7 5	100	1 1 9
West half	8 5	100	0 13 4
South half	10 5	200	2 15 0
South half	11 5	200	10 13 4
South half	11 5	200	
South half	12 5	200	14 16 8
South half	12 5	100	
West half	3 5	300	2 15 0
South quarter	1 6	50	
South quarter	1 6	100	1 4 8
South-east part	12 6	116	1 7 6
D. Gore		28	
D. Gore		24	2 6 3

TOWNSHIP OF DUNWICH.

1 B F	BC	B	439	33 14 10
B F		B	51	

on Lot.	Description and Numbers of Lots.	Concessions.	Number of Acres.	Amount due on each Lot.
d.				£ s. d.
10 #		6 A	110	4 18 6
7		7 A	110	3 15 5
6		11 A	133	3 13 11
4		11 A	40	
2		11 A	200	
2	Part of	24 A	170	5 11 1
5		B F	105	10 4 4
8		1	200	1 1 9
9		3	1 200	2 6 6
8		3	1 15	6 1 7
9	North half	4	1 200	
8	South half	1	1 100	1 8 6
9	North half	7	1 100	0 0 0
8	South half	7	1 63	0 17 9
9	North half	8	1 200	5 0 4
8	South half	10	1 100	13 10 4
9	S. 1/2 and N. E. 1/4	11	1 100	2 10 3 1/2
8	North-west quarter	17	1 50	7 1 9
9		18	1 25	
4 11 #		21	1 185	5 19 6
4 6		23	1 100	2 12 4
3 0		2	2 100	0 10 11
		2	2 100	1 1 9
		4	2 100	0 8 4
		5	2 100	0 18 8
		5	2 100	1 12 8
		7	2 100	1 9 9
19 5		14	2 200	4 13 7
	South half	18	2 200	
5 10	North-east	18	2 100	4 9 4
		5	3 100	0 10 4
	North half	20	2 100	2 17 9
5 10		3	3 200	3 2 2
	South half	7	3 100	0 10 11
4 6	South half	11	2 100	2 4 5
10 3	North half	11	3 100	1 9 0
2 8	South half	13	3 200	1 0 7
	East half	14	3 100	1 9 0
	North half	15	3 100	0 10 4
	North half	23	3 100	0 10 4
11 3	North half	21	3 100	0 10 4
	Part of	1	4 169	12 1 3
	South half	11	4 100	4 0 9
		14	4 200	1 16 8
1 9	South half	16	4 100	7 5 2
2 9		21	1 200	6 13 5
16 4	Part of	C	4 50	13 7 1
	North part	C	4 150	
16 10			200	0 10 11
	North	13	5 100	
4 6	South half	14	5 100	1 18 3
13 1	North half	14	5 100	3 6 10
1 9	North half	17	5 100	0 10 11
10 4	South half	17	5 100	0 10 11
2 15 0		18	5 200	5 18 11
	North half	18	5 100	
0 13 4	North half	19	5 100	3 17 1
	South half	19	5 100	1 2 8
4 16 8		21	5 200	1 13 7
2 15 0	North half	23	5 100	0 10 11
	South half	23	5 100	0 10 11
1 4 8	South-east half	A	5 100	1 11 7
1 7 6		C	5 150	1 11 3
	North half	C	5 200	
		C	5 100	2 7 1
		A	200	
2 6 3	South half	15	A 100	2 4 5
	South-east quarter	A	A 100	3 15 11
			100	
			50	5 14 8
	South half	B A	100	

Description and Numbers of Lots.	Concessions.	Number of Acres.	Amount due on each Lot.
			£ s. d.
North half	B A	100	0 10 11
South-east half	C C A	100 } 50 } 22 }	4 10 4
North	A	5	0 18
West half	23	5	0 18 6
East half	23	5	0 18 6
SCHOOL SECTION.			
	24	5	2 2 10
South half	15	6	1 18 0
West half	15	6	2 19 9
North half	20	6	6 9 10
South half	20	6	2 9 3
North half	B C	100 } 130 }	1 5 9 5 7 7
South-east	12	6	0 5 5
South-east half	A	7	2 13 5
South half	5	8	3 17 8
South-east quarter	5	5	
no school lot	1	10	0 18 9 1/2
	1	10	
	12	11	0 7 7
	13	11	2 5 4
	14	11	2 19 9
	C	11	7 18 3
	C	11	

COLIN MUNRO, Sheriff of Elgin.

**Dissolutions.**

**DISSOLUTION.**—The partnership hitherto subsisting between the subscribers, under the name, style and firm of **JOHN ANDERSON & Co.**, has this day been dissolved by mutual consent.

All debts due by the late concern will be paid by **MR. ANDERSON**, who is authorized to collect all outstanding debts.

**JOHN ANDERSON,**  
**GEO. RAILTON.**

Quebec, 9th February, 1855.

**THE Firm of RICH and MADDESON**, carrying on business at Toronto and Hamilton as Land Agents and Brokers, was this day dissolved by mutual consent.

**A. W. RICH,**  
**G. L. MADDESON.**

**T. A. BEST,**  
**LEWIS NEWTON,** } Witnesses.  
24th January, 1855. 101-3

**NOTICE.**—The Partnership at present existing between the subscribers, under the firm of **WOOD, PETRY, POITRAS & Co.**, will terminate by limitation, and by the retirement from the firm of **Wm. Petry, Senior**, and **Wm. F. Wood**, on the Thirtieth April next. The affairs of the present firm will be wound up in liquidation by any one of the undersigned, and the business will from and after the **FIRST MAY NEXT** be conducted by, and for the sole account of **PIERRE R. POITRAS** and **Wm. Petry, Junr.**, under the same name and firm.

**WM. PETRY, Senr.**  
**WM. F. WOOD,**  
**WM. PETRY, JR.**  
**P. R. POITRAS,**  
**WM. PETRY, JR.**

By his Atty. 75-12

Quebec, 1st February, 1855.

**DISSOLUTION.**—The partnership heretofore existing between the undersigned as Manufacturers of Fanning Mills, &c., was this day dissolved by mutual consent. All debts to be settled by **H. King.**

**HIRAM KING,**  
**JOHN WAGSTAFF.**

Witness—**WALTER WAGSTAFF,**  
Dundas, 18th November, 1854. 1161-124

## Chancery Notices.

### CHANCERY SALE.

**T**O Be Sold by Public Auction, pursuant to a Decree and an Order of the Court of Chancery made in the cause of *McINTOSH vs. CHISHOLM*, with the approbation of *Andrew Norton Buell*, Esquire, Master of the said Court, by Peter Stewart, Esquire, at the Court House, in the Town of Cornwall, in the County of Stormont, on **THURSDAY**, the **FIRST** day of **MARCH** next, at the hour of **ONE** o'clock in the afternoon, in one lot, the lands and premises, with the appurtenances in the pleadings mentioned, being composed of the east half of lot number fifty-eight, and the whole of lot number fifty-nine, on the north side of the river *aux Raisins* (being the first concession north of the said river), in the township of Charlotterburgh, in the County of Glengarry, containing by admeasurement three hundred acres, more or less.

Particulars and conditions of sale may be had gratis on application at the Law Offices of Messrs. Wilson and Hector, and Messrs. McMichael and McCutcheon, of the Master of the said Court, of Peter Stewart, Esquire, and at the Office of the Honble. John S. McDonald, in the Town of Cornwall.

The Sale to be upon the terms and conditions provided by the General Orders of the said Court.

A. N. BUELL.  
46-5

Toronto, 16 h January, 1855.

## Applications to Parliament.

**N**OTICE is hereby given that Application will be made to the Provincial Parliament, at the meeting thereof in February next, for an Act to incorporate a Company by and under the name of "The Road Eau and St. Clair River Railway and Navigation Company," for the purpose of constructing a Railway from the Road Eau Harbour to some point on the St. Clair River, opposite the town of Newport in Michigan, with power to navigate the adjacent waters at the terminus of either end of the road, to hold steamboats and other vessels in connection with said road.

EDWIN LARWILL, M. P. P.  
Chatham, 22d January, 1855. 80-9

**N**OTICE is hereby given that application will be made by the Consumers' Gas Company, at the Adjourned Meeting of the House of Assembly, for power to increase the Capital Stock, and for other Amendments to the Charter.

By order of the Board,  
H. THOMPSON, Manager.  
Consumers' Gas Company.  
Toronto, 12th January, 1855. 51-9

**N**OTICE is hereby given that an application will be made to the Legislature of Canada, at its next Meeting in February, A. D. 1855, after the Adjournment, for an Act to incorporate a Company under the name of the Canada Iron and Mining Company, and to grant the said Company power to construct a Railway, Tramway, Macadamized, Plank or other Road from their Mines or Works on lot eleven, range seven, of the township of Hull, in the district and county of Ottawa, in Lower Canada, to either the Ottawa or Gatineau river, and also to construct Docks or Wharves at the termination of said Road on the Ottawa or Gatineau river.

JACOB FORSYTH,  
JOHN A. FORSYTH,  
JOHN A. FORSYTH, Jr.  
HENRY FORSYTH,  
WILLIAM H. FORSYTH  
Township of Hull, 20th December, 1854. 23-9

**N**OTICE is hereby given, that application will be made to the Provincial Parliament, at its meeting in February, one thousand eight hundred and fifty-five, after the adjournment, for an Act to incorporate a Company, by and under the name of The Kingston and Smith's Falls Railway Company, for

the purpose of constructing a Railway from the city of Kingston to the village of Smith's Falls, in the County of Lanark, with liberty to extend the same to Kemptville, or to some point at or near the Ottawa River.

JOHN FLANIGAN,  
Mayor of Kingston.  
Kingston, 4th December, 1854. 1142-9

**N**OTICE is hereby given that the undersigned will apply to Parliament during the present Session, at the Meeting thereof in February next, or so soon thereafter as the Rules of the House will permit, for an Act of Incorporation for the "St. Lawrence Insurance Company."

HENRY BARTHE,  
ANSELM MARMEN,  
AMABLE PELLETIER,  
BOIS FRÈRES,  
BABINEAU & GAUDRY.  
Quebec, 4th January, 1855. 9-3

**A**PPPLICATION will be made at the next Meeting of Parliament, to attach certain Concessions of the Township of Garafaxa to the Township of Nichol, for Municipal and other purposes.

Garafaxa, 13th December, 1854. 1148-9

**N**OTICE is hereby given, that application will be made to the Legislature, at its next Session, by the Great Western Railway Company, for an Act to authorize the said Company, to construct a Branch Railway, from some point on their Line of Railway at or near Fairchild's Creek, to Brantford, and also to amend the Charter of the Great Western Railway Company, and for other purposes.

JOHN O. HATT,  
Solicitor, G. W. R. W. C.  
12th August, 1854. 782-u

### KINGSEY SLATE WORKS.

**N**OTICE is hereby given that an application will be made to the Parliament of Canada, at its next Session, for an Act to incorporate the Kingsey Slate Works Company, and to authorize the said Company to construct a Railroad or Tram Road from some point on lot number four, in the first range of the township of Kingsey, to the St. Lawrence and Atlantic Railroad, and also to erect a Dam for hydraulic purposes, opposite or near said lot number four, across the river St. Francis.

Montreal, 11th January, 1854. 52-u

**P**UBLIC NOTICE is hereby given, that an application will be made to the Provincial Parliament, at its next Session, for an Act to incorporate a Joint Snek Company, to construct Wharves and Docks at the Current St. Mary and Hochelaga Bay, and to connect the same by a Canal or otherwise, running through the City of Montreal, with theachine Canal, and for other purposes.

W. BADGLEY,  
W. MOLSON,  
A. M. DELISLE,  
W. WORKMAN,  
N. DUMAS,  
JOHN BOSTON,  
JACQUES VIGER,  
I. J. C. ABBOTT.  
Montreal, 20th February, 1854. 702-u

**A**PPPLICATION will be made during the next Session of the Parliament of this Province, for an Act to incorporate into Town the Village of Industry, in the County of Joliette.

Industry, 4th August, 1854. 750-u

**T**AKE Notice that the British North American Electric Telegraph Association will, at the next Session of Parliament, apply for power to construct Branch Telegraph lines to connect with their main line, to increase their Capital Stock, and for amendments to their Act of Incorporation.

Quebec, 7th July, 1854. 672-u



