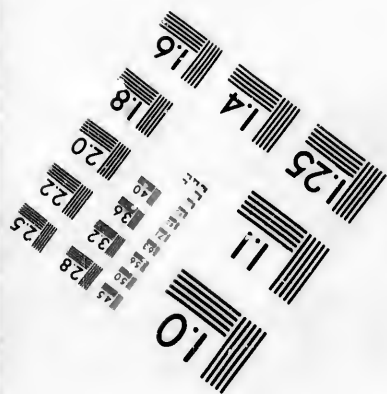
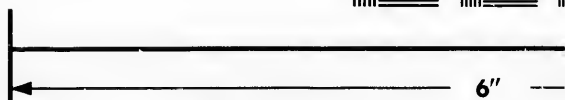
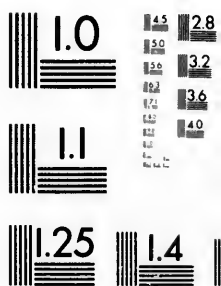
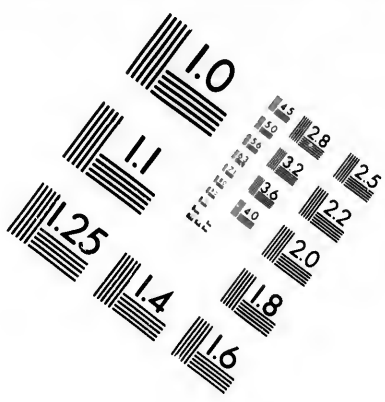


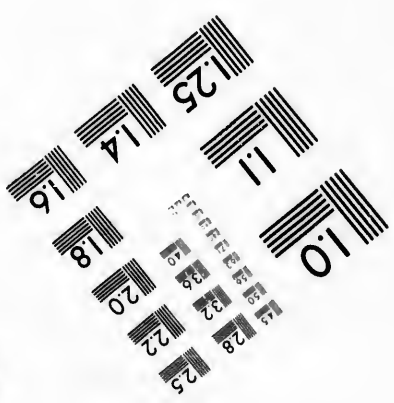
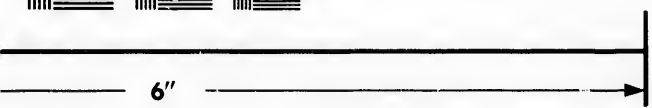
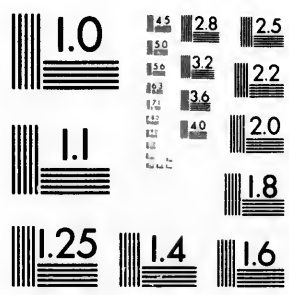
**IMAGE EVALUATION  
TEST TARGET (**



**Photographic  
Sciences  
Corporation**



# IMAGE EVALUATION TEST TARGET (MT-3)



Photographic  
Sciences  
Corporation

23 WEST MAIN STREET  
WEBSTER, N.Y. 14580  
(716) 872-4503

2.5  
5

# CIHM/ICMH Microfiche Series.

C  
C  
m



Canadian Institute for Historical Microreproductions / Institut

© 19

5

MH  
e

**CIHM/ICMH  
Collection de  
microfiches.**



productions / Institut canadien de microreproductions historiques

**1981**

Technical and Bibliographic Notes/Notes techniques

The Institute has attempted to obtain the best original copy available for filming. Features of this copy which may be bibliographically unique, which may alter any of the images in the reproduction, or which may significantly change the usual method of filming, are checked below.

L'Institut a tenté d'obtenir le meilleur exemplaire original disponible pour le filmage. Les caractéristiques de ce document qui peuvent être bibliographiquement uniques, qui peuvent modifier les images dans la reproduction, ou qui peuvent changer de manière significative la méthode habituelle de filmage, sont indiquées ci-dessous.

- Coloured covers/  
Couverture de couleur
- Covers damaged/  
Couverture endommagée
- Covers restored and/or laminated/  
Couverture restaurée et/ou pelliculée
- Cover title missing/  
Le titre de couverture manque
- Coloured maps/  
Cartes géographiques en couleur
- Coloured ink (i.e. other than blue or black)/  
Encre de couleur (i.e. autre que bleue ou noire)
- Coloured plates and/or illustrations/  
Planches et/ou illustrations en couleur
- Bound with other material/  
Relié avec d'autres documents
- Tight binding may cause shadows or distortion  
along interior margin/  
La reliure serrée peut causer de l'ombre ou de la  
distortion le long de la marge intérieure
- Blank leaves added during restoration may  
appear within the text. Whenever possible, these  
have been omitted from filming/  
Il se peut que certaines pages blanches ajoutées  
lors d'une restauration apparaissent dans le texte,  
mais, lorsque cela était possible, ces pages n'ont  
pas été filmées.
- Additional comments:/  
Commentaires supplémentaires:

This item is filmed at the reduction ratio checked below/  
Ce document est filmé au taux de réduction indiqué ci-dessous.

	10X		14X		18X		22X	
					✓			
	12X		16X		20X			

**phic Notes/Notes techniques et bibliographiques**

est  
of this  
,  
ange  
slow.

L'Institut a microfilmé le meilleur exemplaire qu'il lui a été possible de se procurer. Les détails de cet exemplaire qui sont peut-être uniques du point de vue bibliographique, qui peuvent modifier une image reproduite, ou qui peuvent exiger une modification dans la méthode normale de filmage sont indiqués ci-dessous.

Coloured pages/  
Pages de couleur

Pages damaged/  
Pages endommagées

Pages restored and/or laminated/  
Pages restaurées et/ou pelliculées

Pages discoloured, stained or foxed/  
Pages décolorées, tachetées ou piquées

Pages detached/  
Pages détachées

ack)/  
ou noire)

Showthrough/  
Transparence

Quality of print varies/  
Qualité inégale de l'impression

Includes supplementary material/  
Comprend du matériel supplémentaire

istortion

Only edition available/  
Seule édition disponible

e ou de la  
e

Pages wholly or partially obscured by errata slips, tissues, etc., have been refilmed to ensure the best possible image/  
Les pages totalement ou partiellement obscurcies par un feuillet d'errata, une pelure, etc., ont été filmées à nouveau de façon à obtenir la meilleure image possible.

may  
ible, these

s ajoutées  
ns le texte,  
ages n'ont

cked below/  
indiqué ci-dessous.

22X

26X

30X



20X

24X

28X

32X

The copy filmed here has been reproduced thanks to the generosity of:

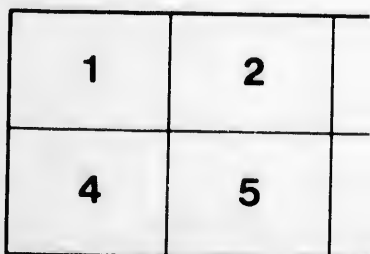
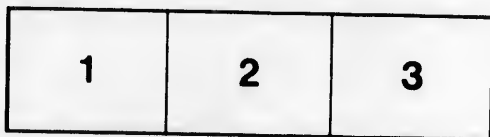
Library Division  
Provincial Archives of British Columbia

The images appearing here are the best quality possible considering the condition and legibility of the original copy and in keeping with the filming contract specifications.

Original copies in printed paper covers are filmed beginning with the front cover and ending on the last page with a printed or illustrated impression, or the back cover when appropriate. All other original copies are filmed beginning on the first page with a printed or illustrated impression, and ending on the last page with a printed or illustrated impression.

The last recorded frame on each microfiche shall contain the symbol  $\rightarrow$  (meaning "CONTINUED"), or the symbol  $\nabla$  (meaning "END"), whichever applies.

Maps, plates, charts, etc., may be filmed at different reduction ratios. Those too large to be entirely included in one exposure are filmed beginning in the upper left hand corner, left to right and top to bottom, as many frames as required. The following diagrams illustrate the method:



L'exemplaire filmé fut reproduit grâce à la  
générosité de:

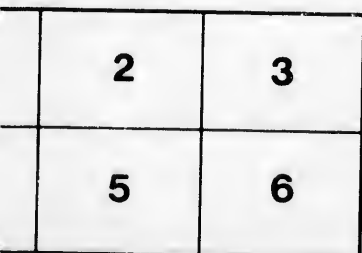
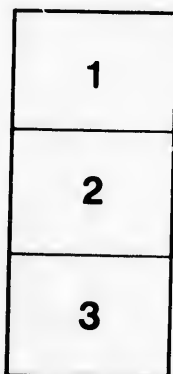
Library Division  
Provincial Archives of British Columbia

Les images suivantes ont été reproduites avec le plus grand soin, compte tenu de la condition et de la netteté de l'exemplaire filmé, et en conformité avec les conditions du contrat de filmage.

Les exemplaires originaux dont la couverture en papier est imprimée sont filmés en commençant par le premier plat et en terminant soit par la dernière page qui comporte une empreinte d'impression ou d'illustration, soit par le second plat, selon le cas. Tous les autres exemplaires originaux sont filmés en commençant par la première page qui comporte une empreinte d'impression ou d'illustration et en terminant par la dernière page qui comporte une telle empreinte.

Un des symboles suivants apparaîtra sur la dernière image de chaque microfiche, selon le cas: le symbole → signifie "A SUIVRE", le symbole ▼ signifie "FIN".

Les cartes, planches, tableaux, etc., peuvent être filmés à des taux de réduction différents. Lorsque le document est trop grand pour être reproduit en un seul cliché, il est filmé à partir de l'angle supérieur gauche, de gauche à droite, et de haut en bas, en prenant le nombre d'images nécessaire. Les diagrammes suivants illustrent la méthode.





# Queen's Birthday Regatta,

UNDER THE PATRONAGE OF

H. E. Lieut.-Governor, Sir James Douglas, K.C.B., and  
the Senior Officer and Officers of H. M. Fleet,  
The Mayor and City Council.

NWP  
97874  
G7860  
1874

JUDGE—Capt. Coomr.      STARTER—  
UMPIRE—Capt. Collins.

## PROGRAMME.

1st RACE—Pair-oared Race, with or without Coxswain.  
Prize..1st Boat, \$30. Entrance, \$2 50.

NAME.	COLORS.	STATION.
"FAIRY,"	White.....	1
"ISIS,"	Royal Blue.....	2
"MONITOR,"	Light Blue.....	3

2nd RACE—Blue Jackets' Race, ships boats. Prize..1st Boat, \$25.

3rd RACE—Four-oared Gig Race, with Coxswain. Prize..1st Boat, \$75. Entrance, \$5.

"AURORA,"	Dark Blue.....	1
"AMATEUR,"	Red.....	2
"STAR,"	Purple and Gold Star....	3
"SPRAY,"	Light Blue.....	4

4th RACE—Four-oared Race, for youths under 19 years of age. Prize..1st Boat, \$30. Entrance, \$2.

"SPRAY,"	Light Blue.....	1
"TYNE,"	Blue.....	2
"AURORA,"	Dark Blue.....	3
"STAR,"	Purple and Gold Star....	4

5th RACE—Single Scullers. Prize..1st Boat, \$30, and the Corporation Challenge Cup.

NAMES OF SCULLERS.	COLORS.	STATION.
F. Saunders.....	Blue and White.....	1
Daniel Stewart.....	Blue.....	2
E. Wall ...	Purple.....	3

6th RACE—Indian Canoes, with 21 paddles. Prize..1st Canoe, \$42.

7th RACE—Four-oared Boats under 24 feet in length. Prize 1st Boat, \$30. Entrance, \$2.

"DART," No. 2.....	Purple.....	1
"DART," No. 1.....	Red.....	2

8th RACE—Double Scullers. Prize..\$30. Entrance, \$2.

"MONITOR,"	Light Blue.....	1
"ISIS,"	Purple.....	2
"FAIRY,"	White, and Blue Star....	3

9th RACE—For Single Sculls, in Pleasure-boats not exceeding 14 feet in length. Prize..1st Boat, \$15; Second, \$7 50; Third, \$3. Entrance, \$1.

Three boats of a class to start for each race.

Entrance money in each race to go to the second boat, except the last race, in which the entrance money will go to the Regatta Fund.

First Race to start at 2 P. M. precisely, and each race to start half an hour after the previous one.

The Course to be from the Gorge round Deadman's Island, passing at first on the West and back on the East side to the Gorge.

By order of the Committee.

G. JAY, Hon. Sec.

## RULES.

---

1. All Boat Races shall be started in the following manner:—The Starter, on being satisfied that the competitors are ready, shall give the signal to start.

2. If the starter considers the start false, he shall at once recall the boats to their stations, and any boat refusing to start again shall be disqualified.

3. Any boat not at its post at the time specified shall be liable to be disqualified by the Umpire.

4. The Umpire may act as starter if he thinks fit. When he does not so act, the Starter shall be subject to the control of the Umpire.

5. No fouling whatever shall be allowed. The boat committing the foul shall be disqualified.

6. Each boat shall keep its own water throughout the race, and any boat departing from its own water will do so at its peril.

7. A boat's own water is its straight course parallel with those of the other competing boats from the station assigned to it at starting to the finish, and the Umpire shall be sole judge of a boat's own water and proper course during the race.

8. The Umpire, when appealed to, shall decide all questions as to foul.

9. A claim of foul must be made to the Judge or to the Umpire by the competitor himself, before getting out of his boat.

10. It shall be considered a foul, when after the race has commenced, any competitor, by his oar, boat and person, comes in contact with the oar, boat or person of another competitor, unless in the opinion of the Umpire such contact is so slight as not to influence the race.

11. In case of a foul, the Umpire shall have the power:—

(a). To place the boats, except the boat committing the foul, (which is disqualified) in the order in which they come in.

(b). To order the boats engaged in the race, other than the boat committing the foul, to row over again on the same or another day.

(c). To start the qualified boats from the place where the foul was committed.

12. The Umpire may, during a race, caution any competitor in danger of committing a foul.

13. Every boat shall abide by its accidents.

14. No boat shall be allowed to accompany a competitor for the purpose of directing his course or affording him other assistance. The boat receiving any such direction or assistance shall be disqualified at the discretion of the Umpire.

15. The jurisdiction of the Umpire shall extend over the race and all matters connected with it from the time the race is specified to start until its final termination, and his decision shall in all cases be final and without appeal.

16. Any competitor refusing to abide by the decision or to follow the direction of the Umpire, shall be disqualified.

17. The Umpire, if he thinks proper, may reserve his decision, provided such decision be given on the day of the races.

