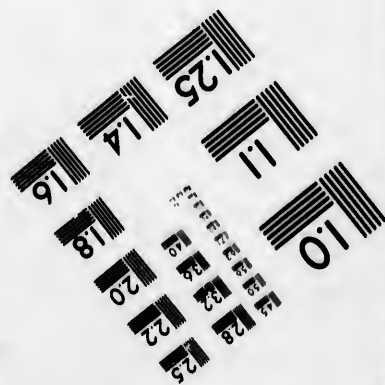
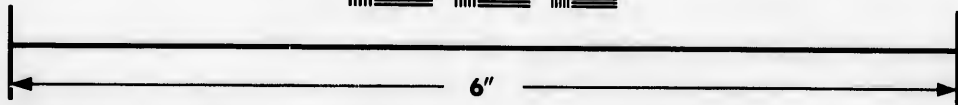
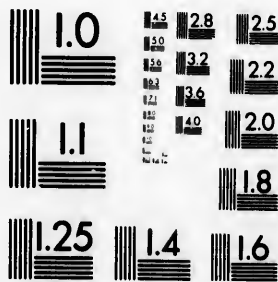


**IMAGE EVALUATION
TEST TARGET (MT-3)**



**Photographic
Sciences
Corporation**

23 WEST MAIN STREET
WEBSTER, N. Y. 14580
(716) 872-4303

1.5 2.8
1.9 3.2 2.5
2.6 2.2
2.0
8

**CIHM/ICMH
Microfiche
Series.**

**CIHM/ICMH
Collection de
microfiches.**



Canadian Institute for Historical Microreproductions / Institut canadien de microreproductions historiques

10

© 1981

Technical and Bibliographic Notes/Notes techniques et bibliographiques

The Institute has attempted to obtain the best original copy available for filming. Features of this copy which may be bibliographically unique, which may alter any of the images in the reproduction, or which may significantly change the usual method of filming, are checked below.

L'Institut a microfilmé le meilleur exemplaire qu'il lui a été possible de se procurer. Les détails de cet exemplaire qui sont peut-être uniques du point de vue bibliographique, qui peuvent modifier une image reproduite, ou qui peuvent exiger une modification dans la méthode normale de filmage sont indiqués ci-dessous.

- Coloured covers/
Couverture de couleur
- Covers damaged/
Couverture endommagée
- Covers restored and/or laminated/
Couverture restaurée et/ou pelliculée
- Cover title missing/
Le titre de couverture manque
- Coloured maps/
Cartes géographiques en couleur
- Coloured ink (i.e. other than blue or black)/
Encre de couleur (i.e. autre que bleue ou noire)
- Coloured plates and/or illustrations/
Planches et/ou illustrations en couleur
- Bound with other material/
Relié avec d'autres documents
- Tight binding may cause shadows or distortion along interior margin/
La reliure serrée peut causer de l'ombre ou de la distortion le long de la marge intérieure
- Blank leaves added during restoration may appear within the text. Whenever possible, these have been omitted from filming/
Il se peut que certaines pages blanches ajoutées lors d'une restauration apparaissent dans le texte, mais, lorsque cela était possible, ces pages n'ont pas été filmées.
- Additional comments:/
Commentaires supplémentaires:

- Coloured pages/
Pages de couleur
- Pages damaged/
Pages endommagées
- Pages restored and/or laminated/
Pages restaurées et/ou pelliculées
- Pages discoloured, stained or foxed/
Pages décolorées, tachetées ou piquées
- Pages detached/
Pages détachées
- Showthrough/
Transparence
- Quality of print varies/
Qualité inégale de l'impression
- Includes supplementary material/
Comprend du matériel supplémentaire
- Only edition available/
Seule édition disponible
- Pages wholly or partially obscured by errata slips, tissues, etc., have been refilmed to ensure the best possible image/
Les pages totalement ou partiellement obscurcies par un feuillet d'errata, une pelure, etc., ont été filmées à nouveau de façon à obtenir la meilleure image possible.

This item is filmed at the reduction ratio checked below/
Ce document est filmé au taux de réduction indiqué ci-dessous.

10X	14X	18X	22X	26X	30X
<input type="checkbox"/>	<input type="checkbox"/>	<input type="checkbox"/>	<input checked="" type="checkbox"/>	<input type="checkbox"/>	<input type="checkbox"/>
12X	16X	20X	24X	28X	32X

The copy filmed here has been reproduced thanks to the generosity of:

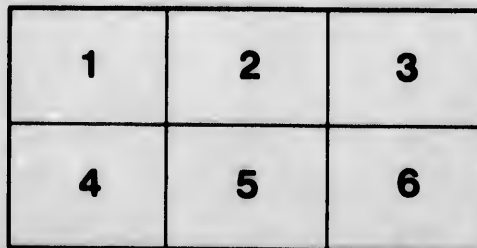
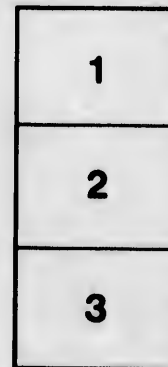
Library Division
Provincial Archives of British Columbia

The images appearing here are the best quality possible considering the condition and legibility of the original copy and in keeping with the filming contract specifications.

Original copies in printed paper covers are filmed beginning with the front cover and ending on the last page with a printed or illustrated impression, or the back cover when appropriate. All other original copies are filmed beginning on the first page with a printed or illustrated impression, and ending on the last page with a printed or illustrated impression.

The last recorded frame on each microfiche shall contain the symbol \rightarrow (meaning "CONTINUED"), or the symbol ∇ (meaning "END"), whichever applies.

Maps, plates, charts, etc., may be filmed at different reduction ratios. Those too large to be entirely included in one exposure are filmed beginning in the upper left hand corner, left to right and top to bottom, as many frames as required. The following diagrams illustrate the method:



L'exemplaire filmé fut reproduit grâce à la générosité de:

Library Division
Provincial Archives of British Columbia

Les images suivantes ont été reproduites avec le plus grand soin, compte tenu de la condition et de la netteté de l'exemplaire filmé, et en conformité avec les conditions du contrat de filmage.

Les exemplaires originaux dont la couverture en papier est imprimée sont filmés en commençant par le premier plat et en terminant soit par la dernière page qui comporte une empreinte d'impression ou d'illustration, soit par le second plat, selon le cas. Tous les autres exemplaires originaux sont filmés en commençant par la première page qui comporte une empreinte d'impression ou d'illustration et en terminant par la dernière page qui comporte une telle empreinte.

Un des symboles suivants apparaîtra sur la dernière image de chaque microfiche, selon le cas: le symbole \rightarrow signifie "A SUIVRE", le symbole ∇ signifie "FIN".

Les cartes, planches, tableaux, etc., peuvent être filmés à des taux de réduction différents. Lorsque le document est trop grand pour être reproduit en un seul cliché, il est filmé à partir de l'angle supérieur gauche, de gauche à droite, et de haut en bas, en prenant le nombre d'images nécessaire. Les diagrammes suivants illustrent la méthode.

Nwp
283.1
C562ne

New Year's Greeting

—1888—

Reformed Episcopal Church,

VICTORIA, P. C.

FINANCIAL STATEMENT

—TO—

DECEMBER 31ST, 1887.

PROVINCIAL ARCHIVES OF B. C.

To the Members of the "Church of Our Lord," Victoria, British Columbia.

BELOVED BRETHREN :

We desire, at this season, to offer our most sincere and hearty congratulations to you all individually ; praying that Our Heavenly Father may be graciously pleased to vouchsafe to each one his richest blessing, from the fullness of His love, for our Lord Jesus Christ's sake.

From our own experience of sickness we can earnestly sympathise with all the suffering and afflicted members of our congregation, and are truly grateful for every opportunity afforded us during the past year of ministering the consolations of God publicly, and from house to house, 'speaking all the words of this life,' and commending you to 'the Father of mercies, and the God of all comfort;' and we do fervently plead for a larger measure of divine grace to enable us yet more effectually to discharge the various duties of our pastoral office, that 'when the Chief Shepherd shall appear, ye may receive a crown of glory, that fadeth not away.'

We cannot help marking with heart-felt gratitude to the Supreme Giver of all good, the grace of continued and ever-increasing liberality in sustaining the different funds of the congregation, as is evidenced in the financial statement now presented by our faithful church-wardens. This unflinching cheerfulness in giving for the support of the gospel is the more note-worthy in our young province, from the fact that, since the beginning (in 1874,) of our testimony for Reformation principles, the congregation has been self-sustaining—not having received extraneous aid in any form. "Thanks be to God for His unspeakable gift."

Your affectionate pastors,

E. CRIDGE.

J. REID.

Victoria, B. C., December 31st, 1887.

*The Church Wardens in Account with the Reformed Episcopal Church, Victoria, B. C.
Summary of Receipts and Expenditure from June, 1886, to Dec. 31st, 1887.*

RECEIPTS.	EXPENDITURE.
To Balance from 1886.....\$ 46 03	By Stipends of Clergy to date.....\$4,266 63
Pew Rents..... 1,786 35	Salary of Organist "..... 300 00
Offerories..... 2,880 33	" Choir Master to date..... 250 00
Pastoral sustentation fund..... 892 25	" Janitor to date..... 311 50
Proceeds of Entertainments, &c..... 38 25	" Organ boy to date..... 80 00
" of Garden Party, Lady Douglas..... 83 55	Insurance..... 128 12
" of Bazaar..... 820 00	Interest on funded debt..... 369 28
Special donations..... 51 77	Redemption of Scrip..... 22 70
Burial fees..... 28 50	Coals and Wood..... 74 25
	Gas, and Spirit for Meter..... 120 35
	Repairs to Church and Organ..... 116 82
	Printing and Stationery..... 23 92
	Commission on collecting..... 132 06
	Washing..... 20 00
	Sundries..... 25 50
	Charities Vancouver Relief..... 133 65
	" Indigent Home Fund..... 30 40
	" To the poor per Clergy..... 128 05
	" Jubilee Hospital..... 65 00
	Balance on hand Dec. 31st, 1887..... 28 77
\$6,627 00	\$6,627 00

Certified correct,

W. H. MASON, Auditor.

CHAS. HAYWARD, }
H. D. HELMCKEN, } Church Wardens.

