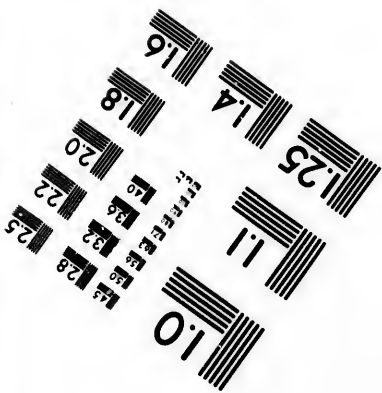
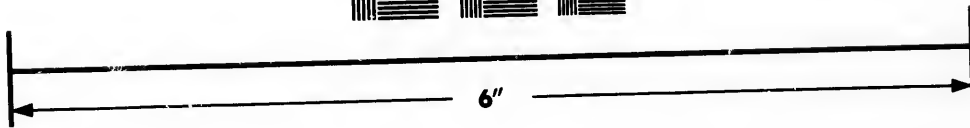
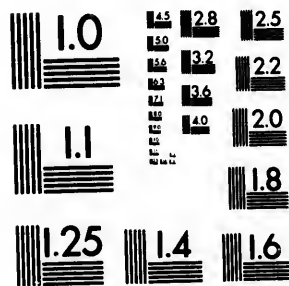


**IMAGE EVALUATION
TEST TARGET (MT-3)**



**Photographic
Sciences
Corporation**

23 WEST MAIN STREET
WEBSTER, N. Y. 14530
(716) 872-4503

**CIHM/ICMH
Microfiche
Series.**

**CIHM/ICMH
Collection de
microfiches.**



Canadian Institute for Historical Microreproductions / Institut canadien de microreproductions historiques

© 1984

Technical and Bibliographic Notes/Notes techniques et bibliographiques

The Institute has attempted to obtain the best original copy available for filming. Features of this copy which may be bibliographically unique, which may alter any of the images in the reproduction, or which may significantly change the usual method of filming, are checked below.

L'Institut a microfilmé le meilleur exemplaire qu'il lui a été possible de se procurer. Les détails de cet exemplaire qui sont peut-être uniques du point de vue bibliographique, qui peuvent modifier une image reproduite, ou qui peuvent exiger une modification dans la méthode normale de filmage sont indiqués ci-dessous.

- | | |
|--|--|
| <input type="checkbox"/> Coloured covers/
Couverture de couleur | <input type="checkbox"/> Coloured pages/
Pages de couleur |
| <input type="checkbox"/> Covers damaged/
Couverture endommagée | <input type="checkbox"/> Pages damaged/
Pages endommagées |
| <input type="checkbox"/> Covers restored and/or laminated/
Couverture restaurée et/ou pelliculée | <input type="checkbox"/> Pages restored and/or laminated/
Pages restaurées et/ou pelliculées |
| <input checked="" type="checkbox"/> Cover title missing/
Le titre de couverture manque | <input type="checkbox"/> Pages discoloured, stained or foxed/
Pages décolorées, tachetées ou piquées |
| <input type="checkbox"/> Coloured maps/
Cartes géographiques en couleur | <input type="checkbox"/> Pages detached/
Pages détachées |
| <input type="checkbox"/> Coloured ink (i.e. other than blue or black)/
Encre de couleur (i.e. autre que bleue ou noire) | <input type="checkbox"/> Showthrough/
Transparence |
| <input type="checkbox"/> Coloured plates and/or illustrations/
Planches et/ou illustrations en couleur | <input type="checkbox"/> Quality of print varies/
Qualité inégale de l'impression |
| <input type="checkbox"/> Bound with other material/
Relié avec d'autres documents | <input type="checkbox"/> Includes supplementary material/
Comprend du matériel supplémentaire |
| <input type="checkbox"/> Tight binding may cause shadows or distortion
along interior margin/
La reliure serrée peut causer de l'ombre ou de la
distortion le long de la marge intérieure | <input type="checkbox"/> Only edition available/
Seule édition disponible |
| <input type="checkbox"/> Blank leaves added during restoration may
appear within the text. Whenever possible, these
have been omitted from filming/
Il se peut que certaines pages blanches ajoutées
lors d'une restauration apparaissent dans le texte,
mais, lorsque cela était possible, ces pages n'ont
pas été filmées. | <input type="checkbox"/> Pages wholly or partially obscured by errata
slips, tissues, etc., have been refilmed to
ensure the best possible image/
Les pages totalement ou partiellement
obscurcies par un feuillet d'errata, une pelure,
etc., ont été filmées à nouveau de façon à
obtenir la meilleure image possible. |
| <input type="checkbox"/> Additional comments:/
Commentaires supplémentaires: | |

This item is filmed at the reduction ratio checked below/
Ce document est filmé au taux de réduction indiqué ci-dessous.

10X	14X	18X	22X	26X	30X
<input type="checkbox"/>	<input type="checkbox"/>	<input type="checkbox"/>	<input checked="" type="checkbox"/>	<input type="checkbox"/>	<input type="checkbox"/>
12X	16X	20X	24X	28X	32X

The copy filmed here has been reproduced thanks to the generosity of:

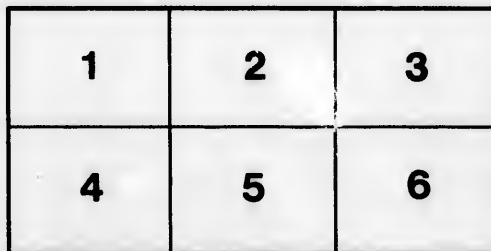
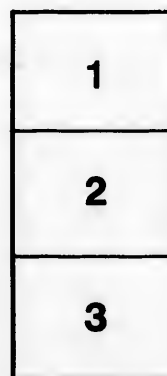
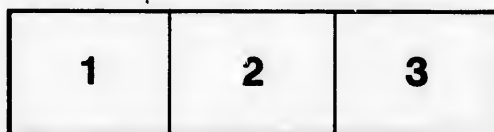
Library of Congress
Photoduplication Service

The images appearing here are the best quality possible considering the condition and legibility of the original copy and in keeping with the filming contract specifications.

Original copies in printed paper covers are filmed beginning with the front cover and ending on the last page with a printed or illustrated impression, or the back cover when appropriate. All other original copies are filmed beginning on the first page with a printed or illustrated impression, and ending on the last page with a printed or illustrated impression.

The last recorded frame on each microfiche shall contain the symbol \rightarrow (meaning "CONTINUED"), or the symbol ∇ (meaning "END"), whichever applies.

Maps, plates, charts, etc., may be filmed at different reduction ratios. Those too large to be entirely included in one exposure are filmed beginning in the upper left hand corner, left to right and top to bottom, as many frames as required. The following diagrams illustrate the method:



L'exemplaire filmé fut reproduit grâce à la générosité de:

Library of Congress
Photoduplication Service

Les images suivantes ont été reproduites avec le plus grand soin, compte tenu de la condition et de la netteté de l'exemplaire filmé, et en conformité avec les conditions du contrat de filmage.

Les exemplaires originaux dont la couverture en papier est imprimée sont filmés en commençant par le premier plat et en terminant soit par la dernière page qui comporte une empreinte d'impression ou d'illustration, soit par le second plat, selon le cas. Tous les autres exemplaires originaux sont filmés en commençant par la première page qui comporte une empreinte d'impression ou d'illustration et en terminant par la dernière page qui comporte une telle empreinte.

Un des symboles suivants apparaîtra sur la dernière image de chaque microfiche, selon le cas: le symbole \rightarrow signifie "A SUIVRE", le symbole ∇ signifie "FIN".

Les cartes, planches, tableaux, etc., peuvent être filmés à des taux de réduction différents. Lorsque le document est trop grand pour être reproduit en un seul cliché, il est filmé à partir de l'angle supérieur gauche, de gauche à droite, et de haut en bas, en prenant le nombre d'images nécessaire. Les diagrammes suivants illustrent la méthode.

ails
du
odifier
une
image

rrata
to

pelure,
n à

32X

189
200

1898
2044651



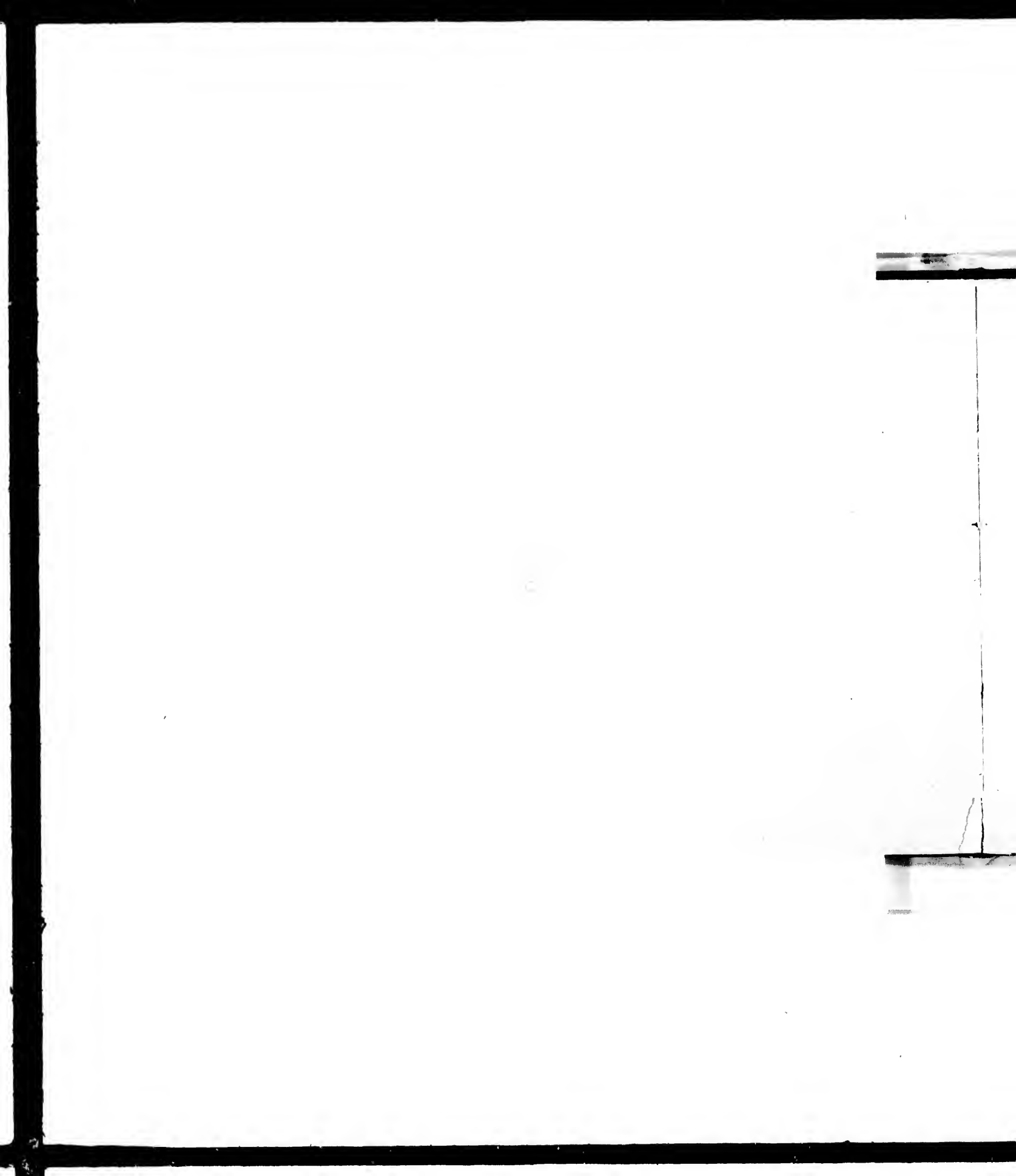
1898

14

14460

COPYRIGHT 1938 BY S. R. STODOLAN, GLEN FALLS, N. Y.



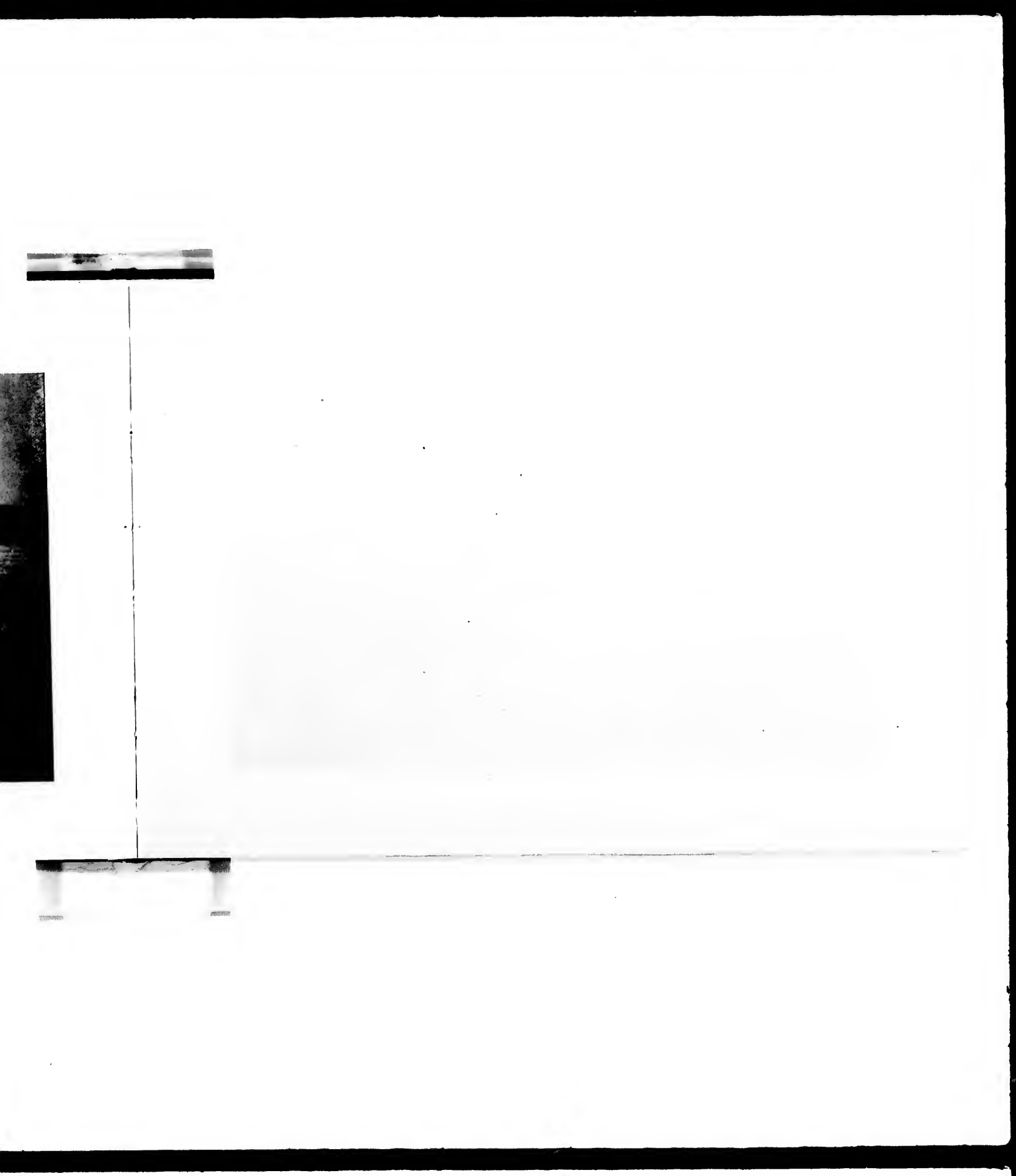


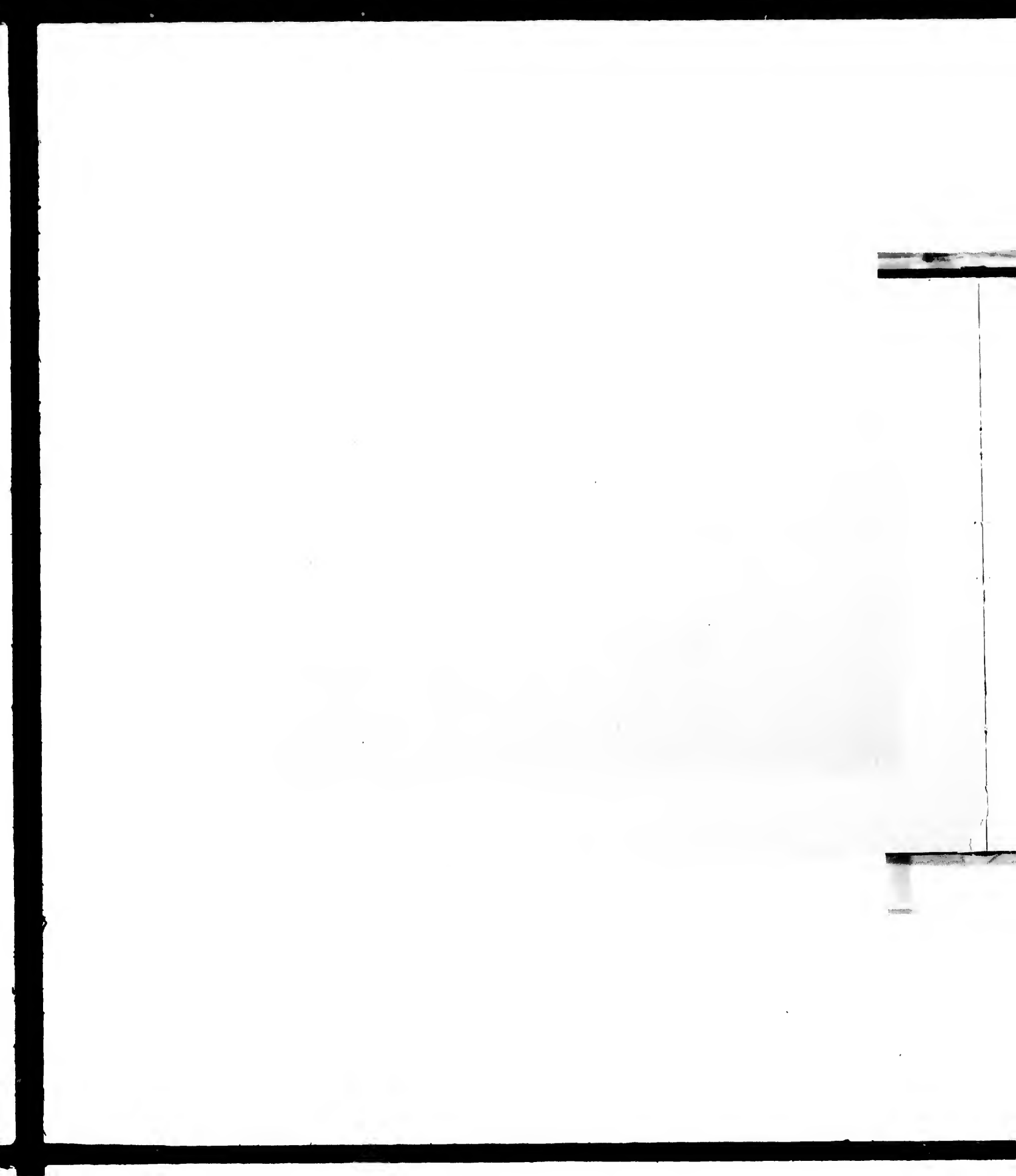


STEAMER VERMONT—FROM TICONDEROGA TO PLATTSBURGH.



LAKE CHAMPLAIN, SOUTH FROM FORT TICONDEROGA.







FORT TICONDEROGA.

Commenced by the French in 1755. Captured by the English in 1758. Captured by Ethan Allen in 1775, being the first English stronghold to surrender in the Revolution.

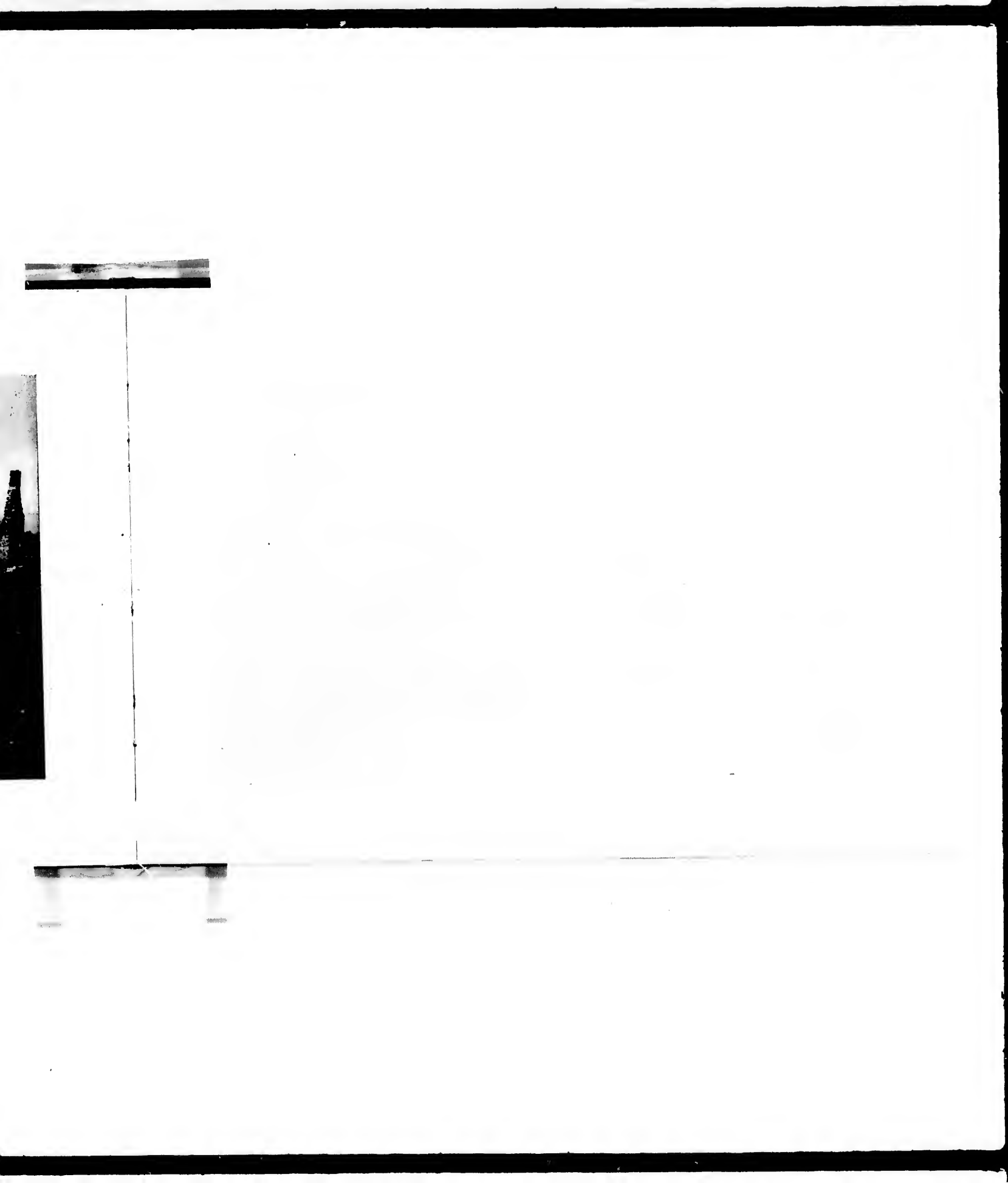
MOUNT DEFIANCE

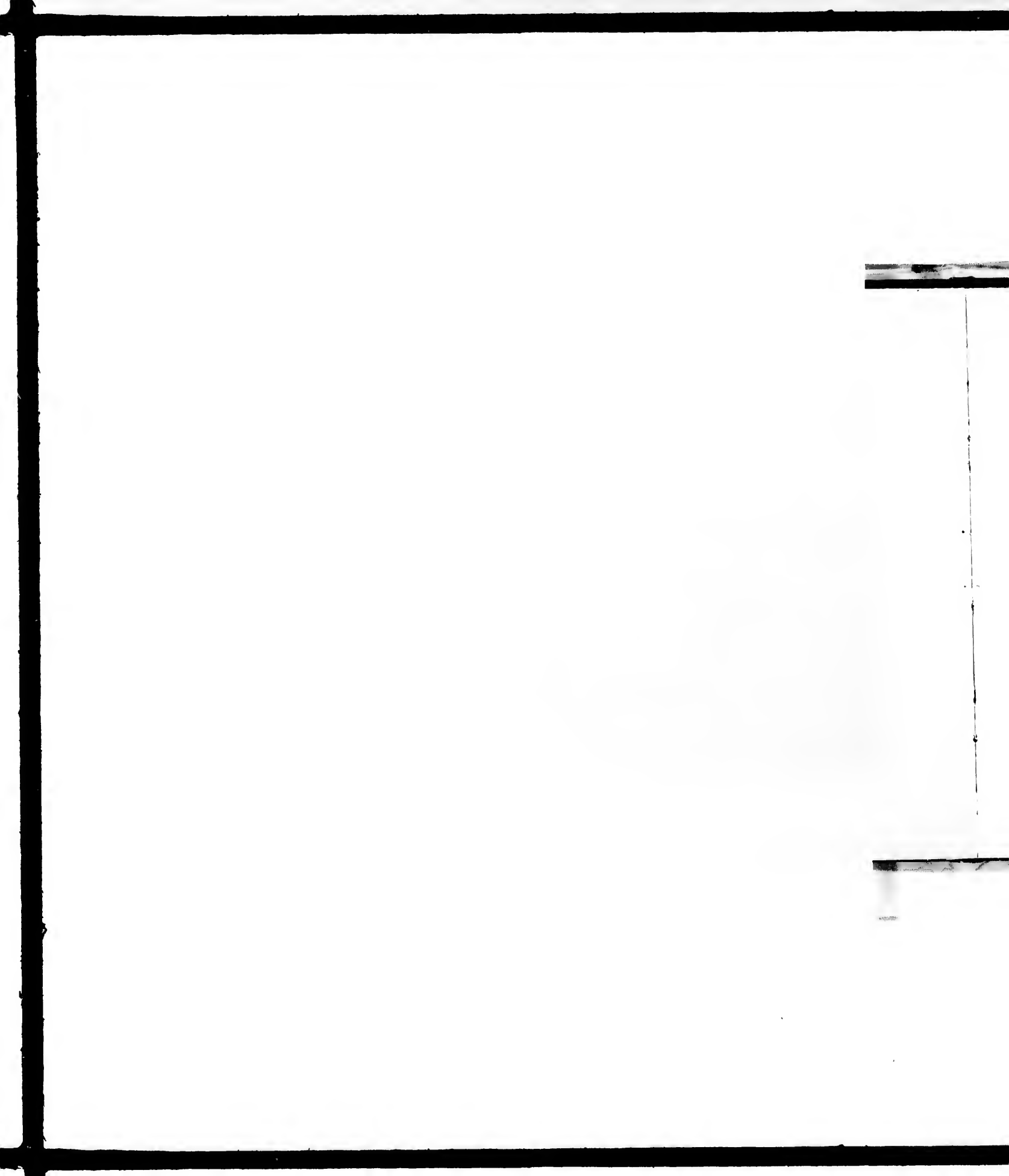


PARADE GROUND

OFFICER'S QUARTERS

RUINS OF FORT TICONDEROGA
(In the Foreground is Chimney to Underground Room.)







UNDERGROUND ROOM AT FORT TICONDEROGA

(Magazine or Bakery—which?)

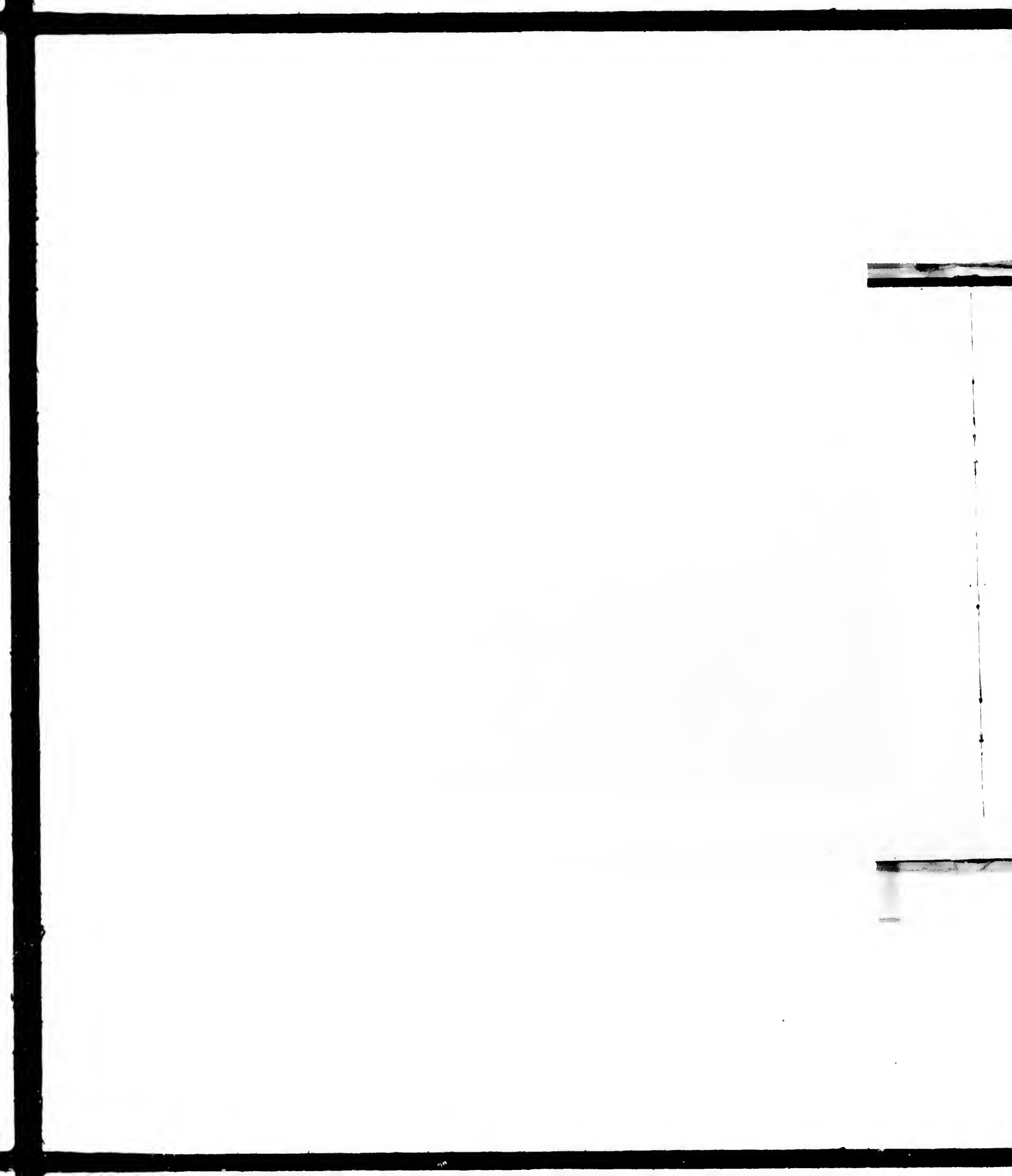


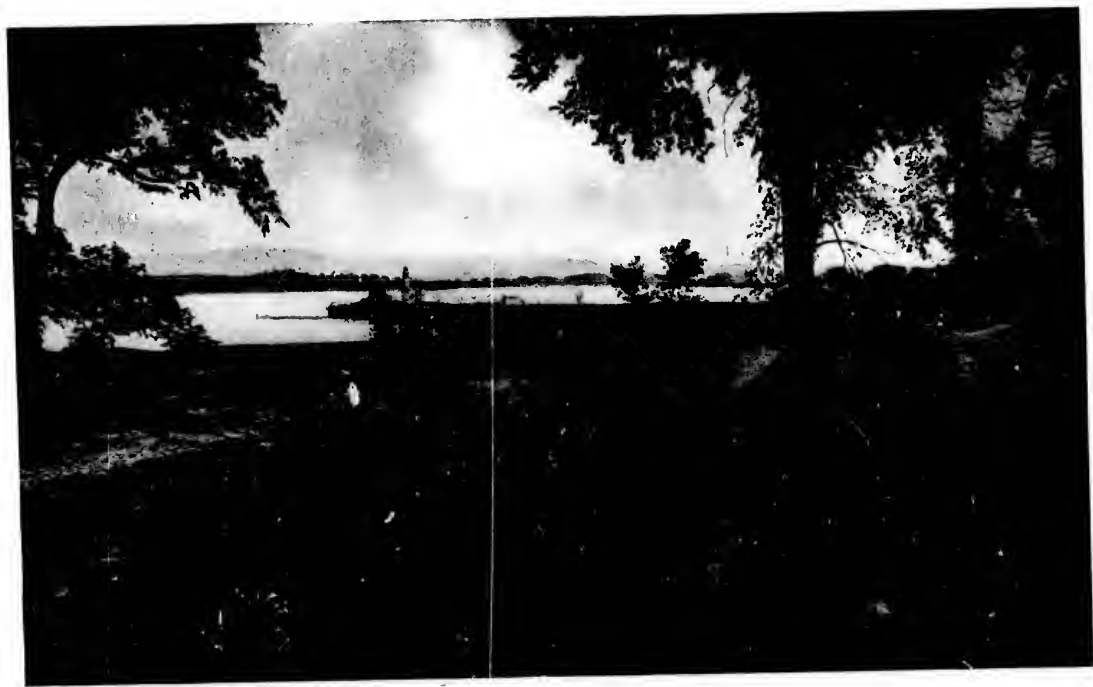
CROWN POINT LIGHT

APPROACHING PORT HENRY
(On the left is Ft. Frederick Landing.)

CHIMNEY POINT







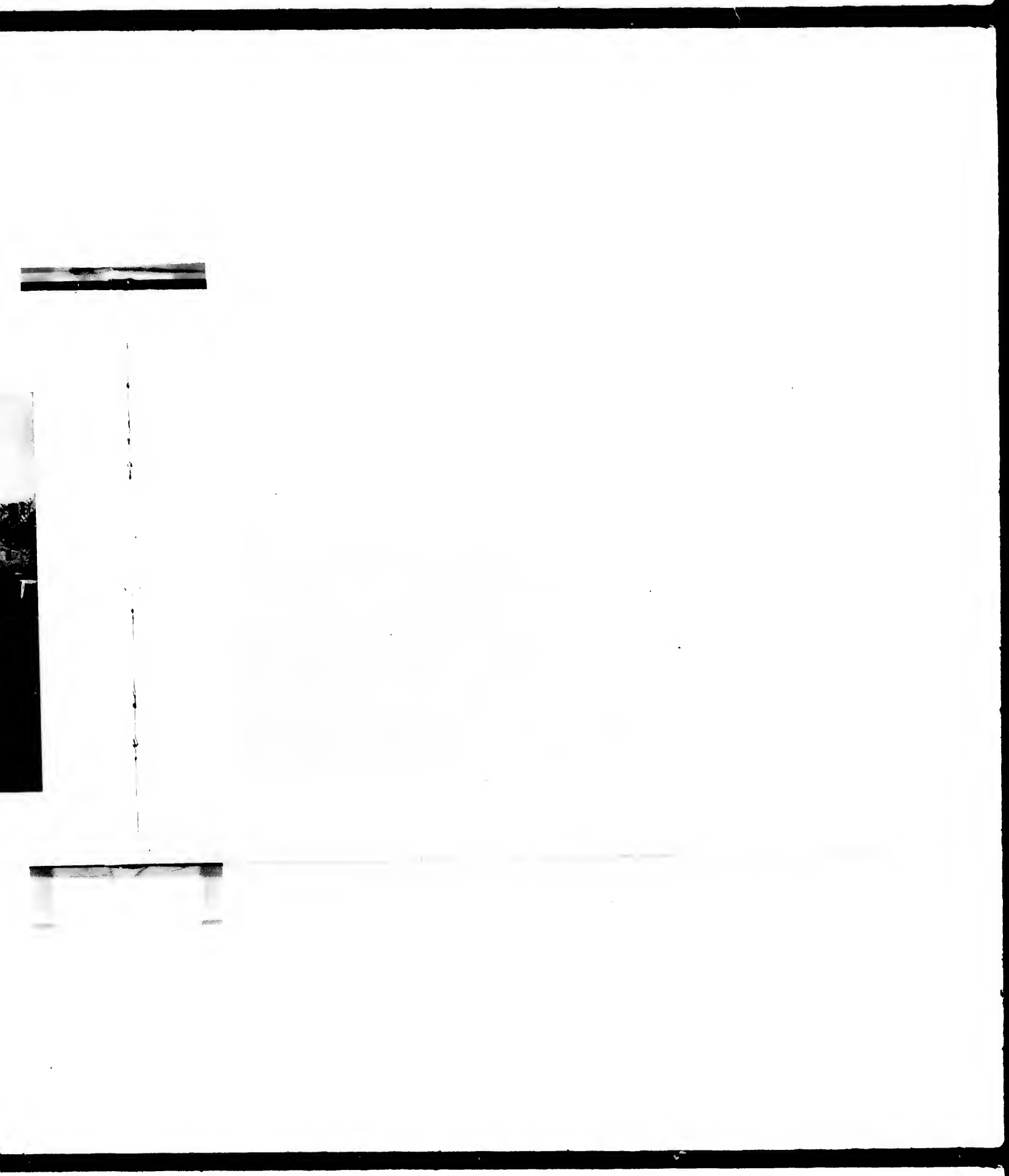
CROWN POINT RUINS

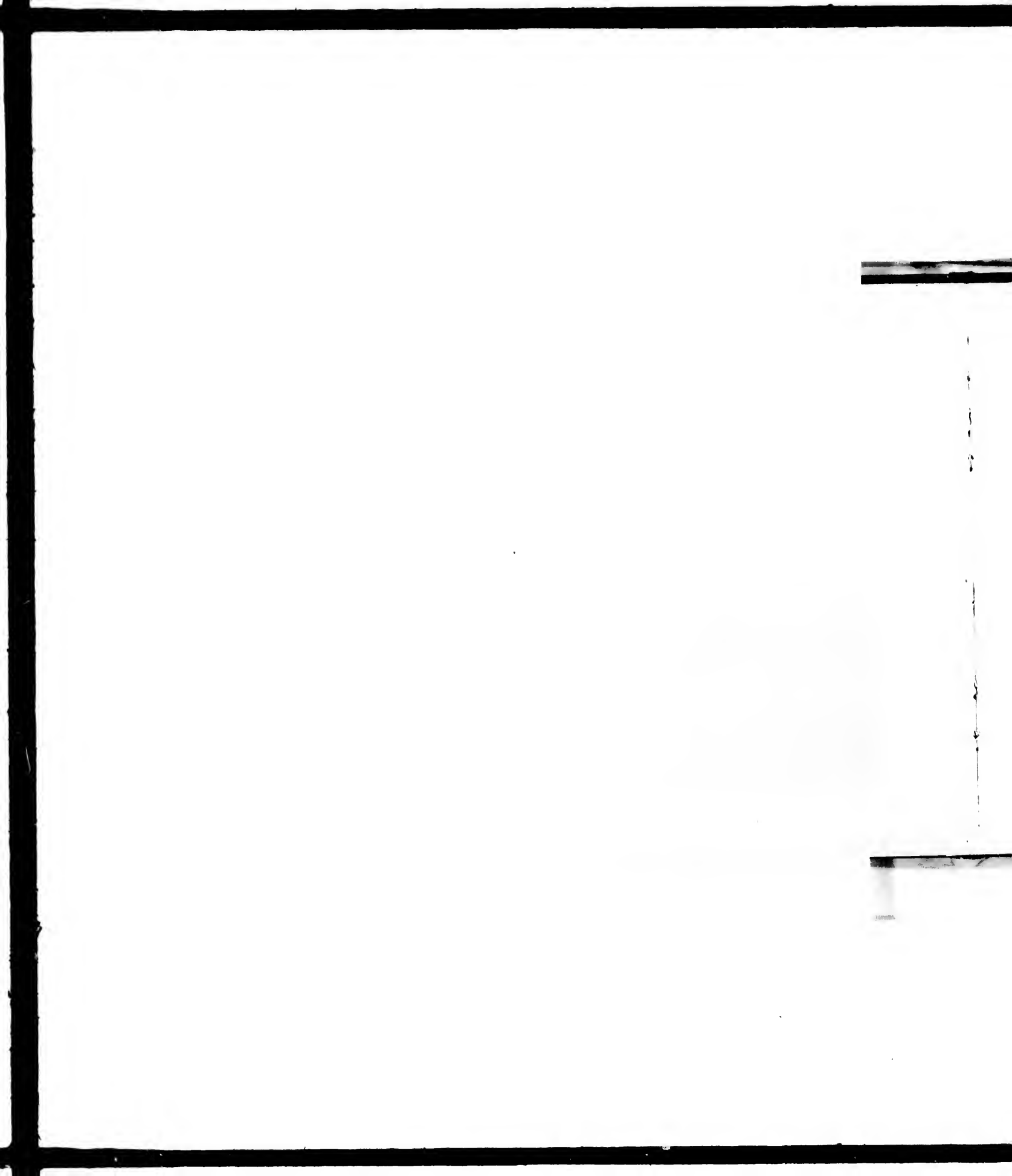
(Fort Frederick Landing, and Crown Point Light House in the centre. At the extreme left is a bit of the original Fort St. Frederick, built by the French in 1731.)



RUINS OF CROWN POINT

(Commenced by Gen. Amherst in 1759. Cost upwards of Ten Millions of Dollars.)







BULWAGGA BAY, FROM PORT HENRY

(At the extreme left is supposed to have occurred Champlain's battle with the Iroquois in 1609.)



WESTPORT INN

WESTPORT LANDING



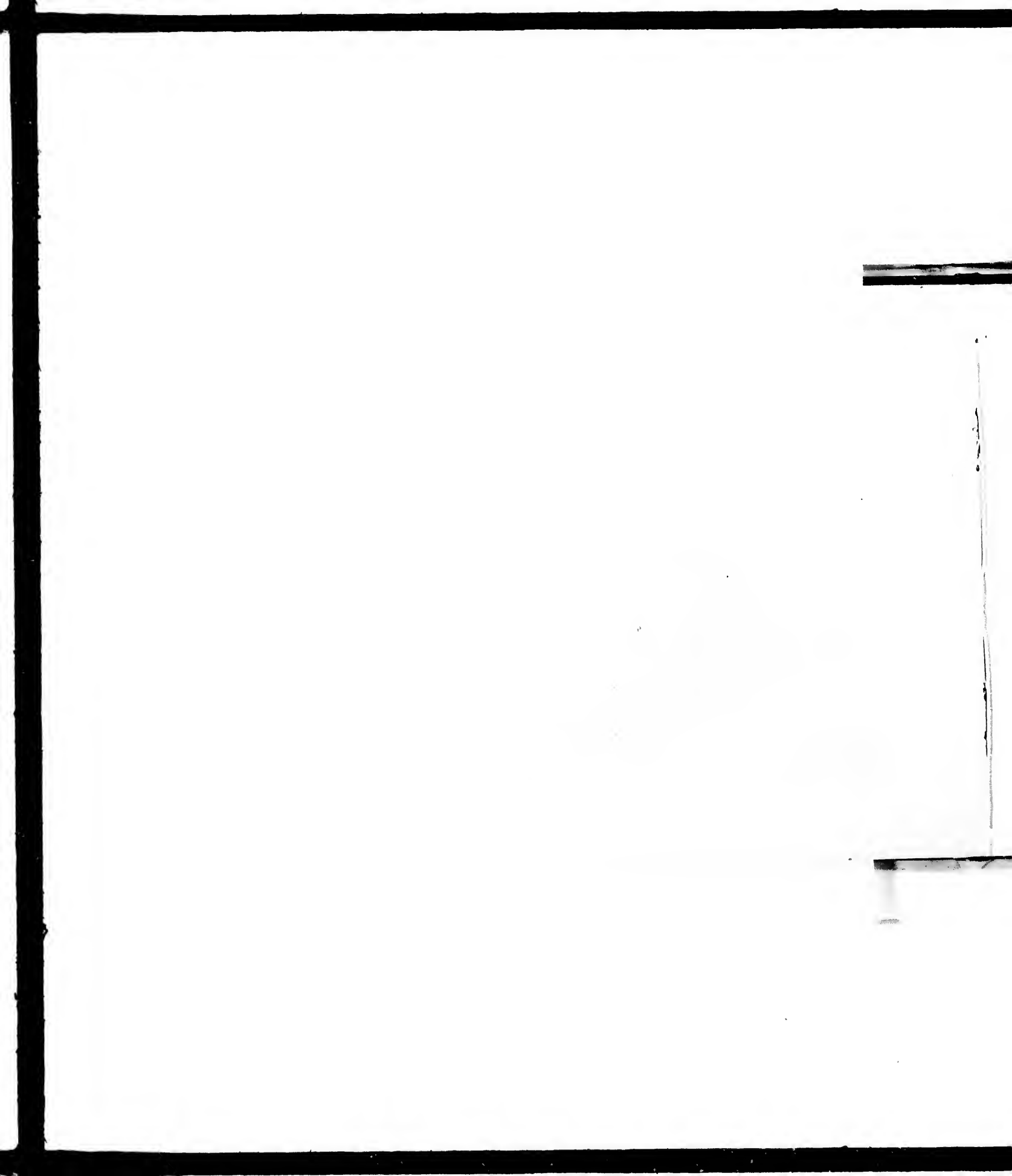


BARN ROCK



THE PALISADES





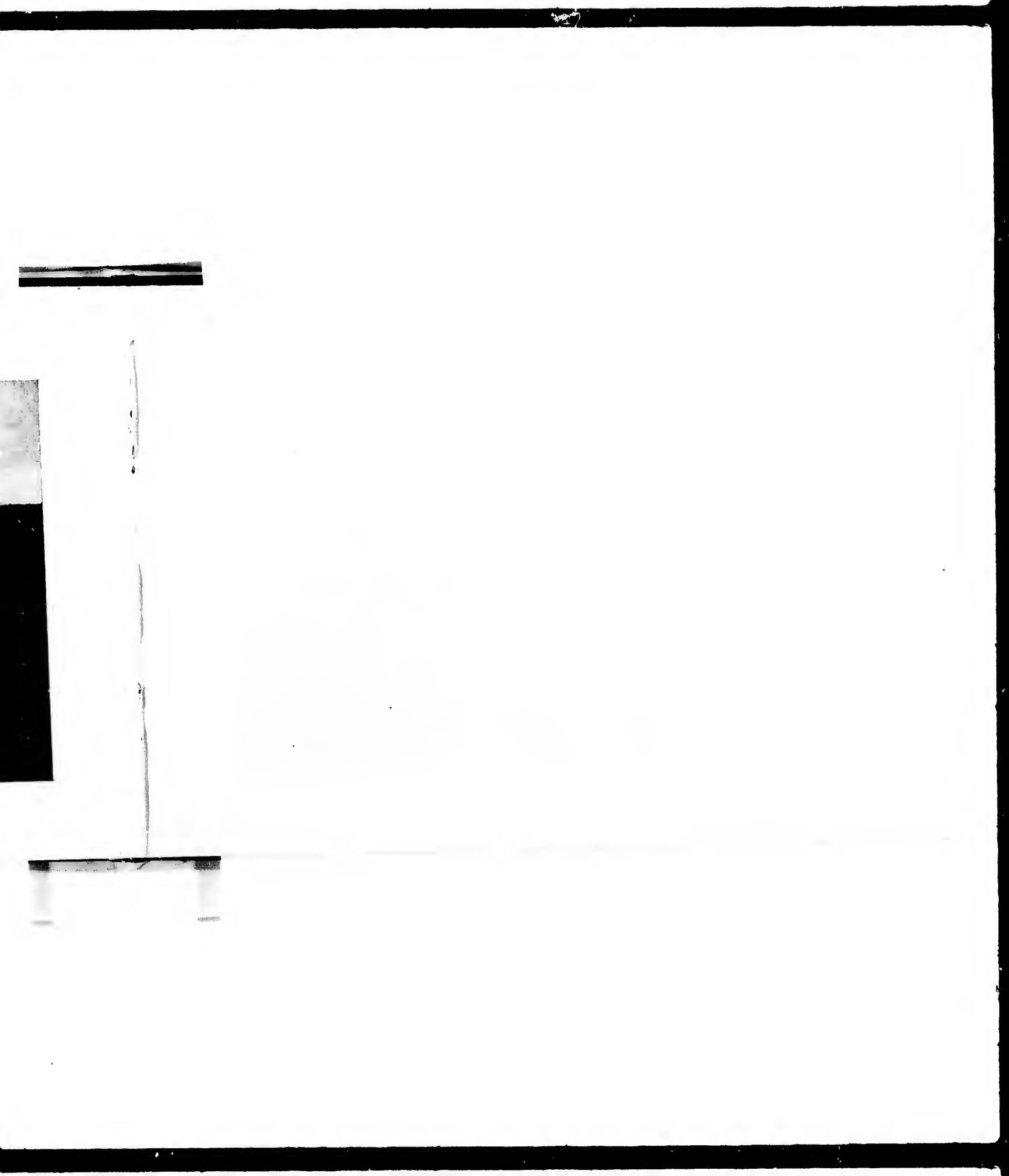


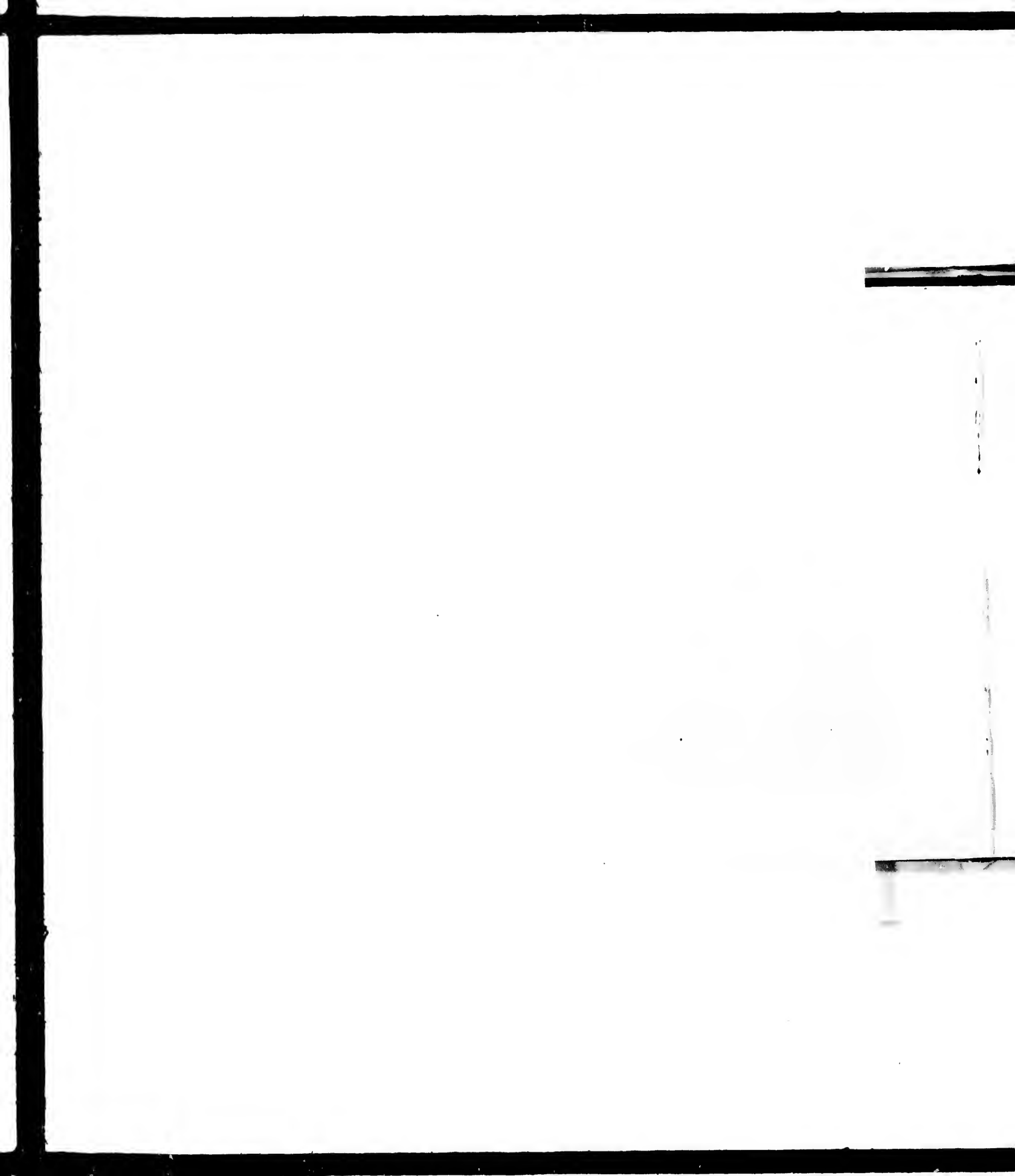
SPLIT ROCK MOUNTAIN



SPLIT ROCK LIGHT

SPLIT ROCK







THE RED ROCKS OF WILLSBOROUGH BAY
(D. & H. train approaching Red Rock Tunnel.)

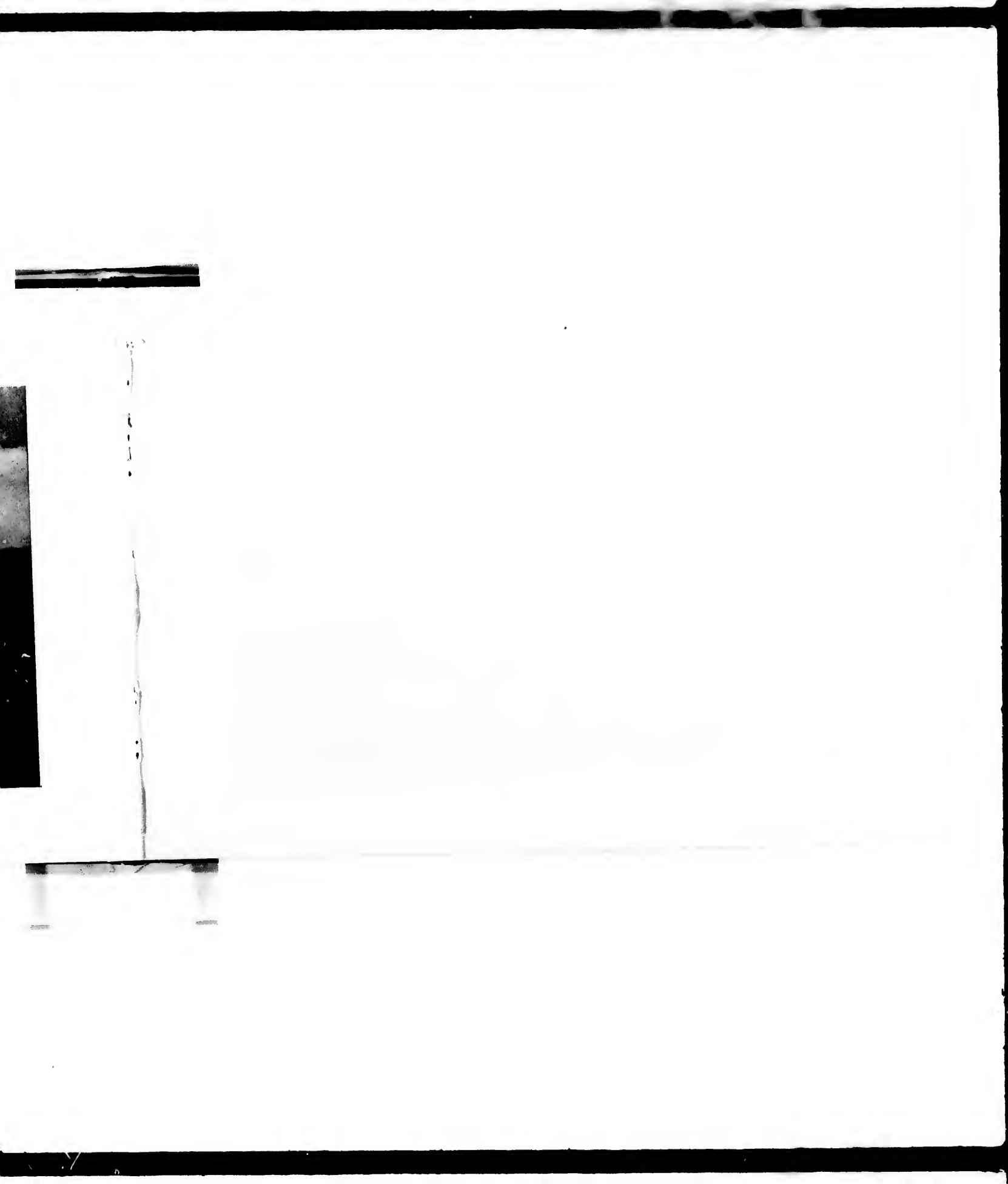


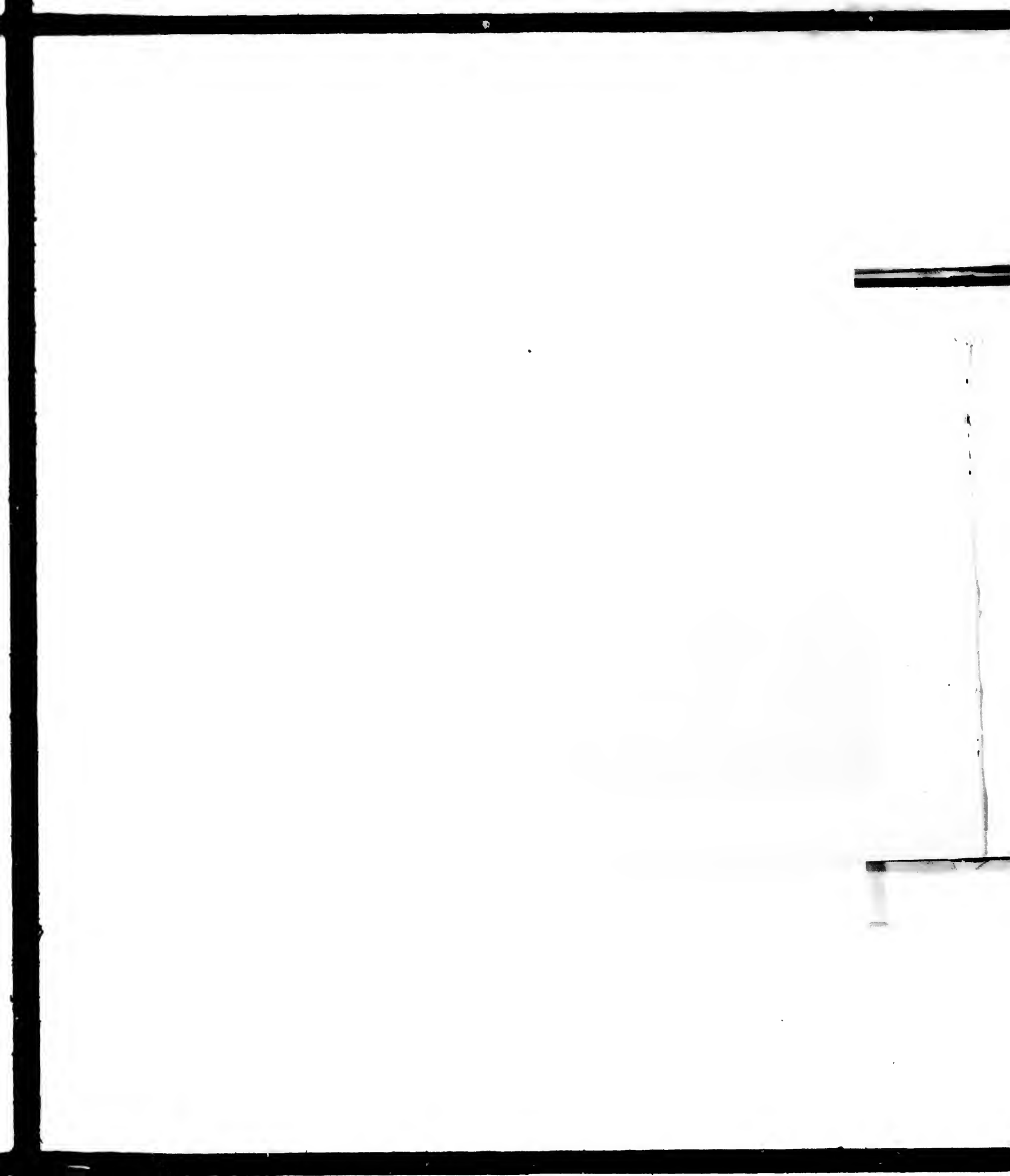
ADIRONDACKS

ROCK DUUNDER

JUNIPER ISLAND

WEST FROM NEAR BURLINGTON





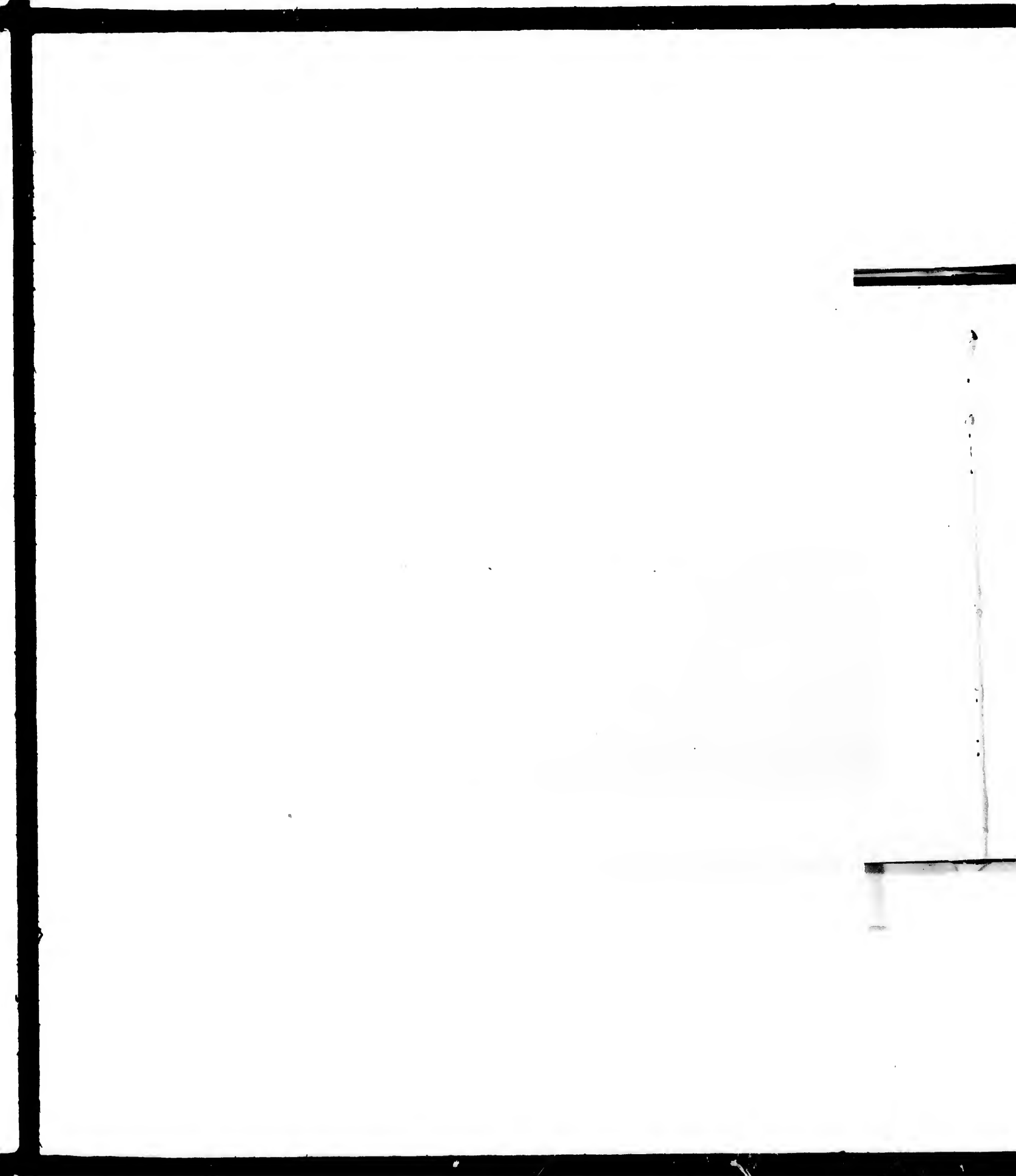


BURLINGTON, VERMONT
(From Southern entrance to harbor.)



PORT KENT LANDING





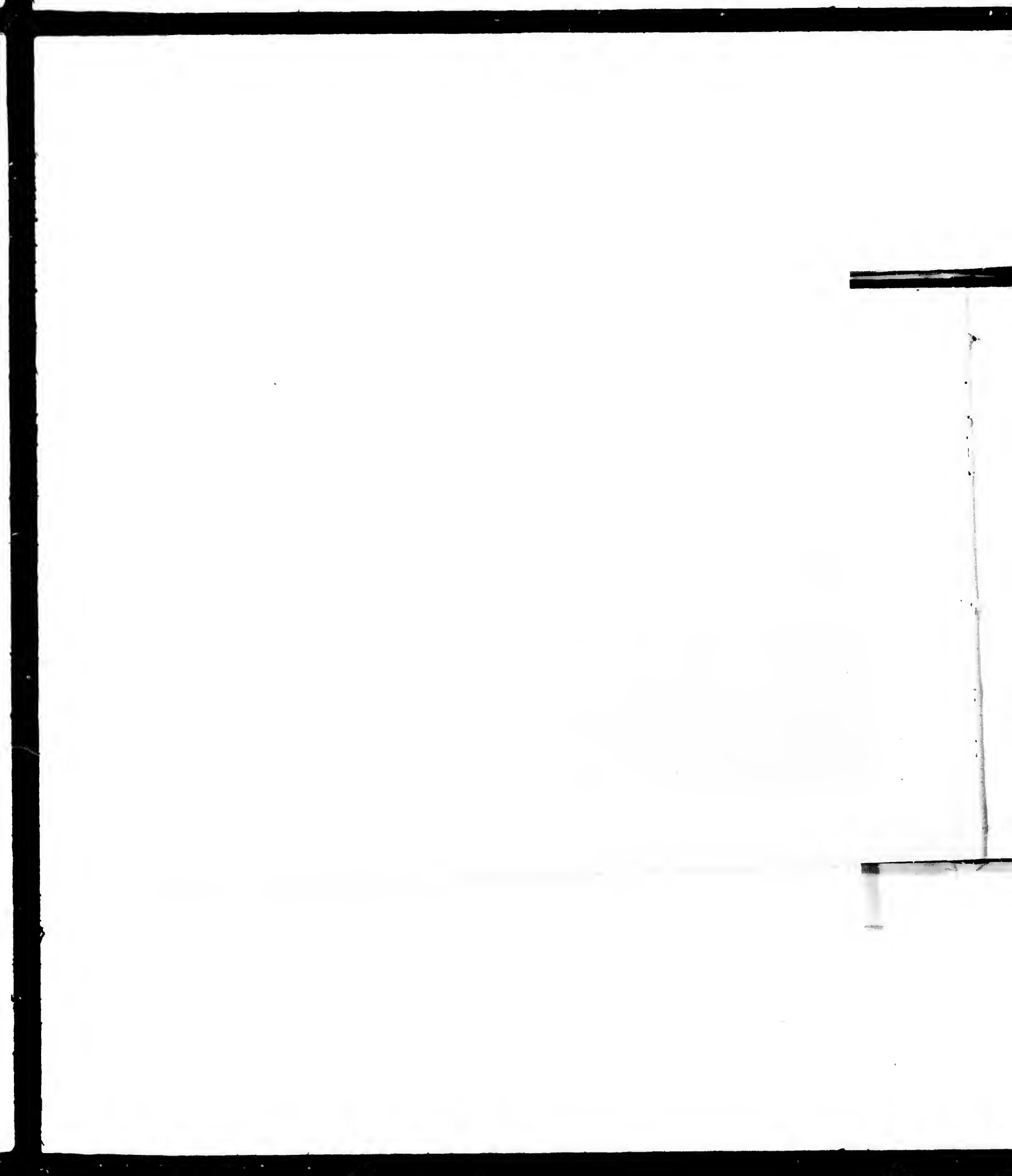


LAKE CHAMPLAIN FROM HOTEL AU SABLE CHASM



AU SABLE CHASM. THE LOWER GATEWAY







HOTEL CHAMPLAIN



VALCOUR ISLAND

EAST FROM HOTEL CHAMPLAIN

(South of Valcour Island occurred the first naval battle of the Revolution, October 11, 1776, between the British, under Capt. Pringle, and Americans, under BenJict Arnold.







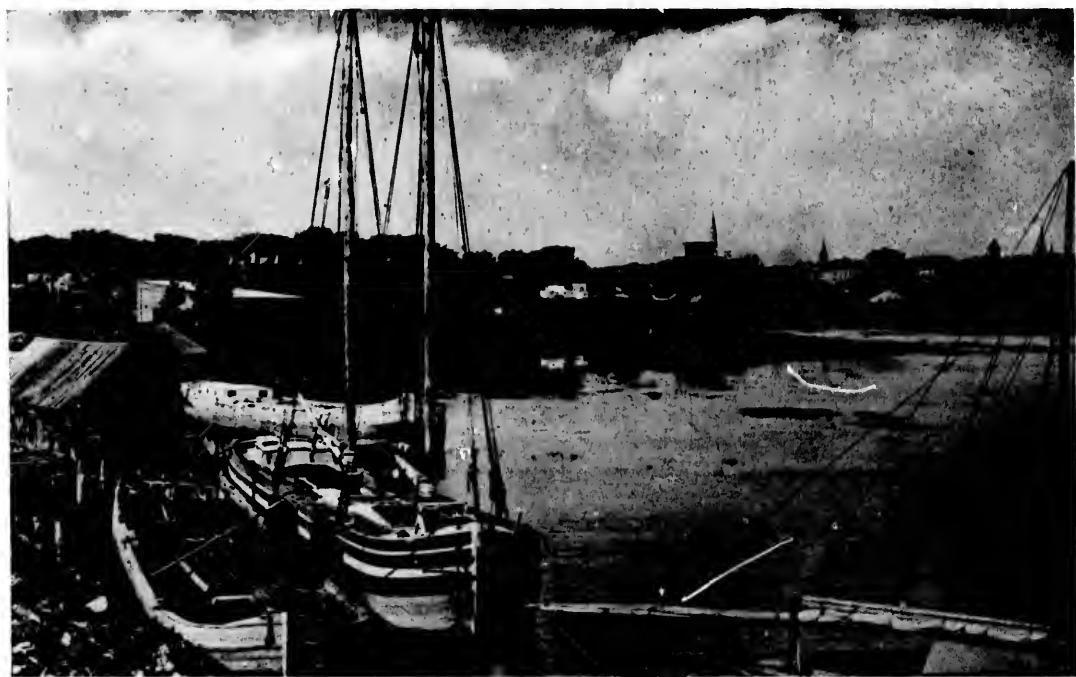
CUMBERLAND BAY

CUMBERLAND HEAD

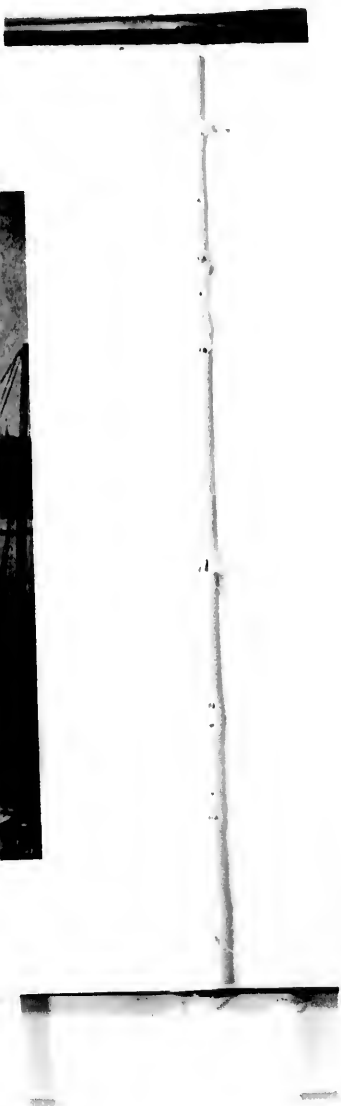
CRAB ISLAND

NORTH FROM HOTEL CHAMPLAIN

(Scene of the Battle of Plattsburgh, September 11, 1814. The sailors and marines who were killed in the engagement were buried on Crab Island.)



A GLIMPSE OF PLATTSSURGH





H.I. 111 133



13

14

15

16

17

18

19

20

21

22

23

24

25

26

27

28

29

30





