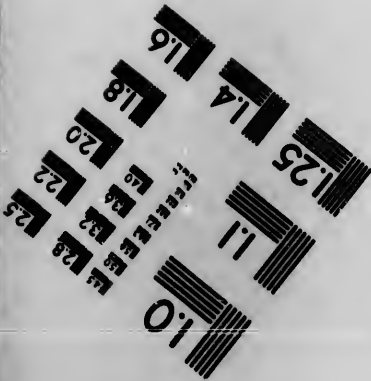
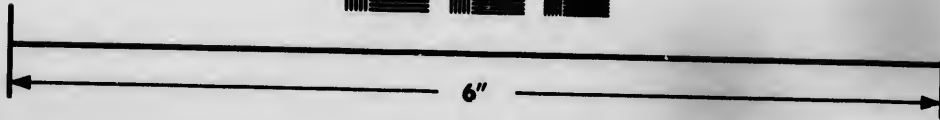
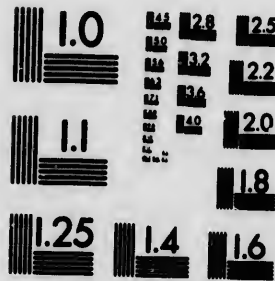


**IMAGE EVALUATION
TEST TARGET (MT-3)**



**Photographic
Sciences
Corporation**

23 WEST MAIN STREET
WEBSTER, N.Y. 14580
(716) 872-4503

**CIHM
Microfiche
Series
(Monographs)**

**ICMH
Collection de
microfiches
(monographies)**



Canadian Institute for Historical Microreproductions / Institut canadien de microreproductions historiques

© 1993

Technical and Bibliographic Notes / Notes techniques et bibliographiques

The Institute has attempted to obtain the best original copy available for filming. Features of this copy which may be bibliographically unique, which may alter any of the images in the reproduction, or which may significantly change the usual method of filming, are checked below.

L'Institut a microfilmé le meilleur exemplaire qu'il lui a été possible de se procurer. Les détails de cet exemplaire qui sont peut-être uniques du point de vue bibliographique, qui peuvent modifier une image reproduite, ou qui peuvent exiger une modification dans la méthode normale de filmage sont indiqués ci-dessous.

- Coloured covers/
Couverture de couleur
- Covers damaged/
Couverture endommagée
- Covers restored and/or laminated/
Couverture restaurée et/ou pelliculée
- Cover title missing/
Le titre de couverture manque
- Coloured maps/
Cartes géographiques en couleur
- Coloured ink (i.e. other than blue or black)/
Encre de couleur (i.e. autre que bleue ou noire)
- Coloured plates and/or illustrations/
Planches et/ou illustrations en couleur
- Bound with other material/
Relié avec d'autres documents
- Tight binding may cause shadows or distortion
along interior margin/
La reliure serrée peut causer de l'ombre ou de la
distorsion le long de la marge intérieure
- Blank leaves added during restoration may appear
within the text. Whenever possible, these have
been omitted from filming/
Il se peut que certaines pages blanches ajoutées
lors d'une restauration apparaissent dans le texte,
mais, lorsque cela était possible, ces pages n'ont
pas été filmées.

- Coloured pages/
Pages de couleur
- Pages damaged/
Pages endommagées
- Pages restored and/or laminated/
Pages restaurées et/ou pelliculées
- Pages discoloured, stained or foxed/
Pages décolorées, tachetées ou piquées
- Pages detached/
Pages détachées
- Showthrough/
Transparence
- Quality of print varies/
Qualité inégale de l'impression
- Continuous pagination/
Pagination continue
- Includes index(es)/
Comprend un (des) index

Title on header taken from: /
Le titre de l'en-tête provient:

- Title page of issue/
Page de titre de la livraison
- Caption of issue/
Titre de départ de la livraison
- Masthead/
Générique (périodiques) de la livraison

- Additional comments: /
Commentaires supplémentaires:

This item is filmed at the reduction ratio checked below/
Ce document est filmé au taux de réduction indiqué ci-dessous.

10X	12X	14X	16X	18X	20X	22X	24X	26X	28X	30X	32X
				J							

The copy filmed here has been reproduced thanks to the generosity of:

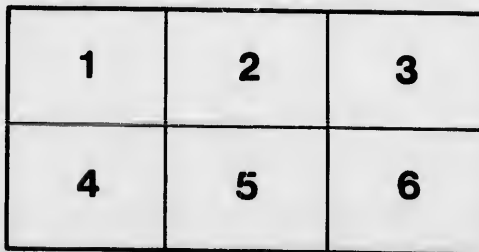
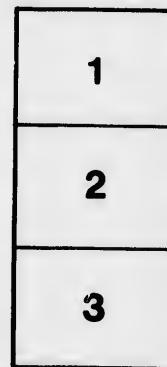
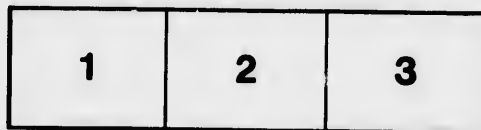
National Library of Canada

The images appearing here are the best quality possible considering the condition and legibility of the original copy and in keeping with the filming contract specifications.

Original copies in printed paper covers are filmed beginning with the front cover and ending on the last page with a printed or illustrated impression, or the back cover when appropriate. All other original copies are filmed beginning on the first page with a printed or illustrated impression, and ending on the last page with a printed or illustrated impression.

The last recorded frame on each microfiche shall contain the symbol \rightarrow (meaning "CONTINUED"), or the symbol ∇ (meaning "END"), whichever applies.

Maps, plates, charts, etc., may be filmed at different reduction ratios. Those too large to be entirely included in one exposure are filmed beginning in the upper left hand corner, left to right and top to bottom, as many frames as required. The following diagrams illustrate the method:



L'exemplaire filmé fut reproduit grâce à la générosité de:

Bibliothèque nationale du Canada

Les images suivantes ont été reproduites avec le plus grand soin, compte tenu de la condition et de la netteté de l'exemplaire filmé, et en conformité avec les conditions du contrat de filmage.

Les exemplaires originaux dont la couverture en papier est imprimée sont filmés en commençant par le premier plat et en terminant soit par la dernière page qui comporte une empreinte d'impression ou d'illustration, soit par le second plat, selon le cas. Tous les autres exemplaires originaux sont filmés en commençant par la première page qui comporte une empreinte d'impression ou d'illustration et en terminant par la dernière page qui comporte une telle empreinte.

Un des symboles suivants apparaîtra sur la dernière image de chaque microfiche, selon le cas: le symbole \rightarrow signifie "A SUIVRE", le symbole ∇ signifie "FIN".

Les cartes, planches, tableaux, etc., peuvent être filmés à des taux de réduction différents. Lorsque le document est trop grand pour être reproduit en un seul cliché, il est filmé à partir de l'angle supérieur gauche, de gauche à droite, et de haut en bas, en prenant le nombre d'images nécessaire. Les diagrammes suivants illustrent la méthode.

25

**QUEBEC
HORTICULTURAL SOCIETY.**

**LIST OF OFFICERS,
AND
SCHEDULE OF PRIZES**

OFFERED FOR THE YEAR

1867,

ALSO

RULES AND REGULATIONS.

**QUEBEC:
PRINTED BY A. COTÉ & CO.**

1867.

NOTE.—All expenses of management of Society being paid, the net balance of funds in hand will be apportioned off into prizes.

A. W.

Quebec Horticultural Society.

LIST OF OFFICERS.

President.

E. BURSTALL, ESQR.

Vice-Presidents.

ROBERT HAMILTON, ESQR.,

M. L'ABBÉ BRUNET,

GEORGE O'KILL STUART, ESQR.,

J. M. LEMOINE, ESQR.

Treasurer.

JOHN S. BOWEN, ESQR.

Secretary.

ALFRED WHEELER, ESQR.

Committee of Management.

HON. R. E. CARON,

REV. JAS. DOUGLAS,

CHAS. E. LEVEY, ESQR.,

N. H. BOWEN, ESQR.,

JAS. GIBB, ESQR., JUNR.,

COL. McCRAE,

E. GLACKEMEYER, ESQR.,

JAS. BELL FORSYTH, ESQR.,

JOHN GILMOUR, ESQR.,

J. E. DESCHAMPS, ESQR.,

JAMES GIBB, ESQ.

THE HISTORY OF THE

ROYAL SOCIETY OF LONDON

AND

THE SOCIETY OF ARTS

AND

THE SOCIETY OF MEDICINE

AND

THE SOCIETY OF AGRICULTURE

AND

THE SOCIETY OF COMMERCE

AND

THE SOCIETY OF MANUFACTURES

AND

THE SOCIETY OF ARTS

AND

THE SOCIETY OF MEDICINE

AND

THE SOCIETY OF AGRICULTURE

AND

THE SOCIETY OF COMMERCE

AND

Section.		1st.	2nd.	3rd.
CUT FLOWERS.				
12—	Best 24 Dahlias (Selfs) dissimilar, named...
13—	“ 18 do do do do
14—	“ 12 do do do do
15—	“ 6 do do do do
16—	“ 12 do (Fancies) do do
17—	“ 1 Bouquet Pompono Dahlias
18—	“ 6 Hollyhocks, Spikes, varieties,
19—	“ 12 do single blooms named...
20—	“ 12 Verbenas, 3 trusses of each do
21—	“ 12 Pansias, “
22—	“ 12 German Asters
23—	“ 12 French Asters
24—	“ 6 Gladiolus, Spikes, varieties
25—	“ 12 Roses, “ named...
26—	“ Collection of Immortelles
27—	“ Collection of Phlox Drummondii
28—	“ Collection of Double Zinnias
29—	“ Collection of Ornamental Grasses.....
30—	“ 1 Hand Bouquet
31—	“ 1 Large Table Bouquet.....
32—	“ 1 Bouquet of Everlastings.....
33—	“ Floral Design, not less than 3 ft. high..
34—	“ Device in Fruit and Flowers, suitable for dinner and supper table

SCHEDULE OF PRIZES.

nd. 3rd.

Section.	1st.	2nd.	3rd.
35—Best House (Miniature) with Parterre attached.....			

36— « Basket of Cut Flowers.....			
----------------------------------	--	--	--

37— « 6 Spikes, Ten week stocks.....			
--------------------------------------	--	--	--

FRUIT.

38— « 2 Bunches Black Grapes. named..			
--	--	--	--

39— « 2 do White do do ..			
--------------------------------	--	--	--

40— « Collection of Grapes, do ..			
--	--	--	--

41— « 2 Varieties Peaches, 5 of each, do ..			
---	--	--	--

42— « Dish of Nectarines			
--------------------------------	--	--	--

43— « Collection of Plums..			
-----------------------------------	--	--	--

44— « 1 Melon (Musk), named.....			
----------------------------------	--	--	--

45— « Basket of Fruit			
--------------------------------	--	--	--

VEGETABLES.

46— « 12 Tomatoes, named			
--------------------------------	--	--	--

47— « 6 Ears Sweet Corn, named			
--------------------------------------	--	--	--

48— « 2 Vegetable Marrows			
------------------------------------	--	--	--

49— « 2 Cucumbers, named			
--------------------------------	--	--	--

50— « 1 Squash			
-------------------------	--	--	--

51— « 2 Cauliflowers, named.			
-----------------------------------	--	--	--

52— « 2 Cabbages, Late, named			
-------------------------------------	--	--	--

53— « 2 do.. Savoy			
-----------------------------	--	--	--

SCHEDULE OF PRIZES.

Section.	1st.	2nd.	3rd.
54—Best 2 Cabbages, Red
55— “ 6 Heads Celery, Red, named.....
56— “ 6 do do White, “
57— “ 25 Pods Pease, “
58— “ 6 Early Horn Carrots
59— “ 6 Long Red “
60— “ 6 Beets, named.....
61— “ 6 Parsnips
62— “ 6 Turnips, named
63— “ 12 Onions, named
64— “ 4 Varieties Potatoes, 5 of each, named
65— “ Basket of Vegetables

CLASS B, OR AMATEURS' CLASS.
PLANTS IN POTS.

66—Best 2 Geraniums Zonales
67— “ 1 do Varigated
68— “ 2 Fuchsias.....
69— “ 6 Stocks, Ten Week
70— “ 2 Plants, not specified.....
71— “ 12 Dahlia Blooms, varieties
72— “ 6 do do “

Section.	1st.	2nd.	3rd.
73—Best 6 Hollyhocks Blooms, varieties
74— : 4 Gladiolus Spikes, :
75— : 12 Pansias, :
76— : 12 Asters
77— : 1 Hand Bouquet, open to all Ladies...
78— : Collection of Annual Phlox
79— : do of Annuals

MISCELLANEOUS CLASS,

OPEN TO ALL MEMBERS OF THE SOCIETY.

80—Best 1 Rustic Hanging Basket, made by Exhibitor, and filled with plants
81— : Specimen of Honey in the comb
82— : Tray of Fruit, Foreign and Native, open to Fruit dealers



Rules and Regulations.

1st. All articles for competition to be, bona fide, the growth or production of competitors or to have been under their care for at least 2 months previous to the exhibition, and if proved not to be such, the competitor to be disqualified for receiving any prize.

2nd. All articles intended for competition must be placed on the tables by ten o'clock, A. M. **THIS RULE WILL BE STRICTLY ADHERED TO.**

3rd. All articles shall remain in the building until the close of the Exhibition.

4th. A discretionary power shall be granted to the judges, of withholding prizes, if in their opinion the articles exhibited do not merit them.

5th. That a discretionary power be also granted to the judges to award extra prizes, for any new, or rare, fruit, flowers, plants or other objects of interest, for which no special prize has been offered.

6th. Competitors will not be allowed to take more than one prize in the same section, and no articles for which a prize has already been awarded, shall be entitled to another.

7th. No person, except the judges, shall be allowed to touch or handle any articles exhibited.

8th. The decision of the judges, as regards the prizes, must be considered final.

9th. The judges shall not be competitors in that class for which they are to award prizes.

10th. No persons allowed to be present while the judges are awarding the prizes, except the reporters of the press.

11th. Any deviation, more or less, from the exact quantities or numbers specified in the schedule will disqualify a competitor.

12th. All persons who intend competing for prizes generally, must previously pay their annual subscription of \$2.00 to the treasurer.

13th. The gardeners class will be open to amateurs, but no gardener will be allowed to compete in the amateurs class.

14th. An annual subscriber of \$2.00 becomes a member of the society, and is entitled to a ticket of admission for self and Lady to the exhibition.

15th. That four in the committee of management do constitute a quorum.

16th. All articles for which the name is required in the schedule must be correctly named, and all plants in pots have their scientific name legibly written on the label.

