

**CIHM
Microfiche
Series
(Monographs)**

**ICMH
Collection de
microfiches
(monographies)**



Canadian Institute for Historical Microreproductions / Institut canadien de microreproductions historiques

© 1996

Technical and Bibliographic Notes / Notes technique et bibliographiques

The Institute has attempted to obtain the best original copy available for filming. Features of this copy which may be bibliographically unique, which may alter any of the images in the reproduction, or which may significantly change the usual method of filming are checked below.

- Coloured covers / Couverture de couleur
- Covers damaged / Couverture endommagée
- Covers restored and/or laminated / Couverture restaurée et/ou pelliculée
- Cover title missing / Le titre de couverture manque
- Coloured maps / Cartes géographiques en couleur
- Coloured ink (i.e. other than blue or black) / Encre de couleur (i.e. autre que bleue ou noire)
- Coloured plates and/or illustrations / Planches et/ou illustrations en couleur
- Bound with other material / Relié avec d'autres documents
- Only edition available / Seule édition disponible
- Tight binding may cause shadows or distortion along interior margin / La reliure serrée peut causer de l'ombre ou de la distorsion le long de la marge intérieure.
- Blank leaves added during restorations may appear within the text. Whenever possible, these have been omitted from filming / Il se peut que certaines pages blanches ajoutées lors d'une restauration apparaissent dans le texte, mais, lorsque cela était possible, ces pages n'ont pas été filmées.
- Additional comments / Commentaires supplémentaires:

L'Institut a microfilmé le meilleur exemplaire qu'il lui a été possible de se procurer. Les détails de cet exemplaire qui sont peut-être uniques du point de vue bibliographique, qui peuvent modifier une image reproduite, ou qui peuvent exiger une modifications dans la méthode normale de filmage sont indiqués ci-dessous.

- Coloured pages / Pages de couleur
- Pages damaged / Pages endommagées
- Pages restored and/or laminated / Pages restaurées et/ou pelliculées
- Pages discoloured, stained or foxed / Pages décolorées, tachetées ou piquées
- Pages detached / Pages détachées
- Showthrough / Transparence
- Quality of print varies / Qualité inégale de l'impression
- Includes supplementary material / Comprend du matériel supplémentaire
- Pages wholly or partially obscured by errata slips, tissues, etc., have been refilmed to ensure the best possible image / Les pages totalement ou partiellement obscurcies par un feuillet d'errata, une pelure, etc., ont été filmées à nouveau de façon à obtenir la meilleure image possible.
- Opposing pages with varying colouration or discolourations are filmed twice to ensure the best possible image / Les pages s'opposant ayant des colorations variables ou des décolorations sont filmées deux fois afin d'obtenir la meilleur image possible.

This item is filmed at the reduction ratio checked below /
Ce document est filmé au taux de réduction indiqué ci-dessous.

10X	12X	14X	16X	18X	20X	22X	24X	26X	28X	30X	32X
<input type="checkbox"/>	<input type="checkbox"/>	<input type="checkbox"/>	<input type="checkbox"/>	<input type="checkbox"/>	<input type="checkbox"/>	<input type="checkbox"/>	<input type="checkbox"/>	<input checked="" type="checkbox"/>	<input type="checkbox"/>	<input type="checkbox"/>	<input type="checkbox"/>

The copy filmed here has been reproduced thanks to the generosity of:

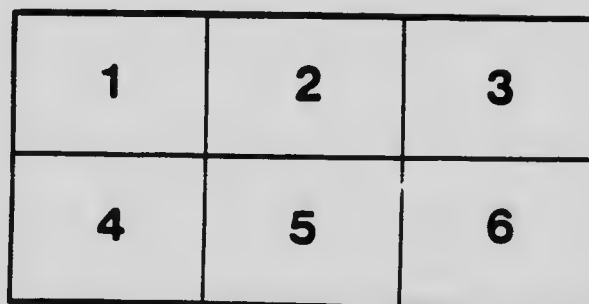
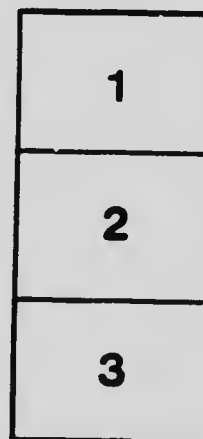
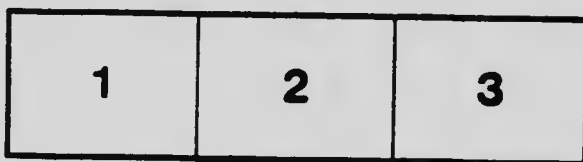
Lakehead University,
Chancellor Paterson Library,
Thunder Bay

The images appearing here are the best quality possible considering the condition and legibility of the original copy and in keeping with the filming contract specifications.

Original copies in printed paper covers are filmed beginning with the front cover and ending on the last page with a printed or illustrated impression, or the back cover when appropriate. All other original copies are filmed beginning on the first page with a printed or illustrated impression, and ending on the last page with a printed or illustrated impression.

The last recorded frame on each microfiche shall contain the symbol \rightarrow (meaning "CONTINUED"), or the symbol ∇ (meaning "END"), whichever applies.

Maps, plates, charts, etc., may be filmed at different reduction ratios. Those too large to be entirely included in one exposure are filmed beginning in the upper left hand corner, left to right and top to bottom, as many frames as required. The following diagrams illustrate the method:



L'exemplaire filmé fut reproduit grâce à la générosité de:

Lakehead University,
Chancellor Paterson Library,
Thunder Bay

Les images suivantes ont été reproduites avec le plus grand soin, compte tenu de la condition et de la netteté de l'exemplaire filmé, et en conformité avec les conditions du contrat de filmage.

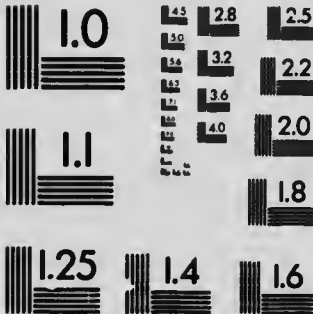
Les exemplaires originaux dont la couverture en papier est imprimée sont filmés en commençant par le premier plat et en terminant soit par la dernière page qui comporte une empreinte d'impression ou d'illustration, soit par le second plat, selon le cas. Tous les autres exemplaires originaux sont filmés en commençant par la première page qui comporte une empreinte d'impression ou d'illustration et en terminant par la dernière page qui comporte une telle empreinte.

Un des symboles suivants apparaîtra sur la dernière image de chaque microfiche, selon le cas: le symbole \rightarrow signifie "A SUIVRE", le symbole ∇ signifie "FIN".

Les cartes, planches, tableaux, etc., peuvent être filmés à des taux de réduction différents. Lorsque le document est trop grand pour être reproduit en un seul cliché, il est filmé à partir de l'angle supérieur gauche, de gauche à droite, et de haut en bas, en prenant le nombre d'images nécessaire. Les diagrammes suivants illustrent la méthode.

MICROCOPY RESOLUTION TEST CHART

(ANSI and ISO TEST CHART No 2)



APPLIED IMAGE Inc

1653 East Main Street
Rochester, New York 14609 USA
(716) 482 - 0300 - Phone
(718) 288 - 5989 - Fax

F
1059
1912

1912

A City You're Invited

to Live in— *Fort*



Camera Glimpses

OF THE

City of Port Arthur

ONTARIO CANADA

*The silver gate to the golden West,
Where rail and water meet.*

Arranged and Edited by

N. G. NEILL
INDUSTRIAL COMMISSIONER

PRINTED ON THE PRESSSES OF
THE DAILY NEWS
PORT ARTHUR - CANADA

Gordon Smith

Dedicated By The Citizens

To

Strangers who have tarried with us
Looked our city up and down,
Met our men and viewed our buildings,
Marvelled at the land of promise
And the future held in store.

To

Others who have never seen us,
Never heard what riches lie
Waiting for the hand of mankind,
You, we ask to come, and welcome
To The Gateway of The West

“**S**URE, you would think this was a city with a population of at least 150,000, judging by the wide, paved streets, big hotels, boulevarded roadways, and your electric lights,” remarked a friend from Ireland, as we landed from a lake steamer at Port Arthur on a beautiful summer morning.

And, in truth, it has the spirit and go of a much bigger city than it is in reality, but the people have always had in view the big idea in all their schemes of development and improvement.

And justly so. For with the tremendous growth which Canada is experiencing, the City of Port Arthur, the great economic industrial hub of Western Canada, and the one point from where the markets of Eastern Canada can at the same time be reached, with its transportation facilities, water falls, iron ore, lumber, and, to crown all, an attractive city in which to make your home, with modern stores, handsome homes, good schools, churches, clubs, theatres, and the one and many big and little social features which all go to make life worth living;

with an ideal climate, not too hot in summer and seldom experiencing severe cold in winter, and only a light snow fall, with the MAXIMUM of sunshine and the MINIMUM of wet weather; surrounded by rich Mining and Agricultural districts, and with every facility for sport.

Port Arthur is a wealthy city, owning and operating the water works, street railway system, electric light and power, and telephone system. The \$2,000,000 invested in these utilities is gradually being paid off by the revenues therefrom. What a future in this direction alone!

Having a good thing, we want you to share it with us.

Look through this book and let the evidence of the kodak inspire you to know more.

N. G. Neill, the Industrial Commissioner Port Arthur, will esteem it a pleasure to answer to the best of his ability any and all questions dealing with adjacent farming, dairying, and market gardening; the surrounding country as a sportsman's paradise; with the city as a home town, or as a manufacturing centre.



The first glimpse on arriving at Port Arthur either by boat or rail. The Prince Arthur Hotel, owned and operated by the Canadian Northern Railway, one of the finest hotels in Western Canada, is shown in the center, the Canadian Pacific Railway Station on the right, and the City Publicity and Industrial Bureau on the left.



ONE OF THE MANY RETAIL CORNERS



IN THE HEART OF THE CITY

Clean roadways, broad sidewalks, and well lighted at night.



ONE OF OUR AMUSEMENT HOUSES



CUMBERLAND STREET

Note the paved roadways, and almost entire absence of poles



AN ATTRACTIVE OFFICE BUILDING



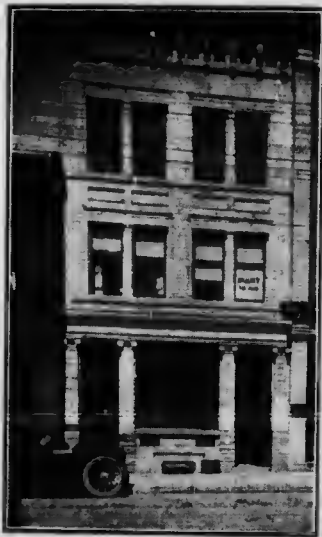
Where One of Port Arthur's Daily Newspapers is Published



Hall Erected by the Finnish People in Port Arthur at a cost of \$50,000



One of Port Arthur's Six Banking Institutions



A NEW BANK BUILDING

Port Arthur's splendid development is shown in the growth of her banking institutions. Last year, 1910, one new bank was established and one banking institution erected a handsome new building, while two more of Port Arthur's banks are considering the erection of more commodious buildings.

Port Arthur has branches of the leading Canadian chartered banks: Bank of Montreal, Bank of Nova Scotia, Canadian Bank of Commerce, Molsons Bank, Imperial Bank, and Ray, Street & Co., private bankers, as well as a Post Office Savings Bank.

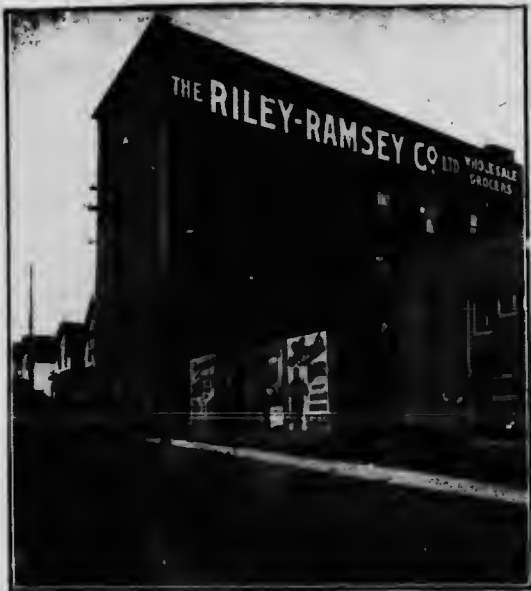
Meet our bankers and talk over the location of your factory at Port Arthur.



Where the "Daily News" paper of Port Arthur is published.



aper of
d.



IN THE WHOLESALE DISTRICT



ONE OF PORT ARTHUR'S LEADING DEPARTMENTAL STORES

The city has the attractions and conveniences of a big city.



A PROGRESSIVE SIGN

The Industrial Development and Publicity Bureau of the City of Port Arthur.

A Civic Institution to promote the growth of the city under the supervision of the Augmented Industrial Committee, composed of members of the City Council, Board of Trade, and the Commercial Club. The expenses of this department are defrayed from the regular city revenue.

In this building the Industrial Commissioner has his office, and the staff of the Department are always ready to welcome visitors and give information to strangers.



THE AVENUE OF BIRCHES



A Mountain Stream Flows through the Heart of the Residential District, and many a wily trout therefrom adorns the breakfast table.



RESIDENCE OF A LEADING CITIZEN OF PORT ARTHUR



PORT ARTHUR HAS MANY HANDSOME RESIDENCES, SURROUNDED BY WELL KEPT LAWNS AND LUXURIOUS FOLIAGE .



THE BROADWAY LEADING TO THE HILL CREST



PORT ARTHUR'S MAIN STREETS, BOTH BUSINESS AND RESIDENTIAL, ARE PERMANENTLY PAVED



AN ATTRACTIVE HOME IN PORT ARTHUR



SIX YEARS AGO THIS WAS IN THE WOODS



Few places equal Port Arthur as a residential city, built on a hillside, rising in three natural terraces to a height of 250 feet, her streets paved and with concrete sidewalks with a large portion of them boulevarded and lined with foliage. Four mountain streams flow through the city adding materially to the beauty of the aspect. The appearances of the residences is enhanced by the growth of almost all sorts of flowers in their respective seasons. The soil is rich so that a small plot of ground affords an ample supply of vegetables for a large family. From almost any point in the city a magnificent panoramic view of the picturesque Thunder Bay, with the renowned cliffs of Sleeping Giant in the distance is afforded. And on north, south and west mountain ranges tower up, at a distance of ten miles or more from the city.

It needs an artist's touch to faithfully depict the beauty of the sunset as it reflects in constantly varying tints on the cliffs of Sleeping Giant, and gradually floods the valley of the Kaministiquia with its wonderful colors, sinking, with the close of day, behind the mountains. One is impressed with the magnitude of the view and realizes that mankind is a small factor compared to the works of Nature.



ONE OF THE FOUR WARD SCHOOLS



THE REGISTRY OFFICE

Port Arthur is the Judicial Centre for Thunder Bay District, and all government offices, both Dominion and Provincial, are located here.



under Bay
minton and



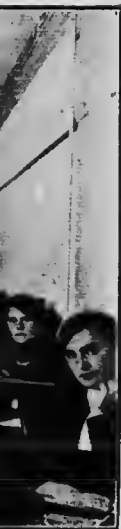
THE COLLEGIATE INSTITUTE

This handsome edifice, constructed of native stone, erected in 1919 at a cost of \$150,000, embraces classes in Manual Training, Chemistry, Natural History, and Domestic Science, in addition to the regular studies, also a Gymnasium and Cadet Corps. Education is free and under a system of compulsory attendance up to the age of 16. There is altogether an attendance at the various schools of 1,547 scholars, with a staff of thirty teachers.



VIEWS IN THE NATIONAL BUSINESS COLLEGE — TRAINING YOUNG PEOPLE FOR THE OFFICES

The Manufacturer can get competent help in Port Arthur.



Y. M. C. A. COSTING \$75,000



THE MASONIC TEMPLE, PORT ARTHUR



MARIAGGI HOTEL



ALGOMA HOTEL



WESTERN HOTEL



PORT ARTHUR CROWDS ON HOLIDAY BENT



THE CENTRAL FIRE HALL—Modern and Efficient



POST OFFICE, PORT ARTHUR



ST. JOSEPH'S HOSPITAL



THE RAILWAY, MARINE AND GENERAL HOSPITAL



BAPTIST CHURCH



METHODIST CHURCH



PRESBYTERIAN CHURCH.



ROMAN CATHOLIC CHURCH.

The Roman Catholics are considering plans for a handsome new church, and the Anglicans have secured a magnificent site on the brow of the hill, where they intend to build a new and stately edifice.

"The pealing of the Bells on Sabbath morn

Calls one and all to service.

The Day of Rest is here observed

As should be in a city striving to be great."



ANGLICAN CHURCH.

RICH FARM LANDS SURROUND PORT ARTHUR



Port Arthur agricultural areas are worthy of special attention. The land is largely covered with a light bush, which, once cleared off, reveals rich soil for the growing of nearly all crops. Potatoes yield a big crop—550 bushels to the acre being not uncommon. The above picture shows a comfortable home after only four years' work.

THE LAND OF THE DAIRYMAN AND GARDENER



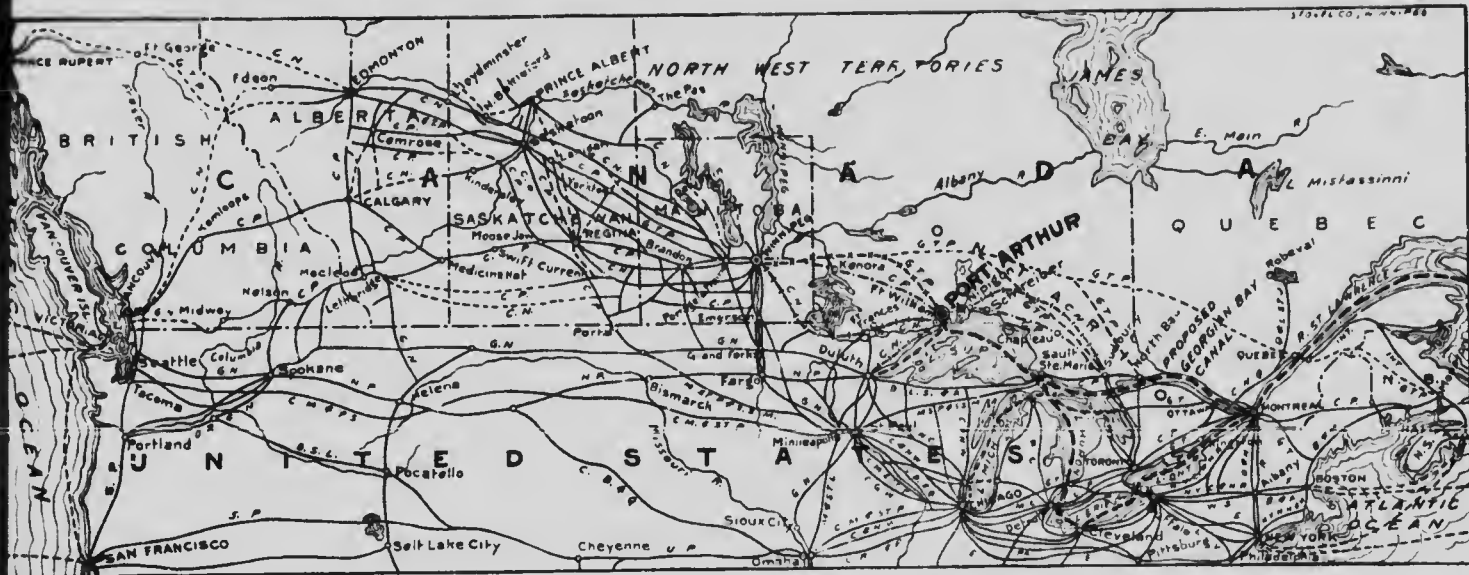
The Farming Element is just beginning to demonstrate itself, the country only being opened up to any extent in the last ten years. There are still free grant lands among the hills and valleys, with splendid mountain streams, plenty of wood for building and heating purposes, and with a delightful climate. There are great opportunities here for market gardening and dairying.



reveals rich
re shows a



Fort Arthur, 1,700 miles inland from the Atlantic Ocean and 1,900 miles overland to the Pacific, is the terminus of Canada's wonderful economic water transportation system, the point where the great railways of the West—the Canadian Northern, Canadian Pacific, and the Grand Trunk Pacific—meet the steamships of the East.



4 per cent. of Canada's total area lies to the west of Port Arthur. Of 26,000 miles of railway in Canada, there is already 12,000 in the West as compared with 14,000 miles in the East.

SPEND YOUR VACATION

In an interesting and invigorating trip across the great inland seas of Canada to Port Arthur via the Merchants' Mutual all-water route from Montreal and intermediate ports; the Canadian Pacific steamships from Owen Sound, Ontario, the Northern Navigation Company's steamers from Sarnia, or the Northern Navigation or Booth Line steamers from Duluth, Minnesota.

Many of the passenger steamers on Canada's great inland lakes have crossed the ocean. Until quite recently they were mostly built in English shipyards. The traveller finds on one of these boats, 365 feet in length, carrying 500 passengers, every comfort and convenience which can be desired, and the trip by boat to Port



A TYPICAL LAKE PASSENGER STEAMER

Arthur is one of constant interest and varying scenery. As the rugged shoreline and purple tipped hills fade from view and the broad expanse of Lake Superior, the largest generally travelled lake in the world with an area of 31,800 square miles, stretches away to the horizon you are soon out of sight of land.

This trip affords an object lesson in Canada's commerce on the lakes, as you are seldom during a cruise from any eastern point out of sight of steamers. One sees freight steamers of 12,000 tons, 600 feet in length, carrying 100,000 bushels of wheat, which takes 400 freight cars to bring from the Western farms to Port Arthur. These boats bring coal from the East and carry back their precious burdens of wheat and other grains. These vessels are often worth \$500,000.

Write to N. G. Neill, Industrial Commissioner of Port Arthur, for any information regarding routes, hotels, etc.

erest and
ged shore-
fade from
of Lake
travelled
a of 31,800
to the horl
f land.

Lesson in
es, as you
from any
steamers
2,000 tons,
600 bushels
ht cars to
s to Port
d from the
ous bur-
s. These
.

rial Com-
any Infor-
s, etc.



POWER CHEAP AND SURE

Port Arthur has three immense water falls within easy reach and controls, therefore, a source of power which is everlasting, replenished with the snow and rain.

145,000 horse power is available. A portion of this is already developed with duplicate installation from penstock to supply wires.

The manufacturer locating his factory at Port Arthur has the greatest assurance of a steady and continuous supply of power 365 days in the year, 24 hours per day. Quotations ranging from \$15.00 to \$25.00 per horse power per annum.





ONE OF THE NEW INDUSTRIES AT PORT ARTHUR

With the Dry Docks, a view of which is seen later, this plant represents an expenditure of \$1,250,000, and is the largest Dry Dock and Ship-Building plant on the Great Lakes. Additional buildings are being erected for the manufacture of Bolders, Tank Work, Structural Steel, etc. 400 men are now employed. Within two years' time it is expected that 1,000 hands will be employed.

BUILD YOUR FACTORY IN PORT ARTHUR



PAY NIGHT AT ONE OF PORT ARTHUR'S MANUFACTURING PLANTS

Building
men are



THE ATIKOKAN IRON CO.'S BLAST FURNACE, PORT ARTHUR



IF YOU USE PIG IRON, LOCATE YOUR FACTORY IN PORT ARTHUR

A closer view of the Blast Furnace of the Atkokan Iron Company, with a capacity of 200 tons per day. The ore is brought from the Atkokan range, 126 miles to the west, and is a high grade, 60 per cent magnetic ore. This plant is turning out an exceptionally strong grade of pig iron.



BIRD'S-EYE VIEW OF THE COAL DOCKS AT PORT ARTHUR

From here a large portion of the Northwest receives its coal. Port Arthur has cheap coal. Get quotations on your requirements



The Dry Dock of the Western Dry Dock and Ship-Building Company, 700 feet in length, 80 feet wide at the base and 100 feet wide at the crown.



THE PIGEON RIVER LUMBER COMPANY, PORT ARTHUR

These Mills have a capacity of 50,000,000 feet per year

if you use lumber locate your plant in Port Arthur. Get Quotations on your specifications.



THE LARGEST ELEVATOR IN THE WORLD AT PORT ARTHUR, THE HEAD OF THE LAKES

This elevator and store house has a capacity of 7,000,000 bushels. For the year ending August 31, 1911, 57,000,000 bushels of grain were shipped from the head of the lakes.



VIEW OF RAILWAY TERMINALS AT PORT ARTHUR

Two hundred miles of trackage and five thousand men, with a yearly pay roll of \$3,000,000.00, are required to handle the transportation at the head of the lakes



THE LATEST ADDITION TO OUR INDUSTRIAL DEVELOPMENT

The Port Arthur Waggon Works, under construction. This plant expects to be in operation by January, 1912. \$350,000 will be expended in buildings and machinery. The plant will have a capacity of 15,000 farm waggons per year and will give employment to about 200 men.



AN EXTENSIVE QUARRY AND ROCK CRUSHING PLANT

The plant of Stewart and Hewitson. Road building and construction requiring crushed rock being carried out on a large scale, this plant is taxed to its utmost.



An important industry of Lake Superior is Fishing. Port Arthur and the smaller places along the north shore all have their quota of fishing tugs. The Dominion Government has just completed at Port Arthur the first Fish Hatchery on the north shore of Lake Superior. It will be a prominent factor in the development of the fishing industry. The catch consists of Trout, Whitefish, Yellow Pickerel, Blue Fls and Herring.



A prominent feature of Port Arthur's industrial development is the housing question. This picture shows a group of modern cottages, equipped with hot air furnaces, good basement, living room, dining room, and kitchen, two bedrooms, and a modern bath room.

Cottages with land can be rented for from \$10.00 per month upward.

The spirit of Port Arthur is "Own your own Home," and once you know Port Arthur you will want to live there.



For the lover of sport Port Arthur is an Eldorado. The above picture represents one of the four-oared crews out for a spin



Big game hunting, the exciting chase of the moose, as shown in these pictures, is only one of the sports. Partridge in season can be secured in abundance, and the skin of many a bear shot within a radius of 10 miles of Port Arthur, adorns the library floors. For the follower of Isaac Walton, the streams abound in trout. And with golf links, tennis courts, bowling, both on the green and alleys, canoeing, sailing, and baseball. In the winter, curling, snowshoeing, skating, skiing and driving, there is every opportunity for the man living in Port Arthur to have a good time all the year round.

Come and See by Yourself

the City of Port Arthur, which, as you can judge from the descriptions in this book, has wonderful possibilities for growth and development, as she is built on the three foundation stones essential to a big city—location at the head of a great waterway, representing transportation; natural resources in iron ore and water falls, representing manufacturing; and surrounded by rich farm lands, representing agriculture.



Private Yacht "Sigma" owned by Mr. James Whalen, President of the Western Dry Dock and Shipbuilding Company, sailing amongst the islands and headlands of Thunder Bay

The City of Port Arthur

backed by men who fully realize that a City is not alone its shops and factories, but is to a large extent the gathering together of live and progressive men and women, and realizing the advantages which exist, invites you to become one of them and inherit the greatest opportunity that exists in Canada today for future prosperity.

N. G. NEILL,
Industrial Commissioner.

VIEWS

1912

