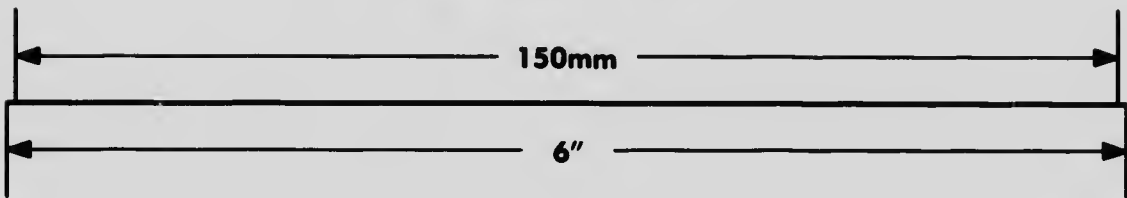
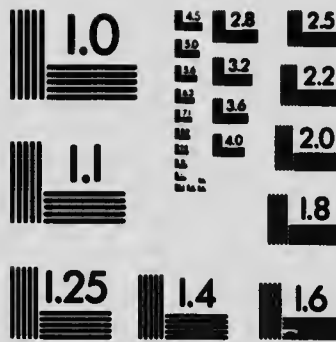
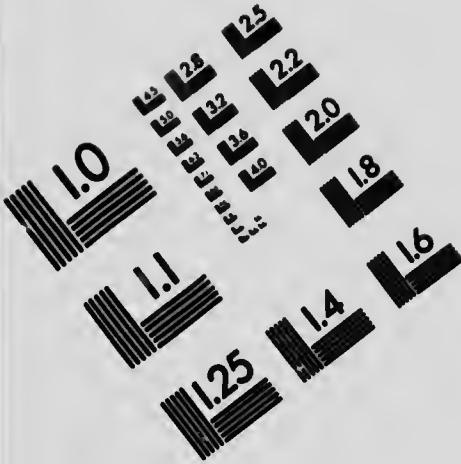


# IMAGE EVALUATION TEST TARGET (MT-3)



**APPLIED IMAGE, Inc**  
 1653 East Main Street  
 Rochester, NY 14609 USA  
 Phone: 716/482-0300  
 Fax: 716/288-5969

© 1993, Applied Image, Inc., All Rights Reserved

**CIHM  
Microfiche  
Series  
(Monographs)**

**ICMH  
Collection de  
microfiches  
(monographies)**



**Canadian Institute for Historical Microreproductions / Institut canadien de microreproductions historiques**

**© 1994**



The copy filmed here has been reproduced thanks to the generosity of:

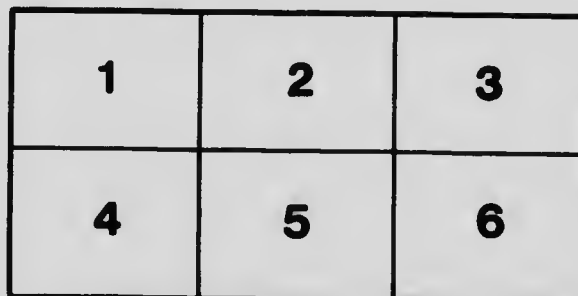
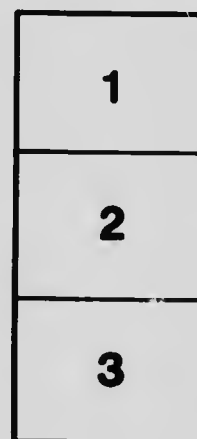
National Library of Canada

The images appearing here are the best quality possible considering the condition and legibility of the original copy and in keeping with the filming contract specifications.

Original copies in printed paper covers are filmed beginning with the front cover and ending on the last page with a printed or illustrated impression, or the back cover when appropriate. All other original copies are filmed beginning on the first page with a printed or illustrated impression, and ending on the last page with a printed or illustrated impression.

The last recorded frame on each microfiche shell contains the symbol  $\rightarrow$  (meaning "CONTINUED"), or the symbol  $\nabla$  (meaning "END"), whichever applies.

Maps, plates, charts, etc., may be filmed at different reduction ratios. Those too large to be entirely included in one exposure are filmed beginning in the upper left hand corner, left to right and top to bottom, as many frames as required. The following diagrams illustrate the method:



L'exemplaire filmé fut reproduit grâce à la générosité de:

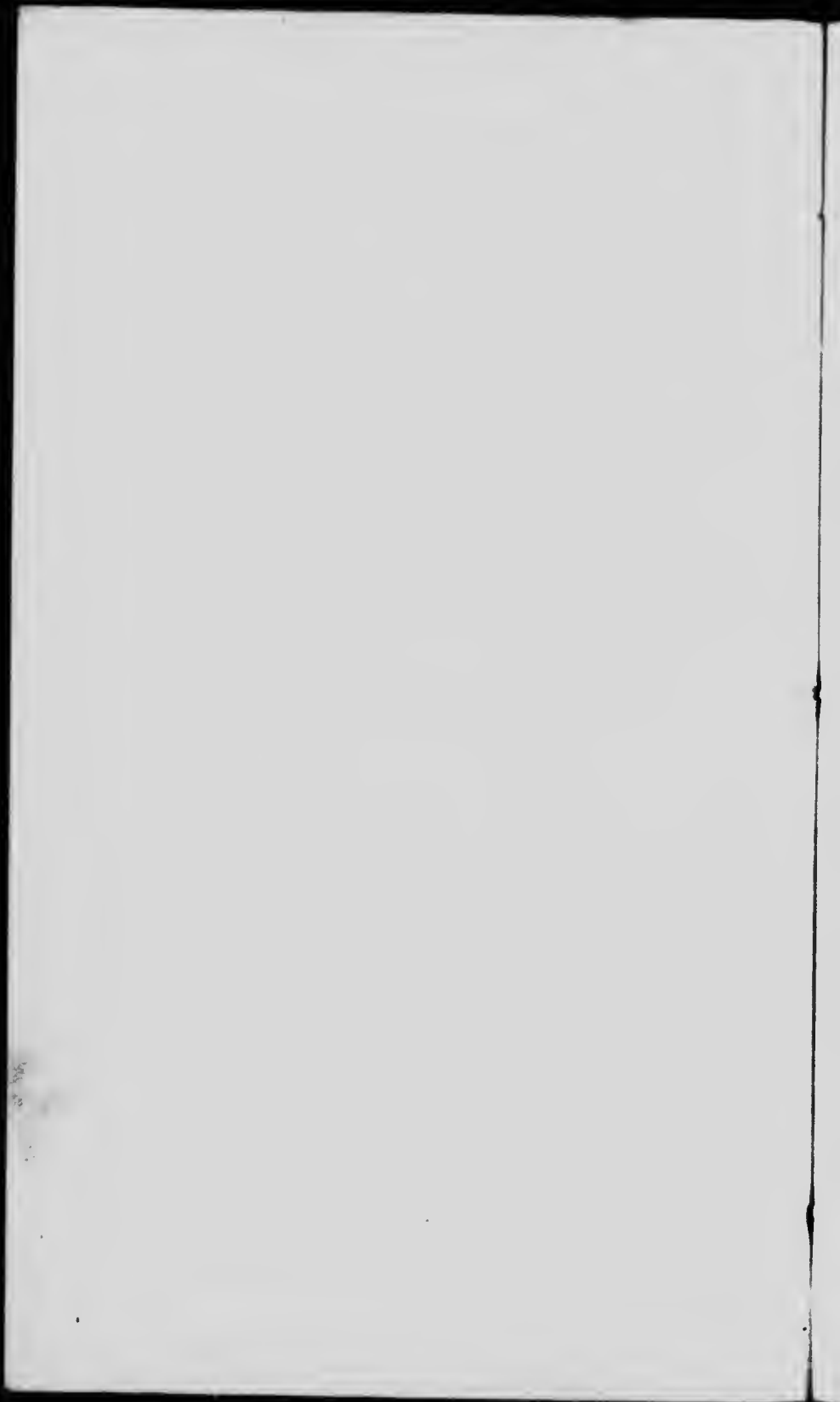
Bibliothèque nationale du Canada

Les images suivantes ont été reproduites avec le plus grand soin, compte tenu de la condition et de la netteté de l'exemplaire filmé, et en conformité avec les conditions du contrat de filmage.

Les exemplaires originaux dont la couverture en papier est imprimée sont filmés en commençant par le premier plat et en terminant soit par la dernière page qui comporte une empreinte d'impression ou d'illustration, soit par le second plat, selon le cas. Tous les autres exemplaires originaux sont filmés en commençant par la première page qui comporte une empreinte d'impression ou d'illustration et en terminant par la dernière page qui comporte une telle empreinte.

Un des symboles suivants apparaît sur la dernière image de chaque microfiche, selon le cas: le symbole  $\rightarrow$  signifie "A SUIVRE", le symbole  $\nabla$  signifie "FIN".

Les cartes, planches, tableaux, etc., peuvent être filmés à des taux de réduction différents. Lorsque le document est trop grand pour être reproduit en un seul cliché, il est filmé à partir de l'angle supérieur gauche, de gauche à droite, et de haut en bas, en prenant le nombre d'images nécessaire. Les diagrammes suivants illustrent la méthode.



# TABLES

SHOWING THE VALUE  
OF

## Instalment Bonds

PAYING INTEREST ANNUALLY AT  
THE RATES PER ANNUM OF

$2\frac{1}{2}\%$ ,  $3\%$ ,  $3\frac{1}{2}\%$ ,  $4\%$ ,  $4\frac{1}{2}\%$   
and  $5\%$ ,

AND  
MATURING IN PERIODS FROM  
ONE TO THIRTY YEARS

---

Presented by  
**The Central Canada Loan & Savings Co'y**  
Dealers in  
**BOND INVESTMENTS**  
Corner King and Victoria Streets  
TORONTO, ONT.

HG4537

T33

1901

Entered according to Act of the Parliament of  
Canada, in the year MCM1, by THE CENTRAL CANADA  
LOAN AND SAVINGS COMPANY at the Department of  
Agriculture.

## PREFACE

---

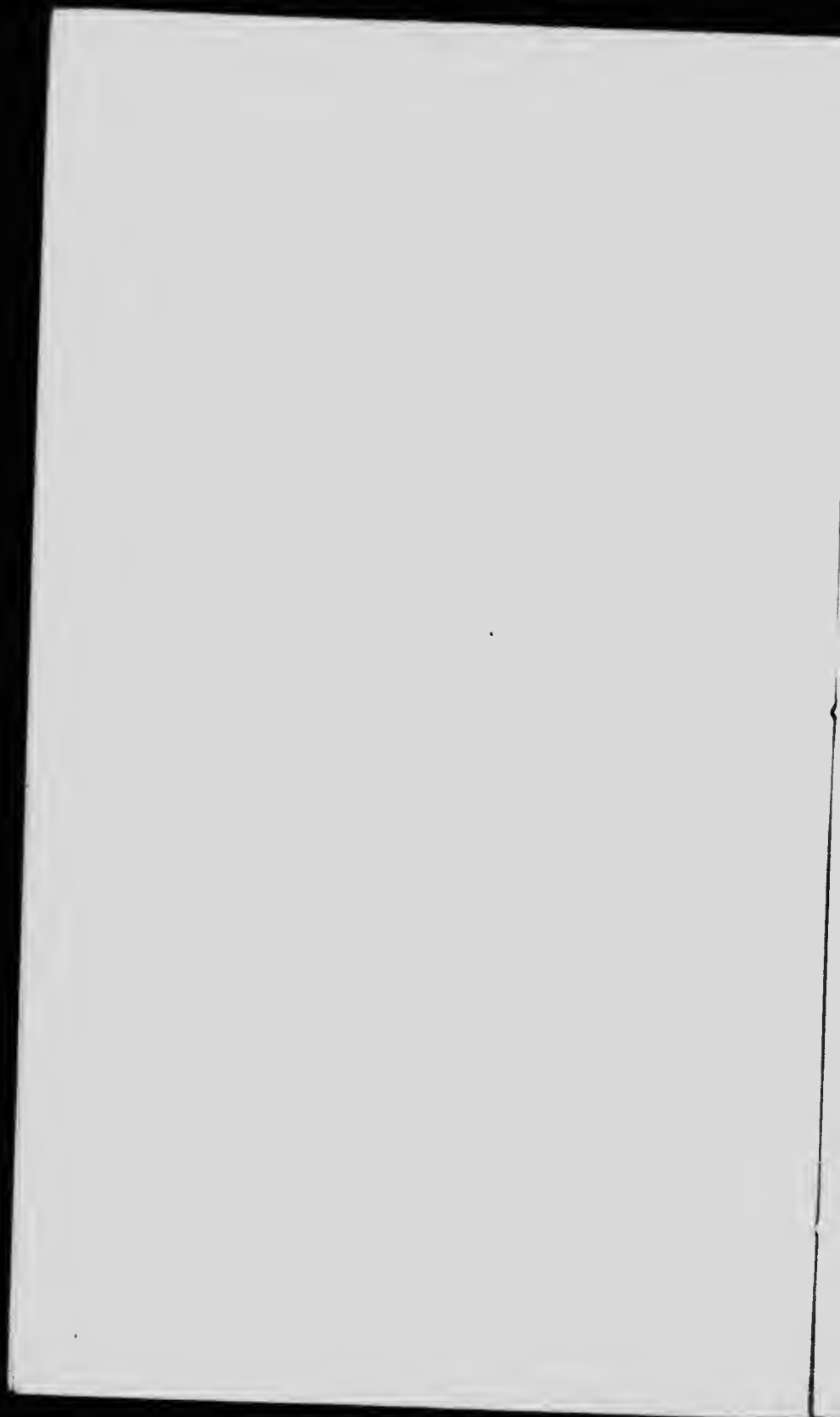
THE within tables are for the purpose of valuing Debentures (bearing yearly interest), the principal of which is repayable in annual instalments, so that the total amount paid each year (including both principal and interest) is the same.

### EXAMPLE.

Given a \$1000.00 5% bond, repayable in 17 equal annual instalments, including principal and interest: At what price shall it be sold to yield the purchaser 4% interest?

Find the page in the table headed *17 years*, and then the column headed 5% (the rate of interest which the bond bears); follow the column down until opposite 4 (the rate of interest it is desired the bond shall yield the purchaser) in the column at the side. The result is 107.91, *i.e.* the bond must be sold at \$1079.10, and accrued interest (if any), to yield the purchaser 4% interest.





## 1 YEAR Interest Payable Yearly

| Per Ct<br>Per An                | 2½%    | 3%     | 3½%    | 4%     | 4½%    | 5%     | Per Ct<br>Per An                |
|---------------------------------|--------|--------|--------|--------|--------|--------|---------------------------------|
| 2½                              | 100.00 | 100.49 | 100.98 | 101.46 | 101.95 | 102.44 | 2½                              |
| 2½ <sup>1</sup> / <sub>8</sub>  | 99.88  | 100.37 | 100.85 | 101.34 | 101.83 | 102.31 | 2½ <sup>1</sup> / <sub>8</sub>  |
| 2½ <sup>2</sup> / <sub>8</sub>  | 99.76  | 100.24 | 100.73 | 101.22 | 101.70 | 102.19 | 2½ <sup>2</sup> / <sub>8</sub>  |
| 2½ <sup>3</sup> / <sub>8</sub>  | 99.64  | 100.12 | 100.61 | 101.09 | 101.58 | 102.07 | 2½ <sup>3</sup> / <sub>8</sub>  |
| 2½ <sup>4</sup> / <sub>8</sub>  | 99.51  | 100.00 | 100.49 | 100.97 | 101.46 | 101.94 | 2½ <sup>4</sup> / <sub>8</sub>  |
| 2½ <sup>5</sup> / <sub>8</sub>  | 99.39  | 99.88  | 100.36 | 100.85 | 101.33 | 101.82 | 2½ <sup>5</sup> / <sub>8</sub>  |
| 2½ <sup>6</sup> / <sub>8</sub>  | 99.27  | 99.76  | 100.24 | 100.73 | 101.21 | 101.69 | 2½ <sup>6</sup> / <sub>8</sub>  |
| 2½ <sup>7</sup> / <sub>8</sub>  | 99.15  | 99.64  | 100.12 | 100.60 | 101.09 | 101.57 | 2½ <sup>7</sup> / <sub>8</sub>  |
| 2½ <sup>8</sup> / <sub>8</sub>  | 99.03  | 99.52  | 100.00 | 100.48 | 100.97 | 101.45 | 2½ <sup>8</sup> / <sub>8</sub>  |
| 2½ <sup>9</sup> / <sub>8</sub>  | 98.91  | 99.40  | 99.88  | 100.36 | 100.84 | 101.33 | 2½ <sup>9</sup> / <sub>8</sub>  |
| 2½ <sup>10</sup> / <sub>8</sub> | 98.79  | 99.28  | 99.76  | 100.24 | 100.72 | 101.21 | 2½ <sup>10</sup> / <sub>8</sub> |
| 2½ <sup>11</sup> / <sub>8</sub> | 98.68  | 99.16  | 99.64  | 100.12 | 100.60 | 101.09 | 2½ <sup>11</sup> / <sub>8</sub> |
| 2½ <sup>12</sup> / <sub>8</sub> | 98.56  | 99.04  | 99.52  | 100.00 | 100.48 | 100.96 | 2½ <sup>12</sup> / <sub>8</sub> |
| 2½ <sup>13</sup> / <sub>8</sub> | 98.44  | 98.92  | 99.40  | 99.88  | 100.36 | 100.84 | 2½ <sup>13</sup> / <sub>8</sub> |
| 2½ <sup>14</sup> / <sub>8</sub> | 98.32  | 98.80  | 99.28  | 99.76  | 100.24 | 100.72 | 2½ <sup>14</sup> / <sub>8</sub> |
| 2½ <sup>15</sup> / <sub>8</sub> | 98.20  | 98.68  | 99.16  | 99.64  | 100.12 | 100.60 | 2½ <sup>15</sup> / <sub>8</sub> |
| 2½ <sup>16</sup> / <sub>8</sub> | 98.09  | 98.57  | 99.04  | 99.52  | 100.00 | 100.48 | 2½ <sup>16</sup> / <sub>8</sub> |
| 2½ <sup>17</sup> / <sub>8</sub> | 97.97  | 98.45  | 98.92  | 99.40  | 99.88  | 100.36 | 2½ <sup>17</sup> / <sub>8</sub> |
| 2½ <sup>18</sup> / <sub>8</sub> | 97.85  | 98.33  | 98.81  | 99.28  | 99.76  | 100.24 | 2½ <sup>18</sup> / <sub>8</sub> |
| 2½ <sup>19</sup> / <sub>8</sub> | 97.74  | 98.21  | 98.69  | 99.17  | 99.64  | 100.12 | 2½ <sup>19</sup> / <sub>8</sub> |
| 2½ <sup>20</sup> / <sub>8</sub> | 97.62  | 98.10  | 98.57  | 99.05  | 99.52  | 100.00 | 2½ <sup>20</sup> / <sub>8</sub> |

## 2 YEARS Interest Payable Yearly

| Per Ct<br>Per An                | 2½%    | 3%     | 3½%    | 4%     | 4½%    | 5%     | Per Ct<br>Per An                |
|---------------------------------|--------|--------|--------|--------|--------|--------|---------------------------------|
| 2½                              | 100.00 | 100.73 | 101.46 | 102.19 | 102.92 | 103.66 | 2½                              |
| 2½ <sup>1</sup> / <sub>8</sub>  | 99.82  | 100.54 | 101.26 | 101.91 | 102.64 | 103.37 | 2½ <sup>1</sup> / <sub>8</sub>  |
| 2½ <sup>2</sup> / <sub>8</sub>  | 99.64  | 100.36 | 101.06 | 101.72 | 102.46 | 103.18 | 2½ <sup>2</sup> / <sub>8</sub>  |
| 2½ <sup>3</sup> / <sub>8</sub>  | 99.46  | 100.18 | 100.91 | 101.64 | 102.36 | 103.09 | 2½ <sup>3</sup> / <sub>8</sub>  |
| 2½ <sup>4</sup> / <sub>8</sub>  | 99.28  | 100.00 | 100.73 | 101.45 | 102.18 | 102.91 | 2½ <sup>4</sup> / <sub>8</sub>  |
| 2½ <sup>5</sup> / <sub>8</sub>  | 99.10  | 99.82  | 100.54 | 101.27 | 101.99 | 102.72 | 2½ <sup>5</sup> / <sub>8</sub>  |
| 2½ <sup>6</sup> / <sub>8</sub>  | 98.92  | 99.64  | 100.36 | 101.09 | 101.81 | 102.54 | 2½ <sup>6</sup> / <sub>8</sub>  |
| 2½ <sup>7</sup> / <sub>8</sub>  | 98.74  | 99.46  | 100.18 | 100.90 | 101.63 | 102.35 | 2½ <sup>7</sup> / <sub>8</sub>  |
| 2½ <sup>8</sup> / <sub>8</sub>  | 98.56  | 99.28  | 100.00 | 100.72 | 101.44 | 102.17 | 2½ <sup>8</sup> / <sub>8</sub>  |
| 2½ <sup>9</sup> / <sub>8</sub>  | 98.38  | 99.10  | 99.82  | 100.54 | 101.26 | 101.98 | 2½ <sup>9</sup> / <sub>8</sub>  |
| 2½ <sup>10</sup> / <sub>8</sub> | 98.21  | 98.92  | 99.64  | 100.36 | 101.08 | 101.80 | 2½ <sup>10</sup> / <sub>8</sub> |
| 2½ <sup>11</sup> / <sub>8</sub> | 98.03  | 98.75  | 99.46  | 100.18 | 100.90 | 101.62 | 2½ <sup>11</sup> / <sub>8</sub> |
| 2½ <sup>12</sup> / <sub>8</sub> | 97.86  | 98.57  | 99.28  | 100.00 | 100.72 | 101.43 | 2½ <sup>12</sup> / <sub>8</sub> |
| 2½ <sup>13</sup> / <sub>8</sub> | 97.68  | 98.39  | 99.11  | 99.82  | 100.54 | 101.25 | 2½ <sup>13</sup> / <sub>8</sub> |
| 2½ <sup>14</sup> / <sub>8</sub> | 97.51  | 98.22  | 98.93  | 99.64  | 100.36 | 101.07 | 2½ <sup>14</sup> / <sub>8</sub> |
| 2½ <sup>15</sup> / <sub>8</sub> | 97.33  | 98.04  | 98.75  | 99.47  | 100.18 | 100.89 | 2½ <sup>15</sup> / <sub>8</sub> |
| 2½ <sup>16</sup> / <sub>8</sub> | 97.16  | 97.87  | 98.58  | 99.29  | 100.00 | 100.71 | 2½ <sup>16</sup> / <sub>8</sub> |
| 2½ <sup>17</sup> / <sub>8</sub> | 96.99  | 97.69  | 98.40  | 99.11  | 99.82  | 100.53 | 2½ <sup>17</sup> / <sub>8</sub> |
| 2½ <sup>18</sup> / <sub>8</sub> | 96.81  | 97.52  | 98.23  | 98.94  | 99.64  | 100.36 | 2½ <sup>18</sup> / <sub>8</sub> |
| 2½ <sup>19</sup> / <sub>8</sub> | 96.64  | 97.35  | 98.05  | 98.76  | 99.47  | 100.18 | 2½ <sup>19</sup> / <sub>8</sub> |
| 2½ <sup>20</sup> / <sub>8</sub> | 96.47  | 97.17  | 97.88  | 98.59  | 99.29  | 100.00 | 2½ <sup>20</sup> / <sub>8</sub> |

# 3 YEARS

## Interest Payable Yearly

| Per Ct<br>Per An | 2 1/2% | 3%     | 3 1/2% | 4%     | 4 1/2% | 5%     | Per Ct<br>Per An |
|------------------|--------|--------|--------|--------|--------|--------|------------------|
| 2 1/8            | 100.00 | 100.97 | 101.94 | 102.92 | 103.89 | 104.88 | 2 1/8            |
| 2 1/4            | 99.76  | 100.73 | 101.70 | 102.67 | 103.64 | 104.62 | 2 1/4            |
| 2 3/8            | 99.52  | 100.48 | 101.45 | 102.42 | 103.39 | 104.37 | 2 3/8            |
| 2 1/2            | 99.28  | 100.24 | 101.21 | 102.17 | 103.15 | 104.12 | 2 1/2            |
| 2 7/8            | 99.04  | 100.00 | 100.95 | 101.93 | 102.90 | 103.87 | 2 7/8            |
| 3                | 98.80  | 99.76  | 100.72 | 101.68 | 102.65 | 103.62 | 3                |
| 3 1/8            | 98.57  | 99.52  | 100.48 | 101.44 | 102.40 | 103.37 | 3 1/8            |
| 3 1/4            | 98.33  | 99.28  | 100.24 | 101.20 | 102.16 | 103.12 | 3 1/4            |
| 3 3/8            | 98.10  | 99.05  | 100.00 | 100.96 | 101.92 | 102.88 | 3 3/8            |
| 3 1/2            | 97.86  | 98.81  | 99.76  | 100.72 | 101.67 | 102.63 | 3 1/2            |
| 3 3/4            | 97.63  | 98.58  | 99.52  | 100.48 | 101.43 | 102.39 | 3 3/4            |
| 3 7/8            | 97.40  | 98.34  | 99.28  | 100.24 | 101.19 | 102.14 | 3 7/8            |
| 4                | 97.17  | 98.11  | 99.05  | 100.00 | 100.95 | 101.90 | 4                |
| 4 1/8            | 96.94  | 97.88  | 98.82  | 99.76  | 100.71 | 101.66 | 4 1/8            |
| 4 1/4            | 96.71  | 97.64  | 98.58  | 99.53  | 100.47 | 101.42 | 4 1/4            |
| 4 3/8            | 96.48  | 97.41  | 98.35  | 99.29  | 100.24 | 101.18 | 4 3/8            |
| 4 1/2            | 96.25  | 97.18  | 98.12  | 99.06  | 100.00 | 100.94 | 4 1/2            |
| 4 3/4            | 96.03  | 96.96  | 97.89  | 98.82  | 99.76  | 100.71 | 4 3/4            |
| 4 7/8            | 95.80  | 96.73  | 97.66  | 98.59  | 99.53  | 100.47 | 4 7/8            |
| 4 1/2            | 95.57  | 96.50  | 97.43  | 98.36  | 99.30  | 100.23 | 4 1/2            |
| 5                | 95.35  | 96.28  | 97.20  | 98.13  | 99.06  | 100.00 | 5                |

# 4 YEARS

## Interest Payable Yearly

| Per Ct<br>Per An | 2 1/2% | 3%     | 3 1/2% | 4%     | 4 1/2% | 5%     | Per Ct<br>Per An |
|------------------|--------|--------|--------|--------|--------|--------|------------------|
| 2 1/8            | 100.00 | 101.21 | 102.42 | 103.64 | 104.86 | 106.09 | 2 1/8            |
| 2 1/4            | 99.70  | 100.90 | 102.11 | 102.33 | 104.55 | 105.77 | 2 1/4            |
| 2 3/8            | 99.40  | 100.60 | 101.81 | 102.02 | 104.25 | 105.46 | 2 3/8            |
| 2 1/2            | 99.10  | 100.30 | 101.50 | 102.71 | 103.92 | 105.14 | 2 1/2            |
| 2 7/8            | 98.81  | 100.00 | 101.20 | 102.40 | 103.61 | 104.83 | 2 7/8            |
| 3                | 98.51  | 99.70  | 100.90 | 102.10 | 103.30 | 104.51 | 3                |
| 3 1/8            | 98.22  | 99.40  | 100.60 | 101.79 | 103.00 | 104.20 | 3 1/8            |
| 3 1/4            | 97.93  | 99.11  | 100.30 | 101.49 | 102.69 | 103.89 | 3 1/4            |
| 3 3/8            | 97.64  | 98.82  | 100.00 | 101.19 | 102.38 | 103.59 | 3 3/8            |
| 3 1/2            | 97.35  | 98.52  | 99.70  | 100.89 | 102.08 | 103.28 | 3 1/2            |
| 3 3/4            | 97.06  | 98.23  | 99.41  | 100.59 | 101.78 | 102.97 | 3 3/4            |
| 3 7/8            | 96.77  | 97.94  | 99.12  | 100.30 | 101.48 | 102.67 | 3 7/8            |
| 4                | 96.49  | 97.65  | 98.82  | 100.00 | 101.18 | 102.37 | 4                |
| 4 1/8            | 96.21  | 97.37  | 98.53  | 99.71  | 100.88 | 102.07 | 4 1/8            |
| 4 1/4            | 95.92  | 97.08  | 98.24  | 99.41  | 100.59 | 101.77 | 4 1/4            |
| 4 3/8            | 95.64  | 96.80  | 97.96  | 99.12  | 100.29 | 101.47 | 4 3/8            |
| 4 1/2            | 95.36  | 96.51  | 97.67  | 98.83  | 100.00 | 101.17 | 4 1/2            |
| 4 3/4            | 95.08  | 96.23  | 97.39  | 98.54  | 99.71  | 100.88 | 4 3/4            |
| 4 7/8            | 94.81  | 95.95  | 97.10  | 98.26  | 99.42  | 100.58 | 4 7/8            |
| 4 1/2            | 94.53  | 95.67  | 96.82  | 97.97  | 99.13  | 100.29 | 4 1/2            |
| 5                | 94.26  | 95.40  | 96.54  | 97.69  | 98.84  | 100.00 | 5                |

## 5 YEARS Interest Payable Yearly

| Per Ct Per An | 2 1/2% | 3%     | 3 1/2% | 4%     | 4 1/2% | 5%     | Per Ct Per An |
|---------------|--------|--------|--------|--------|--------|--------|---------------|
| 2 1/2         | 100.00 | 101.44 | 102.90 | 104.38 | 105.83 | 107.31 | 2 1/2         |
| 2 3/4         | 99.64  | 101.08 | 102.53 | 103.98 | 105.45 | 106.93 | 2 3/4         |
| 3             | 99.28  | 100.72 | 102.16 | 103.61 | 105.07 | 106.54 | 3             |
| 3 1/4         | 98.93  | 100.36 | 101.80 | 103.24 | 104.70 | 106.16 | 3 1/4         |
| 3 1/2         | 98.58  | 100.00 | 101.43 | 102.87 | 104.32 | 105.78 | 3 1/2         |
| 3 3/4         | 98.23  | 99.64  | 101.07 | 102.51 | 103.95 | 105.40 | 3 3/4         |
| 4             | 97.88  | 99.29  | 100.71 | 102.14 | 103.58 | 105.03 | 4             |
| 4 1/4         | 97.53  | 98.94  | 100.36 | 101.78 | 103.21 | 104.66 | 4 1/4         |
| 4 1/2         | 97.19  | 98.59  | 100.00 | 101.42 | 102.85 | 104.29 | 4 1/2         |
| 4 3/4         | 96.84  | 98.24  | 99.65  | 101.06 | 102.49 | 103.92 | 4 3/4         |
| 5             | 96.50  | 97.89  | 99.30  | 100.70 | 102.12 | 103.56 | 5             |
| 5 1/4         | 96.16  | 97.55  | 98.95  | 100.35 | 101.77 | 103.19 | 5 1/4         |
| 5 1/2         | 95.82  | 97.21  | 98.60  | 100.00 | 101.41 | 102.83 | 5 1/2         |
| 5 3/4         | 95.49  | 96.87  | 98.25  | 99.65  | 101.05 | 102.47 | 5 3/4         |
| 6             | 95.15  | 96.53  | 97.91  | 99.30  | 100.70 | 102.11 | 6             |
| 6 1/4         | 94.82  | 96.19  | 97.57  | 98.96  | 100.35 | 101.75 | 6 1/4         |
| 6 1/2         | 94.49  | 95.84  | 97.23  | 98.61  | 100.00 | 101.40 | 6 1/2         |
| 6 3/4         | 94.16  | 95.50  | 96.89  | 98.27  | 99.65  | 101.05 | 6 3/4         |
| 7             | 93.84  | 95.16  | 96.56  | 97.93  | 99.31  | 100.70 | 7             |
| 7 1/4         | 93.51  | 94.82  | 96.22  | 97.59  | 98.96  | 100.35 | 7 1/4         |
| 7 1/2         | 93.19  | 94.48  | 95.88  | 97.25  | 98.62  | 100.00 | 7 1/2         |

## 6 YEARS AND Interest Payable Yearly

| Per Ct Per An | 2 1/2% | 3%     | 3 1/2% | 4%     | 4 1/2% | 5%     | Per Ct Per An |
|---------------|--------|--------|--------|--------|--------|--------|---------------|
| 2 1/2         | 100.00 | 101.68 | 103.37 | 105.07 | 106.79 | 108.52 | 2 1/2         |
| 2 3/4         | 99.80  | 101.50 | 103.19 | 104.89 | 106.63 | 108.37 | 2 3/4         |
| 3             | 99.61  | 101.32 | 103.01 | 104.71 | 106.48 | 108.22 | 3             |
| 3 1/4         | 99.43  | 101.14 | 102.83 | 104.53 | 106.33 | 108.07 | 3 1/4         |
| 3 1/2         | 99.25  | 100.96 | 102.65 | 104.35 | 106.18 | 107.92 | 3 1/2         |
| 3 3/4         | 99.07  | 100.78 | 102.47 | 104.17 | 106.03 | 107.77 | 3 3/4         |
| 4             | 98.89  | 100.60 | 102.29 | 103.99 | 105.88 | 107.62 | 4             |
| 4 1/4         | 98.71  | 100.42 | 102.11 | 103.81 | 105.73 | 107.47 | 4 1/4         |
| 4 1/2         | 98.53  | 100.24 | 101.93 | 103.63 | 105.58 | 107.32 | 4 1/2         |
| 4 3/4         | 98.35  | 100.06 | 101.75 | 103.45 | 105.43 | 107.17 | 4 3/4         |
| 5             | 98.17  | 99.88  | 101.57 | 103.27 | 105.28 | 107.02 | 5             |
| 5 1/4         | 97.99  | 99.70  | 101.39 | 103.09 | 105.13 | 106.87 | 5 1/4         |
| 5 1/2         | 97.81  | 99.52  | 101.21 | 102.91 | 104.98 | 106.72 | 5 1/2         |
| 5 3/4         | 97.63  | 99.34  | 101.03 | 102.73 | 104.83 | 106.57 | 5 3/4         |
| 6             | 97.45  | 99.16  | 100.85 | 102.55 | 104.68 | 106.42 | 6             |
| 6 1/4         | 97.27  | 98.98  | 100.67 | 102.37 | 104.53 | 106.27 | 6 1/4         |
| 6 1/2         | 97.09  | 98.80  | 100.49 | 102.19 | 104.38 | 106.12 | 6 1/2         |
| 6 3/4         | 96.91  | 98.62  | 100.31 | 102.01 | 104.23 | 105.97 | 6 3/4         |
| 7             | 96.73  | 98.44  | 100.13 | 101.83 | 104.08 | 105.82 | 7             |
| 7 1/4         | 96.55  | 98.26  | 99.95  | 101.65 | 103.93 | 105.67 | 7 1/4         |
| 7 1/2         | 96.37  | 98.08  | 99.77  | 101.47 | 103.78 | 105.52 | 7 1/2         |
| 7 3/4         | 96.19  | 97.90  | 99.59  | 101.29 | 103.63 | 105.37 | 7 3/4         |
| 8             | 96.01  | 97.72  | 99.41  | 101.11 | 103.48 | 105.22 | 8             |
| 8 1/4         | 95.83  | 97.54  | 99.23  | 100.93 | 103.33 | 105.07 | 8 1/4         |
| 8 1/2         | 95.65  | 97.36  | 99.05  | 100.75 | 103.18 | 104.92 | 8 1/2         |
| 8 3/4         | 95.47  | 97.18  | 98.87  | 100.57 | 103.03 | 104.77 | 8 3/4         |
| 9             | 95.29  | 97.00  | 98.69  | 100.39 | 102.88 | 104.62 | 9             |
| 9 1/4         | 95.11  | 96.82  | 98.51  | 100.21 | 102.73 | 104.47 | 9 1/4         |
| 9 1/2         | 94.93  | 96.64  | 98.33  | 100.03 | 102.58 | 104.32 | 9 1/2         |
| 9 3/4         | 94.75  | 96.46  | 98.15  | 99.85  | 102.43 | 104.17 | 9 3/4         |
| 10            | 94.57  | 96.28  | 97.97  | 99.67  | 102.28 | 104.02 | 10            |
| 10 1/4        | 94.39  | 96.10  | 97.79  | 99.49  | 102.13 | 103.87 | 10 1/4        |
| 10 1/2        | 94.21  | 95.92  | 97.61  | 99.31  | 101.98 | 103.72 | 10 1/2        |
| 10 3/4        | 94.03  | 95.74  | 97.43  | 99.13  | 101.83 | 103.57 | 10 3/4        |
| 11            | 93.85  | 95.56  | 97.25  | 98.95  | 101.68 | 103.42 | 11            |
| 11 1/4        | 93.67  | 95.38  | 97.07  | 98.77  | 101.53 | 103.27 | 11 1/4        |
| 11 1/2        | 93.49  | 95.20  | 96.89  | 98.59  | 101.38 | 103.12 | 11 1/2        |
| 11 3/4        | 93.31  | 95.02  | 96.71  | 98.41  | 101.23 | 102.97 | 11 3/4        |
| 12            | 93.13  | 94.84  | 96.53  | 98.23  | 101.08 | 102.82 | 12            |
| 12 1/4        | 92.95  | 94.66  | 96.35  | 98.05  | 100.93 | 102.67 | 12 1/4        |
| 12 1/2        | 92.77  | 94.48  | 96.17  | 97.87  | 100.78 | 102.52 | 12 1/2        |
| 12 3/4        | 92.59  | 94.30  | 95.99  | 97.69  | 100.63 | 102.37 | 12 3/4        |
| 13            | 92.41  | 94.12  | 95.81  | 97.51  | 100.48 | 102.22 | 13            |
| 13 1/4        | 92.23  | 93.94  | 95.63  | 97.33  | 100.33 | 102.07 | 13 1/4        |
| 13 1/2        | 92.05  | 93.76  | 95.45  | 97.15  | 100.18 | 101.92 | 13 1/2        |
| 13 3/4        | 91.87  | 93.58  | 95.27  | 96.97  | 100.03 | 101.77 | 13 3/4        |
| 14            | 91.69  | 93.40  | 95.09  | 96.79  | 99.88  | 101.62 | 14            |
| 14 1/4        | 91.51  | 93.22  | 94.91  | 96.61  | 99.73  | 101.47 | 14 1/4        |
| 14 1/2        | 91.33  | 93.04  | 94.73  | 96.43  | 99.58  | 101.32 | 14 1/2        |
| 14 3/4        | 91.15  | 92.86  | 94.55  | 96.25  | 99.43  | 101.17 | 14 3/4        |
| 15            | 90.97  | 92.68  | 94.37  | 96.07  | 99.28  | 101.02 | 15            |

# 7 YEARS

Interest Payable Yearly

| Per Ct<br>Per An | 2½%    | 3%     | 3½%    | 4%     | 4½%    | 5%     | Per Ct<br>Per An |
|------------------|--------|--------|--------|--------|--------|--------|------------------|
| 2½%              | 100.00 | 101.91 | 103.84 | 105.79 | 107.75 | 109.73 | 2½%              |
| 2¾%              | 99.53  | 101.43 | 103.35 | 105.29 | 107.24 | 109.21 | 2¾%              |
| 3%               | 99.08  | 100.95 | 102.86 | 104.79 | 106.74 | 108.69 | 3%               |
| 3¼%              | 98.59  | 100.47 | 102.37 | 104.29 | 106.23 | 108.18 | 3¼%              |
| 3½%              | 98.12  | 100.00 | 101.89 | 103.80 | 105.73 | 107.67 | 3½%              |
| 3¾%              | 97.66  | 99.53  | 101.41 | 103.32 | 105.23 | 107.17 | 3¾%              |
| 4%               | 97.21  | 99.08  | 100.94 | 102.83 | 104.74 | 106.68 | 4%               |
| 4¼%              | 96.75  | 98.60  | 100.47 | 102.35 | 104.25 | 106.17 | 4¼%              |
| 4½%              | 96.30  | 98.14  | 100.00 | 101.87 | 103.76 | 105.67 | 4½%              |
| 4¾%              | 95.85  | 97.69  | 99.53  | 101.40 | 103.28 | 105.17 | 4¾%              |
| 5%               | 95.41  | 97.25  | 99.07  | 100.94 | 102.80 | 104.68 | 5%               |
| 5¼%              | 94.97  | 96.78  | 98.62  | 100.46 | 102.33 | 104.21 | 5¼%              |
| 5½%              | 94.53  | 96.34  | 98.18  | 100.00 | 101.86 | 103.73 | 5½%              |
| 5¾%              | 94.09  | 95.89  | 97.71  | 99.54  | 101.39 | 103.25 | 5¾%              |
| 6%               | 93.66  | 95.45  | 97.26  | 99.08  | 100.92 | 102.78 | 6%               |
| 6¼%              | 93.23  | 95.02  | 96.81  | 98.63  | 100.46 | 102.31 | 6¼%              |
| 6½%              | 92.81  | 94.58  | 96.37  | 98.18  | 100.00 | 101.84 | 6½%              |
| 6¾%              | 92.38  | 94.15  | 95.92  | 97.73  | 99.54  | 101.37 | 6¾%              |
| 7%               | 91.96  | 93.72  | 95.50  | 97.29  | 99.09  | 100.91 | 7%               |
| 7¼%              | 91.55  | 93.30  | 95.06  | 96.84  | 98.64  | 100.45 | 7¼%              |
| 7½%              | 91.13  | 92.87  | 94.63  | 96.41  | 98.20  | 100.00 | 7½%              |

# 8 YEARS

Interest Payable Yearly

| Per Ct<br>Per An | 2½%    | 3%     | 3½%    | 4%     | 4½%    | 5%     | Per Ct<br>Per An |
|------------------|--------|--------|--------|--------|--------|--------|------------------|
| 2½%              | 100.00 | 102.14 | 104.31 | 106.50 | 108.71 | 110.94 | 2½%              |
| 2¾%              | 99.57  | 101.69 | 103.86 | 106.03 | 108.23 | 110.45 | 2¾%              |
| 3%               | 99.14  | 101.26 | 103.41 | 105.57 | 107.76 | 109.96 | 3%               |
| 3¼%              | 98.72  | 100.83 | 102.96 | 105.11 | 107.30 | 109.48 | 3¼%              |
| 3½%              | 98.30  | 100.40 | 102.52 | 104.65 | 106.83 | 109.01 | 3½%              |
| 3¾%              | 97.89  | 99.97  | 102.08 | 104.20 | 106.37 | 108.54 | 3¾%              |
| 4%               | 97.48  | 99.54  | 101.64 | 103.74 | 105.91 | 108.07 | 4%               |
| 4¼%              | 97.07  | 99.11  | 101.20 | 103.29 | 105.45 | 107.61 | 4¼%              |
| 4½%              | 96.66  | 98.68  | 100.76 | 102.83 | 105.00 | 107.14 | 4½%              |
| 4¾%              | 96.25  | 98.25  | 100.32 | 102.38 | 104.54 | 106.68 | 4¾%              |
| 5%               | 95.84  | 97.82  | 99.88  | 101.92 | 104.08 | 106.22 | 5%               |
| 5¼%              | 95.43  | 97.39  | 99.44  | 101.47 | 103.62 | 105.76 | 5¼%              |
| 5½%              | 95.02  | 96.96  | 99.00  | 101.01 | 103.16 | 105.30 | 5½%              |
| 5¾%              | 94.61  | 96.53  | 98.56  | 100.56 | 102.70 | 104.84 | 5¾%              |
| 6%               | 94.20  | 96.10  | 98.12  | 100.10 | 102.24 | 104.38 | 6%               |
| 6¼%              | 93.79  | 95.67  | 97.68  | 99.64  | 101.78 | 103.92 | 6¼%              |
| 6½%              | 93.38  | 95.24  | 97.24  | 99.19  | 101.32 | 103.46 | 6½%              |
| 6¾%              | 92.97  | 94.81  | 96.79  | 98.73  | 100.86 | 103.00 | 6¾%              |
| 7%               | 92.56  | 94.38  | 96.35  | 98.28  | 100.40 | 102.54 | 7%               |
| 7¼%              | 92.15  | 93.95  | 95.90  | 97.82  | 99.94  | 102.08 | 7¼%              |
| 7½%              | 91.74  | 93.52  | 95.46  | 97.37  | 99.48  | 101.62 | 7½%              |
| 7¾%              | 91.33  | 93.09  | 95.01  | 96.91  | 99.02  | 101.16 | 7¾%              |
| 8%               | 90.92  | 92.66  | 94.57  | 96.45  | 98.56  | 100.70 | 8%               |
| 8¼%              | 90.51  | 92.23  | 94.12  | 96.00  | 98.10  | 100.24 | 8¼%              |
| 8½%              | 90.10  | 91.80  | 93.68  | 95.54  | 97.64  | 99.78  | 8½%              |
| 8¾%              | 89.69  | 91.37  | 93.23  | 95.08  | 97.18  | 99.32  | 8¾%              |
| 9%               | 89.28  | 90.94  | 92.79  | 94.63  | 96.72  | 98.86  | 9%               |

## 9 YEARS

### Interest Payable Yearly

| Per Ct Per An | 2 1/2% | 3%     | 3 1/2% | 4%     | 4 1/2% | 5%     | Per Ct Per An |
|---------------|--------|--------|--------|--------|--------|--------|---------------|
| 2 1/2%        | 100.00 | 102.87 | 104.77 | 107.20 | 100.06 | 112.14 | 2 1/2%        |
| 2 3/4%        | 99.41  | 101.77 | 104.16 | 106.57 | 109.01 | 111.48 | 2 3/4%        |
| 3%            | 98.83  | 101.18 | 103.55 | 105.95 | 106.38 | 110.83 | 3%            |
| 3 1/8%        | 98.25  | 100.59 | 102.94 | 105.33 | 107.74 | 110.18 | 3 1/8%        |
| 3 1/4%        | 97.68  | 100.00 | 102.33 | 104.72 | 107.12 | 109.54 | 3 1/4%        |
| 3 1/2%        | 97.12  | 99.42  | 101.75 | 104.11 | 106.50 | 108.91 | 3 1/2%        |
| 3 3/4%        | 96.55  | 98.84  | 101.16 | 103.51 | 105.88 | 108.28 | 3 3/4%        |
| 4%            | 96.00  | 98.27  | 100.58 | 102.91 | 105.27 | 107.65 | 4%            |
| 4 1/8%        | 95.44  | 97.71  | 100.00 | 102.32 | 104.66 | 107.03 | 4 1/8%        |
| 4 1/4%        | 94.89  | 97.15  | 99.42  | 101.72 | 104.06 | 106.42 | 4 1/4%        |
| 4 1/2%        | 94.36  | 96.59  | 98.83  | 101.12 | 103.47 | 105.81 | 4 1/2%        |
| 4 3/4%        | 93.81  | 96.02  | 98.25  | 100.57 | 102.88 | 105.21 | 4 3/4%        |
| 5%            | 93.28  | 95.46  | 97.73  | 100.00 | 102.29 | 104.61 | 5%            |
| 5 1/8%        | 92.75  | 94.95  | 97.18  | 99.43  | 101.71 | 104.01 | 5 1/8%        |
| 5 1/4%        | 92.23  | 94.42  | 96.63  | 98.87  | 101.14 | 103.43 | 5 1/4%        |
| 5 1/2%        | 91.71  | 93.88  | 96.09  | 98.31  | 100.57 | 102.84 | 5 1/2%        |
| 5 3/4%        | 91.19  | 93.36  | 95.55  | 97.76  | 100.00 | 102.26 | 5 3/4%        |
| 6%            | 90.68  | 92.83  | 95.00  | 97.20  | 99.44  | 101.69 | 6%            |
| 6 1/8%        | 90.17  | 92.31  | 94.48  | 96.67  | 98.88  | 101.12 | 6 1/8%        |
| 6 1/4%        | 89.67  | 91.80  | 93.95  | 96.13  | 98.33  | 100.56 | 6 1/4%        |
| 6 1/2%        | 89.17  | 91.29  | 93.43  | 95.60  | 97.79  | 100.00 | 6 1/2%        |

## 10 YEARS

### Interest Payable Yearly

| Per Ct Per An | 2 1/2% | 3%     | 3 1/2% | 4%     | 4 1/2% | 5%     | Per Ct Per An |
|---------------|--------|--------|--------|--------|--------|--------|---------------|
| 2 1/2%        | 100.00 | 102.60 | 105.24 | 107.90 | 110.61 | 113.34 | 2 1/2%        |
| 2 3/4%        | 99.36  | 101.94 | 104.58 | 107.21 | 109.90 | 112.61 | 2 3/4%        |
| 3%            | 98.72  | 101.29 | 103.90 | 106.52 | 109.19 | 111.89 | 3%            |
| 3 1/8%        | 98.09  | 100.64 | 103.23 | 105.84 | 108.49 | 111.18 | 3 1/8%        |
| 3 1/4%        | 97.47  | 100.00 | 102.57 | 105.17 | 107.80 | 110.47 | 3 1/4%        |
| 3 1/2%        | 96.85  | 99.37  | 101.92 | 104.50 | 107.12 | 109.77 | 3 1/2%        |
| 3 3/4%        | 96.23  | 98.74  | 101.27 | 103.84 | 106.44 | 109.07 | 3 3/4%        |
| 4%            | 95.63  | 98.11  | 100.63 | 103.19 | 105.77 | 108.39 | 4%            |
| 4 1/8%        | 95.02  | 97.50  | 100.00 | 102.54 | 105.10 | 107.70 | 4 1/8%        |
| 4 1/4%        | 94.43  | 96.88  | 99.37  | 101.89 | 104.45 | 107.03 | 4 1/4%        |
| 4 1/2%        | 93.84  | 96.28  | 98.75  | 101.26 | 103.79 | 106.36 | 4 1/2%        |
| 4 3/4%        | 93.25  | 95.68  | 98.14  | 100.63 | 103.15 | 105.70 | 4 3/4%        |
| 5%            | 92.67  | 95.08  | 97.53  | 100.00 | 102.50 | 105.04 | 5%            |
| 5 1/8%        | 92.10  | 94.50  | 96.92  | 99.37  | 101.87 | 104.39 | 5 1/8%        |
| 5 1/4%        | 91.53  | 93.91  | 96.32  | 98.77  | 101.24 | 103.74 | 5 1/4%        |
| 5 1/2%        | 90.97  | 93.33  | 95.73  | 98.16  | 100.62 | 103.11 | 5 1/2%        |
| 5 3/4%        | 90.41  | 92.76  | 95.14  | 97.56  | 100.00 | 102.47 | 5 3/4%        |
| 6%            | 89.86  | 92.19  | 94.56  | 96.96  | 99.39  | 101.85 | 6%            |
| 6 1/8%        | 89.31  | 91.63  | 93.98  | 96.37  | 98.78  | 101.23 | 6 1/8%        |
| 6 1/4%        | 88.77  | 91.07  | 93.41  | 95.78  | 98.18  | 100.61 | 6 1/4%        |
| 6 1/2%        | 88.23  | 90.52  | 92.85  | 95.20  | 97.59  | 100.00 | 6 1/2%        |

# 11 YEARS

## Interest Payable Yearly

| Per Ct<br>Per An | 2 1/2% | 3%     | 3 1/2% | 4%     | 4 1/2% | 5%     | Per Ct<br>Per An |
|------------------|--------|--------|--------|--------|--------|--------|------------------|
| 2 1/2            | 100.00 | 102.83 | 105.70 | 108.60 | 111.55 | 114.54 | 2 1/2            |
| 2 5/8            | 99.30  | 102.11 | 104.96 | 107.85 | 110.77 | 113.74 | 2 5/8            |
| 2 3/4            | 98.61  | 101.40 | 104.23 | 107.10 | 110.00 | 112.95 | 2 3/4            |
| 2 7/8            | 97.93  | 100.70 | 103.50 | 106.35 | 109.24 | 112.17 | 2 7/8            |
| 3                | 97.25  | 100.00 | 102.79 | 105.62 | 108.49 | 111.39 | 3                |
| 3 1/8            | 96.58  | 99.31  | 102.08 | 104.89 | 107.74 | 110.62 | 3 1/8            |
| 3 1/4            | 95.92  | 98.63  | 101.38 | 104.17 | 107.00 | 109.86 | 3 1/4            |
| 3 1/2            | 95.26  | 97.95  | 100.69 | 103.46 | 106.27 | 109.11 | 3 1/2            |
| 3 3/4            | 94.61  | 97.29  | 100.00 | 102.75 | 105.54 | 108.37 | 3 3/4            |
| 3 5/8            | 93.97  | 96.63  | 99.32  | 102.05 | 104.82 | 107.63 | 3 5/8            |
| 3 3/4            | 93.33  | 95.97  | 98.65  | 101.36 | 104.11 | 106.90 | 3 3/4            |
| 3 5/8            | 92.70  | 95.32  | 97.98  | 100.68 | 103.41 | 106.18 | 3 5/8            |
| 4                | 92.08  | 94.68  | 97.32  | 100.00 | 102.71 | 105.47 | 4                |
| 4 1/8            | 91.46  | 94.05  | 96.67  | 99.33  | 102.03 | 104.76 | 4 1/8            |
| 4 1/4            | 90.85  | 93.42  | 96.02  | 98.67  | 101.34 | 104.06 | 4 1/4            |
| 4 1/2            | 90.24  | 92.79  | 95.38  | 98.01  | 100.67 | 103.37 | 4 1/2            |
| 4 3/4            | 89.64  | 92.18  | 94.75  | 97.36  | 100.00 | 102.68 | 4 3/4            |
| 4 5/8            | 89.05  | 91.57  | 94.12  | 96.71  | 99.34  | 102.00 | 4 5/8            |
| 4 3/4            | 88.46  | 90.96  | 93.50  | 96.07  | 98.68  | 101.33 | 4 3/4            |
| 4 5/8            | 87.88  | 90.37  | 92.89  | 95.44  | 98.03  | 100.66 | 4 5/8            |
| 5                | 87.31  | 89.77  | 92.28  | 94.82  | 97.39  | 100.00 | 5                |

# 12 YEARS

## Interest Payable Yearly

| Per Ct<br>Per An | 2 1/2% | 3%     | 3 1/2% | 4%     | 4 1/2% | 5%     | Per Ct<br>Per An |
|------------------|--------|--------|--------|--------|--------|--------|------------------|
| 2 1/2            | 100.00 | 103.05 | 106.15 | 109.30 | 112.49 | 115.73 | 2 1/2            |
| 2 5/8            | 99.25  | 102.28 | 105.38 | 108.48 | 111.68 | 114.86 | 2 5/8            |
| 2 3/4            | 98.50  | 101.51 | 104.58 | 107.68 | 110.81 | 114.00 | 2 3/4            |
| 2 7/8            | 97.77  | 100.75 | 103.78 | 106.86 | 109.98 | 113.15 | 2 7/8            |
| 3                | 97.04  | 100.00 | 103.01 | 106.08 | 109.16 | 112.31 | 3                |
| 3 1/8            | 96.32  | 99.26  | 102.24 | 105.28 | 108.35 | 111.47 | 3 1/8            |
| 3 1/4            | 95.61  | 98.52  | 101.49 | 104.50 | 107.55 | 110.65 | 3 1/4            |
| 3 1/2            | 94.90  | 97.79  | 100.70 | 103.71 | 106.76 | 109.83 | 3 1/2            |
| 3 3/4            | 94.21  | 97.08  | 100.00 | 102.97 | 105.97 | 109.03 | 3 3/4            |
| 3 5/8            | 93.52  | 96.37  | 99.27  | 102.21 | 105.20 | 108.23 | 3 5/8            |
| 3 3/4            | 92.83  | 95.67  | 98.54  | 101.47 | 104.43 | 107.44 | 3 3/4            |
| 3 5/8            | 92.16  | 94.97  | 97.83  | 100.73 | 103.67 | 106.66 | 3 5/8            |
| 4                | 91.49  | 94.28  | 97.12  | 100.00 | 102.92 | 105.89 | 4                |
| 4 1/8            | 90.83  | 93.60  | 96.41  | 99.28  | 102.18 | 105.12 | 4 1/8            |
| 4 1/4            | 90.18  | 92.93  | 95.73  | 98.56  | 101.45 | 104.37 | 4 1/4            |
| 4 1/2            | 89.53  | 92.27  | 95.04  | 97.86  | 100.72 | 103.62 | 4 1/2            |
| 4 3/4            | 88.89  | 91.61  | 94.36  | 97.16  | 100.00 | 102.88 | 4 3/4            |
| 4 5/8            | 88.26  | 90.96  | 93.69  | 96.47  | 99.29  | 102.15 | 4 5/8            |
| 4 3/4            | 87.64  | 90.31  | 93.03  | 95.79  | 98.59  | 101.43 | 4 3/4            |
| 4 5/8            | 87.02  | 89.67  | 92.37  | 95.11  | 97.89  | 100.71 | 4 5/8            |
| 5                | 86.41  | 89.04  | 91.72  | 94.44  | 97.20  | 100.00 | 5                |

## 13 YEARS Interest Payable Yearly

| Per Ct<br>Per An | 2 1/2% | 3%     | 3 1/2% | 4%     | 4 1/2% | 5%     | Per Ct<br>Per An |
|------------------|--------|--------|--------|--------|--------|--------|------------------|
| 2 1/3            | 100.00 | 103.27 | 106.00 | 109.99 | 113.43 | 116.92 | 2 1/3            |
| 2 5/8            | 99.19  | 102.44 | 105.74 | 109.10 | 112.51 | 115.98 | 2 5/8            |
| 2 3/4            | 98.40  | 101.62 | 104.89 | 108.23 | 111.61 | 115.05 | 2 3/4            |
| 2 7/8            | 97.61  | 100.80 | 104.05 | 107.36 | 110.72 | 114.13 | 2 7/8            |
| 3                | 96.83  | 100.00 | 103.22 | 106.50 | 109.83 | 113.22 | 3                |
| 3 1/8            | 96.06  | 99.21  | 102.40 | 105.66 | 108.96 | 112.32 | 3 1/8            |
| 3 1/4            | 95.30  | 98.42  | 101.59 | 104.82 | 108.10 | 111.43 | 3 1/4            |
| 3 1/2            | 94.55  | 97.64  | 100.79 | 103.99 | 107.24 | 110.55 | 3 1/2            |
| 3 3/4            | 93.80  | 96.88  | 100.00 | 103.18 | 106.40 | 109.68 | 3 3/4            |
| 3 7/8            | 93.07  | 96.12  | 99.27  | 102.37 | 105.57 | 108.83 | 3 7/8            |
| 4                | 92.35  | 95.37  | 98.54  | 101.57 | 104.75 | 107.99 | 4                |
| 4 1/8            | 91.63  | 94.63  | 97.82  | 100.76 | 103.93 | 107.13 | 4 1/8            |
| 4 1/4            | 90.92  | 93.89  | 97.10  | 100.00 | 103.13 | 106.30 | 4 1/4            |
| 4 1/2            | 90.22  | 93.17  | 96.37  | 99.23  | 102.33 | 105.48 | 4 1/2            |
| 4 3/4            | 89.52  | 92.45  | 95.64  | 98.47  | 101.55 | 104.67 | 4 3/4            |
| 4 7/8            | 88.84  | 91.75  | 94.91  | 97.71  | 100.77 | 103.87 | 4 7/8            |
| 5                | 88.16  | 91.05  | 94.15  | 96.97  | 100.00 | 103.08 | 5                |
| 5 1/8            | 87.49  | 90.36  | 93.40  | 96.23  | 99.24  | 102.30 | 5 1/8            |
| 5 1/4            | 86.83  | 89.67  | 92.66  | 95.50  | 98.49  | 101.52 | 5 1/4            |
| 5 1/2            | 86.17  | 89.00  | 91.91  | 94.78  | 97.75  | 100.76 | 5 1/2            |
| 5 3/4            | 85.53  | 88.33  | 91.18  | 94.07  | 97.01  | 100.00 | 5 3/4            |

## 14 YEARS AND Interest Payable Yearly

| Per Ct<br>Per An | 2 1/2% | 3%     | 3 1/2% | 4%     | 4 1/2% | 5%     | Per Ct<br>Per An |
|------------------|--------|--------|--------|--------|--------|--------|------------------|
| 2 1/3            | 100.00 | 103.50 | 107.05 | 110.68 | 114.38 | 118.11 | 2 1/3            |
| 2 5/8            | 99.20  | 102.70 | 106.13 | 109.72 | 113.48 | 117.09 | 2 5/8            |
| 2 3/4            | 98.40  | 101.73 | 105.22 | 108.78 | 112.41 | 116.09 | 2 3/4            |
| 2 7/8            | 97.61  | 100.86 | 104.33 | 107.86 | 111.45 | 115.10 | 2 7/8            |
| 3                | 96.83  | 100.00 | 103.44 | 106.94 | 110.50 | 114.12 | 3                |
| 3 1/8            | 96.06  | 99.15  | 102.56 | 106.03 | 109.56 | 113.15 | 3 1/8            |
| 3 1/4            | 95.30  | 98.32  | 101.70 | 105.14 | 108.64 | 112.20 | 3 1/4            |
| 3 1/2            | 94.55  | 97.49  | 100.84 | 104.26 | 107.73 | 111.25 | 3 1/2            |
| 3 3/4            | 93.80  | 96.68  | 100.00 | 103.38 | 106.82 | 110.32 | 3 3/4            |
| 3 7/8            | 93.07  | 95.87  | 99.17  | 102.52 | 105.93 | 109.40 | 3 7/8            |
| 4                | 92.35  | 95.07  | 98.34  | 101.67 | 105.08 | 108.50 | 4                |
| 4 1/8            | 91.63  | 94.29  | 97.53  | 100.83 | 104.19 | 107.60 | 4 1/8            |
| 4 1/4            | 90.92  | 93.51  | 96.73  | 100.00 | 103.33 | 106.71 | 4 1/4            |
| 4 1/2            | 90.22  | 92.74  | 95.93  | 99.18  | 102.48 | 105.84 | 4 1/2            |
| 4 3/4            | 89.52  | 91.99  | 95.15  | 98.37  | 101.64 | 104.97 | 4 3/4            |
| 4 7/8            | 88.84  | 91.24  | 94.38  | 97.57  | 100.82 | 104.12 | 4 7/8            |
| 5                | 88.16  | 90.50  | 93.61  | 96.78  | 100.00 | 103.28 | 5                |
| 5 1/8            | 87.49  | 89.77  | 92.86  | 96.00  | 99.19  | 102.44 | 5 1/8            |
| 5 1/4            | 86.83  | 89.05  | 92.11  | 95.23  | 98.40  | 101.62 | 5 1/4            |
| 5 1/2            | 86.17  | 88.33  | 91.37  | 94.46  | 97.61  | 100.80 | 5 1/2            |
| 5 3/4            | 85.53  | 87.63  | 90.64  | 93.71  | 96.83  | 100.00 | 5 3/4            |



## 15 YEARS Interest Payable Yearly

| Per Ct Per An | 2 1/2% | 3%     | 3 1/2% | 4%     | 4 1/2% | 5%     | Per Ct Per An |
|---------------|--------|--------|--------|--------|--------|--------|---------------|
| 2 1/2         | 100.00 | 103.71 | 107.50 | 111.86 | 115.29 | 119.29 | 2 1/2         |
| 2 3/8         | 99.09  | 102.77 | 106.52 | 110.34 | 114.23 | 118.20 | 2 3/8         |
| 2 3/4         | 98.19  | 101.83 | 105.55 | 109.34 | 113.20 | 117.12 | 2 3/4         |
| 2 7/8         | 97.30  | 100.91 | 104.59 | 108.35 | 112.17 | 116.06 | 2 7/8         |
| 3             | 96.42  | 100.00 | 103.65 | 107.37 | 111.16 | 115.01 | 3             |
| 3 1/8         | 95.55  | 99.10  | 102.72 | 106.41 | 110.16 | 113.98 | 3 1/8         |
| 3 1/4         | 94.70  | 98.22  | 101.80 | 105.46 | 109.17 | 112.96 | 3 1/4         |
| 3 3/8         | 93.85  | 97.34  | 100.89 | 104.52 | 108.20 | 111.95 | 3 3/8         |
| 3 3/4         | 93.02  | 96.48  | 100.00 | 103.59 | 107.24 | 110.96 | 3 3/4         |
| 3 7/8         | 92.20  | 95.63  | 99.12  | 102.67 | 106.30 | 109.98 | 3 7/8         |
| 4             | 91.39  | 94.78  | 98.25  | 101.77 | 105.38 | 109.00 | 4             |
| 4 1/8         | 90.59  | 93.95  | 97.48  | 100.88 | 104.47 | 108.06 | 4 1/8         |
| 4 1/4         | 89.80  | 93.13  | 96.54  | 100.00 | 103.53 | 107.12 | 4 1/4         |
| 4 3/8         | 89.02  | 92.33  | 95.70  | 99.13  | 102.63 | 106.19 | 4 3/8         |
| 4 3/4         | 88.25  | 91.53  | 94.87  | 98.27  | 101.74 | 105.27 | 4 3/4         |
| 4 7/8         | 87.49  | 90.74  | 94.05  | 97.43  | 100.86 | 104.36 | 4 7/8         |
| 5             | 86.74  | 89.96  | 93.25  | 96.59  | 100.00 | 103.47 | 5             |
| 5 1/8         | 86.00  | 89.19  | 92.45  | 95.78  | 99.15  | 102.58 | 5 1/8         |
| 5 1/4         | 85.27  | 88.43  | 91.66  | 94.95  | 98.30  | 101.71 | 5 1/4         |
| 5 3/8         | 84.55  | 87.69  | 90.89  | 94.15  | 97.47  | 100.85 | 5 3/8         |
| 5 3/4         | 83.83  | 86.95  | 90.12  | 93.36  | 96.65  | 100.00 | 5 3/4         |

## 16 YEARS Interest Payable Yearly

| Per Ct Per An | 2 1/2% | 3%     | 3 1/2% | 4%     | 4 1/2% | 5%     | Per Ct Per An |
|---------------|--------|--------|--------|--------|--------|--------|---------------|
| 2 1/2         | 100.00 | 103.93 | 107.95 | 112.04 | 116.21 | 120.46 | 2 1/2         |
| 2 3/8         | 99.03  | 103.03 | 107.00 | 111.06 | 115.09 | 119.29 | 2 3/8         |
| 2 3/4         | 98.08  | 102.14 | 106.07 | 110.09 | 113.98 | 118.15 | 2 3/4         |
| 2 7/8         | 97.14  | 101.26 | 105.16 | 109.14 | 112.89 | 117.02 | 2 7/8         |
| 3             | 96.22  | 100.40 | 104.26 | 108.24 | 111.81 | 115.90 | 3             |
| 3 1/8         | 95.30  | 99.55  | 103.38 | 107.36 | 110.75 | 114.80 | 3 1/8         |
| 3 1/4         | 94.40  | 98.72  | 102.51 | 106.48 | 109.71 | 113.72 | 3 1/4         |
| 3 3/8         | 93.52  | 97.90  | 101.65 | 105.77 | 108.67 | 112.65 | 3 3/8         |
| 3 3/4         | 92.64  | 97.08  | 100.80 | 105.10 | 107.66 | 111.59 | 3 3/4         |
| 3 7/8         | 91.78  | 96.28  | 100.00 | 104.47 | 106.65 | 110.55 | 3 7/8         |
| 4             | 90.92  | 95.50  | 99.24  | 103.82 | 105.66 | 109.53 | 4             |
| 4 1/8         | 90.08  | 94.73  | 98.51  | 103.17 | 104.69 | 108.51 | 4 1/8         |
| 4 1/4         | 89.26  | 94.00  | 97.80  | 102.54 | 103.72 | 107.52 | 4 1/4         |
| 4 3/8         | 88.44  | 93.29  | 97.12  | 101.92 | 102.77 | 106.53 | 4 3/8         |
| 4 3/4         | 87.63  | 92.60  | 96.46  | 101.32 | 101.84 | 105.56 | 4 3/4         |
| 4 7/8         | 86.84  | 91.93  | 95.82  | 100.74 | 100.91 | 104.60 | 4 7/8         |
| 5             | 86.05  | 91.28  | 95.19  | 100.18 | 100.00 | 103.66 | 5             |
| 5 1/8         | 85.28  | 90.65  | 94.58  | 99.64  | 99.10  | 102.72 | 5 1/8         |
| 5 1/4         | 84.51  | 90.04  | 93.98  | 99.11  | 98.21  | 101.80 | 5 1/4         |
| 5 3/8         | 83.76  | 89.45  | 93.40  | 98.59  | 97.34  | 100.90 | 5 3/8         |
| 5 3/4         | 83.02  | 88.88  | 92.83  | 98.08  | 96.47  | 100.00 | 5 3/4         |

## 17 YEARS Interest Payable Yearly

| Per Ct<br>Per An | 2 1/2% | 3%     | 3 1/2% | 4%     | 4 1/2% | 5%     | Per Ct<br>Per An |
|------------------|--------|--------|--------|--------|--------|--------|------------------|
| 2 1/8            | 100.00 | 104.15 | 108.39 | 112.71 | 117.13 | 121.63 | 2 1/8            |
| 2 2/8            | 98.98  | 103.09 | 107.28 | 111.56 | 115.93 | 120.39 | 2 2/8            |
| 2 3/8            | 97.98  | 102.04 | 106.20 | 110.43 | 114.76 | 119.17 | 2 3/8            |
| 2 7/8            | 96.99  | 101.01 | 105.14 | 109.32 | 113.60 | 117.97 | 2 7/8            |
| 3                | 96.02  | 100.00 | 104.07 | 108.22 | 112.46 | 116.78 | 3                |
| 3 1/8            | 95.06  | 99.00  | 103.03 | 107.14 | 111.34 | 115.62 | 3 1/8            |
| 3 1/4            | 94.11  | 98.02  | 102.00 | 106.08 | 110.23 | 114.47 | 3 1/4            |
| 3 1/2            | 93.18  | 97.05  | 101.00 | 105.03 | 109.14 | 113.33 | 3 1/2            |
| 3 3/4            | 92.26  | 96.09  | 100.00 | 103.99 | 108.06 | 112.22 | 3 3/4            |
| 3 7/8            | 91.35  | 95.15  | 99.02  | 102.97 | 107.00 | 111.12 | 3 7/8            |
| 4                | 90.45  | 94.22  | 98.05  | 101.92 | 105.96 | 110.03 | 4                |
| 4 1/8            | 89.56  | 93.30  | 97.10  | 100.96 | 104.93 | 108.96 | 4 1/8            |
| 4 1/4            | 88.72  | 92.40  | 96.16  | 100.00 | 103.92 | 107.91 | 4 1/4            |
| 4 1/2            | 87.87  | 91.51  | 95.24  | 99.04  | 102.92 | 106.87 | 4 1/2            |
| 4 3/4            | 87.03  | 90.64  | 94.32  | 98.09  | 101.93 | 105.85 | 4 3/4            |
| 4 7/8            | 86.20  | 89.77  | 93.42  | 97.15  | 100.96 | 104.84 | 4 7/8            |
| 5                | 85.38  | 88.92  | 92.54  | 96.23  | 100.00 | 103.84 | 5                |
|                  | 84.57  | 88.08  | 91.66  | 95.32  | 99.06  | 102.86 |                  |
|                  | 83.78  | 87.25  | 90.80  | 94.43  | 98.12  | 101.89 |                  |
|                  | 82.99  | 86.43  | 89.95  | 93.54  | 97.21  | 100.94 |                  |
|                  | 82.22  | 85.63  | 89.11  | 92.67  | 96.30  | 100.00 |                  |

## 18 YEARS AND Interest Payable Yearly

| Per Ct<br>Per An | 2 1/2% | 3%     | 3 1/2% | 4%     | 4 1/2% | 5%     | Per Ct<br>Per An |
|------------------|--------|--------|--------|--------|--------|--------|------------------|
| 2 1/8            | 100.00 | 104.30 | 108.82 | 113.38 | 118.04 | 122.79 | 2 1/8            |
| 2 2/8            | 99.31  | 103.61 | 108.06 | 112.17 | 116.78 | 121.47 | 2 2/8            |
| 2 3/8            | 97.88  | 102.15 | 106.51 | 110.98 | 115.53 | 120.18 | 2 3/8            |
| 2 7/8            | 96.84  | 101.07 | 105.39 | 109.80 | 114.31 | 118.91 | 2 7/8            |
| 3                | 95.82  | 100.00 | 104.27 | 108.64 | 113.10 | 117.66 | 3                |
| 3 1/8            | 94.82  | 98.95  | 103.18 | 107.50 | 111.92 | 116.42 | 3 1/8            |
| 3 1/4            | 93.83  | 97.92  | 102.10 | 106.38 | 110.75 | 115.21 | 3 1/4            |
| 3 1/2            | 92.85  | 96.90  | 101.04 | 105.29 | 109.60 | 114.01 | 3 1/2            |
| 3 3/4            | 91.89  | 95.90  | 100.00 | 104.19 | 108.47 | 112.83 | 3 3/4            |
| 3 7/8            | 90.95  | 94.91  | 98.97  | 103.12 | 107.35 | 111.67 | 3 7/8            |
| 4                | 90.02  | 93.94  | 97.96  | 102.06 | 106.25 | 110.53 | 4                |
| 4 1/8            | 89.10  | 92.99  | 96.96  | 101.02 | 105.17 | 109.40 | 4 1/8            |
| 4 1/4            | 88.20  | 92.04  | 95.98  | 100.00 | 104.11 | 108.30 | 4 1/4            |
| 4 1/2            | 87.31  | 91.12  | 95.01  | 98.99  | 103.06 | 107.20 | 4 1/2            |
| 4 3/4            | 86.43  | 90.20  | 94.06  | 98.00  | 102.02 | 106.13 | 4 3/4            |
| 4 7/8            | 85.57  | 89.30  | 93.12  | 97.02  | 101.00 | 105.07 | 4 7/8            |
| 5                | 84.72  | 88.41  | 92.19  | 96.06  | 100.00 | 104.02 | 5                |
|                  | 83.88  | 87.54  | 91.28  | 95.11  | 99.01  | 103.00 |                  |
|                  | 83.06  | 86.68  | 90.38  | 94.17  | 98.04  | 101.98 |                  |
|                  | 82.24  | 85.83  | 89.50  | 93.25  | 97.08  | 100.98 |                  |
|                  | 81.44  | 84.99  | 88.63  | 92.34  | 96.13  | 100.00 |                  |

# 19 YEARS

## Interest Payable Yearly

| Per Ct<br>Per An | 2 1/2% | 3%     | 3 1/2% | 4%     | 4 1/2% | 5%     | Per Ct<br>Per An |
|------------------|--------|--------|--------|--------|--------|--------|------------------|
| 2 1/3            | 100.00 | 104.57 | 109.26 | 114.05 | 118.94 | 123.04 | 2 1/3            |
| 2 2/3            | 98.88  | 103.40 | 108.03 | 112.77 | 117.61 | 122.55 | 2 2/3            |
| 2 2/3            | 97.78  | 102.25 | 106.83 | 111.51 | 116.30 | 121.19 | 2 2/3            |
| 2 1/3            | 96.69  | 101.12 | 105.64 | 110.28 | 115.01 | 119.84 | 2 1/3            |
| 2                | 95.63  | 100.00 | 104.48 | 109.06 | 113.74 | 118.52 | 2                |
| 1 5/8            | 94.58  | 98.90  | 103.33 | 107.86 | 112.49 | 117.22 | 1 5/8            |
| 1 1/2            | 93.54  | 97.82  | 102.20 | 106.68 | 111.26 | 115.94 | 1 1/2            |
| 1 1/4            | 92.53  | 96.76  | 101.09 | 105.53 | 110.06 | 114.68 | 1 1/4            |
| 1 1/4            | 91.53  | 95.71  | 100.00 | 104.38 | 108.87 | 113.44 | 1 1/4            |
| 1 1/4            | 90.54  | 94.68  | 98.92  | 103.26 | 107.70 | 112.22 | 1 1/4            |
| 1 1/4            | 89.57  | 93.67  | 97.87  | 102.16 | 106.54 | 111.02 | 1 1/4            |
| 1 1/4            | 88.61  | 92.68  | 96.84  | 101.07 | 105.42 | 109.84 | 1 1/4            |
| 1 1/4            | 87.68  | 91.69  | 95.80  | 100.00 | 104.29 | 108.68 | 1 1/4            |
| 1 1/4            | 86.76  | 90.73  | 94.79  | 98.95  | 103.19 | 107.53 | 1 1/4            |
| 1 1/4            | 85.85  | 89.78  | 93.80  | 97.91  | 102.11 | 106.40 | 1 1/4            |
| 1 1/4            | 84.95  | 88.84  | 92.82  | 96.89  | 101.05 | 105.30 | 1 1/4            |
| 1 1/4            | 84.07  | 87.92  | 91.86  | 95.88  | 100.00 | 104.20 | 1 1/4            |
| 1 1/4            | 83.21  | 87.01  | 90.91  | 94.89  | 98.97  | 103.12 | 1 1/4            |
| 1 1/4            | 82.35  | 86.12  | 89.97  | 93.92  | 97.95  | 102.07 | 1 1/4            |
| 1 1/4            | 81.51  | 85.24  | 89.06  | 92.96  | 96.95  | 101.03 | 1 1/4            |
| 1 1/4            | 80.68  | 84.37  | 88.15  | 92.02  | 95.97  | 100.00 | 1 1/4            |

# 20 YEARS

## Interest Payable Yearly

| Per Ct<br>Per An | 2 1/2% | 3%     | 3 1/2% | 4%     | 4 1/2% | 5%     | Per Ct<br>Per An |
|------------------|--------|--------|--------|--------|--------|--------|------------------|
| 2 1/3            | 100.00 | 104.78 | 109.69 | 114.71 | 119.84 | 125.09 | 2 1/3            |
| 2 2/3            | 98.88  | 103.56 | 108.40 | 113.36 | 118.46 | 123.63 | 2 2/3            |
| 2 2/3            | 97.69  | 102.35 | 107.14 | 112.04 | 117.08 | 122.19 | 2 2/3            |
| 2 1/3            | 96.55  | 101.17 | 105.90 | 110.75 | 115.71 | 120.77 | 2 1/3            |
| 2                | 95.43  | 100.00 | 104.68 | 109.47 | 114.37 | 119.38 | 2                |
| 1 5/8            | 94.34  | 98.85  | 103.48 | 108.22 | 113.06 | 118.01 | 1 5/8            |
| 1 1/2            | 93.27  | 97.72  | 102.30 | 106.98 | 111.77 | 116.67 | 1 1/2            |
| 1 1/4            | 92.21  | 96.62  | 101.14 | 105.77 | 110.51 | 115.34 | 1 1/4            |
| 1 1/4            | 91.17  | 95.53  | 100.00 | 104.58 | 109.26 | 114.04 | 1 1/4            |
| 1 1/4            | 90.15  | 94.46  | 98.88  | 103.40 | 108.03 | 112.76 | 1 1/4            |
| 1 1/4            | 89.14  | 93.40  | 97.78  | 102.25 | 106.83 | 111.51 | 1 1/4            |
| 1 1/4            | 88.15  | 92.37  | 96.69  | 101.12 | 105.64 | 110.27 | 1 1/4            |
| 1 1/4            | 87.18  | 91.35  | 95.62  | 100.00 | 104.48 | 109.05 | 1 1/4            |
| 1 1/4            | 86.22  | 90.35  | 94.57  | 98.90  | 103.33 | 107.86 | 1 1/4            |
| 1 1/4            | 85.28  | 89.38  | 93.51  | 97.82  | 102.20 | 106.68 | 1 1/4            |
| 1 1/4            | 84.35  | 88.39  | 92.52  | 96.76  | 101.09 | 105.52 | 1 1/4            |
| 1 1/4            | 83.44  | 87.43  | 91.53  | 95.71  | 100.00 | 104.38 | 1 1/4            |
| 1 1/4            | 82.55  | 86.49  | 90.54  | 94.69  | 98.93  | 103.26 | 1 1/4            |
| 1 1/4            | 81.68  | 85.57  | 89.57  | 93.67  | 97.87  | 102.15 | 1 1/4            |
| 1 1/4            | 80.80  | 84.66  | 88.62  | 92.68  | 96.83  | 101.07 | 1 1/4            |
| 1 1/4            | 79.94  | 83.77  | 87.69  | 91.70  | 95.80  | 100.00 | 1 1/4            |

## 21 YEARS

### Interest Payable Yearly

| Per Ct<br>Per An | 2 1/2% | 3%     | 3 1/2% | 4%     | 4 1/2% | 5%     | Per Ct<br>Per An |
|------------------|--------|--------|--------|--------|--------|--------|------------------|
| 2 1/2            | 100.00 | 104.99 | 110.11 | 115.36 | 120.74 | 126.23 | 2 1/2            |
| 2 3/8            | 98.78  | 103.71 | 108.77 | 113.96 | 119.26 | 124.69 | 2 3/8            |
| 2 3/4            | 97.58  | 102.45 | 107.45 | 112.57 | 117.82 | 123.18 | 2 3/4            |
| 2 7/8            | 96.40  | 101.21 | 106.14 | 111.21 | 116.39 | 121.69 | 2 7/8            |
| 3                | 95.25  | 100.00 | 104.88 | 109.88 | 115.00 | 120.23 | 3                |
| 3 1/8            | 94.11  | 98.81  | 103.63 | 108.57 | 113.62 | 118.80 | 3 1/8            |
| 3 1/4            | 92.99  | 97.63  | 102.40 | 107.28 | 112.28 | 117.39 | 3 1/4            |
| 3 3/8            | 91.89  | 96.48  | 101.19 | 106.01 | 110.95 | 116.00 | 3 3/8            |
| 3 3/4            | 90.81  | 95.35  | 100.00 | 104.77 | 109.65 | 114.64 | 3 3/4            |
| 3 7/8            | 89.75  | 94.24  | 98.83  | 103.54 | 108.37 | 113.30 | 3 7/8            |
| 4                | 88.71  | 93.14  | 97.69  | 102.31 | 107.11 | 112.00 | 4                |
| 4 1/8            | 87.69  | 92.07  | 96.56  | 101.16 | 105.87 | 110.69 | 4 1/8            |
| 4 1/4            | 86.68  | 91.01  | 95.45  | 100.00 | 104.66 | 109.42 | 4 1/4            |
| 4 1/8            | 85.69  | 89.97  | 94.36  | 98.86  | 103.46 | 108.17 | 4 1/8            |
| 4 3/4            | 84.72  | 88.95  | 93.29  | 97.74  | 102.29 | 106.95 | 4 3/4            |
| 4 3/8            | 83.76  | 87.95  | 92.24  | 96.63  | 101.14 | 105.74 | 4 3/8            |
| 4 3/4            | 82.82  | 86.96  | 91.20  | 95.55  | 100.00 | 104.55 | 4 3/4            |
| 4 7/8            | 81.90  | 85.99  | 90.18  | 94.48  | 98.88  | 103.38 | 4 7/8            |
| 4 7/8            | 80.99  | 85.03  | 89.18  | 93.43  | 97.79  | 102.24 | 4 7/8            |
| 4 7/8            | 80.10  | 84.10  | 88.20  | 92.40  | 96.71  | 101.11 | 4 7/8            |
| 5                | 79.22  | 83.17  | 87.23  | 91.39  | 95.65  | 100.00 | 5                |

## 22 YEARS

### Interest Payable Yearly

| Per Ct<br>Per An | 2 1/2% | 3%     | 3 1/2% | 4%     | 4 1/2% | 5%     | Per Ct<br>Per An |
|------------------|--------|--------|--------|--------|--------|--------|------------------|
| 2 1/2            | 100.00 | 105.20 | 110.54 | 116.01 | 121.63 | 127.37 | 2 1/2            |
| 2 3/8            | 97.48  | 102.55 | 107.76 | 113.10 | 118.57 | 124.16 | 2 3/8            |
| 2 3/4            | 96.26  | 101.26 | 106.40 | 111.68 | 117.08 | 122.60 | 2 3/4            |
| 2 7/8            | 95.06  | 100.00 | 105.08 | 110.28 | 115.62 | 121.07 | 2 7/8            |
| 3                | 93.88  | 98.76  | 103.77 | 108.91 | 114.18 | 119.57 | 3                |
| 3 1/8            | 92.72  | 97.54  | 102.49 | 107.57 | 112.77 | 118.10 | 3 1/8            |
| 3 1/4            | 91.58  | 96.34  | 101.23 | 106.25 | 111.39 | 116.65 | 3 1/4            |
| 3 3/8            | 90.47  | 95.17  | 100.00 | 104.95 | 110.03 | 115.23 | 3 3/8            |
| 3 3/4            | 89.37  | 94.02  | 98.79  | 103.68 | 108.70 | 113.83 | 3 3/4            |
| 3 7/8            | 88.29  | 92.88  | 97.60  | 102.43 | 107.39 | 112.46 | 3 7/8            |
| 4                | 87.24  | 91.77  | 96.43  | 101.21 | 106.10 | 111.11 | 4                |
| 4 1/8            | 86.20  | 90.68  | 95.28  | 100.00 | 104.84 | 109.79 | 4 1/8            |
| 4 1/4            | 85.18  | 89.60  | 94.14  | 98.86  | 103.60 | 108.49 | 4 1/4            |
| 4 1/8            | 84.17  | 88.55  | 93.04  | 97.65  | 102.38 | 107.21 | 4 1/8            |
| 4 3/4            | 83.19  | 87.51  | 91.95  | 96.51  | 101.18 | 105.95 | 4 3/4            |
| 4 3/8            | 82.22  | 86.49  | 90.88  | 95.39  | 100.00 | 104.72 | 4 3/8            |
| 4 3/4            | 81.27  | 85.49  | 89.83  | 94.28  | 98.84  | 103.51 | 4 3/4            |
| 4 7/8            | 80.33  | 84.51  | 88.80  | 93.20  | 97.71  | 102.32 | 4 7/8            |
| 4 7/8            | 79.42  | 83.54  | 87.78  | 92.13  | 96.59  | 101.15 | 4 7/8            |
| 5                | 78.51  | 82.59  | 86.79  | 91.09  | 95.49  | 100.00 | 5                |

## 23 YEARS

### Interest Payable Yearly

| Per Ct<br>Per An | 2 1/2% | 3%     | 3 1/2% | 4%     | 4 1/2% | 5%     | Per Ct<br>Per An |
|------------------|--------|--------|--------|--------|--------|--------|------------------|
| 2 1/2            | 100.00 | 105.40 | 110.96 | 116.66 | 122.51 | 128.49 | 2 1/2            |
| 2 3/8            | 98.68  | 104.01 | 109.49 | 115.12 | 120.89 | 126.80 | 2 3/8            |
| 2 3/4            | 97.39  | 102.65 | 108.06 | 113.61 | 119.31 | 125.14 | 2 3/4            |
| 2 7/8            | 96.12  | 101.31 | 106.65 | 112.13 | 117.75 | 123.51 | 2 7/8            |
| 3                | 94.87  | 100.00 | 105.27 | 110.68 | 116.23 | 121.91 | 3                |
| 3 1/8            | 93.65  | 98.71  | 103.91 | 109.26 | 114.73 | 120.34 | 3 1/8            |
| 3 1/4            | 92.45  | 97.45  | 102.59 | 107.86 | 113.28 | 118.80 | 3 1/4            |
| 3 1/2            | 91.28  | 96.21  | 101.28 | 106.49 | 111.82 | 117.29 | 3 1/2            |
| 3 3/4            | 90.12  | 94.99  | 100.00 | 105.14 | 110.41 | 115.80 | 3 3/4            |
| 3 7/8            | 88.99  | 93.80  | 98.71  | 103.82 | 109.02 | 114.32 | 3 7/8            |
| 4                | 87.88  | 92.63  | 97.45  | 102.55 | 107.66 | 112.87 | 4                |
| 4 1/8            | 86.79  | 91.48  | 96.20  | 101.25 | 106.32 | 111.52 | 4 1/8            |
| 4 1/4            | 85.72  | 90.35  | 95.11  | 100.00 | 105.01 | 110.14 | 4 1/4            |
| 4 1/2            | 84.67  | 89.24  | 93.95  | 98.77  | 103.72 | 108.79 | 4 1/2            |
| 4 3/4            | 83.64  | 88.15  | 92.80  | 97.57  | 102.46 | 107.47 | 4 3/4            |
| 4 7/8            | 82.62  | 87.09  | 91.68  | 96.39  | 101.22 | 106.17 | 4 7/8            |
| 5                | 81.63  | 86.04  | 90.57  | 95.22  | 100.00 | 104.89 | 5                |
| 5 1/8            | 80.65  | 85.01  | 89.49  | 94.07  | 98.80  | 103.63 | 5 1/8            |
| 5 1/4            | 79.69  | 84.00  | 88.42  | 92.97  | 97.63  | 102.40 | 5 1/4            |
| 5 1/2            | 78.75  | 83.00  | 87.38  | 91.87  | 96.47  | 101.19 | 5 1/2            |
| 5 3/4            | 77.82  | 82.03  | 86.35  | 90.79  | 95.34  | 100.00 | 5 3/4            |

## 24 YEARS

### Interest Payable Yearly

| Per Ct<br>Per An | 2 1/2% | 3%     | 3 1/2% | 4%     | 4 1/2% | 5%     | Per Ct<br>Per An |
|------------------|--------|--------|--------|--------|--------|--------|------------------|
| 2 1/2            | 100.00 | 105.61 | 111.87 | 117.90 | 123.38 | 129.01 | 2 1/2            |
| 2 3/8            | 98.92  | 104.46 | 110.65 | 116.70 | 122.10 | 127.84 | 2 3/8            |
| 2 3/4            | 97.29  | 102.75 | 108.96 | 114.18 | 120.04 | 126.11 | 2 3/4            |
| 2 7/8            | 95.98  | 101.36 | 106.90 | 112.59 | 118.42 | 124.40 | 2 7/8            |
| 3                | 94.69  | 100.00 | 105.46 | 111.07 | 116.83 | 122.73 | 3                |
| 3 1/8            | 93.43  | 98.67  | 104.06 | 109.59 | 115.28 | 121.10 | 3 1/8            |
| 3 1/4            | 92.19  | 97.36  | 102.68 | 108.14 | 113.75 | 119.49 | 3 1/4            |
| 3 1/2            | 90.98  | 96.07  | 101.33 | 106.72 | 112.25 | 117.92 | 3 1/2            |
| 3 3/4            | 89.79  | 94.82  | 100.00 | 105.32 | 110.78 | 116.38 | 3 3/4            |
| 3 7/8            | 88.62  | 93.59  | 98.70  | 103.95 | 109.34 | 114.86 | 3 7/8            |
| 4                | 87.47  | 92.38  | 97.42  | 102.61 | 107.93 | 113.38 | 4                |
| 4 1/8            | 86.35  | 91.19  | 96.17  | 101.29 | 106.54 | 111.92 | 4 1/8            |
| 4 1/4            | 85.25  | 90.03  | 94.95  | 100.00 | 105.18 | 110.50 | 4 1/4            |
| 4 1/2            | 84.17  | 88.89  | 93.73  | 98.73  | 103.85 | 109.10 | 4 1/2            |
| 4 3/4            | 83.11  | 87.77  | 92.56  | 97.49  | 102.54 | 107.72 | 4 3/4            |
| 4 7/8            | 82.07  | 86.67  | 91.40  | 96.27  | 101.26 | 106.37 | 4 7/8            |
| 5                | 81.05  | 85.59  | 90.27  | 95.07  | 100.00 | 105.05 | 5                |
| 5 1/8            | 80.05  | 84.53  | 89.15  | 93.90  | 98.76  | 103.75 | 5 1/8            |
| 5 1/4            | 79.08  | 83.50  | 88.06  | 92.74  | 97.55  | 102.48 | 5 1/4            |
| 5 1/2            | 78.10  | 82.48  | 86.98  | 91.61  | 96.36  | 101.23 | 5 1/2            |
| 5 3/4            | 77.15  | 81.48  | 85.93  | 90.50  | 95.19  | 100.00 | 5 3/4            |

## 25 YEARS Interest Payable Yearly

| Per Ct<br>Per An | 2 1/2% | 3%     | 3 1/2% | 4%     | 4 1/2% | 5%     | Per Ct<br>Per An |
|------------------|--------|--------|--------|--------|--------|--------|------------------|
| 2 1/8            | 100.00 | 105.81 | 111.79 | 117.94 | 124.25 | 130.73 | 2 1/8            |
| 2 5/8            | 98.58  | 104.31 | 110.21 | 116.27 | 122.49 | 128.88 | 2 5/8            |
| 2 3/4            | 97.20  | 102.84 | 108.66 | 114.63 | 120.77 | 127.06 | 2 3/4            |
| 2 7/8            | 95.84  | 101.41 | 107.14 | 113.03 | 119.09 | 125.29 | 2 7/8            |
| 3                | 94.51  | 100.00 | 105.65 | 111.48 | 117.48 | 123.55 | 3                |
| 3 1/8            | 93.21  | 98.62  | 104.20 | 109.93 | 115.81 | 121.85 | 3 1/8            |
| 3 1/4            | 91.93  | 97.27  | 102.77 | 108.42 | 114.23 | 120.18 | 3 1/4            |
| 3 3/8            | 90.68  | 95.95  | 101.37 | 106.95 | 112.67 | 118.54 | 3 3/8            |
| 3 3/4            | 89.45  | 94.65  | 100.00 | 105.50 | 111.15 | 116.94 | 3 3/4            |
| 3 7/8            | 88.25  | 93.28  | 98.65  | 104.08 | 109.66 | 115.37 | 3 7/8            |
| 4                | 87.08  | 91.93  | 97.34  | 102.70 | 108.19 | 113.83 | 4                |
| 4 1/8            | 85.92  | 90.61  | 96.05  | 101.33 | 106.76 | 112.32 | 4 1/8            |
| 4 1/4            | 84.79  | 89.71  | 94.79  | 100.00 | 105.35 | 110.84 | 4 1/4            |
| 4 1/2            | 83.68  | 88.54  | 93.55  | 98.69  | 103.98 | 109.39 | 4 1/2            |
| 4 3/4            | 82.59  | 87.39  | 92.33  | 97.41  | 102.62 | 107.97 | 4 3/4            |
| 4 7/8            | 81.53  | 86.26  | 91.14  | 96.15  | 101.30 | 106.58 | 4 7/8            |
| 5                | 80.48  | 85.16  | 89.97  | 94.92  | 100.00 | 105.21 | 5                |
| 5 1/8            | 79.46  | 84.07  | 88.82  | 93.77  | 98.73  | 103.87 | 5 1/8            |
| 5 1/4            | 78.45  | 83.01  | 87.70  | 92.52  | 97.48  | 102.55 | 5 1/4            |
| 5 1/2            | 77.46  | 81.96  | 86.60  | 91.36  | 96.25  | 101.26 | 5 1/2            |
| 5 3/4            | 76.50  | 80.94  | 85.51  | 90.22  | 95.05  | 100.00 | 5 3/4            |
| 5 7/8            |        |        |        |        |        |        | 5 7/8            |
| 6                |        |        |        |        |        |        | 6                |

## 26 YEARS Interest Payable Yearly

| Per Ct<br>Per An | 2 1/2% | 3%     | 3 1/2% | 4%     | 4 1/2% | 5%     | Per Ct<br>Per An |
|------------------|--------|--------|--------|--------|--------|--------|------------------|
| 2 1/8            | 100.00 | 106.01 | 112.20 | 118.57 | 125.11 | 131.83 | 2 1/8            |
| 2 5/8            | 98.54  | 104.46 | 110.56 | 116.84 | 123.29 | 129.90 | 2 5/8            |
| 2 3/4            | 97.11  | 102.94 | 108.95 | 115.14 | 121.49 | 128.01 | 2 3/4            |
| 2 7/8            | 95.71  | 101.45 | 107.38 | 113.48 | 119.74 | 126.17 | 2 7/8            |
| 3                | 94.33  | 100.00 | 105.84 | 111.85 | 118.03 | 124.36 | 3                |
| 3 1/8            | 92.99  | 98.58  | 104.33 | 110.26 | 116.35 | 122.59 | 3 1/8            |
| 3 1/4            | 91.68  | 97.18  | 102.86 | 108.70 | 114.70 | 120.86 | 3 1/4            |
| 3 3/8            | 90.39  | 95.72  | 101.41 | 107.17 | 113.09 | 119.16 | 3 3/8            |
| 3 3/4            | 89.13  | 94.28  | 100.00 | 105.68 | 111.51 | 117.50 | 3 3/4            |
| 3 7/8            | 87.89  | 93.17  | 98.61  | 104.21 | 109.97 | 115.87 | 3 7/8            |
| 4                | 86.68  | 91.89  | 97.26  | 102.78 | 108.45 | 114.27 | 4                |
| 4 1/8            | 85.50  | 90.64  | 95.93  | 101.38 | 106.97 | 112.71 | 4 1/8            |
| 4 1/4            | 84.34  | 89.40  | 94.63  | 100.00 | 105.52 | 111.18 | 4 1/4            |
| 4 1/2            | 83.20  | 88.20  | 93.35  | 98.66  | 104.10 | 109.68 | 4 1/2            |
| 4 3/4            | 82.09  | 87.02  | 92.10  | 97.33  | 102.70 | 108.22 | 4 3/4            |
| 4 7/8            | 81.00  | 85.86  | 90.88  | 96.04  | 101.34 | 106.78 | 4 7/8            |
| 5                | 79.93  | 84.73  | 89.68  | 94.77  | 100.00 | 105.37 | 5                |
| 5 1/8            | 78.88  | 83.62  | 88.50  | 93.53  | 98.69  | 103.98 | 5 1/8            |
| 5 1/4            | 77.85  | 82.53  | 87.35  | 92.31  | 97.40  | 102.63 | 5 1/4            |
| 5 1/2            | 76.84  | 81.46  | 86.22  | 91.11  | 96.14  | 101.30 | 5 1/2            |
| 5 3/4            | 75.86  | 80.41  | 85.11  | 89.94  | 94.91  | 100.00 | 5 3/4            |
| 5 7/8            |        |        |        |        |        |        | 5 7/8            |
| 6                |        |        |        |        |        |        | 6                |

## 27 YEARS

### Interest Payable Yearly

| Per Ct<br>Per An | 2 1/2% | 3%     | 3 1/2% | 4%     | 4 1/2% | 5%     | Per Ct<br>Per An |
|------------------|--------|--------|--------|--------|--------|--------|------------------|
| 2 1/2            | 100.00 | 106.20 | 112.00 | 119.19 | 125.97 | 132.92 | 2 1/2            |
| 2 5/8            | 98.49  | 104.60 | 110.90 | 117.40 | 124.07 | 130.92 | 2 5/8            |
| 2 3/4            | 97.01  | 103.03 | 109.24 | 115.64 | 122.21 | 128.96 | 2 3/4            |
| 2 7/8            | 95.57  | 101.50 | 107.62 | 113.92 | 120.39 | 127.04 | 2 7/8            |
| 3                | 94.16  | 100.00 | 106.03 | 112.23 | 118.61 | 125.16 | 3                |
| 3 1/8            | 92.78  | 98.53  | 104.47 | 110.58 | 116.87 | 123.32 | 3 1/8            |
| 3 1/4            | 91.42  | 97.10  | 102.95 | 108.97 | 115.17 | 121.52 | 3 1/4            |
| 3 1/2            | 90.10  | 95.69  | 101.46 | 107.40 | 113.50 | 119.77 | 3 1/2            |
| 3 3/4            | 88.81  | 94.32  | 100.00 | 105.85 | 111.87 | 118.05 | 3 3/4            |
| 3 4/4            | 87.54  | 92.97  | 98.57  | 104.34 | 110.27 | 116.37 | 3 4/4            |
| 3 5/8            | 86.30  | 91.66  | 97.13  | 102.86 | 108.70 | 114.73 | 3 5/8            |
| 3 3/4            | 85.08  | 90.36  | 95.71  | 101.42 | 107.16 | 113.10 | 3 3/4            |
| 4                | 83.90  | 89.10  | 94.47  | 100.00 | 105.68 | 111.52 | 4                |
| 4 1/8            | 82.73  | 87.87  | 93.16  | 98.61  | 104.22 | 109.97 | 4 1/8            |
| 4 1/4            | 81.59  | 86.65  | 91.88  | 97.25  | 102.78 | 108.46 | 4 1/4            |
| 4 1/2            | 80.48  | 85.47  | 90.62  | 95.92  | 101.38 | 106.97 | 4 1/2            |
| 4 3/4            | 79.38  | 84.31  | 89.39  | 94.62  | 100.00 | 105.52 | 4 3/4            |
| 4 4/4            | 78.31  | 83.17  | 88.19  | 93.34  | 98.65  | 104.10 | 4 4/4            |
| 4 5/8            | 77.26  | 82.06  | 87.00  | 92.10  | 97.33  | 102.70 | 4 5/8            |
| 4 3/4            | 76.24  | 80.97  | 85.85  | 90.87  | 96.04  | 101.34 | 4 3/4            |
| 5                | 75.23  | 79.90  | 84.71  | 89.67  | 94.77  | 100.00 | 5                |

## 28 YEARS

### Interest Payable Yearly

| Per Ct<br>Per An | 2 1/2% | 3%     | 3 1/2% | 4%     | 4 1/2% | 5%     | Per Ct<br>Per An |
|------------------|--------|--------|--------|--------|--------|--------|------------------|
| 2 1/2            | 100.00 | 106.40 | 113.01 | 119.82 | 126.82 | 134.01 | 2 1/2            |
| 2 5/8            | 98.49  | 104.91 | 112.03 | 118.95 | 125.65 | 132.92 | 2 5/8            |
| 2 3/4            | 97.01  | 103.43 | 110.53 | 118.13 | 124.49 | 131.80 | 2 3/4            |
| 2 7/8            | 95.57  | 101.95 | 109.05 | 117.35 | 123.33 | 130.72 | 2 7/8            |
| 3                | 94.16  | 100.50 | 107.85 | 116.61 | 122.17 | 129.67 | 3                |
| 3 1/8            | 92.78  | 99.09  | 106.62 | 115.91 | 121.02 | 128.64 | 3 1/8            |
| 3 1/4            | 91.42  | 97.71  | 105.46 | 115.24 | 119.89 | 127.62 | 3 1/4            |
| 3 1/2            | 90.10  | 96.36  | 104.32 | 114.61 | 118.78 | 126.61 | 3 1/2            |
| 3 3/4            | 88.81  | 95.04  | 103.21 | 114.01 | 117.69 | 125.61 | 3 3/4            |
| 3 4/4            | 87.54  | 93.75  | 102.12 | 113.44 | 116.62 | 124.62 | 3 4/4            |
| 3 5/8            | 86.30  | 92.49  | 101.05 | 112.90 | 115.57 | 123.64 | 3 5/8            |
| 3 3/4            | 85.08  | 91.26  | 100.00 | 112.39 | 114.54 | 122.67 | 3 3/4            |
| 4                | 83.90  | 90.06  | 98.97  | 111.91 | 113.53 | 121.71 | 4                |
| 4 1/8            | 82.73  | 88.89  | 97.96  | 111.46 | 112.54 | 120.76 | 4 1/8            |
| 4 1/4            | 81.59  | 87.74  | 96.97  | 111.03 | 111.57 | 119.82 | 4 1/4            |
| 4 1/2            | 80.48  | 86.61  | 96.00  | 110.62 | 110.62 | 118.89 | 4 1/2            |
| 4 3/4            | 79.38  | 85.50  | 95.05  | 110.23 | 109.69 | 117.97 | 4 3/4            |
| 4 4/4            | 78.31  | 84.41  | 94.12  | 109.86 | 108.78 | 117.06 | 4 4/4            |
| 4 5/8            | 77.26  | 83.34  | 93.21  | 109.51 | 107.89 | 116.16 | 4 5/8            |
| 4 3/4            | 76.24  | 82.29  | 92.32  | 109.18 | 107.02 | 115.27 | 4 3/4            |
| 5                | 75.23  | 81.26  | 91.45  | 108.87 | 106.17 | 114.39 | 5                |



## 29 YEARS

### Interest Payable Yearly

| Per Ct<br>Per An | 2 1/2% | 3%     | 3 1/2% | 4%     | 4 1/2% | 5%     | Per Ct<br>Per An |
|------------------|--------|--------|--------|--------|--------|--------|------------------|
| 2 1/8            | 100.00 | 106.50 | 113.41 | 120.43 | 127.66 | 135.09 | 2 1/8            |
| 2 3/8            | 98.40  | 104.89 | 111.59 | 118.50 | 125.62 | 132.92 | 2 3/8            |
| 2 5/8            | 96.83  | 103.22 | 109.82 | 116.62 | 123.62 | 130.81 | 2 5/8            |
| 2 7/8            | 95.31  | 101.59 | 108.01 | 114.78 | 121.67 | 128.75 | 2 7/8            |
| 3                | 93.81  | 100.00 | 106.39 | 112.98 | 119.76 | 126.73 | 3                |
| 3 1/8            | 92.36  | 98.45  | 104.74 | 111.23 | 117.90 | 124.76 | 3 1/8            |
| 3 1/4            | 90.93  | 96.93  | 103.12 | 109.51 | 116.08 | 122.84 | 3 1/4            |
| 3 1/2            | 89.54  | 95.44  | 101.54 | 107.83 | 114.31 | 120.96 | 3 1/2            |
| 3 3/4            | 88.18  | 93.99  | 100.00 | 106.19 | 112.57 | 119.12 | 3 3/4            |
| 3 5/8            | 86.85  | 92.58  | 98.49  | 104.59 | 110.87 | 117.32 | 3 5/8            |
| 3 3/4            | 85.55  | 91.19  | 97.12  | 103.02 | 109.21 | 115.57 | 3 3/4            |
| 3 7/8            | 84.28  | 89.83  | 95.78  | 101.50 | 107.59 | 113.85 | 3 7/8            |
| 4                | 83.04  | 88.51  | 94.47  | 100.00 | 106.00 | 112.17 | 4                |
| 4 1/8            | 81.82  | 87.21  | 92.79  | 98.54  | 104.45 | 110.53 | 4 1/8            |
| 4 1/4            | 80.63  | 85.95  | 91.44  | 97.11  | 102.93 | 108.92 | 4 1/4            |
| 4 1/2            | 79.47  | 84.71  | 90.12  | 95.71  | 101.45 | 107.35 | 4 1/2            |
| 4 3/4            | 78.33  | 83.50  | 88.83  | 94.34  | 100.00 | 105.82 | 4 3/4            |
| 4 5/8            | 77.22  | 82.31  | 87.57  | 93.01  | 98.58  | 104.32 | 4 5/8            |
| 4 3/4            | 76.13  | 81.15  | 86.34  | 91.69  | 97.19  | 102.85 | 4 3/4            |
| 4 7/8            | 75.07  | 80.02  | 85.13  | 90.41  | 95.83  | 101.41 | 4 7/8            |
| 5                | 74.03  | 78.91  | 83.95  | 89.15  | 94.50  | 100.00 | 5                |

## 30 YEARS

### Interest Payable Yearly

| Per Ct<br>Per An | 2 1/2% | 3%     | 3 1/2% | 4%     | 4 1/2% | 5%     | Per Ct<br>Per An |
|------------------|--------|--------|--------|--------|--------|--------|------------------|
| 2 1/8            | 100.00 | 106.78 | 113.80 | 121.04 | 128.49 | 136.15 | 2 1/8            |
| 2 3/8            | 98.51  | 105.31 | 112.03 | 119.05 | 126.33 | 133.91 | 2 3/8            |
| 2 5/8            | 96.15  | 103.31 | 110.10 | 117.10 | 124.31 | 131.72 | 2 5/8            |
| 2 7/8            | 95.18  | 101.64 | 108.31 | 115.20 | 122.30 | 129.59 | 2 7/8            |
| 3                | 93.65  | 100.00 | 106.57 | 113.35 | 120.33 | 127.50 | 3                |
| 3 1/8            | 92.15  | 98.40  | 104.87 | 111.54 | 118.41 | 125.47 | 3 1/8            |
| 3 1/4            | 90.69  | 96.84  | 103.21 | 109.77 | 116.53 | 123.48 | 3 1/4            |
| 3 1/2            | 89.27  | 95.22  | 101.58 | 108.04 | 114.70 | 121.54 | 3 1/2            |
| 3 3/4            | 87.87  | 93.53  | 100.00 | 106.36 | 112.91 | 119.64 | 3 3/4            |
| 3 5/8            | 86.51  | 92.38  | 98.45  | 104.71 | 111.16 | 117.79 | 3 5/8            |
| 3 3/4            | 85.18  | 90.96  | 96.94  | 103.11 | 109.46 | 115.98 | 3 3/4            |
| 3 7/8            | 83.89  | 89.58  | 95.46  | 101.54 | 107.79 | 114.21 | 3 7/8            |
| 4                | 82.62  | 88.22  | 94.02  | 100.00 | 106.16 | 112.49 | 4                |
| 4 1/8            | 81.38  | 86.90  | 92.61  | 98.52  | 104.57 | 110.80 | 4 1/8            |
| 4 1/4            | 80.17  | 85.61  | 91.23  | 97.03  | 103.01 | 109.15 | 4 1/4            |
| 4 1/2            | 78.98  | 84.34  | 89.88  | 95.60  | 101.49 | 107.54 | 4 1/2            |
| 4 3/4            | 77.82  | 83.10  | 88.56  | 94.20  | 100.00 | 105.96 | 4 3/4            |
| 4 5/8            | 76.69  | 81.90  | 87.28  | 92.83  | 98.55  | 104.42 | 4 5/8            |
| 4 3/4            | 75.59  | 80.71  | 86.02  | 91.49  | 97.12  | 102.91 | 4 3/4            |
| 4 7/8            | 74.50  | 79.56  | 84.79  | 90.18  | 95.73  | 101.44 | 4 7/8            |
| 5                | 73.45  | 78.43  | 83.58  | 88.90  | 94.37  | 100.00 | 5                |





