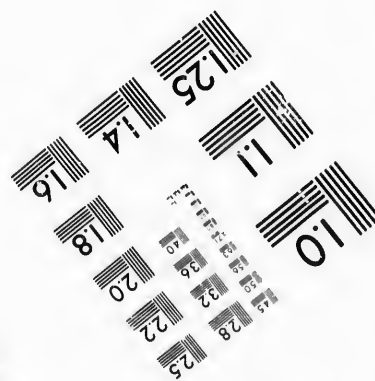
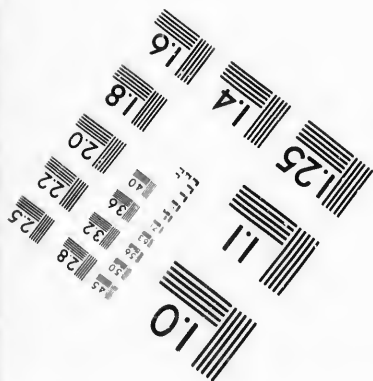
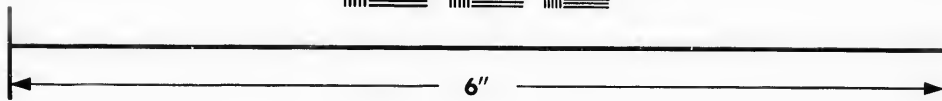
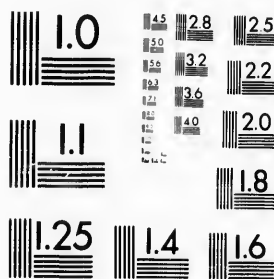


**IMAGE EVALUATION  
TEST TARGET (MT-3)**



**Photographic  
Sciences  
Corporation**

23 WEST MAIN STREET  
WEBSTER, N.Y. 14580  
(716) 872-4503

**CIHM/ICMH  
Microfiche  
Series.**

**CIHM/ICMH  
Collection de  
microfiches.**



Canadian Institute for Historical Microreproductions / Institut canadien de microreproductions historiques

**© 1987**

Technical and Bibliographic Notes/Notes techniques et bibliographiques

The Institute has attempted to obtain the best original copy available for filming. Features of this copy which may be bibliographically unique, which may alter any of the images in the reproduction, or which may significantly change the usual method of filming, are checked below.

L'Institut a microfilmé le meilleur exemplaire qu'il lui a été possible de se procurer. Les détails de cet exemplaire qui sont peut-être uniques du point de vue bibliographique, qui peuvent modifier une image reproduite, ou qui peuvent exiger une modification dans la méthode normale de filmage sont indiqués ci-dessous.

- Coloured covers/  
Couverture de couleur
- Covers damaged/  
Couverture endommagée
- Covers restored and/or laminated/  
Couverture restaurée et/ou pelliculée
- Cover title missing/  
Le titre de couverture manque
- Coloured maps/  
Cartes géographiques en couleur
- Coloured ink (i.e. other than blue or black)/  
Encre de couleur (i.e. autre que bleue ou noire)
- Coloured plates and/or illustrations/  
Planches et/ou illustrations en couleur
- Bound with other material/  
Relié avec d'autres documents
- Tight binding may cause shadows or distortion  
along interior margin/  
La reliure serrée peut causer de l'ombre ou de la  
distorsion le long de la marge intérieure
- Blank leaves added during restoration may  
appear within the text. Whenever possible, these  
have been omitted from filming/  
Il se peut que certaines pages blanches ajoutées  
lors d'une restauration apparaissent dans le texte,  
mais, lorsque cela était possible, ces pages n'ont  
pas été filmées.
- Additional comments:/  
Commentaires supplémentaires:

- Coloured pages/  
Pages de couleur
- Pages damaged/  
Pages endommagées
- Pages restored and/or laminated/  
Pages restaurées et/ou pelliculées
- Pages discoloured, stained or foxed/  
Pages décolorées, tachetées ou piquées
- Pages detached/  
Pages détachées
- Showthrough/  
Transparence
- Quality of print varies/  
Qualité inégale de l'impression
- Includes supplementary material/  
Comprend du matériel supplémentaire
- Only edition available/  
Seule édition disponible
- Pages wholly or partially obscured by errata  
slips, tissues, etc., have been refilmed to  
ensure the best possible image/  
Les pages totalement ou partiellement  
obscurcies par un feuillet d'errata, une pelure,  
etc., ont été filmées à nouveau de façon à  
obtenir la meilleure image possible.

This item is filmed at the reduction ratio checked below/  
Ce document est filmé au taux de réduction indiqué ci-dessous.

|     |     |     |     |     |     |     |     |     |     |     |     |
|-----|-----|-----|-----|-----|-----|-----|-----|-----|-----|-----|-----|
| 10X | 12X | 14X | 16X | 18X | 20X | 22X | 24X | 26X | 28X | 30X | 32X |
|     |     |     |     |     | /   |     |     |     |     |     |     |

The copy filmed here has been reproduced thanks to the generosity of:

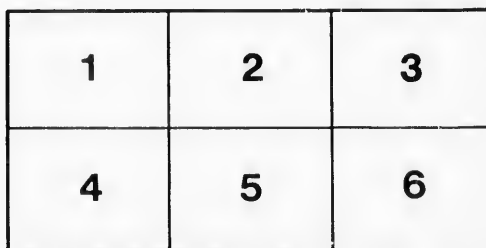
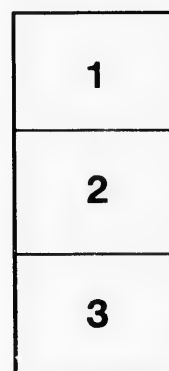
New Brunswick Museum  
St. John

The images appearing here are the best quality possible considering the condition and legibility of the original copy and in keeping with the filming contract specifications.

Original copies in printed paper covers are filmed beginning with the front cover and ending on the last page with a printed or illustrated impression, or the back cover when appropriate. All other original copies are filmed beginning on the first page with a printed or illustrated impression, and ending on the last page with a printed or illustrated impression.

The last recorded frame on each microfiche shall contain the symbol  $\rightarrow$  (meaning "CONTINUED"), or the symbol  $\nabla$  (meaning "END"), whichever applies.

Maps, plates, charts, etc., may be filmed at different reduction ratios. Those too large to be entirely included in one exposure are filmed beginning in the upper left hand corner, left to right and top to bottom, as many frames as required. The following diagrams illustrate the method:



L'exemplaire filmé fut reproduit grâce à la générosité de:

New Brunswick Museum  
St. John

Les images suivantes ont été reproduites avec le plus grand soin, compte tenu de la condition et de la netteté de l'exemplaire filmé, et en conformité avec les conditions du contrat de filmage.

Les exemplaires originaux dont la couverture en papier est imprimée sont filmés en commençant par le premier plat et en terminant soit par la dernière page qui comporte une empreinte d'impression ou d'illustration, soit par le second plat, selon le cas. Tous les autres exemplaires originaux sont filmés en commençant par la première page qui comporte une empreinte d'impression ou d'illustration et en terminant par la dernière page qui comporte une telle empreinte.

Un des symboles suivants apparaîtra sur la dernière image de chaque microfiche, selon le cas: le symbole  $\rightarrow$  signifie "A SUIVRE", le symbole  $\nabla$  signifie "FIN".

Les cartes, planches, tableaux, etc., peuvent être filmés à des taux de réduction différents. Lorsque le document est trop grand pour être reproduit en un seul cliché, il est filmé à partir de l'angle supérieur gauche, de gauche à droite, et de haut en bas, en prenant le nombre d'images nécessaire. Les diagrammes suivants illustrent la méthode.

ails  
du  
difier  
une  
page

crata  
o  
elure,  
à

32X



# LIST OF ELECTORS, 1890.

QUALIFIED TO VOTE FOR MEMBERS OF THE HOUSE OF ASSEMBLY.

## KINGS WARD.

|                               |                   |                       |               |
|-------------------------------|-------------------|-----------------------|---------------|
| Allison, Lucius C             | <i>M D</i>        | Bradley, Thomas       | hostler       |
| Armstrong, John R             | barrister         | Belyea, Ezekiel       | teamster      |
| Addy, Henry G                 | <i>M D</i>        | Beverly, James L      | clerk         |
| Allison, Frank O              | clerk             | Buckley, James        | laborer       |
| Arnold, R Heber               | ins agent         | Buckley, William      | printer       |
| Andrews, Joseph               | <i>M D</i>        | Burns, Henry H        | r r emp       |
| Adams, Arthur W               | clerk             | Banbury, William      | cigar maker   |
| Armstrong, John               | gent              | Barry, Michael        | laborer       |
| Alston, John                  | clerk             | Byrne, James W        | printer       |
| Alston, John jr               | do                | Barker, G Minchin     | grocer        |
| Alston, Frank                 | do                | Black, Steadman       | r r emp       |
| Amos, John                    | blacksmith        | Britain, Robert       | bdg house     |
| Allan, Louis                  | painter           | Barlow, Wilford M     | clerk         |
| Appt, Stephen                 | fireman           | Burke, Timothy        | laborer       |
| Akerly, James                 | cabinet mr        | Burke, James          | do            |
| Alston, William               | last maker        | Burke, Michael        | boiler maker  |
| Allen, Frederick              | seaman            | Bean, Patrick         | teamster      |
| Ahearn, John                  | laborer           | Brace, Joseph         | laborer       |
| Ahearn, William               | do                | Bisson, Edward B      | tinsmith      |
| Auning, George A              |                   | Berry, Joseph         | r r con       |
|                               | heir J. B. Anning | Barbour, Robert       | carpenter     |
| Anning, Benjamin              | do                | Barlow, Charles W     | clerk         |
| Arnold, William               | clerk             | Belyea, James A       | engine driver |
|                               |                   | Brittain, James       | clerk         |
| Barnes, Robert R              | stationer         | Barnes, J. Pope       | merchant      |
| Barlow, Edwin W               | joiner            | Bradley, Joseph       | machinist     |
| Blackhall, Michael            | livery stable     | Bryden, James G       | baker         |
| Bostwick, James J             | merchant          |                       |               |
| Bustin, Augustus T            | music dlr         | Corkery, Michael      | leather dlr   |
| Boyd, B C Barclay             | clerk             | Crawford, William K   | yecman        |
| Bond, James                   | do                | Clinch, Robert T      | tel supt      |
| Brigstocke, Rev Frederick H J |                   | Currie, Thomas        | joiner        |
| Beverly, Fulton               | mercht            | Christie, James       | <i>M D</i>    |
| Bean, James                   | moulder           | Chisholm, Peter       | grocer        |
| Burditt, William F            | merchant          | Clarke, Thomas        | merchant      |
| Blackadar, Frederick          | china dlr         | Case, Bradbury J      | bdg house     |
| Boyd, R Murray                | clerk             | Clinch, Peter         | ins agent     |
| Barker, George B              | druggist          | Costigan, Denis       | tavern        |
| Binning, Alexander            | clerk             | Cruikshank, Patrick A | saloon        |
| Bell, Adam R                  | wine mercht       | Collins, Jonn         | police        |
| Barry, John                   | hardware mercht   | Carter, Edward S      | editor        |
| Barry, Robert                 | lab               | Caldwell, George P    | dentist       |
| Beatley, John A               | engineer          | Cotter, Patrick       | tel emp       |
| Burpee, George ER             | mercht            | Cunningham, William J | saloon        |
| Barry, Patrick                | lab               | Collier, William E    | bank man'r    |
| Barry, Bernard                | do                | Cunningham, Robert    | brush mr      |
| Bustin James                  | flour inspector   | Carroll, John         | clerk         |
| Bonnell, Walter P             | dentist           | Colwell, Robert       | painter       |

|                         |                |                     |            |
|-------------------------|----------------|---------------------|------------|
| Clarke, Arthur E        | clerk          | DeVeber, Leverett H | gent       |
| Cleveland George        | foreman        | Dowling, Thomas Q   | draper     |
| Chestnut, H Percy       | manufr's agt   | Daniel, Frederick W | do         |
| Christie, William       | cutter         | Drury, Henry A      | oil agent  |
| Clark, William          | teamster       | DeSoyres, Rev John  |            |
| Campbell, G Wilford     | springmr       | Dunphy, Wardlaw P   | bar tender |
| Como, Henry             | r r emp        | DeForest, John      | laborer    |
| Crookshank, Francis     | laborer        | DeForest, Thomas    | do         |
| Chute, James            | house raiser   | Drayton, William V  | clerk      |
| Cooper, Hedley V        | gent           | Day, George E       | printer    |
| Campbell, Charles       | tel emp        | Driscoll, Michael   | laborer    |
| Crocker, Frederick S    | account't      | Doherty, William    | seaman     |
| Crowley, Michael        | furnace man    | Davis, Edward N     | dentist    |
| Crowley, Patrick        | feeder         | Duffy, John         | trader     |
| Connolly, James         | cooper         | Duffy, John L       | clerk      |
| Coughlan, Thomas        | ferry coll'r   | Duffy, Frank J      | do         |
| Coholan, John           | clerk          | Donovan, Daniel jr  | laborer    |
| Coll, Denis             | chandler       | Dunlop, Thomas A    | trader     |
| Connors, John           | laborer        | Durgan, Bradford G  | carpenter  |
| Connors, Daniel         | bar tender     | Dole, William P     | teacher    |
| Connors, John           | machinist      | Donohue, Thomas     | laborer    |
| Costigan, Michael       | laborer        | Delaney, Denis      | draper     |
| Costigan, Daniel        | bdg house      | Dean, Thomas J      | grocer     |
| Cotter, John            | laborer        | Dickson, John E E   | account't  |
| Cotter, Edward          | do             | Dodge, Albert A,    | r r emp    |
| Collins, Jeremiah       | do             | Doherty, Michael J  | laborer    |
| Crowley, Timothy        | rigger         | Dunfield, George    | clerk      |
| Cain, Cornelius         | laborer        | Dunlop, Robert      | laborer    |
| Carter, Benjamin        | yeoman         | Donovan, William    | do         |
| Crawford, Robert        | laborer        | Driscoll, Timothy   | saloon     |
| Croley, John            | cordwainer     | Donovan, Michael    | laborer    |
| Croley, William         | moulder        | Driscoll, Cornelius | do         |
| Connolly, Thomas        | laborer        | Daley, Denis        | do         |
| Collins, Denis          | do             | Donovan, Timothy    | cartman    |
| Canty, Timothy          | do             | Deneen, Cornelius   | laborer    |
| Corbitt, William        | do             | Driscoll, Florence  | do         |
| Connors, John           | do             | Doherty, John       | cartman    |
| Condon, Redmond         | cordwainer     | Dolan, John         | beer maker |
| Carveill, Harold H      | r r emp        | Daley, William      | cartman    |
| Clark, Frank F          | clerk          | Donovan, Andrew     | laborer    |
| Campbell, J. Roy        | attorney       | DeForest, Thomas    | do         |
| Clark, George           | carpenter      | Daley, Michael      | laborer    |
| Carle, Frank B.         | clerk          |                     |            |
| Carter, Frank           | printer        | Estey, Edward E     | surveyor   |
| Crawford, Henry J W     | tinsmith       | Earle, Allen O      | barrister  |
| Crawford, Robert        | porter i c r   | Edwards, Matthew B  | ins agent  |
|                         |                | Elliott, Elias W    | hotel      |
| DeVeber, J S Boies      | Co Treas       | Ennis, James        | bar tender |
| Daniel, Thomas W        | mercht         | Evans, Harry        | porter     |
| Dever, Hon James        |                |                     |            |
| Dean, Thomas            | boarding house | Fleming, William    | founder    |
| Dixon, Samuel A         | yeoman         | Fleming, James      | do         |
| Donovan, Daniel         | do             | Fielders, John      | clerk      |
| Davidson, William J     | mercht         | Flood, Patrick      | mason      |
| DeVeber, Rev William II |                | Ferguson, Robert E  | gent       |
| Daniel, George W        | clerk          | Finley, Robert      | laborer    |

Flew  
Frink  
Friel,  
Fitzpa  
Fairw  
Foster  
Fraser  
Flew  
Finn,  
Fry, V  
Fairw  
Foley  
Fairw  
Fowle  
Fitzm  
Fairw  
Flynn  
Fitzg  
Fitzg  
Foster  
Fooly  
Flynn  
Fairw  
Flemi  
Foster  
Ferre  
Gibso  
Green  
Gibso  
Gilbe  
Gillis,  
Gould  
Gallag  
Guild  
Gorle  
Goldst  
Garne  
Ganni  
Gilles  
Grady  
Gallag  
Gillila  
Graha  
Garsic  
Gibson  
Hanfo  
Hall,  
Hunte  
Hardi  
Hanin  
Harris  
Houra  
Hartin  
Hethe

|                                   |                                 |
|-----------------------------------|---------------------------------|
| Flewelling Guilford mercht        | Harrison, Thomas tailor         |
| Frink, James H veterinary sur     | Henry, Charles jr accountant    |
| Friel, Edward clothier            | Harvey, Gordon G do             |
| Fitzpatrick, Frederick G S trader | Hall, William H spinner         |
| Fairweather, George E barrister   | Hanington, Guthrie r r clerk    |
| Foster, Edwin C tack maker        | Hill, James laborer             |
| Fraser, John D clerk              | Hopper, Darius bdg house        |
| Flewelling, Charles H engraver    | Hamilton, Henry blacksmith      |
| Finn, William rigger              | Henderson, William R barber     |
| Fry, William H stenographer       | Hornebrook, John W clerk        |
| Fairweather, G Warren clerk       | Haggerty, James laborer         |
| Foley, H Terence tavern           | Hazen, Robert P clerk           |
| Fairweather, Charles E surveyor   | Hooly, Timothy bottler          |
| Fowler, Burpee machinist          | Hanlon, John teamster           |
| Fitzmaurice, John carpenter       | Hamilton, W Benjamin travel'r   |
| Fairweather, Miles r r emp        | Henderson, Joseph carpenter     |
| Flynn, Patrick laborer            | Heffernon, James laborer        |
| Fitzgerald, Michael baker         | Hatch, Willoughby clerk         |
| Fitzgerald, Daniel cordwainer     | Hatch, Henry H r r emp          |
| Foster, Thomas laborer            | Humphrey, James R watchman      |
| Foohy, David chandler             | Higgins, Alonzo laborer         |
| Flynn, John P printer             | Hill, Robert letter carrier     |
| Fairweather, Walter C clerk       | Harrington, James cordwainer    |
| Fleming, George W bookkeeper      | Hollis, Frank traveller         |
| Foster, John H do                 | Heenan, Daniel laborer          |
| Ferrie, Terence J tinsmith        | Hennessey, Garrett, laborer     |
|                                   | Hennessey, Patrick boiler mr    |
| Gibson, William C jeweller        | Houlahan, Cornelius laborer     |
| Green, Louis tobacconist          | Hennebery, Andrew seaman        |
| Gibson, Alexander                 | Hutchison, James M D            |
| Gilbert, Harold merchant          | Hooper, George P cutter         |
| Gillis, John R yeoman             | Hunter, Thomas carpenter        |
| Gould, Cyrus blacksmith           |                                 |
| Gallagher, Daniel J butcher       | Iddiols, Henry F locksmith      |
| Guild, Robert restaurant          | Isaacs, Alfred tobacconist      |
| Gorley, Hugh laborer              | Ingraham, Edgar W R clerk       |
| Goldsworthy, William mason        |                                 |
| Garnett, Robert laborer           | Johnston, Charles H S painter   |
| Gannivan, John laborer            | Johnston, Charles H I. M D      |
| Gillespie, Edward do              | Jackson, John porter            |
| Grady, Patrick do                 | Johnston, Gustave bdg house     |
| Gallagher, James teamster         | Jones, William florist          |
| Gilliland, James R telegrapher    | Jones, Frederick A trader       |
| Graham, William K milk dlr        | Jamieson, David teamster        |
| Garside, John cotton operative    | Johnson, John M. wool mill      |
| Gibson, Robert clerk              | Jones, James potter             |
|                                   | Jamieson, Robert clerk          |
| Hanford, Thomas gent              | Jones, Charles T teamster       |
| Hall, David H appraiser           | Jones, James B cartman          |
| Hunter, Roger printer             |                                 |
| Harding, William S M D            | Kaye, James J barrister         |
| Hanington, Thomas B auctic'r      | Kinnear, Charles F merchant     |
| Harrison, Jeremiah mercht         | King, Samuel T millman          |
| Hourahan, Thomas cartman          | Kirkpatrick, Hugh clothier      |
| Hartin, Bartholomew, seaman       | Kaye, J Sidney ins agent        |
| Hetherington, George A M D        | Kinsella, Augustine stonecutte: |



|                     |                   |                        |              |
|---------------------|-------------------|------------------------|--------------|
| Kaye, Edmund G      | barrister         | Mayall, Charles        | porter       |
| Kearney, Patrick    | yeoman            | Morris, Hugh           | yardman      |
| Kaye, F William     | clerk             | Murray, Charles A      | traveller    |
| Kerr, John A        | stables           | Mills, Herbert G       | clerk        |
| Kinnear, Harrison   | clerk             | Mcove, James           | do           |
| Kirby, Michael      | laborer           | Moore, Robert          | tinsmith     |
| Knowles, Joseph S   | publisher         | Moore, William         | do           |
| Kyle, John          | porter            | Murray, Robert D       | clerk        |
| Kyle, Samuel        | teamster          | Murray, Frederick W    | mercht       |
| Keefe, John         | laborer           | Mahoney, Daniel        | servant      |
| Kerr, James         | teamster          | Murphy, Jcremiah       | laborer      |
| Kelly, James S      | agent             | Morley, Thomas         | organist     |
| Keohan, William M   |                   | Melick, Frederick C    | jeweller     |
|                     | heir James Keohan | Mullin, R Thomas       | clerk        |
| Keohan, Frederick   | do                | Mullin, Edward         | laborer      |
|                     |                   | Moore, Joseph R        | r r engineer |
| Lawrence, Joseph W  | gent              | Mitchell, Richard      | laborer      |
| Logan, James        | grocer            | Mercer, Joseph         | painter      |
| Long, Michael       | cartman           | Melick, Andrew W       | r r conduc'r |
| Lee, G Herbert      | barrister         | Mercer, James          | painter      |
| Lawrence, George C  | undertaker        | Masters, Arthur W      | ins agent    |
| Lawton, William G   | ins agent         | Mansfield, Michael     | laborer      |
| Logan, Robert D     | grocer            | Mullaly, Martin        | do           |
| Lyon, Edward J      | janitor           | Maher, Andrew          | tel repairor |
| Lee, Charles H      | clerk             | Moore, T Waughop       | accountant   |
| Long, James         | hostler           | Mahony, Martin         | laborer      |
| Lynam, Richard      | butcher           | Mahony, William        | do           |
| Lascalles, Edward   | clerk             | Murphy, John           | do           |
| Lemon, An-ley C     | coachman          | Moore, Edmund C        | nail maker   |
| Looney, Michael     | laborer           | Murray, John           | laborer      |
| Lascalles, Edward   | cabinet mkr       | Murray, John jr        | do           |
| Lahey, John         | laster            | Murray, James          | cartman      |
| Lantalum, Daniel    |                   | Merritt, Frank S       | clerk        |
|                     | heir J Lantalum   |                        |              |
| Lascalles, Henry    | brakeman          | McCarthy, Michael      | yeoman       |
| Lascalles, John     | salesman          | McArthur, Robert D     | druggist     |
| Logan, Charles H    | clerk             | McGivern, Richard P    | coal mer     |
|                     |                   | McLachlan, Daniel      | boiler maker |
| Magee, David        | hatter            | McLachlan, Archibald   | do           |
| Merritt, E Miles    | marshall          | McBriarty, George      | tavern       |
| Manchester, James   | merchant          | McCarthy, Patrick      | cartman      |
| Matthews, Samuel F  | confect'r         | McDonald, Montesquieu  | baristr      |
| Mollison, William K | merchant          | McLauchlan, John       | clerk        |
| Murphy, Timothy     | cartunan          | McDade, James          | tinsmith     |
| Melvin, Amos        | yeoman            | McLauchlan, William W  | clerk        |
| Minehan, James      | butcher           | McGivern, James S      | do           |
| Montgomery, James W | mercht            | McMann, Silas C        | merchant     |
| Murray, Charles     | cordwainer        | McGivern, Richard P jr | barristr     |
| Maber, William      | messenger         | McCormack, Daniel W    | hotel        |
| Murray, George      | wine mercht       | McAlpine, David        | publisher    |
| Murphy, James       | bdg house         | McCarthy, Daniel       | r r emp      |
| Mossman, George L   | druggist          | McAvity, Stephen S     | clerk        |
| Magee, James M      | dentist           | McGregor, Charles      | druggist     |
| Morrison, William S | M D               | McFarland, Rev Armor   | J            |
| Murphy, James       | viualler          | McGill, Lawrence       | cordwainer   |
| Moore, John E       | clerk             | McDonough, William     | tavern       |

|                      |              |                     |              |
|----------------------|--------------|---------------------|--------------|
| McBriarty, John J    | cook         | O'Leary, Timothy    | yeoman       |
| McInnis, James A     | tailor       | O'Neill, William    | boiler maker |
| MacRae, Rev Donald   |              | O'Connell, Patrick  | laborer      |
| McKean, George L     | merchant     | O'Connell, Daniel   | do           |
| McLaughlan, Patrick  | yeoman       | O'Leary, James      | do           |
| McCallum, Michael    | tavern       | Olive, D Millar     | accountant   |
| MacRae, Alexander W  | student      | O'Neill, Henry      | bar tender   |
| MacLaren, Murray     | <i>M D</i>   | O'Neill, Philip     | grocer       |
| McCormack, William P | hotel        | O'Brien, James      | laborer      |
| McCullough, Henry A  | clerk        | O'Leary, Humphrey   | cartman      |
| McGuire, Thomas      | cook         | O'Donohue, Denis    | laborer      |
| McPherson, Charles D | clerk        | O'Brien, Timothy    | do           |
| McIlveen, John       | carpenter    | O'Brien, James      | baker        |
| McSorley, Terence    | clerk        | O'Neill, John       | nail cutter  |
| McCarthy, Cornelius  | grocer       | O'Leary, James      | do           |
| MacGregor, Charles S | clerk        | O'Neill, Charles    | boiler maker |
| McCarron, James A    | <i>M D</i>   | O'Grady, John       | cartman      |
| McMackin, Howard J   | clerk        | O'Brien, James      | laborer      |
| McCallum, Daniel     | laborer      | O'Leary, Cornelius  | do           |
| McAlpine, Lemuel A   | <i>M D</i>   | O'Riley, James      | brushmaker   |
| McCarthy, Randall    | laborer      | Prince, James       | marshal      |
| McCarthy, Martin     | lamplighter  | Prescott, Gideon    | gent         |
| McDonald, Daniel     | agent        | Pugsley, Gilbert R  | barrister    |
| McDonald, Patrick    | butcher      | Pugsley, William jr | do           |
| McLean, Charles F    | helper       | Pender, James       | nail maker   |
| McGrath, Michael     | grocer       | Pierce, John        | barber       |
| McNamee, William     | laborer      | Porter, W Alexander | grocer       |
| McCarthy, Denis      | clerk        | Potts, Thomas       | trader       |
| McKay, Thomas        | laborer      | Purdy, Walter O     | nailmaker    |
| McGrath, John        | stone cutter | Preston, Edward A   | <i>M D</i>   |
| McCarthy, Jeremiah   | laborer      | Peters, Leonard S   | porter       |
| McCarthy, Florence   | clerk        | Palmer, George H    | traveller    |
| McCarthy, James      | laborer      | Perry, George H     | fireman      |
| McCarthy, Charles    | do           | Perry, Xenophon     | trader       |
| McCarthy, John       | cartman      | Perkins, Walter     | agent        |
| McAlpine, Hezekiah   | agent        | Powers, John        | axemaker     |
| McAlpine, Thomas     | clerk        | Prince, Albert E    | clerk        |
| McCoir, George       | news agent   | Powers, Frank       | laborer      |
| McPherson, James     | salesman     | Pierce, Michael     | helper       |
| McPherson, Robert    | laborer      | Pound, Alfred M     | clerk        |
| MacRae, Kenneth John | clerk        | Palmer, Frederick   | brakeman     |
| McDougal, Alexander  | carpenter    | Price, Thomas       | mason        |
| McDonald, Daniel     | do           |                     |              |
| Nyhan, Michael       | yeoman       | Quinn, William H    | trader       |
| Nealis, Hugh         | clothier     | Quinton, William    | bdg house    |
| Nagle, David         | scowman      | Quailey, Timothy    | fireman      |
| Nagle, Richard       | rigger       | Quinn, Joseph       | teamster     |
| Nagle, Maurice       | stevedore    |                     |              |
| Nixon, James         | chandler     | Robinson, Thomas W  | yeoman       |
| Nyhan, Denis         | pony cart    | Rainnie, William    | gent         |
| O'Gorman, John       | grocer       | Raymond, Thomas F   | hotel        |
| O'Connell, John      | tobacconist  | Rooney, Daniel L    | trader       |
| O'Brien, John        | do           | Rankine, William    | grocer       |
| O'Brien, Edward      | laborer      | Ready, James        | beer maker   |
|                      |              | Robertson, James    | merchant     |

|                      |                |                      |                 |
|----------------------|----------------|----------------------|-----------------|
| Robertson, Stran     | druggist       | Sullivan, Anthony    | lithographer    |
| Robertson, LeBaron B | trader         | Stark, Joshua        | watchmaker      |
| Ritchie, Robert R    | barrister      | Sheehan, Daniel      | laborer         |
| Robertson, William G | sta mas'r      | Sullivan, John       | surveyor        |
| Rogers, James N      | grocer         | Scovil, R Bruce      | accountant      |
| Richford, Philip     | clerk          | Saunders, Tobias     | ship carpenter  |
| Ross, Charles        | porter         | Shiels, John         | laborer         |
| Robertson, George M  | clerk          | Shiels, John jr      | cordwainer      |
| Roiston, James       | gardener       | Setchel, William T   | teamster        |
| Rourke, Thomas       | seaman         | Short, George        | laborer         |
| Ronan, Michael       | laborer        | Seely, Frank         | spinner         |
| Robinson, Robert S   | clerk          | Strain, Thomas       | laborer         |
| Ready, Hugh          | bottler        | Secord, J Edmund     | accountant      |
| Robinson, William    | clerk          | Slader, Edward P     | carpenter       |
| Rigby, John R        | clerk          | Scott, Robert        | blacksmith      |
| Reardon, Thomas      | rigger         | Sandall, Edward      | machinist       |
| Reardon, John        | laborer        | Sheppard, Benjamin   | broom mr        |
| Rodgers, Frank       | agent          | Stockford, James L   | baker           |
| Rainnie, William J   | clerk          | Scott, Alexander     | machinist       |
| Russell, Andrew      | laborer        | Sweeney, Daniel      | laborer         |
| Russell, John A      | teamster       | Sullivan, Eugene     | seaman          |
| Robinson, Thomas,    | milk dealer    | Sullivan, Cornelius  | laborer         |
| Robertson, John D    | agent          | Sterling, William    | do              |
| Robinson, Elias H    | sniveyor       | Smith, William H     | do              |
| Rankine, Allen       | clerk          | Sutton, George       | sailmaker       |
| Reid, Robert         | printer        | Simmons, Frederick   | janitor         |
| Robertson, Blair     | clerk          | Scott, James         | clerk           |
| Raymond, James T     | grocer         | Secord, James O      | carpenter       |
| Robinson, Gilbert M  | clerk          | Stewart, Charles D   | clerk           |
| Robertson, William B | r r e          | Smith, William M     | engineer        |
|                      |                | Swinnock, James      | feathhr cleanr  |
| Starr, R Penniston   | coal mercht    | Street, Warwick W    | manager         |
| Smith, John R        | mercht         | Sealey, Thomas M     | printer         |
| Seely, Daniel J      | merchant       | Standing, James      | cotton operativ |
| Smith, George F      | gent           | Secord, James O      | salesman        |
| Smith, James W       | bdg house      | Seely, Alfred E      | clerk           |
| Schofield, Samuel    | merchant       | Smith, Frederick     | drng clerk      |
| Stanton, John        | cartman        | Sterling, John       | seaman          |
| Stothart, Thomas     | teacher        | Strain, Thomas       | porter          |
| Shea, Michael        | clerk          | Stubbs, James        | baker           |
| Straton, James       | barrister      |                      |                 |
| Short, D Henry       | livery stables | Tufts, James A       | merchant        |
| Sloven, Thomas W     | watchman       | Thorne, William H    | do              |
| Seely, James D       | clerk          | Thorne, Arthur T     | do              |
| Sime, John           | machinist      | Tufts, Frank L       | clerk           |
| Smith, N Berry       | druggist       | Travis, John         | grocer          |
| Short, Charles K     | do             | Tilton, John         | clerk           |
| Schmidt, Carl C      | jeweller       | Troop, Stephen M     | laborer         |
| Stewart, Charles W   | milk dlr       | Tower, Charles P     | bdg house       |
| Seely, J Frederick   | clerk          | Trainor, Thomas      | founder         |
| Scholl, Emil         | photographer   | Tierney, Michael     | laborer         |
| Sullivan, James T    | waiter         | Tobin, John          | do              |
| Shaw, Rev John L     |                | Toomey, John         | do              |
| Stocker, John E      | traveller      | Tierney, Patrick     | do              |
| Sullivan, Jeremiah   | laborer        | Tabor, Charles W. C. | student         |
| Sullivan, John       | do             |                      |                 |

|                     |            |                     |                     |
|---------------------|------------|---------------------|---------------------|
| Underhill, Jacob D  | clerk      | Whelan, Thomas      | spinner             |
|                     |            | Wilson, George      | carpenter           |
| Vickery, Ernest F   | clerk      | White, J Hunter     | clerk               |
|                     |            | Withers, George     | p o employe         |
| Warlock, Daniel O'L | watchmr    | Ward, John          | seaman              |
| White, Hiram B      | merchant   | Wilson, William     | restaurant          |
| Wilson, Walter      | sawmaker   | Weston, James T     | news agent          |
| Whittaker, James E  | appraiser  | Wilmot, Robert D.   |                     |
| Wilson, John E      | engineer   |                     | heir J. M. Wilmot   |
| Wilson, James       | coachmaker | Winslow, Warren C   |                     |
| Walsh, Joan         | tavern     |                     | heir George Carvill |
| Wetmore, Alfred B   | draper     | Watson, William H   | clerk               |
| Wright, Arthur W    | accountant | Whittaker, Joseph F | ins broker          |
| Walsh, James        | laborer    | Withers, Charles J  | mariner             |
| Wilson, Alexander   | sawmaker   | Withers, Frederick  | machinist           |
| Winslow, Edward P   | accountant | Withers, Nelson A   | mariner             |
| Wade, Charles F     | druggist   |                     |                     |
| Walsh, Patrick      | laborer    | Yeats, John         | merchant            |
| Willis, John        | do         | Yeats, Charles      | do                  |
| Warlock, Henry D    | watchmaker |                     |                     |

