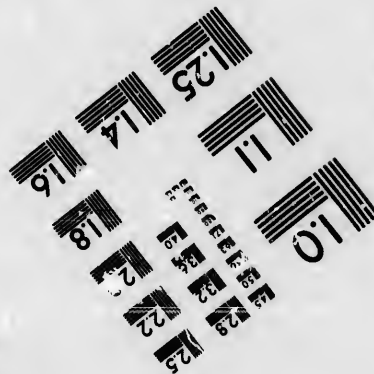
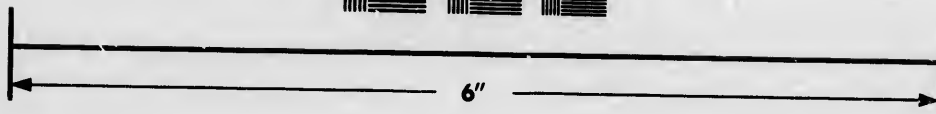
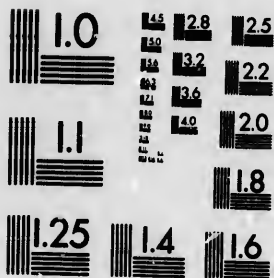


IMAGE EVALUATION
TEST TARGET (MT-3)



Photographic
Sciences
Corporation

20 WEST MAIN STREET
WEBSTER, N.Y. 14580
(716) 872-4503

1.0
1.28
1.32
1.36
1.40
1.44
1.48
1.52
1.56
1.60

**CIHM/ICMH
Microfiche
Series.**

**CIHM/ICMH
Collection de
microfiches.**



Canadian Institute for Historical Microreproductions / Institut canadien de microreproductions historiques

1.0
1.1
1.2
1.3
1.4
1.5
1.6
1.7
1.8
1.9
2.0

© 1986

Technical and Bibliographic Notes/Notes techniques et bibliographiques

The Institute has attempted to obtain the best original copy available for filming. Features of this copy which may be bibliographically unique, which may alter any of the images in the reproduction, or which may significantly change the usual method of filming, are checked below.

L'institut a microfilmé le meilleur exemplaire qu'il lui a été possible de se procurer. Les détails de cet exemplaire qui sont peut-être uniques du point de vue bibliographique, qui peuvent modifier une image reproduite, ou qui peuvent exiger une modification dans la méthode normale de filmage sont indiqués ci-dessous.

- Coloured covers/
Couverture de couleur
- Covers damaged/
Couverture endommagée
- Covers restored and/or laminated/
Couverture restaurée et/ou pelliculée
- Cover title missing/
Le titre de couverture manque
- Coloured maps/
Cartes géographiques en couleur
- Coloured ink (i.e. other than blue or black)/
Encre de couleur (i.e. autre que bleue ou noire)
- Coloured plates and/or illustrations/
Planches et/ou illustrations en couleur
- Bound with other material/
Relié avec d'autres documents
- Tight binding may cause shadows or distortion
along interior margin/
La reliure serrée peut causer de l'ombre ou de la
distorsion le long de la marge intérieure
- Blank leaves added during restoration may
appear within the text. Whenever possible, these
have been omitted from filming/
Il se peut que certaines pages blanches ajoutées
lors d'une restauration apparaissent dans le texte,
mais, lorsque cela était possible, ces pages n'ont
pas été filmées.
- Additional comments:/
Commentaires supplémentaires:

- Coloured pages/
Pages de couleur
- Pages damaged/
Pages endommagées
- Pages restored and/or laminated/
Pages restaurées et/ou pelliculées
- Pages discoloured, stained or foxed/
Pages décolorées, tachetées ou piquées
- Pages detached/
Pages détachées
- Showthrough/
Transparence
- Quality of print varies/
Qualité inégale de l'impression
- Includes supplementary material/
Comprend du matériel supplémentaire
- Only edition available/
Seule édition disponible
- Pages wholly or partially obscured by errata
slips, tissues, etc., have been refilmed to
ensure the best possible image/
Les pages totalement ou partiellement
obscurcies par un feuillet d'errata, une pelure,
etc., ont été filmées à nouveau de façon à
obtenir la meilleure image possible.

This item is filmed at the reduction ratio checked below/
Ce document est filmé au taux de réduction indiqué ci-dessous.

10X	12X	14X	16X	18X	20X	22X	24X	26X	28X	30X	32X
			✓								

The copy filmed here has been reproduced thanks to the generosity of:

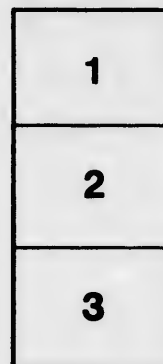
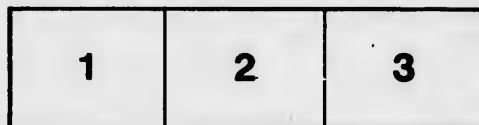
Library of the Public
Archives of Canada

The images appearing here are the best quality possible considering the condition and legibility of the original copy and in keeping with the filming contract specifications.

Original copies in printed paper covers are filmed beginning with the front cover and ending on the last page with a printed or illustrated impression, or the back cover when appropriate. All other original copies are filmed beginning on the first page with a printed or illustrated impression, and ending on the last page with a printed or illustrated impression.

The last recorded frame on each microfiche shall contain the symbol \rightarrow (meaning "CONTINUED"), or the symbol ∇ (meaning "END"), whichever applies.

Maps, plates, charts, etc., may be filmed at different reduction ratios. Those too large to be entirely included in one exposure are filmed beginning in the upper left hand corner, left to right and top to bottom, as many frames as required. The following diagrams illustrate the method:



L'exemplaire filmé fut reproduit grâce à la générosité de:

La bibliothèque des Archives
publiques du Canada

Les images suivantes ont été reproduites avec le plus grand soin, compte tenu de la condition et de la netteté de l'exemplaire filmé, et en conformité avec les conditions du contrat de filmage.

Les exemplaires originaux dont la couverture en papier est imprimée sont filmés en commençant par le premier plat et en terminant soit par la dernière page qui comporte une empreinte d'impression ou d'illustration, soit par le second plat, selon le cas. Tous les autres exemplaires originaux sont filmés en commençant par la première page qui comporte une empreinte d'impression ou d'illustration et en terminant par la dernière page qui comporte une telle empreinte.

Un des symboles suivants apparaîtra sur la dernière image de chaque microfiche, selon le cas: le symbole \rightarrow signifie "A SUIVRE", le symbole ∇ signifie "FIN".

Les cartes, planches, tableaux, etc., peuvent être filmés à des taux de réduction différents. Lorsque le document est trop grand pour être reproduit en un seul cliché, il est filmé à partir de l'angle supérieur gauche, de gauche à droite, et de haut en bas, en prenant le nombre d'images nécessaire. Les diagrammes suivants illustrent la méthode.

errata
to

pelure,
n à

Rules and Regulations

OF THE

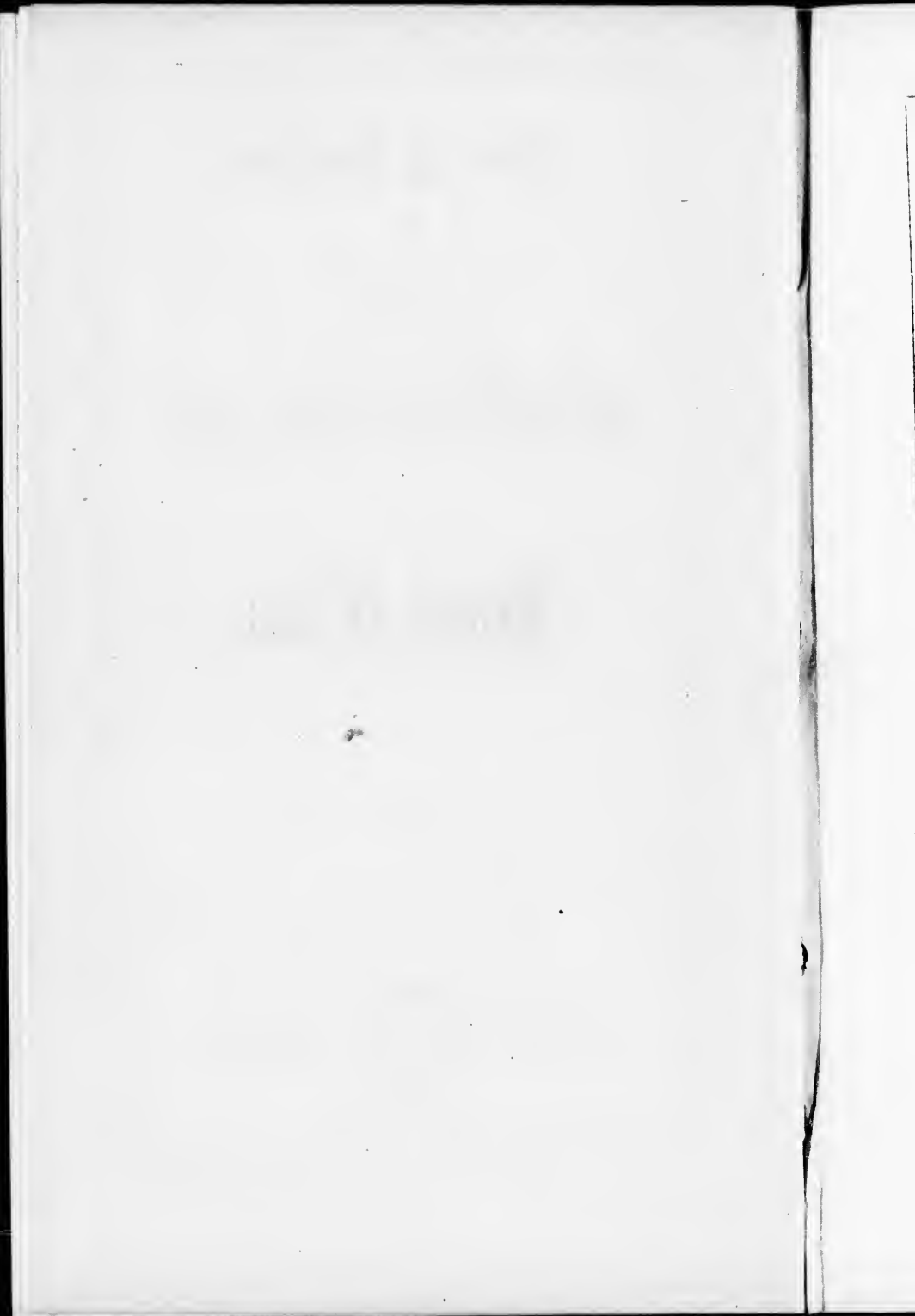
BURLINGTON BAY

Boat Club.

Hamilton :

NICHOLSON, M'INTOSH & CO., PRINTERS,
KING STREET.

1854.



Rules and Regulations

OF THE

BURLINGTON BAY

Boat Club.

Hamilton :

NICHOLSON, M'INTOSH & CO., PRINTERS,
KING STREET.

1854.

1854
(57)

59780

BURLINGTON BAY BOAT CLUB,

Established in 1854.

Patrons.

ROBERT W. HARRIS, Esq.,
C. J. BRYDGES, Esq.,
ISAAC BUCHANAN, Esq.,
R. JUSON, Esq.,
SIR ALLAN MACNAB,
H. MCKINSTRY, Esq.,
W. P. MACLAREN, Esq.,
G. S. TIFFANY, Esq.,

President.

W. K. MUIR, Esq.

Treasurer.

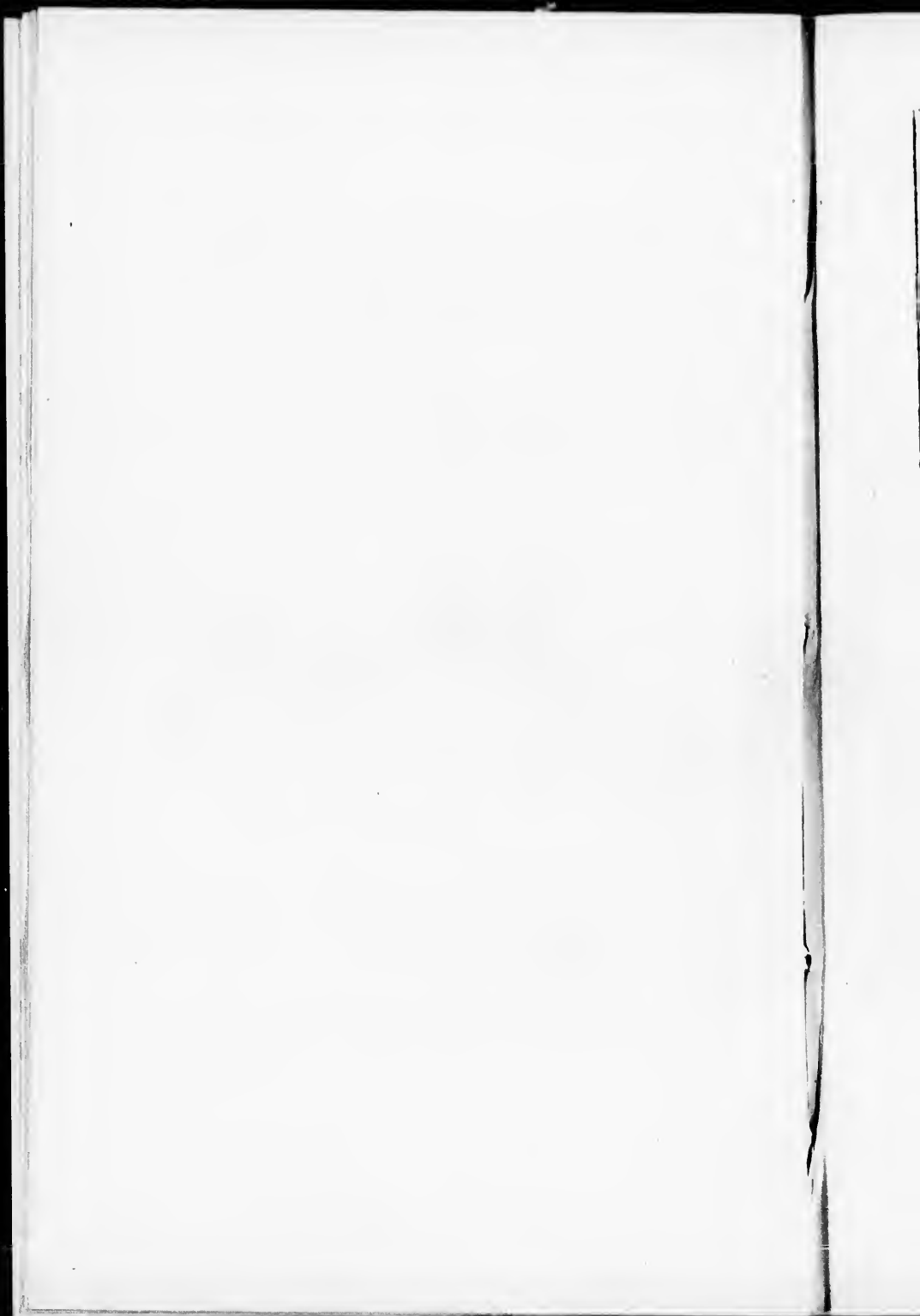
WM. KNAPP HENDERSON, Esq.

Secretary.

GEORGE HERVE MINGAYE, Esq.

List of Committee.

GEORGE LOWE REID, Esq.,
DANIEL C. GUNN, Esq.,
CAPTAIN CADDY,
ROBERT HORATIO G. MINTY, Esq.,
GEORGE DARTNELL, Esq.



Rules and Regulations.

I.—That this Club shall consist of a President, Treasurer, and Secretary, and such number of Members as shall, from time to time be agreed upon.

II.—That the control of the Club shall be vested in a Committee of Management, to be composed of the President, Treasurer, Secretary and five other members of the Club ; and that such Committee shall have power to make new By-laws for the government of the Club; and to determine upon the election of all new members. The President, in all cases, to have the casting vote.

III.—That the members of the Club shall be chosen by ballot. Two black balls shall disqualify an applicant.

IV.—That the Entrance Fee to this Club shall be \$15, payable on election ; and the annual subscription to be \$4, payable on the 1st of May.

V.—That the minimum subscription of \$4 per annum shall constitute an honorary member of this Club.

VI.—That any member desiring to retire from the Club must signify his intention in writing to the Secretary, on or before the 25th of April in each year. In the event of his omitting to do so, he will be considered a member and his subscription become due accordingly.

VII.—That the members of this Club shall consist entirely of *employe's* of the Great Western Railway Company.

VIII.—That all members whose subscriptions shall be unpaid on the 31st of May in every year, shall be written to for payment; and all whose subscriptions shall remain unpaid by the 30th of June, shall be disqualified from taking any part in the Club, until their subscriptions be paid.

IX.—That the accounts of the Club shall be audited in the 1st week of October, by two members (not being members of the Committee), to be appointed for that purpose, at a General Meeting of the Club.

X.—That the annual General Meeting of the Club shall be held on the 15th of October, (of which ten days' notice shall be given to

every member), for receiving the Treasurer's accounts of the receipts and disbursements, and for general business ; and that any alterations proposed to be made in the Rules and Regulations shall be communicated one week prior to such meeting.

XI.—That the Season shall commence on the 1st of May, and that the Club shall continue to meet on every Tuesday and Friday until the 31st of October.

XII.—That the crew of the boat shall select their own Captain for the time being, and all members of the crew will be expected to obey him most implicitly ; in the event of a refusal, a fine of 10s. cy., will be most rigidly enforced.

XIII.—That a committee nominated at a General Meeting be empowered to make all such arrangements, with reference to buying of boats, &c., general expenses and concerns of the Club, as are not specially mentioned in the foregoing Rules.

XIV.—That the power of arranging matches be vested in the Committee ; but that such matches shall not take place on either of the Club Days, if they can be arranged otherwise.

XV.—That if any member should be selected to row in a match, and shall have consent-

ed, but shall not appear at the proper time, he shall be fined 10s. cy, unless he shall give four days' notice, to the Secretary, of his inability to attend ; but the Committee shall have power to remit this fine, if it be made to appear, to their satisfaction, that the absence of any member so selected was unavoidable.

XVI.—That all members be requested to appear in Boating costume—viz., white or flannel trousers, pink jerseys, straw hats with ribbon, with a black neck-tie.

XVII.—That the use of fire-arms is strictly prohibited by any member of this Club during the time such member shall be in the boat.

XVIII.—That the foregoing Rules and Regulations be printed and circulated throughout the Club ; and that each member do signify his assent to the same, by signing a copy thereof in the Club Book.

GEORGE HERVE MINGAYE,
Secretary.

780

