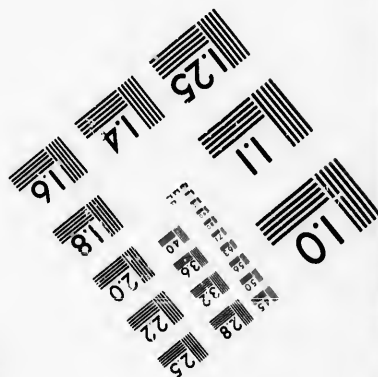
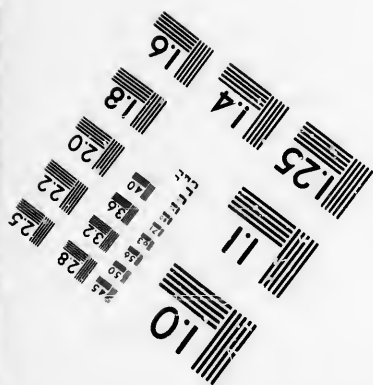
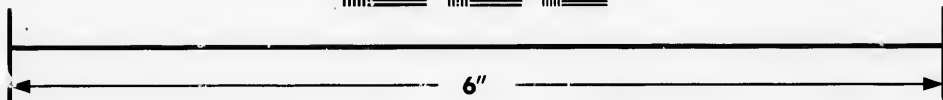
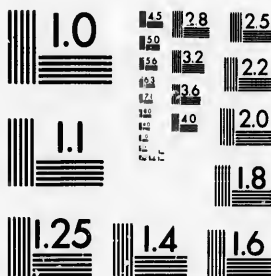


**IMAGE EVALUATION  
TEST TARGET (MT-3)**



**Photographic  
Sciences  
Corporation**

23 WEST MAIN STREET  
WEBSTER, N.Y. 14580  
(716) 872-4503

18  
20  
22  
25  
28  
32  
36

**CIHM/ICMH  
Microfiche  
Series.**

**CIHM/ICMH  
Collection de  
microfiches.**



Canadian Institute for Historical Microreproductions / Institut canadien de microreproductions historiques

10  
15  
20  
25

**© 1985**

Technical and Bibliographic Notes/Notes techniques et bibliographiques

The Institute has attempted to obtain the best original copy available for filming. Features of this copy which may be bibliographically unique, which may alter any of the images in the reproduction, or which may significantly change the usual method of filming, are checked below.

L'Institut a microfilmé le meilleur exemplaire qu'il lui a été possible de se procurer. Les détails de cet exemplaire qui sont peut-être uniques du point de vue bibliographique, qui peuvent modifier une image reproduite, ou qui peuvent exiger une modification dans la méthode normale de filmage sont indiqués ci-dessous.

- |  |  |
|--|--|
| <input checked="" type="checkbox"/> Coloured covers/<br>Couverture de couleur  | <input type="checkbox"/> Coloured pages/<br>Pages de couleur   |
| <input type="checkbox"/> Covers damaged/<br>Couverture endommagée  | <input type="checkbox"/> Pages damaged/<br>Pages endommagées   |
| <input type="checkbox"/> Covers restored and/or laminated/<br>Couverture restaurée et/ou pelliculée  | <input type="checkbox"/> Pages restored and/or laminated/<br>Pages restaurées et/ou pelliculées  |
| <input type="checkbox"/> Cover title missing/<br>Le titre de couverture manque   | <input checked="" type="checkbox"/> Pages discoloured, stained or foxed/<br>Pages décolorées, tachetées ou piquées   |
| <input type="checkbox"/> Coloured maps/<br>Cartes géographiques en couleur   | <input checked="" type="checkbox"/> Pages detached/<br>Pages détachées   |
| <input type="checkbox"/> Coloured ink (i.e. other than blue or black)/<br>Encre de couleur (i.e. autre que bleue ou noire)   | <input checked="" type="checkbox"/> Showthrough/<br>Transparence   |
| <input type="checkbox"/> Coloured plates and/or illustrations/<br>Planches et/ou illustrations en couleur  | <input type="checkbox"/> Quality of print varies/<br>Qualité inégale de l'impression   |
| <input type="checkbox"/> Bound with other material/<br>Relié avec d'autres documents   | <input type="checkbox"/> Includes supplementary material/<br>Comprend du matériel supplémentaire   |
| <input type="checkbox"/> Tight binding may cause shadows or distortion<br>along interior margin/<br>La reliure serrée peut causer de l'ombre ou de la<br>distorsion le long de la marge intérieure   | <input type="checkbox"/> Only edition available/<br>Seule édition disponible   |
| <input type="checkbox"/> Blank leaves added during restoration may<br>appear within the text. Whenever possible, these<br>have been omitted from filming/<br>Il se peut que certaines pages blanches ajoutées<br>lors d'une restauration apparaissent dans le texte,<br>mais, lorsque cela était possible, ces pages n'ont<br>pas été filmées. | <input type="checkbox"/> Pages wholly or partially obscured by errata<br>slips, tissues, etc., have been refilmed to<br>ensure the best possible image/<br>Les pages totalement ou partiellement<br>obscurcies par un feuillet d'errata, une pelure,<br>etc., ont été filmées à nouveau de façon à<br>obtenir la meilleure image possible. |
| <input type="checkbox"/> Additional comments:/<br>Commentaires supplémentaires:  |  |

This item is filmed at the reduction ratio checked below/  
Ce document est filmé au taux de réduction indiqué ci-dessous.

10X	14X	18X	22X	26X	30X
<input type="checkbox"/>	<input type="checkbox"/>	<input checked="" type="checkbox"/>	<input type="checkbox"/>	<input type="checkbox"/>	<input type="checkbox"/>
12X	16X	20X	24X	28X	32X

The copy filmed here has been reproduced thanks to the generosity of:

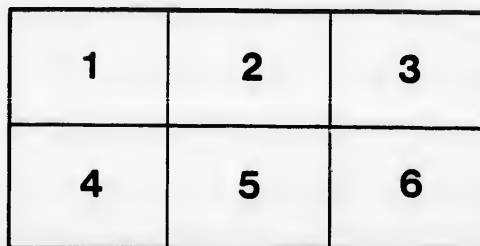
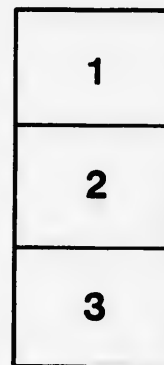
Législature du Québec  
Québec

The images appearing here are the best quality possible considering the condition and legibility of the original copy and in keeping with the filming contract specifications.

Original copies in printed paper covers are filmed beginning with the front cover and ending on the last page with a printed or illustrated impression, or the back cover when appropriate. All other original copies are filmed beginning on the first page with a printed or illustrated impression, and ending on the last page with a printed or illustrated impression.

The last recorded frame on each microfiche shall contain the symbol  $\rightarrow$  (meaning "CONTINUED"), or the symbol  $\nabla$  (meaning "END"), whichever applies.

Maps, plates, charts, etc., may be filmed at different reduction ratios. Those too large to be entirely included in one exposure are filmed beginning in the upper left hand corner, left to right and top to bottom, as many frames as required. The following diagrams illustrate the method:



L'exemplaire filmé fut reproduit grâce à la générosité de:

Législature du Québec  
Québec

Les images suivantes ont été reproduites avec le plus grand soin, compte tenu de la condition et de la netteté de l'exemplaire filmé, et en conformité avec les conditions du contrat de filmage.

Les exemplaires originaux dont la couverture en papier est imprimée sont filmés en commençant par le premier plat et en terminent soit par la dernière page qui comporte une empreinte d'impression ou d'illustration, soit par le second plat, selon le cas. Tous les autres exemplaires originaux sont filmés en commençant par la première page qui comporte une empreinte d'impression ou d'illustration et en terminent par la dernière page qui comporte une telle empreinte.

Un des symboles suivants apparaîtra sur la dernière image de chaque microfiche, selon le cas: le symbole  $\rightarrow$  signifie "A SUIVRE", le symbole  $\nabla$  signifie "FIN".

Les cartes, planches, tableaux, etc., peuvent être filmés à des taux de réduction différents. Lorsque le document est trop grand pour être reproduit en un seul cliché, il est filmé à partir de l'angle supérieur gauche, de gauche à droite, et de haut en bas, en prenant le nombre d'images nécessaire. Les diagrammes suivants illustrent la méthode.

6

A CLASSIFIED CATALOGUE

OF THE

BIRDS OF CANADA;

INCLUDING

EVERY SPECIES KNOWN TO VISIT THE SEVERAL  
PROVINCES WHICH NOW FORM THE  
DOMINION OF CANADA.

BY

ALEXANDER MILTON ROSS,

M.A., M.D., M.R.S.L., ENG.,

MEMBER OF THE ENTOMOLOGICAL SOCIETIES OF ENGLAND, BELGIUM, AND  
CANADA; CORRESPONDING MEMBER OF THE ZOOLOGICAL SOCIETY OF  
ENGLAND; MEMBER OF THE LINNEAN SOCIETY OF BELGIUM,  
ETC., ETC.

---

TORONTO :

ROWSSELL & HUTCHISON.

1872.



A CLASSIFIED CATALOGUE  
OF THE  
BIRDS OF CANADA;

INCLUDING

EVERY SPECIES KNOWN TO VISIT THE SEVERAL  
PROVINCES WHICH NOW FORM THE  
DOMINION OF CANADA.

BY

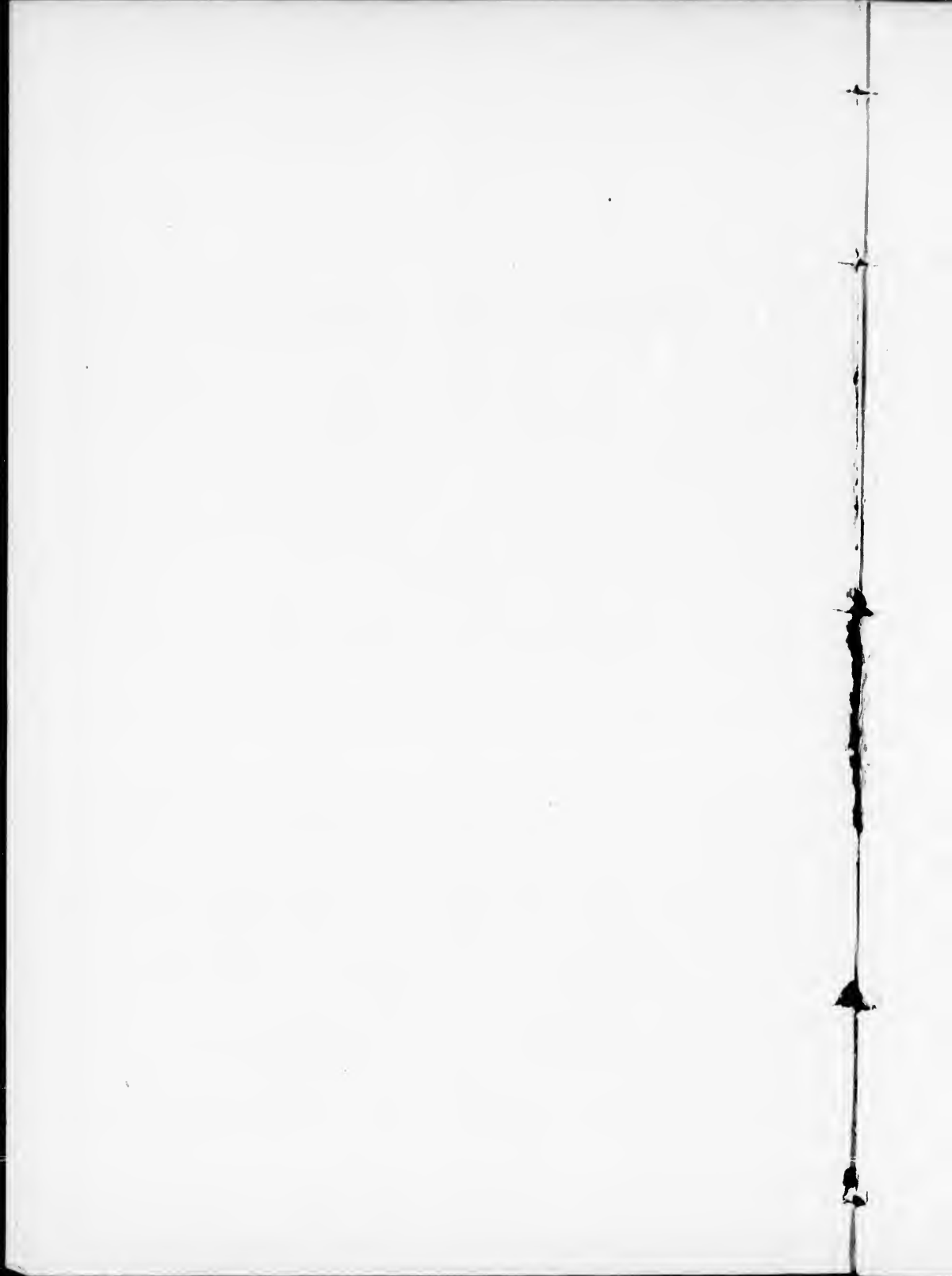
ALEXANDER MILTON ROSS,

M.A., M.D., M.R.S.L., ENG.,

MEMBER OF THE ENTOMOLOGICAL SOCIETIES OF ENGLAND, BELGIUM, AND  
CANADA; CORRESPONDING MEMBER OF THE ZOOLOGICAL SOCIETY OF  
ENGLAND; MEMBER OF THE LINNEAN SOCIETY OF BELGIUM,  
ETC., ETC.

---

TORONTO :  
ROWSSELL & HUTCHISON.  
1872.





CLASSIFIED CATALOGUE  
OF THE  
BIRDS OF CANADA.

---

ORDER I.—RAPTORES.

<p>Falco anatum.            " columbarius.            " vulgaris.            Tinnunculus sparverius.            Astur atricapillus.            Accipiter Cooperii.            " fuscus.            Buteo borealis.            " lineatus.            " pennsylvanicus.            Archibuteo lagopus.            " sancti johannis.            Circus hudsonius.            Haliæetus leucocephalus.</p>	<p>Aquila canadensis.            Pandion carolinensis.            Bubo virginianis.            Scops asio.            Otus Wilsonianus.            Brachyotus Cassinii.            Syrniium nebulosum.            " cinereum.            Nyctale Richardsonii.            " acadica.            Nyctea nivea.            Surnia ulula.            Stix cunicularia.            " passerinoides.</p>
--	---

ORDER II.—SCANSORES.

<p>Coccygus americanus.            " erythroptalmus.            Picus villosus.            " pubescens.            " lineatus.            " canadensis.            " Harrissii.            " Gardnerii.            " arcticus.</p>	<p>Picus mexicans.            Picoides arcticus.            " hursutus.            Sphyrapicus varius.            Melanerpes erythrocephalus.            Hylatomus pileatus.            Colaptes auratus.            Centurees carolinensis.</p>
--	--

## ORDER III.—INSESSORES.

Trochilus colubris.	Regulus calendula.
“ Anna.	Regulus satrapa.
“ rufus.	Regulus Cuvieri.
Chetura pelasgia.	Parus atricapillus.
Hirundo americana.	“ minimus.
“ lunifrons.	“ Hudsonicus.
“ riparia.	Sitta carolinensis.
“ bicolor.	“ canadensis.
“ thallasima.	Certhia americana.
Progne purpurea.	Cistothorus palustris.
Caprimulgus vociferus.	Troglodytes hyemalis.
“ carolinensis.	“ ædon.
Chordeiles popetue.	“ obsoletus.
Ceryle alcyon.	“ Parkmanii.
Tyrannus carolinensis.	Mniotilta varia.
Myiarchus crinitus.	Parula americana.
Sayornis fuscus.	Geothlypis trichas.
Contopus virens.	“ philadelphiae.
Empidonax minimus.	“ Macgillivrai.
Turdus mustelinus.	Sylvia trichas.
“ pallassii.	“ Audubonii.
“ fuscescens.	“ Townsendii.
“ Swainsonii.	“ occidentalis.
“ migratorius.	Dendroica virens.
“ nævius.	“ palmarum.
“ nanus.	“ tigrina.
“ montanus.	“ canadensis.
Harporhynchus rufous.	“ coronata.
Galeoscoptes carolinensis.	“ Blackburniæ.
Sialia sialis.	“ castanea.
“ occidentalis.	“ pinus.
“ arctica.	“ p e n n s y l - vanica.

ORDER III.—INSESSORES.—*Continued.*

Dendroica striata.	Curvirostra leucoptera.
“ æstiva.	Ægiothus linaria.
“ maculosa.	Plectrophanes nivalis.
Myiodioctes canadensis.	“ Lapponicus.
“ mitratis.	Passerculus savanna.
“ minutus.	Pooecetes gramineus.
“ pusillus.	Coturniculus passerinus.
Helminthus vermivorus.	Zonotrichia leucophrys.
Helminthopaga pinus.	Zonotrichia albicollis.
“ chrysoptera.	Junco hyemalis.
“ ruficapilla.	Spizella monticola.
Helminthopaga peregrina.	“ pusilla.
Icteria viridis.	Spizella socialis.
Setophaga ruticilla.	Melospiza melodia.
Seiurus aurocapillus.	“ palustris.
“ noveboracensis.	Passerella iliaca.
Pyrrhuloxia rubra.	Emberiza americana.
Ampelis cedrorum.	Guiraca Ludoviciana.
Collyrio borealis.	“ cœrula.
“ excubitorides.	Coccothraustes vespertina.
Vireo olivaceus.	“ cardinalis.
“ gilvus.	“ melanocephalus.
“ noveboracensis.	“ vespertina.
“ flavifrons.	“ cœrula.
“ solitarius.	Cyanospiza cyanea.
Eremophila cornuta.	Pipilo erythrophthalmus.
Pinicola canadensis.	Dolichonyx oryzivorus.
Carpodacus purpureus.	Molothrus pecoris.
Chrysomitris tristis.	Agelaius phœniceus.
“ pinus.	Sturnella magna.
Curvirostra americana.	Icterus spurius.

ORDER III.—INSESSORES.—*Continued.*

Icterus baltimore.	Musicicapæ Trailli.
“ Bullockii.	“ pusilla.
“ xanthrocephalus.	Ptilogonys Townsendii.
Scolecophagus ferrugi- neus.	Cinclus americanus.
Quiscalus versicolor.	Fringilla Townsendii.
Corvus americanus.	“ cinera.
“ corax.	“ Mortonii.
“ Nuttallii.	“ Oregonii.
“ Bullockii.	“ frontalis.
Cyanurus cristatus.	“ bephrocotis.
Perisoreus canadensis.	Enteriza pallida.
Garrulus Stelleri.	“ lapponica.
“ ultramarinus.	“ ornata.
Musicicapæ verticalis.	Spiza amœna.
“ nigricans.	Carduelis psalteri.
“ Phœbe.	Pipilio arcticus.
	Corydalina tricolor.

## ORDER IV.—RASORES.

Ectopistes migratoria.	Tetrao Phasianellus.
Zenaidura carolinensis.	“ urophasimus.
Tetrao canadensis.	“ obscurus.
Bonasa umbellus.	Ortyx virginianus.
Tetrao phasianellus.	“ plumifera.
“ leucurus.	Meleagris gallopavo.
“ rupestris.	Columba fasciata.
“ mutus.	

## ORDER V.—GRALLATORES.

Ardea herodias.	Tringa maritima.
Ardetta exilis.	“ subarquata.
Botaurus lentiginosus.	“ alpina.
Butorides virescens.	“ maculata.
Nyctiardea Gardenii.	“ Wilsonii.
Grus canadensis.	“ Bonapartii.
“ americana.	Calidris arenaria.
Ibis falcinellus.	Ereunetes petrificatus.
Charadrius virginicus.	Micropalma himan-
“ montanus.	topus.
Ægialitis vociferus.	Symphemia semi-pal-
“ Wilsonius.	mata.
“ semi-palmatus.	Gambetta melanoleuca.
“ melodus.	“ flavipes.
“ montanus.	Rhyacophilus solitarius.
Scollopax Drummondii.	Tringoides macularius.
Squatarola helvetica.	Actiturus Bartramius.
Hæmatopus palliatus.	Tringites rufescens.
“ niger.	Limosa fedoa.
“ Townsendii.	“ hudsonica.
Strepsilas interpres.	Numenius longirostris.
“ melanocephala.	“ borealis.
Recurvirostra ameri-	“ hudsonicus.
cana.	Rallus elegans.
Phalaropus hyper-	“ crepitans.
boreus.	“ virginianus.
“ Wilsonii.	Porzana carolina.
“ fulcarius.	“ noveboracensis.
Philohela minor.	“ jamaicensis.
Gallinago Wilsonii.	Crex pratensis.
Macrorhamphusgriseus.	Fulica americana.
“ scolopaceus.	Gallinule martinica.
Tringa canutus.	Aphriza Townsendii.
“ Cooperii.	

## ORDER VI.—NATATORES.

Cygnus americanus.	Somateria spectabilis.
“ buccinator.	Erismatura rubida.
Anser hyperboreus.	Erismatura dominica.
“ Gambelli.	Mergus serrator.
“ frontalis.	“ americanus.
“ Hutchinsii.	Lophodytes cucullatus.
Bernicla canadensis.	Pelicanus fuscus.
“ leucopareia.	“ erythrorhynchus.
“ brenta.	Sula bassana.
Anas boschas.	Graculus carbo.
“ obscura.	“ dilophus.
Dafla acuta.	Phalacrocorax resplendens.
Nettion carolinensis.	“ Townsendii.
Querquedula discors.	Stercorarus parasiticus.
“ cyanoptera.	“ pomarinis.
Spatula clypeata.	Larus marinus.
Chaulelasmus streperus.	“ argentatus.
Mareca americana.	“ Rossii.
Aix sponsa.	“ Franklinii.
Fulix marila.	“ Sabinii.
“ affinis.	“ canus.
“ collaris.	“ leucopterus.
Fuligula despar.	“ delawarensis.
Aythya vallisneria.	“ eberneus.
“ americana.	Creagrus furcatus.
Bucephala islandica.	Chroicocephalus atricilla.
“ albeola.	“ philadelphia.
Histrionicus torquatus.	Rissa tridactyla.
Harelda glacialis.	Sterna aranea.
Melanetta velvetina.	“ caspia.
Pelionetta perspicillata.	“ Wilsonii.
Oidemia americana.	
Somateria mollissima.	

ORDER VI.—NATATORES.—*Continued.*

Sterna arctica.	Alca torda.
“ frenata.	Mergulus alle.
“ fuliginosa.	Mormon arctica.
“ paridisea.	“ glacialis.
Colymbus torquatus.	Uria grylle.
“ septentrio-	“ lomvia.
nalis.	“ ringvia.
Podiceps griseigena.	“ Brunswickii.
“ cristatus.	“ Townsendii.
“ cornutus.	“ occidentalis.
Podilymbus podiceps.	“ antiqua.
Thalassidroma Wilsonii.	Phaleris nodirostris.
“ Leachii.	“ cristaletta.
Puffinus major.	Procellaria tenuiristris.
“ cinereus.	“ pacifica.
“ anglorum.	“ gigantea.
“ obscurus.	Diomedea fusca.
Alca impennis.	“ chlorryhnchus.



