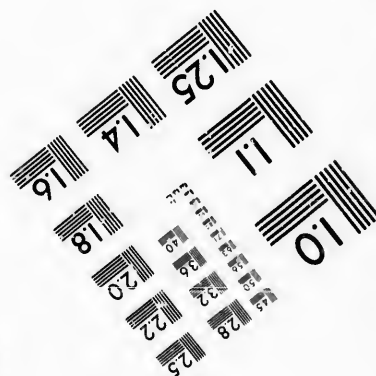
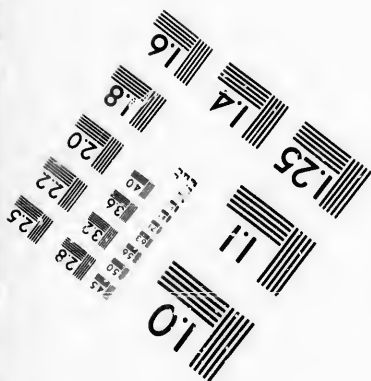
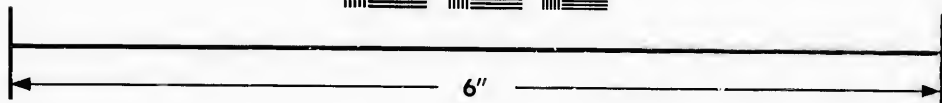
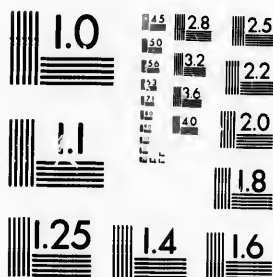


**IMAGE EVALUATION
TEST TARGET (MT-3)**



**Photographic
Sciences
Corporation**

23 WEST MAIN STREET
WEBSTER, N.Y. 14580
(716) 872-4503

**CIHM/ICMH
Microfiche
Series.**

**CIHM/ICMH
Collection de
microfiches.**



Canadian Institute for Historical Microreproductions / Institut canadien de microreproductions historiques

© 1987

Technical and Bibliographic Notes/Notes techniques et bibliographiques

The Institute has attempted to obtain the best original copy available for filming. Features of this copy which may be bibliographically unique, which may alter any of the images in the reproduction, or which may significantly change the usual method of filming, are checked below.

L'Institut a microfilmé le meilleur exemplaire qu'il lui a été possible de se procurer. Les détails de cet exemplaire qui sont peut-être uniques du point de vue bibliographique, qui peuvent modifier une image reproduite, ou qui peuvent exiger une modification dans la méthode normale de filmage sont indiqués ci-dessous.

- | | |
|--|--|
| <input checked="" type="checkbox"/> Coloured covers/
Couverture de couleur | <input type="checkbox"/> Coloured pages/
Pages de couleur |
| <input type="checkbox"/> Covers damaged/
Couverture endommagée | <input type="checkbox"/> Pages damaged/
Pages endommagées |
| <input type="checkbox"/> Covers restored and/or laminated/
Couverture restaurée et/ou pelliculée | <input type="checkbox"/> Pages restored and/or laminated/
Pages restaurées et/ou pelliculées |
| <input type="checkbox"/> Cover title missing/
Le titre de couverture manque | <input checked="" type="checkbox"/> Pages discoloured, stained or foxed/
Pages décolorées, tachetées ou piquées |
| <input type="checkbox"/> Coloured maps/
Cartes géographiques en couleur | <input type="checkbox"/> Pages detached/
Pages détachées |
| <input type="checkbox"/> Coloured ink (i.e. other than blue or black)/
Encre de couleur (i.e. autre que bleue ou noire) | <input checked="" type="checkbox"/> Showthrough/
Transparence |
| <input checked="" type="checkbox"/> Coloured plates and/or illustrations/
Planches et/ou illustrations en couleur | <input type="checkbox"/> Quality of print varies/
Qualité inégale de l'impression |
| <input type="checkbox"/> Bound with other material/
Relié avec d'autres documents | <input type="checkbox"/> Includes supplementary material/
Comprend du matériel supplémentaire |
| <input type="checkbox"/> Tight binding may cause shadows or distortion
along interior margin/
La reliure serrée peut causer de l'ombre ou de la
distorsion le long de la marge intérieure | <input type="checkbox"/> Only edition available/
Seule édition disponible |
| <input type="checkbox"/> Blank leaves added during restoration may
appear within the text. Whenever possible, these
have been omitted from filming/
Il se peut que certaines pages blanches ajoutées
lors d'une restauration apparaissent dans le texte,
mais, lorsque cela était possible, ces pages n'ont
pas été filmées. | <input type="checkbox"/> Pages wholly or partially obscured by errata
slips, tissues, etc., have been refilmed to
ensure the best possible image/
Les pages totalement ou partiellement
obscurcies par un feuillet d'errata, une pelure,
etc., ont été filmées à nouveau de façon à
obtenir la meilleure image possible. |
| <input type="checkbox"/> Additional comments:/
Commentaires supplémentaires: | |

This item is filmed at the reduction ratio checked below/
Ce document est filmé au taux de réduction indiqué ci-dessous.

10X	12X	14X	16X	18X	20X	22X	24X	26X	28X	30X	32X
						/					

The copy filmed here has been reproduced thanks to the generosity of:

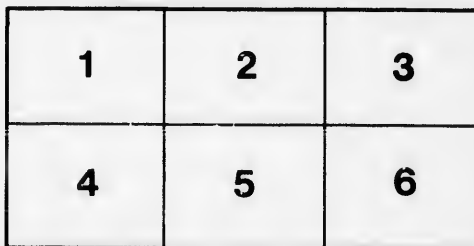
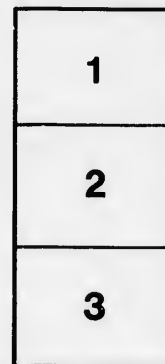
Harriet Irving Library
University of New Brunswick

The images appearing here are the best quality possible considering the condition and legibility of the original copy and in keeping with the filming contract specifications.

Original copies in printed paper covers are filmed beginning with the front cover and ending on the last page with a printed or illustrated impression, or the back cover when appropriate. All other original copies are filmed beginning on the first page with a printed or illustrated impression, and ending on the last page with a printed or illustrated impression.

The last recorded frame on each microfiche shall contain the symbol \rightarrow (meaning "CONTINUED"), or the symbol ∇ (meaning "END"), whichever applies.

Maps, plates, charts, etc., may be filmed at different reduction ratios. Those too large to be entirely included in one exposure are filmed beginning in the upper left hand corner, left to right and top to bottom, as many frames as required. The following diagrams illustrate the method:



L'exemplaire filmé fut reproduit grâce à la générosité de:

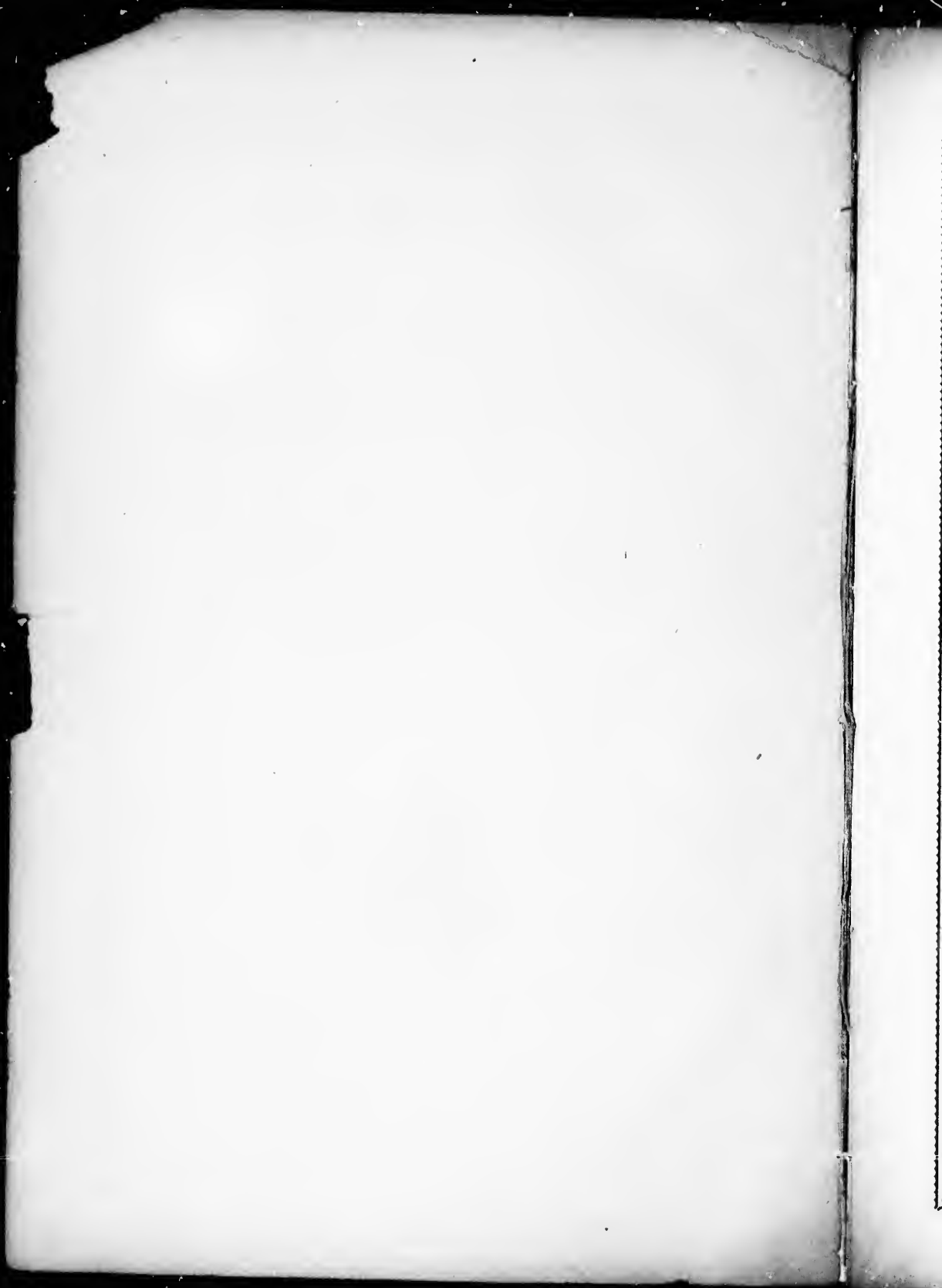
Harriet Irving Library
University of New Brunswick

Les images suivantes ont été reproduites avec le plus grand soin, compte tenu de la condition et de la netteté de l'exemplaire filmé, et en conformité avec les conditions du contrat de filmage.

Les exemplaires originaux dont la couverture en papier est imprimée sont filmés en commençant par le premier plat et en terminant soit par la dernière page qui comporte une empreinte d'impression ou d'illustration, soit par le second plat, selon le cas. Tous les autres exemplaires originaux sont filmés en commençant par la première page qui comporte une empreinte d'impression ou d'illustration et en terminant par la dernière page qui comporte une telle empreinte.

Un des symboles suivants apparaîtra sur la dernière image de chaque microfiche, selon le cas: le symbole \rightarrow signifie "A SUIVRE", le symbole ∇ signifie "FIN".

Les cartes, planches, tableaux, etc., peuvent être filmés à des taux de réduction différents. Lorsque le document est trop grand pour être reproduit en un seul cliché, il est filmé à partir de l'angle supérieur gauche, de gauche à droite, et de haut en bas, en prenant le nombre d'images nécessaire. Les diagrammes suivants illustrent la méthode.



A GENEALOGICAL CHART

OF THE MALE DESCENDANTS OF

ALLEN PERLEY,

COMPILED AND PUBLISHED BY

Geo. Augustus Perley,

(SON OF SOLOMON, OF THE 6TH GENERATION.)



Ap Perley

FREDERICTON, NEW BRUNSWICK, DOMINION OF CANADA.

MAY, 1877.

TO
Charles Perley, Esq.

New York City, New York.

MY DEAR COUSIN,

I have much pleasure in now sending forth my second printed "Genealogical Chart" of the Male Descendants of OUR WIDE-SPREAD FAMILY, and which I take the liberty of dedicating to you. Although I have bestowed much research and labor upon it, and have added about Four Hundred additional names to the Chart published in 1873, still, I know it is not yet perfect. You will observe some blanks that require to be filled up,—the descendants of these families I have not yet been able to find.

I trust that you, and all the descendants of ALLEN PERLEY, will accept of it in as fraternal a spirit as it is now tendered to you; and wherein you find errors or omissions, or can furnish me with any clue to those lost tribes that have wandered wide, you will confer a favor by informing me. Thanking you kindly for the *valuable assistance* rendered, and cheering encouragement given me,—with all others who have in any measure contributed valuable information towards this work,—

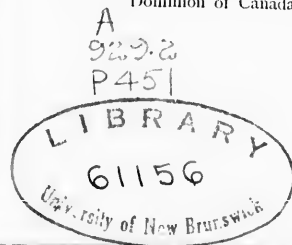
Believe me to be,

Yours ever truly,

GEORGE AUGUSTUS PERLEY.

FREDERICTON, NEW BRUNSWICK,

Dominion of Canada, May 23d, 1877.



12/51

(2)

MR. ALLEN PERLEY,

A native of WALES, in England, emigrating to New England, arrived at Charlestown, near Boston, on the 12th day of July, 1630. From thence he removed, and settled at IPSWICH in 1634; and the year following he married MRS. SUSANNA BOKESON, by whom he had four sons, whose names are exhibited in the adjacent column, and their male descendants in the succeeding columns, from one generation to another, amounting to nine generations.

1ST GENERATION.	2D GENERATION.	3D GENERATION.	4TH GENERATION.		
JOHN.*	Sons of John.	JOHN. SAMUEL. THOMAS. NATHANIEL. ISAAC. JEREMIAH.	Sons of Thomas. Amos. Jeremiah.	Sons of Amos. Amos. Nathan. Enoch. Stephen.	
		Son of Isaac.	John.	Sons of John. Nathaniel. Jacob.	
SAMUEL.	Sons of Samuel.	JOHN. SAMUEL.	Sons of John. Jonathan. Samuel.	Sons of Samuel. Samuel. John. Nathaniel. Abraham.	
		Son of Samuel.	David.	Son of David. John.	
THOMAS.	Sons of Thomas.	THOMAS.	Sons of Thomas. Thomas. Allen.	Sons of Thomas. Israel. Oliver. Thomas. Enoch. Aaron.	
		Son of Thomas.	Asa.	Sons of Asa. Dudley. Asa. Eliphalet. Allen. Eliphalet. Allen. Daniel. Henry. Samuel. Solomon.	
		Son of Thomas.	Jacob.	Sons of Jacob. Isaac. Jacob. Benjamin. John.	
		Son of Thomas.	Nathan.	Sons of Nathan. John. Nathan.	
		Son of Thomas.	JACOB.	Sons of Jacob. Francis.	Sons of Francis. William. Francis. Amos. Jacob.
		Son of Thomas.	Moses.	Sons of Moses. Moses. Stephen. Jeremiah. Nathan. Peter. Moody. Eliphalet.	
TIMOTHY.	Sons of Timothy.	STEPHEN. JOSEPH. ALLEN.	Son of Stephen. Allen.	Sons of Allen. Allen John. Stephen. Jacob.	

* JOHN was the first male child born of European parents in the Town of Ipswich, Mass., U. S., 1636.

DESCENDANTS OF JOHN.—Continued.

4TH GENERATION.	5TH GENERATION.	6TH GENERATION.	7TH GENERATION.	8TH GENERATION.	9TH GENERATION.
Amos.	Amos.	Charles. Greenleaf. Amos Proctor.	Son of Charles.	Thomas.	
Nathan.	Jesse.	Nathaniel. Frederick.	Sons of Amos P. Frederick.	Charles. Wallace. Greenleaf.	
Enoch.	Nathaniel.	Francis.	Sons of Francis.	William.	
Stephen.	Sons of Nathaniel.	Jesse. Anril.	Sons of Jesse.	Osgood. Dean. John. Nathaniel.	Son of Osgood. Son of Dean. Sons of John.
Nathaniel.	Francis.	George. Richard.	Son of Jesse.	Eugene. Wallace. Francis. Augustus.	Son of Eugene.
Jacob.	Israel.	Haskell. Artemas Ward. Putnam. Samuel Holten. Edwin. Charles Greenleaf.	Sons of Nathaniel. Sons of Artemas W.	Edward.	William.

DESCENDANTS OF SAMUEL. — Continued.

4TH GEN.	5TH GENERATION.	6TH GENERATION.	7TH GENERATION.	8TH GENERATION.	9TH GENERATION.
Son of Samuel.	Samuel.	David I.	Sons of David L.	William Sumner.	
		Isaac.	Sons of Samuel.	Osborn.	
Sons of Samuel.	Nathaniel.	Luther L.	Son of Isaac.	David Fowler.	
		William.	Son of Luther.	Osborn Potter.	
		Nathaniel.	Sons of William.	Geo. Parsons.	
		Ulmer.		Chas. Osborn.	
Sons of Samuel.	Nathaniel.	Sylvester.	Sons of Nathaniel.	Peleg S.	Bruce.
		George.		John A.	Son of Peleg S.
Sons of Samuel.	Abraham.	John H.	Sons of George.	Samuel F.	Howard.
		Nathaniel.		George. Cyrus J.	Son of John A.
Sons of Samuel.	Isaac.	Joseph H.	Sons of John H.	George. Roscoe.	Geo. Martin.
		Thomas.	Sons of Abraham.	Martin.	Sons of Roscoe.
Sons of Samuel.	Isaac.	Isaac.	Sons of Nathaniel.	Albion. John.	Summer Pennell.
		Cephas.		Howard. Alvin.	
Sons of Samuel.	Isaac.	George Washington.	Sons of George.	William W. Hervey S.	
		Cephas.		Frederick Augustus.	
Sons of Samuel.	Isaac.	Alvah S.	Sons of Nathaniel.	William H. Harry O.	
		Joseph H.	Sons of Jonas H.	Clayton J. Samuel S.	
Sons of Samuel.	Isaac.	Alvah S.	Sons of Joseph H.	Arthur P. Hugh S.	
		Joseph H.	Son of Isaac.	Alvah S.	
Sons of Samuel.	Isaac.	Joseph H.		Joseph H.	
		Thomas.		Henry.	
Sons of Samuel.	Isaac.	George Washington.		Alvin H.	
		Cephas.			

DESCENDANTS OF SAMUEL. — Continued.

4TH GEN.	5TH GENERATION.	6TH GENERATION.	7TH GENERATION.	8TH GENERATION.	9TH GENERATION.
John.	Sons of John.	Nathaniel M.	Nathaniel Mighill.		
	John.	John Legard. Amos Pettingill.			
Nathaniel.	Sons of Ebenezer.	Nathaniel.	Sons of John.	George. Moses. John. Samuel	John.
		George. James. Ebenezer.	Sons of James.	Edwin. Benjamin. William E.	James Vincent. John William. Charles Moses.
	Ebenezer.		Sons of Samuel.	James P. Samuel. Frank. S. Todd.	Frank. Herbert. Glenie S. Charles.
Abraham.	Sons of Nathaniel.	Samuel.	Samuel.	Edward. Charles.	Charles.
		John.	Charles.	Joseph L. William B. John K. Henry C. Hamilton F. William H. S.	Edward. Lincoln. William. Joseph. Geo. Allen. Charles H. Henry C. C. Norwood.
	John.	Eastace B.	Sons of Charles.		
John.	Sons of John.	Samuel.	Samuel. Stephen. Perkins.		
		Moses. David.	John.	Sons of John.	James McGuire.
	John.	John.	David Erie.	Sons of David E.	John. Wyman. Ernest.

John.	David.	David Isaac.	David E.	Ernest.
-------	--------	--------------	----------	---------

DESCENDANTS OF THOMAS. — Continued.

4TH G.		5TH G.		6TH GENERATION.		7TH GENERATION.		8TH GENERATION.		9TH GENERATION.	
				Charles.	Sons of Israel.	Daniel.	Sons of Daniel.	William Frederick.	Son of Wm. F.	Frederick	Nelles.
				Tisdale.	Sons of Charles S.	Charles.		Alfred Daniel.			
				Charles S.		William.	Sons of Charles.	Allen.			
				Francis P.	Sons of Charles.	Thomas.		Thomas.			
				Charles.		Allan McNabb,	Sons of Thomas.	Frederick Thomas.			
				George S.		John Howard.		Charles Strange.			
				Thomas E.	Sons of George S.	Charles Allen.	John B.				
				George Asa.	Sons of Thomas.	Walter Charles A.					
				James E.		John William.		Walter Frederick.			
				Enoch Allen.	Sons of Thomas.	John Allen.	Wallace.	Frank Dow.			
				Geo. Augustus.		Henry E. Solomon.					
				Frederick Allen.	Sons of James E.	Charles James Allen.					
					Sons of George A.	Frederick George.		Frederick.			
				Wm. Edward.		Geo. Augustus.		George Edwin.			
				Duncan W.	Sons of William E.	Moses C. Henry Allen.					
					Sons of William.	William Dell.					
						Thomas George A.		James Edward.			
						Duncan W.		Arthur Allen.			
						Daniel Edward.		Edward Ernest.			
						George Hayward.		William Edward.			

* Emigrated from Boxford, Mass., and settled on the St. John River, Province of New Brunswick, about A. D. 1760.
 † ISRAEL was the first male child born of European parents on the St. John River at Maugerville, Sunbury County, N. B., January 10th, A. D. 1765.

DESCENDANTS OF THOMAS. — Continued.

4TH.	5TH GENERATION.	6TH GENERATION.	7TH GENERATION.	8TH GENERATION.	9TH GENERATION.
* Oliver	Daniel.	Sons of Daniel	Oliver, John.	Son of Israel.	
	Moses.		William.	John.	
Thomas.	Thomas.	Sons of Moses	George, Israel, Frederick A.	Albert, Thomas, Henry, Lewis.	
	Allen.		Charles, Moses H.	Henry Fullerton, George Hayward, William Colebrook, Arthur Blackwood.	Sons of Henry F. Norman Allen, Geo. E. Henry M.
John.	John.	Sons of John.	Augustus, John P., Frederick.	Frederick A. George P.	Sons of George S. Henry St. George, Harold.
	Thomas.	Sons of Thomas.	Thomas F. Enoch, Samuel F., Henry E., George M.	Enoch, George Allen.	
Aaron.	John, Israel, Enoch, Asa, Enoch, Thomas.	Sons of Israel	Augustus.	Thos. Augustus, Isaac S. C.	
	John, Dudley, Asa, Abraham, Thomas, Henry.	Sons of Dudley	Benjamin Dudley, John.	Benjamin Dudley, John Milton, John Roscoe, Robert.	Son of Isaac S. C. Thomas Edwin.

* Emigrated from Bosford, Mass., and settled on the St. John River, Province of New Brunswick, about A. D. 1760.

DESCENDANTS OF THOMAS. — Continued.

4TH.	5TH GENERATION.	6TH GENERATION.	7TH GENERATION.	8TH GENERATION.	9TH GENERATION.
Asa.	Son of Asa.	Dudley.	Sons of Dudley.	Edward, Dudley Herbert. Asa Harvey.	
Amos.	Son of Amos.	Thomas H.	Sons of Thos. H.	Charles, William, Thomas.	
Dudley.	Sons of Dudley.	Nathaniel. Alexander.	Sons of Asa.	Dudley B. Asa A. James B. Philip B. Nathaniel W.	Asa A. Son of Philip B.
Nathaniel.		Asa. Dudley.	Sons of Dudley.	Dudley, Thomas H. Alexander F. James W.	
Putnam. Eliphalet. Asa.		Amos. William.	Sons of Amos.	Daniel, Alexander. John T. Amos.	
Allen.	Sons of David.	David, Adam. Hiram. Asa. Henry.			
David.	Sons of Asa.	Asa P. Chas. A. Wm. P. Geo. Allen. Jas. Munroe. Francis W. Theophilus P. Leander A. Lewis S.			
Asa.		John W.	Son of John W.	Edward John.	
Daniel. Frederick Porter.	Son of Daniel.	Albert, Charles. Osmore, Henry E.	Sons of Albert.	Albert, Samuel A. Charles, Henry.	
Henry.	Sons of Henry.	George.			
Samuel. Leonard.	Son of Samuel. Son of Leonard.	Leonard Augustus.			

† Solomon, Samuel, Henry, Daniel, Allen, Eliphalet, Allen, Eliphalet, * Asa.

* Settled on the St. John River, New Brunswick, about A. D. 1765.

† Settled on the St. John River, New Brunswick, about A. D. 1785.

am'.	5TH GENERATION	6TH GENERATION	7TH GENERATION	8TH GENERATION	9TH GENERATION
mucl.					
ra.					
	Sons of Ira.	Allen, Walter, Henry.			

DESCENDANTS OF THOMAS. Continued.

DESCENDANTS OF THOMAS. -- Continued.

4TH.	5TH GENERATION.	6TH GENERATION.	7TH GENERATION.	8TH GENERATION.	9TH GENERATION.
John.	John.	John.	David F. John L. James H. Samuel, Adoniram.	Son of David F. John A.	
James.	David.	David.	David M.	Sons of David M. Moses P. Walter E.	
Nathan.	Nathan.	Nathan.	Hen. Alb. Nath'n. Eph. Osm'd.	Sons of Henry. Frank. Fred. Albert.	
Joseph.	Hezekiah.	Hezekiah.	John M. Osmond.	Sons of John M. Arthur. Albert. Edw'd. Osmond. Harold.	
Edmond.	Jesse Nye.	Jesse Nye.	Samuel. Edward.	Sons of Edward. Allen. Ormond.	
Amos.	Anson.	Anson.	J. Edson. Josiah R. Anson W. Edmond S. Herbert S. Van E.		
Asa.	Edward.	Edward.	Ed. B. Corliss C. Her. A. Ch. W.	Son of James A. W. Eugene.	
Daniel.	William.	William.	James A. William Henry. Warren. Eugene.	Son of Wm. H. William S.	
William.	James. Samuel.	James. Samuel.	Varnum. Henry.	Sons of Chancey. Jas. Burt. William.	
	Corliss. Thomas.	Corliss. Thomas.	Jas. Chancey. Moses. Proctor.		
	Moses. Varnum.	Moses. Varnum.	Corliss. Henry.		
	Franklin. Edmond F.	Franklin. Edmond F.	George Edmond.		
	Asbury Fisk.	Asbury Fisk.	Ben Frank.		
	Ino T. Nath'n T. Jas. P. Esmond F. P. Hen. M.	Ino T. Nath'n T. Jas. P. Esmond F. P. Hen. M.	Frank Clifton.		
	Humphrey. Mighill.	Humphrey. Mighill.	Edward Everett. Louis H.		
	William. Pinkney. Putnam.	William. Pinkney. Putnam.			
	Phineas. Phineas.	William. Phineas.	William.		
	Joseph. Nath'n.	Joseph. Nath'n.	Augustus. William.		

DESCENDANTS OF THOMAS.—Continued.

4TH GENERATION.	5TH GENERATION.	6TH GENERATION.	7TH GENERATION.	8TH GENERATION.	9TH GEN.	
William.	Abraham. Oliver. Abraham. William.	Sons of Oliver. S. of Abin Sons of William.	Oliver, Daniel. Luther D. Abraham A. Rodney, G. Abraham, Alexander, Leveritt. William, Humphrey, Dan. S. Amos, Francis.	S. of Ol. S. of A. A. S. of R. G. S. of Wm. S. of D. S.	Lyman, Lewis. Foster. Wintrop. William. William S.	
Francis.	Francis, Eben. P. Jas. Ed. Payson, William.	Son of Eben, P. Sons of James.	Nathaniel Mighill. James Edward.			
Amos.	Amos. Israel. Frederick. Jacob, Jonathan.	Sons of Amos. Sons of Israel. Sons of Frederick. Sons of Jacob.	Zenas, Amos. Israel Put. John C. Geo. Hen. John Fred. Geo. S. Jas. Put m. Jacob Samuel.			
Jacob.	Jeremiah. Nathan. Samuel. Francis, Putnam.	Sons of Jeremiah. Sons of Nathan. Sons of Francis. Sons of Putnam.	Jonathan, William H. William Henry. Nathan, Theophilus. Nathan, Samuel, Moody. J. Putnam, Enoch, Francis. Samuel, Geo. H. John Putnam.	Sons of Jonathan. Sons of Wm. H. Sons of Enoch. Sons of Francis.	Edward Lee. Chas. Osmond. Ed. Howard.	
Moses. Stephen. Jeremiah. Nathan. Peter, Moody. Eliphalet.	Moses, Jeremiah. Nathan, Moody, Life. Moses, Jeremiah. Moody, Hiram, Moody. Stephen, Leander.	Sons of Moses.				

DESCENDANTS OF TIMOTHY.—Continued.

4TH GENERATION.	5TH GENERATION.	6TH GENERATION.	7TH GENERATION.	8TH GENERATION.	9TH GEN.

Moses, Stephen, Jeremiah, Nathan, Peter, Moody, Eliphalet.	Moses, Jeremiah, Nathan, Moody, Life, Jeremiah, Moody, Hiram, Moody, Stephen, Leander.	Moses, Jeremiah, Nathan, Moody, Life, Jeremiah, Moody, Hiram, Moody, Stephen, Leander.	Moses, Jeremiah, Nathan, Moody, Life, Jeremiah, Moody, Hiram, Moody, Stephen, Leander.
---	---	---	---

DESCENDANTS OF TIMOTHY. — Continued.

4TH GENERATION.	5TH GENERATION.	6TH GENERATION.	7TH GENERATION.	8TH GENERATION.	9TH GEN.
Allen.	Allen.	Mark C. Allen.	Sons of Allen.	Edwin Lane, Lyman Blake.	
Joseph.	Joseph.	Charles. William.	Son of William.	Charles.	
Abraham.	Abraham.	Lewis Richmond, Charles Melvin.	Sons of Joseph.		
Daniel J.	Daniel J.	David Tuller.	Son of Abraham.	Oscar. Roscoe, David Sidney.	
John.	John.	Van Rensalare, Daniel W. Allen Putnam.	Sons of Daniel S.		
Silas.	Silas.	Sylvester. Hosca.	Sons of John.		
Humphrey.	Humphrey.	Andrew J. Martin Van Buren.	Sons of Silas.	Horace E. Warren H. Van. H. Ed. G.	
Stephen.	Stephen Jefferson, John Langden.	Elbridge. Sidney. Humphrey.	Sons of Humph.		
Jacob.	Stephen. Jacob. William P. Augustus M.	John Langden. Lewis Stephen.	Son of John L.		
	Frank. Samuel. Stephen.		Sons of Stephen.		
	Jacob. Orrin.		Sons of Jacob.		
	Monro P. Winfield A.		Sons of Aug. M.		

