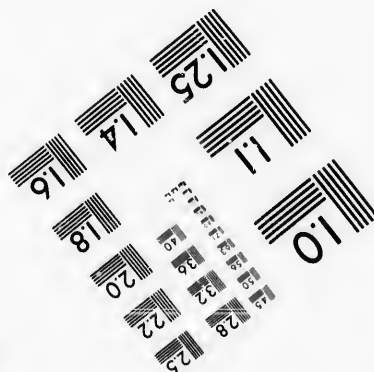
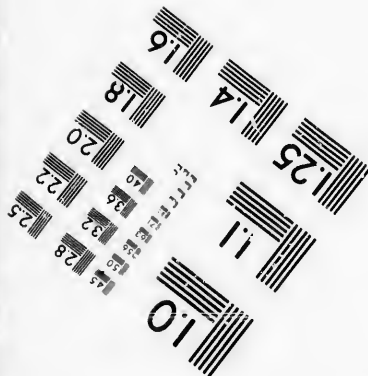
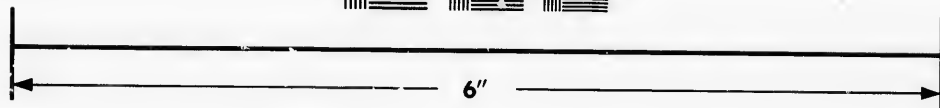
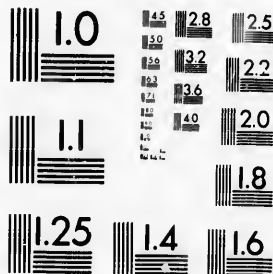


**IMAGE EVALUATION  
TEST TARGET (MT-3)**



**Photographic  
Sciences  
Corporation**

23 WEST MAIN STREET  
WEBSTER, N. Y. 14580  
(716) 872-4503



**CIHM/ICMH  
Microfiche  
Series.**

**CIHM/ICMH  
Collection de  
microfiches.**



Canadian Institute for Historical Microreproductions / Institut canadien de microreproductions historiques



**© 1986**

Technical and Bibliographic Notes/Notes techniques et bibliographiques

The Institute has attempted to obtain the best original copy available for filming. Features of this copy which may be bibliographically unique, which may alter any of the images in the reproduction, or which may significantly change the usual method of filming, are checked below.

L'Institut a microfilmé le meilleur exemplaire qu'il lui a été possible de se procurer. Les détails de cet exemplaire qui sont peut-être uniques du point de vue bibliographique, qui peuvent modifier une image reproduite, ou qui peuvent exiger une modification dans la méthode normale de filmage sont indiqués ci-dessous.

- |  |  |
|--|--|
| <input type="checkbox"/> Coloured covers/<br>Couverture de couleur   | <input type="checkbox"/> Coloured pages/<br>Pages de couleur   |
| <input type="checkbox"/> Covers damaged/<br>Couverture endommagée  | <input type="checkbox"/> Pages damaged/<br>Pages endommagées   |
| <input type="checkbox"/> Covers restored and/or laminated/<br>Couverture restaurée et/ou pelliculée  | <input type="checkbox"/> Pages restored and/or laminated/<br>Pages restaurées et/ou pelliculées  |
| <input type="checkbox"/> Cover title missing/<br>Le titre de couverture manque   | <input checked="" type="checkbox"/> Pages discoloured, stained or foxed/<br>Pages décolorées, tachetées ou piquées   |
| <input type="checkbox"/> Coloured maps/<br>Cartes géographiques en couleur   | <input type="checkbox"/> Pages detached/<br>Pages détachées  |
| <input type="checkbox"/> Coloured ink (i.e. other than blue or black)/<br>Encre de couleur (i.e. autre que bleue ou noire)   | <input checked="" type="checkbox"/> Showthrough/<br>Transparence   |
| <input type="checkbox"/> Coloured plates and/or illustrations/<br>Planches et/ou illustrations en couleur  | <input type="checkbox"/> Quality of print varies/<br>Qualité inégale de l'impression   |
| <input type="checkbox"/> Bound with other material/<br>Relié avec d'autres documents   | <input type="checkbox"/> Includes supplementary material/<br>Comprend du matériel supplémentaire   |
| <input type="checkbox"/> Tight binding may cause shadows or distortion<br>along interior margin/<br>La reliure serrée peut causer de l'ombre ou de la<br>distorsion le long de la marge intérieure   | <input type="checkbox"/> Only edition available/<br>Seule édition disponible   |
| <input type="checkbox"/> Blank leaves added during restoration may<br>appear within the text. Whenever possible, these<br>have been omitted from filming/<br>Il se peut que certaines pages blanches ajoutées<br>lors d'une restauration apparaissent dans le texte,<br>mais, lorsque cela était possible, ces pages n'ont<br>pas été filmées. | <input type="checkbox"/> Pages wholly or partially obscured by errata<br>slips, tissues, etc., have been refilmed to<br>ensure the best possible image/<br>Les pages totalement ou partiellement<br>obscurcies par un feuillet d'errata, une pelure,<br>etc., ont été filmées à nouveau de façon à<br>obtenir la meilleure image possible. |
| <input checked="" type="checkbox"/> Additional comments:/ [Printed ephemera] [4] p.<br>Commentaires supplémentaires:   |  |

This item is filmed at the reduction ratio checked below/  
Ce document est filmé au taux de réduction indiqué ci-dessous.

10X	14X	18X	22X	26X	30X
<input type="checkbox"/>	<input type="checkbox"/>	<input type="checkbox"/>	<input type="checkbox"/>	<input checked="" type="checkbox"/>	<input type="checkbox"/>
12X	16X	20X	24X	28X	32X

The copy filmed here has been reproduced thanks to the generosity of:

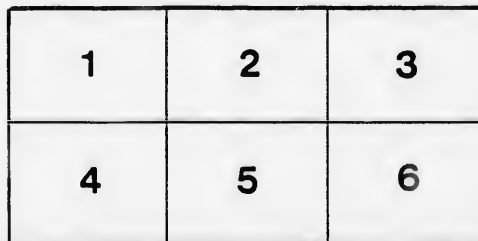
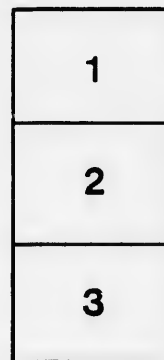
D. B. Weldon Library  
University of Western Ontario  
(Regional History Room)

The images appearing here are the best quality possible considering the condition and legibility of the original copy and in keeping with the filming contract specifications.

Original copies in printed paper covers are filmed beginning with the front cover and ending on the last page with a printed or illustrated impression, or the back cover when appropriate. All other original copies are filmed beginning on the first page with a printed or illustrated impression, and ending on the last page with a printed or illustrated impression.

The last recorded frame on each microfiche shall contain the symbol  $\rightarrow$  (meaning "CONTINUED"), or the symbol  $\nabla$  (meaning "END"), whichever applies.

Maps, plates, charts, etc., may be filmed at different reduction ratios. Those too large to be entirely included in one exposure are filmed beginning in the upper left hand corner, left to right and top to bottom, as many frames as required. The following diagrams illustrate the method:



L'exemplaire filmé fut reproduit grâce à la générosité de:

D. B. Weldon Library  
University of Western Ontario  
(Regional History Room)

Les images suivantes ont été reproduites avec le plus grand soin, compte tenu de la condition et de la netteté de l'exemplaire filmé, et en conformité avec les conditions du contrat de filmage.

Les exemplaires originaux dont la couverture en papier est imprimée sont filmés en commençant par le premier plat et en terminant soit par la dernière page qui comporte une empreinte d'impression ou d'illustration, soit par le second plat, selon le cas. Tous les autres exemplaires originaux sont filmés en commençant par la première page qui comporte une empreinte d'impression ou d'illustration et en terminant par la dernière page qui comporte une telle empreinte.

Un des symboles suivants apparaîtra sur la dernière image de chaque microfiche, selon le cas: le symbole  $\rightarrow$  signifie "A SUIVRE", le symbole  $\nabla$  signifie "FIN".

Les cartes, planches, tableaux, etc., peuvent être filmés à des taux de réduction différents. Lorsque le document est trop grand pour être reproduit en un seul cliché, il est filmé à partir de l'angle supérieur gauche, de gauche à droite, et de haut en bas, en prenant le nombre d'images nécessaire. Les diagrammes suivants illustrent la méthode.

Ladies! the only way to get help is through the "Free Press" Want Column.

**READ AND REFLECT.**

NOTICE TO OUR PATRONS—If the individual members of an audience would stop to think for just an instant, they would undoubtedly appreciate the fact that the habit of rising from their seats and leaving the theatre before the curtain falls, is a most annoying one, and one that should be stopped. We therefore beg our audiences to kindly remain in their seats until the close of the performance.

Evenings—doors open at 7:30; curtain rises at 8:15 sharp. Matinees—doors open at 7:30; curtain rises at 7:30 sharp.

Plan opens for each attraction two days in advance.



LONDON, ONT.

Seats can be secured by mail, telegraph or telephone. Telephone 732.

Physicians are requested to register at the Box Office, leaving seat number, as this will enable Ushers to find them if called for, without disturbing the audience.

Carriages can be ordered at the Box Office or of the Chief Usher.

Please report to the management any inattention on the part of the employees.

Overcoats, packages and umbrellas checked for a small charge.

For all lost articles apply at Box Office. Opera Glasses can be rented by applying to Ushers or at Box Office.

It is strange, but there is a class of people that seem to take an intense delight in bespattering the floor with tobacco juice and in being boisterous and using profane language. These people should know at once that the courts authorize their immediate expulsion, should the management see fit to exercise its rights.

**B**ETWEEN the Acts, and after the Opera is over go to the  
**OPERA + CIGAR**

+ **STORE** +

For Cigars, Cigarettes, Etc.  
LOUIS RISK.

**W. T. STRONG,**

Dispensing +

+ + **Chemist**

184 Dundas Street,  
LONDON - - - ONTARIO.

**HATS!**

—LATEST—

American and English Shapes

In all Colors,

—JUST OPENED.—

**Rivard**

LONDON'S FASHIONABLE HATTER,

400 Richmond St., LONDON, ONT.

C. J. WHITNEY ..... LESSEE AND MANAGER.  
A. E. ROOTE ..... REPRESENTATIVE.  
FRED. L. EVANS ..... DIRECTOR OF ORCHESTRA.  
GUS. SCHABACKER ..... STAGE MANAGER.  
JAMES LAMB ..... CHIEF USHER.

Saturday, March 18th, 1903.

+ **PROGRAMME.** +

**BOSTON IDEAL**



**Comic Opera Comp'y**



**GALATEA.**

(Programme Continued on Page 3.)

—WHEN YOU REQUIRE—

**First-Class Fashionable Footwear**

OF THE LATEST

ENGLISH, AMERICAN AND PARISIAN STYLES,

CALL AT

145 DUNDAS STREET

(D. Regan's old stand.)

All our Overshoes, Felts and Lined Rubbers will be sold at cost, as I must make room for my Elegant Spring and Summer Goods arriving daily.

**JNO. S. BROWN**

TELEPHONE 881.

**OUR PROGRAM.**

FOR THE PEOPLE'S PERPETUAL PIC-NIC!  
**THE GENUINE—**  
Heintzman & Co., Pianos!

**THE WORLD-FAMED—**  
Emerson Pianos!

**THE UNEQUALLED—**  
Goderich Organs!

**THE PERFECT—**  
White Sewing Machines!

**AN ENDLESS DISPLAY OF—**  
Small Musical Instruments!

**A MODEL ASSORTMENT OF—**  
Strings, Fittings, Music Books, Etc.

**THE ALL-IMPORTANT—**  
Marriage Licenses!

These and countless other good things can be obtained at "COLWELL'S POPULAR MUSIC HOUSE," 171 Dundas Street, LONDON.

**WE KEEP A FIRST-CLASS MUSIC STORE.**  
Our prices and Terms are the most reasonable. We deal very liberally with everybody. From distant buyers we invite orders by Mail, Telephone or Telegraph.

C. P. M. H. LEAS is all Competitors.  
CHAS. F. COLWELL, Proprietor.

The only place in the City to get the latest

**SCARFS.**

**Burns**

—The Furnisher.

A MAN

Wants to see you Between Acts

**Jerry McDonald's**

Across the Road.

181 KING STREET.

If you want the best take the "Free Press," all the news.

# Burns

\* \* SAYS

That the D B Sac Suit  
Will lead this Fall.

AND HE IS RIGHT.

## GREAT PRIZE SALE

Every Cash Customer buying One Dollar's  
worth or more of

WALL PAPER,

WINDOW SHADES,

CORNICE POLES,

ARTISTS' MATERIALS,

PICTURE FRAMES,

PICTURES,

ETC., ETC. ETC.

Stands the chance of securing a Prize worth from \$1.00  
to \$20.00 according to amount of purchase.

### E. N. HUNT,

190 DUNDAS ST., LONDON.

### Between the Acts.

Man (rising wearily to let late comer pass to his seat in the theater): "This eternal getting up is really annoying." Late Comer: "I know it is. That is the reason I never come in myself till the curtain is up."—*Texas Siftings*.

Actors are charitable. The record of their humanitarianism is wide horizoned. Their giving does not restrict itself to their own kind, but is made conspicuous in every line of outgo for sweet charity's sake. The public should recognize that generosity and on all fitting occasions reciprocate it.

The editor sat on a hard bottom chair, trying to think a thought, and he plucked all his fingers about through his hair, but not one topic they brought. He had written on temperance, tariff and trade, and the prospect of making a crop, and joked about making ice cream and weak lemonade, till his readers had told him to stop. And weary of thinking, sleep came to his eyes, and he pillowed his head on the desk when the thoughts which awake had refused to arise, came in troops that were strong and grotesque. And as the ideas airy float, he selects the bright one of the tribe; and this is the gem which, while dreaming he wrote:—"Now is the time to subscribe."—*Eaton Rapids Herald*.

### HELPING HIM OUT.

He was a bashful lover and had courted her long. She knew he loved her and knew that he was afraid to propose. She resolved to help him out.

"When I get married I hope to see you at my wedding," she said.

"Heavens!" he gasped, "I hoped to marry you myself."

"Well," she rejoined, as her cheeks flushed to the hue of a rosy sunset, "I meant I hoped to see you there as the groom." Then he fainted with joy.—*New York Press*.

Some careful person has estimated that there are 500,000,000 hairpins in daily use, not counting any of those the stable man picks up the next morning on the cushions of the sleigh.—*Boston Globe*.

## Marshall's \* Mammoth \* Livery

IS THE LARGEST AND THE OLDEST  
ESTABLISHMENT IN THE CITY.

DOES THE LEADING BUSINESS IN

Carriages, Cabs, Coupes, \*  
\* Victorias, Busses, Etc.

Every kind of Conveyance can be had there on the  
shortest notice, by Telephone No. 436.

JAS. S. MARSHALL, Proprietor.

Dundas Street. London, Ont.

## JAMES KILGOUR, Furniture Dealer and Upholsterer

MANUFACTURER OF ALL KINDS OF

FINE PARLOR WORK,  
HAIR MATTRESSES  
AND COUCHES.

If You Wish a Good Article go to

KILGOUR'S

353 RICHMOND STREET.

## For Fashionable WELL MADE SUITS

... CALL ON ...

# Burns

## The Tailor,

Dundas Street.

# Artistic \* Floral \* Design

EITHER WEDDING, PRESENTATION, DINNER TABLE, OR FUNERAL.

GO TO DILLOWAY,

The Leading Florist.

248 Dundas Street.

Choicest Cut Flowers Always on Hand.

TELEPHONE 597.

If you see it in the "London Free Press" it is so.

◀AFTER THE PERFORMANCE▶  
—STOP AT—

**Harry McKenna's,**

—FOR—  
Choice Havana Cigars & \*  
\* \* Tobacco Sundries.

225 Dundas Street.

Always Open After Performance.

**SMITH BROS.**

**Plumbers,  
Steam and Gas Fitters.**

ESTIMATES FURNISHED ON APPLICATION.

**All Work Warranted. Terms Moderate.**

376 RICHMOND STREET.  
(Opposite Masonic Temple.)

Telephone No. 538.

**THE TECUMSEH,**  
London, Ontario.



**Leading Hotel of Western Ontario.**

Large Sample Rooms Free of Charge.  
Baggage and Passenger Elevator.

Only one Block from the Grand Opera House.

**C. W. DAVIS,**  
PROPRIETOR.

**White · Sulphur · Springs · Baths**

FAMOUS HEALTH RESORT.

**The Saratoga of Canada.**

IN CONNECTION WITH THE HOTEL.

Great Attraction to Visitors Seeking Health.

C. W. DAVIS, A. D. HOLMAN,  
Treasurer. Manager.

\* THE LATEST ENGLISH \*  
**Collars, · Cuffs · and · Shirts.**  
ALL SIZES ALWAYS IN STOCK.

**Burns**

—DUNDAS STREET—

PROGRAMME CONTINUED.

—Cast.—

Pygmalion, a Young Grecian Sculptor . . . . . Mr. R. S. Nodine  
Leucippe, a Soldier, in love with Myrenne . . . . . Mr. Eugene Buzzel  
Alphonso de Chrysos, a Wealthy Jew and Art Patron . . . . . Mr. Frank Wooly  
Daphne, Wife of Chrysos, a Strong Minded Female . . . . . Miss Kathryn Evans  
Ganymede, a Greek Boy, Pygmalion's servant . . . . . Sadie Cushman  
Myrenne, Pygmalion's Sister . . . . . Miss Lillian E. Bullock  
Annetta . . . . . Claire Coleman  
—AND—  
INEZ MECUSKER, as . . . . . GALATEA

During the evening, incidental to the stage performance, the ORCHESTRA of the Grand Opera House, under the direction of MR. FRED L. EVANS, will perform the following selections:

Overture—"Festival" . . . . . Leutner  
Clarinet Solo—"Traviata-Cavatina" . . . . . Verdi  
Polonaise—"Wedding" . . . . . Leutner  
Selection—"Tolanthe" . . . . . Sullivan  
March—"Kameka" . . . . . Faust  
The above programme subject to transposition.

Programme Continued on Page 4.

**ENGLISH AND AMERICAN  
SPRING \*  
\* HATS  
—AT—  
BELTZ'S**

THE LEADING JEWELRY HOUSE  
OF LONDON,

—FOR—

**Diamonds, Watches, ·  
· · and Fine Jewelry.**

OPERA GLASSES FOR RENT.

**THOS. GILLEAN,**  
402 Richmond Street.

Issuer of Marriage Licenses.

For Fine Finished Artistic Photos

—GO TO—

**Westlake's \*  
\* Famous Studio**  
201 Dundas Street.

Get the Latest Novelties.

Photo Etchings and Aристо Finish.

**STUDIO ALL ON GROUP FLOOR.**

City Views can be had.

Phone 571.

**Wallace's Dining Hall  
AND CONFECTIONERY.**

354 Richmond Street.

Lunches at all hours.

Hot Tea and Coffee.

Oysters in every style.

Choice Cakes,

Candles, Etc.

GIVE US A CALL.

**OFFICE RESTAURANT**

Opposite the Masonic Temple, Richmond St.

**CHOICE WINES,**

**LIQUORS, ALES,**

**CIGARS, ETC.**

Restaurant on the European Plan.

OYSTERS IN EVERY STYLE.

D. SARE,

Proprietor.

Look out for the "London Free Press" on all early morning Trains.



## VASELINE.

EVERYBODY knows the great value of this remedy in the household, but everybody does not know that the imitations of it, which some second class druggists dishonorably palm off on their customers, have little or no value. What should be understood by the public is, that it is not a mere question of comparative value between "Vaseline" and the imitations, but that the imitations do not effect the wonderful healing results of the world renowned "Vaseline" and that they are not the same thing nor made in the same way. Besides this, many of the imitations are harmful, irritant and not safe to use, while true Vaseline is perfectly harmless.

Perfect safety therefore lies in buying only original packages put up by and marked with our name.

CHESEBROUGH MFG CO.

## FLOWERS



—FOR—

## OPERA OR BALL

—AT—

## GAMMAGE'S

Duffield Block, 213 Dundas Street.

FRESH EVERY DAY.

TELEPHONE 807.

## NEXT ATTRACTION



Wednesday, March 22nd.

THE CHARMING SINGER AND COMEDIAN,  
CLEVER

## Tony Farrell

IN JAMES A. HERNE'S IRISH PASTORAL

## MY COLLEEN

A refined story of the Emerald Isle replete with Comedy and Music.

HEAR TONY FARRELL'S NEW SONGS.

SEE CUTE, CUNNING BABY HONOR.

This is the same Company seen for five consecutive weeks in "My Colleen" at McVicker's Theatre, Chicago.

PRICES, 25c., 50c. and 75c.

• • LADIES' TAILOR-MADE • •

## COSTUMES & RIDING HABITS.

# Burns

154 Dundas Street.

PROGRAMME CONTINUED.

## Synopsis.

ACT I.—Studio of Pygmalion. Invisible Chorus. Solo, "Fare Thee Well," Ganymede. Chrysos knocks. Aria: "To my Father Gordios," Chrysos. Trio, "What an Insult," Chrysos, Pygmalion, Ganymede. Daphne's visit. Pygmalion is tempted. 'Tis but a statue after all. Duet, Leucippe and Myrenne, Chorus, "Aurora is awake." Pygmalion's Prayer.

THE AWAKENING OF "GALATEA."

ACT II.—In the garden. Recitative and Solo, Galatea, "Is this Life?" Chrysos attempts a flirtation. Daphne takes a hand. Myrenne sees a ghost. Trio, "We've seen a Ghost," Myrenne, Daphne and Ganymede. Song, Myrenne. Solo, "A Soldier's Life," Leucippe. Serenade, "Hark! Hark! my love," Pygmalion. The Statue is gone. Finale, Pygmalion, Galatea and Chorus.

ACT III.—Pygmalion's Studio. Topical Song, "It's so Classic," Ganymede. Chrysos secures an introduction. Terzetto, "See these gems," Galatea, Ganymede and Chrysos. Chrysos repulsed. Drinking song, Galatea and Chorus. Chrysos discovered. Song, "Once on a Time," Daphne. Duet, "Kiss song," Galatea and Ganymede. Pygmalion has a surprise. Recitative and prayer, Pygmalion. Galatea again the statue. Chorus. Curtain.

Opera Glasses can be rented by applying to Ushers or at Box Office.

## THE PIANO

Used in the Orchestra is from the

## GERHARD HEINTZMAN CO.

69 and 75 Sherbourne St., Toronto.

LONDON WAREROOM: 226 DUNDAS STREET.

## W. T. STRONG,

## Dispensing \*

## \* \* Chemist

184 Dundas Street,

LONDON, . . . ONTARIO.

## Parisian Steam Laundry

73 and 75 DUNDAS ST.



Laundry work transferred free of charge to and from Toronto, Hamilton, Brantford, Woodstock, Stratford, Guelph, London, St. Thomas, Chatham, Windsor and Sarnia.

J. K. SPRY, Manager.

MONDAY, MARCH 20th,

## The Belle Botsford Concert Co.

OF BOSTON.

On Monday evening the Belle Botsford Concert Company of Boston, give one of their high class concerts, by classical artists, at the Grand Opera House, under the auspices of Kilwinning Lodge, No. 64, A., F. & A. M. Mr. J. S. Curtis, Pres. Y.M.C.A., University of Virginia, says:—  
*From Mr. J. S. Curtis, Pres. Y.M.C.A., University of Virginia.*

"It gives me great pleasure to say we regard the Belle Botsford Co. one of the best that has ever been to the University. Miss Botsford, not only by her skilful execution, but also by her charming stage manner, completely won her audience from the first. Indeed we have nothing but praise for the whole company.

The large advance sale of seats indicate that the musical people of London will patronize this high-class concert to the extent it deserves.

Prices,—25c., 50c., and 75c.

Reserved seats now on sale.



