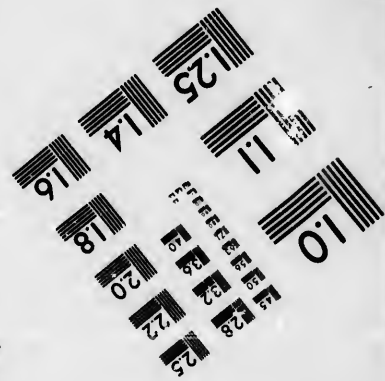
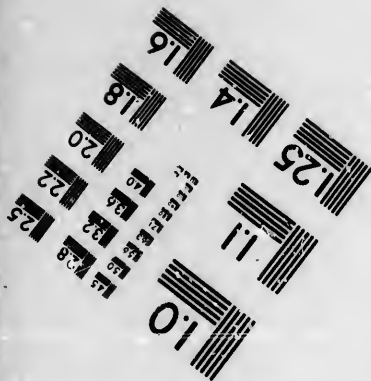
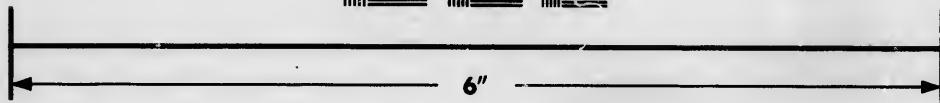
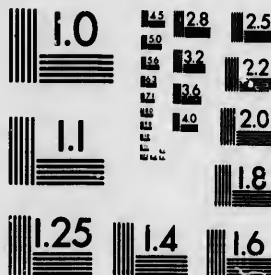


**IMAGE EVALUATION
TEST TARGET (MT-3)**



**Photographic
Sciences
Corporation**

23 WEST MAIN STREET
WEBSTER, N.Y. 14580
(716) 872-503

**CIHM/ICMH
Microfiche
Series.**

**CIHM/ICMH
Collection de
microfiches.**



Canadian Institute for Historical Microreproductions / Institut canadien de microreproductions historiques

© 1986

Technical and Bibliographic Notes/Notes techniques et bibliographiques

The Institute has attempted to obtain the best original copy available for filming. Features of this copy which may be bibliographically unique, which may alter any of the images in the reproduction, or which may significantly change the usual method of filming, are checked below.

L'Institut a microfilmé le meilleur exemplaire qu'il lui a été possible de se procurer. Les détails de cet exemplaire qui sont peut-être uniques du point de vue bibliographique, qui peuvent modifier une image reproduite, ou qui peuvent exiger une modification dans la méthode normale de filmage sont indiqués ci-dessous.

- | | |
|--|--|
| <input type="checkbox"/> Coloured covers/
Couverture de couleur | <input checked="" type="checkbox"/> Coloured pages/
Pages de couleur |
| <input type="checkbox"/> Covers damaged/
Couverture endommagée | <input type="checkbox"/> Pages damaged/
Pages endommagées |
| <input type="checkbox"/> Covers restored and/or laminated/
Couverture restaurée et/ou pelliculée | <input type="checkbox"/> Pages restored and/or laminated/
Pages restaurées et/ou pelliculées |
| <input type="checkbox"/> Cover title missing/
Le titre de couverture manque | <input checked="" type="checkbox"/> Pages discoloured, stained or foxed/
Pages décolorées, tachetées ou piquées |
| <input type="checkbox"/> Coloured maps/
Cartes géographiques en couleur | <input type="checkbox"/> Pages detached/
Pages détachées |
| <input type="checkbox"/> Coloured ink (i.e. other than blue or black)/
Encre de couleur (i.e. autre que bleue ou noire) | <input checked="" type="checkbox"/> Showthrough/
Transparence |
| <input type="checkbox"/> Coloured plates and/or illustrations/
Planches et/ou illustrations en couleur | <input type="checkbox"/> Quality of print varies/
Qualité inégale de l'impression |
| <input type="checkbox"/> Bound with other material/
Relié avec d'autres documents | <input type="checkbox"/> Includes supplementary material/
Comprend du matériel supplémentaire |
| <input type="checkbox"/> Tight binding may cause shadows or distortion
along interior margin/
La reliure serrée peut causer de l'ombre ou de la
distorsion le long de la marge intérieure | <input type="checkbox"/> Only edition available/
Seule édition disponible |
| <input type="checkbox"/> Blank leaves added during restoration may
appear within the text. Whenever possible, these
have been omitted from filming/
Il se peut que certaines pages blanches ajoutées
lors d'une restauration apparaissent dans le texte,
mais, lorsque cela était possible, ces pages n'ont
pas été filmées. | <input type="checkbox"/> Pages wholly or partially obscured by errata
slips, tissues, etc., have been refilmed to
ensure the best possible image/
Les pages totalement ou partiellement
obscurcies par un feuillet d'errata, une pelure,
etc., ont été filmées à nouveau de façon à
obtenir la meilleure image possible. |
| <input type="checkbox"/> Additional comments:
Commentaires supplémentaires: | |

This item is filmed at the reduction ratio checked below/
Ce document est filmé au taux de réduction indiqué ci-dessous.

10X	12X	14X	16X	18X	20X	22X	24X	26X	28X	30X	32X
											✓

The copy filmed here has been reproduced thanks to the generosity of:

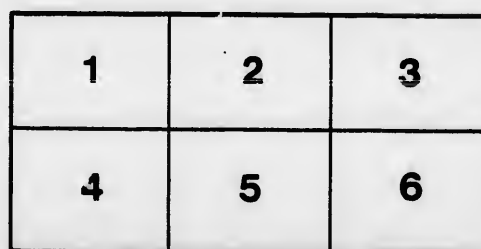
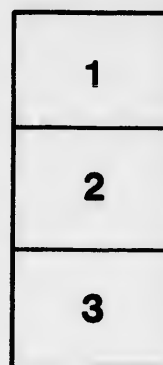
New Brunswick Museum
Saint John

The images appearing here are the best quality possible considering the condition and legibility of the original copy and in keeping with the filming contract specifications.

Original copies in printed paper covers are filmed beginning with the front cover and ending on the last page with a printed or illustrated impression, or the back cover when appropriate. All other original copies are filmed beginning on the first page with a printed or illustrated impression, and ending on the last page with a printed or illustrated impression.

The last recorded frame on each microfiche shall contain the symbol \rightarrow (meaning "CONTINUED"), or the symbol ∇ (meaning "END"), whichever applies.

Maps, plates, charts, etc., may be filmed at different reduction ratios. Those too large to be entirely included in one exposure are filmed beginning in the upper left hand corner, left to right and top to bottom, as many frames as required. The following diagrams illustrate the method:



L'exemplaire filmé fut reproduit grâce à la générosité de:

New Brunswick Museum
Saint John

Les images suivantes ont été reproduites avec le plus grand soin, compte tenu de la condition et de la netteté de l'exemplaire filmé, et en conformité avec les conditions du contrat de filmage.

Les exemplaires originaux dont la couverture en papier est imprimée sont filmés en commençant par le premier plat et en terminant soit par la dernière page qui comporte une empreinte d'impression ou d'illustration, soit par le second plat, selon le cas. Tous les autres exemplaires originaux sont filmés en commençant par la première page qui comporte une empreinte d'impression ou d'illustration et en terminant par la dernière page qui comporte une telle empreinte.

Un des symboles suivants apparaîtra sur la dernière image de chaque microfiche, selon le cas: le symbole \rightarrow signifie "A SUIVRE", le symbole ∇ signifie "FIN".

Les cartes, planches, tableaux, etc., peuvent être filmés à des taux de réduction différents. Lorsque le document est trop grand pour être reproduit en un seul cliché, il est filmé à partir de l'angle supérieur gauche, de gauche à droite, et de haut en bas, en prenant le nombre d'images nécessaire. Les diagrammes suivants illustrent la méthode.

errata
to

pelure,
n à



32X

A SCHEDULE
OF
REAL ESTATE
ON THE
EASTERN SIDE OF HARBOUR
AND IN
THE PARISH OF LANCASTER,
BELONGING TO THE
MAYOR, ALDERMEN AND COMMONALTY
OF THE
CITY OF SAINT JOHN,
WITH A STATEMENT OF THE
ANNUAL INCOME, &c.
AT PRESENT ARISING THEREFROM.

PREPARED BY ORDER OF THE COMMON COUNCIL,

By HURD PETERS, CITY ENGINEER.

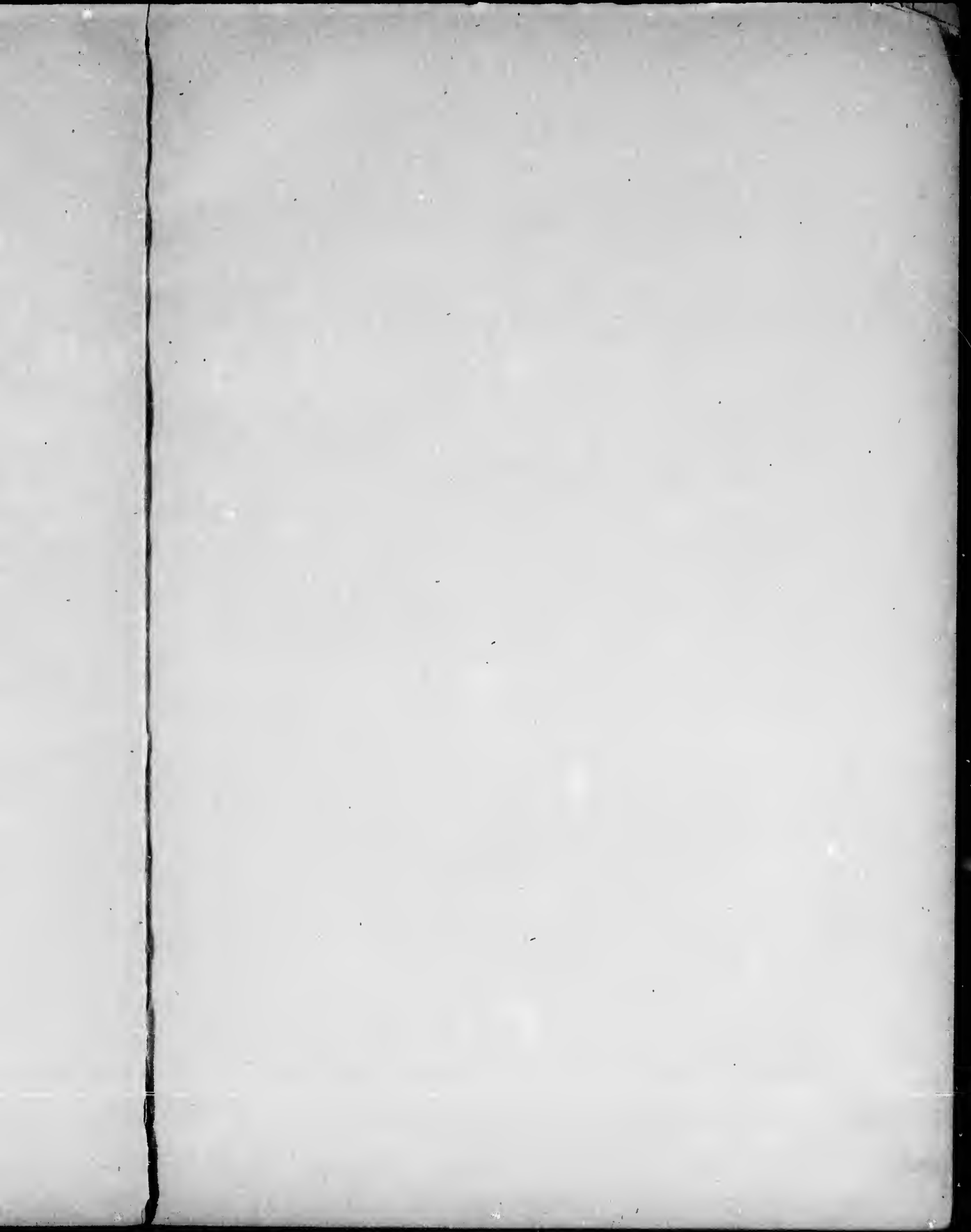
SEPTEMBER, 1887.

SAINT JOHN, NEW BRUNSWICK,
PRINTED BY GEO. A. KNODELL, 10 CHURCH STREET.

1888.

582
3653

Q
917.153
PET



No

Part c

No. 3

No. 2

No. 1

No. 1

Block

RENT ROLL

Of City Corporation Lots on the Eastern Side of the Harbour.

No. of Lot.	Street.	Ward.	To whom originally leased.	Date.	Present Holders of Lease.	Term.	Rent.	Payable.	Expiry.	Remarks
266	Union,	Prince,	Bernard Reynolds,	Mar. 1857	James Reynolds,	7 years,	\$ 4 10	Half-yearly,	May, 1885	
267	do.	do.	do.	do.	do.	do.	4 10	do.	do.	
268	do.	do.	do.	do.	do.	do.	4 10	do.	do.	
269	do.	do.	do.	do.	do.	do.	6 00	do.	May, 1878	
270	do.	do.	Charles Wark,	do.	Charles N. Skinner,	21 years,	10 00	do.	May, 1885	
271	do.	do.	do.	do.	do.	14 years,	10 00	do.	do.	
272	do.	do.	Nathaniel Adams,	July, 1852	Jas. and Margaret Adams,	7 years,	24 00	do.	Aug. 1887	
273	do.	do.	John M. Walker,	do.	Mary Conroy,	14 years,	21 00	do.	May, 1894	
274	do.	do.	James Elliott,	Oct. 1844	James Elliott,	14 years.	13 20	do.	Nov. 1887	
275	do.	do.	Joseph Fairweather,	July, 1845	David Angovino.	7 years.	11 50	do.	May, 1886	
276	Elliott Row,	do.	Nathaniel Adams,	Oct. 1844	John Kain	do.	12 00	do.	Nov. 1893	
277	do.	do.	Joseph Fairweather,	do.	Ross Selfridge,	do.	9 50	do.	do.	
278	do.	do.	Thomas Edwards,	do.	Thomas Hale,	do.	11 00	do.	Nov. 1897	
279	do.	do.	Thomas Hale,	July, 1852	do.	do.	28 00	do.	do.	
280	do.	do.	} William Fenety and { Charles E. Raymond,	} July, 1858	} James A. Hoyt,	} do.	} 13 33	} do.	} May, 1892	
281	do.	do.								
No. 2	280	do.	do.	do.	Jane Knodell,	do.	13 33	do.	do.	
No. 1.	281	do.	do.	do.	Margaret Flood,	do.	13 34	do.	do.	
	282	do.	George Hutchinson,	Sept. 1857	Stephen E. Gerow,	do.	20 00	do.	May, 1885	
	283	do.	do.	June, 1857	Jane F. Betts and Sarah E. Skinner,	do.	3 40	do.	May, 1893	
	284	do.	do.	Feb. 1854	James McElwee,	do.	3 40	do.	do.	
	346	do.	C. G. Allen, Administrator,	Sept. 1859	Matthew Paul,	do.	8 00	do.	May, 1886	
	347	do.	do.	do.	Richard P. Butler,	21 years,	46 00	do.	May, 1898	
	348	do.	F. Clementson,	Feb. 1859	R. C. Skinner,	14 years,	20 00	do.	May, 1891	
	349	do.	Patrick Cain,	June, 1835	Ann Cotter,	7 years.	20 00	do.	do.	
	350	do.	James Driecoll,	Sept. 1852	Jacob Fritz,	do.	8 00	do.	May, 1885	
	351	do.	do.	do.	Peter Sharkey,	do.	48 00	do.	do.	
	352	do.	do.	do.	George Marsh,	do.	8 00	do.	May, 1892	
Block A	6	do.	John McCarthy,	Oct. 1849	Peter Sharkey,	do.	8 50	do.	Nov. 1884	
	7	do.	Timothy Hayes,	do.	Julia Hayes,	do.	10 50	do.	Nov. 1891	
	8	do.	John Lynan,	do.	Albert J. Lordly,	14 years.	9 00	do.	Nov. 1884	
	9	do.	do.	do.	do.	do.	12 00	do.	do.	
	10	do.	Holt & Nugent,	Nov. 1859	do.	12 years, 1 month,	12 00	do.	Dec. 1884	
	11	do.	do.	do.	George A. Noble,	do.	12 50	do.	do.	
	12	Union.	do.	do.	Robert J. Lordly <i>et al.</i>	do.	12 50	do.	do.	

Rent Roll, City Corporation Lots, Eastern Side of the Harbour.—Continued.

No. of Lot.	Street.	Ward.	To whom originally leased.	Date.	Present Holders of Lease.	Term.	Rent.	Payable.	Expiry.	Remarks
Block A.	1 Union,	Prince,	Christopher Nobis,	Oct. 1849	George Collard,	7 years,	\$ 14 00	Half-yearly,	May, 1856	
	2 do.	do.	do.	do.	John McCarthy,	do.	10 00	do.	Nov. 1860	
	3 do.	do.	Joseph Fairweather,	do.	Albert J. Lordly,	14 years,	8 00	do.	Nov. 1854	
	4 do.	do.	John Lynam,	do.	do.	do.	11 00	do.	do.	
	5 do.	do.	do.	do.	do.	do.	12 00	do.	Aug. 1857	
Block B.	1 Elliott Row,	do.	James Driscoll,	July, 1852	Anne Scribner,	7 years,	12 00	do.	do.	
	2 do.	do.	Alexander Boyne,	do.	Wm. J. Logan,	do.	11 25	do.	do.	
	3 do.	do.	Thomas McKee,	do.	David J. Magee,	do.	8 80	do.	do.	
	4 do.	do.	George Woods,	do.						
	5 King,	do.	James S. Ballentine,	do.	Geo. V. Nowlin.	do.	9 20	do.	May, 1865	
	6 do.	do.	Alexander Boyne,	do.	George Travis,	do.	6 20	do.	Aug. 1857	
	7 do.	do.	George Woods,	do.	do.	6 years.	6 20	do.	do.	
	354 do.	do.	Est. Geo. P. Peters.	June, 1853	John McCarthy,	7 years.	1 10	do.	May, 1862	
	357 do.	do.	Charles Patton,	Dec. 1853	Charles Patton,	do.	10 00	do.	do.	
	358 do.	do.	do.	do.	do.	do.	10 00	do.	do.	
	359 do.	do.	Archibald Totten,	do.	Aaron Armstrong,	do.	10 00	do.	do.	
	360 do.	do.	do.	do.	Wm. N. Dewitt,	do.	10 00	do.	do.	
	361 do.	do.	do.	do.	do.	do.	10 00	do.	do.	
	362 do.	do.	do.	Jan. 1836	George Hare,	do.	20 00	do.	May, 1891	
	A N. Market Wharf,	Kings,	Hugh Johnston,	Aug. 1789	Est. Robert Robertson,	Perpetual.	47 00	Yearly,		
	B do.	do.	Richard Bonsall,	do.	Est. R. Bonsall,	do.	36 00	do.		
	1 do.	do.	William Donald,	Mar. 1795	Mary A. Duncan,	do.	43 00	do.		
	2 do.	do.	A. Dingwall,	May, 1789	Diocesan Church Society,	do.	28 00	do.		
	3 do.	do.	Thomas Mullin,	Apr. 1789	R. P. McGivern,	do.	23 00	do.		
	4 do.	do.	Benjamin M. Woolsey,	Sept. 1798	Est. W. H. Scovil,	do.	38 00	do.		
	5 do.	do.	Donaldson and Hendricks,	Apr. 1800	White & Titus,	do.	59 00	do.		
	6 do.	do.	Hatfield and Carpenter,	May, 1800	Est. L. H. DeVeber,	do.	53 00	do.		
	7 do.	do.	Given by Corporation		for Nelson Street.					
Part B	do.	do.	John Waterbury,	Mar. 1806	D. J. McLaughlan, Jr.,	do.	12 34	do.		
	9 do.	do.	Hugh Johnstone,	Apr. 1800	George F. Smith,	do.	35 00	do.		
	10 do.	do.	Ezekiel Barlow,	Nov. 1813	do.	do.	88 00	do.		
	11 do.	do.	James Hay, Jr.,	Dec. 1813	Est. J. W. Nicholson,	do.	25 60	do.		
	12 do.	do.	do.	do.	do.	do.	25 60	do.		
	13 do.	do.	William Black,	Mar. 1814	do.	do.	52 40	do.		
	14 do.	do.	Alexander Edmond,	Dec. 1815	do.	do.	75 00	do.		
	15 do.	do.	Ezekiel Barlow,	do.	do.	do.	108 00	do.		
Water Lot	do.	do.	Hon. John Robertson,	July, 1854	Est. Hon. John Robertson,	do.	170 00	Half-yearly,		

-Continued.

Payable	Expiry	Remarks
yearly,	May, 1886	
do.	Nov. 1890	
do.	Nov. 1884	
do.	do.	
do.	Aug. 1887	
do.	do.	
do.	do.	
do.	do.	
do.	May, 1885	
do.	Aug. 1887	
do.	do.	
do.	May, 1892	
do.	do.	
do.	do.	
do.	do.	
do.	do.	
do.	do.	
do.	May, 1891	
do.		
do.		
do.		
do.		
do.		
do.		
do.		
do.		
do.		
do.		
do.		
do.		
do.		
do.		
do.		
do.		
do.		

Rent Roll, City Corporation Lots, Eastern Side of the Harbour.—Continued.

No. of Lot.	Street.	Ward.	To whom originally leased.	Date.	Present Holders of Lease.	Term.	Rent.	Payable.	Expiry.	Remarks
	N. Market Wharf,	Kings,	F. Marchington,	Aug. 1786	Est. Hon. John Robertson,	Perpetual.	\$ 1 00	Yearly,		
	do.	do.	David Waterbury,	Feb. 1855	do.	do.	20 00	Half-yearly,		
	do.	do.	Margaret Brown,	do.	Maritime Warehouse Co.,	do.	20 00	do.		
	Whf. Extension,	do.	Hon. John Robertson,		Est. Hon. John Robertson,	do.	80 90	do.		
	do.	do.	do.		do.	do.	120 00	do.		
Lot	Corner of Sewall and Dorchester,	do.	Elias S. Flagler,	Aug. 1877	William Rainie,	21 years,	300 00	do.	Aug. 1898	
Lot	Corner of Hazen and Dorchester,	do.								
	18. Market Wharf,	Queens,	C. McPherson,	Dec. 1788	S. and J. T. Tisdale,	Perpetual,	82 00	Yearly,		
2	do.	do.	James Grigor,	do.	do.	do.	60 00	do.		
3	do.	do.	Moses Ward,	do.	Elizabeth Wilson,	do.	28 00	do.		
4	do.	do.	Thomas Reed,	do.	Est. R. C. Waltham,	do.	32 00	do.		
5	do.	do.	John Smith,	Apr. 1789	T. G. Merritt,	do.	25 00	do.		
6	do.	do.	John Prince,	Dec. 1791	W. M. Jarvis,	do.	31 00	do.		
7	do.	do.	George Younghusband,	Apr. 1793	W. V. C. & G. L. Barbour,	do.	74 00	do.		
			Given by Corporation		for Ward Street,					
8	do.	do.	John S. Venner,	Apr. 1800	George S. Deforest,	do.	70 00	do.		
9	do.	do.	John Ryan,	Aug. 1800	Est. Rev. Wm. Scovell,	do.	59 00	do.		
10	do.	do.	Stephen Humbert,	Apr. 1800	ll. and J. S. Gilbert,	do.	56 00	do.		
11	do.	do.	Peters and Wiggins,	Jan. 1812	Est. Geo. C. Wiggins,	do.	29 00	do.		
12	do.	do.	Ebenezer Seely,	May, 1800	James E. Masters,	do.	28 00	do.		
13	do.	do.	Peter Hume,	Oct. 1813	W. J. Whiting,	do.	48 20	do.		
14	do.	do.	L. L. Bedell,	May, 1814	Est. I. L. Bedell,	do.	40 00	do.		
15	do.	do.	J. M. Wilmot,	do.	John H. Allen,	do.	47 00	do.		
16	do.	do.	J. and M. Yeamans,	Dec. 1815	J. and R. Reed,	do.	69 00	do.		
17	do.	do.	Edmond and Bedell,	do.	D. P. Merritt,	do.	70 00	do.		
18	do.	do.	Thomas Smith,	Nov. 1818	W. J. Whiting,	do.	96 00	do.		
Water Lots, N ½ 9		do.	Gerhardus Clowes,	July, 1786	Bela R. Lawrence,	do.	1 00	do.		
S ½ 9		do.	Henry Thomas,	Aug. 1786	W. W. Turnbull,	do.	1 00	do.		
In front ½ 9		do.	David Hatfield,	July, 1819	do.	do.	20 00	do.		
N ½ 10		do.	Thomas Whitlock,	July, 1786	do.	do.	1 00	do.		
		do.			do.	do.	12 50	do.		
S ½ 10		do.	John Colville,	do.	do.	do.	1 00	do.		
		do.			do.	do.	12 50	do.		
		do.			Heirs of W. M. B. Firth,	do.	15 00	do.		
11		do.	James Peters,	do.	do.	do.	1 00	do.		
12		do.	do.	do.	do.	do.	1 00	do.		
13		do.	Thomas Horsfield,	May, 1786	do.	do.	2 80	do.		

Rent Roll, City Corporation Lots, Eastern Side of the Harbour.—Continued.

No. of Lot.	Street.	Ward.	To whom originally leased.	Date.	Present Holders of Lease.	Term.	Rent.	Payable.	Expiry.	Remarks
Water Lots 13		Queens,	William Tyng Peters,	Jan. 1815	Heirs of W. M. B. Firth,	Perpetual.	\$ 1 00	Yearly,		
Front of 13		do.	Charles Jeffrey Peters,	Nov. 1819	do.	do.	20 00	do.		
Adj. side 14		do.	Hugh Johnston,	Nov. 1822	George MoLeod,	do.	20 00	do.		
Extension,		do.	John Walker,		Heirs of W. M. B. Firth,	do.	178 67	do.		
S part 14		do.	Thomas Bean,	May, 1787	Robert Thompson,	do.	1 20	do.		
Extension,		do.			do.	do.	89 33	do.		
15		do.	William Frost,	July, 1786	Emily Thompson,	do.	1 00	do.		
"		do.	Noah Disbrow,	Jan. 1826	William Magee,	do.	1 00	do.		
Front 15		do.	do.	Jan. 1820	Magee Brothers,	do.	20 20	do.		
76 prt. 15 & 17		do.	Nehemiah Morrill,	do.	Est. Charles Merritt,	do.	40 00	do.		
18		do.	William Donald,	do.	Est. James W. Thomas,	do.	20 00	do.		
19		do.	Daniel Lovitt,	July, 1820	do.	do.	21 00	do.		
20		do.	S. and C. Thomas,	Apr. 1824	W. and J. Lawton,	do.	1 00	do.		
80 ft. No 14 p.		do.	Thomas Paddock,	Jan. 1826	do.	do.	40 00	Half-yearly,		
451	Leinster,	do.	James Sullivan,	Dec. 1857	Eleanor Sullivan,	7 years,	1 65	Yearly,	May, 1892	
452	do.	do.	Dennis Sullivan,	do.	Est. Dennis Sullivan,	do.	1 65	do.	do.	
453	do.	do.	John Lough,		James H. McAvilly,	do.	20 00	Half-yearly,	May, 1891	
454	do.	do.	Robert Hannah,	Mar. 1833	Emma C. Masters,	do.	10 00	do.	May, 1885	
455	do.	do.	James Dawson,	Dec. 1857	Geo. B. Colwell,	do.	25 00	do.	May, 1892	
457	do.	do.	Samuel Bustin,	Jan. 1852	F. Beatrice Hatheway,	do.	10 00	do.	May, 1886	
458	do.	do.	Uriah Poultney,	Feb. 1854	John Sandall,	do.	1 05	do.	May, 1887	
459	do.	do.	Chas. W. Allen,	Jan. 1851	Thomas Kee,	do.	8 00	do.	May, 1892	
N ½ 460	do.	do.	John Smith,	Aug. 1857	D. H. Waterbury,	do.	1 00	do.	do.	
S ½ 460	do.	do.	do.	do.	Rev. J. E. Hopper,	do.	0 55	do.	do.	
½ 461	do.	do.	do.	Dec. 1853	George W. Day,	do.	5 00	do.	May, 1885	
½ 461	do.	do.	Cornelius C. Vaughan,	do.	Wm. Baxter,	do.	5 00	do.	May, 1887	
458	do.	do.	Wm. A. Robertson,	Dec. 1852	Wm. H. Hayward,	do.	10 00	do.	May, 1878	
472	do.	do.								
518	do.	do.	Hugh McDavitt,	Jan. 1857	Trustees of Centenary Ch.,	do.	20 00	do.		
522	do.	do.	Adam Jack,	June, 1851	Elizabeth J. Gillingham,	do.	10 00	do.	May, 1891	
523	do.	do.	George V. Nowlin,	Feb. 1859	George V. Nowlin,	do.	3 00	do.	May, 1885	
525	do.	do.	do.	do.	Henry R. Ranney,	do.	3 00	do.	May, 1891	
533	do.	do.	Richard M. Longmaid,	Mar. 1855	Richard M. Longmaid,	do.	1 60	do.	May, 1892	
535	do.	do.	Est. L. H. Lynam,	June, 1857	L. H. DeVeber,	do.	8 00	do.	May, 1885	
537	do.	do.	do.	do.	Robert Law,	do.	8 00	do.	do.	
538	do.	do.	do.	do.	do.	do.	8 00	do.	do.	
Block E. 1	do.	do.			M. Wallace Francis,	do.	16 00	do.	May, 1878	

—Continued.

Payable.	Expiry.	Remarks
arly,		
do.		
do.		
do.		
do.		
do.		
do.		
do.		
do.		
do.		
do.		
do.		
do.		
f-yearly,		
arly.	May, 1892	
do.	do.	
f-yearly,	May, 1891	
do.	May, 1885	
do.	May, 1892	
do.	May, 1886	
do.	May, 1887	
do.	May, 1892	
do.	do.	
do.	do.	
do.	May, 1885	
do.	May, 1887	
do.	May, 1878	
do.		
do.	May, 1891	
do.	May, 1885	
do.	May, 1891	
do.	May, 1892	
do.	May, 1885	
do.	do.	
do.	do.	
do.	May, 1878	

No.

Block

Block

Block

Rent Roll, City Corporation Lots, Eastern Side of the Harbour.—Continued.

No. of Lot.	Street.	Ward.	To whom originally leased.	Date.	Present Holders of Lease.	Term.	Rent.	Payable.	Expiry.	Remarks
Block E.	2 Leinster,	Queens,			Est. R. J. Patterson,	7 years,	\$ 7 75	Half-yearly,	May, 1885	
Part 438	Pitt,	do.	James Garrett,	Oct. 1852	Est. Thos. King,	do.	7 50	do.	May, 1893	
Part 438	King,	do.	do.	Jan. 1852	Est. Jas. Milligan,	do.	2 50	do.	May, 1886	
447	do.	do.	Samuel Bustin,	do.	John Mahoney,	do.	10 00	do.		
448	do.	do.	do.	do.	Benj. B. Bustin,	do.	10 00	do.		
541	Princess,	do.	William Sullivan,	Dec. 1857	William Sullivan,	do.	1 00	do.	May, 1892	
542	do.	do.	Robert McKelvey,	Sept. 1820	Joseph W. Potts,	21 years,	48 00	do.	do.	
544	do.	do.	J. Colgley and J. Beckwith	Jan. 1850	Est. John W. Sullis,	7 years.	24 00	do.	do.	
546	do.	do.	Charles Patton,	Nov. 1856	Charles Patton,	21 years,	60 00	do.	May, 1896	
547	do.	do.								
552	do.	do.	Wm. C. Godsoe,		Wm. C. Godsoe,	7 years.	20 00	do.	May, 1893	
661	do.	do.	Elsie Pitts,	Feb. 1858	Hon. A. L. Palmer,	14 years,	20 00	do.	May, 1892	
664	do.	do.	John Doherty,	May, 1860	Est. Wm. Hammond,	do.	20 00	do.		
668	do.	do.	John Kay,		John Kay,	21 years,	20 20	do.	Nov. 1877	
669	do.	do.	Wm. B. Frost,	July, 1857	Jane Brundage,	7 years,	1 00	Yearly,	May, 1891	
670	do.	do.	do.	Dec. 1835	Est. Sam. Wilson,	do.	1 00	do.	do.	
Block F.	3 do.	do.	Charles Patton,	Nov. 1849	Charles Patton,	do.	13 20	do.	Feb. 1892	
4	do.	do.	do.	do.	Wm. P. Rourke,	do.	11 00	do.	May, 1885	
5 and 6	do.	do.	do.	do.	do.	do.	12 00	do.	May, 1889	
Block D.	1 do.	do.	Wm. B. Frost,	July, 1867	Est. J. E. Arrowsmith,	do.	48 00	Half-yearly,	May, 1885	
2	do.	do.								
3	do.	do.								
4	do.	do.								
671	Orange,	do.	Ewen Cameron,	Mar. 1836	Wm. Gordon,	21 years,	48 00	do.	May, 1900	
673	do.	do.	John Gaddes,	May, 1837	Wm. P. Rourke,	7 years.	12 00	do.	do.	
674	do.	do.	Chas. Cameron,	Nov. 1869	Francis E. Buchanan,	14 years,	30 00	do.	May, 1889	
678	do.	do.	Henry Lawlor,	Jan. 1857	Elibaeth Lawlor,	7 years,	20 00	do.	Nov. 1891	
679	do.	do.	Andrew Garrison,	Apr. 1835	Nicholas Murphy,	do.	20 00	do.	do.	
681	do.	do.	Ann Reed,	June, 1853	J. R. Woodburn,	do.	48 00	do.	May, 1886	
682	do.	do.	do.	do.	Francis Smith,	14 years,	40 00	do.	May, 1892	
685	do.	do.	James A. Whitney.	May, 1855	Emma J. Daley,	do.	28 00	do.	May, 1890	
728	do.	do.	George A. Lockhart.	June, 1851	Harriet S. Prichard,	7 years,	10 00	do.	May, 1885	
729	do.	do.	do.	do.	Joseph Prichard,	do.	10 00	do.	do.	
731	do.	do.	John Lough,	July, 1851	John White,	21 years,	50 00	do.	May, 1893	
732	do.	do.	do.	do.	do.	7 years,	10 00	do.	May, 1886	
733	do.	do.	Jacob Noyes,	Jan. 1854	Thomas O. Sandall,	21 years,	50 00	do.	May, 1898	
734	do.	do.	do.	do.	James McAnley,	do.	50 00	do.	May, 1896	

Rent Roll, City Corporation Lots, Eastern Side of the Harbour.—Continued.

No. of Lot.	Street.	Ward.	To whom originally leased.	Date.	Present Holders of Lease.	Term.	Rent.	Payable.	Expiry.	Remarks
735	Orange,	Queens,	Thos. and Mary Johnston,	Jan. 1854	Catherine R. Denniston,	10 years,	\$ 30 00	Half-yearly,	May, 1892	
736	do.	do.	do.	do.	Henry Pope,	7 years.	10 00	do.	do.	
737	do.	do.			Thomas Johnston,	do.	20 00	Yearly,	do.	
Block D. 5	do.	do.	Geo. O. Nowlin,			21 years,		do.		
6	do.	do.	do.			do.		do.		
7	do.	do.	do.			do.		do.		
Block F. 3	do.	do.								
4	do.	do.								
5, 6 and 7	Duke,	do.	Samuel Phillips,		Samuel Phillips,	7 years.	64 00	Yearly,		
744	do.	do.	do.		do.	do.				
Block F. 8	do.	do.								
750	do.	do.								
751	do.	do.								
753	do.	do.								
754	do.	do.								
755	do.	do.								
Water Lots. 33		Dukes,	Bradford Gilbert,	July, 1786	Cutous Department,	Perpetual,	1 00	Yearly,		
22 and 23		do.	George G. Gilbert,	Nov. 1825	do.	do.	20 00	do.		
24		do.	Jarvis and Miles,	Apr. 1808	do.	do.	1 00	do.		
In front 25		do.	Keith and McLeod.	Apr. 1857	George McLeod.	do.	20 00	do.		
In front 21 part 21 & 23		do.	do.	June, 1857	do.	do.	120 00	Half-yearly,		
Pettingell 1	Breastwork	do.			Charles E. Scammell,		200 00			
2		do.								
3		do.			Robert Wills,					
Part 4		do.			John Cotter,					
4		do.								
5		do.	Richard Bossall.		James J. Kaye.	Perpetual.	15 80			
Lot Prince William,		do.								
do. do.		do.			C. E. Harding,		200 00			
855	Duke,	do.	William Francis,	Sept. 1844	James Adams,	21 years,	50 00	Half-yearly,	May, 1899	
856	do.	do.	Chas. Whitney.	Sept. 1855	Mary Knox,	do.	48 00	do.	May, 1898	
861	do.	do.	Thomas Furnas,	Oct. 1883	Robert Magee,	do.	36 00	do.	May, 1904	
862	do.	do.								
865	do.	do.	George McLean,	Jan. 1854	Est. Geo. M. McLean,	7 years,	4 30	do.	Nov. 1887	
866	do.	do.	do.	do.	do.	do.	7 00	do.	do.	
868	do.	do.	do.	do.	do.	do.	7 00	do.	May, 1888	
869	do.	do.	do.	do.	do.	do.	7 00	do.	do.	

Continued.

Payable.	Expiry.	Remarks
Half-yearly,	May, 1892	
do.	do.	
Yearly,	do.	
do.		
do.		
do.		
Yearly,		
do.		
do.		
do.		
Yearly,		
do.		
do.		
do.		
Half-yearly,		
do.		
do.		
do.		
Half-yearly,	May, 1890	
do.	May, 1895	
do.	May, 1904	
do.	Nov. 1887	
do.	do.	
do.	May, 1888	
do.	do.	

No. 0

Block C

Block

Block

Rent Roll, City Corporation Lots, Eastern Side of the Harbour.—Continued.

No. of Lot.	Street.	Ward.	To whom originally leased.	Date.	Present Holders of Lease.	Term.	Rent.	Payable.	Expiry.	Remarks.
870	Duke,	Dukes,	William Haggerty,	Oct. 1856	Edward M. Dickie,	year to year.	\$ 1 00	Yearly,		
871	do.	do.	do.	do.	Geo. Jackson,	do.	1 00	do.		
872	do.	do.	do.	do.	do.	do.	1 00	do.		
Block G.										
4	do.	do.								
5	do.	do.								
9	Mecklenburg,	do.			Robert Staines,	21 years,	48 50		May, 1899	
10	do.	do.								
879	do.	do.	James Miller,	Oct. 1856	Janet Maxwell,	7 years.	10 00	Half-yearly,	May, 1891	
880	do.	do.	John Budge,	Nov. 1849	Geo. Rinehart,	21 years,	50 00	do.	May, 1898	
881	do.	do.	David Ennis,	do.	David Ennis,	do.	18 00	do.	Feb. 1871	
883	do.	do.	James Kerr,	do.	Wm. Rutledge,	do.	48 00	do.	May, 1898	
894	do.	do.	George Bragg,	Jun. 1837	Wm. Causey,	7 years,	20 00	do.	May, 1900	
924	do.	do.	Thomas Furnas,	Mar. 1853	John Byers,	do.	36 50	do.	May, 1888	
930	do.	do.	Henry McCollough,	Dec. 1853	Cornelius Sparrow,	do.	10 00	do.	May, 1878	
932	do.	do.	George McLellan,	June, 1857	St. John Building Society,		7 20	do.		
940	do.	do.	Wm. Henderson,	Dec. 1857	Thomas Reid,		6 00	do.		
941	do.	do.	do.	do.	James Carr,	do.	20 00	do.	May, 1885	
942	do.	do.	do.	do.	do.	do.	20 00	do.	do.	
Block H.										
4	do.	do.								
5	do.	do.								
9	Queen,	do.								
10	do.	do.								
947	do.	do.	Johnston Henderson,	Sept. 1857	Johnston Henderson,	do.	6 00	do.	May, 1885	
948	do.	do.	Nancy Henderson,	Dec. 1850	Trustees St. Phillips Ch.	do.	20	do.	May, 1878	
950	do.	do.	Benj. Harrington,	June, 1854	Jas. W. Harrington,	do.	5 00	do.	May, 1886	
1033	do.	do.	James Pettigell,	June, 1841	Wm. Causey,	do.	34 00	do.	May, 1890	
1036	do.	do.	Alexander Boyne,	Feb. 1854	Sarah H. Ferguson,	do.	36 00	do.	May, 1880	
1037	do.	do.	Carson Flood,	do.	George H. Nixon,	14 years,	42 00	do.	May, 1896	
1038	do.	do.	Geo. Suffren,		George Suffren,	7 years,	24 00	do.	May, 1887	
1044	do.	do.	John Wilson, Jr.,	Apr. 1883	John Wilson, Jr.	21 years,	8 00	do.	Apr. 1874	
1045	do.	do.	do.	do.	do.	do.	8 00	do.	do.	
1046	do.	do.	do.	do.	do.	do.	8 00	do.	do.	
1048	do.	do.	do.	do.	do.	do.	8 00	do.	do.	
1049	do.	do.	do.	do.	do.	do.	8 00	do.	do.	
			(Vacant Space),		do.	do.	5 50	do.		
Block I.										
1	do.	do.								
2	do.	do.								
3	do.	do.								

Rent Roll, City Corporation Lots, Eastern Side of the Harbour.—Continued.

No. of Lot.	Street.	Ward.	To whom originally leased.	Date.	Present Holders of Lease.	Term.	Rent.	Payable.	Expiry.	Remarks.
Block I.	4 Queen,	Dukes,								
Block J.	1 St. James,	do.			John Kahn, Jr.		14 00	Half-yearly,		
	2 do.	do.								
	3 do.	do.								
Water Lots,	1117 do.	Sidney,	James Keel,	Dec. 1814	J. Morris Robinson,	Perpetual,	1 00	Yearly,		
	1118 do.	do.	Oliver Burdett,	May, 1787	Magee,	do.	1 00	do.		
	1121 do.	do.	Christian Warner,	June, 1794	Est. Isaac Burpee,	do.	1 00	do.		
	1125 do.	do.	Stephen Humbert,	July, 1786		14 years,	0 0½	do.		
	1173 do.	do.	Robert A. Moore,	Mar. 1797	Henry Duffell,	do.	20 00	do.		
	1174 do.	do.			<i>Louisa a wife of P. Bennett</i>		26 -	do.		
	1223 Brittain,	do.	Thomas Green,	July, 1786	Trustees J. W. Cragg,	Perpetual.	1 00	do.		
	1234 do.	do.	John Kirk,	do.	Est. Richard Sains,	do.	1 00	do.		
	1235 do.	do.	Thomas Elms,	do.	do.	do.	1 00	do.		
Block K.	2 St. James,	do.								
	3 do.	do.								
	4 do.	do.								
	7 Brittain.	do.								
	8 do.	do.								
	9 do.	do.								
Block L.	4 do.	do.								
	5 do.	do.								
In front	1236 do.	do.	James Souvenia,	July, 1786	Francis Williams,	Perpetual.	1 00	Yearly,		
Part Opp.	1237 do.	do.	Lauchlan Donaldson,	May, 1821	S. G. Blizzard,	do.	1 00	do.		
"	1123 do.	do.	do.	do.	F. M. Hancock,	do.	1 00	do.		
Land opp.	1239 do.	do.	Thomas Sandall,	Apr. 1878	Est. John Moran,	do.	1 00	do.		
	1330 Main,	do.	Craven Calverley,	May, 1800	C. Langstroth,	do.	1 00	do.		
	1331 do.	do.	do.	do.	do.	do.	1 00	do.		
	1365 do.	do.	Gregory Vanhorne,	July, 1841	Arthur W. Masters,	21 years,	12 00	do.	May, 1892	
	1366 do.	do.	do.	do.	do.	do.	12 00	do.	do.	
	1367 do.	do.								
	1368 do.	do.								
	1369 do.	do.								
	1370 do.	do.								
Block L.	7 do.	do.								
	8 do.	do.								
	9 do.	do.								
	10 do.	do.								
	1411 do.	do.	John Clark,	Aug. 1815	James Robertson,	21 years,	1 00	do.		

IF.—Continued.

t.	Payable.	Expiry.	Remarks
00	Half-yearly,		
00	Yearly,		
00	do.		
00	do.		
01	do.		
00	do.		
00	do.		
00	do.		
00	do.		
00	do.		
00	Yearly,		
00	do.		
00	do.		
00	do.		
00	do.		
00	do.		
00	do.		
00	do.	May, 1892	
00	do.	do.	
00	do.		

No.

Block

Block

Plate
of ic

In f

Water

Blu

Blu

Rent Roll, City Corporation Lots, Eastern Side of the Harbour.—Continued.

No. of Lot.	Street.	Ward.	To whom originally leased.	Date.	Present Holders of Lease.	Term.	Rent.	Payable.	Expiry.	Remarks
1412	Main,	Sidney,	Benedict Arnold,	Aug. 1786	James Robertson,	21 years,	1 00	Yearly,		
1413	do.	do.	Richard Bonsall,	Sept. 1786	Est. John Fisher,	do.	1 00	do.		
Block M.	1 do.	do.								
	2 do.	do.								
	3 do.	do.								
	4 do.	do.								
	5 Sheffield,	do.								
	6 do.	do.								
1434	do.	do.								
Block N.	2 do.	do.								
Plats in front of lot B, 1240	do.	do.	John McAvity,	Mar. 1858	Henry Duffell, Jr.,	21 years,	20 00			
In front 1240	do.	do.	Thomas McAvity,	Jan. 1848	do.	do.	20 00			
	Germain Street Slip,	do.	A. C. O. Trentowsky,	Jan. 1857	W. H. Quinn,	Pleasure,	100 00			
Water Lots, Block A.	1 Charlotte,	do.	John McAvity,	Mar. 1858	Henry Duffell, Jr.,	12 years,	14 00	III-Yearly,		
	2 do.	do.	John Sandall,	do.	do.	do.	14 00	do.		
Block B.	1 do.	do.	A. C. O. Trentowsky,	Feb. 1840	W. H. Quinn,	14 years,	20 20	do.	May, 1884	
	2 do.	do.	do.	do.	do.	do.	20 20	do.	do.	
	3 do.	do.	John Sandall,	do.	do.	do.	17 00	do.	do.	
	4 do.	do.	do.	do.	do.	do.	17 00	do.	do.	





RENT ROLL

Of City Corporation Lots in the Parish of Lancaster.

Block.	Lot.	To whom originally leased.	Date.	Present Holders of Lease.	Term.	Rent.	Payable.	Expiry.	Remarks
1		SOLD TO	PROVINCIAL GOVERNMENT		FOR	LUNATIC ASYLUM.			
2		do.	do.	do.	do.	do.	do.		
3		Noah Pangburn,	Dec. 1786	A. Cushing & Co.,	Perpetual.	14 50	Yearly.		
	1	John Southier,	Mar. 1846	Robert Fair,	7 years,	20 00	Hf-Yearly.		
	2	Robert McGowan,	Nov. 1849	Michael & Hannah Cullinan	do.	21 00	do.		
	3		May, 1855	R. & H. Gillingham,	do.	24 00	do.		
	4	Alexander Hood,	Jan. 1852	James Ready,	do.	21 00	do.		
	5	Robert Nugent,	Mar. 1855	do.	do.	24 00	do.		
	6	Andre Cushing.	May, 1855	John Warren,	do.	21 00	do.		
	7	A. C. O. Trentowsky,	Oct. 1854	James Ready,	do.	27 00	do.		
A	8	Andre Cushing,	do.	do.	do.	40 00	do.		
	9 part	James D. Lewin.	Apr. 1855	do.	do.	10 00	do.		
	Parts 11 & 12			James Griffith,	do.	1 90	Yearly.		Pasture.
	20	James Griffith,		do.	do.	10 00	Hf-Yearly.		
	21	Richard Harricks,		Richard Harricks,	do.	10 25	do.		
	22	Mary Mills,		Mary Mills,	do.	10 50	do.		
	23	James Tibbets,		Dominion Ry. Department,	do.	12 50	do.		
	1	C. Hagerty,		C. Hagerty,	do.	11 30	do.		
	2	J. Hagerty,		Jeremiah Hagerty,	21 years,	12 25	do.		
	3-17	Terence O'Brien,		Terence O'Brien,	7 years,	1 00	do.		
	18	do.		do.	do.	4 00	do.		
B	19	do.		do.	do.	4 00	do.		
	20			James McSorley,	do.	4 00	do.		
	21			R. C. Bishop, St. John,	do.	20	Yearly.		
	22	B. B. Smith,		Bernard B. Smith.	do.	11 00	Hf-Yearly.		
		Michael Sullivan,		Michael Sullivan,	do.	20 00	do.		Building Lot.
		do.				40 00	do.		Pasture.
		do.				8 00	do.		do.
	1 a	Richard Taylor,		Mrs. Margaret Foley,	7 years.	24 00	do.		
	1 b	do.		John Gillingham,	do.	30 00	do.		
	1 c	do.		James Ready,	21 years,	26 00	do.		
D	1 d	do.		do.	do.	15 50	do.		
	2	Michael J. Collins,		Michael J. Collins,	do.	40 00	do.		
	3			James Donovan,	7 years,	18 00	do.		

Rent Roll, City Corporation Lots, in the Parish of Lancaster.—Continued.

Block.	Lot.	To whom originally leased.	Date.	Present Holders of Lease.	Term.	Rent.	Payable.	Expiry.	Remarks
D	4			Thomas Stewart.	7 years,	24 00	Hf-Yearly.		
	5			Sons of Temperance,	21 years,	20	Yearly.		
	Part 6			Joseph Armstrong,	7 years,	20 00	Hf-Yearly.		
	Part 6			Mason Sheffield,	do.	10 00	do.		
	7			School Trustees,	40 years,	20	Yearly.	1903.	
	8			David Young,	21 years,	10 50	do.		
	9	James R. Ruel,		Wm. A. Warwick,	do.	12 50	Hf Yearly.		
	10	do.		Mary F. Nagle,	do.	13 00	do.		
	23	do.		James R. Ruel,	do.	10 50	do.		
	24	do.		do.	do.	10 50	do.		
E	25	Wm. McHarg.		Wm. McHarg,	do.	10 50	do.		
		Nugent & Hopkins,		B. Mooney & Sons,		52 00	do.		
		do.		do.		36 00	do.		Privilege of making brick
		do.		do.		10 00	do.		
		do.		do.		20 00	do.		
F		do.		Est. M. Dalton,		10 00	do.		
		do.		Est. John Holland,		8 00	Quarterly,		
		do.		Catherine Sexton,		8 00	do.		
		do.		Patrick		12 00	Monthly,		
	6	Part 1 Trustees Meth. Church,		Trustees Meth. Church,		20	Yearly.		
		1 T. R. Jones and Everett,		Arch. Cameron,	7 years,	30 00	Hf Yearly,		
		2 do. do.		do.	do.	64 00	do.		
		Part 3 E. & N. A. R. R. Co.,		David White,	do.	25 00	do.		
		6 James Hunter,		Miller & Woodman,	do.	50 10	do.		
		7 do.		do.	do.	40 25	do.		
	8 do.		do.	do.	40 10	do.			
	9 John Lee,		John Lee,	do.	6 00	do.			
	10 J. DeW. Spurr,		Miller & Woodman,	do.	24 25	do.			
	11 do.		do.	do.	18 25	do.			
	School Lot	Dennis Morris,		Estate of Dennis Morris,	21 years,	20 00	Yearly,	May, 1880	
7	1	Wm. Ellman,	Aug. 1850	E. C. Sutton & M. Barnhill,		52 00	Hf-Yearly,		
	Part 2			Lord Bishop of Fredericton,	Perpetual.	20	Yearly,		
	do.			Trustees of Baptist Church,	21 years,	20	Hf-Yearly,		
				Jeremiah Stout,		5 00	do.		
		George Barnhill,		Lord Bishop of Fredericton,		5 00	Yearly,		
				Geo. E. Barnhill,		15 00	Hf-Yearly,		
	3	Joseph Scammell,		do.		41 50	do.		

ed.

marks

making brick.

Ren

Block.

7

8

9

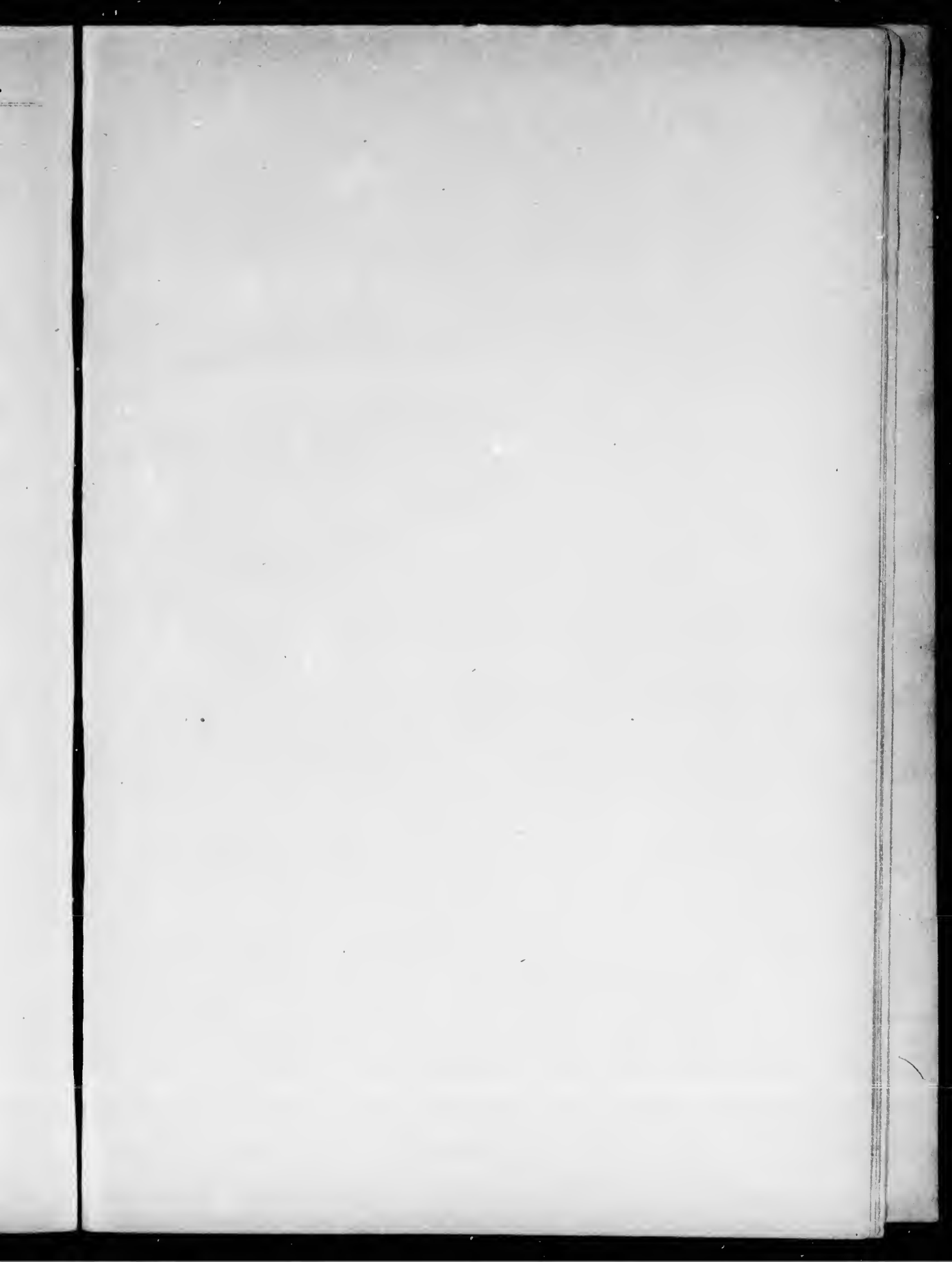
10

Rent Roll, City Corporation Lots, in the Parish of Lancaster.—Continued.

Block.	Lot.	To whom originally leased.	Date.	Present Holders of Lease.	Term.	Rent.	Payable.	Expiry.	Remarks.	
7	4 a	City.		Sweet and Fowler,		84 00			House.	
	4 b									
	4 c									
	d									
	e									
	f				Mrs. Long,		36 00			
	g				Patrick McCarron,		108 00	Quarterly,		
	a									
	b									
	c									
	d									
	e									
	f									
	g				Stout and McColgan,		10 00	Quarterly,		Pasture.
	8	a								
b										
c										
d										
e										
f										
g		Baker.			Robert H. Armstrong,	7 years,	26 00	Hf-Yearly.		
h		Baker.			do.	do.	34 00	do.		
i		E. C. Sutton.			E. C. Sutton & M. Barnhill,	do.	41 00	do.		
j		Ellis.			Wm. Barnhill,	do.	20 00	do.		
k		Part K Simon Lake.			T. B. McManus.		10 00	do.		
l		Part K & L			Daniel Murphy,		40 00	Quarterly,		
m		John Harding.			Alfred Lordly,		150 00	Hf-Yearly.		House.
n		1 & 2	do.		James Manchester,	999 years,	1 00	Yearly.		
o		3 & 4	do.		George Morrison,		16 00	Monthly.		Without House.
9	p	3, 6, 19, 20	May, 1886	James Mason,	14 years.	125 00	Hf-Yearly.		House.	
	q	7 & 18	do.	George Morrison, Jr.,		40 00	do.			
	r	8 & 17	do.	do.		160 00	do.		House.	
	s	15 lots	do.	do.		40 00	do.			
	t	9, 16	do.		Margaret Wood,	7 years,	65 00	Quarterly,		House.
	u	10	do.		John H. Butt,	14 years,	105 00	Hf-Yearly,		House.
	v	12	do.		George Moore,		90 00	do.		House.
	w	Part 32	do.	May, 1887	Henry Quig.	7 years,	20 00	Quarterly,		House.
	x	40-46	do.		do.		25 00	Hf-Yearly,		House.
	y	35	do.		Michael Quig.		20 00	Quarterly,		House.

Rent Roll, City Corporation Lots, in the Parish of Lancaster.—Continued.

Block.	Lot.	To whom originally leased.	Date.	Present Holders of Lease.	Term.	Rent.	Payable.	Expiry.	Remarks
9	30	John Harding,		Michael Quig,		4 00	Hf-Yearly.		
		do.		Henry Quig,		2 00	Yearly.		
	33 & 34	do.		Patrick Culbert,		12 00	Hf-Yearly,		
	10			T. B. McManus,		40 00	do.		
11		Geo. Bennison,	Oct. 1786	Est. Hugh Morris,	Perpetual,	12 27	do.		
12		William Hazen,		Dennis Morris,	do.	10 00	do.		
Green Head,	1	South Bay Boom Co.		John and Geo. Raynes,	20 years,	205 00	Hf-Yearly.	Nov. 1866	
	Part 2 & 3	Daniel Morris,		Wm. Hanson,	21 years,	150 00	Hf-Yearly,	Nov. 1892	House,
	Part 3			Trustees of Schools,		1 00	Yearly,		
	4 & 5	John Gault,		Baker and Randolph.	21 years,	250 00	Hf-Yearly,	May, 1897	
	6, 8, 10, 12	South Bay Boom Co.		Wm. Hanson,		30 00	do.		
	7	Owen Morris,	Sept. 1848	Baker and Randolph,	14 years	200 10	do.		
	9	William Shea,	Oct. 1819	do.					
	11	Joseph Armstrong.		Thomas E. Rooney,		40 00	do.		
	13 & 14	do.		Joseph and F. Armstrong,		100 00	do.		



No. of Lot.	Sta.
1	Bar.
2	do.
3	do.
4	Chan
5	do.
6	do.
7	do.
8	River
9 & 12	do.
10 & 13	River Bar.
11	River
14	Bar.

RENT ROLL

OF CITY CORPORATION LOTS ON NAVY ISLAND.

No. of Lot.	Street.	To whom originally leased.	Date.	Present Holders of Lease.	Term.	Rent.	Payable.	Expiry.	Remarks
1	Bar.	Andrew Lamereaux,		Andrew Lamereaux,		20 00	Quarterly.		
2	do.	Mary Ann Stanley,		Mary Ann Stanley,		20 00	do.		
3	do.								
4	Channel.								
5	do.	James Sinclair,							House.
6	do.	John Sillphant,		John Sillphant,		20 00	do.		
7	do.	Hiram Nice,		Hiram Nice,		15 00	do.		
8	River.								
9 & 12	do.	James Wilson,		James Wilson,		10 00	do.		
10 & 13	River. Bar.	Wm. Dunham,		Wm. Dunham,		10 00	do.		
11	River.	John M. Christopher,		J. M. Christopher, R. Hut- ton and E. C. Woodworth.		10 00	do.		
14	Bar.								

